

Data Path : Z:\pestpcbsrv\HPCHEM1\ECD\_0\Data\P0061220\  
 Data File : P0068938.D  
 Signal(s) : Signal #1: ECD1A.CH Signal #2: ECD2B.CH  
 Acq On : 12 Jun 2020 21:58  
 Operator : DD\AJ  
 Sample : I.BLK  
 Misc :  
 ALS Vial : 2 Sample Multiplier: 1

Instrument :  
 ECD\_0  
 ClientSampleId :  
 I.BLK

Integration File signal 1: autoint1.e  
 Integration File signal 2: autoint2.e  
 Quant Time: Jun 13 01:48:37 2020  
 Quant Method : Z:\pestpcbsrv\HPCHEM1\ECD\_0\methods\P0061220.M  
 Quant Title : GC EXTRACTABLES  
 QLast Update : Sat Jun 13 01:32:21 2020  
 Response via : Initial Calibration  
 Integrator: ChemStation 6890 Scale Mode: Small noise peaks clipped

Volume Inj. : 2 µl  
 Signal #1 Phase : ZB-MR1 Signal #2 Phase: ZB-MR2  
 Signal #1 Info : 30Mx0.32mmx 0.50µ Signal #2 Info : 30M x 0.32mm x 0.25µm

Compound	RT#1	RT#2	Resp#1	Resp#2	ng/ml	ng/ml
-----						
System Monitoring Compounds						
1) SA Tetrachlo...	4.409	3.567	588020	778322	21.551	21.908
2) SA Decachlor...	10.077	8.775	885301	1049598	19.715	20.511

Target Compounds

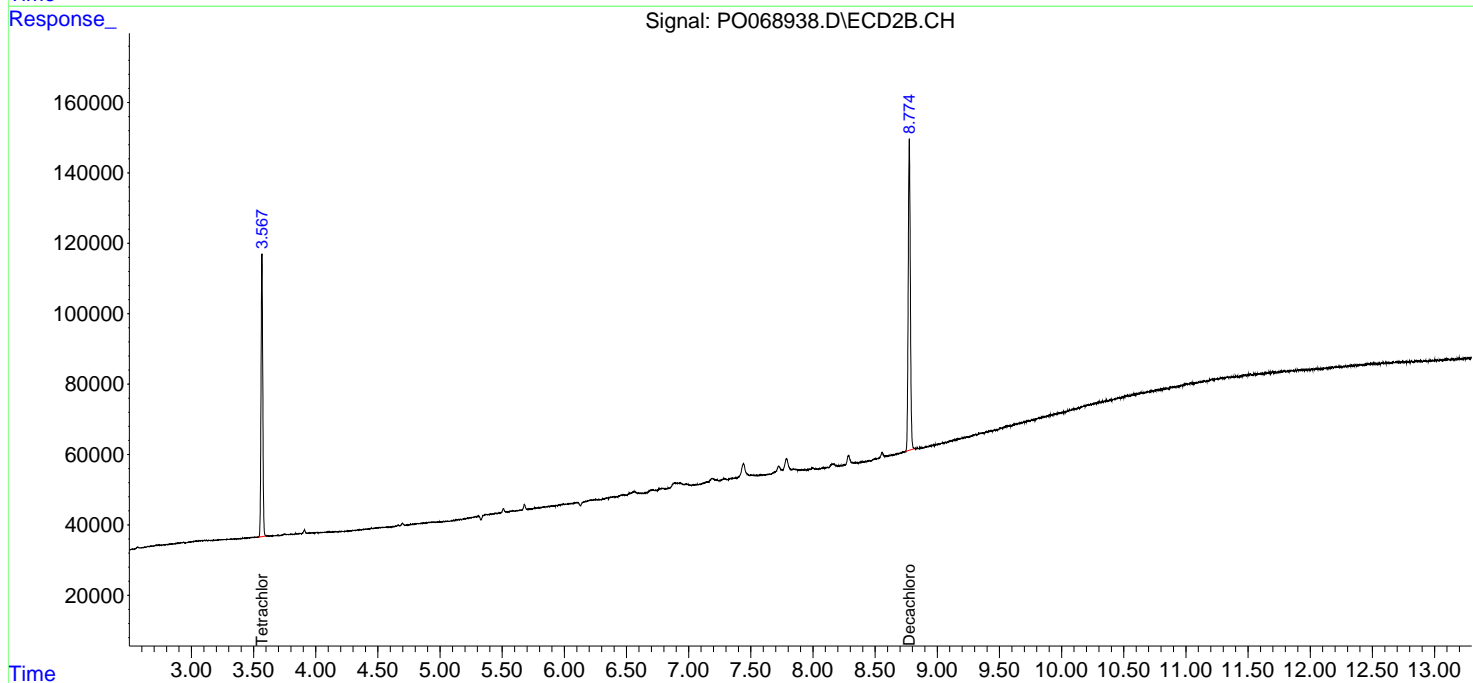
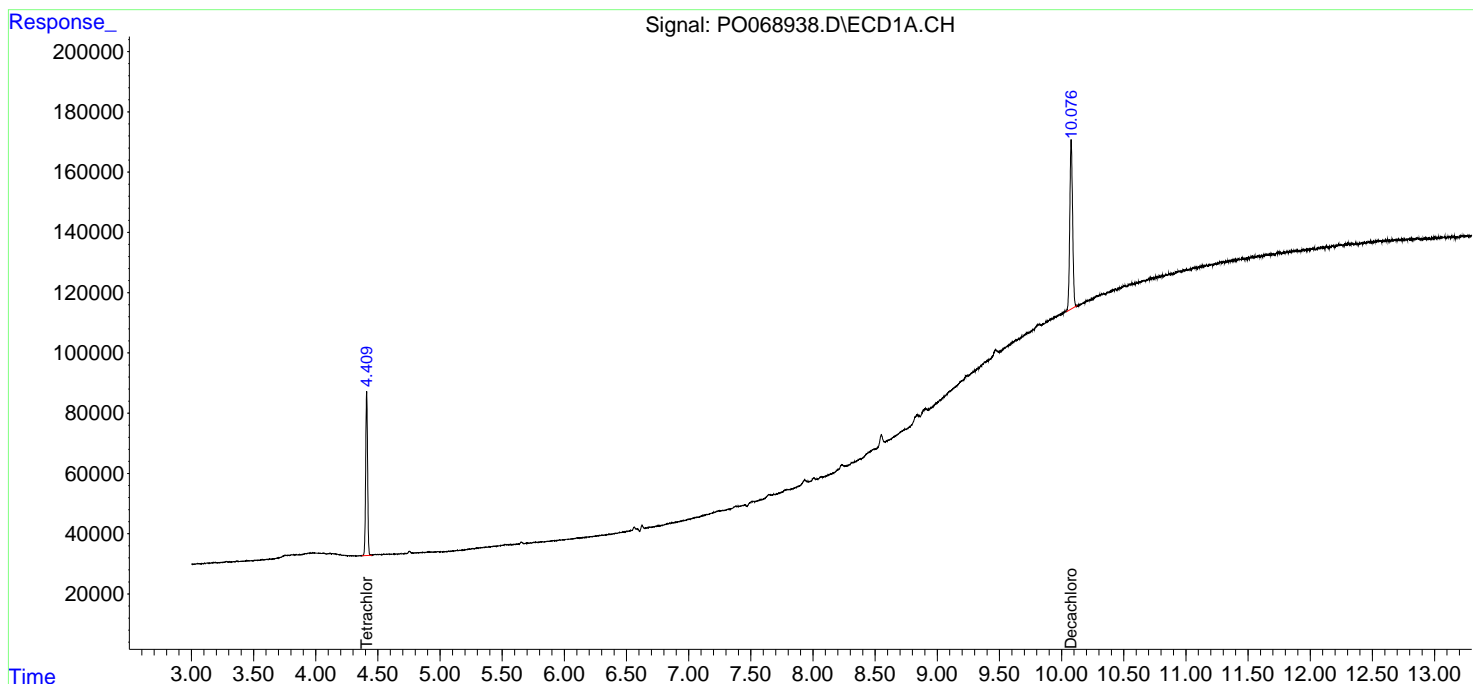
(f)=RT Delta > 1/2 Window (#)=Amounts differ by > 25% (m)=manual int.

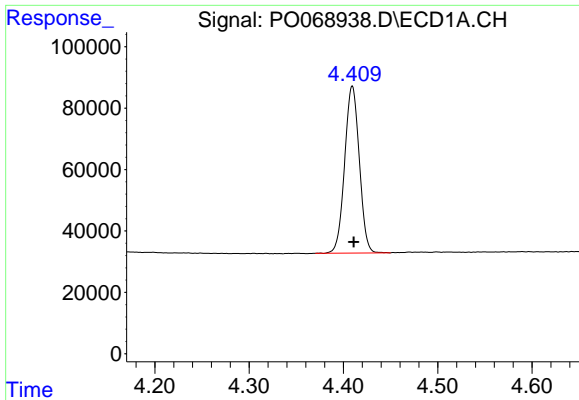
Data Path : Z:\pestpcbsrv\HPCHEM1\ECD\_0\Data\P0061220\  
 Data File : P0068938.D  
 Signal(s) : Signal #1: ECD1A.CH Signal #2: ECD2B.CH  
 Acq On : 12 Jun 2020 21:58  
 Operator : DD\AJ  
 Sample : I.BLK  
 Misc :  
 ALS Vial : 2 Sample Multiplier: 1

Instrument :  
 ECD\_O  
 ClientSampled :  
 I.BLK

Integration File signal 1: autoint1.e  
 Integration File signal 2: autoint2.e  
 Quant Time: Jun 13 01:48:37 2020  
 Quant Method : Z:\pestpcbsrv\HPCHEM1\ECD\_0\methods\P0061220.M  
 Quant Title : GC EXTRACTABLES  
 QLast Update : Sat Jun 13 01:32:21 2020  
 Response via : Initial Calibration  
 Integrator: ChemStation 6890 Scale Mode: Small noise peaks clipped

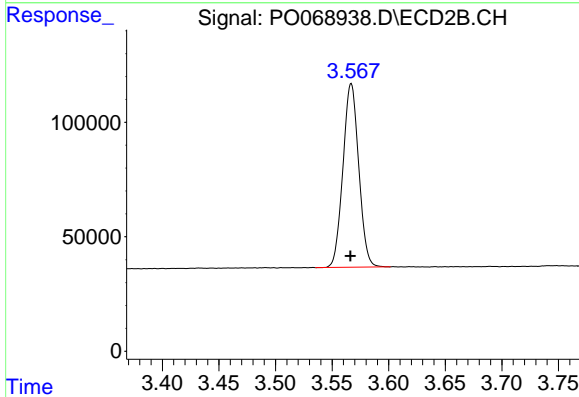
Volume Inj. : 2 µl  
 Signal #1 Phase : ZB-MR1 Signal #2 Phase: ZB-MR2  
 Signal #1 Info : 30Mx0.32mmx 0.50µ Signal #2 Info : 30M x 0.32mm x 0.25µm



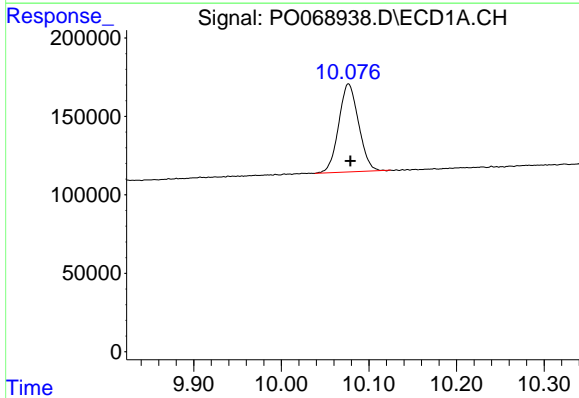


#1 Tetrachloro-m-xylene  
 R.T.: 4.409 min  
 Delta R.T.: -0.002 min  
 Response: 588020  
 Conc: 21.55 ng/ml

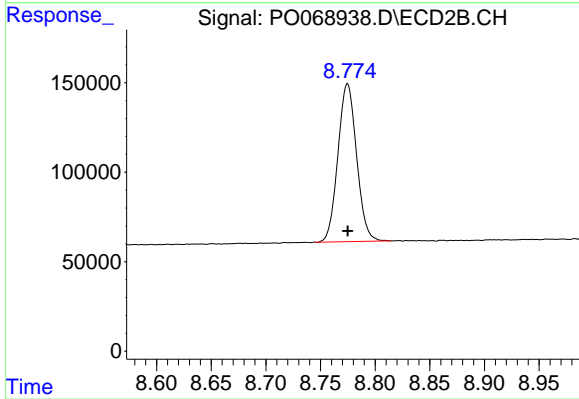
Instrument :  
 ECD\_O  
 ClientSampleId :  
 I.BLK



#1 Tetrachloro-m-xylene  
 R.T.: 3.567 min  
 Delta R.T.: 0.000 min  
 Response: 778322  
 Conc: 21.91 ng/ml



#2 Decachlorobiphenyl  
 R.T.: 10.077 min  
 Delta R.T.: -0.002 min  
 Response: 885301  
 Conc: 19.71 ng/ml



#2 Decachlorobiphenyl  
 R.T.: 8.775 min  
 Delta R.T.: 0.000 min  
 Response: 1049598  
 Conc: 20.51 ng/ml