

Data Path : Z:\pestpcbsrv\HPCHEM1\ECD_0\Data\P0061223\
 Data File : P0095594.D
 Signal(s) : Signal #1: ECD1A.ch Signal #2: ECD2B.ch
 Acq On : 12 Jun 2023 10:03
 Operator : YP/AJ
 Sample : AR1248ICV500
 Misc :
 ALS Vial : 33 Sample Multiplier: 1

Instrument :
 ECD_0
ClientSampleId :
 ICVPO061223

Integration File signal 1: autoint1.e
 Integration File signal 2: autoint2.e
 Quant Time: Jun 12 22:18:08 2023
 Quant Method : Z:\pestpcbsrv\HPCHEM1\ECD_0\methods\P0060923.M
 Quant Title : GC EXTRACTABLES
 QLast Update : Sat Jun 10 06:51:01 2023
 Response via : Initial Calibration
 Integrator: ChemStation

Volume Inj. : 2 µl
 Signal #1 Phase : ZB-MR1 Signal #2 Phase: ZB-MR2
 Signal #1 Info : 30Mx0.32mmx 0.50µ Signal #2 Info : 30M x 0.32mm x 0.25µm

Compound	RT#1	RT#2	Resp#1	Resp#2	ng/ml	ng/ml

System Monitoring Compounds						
1) SA Tetrachlo...	4.405	3.623	196.5E6	83903766	45.833	46.154
2) SA Decachlor...	10.239	8.678	126.7E6	59226144	50.842	53.179
Target Compounds						
21) L5 AR-1248-1	5.587	4.717	34656449	14191784	514.258	552.303
22) L5 AR-1248-2	5.863	4.956	53775878	23091718	496.792	527.189
23) L5 AR-1248-3	6.069	4.998	56128149	23887238	507.727	529.262
24) L5 AR-1248-4	6.477	5.171	55713250	26888426	507.138	529.628
25) L5 AR-1248-5	6.515	5.566	56016695	21116350	498.254	548.331

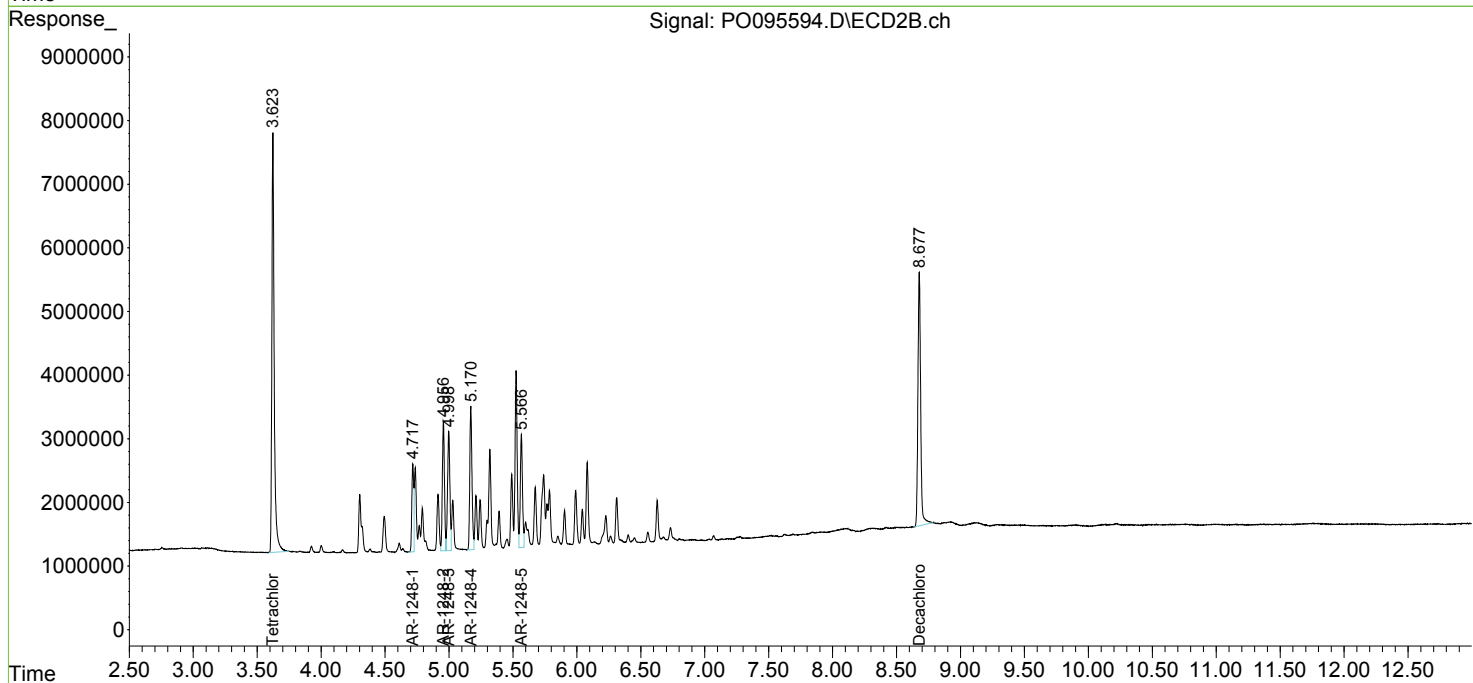
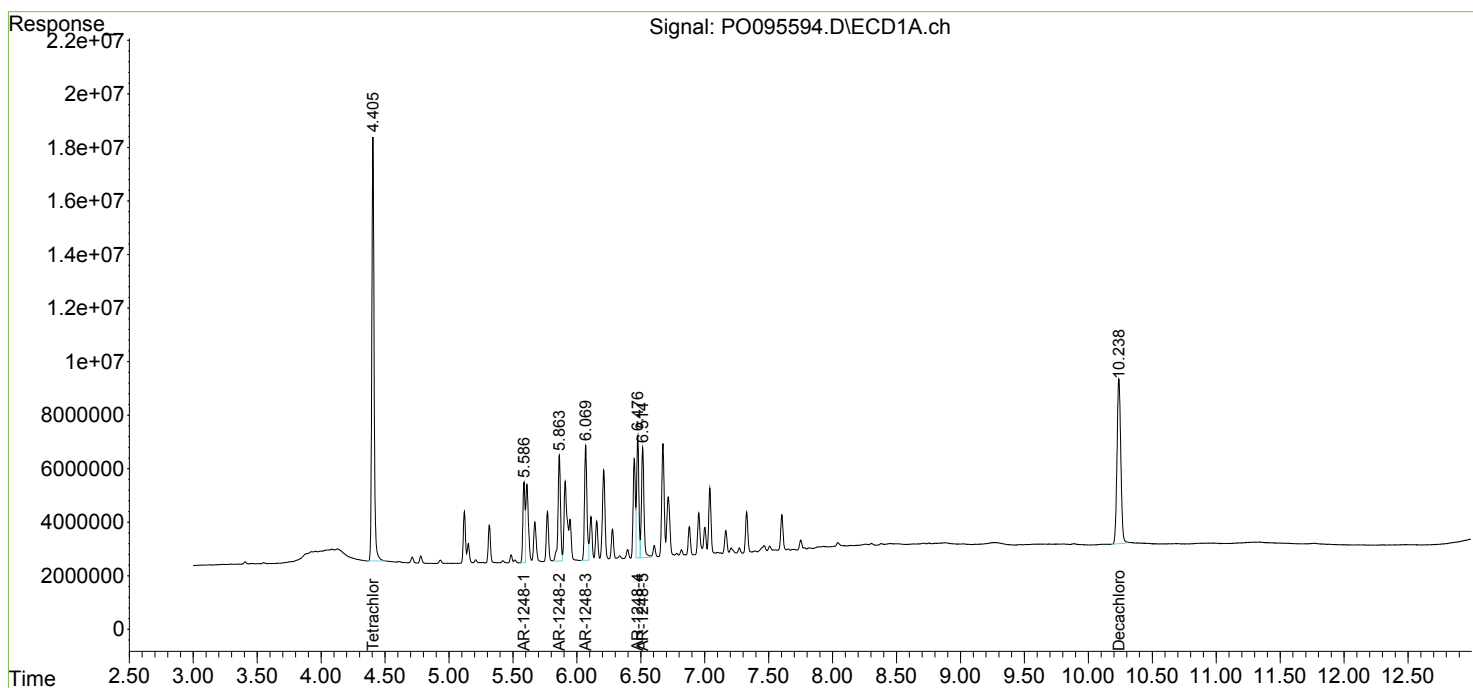
(f)=RT Delta > 1/2 Window (#)=Amounts differ by > 25% (m)=manual int.

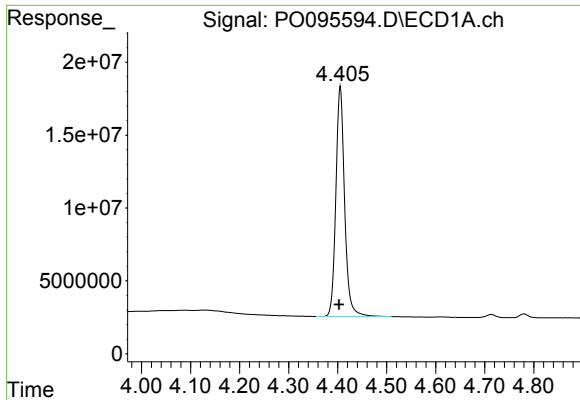
Data Path : Z:\pestpcbsrv\HPCHEM1\ECD_O\Data\P0061223\
 Data File : P0095594.D
 Signal(s) : Signal #1: ECD1A.ch Signal #2: ECD2B.ch
 Acq On : 12 Jun 2023 10:03
 Operator : YP/AJ
 Sample : AR1248ICV500
 Misc :
 ALS Vial : 33 Sample Multiplier: 1

Instrument :
 ECD_O
 ClientSampleId :
 ICVPO061223

Integration File signal 1: autoint1.e
 Integration File signal 2: autoint2.e
 Quant Time: Jun 12 22:18:08 2023
 Quant Method : Z:\pestpcbsrv\HPCHEM1\ECD_O\methods\P0060923.M
 Quant Title : GC EXTRACTABLES
 QLast Update : Sat Jun 10 06:51:01 2023
 Response via : Initial Calibration
 Integrator: ChemStation

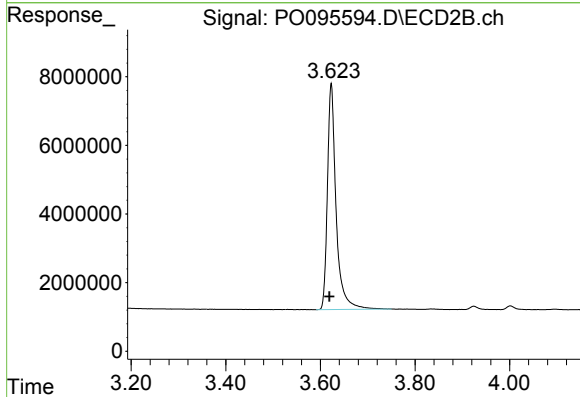
Volume Inj. : 2 µl
 Signal #1 Phase : ZB-MR1 Signal #2 Phase: ZB-MR2
 Signal #1 Info : 30Mx0.32mmx 0.50µ Signal #2 Info : 30M x 0.32mm x 0.25µm



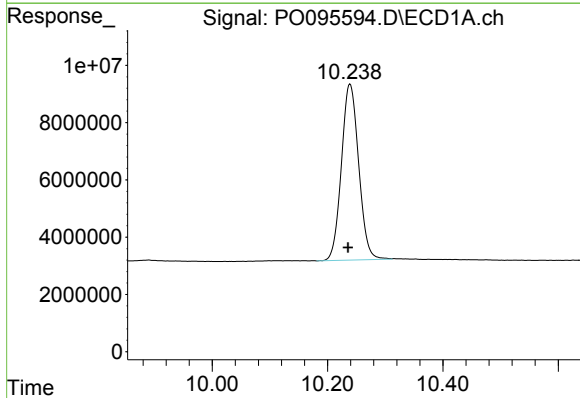


#1 Tetrachloro-m-xylene
 R.T.: 4.405 min
 Delta R.T.: 0.002 min
 Response: 196450495
 Conc: 45.83 ng/ml

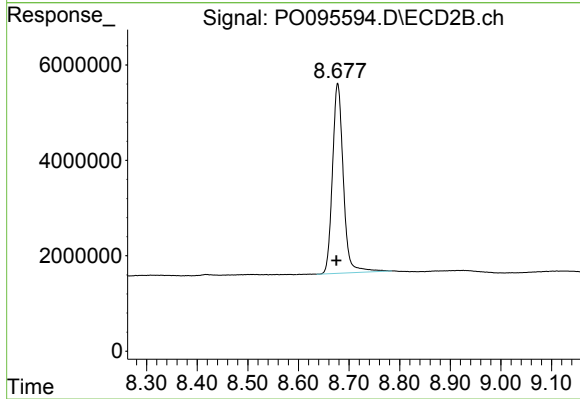
Instrument :
 ECD_O
 ClientSampleId :
 ICVPO061223



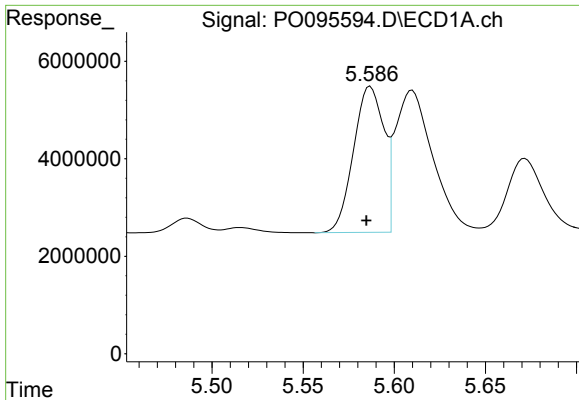
#1 Tetrachloro-m-xylene
 R.T.: 3.623 min
 Delta R.T.: 0.004 min
 Response: 83903766
 Conc: 46.15 ng/ml



#2 Decachlorobiphenyl
 R.T.: 10.239 min
 Delta R.T.: 0.003 min
 Response: 126712631
 Conc: 50.84 ng/ml



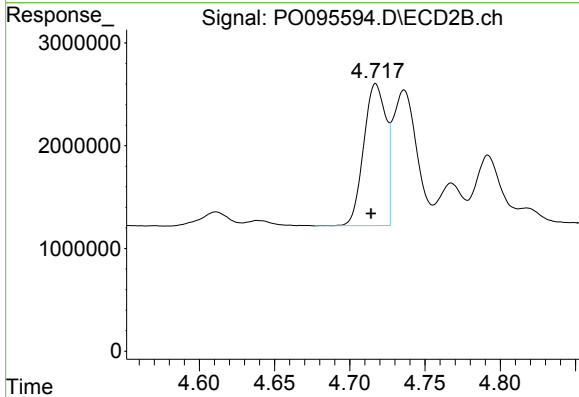
#2 Decachlorobiphenyl
 R.T.: 8.678 min
 Delta R.T.: 0.002 min
 Response: 59226144
 Conc: 53.18 ng/ml



#21 AR-1248-1

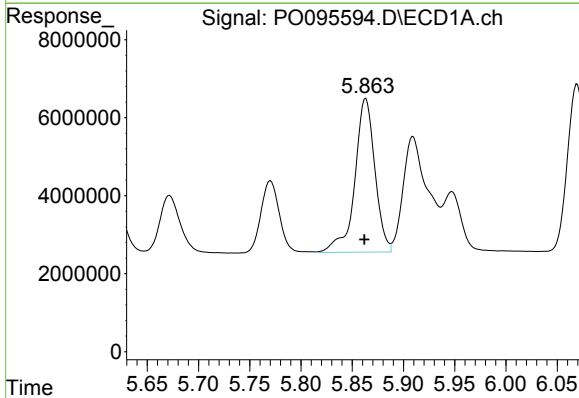
R.T.: 5.587 min
 Delta R.T.: 0.002 min
 Response: 34656449
 Conc: 514.26 ng/ml

Instrument :
 ECD_O
 ClientSampleId :
 ICVPO061223



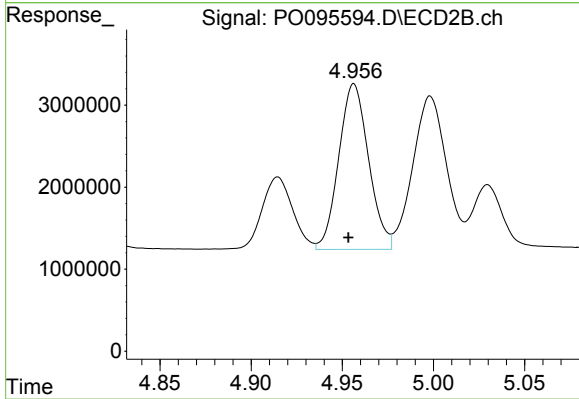
#21 AR-1248-1

R.T.: 4.717 min
 Delta R.T.: 0.003 min
 Response: 14191784
 Conc: 552.30 ng/ml



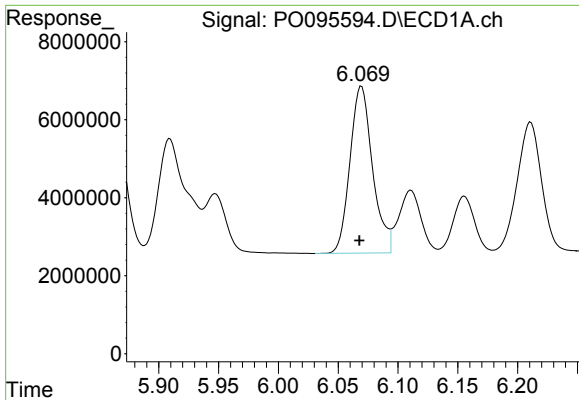
#22 AR-1248-2

R.T.: 5.863 min
 Delta R.T.: 0.001 min
 Response: 53775878
 Conc: 496.79 ng/ml



#22 AR-1248-2

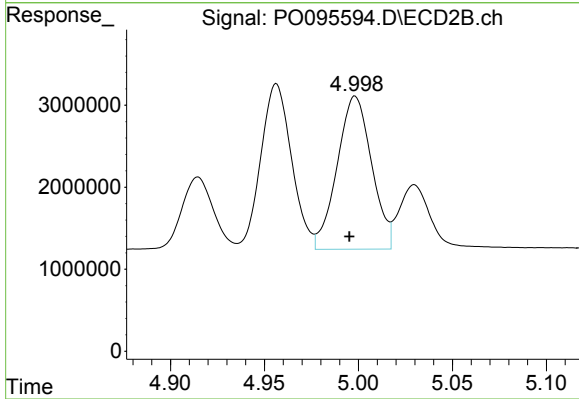
R.T.: 4.956 min
 Delta R.T.: 0.003 min
 Response: 23091718
 Conc: 527.19 ng/ml



#23 AR-1248-3

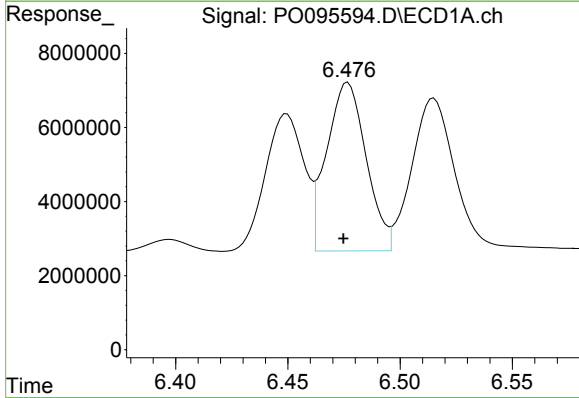
R.T.: 6.069 min
 Delta R.T.: 0.002 min
 Response: 56128149
 Conc: 507.73 ng/ml

Instrument :
 ECD_O
 ClientSampleId :
 ICVPO061223



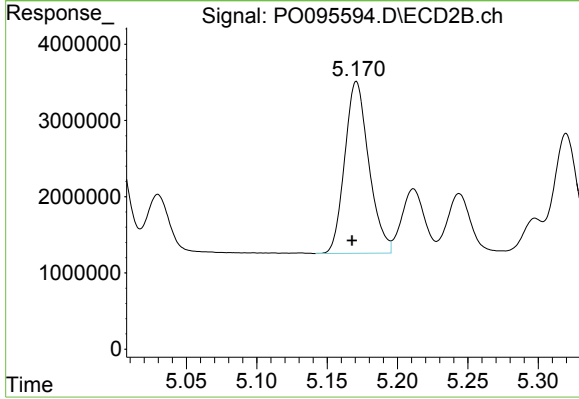
#23 AR-1248-3

R.T.: 4.998 min
 Delta R.T.: 0.003 min
 Response: 23887238
 Conc: 529.26 ng/ml



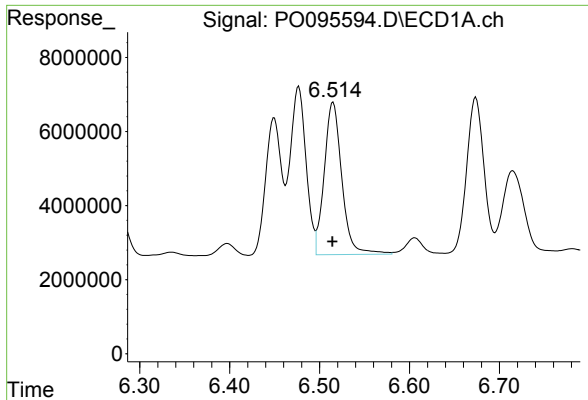
#24 AR-1248-4

R.T.: 6.477 min
 Delta R.T.: 0.002 min
 Response: 55713250
 Conc: 507.14 ng/ml



#24 AR-1248-4

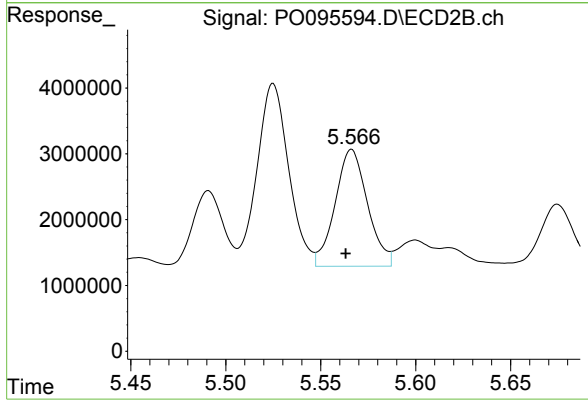
R.T.: 5.171 min
 Delta R.T.: 0.003 min
 Response: 26888426
 Conc: 529.63 ng/ml



#25 AR-1248-5

R.T.: 6.515 min
Delta R.T.: 0.000 min
Response: 56016695
Conc: 498.25 ng/ml

Instrument :
ECD_O
ClientSampleId :
ICVPO061223



#25 AR-1248-5

R.T.: 5.566 min
Delta R.T.: 0.003 min
Response: 21116350
Conc: 548.33 ng/ml