

Data Path : Z:\pestpcbsrv\HPCHEM1\ECD_0\Data\P0061223\
 Data File : P0095597.D
 Signal(s) : Signal #1: ECD1A.ch Signal #2: ECD2B.ch
 Acq On : 12 Jun 2023 10:54
 Operator : YP/AJ
 Sample : AR1248CCC500
 Misc :
 ALS Vial : 5 Sample Multiplier: 1

Instrument :
 ECD_0
 ClientSampleId :
 AR1248CCC500

Integration File signal 1: autoint1.e
 Integration File signal 2: autoint2.e
 Quant Time: Jun 12 22:22:01 2023
 Quant Method : Z:\pestpcbsrv\HPCHEM1\ECD_0\methods\P0060923.M
 Quant Title : GC EXTRACTABLES
 QLast Update : Sat Jun 10 06:51:01 2023
 Response via : Initial Calibration
 Integrator: ChemStation

Volume Inj. : 2 µl
 Signal #1 Phase : ZB-MR1 Signal #2 Phase: ZB-MR2
 Signal #1 Info : 30Mx0.32mmx 0.50µ Signal #2 Info : 30M x 0.32mm x 0.25µm

Compound	RT#1	RT#2	Resp#1	Resp#2	ng/ml	ng/ml

System Monitoring Compounds						
1) SA Tetrachlo...	4.406	3.624	191.8E6	81150047	44.759	44.639
2) SA Decachlor...	10.241	8.679	124.6E6	57495236	50.014	51.625
Target Compounds						
21) L5 AR-1248-1	5.587	4.718	33404243	13566102	495.677	527.954
22) L5 AR-1248-2	5.864	4.957	52954611	22508377	489.205	513.872
23) L5 AR-1248-3	6.070	4.998	55094088	23208982	498.373	514.234
24) L5 AR-1248-4	6.478	5.171	54114760	26232472	492.588	516.707
25) L5 AR-1248-5	6.516	5.567	54675443	20547546	486.324	533.561

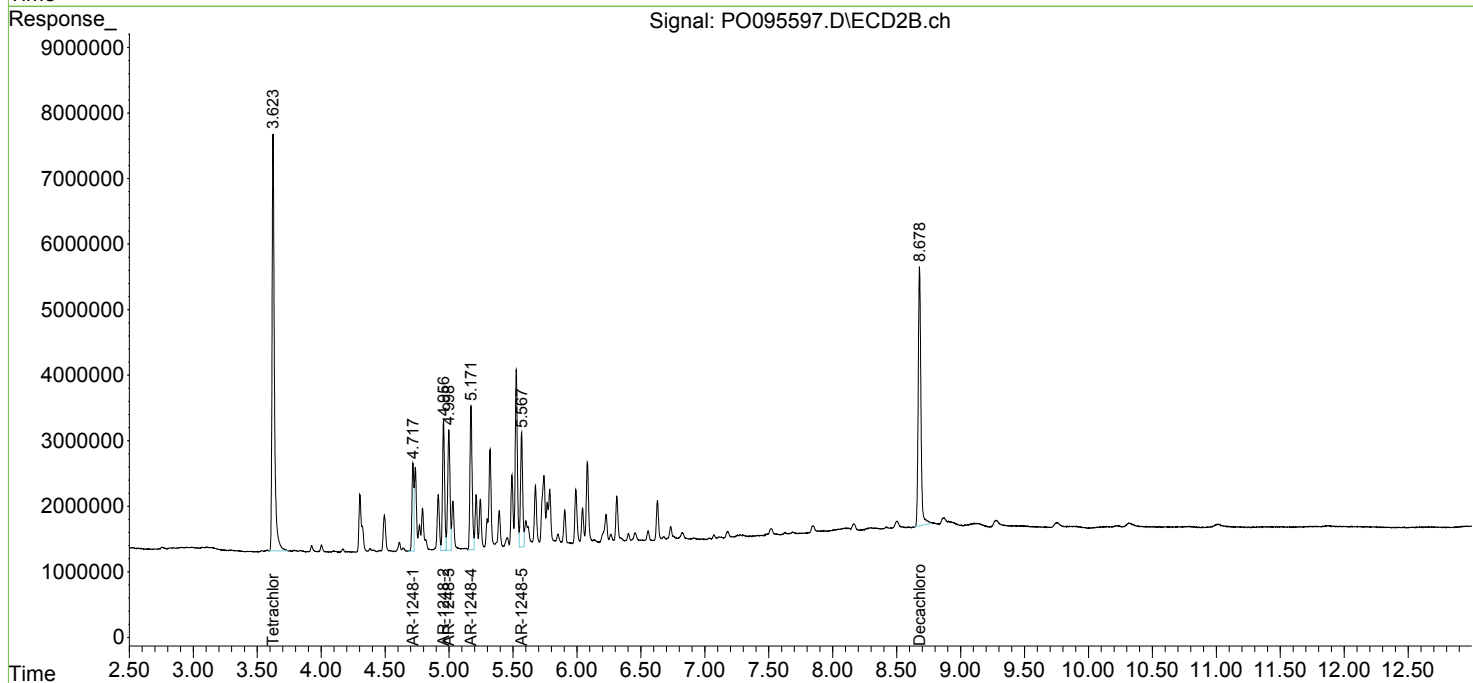
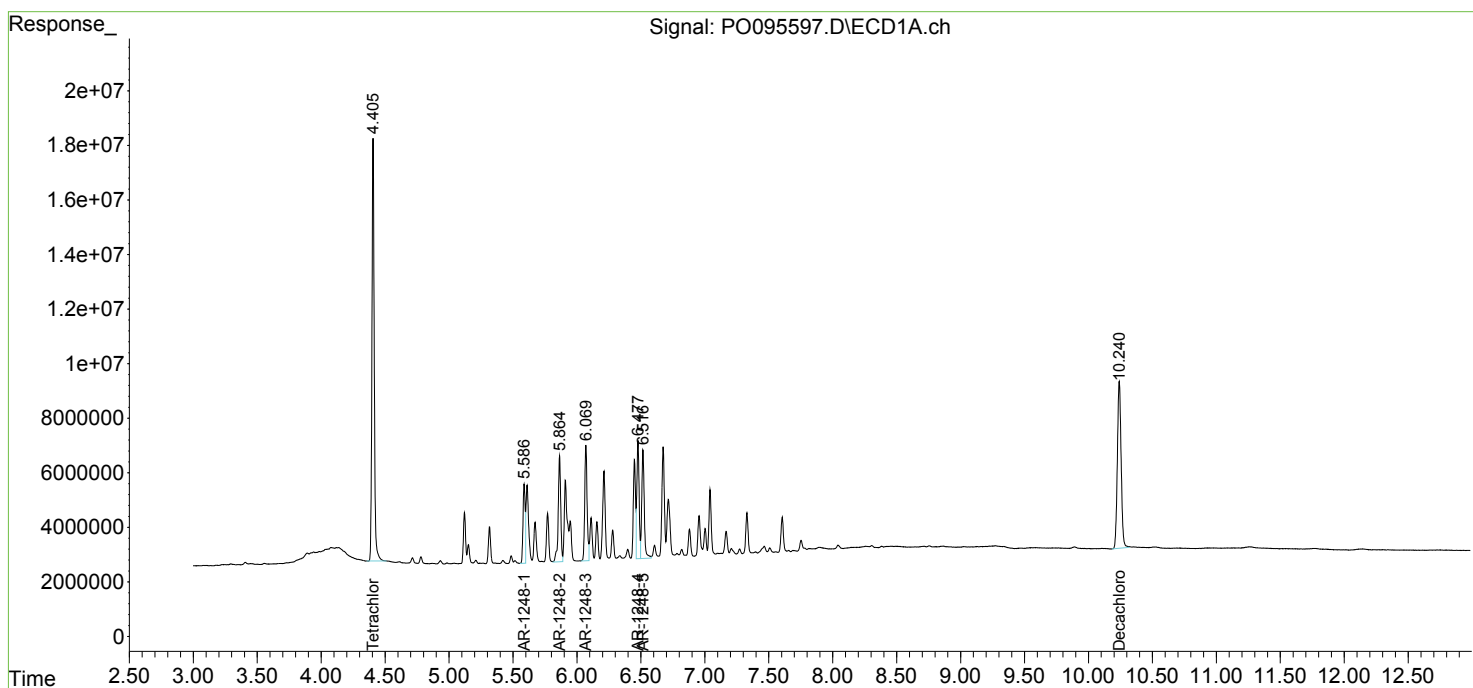
(f)=RT Delta > 1/2 Window (#)=Amounts differ by > 25% (m)=manual int.

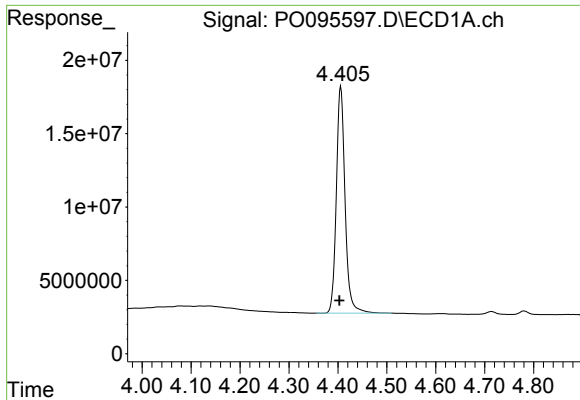
Data Path : Z:\pestpcbsrv\HPCHEM1\ECD_O\Data\P0061223\
 Data File : P0095597.D
 Signal(s) : Signal #1: ECD1A.ch Signal #2: ECD2B.ch
 Acq On : 12 Jun 2023 10:54
 Operator : YP/AJ
 Sample : AR1248CCC500
 Misc :
 ALS Vial : 5 Sample Multiplier: 1

Instrument :
 ECD_O
 ClientSampleId :
 AR1248CCC500

Integration File signal 1: autoint1.e
 Integration File signal 2: autoint2.e
 Quant Time: Jun 12 22:22:01 2023
 Quant Method : Z:\pestpcbsrv\HPCHEM1\ECD_O\methods\P0060923.M
 Quant Title : GC EXTRACTABLES
 QLast Update : Sat Jun 10 06:51:01 2023
 Response via : Initial Calibration
 Integrator: ChemStation

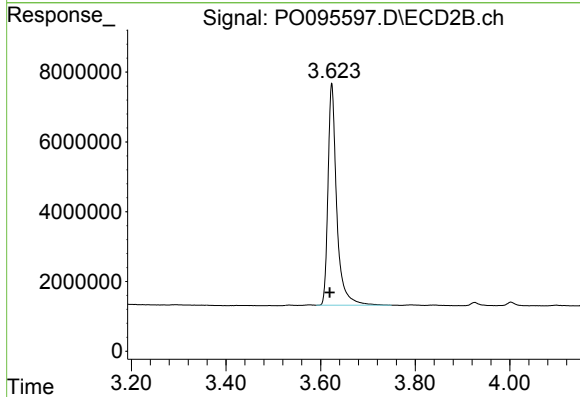
Volume Inj. : 2 µl
 Signal #1 Phase : ZB-MR1 Signal #2 Phase: ZB-MR2
 Signal #1 Info : 30Mx0.32mmx 0.50µ Signal #2 Info : 30M x 0.32mm x 0.25µm



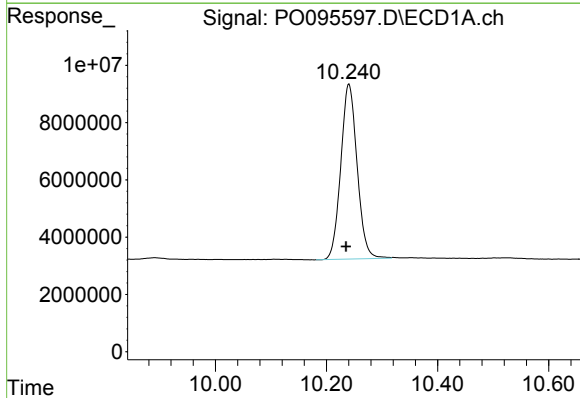


#1 Tetrachloro-m-xylene
 R.T.: 4.406 min
 Delta R.T.: 0.003 min
 Response: 191845496
 Conc: 44.76 ng/ml

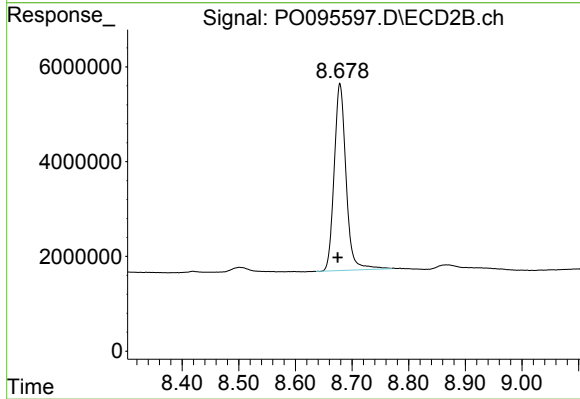
Instrument :
 ECD_O
 ClientSampleId :
 AR1248CCC500



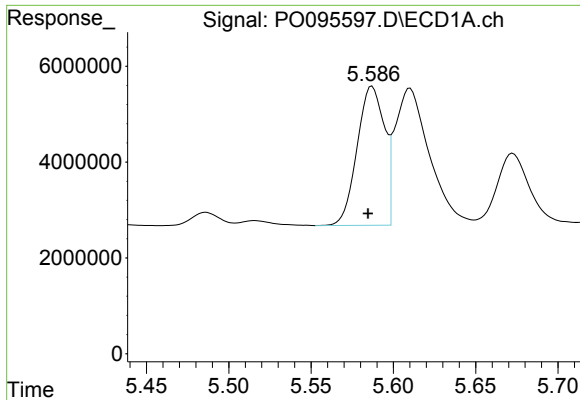
#1 Tetrachloro-m-xylene
 R.T.: 3.624 min
 Delta R.T.: 0.004 min
 Response: 81150047
 Conc: 44.64 ng/ml



#2 Decachlorobiphenyl
 R.T.: 10.241 min
 Delta R.T.: 0.005 min
 Response: 124647588
 Conc: 50.01 ng/ml



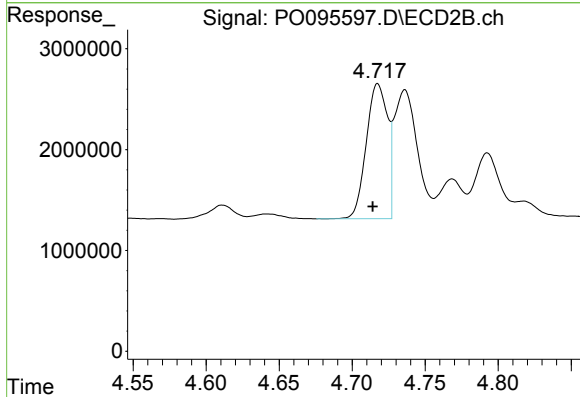
#2 Decachlorobiphenyl
 R.T.: 8.679 min
 Delta R.T.: 0.004 min
 Response: 57495236
 Conc: 51.63 ng/ml



#21 AR-1248-1

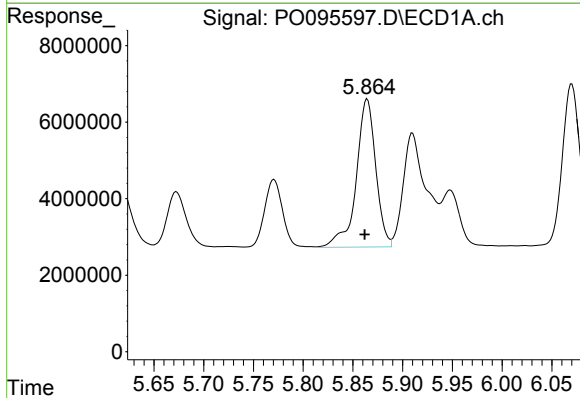
R.T.: 5.587 min
 Delta R.T.: 0.002 min
 Response: 33404243
 Conc: 495.68 ng/ml

Instrument :
 ECD_O
 ClientSampleId :
 AR1248CCC500



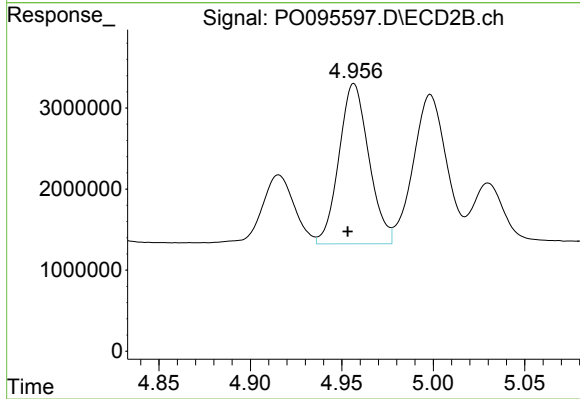
#21 AR-1248-1

R.T.: 4.718 min
 Delta R.T.: 0.003 min
 Response: 13566102
 Conc: 527.95 ng/ml



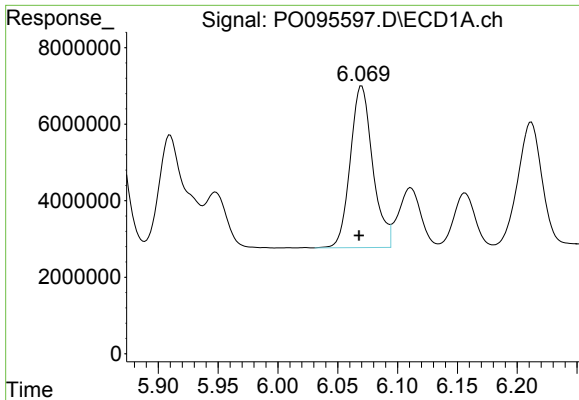
#22 AR-1248-2

R.T.: 5.864 min
 Delta R.T.: 0.002 min
 Response: 52954611
 Conc: 489.20 ng/ml



#22 AR-1248-2

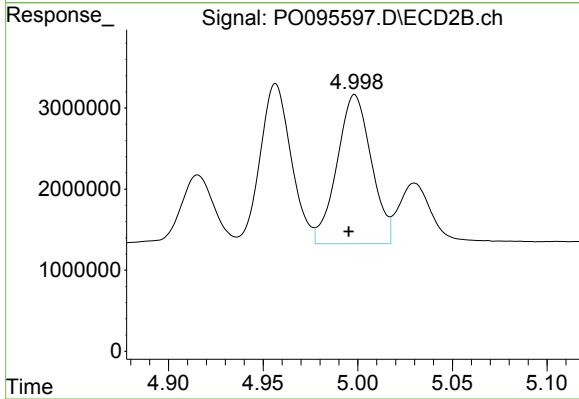
R.T.: 4.957 min
 Delta R.T.: 0.003 min
 Response: 22508377
 Conc: 513.87 ng/ml



#23 AR-1248-3

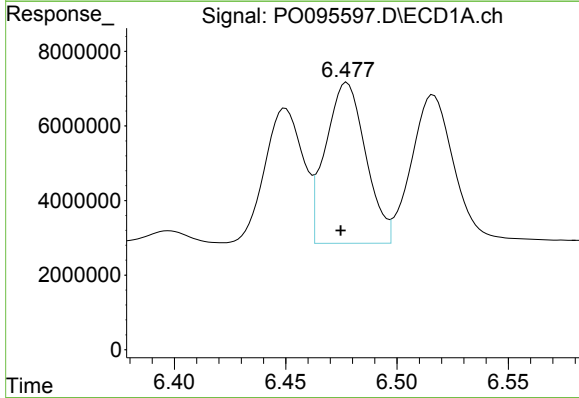
R.T.: 6.070 min
Delta R.T.: 0.002 min
Response: 55094088
Conc: 498.37 ng/ml

Instrument :
ECD_O
ClientSampleId :
AR1248CCC500



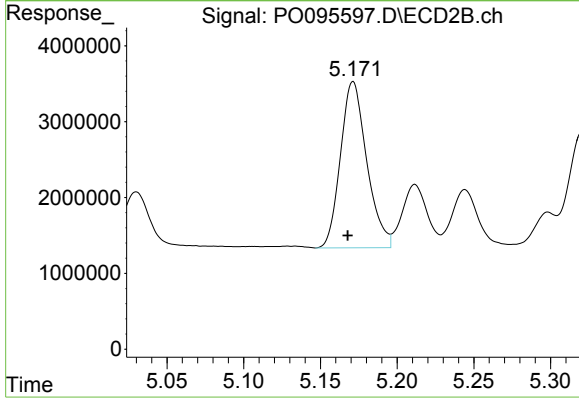
#23 AR-1248-3

R.T.: 4.998 min
Delta R.T.: 0.003 min
Response: 23208982
Conc: 514.23 ng/ml



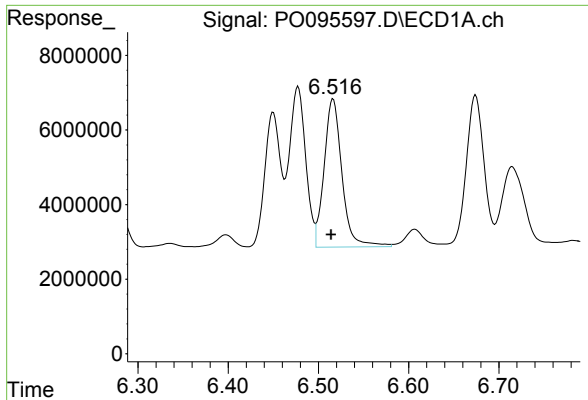
#24 AR-1248-4

R.T.: 6.478 min
Delta R.T.: 0.003 min
Response: 54114760
Conc: 492.59 ng/ml



#24 AR-1248-4

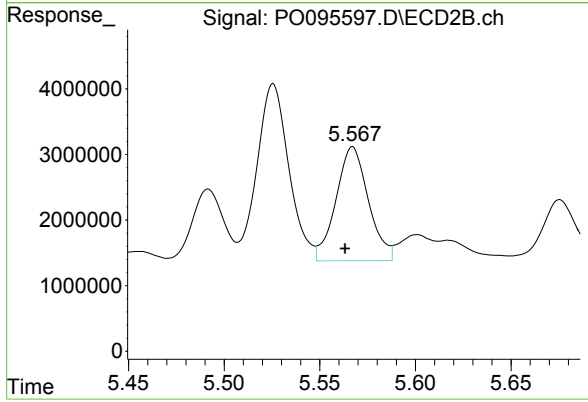
R.T.: 5.171 min
Delta R.T.: 0.003 min
Response: 26232472
Conc: 516.71 ng/ml



#25 AR-1248-5

R.T.: 6.516 min
Delta R.T.: 0.002 min
Response: 54675443
Conc: 486.32 ng/ml

Instrument :
ECD_O
ClientSampleId :
AR1248CCC500



#25 AR-1248-5

R.T.: 5.567 min
Delta R.T.: 0.004 min
Response: 20547546
Conc: 533.56 ng/ml