

Data Path : Z:\pestpcbsrv\HPCHEM1\ECD_0\Data\P0061322\
 Data File : P0087118.D
 Signal(s) : Signal #1: ECD1A.ch Signal #2: ECD2B.ch
 Acq On : 13 Jun 2022 15:45
 Operator : YP/AJ
 Sample : AR1254CCC500
 Misc :
 ALS Vial : 6 Sample Multiplier: 1

Instrument :
 ECD_0
 ClientSampleId :

Integration File signal 1: autoint1.e
 Integration File signal 2: autoint2.e
 Quant Time: Jun 13 17:52:41 2022
 Quant Method : Z:\pestpcbsrv\HPCHEM1\ECD_0\methods\P0060922.M
 Quant Title : GC EXTRACTABLES
 QLast Update : Fri Jun 10 04:33:49 2022
 Response via : Initial Calibration
 Integrator: ChemStation

Volume Inj. : 2 µl
 Signal #1 Phase : ZB-MR1 Signal #2 Phase: ZB-MR2
 Signal #1 Info : 30Mx0.32mmx 0.50µ Signal #2 Info : 30M x 0.32mm x 0.25µm

Compound	RT#1	RT#2	Resp#1	Resp#2	ng/ml	ng/ml
System Monitoring Compounds						
1) SA Tetrachlo...	4.492	3.640	116.6E6	55934818	49.914	49.679
2) SA Decachlor...	10.353	8.652	90680044	42967943	49.274	54.649
Target Compounds						
3) L1 AR-1016-1	5.675	4.729	1001495	317426	11.965	9.427
4) L1 AR-1016-2	5.696	4.749	483097	284130	4.108	6.108 #
5) L1 AR-1016-3	5.764	4.927	618597	267713	8.218	10.450 #
6) L1 AR-1016-4	5.860	4.967	604720	9186453	10.092	450.614 #
7) L1 AR-1016-5	6.159	5.180	12855455	5154797	218.732	201.705
8) L2 AR-1221-1	4.707	3.854	78572	61502	2.807	4.644 #
9) L2 AR-1221-2	4.801	3.941	1622128	747934	76.824	75.338
10) L2 AR-1221-3	4.865	4.019	331328	136260	5.129	4.683
11) L3 AR-1232-1	4.865	4.019	331328	136260	5.634	5.107
12) L3 AR-1232-2	5.209	4.749	123819	284130	4.278	13.102 #
13) L3 AR-1232-3	5.704	4.927	330916	267713	6.163	23.580 #
14) L3 AR-1232-4	5.860	5.008	604720	2604893	22.516	254.811 #
15) L3 AR-1232-5	5.953	5.180	23101139	5154797	1039.181	457.347 #
16) L4 AR-1242-1	5.675	4.729	1001495	317426	15.582	11.993
17) L4 AR-1242-2	5.696	4.749	483097	284130	5.287	7.888 #
18) L4 AR-1242-3	5.764	4.927	618597	267713	10.539	13.397 #
19) L4 AR-1242-4	5.860	5.008	604720	2604893	12.980	133.269 #
20) L4 AR-1242-5	6.608	5.533	12091807	22318686	254.841	956.026 #
21) L5 AR-1248-1	5.675	4.729	1001495	317426	20.642	16.042
22) L5 AR-1248-2	5.953	4.967	23101139	9186453	324.272	338.099
23) L5 AR-1248-3	6.159	5.008	12855455	2604893	168.406	91.149 #
24) L5 AR-1248-4	6.565	5.180	18268754	5154797	219.430	156.666 #
25) L5 AR-1248-5	6.608	5.573	12091807	2394580	150.678	74.915 #
26) L6 AR-1254-1	6.539	5.533	40833609	22318686	468.347	461.149
27) L6 AR-1254-2	6.760	5.680	61435325	19670978	470.430	461.202
28) L6 AR-1254-3	7.128	6.083	62037541	32097562	475.488	469.662
29) L6 AR-1254-4	7.416	6.311	44902401	19843915	469.965	470.368
30) L6 AR-1254-5	7.838	6.729	49264138	28823131	471.535	474.613
31) L7 AR-1260-1	7.295	6.214	25512409	16063399	253.166	342.935 #
32) L7 AR-1260-2	7.552	6.401	27769919	13170766	235.630	235.134
33) L7 AR-1260-3	7.899	6.553	6660517	13407261	78.569	251.956 #
34) L7 AR-1260-4	8.130	7.027	19813304	1360428	194.545	33.756 #
35) L7 AR-1260-5	8.470	7.267	6981070	3139470	38.411	33.468
36) L8 AR-1262-1	7.899	6.819	6660517	887011	54.165	36.663 #
37) L8 AR-1262-2	8.470	7.267	6981070	3139470	34.012	31.076
38) L8 AR-1262-3	8.809	7.552	6059436	133371	41.971	3.293 #
39) L8 AR-1262-4	8.909	7.612	81560	3326062	1.155	44.433 #
40) L8 AR-1262-5	9.567	8.109	479506	151177	6.205	4.394 #
41) L9 AR-1268-1	8.809	7.552	6059436	133371	23.571	1.117 #

Data Path : Z:\pestpcbsrv\HPCHEM1\ECD_0\Data\P0061322\
 Data File : P0087118.D
 Signal(s) : Signal #1: ECD1A.ch Signal #2: ECD2B.ch
 Acq On : 13 Jun 2022 15:45
 Operator : YP/AJ
 Sample : AR1254CCC500
 Misc :
 ALS Vial : 6 Sample Multiplier: 1

Instrument :
 ECD_0
 ClientSampleId :

Integration File signal 1: autoint1.e
 Integration File signal 2: autoint2.e
 Quant Time: Jun 13 17:52:41 2022
 Quant Method : Z:\pestpcbsrv\HPCHEM1\ECD_0\methods\P0060922.M
 Quant Title : GC EXTRACTABLES
 QLast Update : Fri Jun 10 04:33:49 2022
 Response via : Initial Calibration
 Integrator: ChemStation

Volume Inj. : 2 µl
 Signal #1 Phase : ZB-MR1 Signal #2 Phase: ZB-MR2
 Signal #1 Info : 30Mx0.32mmx 0.50µ Signal #2 Info : 30M x 0.32mm x 0.25µm

	Compound	RT#1	RT#2	Resp#1	Resp#2	ng/ml	ng/ml
42)	L9 AR-1268-2	8.909	7.612	81560	3326062	0.344	30.547 #
43)	L9 AR-1268-3	9.131	7.826	189230	118263	0.945	1.287 #
44)	L9 AR-1268-4	9.567	8.109	479506	151177	5.319	3.805 #
45)	L9 AR-1268-5	9.995	8.399	472504	283551	0.739	0.986 #

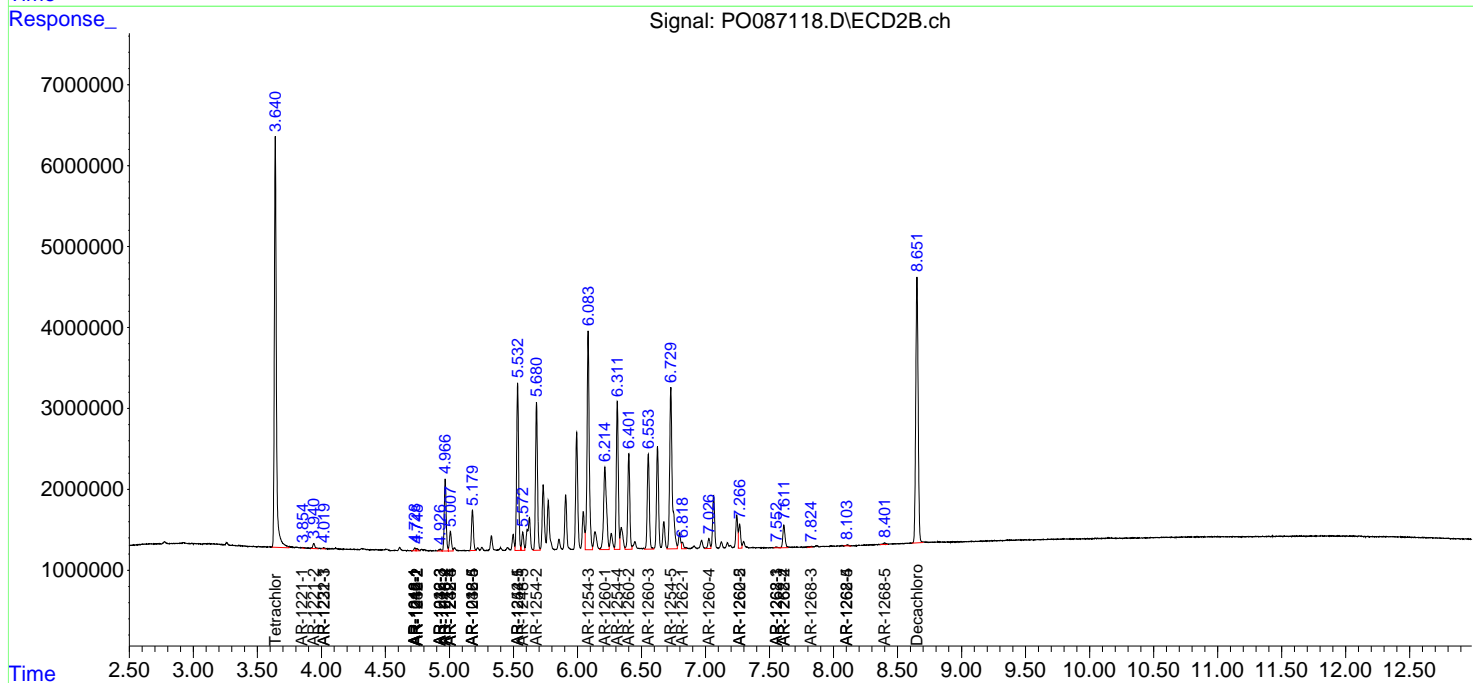
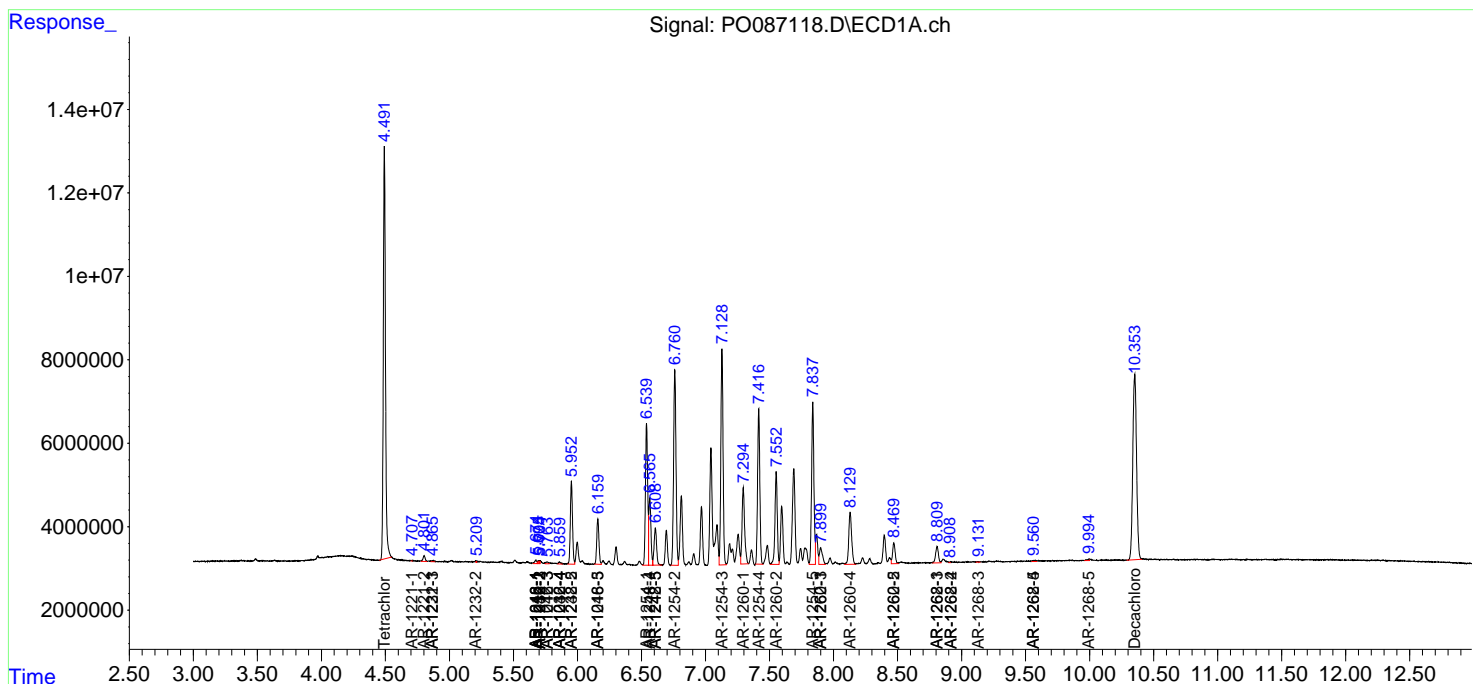
(f)=RT Delta > 1/2 Window (#)=Amounts differ by > 25% (m)=manual int.

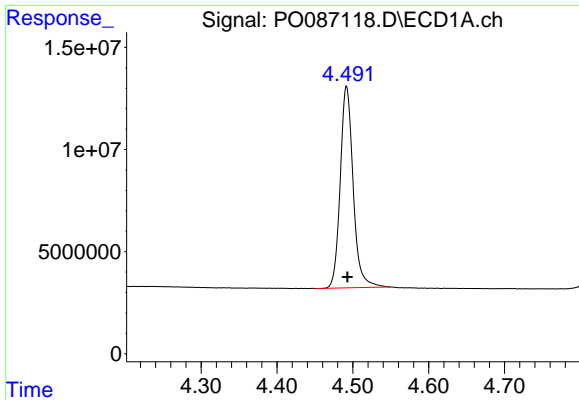
Data Path : Z:\pestpcbsrv\HPCHEM1\ECD_O\Data\PO061322\
 Data File : PO087118.D
 Signal(s) : Signal #1: ECD1A.ch Signal #2: ECD2B.ch
 Acq On : 13 Jun 2022 15:45
 Operator : YP/AJ
 Sample : AR1254CCC500
 Misc :
 ALS Vial : 6 Sample Multiplier: 1

Instrument :
 ECD_O
 ClientSampleId :

Integration File signal 1: autoint1.e
 Integration File signal 2: autoint2.e
 Quant Time: Jun 13 17:52:41 2022
 Quant Method : Z:\pestpcbsrv\HPCHEM1\ECD_O\methods\PO060922.M
 Quant Title : GC EXTRACTABLES
 QLast Update : Fri Jun 10 04:33:49 2022
 Response via : Initial Calibration
 Integrator: ChemStation

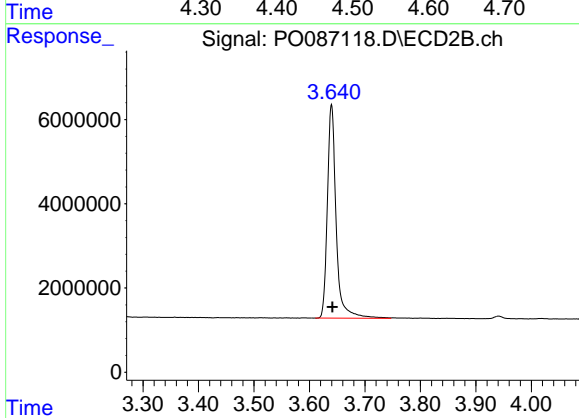
Volume Inj. : 2 µl
 Signal #1 Phase : ZB-MR1 Signal #2 Phase: ZB-MR2
 Signal #1 Info : 30Mx0.32mmx 0.50µ Signal #2 Info : 30M x 0.32mm x 0.25µm



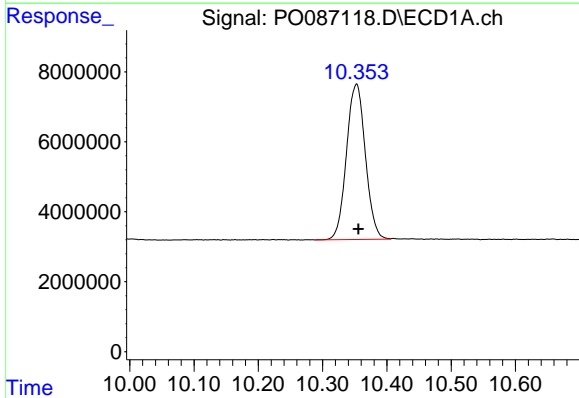


#1 Tetrachloro-m-xylene
R.T.: 4.492 min
Delta R.T.: -0.001 min
Response: 116648959
Conc: 49.91 ng/ml

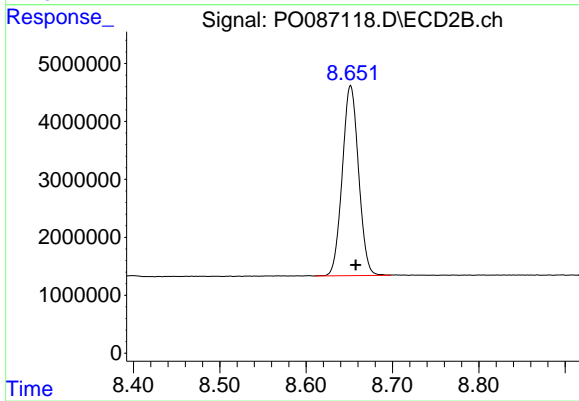
Instrument :
ECD_O
ClientSampleId :



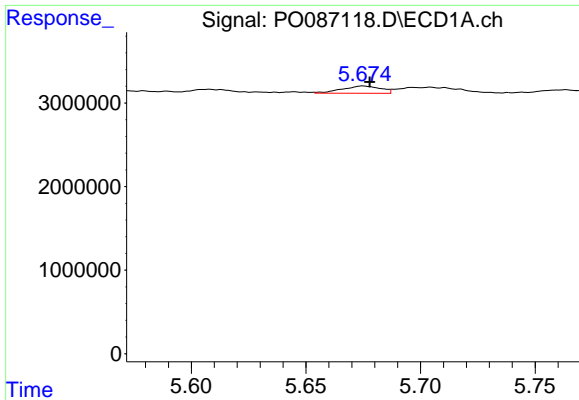
#1 Tetrachloro-m-xylene
R.T.: 3.640 min
Delta R.T.: -0.001 min
Response: 55934818
Conc: 49.68 ng/ml



#2 Decachlorobiphenyl
R.T.: 10.353 min
Delta R.T.: -0.003 min
Response: 90680044
Conc: 49.27 ng/ml



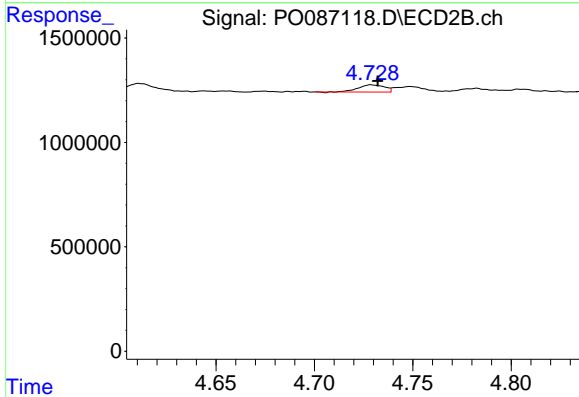
#2 Decachlorobiphenyl
R.T.: 8.652 min
Delta R.T.: -0.006 min
Response: 42967943
Conc: 54.65 ng/ml



#3 AR-1016-1

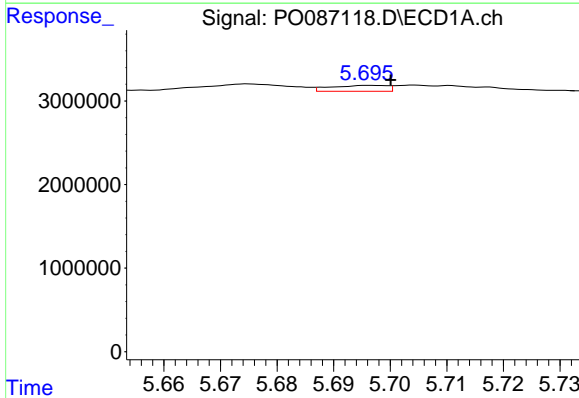
R.T.: 5.675 min
 Delta R.T.: -0.003 min
 Response: 1001495
 Conc: 11.96 ng/ml

Instrument :
 ECD_O
 ClientSampleId :



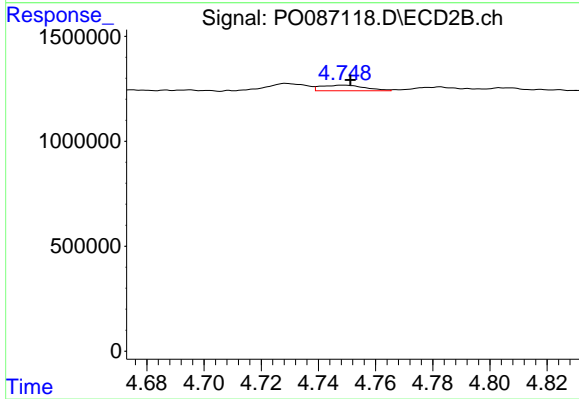
#3 AR-1016-1

R.T.: 4.729 min
 Delta R.T.: -0.003 min
 Response: 317426
 Conc: 9.43 ng/ml



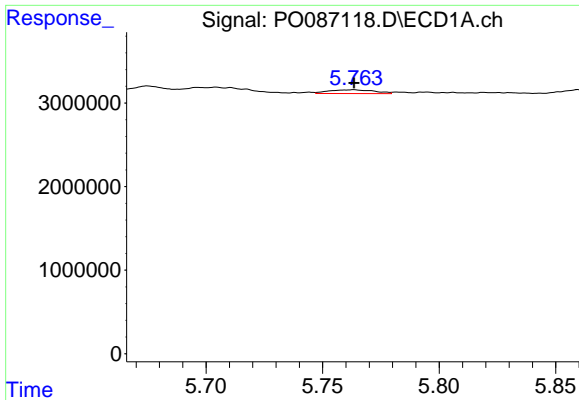
#4 AR-1016-2

R.T.: 5.696 min
 Delta R.T.: -0.004 min
 Response: 483097
 Conc: 4.11 ng/ml



#4 AR-1016-2

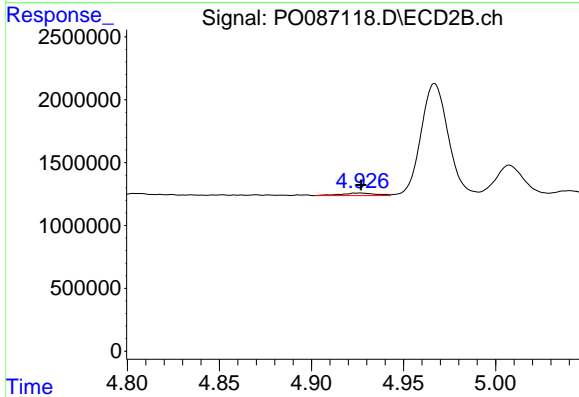
R.T.: 4.749 min
 Delta R.T.: -0.003 min
 Response: 284130
 Conc: 6.11 ng/ml



#5 AR-1016-3

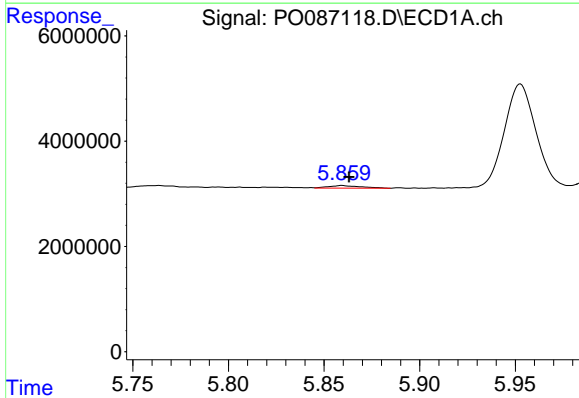
R.T.: 5.764 min
 Delta R.T.: 0.000 min
 Response: 618597
 Conc: 8.22 ng/ml

Instrument :
 ECD_O
 ClientSampleId :



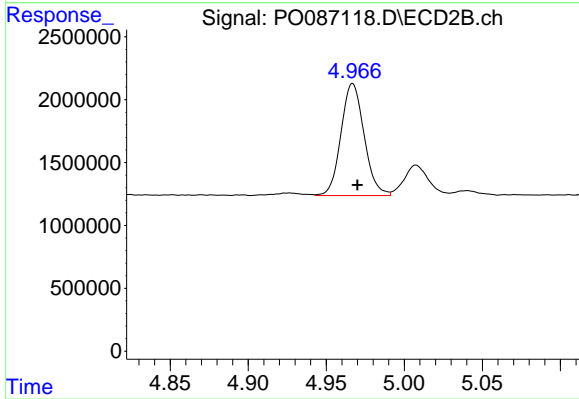
#5 AR-1016-3

R.T.: 4.927 min
 Delta R.T.: 0.000 min
 Response: 267713
 Conc: 10.45 ng/ml



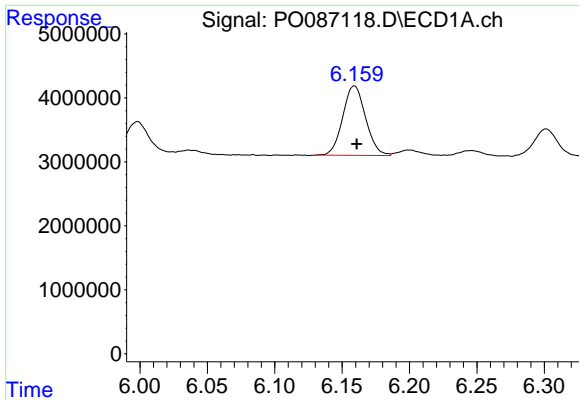
#6 AR-1016-4

R.T.: 5.860 min
 Delta R.T.: -0.004 min
 Response: 604720
 Conc: 10.09 ng/ml



#6 AR-1016-4

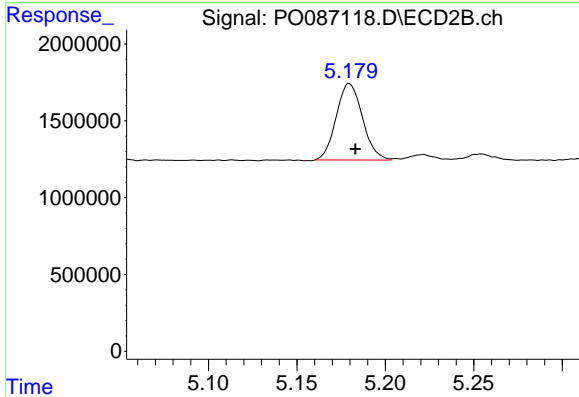
R.T.: 4.967 min
 Delta R.T.: -0.003 min
 Response: 9186453
 Conc: 450.61 ng/ml



#7 AR-1016-5

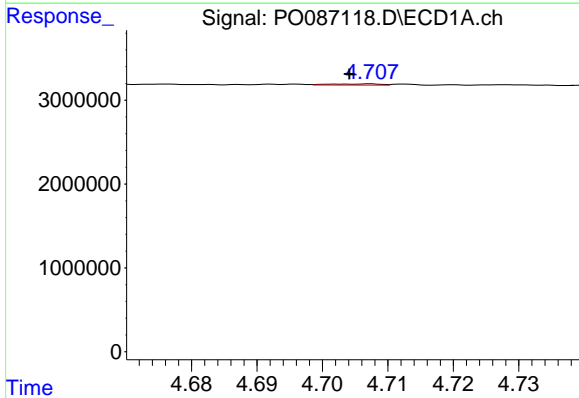
R.T.: 6.159 min
 Delta R.T.: -0.002 min
 Response: 12855455
 Conc: 218.73 ng/ml

Instrument :
 ECD_O
 ClientSampleId :



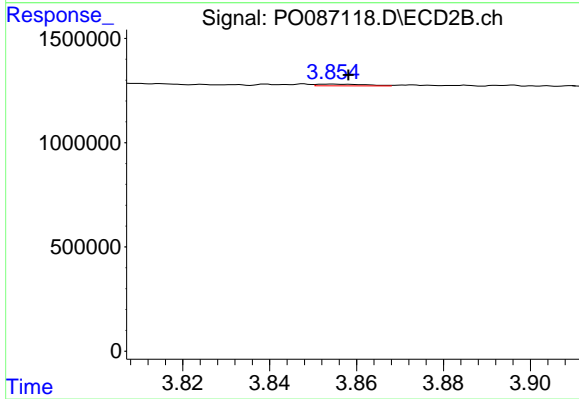
#7 AR-1016-5

R.T.: 5.180 min
 Delta R.T.: -0.003 min
 Response: 5154797
 Conc: 201.70 ng/ml



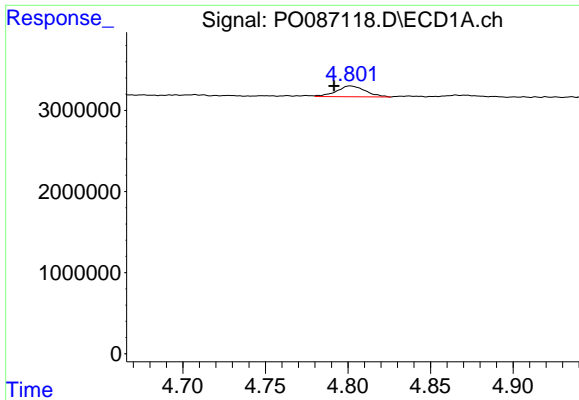
#8 AR-1221-1

R.T.: 4.707 min
 Delta R.T.: 0.003 min
 Response: 78572
 Conc: 2.81 ng/ml



#8 AR-1221-1

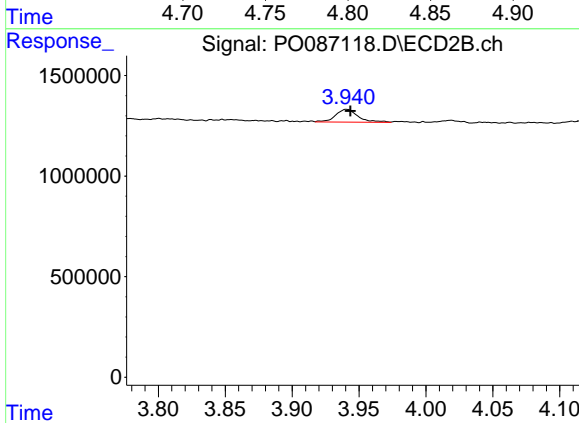
R.T.: 3.854 min
 Delta R.T.: -0.004 min
 Response: 61502
 Conc: 4.64 ng/ml



#9 AR-1221-2

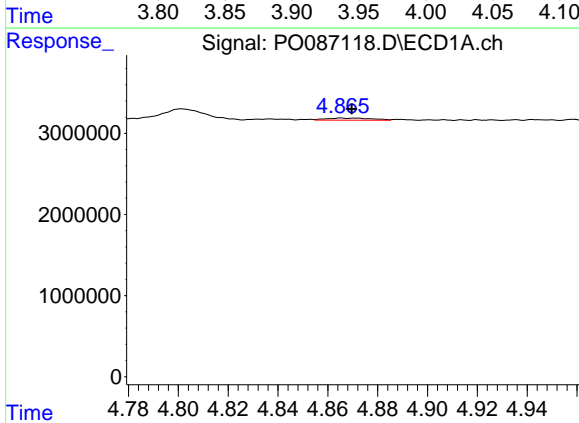
R.T.: 4.801 min
 Delta R.T.: 0.010 min
 Response: 1622128
 Conc: 76.82 ng/ml

Instrument :
 ECD_O
 ClientSampleId :



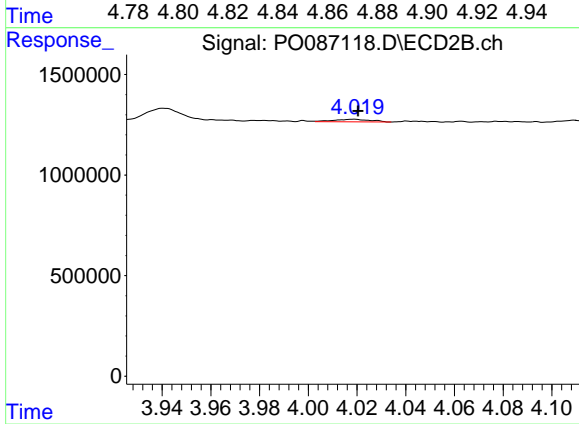
#9 AR-1221-2

R.T.: 3.941 min
 Delta R.T.: -0.003 min
 Response: 747934
 Conc: 75.34 ng/ml



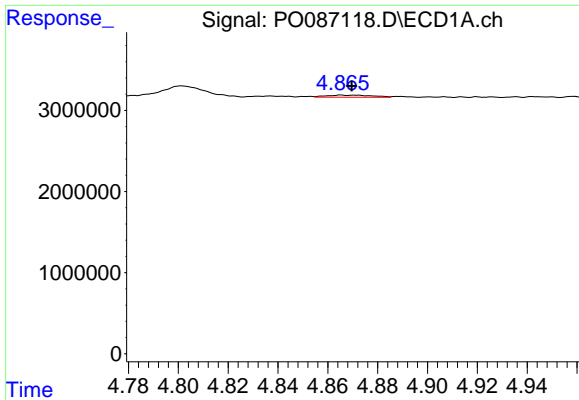
#10 AR-1221-3

R.T.: 4.865 min
 Delta R.T.: -0.004 min
 Response: 331328
 Conc: 5.13 ng/ml



#10 AR-1221-3

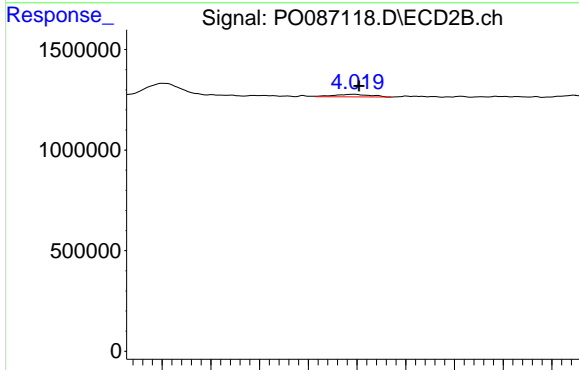
R.T.: 4.019 min
 Delta R.T.: -0.001 min
 Response: 136260
 Conc: 4.68 ng/ml



#11 AR-1232-1

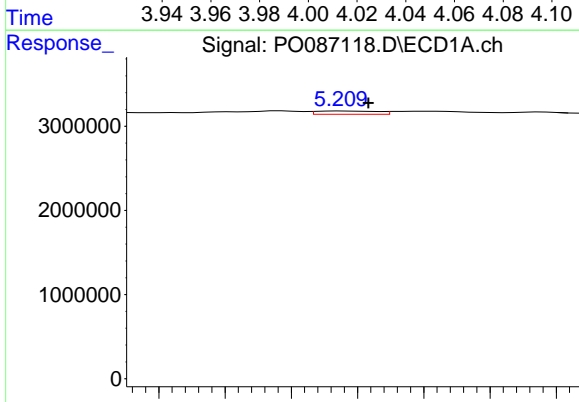
R.T.: 4.865 min
 Delta R.T.: -0.004 min
 Response: 331328
 Conc: 5.63 ng/ml

Instrument :
 ECD_O
 ClientSampleId :



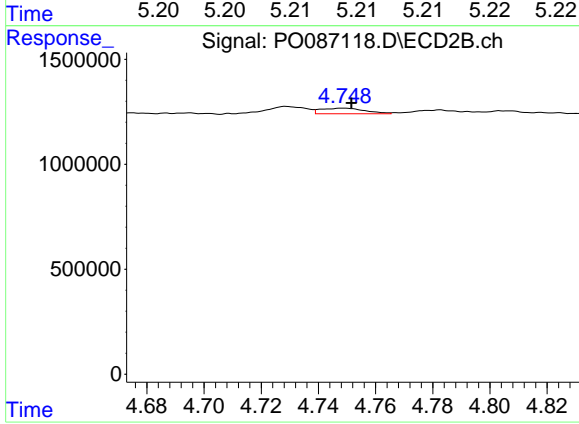
#11 AR-1232-1

R.T.: 4.019 min
 Delta R.T.: -0.002 min
 Response: 136260
 Conc: 5.11 ng/ml



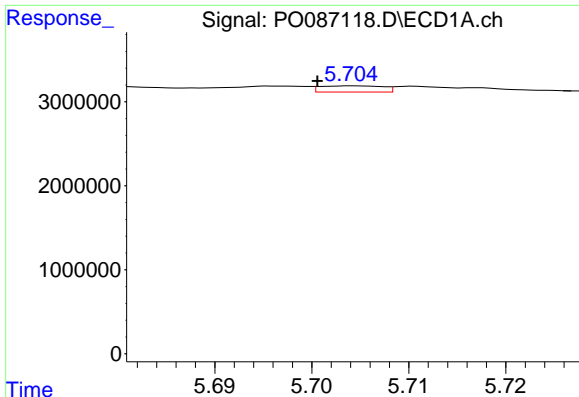
#12 AR-1232-2

R.T.: 5.209 min
 Delta R.T.: -0.002 min
 Response: 123819
 Conc: 4.28 ng/ml



#12 AR-1232-2

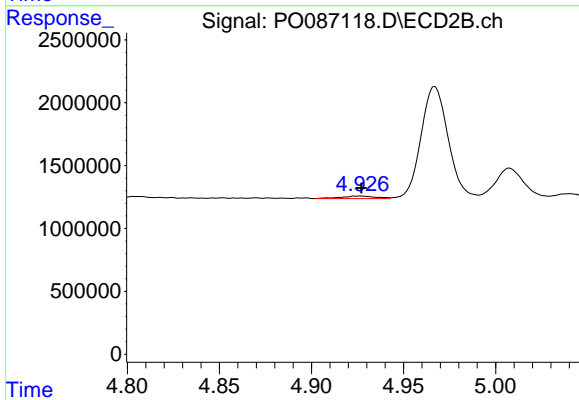
R.T.: 4.749 min
 Delta R.T.: -0.003 min
 Response: 284130
 Conc: 13.10 ng/ml



#13 AR-1232-3

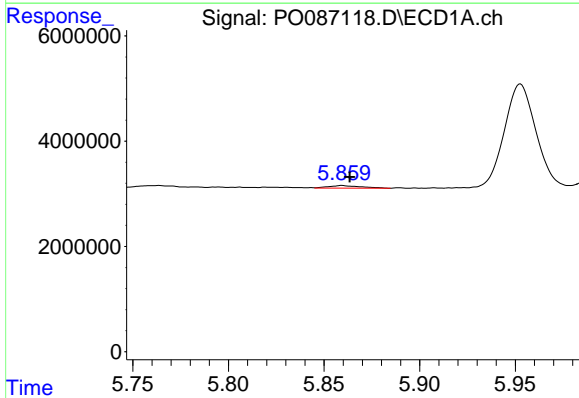
R.T.: 5.704 min
 Delta R.T.: 0.004 min
 Response: 330916
 Conc: 6.16 ng/ml

Instrument :
 ECD_O
 ClientSampleId :



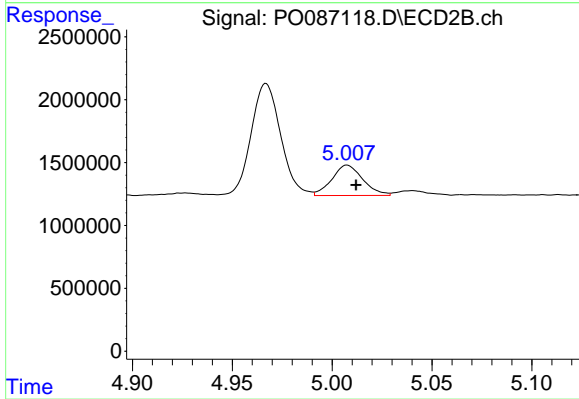
#13 AR-1232-3

R.T.: 4.927 min
 Delta R.T.: 0.000 min
 Response: 267713
 Conc: 23.58 ng/ml



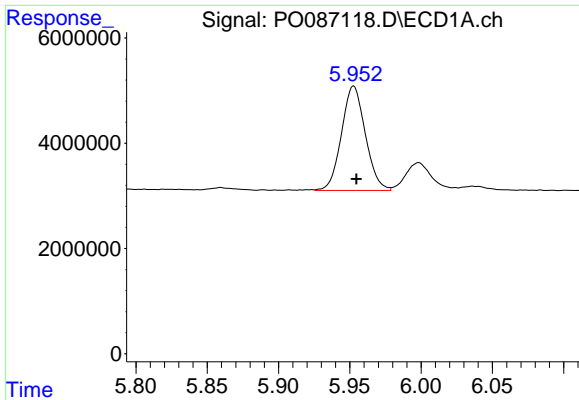
#14 AR-1232-4

R.T.: 5.860 min
 Delta R.T.: -0.004 min
 Response: 604720
 Conc: 22.52 ng/ml



#14 AR-1232-4

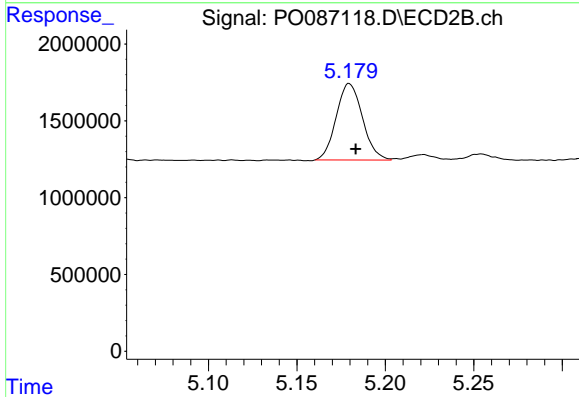
R.T.: 5.008 min
 Delta R.T.: -0.004 min
 Response: 2604893
 Conc: 254.81 ng/ml



#15 AR-1232-5

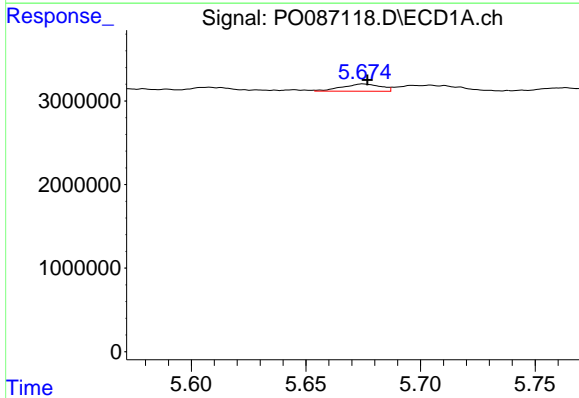
R.T.: 5.953 min
 Delta R.T.: -0.002 min
 Response: 23101139
 Conc: 1039.18 ng/ml

Instrument :
 ECD_O
 ClientSampleId :



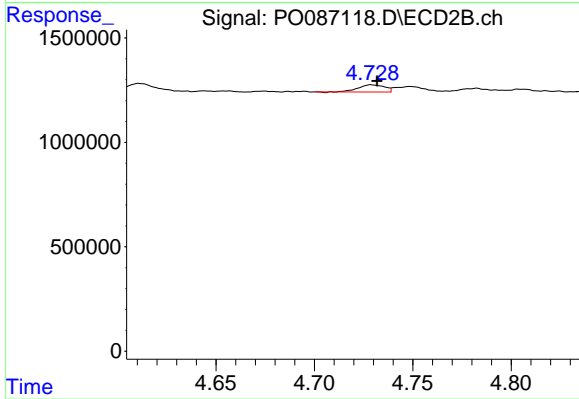
#15 AR-1232-5

R.T.: 5.180 min
 Delta R.T.: -0.004 min
 Response: 5154797
 Conc: 457.35 ng/ml



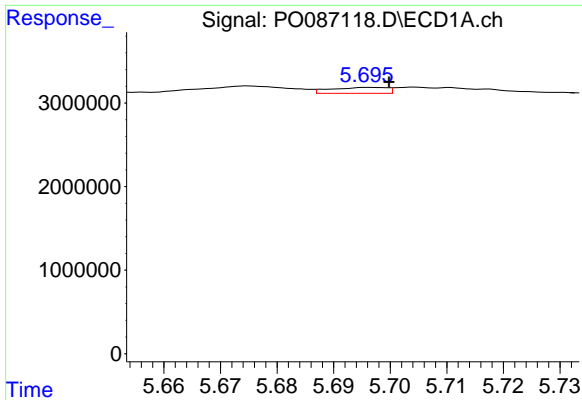
#16 AR-1242-1

R.T.: 5.675 min
 Delta R.T.: -0.002 min
 Response: 1001495
 Conc: 15.58 ng/ml



#16 AR-1242-1

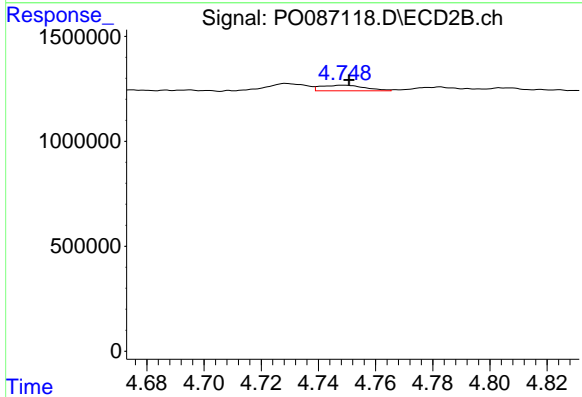
R.T.: 4.729 min
 Delta R.T.: -0.003 min
 Response: 317426
 Conc: 11.99 ng/ml



#17 AR-1242-2

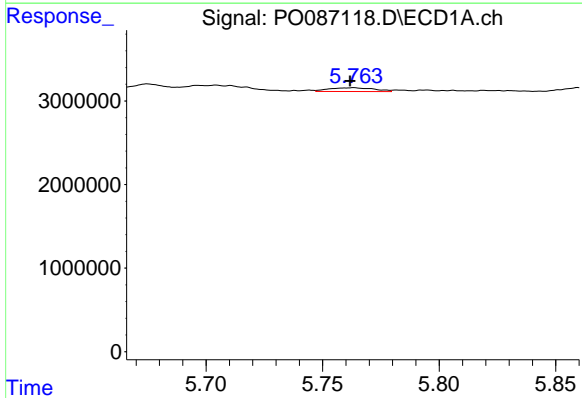
R.T.: 5.696 min
 Delta R.T.: -0.004 min
 Response: 483097
 Conc: 5.29 ng/ml

Instrument :
 ECD_O
 ClientSampleId :



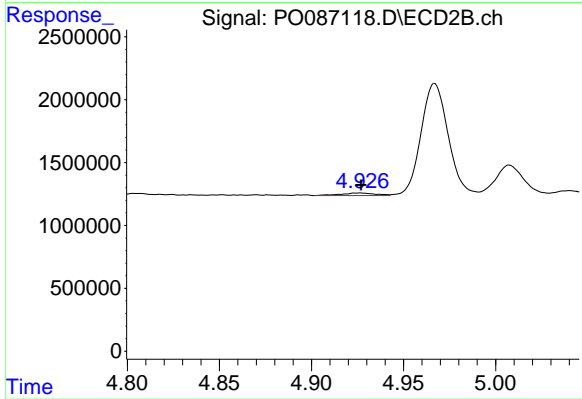
#17 AR-1242-2

R.T.: 4.749 min
 Delta R.T.: -0.002 min
 Response: 284130
 Conc: 7.89 ng/ml



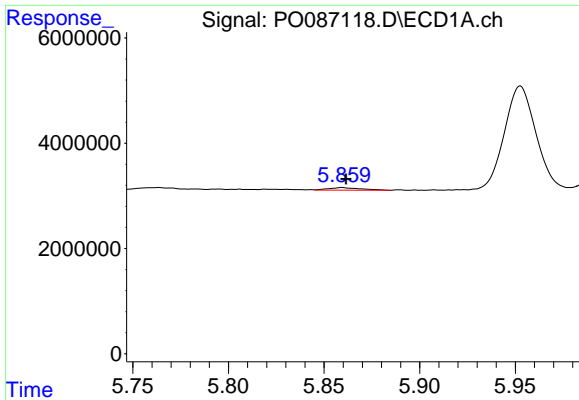
#18 AR-1242-3

R.T.: 5.764 min
 Delta R.T.: 0.002 min
 Response: 618597
 Conc: 10.54 ng/ml



#18 AR-1242-3

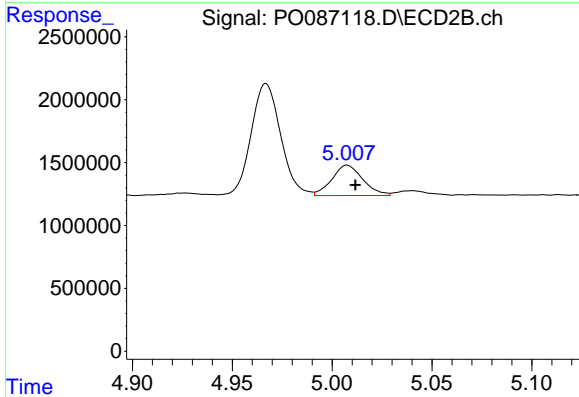
R.T.: 4.927 min
 Delta R.T.: 0.000 min
 Response: 267713
 Conc: 13.40 ng/ml



#19 AR-1242-4

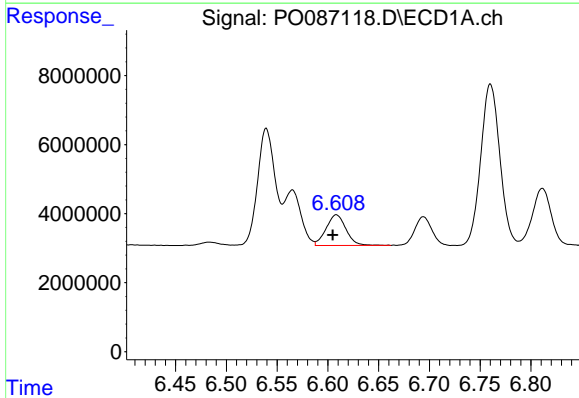
R.T.: 5.860 min
 Delta R.T.: -0.002 min
 Response: 604720
 Conc: 12.98 ng/ml

Instrument :
 ECD_O
 ClientSampleId :



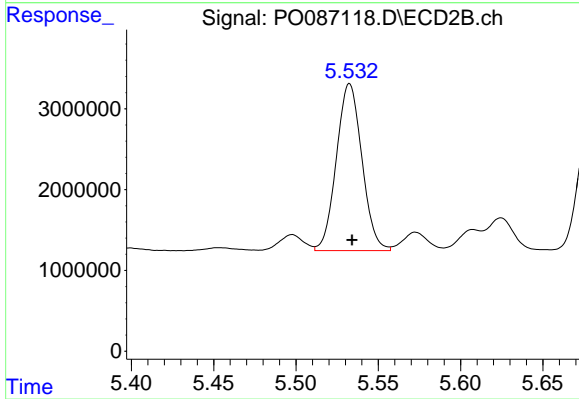
#19 AR-1242-4

R.T.: 5.008 min
 Delta R.T.: -0.004 min
 Response: 2604893
 Conc: 133.27 ng/ml



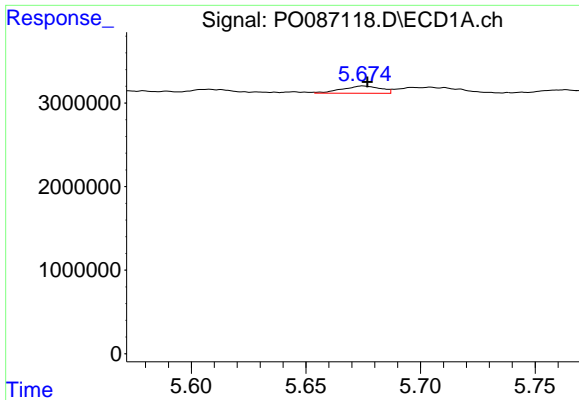
#20 AR-1242-5

R.T.: 6.608 min
 Delta R.T.: 0.003 min
 Response: 12091807
 Conc: 254.84 ng/ml



#20 AR-1242-5

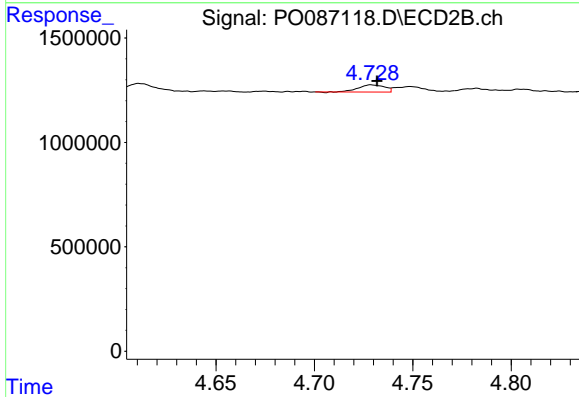
R.T.: 5.533 min
 Delta R.T.: -0.001 min
 Response: 22318686
 Conc: 956.03 ng/ml



#21 AR-1248-1

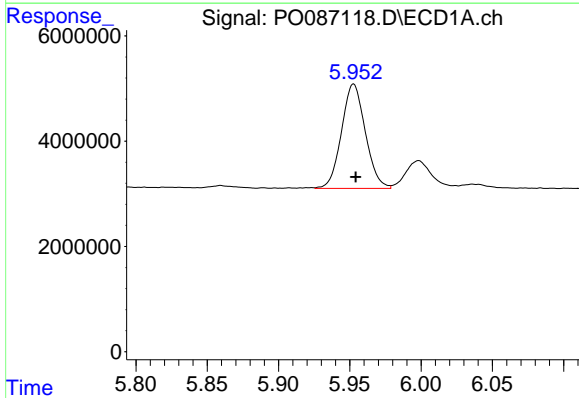
R.T.: 5.675 min
 Delta R.T.: -0.002 min
 Response: 1001495
 Conc: 20.64 ng/ml

Instrument :
 ECD_O
 ClientSampleId :



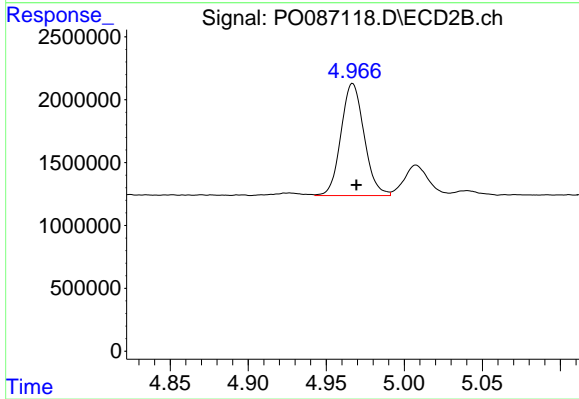
#21 AR-1248-1

R.T.: 4.729 min
 Delta R.T.: -0.003 min
 Response: 317426
 Conc: 16.04 ng/ml



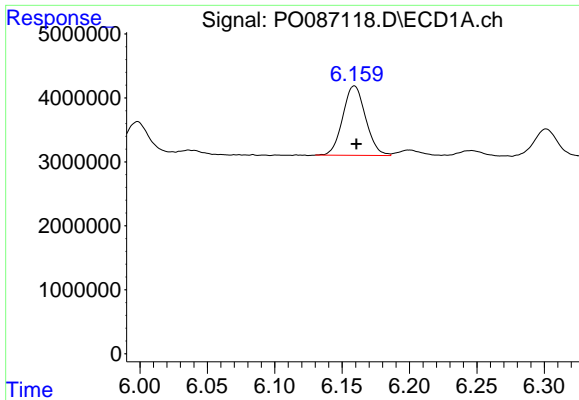
#22 AR-1248-2

R.T.: 5.953 min
 Delta R.T.: -0.001 min
 Response: 23101139
 Conc: 324.27 ng/ml



#22 AR-1248-2

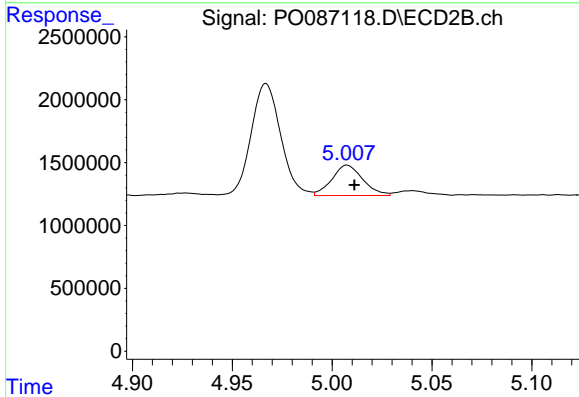
R.T.: 4.967 min
 Delta R.T.: -0.003 min
 Response: 9186453
 Conc: 338.10 ng/ml



#23 AR-1248-3

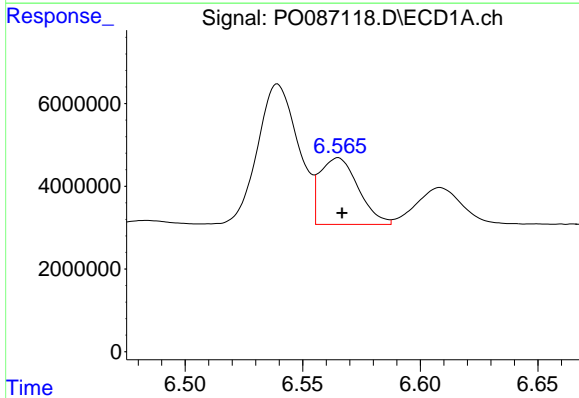
R.T.: 6.159 min
 Delta R.T.: -0.001 min
 Response: 12855455
 Conc: 168.41 ng/ml

Instrument :
 ECD_O
 ClientSampleId :



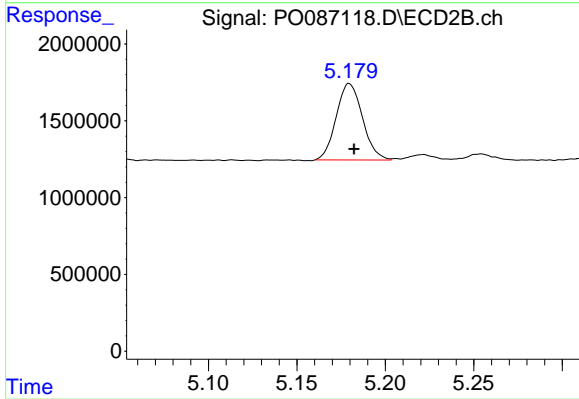
#23 AR-1248-3

R.T.: 5.008 min
 Delta R.T.: -0.004 min
 Response: 2604893
 Conc: 91.15 ng/ml



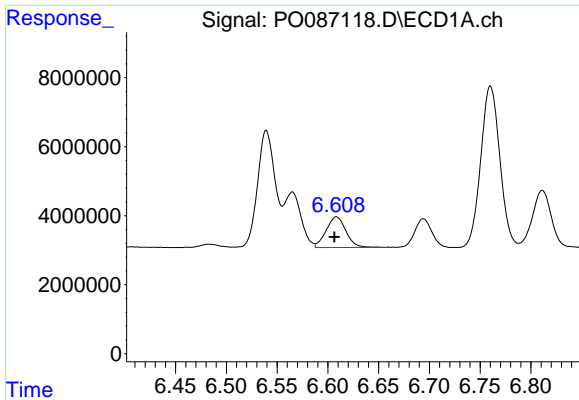
#24 AR-1248-4

R.T.: 6.565 min
 Delta R.T.: -0.002 min
 Response: 18268754
 Conc: 219.43 ng/ml



#24 AR-1248-4

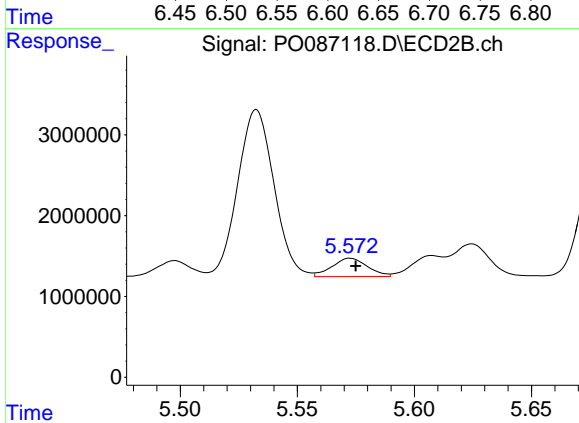
R.T.: 5.180 min
 Delta R.T.: -0.003 min
 Response: 5154797
 Conc: 156.67 ng/ml



#25 AR-1248-5

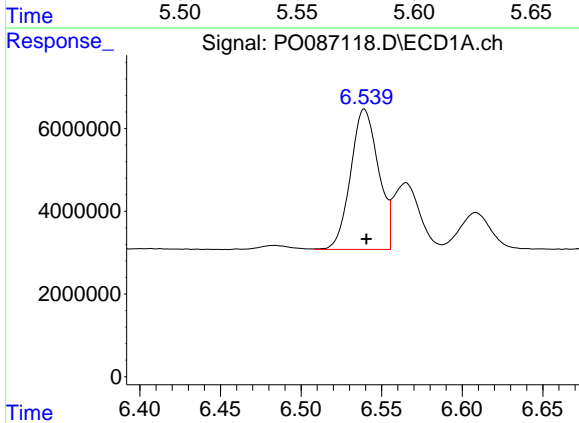
R.T.: 6.608 min
 Delta R.T.: 0.002 min
 Response: 12091807
 Conc: 150.68 ng/ml

Instrument :
 ECD_O
 ClientSampleId :



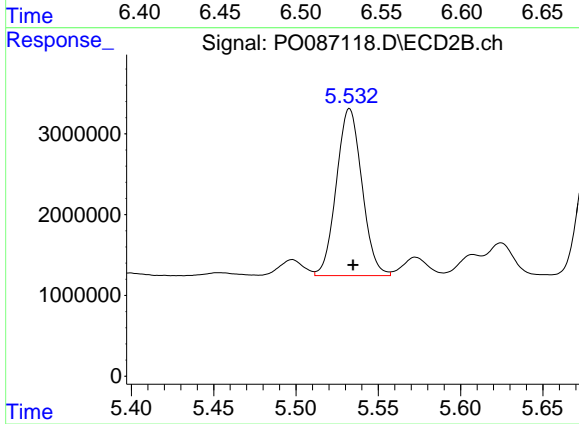
#25 AR-1248-5

R.T.: 5.573 min
 Delta R.T.: -0.002 min
 Response: 2394580
 Conc: 74.91 ng/ml



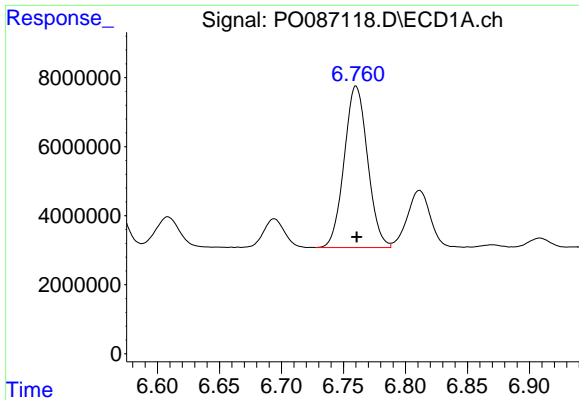
#26 AR-1254-1

R.T.: 6.539 min
 Delta R.T.: -0.001 min
 Response: 40833609
 Conc: 468.35 ng/ml



#26 AR-1254-1

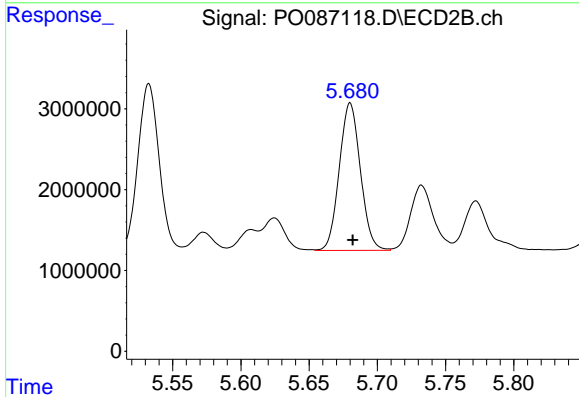
R.T.: 5.533 min
 Delta R.T.: -0.002 min
 Response: 22318686
 Conc: 461.15 ng/ml



#27 AR-1254-2

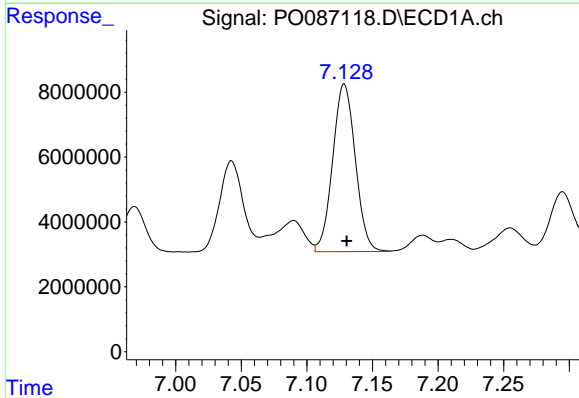
R.T.: 6.760 min
 Delta R.T.: 0.000 min
 Response: 61435325
 Conc: 470.43 ng/ml

Instrument :
 ECD_O
 ClientSampleId :



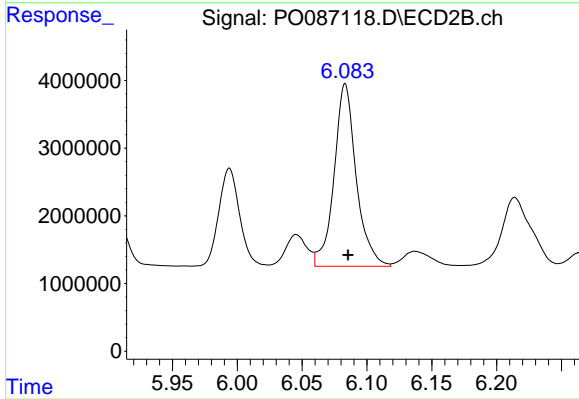
#27 AR-1254-2

R.T.: 5.680 min
 Delta R.T.: -0.002 min
 Response: 19670978
 Conc: 461.20 ng/ml



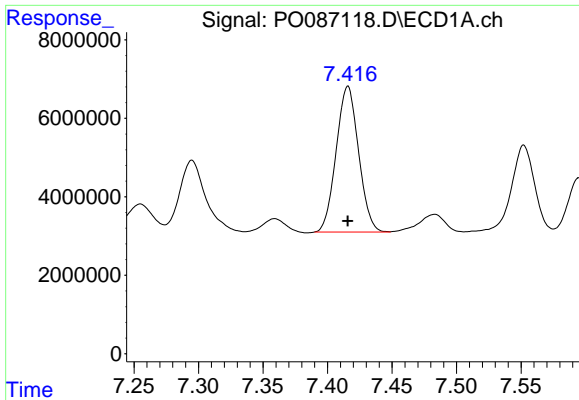
#28 AR-1254-3

R.T.: 7.128 min
 Delta R.T.: -0.002 min
 Response: 62037541
 Conc: 475.49 ng/ml



#28 AR-1254-3

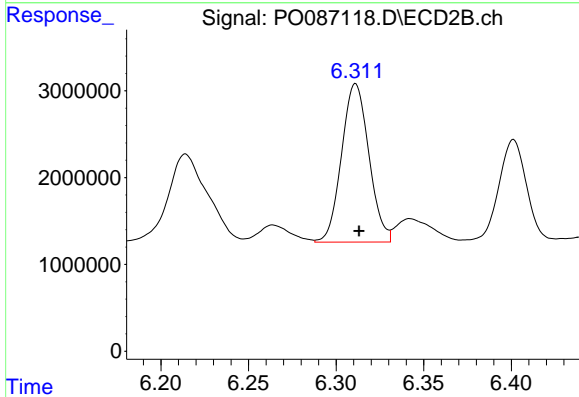
R.T.: 6.083 min
 Delta R.T.: -0.002 min
 Response: 32097562
 Conc: 469.66 ng/ml



#29 AR-1254-4

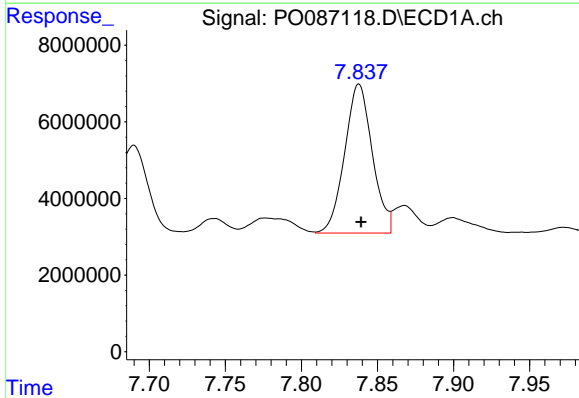
R.T.: 7.416 min
 Delta R.T.: 0.000 min
 Response: 44902401
 Conc: 469.97 ng/ml

Instrument :
 ECD_O
 ClientSampleId :



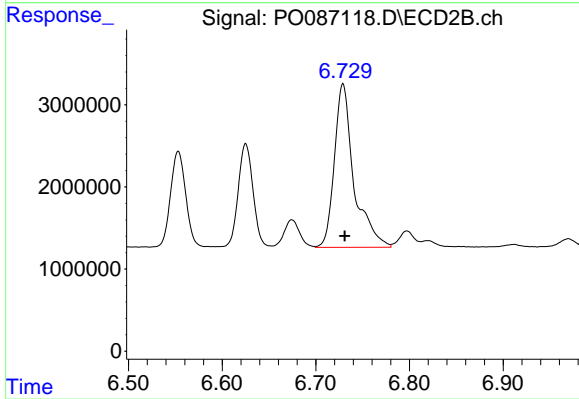
#29 AR-1254-4

R.T.: 6.311 min
 Delta R.T.: -0.002 min
 Response: 19843915
 Conc: 470.37 ng/ml



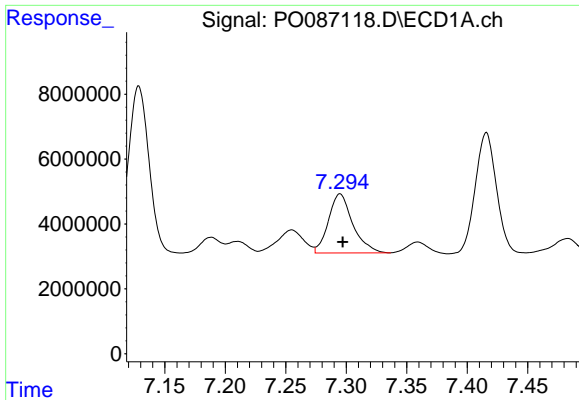
#30 AR-1254-5

R.T.: 7.838 min
 Delta R.T.: -0.001 min
 Response: 49264138
 Conc: 471.53 ng/ml



#30 AR-1254-5

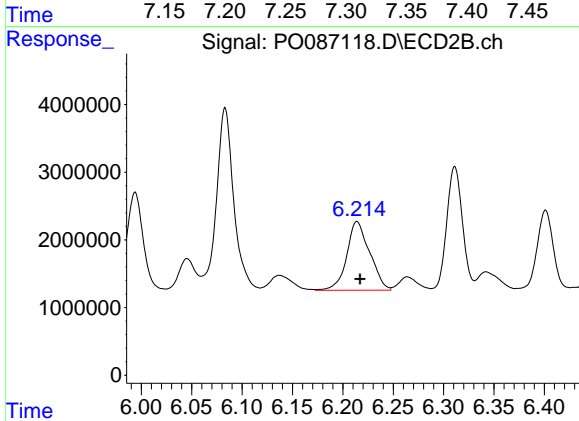
R.T.: 6.729 min
 Delta R.T.: -0.002 min
 Response: 28823131
 Conc: 474.61 ng/ml



#31 AR-1260-1

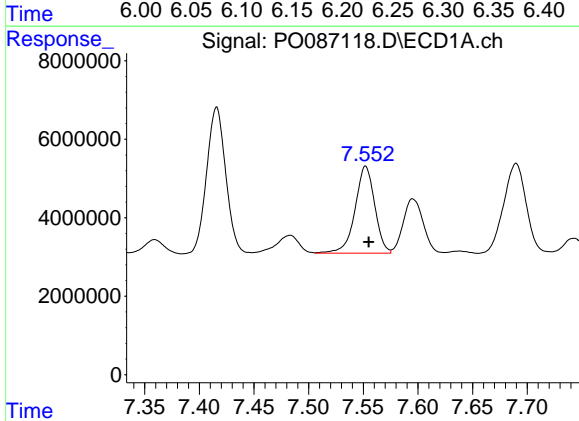
R.T.: 7.295 min
 Delta R.T.: -0.002 min
 Response: 25512409
 Conc: 253.17 ng/ml

Instrument :
 ECD_O
 ClientSampleId :



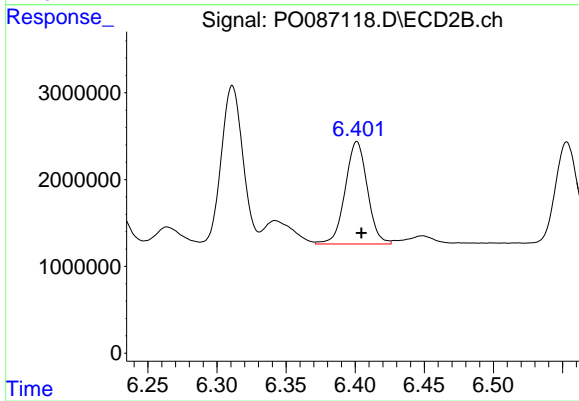
#31 AR-1260-1

R.T.: 6.214 min
 Delta R.T.: -0.003 min
 Response: 16063399
 Conc: 342.94 ng/ml



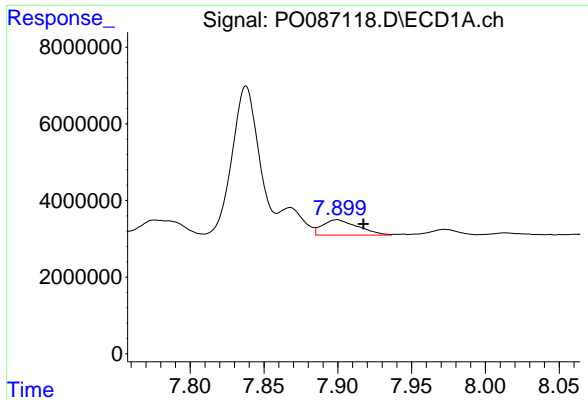
#32 AR-1260-2

R.T.: 7.552 min
 Delta R.T.: -0.003 min
 Response: 27769919
 Conc: 235.63 ng/ml



#32 AR-1260-2

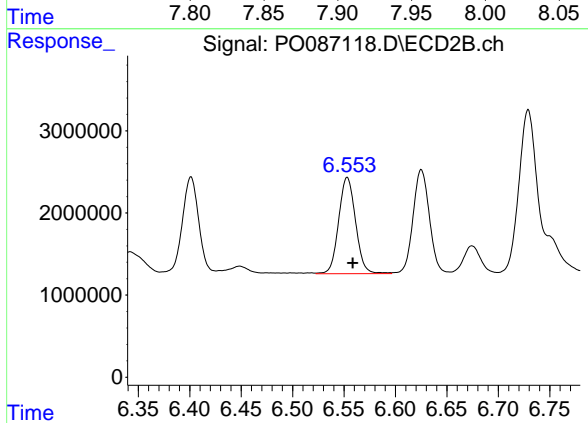
R.T.: 6.401 min
 Delta R.T.: -0.003 min
 Response: 13170766
 Conc: 235.13 ng/ml



#33 AR-1260-3

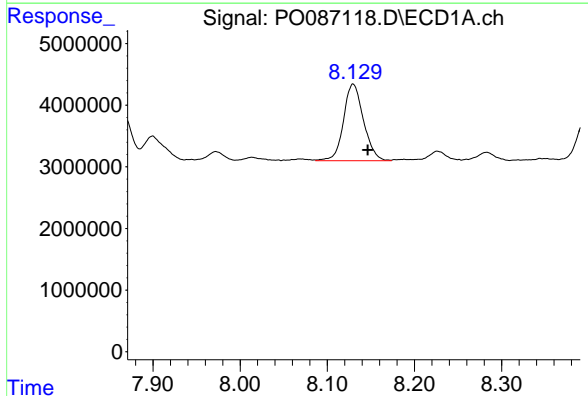
R.T.: 7.899 min
 Delta R.T.: -0.018 min
 Response: 6660517
 Conc: 78.57 ng/ml

Instrument :
 ECD_O
 ClientSampleId :



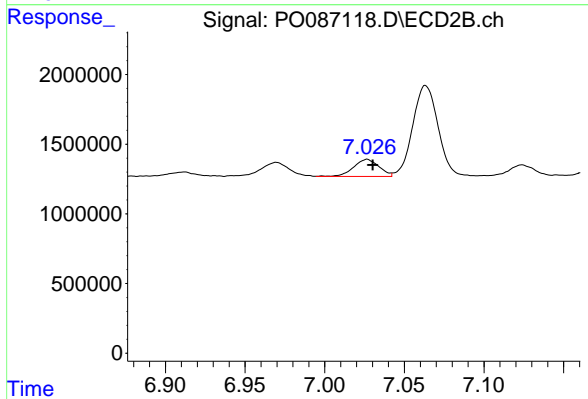
#33 AR-1260-3

R.T.: 6.553 min
 Delta R.T.: -0.005 min
 Response: 13407261
 Conc: 251.96 ng/ml



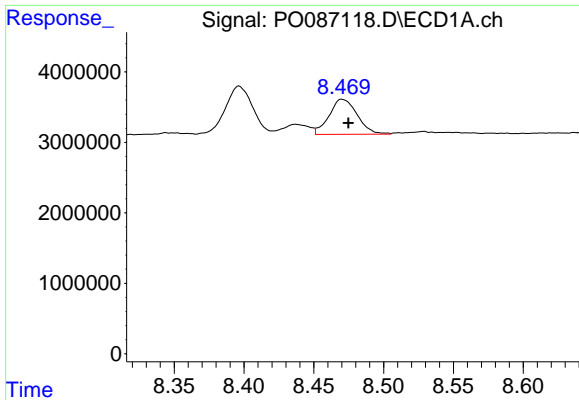
#34 AR-1260-4

R.T.: 8.130 min
 Delta R.T.: -0.017 min
 Response: 19813304
 Conc: 194.54 ng/ml



#34 AR-1260-4

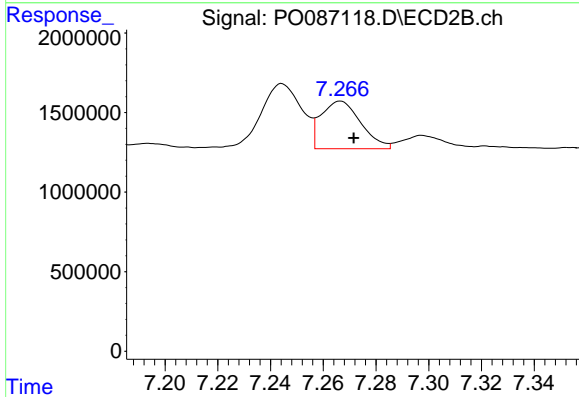
R.T.: 7.027 min
 Delta R.T.: -0.003 min
 Response: 1360428
 Conc: 33.76 ng/ml



#35 AR-1260-5

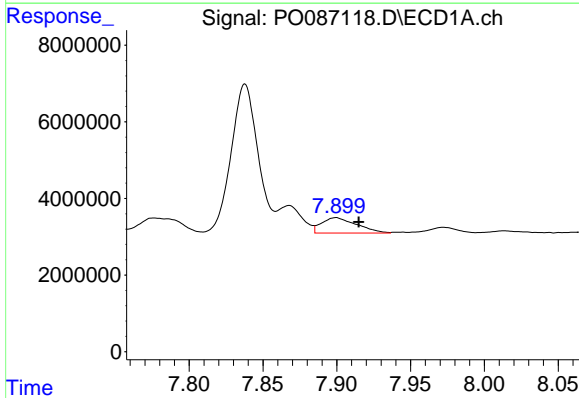
R.T.: 8.470 min
 Delta R.T.: -0.005 min
 Response: 6981070
 Conc: 38.41 ng/ml

Instrument :
 ECD_O
 ClientSampleId :



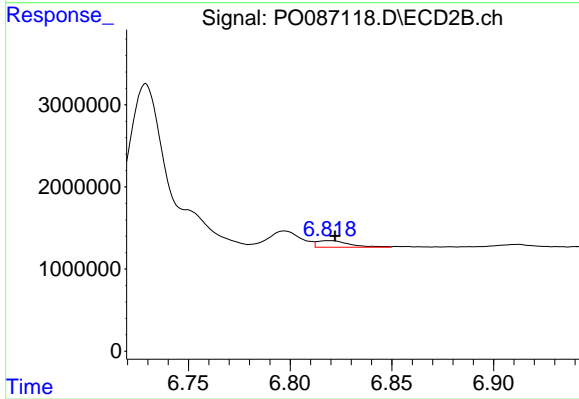
#35 AR-1260-5

R.T.: 7.267 min
 Delta R.T.: -0.005 min
 Response: 3139470
 Conc: 33.47 ng/ml



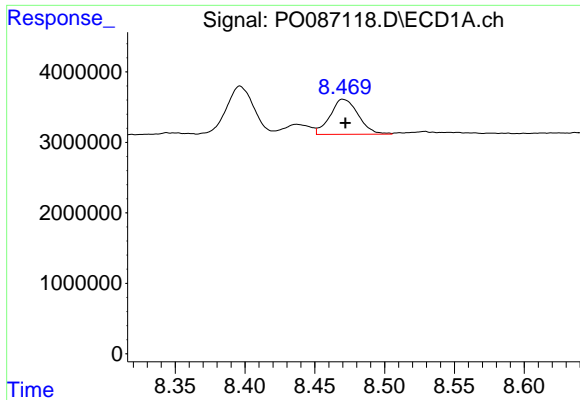
#36 AR-1262-1

R.T.: 7.899 min
 Delta R.T.: -0.015 min
 Response: 6660517
 Conc: 54.16 ng/ml



#36 AR-1262-1

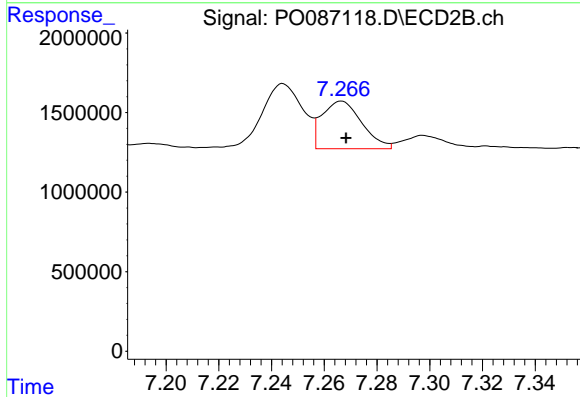
R.T.: 6.819 min
 Delta R.T.: -0.003 min
 Response: 887011
 Conc: 36.66 ng/ml



#37 AR-1262-2

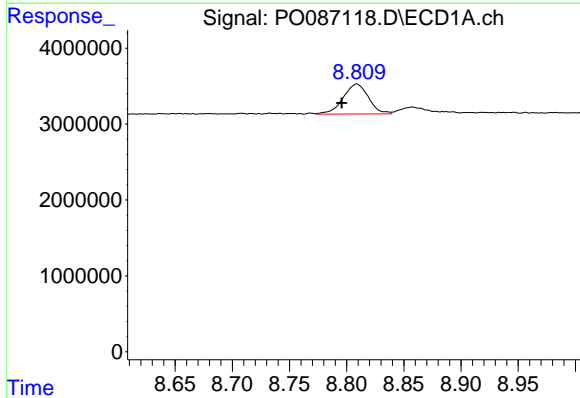
R.T.: 8.470 min
 Delta R.T.: -0.002 min
 Response: 6981070
 Conc: 34.01 ng/ml

Instrument :
 ECD_O
 ClientSampleId :



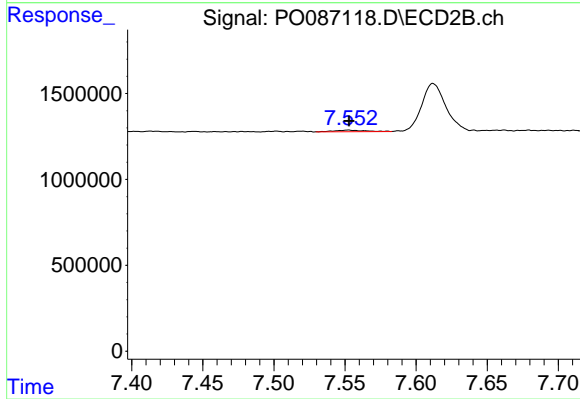
#37 AR-1262-2

R.T.: 7.267 min
 Delta R.T.: -0.002 min
 Response: 3139470
 Conc: 31.08 ng/ml



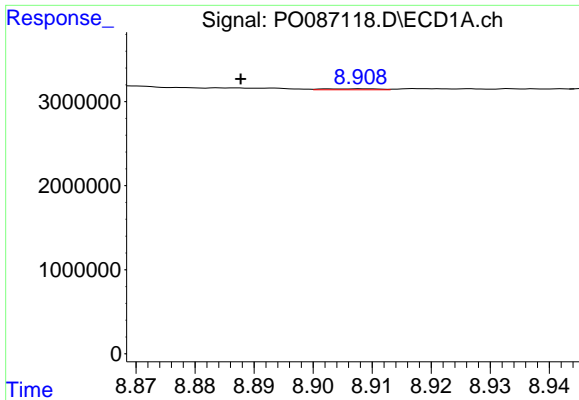
#38 AR-1262-3

R.T.: 8.809 min
 Delta R.T.: 0.013 min
 Response: 6059436
 Conc: 41.97 ng/ml



#38 AR-1262-3

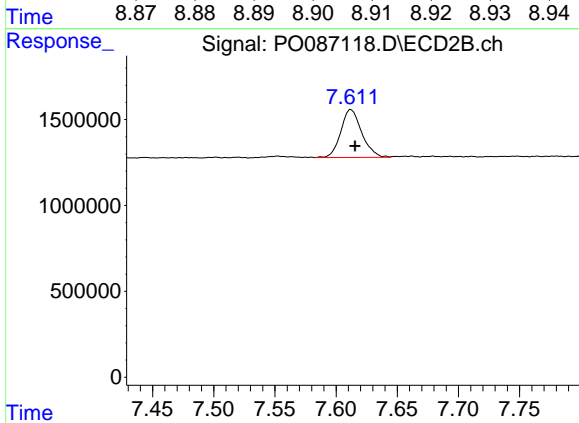
R.T.: 7.552 min
 Delta R.T.: 0.000 min
 Response: 133371
 Conc: 3.29 ng/ml



#39 AR-1262-4

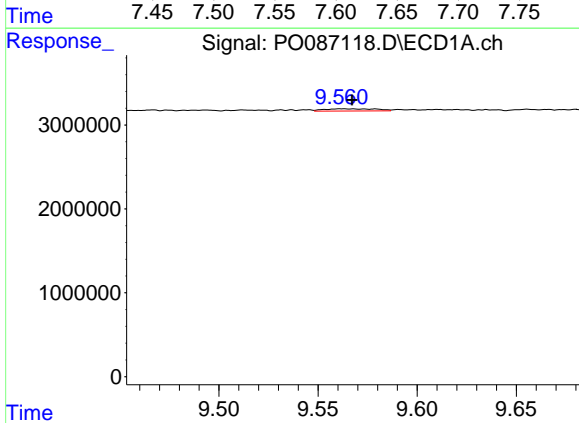
R.T.: 8.909 min
 Delta R.T.: 0.021 min
 Response: 81560
 Conc: 1.16 ng/ml

Instrument :
 ECD_O
 ClientSampleId :



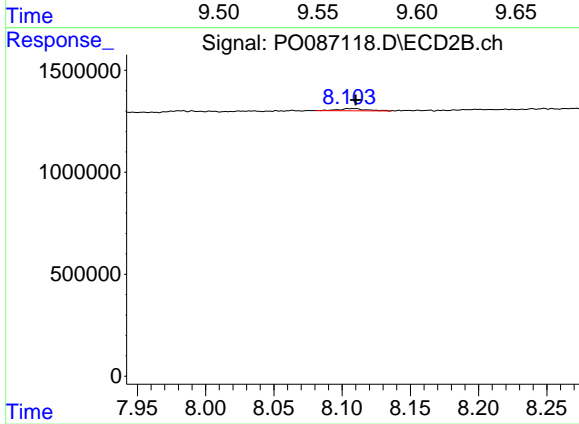
#39 AR-1262-4

R.T.: 7.612 min
 Delta R.T.: -0.003 min
 Response: 3326062
 Conc: 44.43 ng/ml



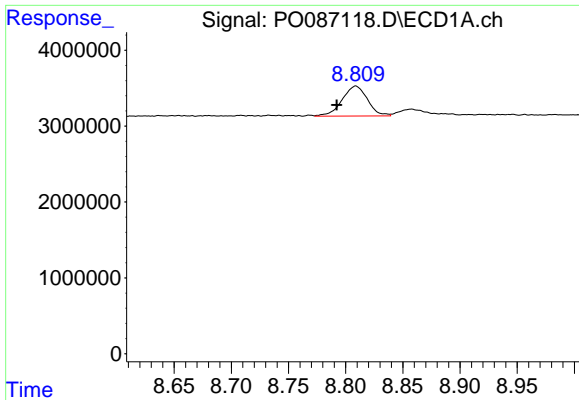
#40 AR-1262-5

R.T.: 9.567 min
 Delta R.T.: 0.000 min
 Response: 479506
 Conc: 6.20 ng/ml



#40 AR-1262-5

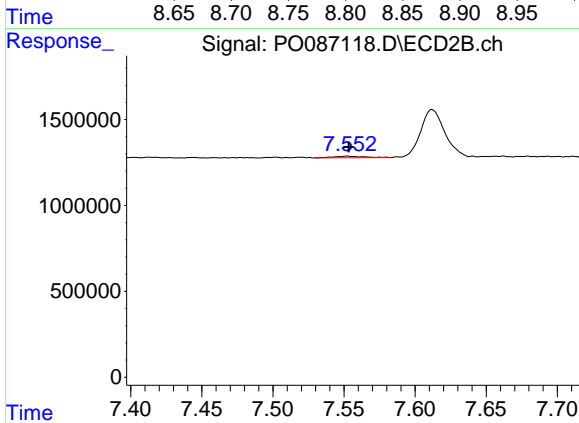
R.T.: 8.109 min
 Delta R.T.: -0.001 min
 Response: 151177
 Conc: 4.39 ng/ml



#41 AR-1268-1

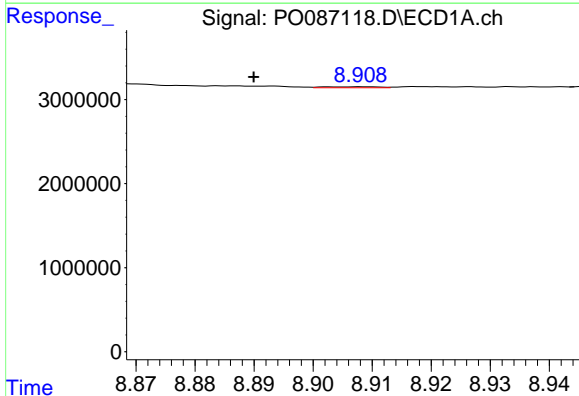
R.T.: 8.809 min
 Delta R.T.: 0.017 min
 Response: 6059436
 Conc: 23.57 ng/ml

Instrument :
 ECD_O
 ClientSampleId :



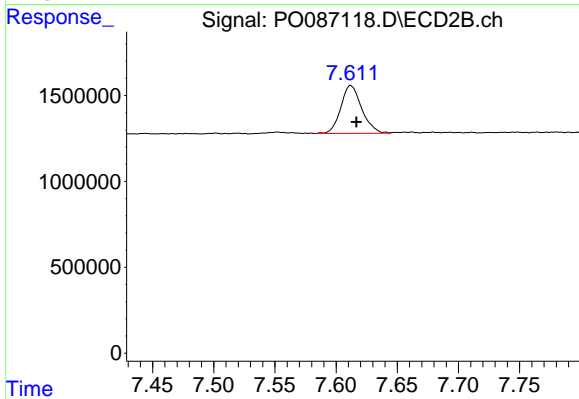
#41 AR-1268-1

R.T.: 7.552 min
 Delta R.T.: -0.001 min
 Response: 133371
 Conc: 1.12 ng/ml



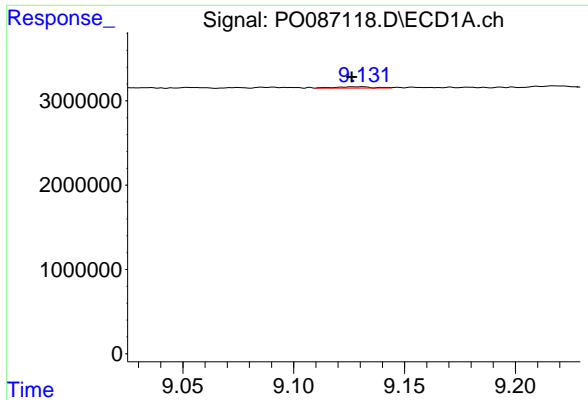
#42 AR-1268-2

R.T.: 8.909 min
 Delta R.T.: 0.019 min
 Response: 81560
 Conc: 0.34 ng/ml



#42 AR-1268-2

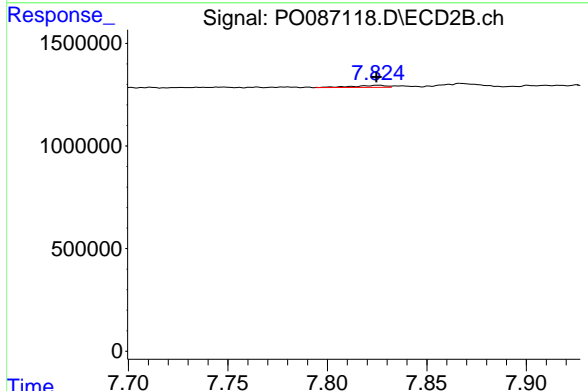
R.T.: 7.612 min
 Delta R.T.: -0.005 min
 Response: 3326062
 Conc: 30.55 ng/ml



#43 AR-1268-3

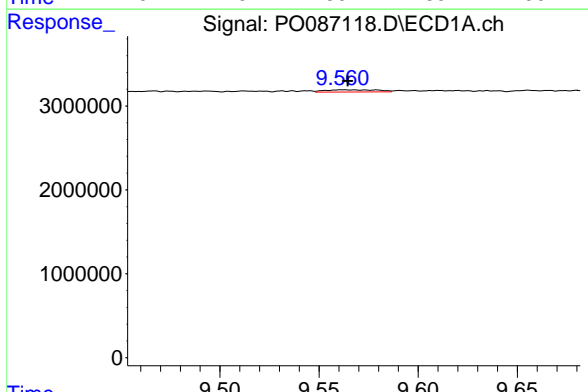
R.T.: 9.131 min
 Delta R.T.: 0.005 min
 Response: 189230
 Conc: 0.95 ng/ml

Instrument :
 ECD_O
 ClientSampleId :



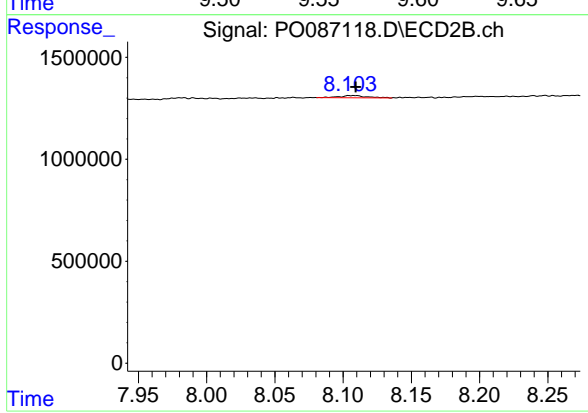
#43 AR-1268-3

R.T.: 7.826 min
 Delta R.T.: 0.000 min
 Response: 118263
 Conc: 1.29 ng/ml



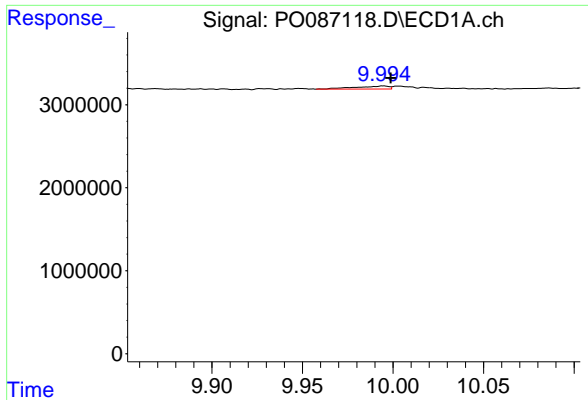
#44 AR-1268-4

R.T.: 9.567 min
 Delta R.T.: 0.003 min
 Response: 479506
 Conc: 5.32 ng/ml



#44 AR-1268-4

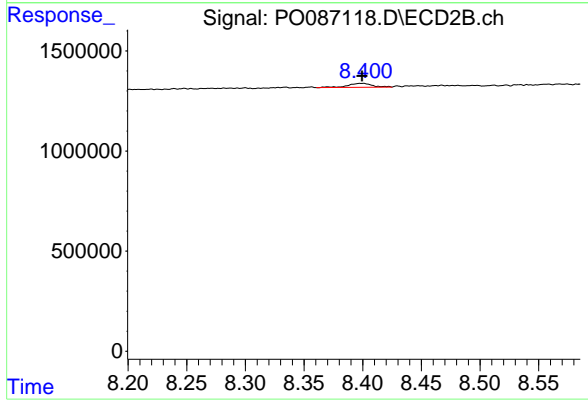
R.T.: 8.109 min
 Delta R.T.: 0.000 min
 Response: 151177
 Conc: 3.80 ng/ml



#45 AR-1268-5

R.T.: 9.995 min
 Delta R.T.: -0.004 min
 Response: 472504
 Conc: 0.74 ng/ml

Instrument :
 ECD_O
 ClientSampleId :



#45 AR-1268-5

R.T.: 8.399 min
 Delta R.T.: 0.000 min
 Response: 283551
 Conc: 0.99 ng/ml