

Data Path : Z:\pestpcbsrv\HPCHEM1\ECD_0\Data\P0061323\
 Data File : P0095633.D
 Signal(s) : Signal #1: ECD1A.ch Signal #2: ECD2B.ch
 Acq On : 13 Jun 2023 10:35
 Operator : YP/AJ
 Sample : AR1248CCC500
 Misc :
 ALS Vial : 5 Sample Multiplier: 1

Instrument :
 ECD_0
 ClientSampleId :
 AR1248CCC500

Integration File signal 1: autoint1.e
 Integration File signal 2: autoint2.e
 Quant Time: Jun 14 02:03:51 2023
 Quant Method : Z:\pestpcbsrv\HPCHEM1\ECD_0\methods\P0060923.M
 Quant Title : GC EXTRACTABLES
 QLast Update : Sat Jun 10 06:51:01 2023
 Response via : Initial Calibration
 Integrator: ChemStation

Volume Inj. : 2 µl
 Signal #1 Phase : ZB-MR1 Signal #2 Phase: ZB-MR2
 Signal #1 Info : 30Mx0.32mmx 0.50µ Signal #2 Info : 30M x 0.32mm x 0.25µm

Compound	RT#1	RT#2	Resp#1	Resp#2	ng/ml	ng/ml

System Monitoring Compounds						
1) SA Tetrachlo...	4.406	3.623	172.3E6	74172944	40.192	40.801
2) SA Decachlor...	10.241	8.677	122.8E6	56095908	49.259	50.369
Target Compounds						
21) L5 AR-1248-1	5.587	4.716	32614925	13272664	483.965	516.534
22) L5 AR-1248-2	5.864	4.955	50405357	21283299	465.654	485.903
23) L5 AR-1248-3	6.069	4.997	53027908	22268083	479.683	493.387
24) L5 AR-1248-4	6.477	5.170	53844868	25065912	490.131	493.729
25) L5 AR-1248-5	6.516	5.566	54619093	20149577	485.823	523.226

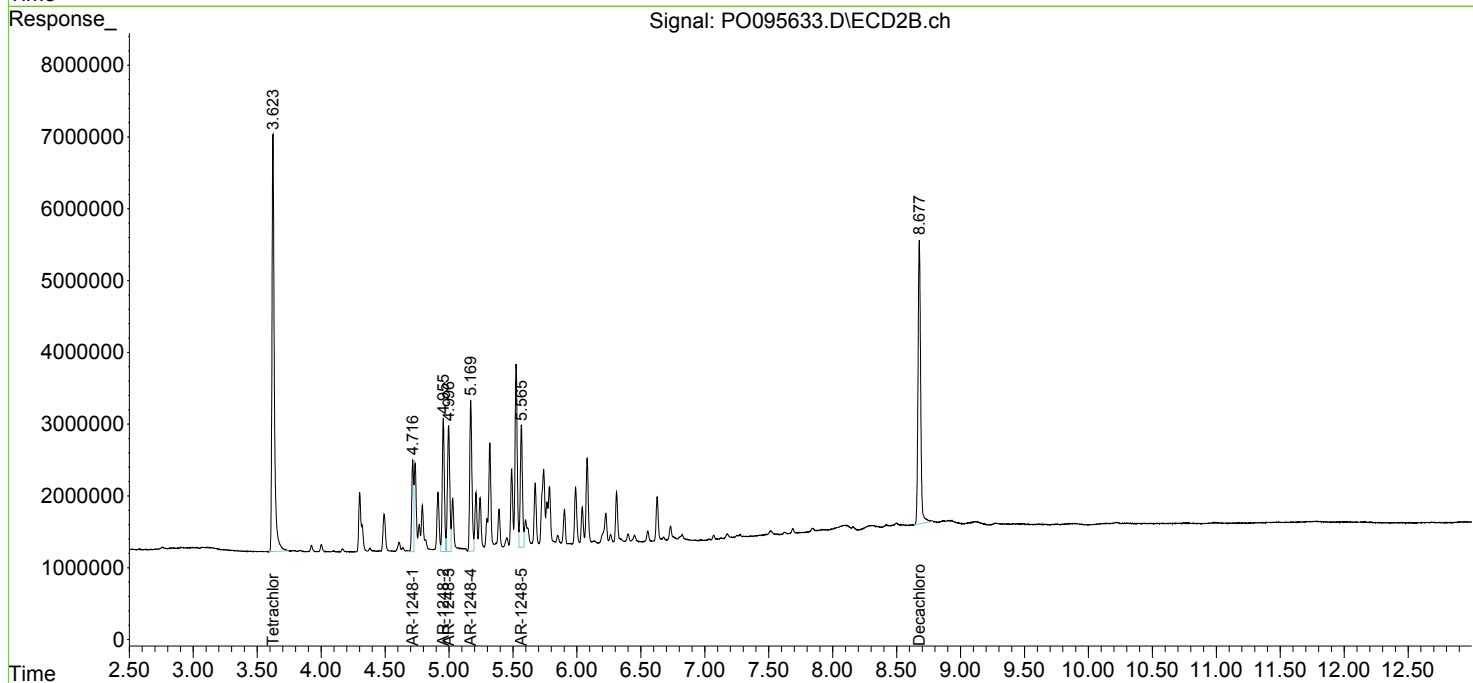
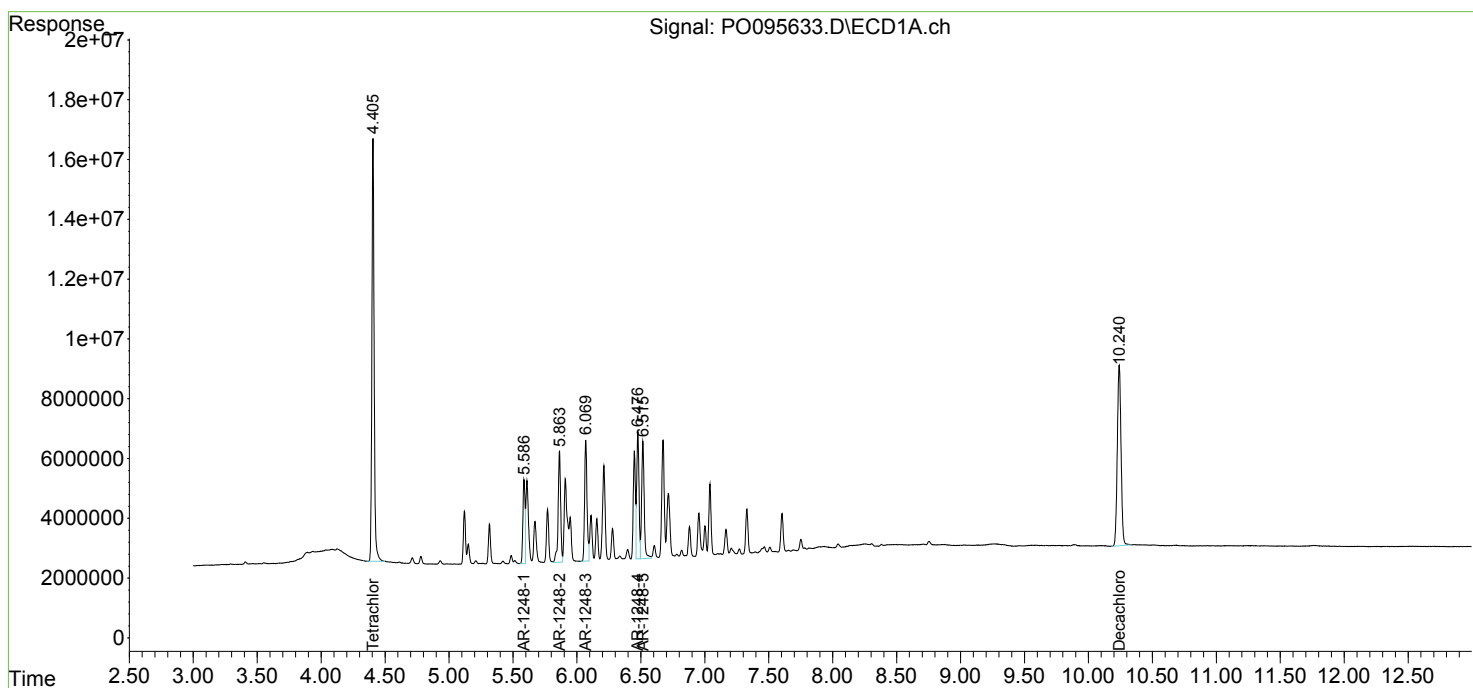
(f)=RT Delta > 1/2 Window (#)=Amounts differ by > 25% (m)=manual int.

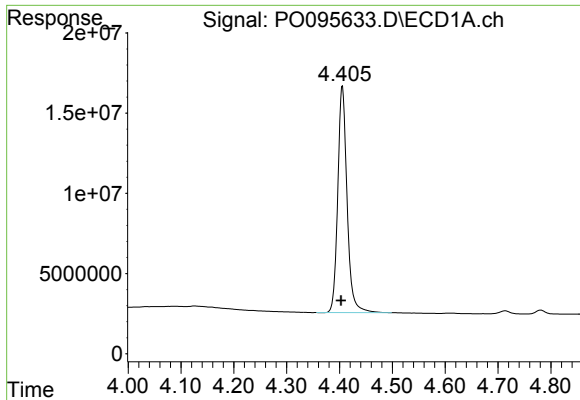
Data Path : Z:\pestpcbsrv\HPCHEM1\ECD_O\Data\P0061323\
 Data File : P0095633.D
 Signal(s) : Signal #1: ECD1A.ch Signal #2: ECD2B.ch
 Acq On : 13 Jun 2023 10:35
 Operator : YP/AJ
 Sample : AR1248CCC500
 Misc :
 ALS Vial : 5 Sample Multiplier: 1

Instrument :
 ECD_O
 ClientSampleId :
 AR1248CCC500

Integration File signal 1: autoint1.e
 Integration File signal 2: autoint2.e
 Quant Time: Jun 14 02:03:51 2023
 Quant Method : Z:\pestpcbsrv\HPCHEM1\ECD_O\methods\P0060923.M
 Quant Title : GC EXTRACTABLES
 QLast Update : Sat Jun 10 06:51:01 2023
 Response via : Initial Calibration
 Integrator: ChemStation

Volume Inj. : 2 µl
 Signal #1 Phase : ZB-MR1 Signal #2 Phase: ZB-MR2
 Signal #1 Info : 30Mx0.32mmx 0.50µ Signal #2 Info : 30M x 0.32mm x 0.25µm

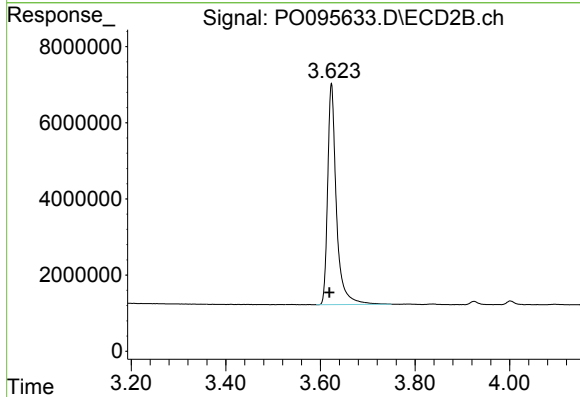




#1 Tetrachloro-m-xylene

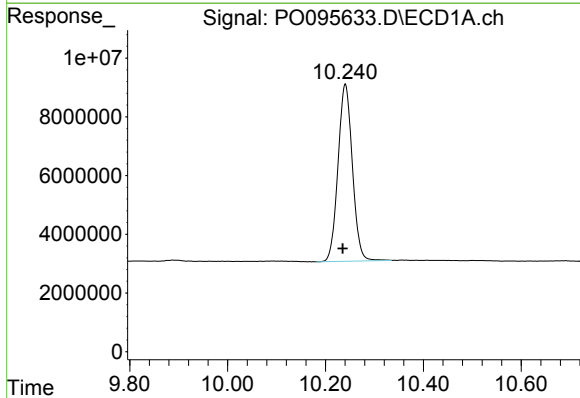
R.T.: 4.406 min
 Delta R.T.: 0.003 min
 Response: 172271020
 Conc: 40.19 ng/ml

Instrument :
 ECD_O
 ClientSampleId :
 AR1248CCC500



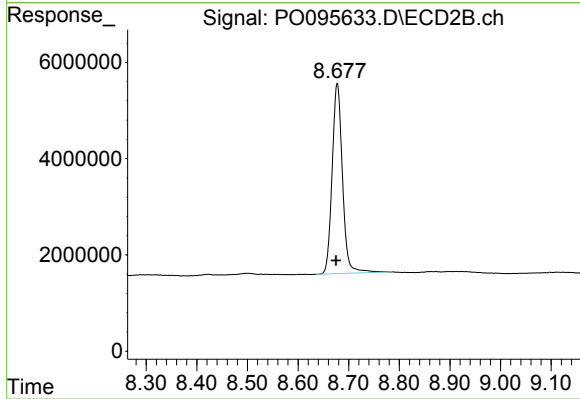
#1 Tetrachloro-m-xylene

R.T.: 3.623 min
 Delta R.T.: 0.004 min
 Response: 74172944
 Conc: 40.80 ng/ml



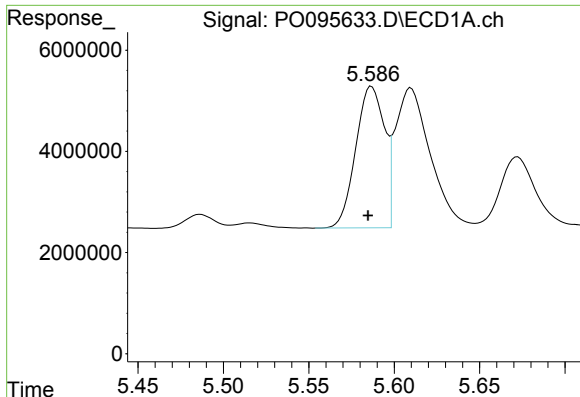
#2 Decachlorobiphenyl

R.T.: 10.241 min
 Delta R.T.: 0.005 min
 Response: 122766655
 Conc: 49.26 ng/ml



#2 Decachlorobiphenyl

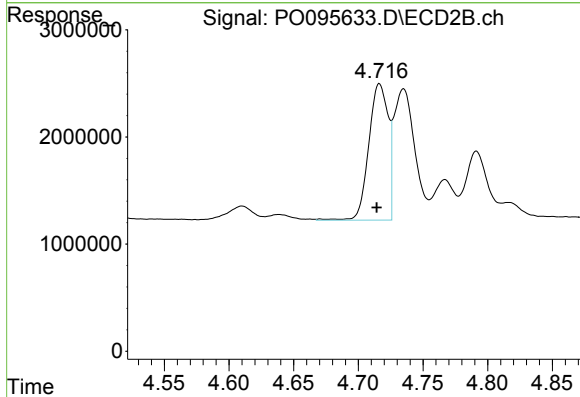
R.T.: 8.677 min
 Delta R.T.: 0.002 min
 Response: 56095908
 Conc: 50.37 ng/ml



#21 AR-1248-1

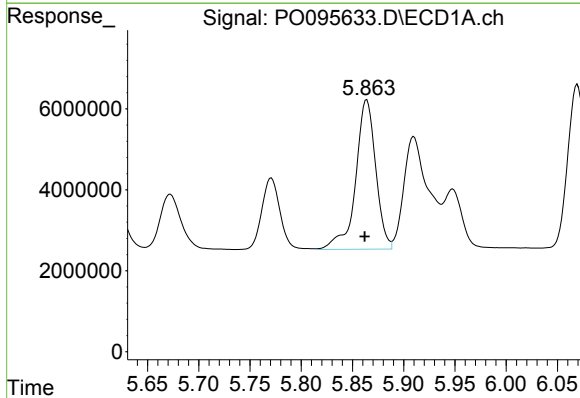
R.T.: 5.587 min
 Delta R.T.: 0.002 min
 Response: 32614925
 Conc: 483.96 ng/ml

Instrument :
 ECD_O
 ClientSampleId :
 AR1248CCC500



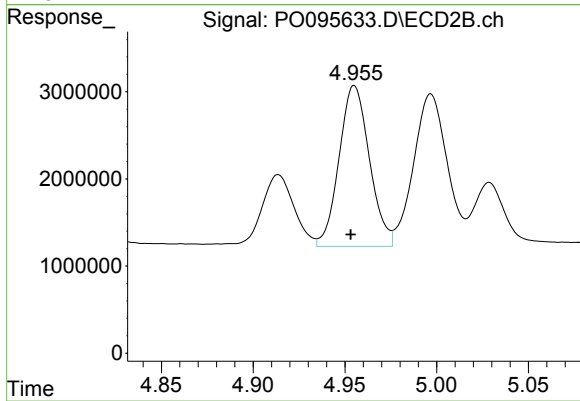
#21 AR-1248-1

R.T.: 4.716 min
 Delta R.T.: 0.002 min
 Response: 13272664
 Conc: 516.53 ng/ml



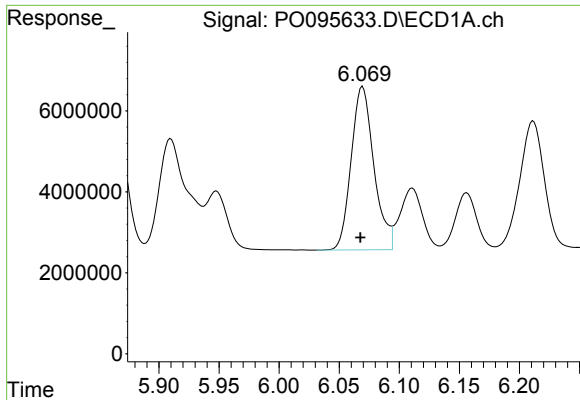
#22 AR-1248-2

R.T.: 5.864 min
 Delta R.T.: 0.002 min
 Response: 50405357
 Conc: 465.65 ng/ml



#22 AR-1248-2

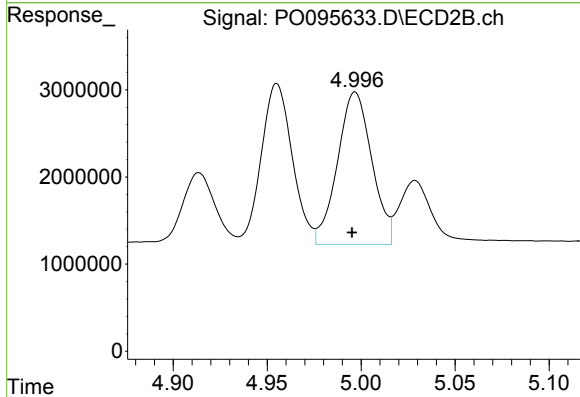
R.T.: 4.955 min
 Delta R.T.: 0.002 min
 Response: 21283299
 Conc: 485.90 ng/ml



#23 AR-1248-3

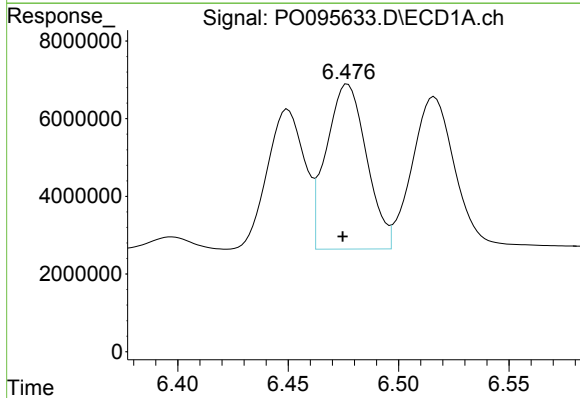
R.T.: 6.069 min
 Delta R.T.: 0.002 min
 Response: 53027908
 Conc: 479.68 ng/ml

Instrument :
 ECD_O
 ClientSampleId :
 AR1248CCC500



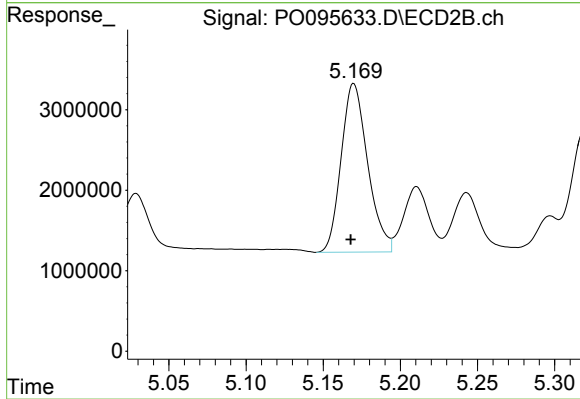
#23 AR-1248-3

R.T.: 4.997 min
 Delta R.T.: 0.002 min
 Response: 22268083
 Conc: 493.39 ng/ml



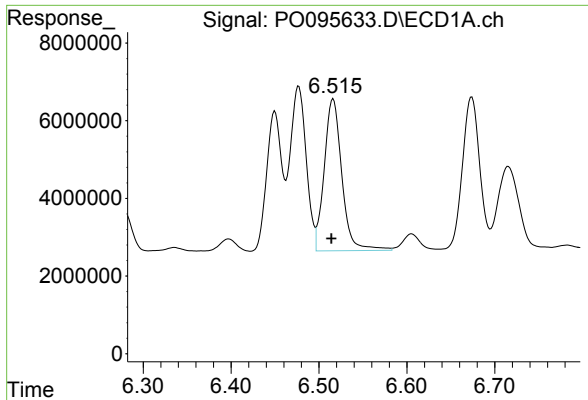
#24 AR-1248-4

R.T.: 6.477 min
 Delta R.T.: 0.002 min
 Response: 53844868
 Conc: 490.13 ng/ml



#24 AR-1248-4

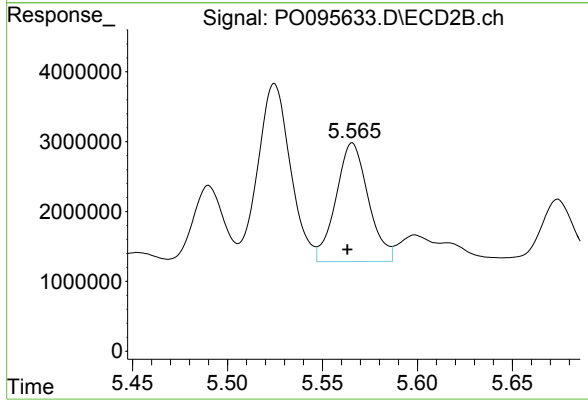
R.T.: 5.170 min
 Delta R.T.: 0.002 min
 Response: 25065912
 Conc: 493.73 ng/ml



#25 AR-1248-5

R.T.: 6.516 min
Delta R.T.: 0.002 min
Response: 54619093
Conc: 485.82 ng/ml

Instrument :
ECD_O
ClientSampleId :
AR1248CCC500



#25 AR-1248-5

R.T.: 5.566 min
Delta R.T.: 0.003 min
Response: 20149577
Conc: 523.23 ng/ml