

Data Path : Z:\pestpcbsrv\HPCHEM1\ECD_0\Data\P0061323\
 Data File : P0095635.D
 Signal(s) : Signal #1: ECD1A.ch Signal #2: ECD2B.ch
 Acq On : 13 Jun 2023 11:14
 Operator : YP/AJ
 Sample : I.BLK
 Misc :
 ALS Vial : 2 Sample Multiplier: 1

Instrument :
 ECD_0
 ClientSampleId :
 I.BLK

Integration File signal 1: autoint1.e
 Integration File signal 2: autoint2.e
 Quant Time: Jun 14 02:05:40 2023
 Quant Method : Z:\pestpcbsrv\HPCHEM1\ECD_0\methods\P0060923.M
 Quant Title : GC EXTRACTABLES
 QLast Update : Sat Jun 10 06:51:01 2023
 Response via : Initial Calibration
 Integrator: ChemStation

Volume Inj. : 2 µl
 Signal #1 Phase : ZB-MR1 Signal #2 Phase: ZB-MR2
 Signal #1 Info : 30Mx0.32mmx 0.50µ Signal #2 Info : 30M x 0.32mm x 0.25µm

Compound	RT#1	RT#2	Resp#1	Resp#2	ng/ml	ng/ml

System Monitoring Compounds						
1) SA Tetrachlo...	4.411	3.623	72277023	29903919	16.863	16.449
2) SA Decachlor...	10.249	8.679	55474549	25671295	22.259	23.050

Target Compounds

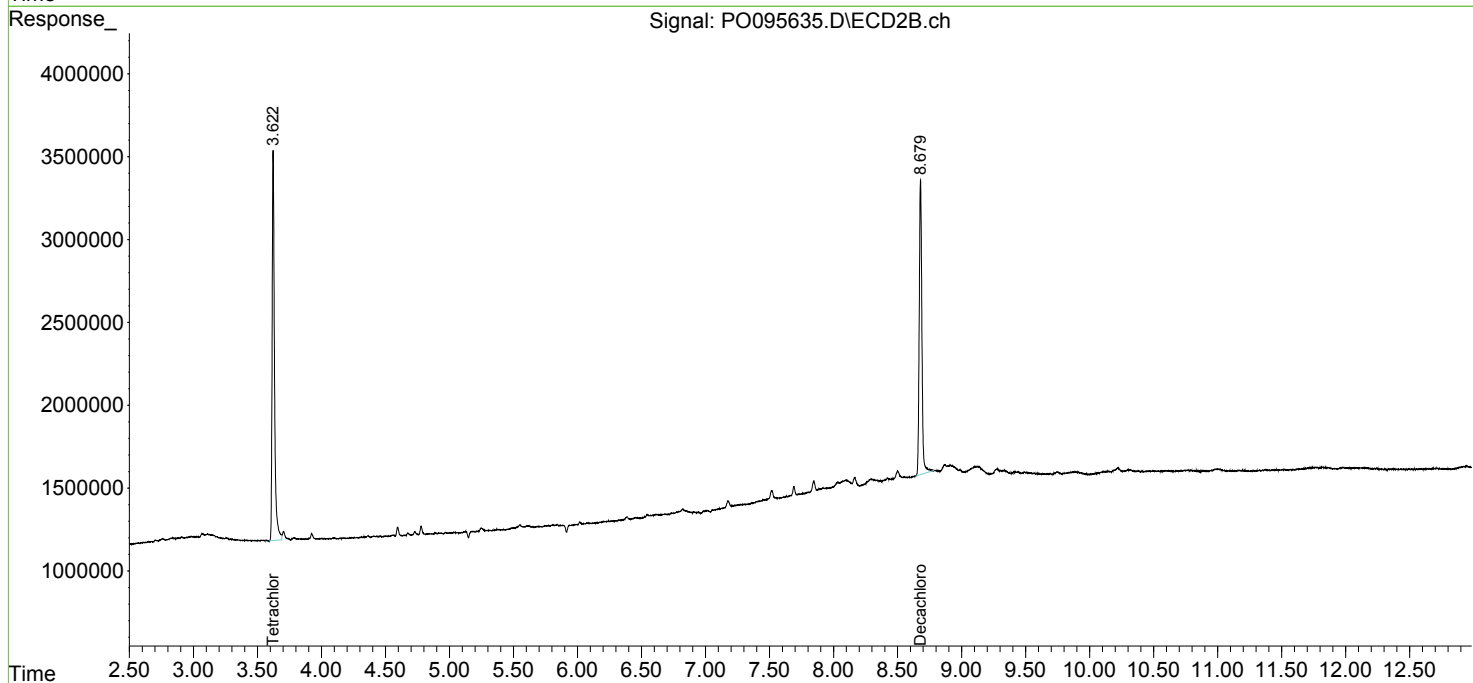
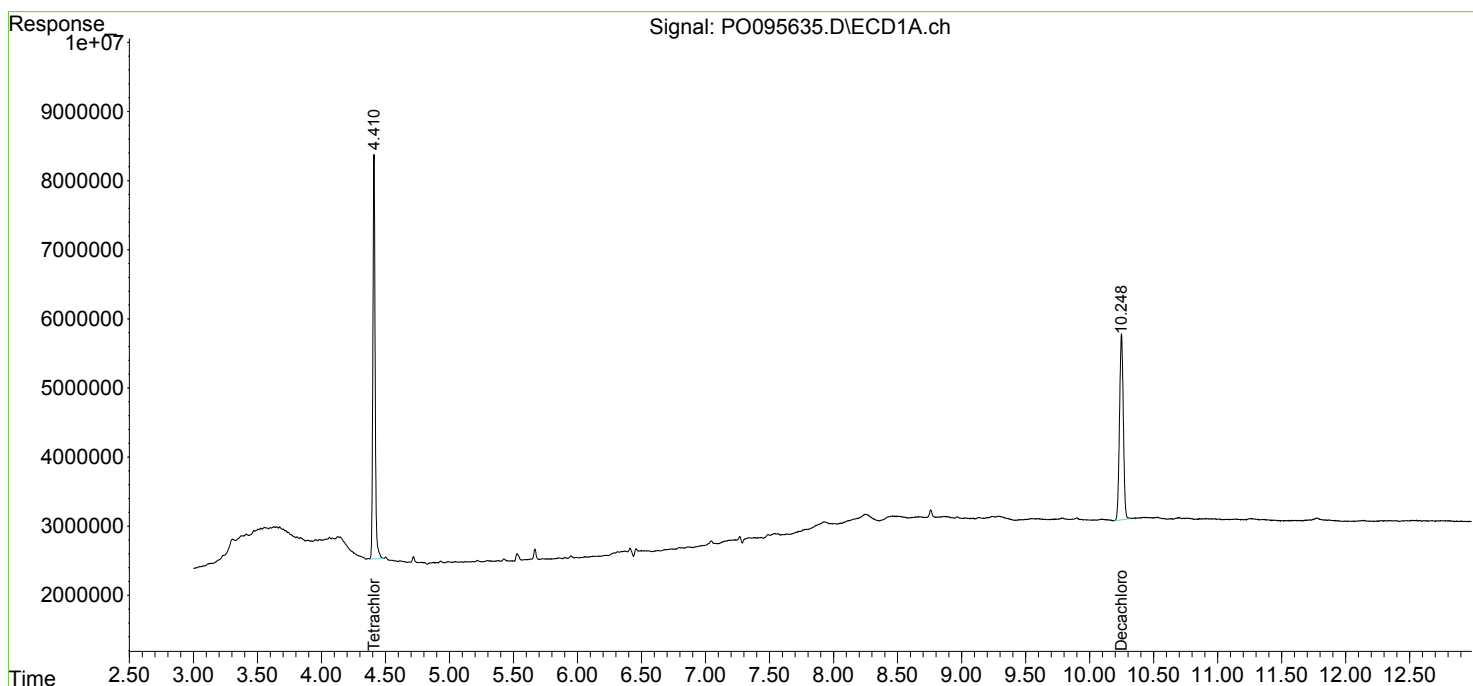
(f)=RT Delta > 1/2 Window (#)=Amounts differ by > 25% (m)=manual int.

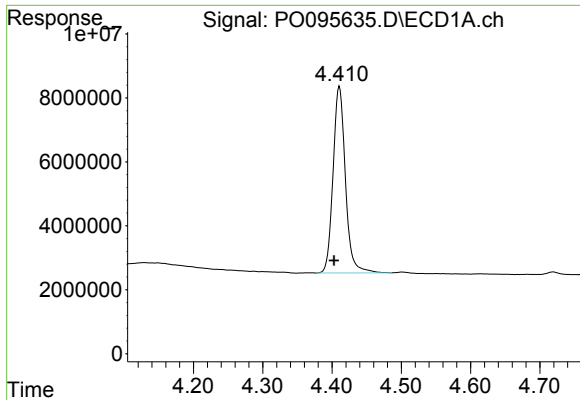
Data Path : Z:\pestpcbsrv\HPCHEM1\ECD_O\Data\P0061323\
 Data File : P0095635.D
 Signal(s) : Signal #1: ECD1A.ch Signal #2: ECD2B.ch
 Acq On : 13 Jun 2023 11:14
 Operator : YP/AJ
 Sample : I.BLK
 Misc :
 ALS Vial : 2 Sample Multiplier: 1

Instrument :
 ECD_O
 ClientSampleId :
 I.BLK

Integration File signal 1: autoint1.e
 Integration File signal 2: autoint2.e
 Quant Time: Jun 14 02:05:40 2023
 Quant Method : Z:\pestpcbsrv\HPCHEM1\ECD_O\methods\P0060923.M
 Quant Title : GC EXTRACTABLES
 QLast Update : Sat Jun 10 06:51:01 2023
 Response via : Initial Calibration
 Integrator: ChemStation

Volume Inj. : 2 µl
 Signal #1 Phase : ZB-MR1 Signal #2 Phase: ZB-MR2
 Signal #1 Info : 30Mx0.32mmx 0.50µ Signal #2 Info : 30M x 0.32mm x 0.25µm

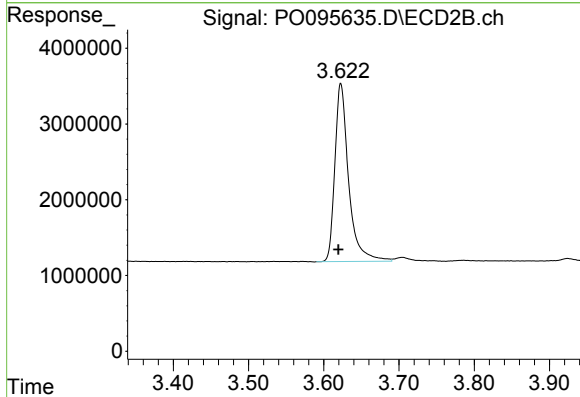




#1 Tetrachloro-m-xylene

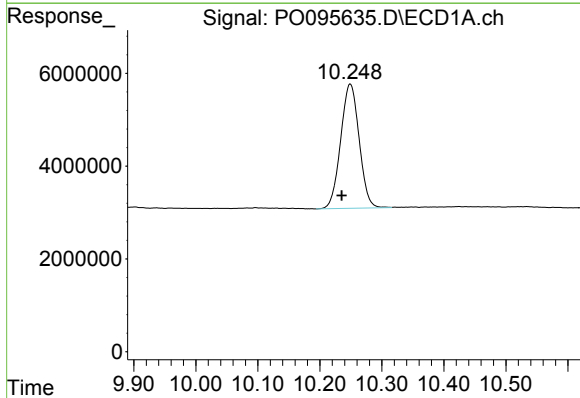
R.T.: 4.411 min
 Delta R.T.: 0.008 min
 Response: 72277023
 Conc: 16.86 ng/ml

Instrument :
 ECD_O
 ClientSampleId :
 I.BLK



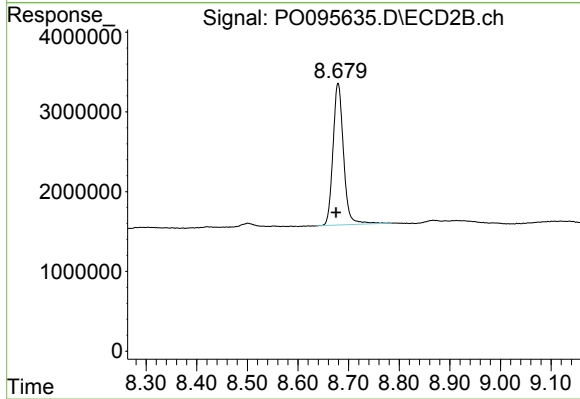
#1 Tetrachloro-m-xylene

R.T.: 3.623 min
 Delta R.T.: 0.003 min
 Response: 29903919
 Conc: 16.45 ng/ml



#2 Decachlorobiphenyl

R.T.: 10.249 min
 Delta R.T.: 0.014 min
 Response: 55474549
 Conc: 22.26 ng/ml



#2 Decachlorobiphenyl

R.T.: 8.679 min
 Delta R.T.: 0.004 min
 Response: 25671295
 Conc: 23.05 ng/ml