

Data Path : Z:\pestpcbsrv\HPCHEM1\ECD_0\Data\P0061323\
 Data File : P0095641.D
 Signal(s) : Signal #1: ECD1A.ch Signal #2: ECD2B.ch
 Acq On : 13 Jun 2023 17:31
 Operator : YP/AJ
 Sample : 03162-04 10X
 Misc :
 ALS Vial : 12 Sample Multiplier: 1

Instrument :
 ECD_0
 ClientSampleId :
 BC107266-1-2

Integration File signal 1: autoint1.e
 Integration File signal 2: autoint2.e
 Quant Time: Jun 14 02:09:28 2023
 Quant Method : Z:\pestpcbsrv\HPCHEM1\ECD_0\methods\P0060923.M
 Quant Title : GC EXTRACTABLES
 QLast Update : Sat Jun 10 06:51:01 2023
 Response via : Initial Calibration
 Integrator: ChemStation

Volume Inj. : 2 µl
 Signal #1 Phase : ZB-MR1 Signal #2 Phase: ZB-MR2
 Signal #1 Info : 30Mx0.32mmx 0.50µ Signal #2 Info : 30M x 0.32mm x 0.25µm

Compound	RT#1	RT#2	Resp#1	Resp#2	ng/ml	ng/ml

System Monitoring Compounds						
1) SA Tetrachlo...	4.403	3.622	9488327	2587477	2.214	1.423 #
2) SA Decachlor...	10.240	8.676	5800545	2788056	2.327	2.503

Target Compounds

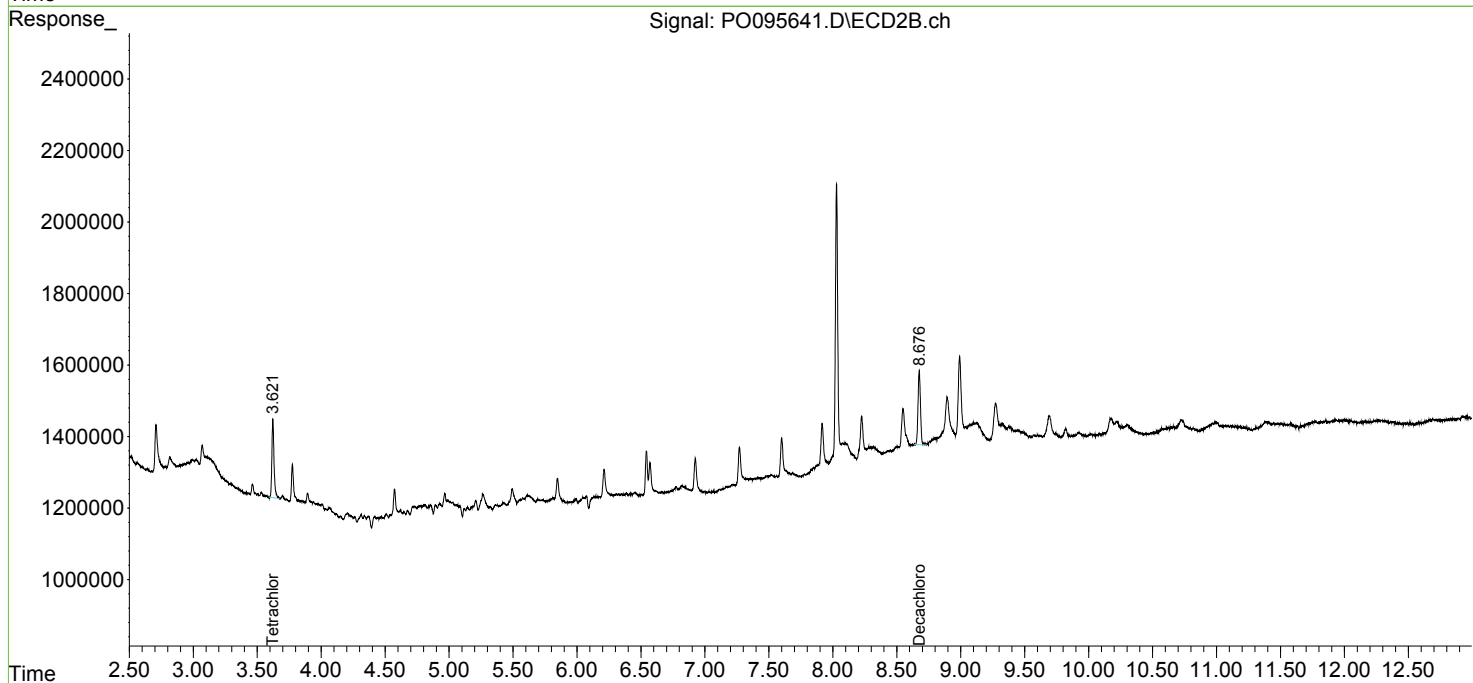
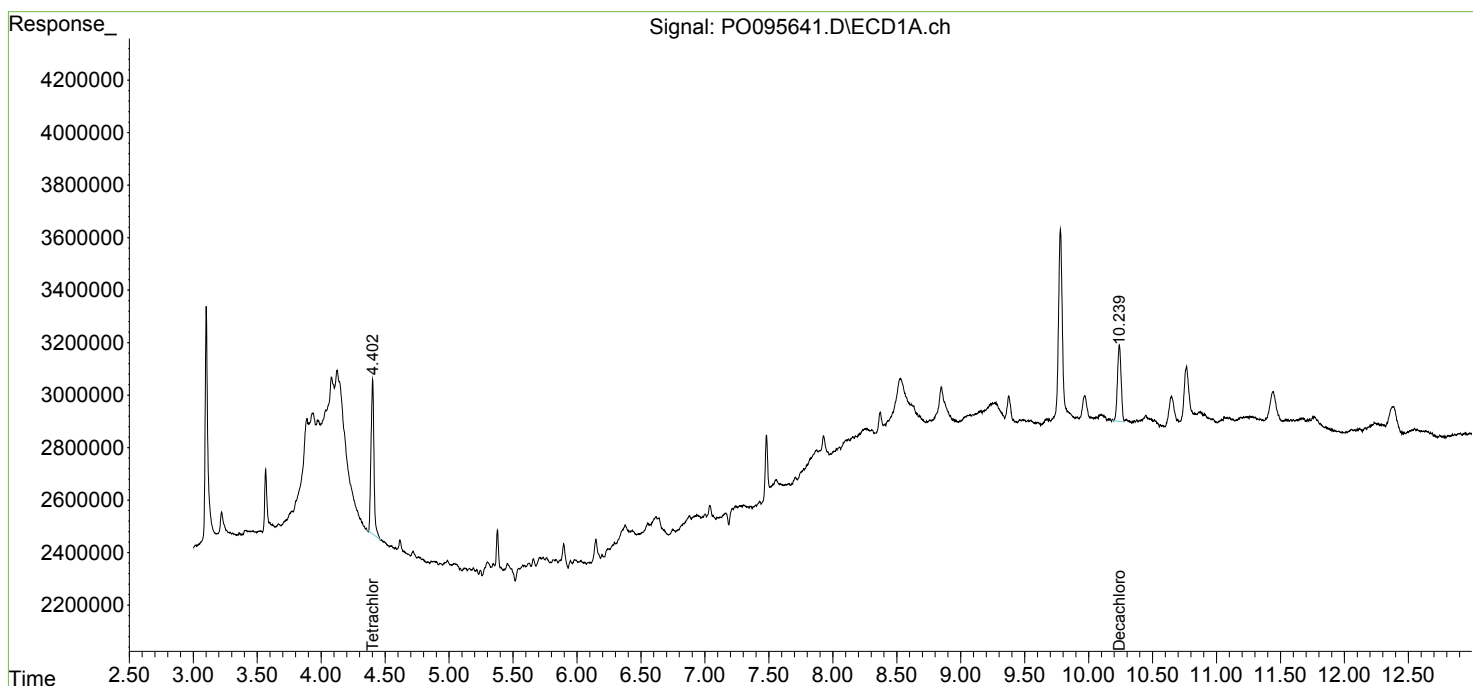
(f)=RT Delta > 1/2 Window (#)=Amounts differ by > 25% (m)=manual int.

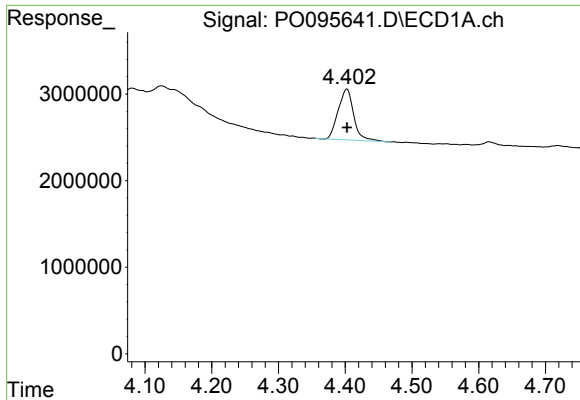
Data Path : Z:\pestpcbsrv\HPCHEM1\ECD_O\Data\P0061323\
 Data File : P0095641.D
 Signal(s) : Signal #1: ECD1A.ch Signal #2: ECD2B.ch
 Acq On : 13 Jun 2023 17:31
 Operator : YP/AJ
 Sample : 03162-04 10X
 Misc :
 ALS Vial : 12 Sample Multiplier: 1

Instrument :
 ECD_O
 ClientSampleId :
 BC107266-1-2

Integration File signal 1: autoint1.e
 Integration File signal 2: autoint2.e
 Quant Time: Jun 14 02:09:28 2023
 Quant Method : Z:\pestpcbsrv\HPCHEM1\ECD_O\methods\P0060923.M
 Quant Title : GC EXTRACTABLES
 QLast Update : Sat Jun 10 06:51:01 2023
 Response via : Initial Calibration
 Integrator: ChemStation

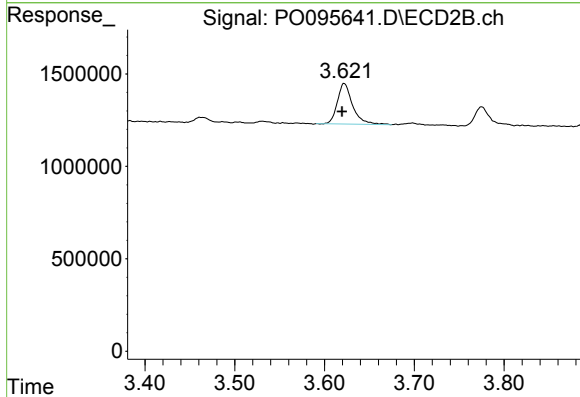
Volume Inj. : 2 µl
 Signal #1 Phase : ZB-MR1 Signal #2 Phase: ZB-MR2
 Signal #1 Info : 30Mx0.32mmx 0.50µ Signal #2 Info : 30M x 0.32mm x 0.25µm



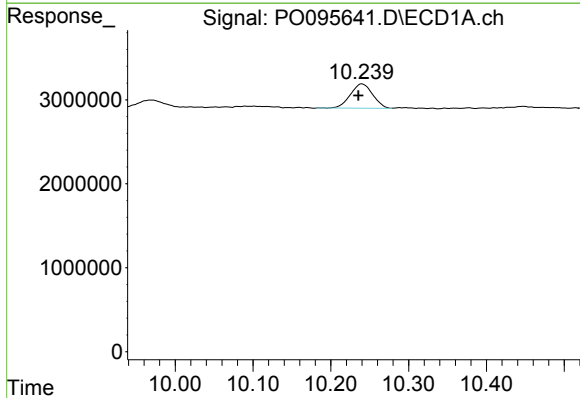


#1 Tetrachloro-m-xylene
 R.T.: 4.403 min
 Delta R.T.: 0.000 min
 Response: 9488327
 Conc: 2.21 ng/ml

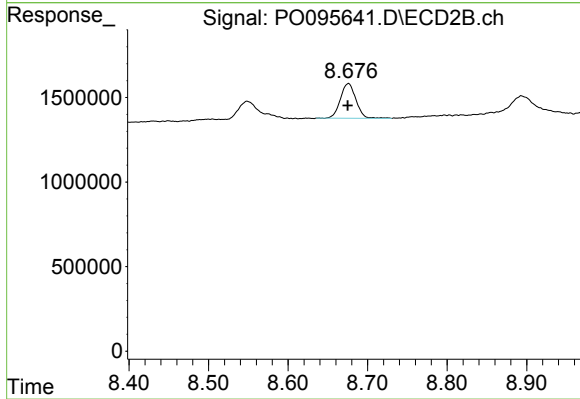
Instrument :
 ECD_O
 ClientSampleId :
 BC107266-1-2



#1 Tetrachloro-m-xylene
 R.T.: 3.622 min
 Delta R.T.: 0.003 min
 Response: 2587477
 Conc: 1.42 ng/ml



#2 Decachlorobiphenyl
 R.T.: 10.240 min
 Delta R.T.: 0.004 min
 Response: 5800545
 Conc: 2.33 ng/ml



#2 Decachlorobiphenyl
 R.T.: 8.676 min
 Delta R.T.: 0.000 min
 Response: 2788056
 Conc: 2.50 ng/ml