

Data Path : Z:\pestpcbsrv\HPCHEM1\ECD O\Data\PO061418\  
 Data File : PO045799.D  
 Signal(s) : Signal #1: ECD1A.CH Signal #2: ECD2B.CH  
 Acq On : 14 Jun 2018 23:56  
 Operator : SM/UA  
 Sample : J3488-01  
 Misc :  
 ALS Vial : 17 Sample Multiplier: 1

Instrument :  
 ECD\_O  
 ClientSampled :

Integration File signal 1: autoint1.e  
 Integration File signal 2: autoint2.e  
 Quant Time: Jun 15 01:13:44 2018  
 Quant Method : Z:\pestpcbsrv\HPCHEM1\ECD\_O\methods\PO061418.M  
 Quant Title : GC EXTRACTABLES  
 QLast Update : Wed Jun 13 03:54:48 2018  
 Response via : Initial Calibration  
 Integrator: ChemStation 6890 Scale Mode: Small noise peaks clipped

Volume Inj. : 2 ul  
 Signal #1 Phase : ZB-MR1 Signal #2 Phase: ZB-MR2  
 Signal #1 Info : 30Mx0.32mmx 0.50µ Signal #2 Info : 30M x 0.32mm x 0.25µm

Compound	RT#1	RT#2	Resp#1	Resp#2	ng/ml	ng/ml
-----						
System Monitoring Compounds						
1) SA Tetrachlo...	4.390	3.623	5064870	2614071	25.992	22.998
2) SA Decachlor...	10.052	8.604	1946404	932824	13.903	13.340
Target Compounds						
3) L1 AR-1016-1	5.281	4.476	151518	417468	29.926	123.896 #
4) L1 AR-1016-2	5.619	4.938	12296	244475	1.925	99.794 #
5) L1 AR-1016-3	5.708	4.988	72645	135560	13.781	42.370 #
6) L1 AR-1016-4	6.167	5.145	62355	49720	11.109	14.223 #
7) L1 AR-1016-5	6.394	5.501	355979	1278093	76.015	398.076 #
8) L2 AR-1221-1	4.549	3.854	10914	25955	3.787	14.586 #
9) L2 AR-1221-2	4.693	3.922	124504	220668	58.796	174.559 #
10) L2 AR-1221-3	4.753	3.999	38957	104495	5.935	25.599 #
11) L3 AR-1232-1	5.087	3.999	263260	104495	110.113	40.136 #
12) L3 AR-1232-2	5.544	4.739	42680	185814	12.885	67.209 #
13) L3 AR-1232-3	5.572	4.756	49943	454769	10.524	228.842 #
14) L3 AR-1232-4	5.619	4.904	12296	166423	4.046	111.372 #
15) L3 AR-1232-5	5.708	4.988	72645	135560	29.537	97.233 #
16) L4 AR-1242-1	5.087	4.502	263260	682527	65.248	261.792 #
17) L4 AR-1242-2	5.572	4.739	49943	185814	6.178	40.119 #
18) L4 AR-1242-3	5.708	4.904	72645	166423	17.180	66.856 #
19) L4 AR-1242-4	6.022	4.988	201811	135560	48.481	55.039 #
20) L4 AR-1242-5	6.167	5.145	62355	49720	13.183	18.699 #
21) L5 AR-1248-1	6.022	5.145	201811	49720	26.874	10.799 #
22) L5 AR-1248-2	6.167	5.306	62355	125922	9.369	30.465 #
23) L5 AR-1248-3	6.432	5.501	162004	1278093	19.037	203.309 #
24) L5 AR-1248-4	6.464	5.548	101994	622985	12.451	135.520 #
25) L5 AR-1248-5	6.676	6.048	328971	2273889	60.332	752.362 #
26) L6 AR-1254-1	6.613	5.501	458580	1278093	34.177	187.731 #
27) L6 AR-1254-2	6.879	5.647	1216667	1199158	149.529	197.560 #
28) L6 AR-1254-3	6.978	6.048	602018	2273889	42.272	239.958 #
29) L6 AR-1254-4	7.261	6.277	346474	1096256	33.896	184.341 #
30) L6 AR-1254-5	7.530	6.590	203485	697331	27.075	173.455 #
31) L7 AR-1260-1	7.142	6.181	377165	1244061	37.797	194.962 #
32) L7 AR-1260-2	7.395	6.366	569131	1043739	49.588	138.953 #
33) L7 AR-1260-3	7.679	6.767	672440	86323	51.420	15.840 #
34) L7 AR-1260-4	8.290	7.227	225050	470759	12.962	43.452 #
35) L7 AR-1260-5	8.608	7.580	147944	455506	13.651	60.326 #
36) L8 AR-1262-1	7.142	6.366	377165	1043739	41.641	166.190 #
37) L8 AR-1262-2	7.395	6.519	569131	745787	55.105	123.278 #
38) L8 AR-1262-3	7.679	6.767	672440	86323	71.942	10.952 #

Data Path : Z:\pestpcbsrv\HPCHEM1\ECD O\Data\PO061418\  
 Data File : PO045799.D  
 Signal(s) : Signal #1: ECD1A.CH Signal #2: ECD2B.CH  
 Acq On : 14 Jun 2018 23:56  
 Operator : SM/UA  
 Sample : J3488-01  
 Misc :  
 ALS Vial : 17 Sample Multiplier: 1

Instrument :  
 ECD\_O  
 ClientSampleId :

Integration File signal 1: autoint1.e  
 Integration File signal 2: autoint2.e  
 Quant Time: Jun 15 01:13:44 2018  
 Quant Method : Z:\pestpcbsrv\HPCHEM1\ECD\_O\methods\PO061418.M  
 Quant Title : GC EXTRACTABLES  
 QLast Update : Wed Jun 13 03:54:48 2018  
 Response via : Initial Calibration  
 Integrator: ChemStation 6890 Scale Mode: Small noise peaks clipped

Volume Inj. : 2 µl  
 Signal #1 Phase : ZB-MR1 Signal #2 Phase: ZB-MR2  
 Signal #1 Info : 30Mx0.32mmx 0.50µ Signal #2 Info : 30M x 0.32mm x 0.25µm

	Compound	RT#1	RT#2	Resp#1	Resp#2	nq/ml	nq/ml
39)	L8 AR-1262-4	7.971	6.995	396000	142246	30.875	20.357 #
40)	L8 AR-1262-5	8.290	7.227	225050	470759	9.841	37.833 #
41)	L9 AR-1268-1	8.608	7.511	147944	537015	6.491	45.791 #
42)	L9 AR-1268-2	8.683	7.580	125816	455506	6.122	43.661 #
43)	L9 AR-1268-3	8.908	7.785	88066	656374	5.001	75.438 #
44)	L9 AR-1268-4	9.320	8.044	73872	111103	9.831	29.018 #
45)	L9 AR-1268-5	9.722	8.353	152760	170094	2.918	7.559 #

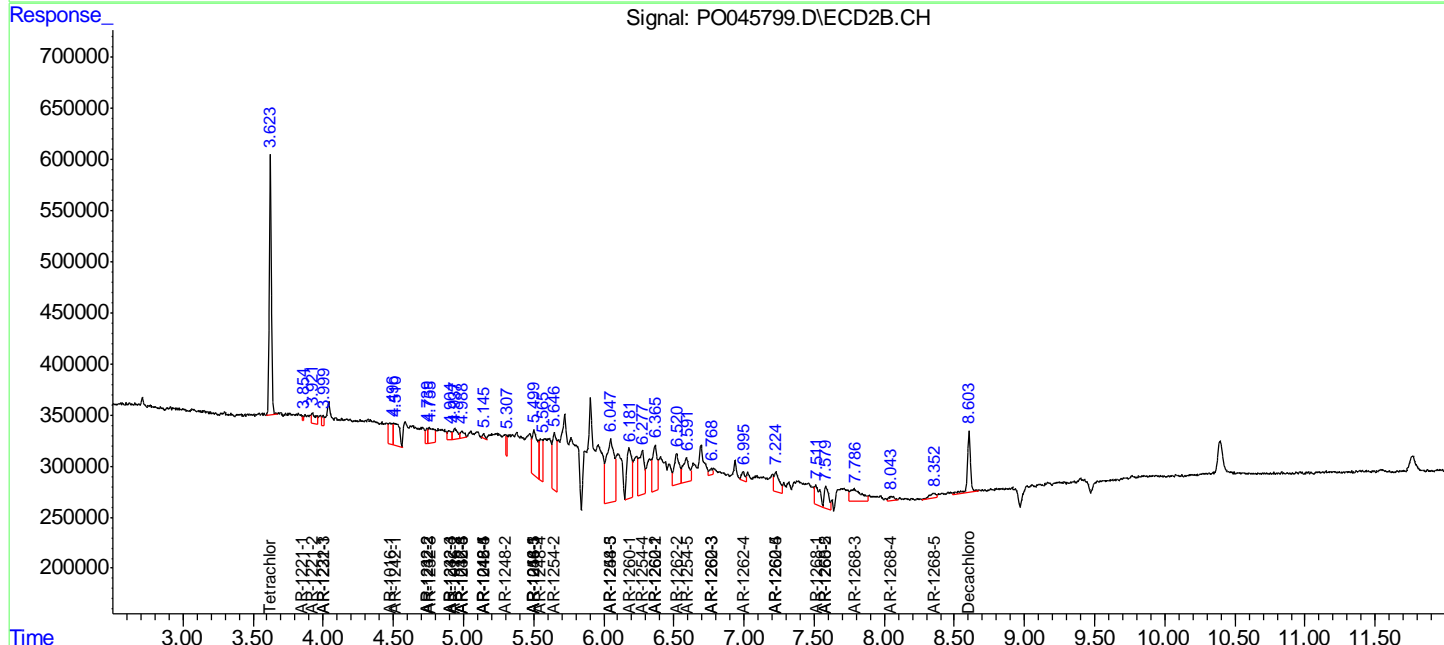
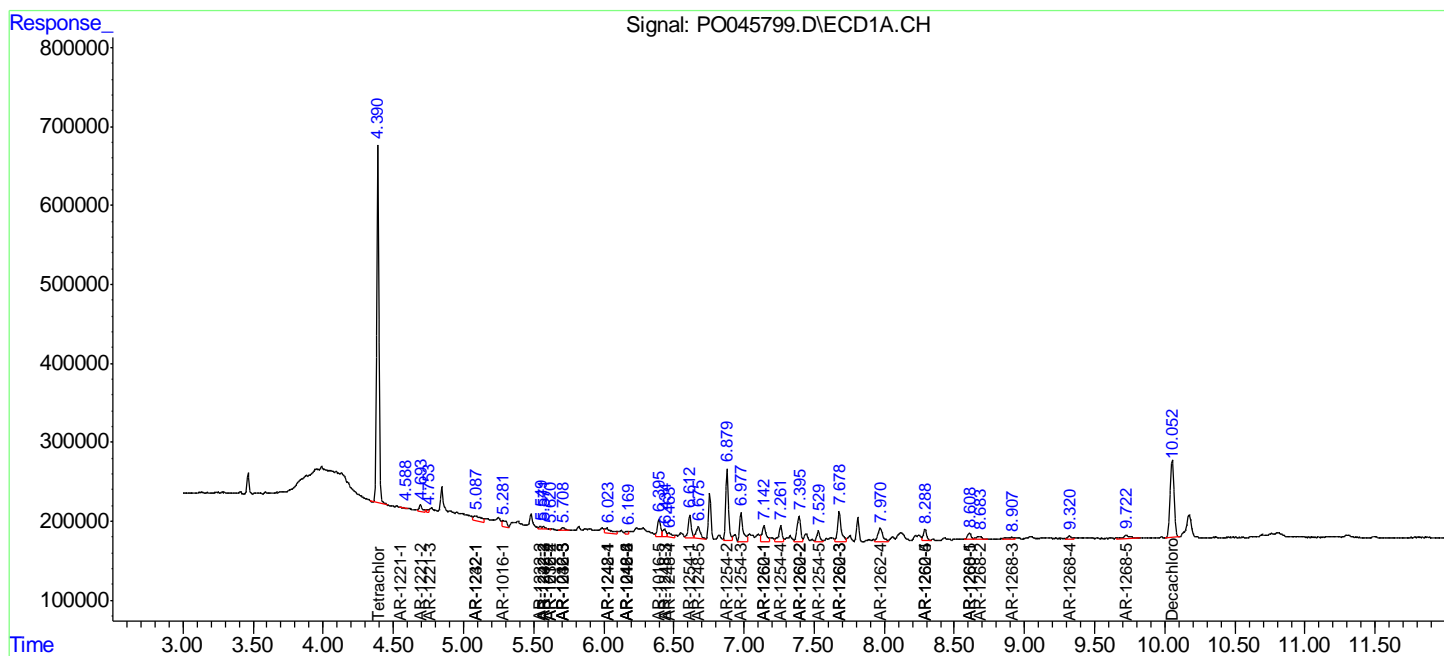
(f)=RT Delta > 1/2 Window (#)=Amounts differ by > 25% (m)=manual int.

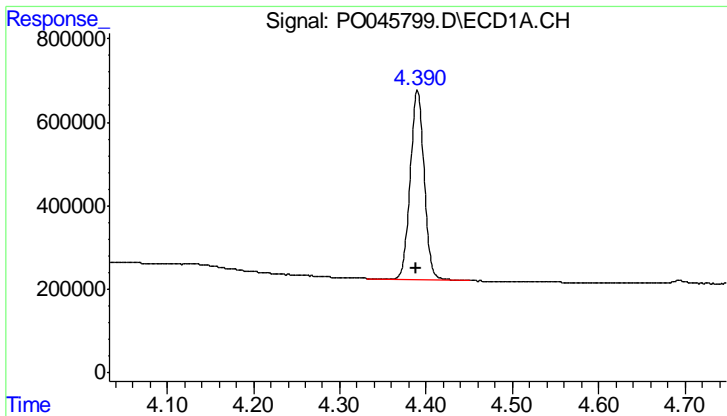
Data Path : Z:\pestpcbsrv\HPCHEM1\ECD O\Data\PO061418\  
 Data File : PO045799.D  
 Signal(s) : Signal #1: ECD1A.CH Signal #2: ECD2B.CH  
 Acq On : 14 Jun 2018 23:56  
 Operator : SM/UA  
 Sample : J3488-01  
 Misc :  
 ALS Vial : 17 Sample Multiplier: 1

Instrument :  
 ECD\_O  
 ClientSampled :

Integration File signal 1: autoint1.e  
 Integration File signal 2: autoint2.e  
 Quant Time: Jun 15 01:13:44 2018  
 Quant Method : Z:\pestpcbsrv\HPCHEM1\ECD\_O\methods\PO061418.M  
 Quant Title : GC EXTRACTABLES  
 QLast Update : Wed Jun 13 03:54:48 2018  
 Response via : Initial Calibration  
 Integrator: ChemStation 6890 Scale Mode: Small noise peaks clipped

Volume Inj. : 2 µl  
 Signal #1 Phase : ZB-MR1 Signal #2 Phase: ZB-MR2  
 Signal #1 Info : 30Mx0.32mmx 0.50µ Signal #2 Info : 30M x 0.32mm x 0.25µm

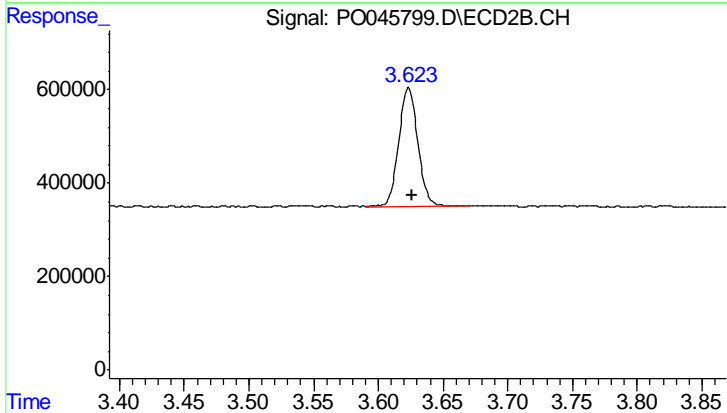




#1 Tetrachloro-m-xylene

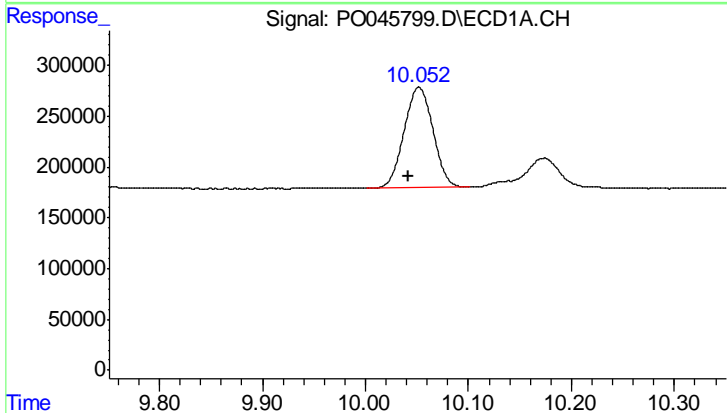
R.T.: 4.390 min  
 Delta R.T.: 0.002 min  
 Response: 5064870  
 Conc: 25.99 ng/ml

Instrument :  
 ECD\_O  
 ClientSampled :



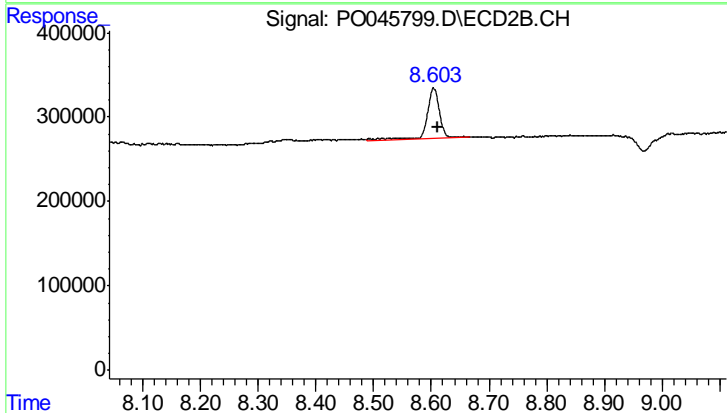
#1 Tetrachloro-m-xylene

R.T.: 3.623 min  
 Delta R.T.: -0.002 min  
 Response: 2614071  
 Conc: 23.00 ng/ml



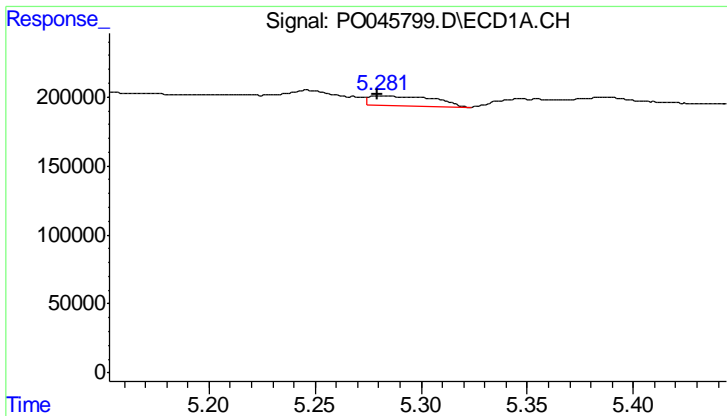
#2 Decachlorobiphenyl

R.T.: 10.052 min  
 Delta R.T.: 0.010 min  
 Response: 1946404  
 Conc: 13.90 ng/ml



#2 Decachlorobiphenyl

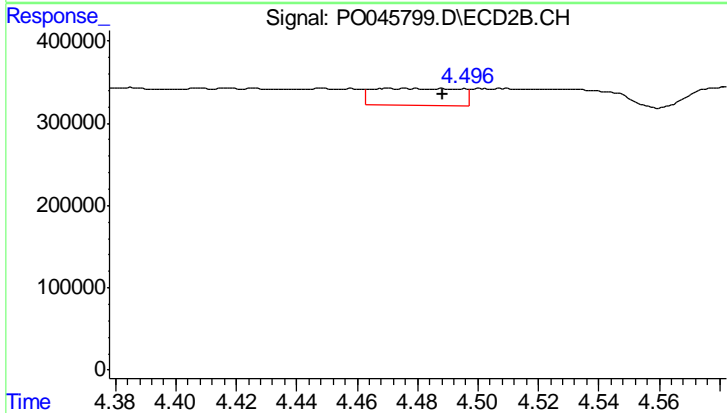
R.T.: 8.604 min  
 Delta R.T.: -0.007 min  
 Response: 932824  
 Conc: 13.34 ng/ml



#3 AR-1016-1

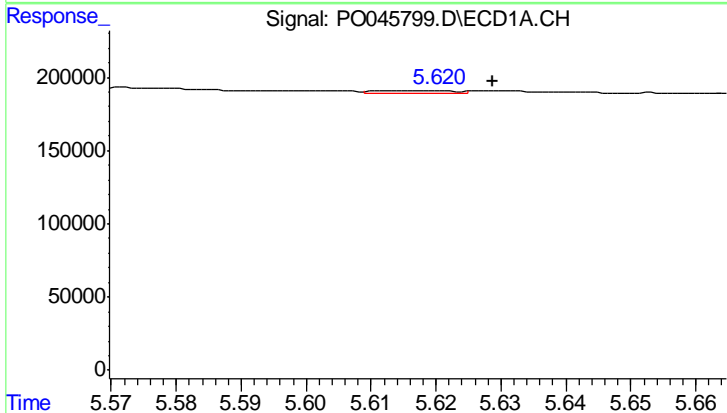
R.T.: 5.281 min  
 Delta R.T.: 0.001 min  
 Response: 151518  
 Conc: 29.93 ng/ml

Instrument :  
 ECD\_O  
 ClientSampleId :



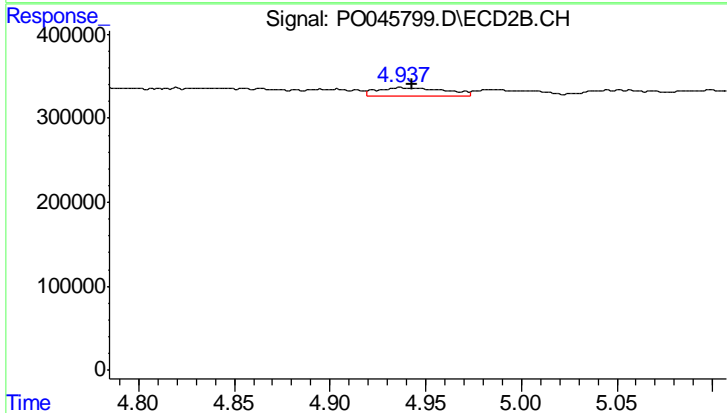
#3 AR-1016-1

R.T.: 4.476 min  
 Delta R.T.: -0.013 min  
 Response: 417468  
 Conc: 123.90 ng/ml



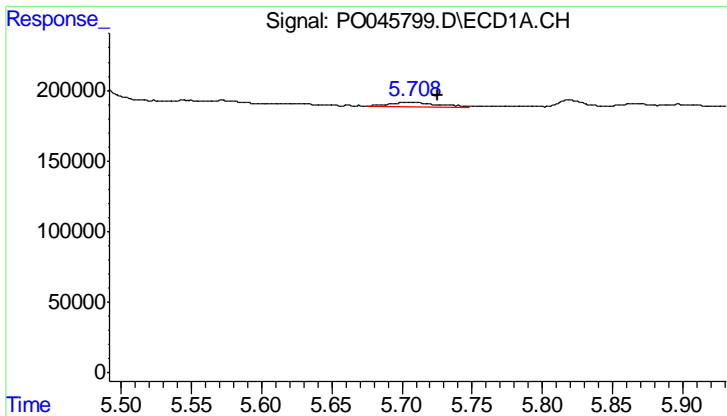
#4 AR-1016-2

R.T.: 5.619 min  
 Delta R.T.: -0.010 min  
 Response: 12296  
 Conc: 1.92 ng/ml



#4 AR-1016-2

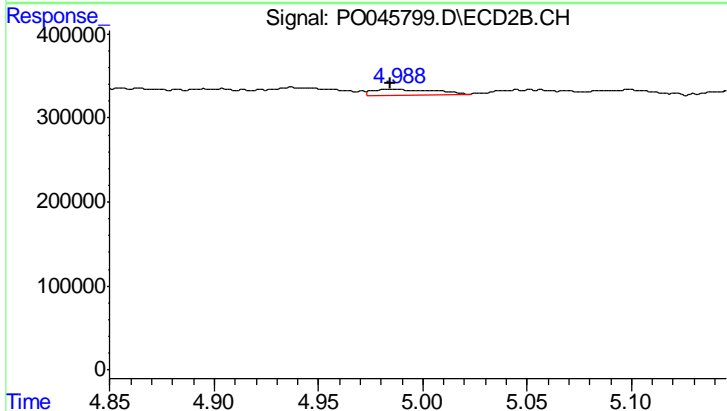
R.T.: 4.938 min  
 Delta R.T.: -0.005 min  
 Response: 244475  
 Conc: 99.79 ng/ml



#5 AR-1016-3

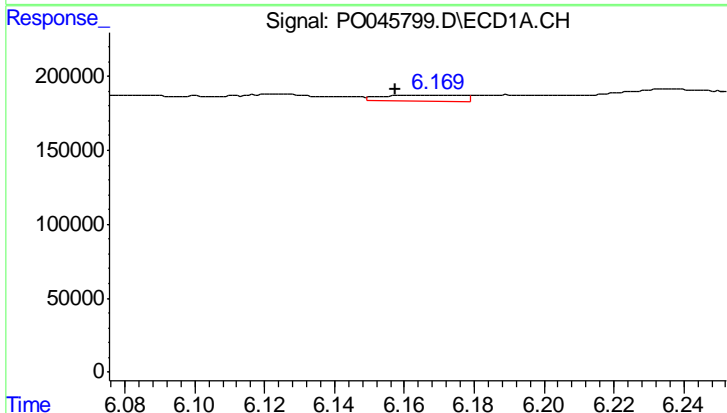
R.T.: 5.708 min  
 Delta R.T.: -0.018 min  
 Response: 72645  
 Conc: 13.78 ng/ml

Instrument :  
 ECD\_O  
 ClientSampleId :



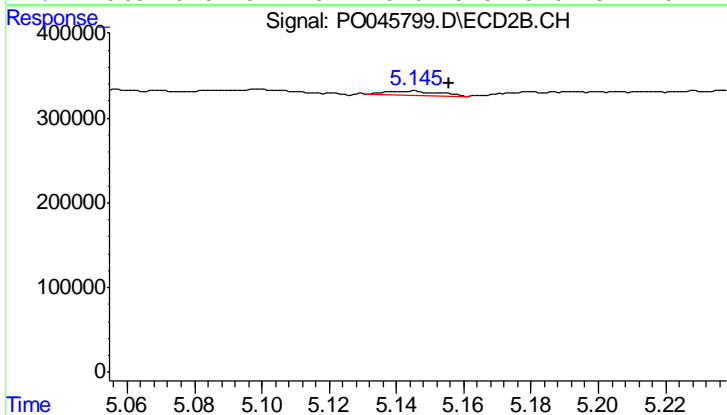
#5 AR-1016-3

R.T.: 4.988 min  
 Delta R.T.: 0.003 min  
 Response: 135560  
 Conc: 42.37 ng/ml



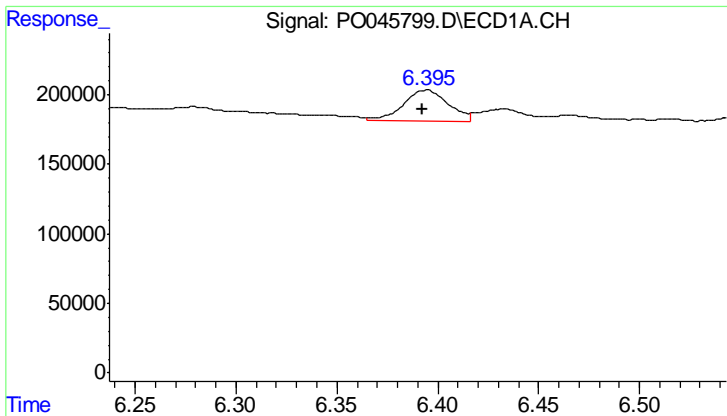
#6 AR-1016-4

R.T.: 6.167 min  
 Delta R.T.: 0.010 min  
 Response: 62355  
 Conc: 11.11 ng/ml



#6 AR-1016-4

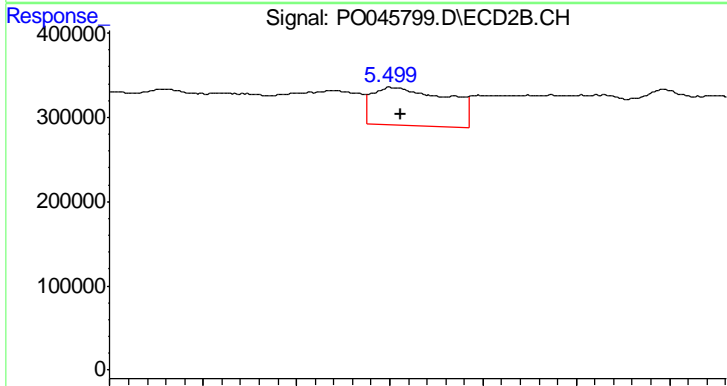
R.T.: 5.145 min  
 Delta R.T.: -0.011 min  
 Response: 49720  
 Conc: 14.22 ng/ml



#7 AR-1016-5

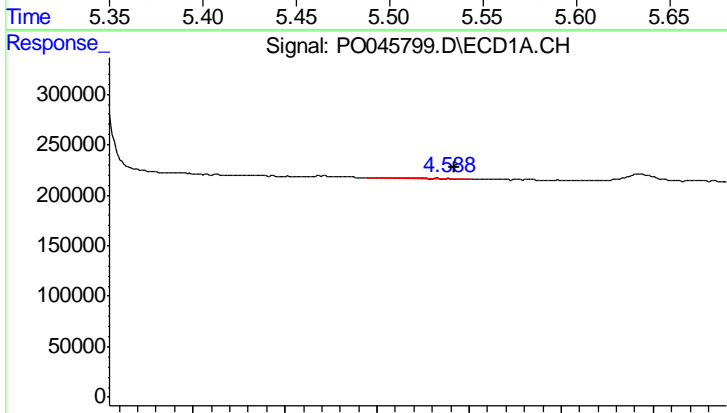
R.T.: 6.394 min  
 Delta R.T.: 0.002 min  
 Response: 355979  
 Conc: 76.01 ng/ml

Instrument :  
 ECD\_O  
 ClientSampled :



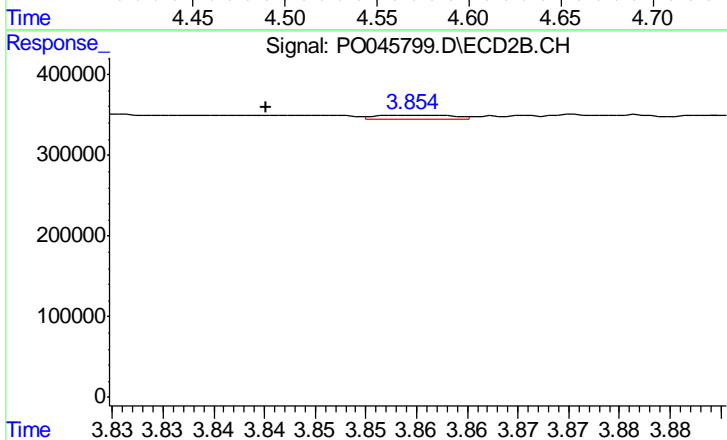
#7 AR-1016-5

R.T.: 5.501 min  
 Delta R.T.: -0.005 min  
 Response: 1278093  
 Conc: 398.08 ng/ml



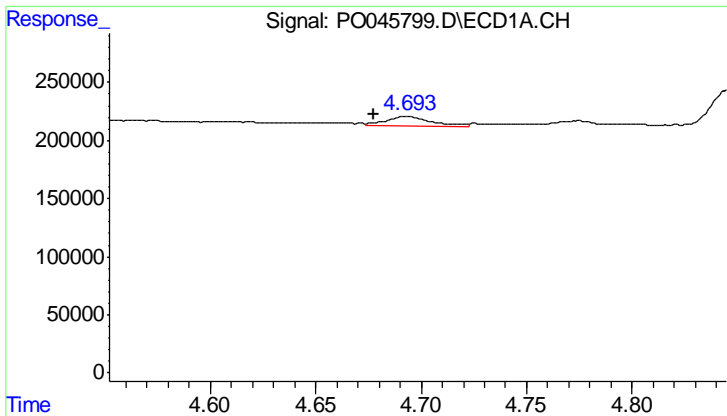
#8 AR-1221-1

R.T.: 4.549 min  
 Delta R.T.: -0.043 min  
 Response: 10914  
 Conc: 3.79 ng/ml



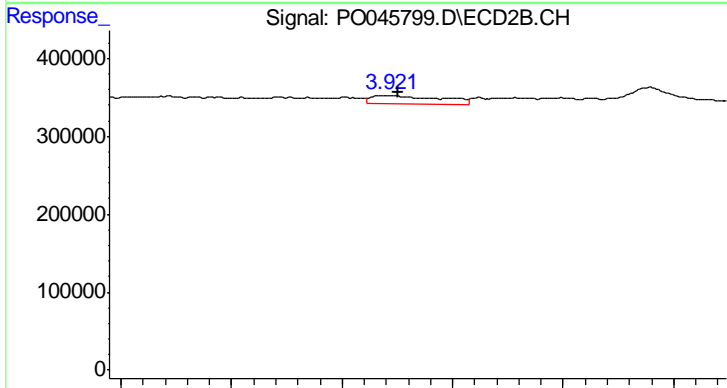
#8 AR-1221-1

R.T.: 3.854 min  
 Delta R.T.: 0.014 min  
 Response: 25955  
 Conc: 14.59 ng/ml

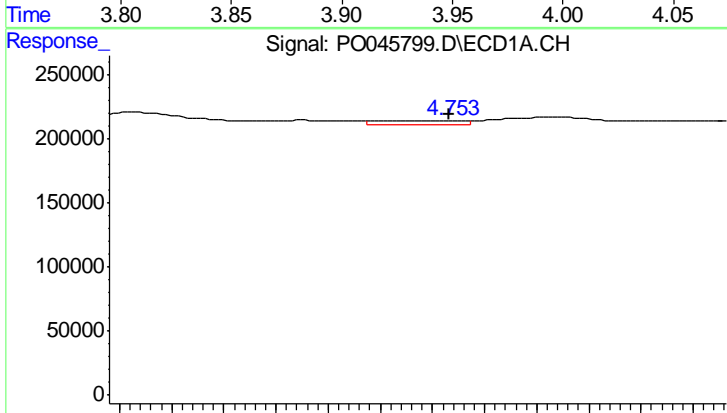


#9 AR-1221-2  
 R.T.: 4.693 min  
 Delta R.T.: 0.015 min  
 Response: 124504  
 Conc: 58.80 ng/ml

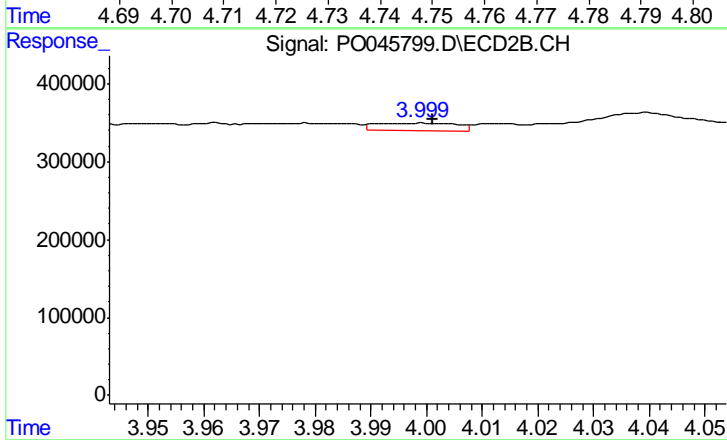
Instrument :  
 ECD\_O  
 ClientSampled :



#9 AR-1221-2  
 R.T.: 3.922 min  
 Delta R.T.: -0.003 min  
 Response: 220668  
 Conc: 174.56 ng/ml

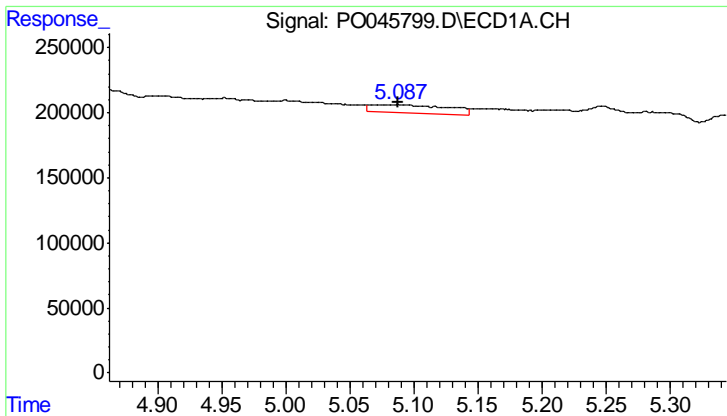


#10 AR-1221-3  
 R.T.: 4.753 min  
 Delta R.T.: 0.000 min  
 Response: 38957  
 Conc: 5.93 ng/ml



#10 AR-1221-3  
 R.T.: 3.999 min  
 Delta R.T.: -0.002 min  
 Response: 104495  
 Conc: 25.60 ng/ml

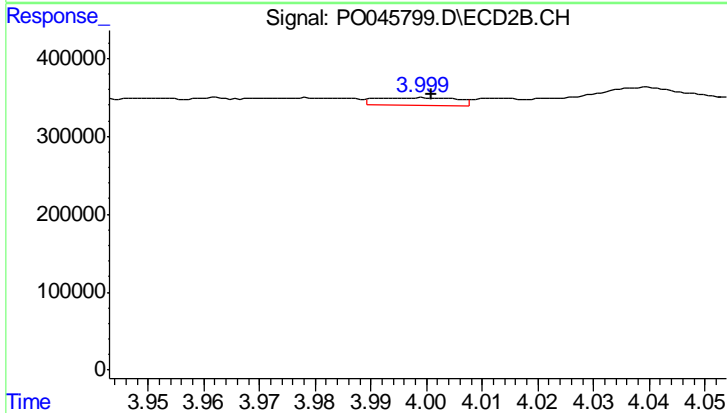




#11 AR-1232-1

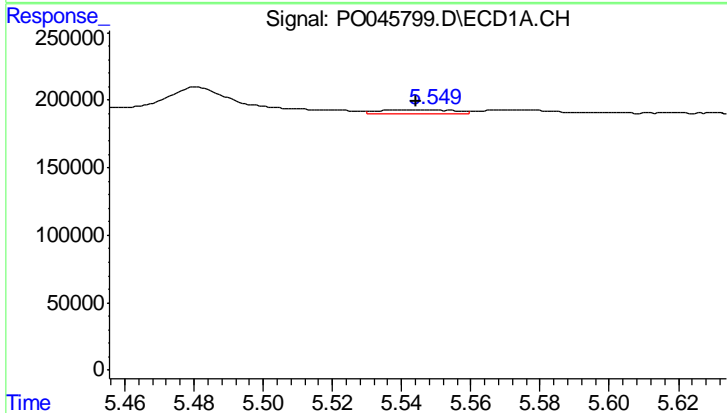
R.T.: 5.087 min  
 Delta R.T.: 0.000 min  
 Response: 263260  
 Conc: 110.11 ng/ml

Instrument :  
 ECD\_O  
 ClientSampled :



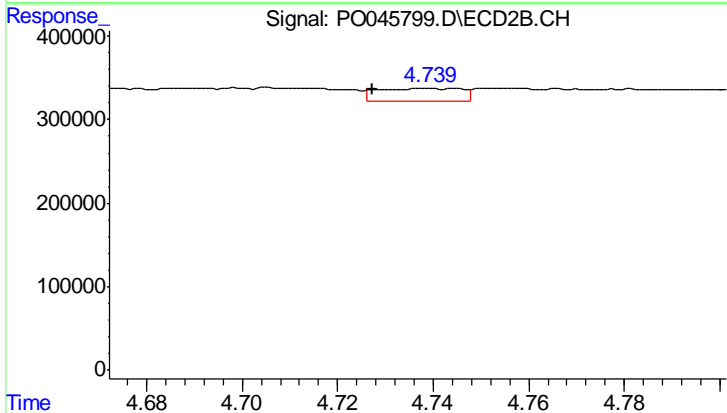
#11 AR-1232-1

R.T.: 3.999 min  
 Delta R.T.: -0.002 min  
 Response: 104495  
 Conc: 40.14 ng/ml



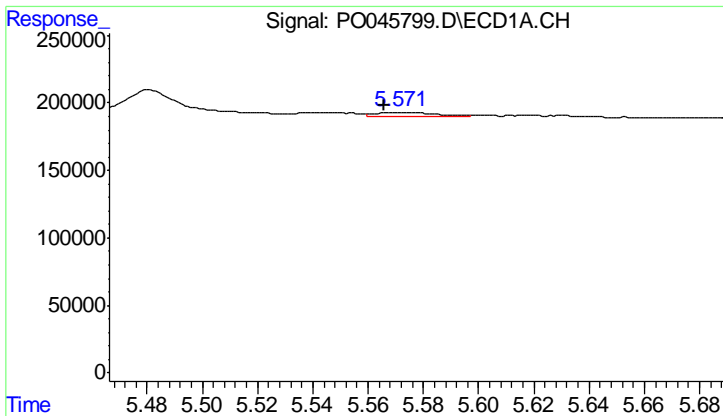
#12 AR-1232-2

R.T.: 5.544 min  
 Delta R.T.: 0.000 min  
 Response: 42680  
 Conc: 12.88 ng/ml



#12 AR-1232-2

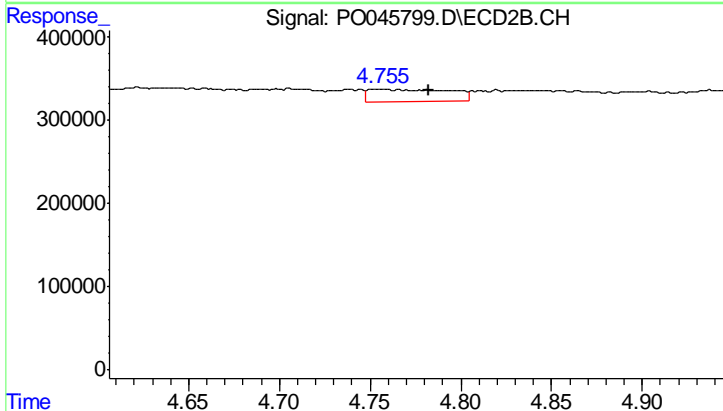
R.T.: 4.739 min  
 Delta R.T.: 0.011 min  
 Response: 185814  
 Conc: 67.21 ng/ml



#13 AR-1232-3

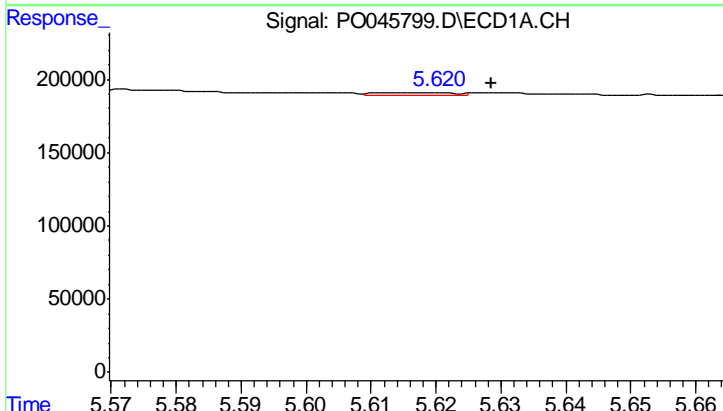
R.T.: 5.572 min  
 Delta R.T.: 0.006 min  
 Response: 49943  
 Conc: 10.52 ng/ml

Instrument :  
 ECD\_O  
 ClientSampled :



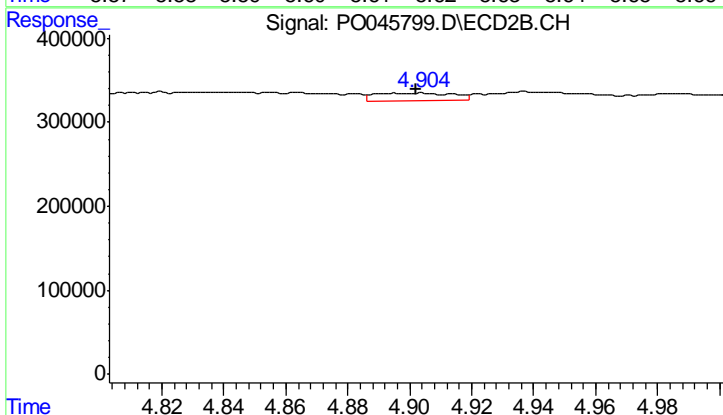
#13 AR-1232-3

R.T.: 4.756 min  
 Delta R.T.: -0.026 min  
 Response: 454769  
 Conc: 228.84 ng/ml



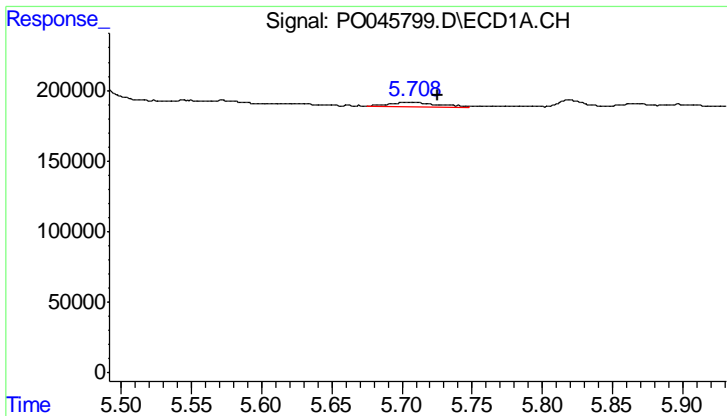
#14 AR-1232-4

R.T.: 5.619 min  
 Delta R.T.: -0.010 min  
 Response: 12296  
 Conc: 4.05 ng/ml



#14 AR-1232-4

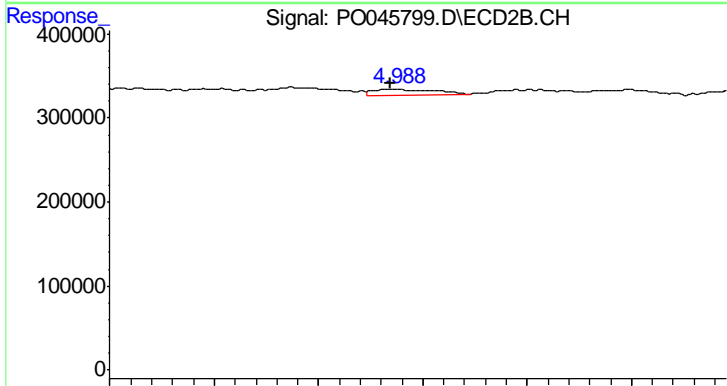
R.T.: 4.904 min  
 Delta R.T.: 0.002 min  
 Response: 166423  
 Conc: 111.37 ng/ml



#15 AR-1232-5

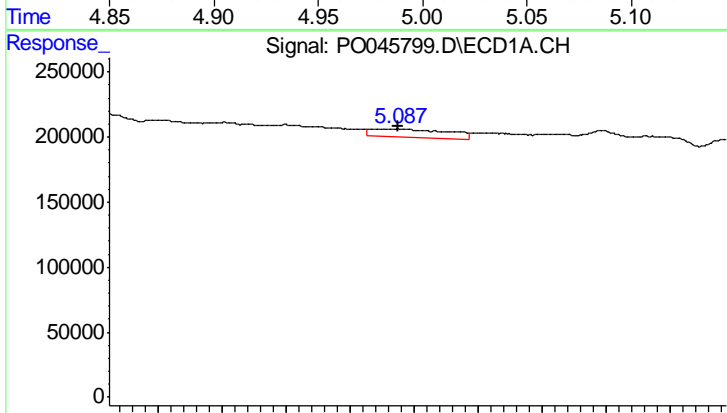
R.T.: 5.708 min  
 Delta R.T.: -0.018 min  
 Response: 72645  
 Conc: 29.54 ng/ml

Instrument :  
 ECD\_O  
 ClientSampled :



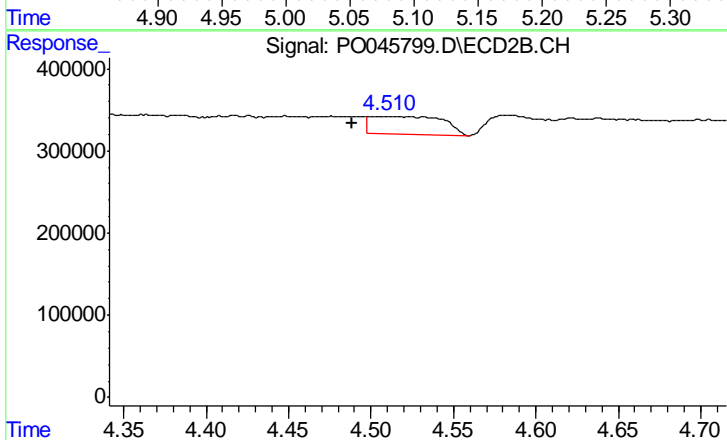
#15 AR-1232-5

R.T.: 4.988 min  
 Delta R.T.: 0.003 min  
 Response: 135560  
 Conc: 97.23 ng/ml



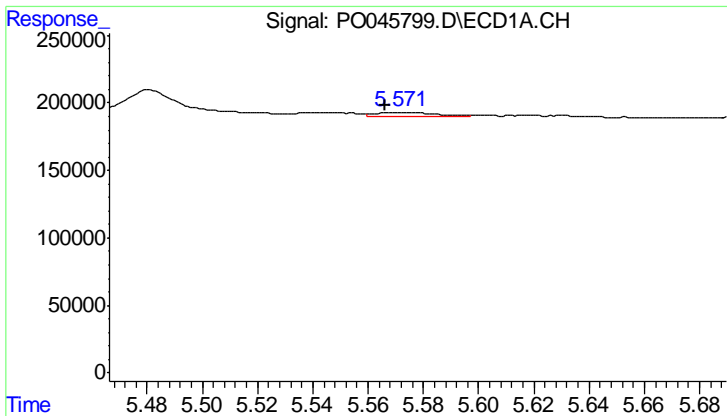
#16 AR-1242-1

R.T.: 5.087 min  
 Delta R.T.: 0.000 min  
 Response: 263260  
 Conc: 65.25 ng/ml



#16 AR-1242-1

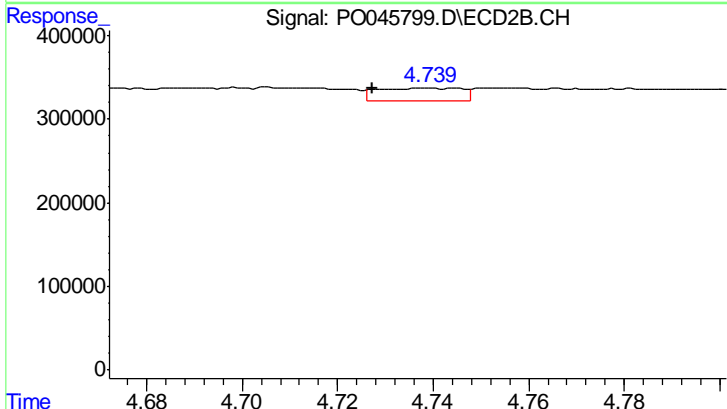
R.T.: 4.502 min  
 Delta R.T.: 0.013 min  
 Response: 682527  
 Conc: 261.79 ng/ml



#17 AR-1242-2

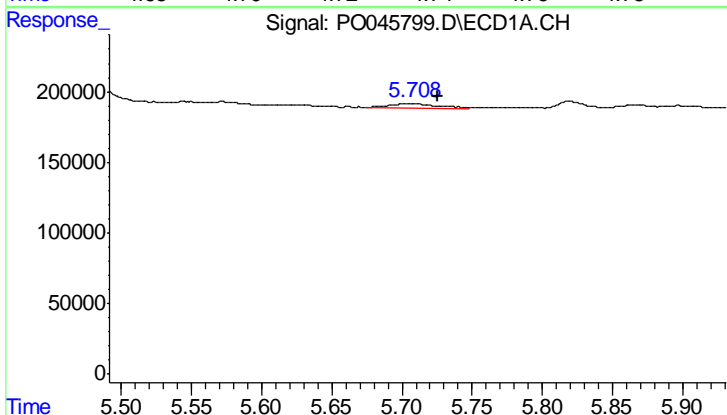
R.T.: 5.572 min  
 Delta R.T.: 0.006 min  
 Response: 49943  
 Conc: 6.18 ng/ml

Instrument :  
 ECD\_O  
 ClientSampled :



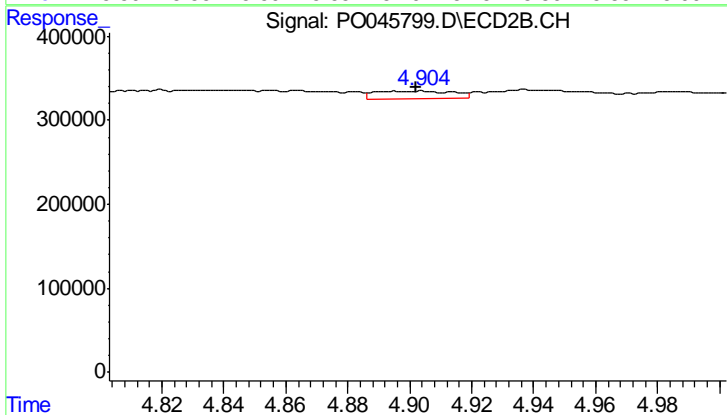
#17 AR-1242-2

R.T.: 4.739 min  
 Delta R.T.: 0.011 min  
 Response: 185814  
 Conc: 40.12 ng/ml



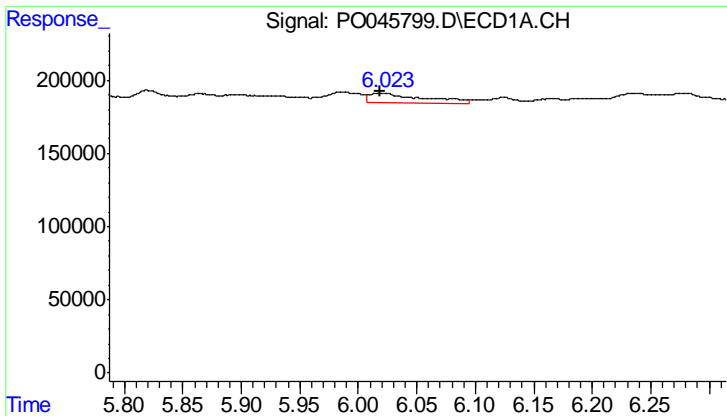
#18 AR-1242-3

R.T.: 5.708 min  
 Delta R.T.: -0.018 min  
 Response: 72645  
 Conc: 17.18 ng/ml



#18 AR-1242-3

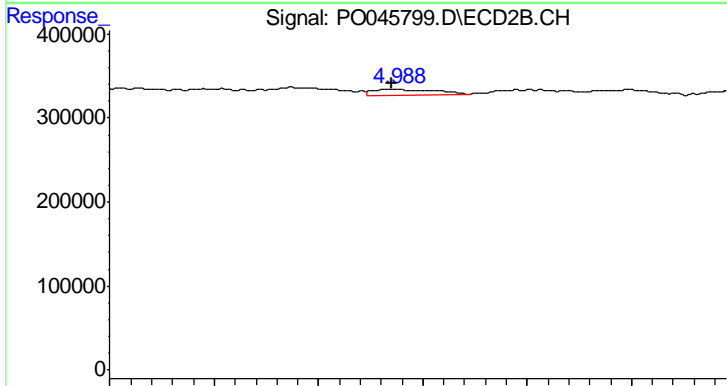
R.T.: 4.904 min  
 Delta R.T.: 0.002 min  
 Response: 166423  
 Conc: 66.86 ng/ml



#19 AR-1242-4

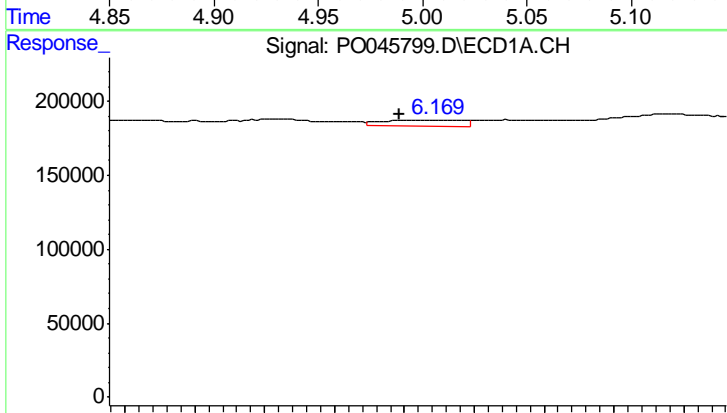
R.T.: 6.022 min  
 Delta R.T.: 0.004 min  
 Response: 201811  
 Conc: 48.48 ng/ml

Instrument :  
 ECD\_O  
 ClientSampled :



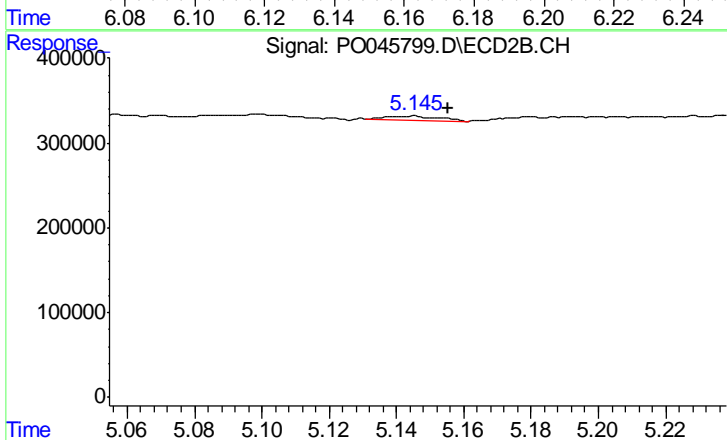
#19 AR-1242-4

R.T.: 4.988 min  
 Delta R.T.: 0.003 min  
 Response: 135560  
 Conc: 55.04 ng/ml



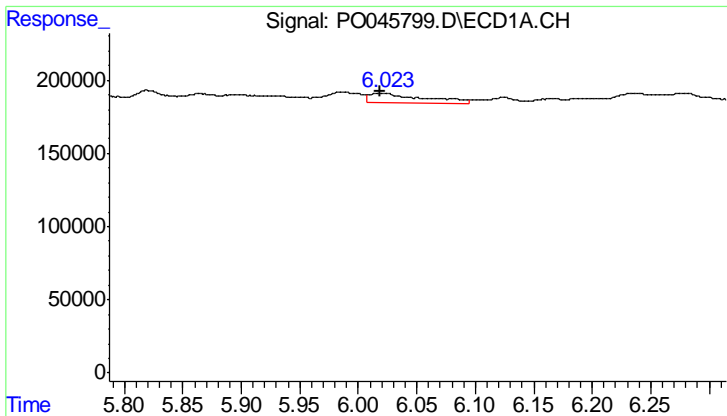
#20 AR-1242-5

R.T.: 6.167 min  
 Delta R.T.: 0.009 min  
 Response: 62355  
 Conc: 13.18 ng/ml



#20 AR-1242-5

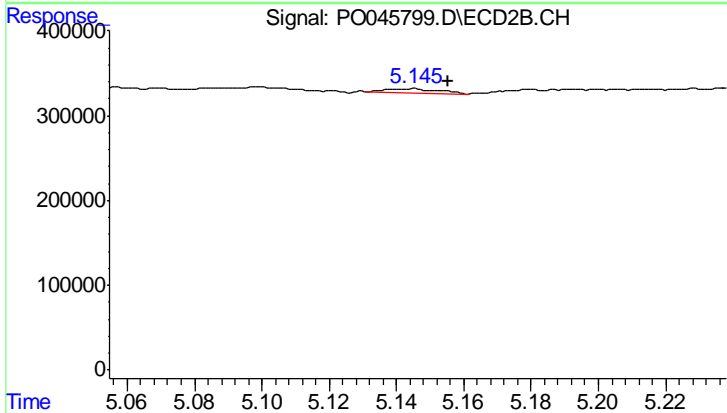
R.T.: 5.145 min  
 Delta R.T.: -0.010 min  
 Response: 49720  
 Conc: 18.70 ng/ml



#21 AR-1248-1

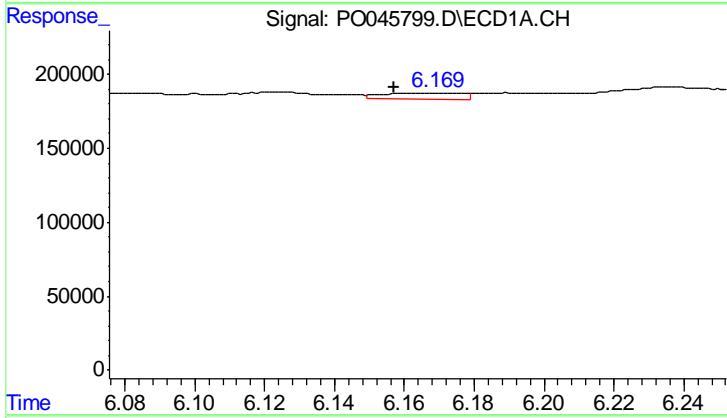
R.T.: 6.022 min  
 Delta R.T.: 0.004 min  
 Response: 201811  
 Conc: 26.87 ng/ml

Instrument :  
 ECD\_O  
 ClientSampled :



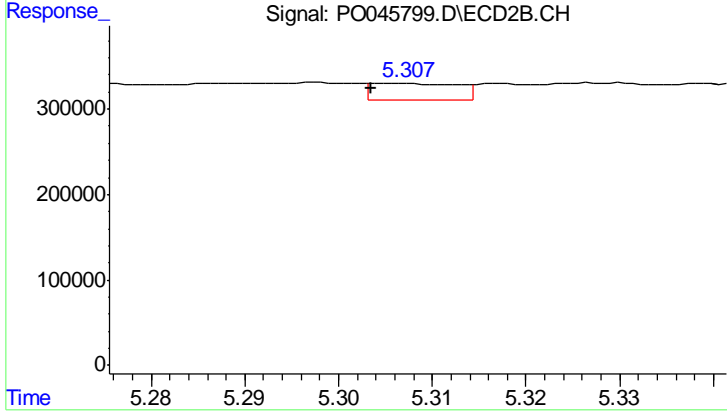
#21 AR-1248-1

R.T.: 5.145 min  
 Delta R.T.: -0.011 min  
 Response: 49720  
 Conc: 10.80 ng/ml



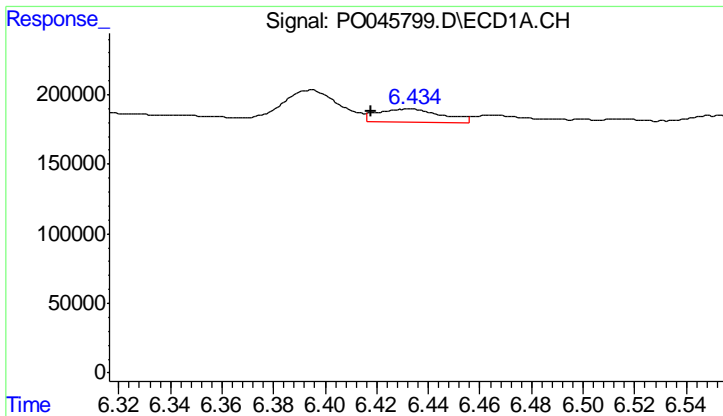
#22 AR-1248-2

R.T.: 6.167 min  
 Delta R.T.: 0.010 min  
 Response: 62355  
 Conc: 9.37 ng/ml



#22 AR-1248-2

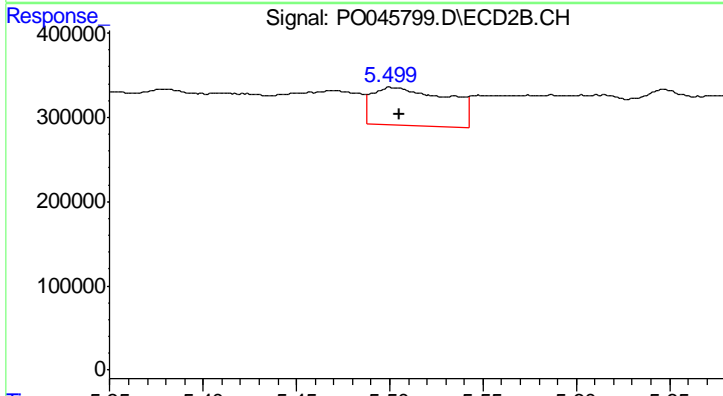
R.T.: 5.306 min  
 Delta R.T.: 0.003 min  
 Response: 125922  
 Conc: 30.47 ng/ml



#23 AR-1248-3

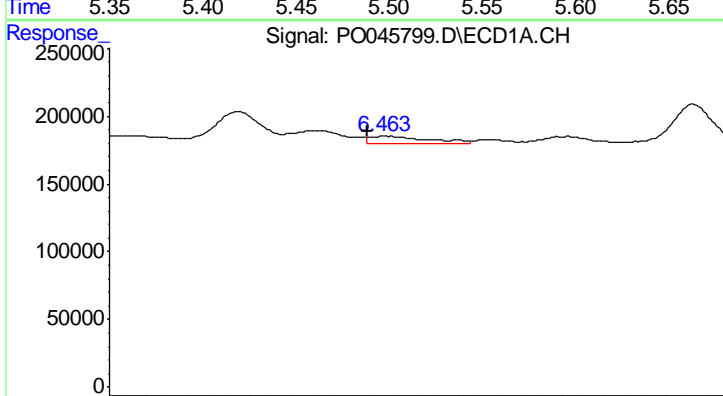
R.T.: 6.432 min  
 Delta R.T.: 0.014 min  
 Response: 162004  
 Conc: 19.04 ng/ml

Instrument :  
 ECD\_O  
 ClientSampled :



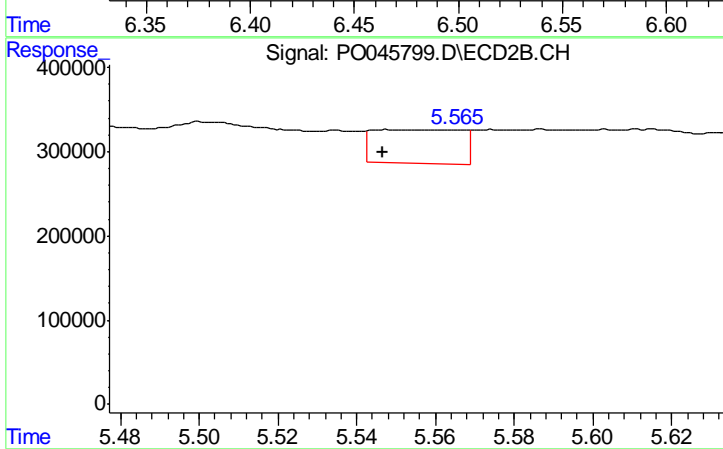
#23 AR-1248-3

R.T.: 5.501 min  
 Delta R.T.: -0.005 min  
 Response: 1278093  
 Conc: 203.31 ng/ml



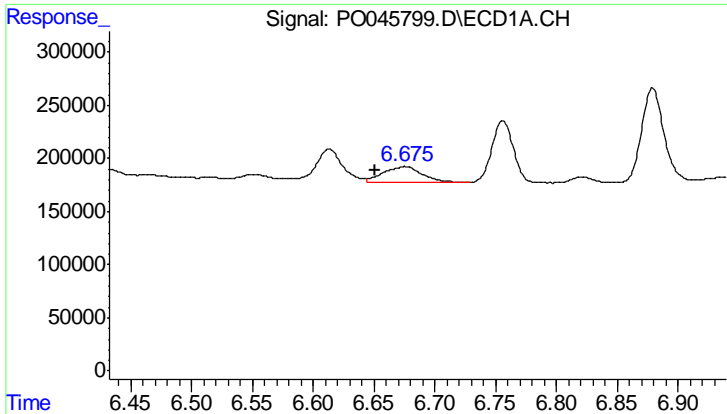
#24 AR-1248-4

R.T.: 6.464 min  
 Delta R.T.: 0.008 min  
 Response: 101994  
 Conc: 12.45 ng/ml



#24 AR-1248-4

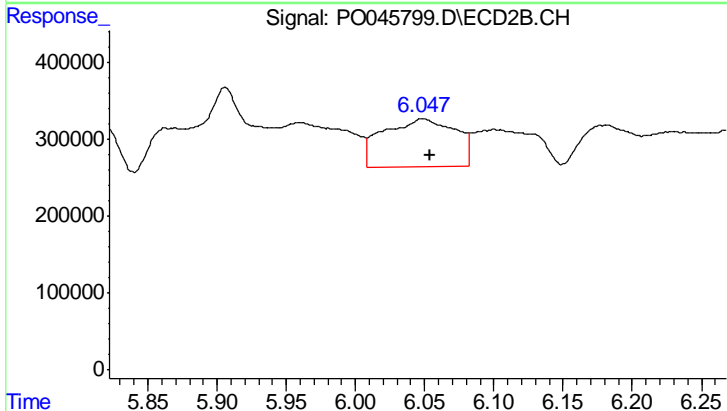
R.T.: 5.548 min  
 Delta R.T.: 0.001 min  
 Response: 622985  
 Conc: 135.52 ng/ml



#25 AR-1248-5

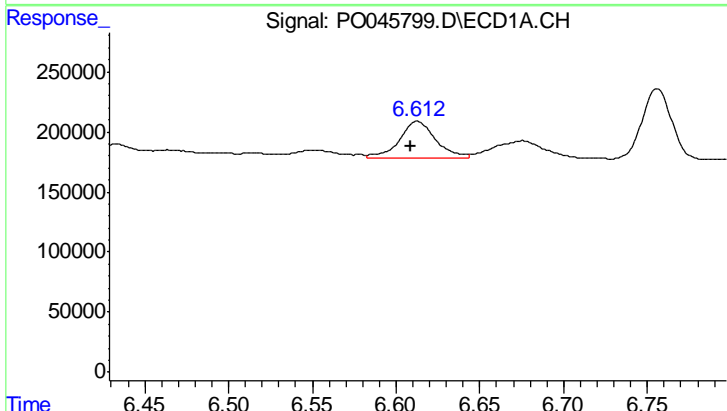
R.T.: 6.676 min  
 Delta R.T.: 0.025 min  
 Response: 328971  
 Conc: 60.33 ng/ml

Instrument :  
 ECD\_O  
 ClientSampled :



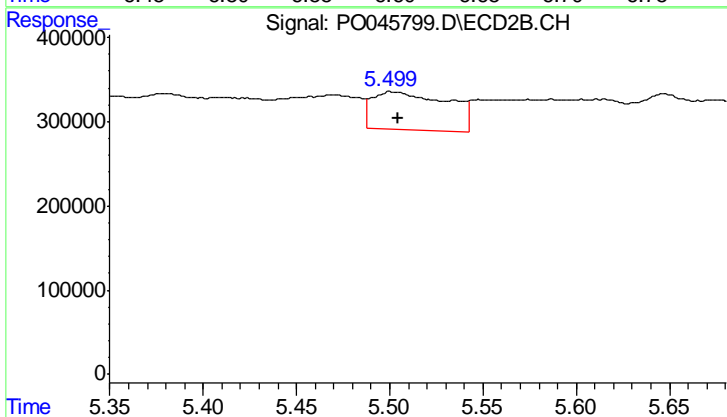
#25 AR-1248-5

R.T.: 6.048 min  
 Delta R.T.: -0.006 min  
 Response: 2273889  
 Conc: 752.36 ng/ml



#26 AR-1254-1

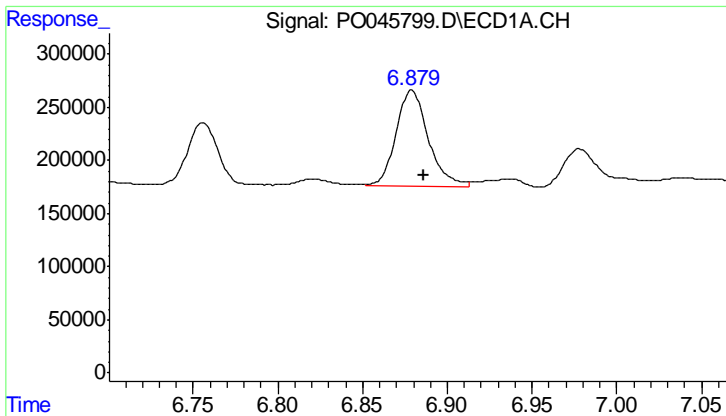
R.T.: 6.613 min  
 Delta R.T.: 0.004 min  
 Response: 458580  
 Conc: 34.18 ng/ml



#26 AR-1254-1

R.T.: 5.501 min  
 Delta R.T.: -0.004 min  
 Response: 1278093  
 Conc: 187.73 ng/ml

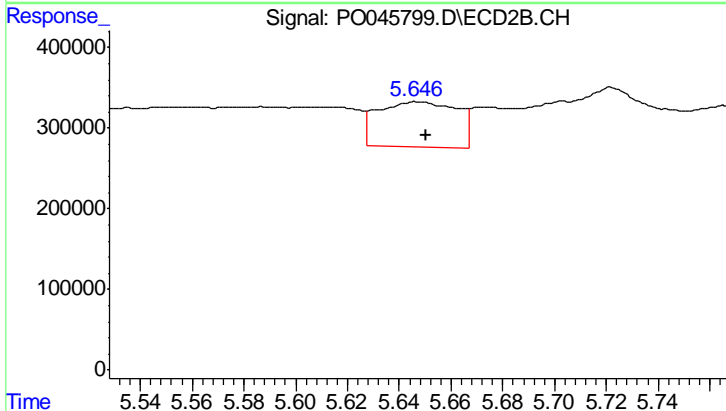




#27 AR-1254-2

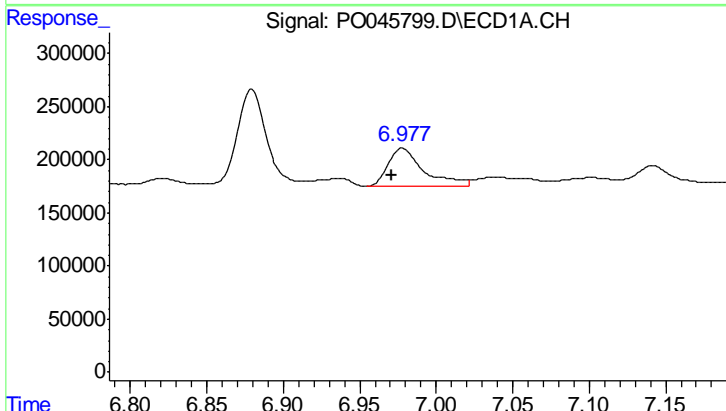
R.T.: 6.879 min  
 Delta R.T.: -0.007 min  
 Response: 1216667  
 Conc: 149.53 ng/ml

Instrument :  
 ECD\_O  
 ClientSampled :



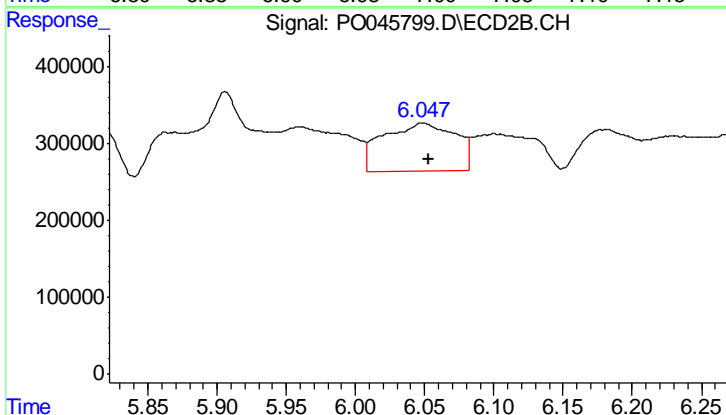
#27 AR-1254-2

R.T.: 5.647 min  
 Delta R.T.: -0.004 min  
 Response: 1199158  
 Conc: 197.56 ng/ml



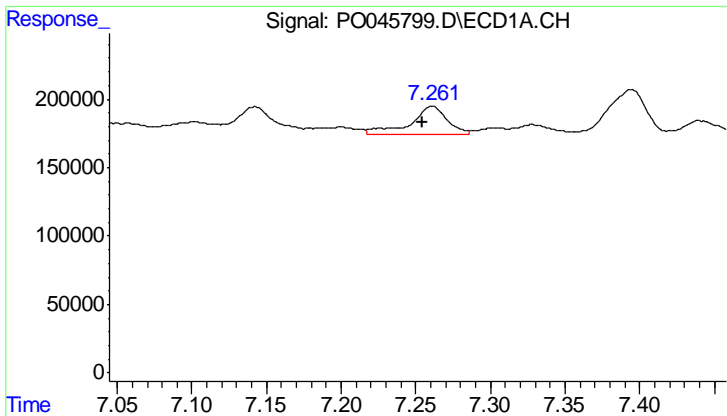
#28 AR-1254-3

R.T.: 6.978 min  
 Delta R.T.: 0.007 min  
 Response: 602018  
 Conc: 42.27 ng/ml



#28 AR-1254-3

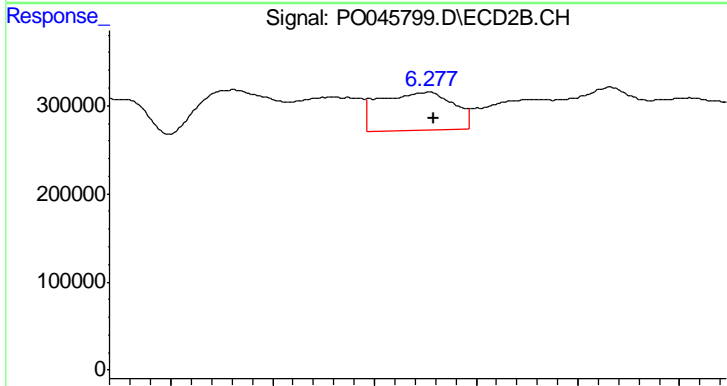
R.T.: 6.048 min  
 Delta R.T.: -0.005 min  
 Response: 2273889  
 Conc: 239.96 ng/ml



#29 AR-1254-4

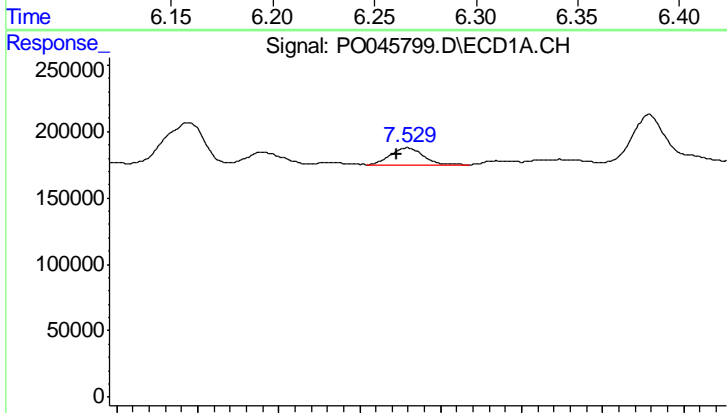
R.T.: 7.261 min  
 Delta R.T.: 0.006 min  
 Response: 346474  
 Conc: 33.90 ng/ml

Instrument :  
 ECD\_O  
 ClientSampled :



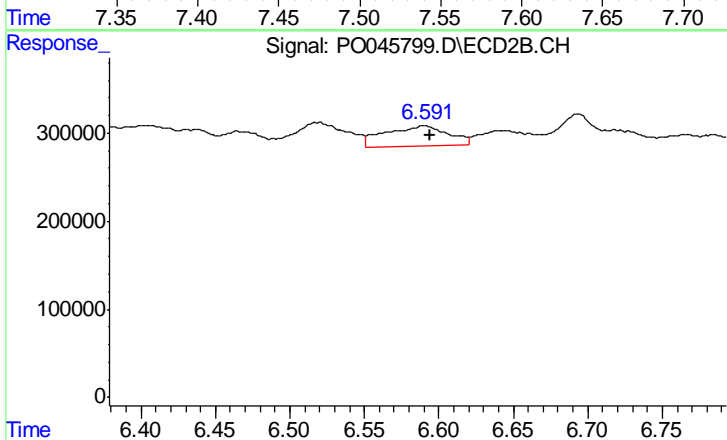
#29 AR-1254-4

R.T.: 6.277 min  
 Delta R.T.: -0.002 min  
 Response: 1096256  
 Conc: 184.34 ng/ml



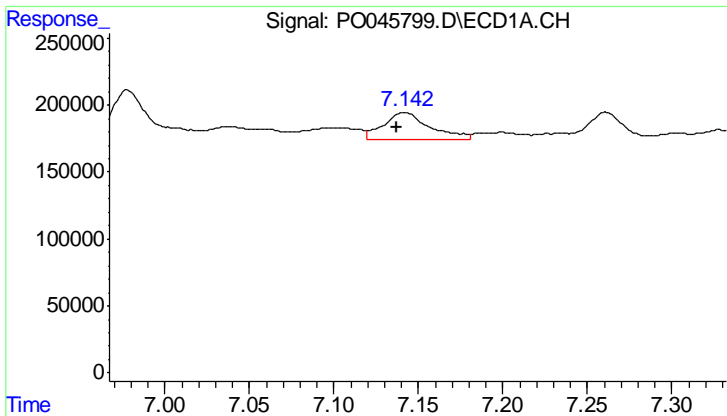
#30 AR-1254-5

R.T.: 7.530 min  
 Delta R.T.: 0.006 min  
 Response: 203485  
 Conc: 27.07 ng/ml



#30 AR-1254-5

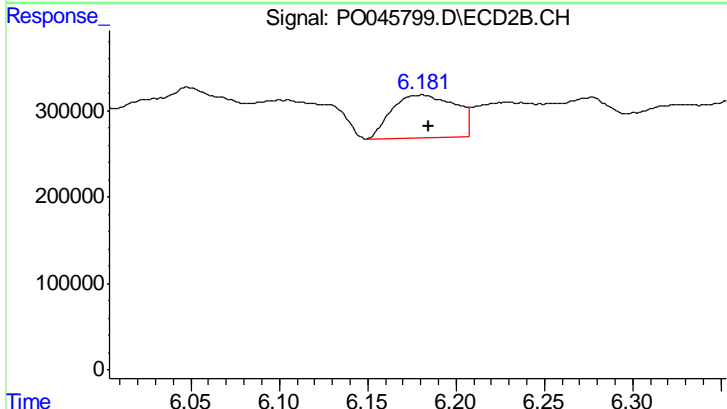
R.T.: 6.590 min  
 Delta R.T.: -0.003 min  
 Response: 697331  
 Conc: 173.46 ng/ml



#31 AR-1260-1

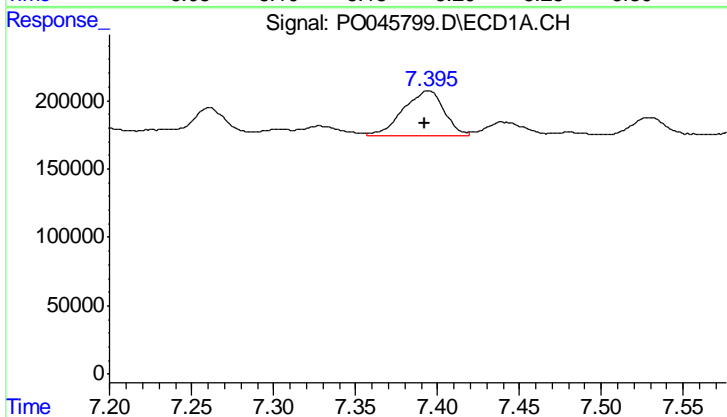
R.T.: 7.142 min  
 Delta R.T.: 0.004 min  
 Response: 377165  
 Conc: 37.80 ng/ml

Instrument :  
 ECD\_O  
 ClientSampled :



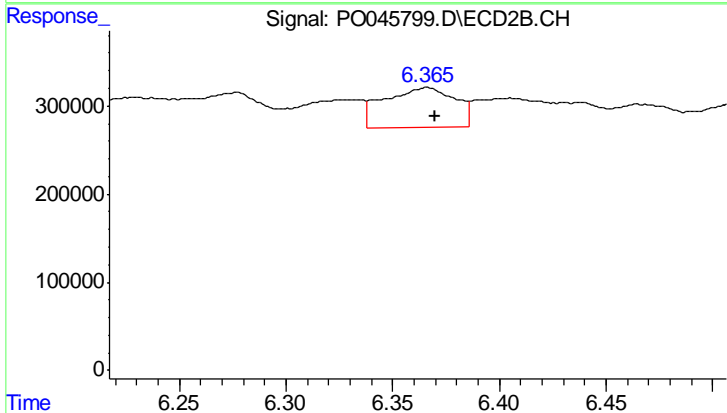
#31 AR-1260-1

R.T.: 6.181 min  
 Delta R.T.: -0.003 min  
 Response: 1244061  
 Conc: 194.96 ng/ml



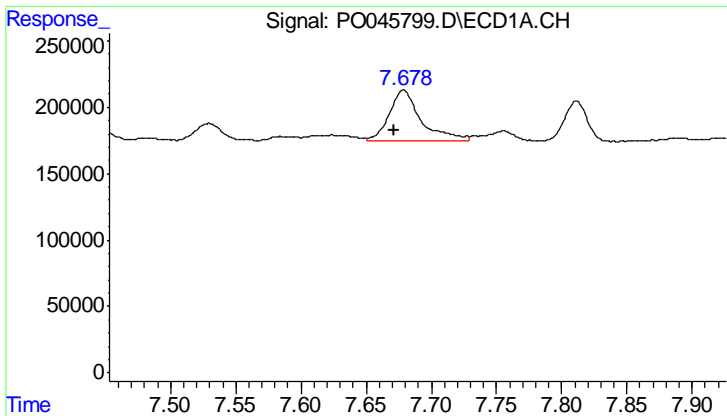
#32 AR-1260-2

R.T.: 7.395 min  
 Delta R.T.: 0.003 min  
 Response: 569131  
 Conc: 49.59 ng/ml



#32 AR-1260-2

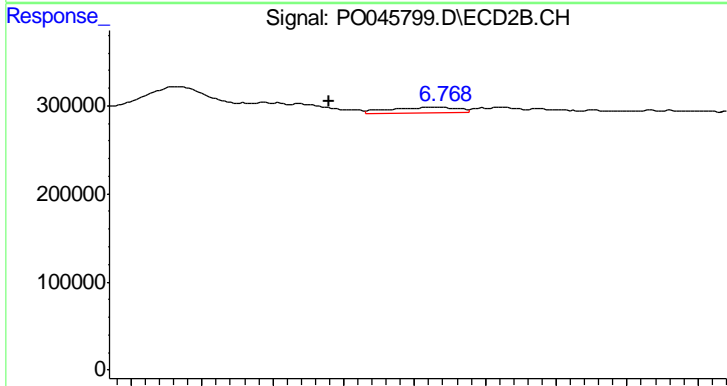
R.T.: 6.366 min  
 Delta R.T.: -0.004 min  
 Response: 1043739  
 Conc: 138.95 ng/ml



#33 AR-1260-3

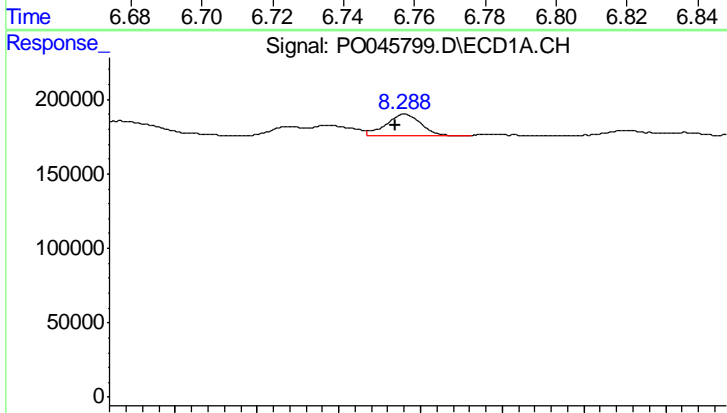
R.T.: 7.679 min  
 Delta R.T.: 0.007 min  
 Response: 672440  
 Conc: 51.42 ng/ml

Instrument :  
 ECD\_O  
 ClientSampled :



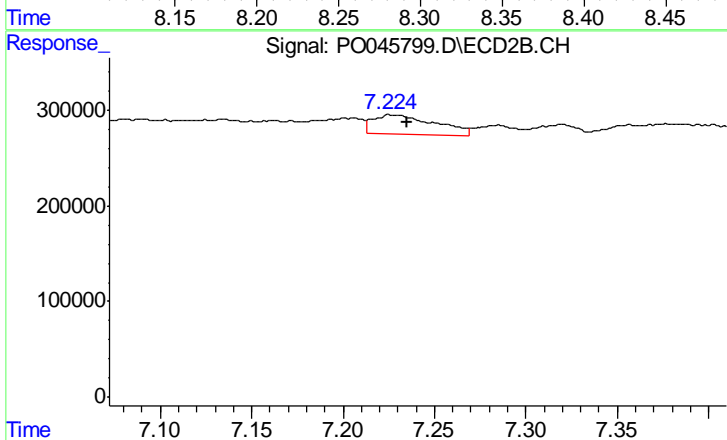
#33 AR-1260-3

R.T.: 6.767 min  
 Delta R.T.: 0.031 min  
 Response: 86323  
 Conc: 15.84 ng/ml



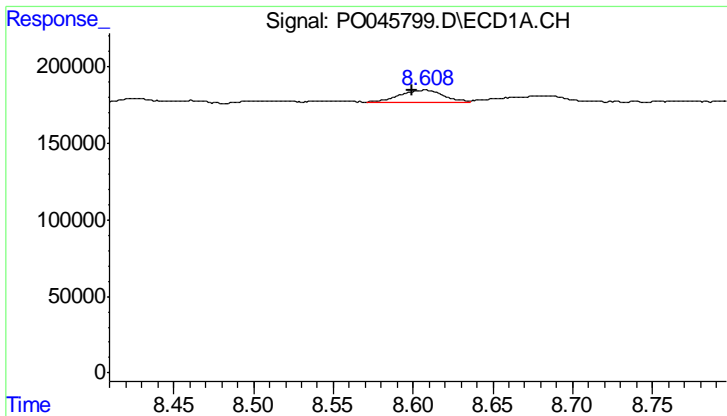
#34 AR-1260-4

R.T.: 8.290 min  
 Delta R.T.: 0.005 min  
 Response: 225050  
 Conc: 12.96 ng/ml



#34 AR-1260-4

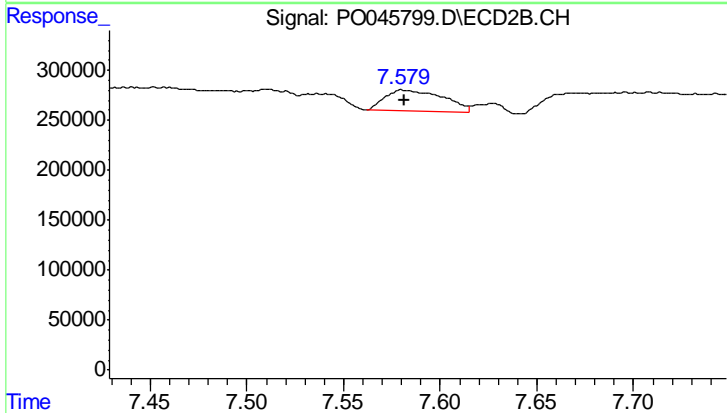
R.T.: 7.227 min  
 Delta R.T.: -0.008 min  
 Response: 470759  
 Conc: 43.45 ng/ml



#35 AR-1260-5

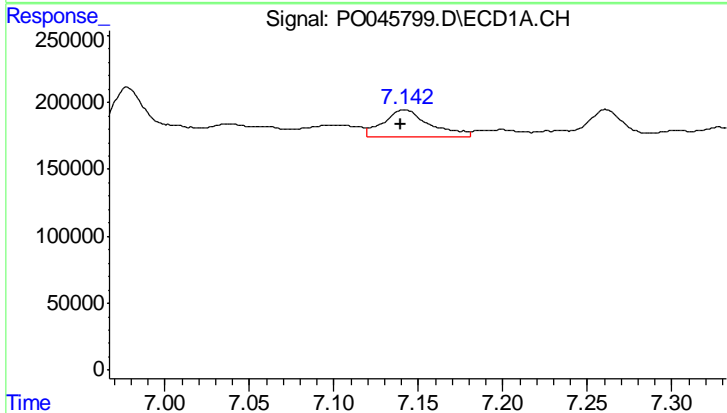
R.T.: 8.608 min  
 Delta R.T.: 0.008 min  
 Response: 147944  
 Conc: 13.65 ng/ml

Instrument :  
 ECD\_O  
 ClientSampled :



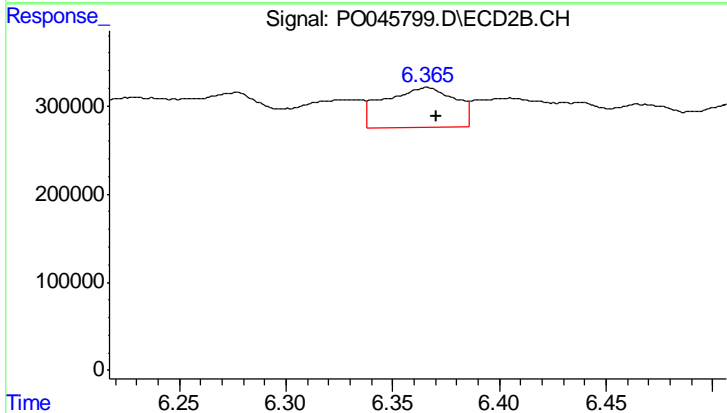
#35 AR-1260-5

R.T.: 7.580 min  
 Delta R.T.: -0.001 min  
 Response: 455506  
 Conc: 60.33 ng/ml



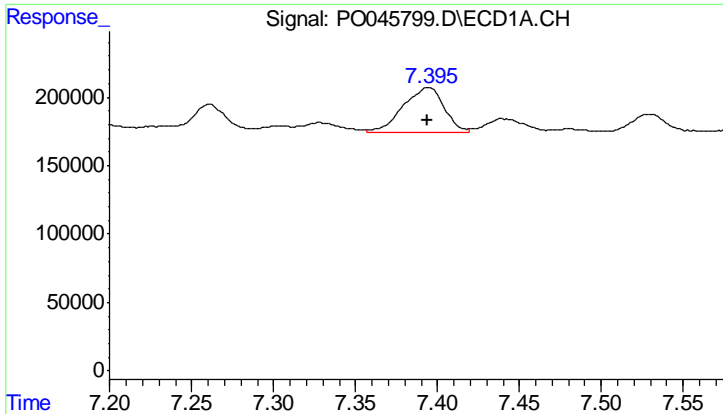
#36 AR-1262-1

R.T.: 7.142 min  
 Delta R.T.: 0.003 min  
 Response: 377165  
 Conc: 41.64 ng/ml



#36 AR-1262-1

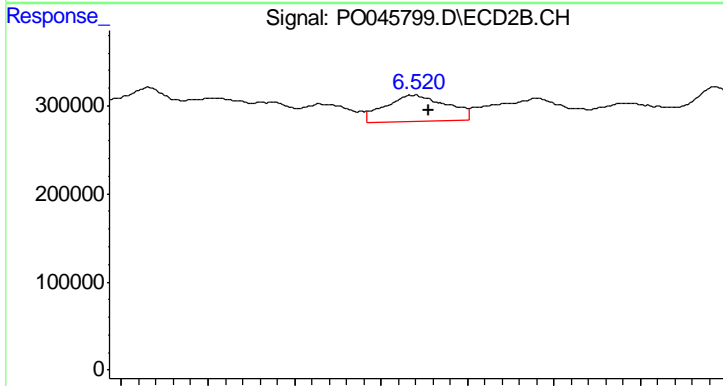
R.T.: 6.366 min  
 Delta R.T.: -0.004 min  
 Response: 1043739  
 Conc: 166.19 ng/ml



#37 AR-1262-2

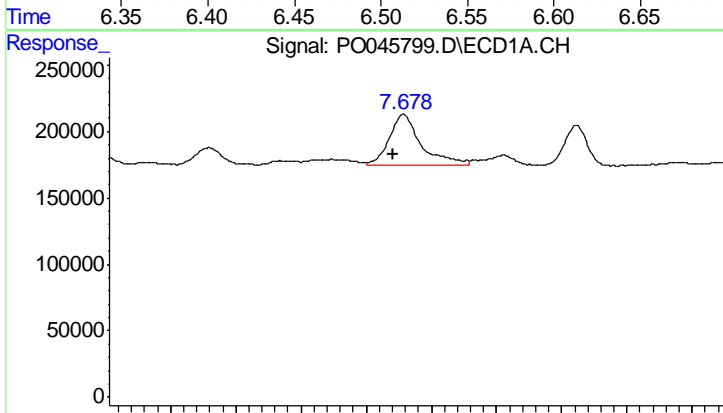
R.T.: 7.395 min  
 Delta R.T.: 0.000 min  
 Response: 569131  
 Conc: 55.10 ng/ml

Instrument :  
 ECD\_O  
 ClientSampled :



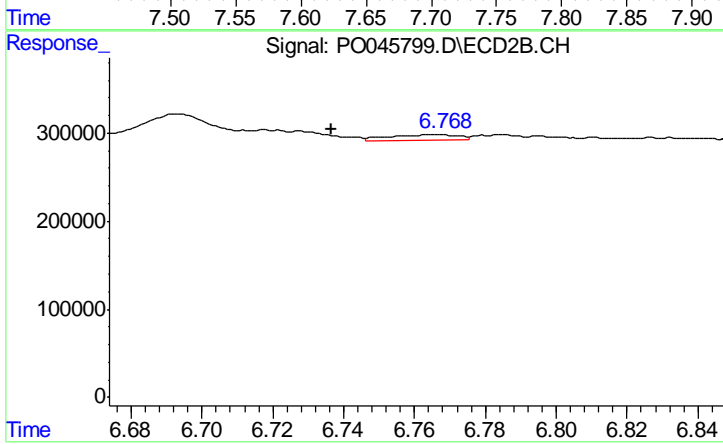
#37 AR-1262-2

R.T.: 6.519 min  
 Delta R.T.: -0.009 min  
 Response: 745787  
 Conc: 123.28 ng/ml



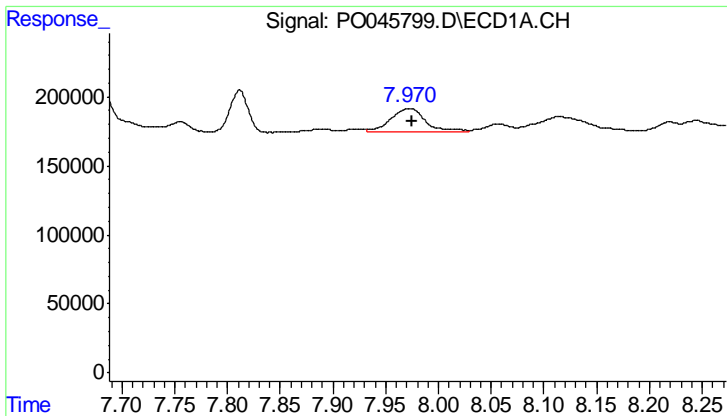
#38 AR-1262-3

R.T.: 7.679 min  
 Delta R.T.: 0.008 min  
 Response: 672440  
 Conc: 71.94 ng/ml



#38 AR-1262-3

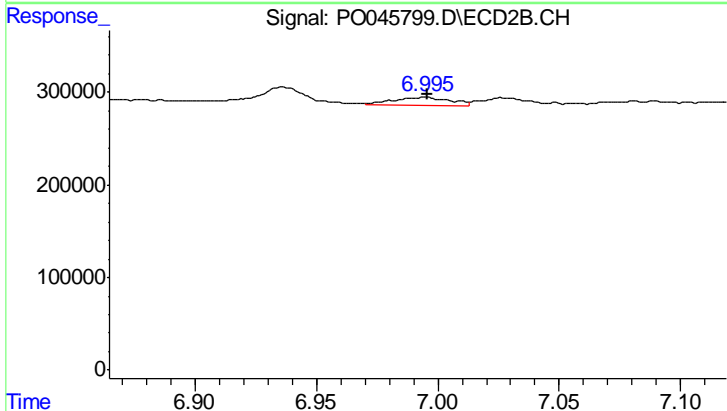
R.T.: 6.767 min  
 Delta R.T.: 0.031 min  
 Response: 86323  
 Conc: 10.95 ng/ml



#39 AR-1262-4

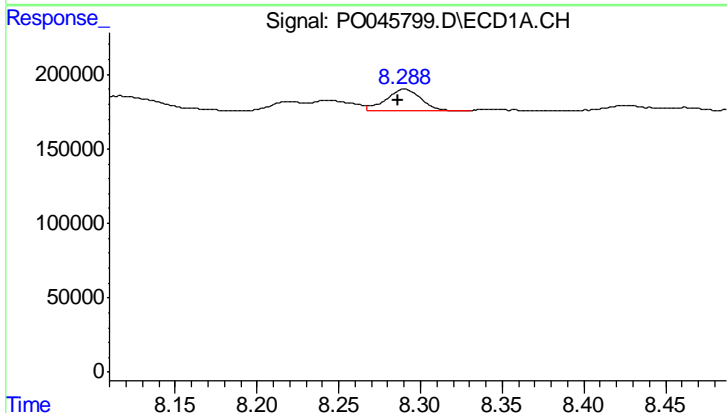
R.T.: 7.971 min  
 Delta R.T.: -0.004 min  
 Response: 396000  
 Conc: 30.88 ng/ml

Instrument :  
 ECD\_O  
 ClientSampled :



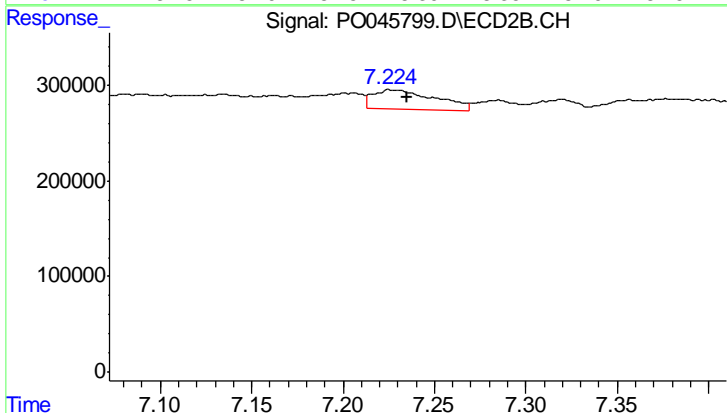
#39 AR-1262-4

R.T.: 6.995 min  
 Delta R.T.: 0.000 min  
 Response: 142246  
 Conc: 20.36 ng/ml



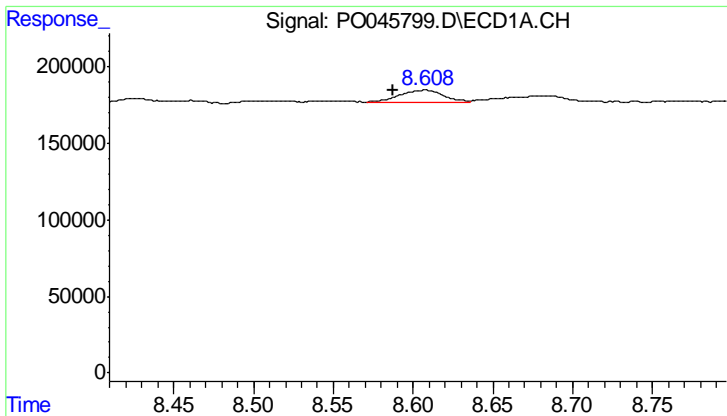
#40 AR-1262-5

R.T.: 8.290 min  
 Delta R.T.: 0.004 min  
 Response: 225050  
 Conc: 9.84 ng/ml



#40 AR-1262-5

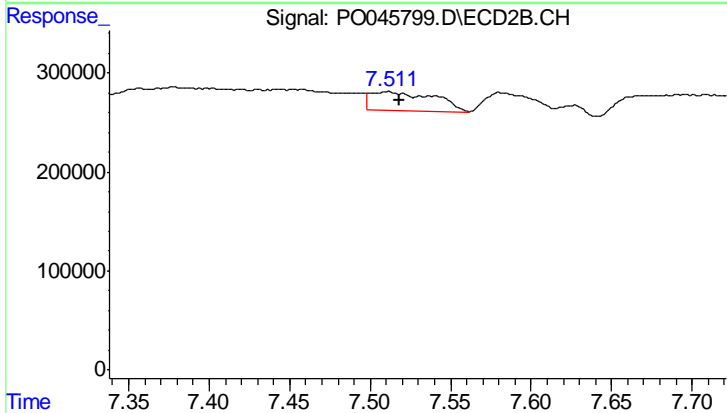
R.T.: 7.227 min  
 Delta R.T.: -0.008 min  
 Response: 470759  
 Conc: 37.83 ng/ml



#41 AR-1268-1

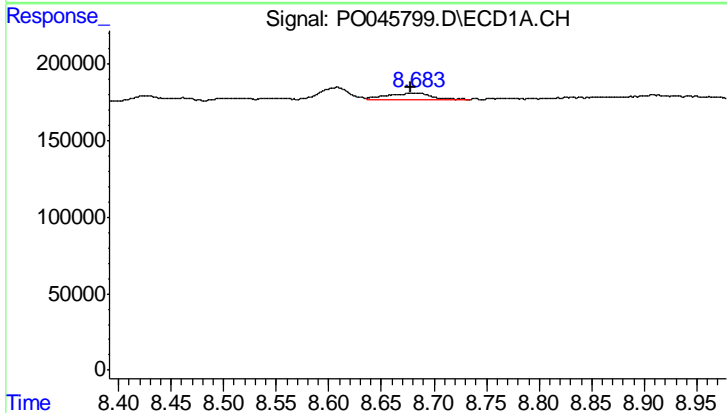
R.T.: 8.608 min  
 Delta R.T.: 0.020 min  
 Response: 147944  
 Conc: 6.49 ng/ml

Instrument :  
 ECD\_O  
 ClientSampled :



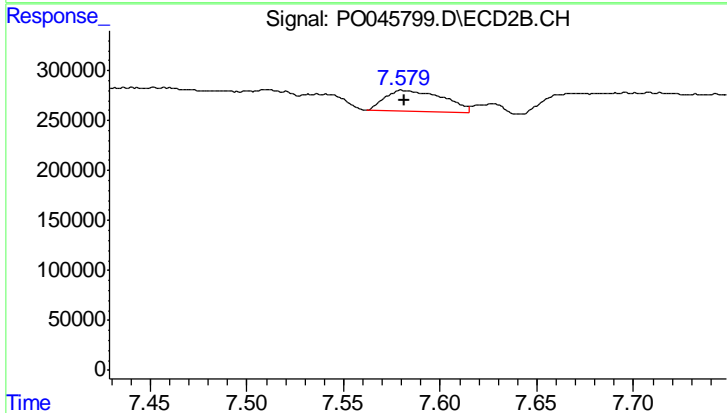
#41 AR-1268-1

R.T.: 7.511 min  
 Delta R.T.: -0.007 min  
 Response: 537015  
 Conc: 45.79 ng/ml



#42 AR-1268-2

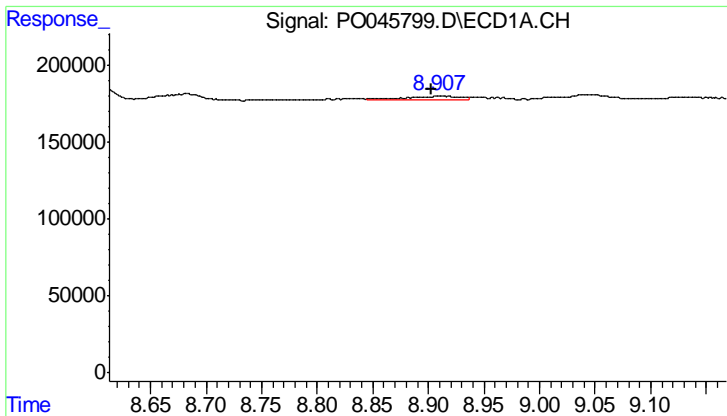
R.T.: 8.683 min  
 Delta R.T.: 0.004 min  
 Response: 125816  
 Conc: 6.12 ng/ml



#42 AR-1268-2

R.T.: 7.580 min  
 Delta R.T.: -0.001 min  
 Response: 455506  
 Conc: 43.66 ng/ml

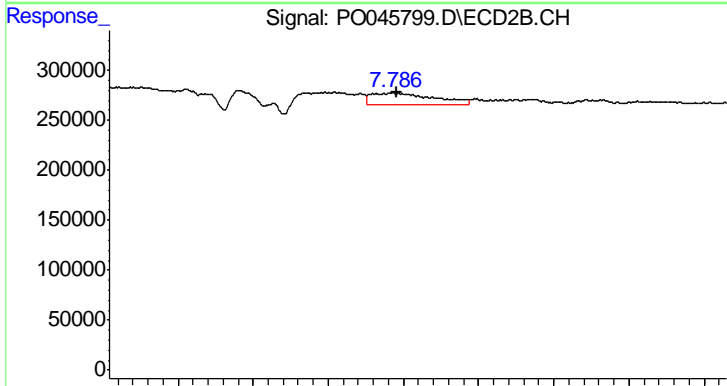




#43 AR-1268-3

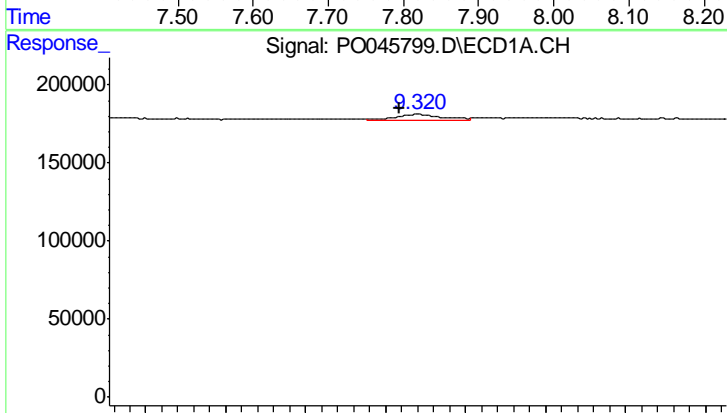
R.T.: 8.908 min  
 Delta R.T.: 0.006 min  
 Response: 88066  
 Conc: 5.00 ng/ml

Instrument :  
 ECD\_O  
 ClientSampled :



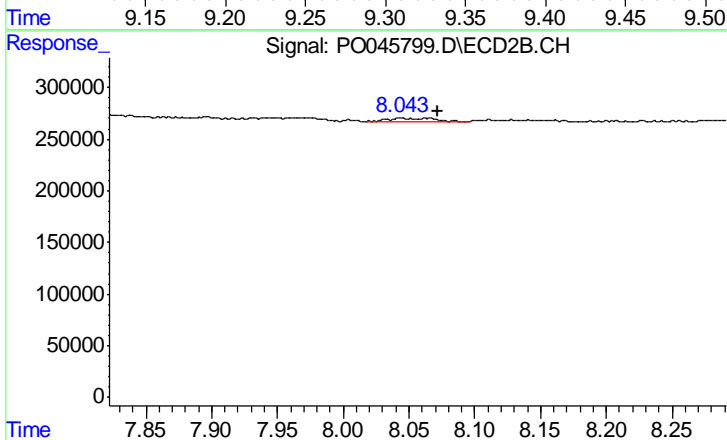
#43 AR-1268-3

R.T.: 7.785 min  
 Delta R.T.: -0.006 min  
 Response: 656374  
 Conc: 75.44 ng/ml



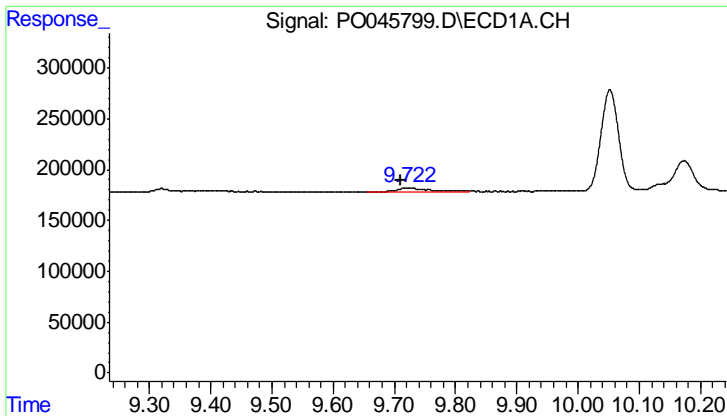
#44 AR-1268-4

R.T.: 9.320 min  
 Delta R.T.: 0.011 min  
 Response: 73872  
 Conc: 9.83 ng/ml



#44 AR-1268-4

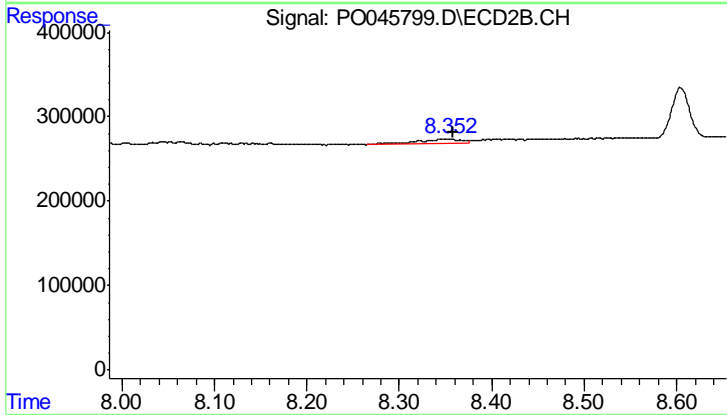
R.T.: 8.044 min  
 Delta R.T.: -0.027 min  
 Response: 111103  
 Conc: 29.02 ng/ml



#45 AR-1268-5

R.T.: 9.722 min  
Delta R.T.: 0.011 min  
Response: 152760  
Conc: 2.92 ng/ml

Instrument :  
ECD\_O  
ClientSampleId :



#45 AR-1268-5

R.T.: 8.353 min  
Delta R.T.: -0.006 min  
Response: 170094  
Conc: 7.56 ng/ml