

Data Path : Z:\pestpcbsrv\HPCHEM1\ECD_O\Data\PO061418\
 Data File : PO045803.D
 Signal(s) : Signal #1: ECD1A.CH Signal #2: ECD2B.CH
 Acq On : 15 Jun 2018 00:59
 Operator : SM/UA
 Sample : J3493-01MSD
 Misc :
 ALS Vial : 21 Sample Multiplier: 1

Instrument :
 ECD_O
 ClientSampled :

Integration File signal 1: autoint1.e
 Integration File signal 2: autoint2.e
 Quant Time: Jun 15 08:30:07 2018
 Quant Method : Z:\pestpcbsrv\HPCHEM1\ECD_O\methods\PO061418.M
 Quant Title : GC EXTRACTABLES
 QLast Update : Fri Jun 15 08:20:04 2018
 Response via : Initial Calibration
 Integrator: ChemStation 6890 Scale Mode: Small noise peaks clipped

Volume Inj. : 2 µl
 Signal #1 Phase : ZB-MR1 Signal #2 Phase: ZB-MR2
 Signal #1 Info : 30Mx0.32mmx 0.50µ Signal #2 Info : 30M x 0.32mm x 0.25µm

Compound	RT#1	RT#2	Resp#1	Resp#2	ng/ml	ng/ml

System Monitoring Compounds						
1) SA Tetrachlo...	4.390	3.623	5410115	2544498	27.575	27.150
2) SA Decachlor...	10.054	8.604	3104213	1343914	15.401	17.013
Target Compounds						
3) L1 AR-1016-1	5.283	4.484	1725270	1081342	330.646	402.885
4) L1 AR-1016-2	5.632	4.939	2207522	773607	328.386	357.501
5) L1 AR-1016-3	5.729	4.980	1893421	863050	338.385	335.809
6) L1 AR-1016-4	6.162	5.151	1309701	905553	222.129	307.810 #
7) L1 AR-1016-5	6.397	5.501	1197783	912047	221.938	331.521 #
8) L2 AR-1221-1	4.589	3.833	221895	130197	83.340	90.010
9) L2 AR-1221-2	4.681	3.921	311928	185217	157.340	176.802
10) L2 AR-1221-3	4.756	3.997	1242394	646562	202.992	203.263
11) L3 AR-1232-1	5.090	3.997	1725243	646562	729.815	303.246 #
12) L3 AR-1232-2	5.547	4.704	2397621	1348225	704.274	835.151
13) L3 AR-1232-3	5.570	4.723	3399677	1747788	696.422	735.889
14) L3 AR-1232-4	5.632	4.778	2207522	1337766	690.957	817.449
15) L3 AR-1232-5	5.729	4.898	1893421	970630	729.088	780.492
16) L4 AR-1242-1	5.090	4.484	1725243	1081342	440.626	533.338
17) L4 AR-1242-2	5.570	4.723	3399677	1747788	430.484	465.837
18) L4 AR-1242-3	5.729	4.898	1893421	970630	448.076	476.924
19) L4 AR-1242-4	6.022	4.980	1614338	863050	385.405	453.148
20) L4 AR-1242-5	6.162	5.151	1309701	905553	274.277	437.354 #
21) L5 AR-1248-1	6.022	5.151	1614338	905553	226.063	249.689
22) L5 AR-1248-2	6.162	5.299	1309701	1043551	205.511	318.390 #
23) L5 AR-1248-3	6.422	5.501	263058	912047	31.204	173.993 #
24) L5 AR-1248-4	6.461	5.544	267236	306422	32.624	79.204 #
25) L5 AR-1248-5	6.652	6.064	108116	1974198	19.438	742.282 #
26) L6 AR-1254-1	6.614	5.501	1317876	912047	96.424	152.219 #
27) L6 AR-1254-2	6.880	5.647	945937	1086186	111.466	205.358 #
28) L6 AR-1254-3	6.978	6.064	937667	1974198	62.837	231.418 #
29) L6 AR-1254-4	7.262	6.275	399567	360515	35.064	63.394 #
30) L6 AR-1254-5	7.525	6.598	1348481	319727	157.481	79.587 #
31) L7 AR-1260-1	7.143	6.179	2488932	1870466	234.110	337.142 #
32) L7 AR-1260-2	7.397	6.365	2919103	2136655	231.824	307.776 #
33) L7 AR-1260-3	7.677	6.693	3428127	1879310	227.541	259.592
34) L7 AR-1260-4	8.292	7.229	3708842	2323947	177.423	208.276
35) L7 AR-1260-5	8.608	7.575	2463893	1606959	179.746	201.341
36) L8 AR-1262-1	7.143	6.365	2488932	2136655	249.768	356.477 #
37) L8 AR-1262-2	7.397	6.519	2919103	1758151	250.658	302.413
38) L8 AR-1262-3	7.677	6.730	3428127	1097947	319.575	137.636 #

Data Path : Z:\pestpcbsrv\HPCHEM1\ECD_O\Data\PO061418\
 Data File : PO045803.D
 Signal(s) : Signal #1: ECD1A.CH Signal #2: ECD2B.CH
 Acq On : 15 Jun 2018 00:59
 Operator : SM/UA
 Sample : J3493-01MSD
 Misc :
 ALS Vial : 21 Sample Multiplier: 1

Instrument :
 ECD_O
 ClientSampleId :

Integration File signal 1: autoint1.e
 Integration File signal 2: autoint2.e
 Quant Time: Jun 15 08:30:07 2018
 Quant Method : Z:\pestpcbsrv\HPCHEM1\ECD_O\methods\PO061418.M
 Quant Title : GC EXTRACTABLES
 QLast Update : Fri Jun 15 08:20:04 2018
 Response via : Initial Calibration
 Integrator: ChemStation 6890 Scale Mode: Small noise peaks clipped

Volume Inj. : 2 µl
 Signal #1 Phase : ZB-MR1 Signal #2 Phase: ZB-MR2
 Signal #1 Info : 30Mx0.32mmx 0.50µ Signal #2 Info : 30M x 0.32mm x 0.25µm

	Compound	RT#1	RT#2	Resp#1	Resp#2	ng/ml	ng/ml
39)	L8 AR-1262-4	7.979	6.989	2149306	1042101	145.412	143.248
40)	L8 AR-1262-5	8.292	7.229	3708842	2323947	137.415	170.955
41)	L9 AR-1268-1	8.608	7.513	2463893	520854	91.357	40.751 #
42)	L9 AR-1268-2	8.684	7.575	636839	1606959	25.102	138.837 #
43)	L9 AR-1268-3	8.910	7.782	91112	99007	4.103	10.090 #
44)	L9 AR-1268-4	9.320	8.067	984099	510017	102.325	115.238
45)	L9 AR-1268-5	9.723	8.352	364810	201029	5.490	7.970 #

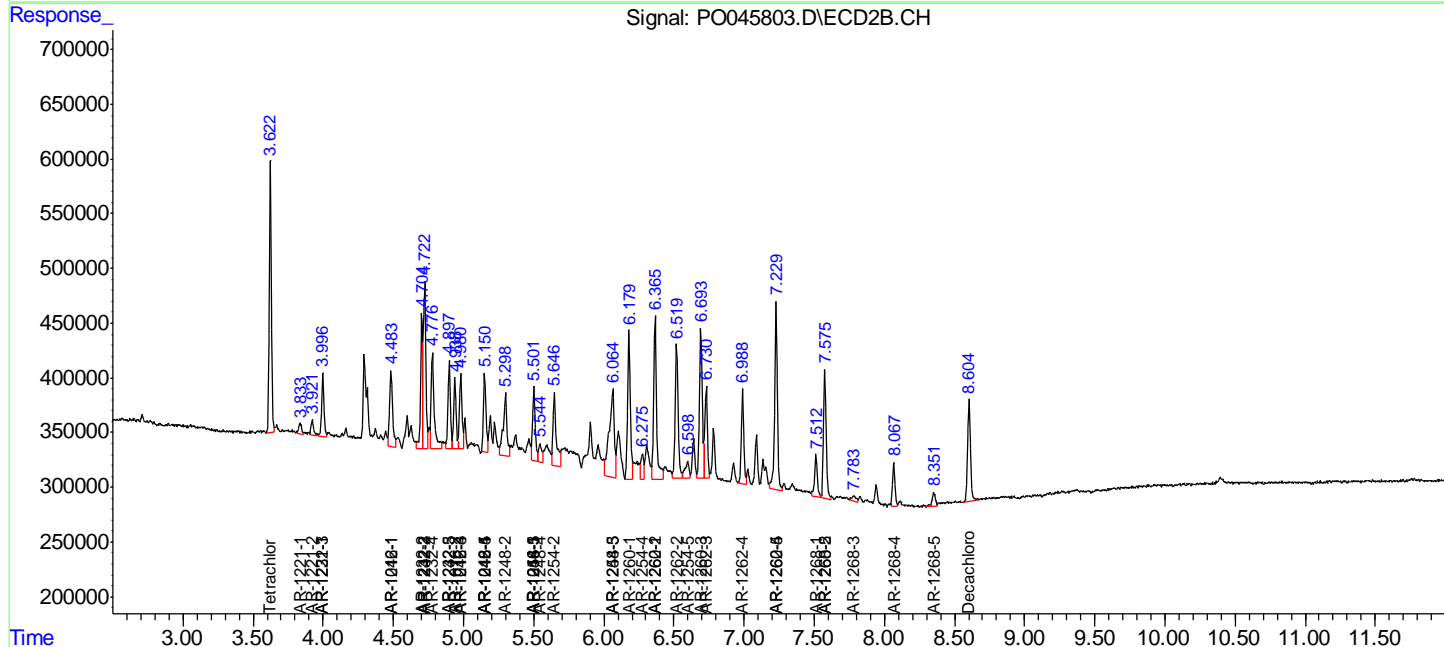
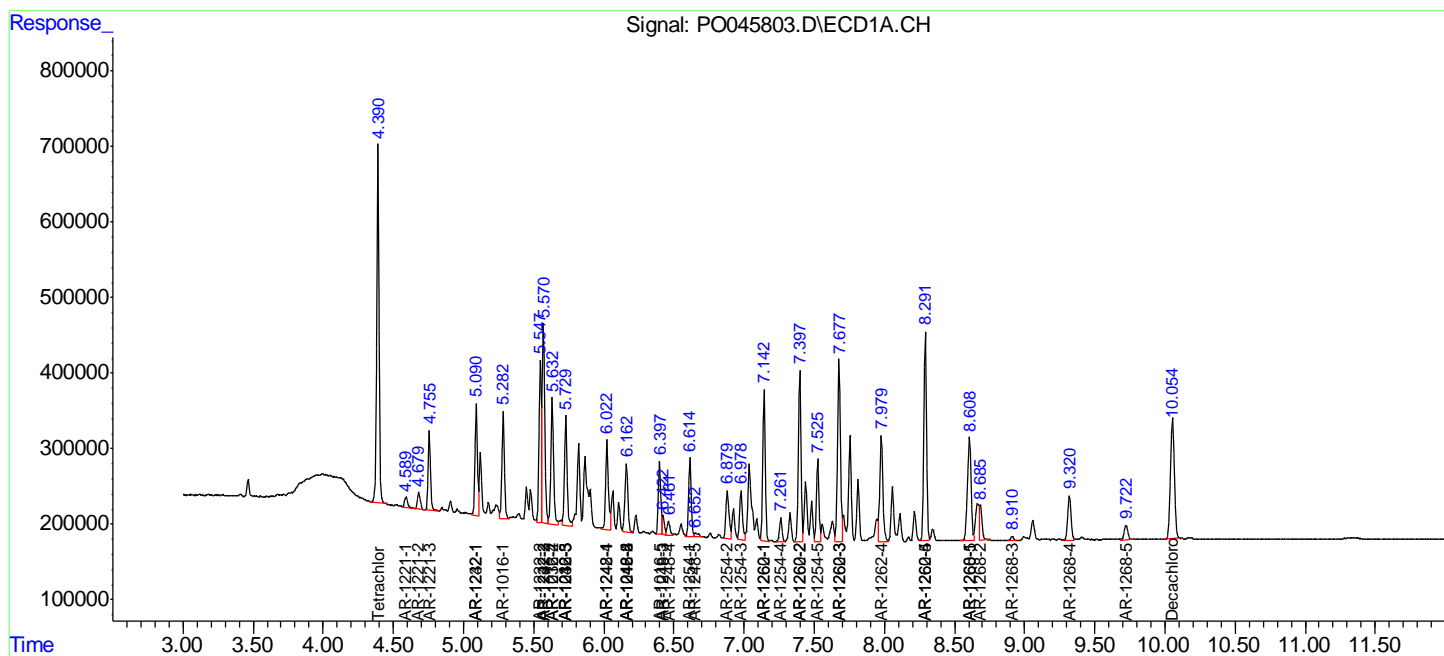
(f)=RT Delta > 1/2 Window (#)=Amounts differ by > 25% (m)=manual int.

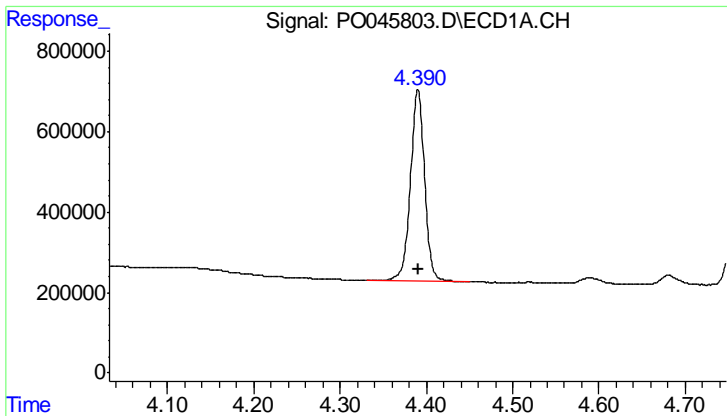
Data Path : Z:\pestpcbsrv\HPCHEM1\ECD_O\Data\PO061418\
 Data File : PO045803.D
 Signal(s) : Signal #1: ECD1A.CH Signal #2: ECD2B.CH
 Acq On : 15 Jun 2018 00:59
 Operator : SM/UA
 Sample : J3493-01MSD
 Misc :
 ALS Vial : 21 Sample Multiplier: 1

Instrument :
 ECD_O
 ClientSampled :

Integration File signal 1: autoint1.e
 Integration File signal 2: autoint2.e
 Quant Time: Jun 15 08:30:07 2018
 Quant Method : Z:\pestpcbsrv\HPCHEM1\ECD_O\methods\PO061418.M
 Quant Title : GC EXTRACTABLES
 QLast Update : Fri Jun 15 08:20:04 2018
 Response via : Initial Calibration
 Integrator: ChemStation 6890 Scale Mode: Small noise peaks clipped

Volume Inj. : 2 µl
 Signal #1 Phase : ZB-MR1 Signal #2 Phase: ZB-MR2
 Signal #1 Info : 30Mx0.32mmx 0.50µ Signal #2 Info : 30M x 0.32mm x 0.25µm

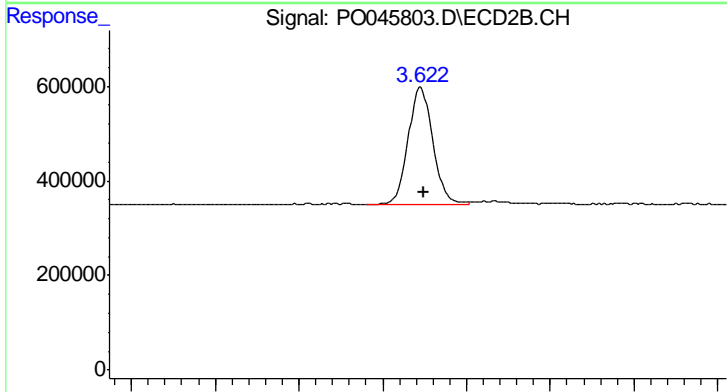




#1 Tetrachloro-m-xylene

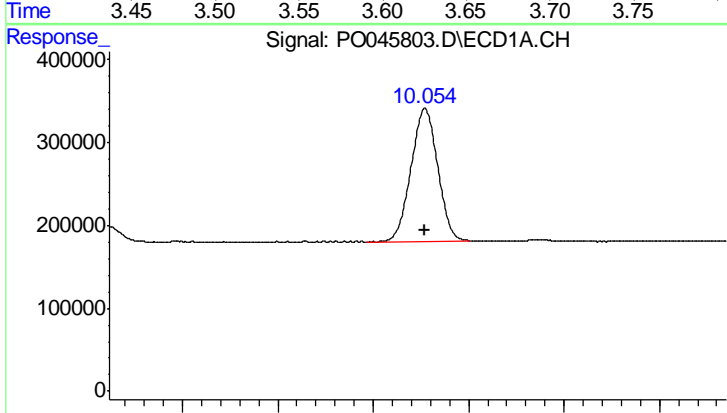
R.T.: 4.390 min
 Delta R.T.: 0.000 min
 Response: 5410115
 Conc: 27.57 ng/ml

Instrument :
 ECD_O
 ClientSampled :



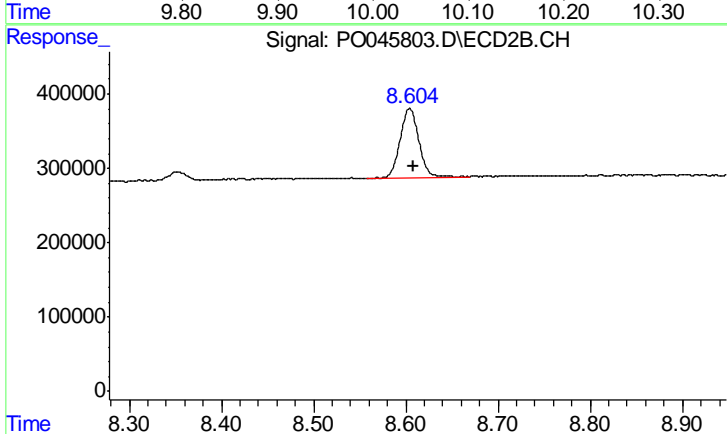
#1 Tetrachloro-m-xylene

R.T.: 3.623 min
 Delta R.T.: -0.002 min
 Response: 2544498
 Conc: 27.15 ng/ml



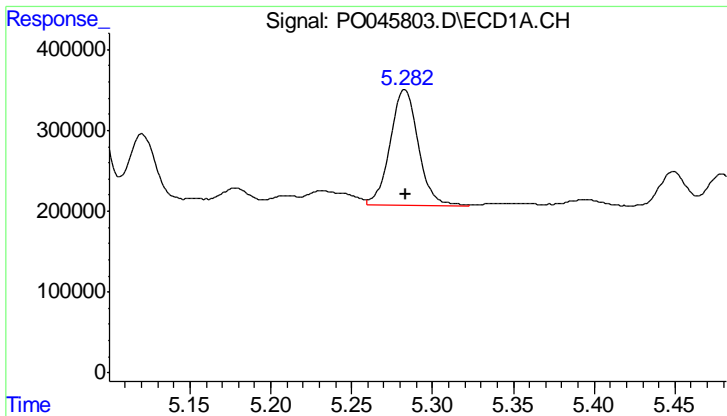
#2 Decachlorobiphenyl

R.T.: 10.054 min
 Delta R.T.: 0.000 min
 Response: 3104213
 Conc: 15.40 ng/ml



#2 Decachlorobiphenyl

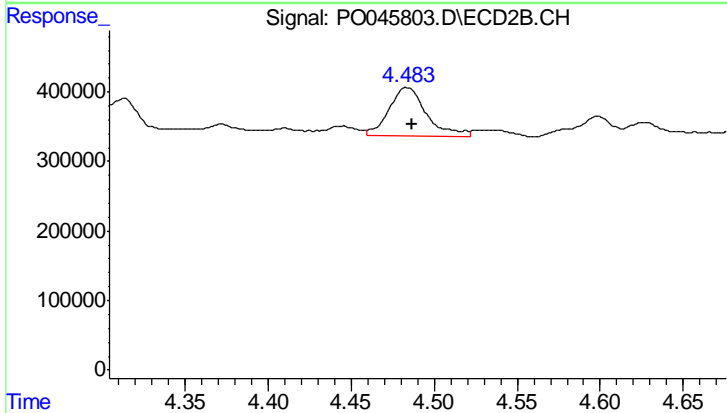
R.T.: 8.604 min
 Delta R.T.: -0.004 min
 Response: 1343914
 Conc: 17.01 ng/ml



#3 AR-1016-1

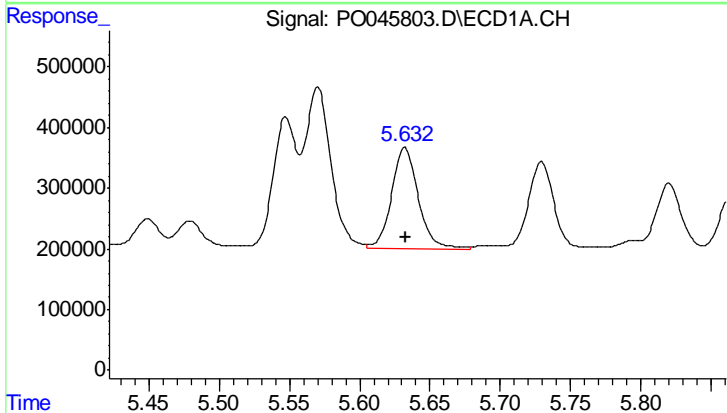
R.T.: 5.283 min
 Delta R.T.: 0.000 min
 Response: 1725270
 Conc: 330.65 ng/ml

Instrument :
 ECD_O
 ClientSampled :



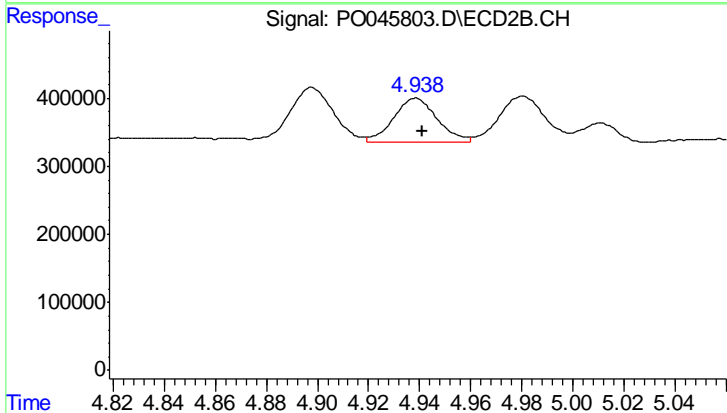
#3 AR-1016-1

R.T.: 4.484 min
 Delta R.T.: -0.003 min
 Response: 1081342
 Conc: 402.88 ng/ml



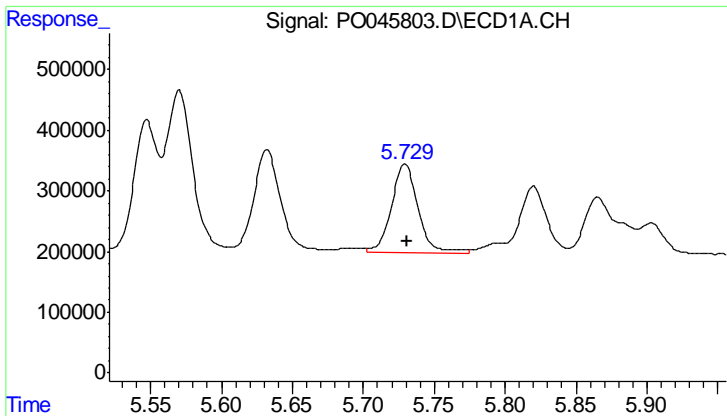
#4 AR-1016-2

R.T.: 5.632 min
 Delta R.T.: 0.000 min
 Response: 2207522
 Conc: 328.39 ng/ml



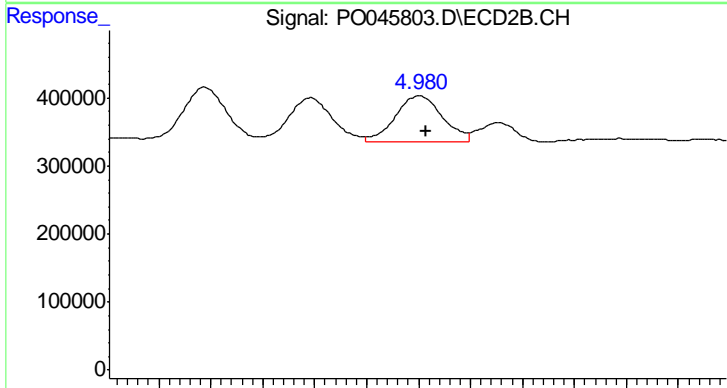
#4 AR-1016-2

R.T.: 4.939 min
 Delta R.T.: -0.002 min
 Response: 773607
 Conc: 357.50 ng/ml

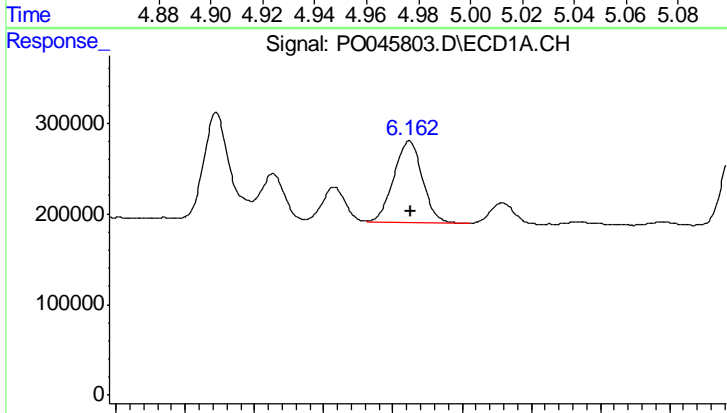


#5 AR-1016-3
 R.T.: 5.729 min
 Delta R.T.: -0.001 min
 Response: 1893421
 Conc: 338.38 ng/ml

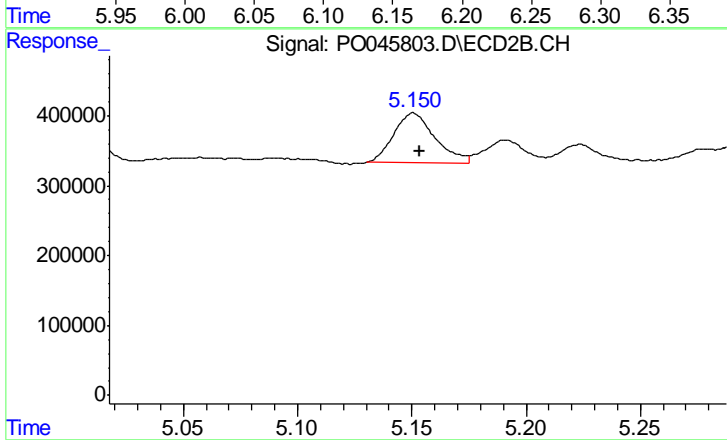
Instrument :
 ECD_O
 ClientSampleId :



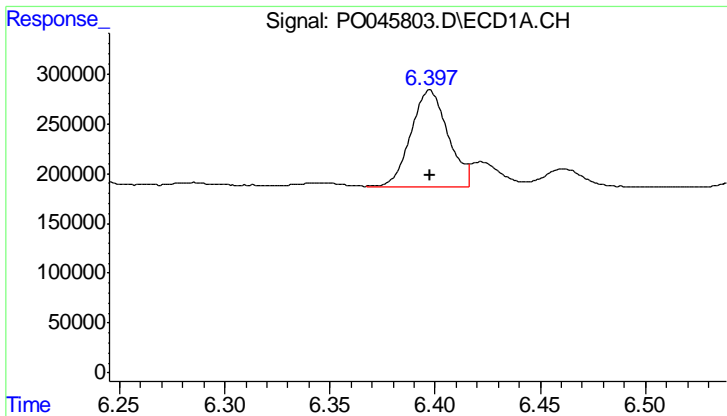
#5 AR-1016-3
 R.T.: 4.980 min
 Delta R.T.: -0.002 min
 Response: 863050
 Conc: 335.81 ng/ml



#6 AR-1016-4
 R.T.: 6.162 min
 Delta R.T.: -0.001 min
 Response: 1309701
 Conc: 222.13 ng/ml



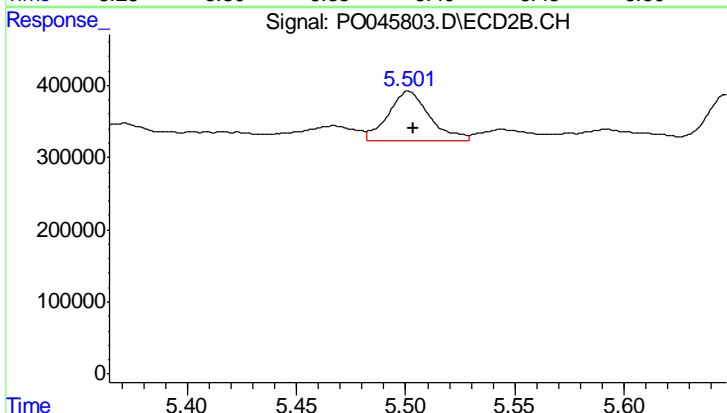
#6 AR-1016-4
 R.T.: 5.151 min
 Delta R.T.: -0.003 min
 Response: 905553
 Conc: 307.81 ng/ml



#7 AR-1016-5

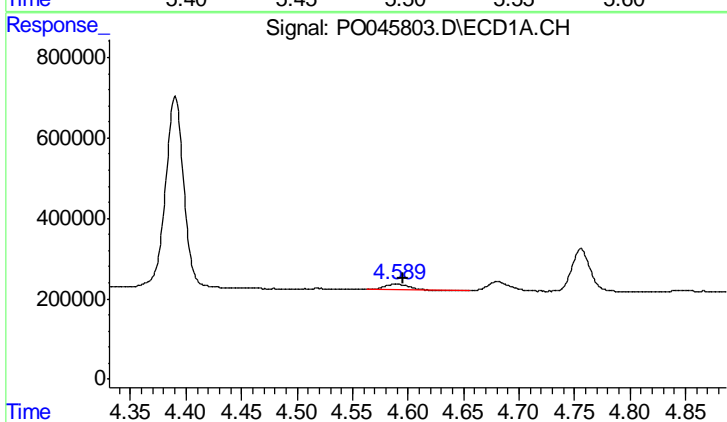
R.T.: 6.397 min
Delta R.T.: 0.000 min
Response: 1197783
Conc: 221.94 ng/ml

Instrument :
ECD_O
ClientSampled :



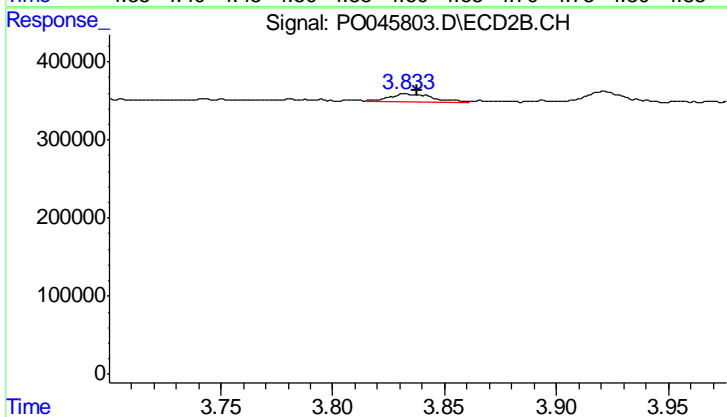
#7 AR-1016-5

R.T.: 5.501 min
Delta R.T.: -0.002 min
Response: 912047
Conc: 331.52 ng/ml



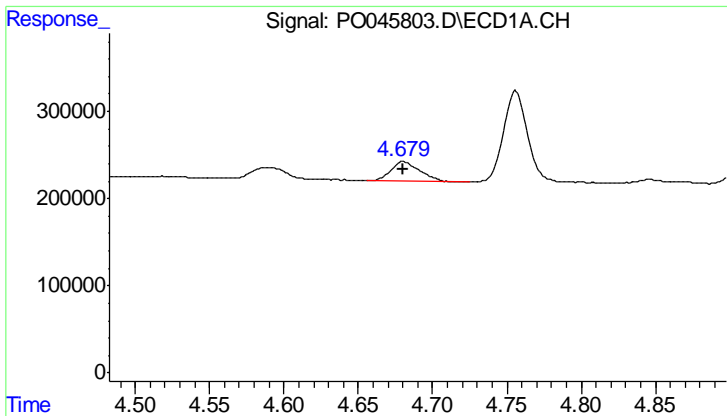
#8 AR-1221-1

R.T.: 4.589 min
Delta R.T.: -0.006 min
Response: 221895
Conc: 83.34 ng/ml



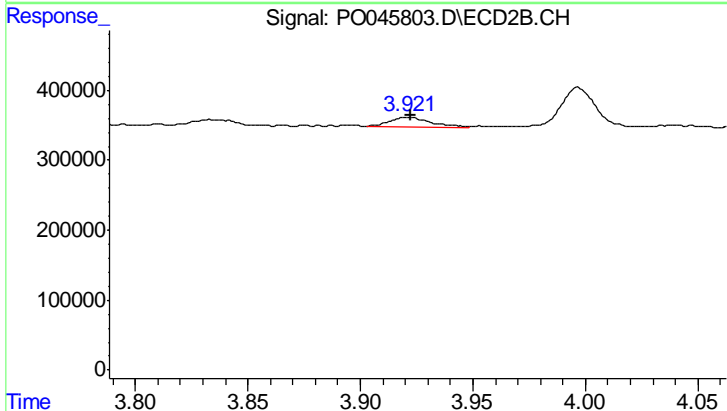
#8 AR-1221-1

R.T.: 3.833 min
Delta R.T.: -0.005 min
Response: 130197
Conc: 90.01 ng/ml

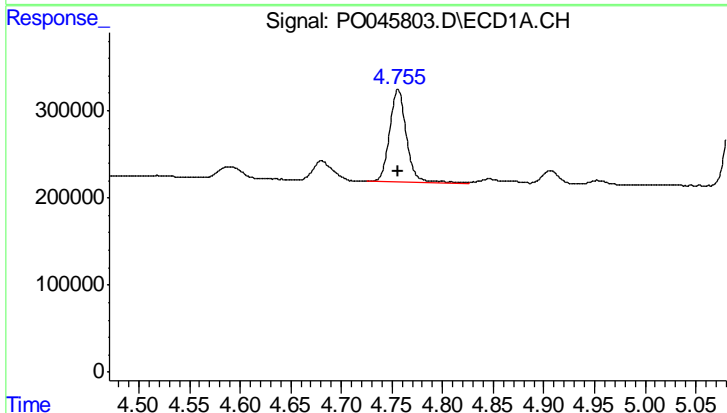


#9 AR-1221-2
 R.T.: 4.681 min
 Delta R.T.: 0.000 min
 Response: 311928
 Conc: 157.34 ng/ml

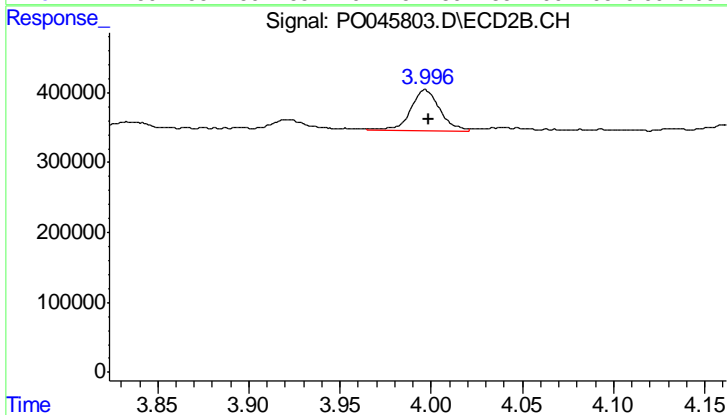
Instrument :
 ECD_O
 ClientSampled :



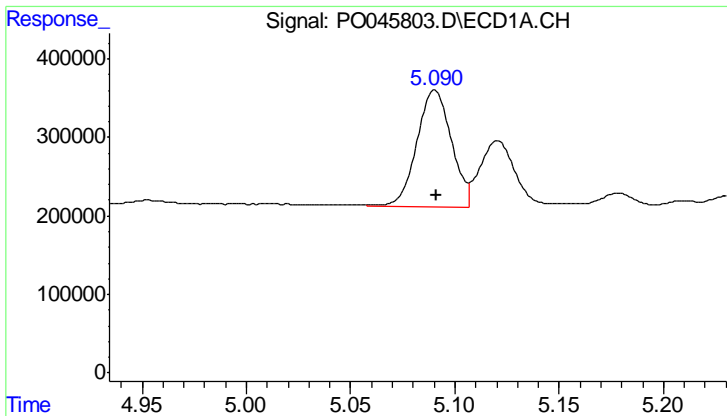
#9 AR-1221-2
 R.T.: 3.921 min
 Delta R.T.: -0.001 min
 Response: 185217
 Conc: 176.80 ng/ml



#10 AR-1221-3
 R.T.: 4.756 min
 Delta R.T.: 0.000 min
 Response: 1242394
 Conc: 202.99 ng/ml



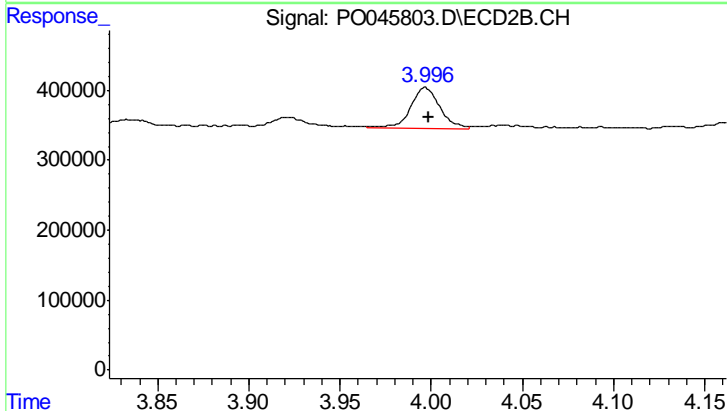
#10 AR-1221-3
 R.T.: 3.997 min
 Delta R.T.: -0.002 min
 Response: 646562
 Conc: 203.26 ng/ml



#11 AR-1232-1

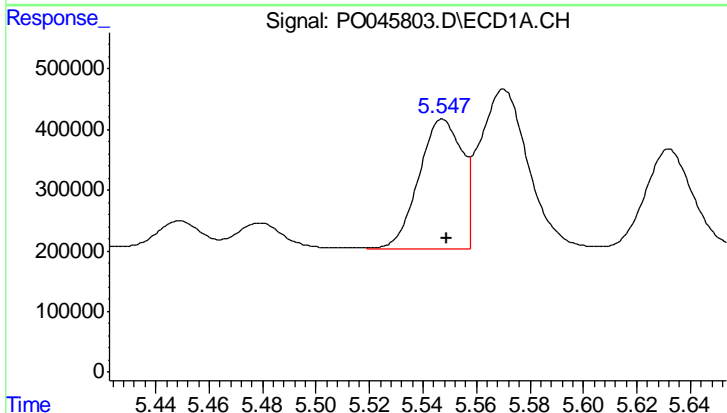
R.T.: 5.090 min
 Delta R.T.: 0.000 min
 Response: 1725243
 Conc: 729.81 ng/ml

Instrument :
 ECD_O
 ClientSampled :



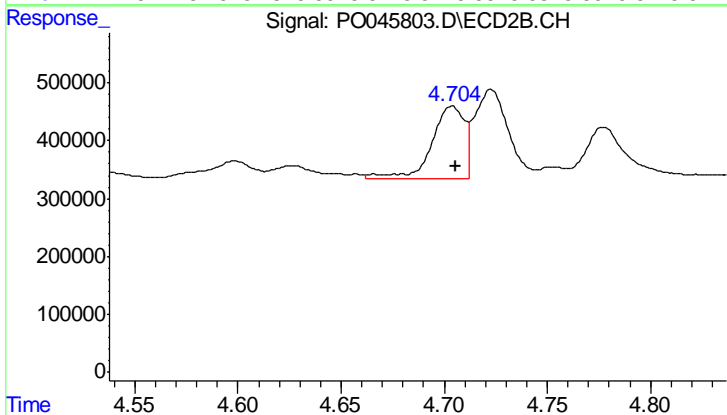
#11 AR-1232-1

R.T.: 3.997 min
 Delta R.T.: -0.002 min
 Response: 646562
 Conc: 303.25 ng/ml



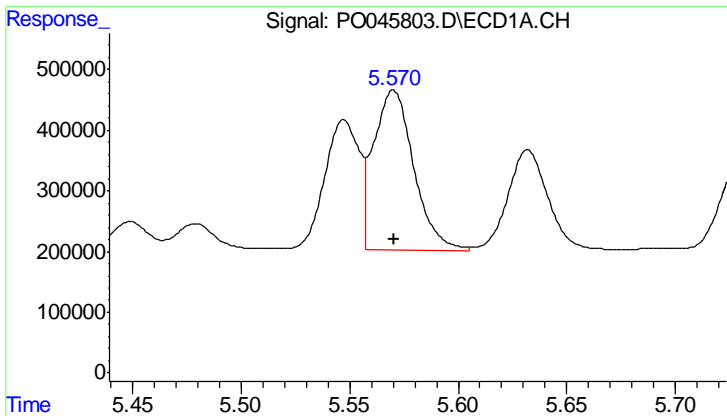
#12 AR-1232-2

R.T.: 5.547 min
 Delta R.T.: -0.001 min
 Response: 2397621
 Conc: 704.27 ng/ml



#12 AR-1232-2

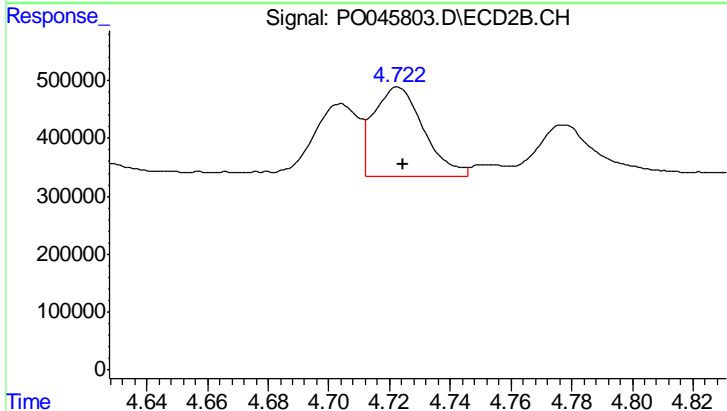
R.T.: 4.704 min
 Delta R.T.: -0.002 min
 Response: 1348225
 Conc: 835.15 ng/ml



#13 AR-1232-3

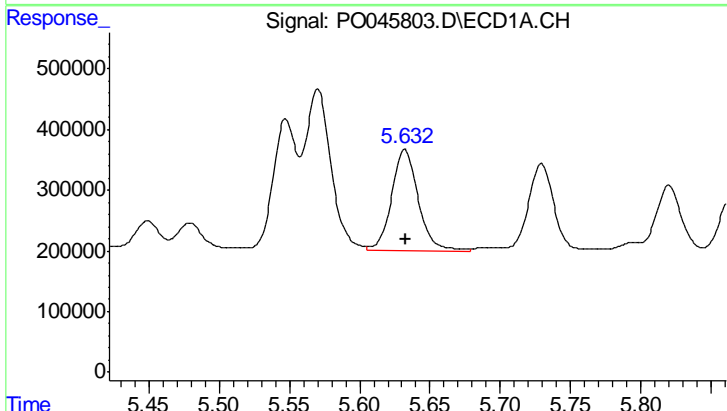
R.T.: 5.570 min
 Delta R.T.: 0.000 min
 Response: 3399677
 Conc: 696.42 ng/ml

Instrument :
 ECD_O
 ClientSampled :



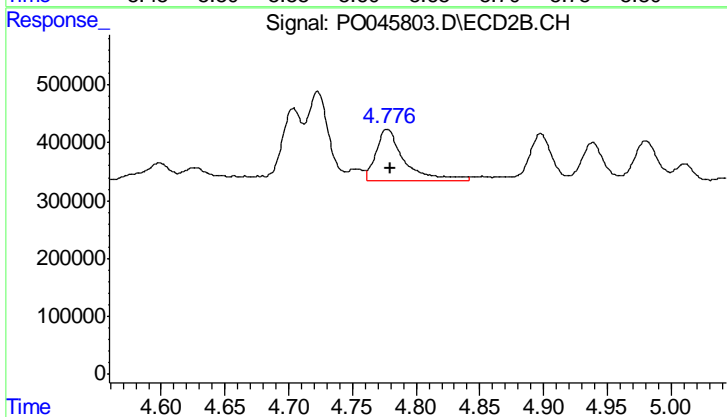
#13 AR-1232-3

R.T.: 4.723 min
 Delta R.T.: -0.002 min
 Response: 1747788
 Conc: 735.89 ng/ml



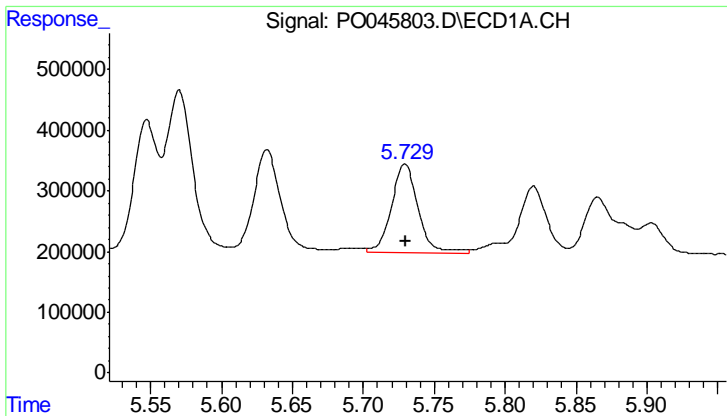
#14 AR-1232-4

R.T.: 5.632 min
 Delta R.T.: 0.000 min
 Response: 2207522
 Conc: 690.96 ng/ml



#14 AR-1232-4

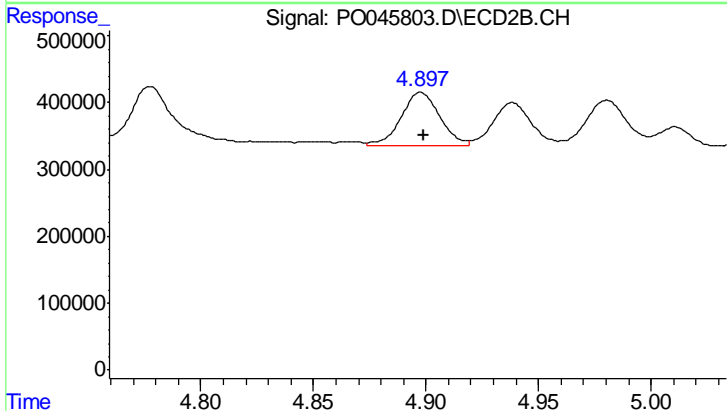
R.T.: 4.778 min
 Delta R.T.: -0.002 min
 Response: 1337766
 Conc: 817.45 ng/ml



#15 AR-1232-5

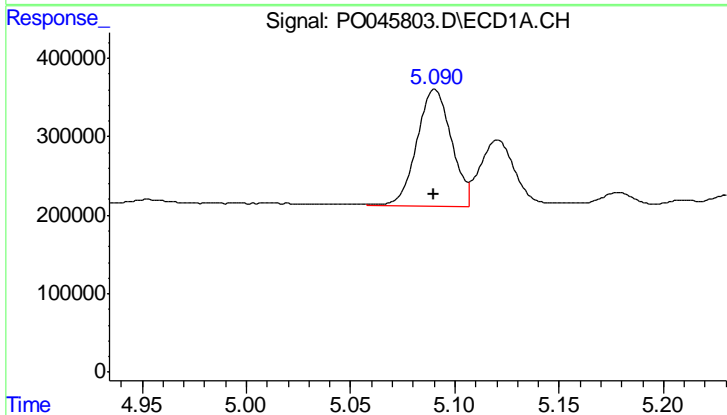
R.T.: 5.729 min
Delta R.T.: 0.000 min
Response: 1893421
Conc: 729.09 ng/ml

Instrument :
ECD_O
ClientSampled :



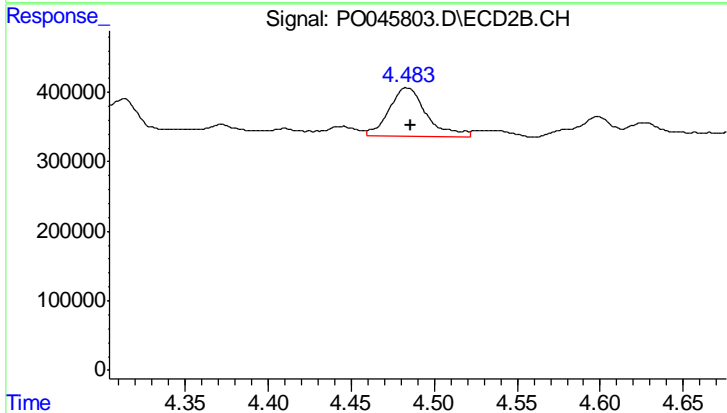
#15 AR-1232-5

R.T.: 4.898 min
Delta R.T.: -0.001 min
Response: 970630
Conc: 780.49 ng/ml



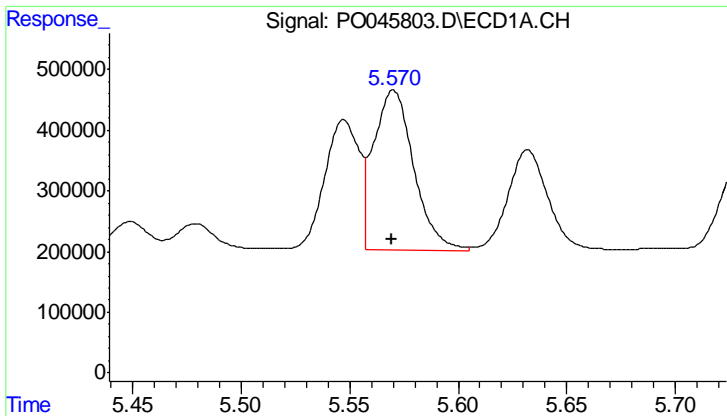
#16 AR-1242-1

R.T.: 5.090 min
Delta R.T.: 0.000 min
Response: 1725243
Conc: 440.63 ng/ml



#16 AR-1242-1

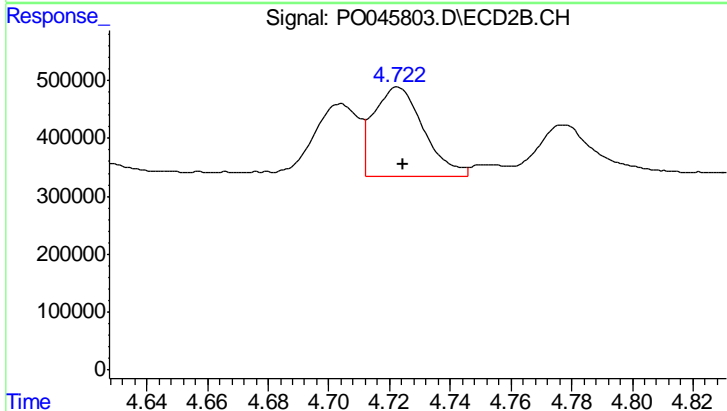
R.T.: 4.484 min
Delta R.T.: -0.002 min
Response: 1081342
Conc: 533.34 ng/ml



#17 AR-1242-2

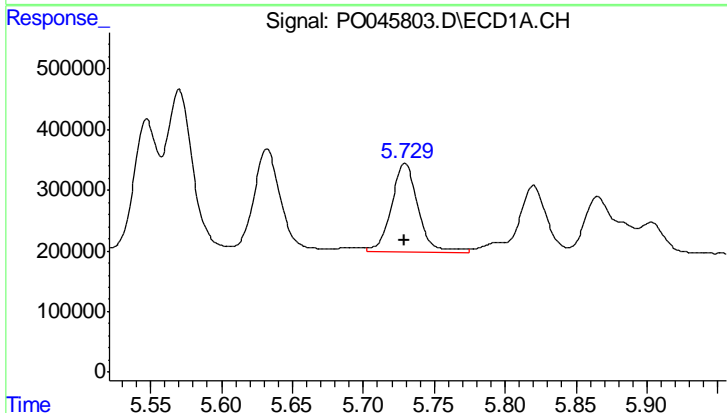
R.T.: 5.570 min
 Delta R.T.: 0.000 min
 Response: 3399677
 Conc: 430.48 ng/ml

Instrument :
 ECD_O
 ClientSampled :



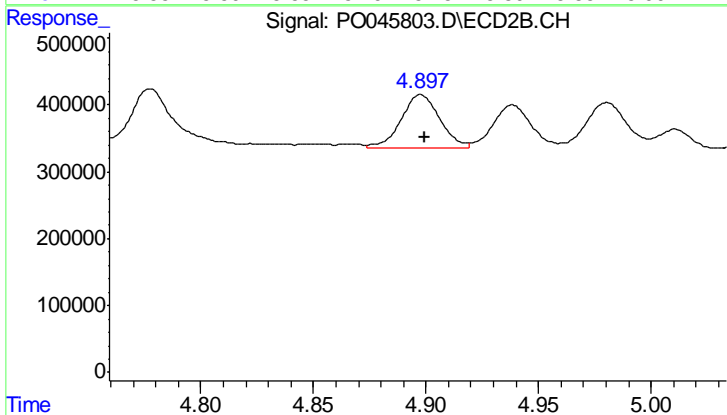
#17 AR-1242-2

R.T.: 4.723 min
 Delta R.T.: -0.002 min
 Response: 1747788
 Conc: 465.84 ng/ml



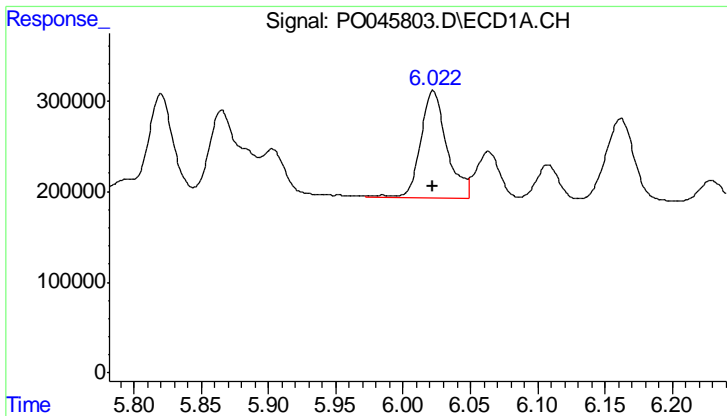
#18 AR-1242-3

R.T.: 5.729 min
 Delta R.T.: 0.000 min
 Response: 1893421
 Conc: 448.08 ng/ml



#18 AR-1242-3

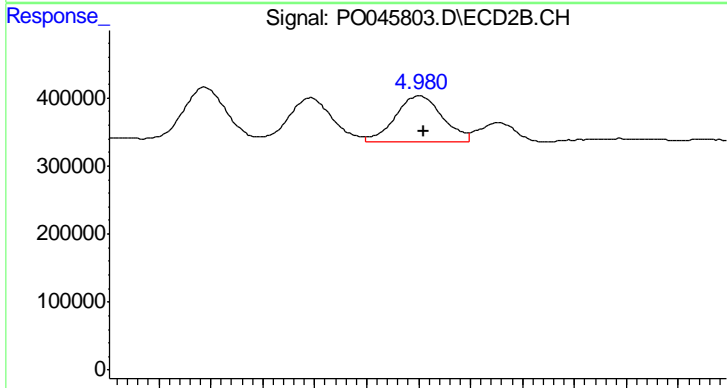
R.T.: 4.898 min
 Delta R.T.: -0.002 min
 Response: 970630
 Conc: 476.92 ng/ml



#19 AR-1242-4

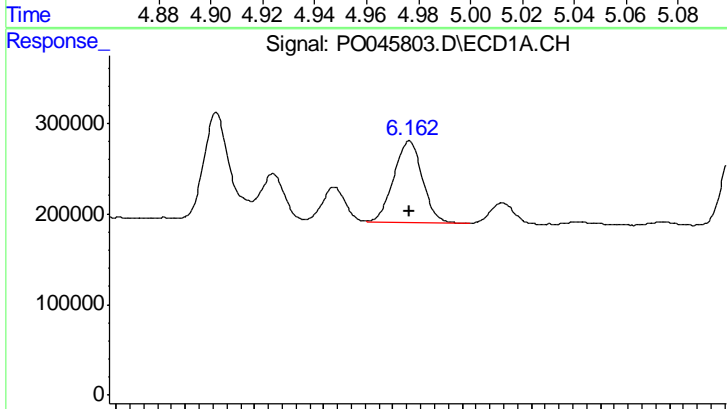
R.T.: 6.022 min
 Delta R.T.: 0.000 min
 Response: 1614338
 Conc: 385.41 ng/ml

Instrument :
 ECD_O
 ClientSampled :



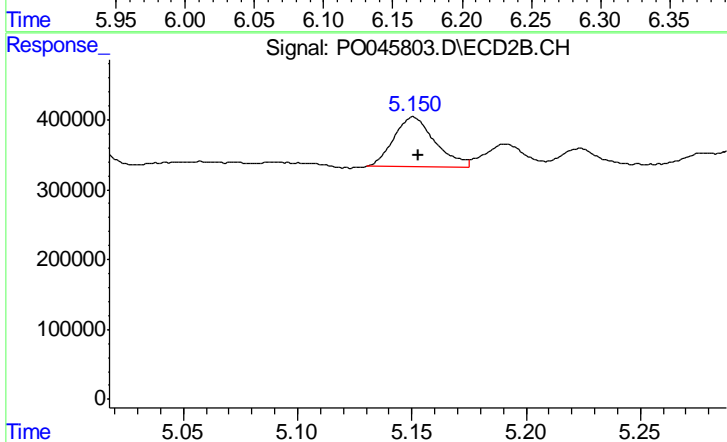
#19 AR-1242-4

R.T.: 4.980 min
 Delta R.T.: -0.002 min
 Response: 863050
 Conc: 453.15 ng/ml



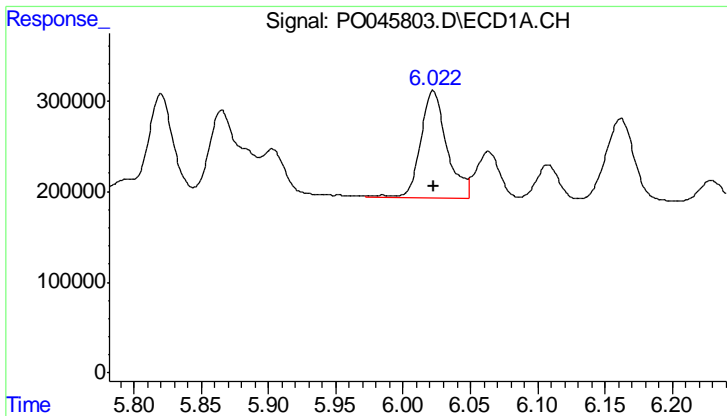
#20 AR-1242-5

R.T.: 6.162 min
 Delta R.T.: 0.000 min
 Response: 1309701
 Conc: 274.28 ng/ml



#20 AR-1242-5

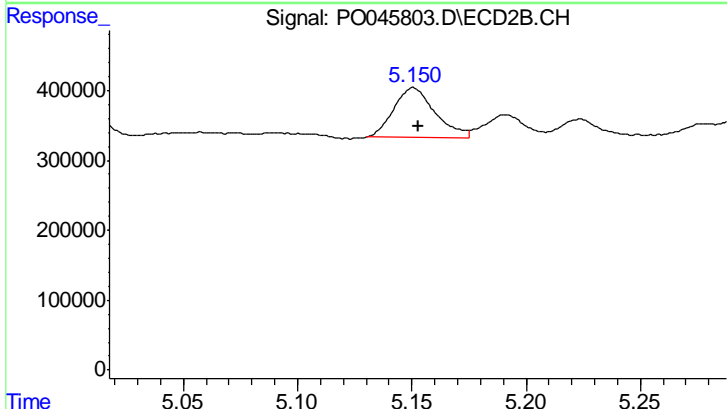
R.T.: 5.151 min
 Delta R.T.: -0.002 min
 Response: 905553
 Conc: 437.35 ng/ml



#21 AR-1248-1

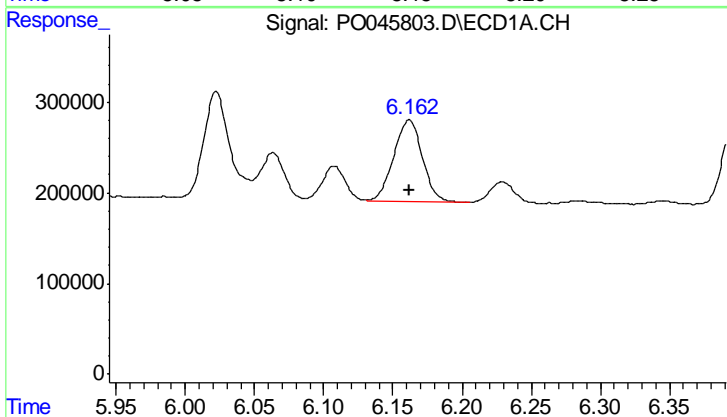
R.T.: 6.022 min
 Delta R.T.: 0.000 min
 Response: 1614338
 Conc: 226.06 ng/ml

Instrument :
 ECD_O
 ClientSampled :



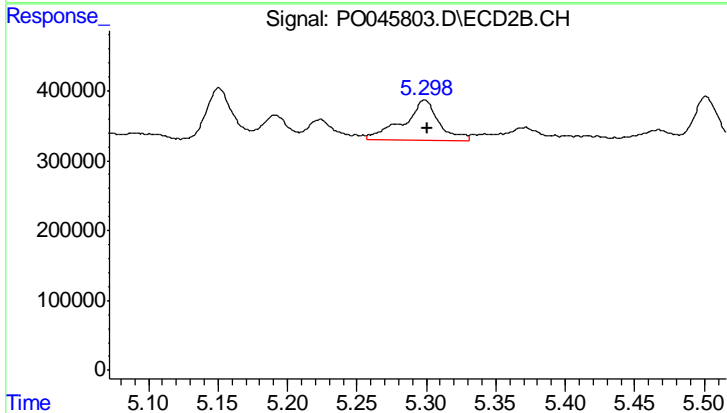
#21 AR-1248-1

R.T.: 5.151 min
 Delta R.T.: -0.002 min
 Response: 905553
 Conc: 249.69 ng/ml



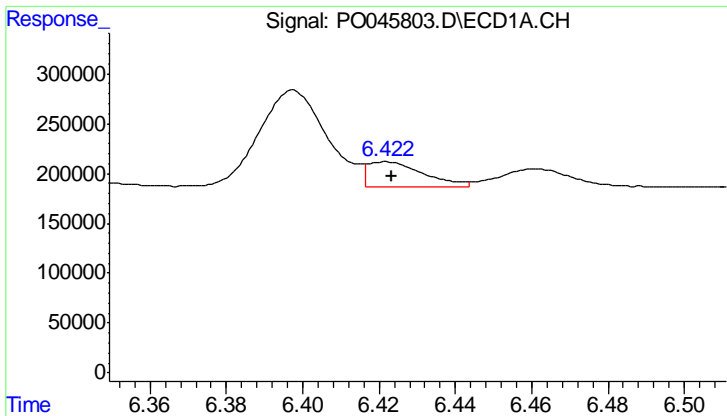
#22 AR-1248-2

R.T.: 6.162 min
 Delta R.T.: 0.000 min
 Response: 1309701
 Conc: 205.51 ng/ml



#22 AR-1248-2

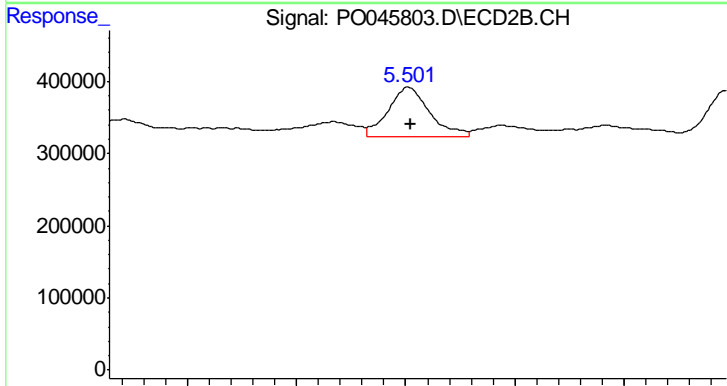
R.T.: 5.299 min
 Delta R.T.: -0.002 min
 Response: 1043551
 Conc: 318.39 ng/ml



#23 AR-1248-3

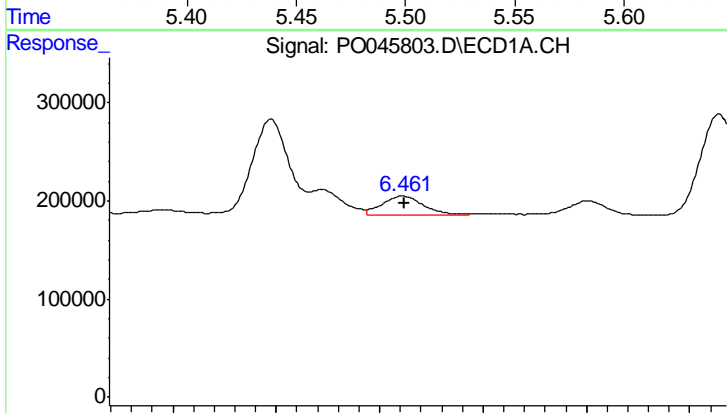
R.T.: 6.422 min
 Delta R.T.: -0.001 min
 Response: 263058
 Conc: 31.20 ng/ml

Instrument :
 ECD_O
 ClientSampled :



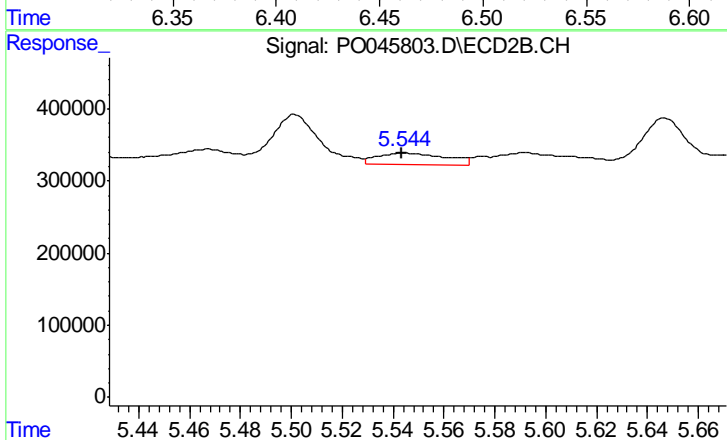
#23 AR-1248-3

R.T.: 5.501 min
 Delta R.T.: 0.000 min
 Response: 912047
 Conc: 173.99 ng/ml



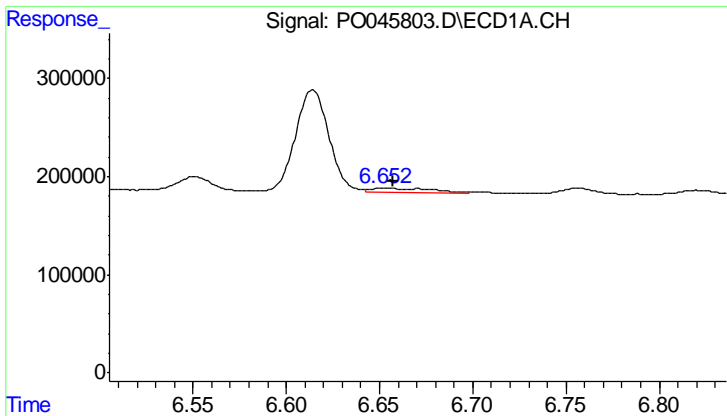
#24 AR-1248-4

R.T.: 6.461 min
 Delta R.T.: 0.000 min
 Response: 267236
 Conc: 32.62 ng/ml



#24 AR-1248-4

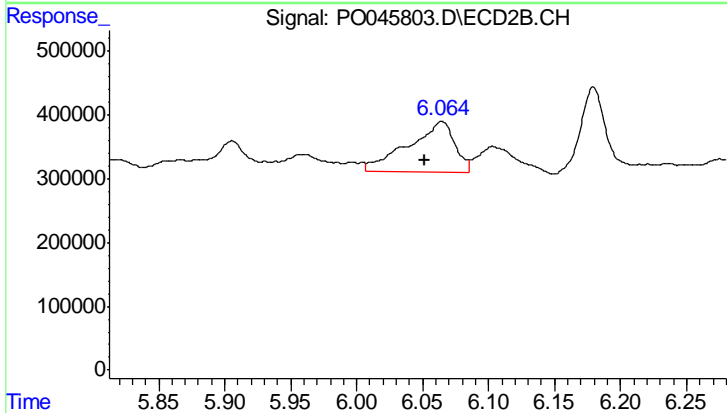
R.T.: 5.544 min
 Delta R.T.: 0.000 min
 Response: 306422
 Conc: 79.20 ng/ml



#25 AR-1248-5

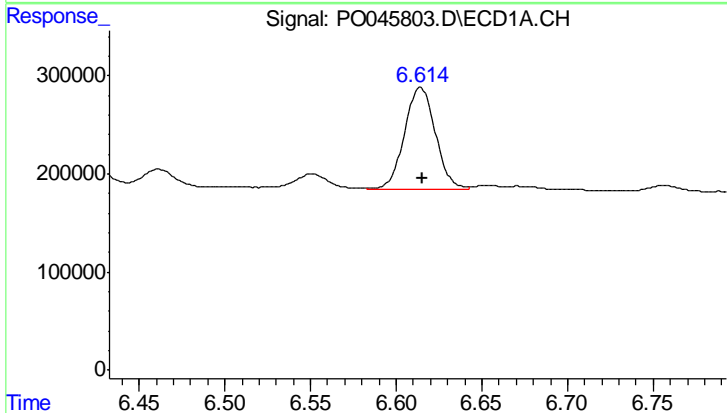
R.T.: 6.652 min
 Delta R.T.: -0.005 min
 Response: 108116
 Conc: 19.44 ng/ml

Instrument :
 ECD_O
 ClientSampled :



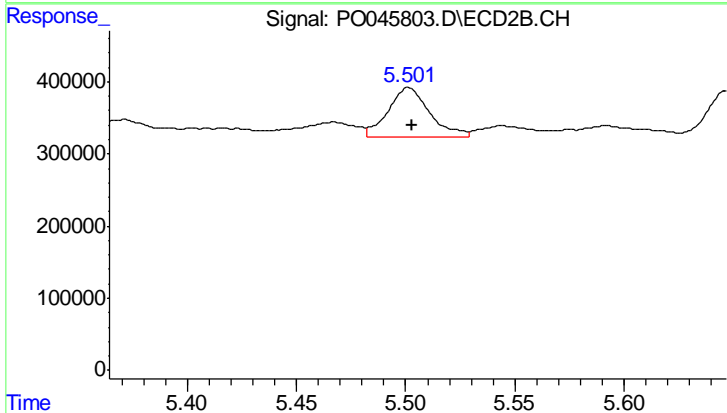
#25 AR-1248-5

R.T.: 6.064 min
 Delta R.T.: 0.013 min
 Response: 1974198
 Conc: 742.28 ng/ml



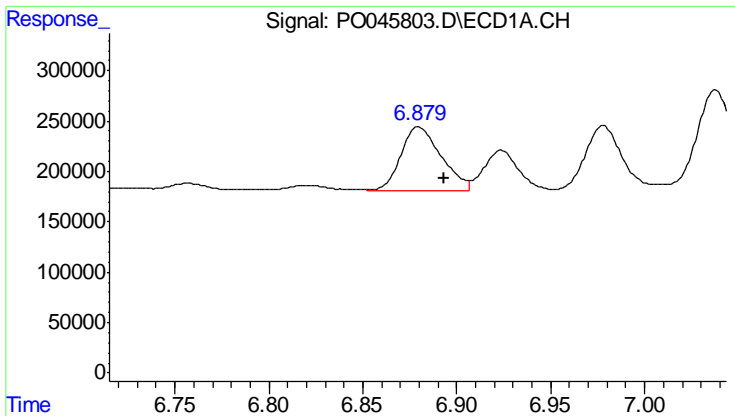
#26 AR-1254-1

R.T.: 6.614 min
 Delta R.T.: -0.001 min
 Response: 1317876
 Conc: 96.42 ng/ml



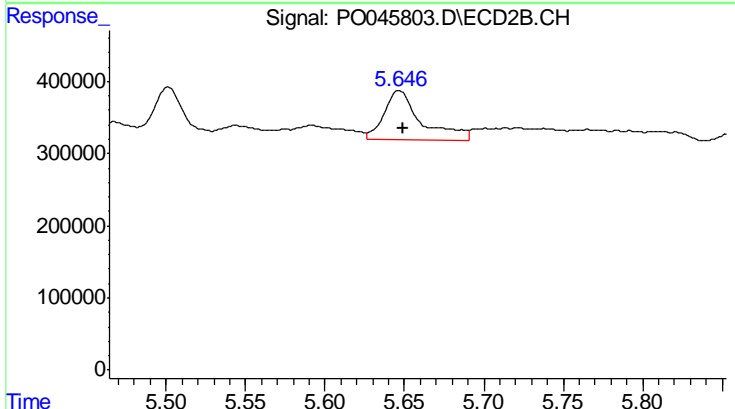
#26 AR-1254-1

R.T.: 5.501 min
 Delta R.T.: -0.002 min
 Response: 912047
 Conc: 152.22 ng/ml

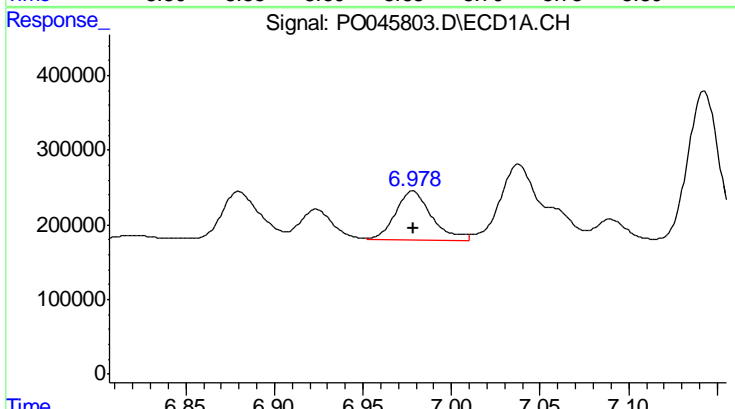


#27 AR-1254-2
 R.T.: 6.880 min
 Delta R.T.: -0.014 min
 Response: 945937
 Conc: 111.47 ng/ml

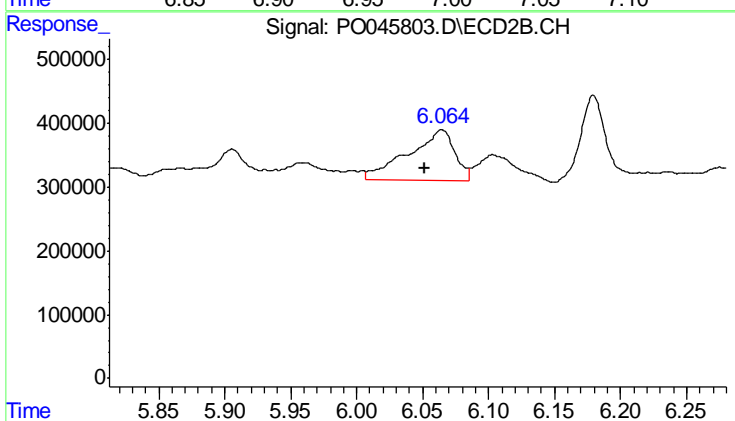
Instrument :
 ECD_O
 ClientSampled :



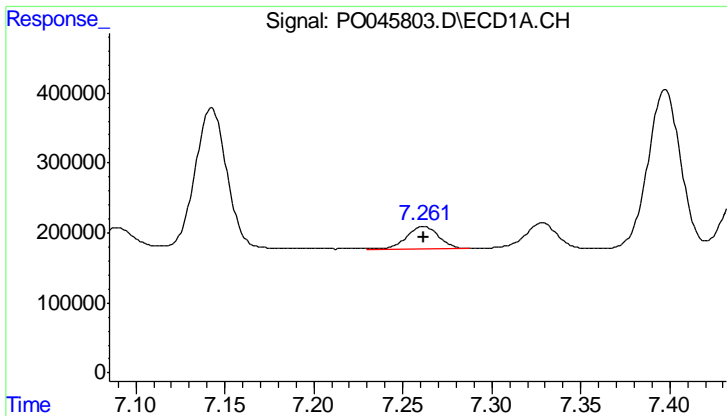
#27 AR-1254-2
 R.T.: 5.647 min
 Delta R.T.: -0.003 min
 Response: 1086186
 Conc: 205.36 ng/ml



#28 AR-1254-3
 R.T.: 6.978 min
 Delta R.T.: 0.000 min
 Response: 937667
 Conc: 62.84 ng/ml



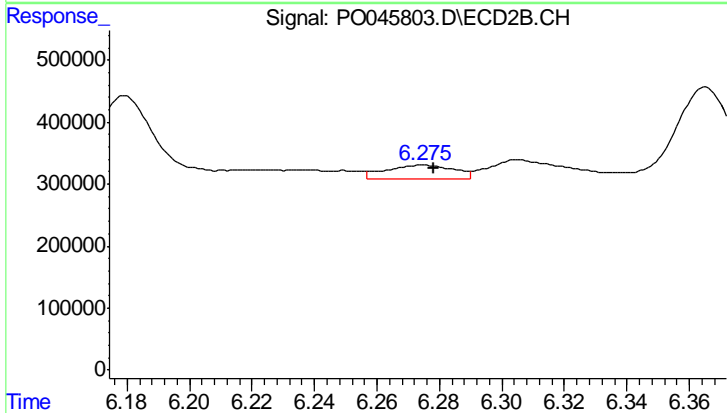
#28 AR-1254-3
 R.T.: 6.064 min
 Delta R.T.: 0.012 min
 Response: 1974198
 Conc: 231.42 ng/ml



#29 AR-1254-4

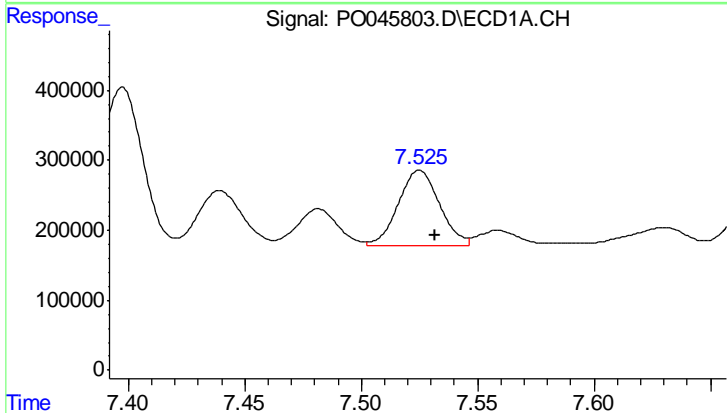
R.T.: 7.262 min
 Delta R.T.: 0.000 min
 Response: 399567
 Conc: 35.06 ng/ml

Instrument :
 ECD_O
 ClientSampleId :



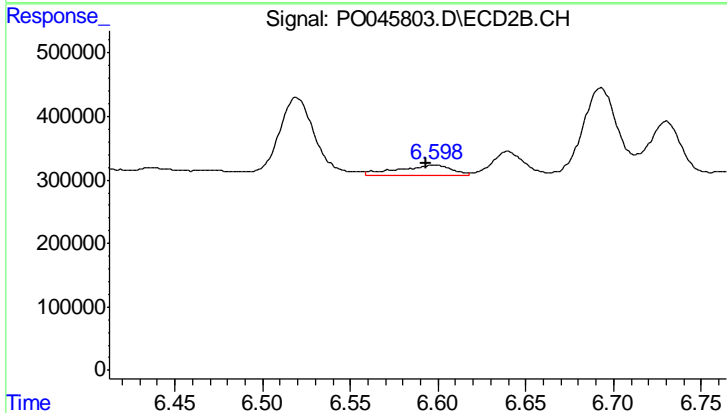
#29 AR-1254-4

R.T.: 6.275 min
 Delta R.T.: -0.003 min
 Response: 360515
 Conc: 63.39 ng/ml



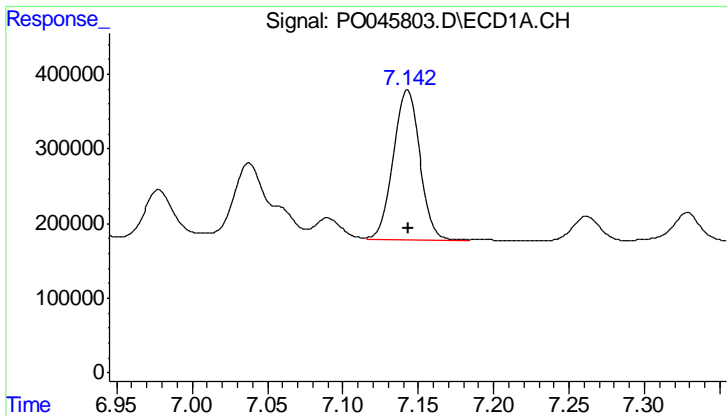
#30 AR-1254-5

R.T.: 7.525 min
 Delta R.T.: -0.007 min
 Response: 1348481
 Conc: 157.48 ng/ml



#30 AR-1254-5

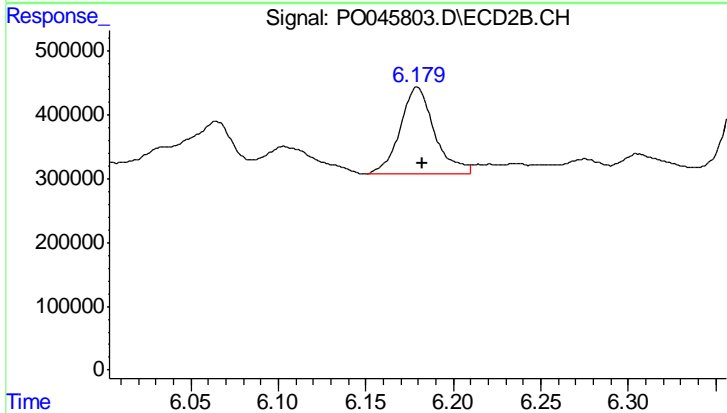
R.T.: 6.598 min
 Delta R.T.: 0.005 min
 Response: 319727
 Conc: 79.59 ng/ml



#31 AR-1260-1

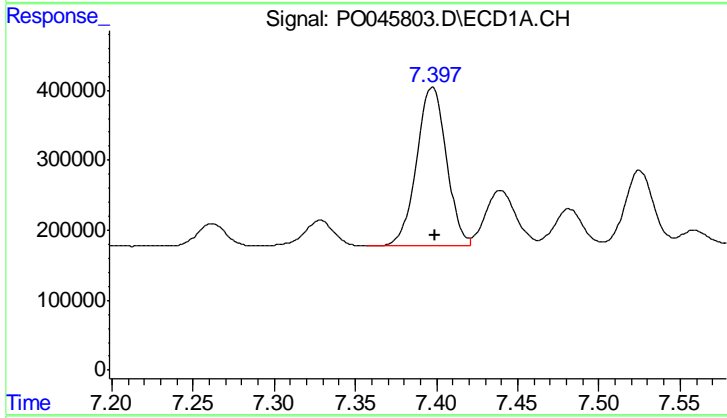
R.T.: 7.143 min
 Delta R.T.: -0.001 min
 Response: 2488932
 Conc: 234.11 ng/ml

Instrument :
 ECD_O
 ClientSampled :



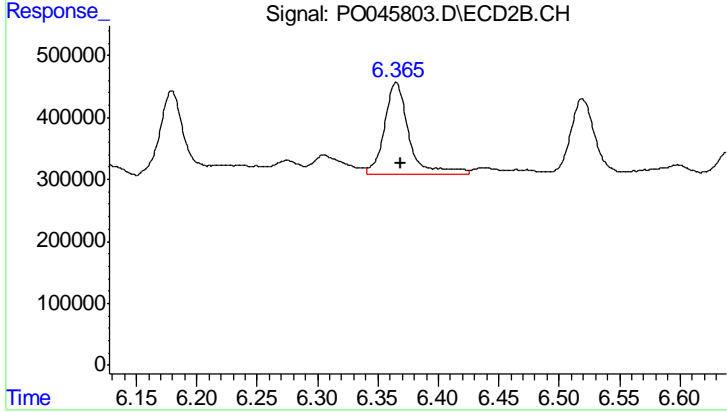
#31 AR-1260-1

R.T.: 6.179 min
 Delta R.T.: -0.003 min
 Response: 1870466
 Conc: 337.14 ng/ml



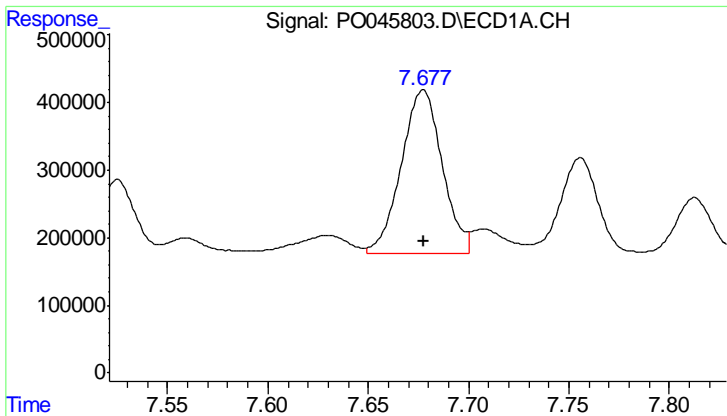
#32 AR-1260-2

R.T.: 7.397 min
 Delta R.T.: -0.001 min
 Response: 2919103
 Conc: 231.82 ng/ml



#32 AR-1260-2

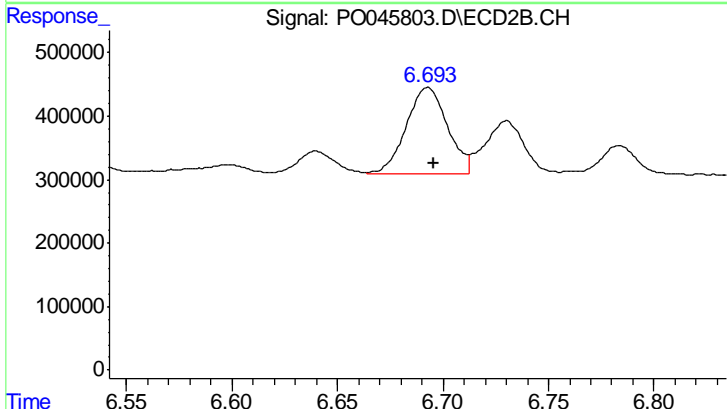
R.T.: 6.365 min
 Delta R.T.: -0.003 min
 Response: 2136655
 Conc: 307.78 ng/ml



#33 AR-1260-3

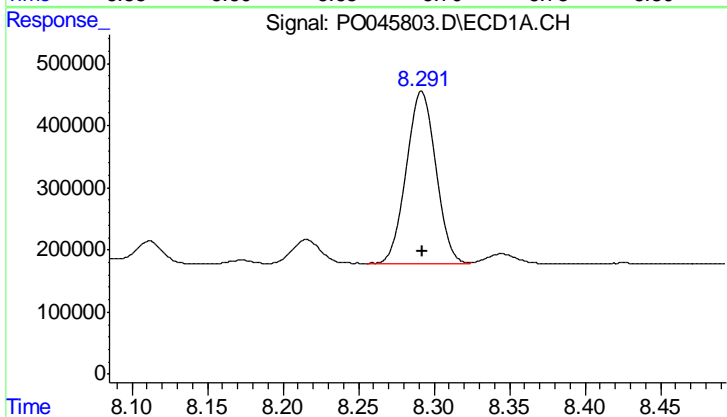
R.T.: 7.677 min
 Delta R.T.: 0.000 min
 Response: 3428127
 Conc: 227.54 ng/ml

Instrument :
 ECD_O
 ClientSampled :



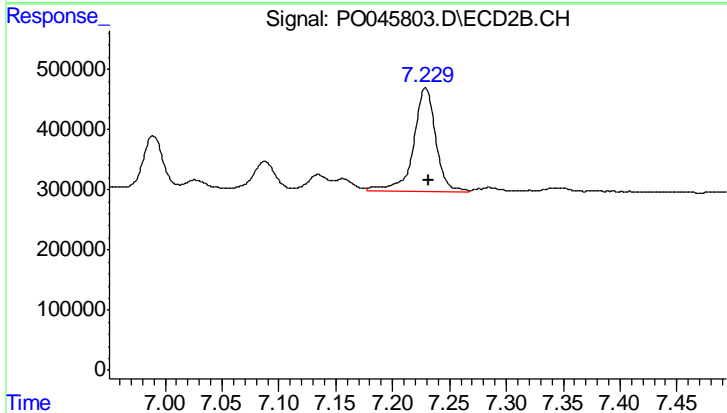
#33 AR-1260-3

R.T.: 6.693 min
 Delta R.T.: -0.003 min
 Response: 1879310
 Conc: 259.59 ng/ml



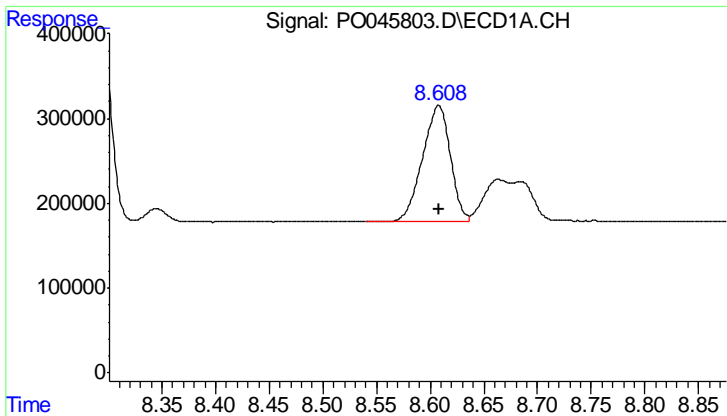
#34 AR-1260-4

R.T.: 8.292 min
 Delta R.T.: 0.000 min
 Response: 3708842
 Conc: 177.42 ng/ml



#34 AR-1260-4

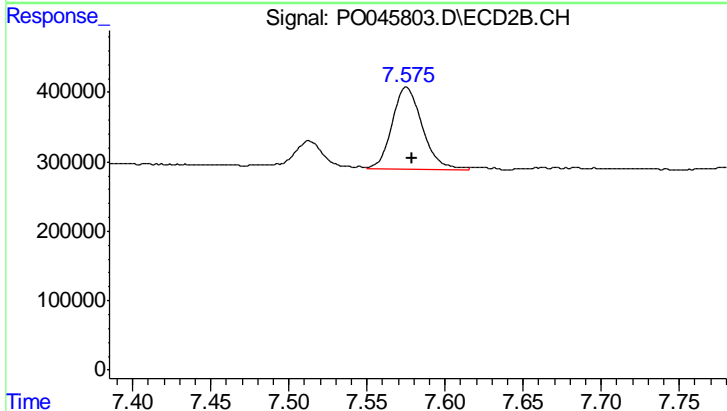
R.T.: 7.229 min
 Delta R.T.: -0.003 min
 Response: 2323947
 Conc: 208.28 ng/ml



#35 AR-1260-5

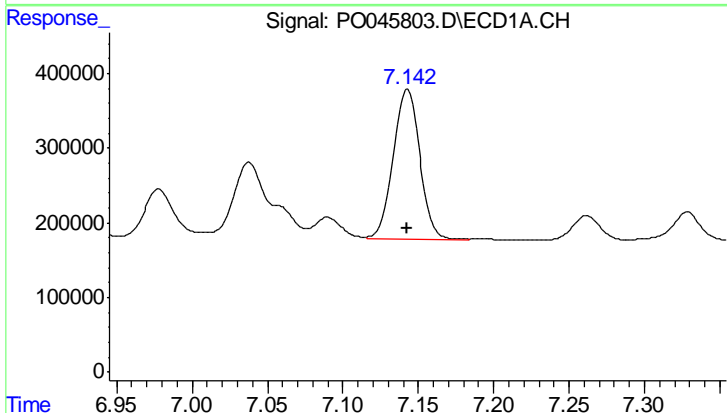
R.T.: 8.608 min
 Delta R.T.: 0.000 min
 Response: 2463893
 Conc: 179.75 ng/ml

Instrument :
 ECD_O
 ClientSampled :



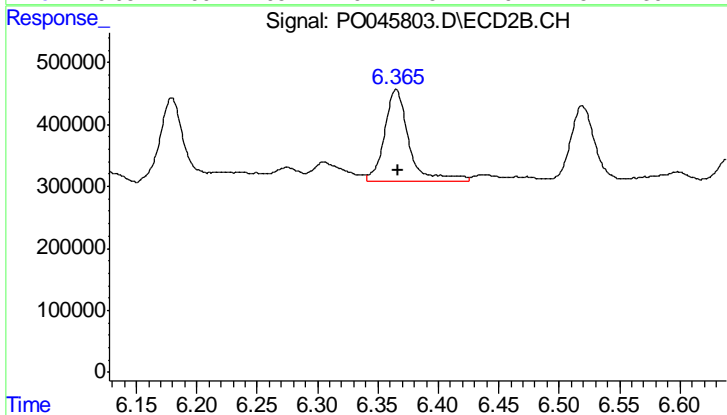
#35 AR-1260-5

R.T.: 7.575 min
 Delta R.T.: -0.004 min
 Response: 1606959
 Conc: 201.34 ng/ml



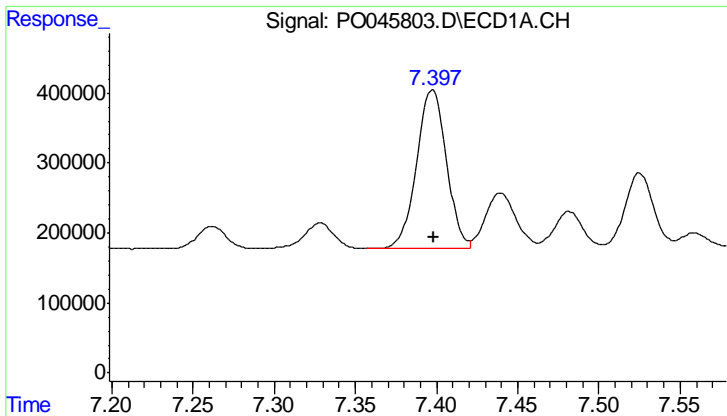
#36 AR-1262-1

R.T.: 7.143 min
 Delta R.T.: 0.000 min
 Response: 2488932
 Conc: 249.77 ng/ml



#36 AR-1262-1

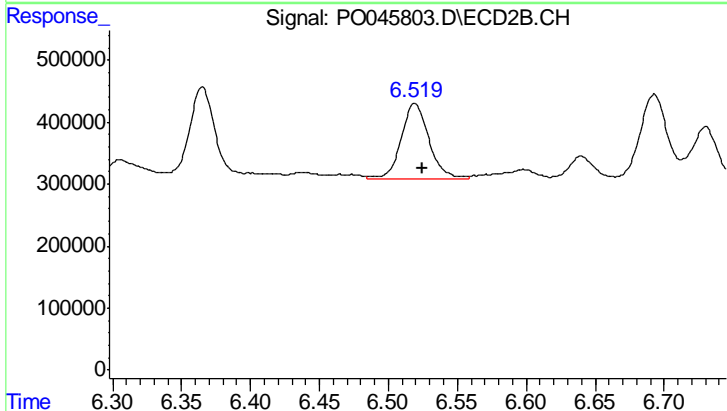
R.T.: 6.365 min
 Delta R.T.: -0.002 min
 Response: 2136655
 Conc: 356.48 ng/ml



#37 AR-1262-2

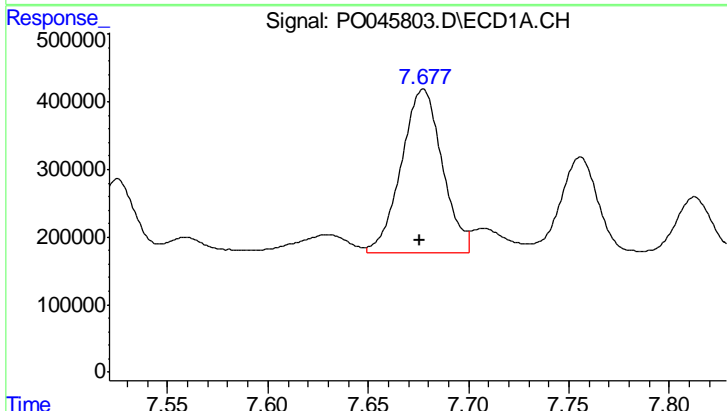
R.T.: 7.397 min
 Delta R.T.: 0.000 min
 Response: 2919103
 Conc: 250.66 ng/ml

Instrument :
 ECD_O
 ClientSampled :



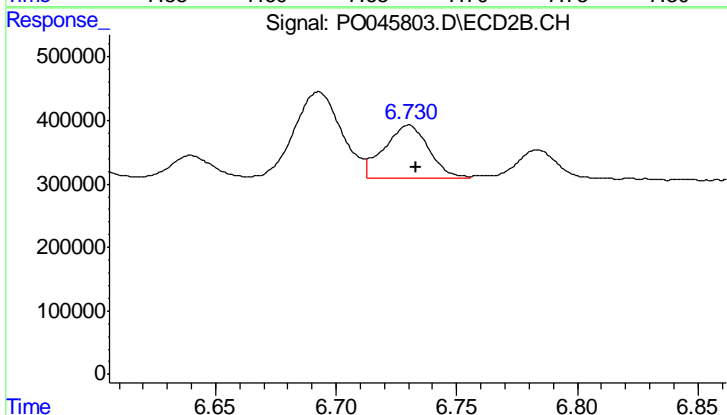
#37 AR-1262-2

R.T.: 6.519 min
 Delta R.T.: -0.005 min
 Response: 1758151
 Conc: 302.41 ng/ml



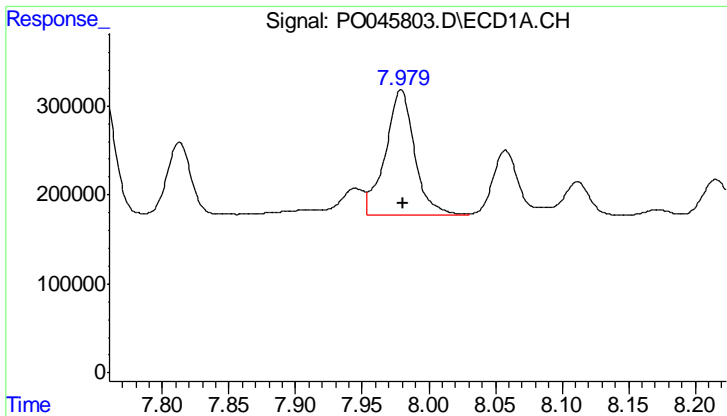
#38 AR-1262-3

R.T.: 7.677 min
 Delta R.T.: 0.001 min
 Response: 3428127
 Conc: 319.57 ng/ml



#38 AR-1262-3

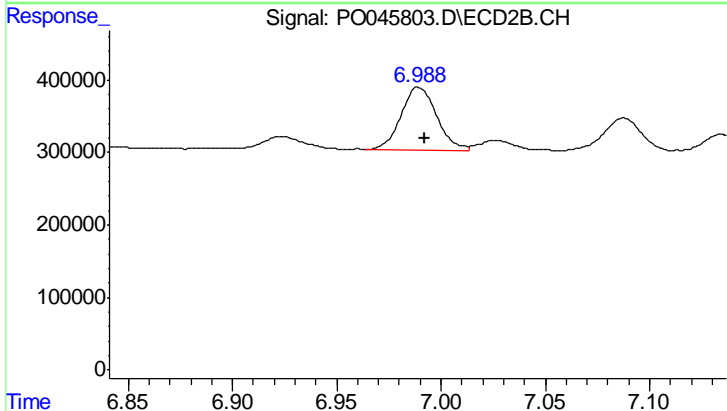
R.T.: 6.730 min
 Delta R.T.: -0.003 min
 Response: 1097947
 Conc: 137.64 ng/ml



#39 AR-1262-4

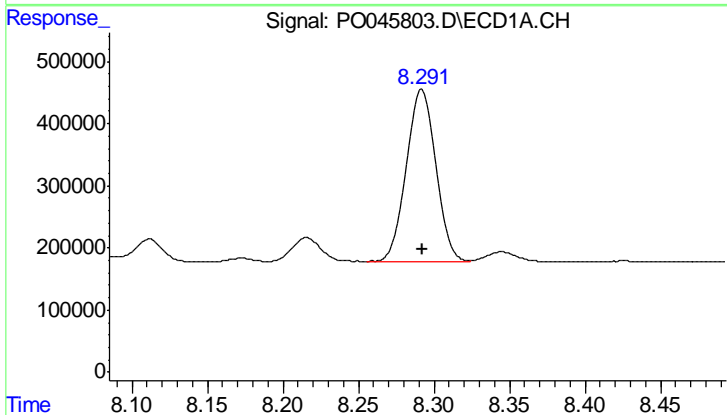
R.T.: 7.979 min
 Delta R.T.: -0.001 min
 Response: 2149306
 Conc: 145.41 ng/ml

Instrument :
 ECD_O
 ClientSampleId :



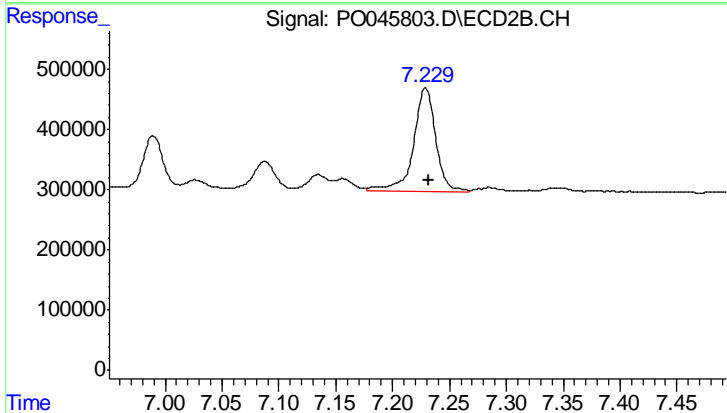
#39 AR-1262-4

R.T.: 6.989 min
 Delta R.T.: -0.003 min
 Response: 1042101
 Conc: 143.25 ng/ml



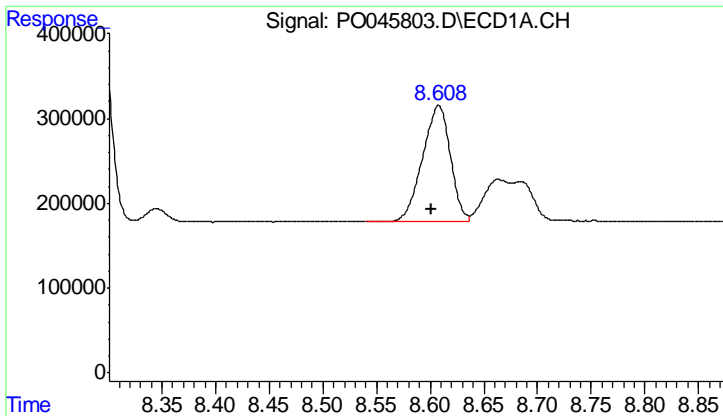
#40 AR-1262-5

R.T.: 8.292 min
 Delta R.T.: 0.000 min
 Response: 3708842
 Conc: 137.42 ng/ml



#40 AR-1262-5

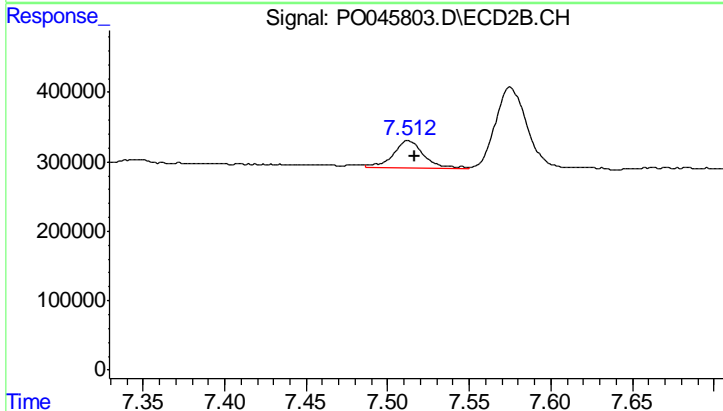
R.T.: 7.229 min
 Delta R.T.: -0.002 min
 Response: 2323947
 Conc: 170.96 ng/ml



#41 AR-1268-1

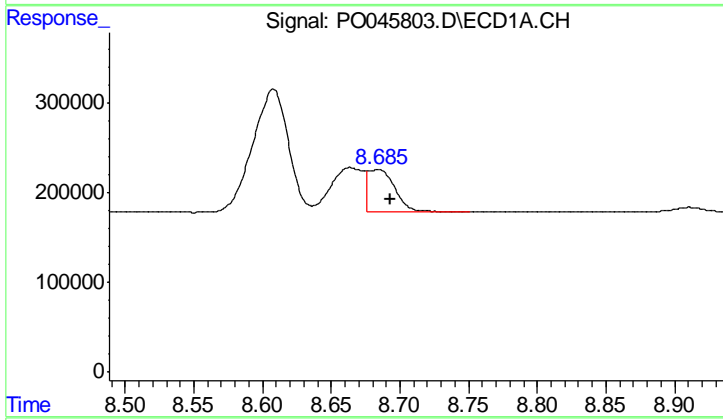
R.T.: 8.608 min
 Delta R.T.: 0.007 min
 Response: 2463893
 Conc: 91.36 ng/ml

Instrument :
 ECD_O
 ClientSampled :



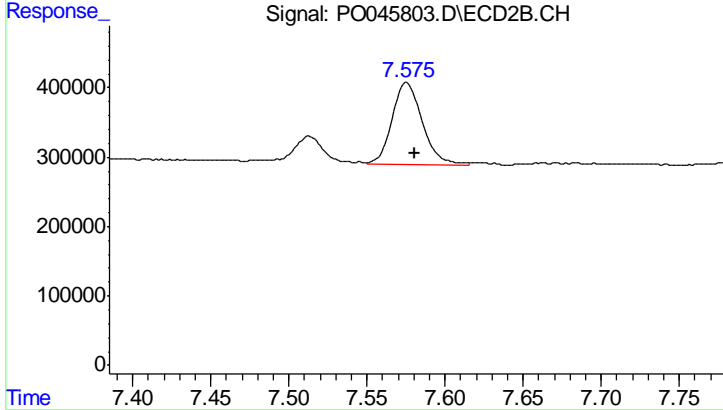
#41 AR-1268-1

R.T.: 7.513 min
 Delta R.T.: -0.004 min
 Response: 520854
 Conc: 40.75 ng/ml



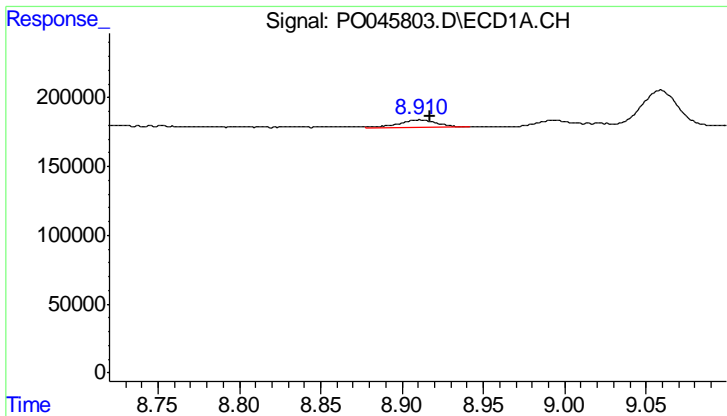
#42 AR-1268-2

R.T.: 8.684 min
 Delta R.T.: -0.009 min
 Response: 636839
 Conc: 25.10 ng/ml



#42 AR-1268-2

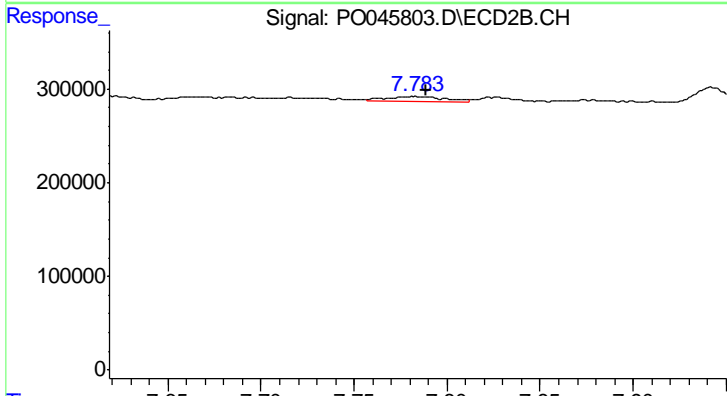
R.T.: 7.575 min
 Delta R.T.: -0.005 min
 Response: 1606959
 Conc: 138.84 ng/ml



#43 AR-1268-3

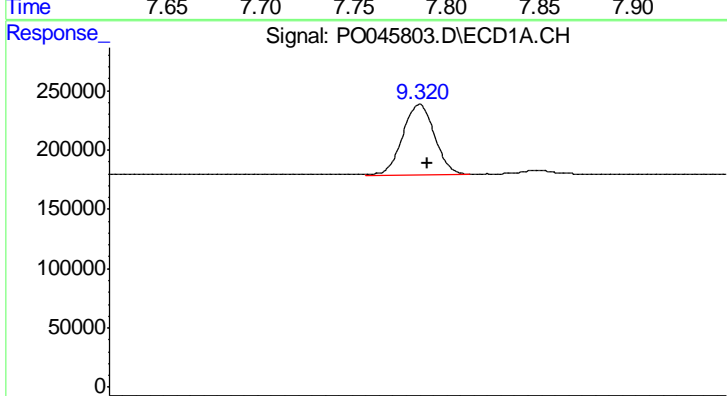
R.T.: 8.910 min
 Delta R.T.: -0.007 min
 Response: 91112
 Conc: 4.10 ng/ml

Instrument :
 ECD_O
 ClientSampled :



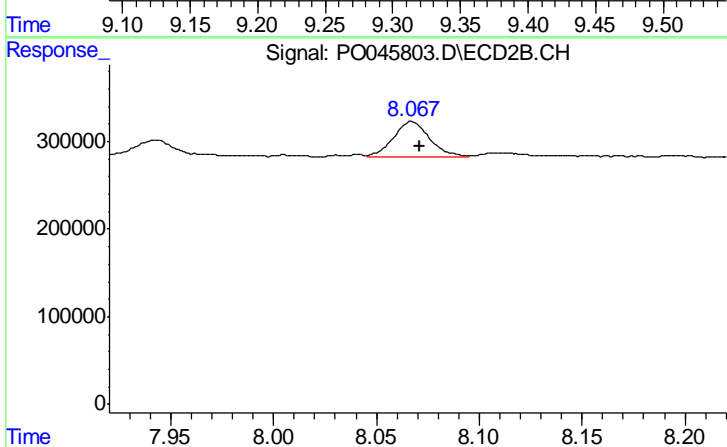
#43 AR-1268-3

R.T.: 7.782 min
 Delta R.T.: -0.007 min
 Response: 99007
 Conc: 10.09 ng/ml



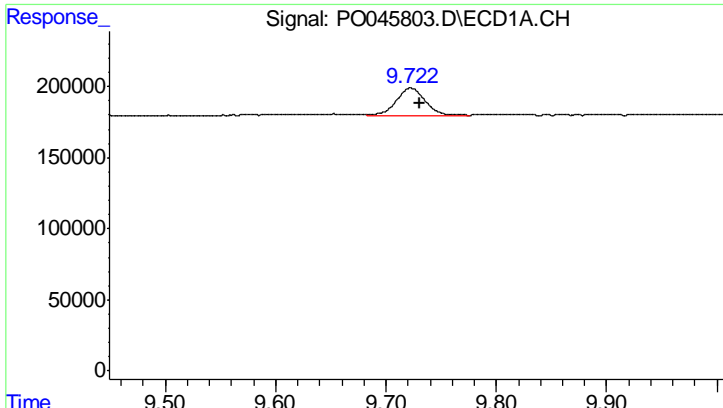
#44 AR-1268-4

R.T.: 9.320 min
 Delta R.T.: -0.006 min
 Response: 984099
 Conc: 102.33 ng/ml



#44 AR-1268-4

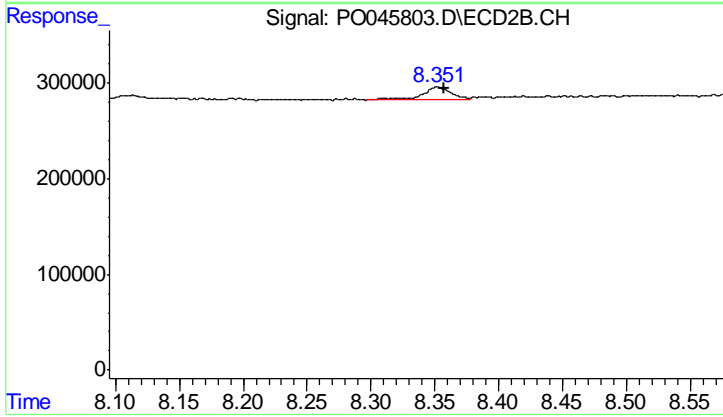
R.T.: 8.067 min
 Delta R.T.: -0.004 min
 Response: 510017
 Conc: 115.24 ng/ml



#45 AR-1268-5

R.T.: 9.723 min
 Delta R.T.: -0.008 min
 Response: 364810
 Conc: 5.49 ng/ml

Instrument :
 ECD_O
 ClientSampleId :



#45 AR-1268-5

R.T.: 8.352 min
 Delta R.T.: -0.005 min
 Response: 201029
 Conc: 7.97 ng/ml