

Data Path : Z:\pestpcbsrv\HPCHEM1\ECD_0\Data\P0061423\
 Data File : P0095726.D
 Signal(s) : Signal #1: ECD1A.ch Signal #2: ECD2B.ch
 Acq On : 15 Jun 2023 04:05
 Operator : YP/AJ
 Sample : AR1242CCC500
 Misc :
 ALS Vial : 4 Sample Multiplier: 1

Instrument :
 ECD_0
ClientSampleId :
 AR1242CCC500

Integration File signal 1: autoint1.e
 Integration File signal 2: autoint2.e
 Quant Time: Jun 15 05:06:24 2023
 Quant Method : Z:\pestpcbsrv\HPCHEM1\ECD_0\methods\P0060923.M
 Quant Title : GC EXTRACTABLES
 QLast Update : Sat Jun 10 06:51:01 2023
 Response via : Initial Calibration
 Integrator: ChemStation

Volume Inj. : 2 µl
 Signal #1 Phase : ZB-MR1 Signal #2 Phase: ZB-MR2
 Signal #1 Info : 30Mx0.32mmx 0.50µ Signal #2 Info : 30M x 0.32mm x 0.25µm

Compound	RT#1	RT#2	Resp#1	Resp#2	ng/ml	ng/ml

System Monitoring Compounds						
1) SA Tetrachlo...	4.401	3.618	240.9E6	98366032	56.199	54.109
2) SA Decachlor...	10.238	8.670	116.9E6	56626409	46.909	50.845
Target Compounds						
16) L4 AR-1242-1	5.582	4.711	52078230	21276500	621.779	667.291
17) L4 AR-1242-2	5.605	4.730	73459450	29608097	595.100	663.174
18) L4 AR-1242-3	5.668	4.907	46570181	16417226	587.982	639.570
19) L4 AR-1242-4	5.767	4.992	36952685	17732051	583.604	610.178
20) L4 AR-1242-5	6.512	5.518	33439390	19258220	543.549	661.946

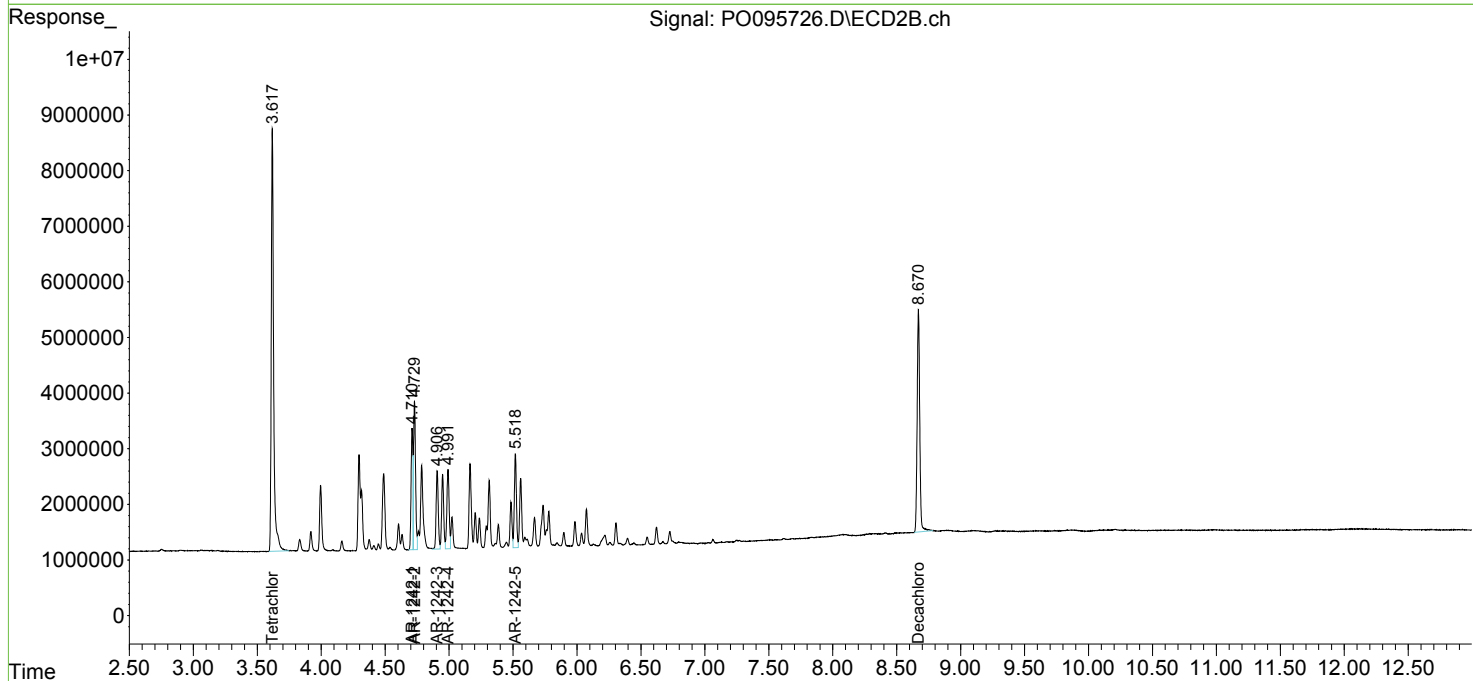
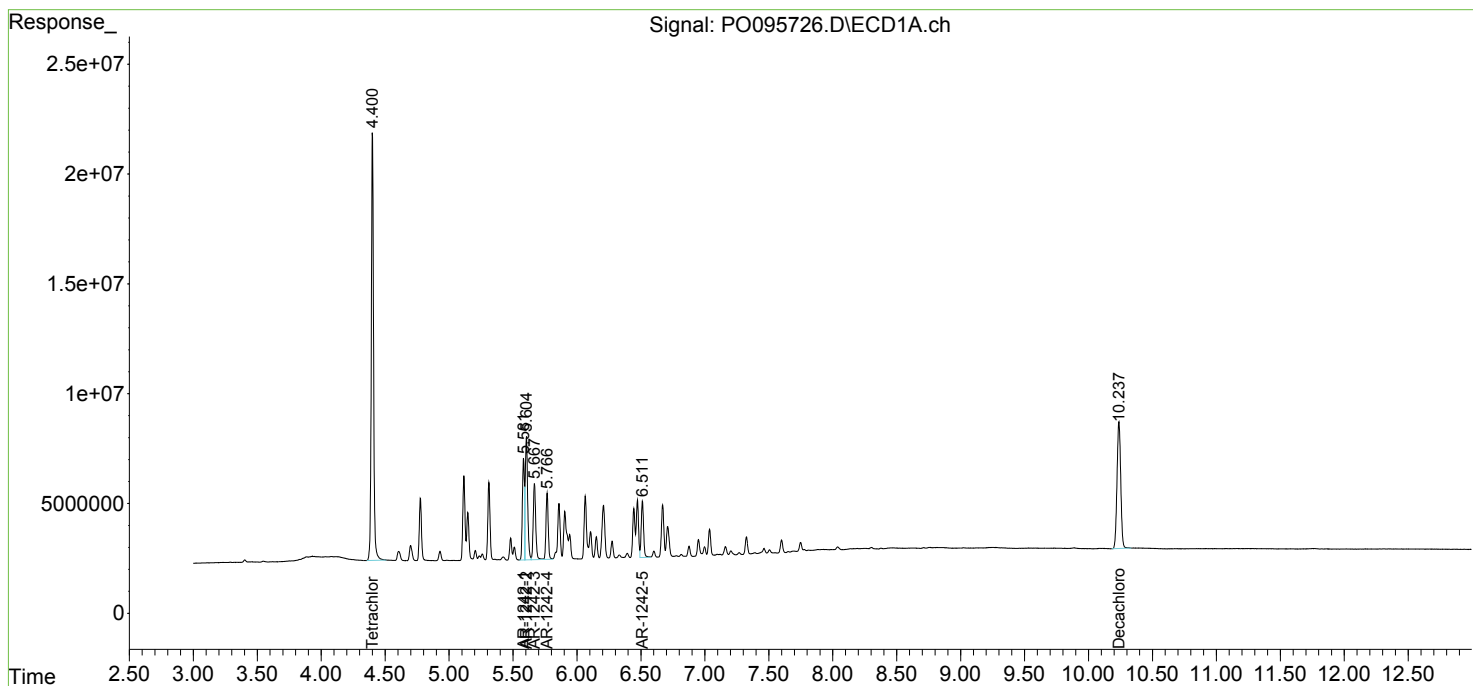
(f)=RT Delta > 1/2 Window (#)=Amounts differ by > 25% (m)=manual int.

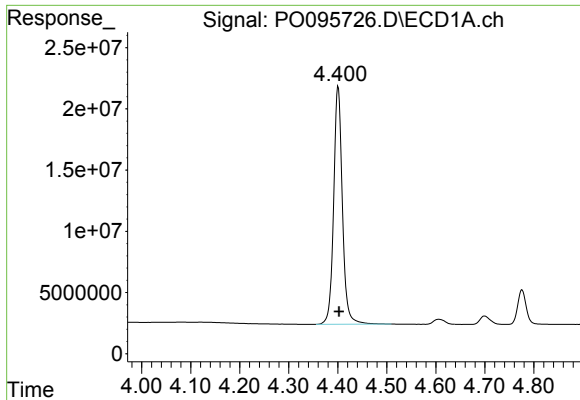
Data Path : Z:\pestpcbsrv\HPCHEM1\ECD_O\Data\PO061423\
Data File : PO095726.D
Signal(s) : Signal #1: ECD1A.ch Signal #2: ECD2B.ch
Acq On : 15 Jun 2023 04:05
Operator : YP/AJ
Sample : AR1242CCC500
Misc :
ALS Vial : 4 Sample Multiplier: 1

Instrument :
ECD_O
ClientSampleId :
AR1242CCC500

Integration File signal 1: autoint1.e
Integration File signal 2: autoint2.e
Quant Time: Jun 15 05:06:24 2023
Quant Method : Z:\pestpcbsrv\HPCHEM1\ECD_O\methods\PO060923.M
Quant Title : GC EXTRACTABLES
QLast Update : Sat Jun 10 06:51:01 2023
Response via : Initial Calibration
Integrator: ChemStation

Volume Inj. : 2 µl
Signal #1 Phase : ZB-MR1 Signal #2 Phase: ZB-MR2
Signal #1 Info : 30Mx0.32mmx 0.50µ Signal #2 Info : 30M x 0.32mm x 0.25µm

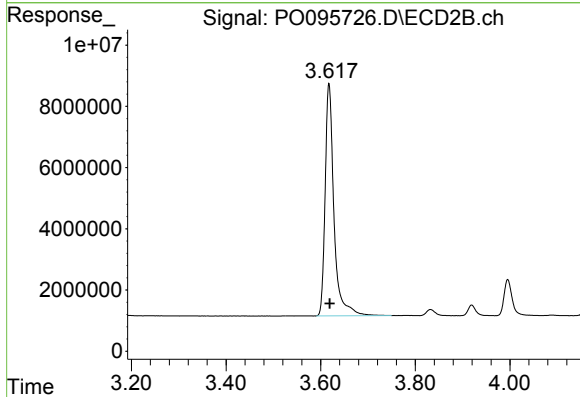




#1 Tetrachloro-m-xylene

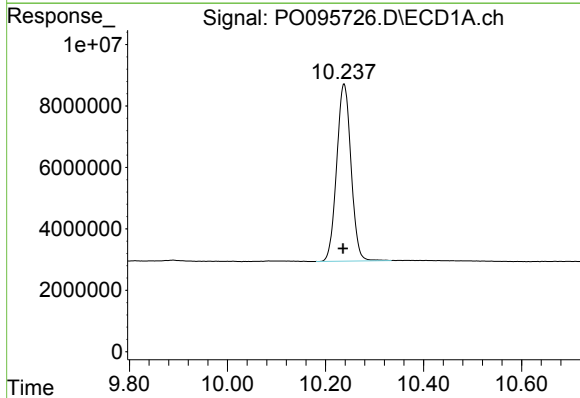
R.T.: 4.401 min
Delta R.T.: -0.002 min
Response: 240880793
Conc: 56.20 ng/ml

Instrument :
ECD_O
ClientSampleId :
AR1242CCC500



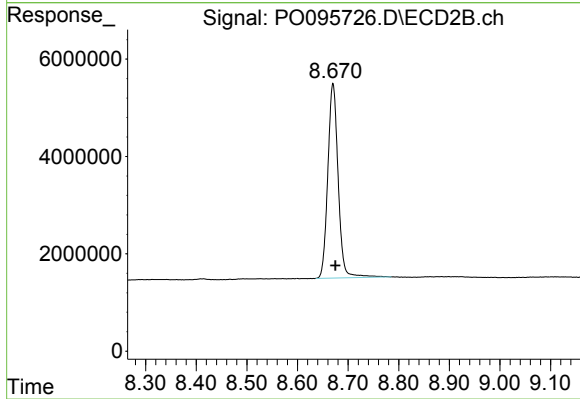
#1 Tetrachloro-m-xylene

R.T.: 3.618 min
Delta R.T.: -0.002 min
Response: 98366032
Conc: 54.11 ng/ml



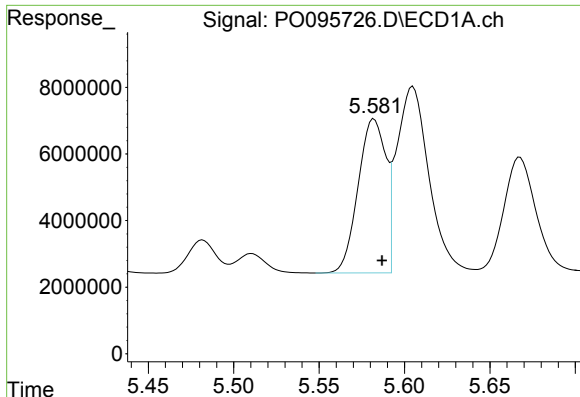
#2 Decachlorobiphenyl

R.T.: 10.238 min
Delta R.T.: 0.002 min
Response: 116909436
Conc: 46.91 ng/ml



#2 Decachlorobiphenyl

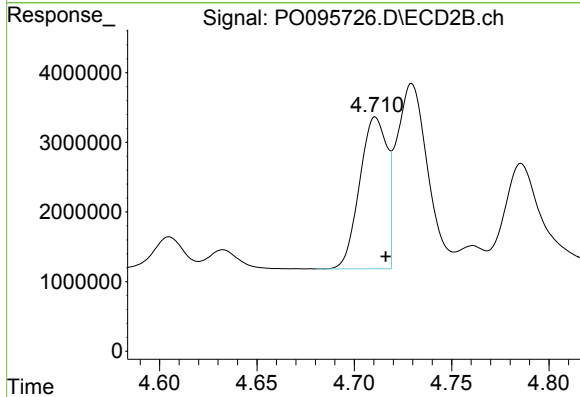
R.T.: 8.670 min
Delta R.T.: -0.005 min
Response: 56626409
Conc: 50.84 ng/ml



#16 AR-1242-1

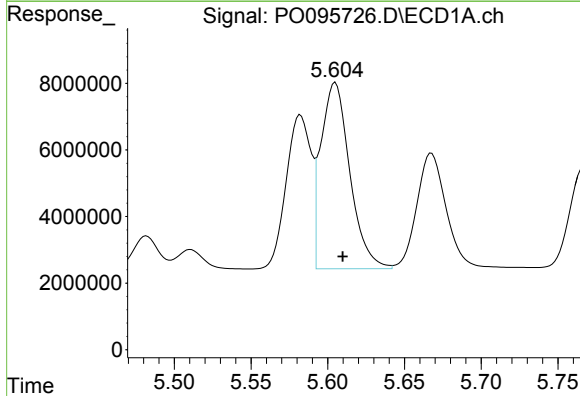
R.T.: 5.582 min
 Delta R.T.: -0.005 min
 Response: 52078230
 Conc: 621.78 ng/ml

Instrument :
 ECD_O
 ClientSampleId :
 AR1242CCC500



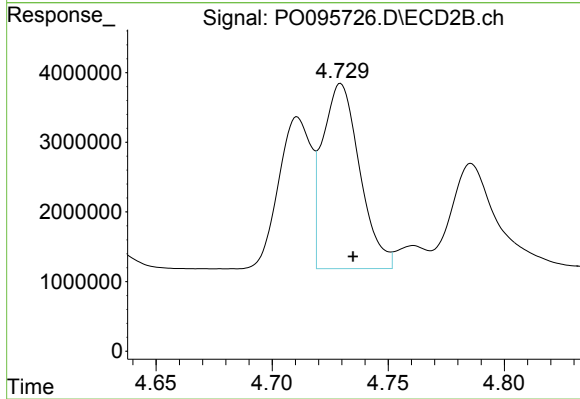
#16 AR-1242-1

R.T.: 4.711 min
 Delta R.T.: -0.005 min
 Response: 21276500
 Conc: 667.29 ng/ml



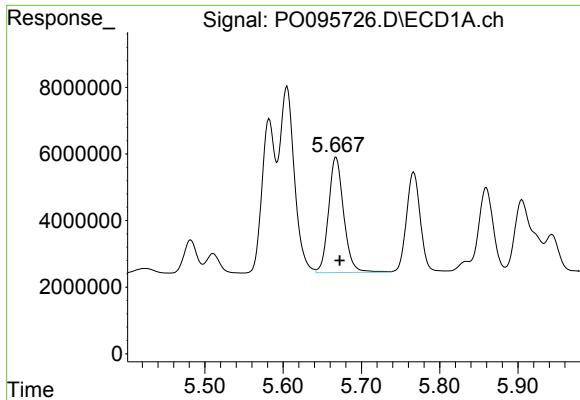
#17 AR-1242-2

R.T.: 5.605 min
 Delta R.T.: -0.005 min
 Response: 73459450
 Conc: 595.10 ng/ml



#17 AR-1242-2

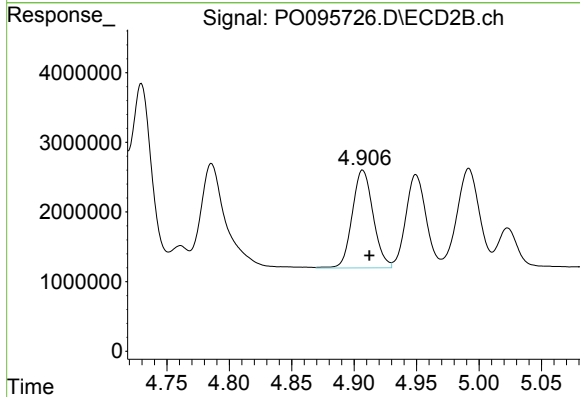
R.T.: 4.730 min
 Delta R.T.: -0.005 min
 Response: 29608097
 Conc: 663.17 ng/ml



#18 AR-1242-3

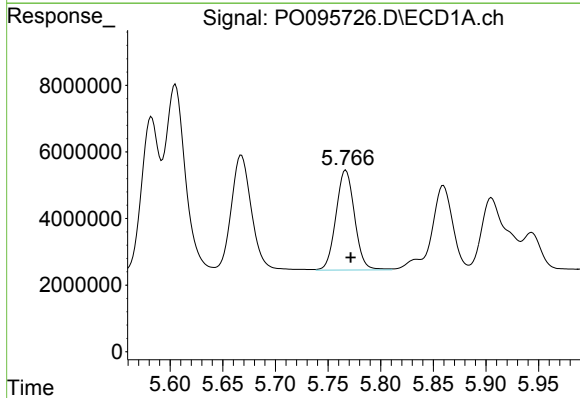
R.T.: 5.668 min
 Delta R.T.: -0.005 min
 Response: 46570181
 Conc: 587.98 ng/ml

Instrument :
 ECD_O
 ClientSampleId :
 AR1242CCC500



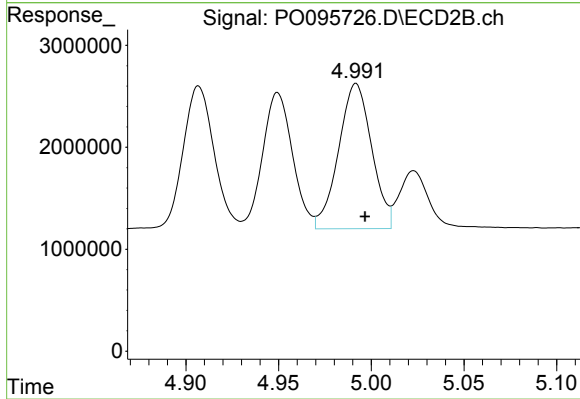
#18 AR-1242-3

R.T.: 4.907 min
 Delta R.T.: -0.005 min
 Response: 16417226
 Conc: 639.57 ng/ml



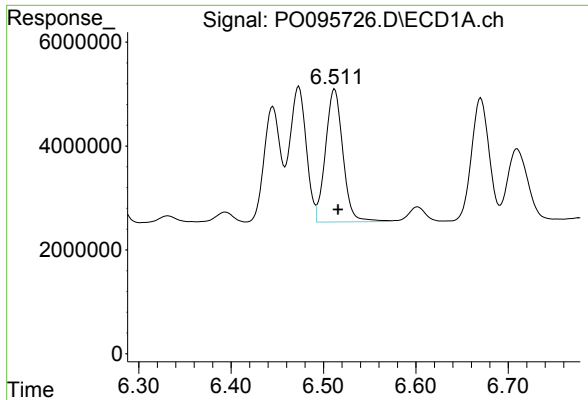
#19 AR-1242-4

R.T.: 5.767 min
 Delta R.T.: -0.005 min
 Response: 36952685
 Conc: 583.60 ng/ml



#19 AR-1242-4

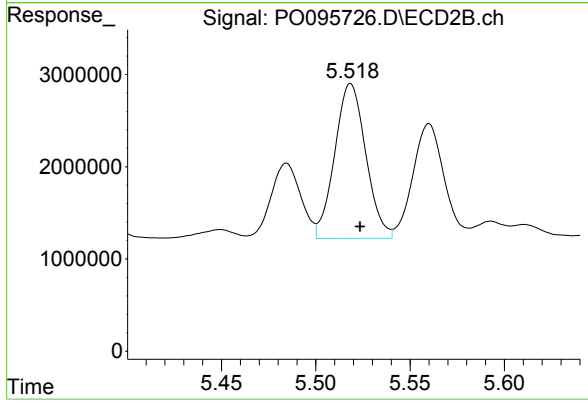
R.T.: 4.992 min
 Delta R.T.: -0.005 min
 Response: 17732051
 Conc: 610.18 ng/ml



#20 AR-1242-5

R.T.: 6.512 min
Delta R.T.: -0.004 min
Response: 33439390
Conc: 543.55 ng/ml

Instrument :
ECD_O
ClientSampleId :
AR1242CCC500



#20 AR-1242-5

R.T.: 5.518 min
Delta R.T.: -0.005 min
Response: 19258220
Conc: 661.95 ng/ml