

Data Path : Z:\pestpcbsrv\HPCHEM1\ECD_0\Data\P0061523\
 Data File : P0095736.D
 Signal(s) : Signal #1: ECD1A.ch Signal #2: ECD2B.ch
 Acq On : 15 Jun 2023 12:53
 Operator : YP/AJ
 Sample : 03223-01
 Misc :
 ALS Vial : 11 Sample Multiplier: 1

Instrument :
 ECD_0
ClientSampleId :
 COMPOSIT-SB-04

Manual Integrations
APPROVED

Reviewed By :Yogesh Patel 06/16/2023
 Supervised By :Ankita Jodhani 06/16/2023

Integration File signal 1: autoint1.e
 Integration File signal 2: autoint2.e
 Quant Time: Jun 15 20:45:24 2023
 Quant Method : Z:\pestpcbsrv\HPCHEM1\ECD_0\methods\P0060923.M
 Quant Title : GC EXTRACTABLES
 QLast Update : Sat Jun 10 06:51:01 2023
 Response via : Initial Calibration
 Integrator: ChemStation

Volume Inj. : 2 µl
 Signal #1 Phase : ZB-MR2 Signal #2 Phase: ZB-MR2
 Signal #1 Info : 30Mx0.32mmx 0.50µ Signal #2 Info : 30M x 0.32mm x 0.25µm

Compound	RT#1	RT#2	Resp#1	Resp#2	ng/ml	ng/ml

System Monitoring Compounds						
1) SA Tetrachlo...	4.400	3.617	108.6E6	45635628	25.341	25.103
2) SA Decachlor...	10.237	8.669	73491544	32122429	29.488	28.843
Target Compounds						
26) L6 AR-1254-1	6.447	5.520	67102262	37040027	542.549m	533.402
27) L6 AR-1254-2	6.668	5.668	66556377	20402734	372.219	319.851
28) L6 AR-1254-3	7.037	6.075	101.1E6	57349132	583.004	625.580
29) L6 AR-1254-4	7.324	6.305	30454116	14045832	265.570	329.296
30) L6 AR-1254-5	7.747	6.725	115.4E6	67176860	836.497m	864.065
31) L7 AR-1260-1	7.203	6.206	63673099	38090730	404.106	499.777
32) L7 AR-1260-2	7.458	6.396	143.3E6	34941598	835.337	436.547 #
33) L7 AR-1260-3	7.747	6.549	119.7E6	31484734	612.185m	406.095 #
34) L7 AR-1260-4	8.050	7.026	56961504	17580885	446.866	327.755 #
35) L7 AR-1260-5	8.378	7.269	79078161	47201516	357.929	441.777

(f)=RT Delta > 1/2 Window (#)=Amounts differ by > 25% (m)=manual int.

Data Path : Z:\pestpcbsrv\HPCHEM1\ECD_0\Data\P0061523\
 Data File : P0095736.D
 Signal(s) : Signal #1: ECD1A.ch Signal #2: ECD2B.ch
 Acq On : 15 Jun 2023 12:53
 Operator : YP/AJ
 Sample : 03223-01
 Misc :
 ALS Vial : 11 Sample Multiplier: 1

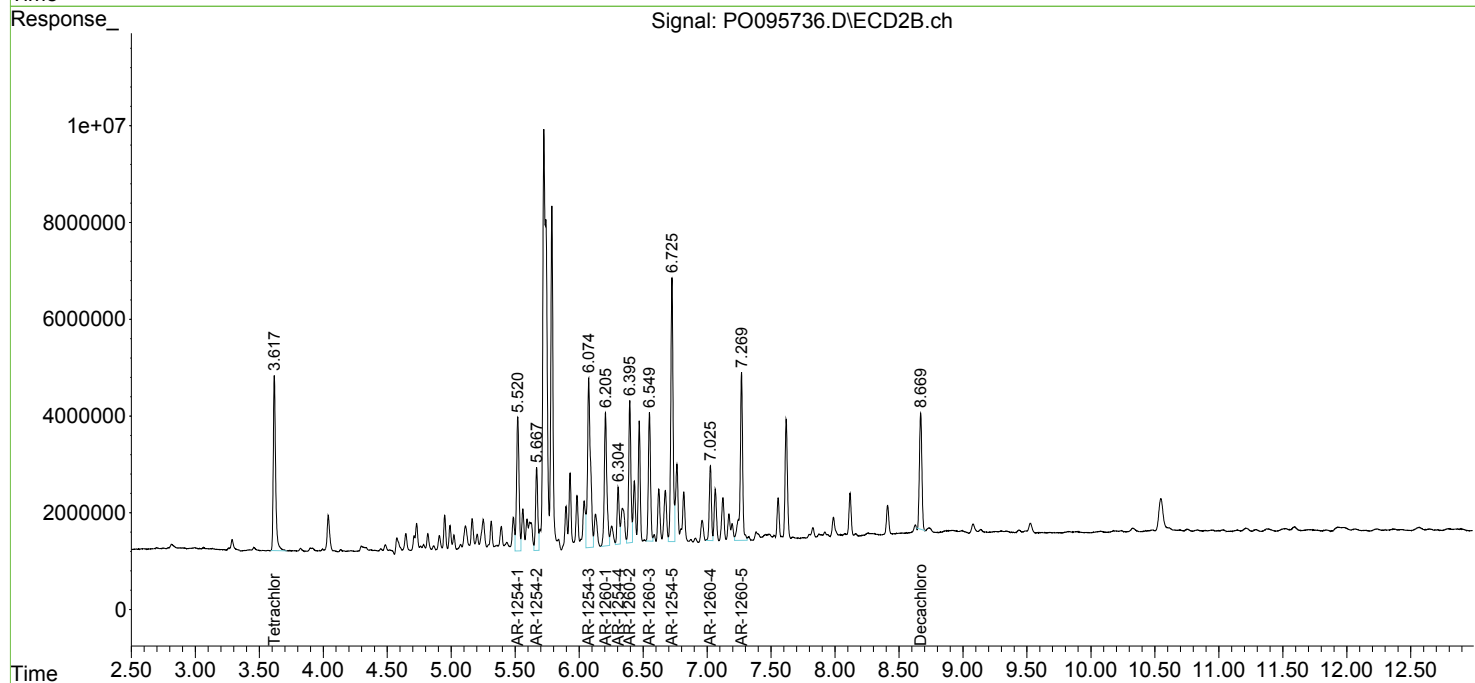
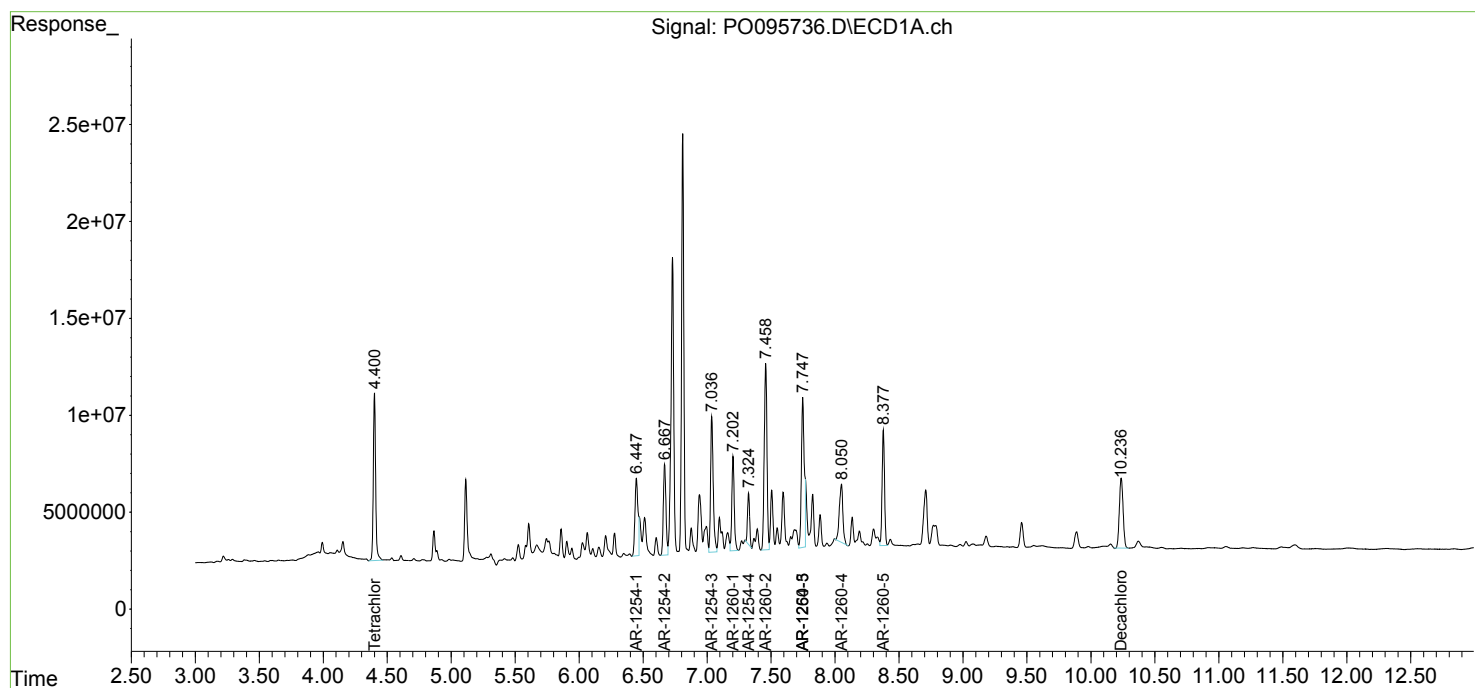
Instrument :
 ECD_0
 ClientSampleId :
 COMPOSIT-SB-04

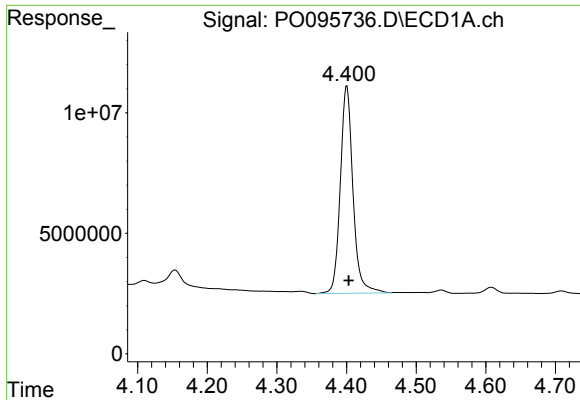
Manual Integrations
 APPROVED

Reviewed By :Yogesh Patel 06/16/2023
 Supervised By :Ankita Jodhani 06/16/2023

Integration File signal 1: autoint1.e
 Integration File signal 2: autoint2.e
 Quant Time: Jun 15 20:45:24 2023
 Quant Method : Z:\pestpcbsrv\HPCHEM1\ECD_0\methods\P0060923.M
 Quant Title : GC EXTRACTABLES
 QLast Update : Sat Jun 10 06:51:01 2023
 Response via : Initial Calibration
 Integrator: ChemStation

Volume Inj. : 2 µl
 Signal #1 Phase : ZB-MR1 Signal #2 Phase: ZB-MR2
 Signal #1 Info : 30Mx0.32mmx 0.50µ Signal #2 Info : 30M x 0.32mm x 0.25µm



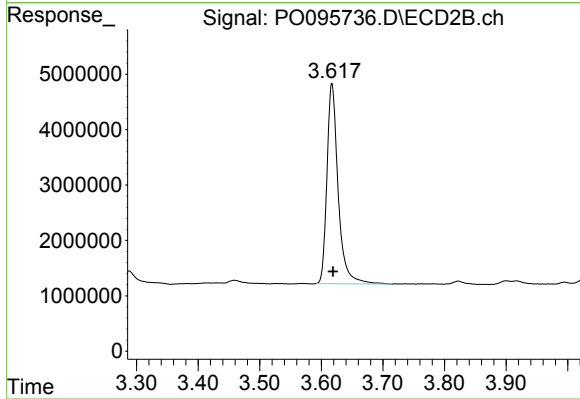


#1 Tetrachloro-m-xylene
 R.T.: 4.400 min
 Delta R.T.: -0.003 min
 Response: 108617069
 Conc: 25.34 ng/ml

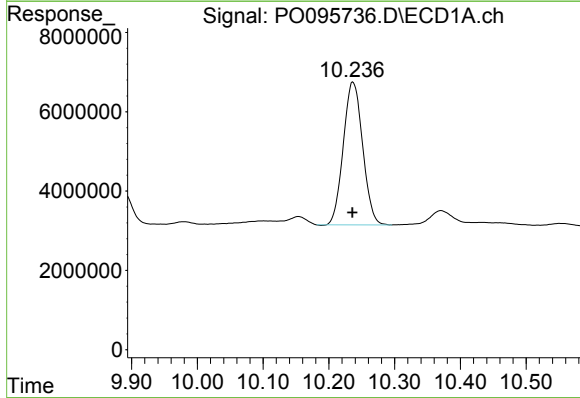
Instrument :
 ECD_O
 ClientSampleId :
 COMPOSIT-SB-04

Manual Integrations
 APPROVED

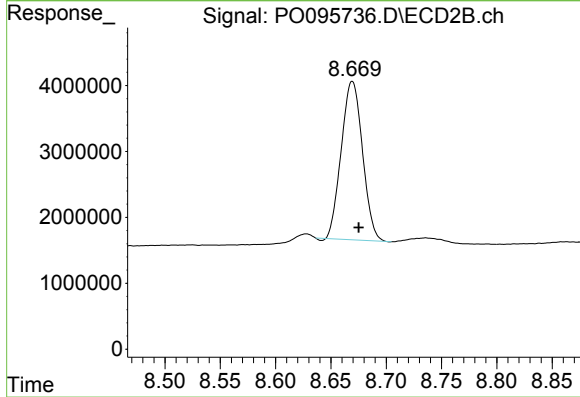
Reviewed By :Yogesh Patel 06/16/2023
 Supervised By :Ankita Jodhani 06/16/2023



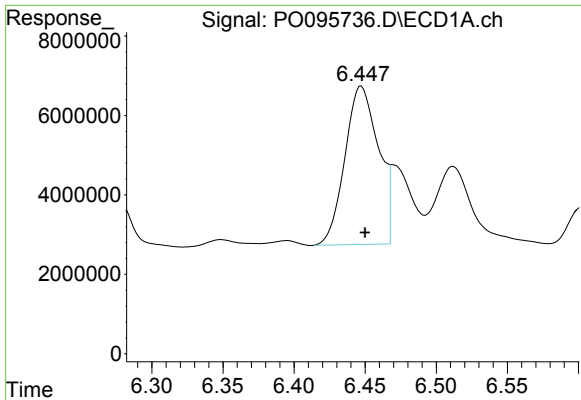
#1 Tetrachloro-m-xylene
 R.T.: 3.617 min
 Delta R.T.: -0.002 min
 Response: 45635628
 Conc: 25.10 ng/ml



#2 Decachlorobiphenyl
 R.T.: 10.237 min
 Delta R.T.: 0.001 min
 Response: 73491544
 Conc: 29.49 ng/ml



#2 Decachlorobiphenyl
 R.T.: 8.669 min
 Delta R.T.: -0.006 min
 Response: 32122429
 Conc: 28.84 ng/ml



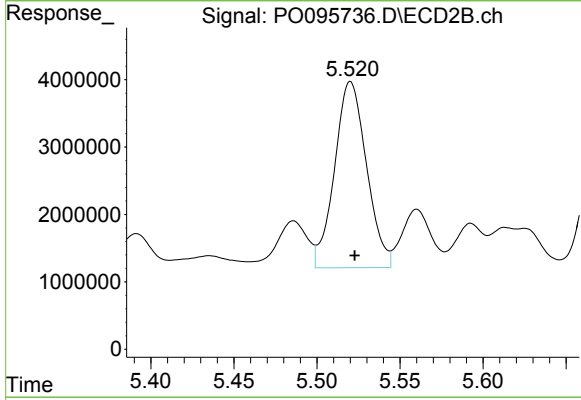
#26 AR-1254-1

R.T.: 6.447 min
 Delta R.T.: -0.003 min
 Response: 67102262
 Conc: 542.55 ng/ml

Instrument :
 ECD_O
 ClientSampleId :
 COMPOSIT-SB-04

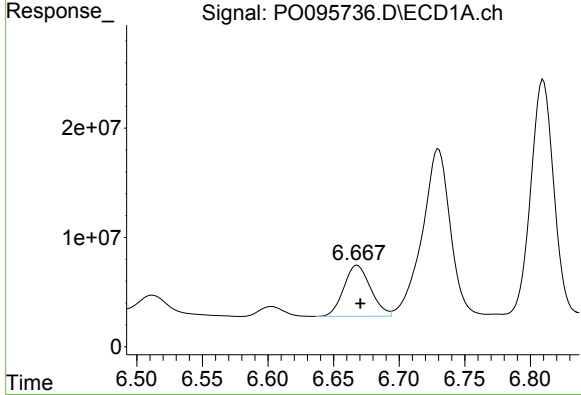
Manual Integrations
 APPROVED

Reviewed By :Yogesh Patel 06/16/2023
 Supervised By :Ankita Jodhani 06/16/2023



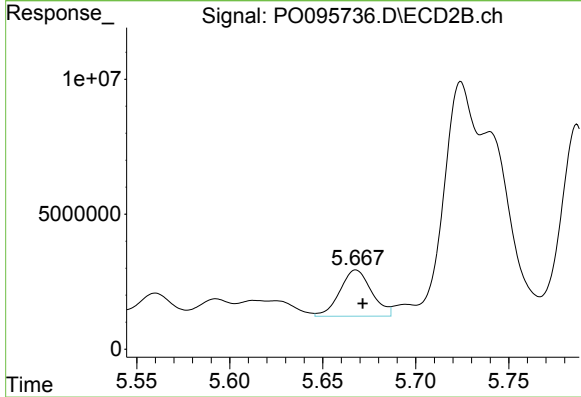
#26 AR-1254-1

R.T.: 5.520 min
 Delta R.T.: -0.003 min
 Response: 37040027
 Conc: 533.40 ng/ml



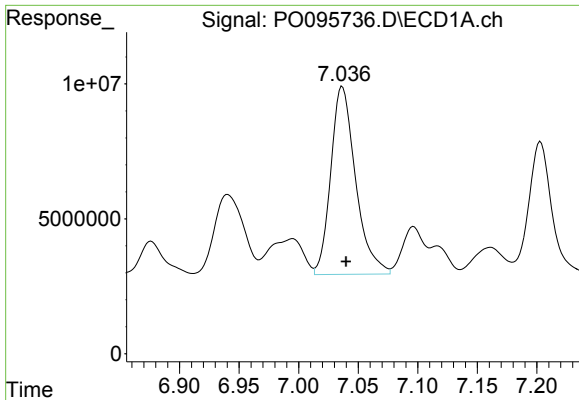
#27 AR-1254-2

R.T.: 6.668 min
 Delta R.T.: -0.002 min
 Response: 66556377
 Conc: 372.22 ng/ml



#27 AR-1254-2

R.T.: 5.668 min
 Delta R.T.: -0.004 min
 Response: 20402734
 Conc: 319.85 ng/ml



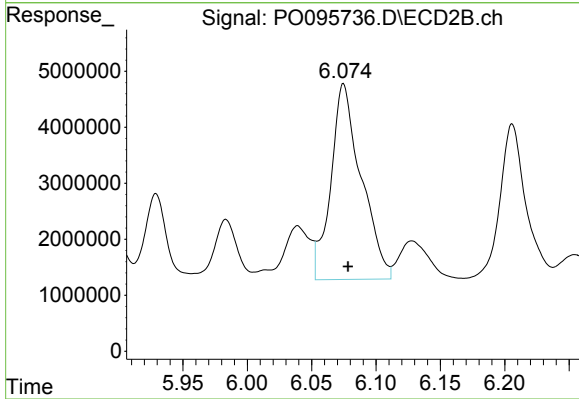
#28 AR-1254-3

R.T.: 7.037 min
 Delta R.T.: -0.003 min
 Response: 101084017
 Conc: 583.00 ng/ml

Instrument :
 ECD_O
 ClientSampleId :
 COMPOSIT-SB-04

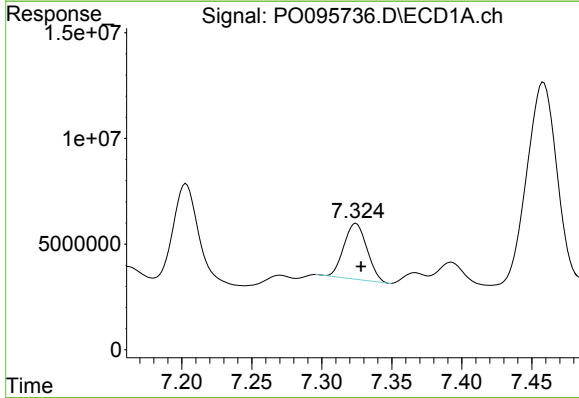
Manual Integrations
 APPROVED

Reviewed By :Yogesh Patel 06/16/2023
 Supervised By :Ankita Jodhani 06/16/2023



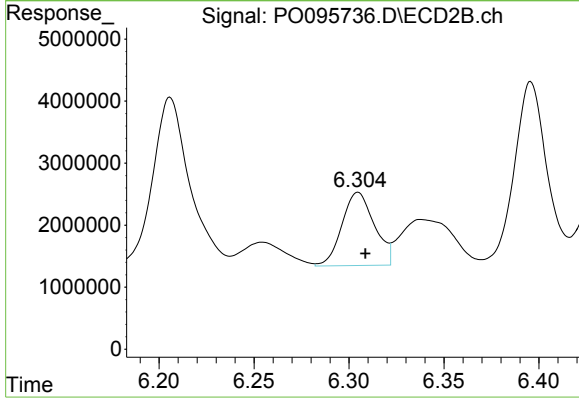
#28 AR-1254-3

R.T.: 6.075 min
 Delta R.T.: -0.003 min
 Response: 57349132
 Conc: 625.58 ng/ml



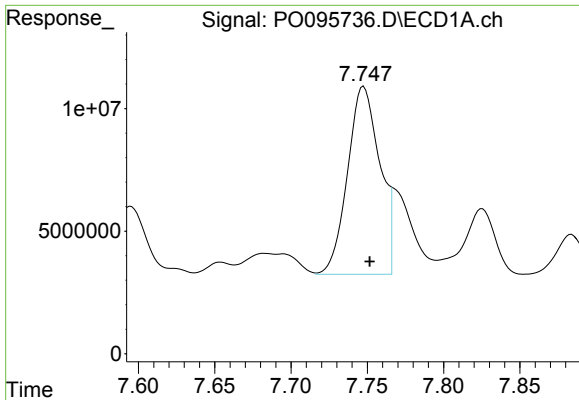
#29 AR-1254-4

R.T.: 7.324 min
 Delta R.T.: -0.004 min
 Response: 30454116
 Conc: 265.57 ng/ml



#29 AR-1254-4

R.T.: 6.305 min
 Delta R.T.: -0.004 min
 Response: 14045832
 Conc: 329.30 ng/ml

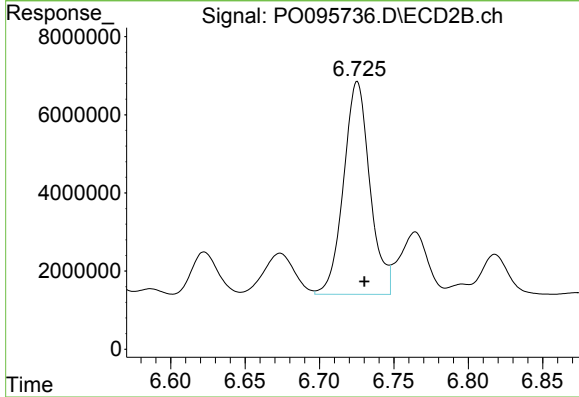


#30 AR-1254-5

R.T.: 7.747 min
 Delta R.T.: -0.005 min
 Response: 115362331
 Conc: 836.50 ng/ml

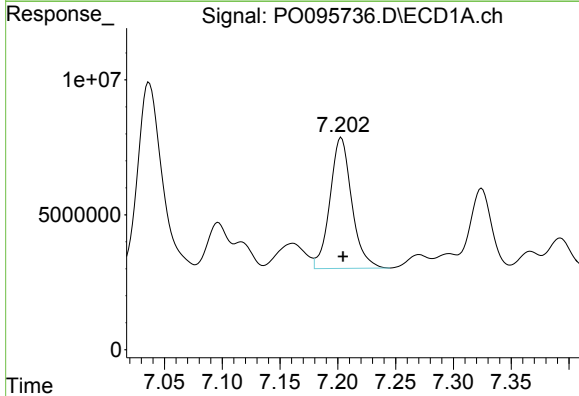
Instrument :
 ECD_O
 ClientSampleId :
 COMPOSIT-SB-04

Manual Integrations
APPROVED
 Reviewed By :Yogesh Patel 06/16/2023
 Supervised By :Ankita Jodhani 06/16/2023



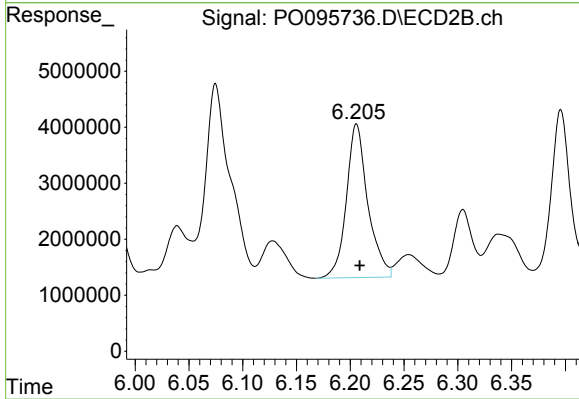
#30 AR-1254-5

R.T.: 6.725 min
 Delta R.T.: -0.005 min
 Response: 67176860
 Conc: 864.06 ng/ml



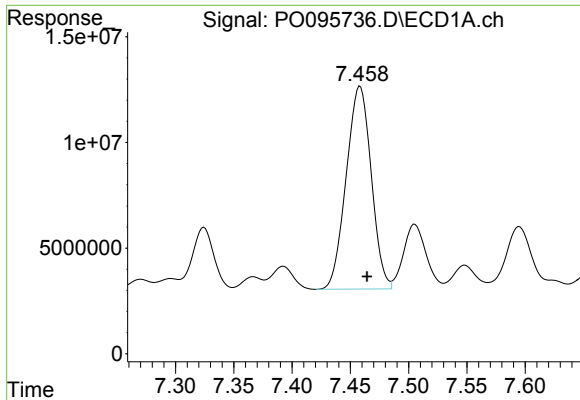
#31 AR-1260-1

R.T.: 7.203 min
 Delta R.T.: -0.002 min
 Response: 63673099
 Conc: 404.11 ng/ml



#31 AR-1260-1

R.T.: 6.206 min
 Delta R.T.: -0.003 min
 Response: 38090730
 Conc: 499.78 ng/ml



#32 AR-1260-2

R.T.: 7.458 min
 Delta R.T.: -0.006 min
 Response: 143295850
 Conc: 835.34 ng/ml

Instrument :

ECD_O

ClientSampleId :

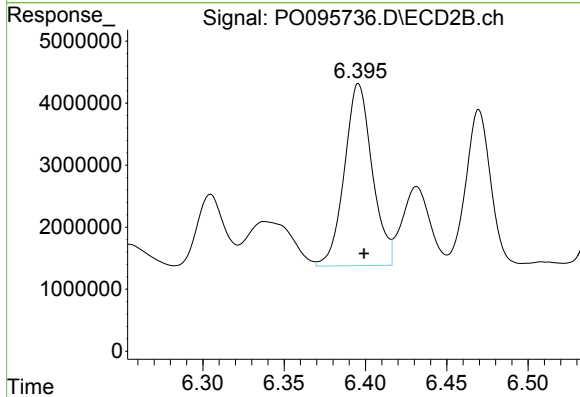
COMPOSIT-SB-04

Manual Integrations

APPROVED

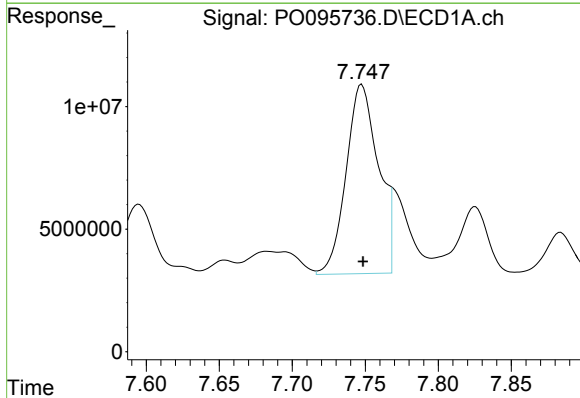
Reviewed By :Yogesh Patel 06/16/2023

Supervised By :Ankita Jodhani 06/16/2023



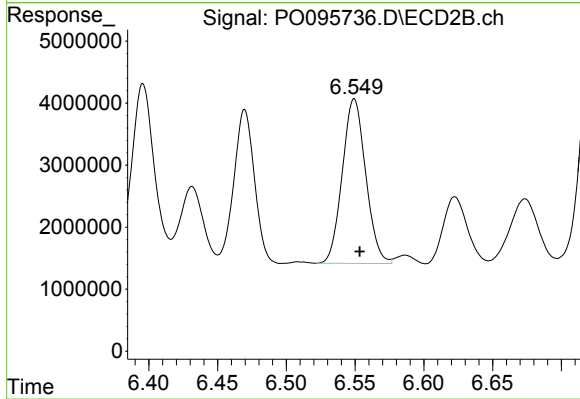
#32 AR-1260-2

R.T.: 6.396 min
 Delta R.T.: -0.003 min
 Response: 34941598
 Conc: 436.55 ng/ml



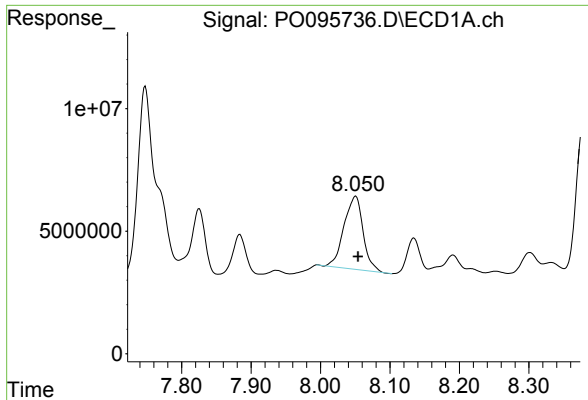
#33 AR-1260-3

R.T.: 7.747 min
 Delta R.T.: -0.002 min
 Response: 119671250
 Conc: 612.18 ng/ml m



#33 AR-1260-3

R.T.: 6.549 min
 Delta R.T.: -0.004 min
 Response: 31484734
 Conc: 406.09 ng/ml

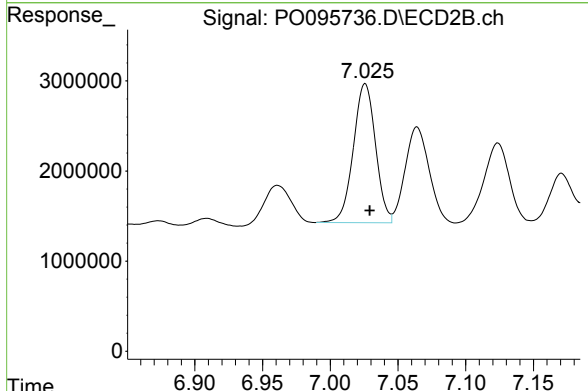


#34 AR-1260-4

R.T.: 8.050 min
 Delta R.T.: -0.004 min
 Response: 56961504
 Conc: 446.87 ng/ml

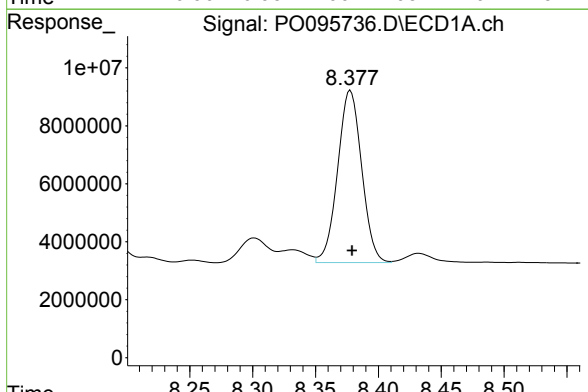
Instrument : ECD_O
 ClientSampleId : COMPOSIT-SB-04

Manual Integrations
APPROVED
 Reviewed By :Yogesh Patel 06/16/2023
 Supervised By :Ankita Jodhani 06/16/2023



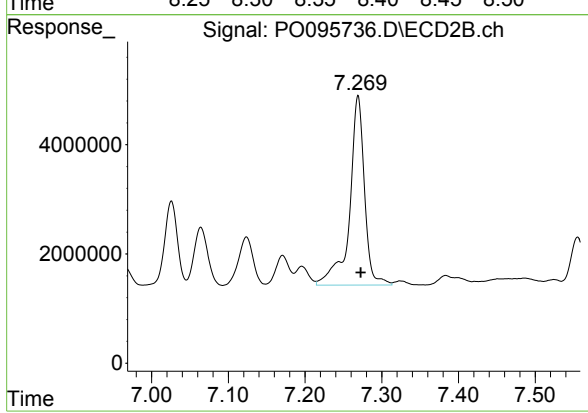
#34 AR-1260-4

R.T.: 7.026 min
 Delta R.T.: -0.003 min
 Response: 17580885
 Conc: 327.75 ng/ml



#35 AR-1260-5

R.T.: 8.378 min
 Delta R.T.: -0.001 min
 Response: 79078161
 Conc: 357.93 ng/ml



#35 AR-1260-5

R.T.: 7.269 min
 Delta R.T.: -0.004 min
 Response: 47201516
 Conc: 441.78 ng/ml