

Data Path : Z:\pestpcbsrv\HPCHEM1\FID_C\Data\FC061518AL\
 Data File : FC034739.D
 Signal(s) : FID1A.CH
 Acq On : 15 Jun 2018 20:24
 Operator : UA/AJ
 Sample : J3241-07DL 5X
 Misc :
 ALS Vial : 6 Sample Multiplier: 1

Instrument :
 ECD_O
 ClientSampleId :

Integration File: autoint1.e
 Quant Time: Jun 16 06:00:59 2018
 Quant Method : Z:\PESTPCBSRV\HPCHEM1\FID_C\Method\Alaphatic EPH 052418.M
 Quant Title : GC Extractables
 QLast Update : Fri May 25 02:29:20 2018
 Response via : Initial Calibration
 Integrator: ChemStation 6890 Scale Mode: Large solvent peaks clipped

Volume Inj. : 1 ul
 Signal Phase : Rxi-lms
 Signal Info : 20M x 0.18mm x 0.18um

Compound	R.T.	Response	Conc Units
System Monitoring Compounds			
9) S ortho-Terphenyl (SURR)	11.465	738220	4.899 ug/ml
Spiked Amount	50.000	Recovery =	9.80%
12) S 1-chlorooctadecane (S...	12.904	903258	7.619 ug/ml
Spiked Amount	50.000	Recovery =	15.24%

Target Compounds

(f)=RT Delta > 1/2 Window

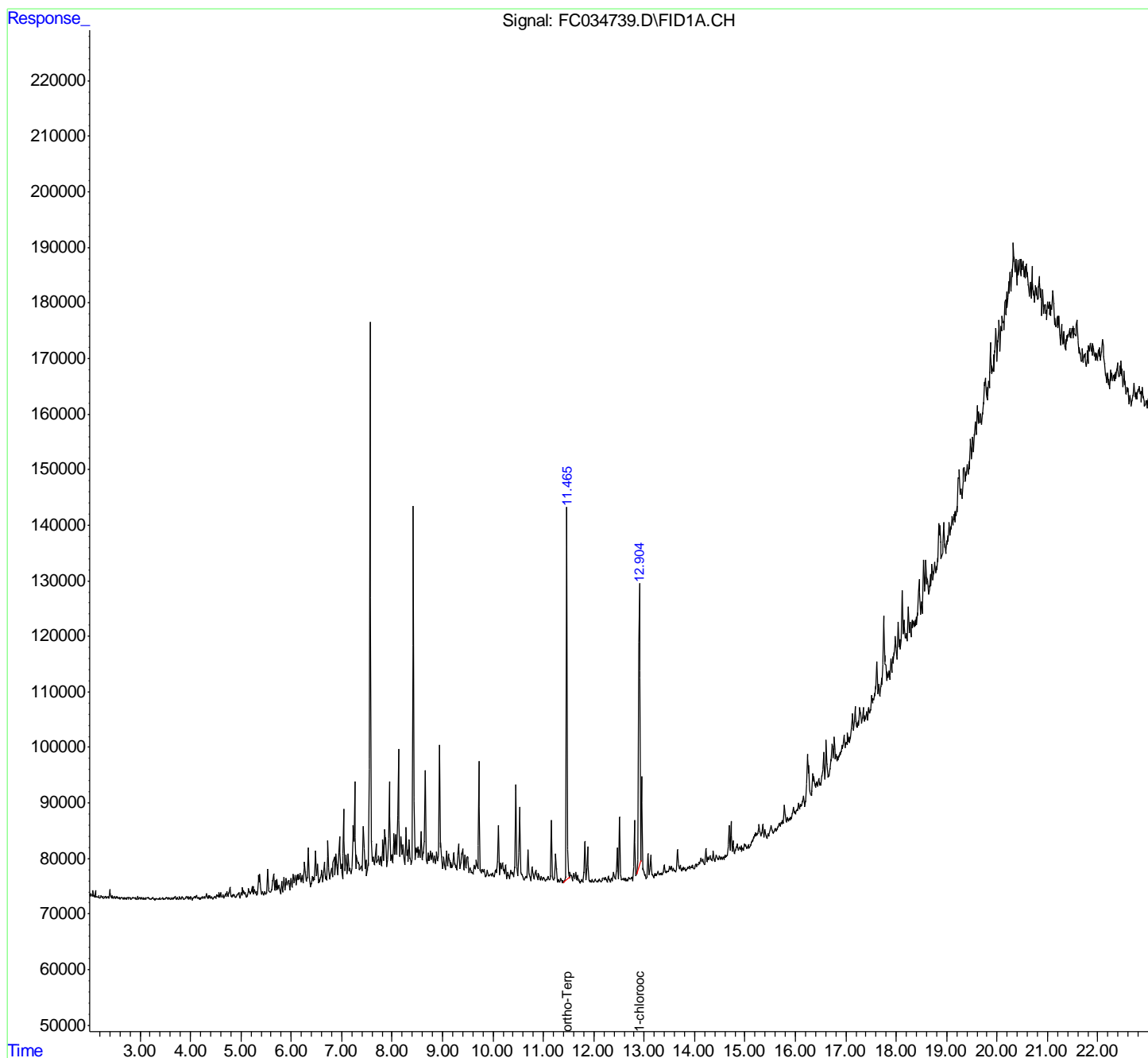
(m)=manual int.

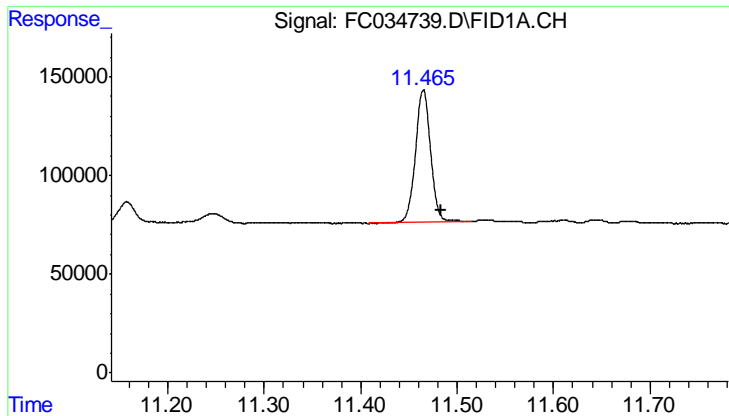
Data Path : Z:\pestpcbsrv\HPCHEM1\FID_C\Data\FC061518AL\
 Data File : FC034739.D
 Signal(s) : FID1A.CH
 Acq On : 15 Jun 2018 20:24
 Operator : UA/AJ
 Sample : J3241-07DL 5X
 Misc :
 ALS Vial : 6 Sample Multiplier: 1

Instrument :
 ECD_O
 ClientSampled :

Integration File: autoint1.e
 Quant Time: Jun 16 06:00:59 2018
 Quant Method : Z:\PESTPCBSRV\HPCHEM1\FID_C\Method\Alaphatic EPH 052418.M
 Quant Title : GC Extractables
 QLast Update : Fri May 25 02:29:20 2018
 Response via : Initial Calibration
 Integrator: ChemStation 6890 Scale Mode: Large solvent peaks clipped

Volume Inj. : 1 ul
 Signal Phase : Rxi-lms
 Signal Info : 20M x 0.18mm x 0.18um

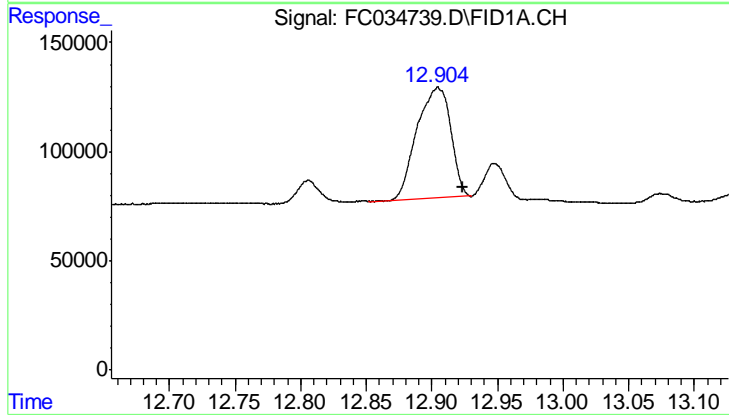




#9 ortho-Terphenyl (SURR)

R.T.: 11.465 min
Delta R.T.: -0.018 min
Response: 738220
Conc: 4.90 ug/ml

Instrument :
ECD_O
ClientSampleId :



#12 1-chlorooctadecane (SURR)

R.T.: 12.904 min
Delta R.T.: -0.019 min
Response: 903258
Conc: 7.62 ug/ml