

Data Path : Z:\pestpcbsrv\HPCHEM1\FID\_C\Data\FC061518AL\  
 Data File : FC034741.D  
 Signal(s) : FID1A.CH  
 Acq On : 15 Jun 2018 21:41  
 Operator : UA/AJ  
 Sample : J3241-09DL 20X  
 Misc :  
 ALS Vial : 8 Sample Multiplier: 1

Instrument :  
 ECD\_O  
 ClientSampleId :

Integration File: autoint1.e  
 Quant Time: Jun 16 06:01:13 2018  
 Quant Method : Z:\PESTPCBSRV\HPCHEM1\FID\_C\Method\Alaphatic EPH 052418.M  
 Quant Title : GC Extractables  
 QLast Update : Fri May 25 02:29:20 2018  
 Response via : Initial Calibration  
 Integrator: ChemStation 6890 Scale Mode: Large solvent peaks clipped

Volume Inj. : 1 ul  
 Signal Phase : Rxi-lms  
 Signal Info : 20M x 0.18mm x 0.18um

Compound	R.T.	Response	Conc Units
System Monitoring Compounds			
12) S 1-chlorooctadecane (S...	12.950	1155830	9.749 ug/ml
Spiked Amount	50.000	Recovery =	19.50%

Target Compounds

(f)=RT Delta > 1/2 Window

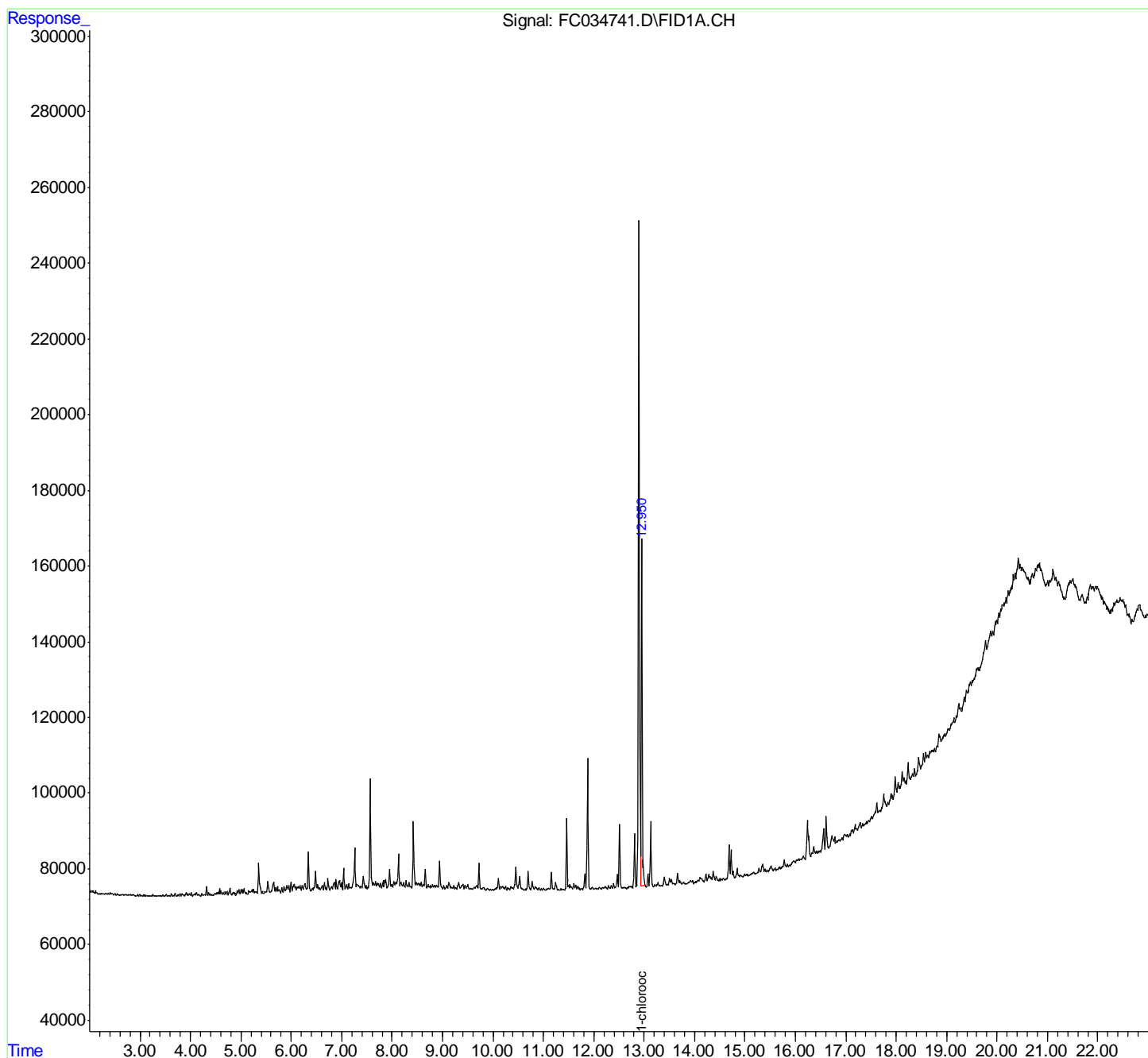
(m)=manual int.

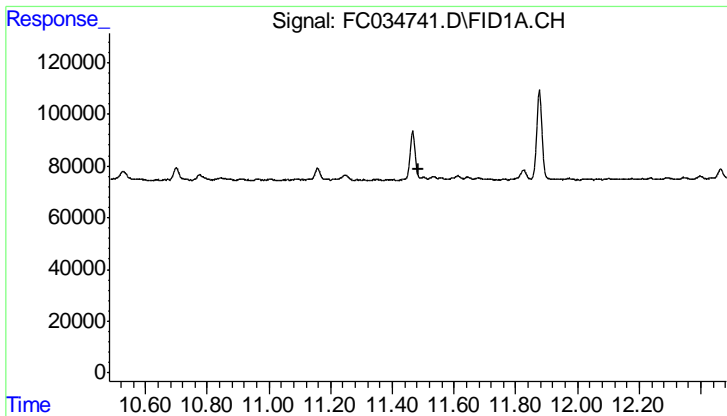
Data Path : Z:\pestpcbsrv\HPCHEM1\FID\_C\Data\FC061518AL\  
 Data File : FC034741.D  
 Signal(s) : FID1A.CH  
 Acq On : 15 Jun 2018 21:41  
 Operator : UA/AJ  
 Sample : J3241-09DL 20X  
 Misc :  
 ALS Vial : 8 Sample Multiplier: 1

Instrument :  
 ECD\_O  
 ClientSampled :

Integration File: autoint1.e  
 Quant Time: Jun 16 06:01:13 2018  
 Quant Method : Z:\PESTPCBSRV\HPCHEM1\FID\_C\Method\Alaphatic EPH 052418.M  
 Quant Title : GC Extractables  
 QLast Update : Fri May 25 02:29:20 2018  
 Response via : Initial Calibration  
 Integrator: ChemStation 6890 Scale Mode: Large solvent peaks clipped

Volume Inj. : 1 ul  
 Signal Phase : Rxi-lms  
 Signal Info : 20M x 0.18mm x 0.18um

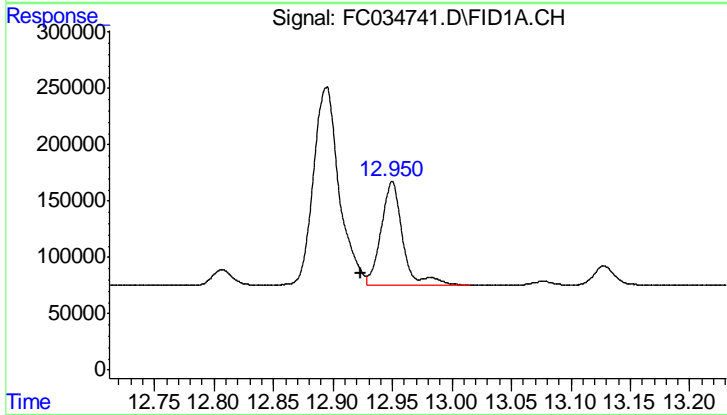




#9 ortho-Terphenyl (SURR)

R.T.: 0.000 min  
 Exp R.T.: 11.483 min  
 Response: 0  
 Conc: N.D.

Instrument :  
 ECD\_O  
 ClientSampled :



#12 1-chlorooctadecane (SURR)

R.T.: 12.950 min  
 Delta R.T.: 0.026 min  
 Response: 1155830  
 Conc: 9.75 ug/ml