

Data Path : Z:\pestpcbsrv\HPCHEM1\ECD_O\Data\PO061618\
 Data File : PO045871.D
 Signal(s) : Signal #1: ECD1A.CH Signal #2: ECD2B.CH
 Acq On : 16 Jun 2018 00:24
 Operator : SM/UA
 Sample : J3503-01
 Misc :
 ALS Vial : 26 Sample Multiplier: 1

Instrument :
 ECD_O
 ClientSampleId :
 WS-6

Integration File signal 1: autoint1.e
 Integration File signal 2: autoint2.e
 Quant Time: Jun 16 02:02:23 2018
 Quant Method : Z:\pestpcbsrv\HPCHEM1\ECD_O\methods\PO061418.M
 Quant Title : GC EXTRACTABLES
 QLast Update : Fri Jun 15 08:20:04 2018
 Response via : Initial Calibration
 Integrator: ChemStation 6890 Scale Mode: Small noise peaks clipped

Volume Inj. : 2 µl
 Signal #1 Phase : ZB-MR1 Signal #2 Phase: ZB-MR2
 Signal #1 Info : 30Mx0.32mmx 0.50µ Signal #2 Info : 30M x 0.32mm x 0.25µm

Compound	RT#1	RT#2	Resp#1	Resp#2	ng/ml	ng/ml

System Monitoring Compounds						
1) SA Tetrachlo...	4.391	3.623	4194957	2017392	21.381	21.526
2) SA Decachlor...	10.054	8.599	3717736	1491290	18.445	18.879

Target Compounds

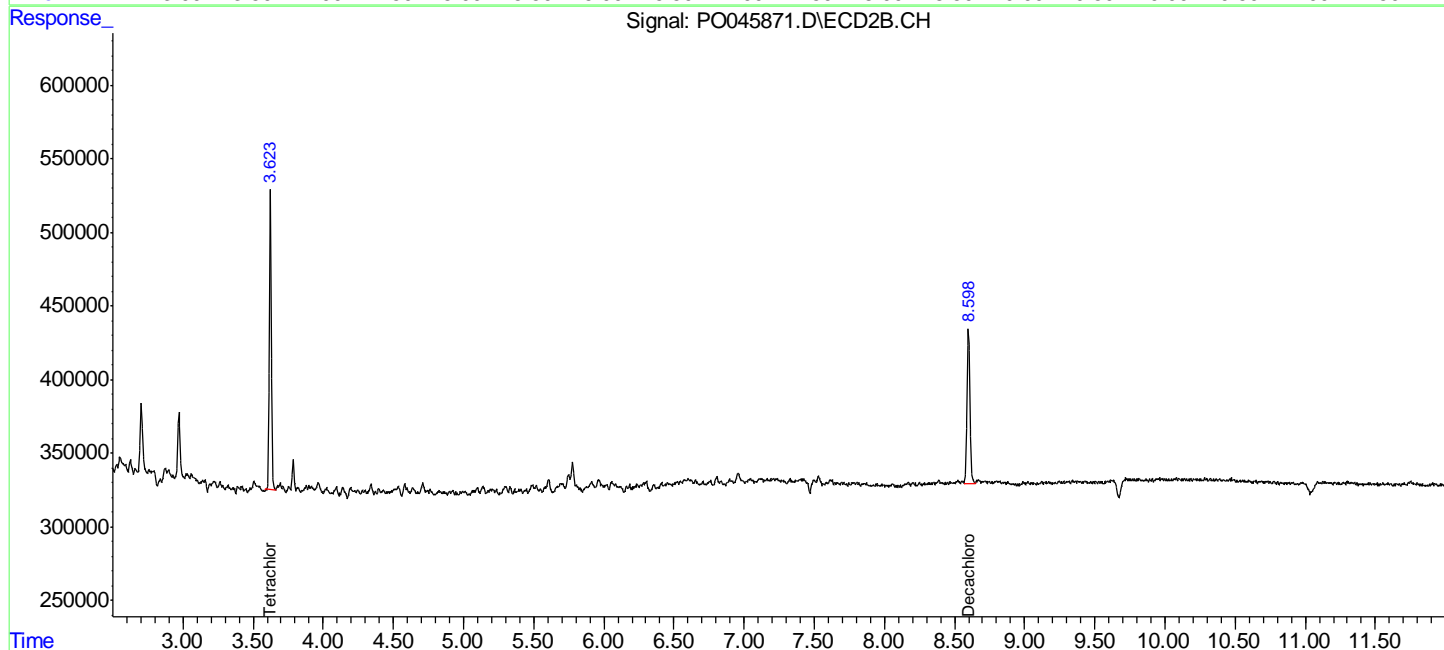
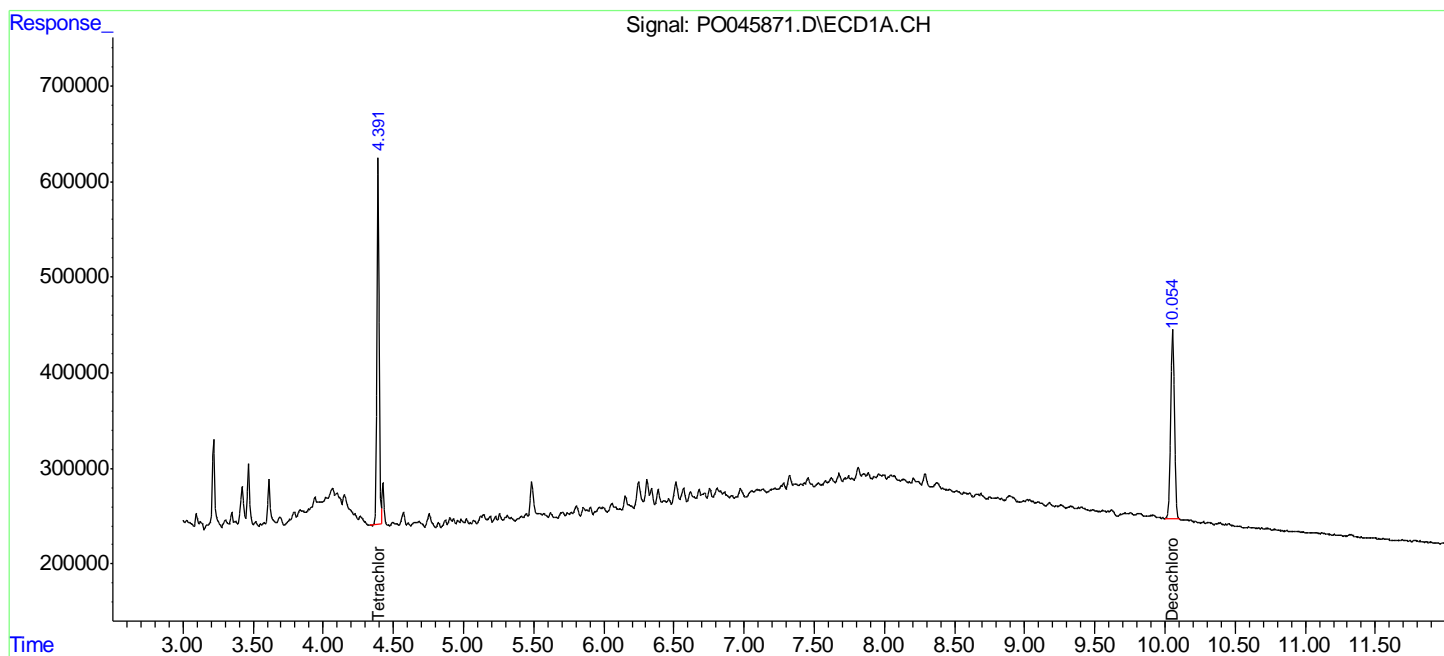
(f)=RT Delta > 1/2 Window (#)=Amounts differ by > 25% (m)=manual int.

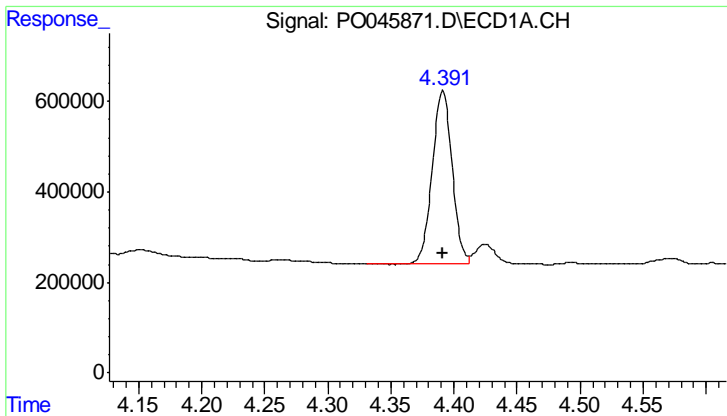
Data Path : Z:\pestpcbsrv\HPCHEM1\ECD_O\Data\PO061618\
 Data File : PO045871.D
 Signal(s) : Signal #1: ECD1A.CH Signal #2: ECD2B.CH
 Acq On : 16 Jun 2018 00:24
 Operator : SM/UA
 Sample : J3503-01
 Misc :
 ALS Vial : 26 Sample Multiplier: 1

Instrument :
 ECD_O
 ClientSampleId :
 WS-6

Integration File signal 1: autoint1.e
 Integration File signal 2: autoint2.e
 Quant Time: Jun 16 02:02:23 2018
 Quant Method : Z:\pestpcbsrv\HPCHEM1\ECD_O\methods\PO061418.M
 Quant Title : GC EXTRACTABLES
 QLast Update : Fri Jun 15 08:20:04 2018
 Response via : Initial Calibration
 Integrator: ChemStation 6890 Scale Mode: Small noise peaks clipped

Volume Inj. : 2 µl
 Signal #1 Phase : ZB-MR1 Signal #2 Phase: ZB-MR2
 Signal #1 Info : 30Mx0.32mmx 0.50µ Signal #2 Info : 30M x 0.32mm x 0.25µm

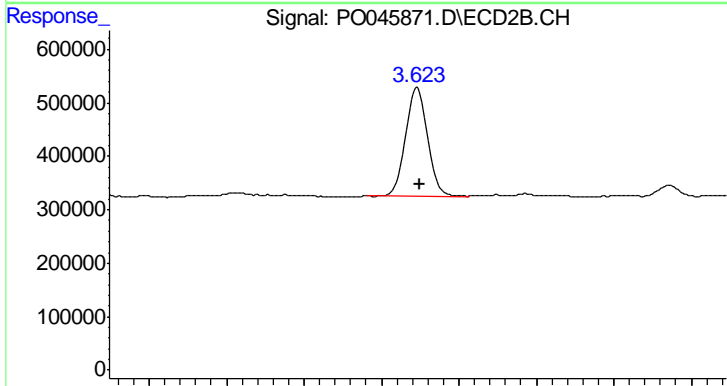




#1 Tetrachloro-m-xylene

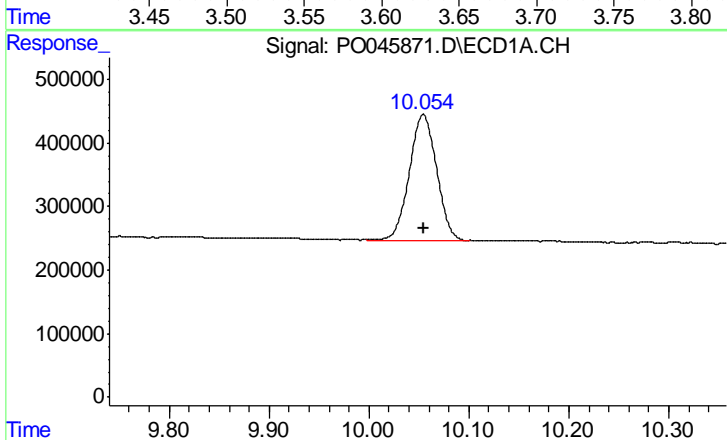
R.T.: 4.391 min
 Delta R.T.: 0.000 min
 Response: 4194957
 Conc: 21.38 ng/ml

Instrument :
 ECD_O
 ClientSampleId :
 WS-6



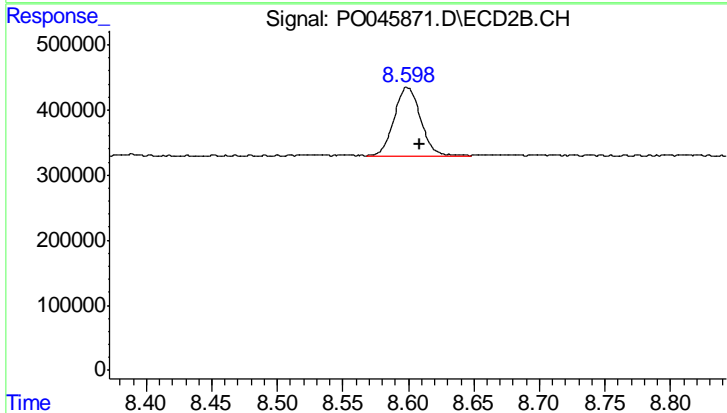
#1 Tetrachloro-m-xylene

R.T.: 3.623 min
 Delta R.T.: -0.002 min
 Response: 2017392
 Conc: 21.53 ng/ml



#2 Decachlorobiphenyl

R.T.: 10.054 min
 Delta R.T.: 0.000 min
 Response: 3717736
 Conc: 18.45 ng/ml



#2 Decachlorobiphenyl

R.T.: 8.599 min
 Delta R.T.: -0.009 min
 Response: 1491290
 Conc: 18.88 ng/ml