

Data Path : Z:\pestpcbsrv\HPCHEM1\ECD\_O\Data\P0061819\  
 Data File : P0057212.D  
 Signal(s) : Signal #1: ECD1A.CH Signal #2: ECD2B.CH  
 Acq On : 18 Jun 2019 10:40  
 Operator : SM/SJ  
 Sample : PB120597BSD  
 Misc :  
 ALS Vial : 8 Sample Multiplier: 1

**Instrument :**  
 ECD\_O  
**Client Sampled :**  
 PB120597BSD

**Manual Integrations**  
**APPROVED**  
 Ankita  
 6/19/2019 1:37:11 PM

Integration File signal 1: autoint1.e  
 Integration File signal 2: autoint2.e  
 Quant Time: Jun 19 01:18:38 2019  
 Quant Method : Z:\pestpcbsrv\HPCHEM1\ECD\_O\methods\P0052319.M  
 Quant Title : GC EXTRACTABLES  
 QLast Update : Fri May 24 00:11:05 2019  
 Response via : Initial Calibration  
 Integrator: ChemStation 6890 Scale Mode: Small noise peaks clipped

Volume Inj. : 2 µl  
 Signal #1 Phase : ZB-MR1 Signal #2 Phase: ZB-MR2  
 Signal #1 Info : 30Mx0.32mmx 0.50µ Signal #2 Info : 30M x 0.32mm x 0.25µm

Compound	RT#1	RT#2	Resp#1	Resp#2	ng/ml	ng/ml
-----						
System Monitoring Compounds						
1) SA Tetrachlo...	4.243	3.559	906326	745586	23.674	22.608
2) SA Decachlor...	9.802	8.488	1068819	701272	21.775	19.667
Target Compounds						
3) L1 AR-1016-1	5.403	4.627	417048	272450	231.871m	216.490m
4) L1 AR-1016-2	5.425	4.645	560904	393658	223.372m	218.502
5) L1 AR-1016-3	5.486	4.820	367540	213357	228.670	216.399
6) L1 AR-1016-4	5.584	4.861	300142	178280	228.802m	215.356
7) L1 AR-1016-5	5.875	5.070	308987	233085	223.643m	217.284m
31) L7 AR-1260-1	6.988	6.091	586495	435564	228.548	217.740
32) L7 AR-1260-2	7.244	6.279	736665	557033	243.593m	225.980
33) L7 AR-1260-3	7.600	6.431	586693	494938	243.537	220.636
34) L7 AR-1260-4	7.826	6.896	594145	427449	226.841	229.685m
35) L7 AR-1260-5	8.132	7.139	1122675	954601	234.767m	221.365
-----						

(f)=RT Delta > 1/2 Window (#)=Amounts differ by > 25% (m)=manual int.

Data Path : Z:\pestpcbsrv\HPCHEM1\ECD\_O\Data\PO061819\  
 Data File : PO057212.D  
 Signal(s) : Signal #1: ECD1A.CH Signal #2: ECD2B.CH  
 Acq On : 18 Jun 2019 10:40  
 Operator : SM/SJ  
 Sample : PB120597BSD  
 Misc :  
 ALS Vial : 8 Sample Multiplier: 1

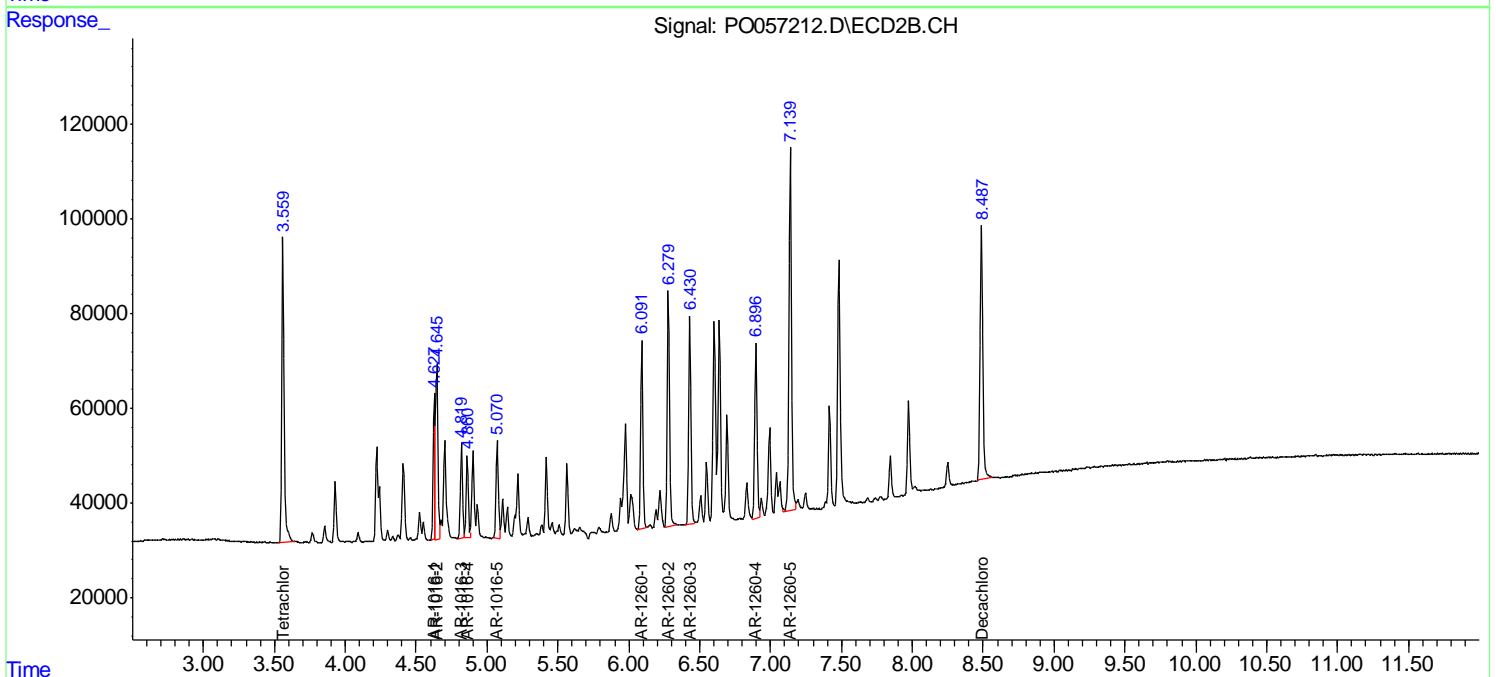
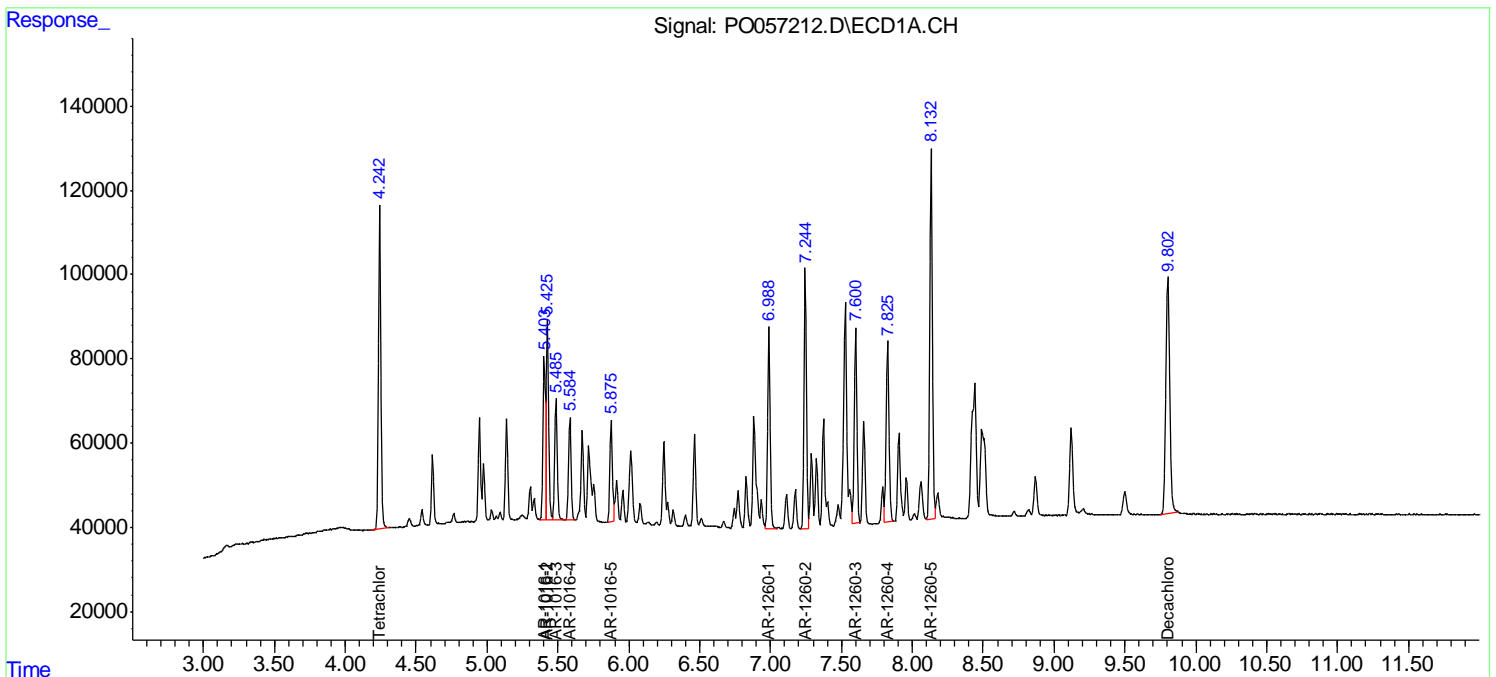
Instrument :  
 ECD\_O  
 Client Sampled :  
 PB120597BSD

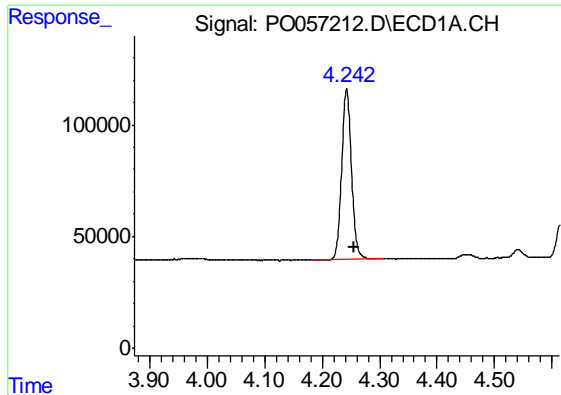
Manual Integrations  
 APPROVED

Ankita  
 6/19/2019 1:37:11 PM

Integration File signal 1: autoint1.e  
 Integration File signal 2: autoint2.e  
 Quant Time: Jun 19 01:18:38 2019  
 Quant Method : Z:\pestpcbsrv\HPCHEM1\ECD\_O\methods\PO052319.M  
 Quant Title : GC EXTRACTABLES  
 QLast Update : Fri May 24 00:11:05 2019  
 Response via : Initial Calibration  
 Integrator: ChemStation 6890 Scale Mode: Small noise peaks clipped

Volume Inj. : 2 µl  
 Signal #1 Phase : ZB-MR1 Signal #2 Phase: ZB-MR2  
 Signal #1 Info : 30Mx0.32mmx 0.50µ Signal #2 Info : 30M x 0.32mm x 0.25µm





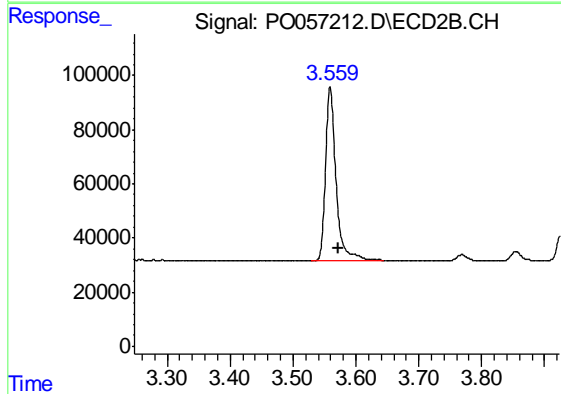
#1 Tetrachloro-m-xylene

R.T.: 4.243 min  
 Delta R.T.: -0.013 min  
 Response: 906326  
 Conc: 23.67 ng/ml

Instrument :  
 ECD\_O  
 ClientSampled :  
 PB120597BSD

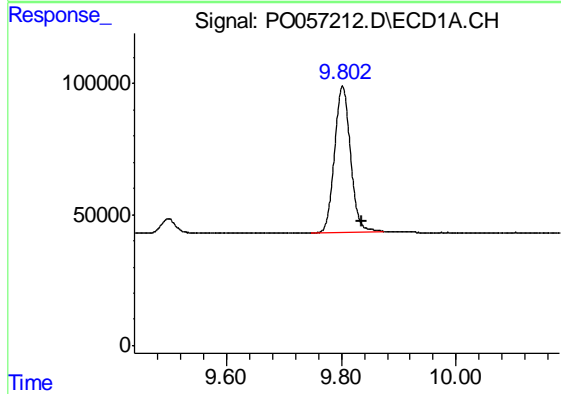
Manual Integrations  
 APPROVED

Ankita  
 6/19/2019 1:37:11 PM



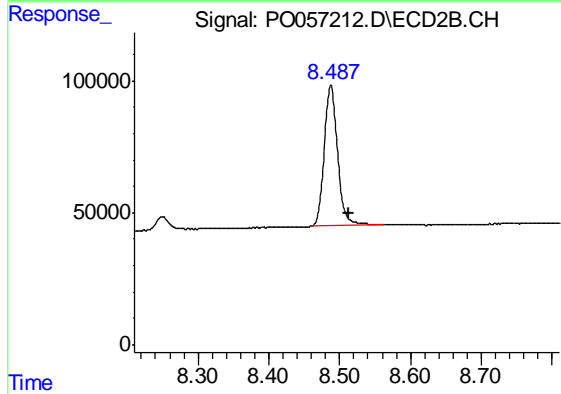
#1 Tetrachloro-m-xylene

R.T.: 3.559 min  
 Delta R.T.: -0.014 min  
 Response: 745586  
 Conc: 22.61 ng/ml



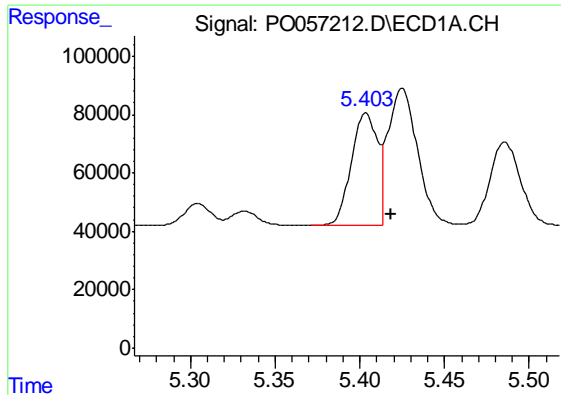
#2 Decachlorobiphenyl

R.T.: 9.802 min  
 Delta R.T.: -0.034 min  
 Response: 1068819  
 Conc: 21.78 ng/ml



#2 Decachlorobiphenyl

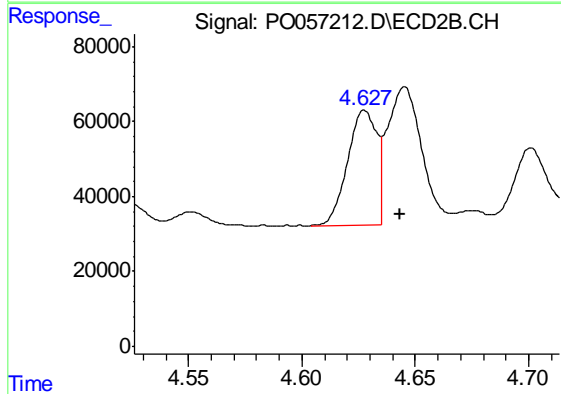
R.T.: 8.488 min  
 Delta R.T.: -0.025 min  
 Response: 701272  
 Conc: 19.67 ng/ml



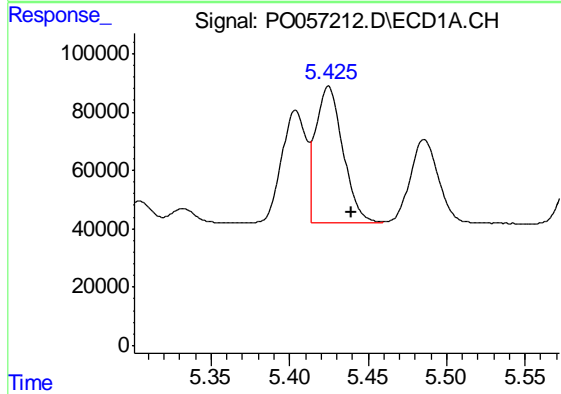
#3 AR-1016-1  
 R.T.: 5.403 min  
 Delta R.T.: -0.015 min  
 Response: 417048  
 Conc: 231.87 ng/ml m

**Instrument :**  
 ECD\_O  
**ClientSampled :**  
 PB120597BSD

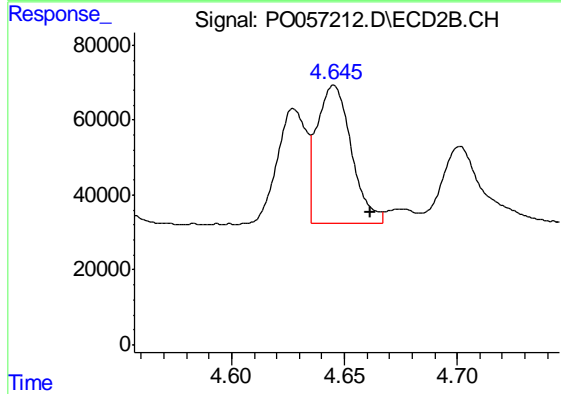
**Manual Integrations**  
**APPROVED**  
 Ankita  
 6/19/2019 1:37:11 PM



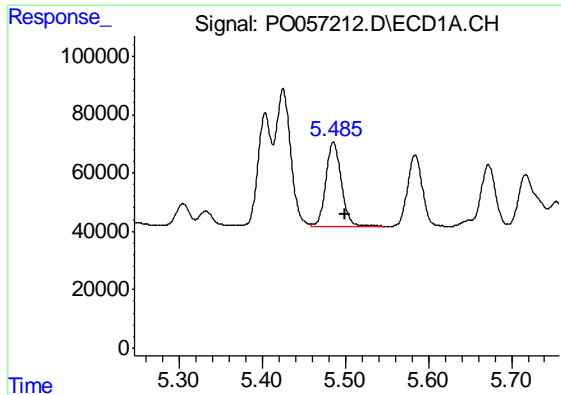
#3 AR-1016-1  
 R.T.: 4.627 min  
 Delta R.T.: -0.016 min  
 Response: 272450  
 Conc: 216.49 ng/ml m



#4 AR-1016-2  
 R.T.: 5.425 min  
 Delta R.T.: -0.015 min  
 Response: 560904  
 Conc: 223.37 ng/ml m



#4 AR-1016-2  
 R.T.: 4.645 min  
 Delta R.T.: -0.016 min  
 Response: 393658  
 Conc: 218.50 ng/ml



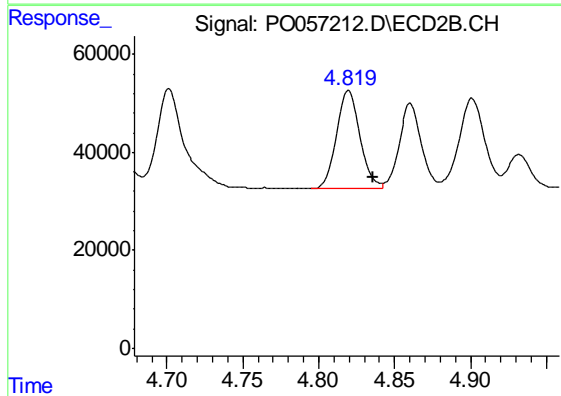
#5 AR-1016-3

R.T.: 5.486 min  
 Delta R.T.: -0.014 min  
 Response: 367540  
 Conc: 228.67 ng/ml

Instrument :  
 ECD\_O  
 ClientSampleId :  
 PB120597BSD

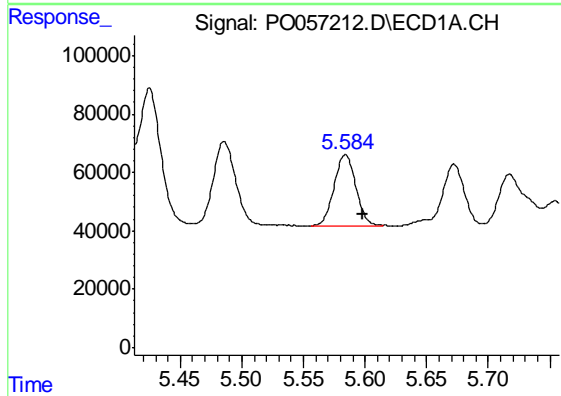
Manual Integrations  
 APPROVED

Ankita  
 6/19/2019 1:37:11 PM



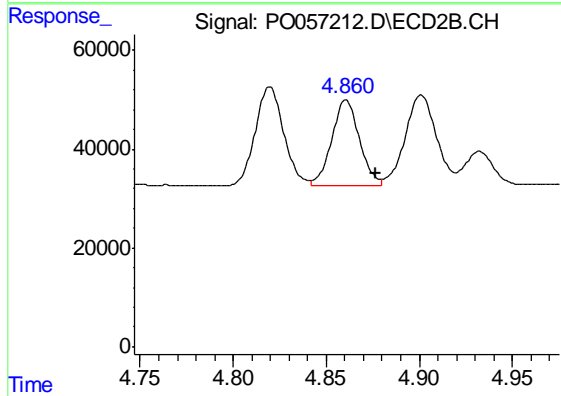
#5 AR-1016-3

R.T.: 4.820 min  
 Delta R.T.: -0.016 min  
 Response: 213357  
 Conc: 216.40 ng/ml



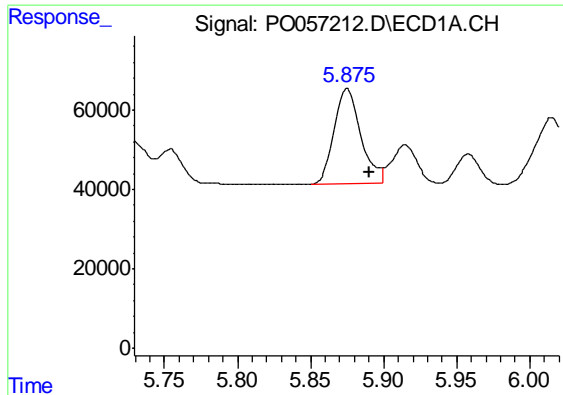
#6 AR-1016-4

R.T.: 5.584 min  
 Delta R.T.: -0.015 min  
 Response: 300142  
 Conc: 228.80 ng/ml m



#6 AR-1016-4

R.T.: 4.861 min  
 Delta R.T.: -0.016 min  
 Response: 178280  
 Conc: 215.36 ng/ml



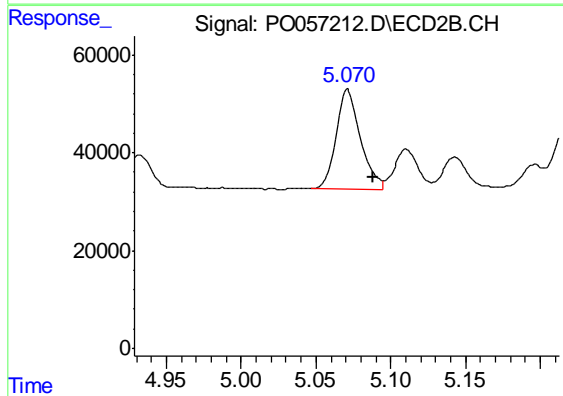
#7 AR-1016-5

R.T.: 5.875 min  
 Delta R.T.: -0.015 min  
 Response: 308987  
 Conc: 223.64 ng/ml m

Instrument :  
 ECD\_O  
 ClientSampled :  
 PB120597BSD

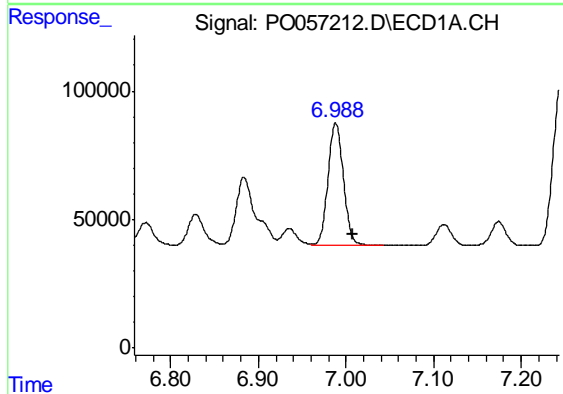
Manual Integrations  
 APPROVED

Ankita  
 6/19/2019 1:37:11 PM



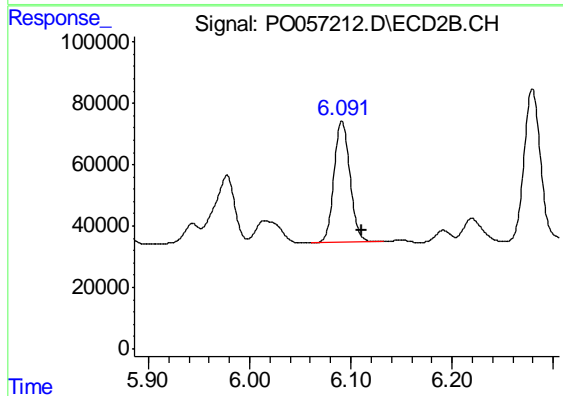
#7 AR-1016-5

R.T.: 5.070 min  
 Delta R.T.: -0.018 min  
 Response: 233085  
 Conc: 217.28 ng/ml m



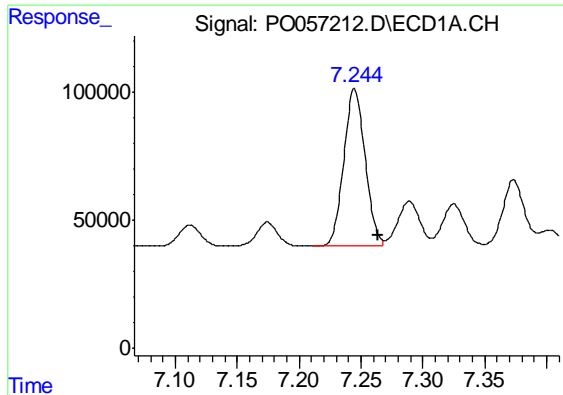
#31 AR-1260-1

R.T.: 6.988 min  
 Delta R.T.: -0.019 min  
 Response: 586495  
 Conc: 228.55 ng/ml



#31 AR-1260-1

R.T.: 6.091 min  
 Delta R.T.: -0.019 min  
 Response: 435564  
 Conc: 217.74 ng/ml



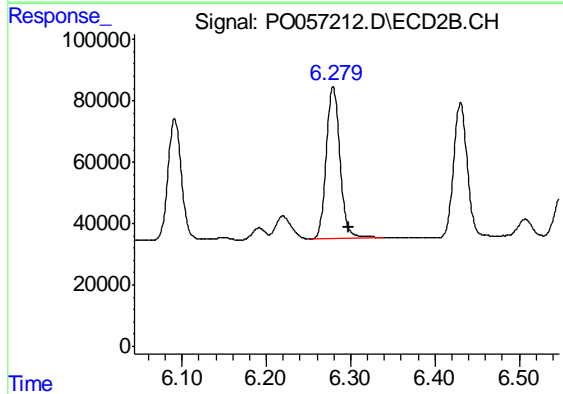
#32 AR-1260-2

R.T.: 7.244 min  
 Delta R.T.: -0.020 min  
 Response: 736665  
 Conc: 243.59 ng/ml m

Instrument :  
 ECD\_O  
 ClientSampled :  
 PB120597BSD

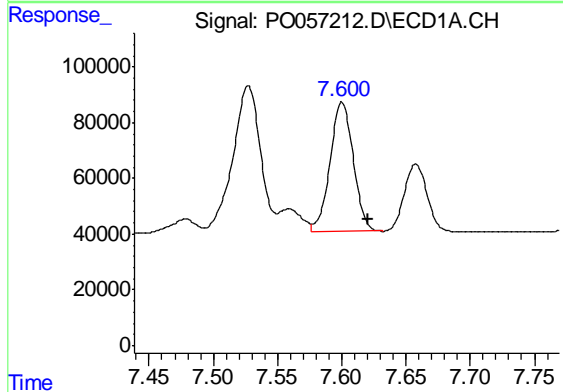
Manual Integrations  
 APPROVED

Ankita  
 6/19/2019 1:37:11 PM



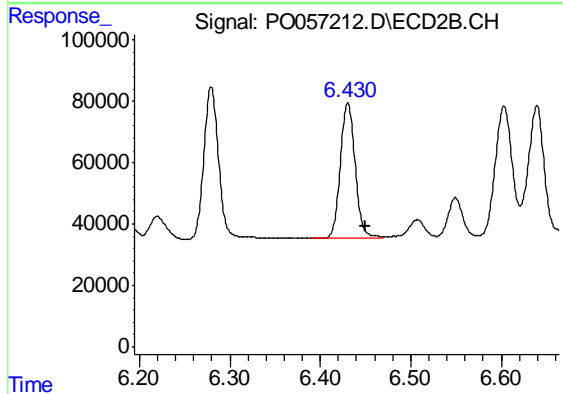
#32 AR-1260-2

R.T.: 6.279 min  
 Delta R.T.: -0.018 min  
 Response: 557033  
 Conc: 225.98 ng/ml



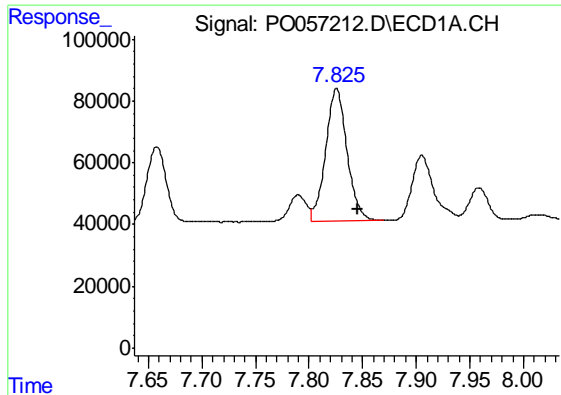
#33 AR-1260-3

R.T.: 7.600 min  
 Delta R.T.: -0.020 min  
 Response: 586693  
 Conc: 243.54 ng/ml



#33 AR-1260-3

R.T.: 6.431 min  
 Delta R.T.: -0.019 min  
 Response: 494938  
 Conc: 220.64 ng/ml

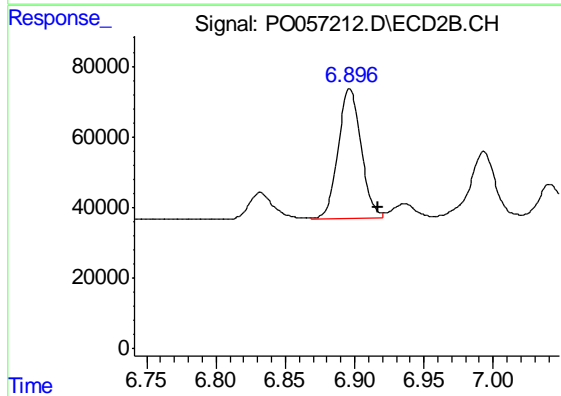


#34 AR-1260-4

R.T.: 7.826 min  
 Delta R.T.: -0.019 min  
 Response: 594145  
 Conc: 226.84 ng/ml

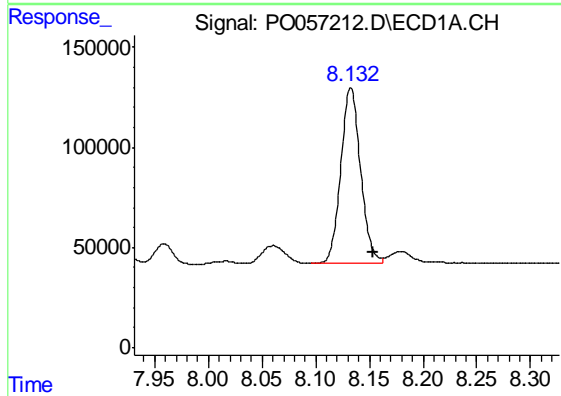
**Instrument :**  
 ECD\_O  
**ClientSampled :**  
 PB120597BSD

**Manual Integrations**  
**APPROVED**  
 Ankita  
 6/19/2019 1:37:11 PM



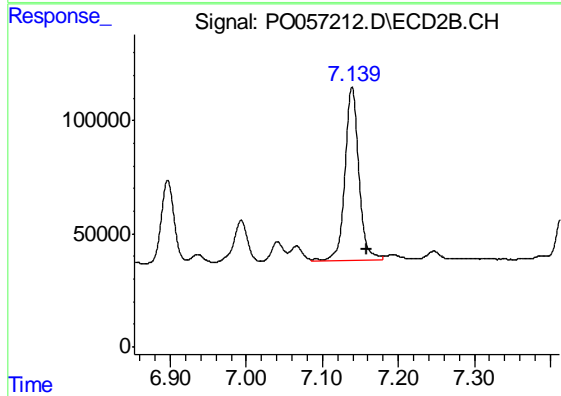
#34 AR-1260-4

R.T.: 6.896 min  
 Delta R.T.: -0.021 min  
 Response: 427449  
 Conc: 229.69 ng/ml m



#35 AR-1260-5

R.T.: 8.132 min  
 Delta R.T.: -0.021 min  
 Response: 1122675  
 Conc: 234.77 ng/ml m



#35 AR-1260-5

R.T.: 7.139 min  
 Delta R.T.: -0.019 min  
 Response: 954601  
 Conc: 221.37 ng/ml