

Data Path : Z:\pestpcbsrv\HPCHEM1\ECD_O\Data\P0061825\
 Data File : P0111689.D
 Signal(s) : Signal #1: ECD1A.ch Signal #2: ECD2B.ch
 Acq On : 18 Jun 2025 16:17
 Operator : YP/AJ
 Sample : AR1248CCC500
 Misc :
 ALS Vial : 5 Sample Multiplier: 1

Instrument :
 ECD_O
ClientSampleId :
 AR1248CCC500

Manual Integrations
APPROVED
 Reviewed By :Yogesh Patel 06/19/2025
 Supervised By :mohammad ahmed 06/20/2025

Integration File signal 1: autoint1.e
 Integration File signal 2: autoint2.e
 Quant Time: Jun 19 01:33:24 2025
 Quant Method : Z:\pestpcbsrv\HPCHEM1\ECD_O\methods\P0061125.M
 Quant Title : GC EXTRACTABLES
 QLast Update : Thu Jun 12 06:25:26 2025
 Response via : Initial Calibration
 Integrator: ChemStation

Volume Inj. : 2 µl
 Signal #1 Phase : ZB-MR1 Signal #2 Phase: ZB-MR2
 Signal #1 Info : 30Mx0.32mmx 0.50µ Signal #2 Info : 30M x 0.32mm x 0.25µm

Compound	RT#1	RT#2	Resp#1	Resp#2	ng/ml	ng/ml

System Monitoring Compounds						
1) SA Tetrachlo...	3.679	3.674	336.9E6	309.7E6	58.487	55.128
2) SA Decachlor...	8.715	8.662	267.4E6	95555286	50.940	53.753
Target Compounds						
21) L5 AR-1248-1	4.767	4.751	86165486	70874803	534.308	531.756
22) L5 AR-1248-2	5.005	4.987	105.2E6	90399821	487.954	507.421
23) L5 AR-1248-3	5.219	5.029	152.9E6	100.2E6	566.663m	529.081
24) L5 AR-1248-4	5.573	5.199	213.6E6	126.5E6	534.200	553.997
25) L5 AR-1248-5	5.614	5.590	149.9E6	120.6E6	533.889	554.017

(f)=RT Delta > 1/2 Window (#)=Amounts differ by > 25% (m)=manual int.

Data Path : Z:\pestpcbsrv\HPCHEM1\ECD_O\Data\PO061825\
 Data File : PO111689.D
 Signal(s) : Signal #1: ECD1A.ch Signal #2: ECD2B.ch
 Acq On : 18 Jun 2025 16:17
 Operator : YP/AJ
 Sample : AR1248CCC500
 Misc :
 ALS Vial : 5 Sample Multiplier: 1

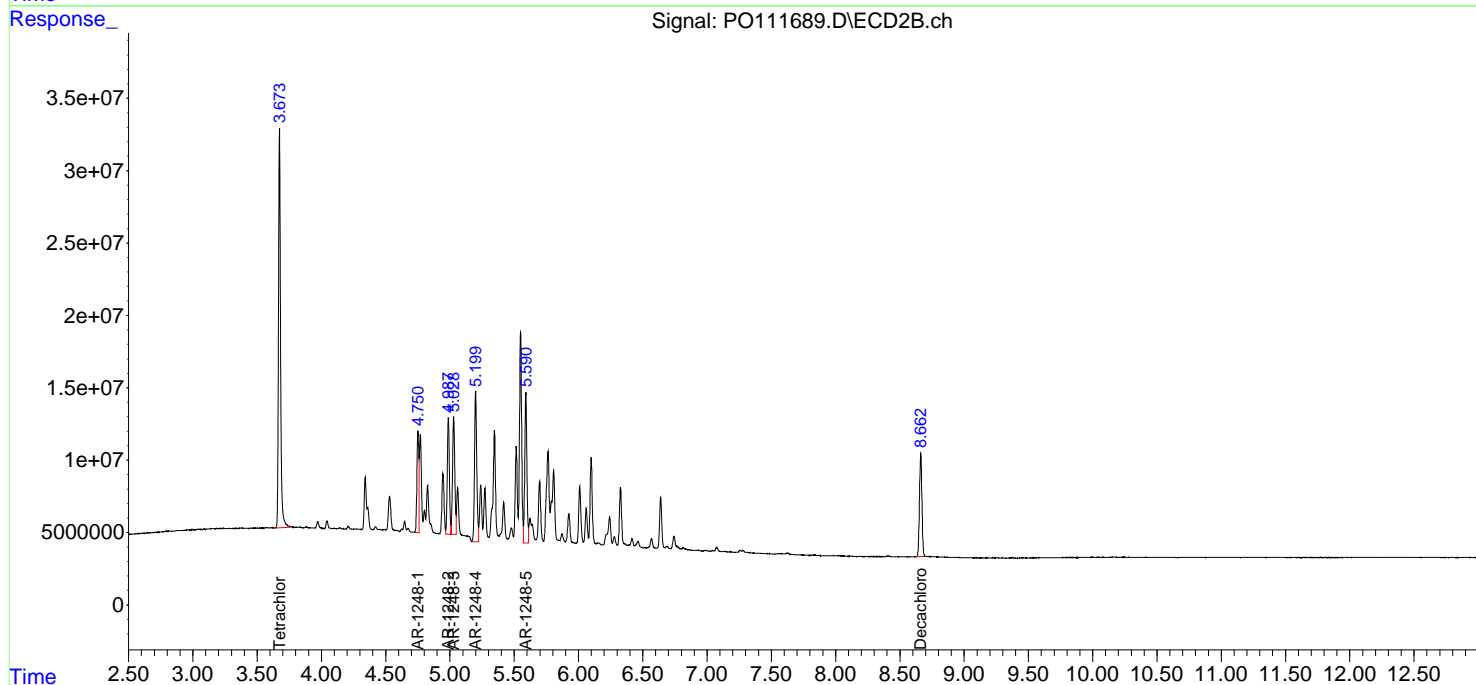
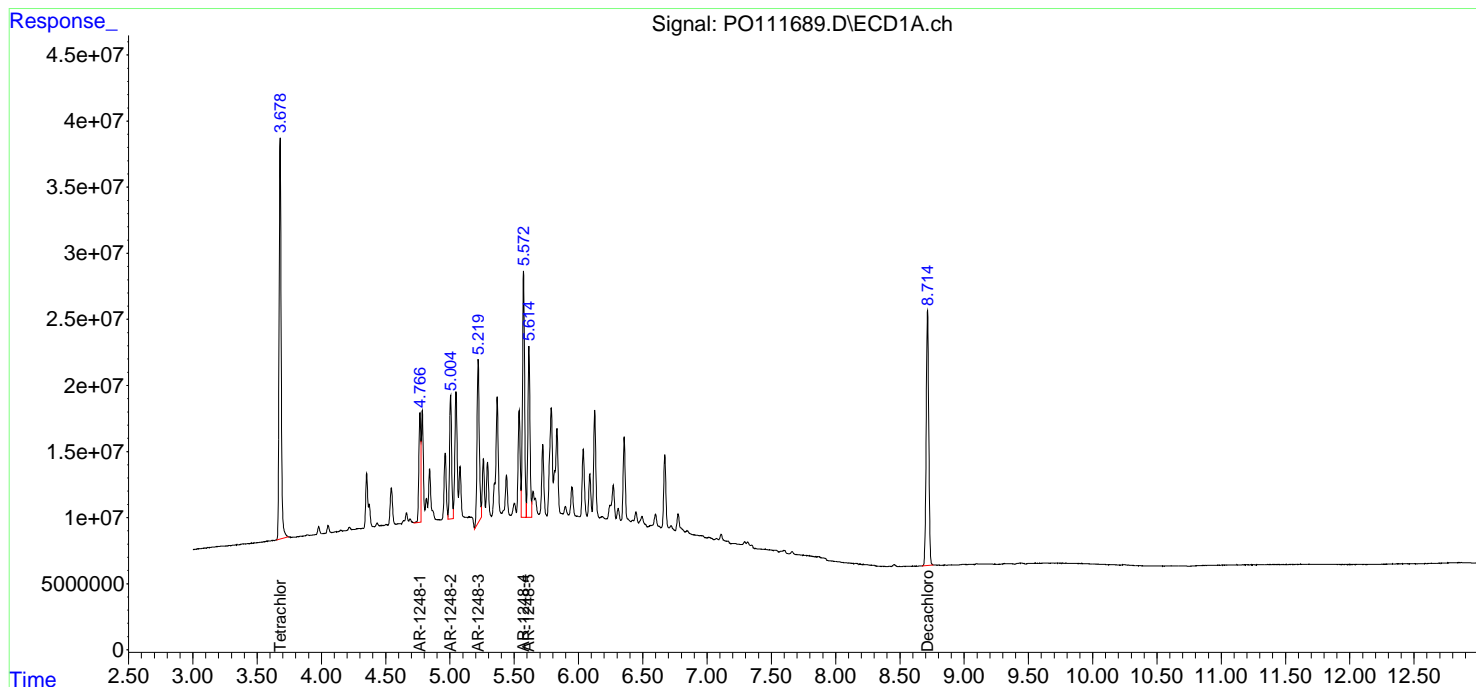
Instrument :
 ECD_O
 ClientSampleId :
 AR1248CCC500

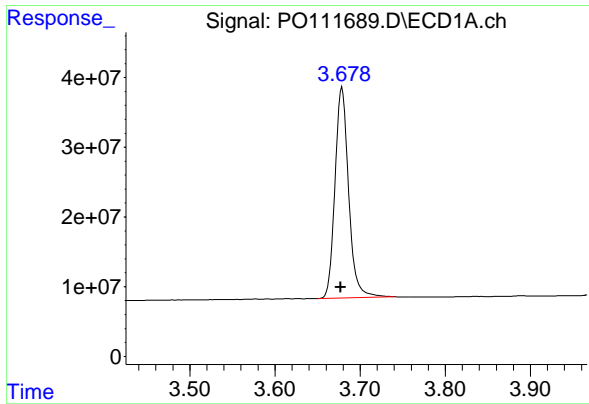
Manual Integrations
APPROVED

Reviewed By :Yogesh Patel 06/19/2025
 Supervised By :mohammad ahmed 06/20/2025

Integration File signal 1: autoint1.e
 Integration File signal 2: autoint2.e
 Quant Time: Jun 19 01:33:24 2025
 Quant Method : Z:\pestpcbsrv\HPCHEM1\ECD_O\methods\PO061125.M
 Quant Title : GC EXTRACTABLES
 QLast Update : Thu Jun 12 06:25:26 2025
 Response via : Initial Calibration
 Integrator: ChemStation

Volume Inj. : 2 µl
 Signal #1 Phase : ZB-MR1 Signal #2 Phase: ZB-MR2
 Signal #1 Info : 30Mx0.32mmx 0.50µm Signal #2 Info : 30M x 0.32mm x 0.25µm





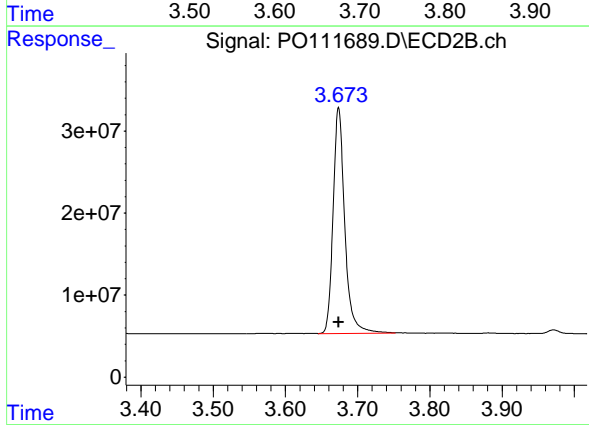
#1 Tetrachloro-m-xylene

R.T.: 3.679 min
 Delta R.T.: 0.002 min
 Response: 336853582
 Conc: 58.49 ng/ml

Instrument :
 ECD_O
 ClientSampleId :
 AR1248CCC500

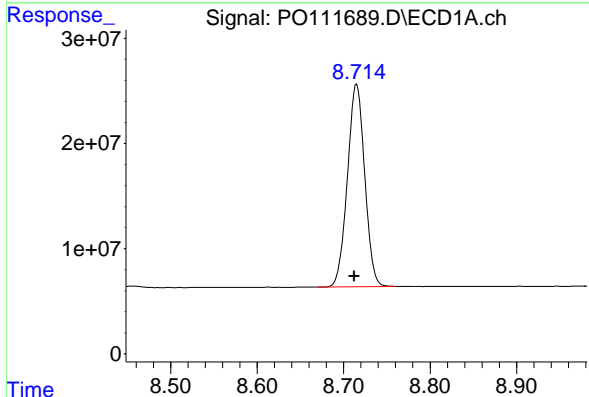
Manual Integrations
 APPROVED

Reviewed By :Yogesh Patel 06/19/2025
 Supervised By :mohammad ahmed 06/20/2025



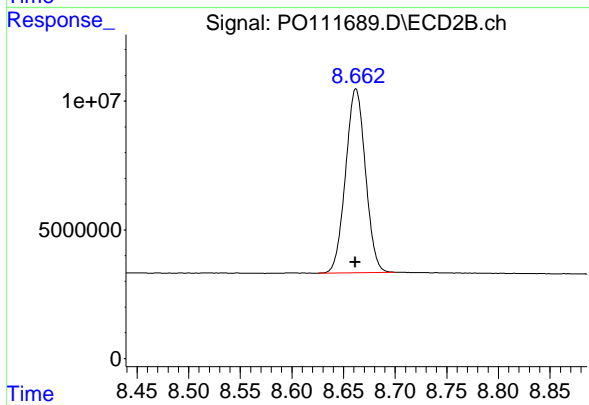
#1 Tetrachloro-m-xylene

R.T.: 3.674 min
 Delta R.T.: 0.000 min
 Response: 309667012
 Conc: 55.13 ng/ml



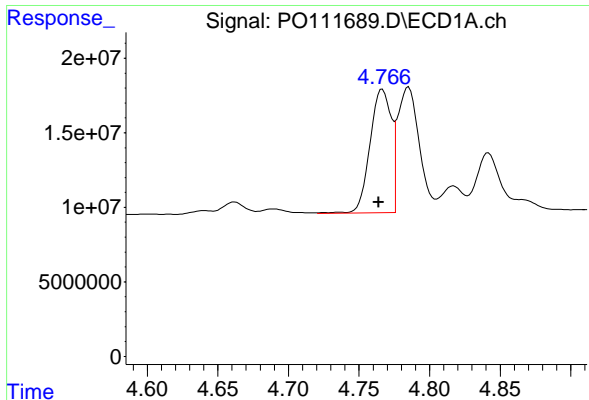
#2 Decachlorobiphenyl

R.T.: 8.715 min
 Delta R.T.: 0.003 min
 Response: 267397263
 Conc: 50.94 ng/ml



#2 Decachlorobiphenyl

R.T.: 8.662 min
 Delta R.T.: 0.000 min
 Response: 95555286
 Conc: 53.75 ng/ml



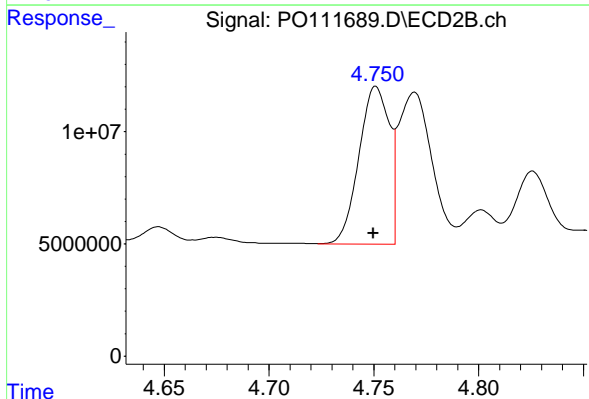
#21 AR-1248-1

R.T.: 4.767 min
 Delta R.T.: 0.003 min
 Response: 86165486
 Conc: 534.31 ng/ml

Instrument :
 ECD_O
 ClientSampleId :
 AR1248CCC500

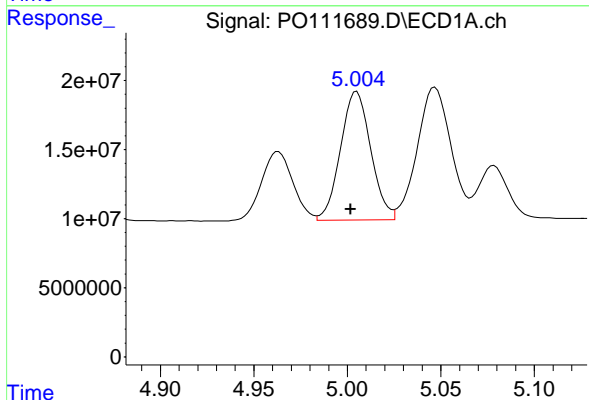
Manual Integrations
 APPROVED

Reviewed By :Yogesh Patel 06/19/2025
 Supervised By :mohammad ahmed 06/20/2025



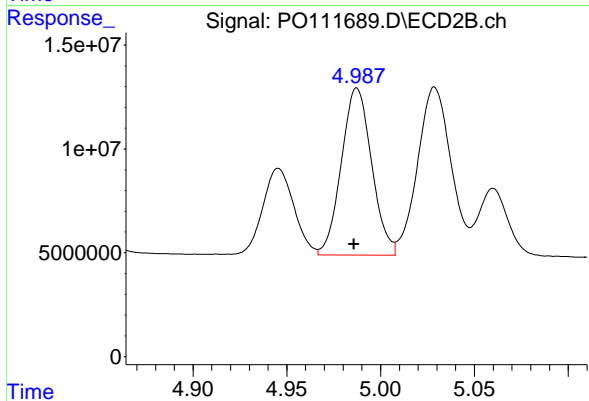
#21 AR-1248-1

R.T.: 4.751 min
 Delta R.T.: 0.001 min
 Response: 70874803
 Conc: 531.76 ng/ml



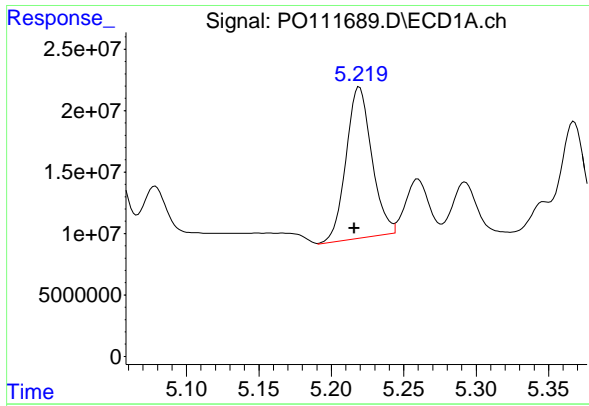
#22 AR-1248-2

R.T.: 5.005 min
 Delta R.T.: 0.003 min
 Response: 105205471
 Conc: 487.95 ng/ml



#22 AR-1248-2

R.T.: 4.987 min
 Delta R.T.: 0.002 min
 Response: 90399821
 Conc: 507.42 ng/ml



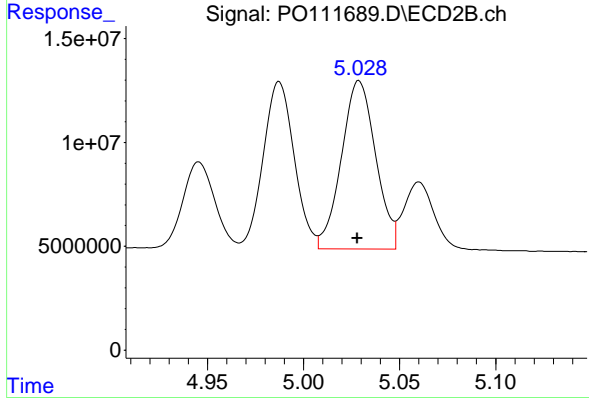
#23 AR-1248-3

R.T.: 5.219 min
 Delta R.T.: 0.003 min
 Response: 152851058
 Conc: 566.66 ng/ml

Instrument :
 ECD_O
 ClientSampleId :
 AR1248CCC500

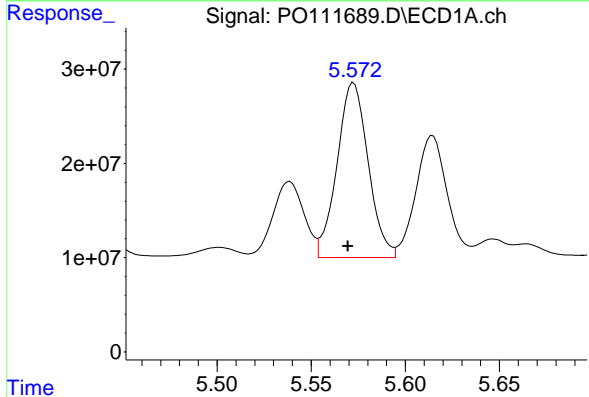
Manual Integrations
 APPROVED

Reviewed By :Yogesh Patel 06/19/2025
 Supervised By :mohammad ahmed 06/20/2025



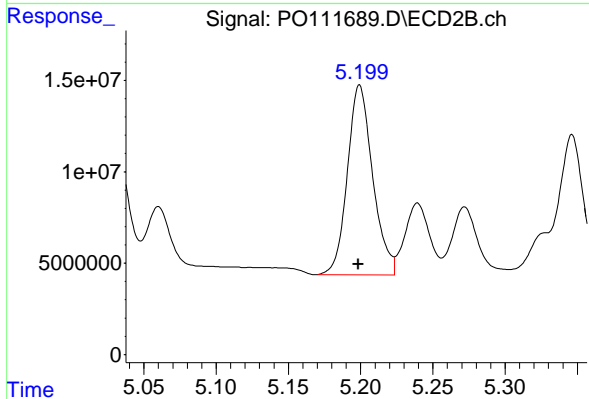
#23 AR-1248-3

R.T.: 5.029 min
 Delta R.T.: 0.000 min
 Response: 100227905
 Conc: 529.08 ng/ml



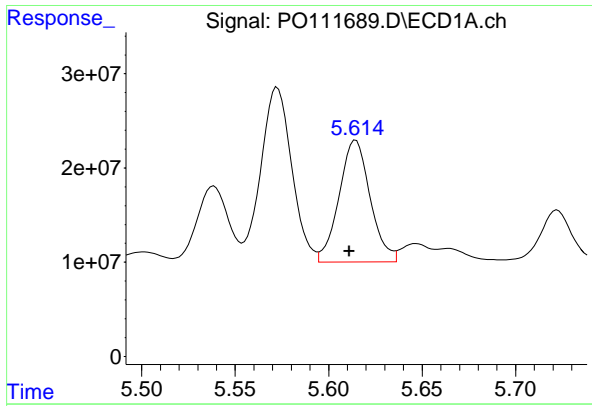
#24 AR-1248-4

R.T.: 5.573 min
 Delta R.T.: 0.003 min
 Response: 213574862
 Conc: 534.20 ng/ml



#24 AR-1248-4

R.T.: 5.199 min
 Delta R.T.: 0.000 min
 Response: 126490629
 Conc: 554.00 ng/ml



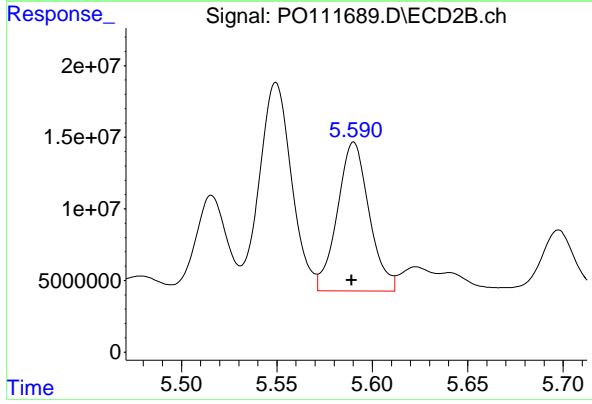
#25 AR-1248-5

R.T.: 5.614 min
 Delta R.T.: 0.003 min
 Response: 149921763
 Conc: 533.89 ng/ml

Instrument :
 ECD_O
 ClientSampleId :
 AR1248CCC500

Manual Integrations
 APPROVED

Reviewed By :Yogesh Patel 06/19/2025
 Supervised By :mohammad ahmed 06/20/2025



#25 AR-1248-5

R.T.: 5.590 min
 Delta R.T.: 0.001 min
 Response: 120645517
 Conc: 554.02 ng/ml