

Data Path : Z:\pestpcbsrv\HPCHEM1\ECD_O\Data\P0061825\
 Data File : P0111696.D
 Signal(s) : Signal #1: ECD1A.ch Signal #2: ECD2B.ch
 Acq On : 18 Jun 2025 18:20
 Operator : YP/AJ
 Sample : Q2321-02 10X
 Misc :
 ALS Vial : 17 Sample Multiplier: 1

Instrument :
 ECD_O
ClientSampleId :
 34880

Manual Integrations
APPROVED

Reviewed By :Yogesh Patel 06/19/2025
 Supervised By :mohammad ahmed 06/20/2025

Integration File signal 1: autoint1.e
 Integration File signal 2: autoint2.e
 Quant Time: Jun 19 04:20:36 2025
 Quant Method : Z:\pestpcbsrv\HPCHEM1\ECD_O\methods\P0061125.M
 Quant Title : GC EXTRACTABLES
 QLast Update : Thu Jun 12 06:25:26 2025
 Response via : Initial Calibration
 Integrator: ChemStation

Volume Inj. : 2 µl
 Signal #1 Phase : ZB-MR1 Signal #2 Phase: ZB-MR2
 Signal #1 Info : 30Mx0.32mmx 0.50µ Signal #2 Info : 30M x 0.32mm x 0.25µm

Compound	RT#1	RT#2	Resp#1	Resp#2	ng/ml	ng/ml

System Monitoring Compounds						
1) SA Tetrachlo...	3.679	3.676	3039381	2048466	0.528m	0.365 #
2) SA Decachlor...	8.712	8.663	2083518	1067393	0.397m	0.600m#

Target Compounds

(f)=RT Delta > 1/2 Window (#)=Amounts differ by > 25% (m)=manual int.

Data Path : Z:\pestpcbsrv\HPCHEM1\ECD_O\Data\PO061825\
 Data File : PO111696.D
 Signal(s) : Signal #1: ECD1A.ch Signal #2: ECD2B.ch
 Acq On : 18 Jun 2025 18:20
 Operator : YP/AJ
 Sample : Q2321-02 10X
 Misc :
 ALS Vial : 17 Sample Multiplier: 1

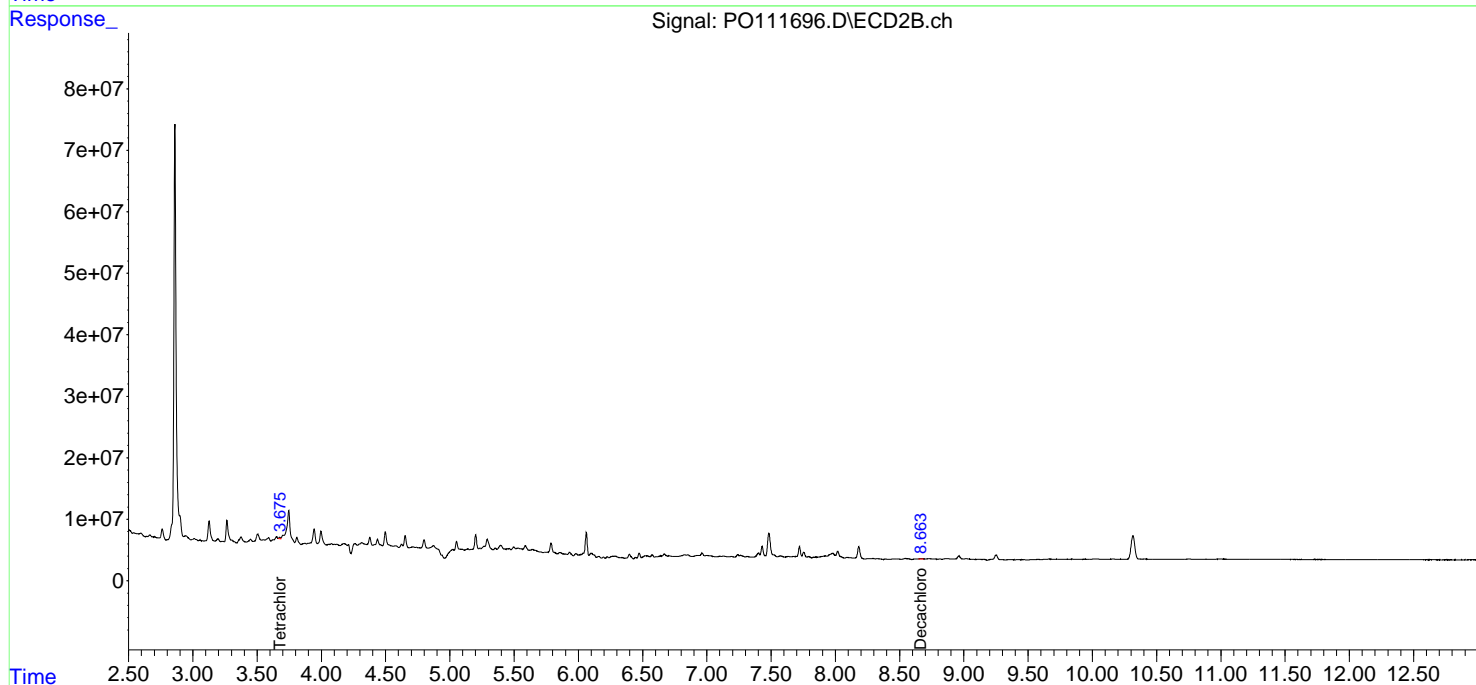
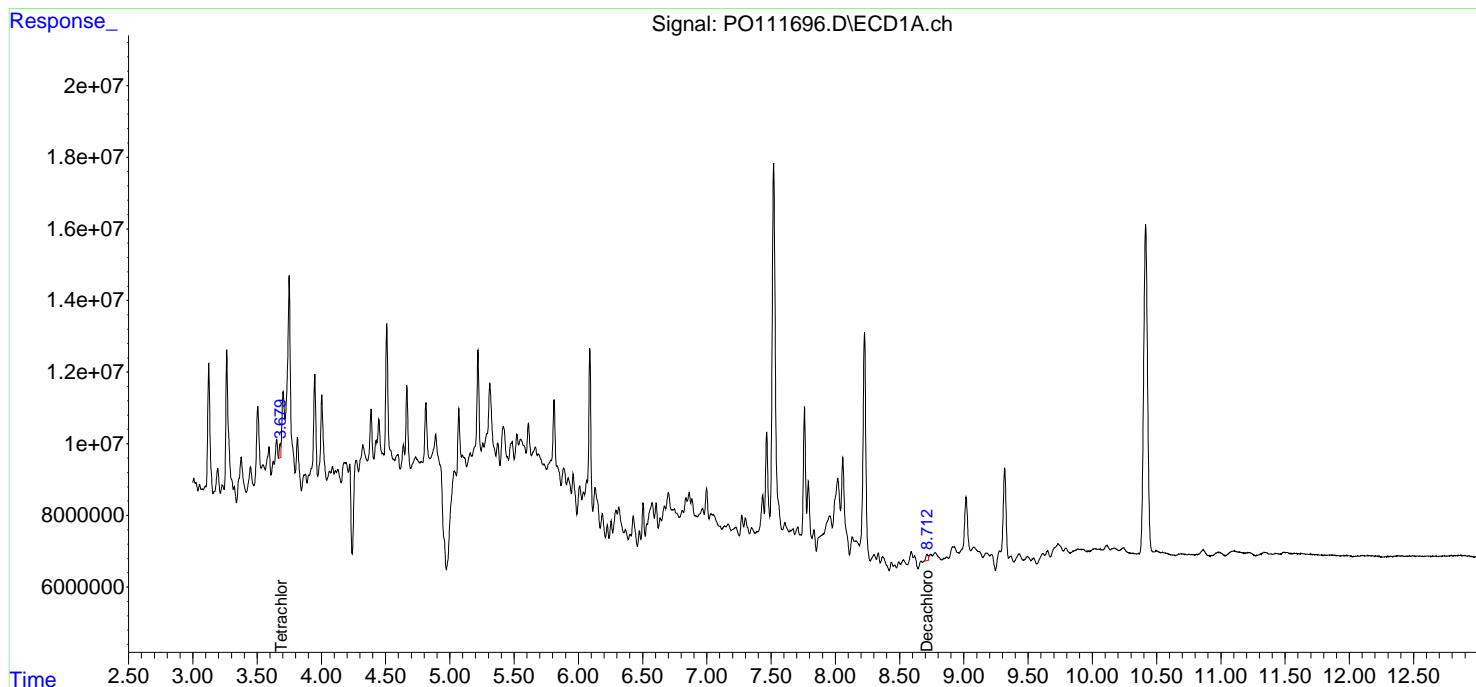
Instrument :
 ECD_O
 ClientSampleId :
 34880

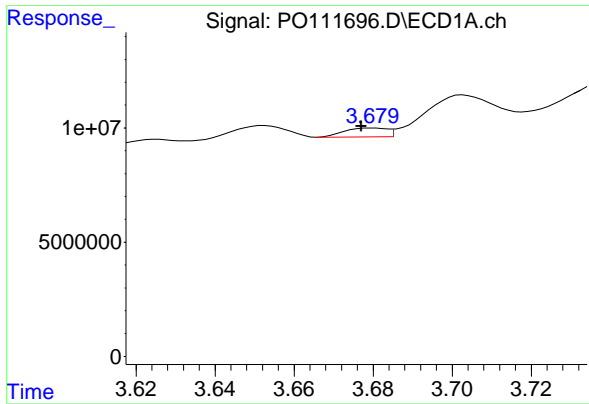
Manual Integrations
APPROVED

Reviewed By :Yogesh Patel 06/19/2025
 Supervised By :mohammad ahmed 06/20/2025

Integration File signal 1: autoint1.e
 Integration File signal 2: autoint2.e
 Quant Time: Jun 19 04:20:36 2025
 Quant Method : Z:\pestpcbsrv\HPCHEM1\ECD_O\methods\PO061125.M
 Quant Title : GC EXTRACTABLES
 QLast Update : Thu Jun 12 06:25:26 2025
 Response via : Initial Calibration
 Integrator: ChemStation

Volume Inj. : 2 µl
 Signal #1 Phase : ZB-MR1 Signal #2 Phase: ZB-MR2
 Signal #1 Info : 30Mx0.32mmx 0.50µm Signal #2 Info : 30M x 0.32mm x 0.25µm





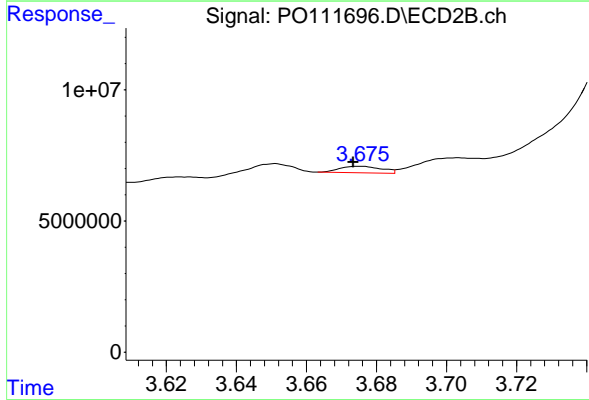
#1 Tetrachloro-m-xylene

R.T.: 3.679 min
 Delta R.T.: 0.002 min
 Response: 3039381
 Conc: 0.53 ng/ml

Instrument :
 ECD_O
 ClientSampleId :
 34880

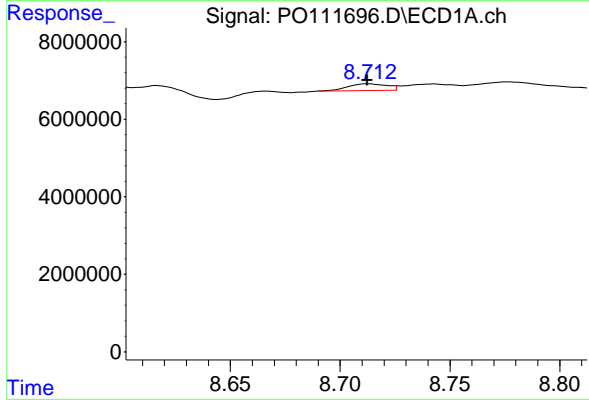
Manual Integrations
 APPROVED

Reviewed By :Yogesh Patel 06/19/2025
 Supervised By :mohammad ahmed 06/20/2025



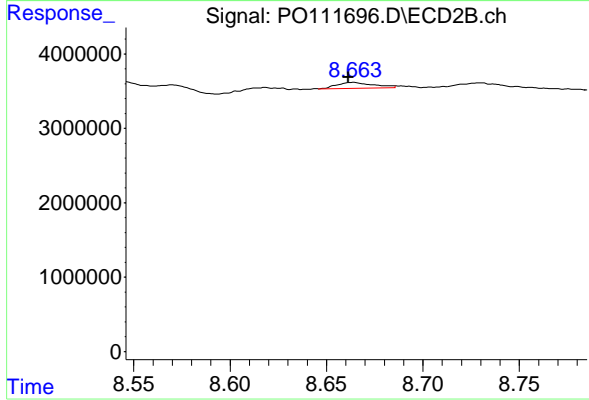
#1 Tetrachloro-m-xylene

R.T.: 3.676 min
 Delta R.T.: 0.002 min
 Response: 2048466
 Conc: 0.36 ng/ml



#2 Decachlorobiphenyl

R.T.: 8.712 min
 Delta R.T.: 0.000 min
 Response: 2083518
 Conc: 0.40 ng/ml m



#2 Decachlorobiphenyl

R.T.: 8.663 min
 Delta R.T.: 0.002 min
 Response: 1067393
 Conc: 0.60 ng/ml m