

Data Path : Z:\pestpcbsrv\HPCHEM1\ECD_0\Data\P0061825\
 Data File : P0111702.D
 Signal(s) : Signal #1: ECD1A.ch Signal #2: ECD2B.ch
 Acq On : 18 Jun 2025 21:00
 Operator : YP/AJ
 Sample : AR1660CCC500
 Misc :
 ALS Vial : 3 Sample Multiplier: 1

Instrument :
 ECD_0
 ClientSampleId :
 AR1660CCC500

Integration File signal 1: autoint1.e
 Integration File signal 2: autoint2.e
 Quant Time: Jun 19 01:34:18 2025
 Quant Method : Z:\pestpcbsrv\HPCHEM1\ECD_0\methods\P0061125.M
 Quant Title : GC EXTRACTABLES
 QLast Update : Thu Jun 12 06:25:26 2025
 Response via : Initial Calibration
 Integrator: ChemStation

Volume Inj. : 2 µl
 Signal #1 Phase : ZB-MR1 Signal #2 Phase: ZB-MR2
 Signal #1 Info : 30Mx0.32mmx 0.50µ Signal #2 Info : 30M x 0.32mm x 0.25µm

Compound	RT#1	RT#2	Resp#1	Resp#2	ng/ml	ng/ml

System Monitoring Compounds						
1) SA Tetrachlo...	3.677	3.674	315.5E6	292.6E6	54.776	52.094
2) SA Decachlor...	8.710	8.661	212.2E6	81336627	40.426	45.755
Target Compounds						
3) L1 AR-1016-1	4.765	4.751	120.5E6	100.1E6	504.922	508.736
4) L1 AR-1016-2	4.784	4.769	171.8E6	145.9E6	516.288	512.171
5) L1 AR-1016-3	4.840	4.944	123.3E6	76200697	535.698	507.195
6) L1 AR-1016-4	4.960	4.987	93199347	61085645	502.523	501.577
7) L1 AR-1016-5	5.217	5.199	93933147	79758505	503.276	501.000
31) L7 AR-1260-1	6.255	6.229	181.0E6	115.4E6	509.535	459.828
32) L7 AR-1260-2	6.445	6.416	238.3E6	136.3E6	504.434	463.423
33) L7 AR-1260-3	6.811	6.569	193.8E6	119.2E6	456.435	446.192
34) L7 AR-1260-4	7.071	7.038	142.9E6	85152352	454.402	447.943
35) L7 AR-1260-5	7.314	7.280	357.8E6	189.7E6	434.348	446.426

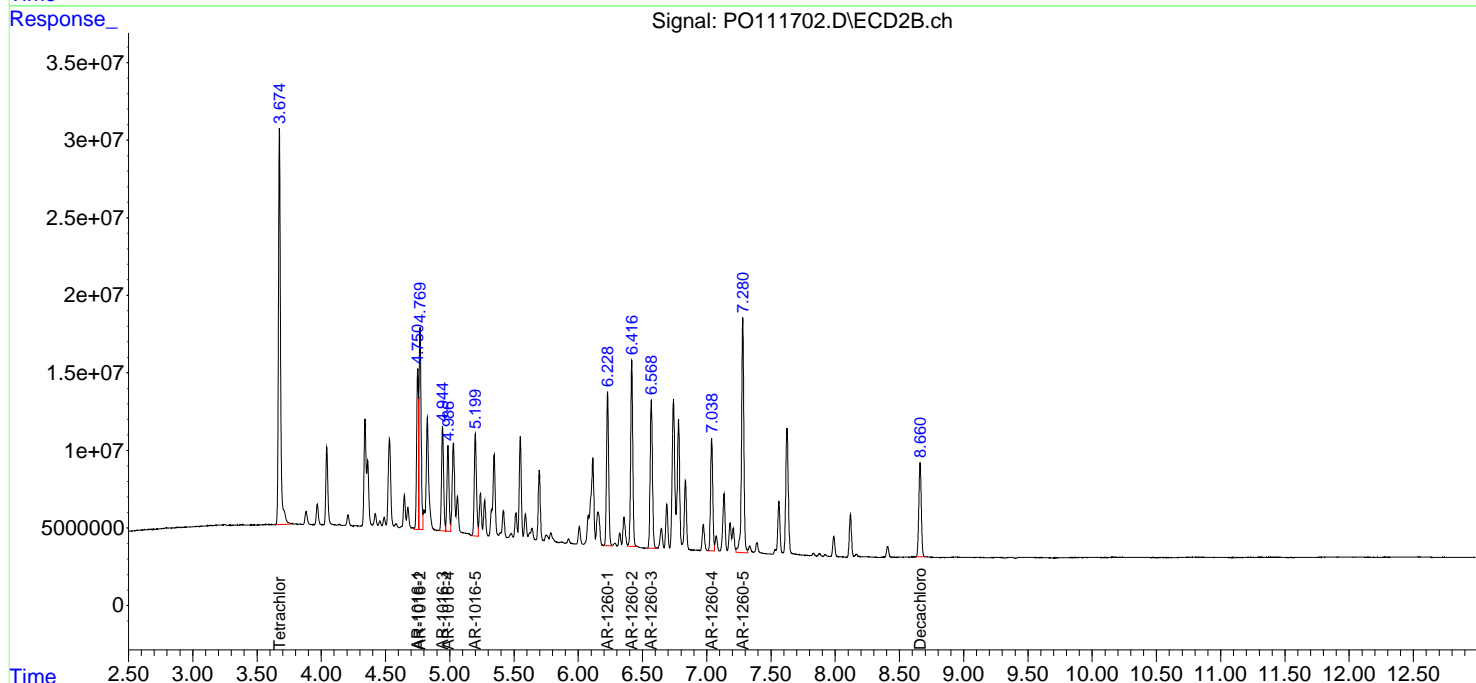
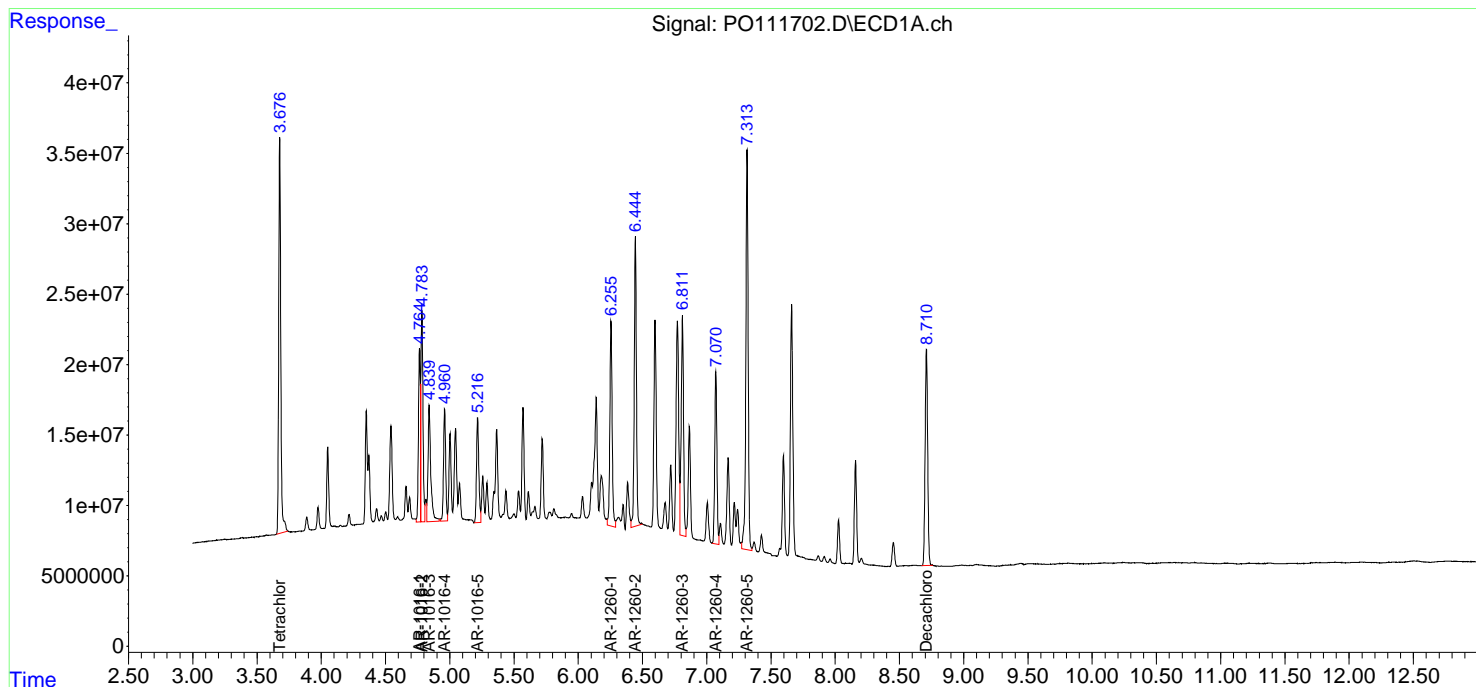
(f)=RT Delta > 1/2 Window (#)=Amounts differ by > 25% (m)=manual int.

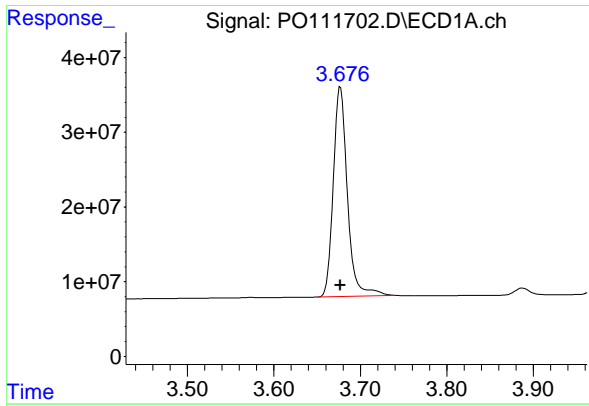
Data Path : Z:\pestpcbsrv\HPCHEM1\ECD_O\Data\PO061825\
 Data File : PO111702.D
 Signal(s) : Signal #1: ECD1A.ch Signal #2: ECD2B.ch
 Acq On : 18 Jun 2025 21:00
 Operator : YP/AJ
 Sample : AR1660CCC500
 Misc :
 ALS Vial : 3 Sample Multiplier: 1

Instrument :
 ECD_O
 ClientSampleId :
 AR1660CCC500

Integration File signal 1: autoint1.e
 Integration File signal 2: autoint2.e
 Quant Time: Jun 19 01:34:18 2025
 Quant Method : Z:\pestpcbsrv\HPCHEM1\ECD_O\methods\PO061125.M
 Quant Title : GC EXTRACTABLES
 QLast Update : Thu Jun 12 06:25:26 2025
 Response via : Initial Calibration
 Integrator: ChemStation

Volume Inj. : 2 µl
 Signal #1 Phase : ZB-MR1 Signal #2 Phase: ZB-MR2
 Signal #1 Info : 30Mx0.32mmx 0.50µ Signal #2 Info : 30M x 0.32mm x 0.25µm

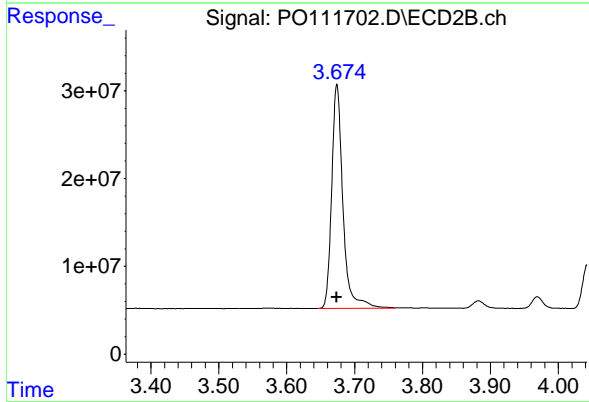




#1 Tetrachloro-m-xylene

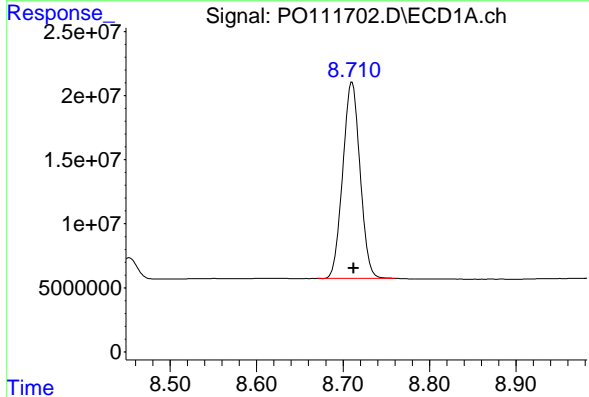
R.T.: 3.677 min
 Delta R.T.: 0.000 min
 Response: 315480384
 Conc: 54.78 ng/ml

Instrument :
 ECD_O
 ClientSampleId :
 AR1660CCC500



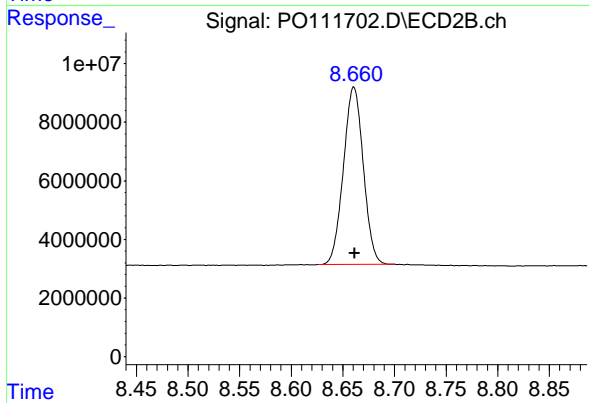
#1 Tetrachloro-m-xylene

R.T.: 3.674 min
 Delta R.T.: 0.000 min
 Response: 292625308
 Conc: 52.09 ng/ml



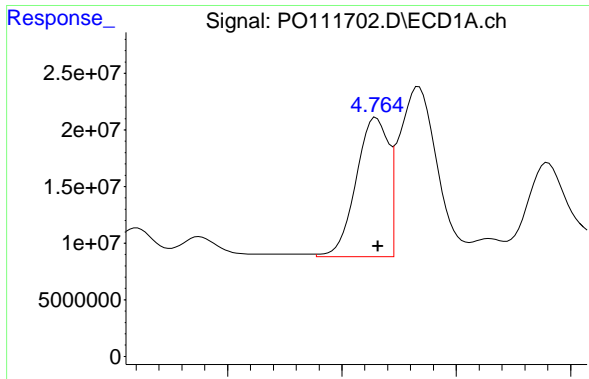
#2 Decachlorobiphenyl

R.T.: 8.710 min
 Delta R.T.: -0.002 min
 Response: 212203982
 Conc: 40.43 ng/ml



#2 Decachlorobiphenyl

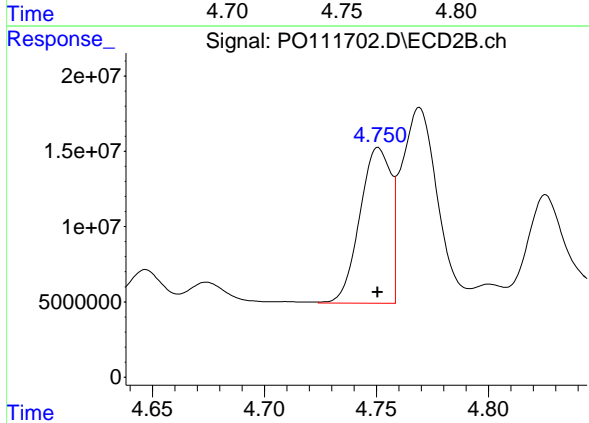
R.T.: 8.661 min
 Delta R.T.: 0.000 min
 Response: 81336627
 Conc: 45.75 ng/ml



#3 AR-1016-1

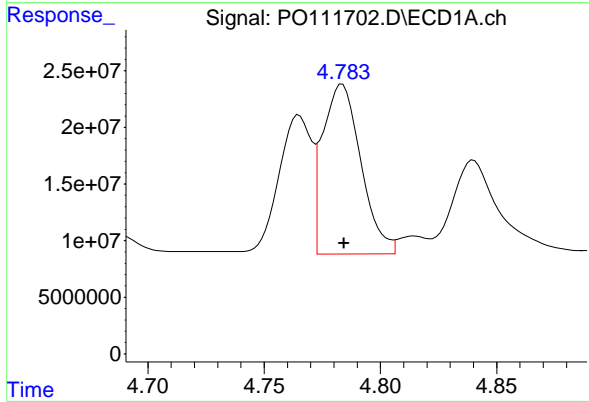
R.T.: 4.765 min
 Delta R.T.: 0.000 min
 Response: 120450881
 Conc: 504.92 ng/ml

Instrument :
 ECD_O
 ClientSampleId :
 AR1660CCC500



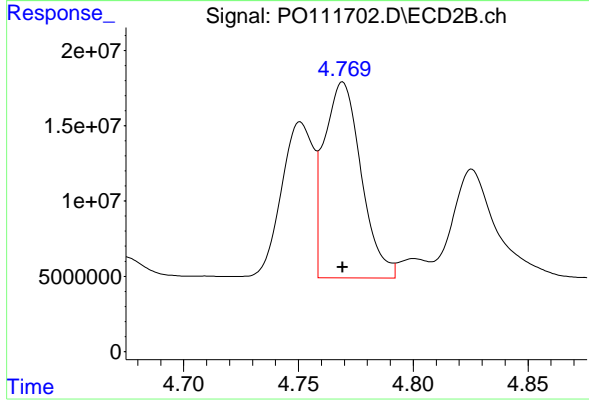
#3 AR-1016-1

R.T.: 4.751 min
 Delta R.T.: 0.000 min
 Response: 100102505
 Conc: 508.74 ng/ml



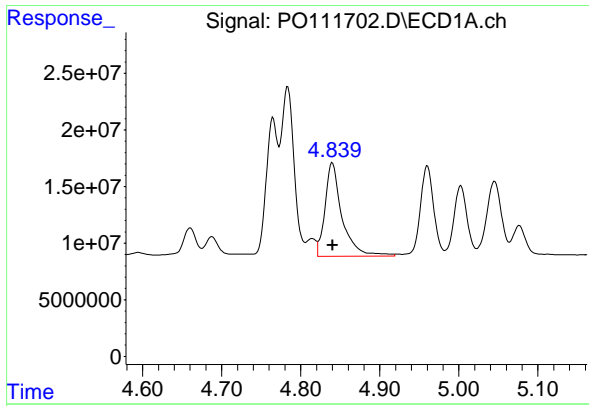
#4 AR-1016-2

R.T.: 4.784 min
 Delta R.T.: 0.000 min
 Response: 171791385
 Conc: 516.29 ng/ml



#4 AR-1016-2

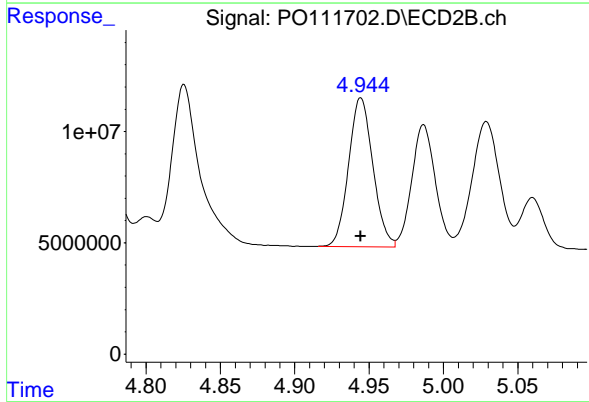
R.T.: 4.769 min
 Delta R.T.: 0.000 min
 Response: 145907517
 Conc: 512.17 ng/ml



#5 AR-1016-3

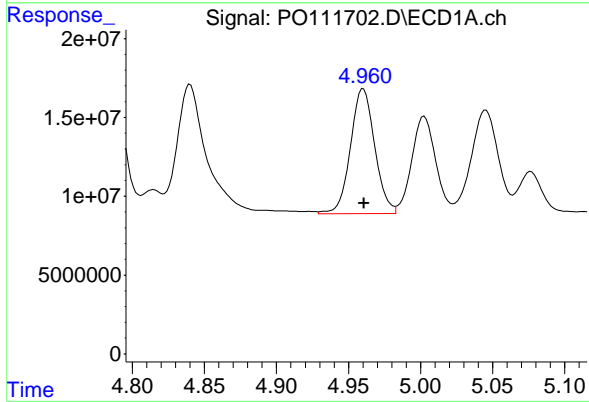
R.T.: 4.840 min
 Delta R.T.: 0.000 min
 Response: 123285968
 Conc: 535.70 ng/ml

Instrument :
 ECD_O
 ClientSampleId :
 AR1660CCC500



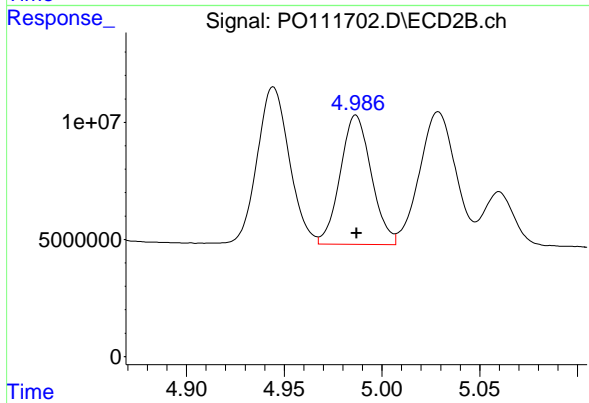
#5 AR-1016-3

R.T.: 4.944 min
 Delta R.T.: 0.000 min
 Response: 76200697
 Conc: 507.20 ng/ml



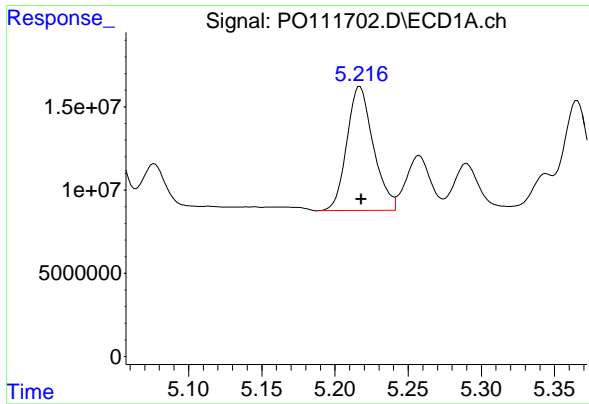
#6 AR-1016-4

R.T.: 4.960 min
 Delta R.T.: 0.000 min
 Response: 93199347
 Conc: 502.52 ng/ml



#6 AR-1016-4

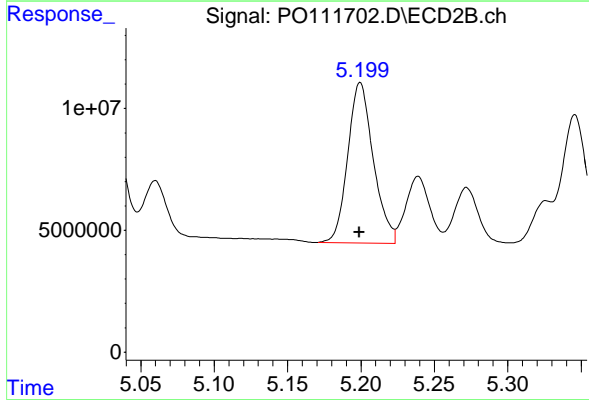
R.T.: 4.987 min
 Delta R.T.: 0.000 min
 Response: 61085645
 Conc: 501.58 ng/ml



#7 AR-1016-5

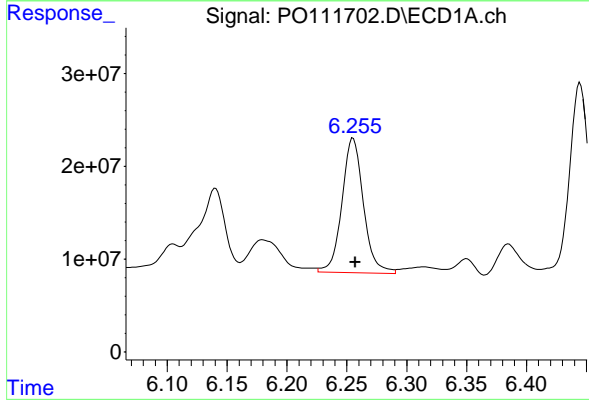
R.T.: 5.217 min
 Delta R.T.: 0.000 min
 Response: 93933147
 Conc: 503.28 ng/ml

Instrument :
 ECD_O
 ClientSampleId :
 AR1660CCC500



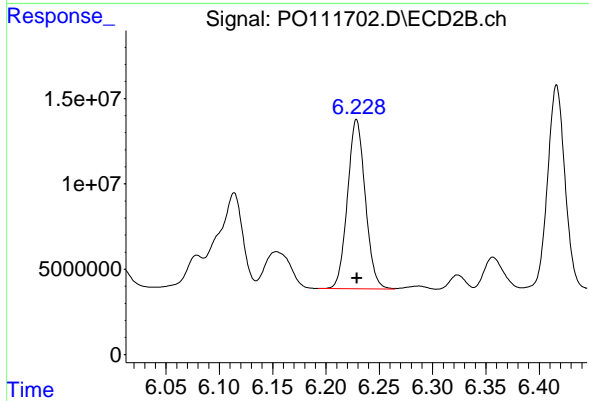
#7 AR-1016-5

R.T.: 5.199 min
 Delta R.T.: 0.000 min
 Response: 79758505
 Conc: 501.00 ng/ml



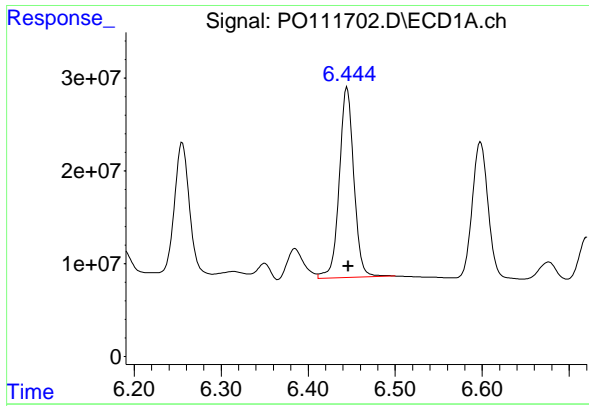
#31 AR-1260-1

R.T.: 6.255 min
 Delta R.T.: -0.002 min
 Response: 181048787
 Conc: 509.53 ng/ml



#31 AR-1260-1

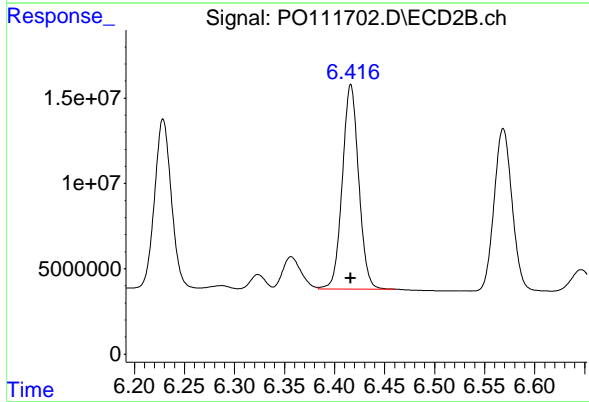
R.T.: 6.229 min
 Delta R.T.: 0.000 min
 Response: 115378176
 Conc: 459.83 ng/ml



#32 AR-1260-2

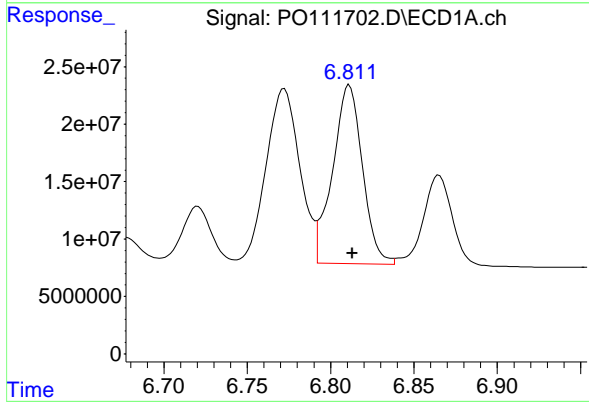
R.T.: 6.445 min
 Delta R.T.: -0.002 min
 Response: 238331331
 Conc: 504.43 ng/ml

Instrument :
 ECD_O
 ClientSampleId :
 AR1660CCC500



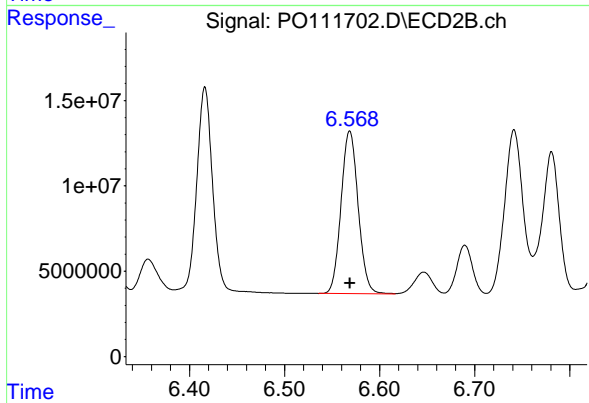
#32 AR-1260-2

R.T.: 6.416 min
 Delta R.T.: 0.000 min
 Response: 136254196
 Conc: 463.42 ng/ml



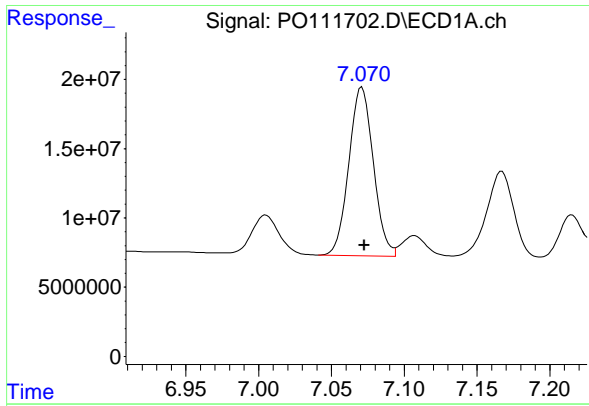
#33 AR-1260-3

R.T.: 6.811 min
 Delta R.T.: -0.002 min
 Response: 193836226
 Conc: 456.44 ng/ml



#33 AR-1260-3

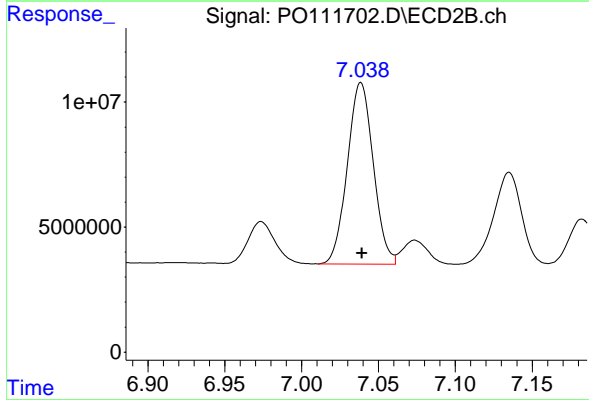
R.T.: 6.569 min
 Delta R.T.: 0.000 min
 Response: 119213291
 Conc: 446.19 ng/ml



#34 AR-1260-4

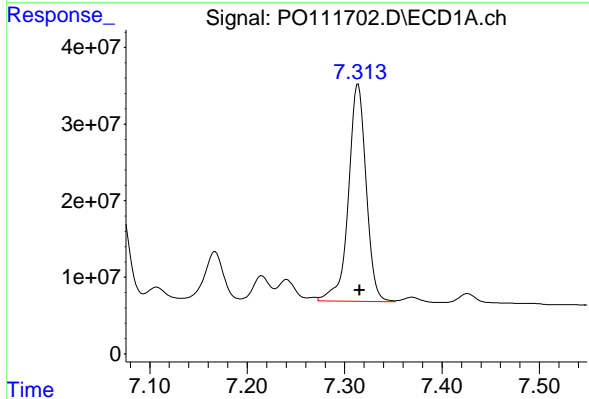
R.T.: 7.071 min
 Delta R.T.: -0.002 min
 Response: 142885551
 Conc: 454.40 ng/ml

Instrument :
 ECD_O
 ClientSampleId :
 AR1660CCC500



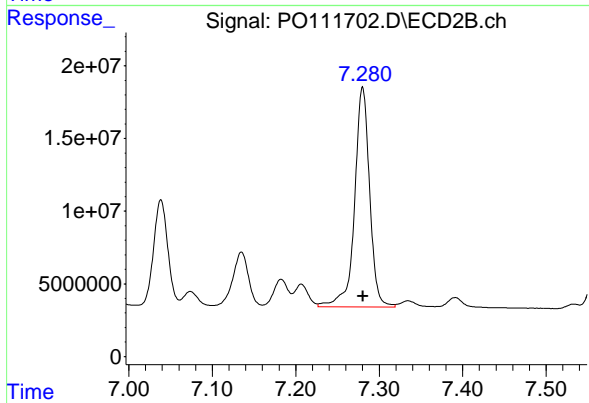
#34 AR-1260-4

R.T.: 7.038 min
 Delta R.T.: 0.000 min
 Response: 85152352
 Conc: 447.94 ng/ml



#35 AR-1260-5

R.T.: 7.314 min
 Delta R.T.: -0.002 min
 Response: 357784815
 Conc: 434.35 ng/ml



#35 AR-1260-5

R.T.: 7.280 min
 Delta R.T.: 0.000 min
 Response: 189740087
 Conc: 446.43 ng/ml