

Data Path : Z:\pestpcbsrv\HPCHEM1\ECD_0\Data\P0061923\
 Data File : P0095795.D
 Signal(s) : Signal #1: ECD1A.ch Signal #2: ECD2B.ch
 Acq On : 19 Jun 2023 15:37
 Operator : YP/AJ
 Sample : AR1242CCC500
 Misc :
 ALS Vial : 4 Sample Multiplier: 1

Instrument :
 ECD_0
ClientSampleId :
 AR1242CCC500

Integration File signal 1: autoint1.e
 Integration File signal 2: autoint2.e
 Quant Time: Jun 19 23:46:21 2023
 Quant Method : Z:\pestpcbsrv\HPCHEM1\ECD_0\methods\P0061623.M
 Quant Title : GC EXTRACTABLES
 QLast Update : Mon Jun 19 09:21:49 2023
 Response via : Initial Calibration
 Integrator: ChemStation

Volume Inj. : 2 µl
 Signal #1 Phase : ZB-MR1 Signal #2 Phase: ZB-MR2
 Signal #1 Info : 30Mx0.32mmx 0.50µ Signal #2 Info : 30M x 0.32mm x 0.25µm

Compound	RT#1	RT#2	Resp#1	Resp#2	ng/ml	ng/ml

System Monitoring Compounds						
1) SA Tetrachlo...	4.430	3.639	113.0E6	60249517	50.736	46.615
2) SA Decachlor...	10.301	8.678	27991432	45639480	43.445	45.223
Target Compounds						
16) L4 AR-1242-1	5.614	4.729	22622595	15561495	553.655	471.664
17) L4 AR-1242-2	5.636	4.747	33296594	21031892	551.426	462.821
18) L4 AR-1242-3	5.699	4.924	21441811	11540115	557.249	472.321
19) L4 AR-1242-4	5.799	5.009	16302086	12419534	533.788	467.184
20) L4 AR-1242-5	6.546	5.534	11623620	14523503	690.929	454.902 #

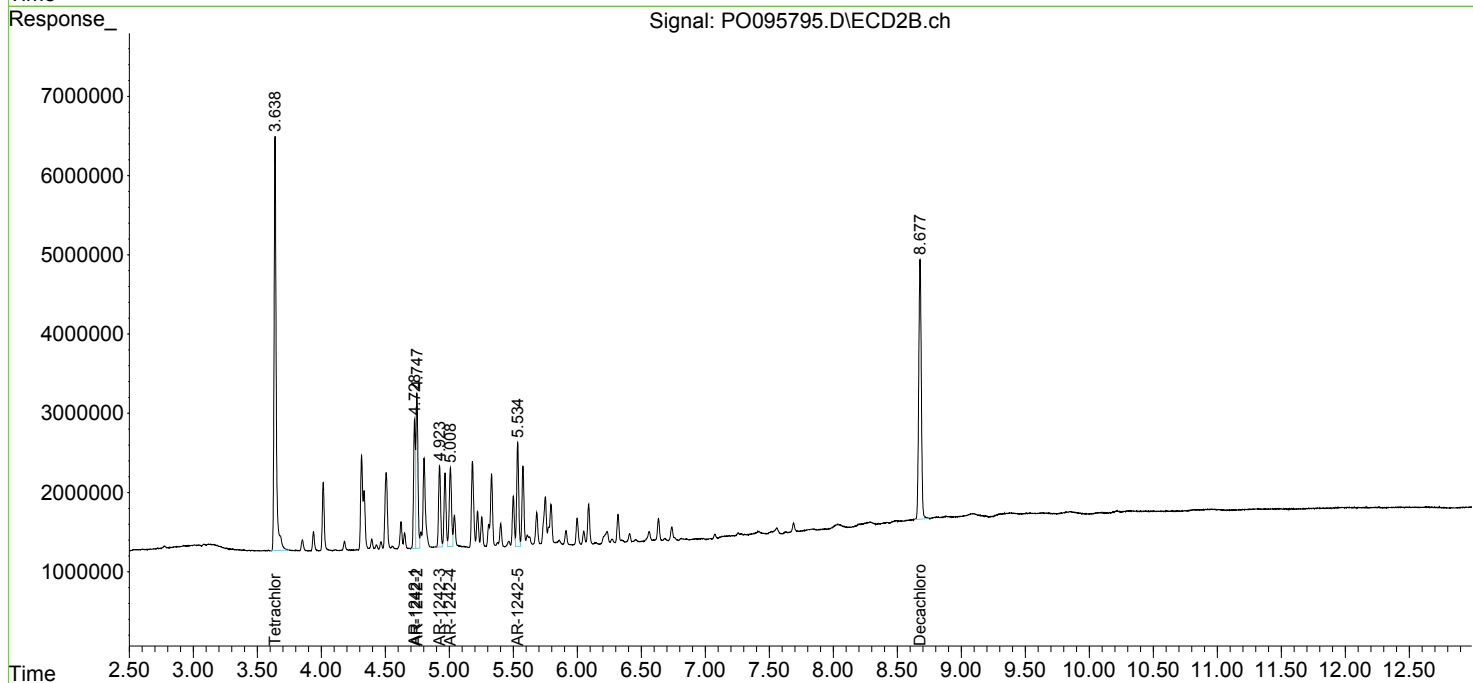
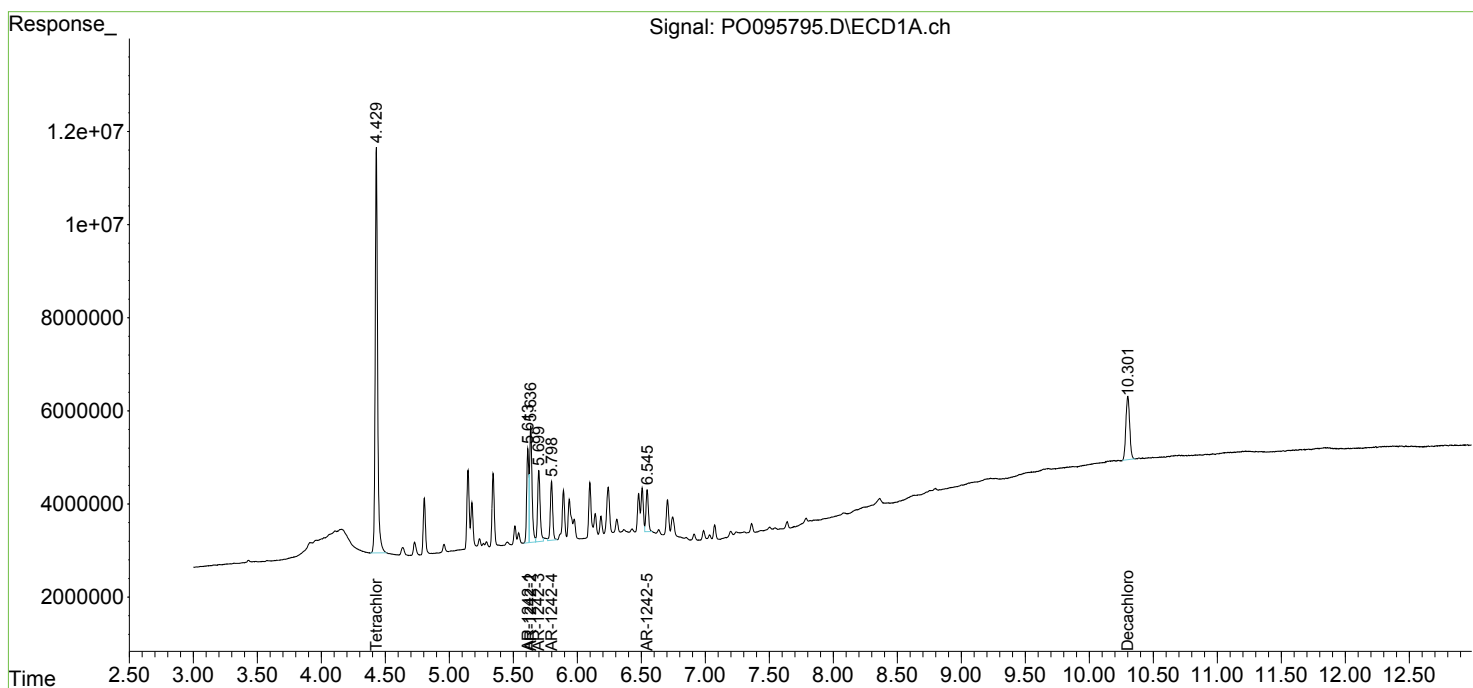
(f)=RT Delta > 1/2 Window (#)=Amounts differ by > 25% (m)=manual int.

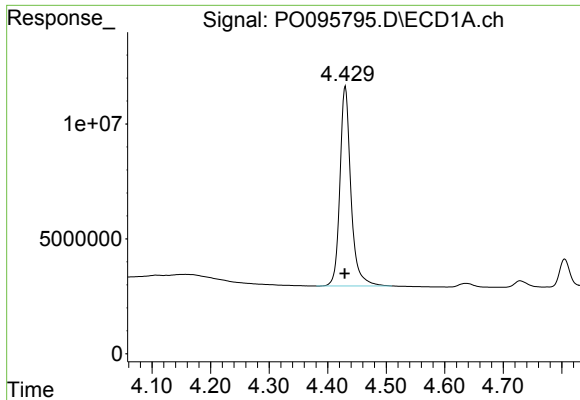
Data Path : Z:\pestpcbsrv\HPCHEM1\ECD_O\Data\P0061923\
 Data File : P0095795.D
 Signal(s) : Signal #1: ECD1A.ch Signal #2: ECD2B.ch
 Acq On : 19 Jun 2023 15:37
 Operator : YP/AJ
 Sample : AR1242CCC500
 Misc :
 ALS Vial : 4 Sample Multiplier: 1

Instrument :
 ECD_O
 ClientSampleId :
 AR1242CCC500

Integration File signal 1: autoint1.e
 Integration File signal 2: autoint2.e
 Quant Time: Jun 19 23:46:21 2023
 Quant Method : Z:\pestpcbsrv\HPCHEM1\ECD_O\methods\P0061623.M
 Quant Title : GC EXTRACTABLES
 QLast Update : Mon Jun 19 09:21:49 2023
 Response via : Initial Calibration
 Integrator: ChemStation

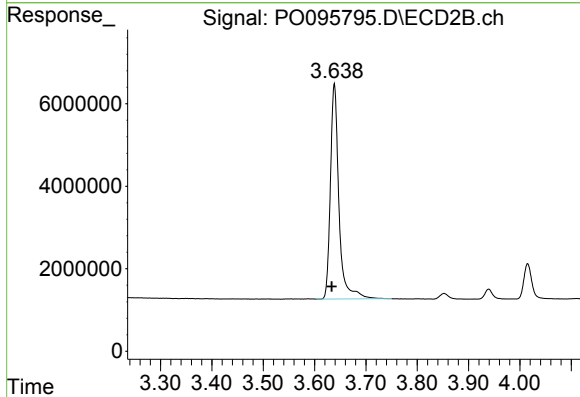
Volume Inj. : 2 µl
 Signal #1 Phase : ZB-MR1 Signal #2 Phase: ZB-MR2
 Signal #1 Info : 30Mx0.32mmx 0.50µ Signal #2 Info : 30M x 0.32mm x 0.25µm



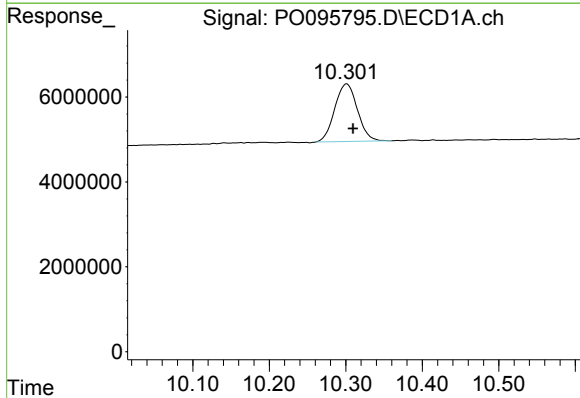


#1 Tetrachloro-m-xylene
 R.T.: 4.430 min
 Delta R.T.: 0.001 min
 Response: 113011661
 Conc: 50.74 ng/ml

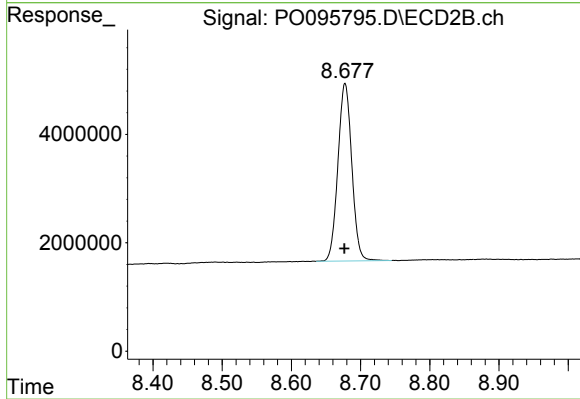
Instrument :
 ECD_O
 ClientSampleId :
 AR1242CCC500



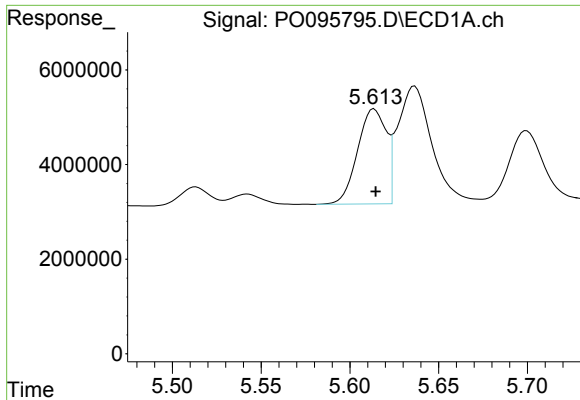
#1 Tetrachloro-m-xylene
 R.T.: 3.639 min
 Delta R.T.: 0.005 min
 Response: 60249517
 Conc: 46.61 ng/ml



#2 Decachlorobiphenyl
 R.T.: 10.301 min
 Delta R.T.: -0.009 min
 Response: 27991432
 Conc: 43.45 ng/ml



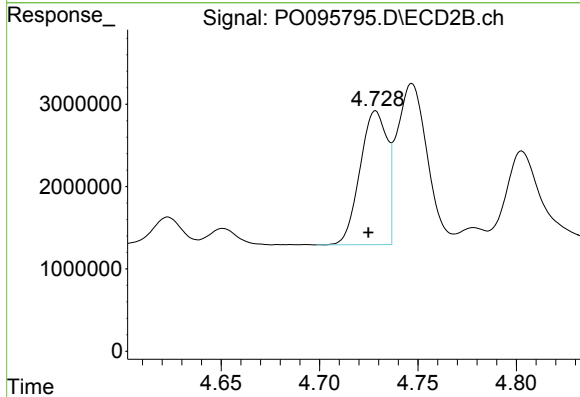
#2 Decachlorobiphenyl
 R.T.: 8.678 min
 Delta R.T.: 0.001 min
 Response: 45639480
 Conc: 45.22 ng/ml



#16 AR-1242-1

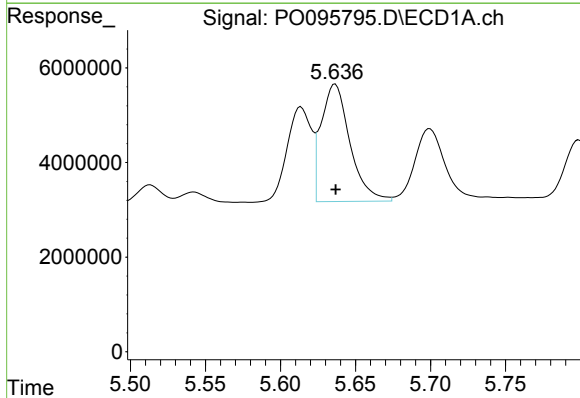
R.T.: 5.614 min
 Delta R.T.: 0.000 min
 Response: 22622595
 Conc: 553.66 ng/ml

Instrument :
 ECD_O
 ClientSampleId :
 AR1242CCC500



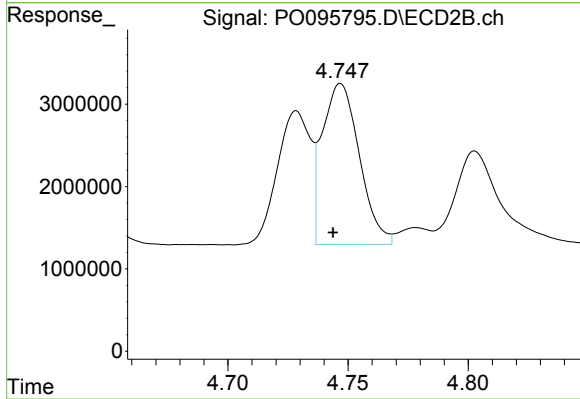
#16 AR-1242-1

R.T.: 4.729 min
 Delta R.T.: 0.004 min
 Response: 15561495
 Conc: 471.66 ng/ml



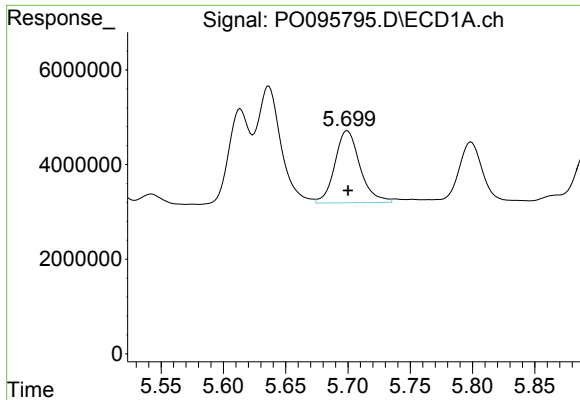
#17 AR-1242-2

R.T.: 5.636 min
 Delta R.T.: 0.000 min
 Response: 33296594
 Conc: 551.43 ng/ml



#17 AR-1242-2

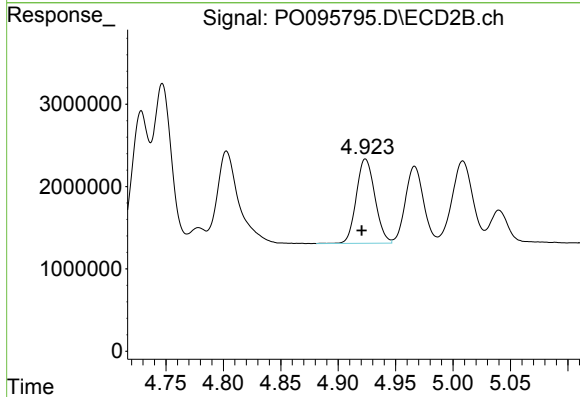
R.T.: 4.747 min
 Delta R.T.: 0.003 min
 Response: 21031892
 Conc: 462.82 ng/ml



#18 AR-1242-3

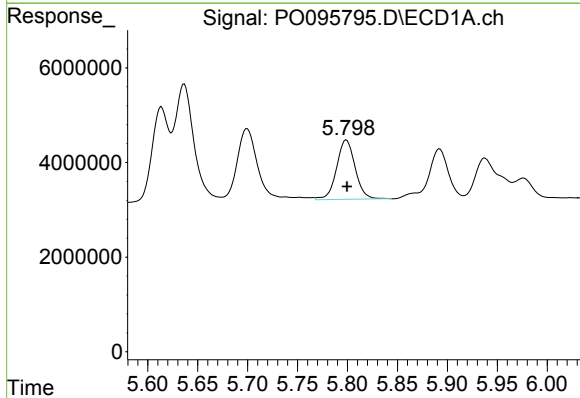
R.T.: 5.699 min
 Delta R.T.: 0.000 min
 Response: 21441811
 Conc: 557.25 ng/ml

Instrument :
 ECD_O
 ClientSampleId :
 AR1242CCC500



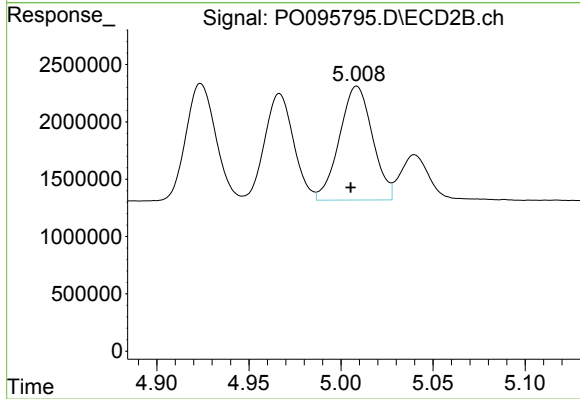
#18 AR-1242-3

R.T.: 4.924 min
 Delta R.T.: 0.003 min
 Response: 11540115
 Conc: 472.32 ng/ml



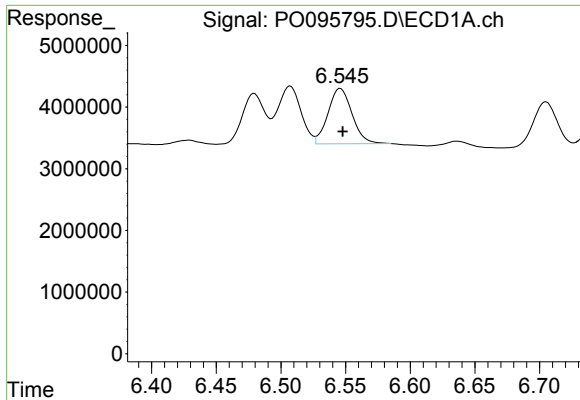
#19 AR-1242-4

R.T.: 5.799 min
 Delta R.T.: 0.000 min
 Response: 16302086
 Conc: 533.79 ng/ml



#19 AR-1242-4

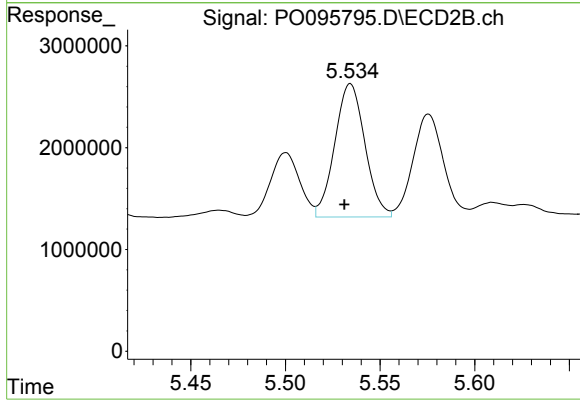
R.T.: 5.009 min
 Delta R.T.: 0.003 min
 Response: 12419534
 Conc: 467.18 ng/ml



#20 AR-1242-5

R.T.: 6.546 min
Delta R.T.: -0.002 min
Response: 11623620
Conc: 690.93 ng/ml

Instrument :
ECD_O
ClientSampleId :
AR1242CCC500



#20 AR-1242-5

R.T.: 5.534 min
Delta R.T.: 0.003 min
Response: 14523503
Conc: 454.90 ng/ml