

Data Path : Z:\pestpcbsrv\HPCHEM1\ECD\_O\Data\P0061925\  
 Data File : P0111737.D  
 Signal(s) : Signal #1: ECD1A.ch Signal #2: ECD2B.ch  
 Acq On : 19 Jun 2025 19:49  
 Operator : YP/AJ  
 Sample : AR1660CCC500  
 Misc :  
 ALS Vial : 3 Sample Multiplier: 1

Instrument :  
 ECD\_O  
 ClientSampleId :  
 AR1660CCC500

Integration File signal 1: autoint1.e  
 Integration File signal 2: autoint2.e  
 Quant Time: Jun 19 23:01:24 2025  
 Quant Method : Z:\pestpcbsrv\HPCHEM1\ECD\_O\methods\P0061125.M  
 Quant Title : GC EXTRACTABLES  
 QLast Update : Thu Jun 12 06:25:26 2025  
 Response via : Initial Calibration  
 Integrator: ChemStation

Volume Inj. : 2 µl  
 Signal #1 Phase : ZB-MR2 Signal #2 Phase: ZB-MR2  
 Signal #1 Info : 30Mx0.32mmx 0.50µ Signal #2 Info : 30M x 0.32mm x 0.25µm

Compound	RT#1	RT#2	Resp#1	Resp#2	ng/ml	ng/ml
-----						
System Monitoring Compounds						
1) SA Tetrachlo...	3.676	3.673	325.2E6	302.5E6	56.466	53.850
2) SA Decachlor...	8.713	8.661	230.8E6	86655929	43.972	48.747
Target Compounds						
3) L1 AR-1016-1	4.764	4.750	124.9E6	105.6E6	523.736	536.830
4) L1 AR-1016-2	4.783	4.769	178.2E6	152.1E6	535.404	533.929
5) L1 AR-1016-3	4.840	4.944	122.6E6	80121589	532.557	533.293
6) L1 AR-1016-4	4.960	4.987	99319934	62536729	535.525	513.491
7) L1 AR-1016-5	5.217	5.198	116.4E6	91632591	623.474	575.587
8) L2 AR-1221-1	3.887	3.882	11927750	10749005	136.977	143.946
9) L2 AR-1221-2	3.975	3.969	18071329	15406345	281.626	275.365
10) L2 AR-1221-3	4.050	4.043	64328002	57126626	329.826	332.459
11) L3 AR-1232-1	4.050	4.043	64328002	57126626	423.910	429.557
12) L3 AR-1232-2	4.543	4.769	93233454	152.1E6	1081.329	1154.145
13) L3 AR-1232-3	4.783	4.944	178.2E6	80121589	1093.759	1159.198
14) L3 AR-1232-4	4.960	5.028	99319934	76746066	1141.357	1268.865
15) L3 AR-1232-5	5.002	5.198	74078241	91632591	1309.253	1379.704
16) L4 AR-1242-1	4.764	4.750	124.9E6	105.6E6	620.218	648.996
17) L4 AR-1242-2	4.783	4.769	178.2E6	152.1E6	632.269	644.350
18) L4 AR-1242-3	4.840	4.944	122.6E6	80121589	616.442	637.965
19) L4 AR-1242-4	4.960	5.028	99319934	76746066	627.824	626.198
20) L4 AR-1242-5	5.612	5.549	34089727	84980220	203.866	566.953 #
21) L5 AR-1248-1	4.764	4.750	124.9E6	105.6E6	774.742	792.519
22) L5 AR-1248-2	5.002	4.987	74078241	62536729	343.583	351.023
23) L5 AR-1248-3	5.217	5.028	116.4E6	76746066	431.407	405.125
24) L5 AR-1248-4	5.571	5.198	112.1E6	91632591	280.406	401.328 #
25) L5 AR-1248-5	5.612	5.589	34089727	24763444	121.398	113.716
26) L6 AR-1254-1	5.571	5.549	112.1E6	84980220	263.738	263.090
27) L6 AR-1254-2	5.720	5.697	85079753	60312503	224.172	215.931
28) L6 AR-1254-3	6.141	6.113	148.6E6	102.1E6	260.097	243.760
29) L6 AR-1254-4	6.354	6.326	21497388	13517999	61.618	59.341
30) L6 AR-1254-5	6.772	6.742	245.0E6	154.2E6	478.397	473.567
31) L7 AR-1260-1	6.257	6.228	185.3E6	130.8E6	521.618	521.258
32) L7 AR-1260-2	6.446	6.416	267.2E6	159.4E6	565.489	542.071
33) L7 AR-1260-3	6.812	6.568	230.6E6	137.8E6	542.894	515.806
34) L7 AR-1260-4	7.072	7.039	155.7E6	96049539	495.152	505.268
35) L7 AR-1260-5	7.315	7.281	396.5E6	211.1E6	481.334	496.633
36) L8 AR-1262-1	6.812	6.780	230.6E6	126.3E6	378.032	374.070
37) L8 AR-1262-2	7.315	7.281	396.5E6	211.1E6	421.168	453.179
38) L8 AR-1262-3	7.599	7.562	101.6E6	45624079	256.050	274.373
39) L8 AR-1262-4	7.662	7.625	277.9E6	120.7E6	422.949	435.481
40) L8 AR-1262-5	8.160	8.120	107.9E6	35660702	354.296	350.924
41) L9 AR-1268-1	7.599	7.562	101.6E6	45624079	90.145	95.367

Data Path : Z:\pestpcbsrv\HPCHEM1\ECD\_O\Data\P0061925\  
 Data File : P0111737.D  
 Signal(s) : Signal #1: ECD1A.ch Signal #2: ECD2B.ch  
 Acq On : 19 Jun 2025 19:49  
 Operator : YP/AJ  
 Sample : AR1660CCC500  
 Misc :  
 ALS Vial : 3 Sample Multiplier: 1

Instrument :  
 ECD\_O  
 ClientSampleId :  
 AR1660CCC500

Integration File signal 1: autoint1.e  
 Integration File signal 2: autoint2.e  
 Quant Time: Jun 19 23:01:24 2025  
 Quant Method : Z:\pestpcbsrv\HPCHEM1\ECD\_O\methods\P0061125.M  
 Quant Title : GC EXTRACTABLES  
 QLast Update : Thu Jun 12 06:25:26 2025  
 Response via : Initial Calibration  
 Integrator: ChemStation

Volume Inj. : 2 µl  
 Signal #1 Phase : ZB-MR1 Signal #2 Phase: ZB-MR2  
 Signal #1 Info : 30Mx0.32mmx 0.50µ Signal #2 Info : 30M x 0.32mm x 0.25µm

	Compound	RT#1	RT#2	Resp#1	Resp#2	ng/ml	ng/ml
42)	L9 AR-1268-2	7.662	7.625	277.9E6	120.7E6	284.353	289.695
43)	L9 AR-1268-3	7.870	7.831	5776555	2111846	7.048	6.663
44)	L9 AR-1268-4	8.160	8.120	107.9E6	35660702	313.802	308.331
45)	L9 AR-1268-5	8.454	8.409	25147178	9246105	11.325	12.759

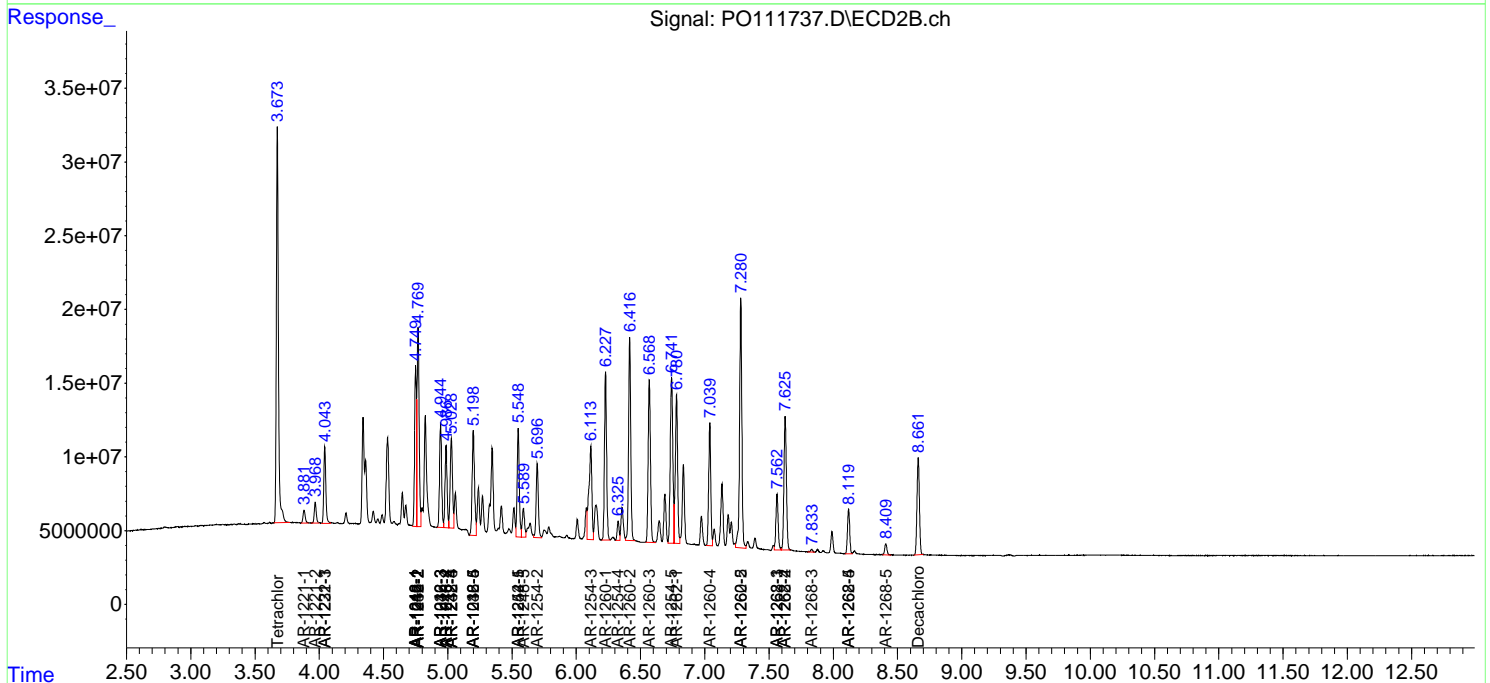
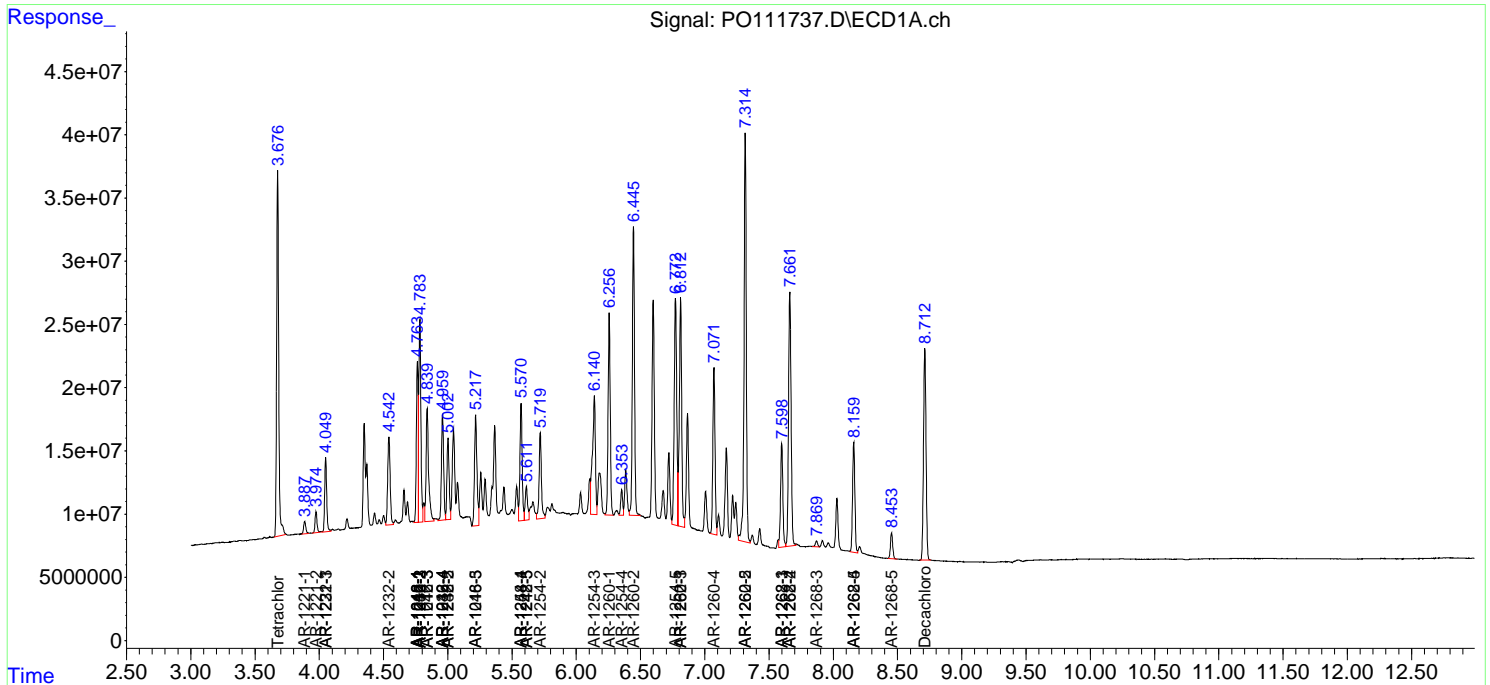
(f)=RT Delta > 1/2 Window (#)=Amounts differ by > 25% (m)=manual int.

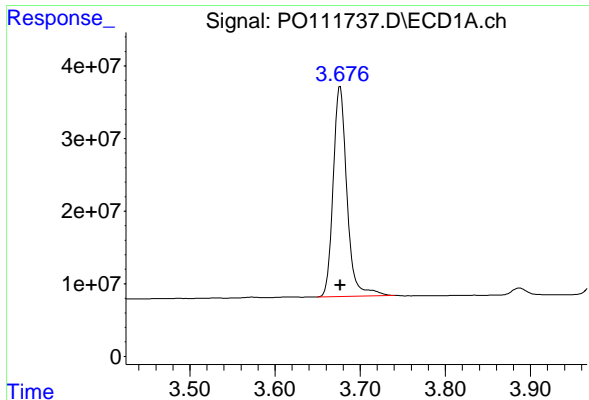
Data Path : Z:\pestpcbsrv\HPCHEM1\ECD\_O\Data\PO061925\  
 Data File : PO111737.D  
 Signal(s) : Signal #1: ECD1A.ch Signal #2: ECD2B.ch  
 Acq On : 19 Jun 2025 19:49  
 Operator : YP/AJ  
 Sample : AR1660CCC500  
 Misc :  
 ALS Vial : 3 Sample Multiplier: 1

Instrument :  
 ECD\_O  
 ClientSampleId :  
 AR1660CCC500

Integration File signal 1: autoint1.e  
 Integration File signal 2: autoint2.e  
 Quant Time: Jun 19 23:01:24 2025  
 Quant Method : Z:\pestpcbsrv\HPCHEM1\ECD\_O\methods\PO061125.M  
 Quant Title : GC EXTRACTABLES  
 QLast Update : Thu Jun 12 06:25:26 2025  
 Response via : Initial Calibration  
 Integrator: ChemStation

Volume Inj. : 2 µl  
 Signal #1 Phase : ZB-MR1 Signal #2 Phase: ZB-MR2  
 Signal #1 Info : 30Mx0.32mmx 0.50µm Signal #2 Info : 30M x 0.32mm x 0.25µm

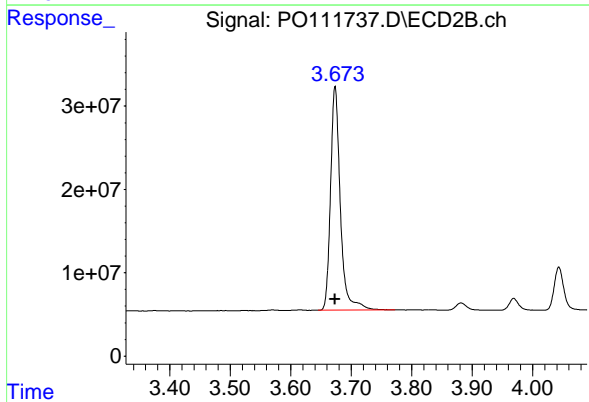




#1 Tetrachloro-m-xylene

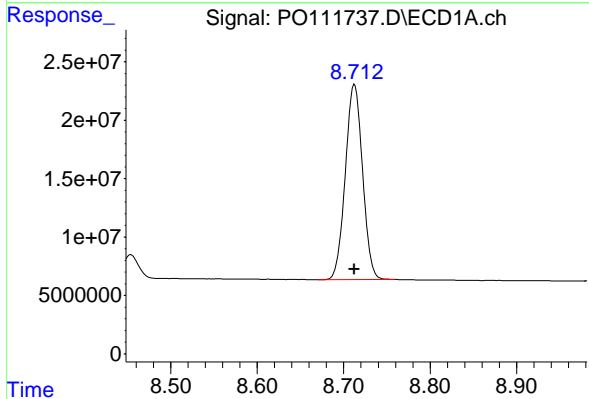
R.T.: 3.676 min  
 Delta R.T.: 0.000 min  
 Response: 325211093  
 Conc: 56.47 ng/ml

Instrument :  
 ECD\_O  
 ClientSampleId :  
 AR1660CCC500



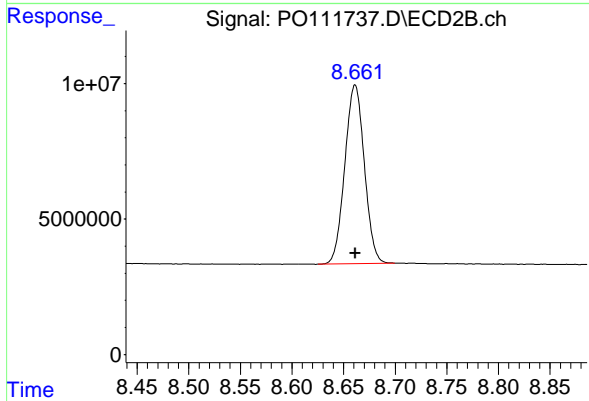
#1 Tetrachloro-m-xylene

R.T.: 3.673 min  
 Delta R.T.: 0.000 min  
 Response: 302492589  
 Conc: 53.85 ng/ml



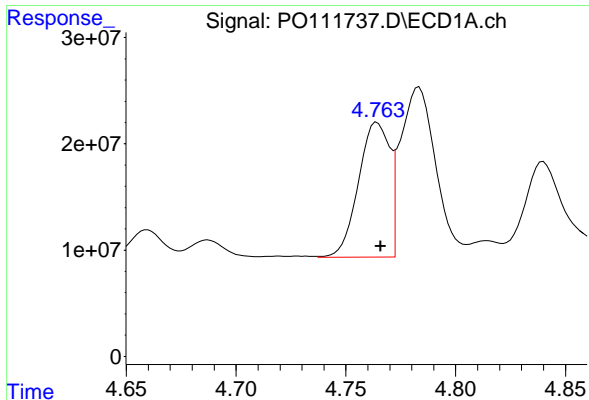
#2 Decachlorobiphenyl

R.T.: 8.713 min  
 Delta R.T.: 0.000 min  
 Response: 230820173  
 Conc: 43.97 ng/ml



#2 Decachlorobiphenyl

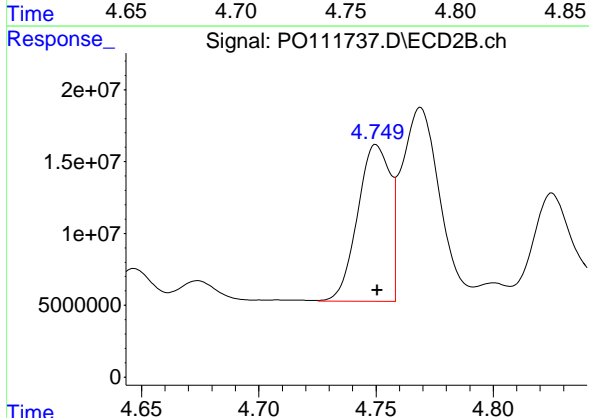
R.T.: 8.661 min  
 Delta R.T.: 0.000 min  
 Response: 86655929  
 Conc: 48.75 ng/ml



#3 AR-1016-1

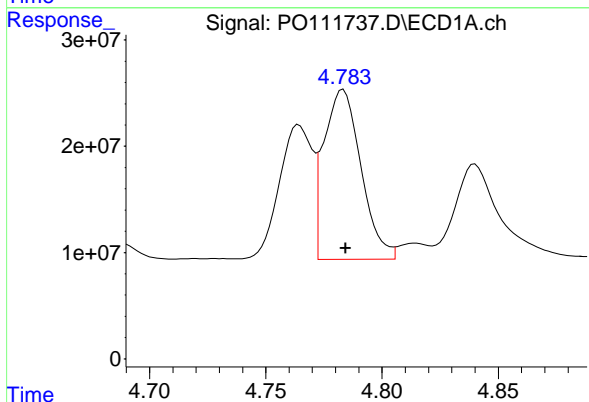
R.T.: 4.764 min  
 Delta R.T.: -0.002 min  
 Response: 124939138  
 Conc: 523.74 ng/ml

Instrument :  
 ECD\_O  
 ClientSampleId :  
 AR1660CCC500



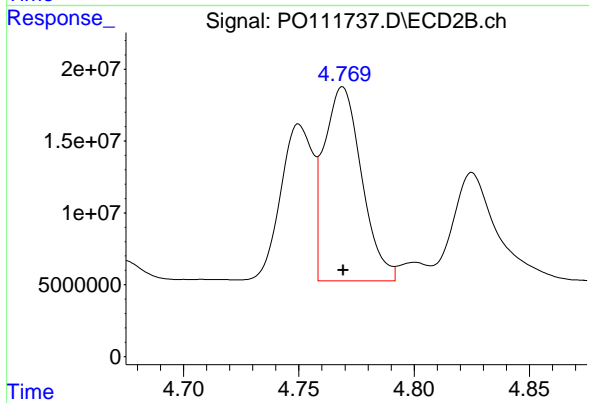
#3 AR-1016-1

R.T.: 4.750 min  
 Delta R.T.: 0.000 min  
 Response: 105630429  
 Conc: 536.83 ng/ml



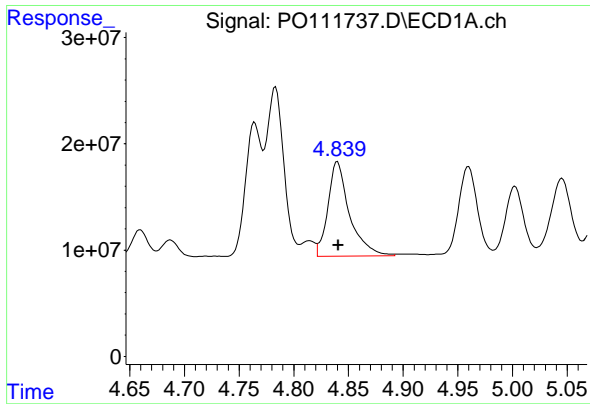
#4 AR-1016-2

R.T.: 4.783 min  
 Delta R.T.: -0.001 min  
 Response: 178152300  
 Conc: 535.40 ng/ml



#4 AR-1016-2

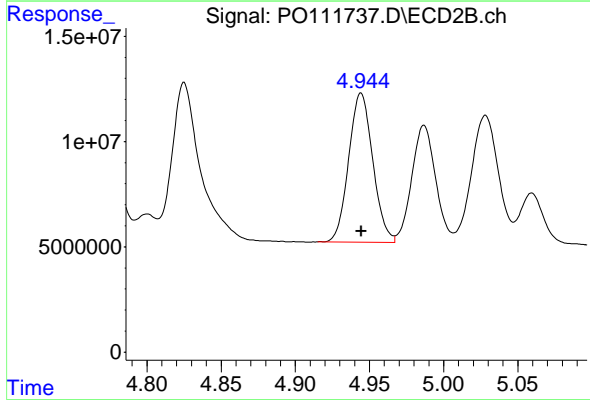
R.T.: 4.769 min  
 Delta R.T.: 0.000 min  
 Response: 152105938  
 Conc: 533.93 ng/ml



#5 AR-1016-3

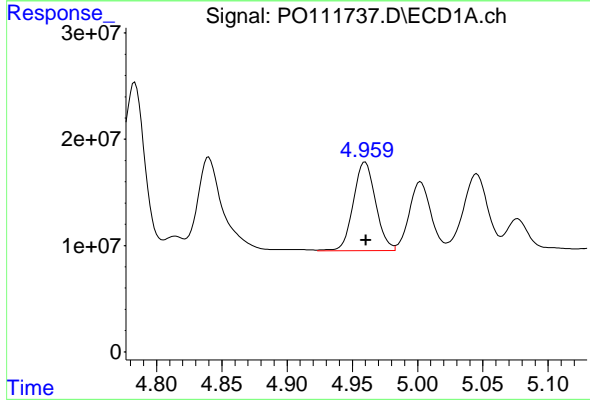
R.T.: 4.840 min  
 Delta R.T.: 0.000 min  
 Response: 122563124  
 Conc: 532.56 ng/ml

Instrument :  
 ECD\_O  
 ClientSampleId :  
 AR1660CCC500



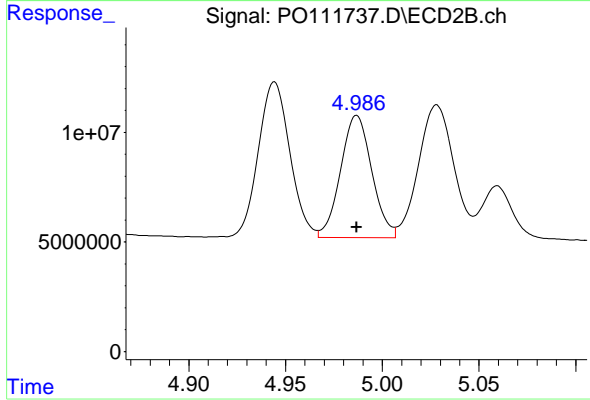
#5 AR-1016-3

R.T.: 4.944 min  
 Delta R.T.: 0.000 min  
 Response: 80121589  
 Conc: 533.29 ng/ml



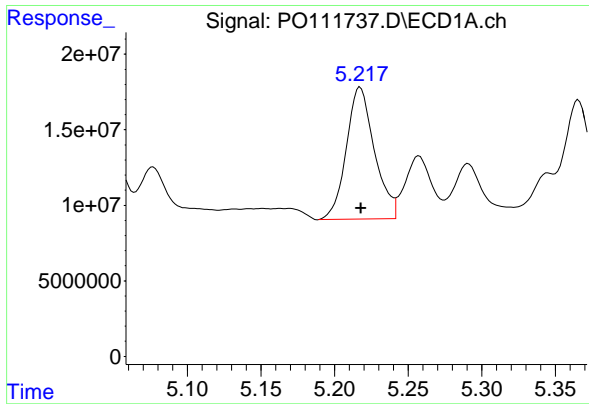
#6 AR-1016-4

R.T.: 4.960 min  
 Delta R.T.: 0.000 min  
 Response: 99319934  
 Conc: 535.52 ng/ml



#6 AR-1016-4

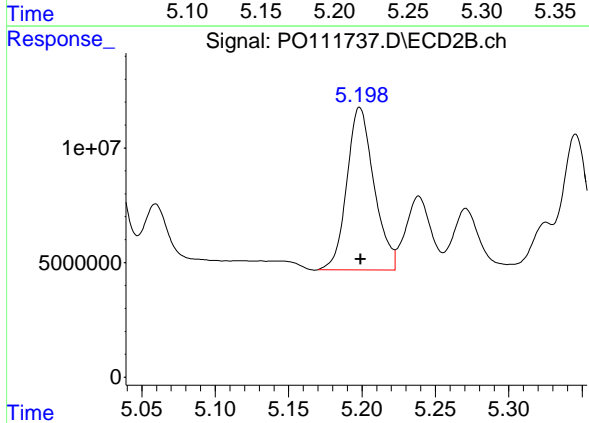
R.T.: 4.987 min  
 Delta R.T.: 0.000 min  
 Response: 62536729  
 Conc: 513.49 ng/ml



#7 AR-1016-5

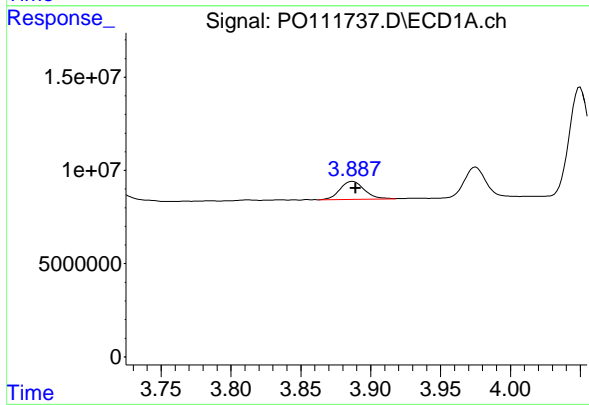
R.T.: 5.217 min  
 Delta R.T.: 0.000 min  
 Response: 116367305  
 Conc: 623.47 ng/ml

Instrument :  
 ECD\_O  
 ClientSampleId :  
 AR1660CCC500



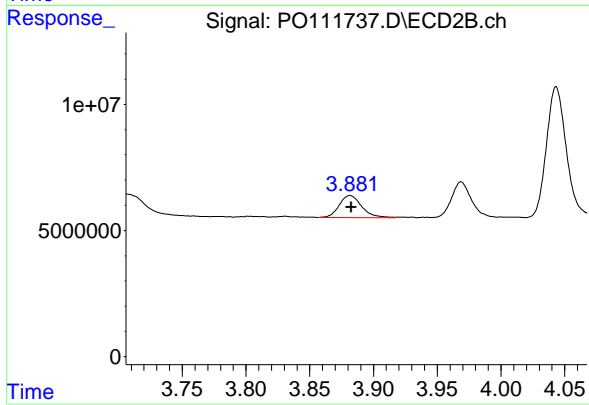
#7 AR-1016-5

R.T.: 5.198 min  
 Delta R.T.: 0.000 min  
 Response: 91632591  
 Conc: 575.59 ng/ml



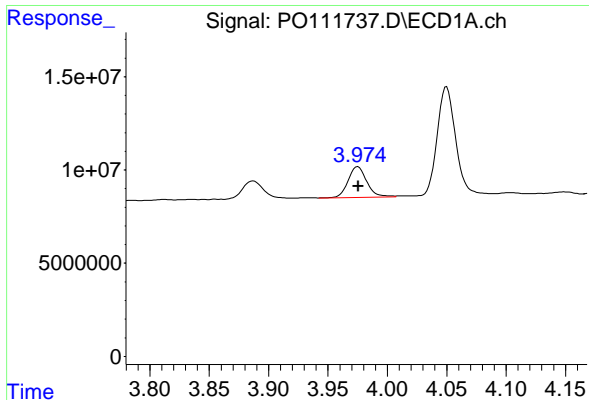
#8 AR-1221-1

R.T.: 3.887 min  
 Delta R.T.: -0.002 min  
 Response: 11927750  
 Conc: 136.98 ng/ml



#8 AR-1221-1

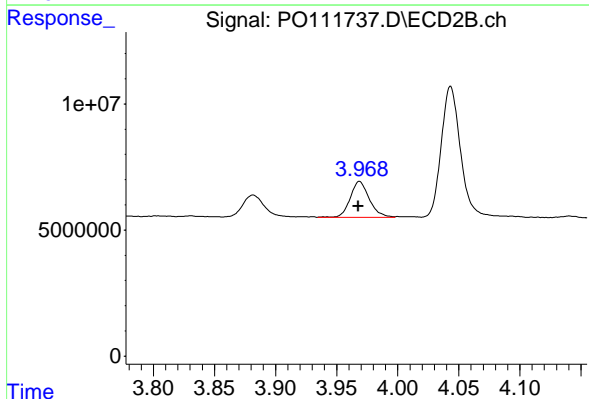
R.T.: 3.882 min  
 Delta R.T.: 0.000 min  
 Response: 10749005  
 Conc: 143.95 ng/ml



#9 AR-1221-2

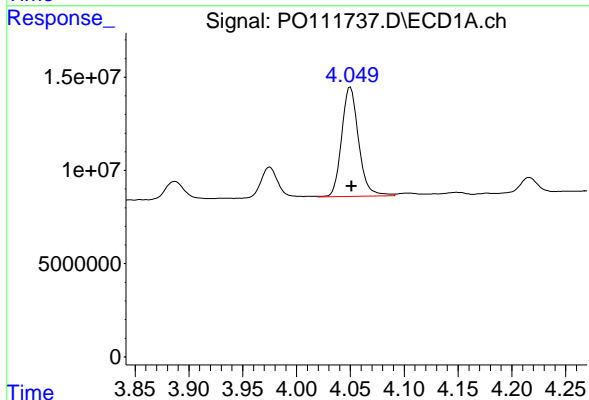
R.T.: 3.975 min  
 Delta R.T.: 0.000 min  
 Response: 18071329  
 Conc: 281.63 ng/ml

Instrument :  
 ECD\_O  
 ClientSampleId :  
 AR1660CCC500



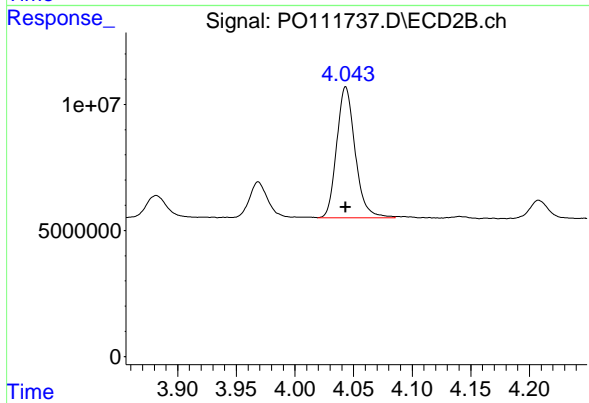
#9 AR-1221-2

R.T.: 3.969 min  
 Delta R.T.: 0.000 min  
 Response: 15406345  
 Conc: 275.36 ng/ml



#10 AR-1221-3

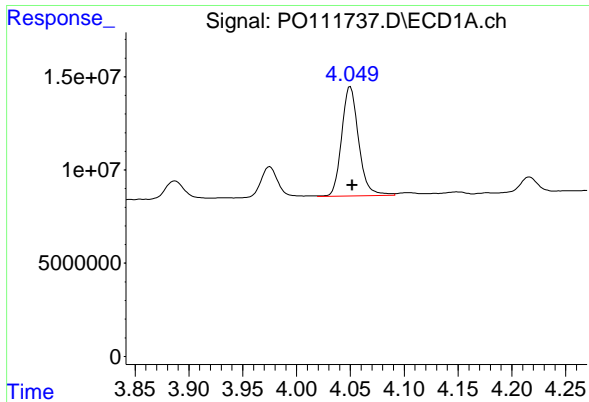
R.T.: 4.050 min  
 Delta R.T.: -0.001 min  
 Response: 64328002  
 Conc: 329.83 ng/ml



#10 AR-1221-3

R.T.: 4.043 min  
 Delta R.T.: 0.000 min  
 Response: 57126626  
 Conc: 332.46 ng/ml

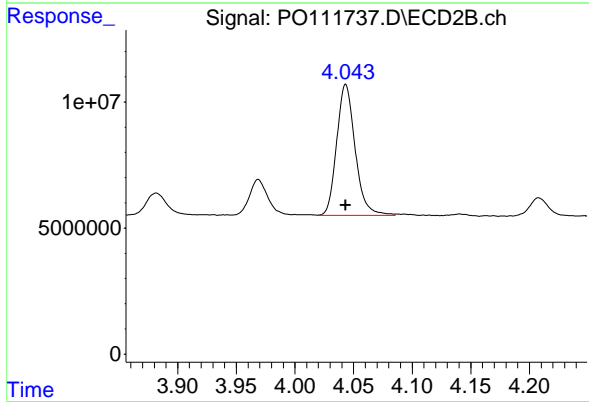




#11 AR-1232-1

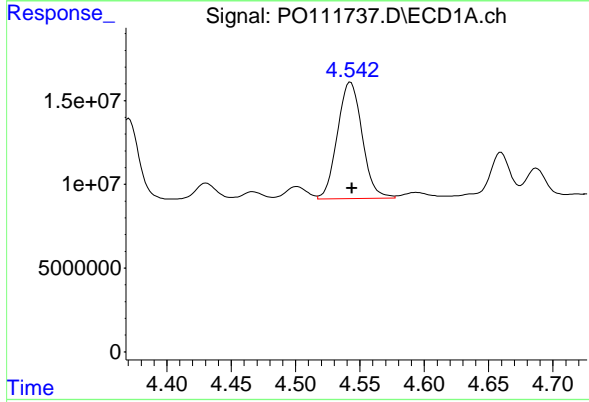
R.T.: 4.050 min  
 Delta R.T.: -0.002 min  
 Response: 64328002  
 Conc: 423.91 ng/ml

Instrument :  
 ECD\_O  
 ClientSampleId :  
 AR1660CCC500



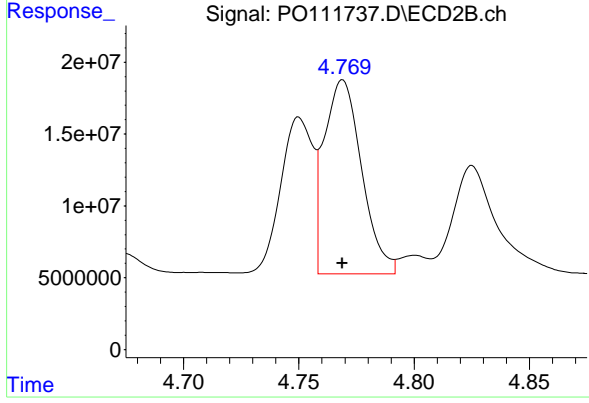
#11 AR-1232-1

R.T.: 4.043 min  
 Delta R.T.: 0.000 min  
 Response: 57126626  
 Conc: 429.56 ng/ml



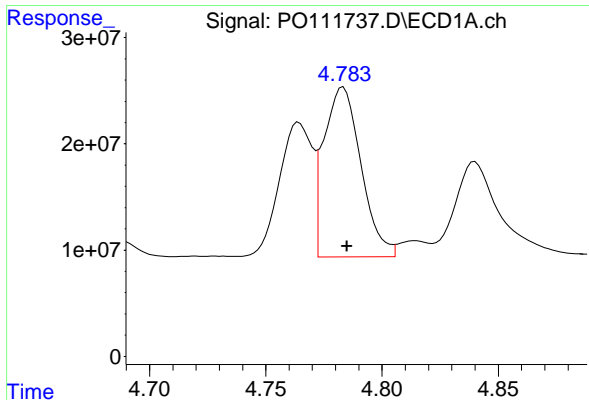
#12 AR-1232-2

R.T.: 4.543 min  
 Delta R.T.: -0.001 min  
 Response: 93233454  
 Conc: 1081.33 ng/ml



#12 AR-1232-2

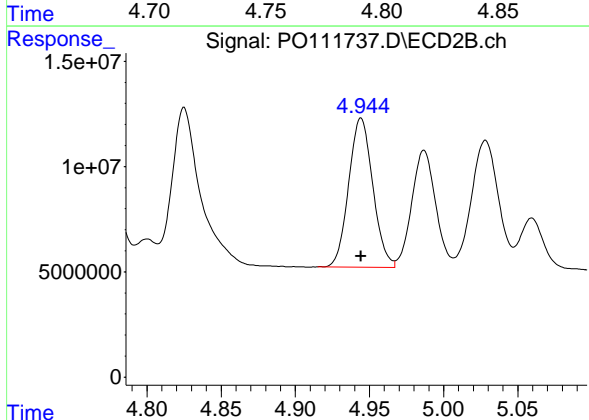
R.T.: 4.769 min  
 Delta R.T.: 0.000 min  
 Response: 152105938  
 Conc: 1154.15 ng/ml



#13 AR-1232-3

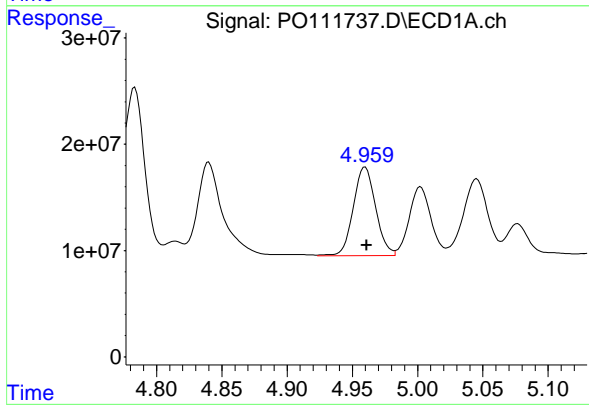
R.T.: 4.783 min  
 Delta R.T.: -0.002 min  
 Response: 178152300  
 Conc: 1093.76 ng/ml

Instrument :  
 ECD\_O  
 ClientSampleId :  
 AR1660CCC500



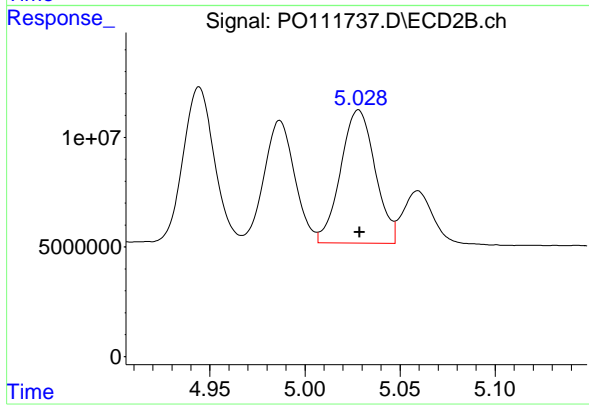
#13 AR-1232-3

R.T.: 4.944 min  
 Delta R.T.: 0.000 min  
 Response: 80121589  
 Conc: 1159.20 ng/ml



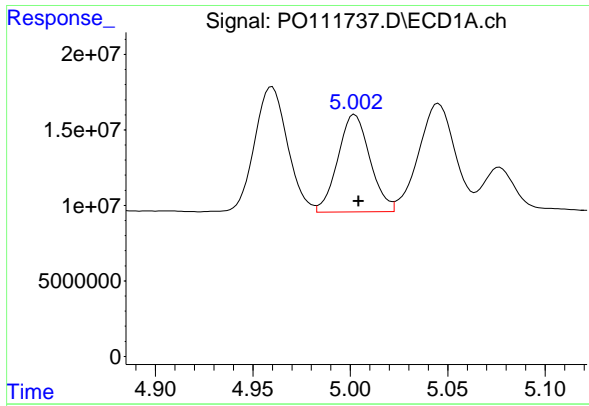
#14 AR-1232-4

R.T.: 4.960 min  
 Delta R.T.: -0.001 min  
 Response: 99319934  
 Conc: 1141.36 ng/ml



#14 AR-1232-4

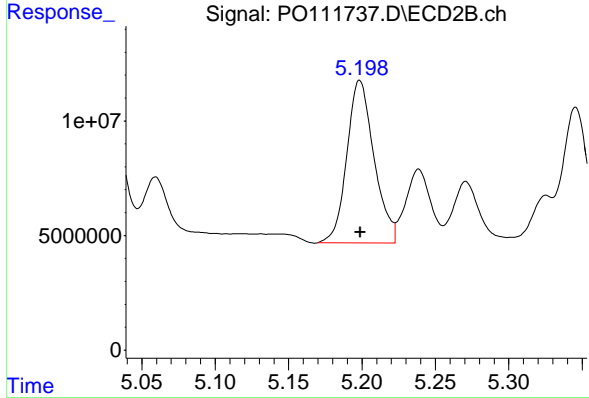
R.T.: 5.028 min  
 Delta R.T.: 0.000 min  
 Response: 76746066  
 Conc: 1268.86 ng/ml



#15 AR-1232-5

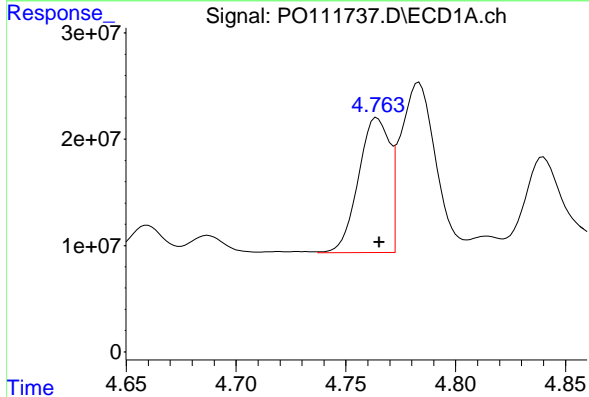
R.T.: 5.002 min  
 Delta R.T.: -0.002 min  
 Response: 74078241  
 Conc: 1309.25 ng/ml

Instrument :  
 ECD\_O  
 ClientSampleId :  
 AR1660CCC500



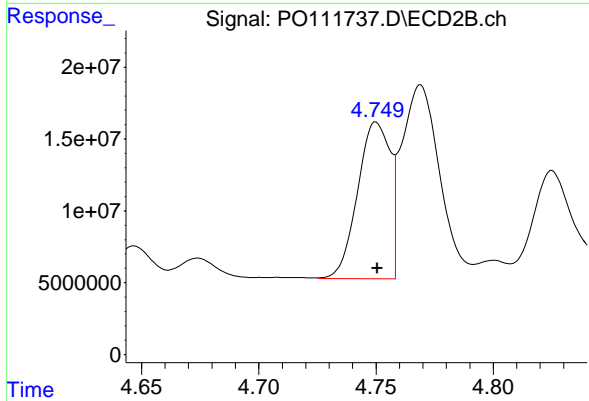
#15 AR-1232-5

R.T.: 5.198 min  
 Delta R.T.: 0.000 min  
 Response: 91632591  
 Conc: 1379.70 ng/ml



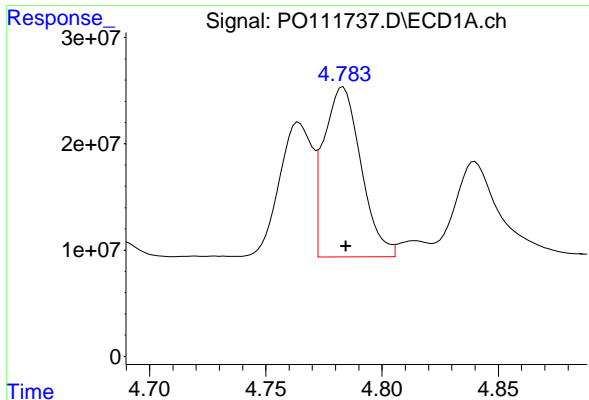
#16 AR-1242-1

R.T.: 4.764 min  
 Delta R.T.: 0.000 min  
 Response: 124939138  
 Conc: 620.22 ng/ml



#16 AR-1242-1

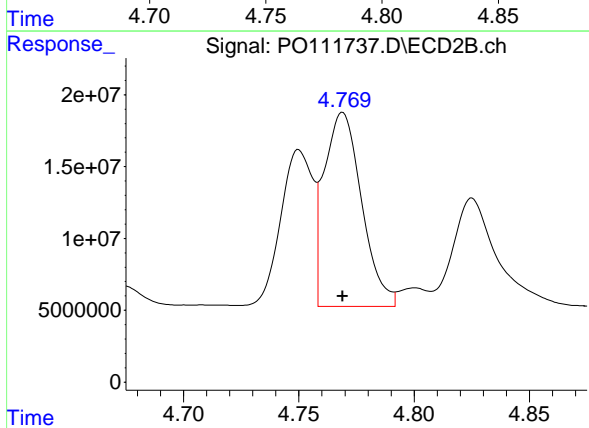
R.T.: 4.750 min  
 Delta R.T.: 0.000 min  
 Response: 105630429  
 Conc: 649.00 ng/ml



#17 AR-1242-2

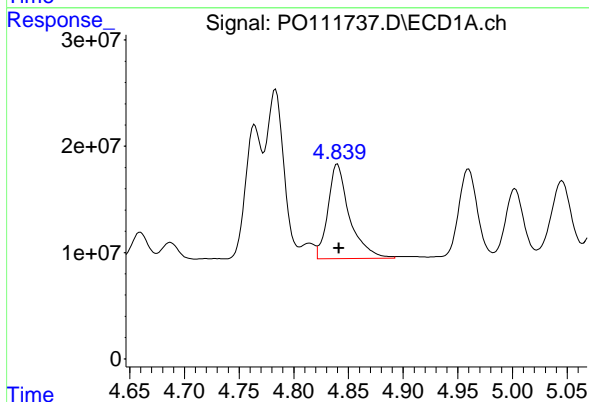
R.T.: 4.783 min  
 Delta R.T.: -0.001 min  
 Response: 178152300  
 Conc: 632.27 ng/ml

Instrument :  
 ECD\_O  
 ClientSampleId :  
 AR1660CCC500



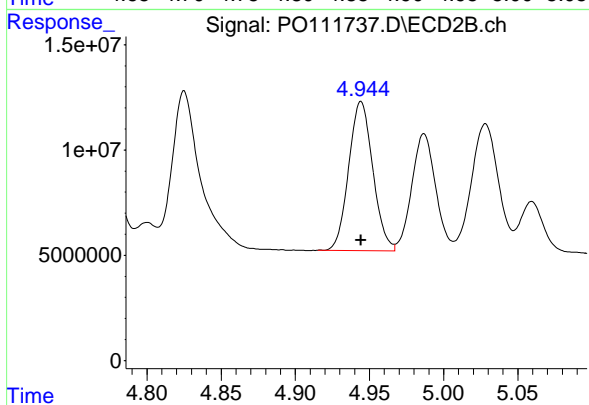
#17 AR-1242-2

R.T.: 4.769 min  
 Delta R.T.: 0.000 min  
 Response: 152105938  
 Conc: 644.35 ng/ml



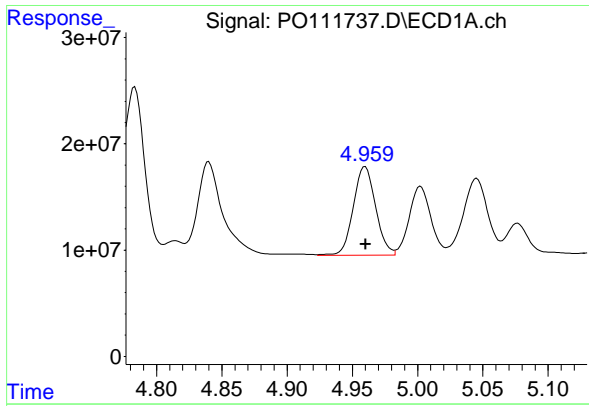
#18 AR-1242-3

R.T.: 4.840 min  
 Delta R.T.: -0.001 min  
 Response: 122563124  
 Conc: 616.44 ng/ml



#18 AR-1242-3

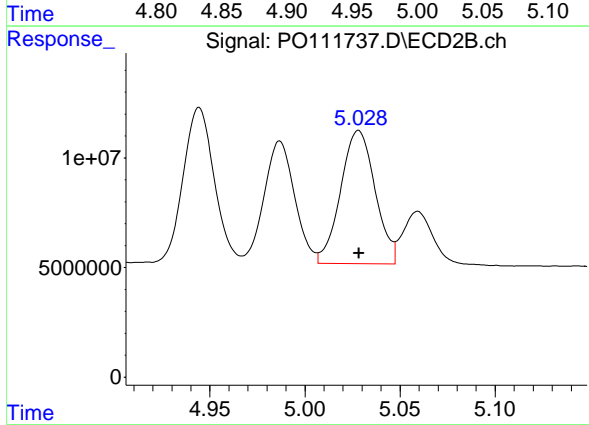
R.T.: 4.944 min  
 Delta R.T.: 0.000 min  
 Response: 80121589  
 Conc: 637.96 ng/ml



#19 AR-1242-4

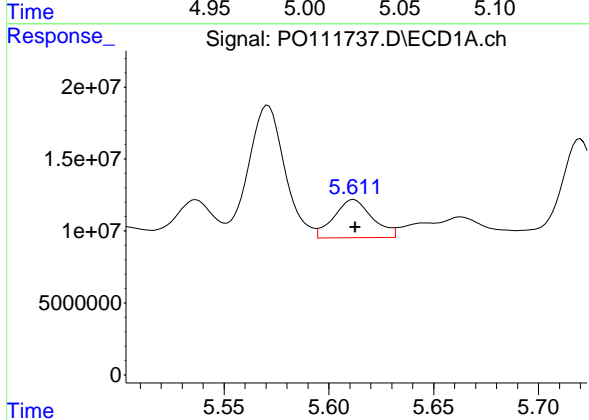
R.T.: 4.960 min  
 Delta R.T.: 0.000 min  
 Response: 99319934  
 Conc: 627.82 ng/ml

Instrument :  
 ECD\_O  
 ClientSampleId :  
 AR1660CCC500



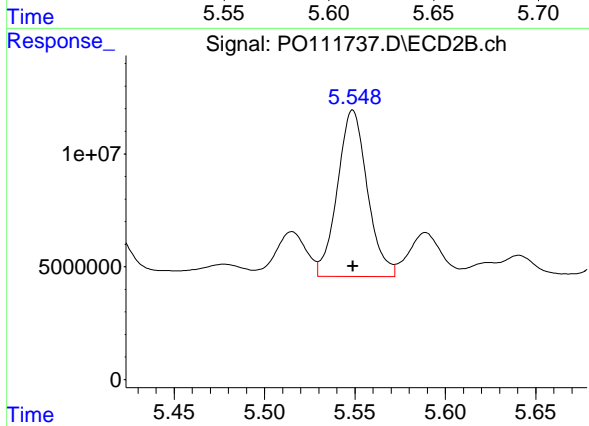
#19 AR-1242-4

R.T.: 5.028 min  
 Delta R.T.: 0.000 min  
 Response: 76746066  
 Conc: 626.20 ng/ml



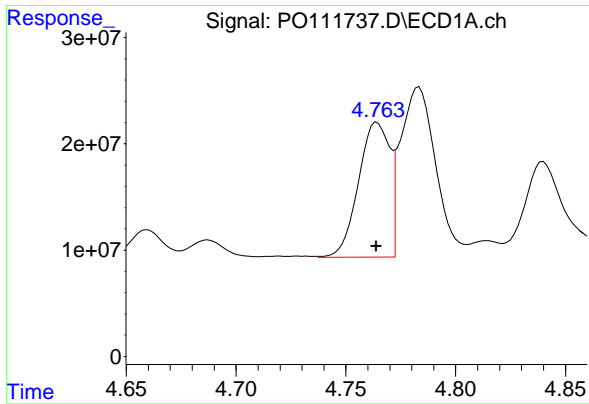
#20 AR-1242-5

R.T.: 5.612 min  
 Delta R.T.: 0.000 min  
 Response: 34089727  
 Conc: 203.87 ng/ml



#20 AR-1242-5

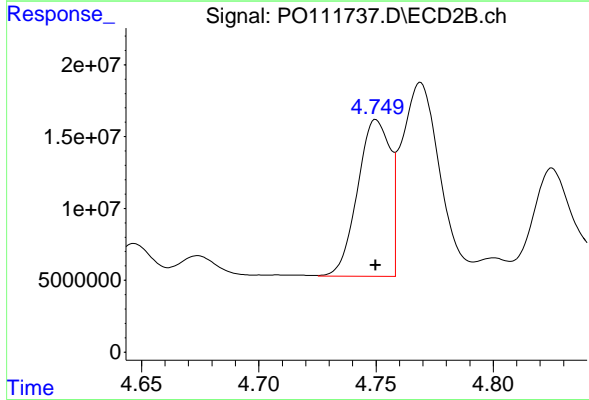
R.T.: 5.549 min  
 Delta R.T.: 0.000 min  
 Response: 84980220  
 Conc: 566.95 ng/ml



#21 AR-1248-1

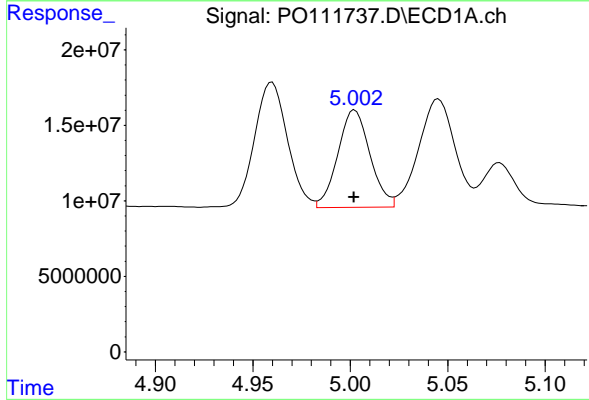
R.T.: 4.764 min  
 Delta R.T.: 0.000 min  
 Response: 124939138  
 Conc: 774.74 ng/ml

Instrument :  
 ECD\_O  
 ClientSampleId :  
 AR1660CCC500



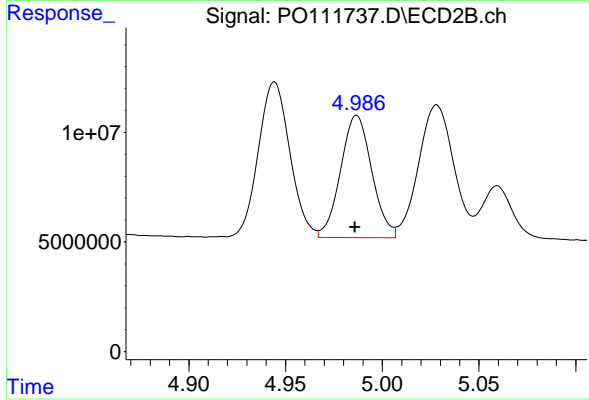
#21 AR-1248-1

R.T.: 4.750 min  
 Delta R.T.: 0.000 min  
 Response: 105630429  
 Conc: 792.52 ng/ml



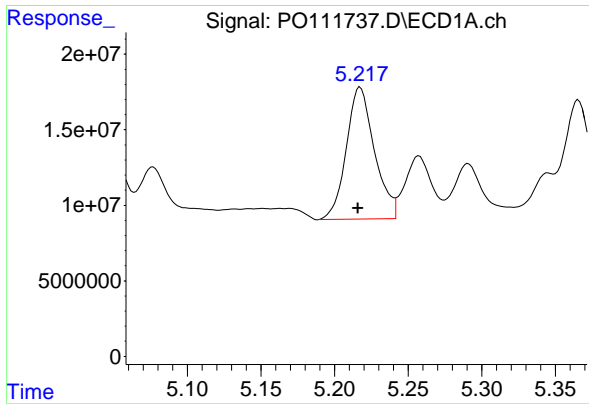
#22 AR-1248-2

R.T.: 5.002 min  
 Delta R.T.: 0.000 min  
 Response: 74078241  
 Conc: 343.58 ng/ml



#22 AR-1248-2

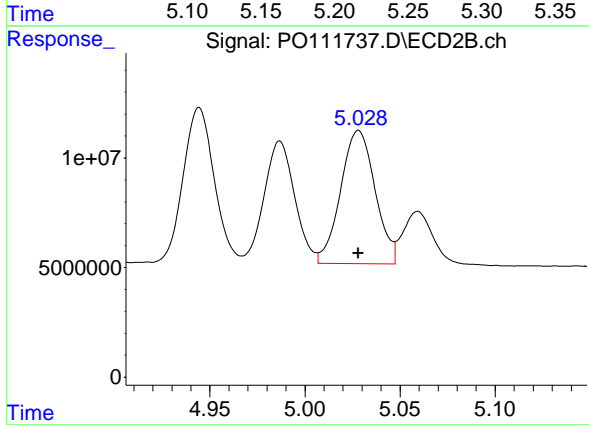
R.T.: 4.987 min  
 Delta R.T.: 0.000 min  
 Response: 62536729  
 Conc: 351.02 ng/ml



#23 AR-1248-3

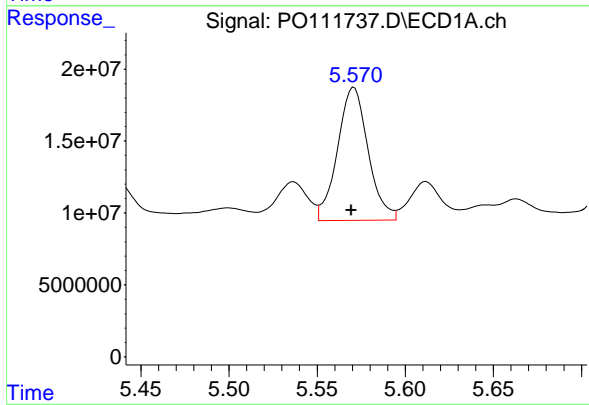
R.T.: 5.217 min  
 Delta R.T.: 0.001 min  
 Response: 116367305  
 Conc: 431.41 ng/ml

Instrument :  
 ECD\_O  
 ClientSampleId :  
 AR1660CCC500



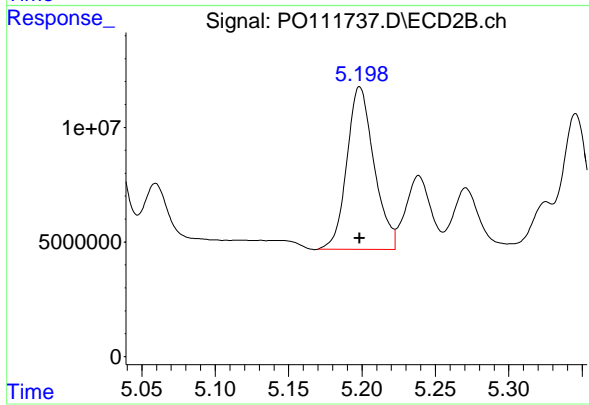
#23 AR-1248-3

R.T.: 5.028 min  
 Delta R.T.: 0.000 min  
 Response: 76746066  
 Conc: 405.13 ng/ml



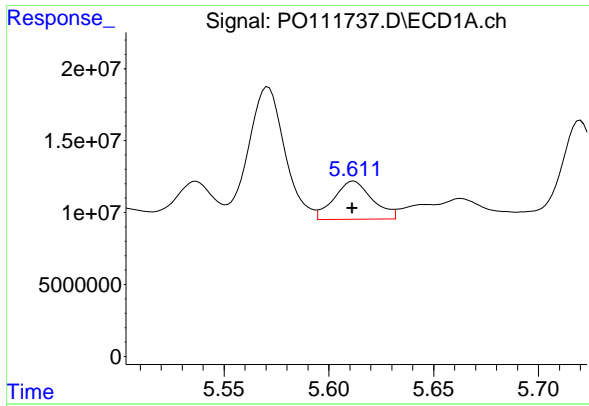
#24 AR-1248-4

R.T.: 5.571 min  
 Delta R.T.: 0.001 min  
 Response: 112107431  
 Conc: 280.41 ng/ml



#24 AR-1248-4

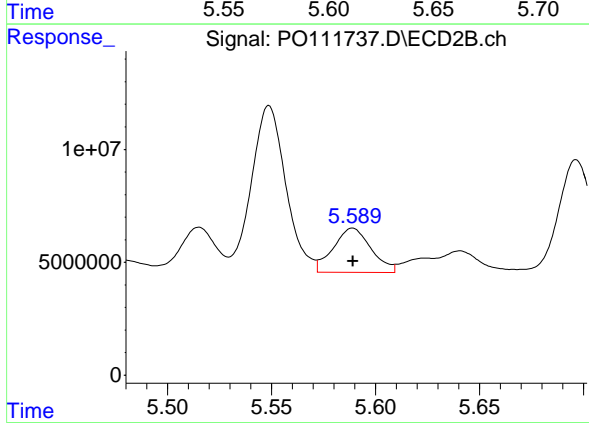
R.T.: 5.198 min  
 Delta R.T.: 0.000 min  
 Response: 91632591  
 Conc: 401.33 ng/ml



#25 AR-1248-5

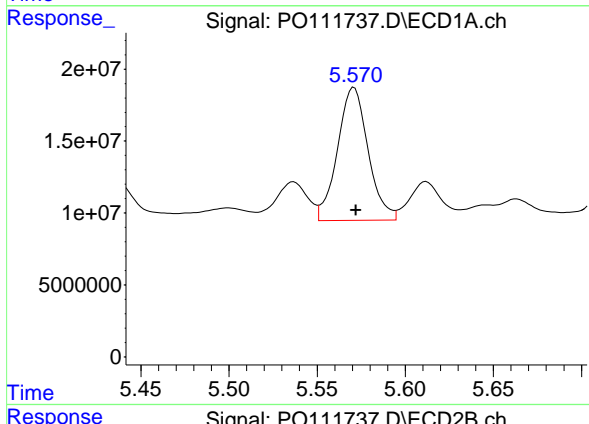
R.T.: 5.612 min  
 Delta R.T.: 0.000 min  
 Response: 34089727  
 Conc: 121.40 ng/ml

Instrument :  
 ECD\_O  
 ClientSampleId :  
 AR1660CCC500



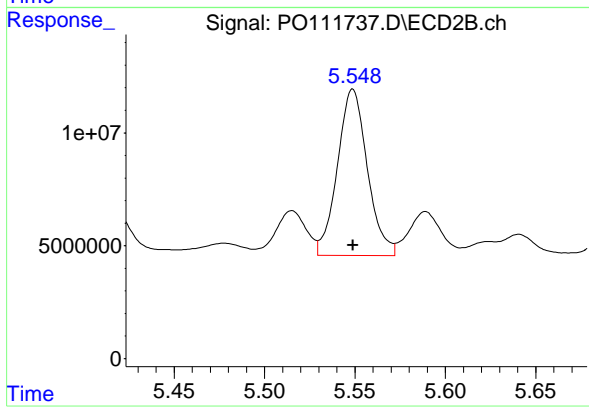
#25 AR-1248-5

R.T.: 5.589 min  
 Delta R.T.: 0.000 min  
 Response: 24763444  
 Conc: 113.72 ng/ml



#26 AR-1254-1

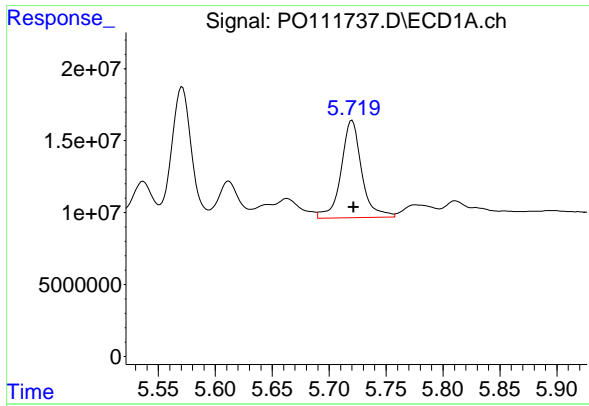
R.T.: 5.571 min  
 Delta R.T.: 0.000 min  
 Response: 112107431  
 Conc: 263.74 ng/ml



#26 AR-1254-1

R.T.: 5.549 min  
 Delta R.T.: 0.000 min  
 Response: 84980220  
 Conc: 263.09 ng/ml

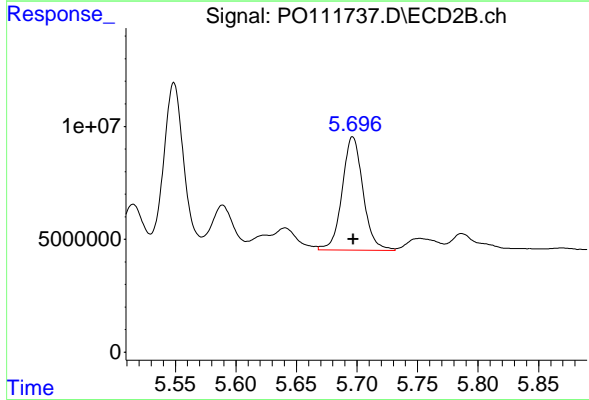




#27 AR-1254-2

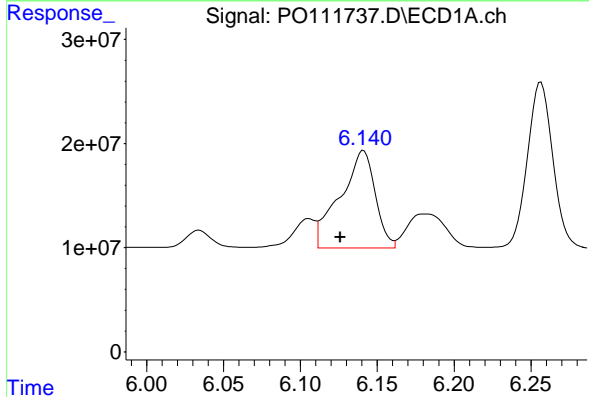
R.T.: 5.720 min  
 Delta R.T.: -0.002 min  
 Response: 85079753  
 Conc: 224.17 ng/ml

Instrument :  
 ECD\_O  
 ClientSampleId :  
 AR1660CCC500



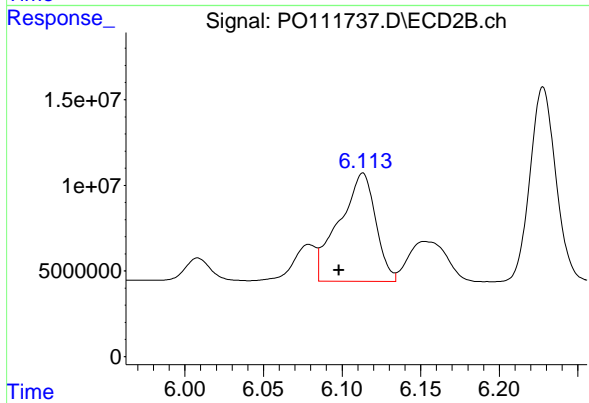
#27 AR-1254-2

R.T.: 5.697 min  
 Delta R.T.: 0.000 min  
 Response: 60312503  
 Conc: 215.93 ng/ml



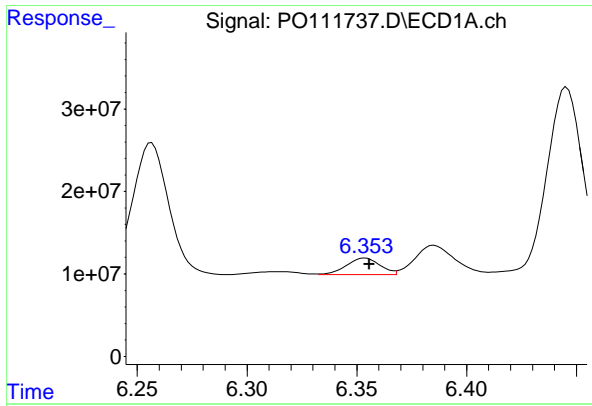
#28 AR-1254-3

R.T.: 6.141 min  
 Delta R.T.: 0.015 min  
 Response: 148605762  
 Conc: 260.10 ng/ml



#28 AR-1254-3

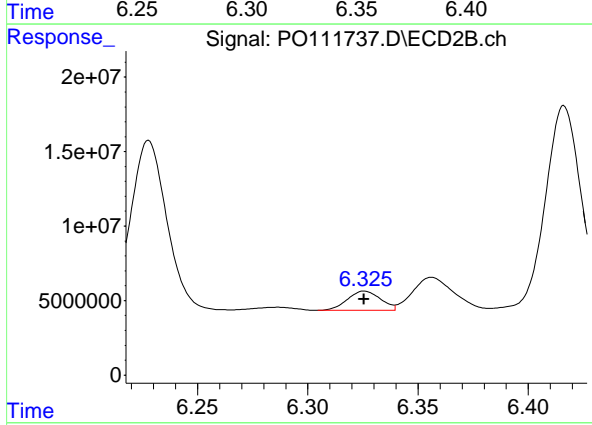
R.T.: 6.113 min  
 Delta R.T.: 0.015 min  
 Response: 102148325  
 Conc: 243.76 ng/ml



#29 AR-1254-4

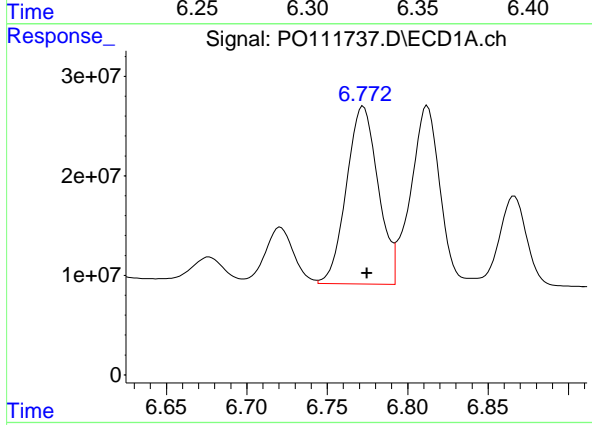
R.T.: 6.354 min  
 Delta R.T.: -0.002 min  
 Response: 21497388  
 Conc: 61.62 ng/ml

Instrument :  
 ECD\_O  
 ClientSampleId :  
 AR1660CCC500



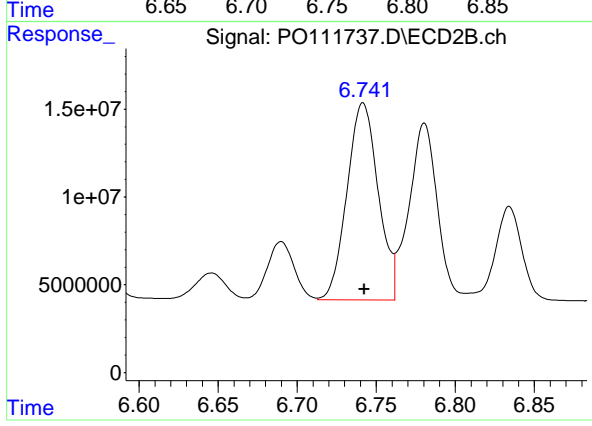
#29 AR-1254-4

R.T.: 6.326 min  
 Delta R.T.: 0.000 min  
 Response: 13517999  
 Conc: 59.34 ng/ml



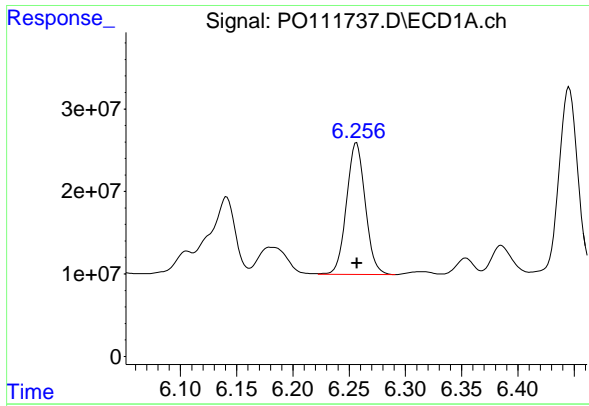
#30 AR-1254-5

R.T.: 6.772 min  
 Delta R.T.: -0.002 min  
 Response: 245001287  
 Conc: 478.40 ng/ml



#30 AR-1254-5

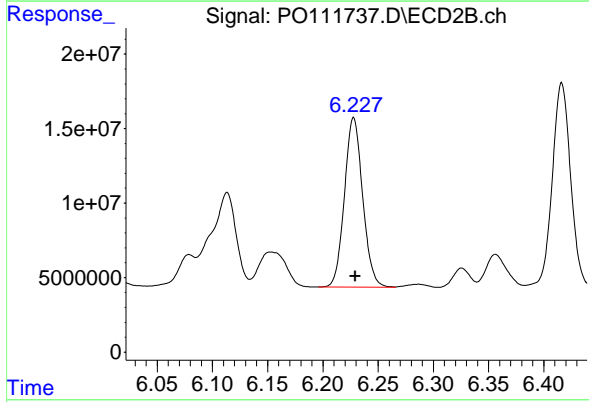
R.T.: 6.742 min  
 Delta R.T.: 0.000 min  
 Response: 154189040  
 Conc: 473.57 ng/ml



#31 AR-1260-1

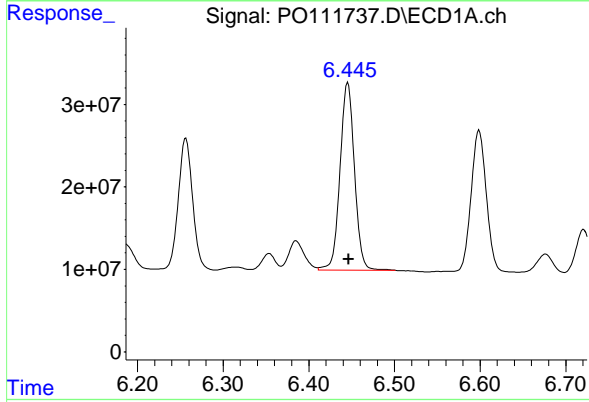
R.T.: 6.257 min  
 Delta R.T.: 0.000 min  
 Response: 185342292  
 Conc: 521.62 ng/ml

Instrument :  
 ECD\_O  
 ClientSampleId :  
 AR1660CCC500



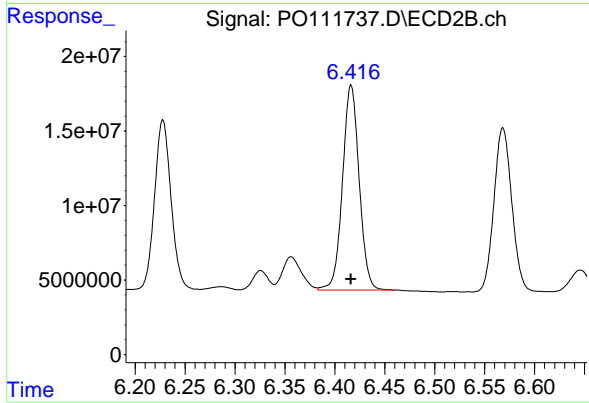
#31 AR-1260-1

R.T.: 6.228 min  
 Delta R.T.: -0.001 min  
 Response: 130791920  
 Conc: 521.26 ng/ml



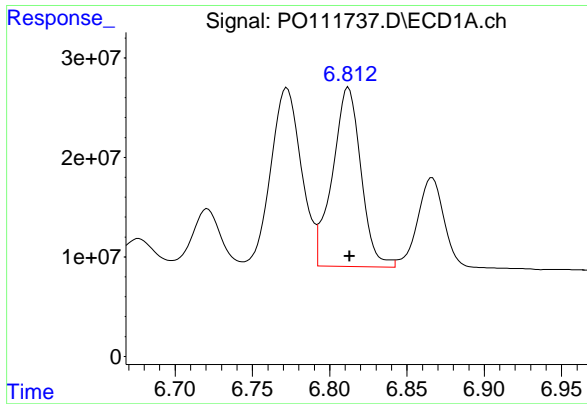
#32 AR-1260-2

R.T.: 6.446 min  
 Delta R.T.: 0.000 min  
 Response: 267177856  
 Conc: 565.49 ng/ml



#32 AR-1260-2

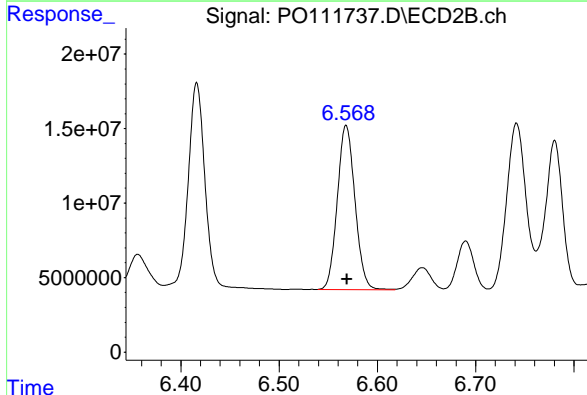
R.T.: 6.416 min  
 Delta R.T.: 0.000 min  
 Response: 159378031  
 Conc: 542.07 ng/ml



#33 AR-1260-3

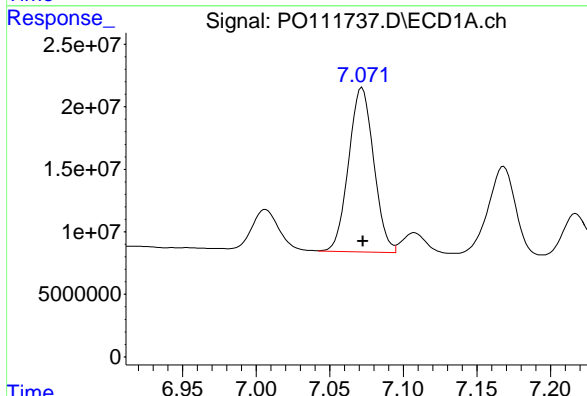
R.T.: 6.812 min  
 Delta R.T.: 0.000 min  
 Response: 230552844  
 Conc: 542.89 ng/ml

Instrument :  
 ECD\_O  
 ClientSampleId :  
 AR1660CCC500



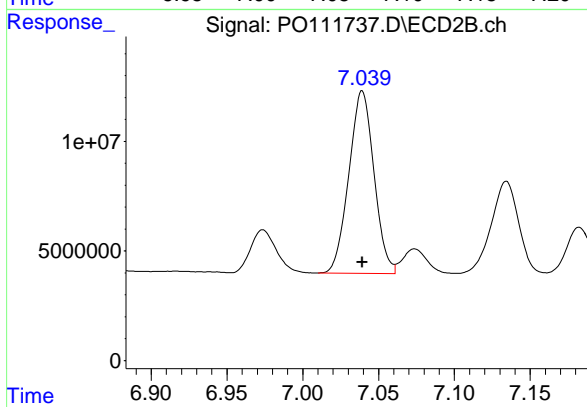
#33 AR-1260-3

R.T.: 6.568 min  
 Delta R.T.: 0.000 min  
 Response: 137812694  
 Conc: 515.81 ng/ml



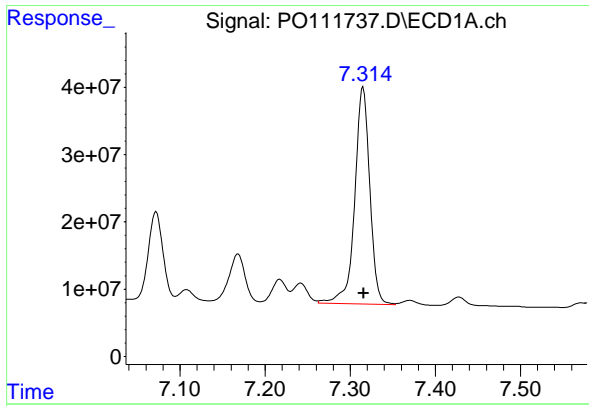
#34 AR-1260-4

R.T.: 7.072 min  
 Delta R.T.: 0.000 min  
 Response: 155699222  
 Conc: 495.15 ng/ml



#34 AR-1260-4

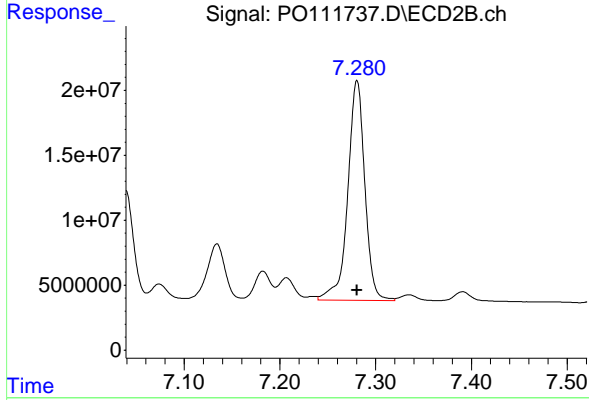
R.T.: 7.039 min  
 Delta R.T.: 0.000 min  
 Response: 96049539  
 Conc: 505.27 ng/ml



#35 AR-1260-5

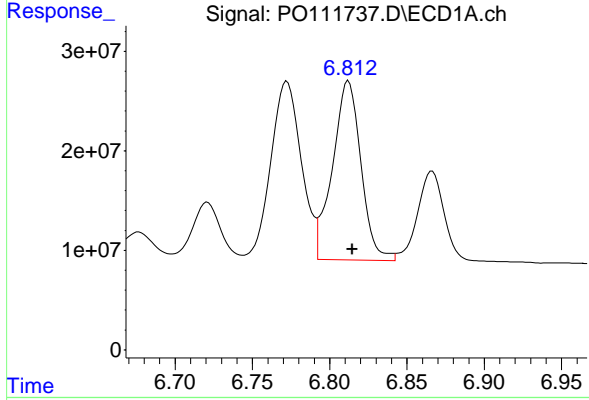
R.T.: 7.315 min  
Delta R.T.: 0.000 min  
Response: 396488073  
Conc: 481.33 ng/ml

Instrument :  
ECD\_O  
ClientSampleId :  
AR1660CCC500



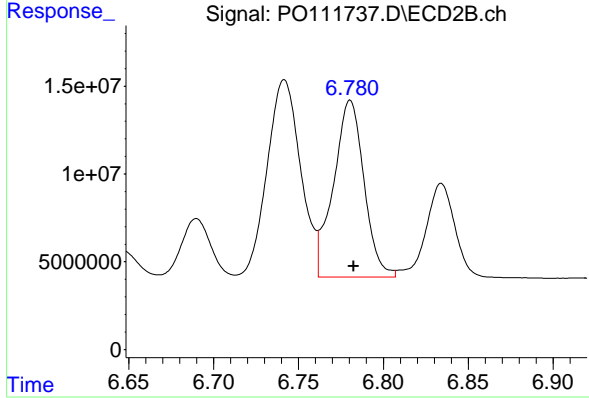
#35 AR-1260-5

R.T.: 7.281 min  
Delta R.T.: 0.000 min  
Response: 211078976  
Conc: 496.63 ng/ml



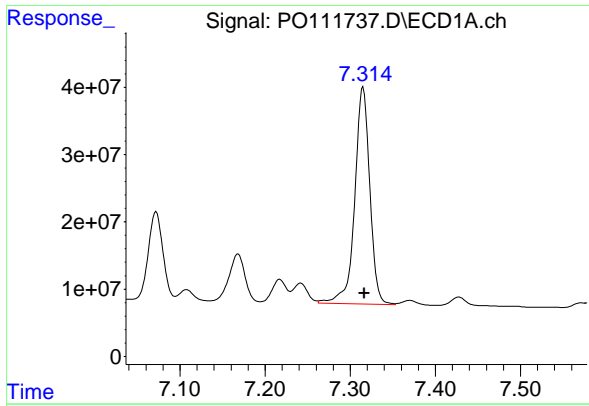
#36 AR-1262-1

R.T.: 6.812 min  
Delta R.T.: -0.002 min  
Response: 230552844  
Conc: 378.03 ng/ml



#36 AR-1262-1

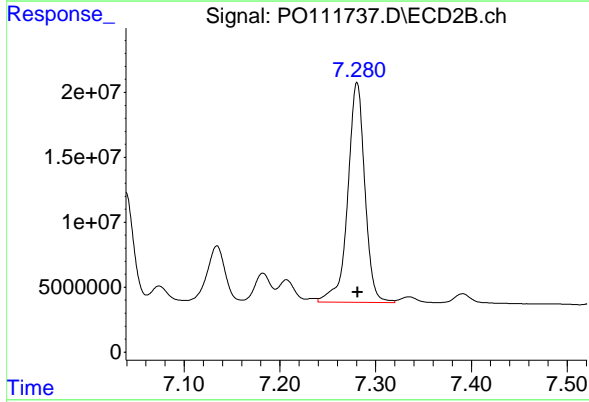
R.T.: 6.780 min  
Delta R.T.: -0.002 min  
Response: 126309630  
Conc: 374.07 ng/ml



#37 AR-1262-2

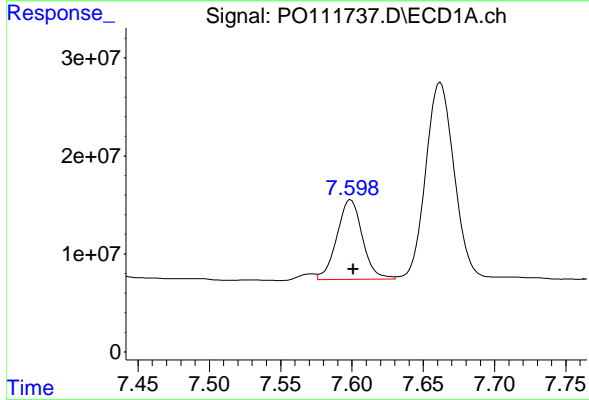
R.T.: 7.315 min  
 Delta R.T.: -0.002 min  
 Response: 396488073  
 Conc: 421.17 ng/ml

Instrument :  
 ECD\_O  
 ClientSampleId :  
 AR1660CCC500



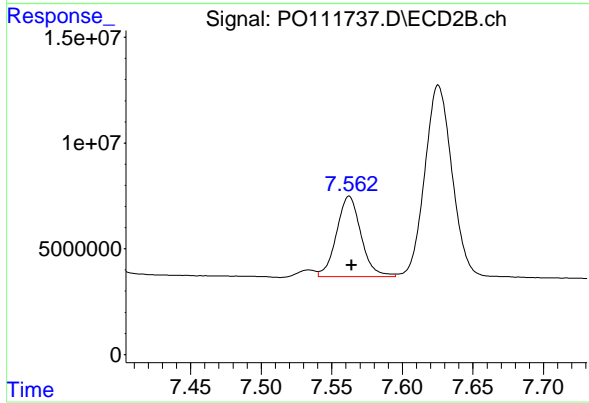
#37 AR-1262-2

R.T.: 7.281 min  
 Delta R.T.: 0.000 min  
 Response: 211078976  
 Conc: 453.18 ng/ml



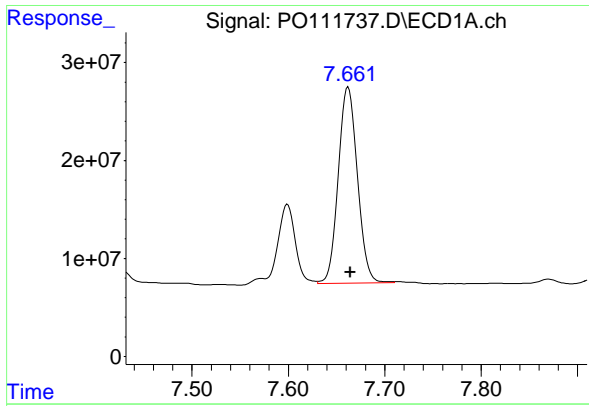
#38 AR-1262-3

R.T.: 7.599 min  
 Delta R.T.: -0.002 min  
 Response: 101555241  
 Conc: 256.05 ng/ml



#38 AR-1262-3

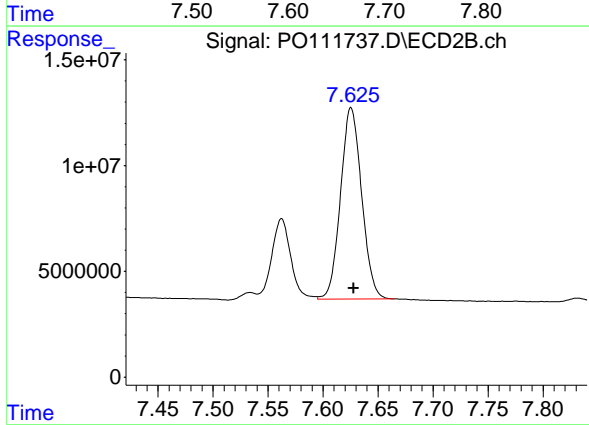
R.T.: 7.562 min  
 Delta R.T.: -0.002 min  
 Response: 45624079  
 Conc: 274.37 ng/ml



#39 AR-1262-4

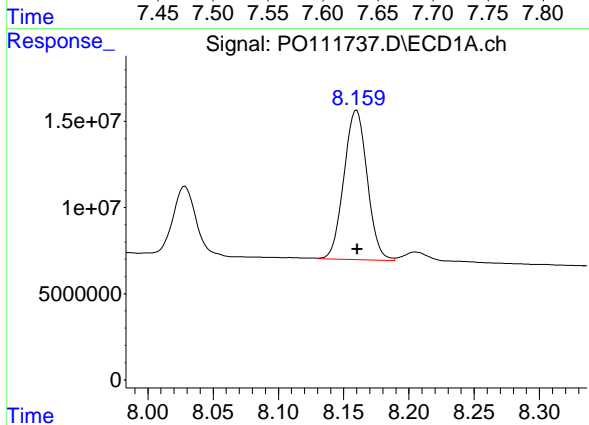
R.T.: 7.662 min  
 Delta R.T.: -0.002 min  
 Response: 277878619  
 Conc: 422.95 ng/ml

Instrument :  
 ECD\_O  
 ClientSampleId :  
 AR1660CCC500



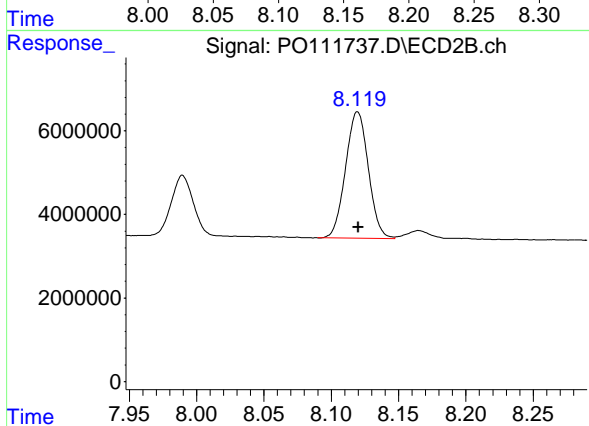
#39 AR-1262-4

R.T.: 7.625 min  
 Delta R.T.: -0.002 min  
 Response: 120658469  
 Conc: 435.48 ng/ml



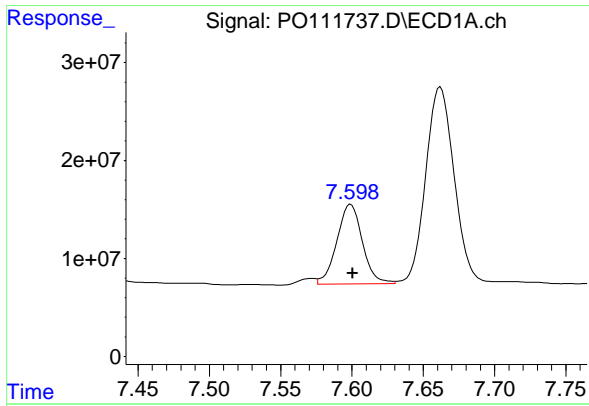
#40 AR-1262-5

R.T.: 8.160 min  
 Delta R.T.: 0.000 min  
 Response: 107942495  
 Conc: 354.30 ng/ml



#40 AR-1262-5

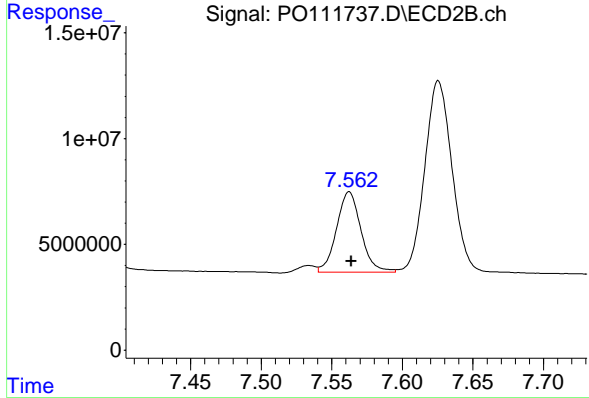
R.T.: 8.120 min  
 Delta R.T.: 0.000 min  
 Response: 35660702  
 Conc: 350.92 ng/ml



#41 AR-1268-1

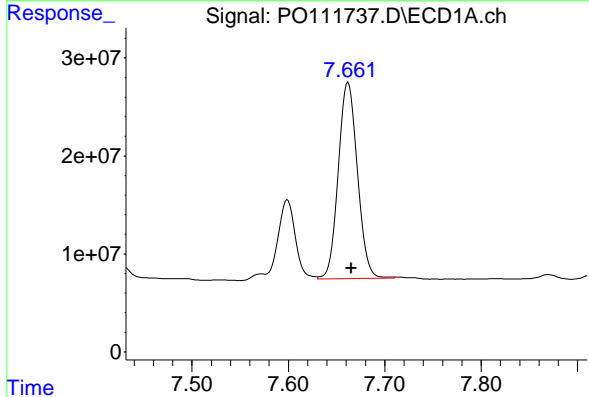
R.T.: 7.599 min  
 Delta R.T.: -0.001 min  
 Response: 101555241  
 Conc: 90.15 ng/ml

Instrument :  
 ECD\_O  
 ClientSampleId :  
 AR1660CCC500



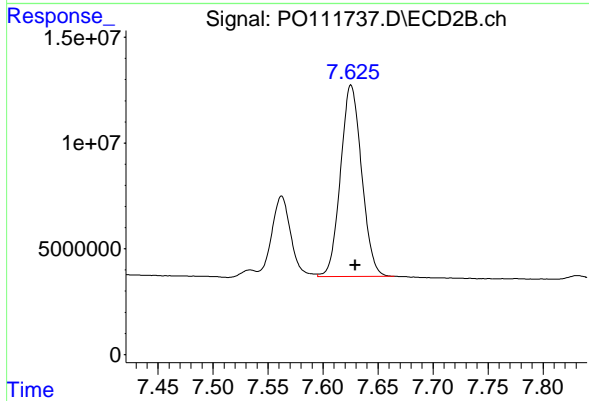
#41 AR-1268-1

R.T.: 7.562 min  
 Delta R.T.: -0.002 min  
 Response: 45624079  
 Conc: 95.37 ng/ml



#42 AR-1268-2

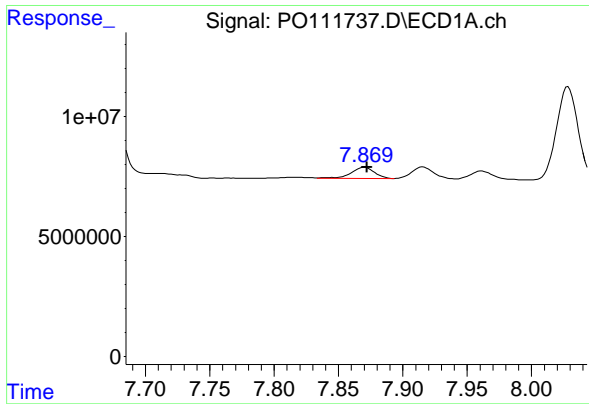
R.T.: 7.662 min  
 Delta R.T.: -0.004 min  
 Response: 277878619  
 Conc: 284.35 ng/ml



#42 AR-1268-2

R.T.: 7.625 min  
 Delta R.T.: -0.004 min  
 Response: 120658469  
 Conc: 289.69 ng/ml

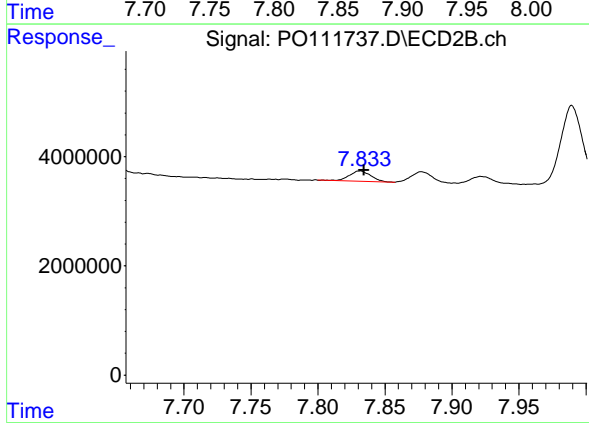




#43 AR-1268-3

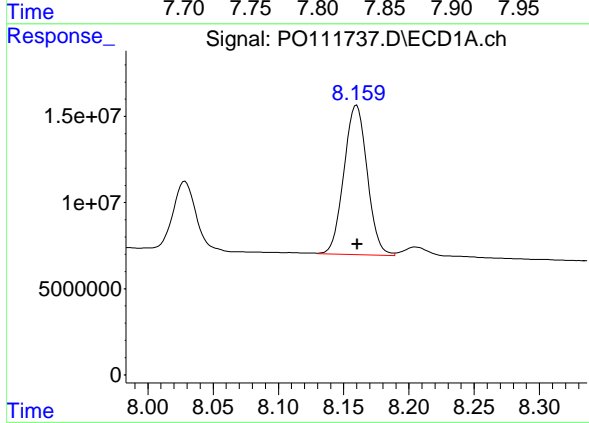
R.T.: 7.870 min  
 Delta R.T.: -0.002 min  
 Response: 5776555  
 Conc: 7.05 ng/ml

Instrument :  
 ECD\_O  
 ClientSampleId :  
 AR1660CCC500



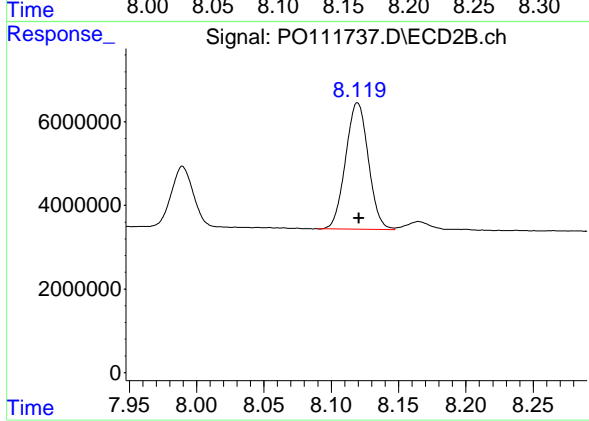
#43 AR-1268-3

R.T.: 7.831 min  
 Delta R.T.: -0.003 min  
 Response: 2111846  
 Conc: 6.66 ng/ml



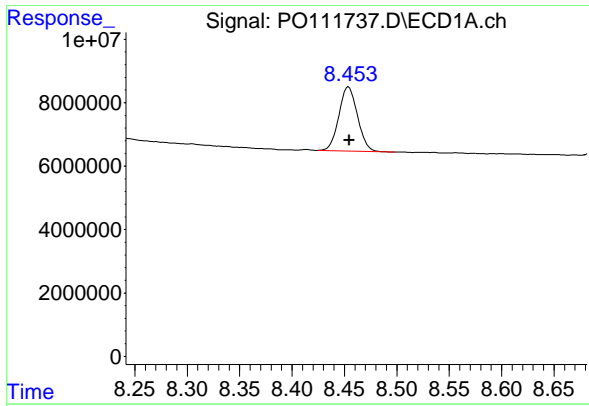
#44 AR-1268-4

R.T.: 8.160 min  
 Delta R.T.: 0.000 min  
 Response: 107942495  
 Conc: 313.80 ng/ml



#44 AR-1268-4

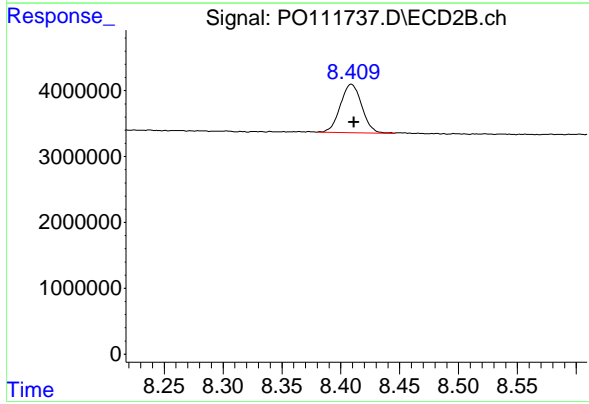
R.T.: 8.120 min  
 Delta R.T.: 0.000 min  
 Response: 35660702  
 Conc: 308.33 ng/ml



#45 AR-1268-5

R.T.: 8.454 min  
 Delta R.T.: 0.000 min  
 Response: 25147178  
 Conc: 11.33 ng/ml

Instrument :  
 ECD\_O  
 ClientSampleId :  
 AR1660CCC500



#45 AR-1268-5

R.T.: 8.409 min  
 Delta R.T.: -0.002 min  
 Response: 9246105  
 Conc: 12.76 ng/ml