

Data Path : Z:\pestpcbsrv\HPCHEM1\ECD_O\Data\P0062023\
 Data File : P0095822.D
 Signal(s) : Signal #1: ECD1A.ch Signal #2: ECD2B.ch
 Acq On : 21 Jun 2023 06:55
 Operator : YP/AJ
 Sample : AR1232ICC500
 Misc :
 ALS Vial : 9 Sample Multiplier: 1

Instrument :
 ECD_O
 ClientSampleId :
 AR1232ICC500

Integration File signal 1: autoint1.e
 Integration File signal 2: autoint2.e
 Quant Time: Jun 21 07:18:32 2023
 Quant Method : Z:\pestpcbsrv\HPCHEM1\ECD_O\methods\P0062023.M
 Quant Title : GC EXTRACTABLES
 QLast Update : Wed Jun 21 07:10:15 2023
 Response via : Initial Calibration
 Integrator: ChemStation

Volume Inj. : 2 µl
 Signal #1 Phase : ZB-MR1 Signal #2 Phase: ZB-MR2
 Signal #1 Info : 30Mx0.32mmx 0.50µ Signal #2 Info : 30M x 0.32mm x 0.25µm

Compound	RT#1	RT#2	Resp#1	Resp#2	ng/ml	ng/ml

System Monitoring Compounds						
1) SA Tetrachlo...	4.413	3.634	158.8E6	73275038	50.000	50.000
2) SA Decachlor...	10.230	8.670	111.5E6	62407537	50.000	50.000
Target Compounds						
8) L2 AR-1221-1	4.623	3.849	9813608	4866216	274.381	283.065
9) L2 AR-1221-2	4.711	3.935	8937853	4493086	336.038	340.686
10) L2 AR-1221-3	4.787	4.011	29403090	15032238	368.450	379.092
11) L3 AR-1232-1	4.787	4.011	29403090	15032238	500.000	500.000
12) L3 AR-1232-2	5.322	4.742	17391922	14862008	500.000	500.000
13) L3 AR-1232-3	5.614	4.919	28428829	7986341	500.000	500.000
14) L3 AR-1232-4	5.775	5.003	14314926	7852967	500.000	500.000
15) L3 AR-1232-5	5.868	5.176	12418841	8997520	500.000	500.000

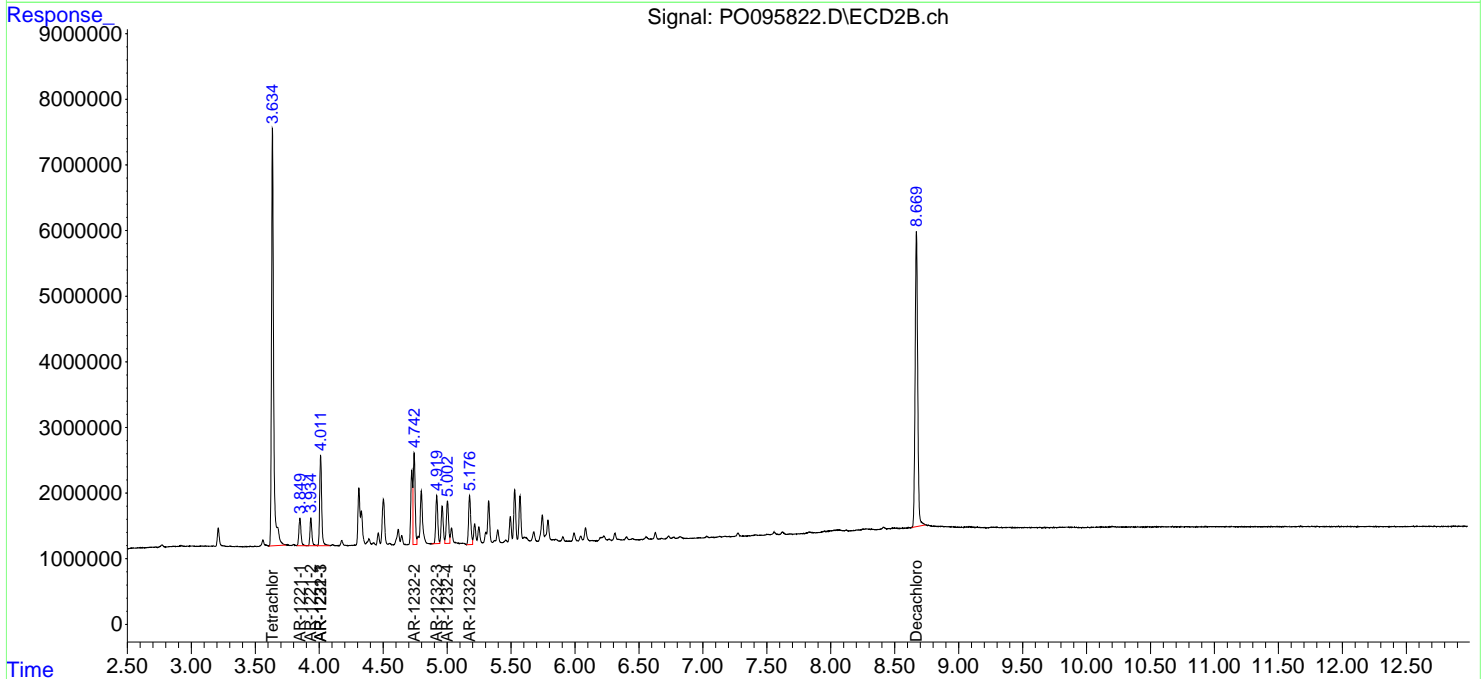
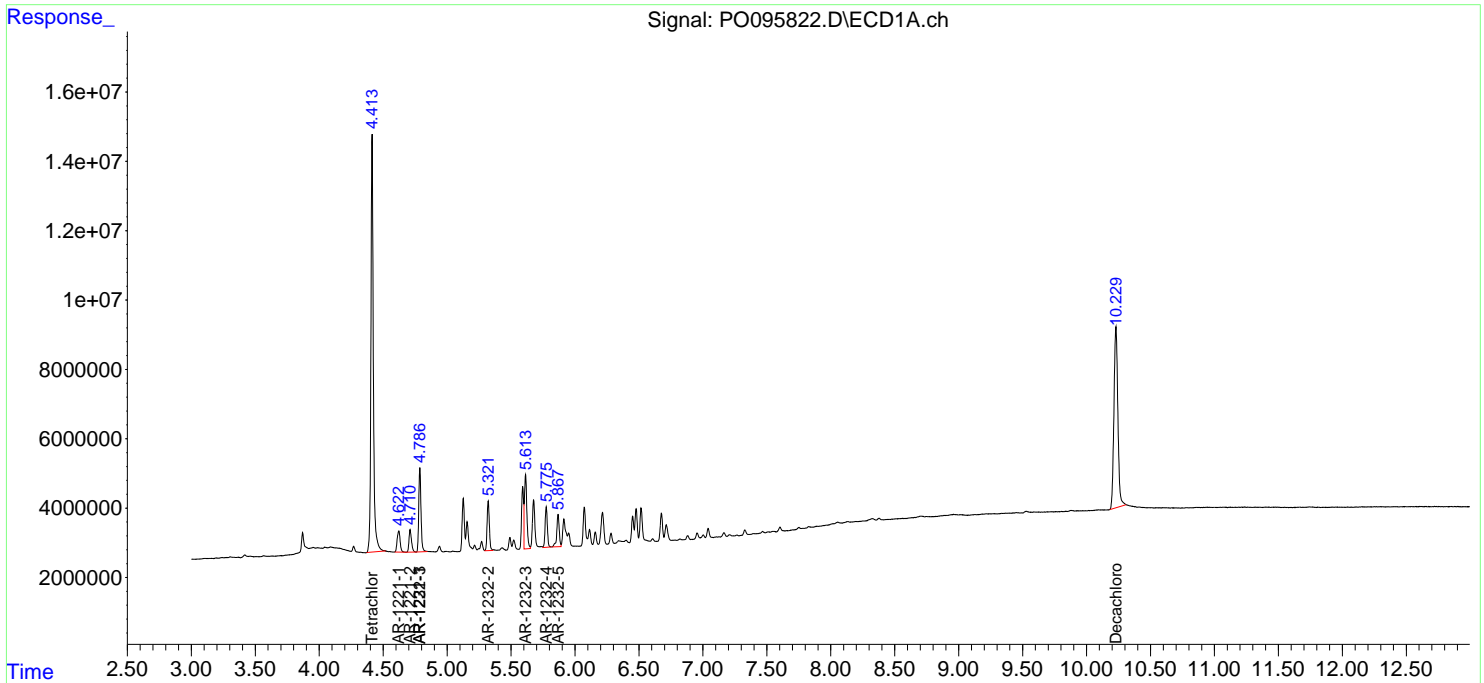
(f)=RT Delta > 1/2 Window (#)=Amounts differ by > 25% (m)=manual int.

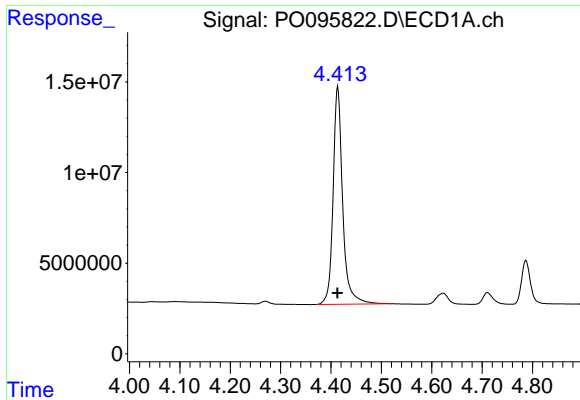
Data Path : Z:\pestpcbsrv\HPCHEM1\ECD_O\Data\PO062023\
 Data File : PO095822.D
 Signal(s) : Signal #1: ECD1A.ch Signal #2: ECD2B.ch
 Acq On : 21 Jun 2023 06:55
 Operator : YP/AJ
 Sample : AR1232ICC500
 Misc :
 ALS Vial : 9 Sample Multiplier: 1

Instrument :
 ECD_O
 ClientSampleId :
 AR1232ICC500

Integration File signal 1: autoint1.e
 Integration File signal 2: autoint2.e
 Quant Time: Jun 21 07:18:32 2023
 Quant Method : Z:\pestpcbsrv\HPCHEM1\ECD_O\methods\PO062023.M
 Quant Title : GC EXTRACTABLES
 QLast Update : Wed Jun 21 07:10:15 2023
 Response via : Initial Calibration
 Integrator: ChemStation

Volume Inj. : 2 µl
 Signal #1 Phase : ZB-MR1 Signal #2 Phase: ZB-MR2
 Signal #1 Info : 30Mx0.32mmx 0.50µ Signal #2 Info : 30M x 0.32mm x 0.25µm

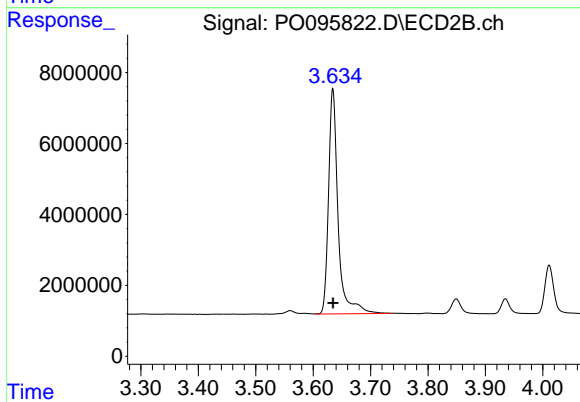




#1 Tetrachloro-m-xylene

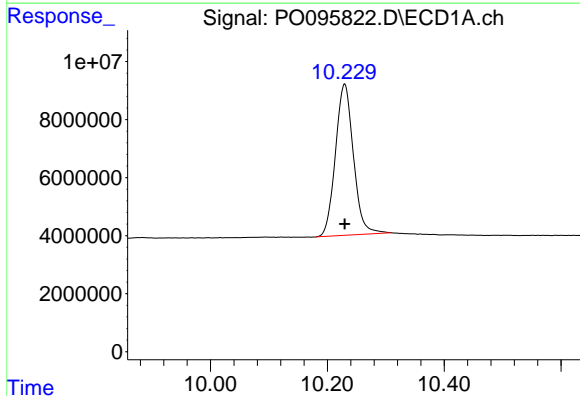
R.T.: 4.413 min
 Delta R.T.: 0.000 min
 Response: 158751489
 Conc: 50.00 ng/ml

Instrument :
 ECD_O
 ClientSampleId :
 AR1232ICC500



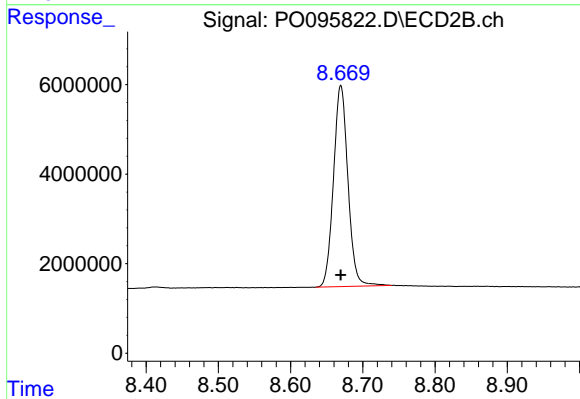
#1 Tetrachloro-m-xylene

R.T.: 3.634 min
 Delta R.T.: 0.000 min
 Response: 73275038
 Conc: 50.00 ng/ml



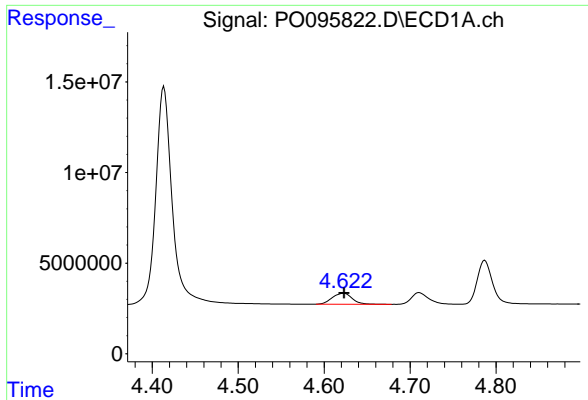
#2 Decachlorobiphenyl

R.T.: 10.230 min
 Delta R.T.: 0.000 min
 Response: 111501199
 Conc: 50.00 ng/ml



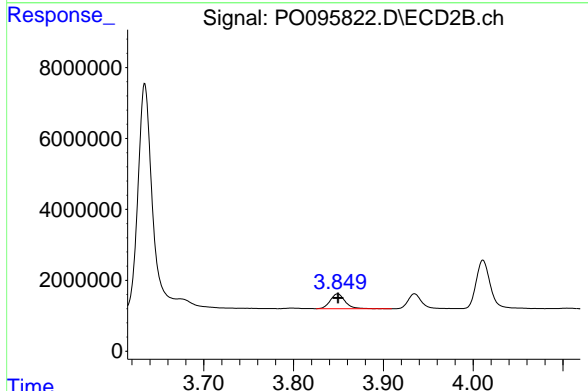
#2 Decachlorobiphenyl

R.T.: 8.670 min
 Delta R.T.: 0.000 min
 Response: 62407537
 Conc: 50.00 ng/ml

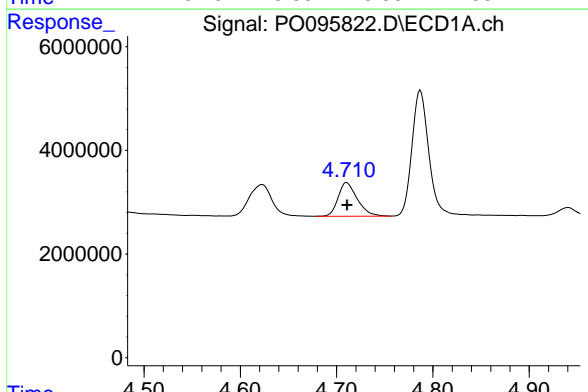


#8 AR-1221-1
 R.T.: 4.623 min
 Delta R.T.: 0.000 min
 Response: 9813608
 Conc: 274.38 ng/ml

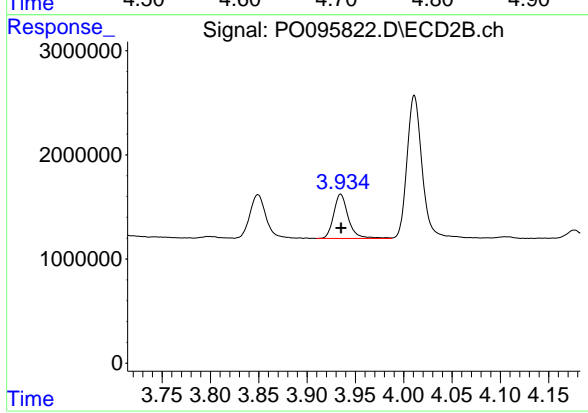
Instrument :
 ECD_O
 ClientSampleId :
 AR1232ICC500



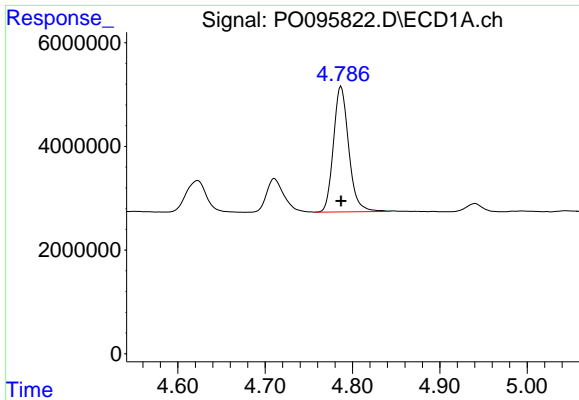
#8 AR-1221-1
 R.T.: 3.849 min
 Delta R.T.: 0.000 min
 Response: 4866216
 Conc: 283.06 ng/ml



#9 AR-1221-2
 R.T.: 4.711 min
 Delta R.T.: 0.000 min
 Response: 8937853
 Conc: 336.04 ng/ml



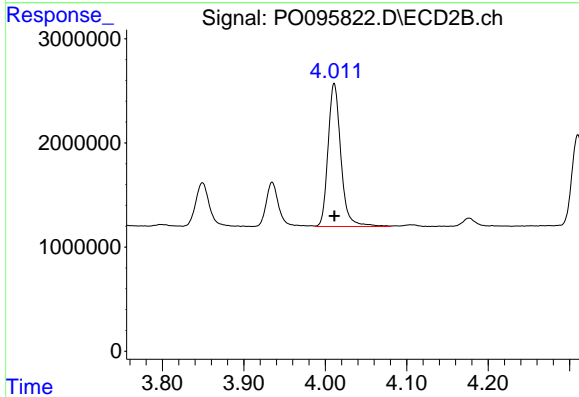
#9 AR-1221-2
 R.T.: 3.935 min
 Delta R.T.: 0.000 min
 Response: 4493086
 Conc: 340.69 ng/ml



#10 AR-1221-3

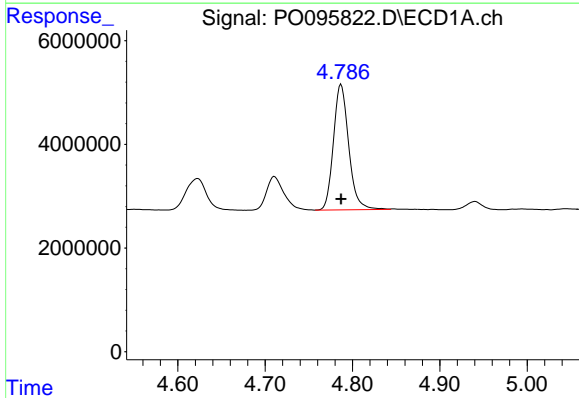
R.T.: 4.787 min
 Delta R.T.: 0.000 min
 Response: 29403090
 Conc: 368.45 ng/ml

Instrument :
 ECD_O
 ClientSampleId :
 AR1232ICC500



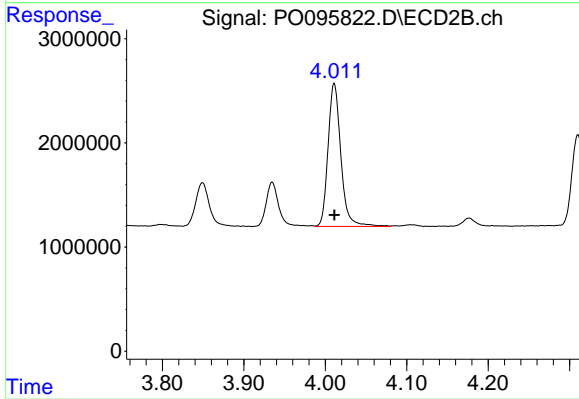
#10 AR-1221-3

R.T.: 4.011 min
 Delta R.T.: 0.000 min
 Response: 15032238
 Conc: 379.09 ng/ml



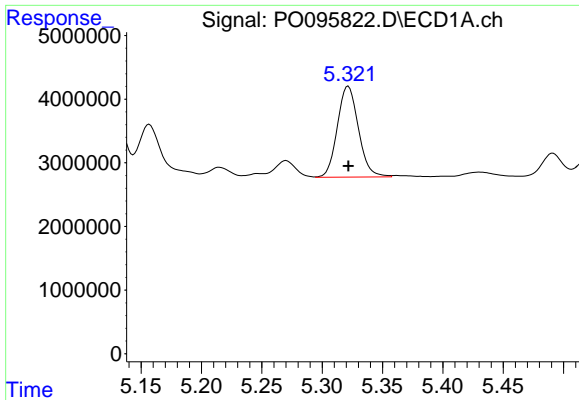
#11 AR-1232-1

R.T.: 4.787 min
 Delta R.T.: 0.000 min
 Response: 29403090
 Conc: 500.00 ng/ml



#11 AR-1232-1

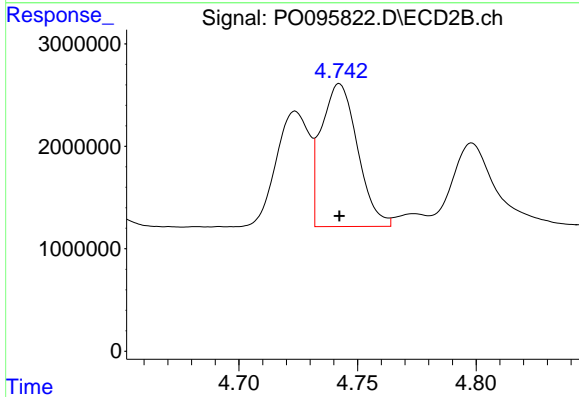
R.T.: 4.011 min
 Delta R.T.: 0.000 min
 Response: 15032238
 Conc: 500.00 ng/ml



#12 AR-1232-2

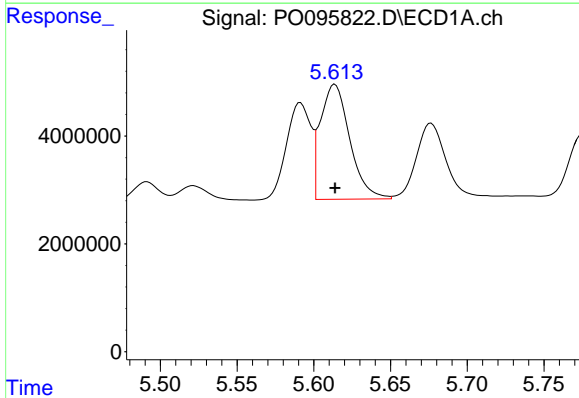
R.T.: 5.322 min
 Delta R.T.: 0.000 min
 Response: 17391922
 Conc: 500.00 ng/ml

Instrument :
 ECD_O
 ClientSampleId :
 AR1232ICC500



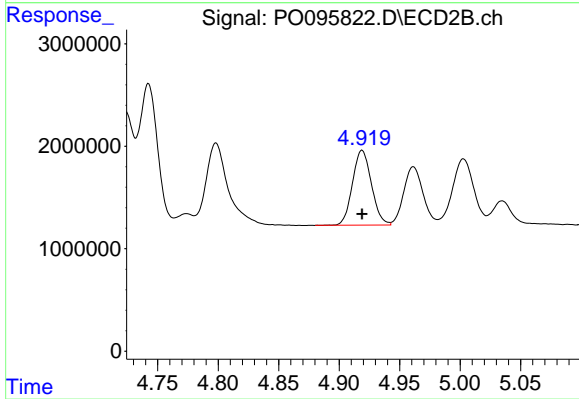
#12 AR-1232-2

R.T.: 4.742 min
 Delta R.T.: 0.000 min
 Response: 14862008
 Conc: 500.00 ng/ml



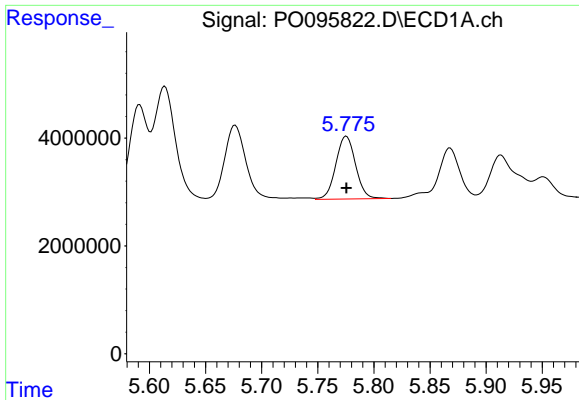
#13 AR-1232-3

R.T.: 5.614 min
 Delta R.T.: 0.000 min
 Response: 28428829
 Conc: 500.00 ng/ml



#13 AR-1232-3

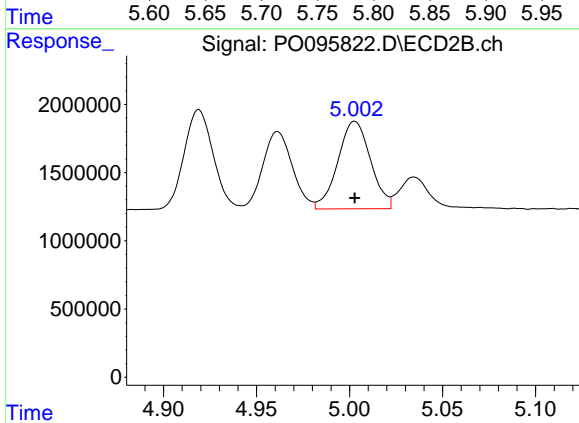
R.T.: 4.919 min
 Delta R.T.: 0.000 min
 Response: 7986341
 Conc: 500.00 ng/ml



#14 AR-1232-4

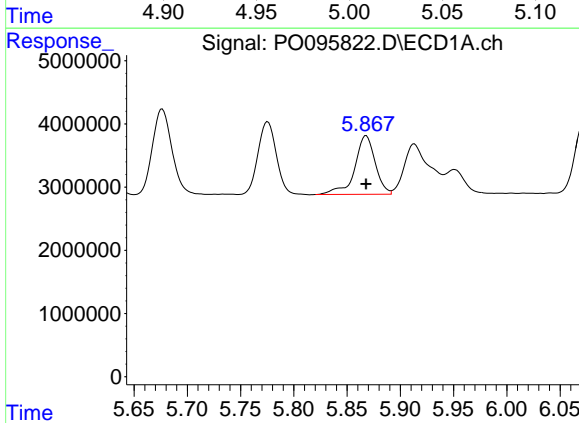
R.T.: 5.775 min
 Delta R.T.: 0.000 min
 Response: 14314926
 Conc: 500.00 ng/ml

Instrument :
 ECD_O
 ClientSampleId :
 AR1232ICC500



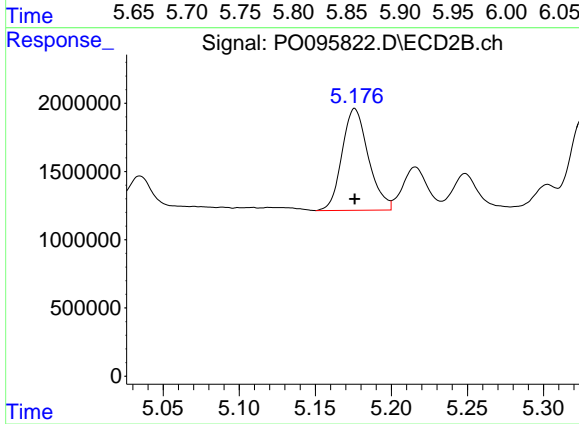
#14 AR-1232-4

R.T.: 5.003 min
 Delta R.T.: 0.000 min
 Response: 7852967
 Conc: 500.00 ng/ml



#15 AR-1232-5

R.T.: 5.868 min
 Delta R.T.: 0.000 min
 Response: 12418841
 Conc: 500.00 ng/ml



#15 AR-1232-5

R.T.: 5.176 min
 Delta R.T.: 0.000 min
 Response: 8997520
 Conc: 500.00 ng/ml