

Data Path : Z:\pestpcbsrv\HPCHEM1\ECD\_0\Data\P0062023\  
 Data File : P0095838.D  
 Signal(s) : Signal #1: ECD1A.ch Signal #2: ECD2B.ch  
 Acq On : 21 Jun 2023 11:24  
 Operator : YP/AJ  
 Sample : AR1262ICC500  
 Misc :  
 ALS Vial : 25 Sample Multiplier: 1

Instrument :  
 ECD\_0  
 ClientSampleId :

Integration File signal 1: autoint1.e  
 Integration File signal 2: autoint2.e  
 Quant Time: Jun 21 12:05:02 2023  
 Quant Method : Z:\pestpcbsrv\HPCHEM1\ECD\_0\methods\P0062023.M  
 Quant Title : GC EXTRACTABLES  
 QLast Update : Wed Jun 21 12:03:30 2023  
 Response via : Initial Calibration  
 Integrator: ChemStation

Volume Inj. : 2 µl  
 Signal #1 Phase : ZB-MR1 Signal #2 Phase: ZB-MR2  
 Signal #1 Info : 30Mx0.32mmx 0.50µ Signal #2 Info : 30M x 0.32mm x 0.25µm

Compound	RT#1	RT#2	Resp#1	Resp#2	ng/ml	ng/ml
-----						
System Monitoring Compounds						
1) SA Tetrachlo...	4.416	3.636	146.4E6	67304232	50.000	50.000
2) SA Decachlor...	10.234	8.672	106.7E6	59950238	50.000	50.000
Target Compounds						
36) L8 AR-1262-1	7.831	6.827	67114489	19124686	500.000	500.000
37) L8 AR-1262-2	8.382	7.034	103.6E6	39420765	500.000	500.000
38) L8 AR-1262-3	8.701	7.562	75679554	30986510	500.000	500.000
39) L8 AR-1262-4	8.790	7.626	60305818	54342491	500.000	500.000
40) L8 AR-1262-5	9.460	8.123	37773379	25395993	500.000	500.000
-----						

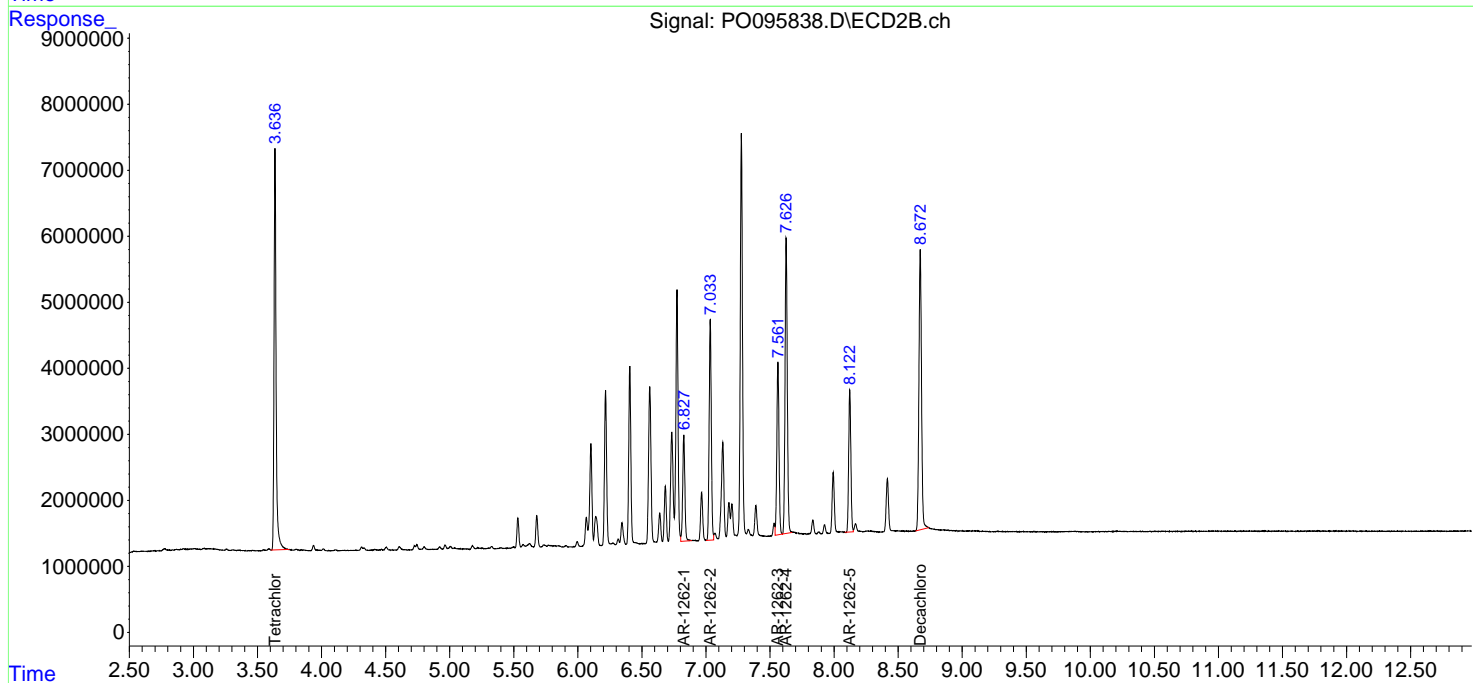
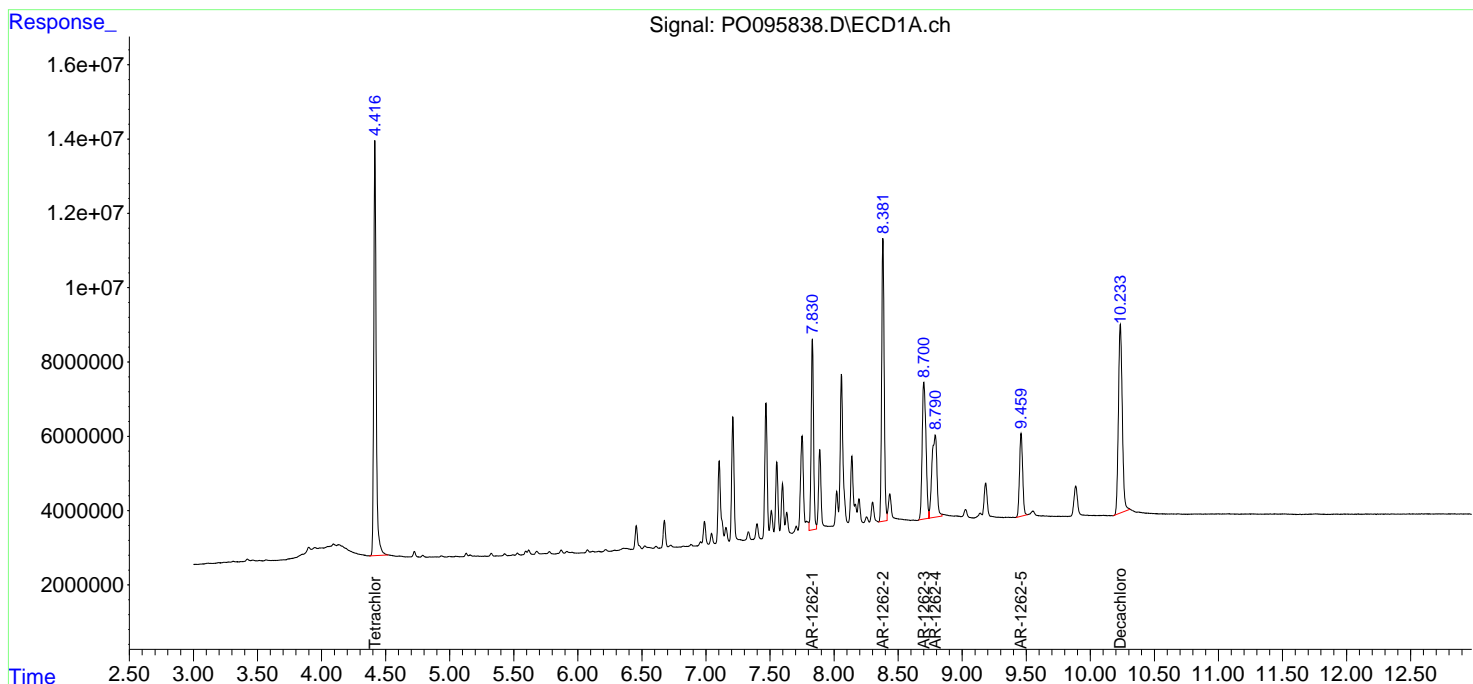
(f)=RT Delta > 1/2 Window (#)=Amounts differ by > 25% (m)=manual int.

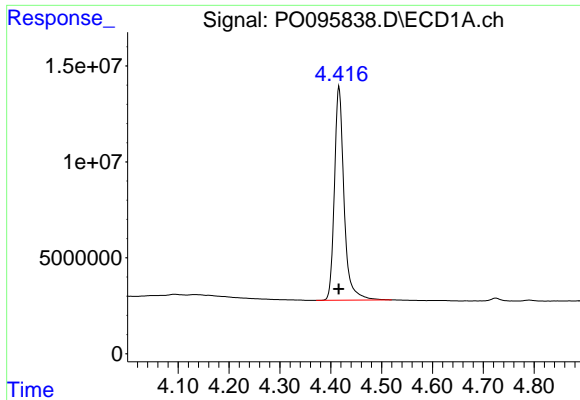
Data Path : Z:\pestpcbsrv\HPCHEM1\ECD\_O\Data\P0062023\  
 Data File : P0095838.D  
 Signal(s) : Signal #1: ECD1A.ch Signal #2: ECD2B.ch  
 Acq On : 21 Jun 2023 11:24  
 Operator : YP/AJ  
 Sample : AR1262ICC500  
 Misc :  
 ALS Vial : 25 Sample Multiplier: 1

Instrument :  
 ECD\_O  
 ClientSampleId :

Integration File signal 1: autoint1.e  
 Integration File signal 2: autoint2.e  
 Quant Time: Jun 21 12:05:02 2023  
 Quant Method : Z:\pestpcbsrv\HPCHEM1\ECD\_O\methods\P0062023.M  
 Quant Title : GC EXTRACTABLES  
 QLast Update : Wed Jun 21 12:03:30 2023  
 Response via : Initial Calibration  
 Integrator: ChemStation

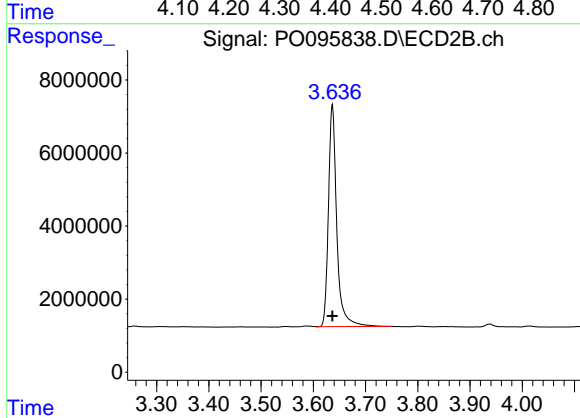
Volume Inj. : 2 µl  
 Signal #1 Phase : ZB-MR1 Signal #2 Phase: ZB-MR2  
 Signal #1 Info : 30Mx0.32mmx 0.50µ Signal #2 Info : 30M x 0.32mm x 0.25µm



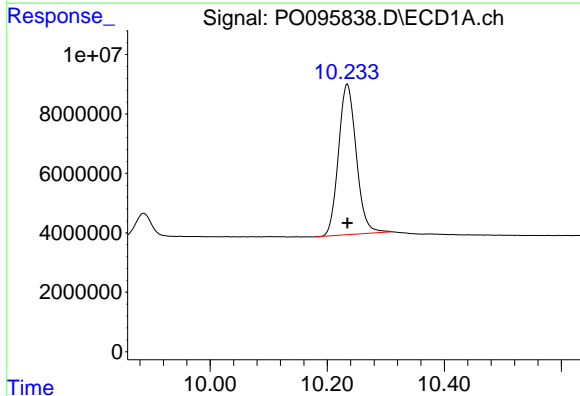


#1 Tetrachloro-m-xylene  
 R.T.: 4.416 min  
 Delta R.T.: 0.000 min  
 Response: 146396361  
 Conc: 50.00 ng/ml

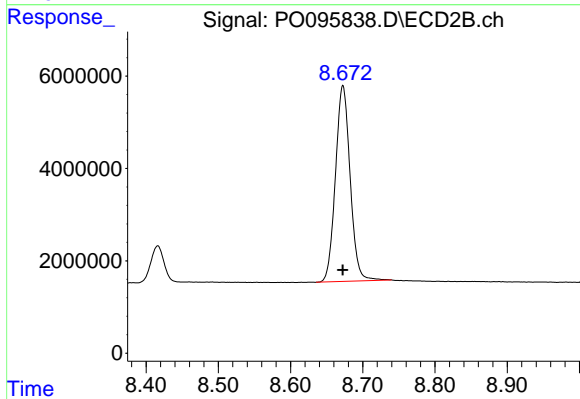
Instrument :  
 ECD\_O  
 ClientSampleId :



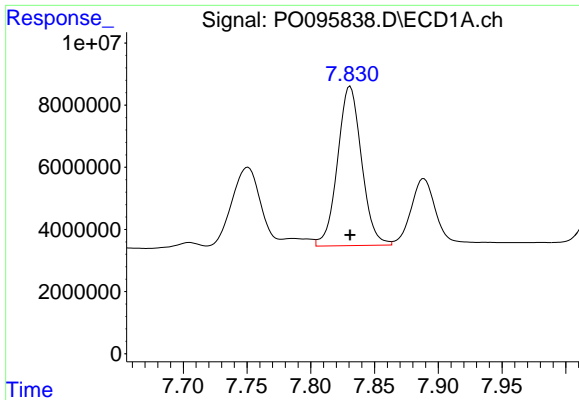
#1 Tetrachloro-m-xylene  
 R.T.: 3.636 min  
 Delta R.T.: 0.000 min  
 Response: 67304232  
 Conc: 50.00 ng/ml



#2 Decachlorobiphenyl  
 R.T.: 10.234 min  
 Delta R.T.: 0.000 min  
 Response: 106729186  
 Conc: 50.00 ng/ml



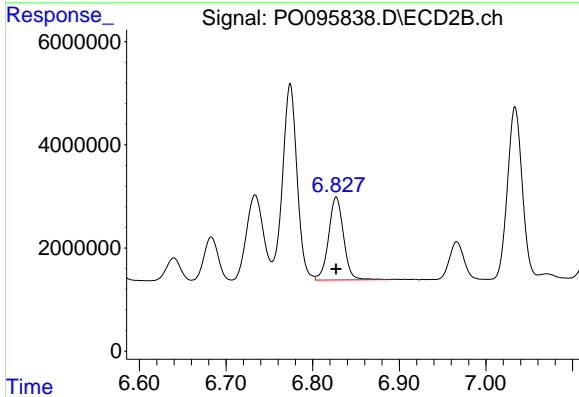
#2 Decachlorobiphenyl  
 R.T.: 8.672 min  
 Delta R.T.: 0.000 min  
 Response: 59950238  
 Conc: 50.00 ng/ml



#36 AR-1262-1

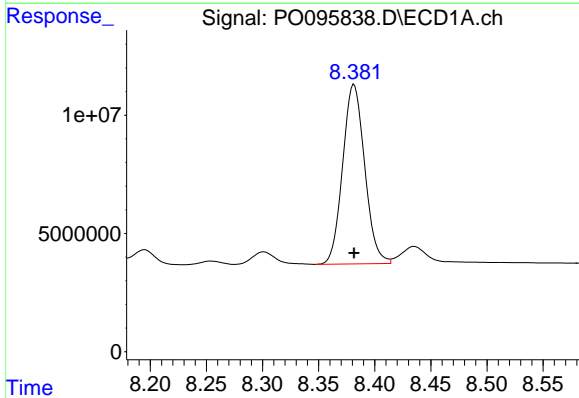
R.T.: 7.831 min  
 Delta R.T.: 0.000 min  
 Response: 67114489  
 Conc: 500.00 ng/ml

Instrument :  
 ECD\_O  
 ClientSampleId :



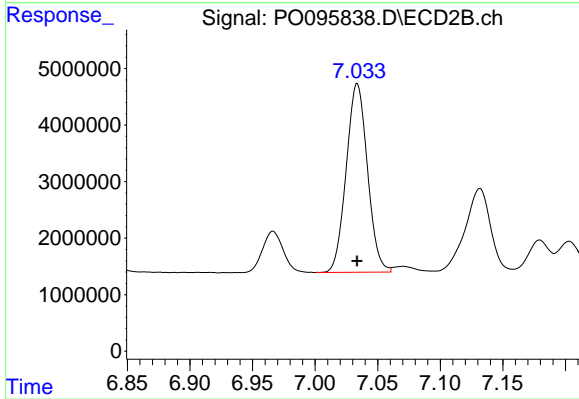
#36 AR-1262-1

R.T.: 6.827 min  
 Delta R.T.: 0.000 min  
 Response: 19124686  
 Conc: 500.00 ng/ml



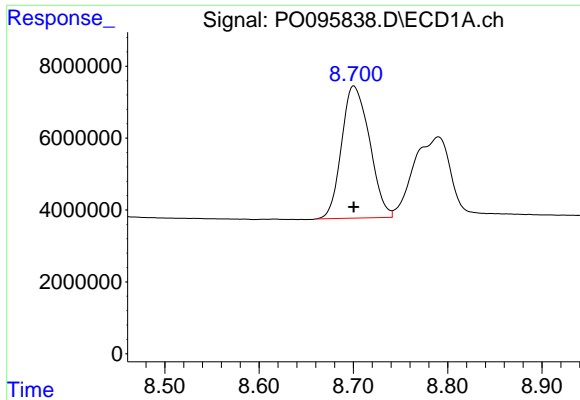
#37 AR-1262-2

R.T.: 8.382 min  
 Delta R.T.: 0.000 min  
 Response: 103594239  
 Conc: 500.00 ng/ml



#37 AR-1262-2

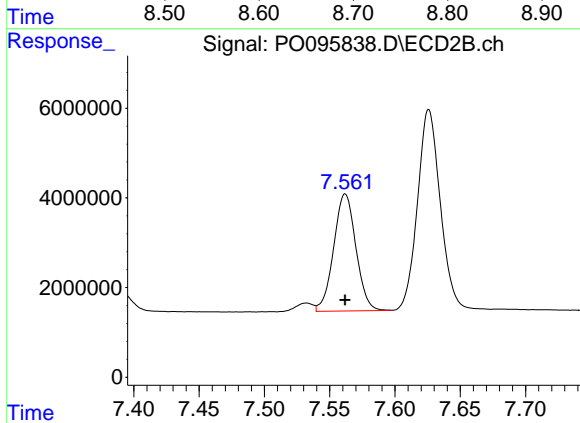
R.T.: 7.034 min  
 Delta R.T.: 0.000 min  
 Response: 39420765  
 Conc: 500.00 ng/ml



#38 AR-1262-3

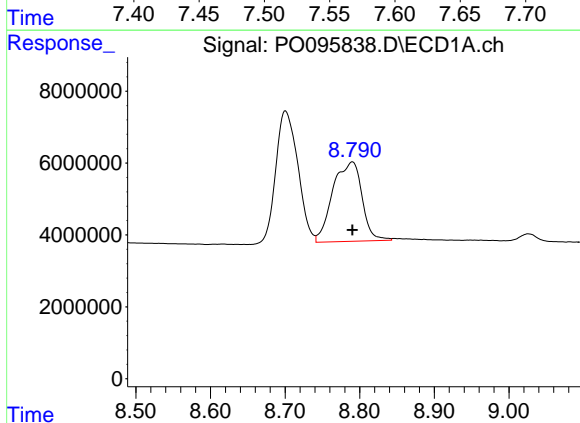
R.T.: 8.701 min  
 Delta R.T.: 0.000 min  
 Response: 75679554  
 Conc: 500.00 ng/ml

Instrument :  
 ECD\_O  
 ClientSampleId :



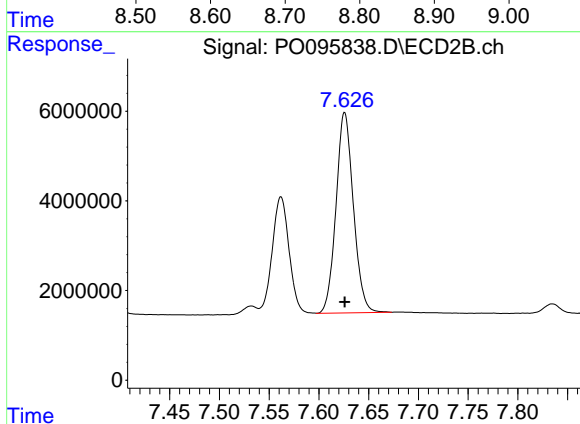
#38 AR-1262-3

R.T.: 7.562 min  
 Delta R.T.: 0.000 min  
 Response: 30986510  
 Conc: 500.00 ng/ml



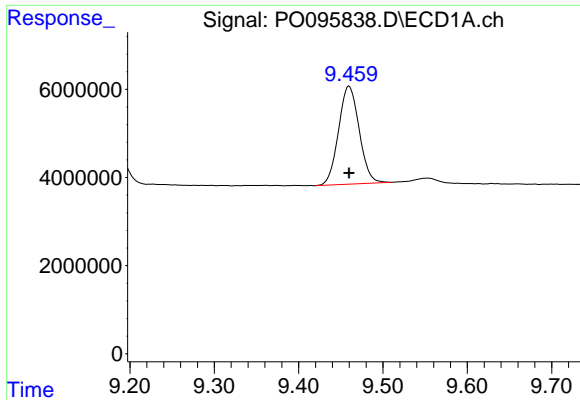
#39 AR-1262-4

R.T.: 8.790 min  
 Delta R.T.: 0.000 min  
 Response: 60305818  
 Conc: 500.00 ng/ml



#39 AR-1262-4

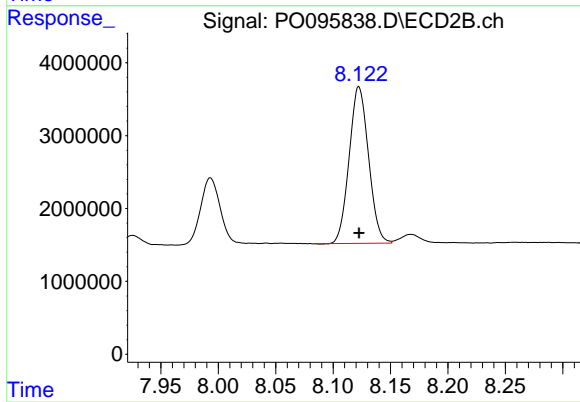
R.T.: 7.626 min  
 Delta R.T.: 0.000 min  
 Response: 54342491  
 Conc: 500.00 ng/ml



#40 AR-1262-5

R.T.: 9.460 min  
Delta R.T.: 0.000 min  
Response: 37773379  
Conc: 500.00 ng/ml

Instrument :  
ECD\_O  
ClientSampleId :



#40 AR-1262-5

R.T.: 8.123 min  
Delta R.T.: 0.000 min  
Response: 25395993  
Conc: 500.00 ng/ml