

Data Path : Z:\pestpcbsrv\HPCHEM1\ECD_O\Data\P0062024\
 Data File : P0104368.D
 Signal(s) : Signal #1: ECD1A.ch Signal #2: ECD2B.ch
 Acq On : 20 Jun 2024 14:39
 Operator : YP/AJ
 Sample : AR1660ICC750
 Misc :
 ALS Vial : 4 Sample Multiplier: 1

Instrument :
 ECD_O
ClientSampleId :
 AR1660ICC750

Integration File signal 1: autoint1.e
 Integration File signal 2: autoint2.e
 Quant Time: Jun 20 15:24:02 2024
 Quant Method : Z:\pestpcbsrv\HPCHEM1\ECD_O\methods\P0062024.M
 Quant Title : GC EXTRACTABLES
 QLast Update : Thu Jun 20 15:16:44 2024
 Response via : Initial Calibration
 Integrator: ChemStation

Volume Inj. : 2 µl
 Signal #1 Phase : ZB-MR1 Signal #2 Phase: ZB-MR2
 Signal #1 Info : 30Mx0.32mmx 0.50µ Signal #2 Info : 30M x 0.32mm x 0.25µm

Compound	RT#1	RT#2	Resp#1	Resp#2	ng/ml	ng/ml

System Monitoring Compounds						
1) SA Tetrachlo...	4.405	3.548	605.6E6	115.6E6	75.180	75.280
2) SA Decachlor...	10.101	8.462	409.5E6	236.5E6	74.801	74.774
Target Compounds						
3) L1 AR-1016-1	5.564	4.606	198.2E6	31953210	748.093	749.849
4) L1 AR-1016-2	5.587	4.624	277.4E6	54497031	750.317	753.515
5) L1 AR-1016-3	5.649	4.796	172.5E6	31036007	747.598	752.110
6) L1 AR-1016-4	5.747	4.838	141.9E6	17163389	750.244	749.836
7) L1 AR-1016-5	6.040	5.047	139.0E6	27204004	749.853	756.637
31) L7 AR-1260-1	7.162	6.066	248.1E6	51044922	749.784	749.845
32) L7 AR-1260-2	7.418	6.253	288.9E6	68478956	750.498	748.601
33) L7 AR-1260-3	7.776	6.403	216.5E6	66181510	751.078	750.671
34) L7 AR-1260-4	8.002	6.871	236.7E6	60596199	746.515	749.143
35) L7 AR-1260-5	8.316	7.112	465.4E6	211.9E6	750.882	749.443

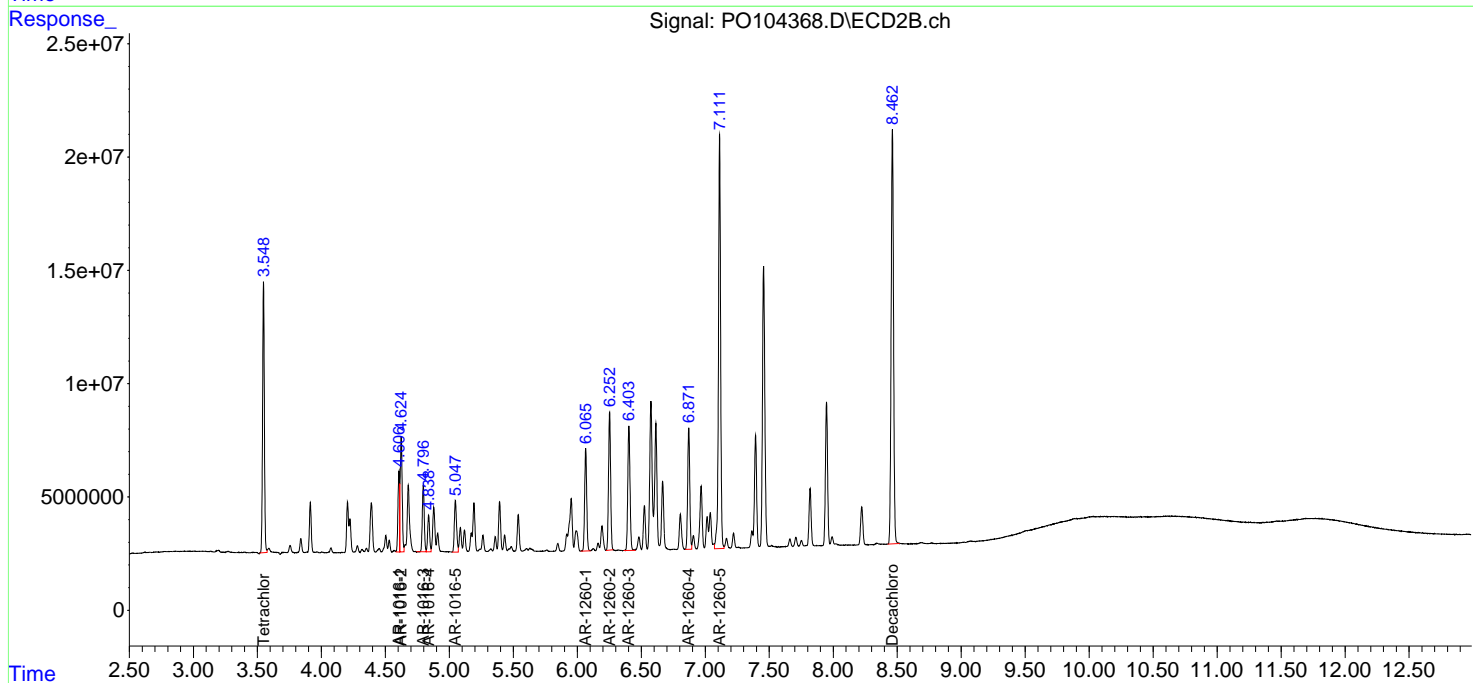
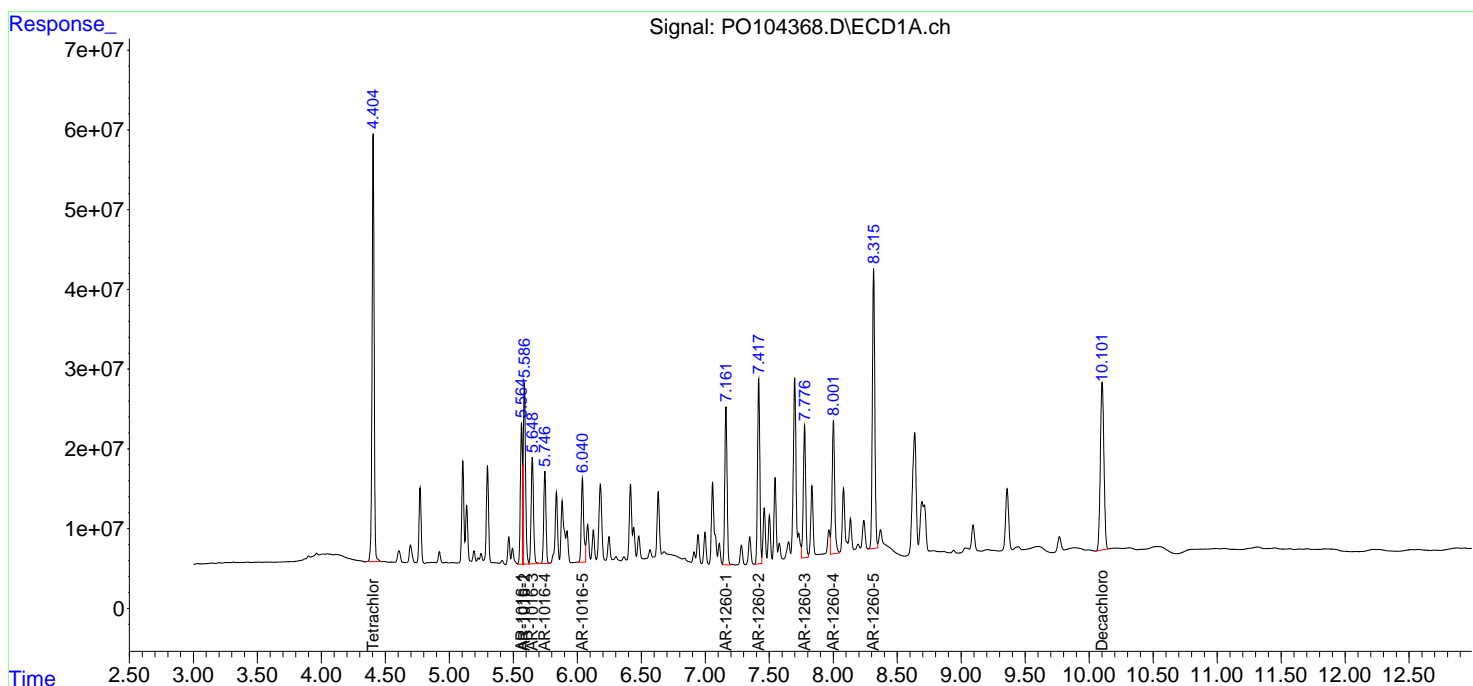
(f)=RT Delta > 1/2 Window (#)=Amounts differ by > 25% (m)=manual int.

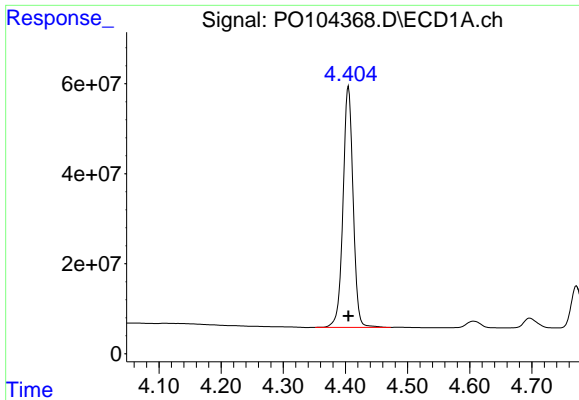
Data Path : Z:\pestpcbsrv\HPCHEM1\ECD_O\Data\PO062024\
 Data File : PO104368.D
 Signal(s) : Signal #1: ECD1A.ch Signal #2: ECD2B.ch
 Acq On : 20 Jun 2024 14:39
 Operator : YP/AJ
 Sample : AR1660ICC750
 Misc :
 ALS Vial : 4 Sample Multiplier: 1

Instrument :
 ECD_O
 ClientSampleId :
 AR1660ICC750

Integration File signal 1: autoint1.e
 Integration File signal 2: autoint2.e
 Quant Time: Jun 20 15:24:02 2024
 Quant Method : Z:\pestpcbsrv\HPCHEM1\ECD_O\methods\PO062024.M
 Quant Title : GC EXTRACTABLES
 QLast Update : Thu Jun 20 15:16:44 2024
 Response via : Initial Calibration
 Integrator: ChemStation

Volume Inj. : 2 µl
 Signal #1 Phase : ZB-MR1 Signal #2 Phase: ZB-MR2
 Signal #1 Info : 30Mx0.32mmx 0.50µ Signal #2 Info : 30M x 0.32mm x 0.25µm

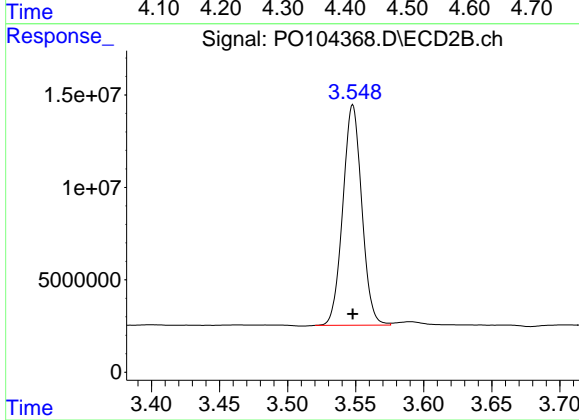




#1 Tetrachloro-m-xylene

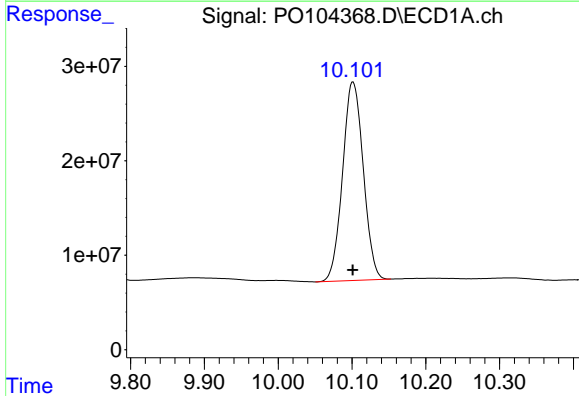
R.T.: 4.405 min
Delta R.T.: 0.000 min
Response: 605565101
Conc: 75.18 ng/ml

Instrument :
ECD_O
ClientSampleId :
AR1660ICC750



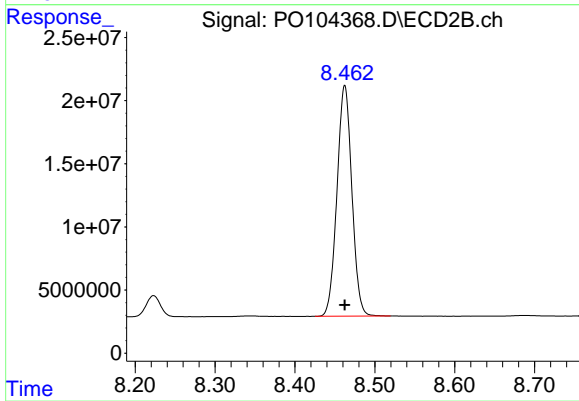
#1 Tetrachloro-m-xylene

R.T.: 3.548 min
Delta R.T.: 0.000 min
Response: 115642390
Conc: 75.28 ng/ml



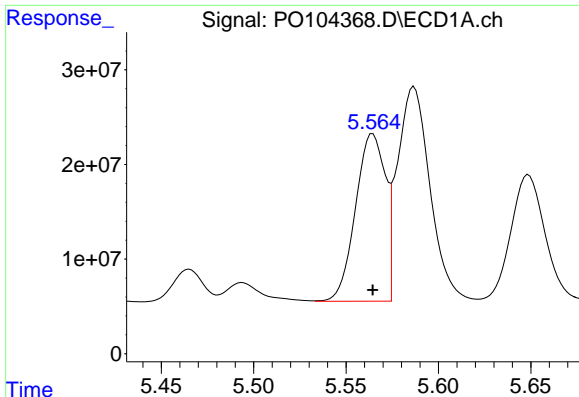
#2 Decachlorobiphenyl

R.T.: 10.101 min
Delta R.T.: 0.000 min
Response: 409461333
Conc: 74.80 ng/ml



#2 Decachlorobiphenyl

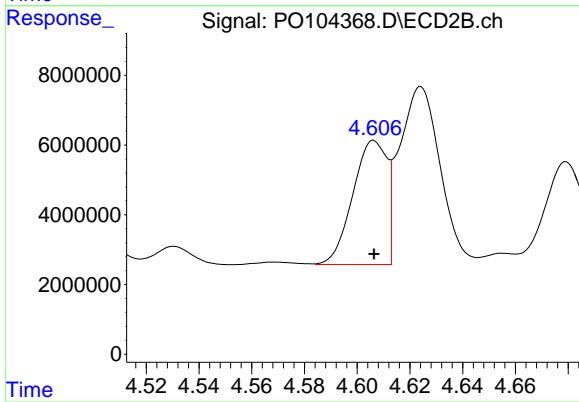
R.T.: 8.462 min
Delta R.T.: 0.000 min
Response: 236511728
Conc: 74.77 ng/ml



#3 AR-1016-1

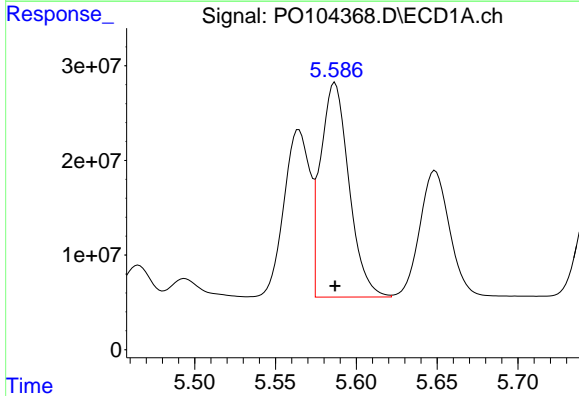
R.T.: 5.564 min
 Delta R.T.: 0.000 min
 Response: 198226479
 Conc: 748.09 ng/ml

Instrument :
 ECD_O
 ClientSampleId :
 AR1660ICC750



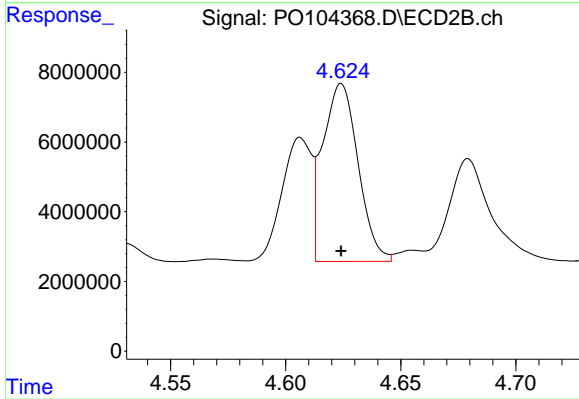
#3 AR-1016-1

R.T.: 4.606 min
 Delta R.T.: 0.000 min
 Response: 31953210
 Conc: 749.85 ng/ml



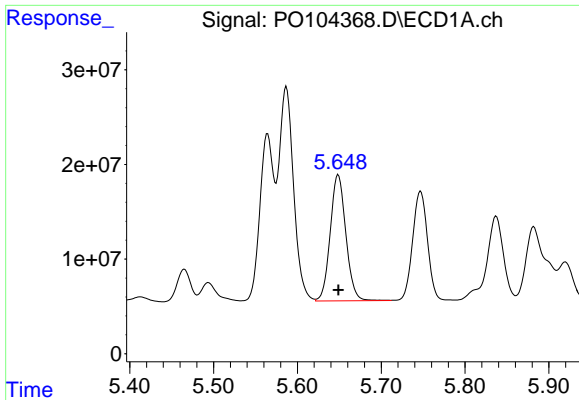
#4 AR-1016-2

R.T.: 5.587 min
 Delta R.T.: 0.000 min
 Response: 277448133
 Conc: 750.32 ng/ml



#4 AR-1016-2

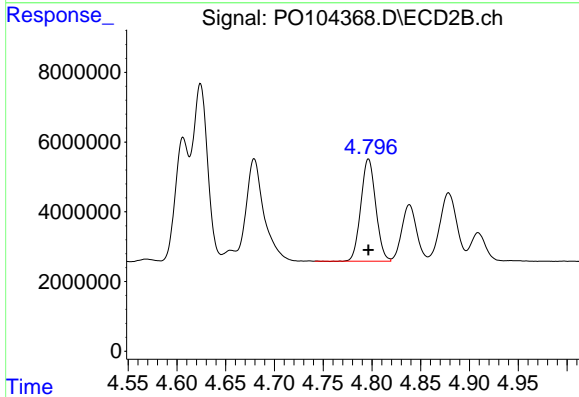
R.T.: 4.624 min
 Delta R.T.: 0.000 min
 Response: 54497031
 Conc: 753.51 ng/ml



#5 AR-1016-3

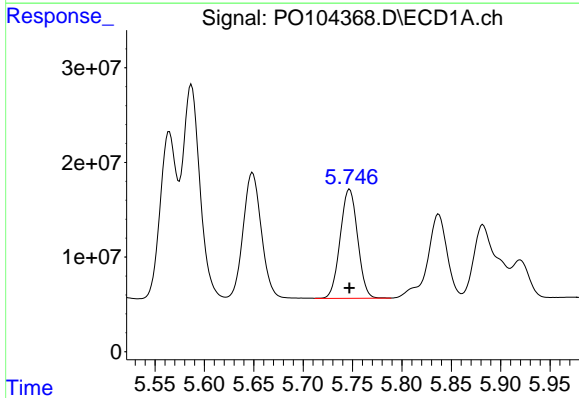
R.T.: 5.649 min
 Delta R.T.: 0.000 min
 Response: 172515513
 Conc: 747.60 ng/ml

Instrument :
 ECD_O
 ClientSampleId :
 AR1660ICC750



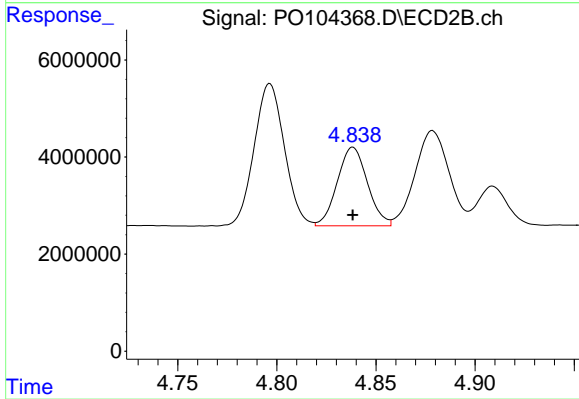
#5 AR-1016-3

R.T.: 4.796 min
 Delta R.T.: 0.000 min
 Response: 31036007
 Conc: 752.11 ng/ml



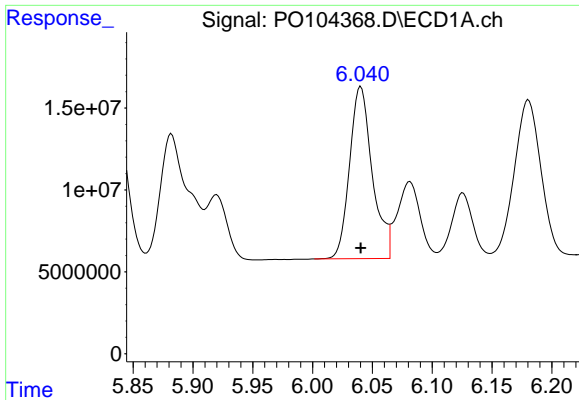
#6 AR-1016-4

R.T.: 5.747 min
 Delta R.T.: 0.000 min
 Response: 141930964
 Conc: 750.24 ng/ml



#6 AR-1016-4

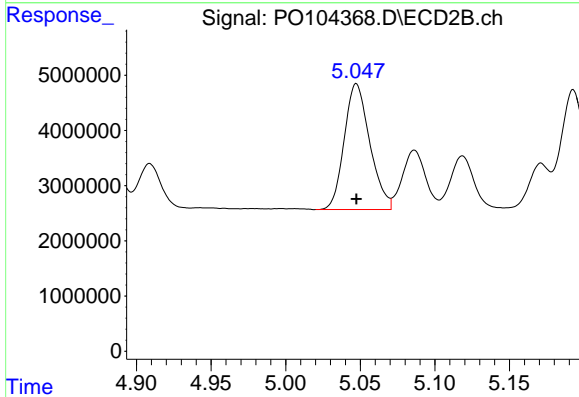
R.T.: 4.838 min
 Delta R.T.: 0.000 min
 Response: 17163389
 Conc: 749.84 ng/ml



#7 AR-1016-5

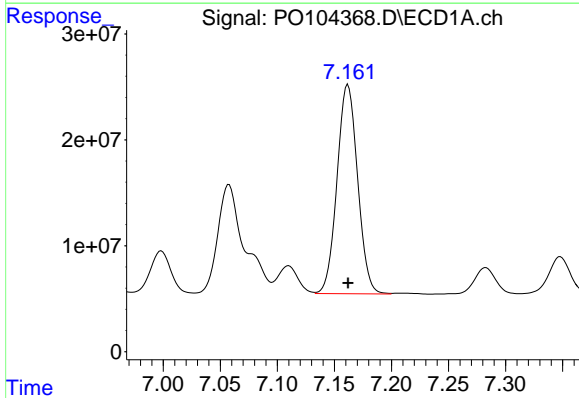
R.T.: 6.040 min
 Delta R.T.: 0.000 min
 Response: 138968280
 Conc: 749.85 ng/ml

Instrument :
 ECD_O
 ClientSampleId :
 AR1660ICC750



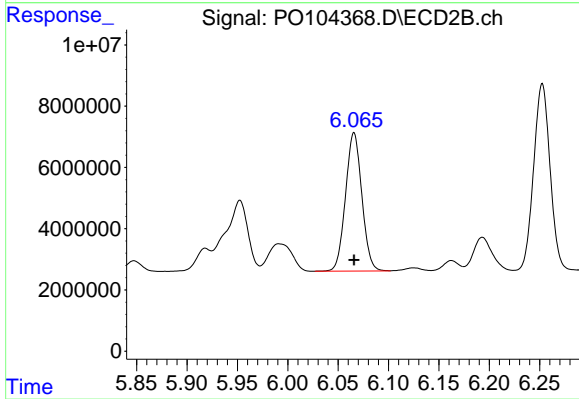
#7 AR-1016-5

R.T.: 5.047 min
 Delta R.T.: 0.000 min
 Response: 27204004
 Conc: 756.64 ng/ml



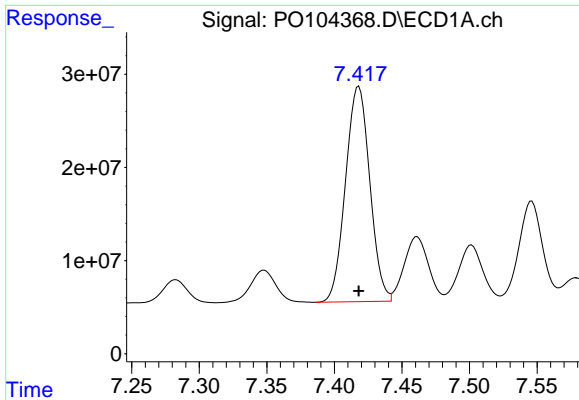
#31 AR-1260-1

R.T.: 7.162 min
 Delta R.T.: 0.000 min
 Response: 248099766
 Conc: 749.78 ng/ml



#31 AR-1260-1

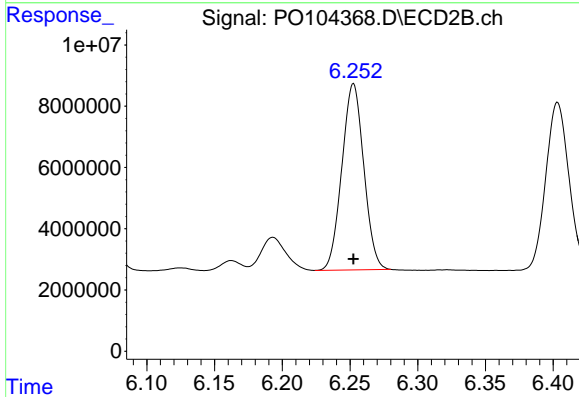
R.T.: 6.066 min
 Delta R.T.: 0.000 min
 Response: 51044922
 Conc: 749.85 ng/ml



#32 AR-1260-2

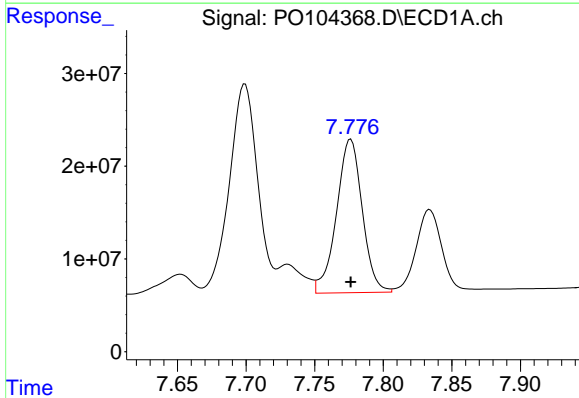
R.T.: 7.418 min
 Delta R.T.: 0.000 min
 Response: 288852121
 Conc: 750.50 ng/ml

Instrument :
 ECD_O
 ClientSampleId :
 AR1660ICC750



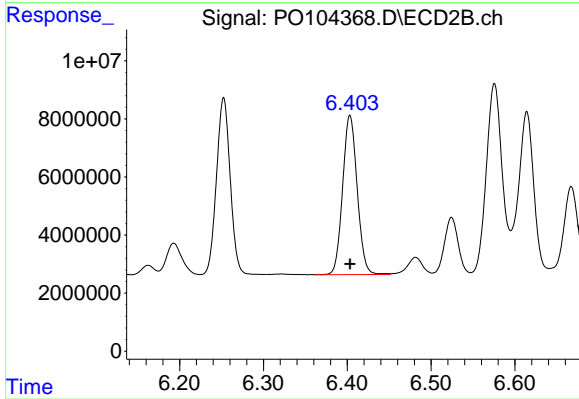
#32 AR-1260-2

R.T.: 6.253 min
 Delta R.T.: 0.000 min
 Response: 68478956
 Conc: 748.60 ng/ml



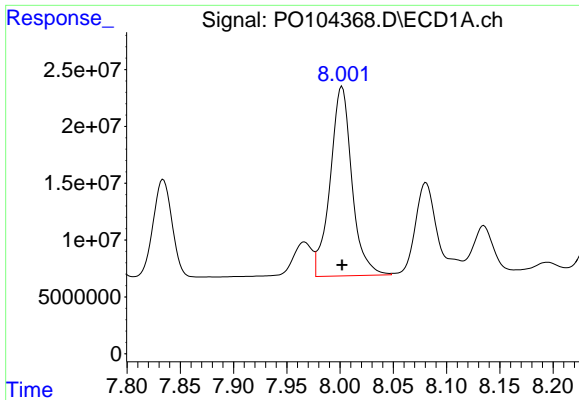
#33 AR-1260-3

R.T.: 7.776 min
 Delta R.T.: 0.000 min
 Response: 216484377
 Conc: 751.08 ng/ml



#33 AR-1260-3

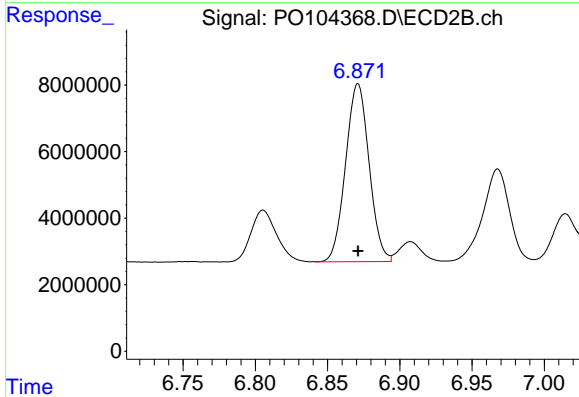
R.T.: 6.403 min
 Delta R.T.: 0.000 min
 Response: 66181510
 Conc: 750.67 ng/ml



#34 AR-1260-4

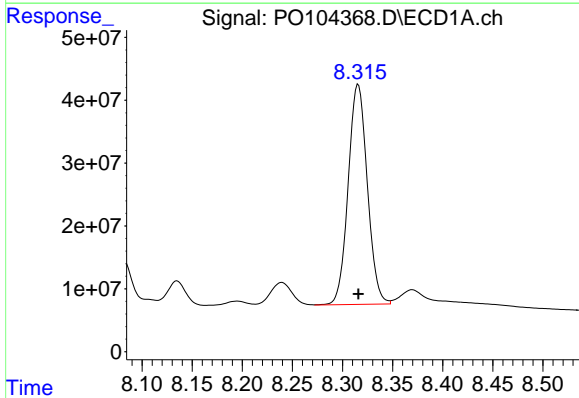
R.T.: 8.002 min
 Delta R.T.: 0.000 min
 Response: 236692310
 Conc: 746.52 ng/ml

Instrument :
 ECD_O
 ClientSampleId :
 AR1660ICC750



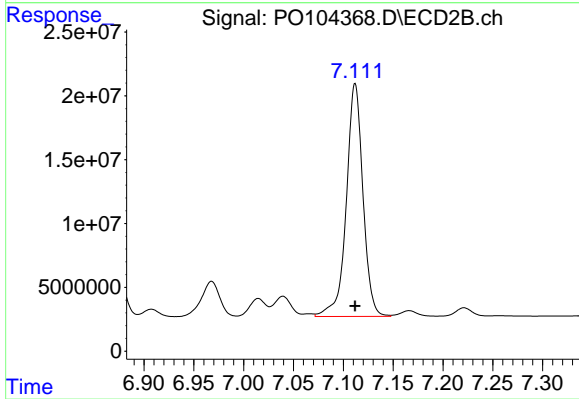
#34 AR-1260-4

R.T.: 6.871 min
 Delta R.T.: 0.000 min
 Response: 60596199
 Conc: 749.14 ng/ml



#35 AR-1260-5

R.T.: 8.316 min
 Delta R.T.: 0.000 min
 Response: 465435832
 Conc: 750.88 ng/ml



#35 AR-1260-5

R.T.: 7.112 min
 Delta R.T.: 0.000 min
 Response: 211931553
 Conc: 749.44 ng/ml