

Data Path : Z:\pestpcbsrv\HPCHEM1\ECD_O\Data\P0062024\
 Data File : P0104367.D
 Signal(s) : Signal #1: ECD1A.ch Signal #2: ECD2B.ch
 Acq On : 20 Jun 2024 14:23
 Operator : YP/AJ
 Sample : AR1660ICC1000
 Misc :
 ALS Vial : 3 Sample Multiplier: 1

Instrument :
 ECD_O
 ClientSampleId :
 AR1660ICC1000

Integration File signal 1: autoint1.e
 Integration File signal 2: autoint2.e
 Quant Time: Jun 20 15:20:20 2024
 Quant Method : Z:\pestpcbsrv\HPCHEM1\ECD_O\methods\P0062024.M
 Quant Title : GC EXTRACTABLES
 QLast Update : Thu Jun 20 15:16:44 2024
 Response via : Initial Calibration
 Integrator: ChemStation

Volume Inj. : 2 µl
 Signal #1 Phase : ZB-MR1 Signal #2 Phase: ZB-MR2
 Signal #1 Info : 30Mx0.32mmx 0.50µ Signal #2 Info : 30M x 0.32mm x 0.25µm

Compound	RT#1	RT#2	Resp#1	Resp#2	ng/ml	ng/ml

System Monitoring Compounds						
1) SA Tetrachlo...	4.405	3.547	788.3E6	151.3E6	97.985	98.693
2) SA Decachlor...	10.103	8.463	533.6E6	307.3E6	97.347	97.021
Target Compounds						
3) L1 AR-1016-1	5.565	4.606	255.1E6	40891856	961.643	959.517
4) L1 AR-1016-2	5.587	4.624	356.6E6	69696482	964.621	965.936
5) L1 AR-1016-3	5.649	4.796	220.3E6	40152359	953.110	974.402
6) L1 AR-1016-4	5.747	4.838	181.5E6	21896937	959.789	956.532
7) L1 AR-1016-5	6.040	5.047	177.9E6	34063318	960.071	951.629
31) L7 AR-1260-1	7.162	6.066	318.4E6	65322575	962.163	959.484
32) L7 AR-1260-2	7.417	6.252	371.8E6	87676982	966.446	957.577
33) L7 AR-1260-3	7.776	6.403	277.3E6	84981278	962.849	964.340
34) L7 AR-1260-4	8.000	6.871	305.5E6	78176015	961.355	965.929
35) L7 AR-1260-5	8.315	7.112	605.0E6	277.1E6	976.652	979.455

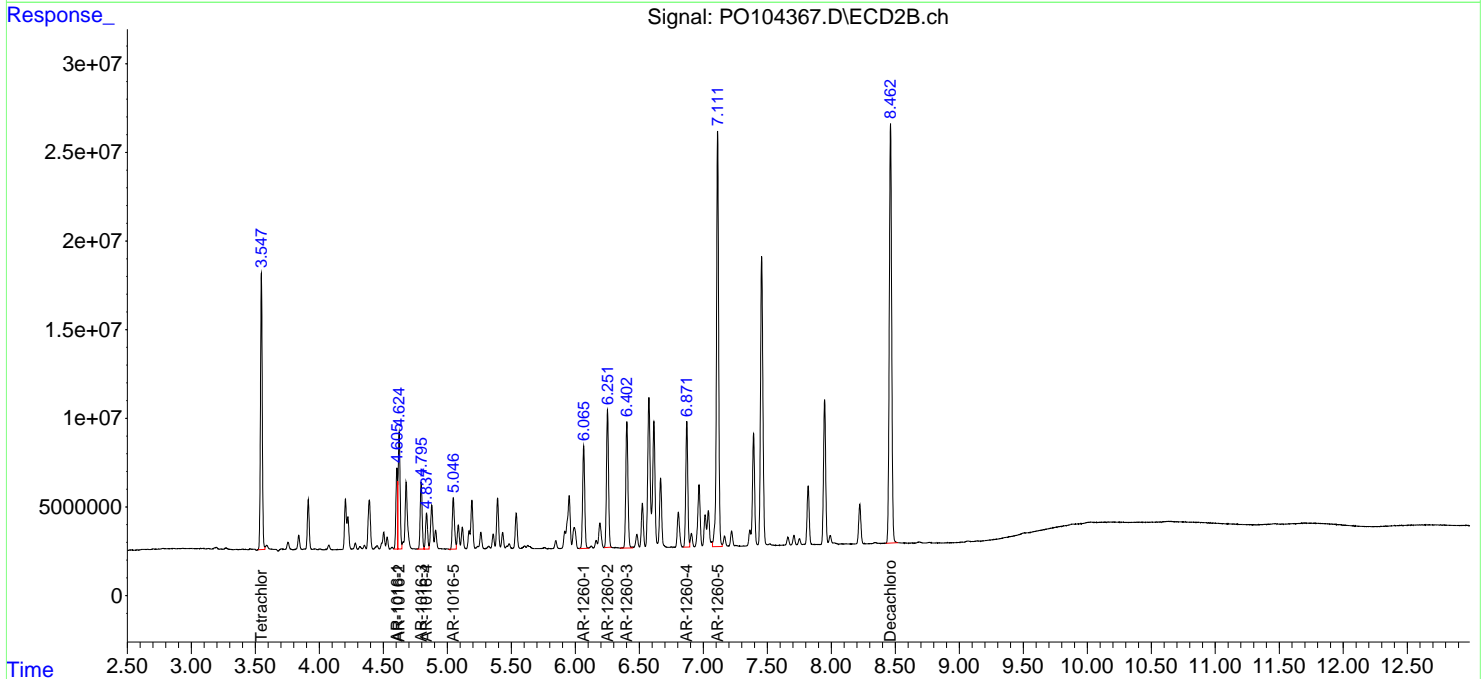
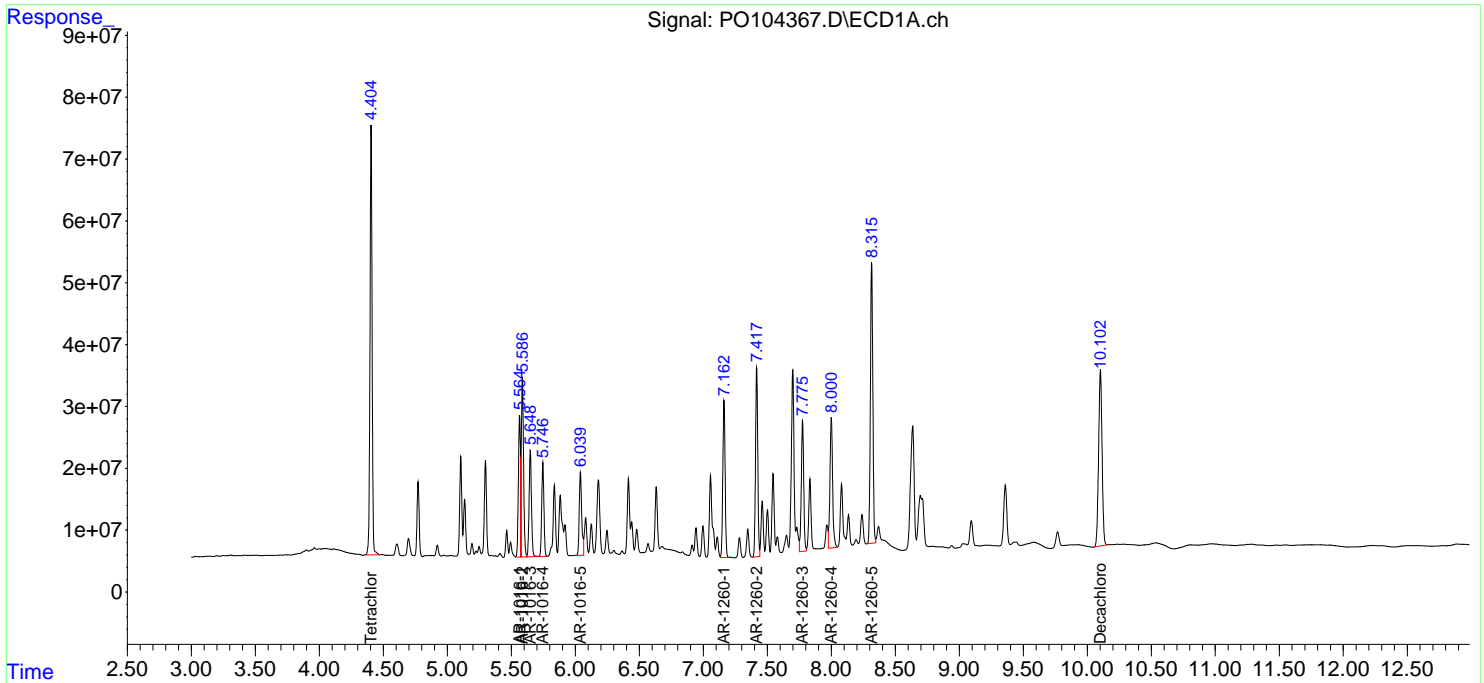
(f)=RT Delta > 1/2 Window (#)=Amounts differ by > 25% (m)=manual int.

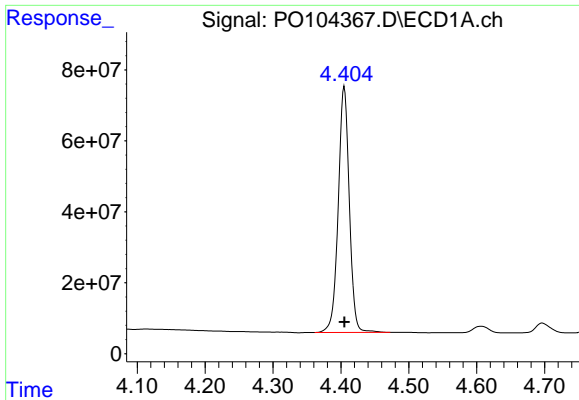
Data Path : Z:\pestpcbsrv\HPCHEM1\ECD_O\Data\P0062024\
 Data File : P0104367.D
 Signal(s) : Signal #1: ECD1A.ch Signal #2: ECD2B.ch
 Acq On : 20 Jun 2024 14:23
 Operator : YP/AJ
 Sample : AR1660ICC1000
 Misc :
 ALS Vial : 3 Sample Multiplier: 1

Instrument :
 ECD_O
ClientSampleId :
 AR1660ICC1000

Integration File signal 1: autoint1.e
 Integration File signal 2: autoint2.e
 Quant Time: Jun 20 15:20:20 2024
 Quant Method : Z:\pestpcbsrv\HPCHEM1\ECD_O\methods\P0062024.M
 Quant Title : GC EXTRACTABLES
 QLast Update : Thu Jun 20 15:16:44 2024
 Response via : Initial Calibration
 Integrator: ChemStation

Volume Inj. : 2 µl
 Signal #1 Phase : ZB-MR1 Signal #2 Phase: ZB-MR2
 Signal #1 Info : 30Mx0.32mmx 0.50µ Signal #2 Info : 30M x 0.32mm x 0.25µm

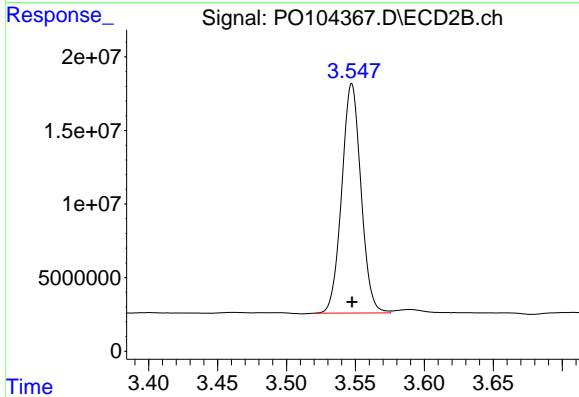




#1 Tetrachloro-m-xylene

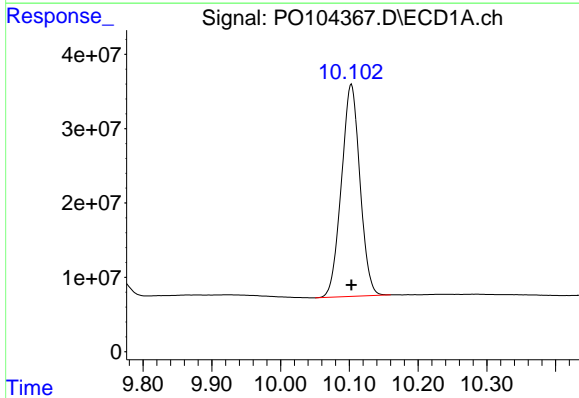
R.T.: 4.405 min
 Delta R.T.: 0.000 min
 Response: 788313624
 Conc: 97.98 ng/ml

Instrument :
 ECD_O
 ClientSampleId :
 AR1660ICC1000



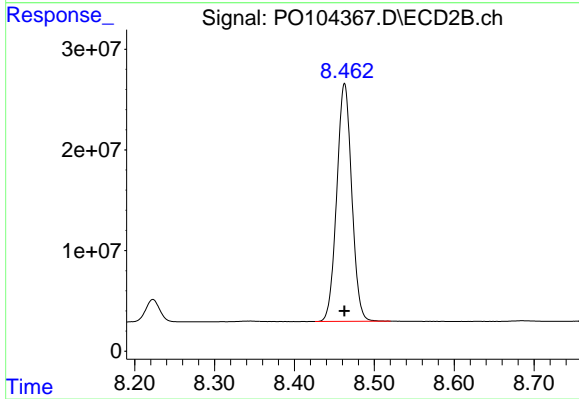
#1 Tetrachloro-m-xylene

R.T.: 3.547 min
 Delta R.T.: 0.000 min
 Response: 151324335
 Conc: 98.69 ng/ml



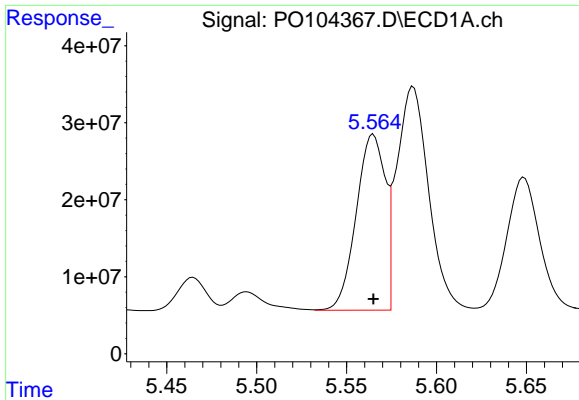
#2 Decachlorobiphenyl

R.T.: 10.103 min
 Delta R.T.: 0.000 min
 Response: 533590227
 Conc: 97.35 ng/ml



#2 Decachlorobiphenyl

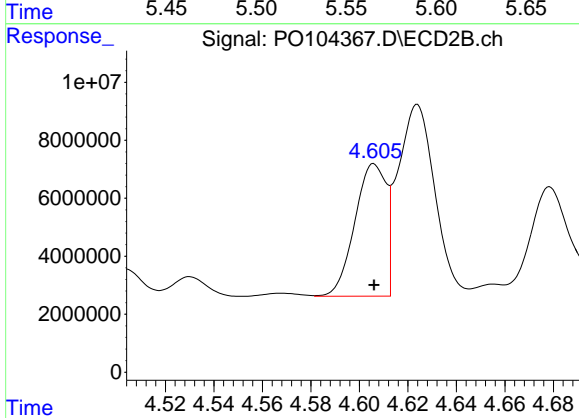
R.T.: 8.463 min
 Delta R.T.: 0.000 min
 Response: 307339339
 Conc: 97.02 ng/ml



#3 AR-1016-1

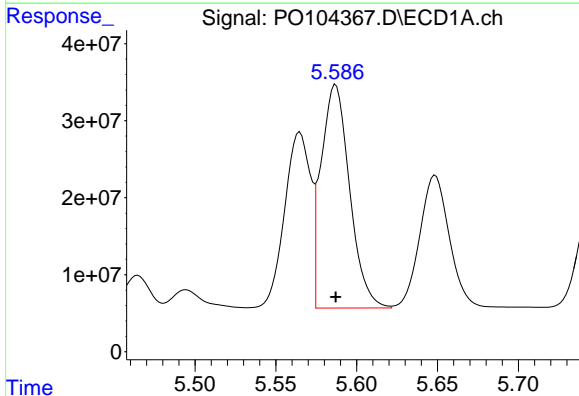
R.T.: 5.565 min
 Delta R.T.: 0.000 min
 Response: 255135926
 Conc: 961.64 ng/ml

Instrument :
 ECD_O
 ClientSampleId :
 AR1660ICC1000



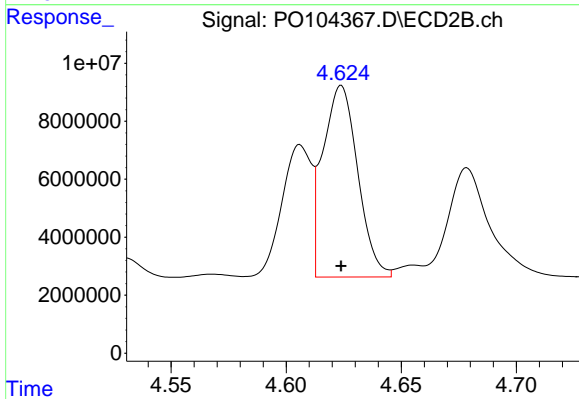
#3 AR-1016-1

R.T.: 4.606 min
 Delta R.T.: 0.000 min
 Response: 40891856
 Conc: 959.52 ng/ml



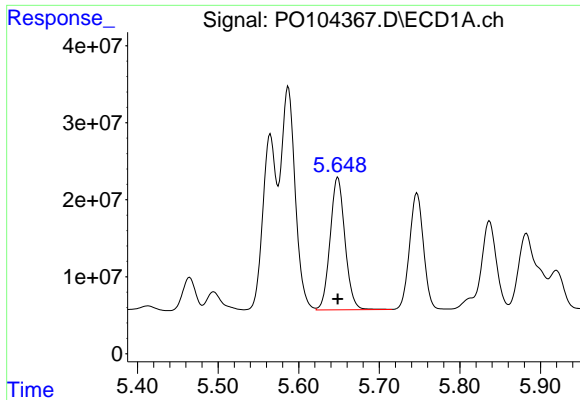
#4 AR-1016-2

R.T.: 5.587 min
 Delta R.T.: 0.000 min
 Response: 356617168
 Conc: 964.62 ng/ml



#4 AR-1016-2

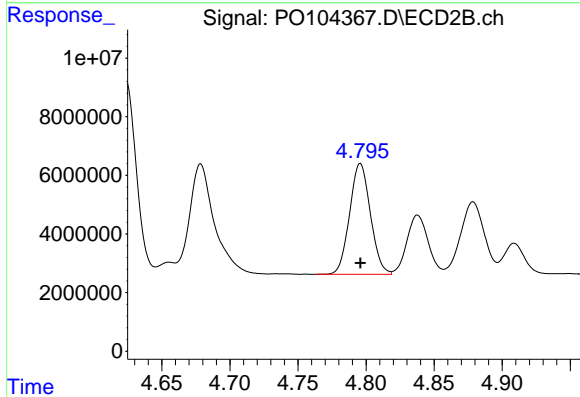
R.T.: 4.624 min
 Delta R.T.: 0.000 min
 Response: 69696482
 Conc: 965.94 ng/ml



#5 AR-1016-3

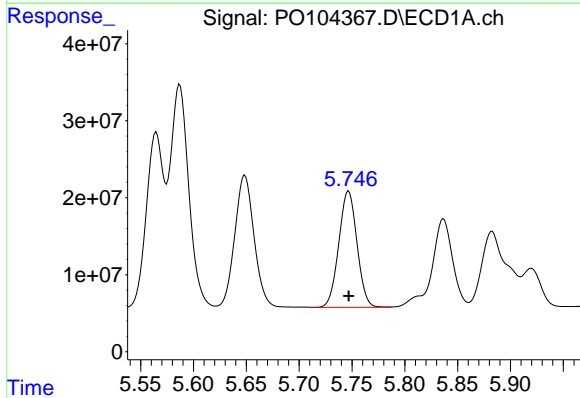
R.T.: 5.649 min
 Delta R.T.: 0.000 min
 Response: 220291453
 Conc: 953.11 ng/ml

Instrument :
 ECD_O
 ClientSampleId :
 AR1660ICC1000



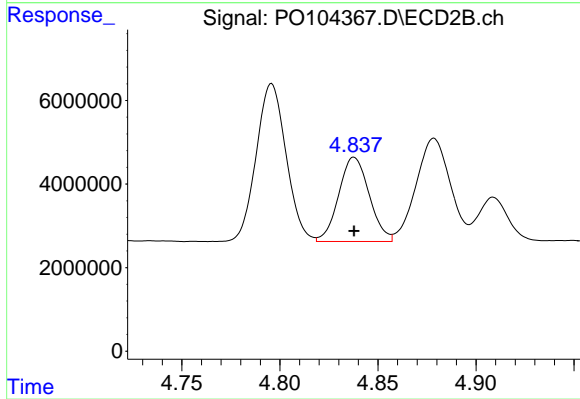
#5 AR-1016-3

R.T.: 4.796 min
 Delta R.T.: 0.000 min
 Response: 40152359
 Conc: 974.40 ng/ml



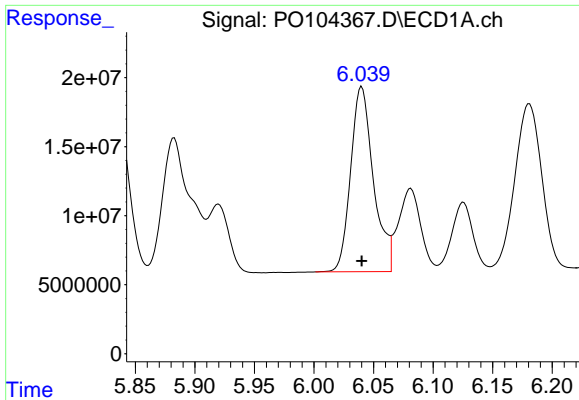
#6 AR-1016-4

R.T.: 5.747 min
 Delta R.T.: 0.000 min
 Response: 181543307
 Conc: 959.79 ng/ml



#6 AR-1016-4

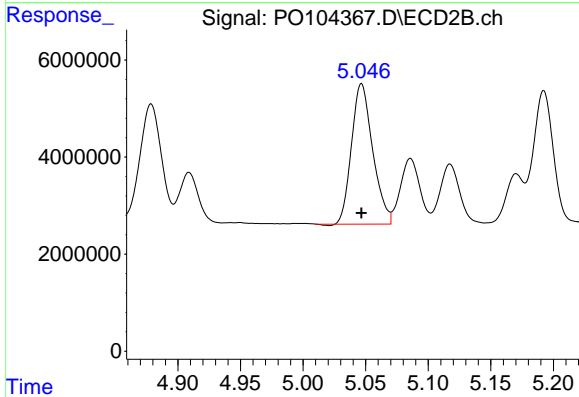
R.T.: 4.838 min
 Delta R.T.: 0.000 min
 Response: 21896937
 Conc: 956.53 ng/ml



#7 AR-1016-5

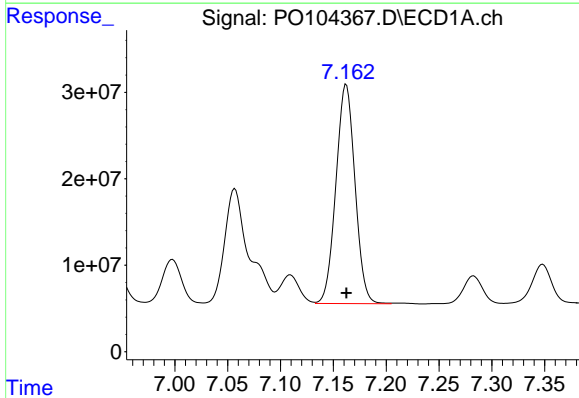
R.T.: 6.040 min
Delta R.T.: 0.000 min
Response: 177944627
Conc: 960.07 ng/ml

Instrument :
ECD_O
ClientSampleId :
AR1660ICC1000



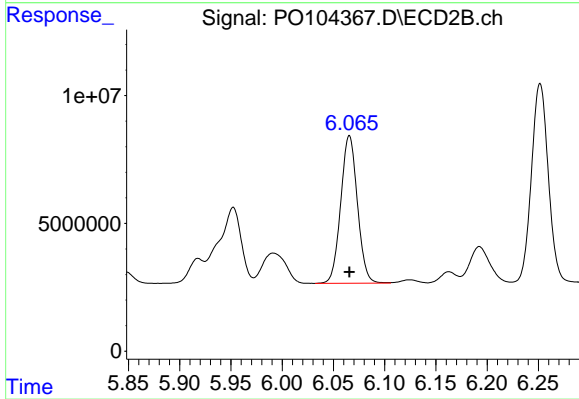
#7 AR-1016-5

R.T.: 5.047 min
Delta R.T.: 0.000 min
Response: 34063318
Conc: 951.63 ng/ml



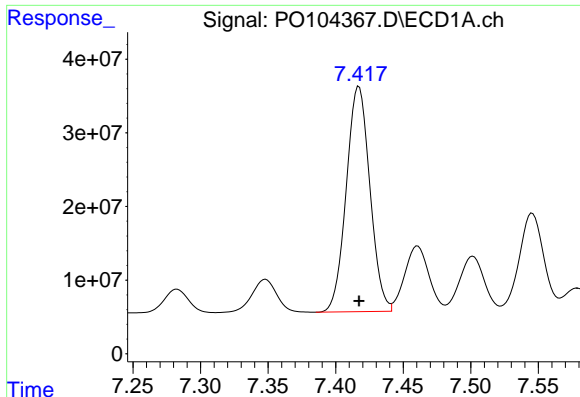
#31 AR-1260-1

R.T.: 7.162 min
Delta R.T.: 0.000 min
Response: 318420858
Conc: 962.16 ng/ml



#31 AR-1260-1

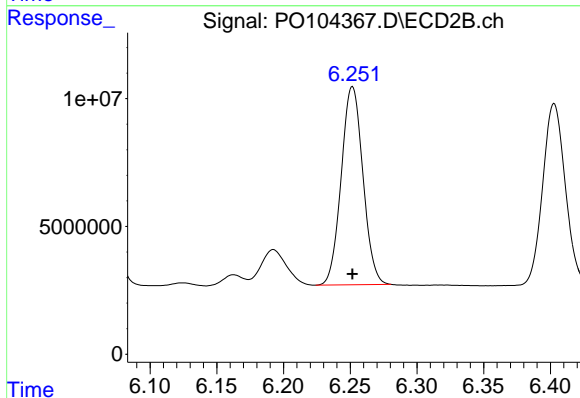
R.T.: 6.066 min
Delta R.T.: 0.000 min
Response: 65322575
Conc: 959.48 ng/ml



#32 AR-1260-2

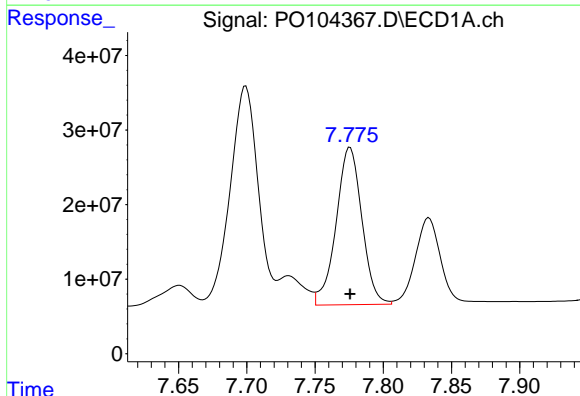
R.T.: 7.417 min
 Delta R.T.: 0.000 min
 Response: 371842556
 Conc: 966.45 ng/ml

Instrument :
 ECD_O
 ClientSampleId :
 AR1660ICC1000



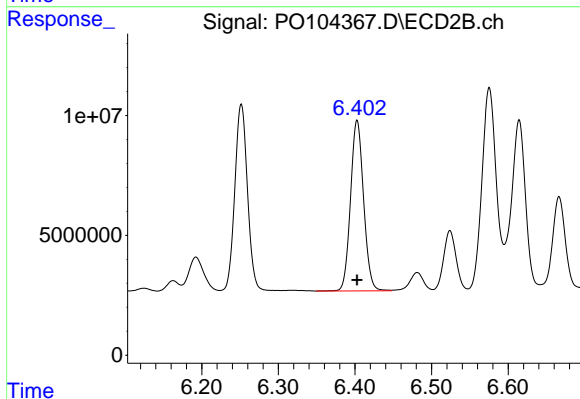
#32 AR-1260-2

R.T.: 6.252 min
 Delta R.T.: 0.000 min
 Response: 87676982
 Conc: 957.58 ng/ml



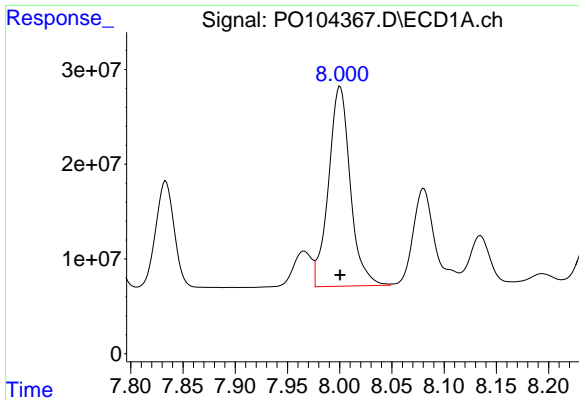
#33 AR-1260-3

R.T.: 7.776 min
 Delta R.T.: 0.000 min
 Response: 277323688
 Conc: 962.85 ng/ml



#33 AR-1260-3

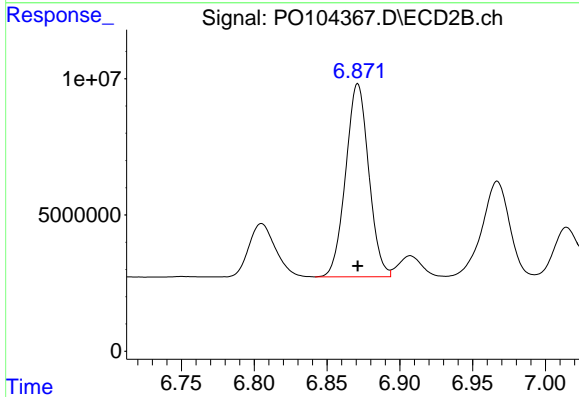
R.T.: 6.403 min
 Delta R.T.: 0.000 min
 Response: 84981278
 Conc: 964.34 ng/ml



#34 AR-1260-4

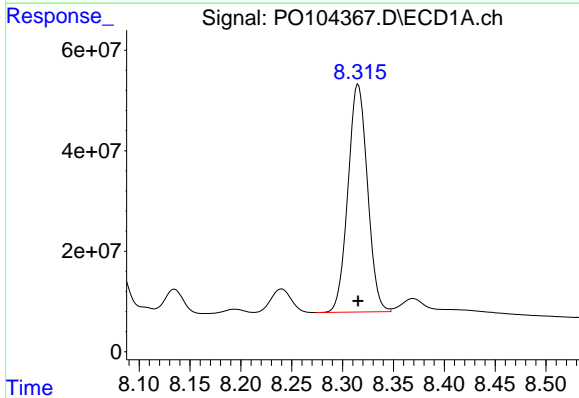
R.T.: 8.000 min
 Delta R.T.: 0.000 min
 Response: 305518152
 Conc: 961.36 ng/ml

Instrument :
 ECD_O
 ClientSampleId :
 AR1660ICC1000



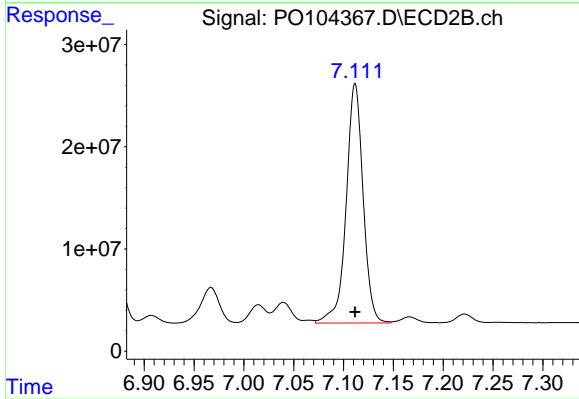
#34 AR-1260-4

R.T.: 6.871 min
 Delta R.T.: 0.000 min
 Response: 78176015
 Conc: 965.93 ng/ml



#35 AR-1260-5

R.T.: 8.315 min
 Delta R.T.: 0.000 min
 Response: 605024146
 Conc: 976.65 ng/ml



#35 AR-1260-5

R.T.: 7.112 min
 Delta R.T.: 0.000 min
 Response: 277078506
 Conc: 979.46 ng/ml