

Data Path : Z:\pestpcbsrv\HPCHEM1\ECD_O\Data\P0062121\
 Data File : P0078978.D
 Signal(s) : Signal #1: ECD1A.CH Signal #2: ECD2B.CH
 Acq On : 21 Jun 2021 11:28
 Operator : DD\AJ
 Sample : M2757-07 5X
 Misc :
 ALS Vial : 11 Sample Multiplier: 1

Instrument :
 ECD_O
Client Sampled :
 JEH705N-N-1

Integration File signal 1: autoint1.e
 Integration File signal 2: autoint2.e
 Quant Time: Jun 22 02:09:32 2021
 Quant Method : Z:\pestpcbsrv\HPCHEM1\ECD_O\methods\P0061921.M
 Quant Title : GC EXTRACTABLES
 QLast Update : Sun Jun 20 03:02:02 2021
 Response via : Initial Calibration
 Integrator: ChemStation 6890 Scale Mode: Small noise peaks clipped

Manual Integrations
APPROVED
 Ankita
 6/22/2021 12:20:22 PM

Volume Inj. : 2 µl
 Signal #1 Phase : ZB-MR1 Signal #2 Phase: ZB-MR2
 Signal #1 Info : 30Mx0.32mmx 0.50µ Signal #2 Info : 30M x 0.32mm x 0.25µm

Compound	RT#1	RT#2	Resp#1	Resp#2	ng/ml	ng/ml
System Monitoring Compounds						
1) SA Tetrachlo...	4.331	3.607	207320	93673	2.627	3.152
2) SA Decachlor...	9.937	8.788	175974	90187	2.818m	3.027
Target Compounds						
26) L6 AR-1254-1	6.520	5.689	93662	67031	34.773	40.347
27) L6 AR-1254-2	6.748	5.846	141290	48673	33.685	33.027
28) L6 AR-1254-3	7.123	6.259	175131	63963	39.324	28.757 #
29) L6 AR-1254-4	7.418	6.497	68805	38116	22.361	28.033 #
30) L6 AR-1254-5	7.839	6.919	106200	53351	32.533m	26.794m

(f)=RT Delta > 1/2 Window (#)=Amounts differ by > 25% (m)=manual int.

Data Path : Z:\pestpcbsrv\HPCHEM1\ECD_O\Data\PO062121\
 Data File : PO078978.D
 Signal(s) : Signal #1: ECD1A.CH Signal #2: ECD2B.CH
 Acq On : 21 Jun 2021 11:28
 Operator : DD\AJ
 Sample : M2757-07 5X
 Misc :
 ALS Vial : 11 Sample Multiplier: 1

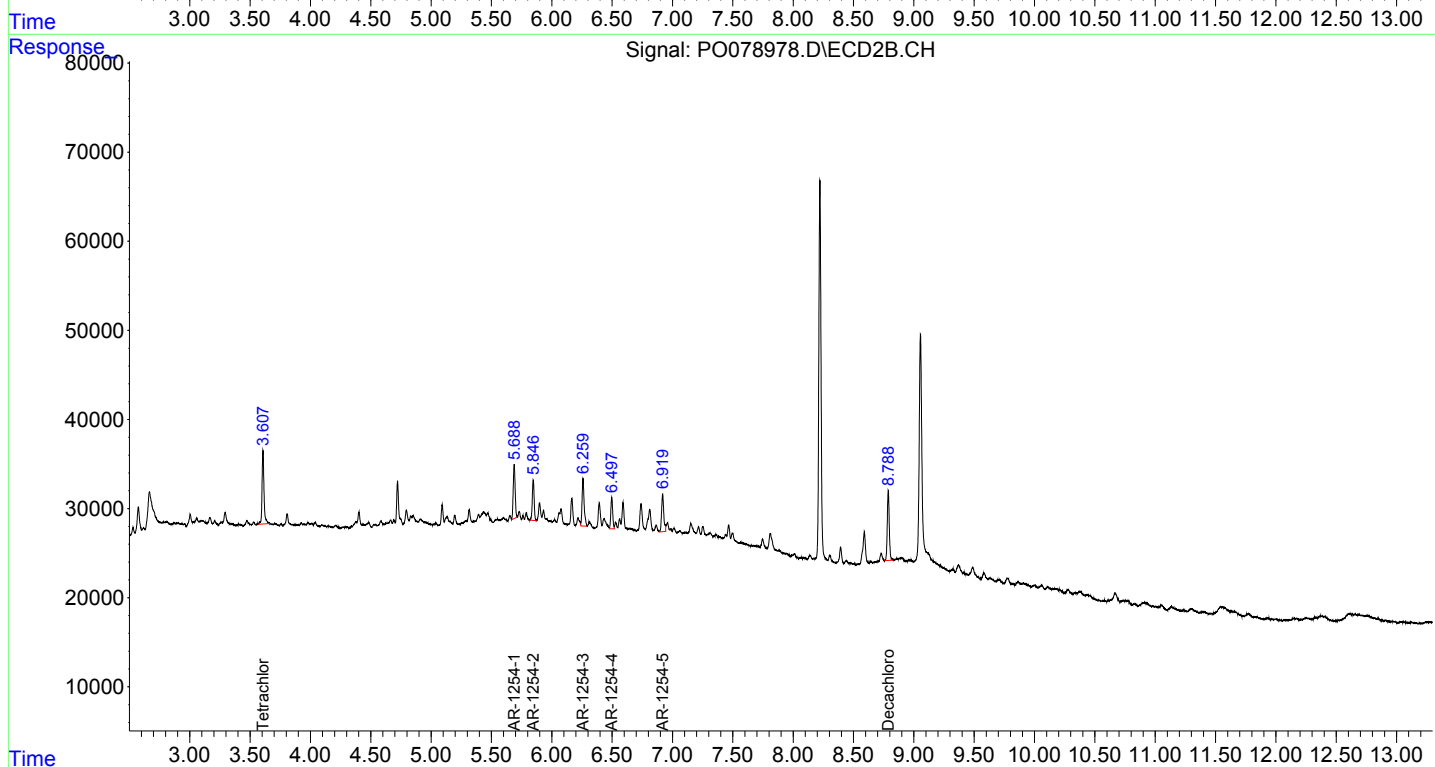
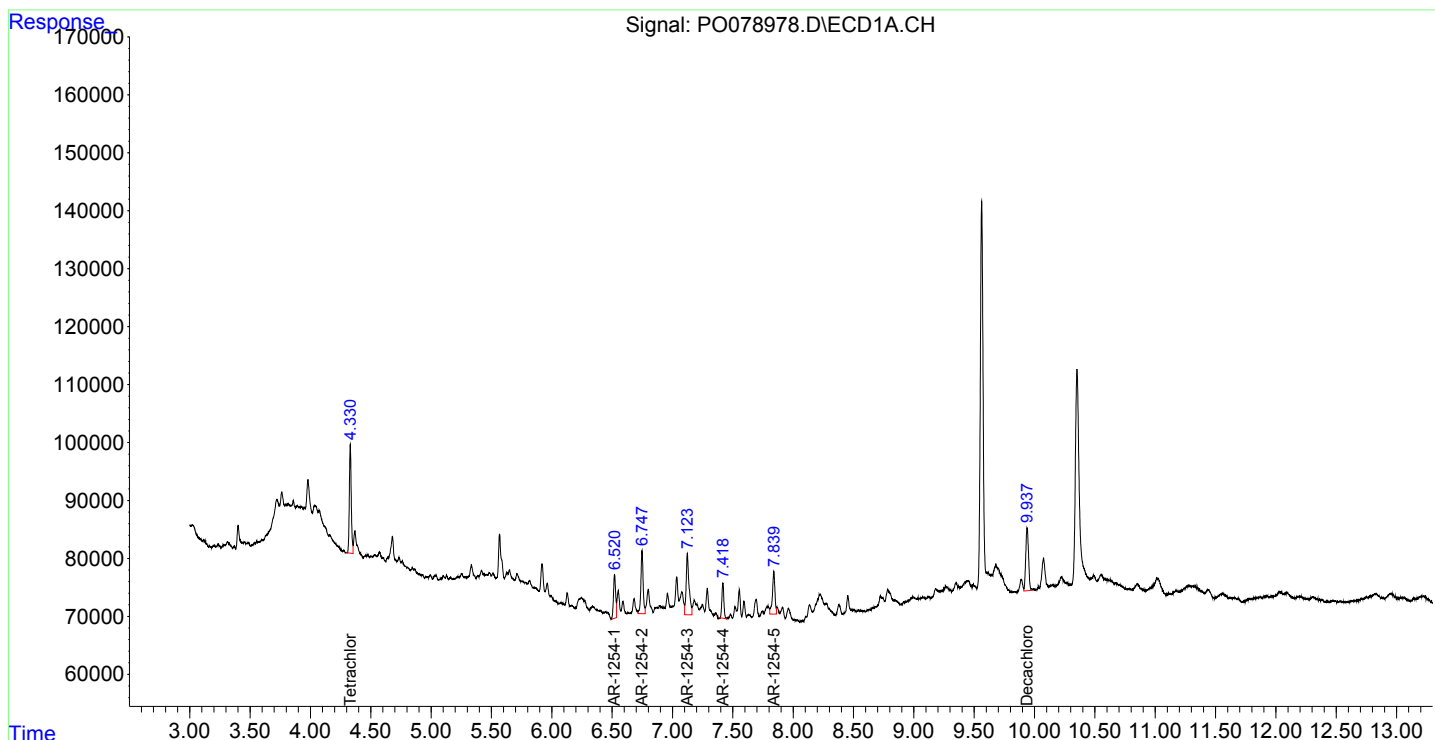
Instrument :
 ECD_O
 ClientSampled :
 JEH705N-N-1

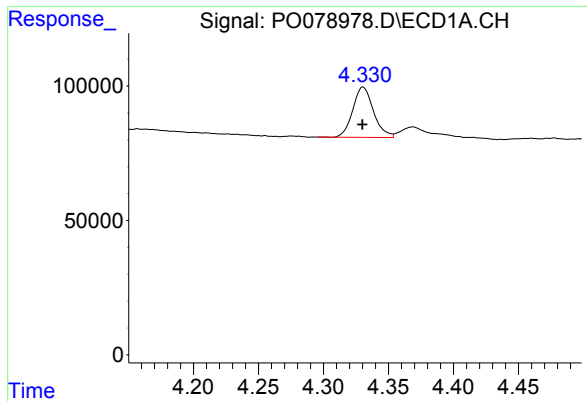
Integration File signal 1: autoint1.e
 Integration File signal 2: autoint2.e
 Quant Time: Jun 22 02:09:32 2021
 Quant Method : Z:\pestpcbsrv\HPCHEM1\ECD_O\methods\PO061921.M
 Quant Title : GC EXTRACTABLES
 QLast Update : Sun Jun 20 03:02:02 2021
 Response via : Initial Calibration
 Integrator: ChemStation 6890 Scale Mode: Small noise peaks clipped

Manual Integrations
 APPROVED

Ankita
 6/22/2021 12:20:22 PM

Volume Inj. : 2 µl
 Signal #1 Phase : ZB-MR1 Signal #2 Phase: ZB-MR2
 Signal #1 Info : 30Mx0.32mmx 0.50µ Signal #2 Info : 30M x 0.32mm x 0.25µm

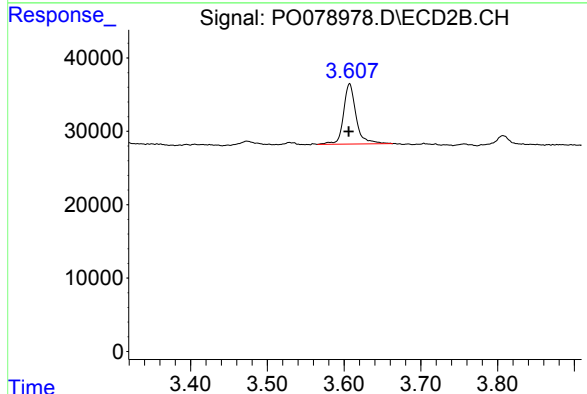




#1 Tetrachloro-m-xylene

R.T.: 4.331 min
 Delta R.T.: 0.000 min
 Response: 207320
 Conc: 2.63 ng/ml

Instrument :
 ECD_O
 ClientSampled :
 JEH705N-N-1

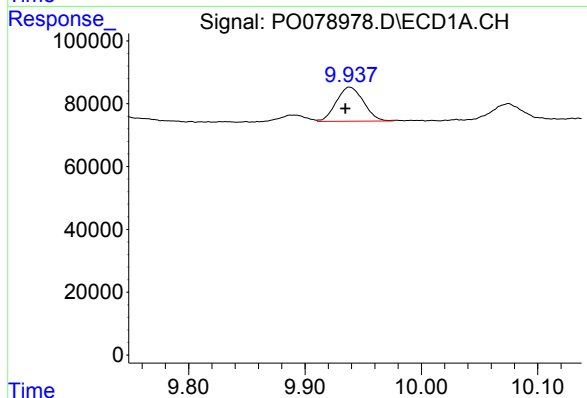


#1 Tetrachloro-m-xylene

R.T.: 3.607 min
 Delta R.T.: 0.000 min
 Response: 93673
 Conc: 3.15 ng/ml

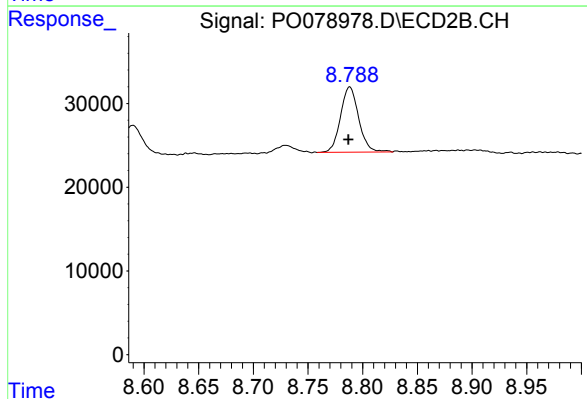
Manual Integrations
 APPROVED

Ankita
 6/22/2021 12:20:22 PM



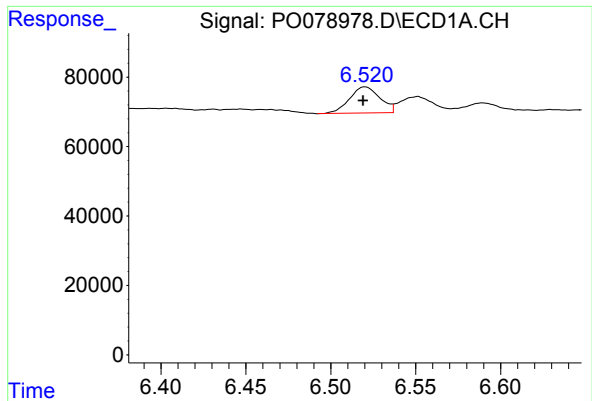
#2 Decachlorobiphenyl

R.T.: 9.937 min
 Delta R.T.: 0.003 min
 Response: 175974
 Conc: 2.82 ng/ml m



#2 Decachlorobiphenyl

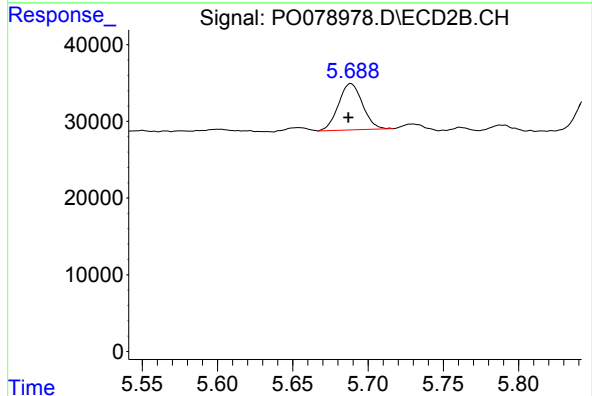
R.T.: 8.788 min
 Delta R.T.: 0.001 min
 Response: 90187
 Conc: 3.03 ng/ml



#26 AR-1254-1

R.T.: 6.520 min
 Delta R.T.: 0.001 min
 Response: 93662
 Conc: 34.77 ng/ml

Instrument :
 ECD_O
 ClientSampled :
 JEH705N-N-1

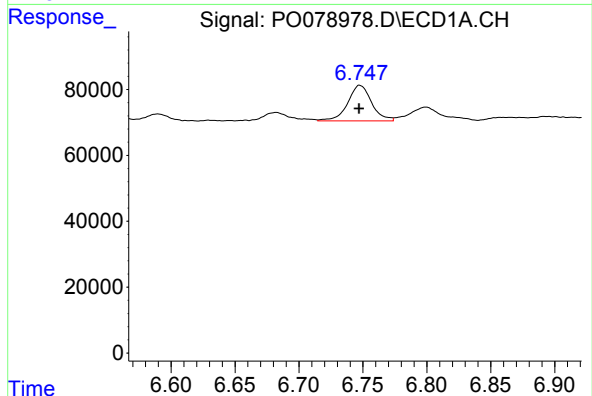


#26 AR-1254-1

R.T.: 5.689 min
 Delta R.T.: 0.002 min
 Response: 67031
 Conc: 40.35 ng/ml

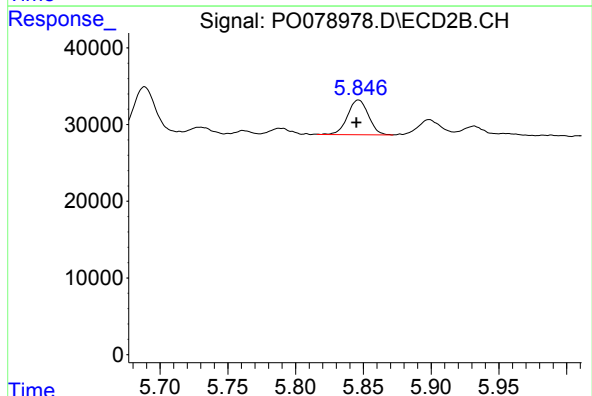
Manual Integrations
 APPROVED

Ankita
 6/22/2021 12:20:22 PM



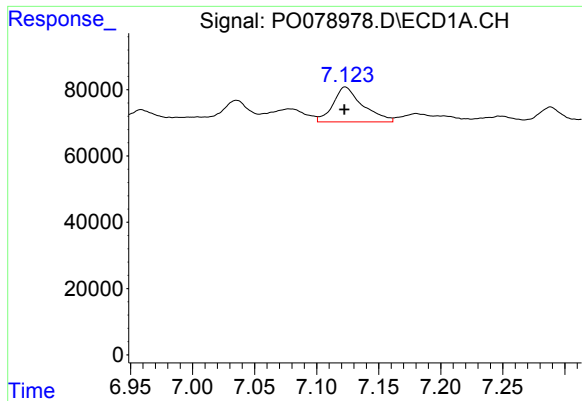
#27 AR-1254-2

R.T.: 6.748 min
 Delta R.T.: 0.000 min
 Response: 141290
 Conc: 33.69 ng/ml



#27 AR-1254-2

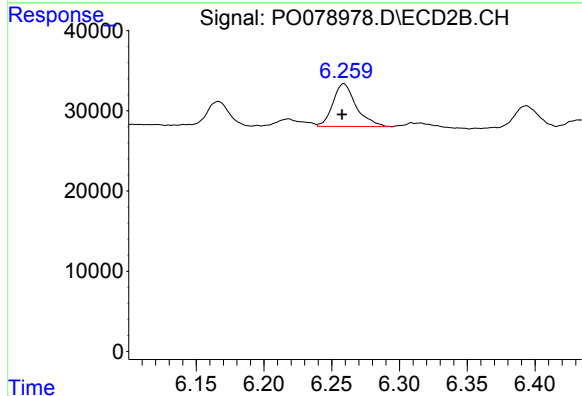
R.T.: 5.846 min
 Delta R.T.: 0.002 min
 Response: 48673
 Conc: 33.03 ng/ml



#28 AR-1254-3

R.T.: 7.123 min
 Delta R.T.: 0.000 min
 Response: 175131
 Conc: 39.32 ng/ml

Instrument :
 ECD_O
 ClientSampled :
 JEH705N-N-1

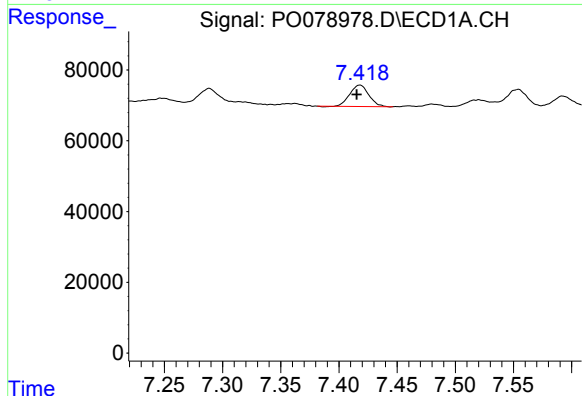


#28 AR-1254-3

R.T.: 6.259 min
 Delta R.T.: 0.001 min
 Response: 63963
 Conc: 28.76 ng/ml

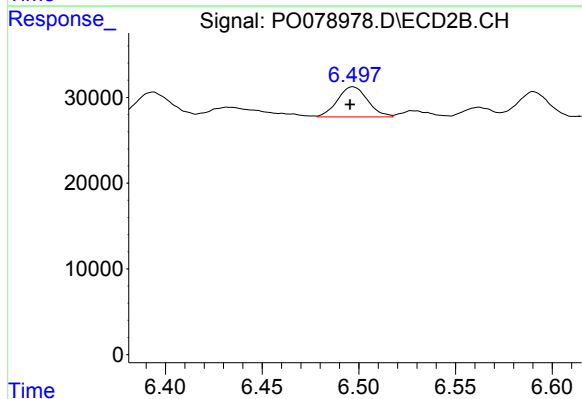
Manual Integrations
 APPROVED

Ankita
 6/22/2021 12:20:22 PM



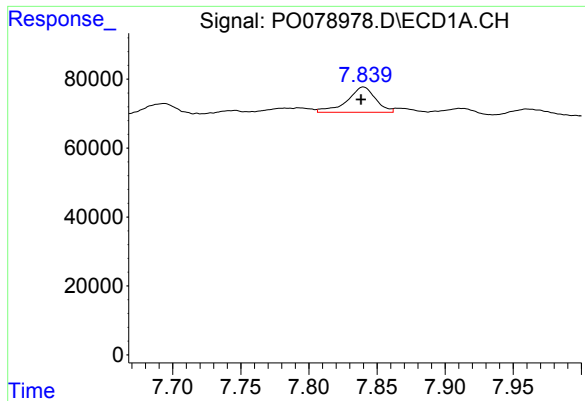
#29 AR-1254-4

R.T.: 7.418 min
 Delta R.T.: 0.003 min
 Response: 68805
 Conc: 22.36 ng/ml



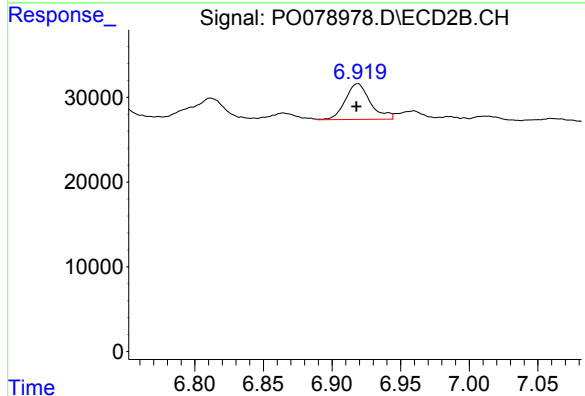
#29 AR-1254-4

R.T.: 6.497 min
 Delta R.T.: 0.001 min
 Response: 38116
 Conc: 28.03 ng/ml



#30 AR-1254-5

R.T.: 7.839 min
Delta R.T.: 0.001 min
Response: 106200
Conc: 32.53 ng/ml m



#30 AR-1254-5

R.T.: 6.919 min
Delta R.T.: 0.000 min
Response: 53351
Conc: 26.79 ng/ml m

Instrument :
ECD_O
ClientSampleId :
JEH705N-N-1

Manual Integrations
APPROVED

Ankita
6/22/2021 12:20:22 PM