

Data Path : Z:\pestpcbsrv\HPCHEM1\ECD_0\Data\P0062222\
 Data File : P0087248.D
 Signal(s) : Signal #1: ECD1A.ch Signal #2: ECD2B.ch
 Acq On : 22 Jun 2022 09:59
 Operator : YP/AJ
 Sample : AR1254CCC500
 Misc :
 ALS Vial : 6 Sample Multiplier: 1

Instrument :
 ECD_0
 ClientSampleId :

Integration File signal 1: autoint1.e
 Integration File signal 2: autoint2.e
 Quant Time: Jun 22 10:56:04 2022
 Quant Method : Z:\pestpcbsrv\HPCHEM1\ECD_0\methods\P0060922.M
 Quant Title : GC EXTRACTABLES
 QLast Update : Fri Jun 10 04:33:49 2022
 Response via : Initial Calibration
 Integrator: ChemStation

Volume Inj. : 2 µl
 Signal #1 Phase : ZB-MR1 Signal #2 Phase: ZB-MR2
 Signal #1 Info : 30Mx0.32mmx 0.50µ Signal #2 Info : 30M x 0.32mm x 0.25µm

Compound	RT#1	RT#2	Resp#1	Resp#2	ng/ml	ng/ml
System Monitoring Compounds						
1) SA Tetrachlo...	4.492	3.640	111.4E6	56805708	47.670	50.452
2) SA Decachlor...	10.348	8.644	87821732	36170107	47.721	46.003
Target Compounds						
3) L1 AR-1016-1	5.674	4.727	995332	426749	11.891	12.674
4) L1 AR-1016-2	5.699	4.745	630336	302998	5.361	6.514
5) L1 AR-1016-3	5.759	4.923	640188	282995	8.505	11.047 #
6) L1 AR-1016-4	5.859	4.963	632146	9804926	10.550	480.951 #
7) L1 AR-1016-5	6.156	5.176	12869834	5715246	218.977	223.635
8) L2 AR-1221-1	4.708	3.854	104057	34810	3.717	2.629 #
9) L2 AR-1221-2	4.801	3.940	1660519	855121	78.643	86.135
10) L2 AR-1221-3	4.865	4.017	274043	154622	4.243	5.314 #
11) L3 AR-1232-1	4.865	4.017	274043	154622	4.660	5.796
12) L3 AR-1232-2	5.207	4.745	515708	302998	17.818	13.972
13) L3 AR-1232-3	5.699	4.923	630336	282995	11.740	24.926 #
14) L3 AR-1232-4	5.859	5.004	632146	3043110	23.537	297.678 #
15) L3 AR-1232-5	5.951	5.176	23399603	5715246	1052.607	507.071 #
16) L4 AR-1242-1	5.674	4.727	995332	426749	15.486	16.123
17) L4 AR-1242-2	5.699	4.745	630336	302998	6.898	8.412
18) L4 AR-1242-3	5.759	4.923	640188	282995	10.907	14.162 #
19) L4 AR-1242-4	5.859	5.004	632146	3043110	13.569	155.689 #
20) L4 AR-1242-5	6.606	5.528	12093462	23444333	254.876	1004.243 #
21) L5 AR-1248-1	5.674	4.727	995332	426749	20.515	21.567
22) L5 AR-1248-2	5.951	4.963	23399603	9804926	328.461	360.861
23) L5 AR-1248-3	6.156	5.004	12869834	3043110	168.595	106.483 #
24) L5 AR-1248-4	6.563	5.176	19019933	5715246	228.453	173.700
25) L5 AR-1248-5	6.606	5.569	12093462	2797037	150.699	87.506 #
26) L6 AR-1254-1	6.538	5.528	39934859	23444333	458.039	484.407
27) L6 AR-1254-2	6.758	5.676	60655343	20838630	464.457	488.578
28) L6 AR-1254-3	7.127	6.078	60292733	33736575	462.115	493.644
29) L6 AR-1254-4	7.414	6.307	43177552	21119967	451.912	500.615
30) L6 AR-1254-5	7.837	6.724	48814671	30322100	467.233	499.295
31) L7 AR-1260-1	7.292	6.209	24936659	16888716	247.453	360.555 #
32) L7 AR-1260-2	7.551	6.397	27069903	13780634	229.690	246.022
33) L7 AR-1260-3	7.897	6.548	6944556	13975783	81.919	262.640 #
34) L7 AR-1260-4	8.127	7.021	20047734	1559155	196.847	38.687 #
35) L7 AR-1260-5	8.468	7.261	7032422	3377452	38.693	36.005
36) L8 AR-1262-1	7.897	6.814	6944556	1017934	56.475	42.075 #
37) L8 AR-1262-2	8.468	7.261	7032422	3377452	34.262	33.432
38) L8 AR-1262-3	8.808	7.544	5925914	133451	41.046	3.295 #
39) L8 AR-1262-4	8.857	7.606	1642842	3487191	23.268	46.585 #
40) L8 AR-1262-5	9.555	8.102	532181	119211	6.886	3.465 #
41) L9 AR-1268-1	8.808	7.544	5925914	133451	23.052	1.117 #

Data Path : Z:\pestpcbsrv\HPCHEM1\ECD_0\Data\P0062222\
 Data File : P0087248.D
 Signal(s) : Signal #1: ECD1A.ch Signal #2: ECD2B.ch
 Acq On : 22 Jun 2022 09:59
 Operator : YP/AJ
 Sample : AR1254CCC500
 Misc :
 ALS Vial : 6 Sample Multiplier: 1

Instrument :
 ECD_0
 ClientSampleId :

Integration File signal 1: autoint1.e
 Integration File signal 2: autoint2.e
 Quant Time: Jun 22 10:56:04 2022
 Quant Method : Z:\pestpcbsrv\HPCHEM1\ECD_0\methods\P0060922.M
 Quant Title : GC EXTRACTABLES
 QLast Update : Fri Jun 10 04:33:49 2022
 Response via : Initial Calibration
 Integrator: ChemStation

Volume Inj. : 2 µl
 Signal #1 Phase : ZB-MR1 Signal #2 Phase: ZB-MR2
 Signal #1 Info : 30Mx0.32mmx 0.50µ Signal #2 Info : 30M x 0.32mm x 0.25µm

	Compound	RT#1	RT#2	Resp#1	Resp#2	ng/ml	ng/ml
42)	L9 AR-1268-2	8.857	7.606	1642842	3487191	6.939	32.027 #
43)	L9 AR-1268-3	9.125	7.817	175036	91762	0.874	0.999
44)	L9 AR-1268-4	9.555	8.102	532181	119211	5.903	3.000 #
45)	L9 AR-1268-5	9.997	8.393	644217	233820	1.007	0.813

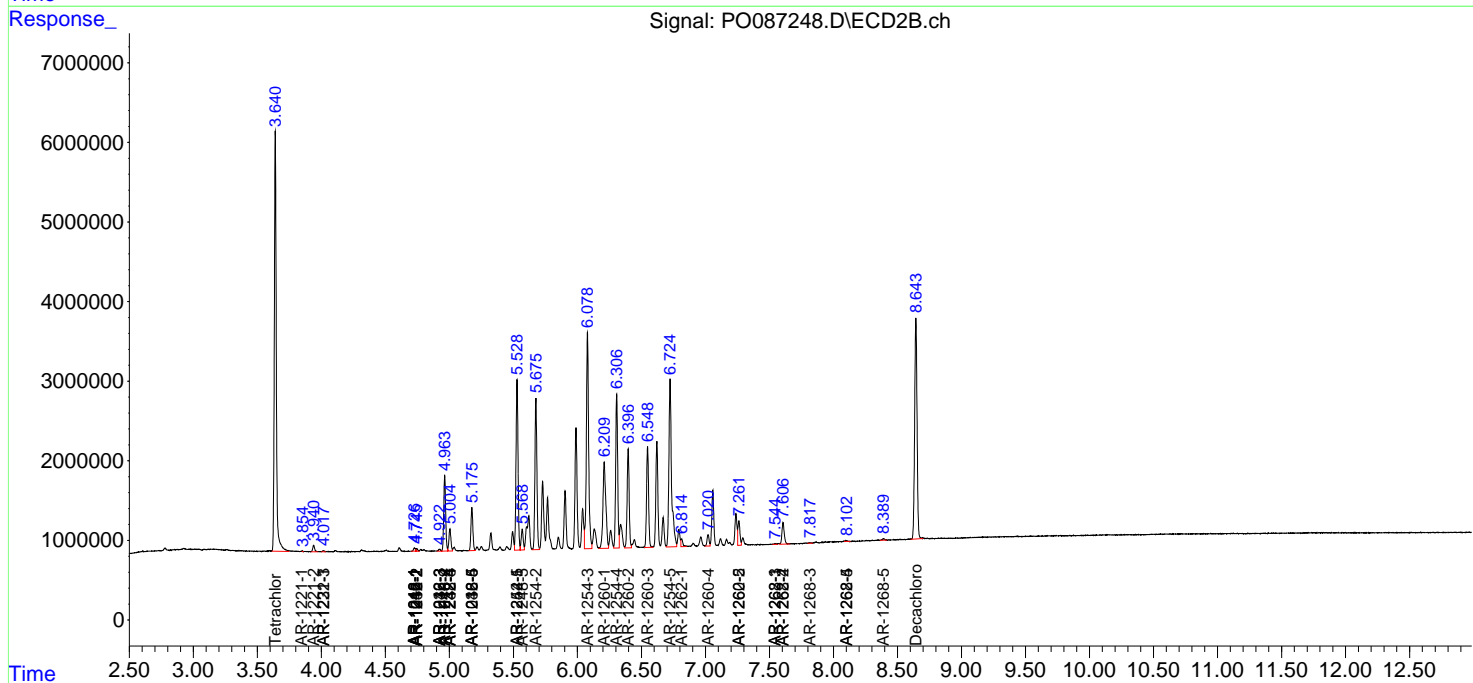
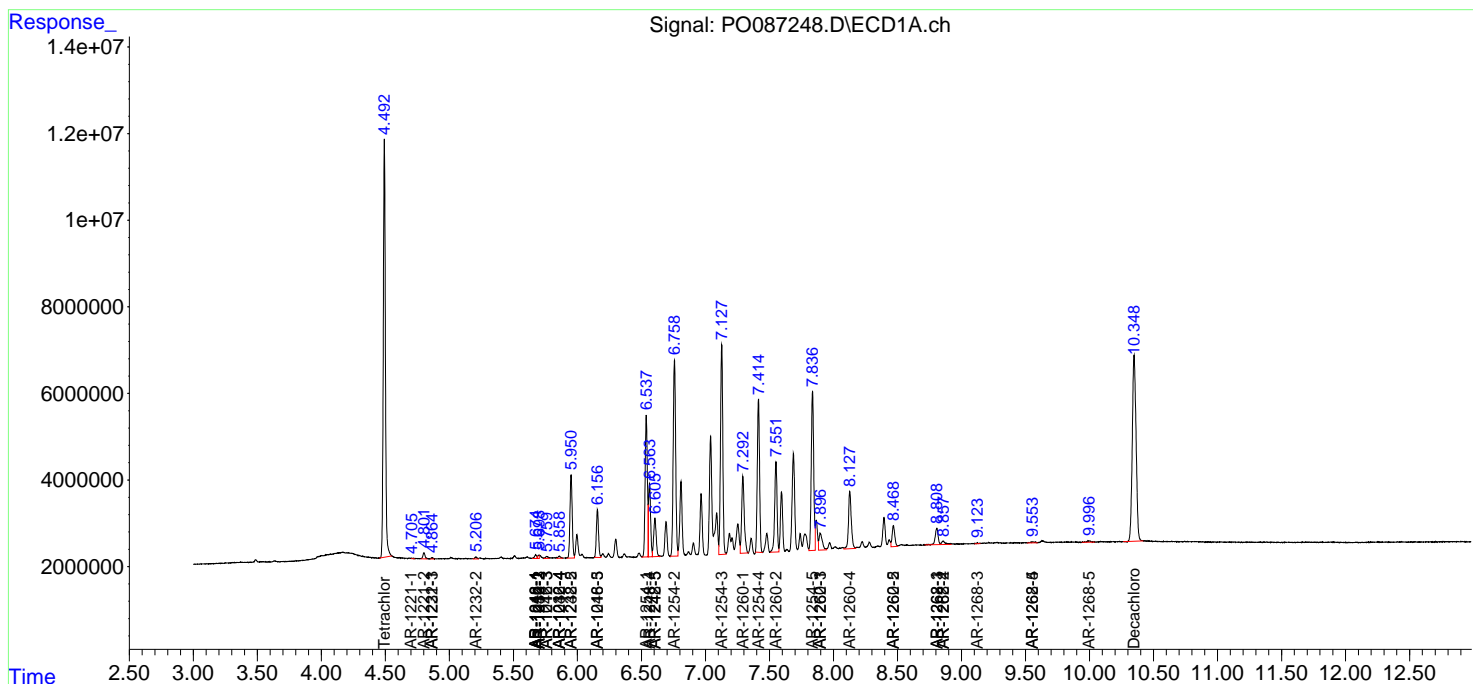
(f)=RT Delta > 1/2 Window (#)=Amounts differ by > 25% (m)=manual int.

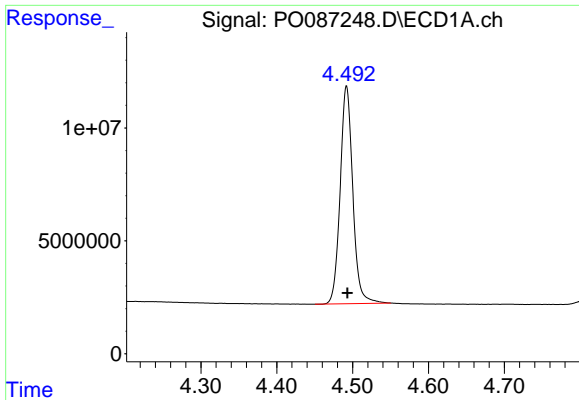
Data Path : Z:\pestpcbsrv\HPCHEM1\ECD_O\Data\PO062222\
 Data File : PO087248.D
 Signal(s) : Signal #1: ECD1A.ch Signal #2: ECD2B.ch
 Acq On : 22 Jun 2022 09:59
 Operator : YP/AJ
 Sample : AR1254CCC500
 Misc :
 ALS Vial : 6 Sample Multiplier: 1

Instrument :
 ECD_O
 ClientSampleId :

Integration File signal 1: autoint1.e
 Integration File signal 2: autoint2.e
 Quant Time: Jun 22 10:56:04 2022
 Quant Method : Z:\pestpcbsrv\HPCHEM1\ECD_O\methods\PO060922.M
 Quant Title : GC EXTRACTABLES
 QLast Update : Fri Jun 10 04:33:49 2022
 Response via : Initial Calibration
 Integrator: ChemStation

Volume Inj. : 2 µl
 Signal #1 Phase : ZB-MR1 Signal #2 Phase: ZB-MR2
 Signal #1 Info : 30Mx0.32mmx 0.50µ Signal #2 Info : 30M x 0.32mm x 0.25µm

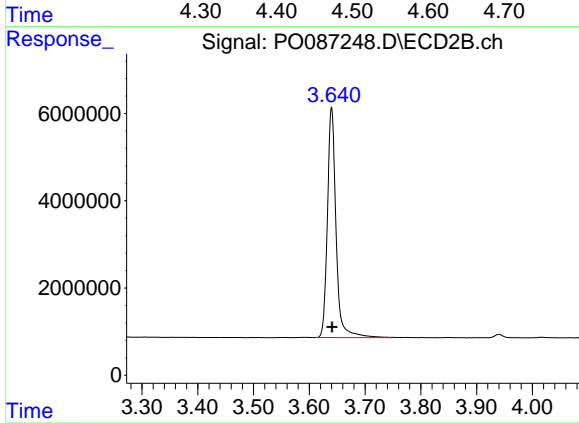




#1 Tetrachloro-m-xylene

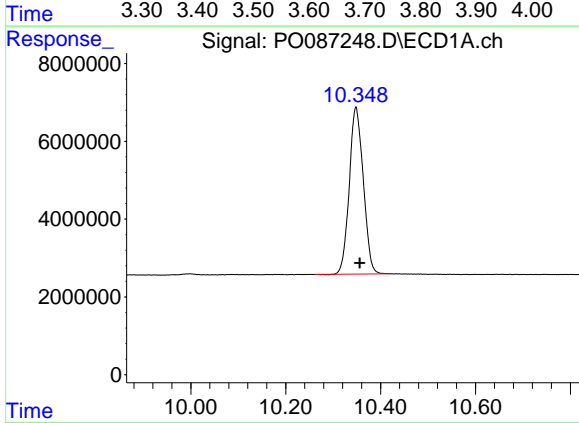
R.T.: 4.492 min
 Delta R.T.: 0.000 min
 Response: 111405325
 Conc: 47.67 ng/ml

Instrument :
 ECD_O
 ClientSampleId :



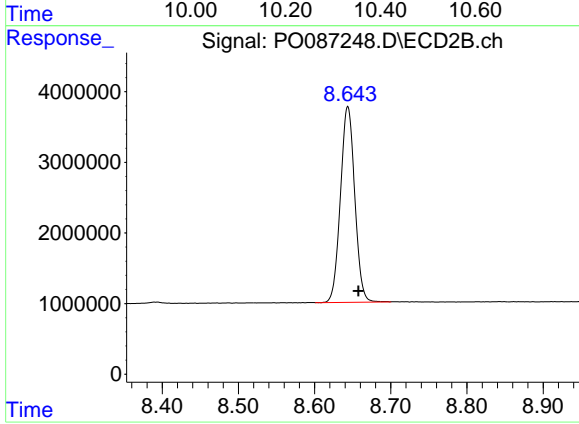
#1 Tetrachloro-m-xylene

R.T.: 3.640 min
 Delta R.T.: 0.000 min
 Response: 56805708
 Conc: 50.45 ng/ml



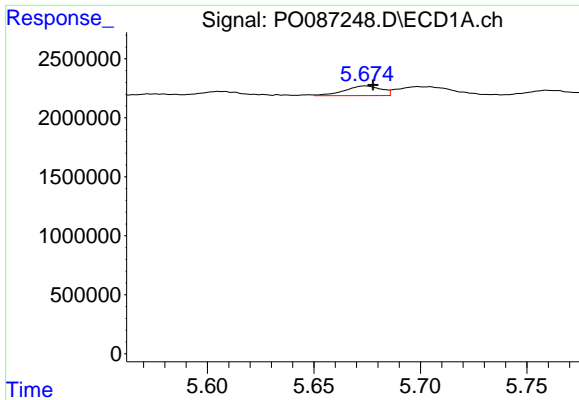
#2 Decachlorobiphenyl

R.T.: 10.348 min
 Delta R.T.: -0.008 min
 Response: 87821732
 Conc: 47.72 ng/ml



#2 Decachlorobiphenyl

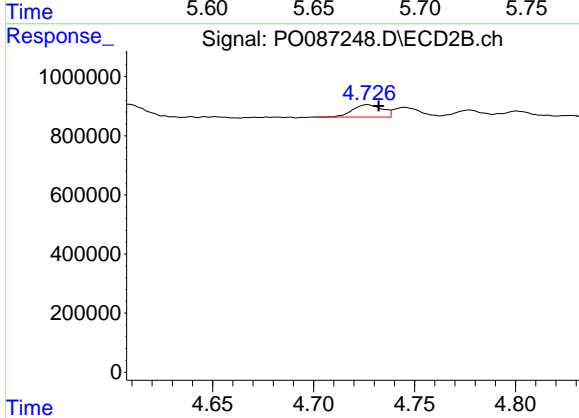
R.T.: 8.644 min
 Delta R.T.: -0.014 min
 Response: 36170107
 Conc: 46.00 ng/ml



#3 AR-1016-1

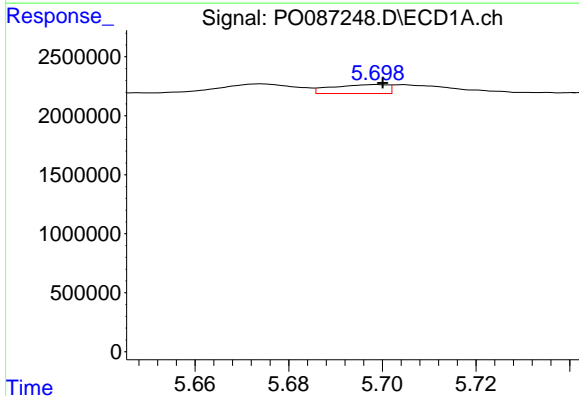
R.T.: 5.674 min
 Delta R.T.: -0.004 min
 Response: 995332
 Conc: 11.89 ng/ml

Instrument :
 ECD_O
 ClientSampleId :



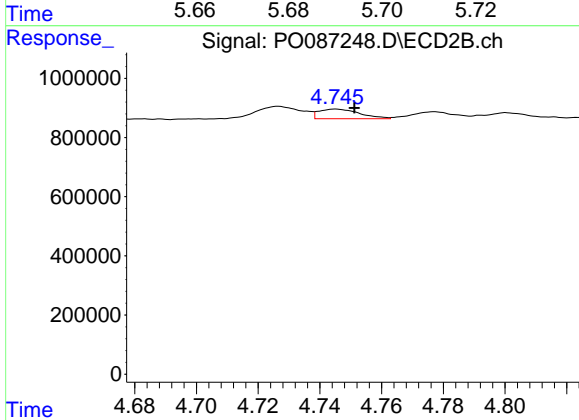
#3 AR-1016-1

R.T.: 4.727 min
 Delta R.T.: -0.006 min
 Response: 426749
 Conc: 12.67 ng/ml



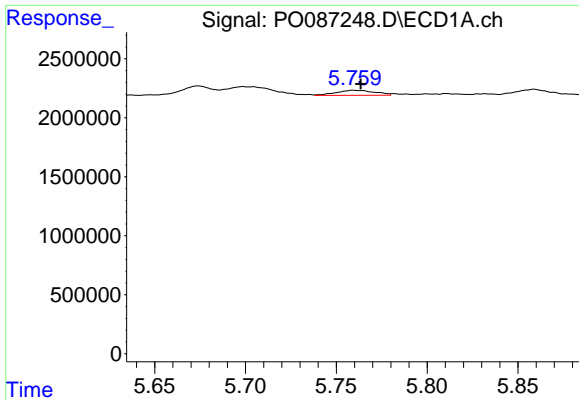
#4 AR-1016-2

R.T.: 5.699 min
 Delta R.T.: -0.001 min
 Response: 630336
 Conc: 5.36 ng/ml



#4 AR-1016-2

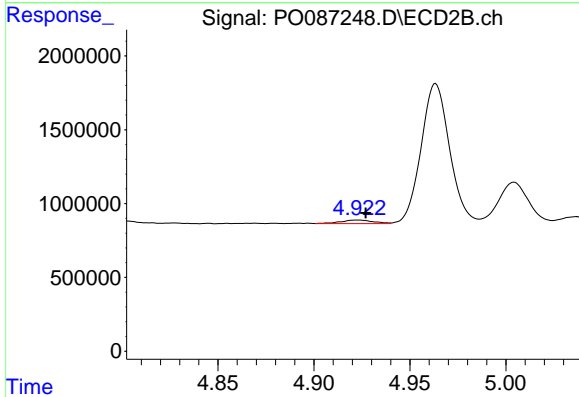
R.T.: 4.745 min
 Delta R.T.: -0.006 min
 Response: 302998
 Conc: 6.51 ng/ml



#5 AR-1016-3

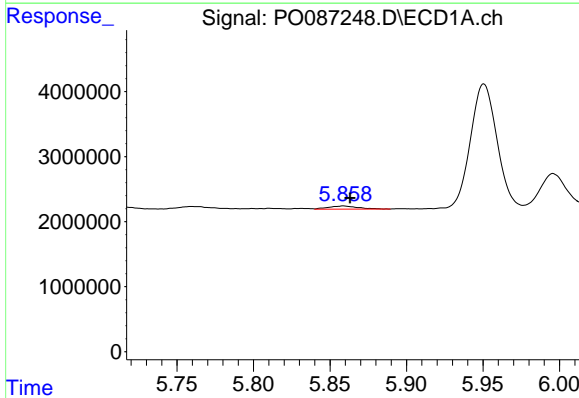
R.T.: 5.759 min
 Delta R.T.: -0.004 min
 Response: 640188
 Conc: 8.50 ng/ml

Instrument :
 ECD_O
 ClientSampleId :



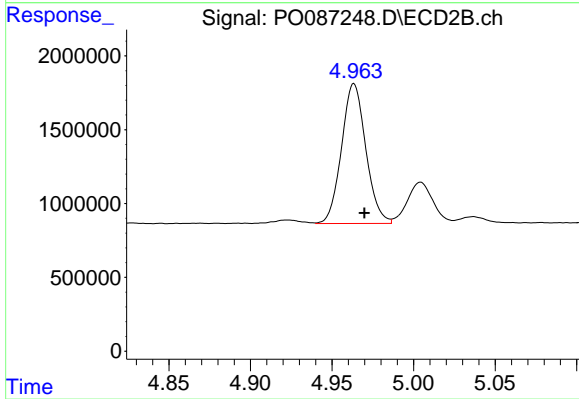
#5 AR-1016-3

R.T.: 4.923 min
 Delta R.T.: -0.004 min
 Response: 282995
 Conc: 11.05 ng/ml



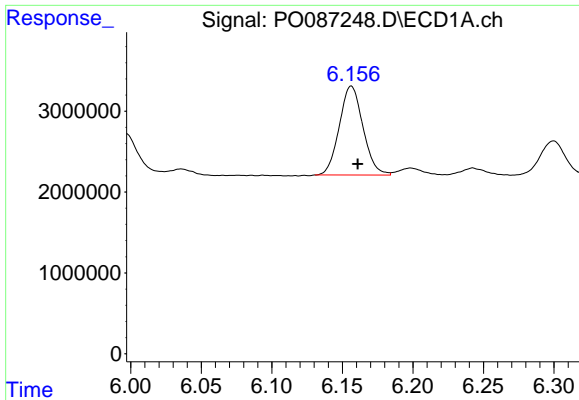
#6 AR-1016-4

R.T.: 5.859 min
 Delta R.T.: -0.004 min
 Response: 632146
 Conc: 10.55 ng/ml



#6 AR-1016-4

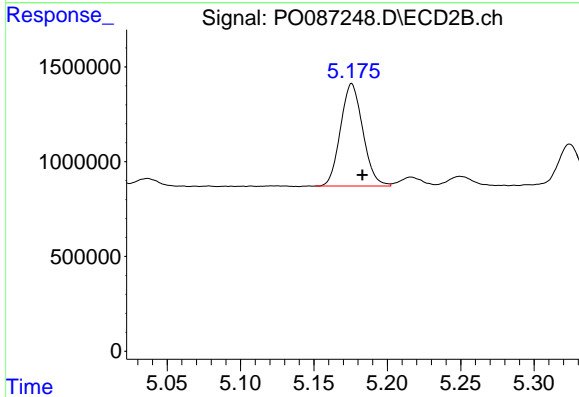
R.T.: 4.963 min
 Delta R.T.: -0.006 min
 Response: 9804926
 Conc: 480.95 ng/ml



#7 AR-1016-5

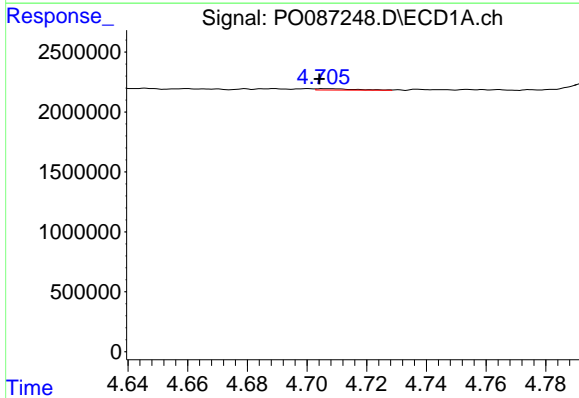
R.T.: 6.156 min
 Delta R.T.: -0.005 min
 Response: 12869834
 Conc: 218.98 ng/ml

Instrument :
 ECD_O
 ClientSampleId :



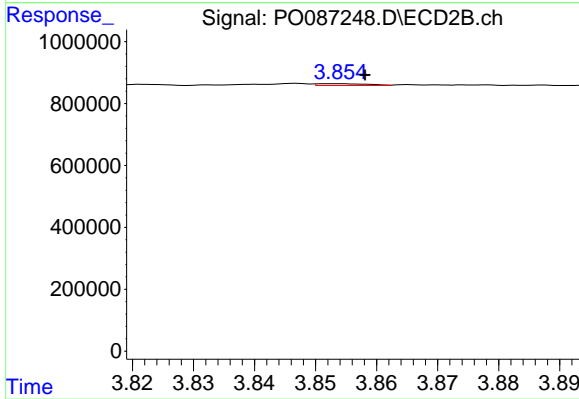
#7 AR-1016-5

R.T.: 5.176 min
 Delta R.T.: -0.007 min
 Response: 5715246
 Conc: 223.63 ng/ml



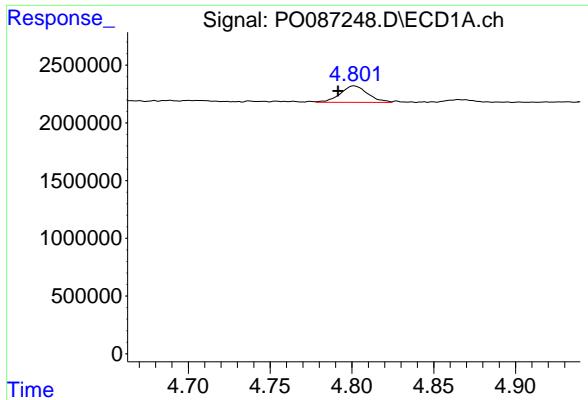
#8 AR-1221-1

R.T.: 4.708 min
 Delta R.T.: 0.004 min
 Response: 104057
 Conc: 3.72 ng/ml



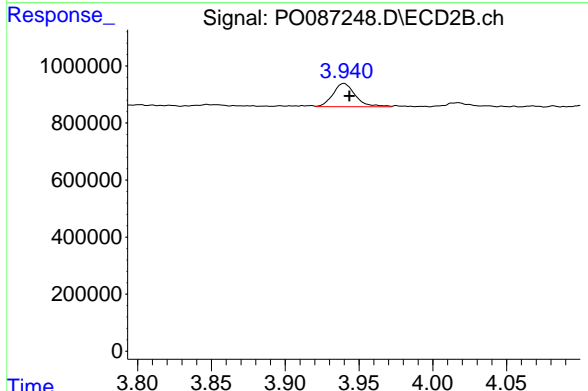
#8 AR-1221-1

R.T.: 3.854 min
 Delta R.T.: -0.004 min
 Response: 34810
 Conc: 2.63 ng/ml

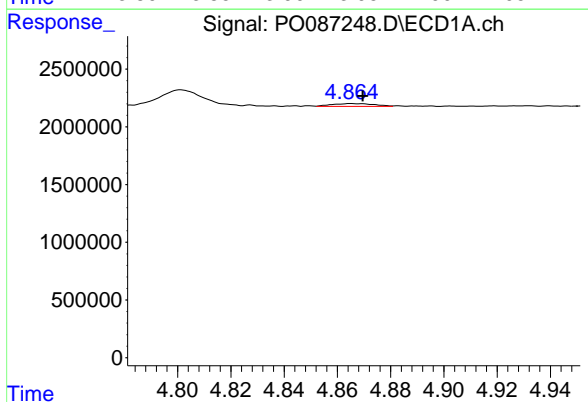


#9 AR-1221-2
 R.T.: 4.801 min
 Delta R.T.: 0.010 min
 Response: 1660519
 Conc: 78.64 ng/ml

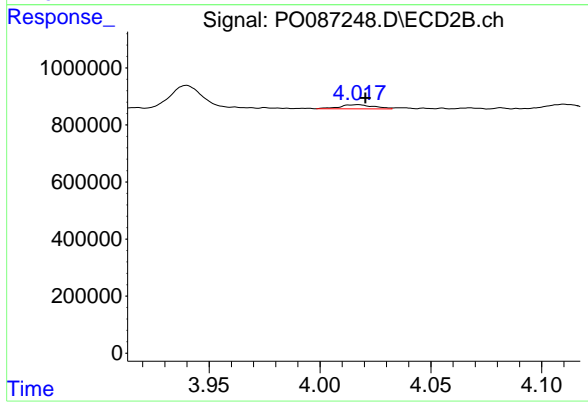
Instrument :
 ECD_O
 ClientSampleId :



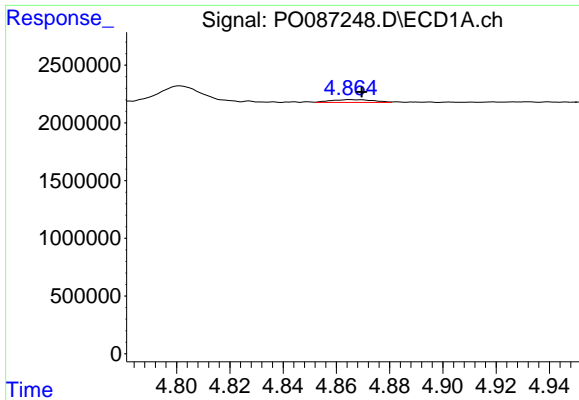
#9 AR-1221-2
 R.T.: 3.940 min
 Delta R.T.: -0.004 min
 Response: 855121
 Conc: 86.14 ng/ml



#10 AR-1221-3
 R.T.: 4.865 min
 Delta R.T.: -0.005 min
 Response: 274043
 Conc: 4.24 ng/ml



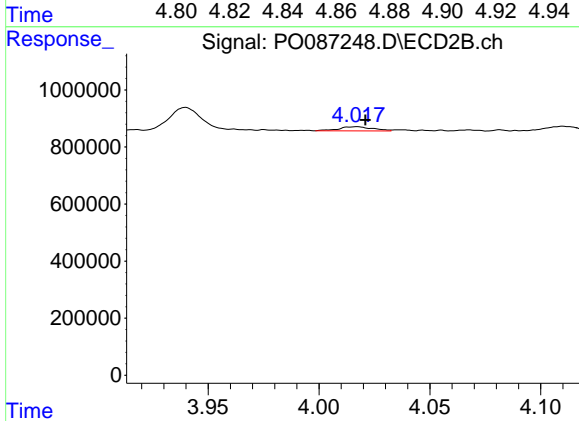
#10 AR-1221-3
 R.T.: 4.017 min
 Delta R.T.: -0.003 min
 Response: 154622
 Conc: 5.31 ng/ml



#11 AR-1232-1

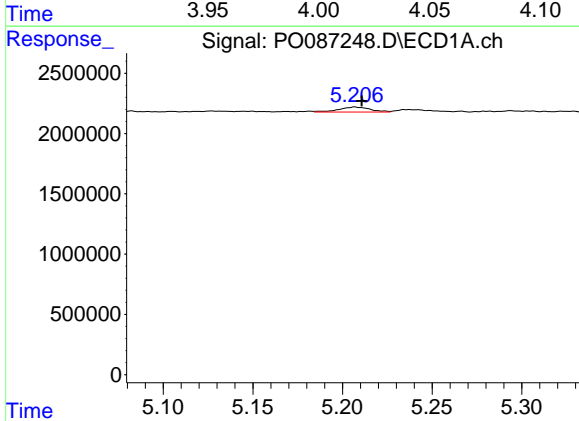
R.T.: 4.865 min
 Delta R.T.: -0.005 min
 Response: 274043
 Conc: 4.66 ng/ml

Instrument :
 ECD_O
 ClientSampleId :



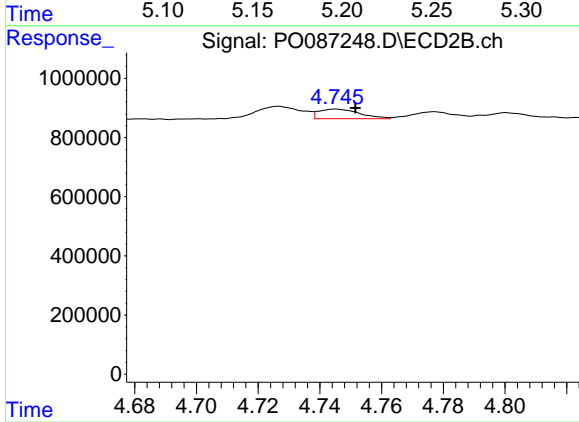
#11 AR-1232-1

R.T.: 4.017 min
 Delta R.T.: -0.004 min
 Response: 154622
 Conc: 5.80 ng/ml



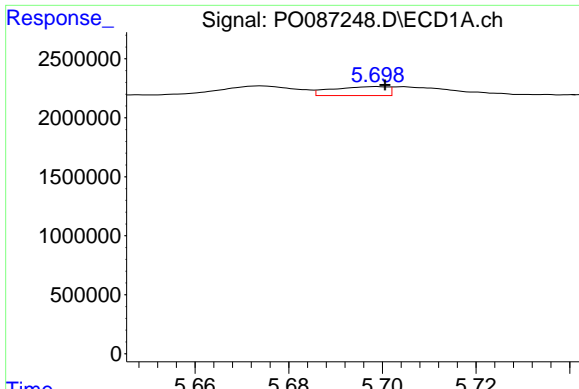
#12 AR-1232-2

R.T.: 5.207 min
 Delta R.T.: -0.004 min
 Response: 515708
 Conc: 17.82 ng/ml



#12 AR-1232-2

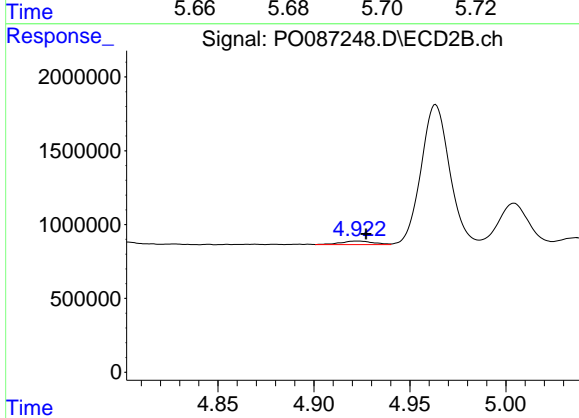
R.T.: 4.745 min
 Delta R.T.: -0.006 min
 Response: 302998
 Conc: 13.97 ng/ml



#13 AR-1232-3

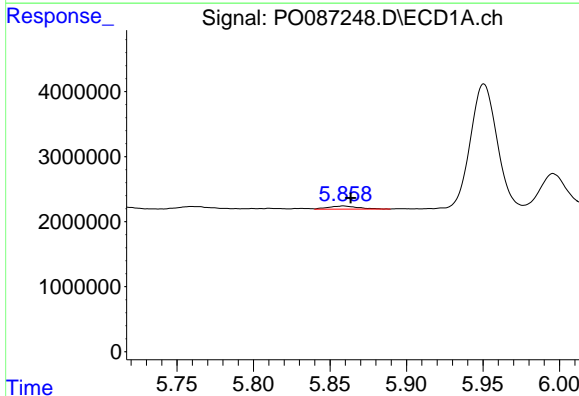
R.T.: 5.699 min
 Delta R.T.: -0.002 min
 Response: 630336
 Conc: 11.74 ng/ml

Instrument :
 ECD_O
 ClientSampleId :



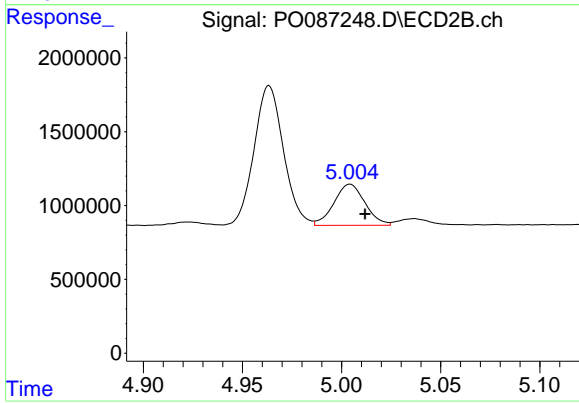
#13 AR-1232-3

R.T.: 4.923 min
 Delta R.T.: -0.005 min
 Response: 282995
 Conc: 24.93 ng/ml



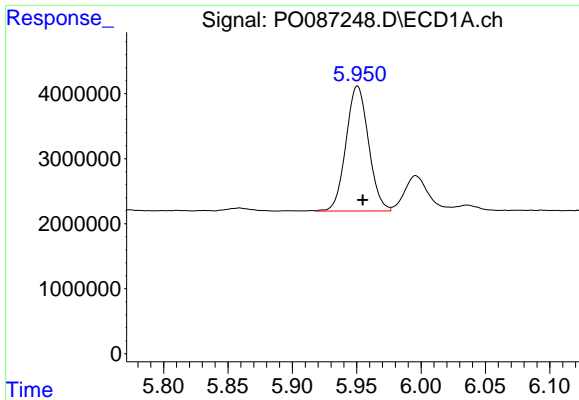
#14 AR-1232-4

R.T.: 5.859 min
 Delta R.T.: -0.005 min
 Response: 632146
 Conc: 23.54 ng/ml



#14 AR-1232-4

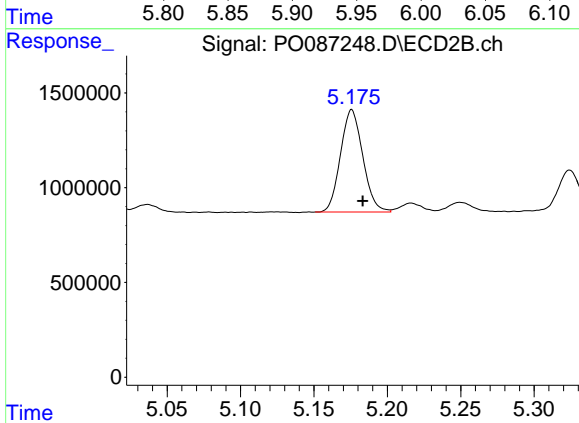
R.T.: 5.004 min
 Delta R.T.: -0.008 min
 Response: 3043110
 Conc: 297.68 ng/ml



#15 AR-1232-5

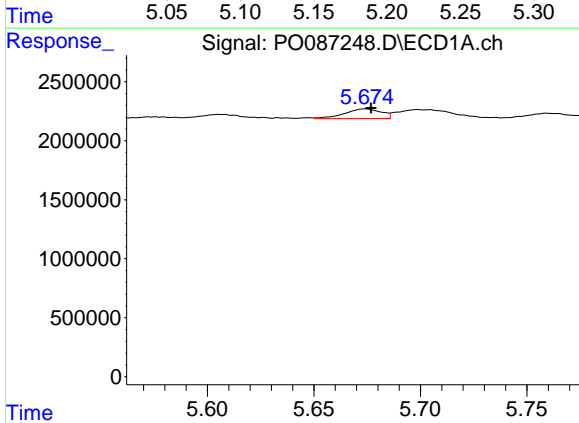
R.T.: 5.951 min
 Delta R.T.: -0.004 min
 Response: 23399603
 Conc: 1052.61 ng/ml

Instrument :
 ECD_O
 ClientSampleId :



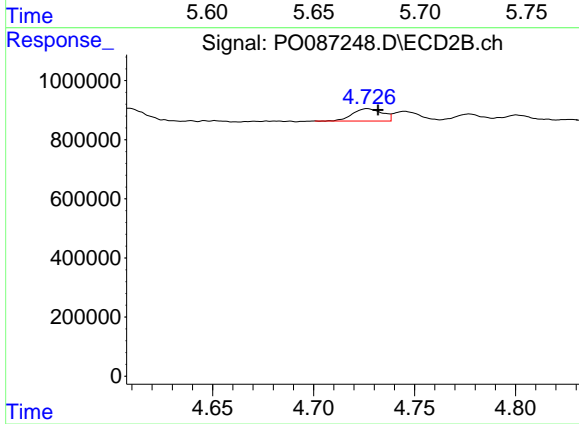
#15 AR-1232-5

R.T.: 5.176 min
 Delta R.T.: -0.007 min
 Response: 5715246
 Conc: 507.07 ng/ml



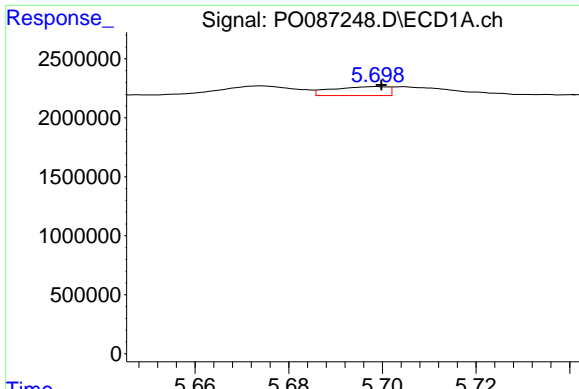
#16 AR-1242-1

R.T.: 5.674 min
 Delta R.T.: -0.003 min
 Response: 995332
 Conc: 15.49 ng/ml



#16 AR-1242-1

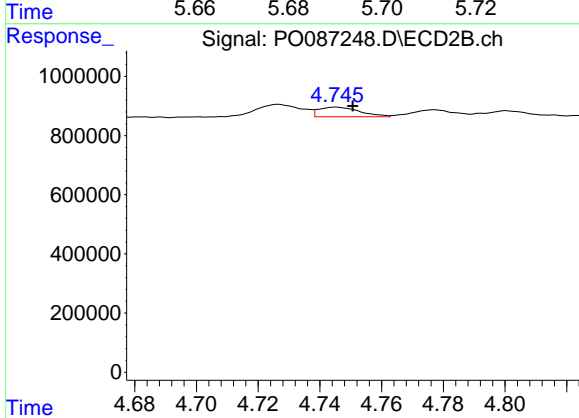
R.T.: 4.727 min
 Delta R.T.: -0.005 min
 Response: 426749
 Conc: 16.12 ng/ml



#17 AR-1242-2

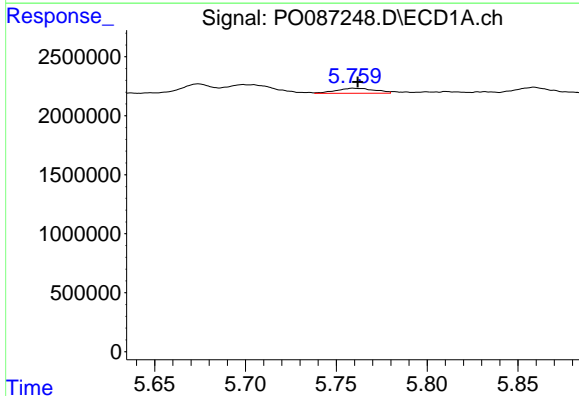
R.T.: 5.699 min
 Delta R.T.: -0.001 min
 Response: 630336
 Conc: 6.90 ng/ml

Instrument :
 ECD_O
 ClientSampleId :



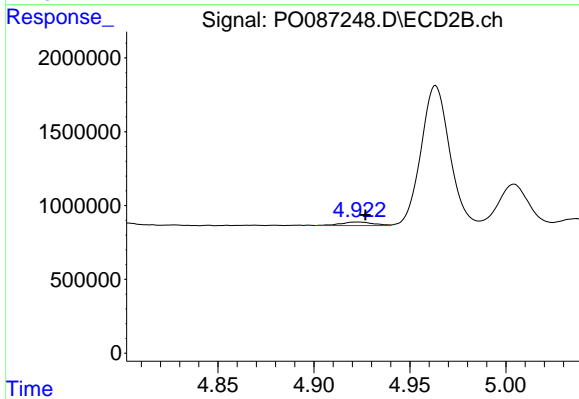
#17 AR-1242-2

R.T.: 4.745 min
 Delta R.T.: -0.006 min
 Response: 302998
 Conc: 8.41 ng/ml



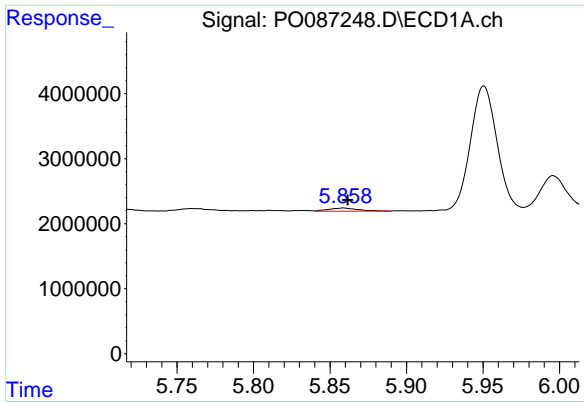
#18 AR-1242-3

R.T.: 5.759 min
 Delta R.T.: -0.003 min
 Response: 640188
 Conc: 10.91 ng/ml



#18 AR-1242-3

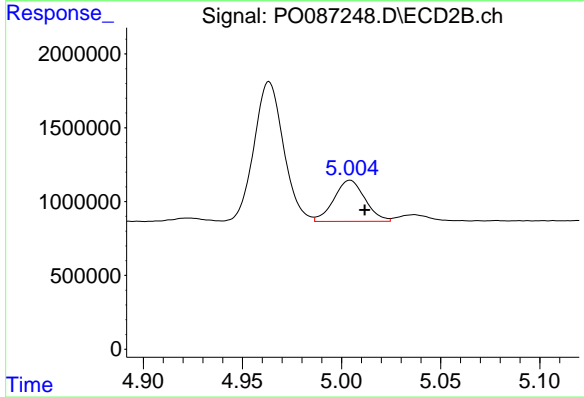
R.T.: 4.923 min
 Delta R.T.: -0.004 min
 Response: 282995
 Conc: 14.16 ng/ml



#19 AR-1242-4

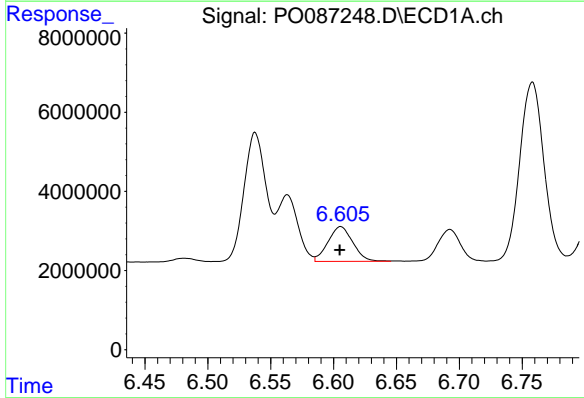
R.T.: 5.859 min
 Delta R.T.: -0.003 min
 Response: 632146
 Conc: 13.57 ng/ml

Instrument :
 ECD_O
 ClientSampleId :



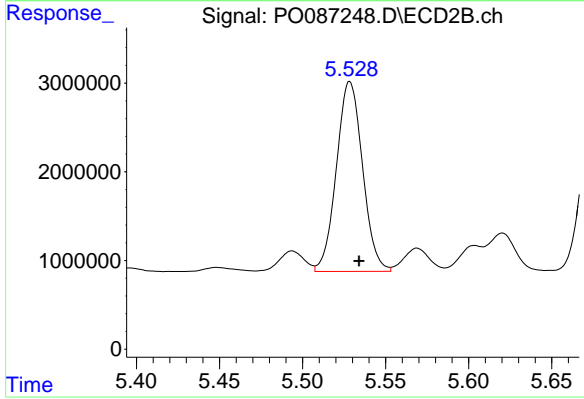
#19 AR-1242-4

R.T.: 5.004 min
 Delta R.T.: -0.007 min
 Response: 3043110
 Conc: 155.69 ng/ml



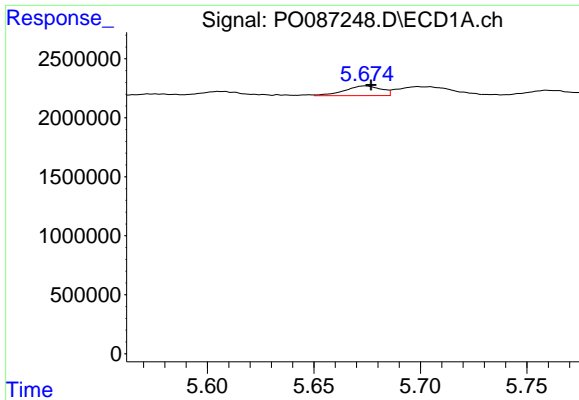
#20 AR-1242-5

R.T.: 6.606 min
 Delta R.T.: 0.000 min
 Response: 12093462
 Conc: 254.88 ng/ml



#20 AR-1242-5

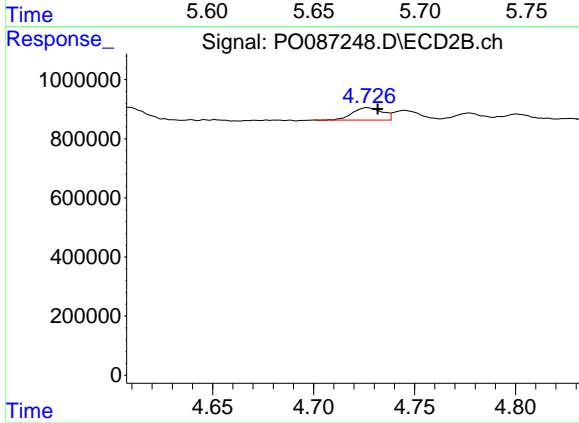
R.T.: 5.528 min
 Delta R.T.: -0.005 min
 Response: 23444333
 Conc: 1004.24 ng/ml



#21 AR-1248-1

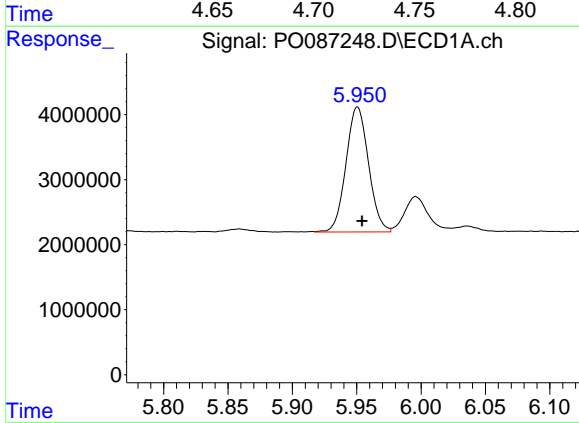
R.T.: 5.674 min
 Delta R.T.: -0.003 min
 Response: 995332
 Conc: 20.52 ng/ml

Instrument :
 ECD_O
 ClientSampleId :



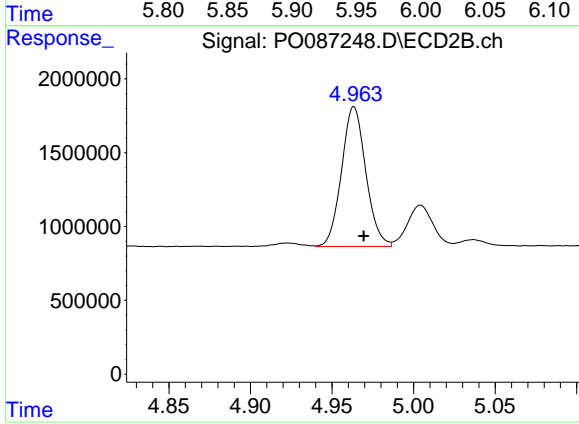
#21 AR-1248-1

R.T.: 4.727 min
 Delta R.T.: -0.005 min
 Response: 426749
 Conc: 21.57 ng/ml



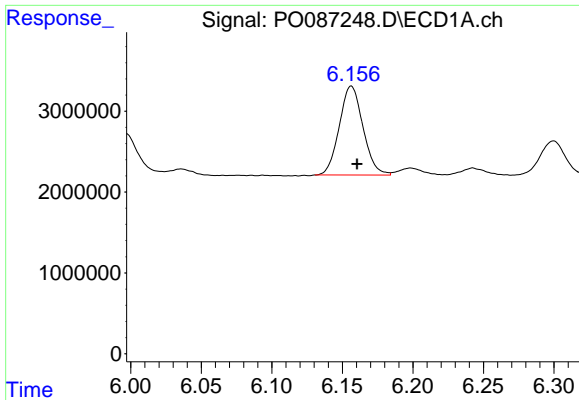
#22 AR-1248-2

R.T.: 5.951 min
 Delta R.T.: -0.003 min
 Response: 23399603
 Conc: 328.46 ng/ml



#22 AR-1248-2

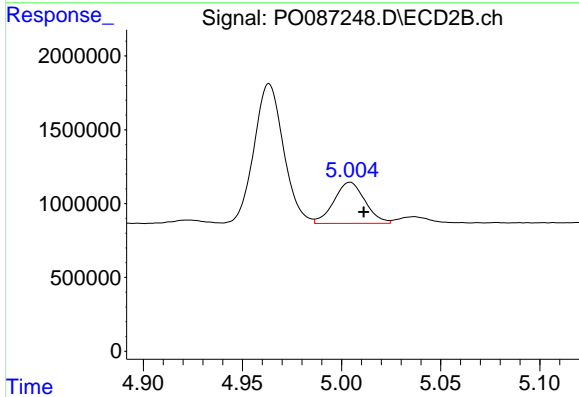
R.T.: 4.963 min
 Delta R.T.: -0.006 min
 Response: 9804926
 Conc: 360.86 ng/ml



#23 AR-1248-3

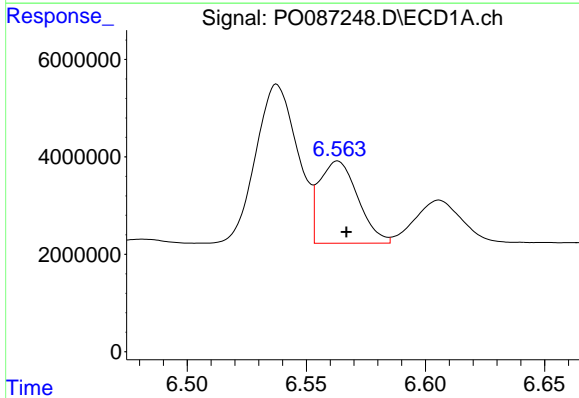
R.T.: 6.156 min
 Delta R.T.: -0.004 min
 Response: 12869834
 Conc: 168.59 ng/ml

Instrument :
 ECD_O
 ClientSampleId :



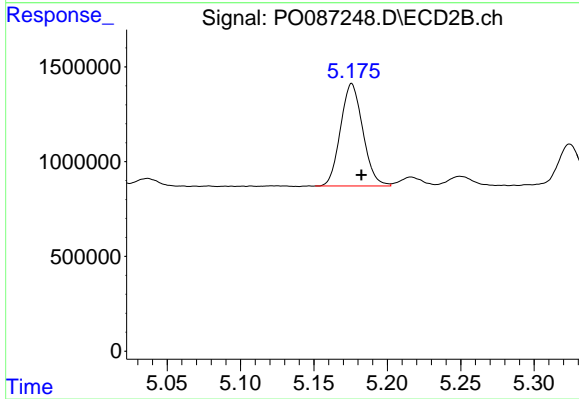
#23 AR-1248-3

R.T.: 5.004 min
 Delta R.T.: -0.007 min
 Response: 3043110
 Conc: 106.48 ng/ml



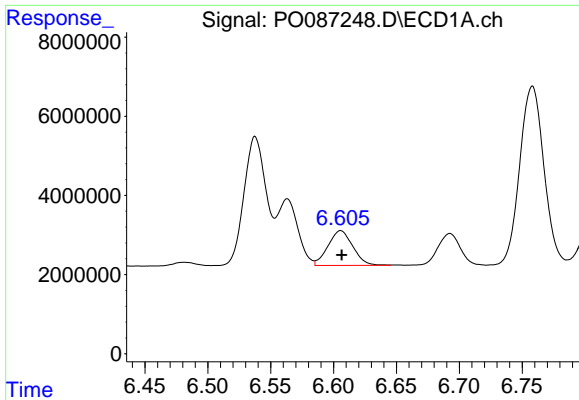
#24 AR-1248-4

R.T.: 6.563 min
 Delta R.T.: -0.004 min
 Response: 19019933
 Conc: 228.45 ng/ml



#24 AR-1248-4

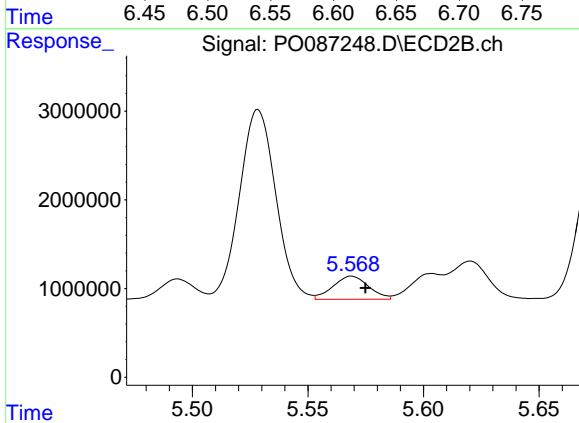
R.T.: 5.176 min
 Delta R.T.: -0.007 min
 Response: 5715246
 Conc: 173.70 ng/ml



#25 AR-1248-5

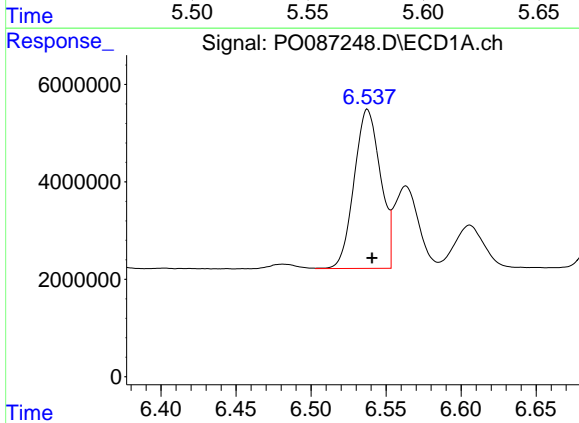
R.T.: 6.606 min
 Delta R.T.: 0.000 min
 Response: 12093462
 Conc: 150.70 ng/ml

Instrument :
 ECD_O
 ClientSampleId :



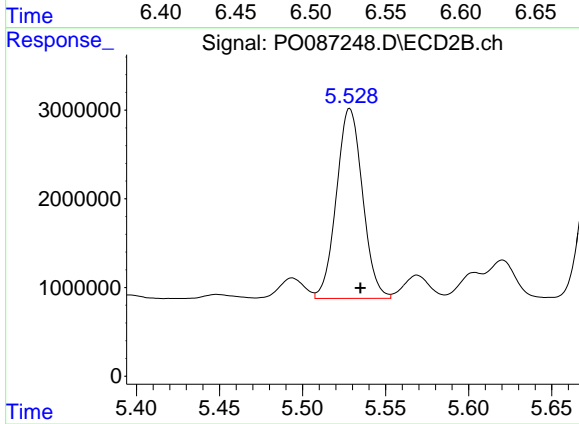
#25 AR-1248-5

R.T.: 5.569 min
 Delta R.T.: -0.006 min
 Response: 2797037
 Conc: 87.51 ng/ml



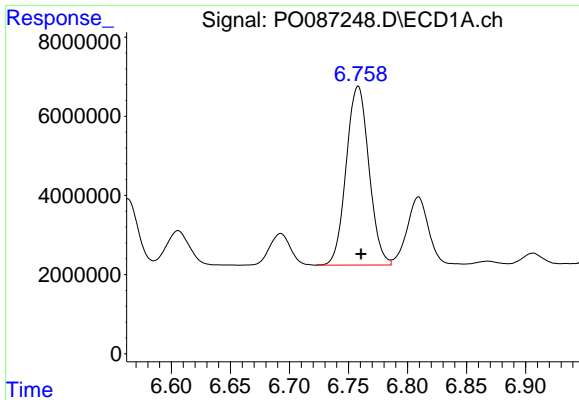
#26 AR-1254-1

R.T.: 6.538 min
 Delta R.T.: -0.003 min
 Response: 39934859
 Conc: 458.04 ng/ml



#26 AR-1254-1

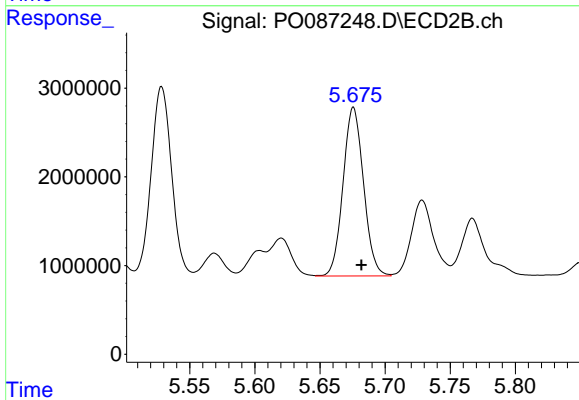
R.T.: 5.528 min
 Delta R.T.: -0.006 min
 Response: 23444333
 Conc: 484.41 ng/ml



#27 AR-1254-2

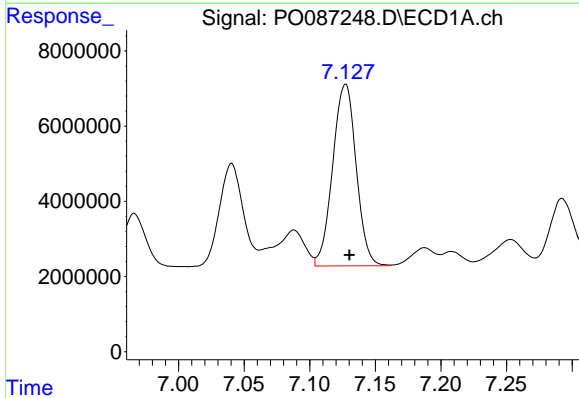
R.T.: 6.758 min
Delta R.T.: -0.003 min
Response: 60655343
Conc: 464.46 ng/ml

Instrument :
ECD_O
ClientSampleId :



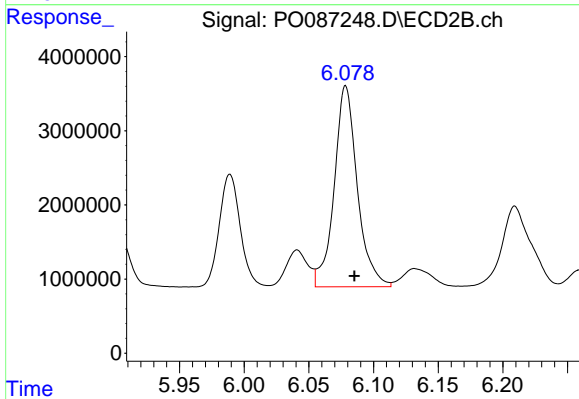
#27 AR-1254-2

R.T.: 5.676 min
Delta R.T.: -0.006 min
Response: 20838630
Conc: 488.58 ng/ml



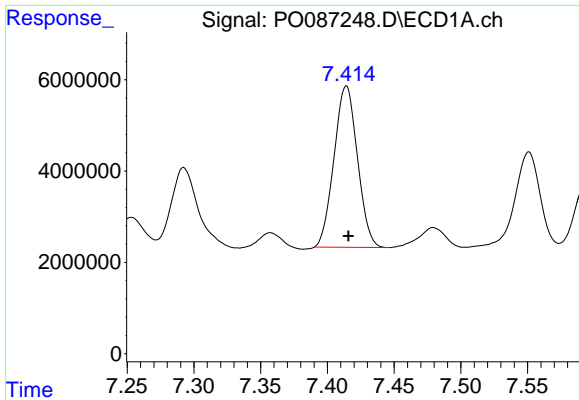
#28 AR-1254-3

R.T.: 7.127 min
Delta R.T.: -0.003 min
Response: 60292733
Conc: 462.12 ng/ml



#28 AR-1254-3

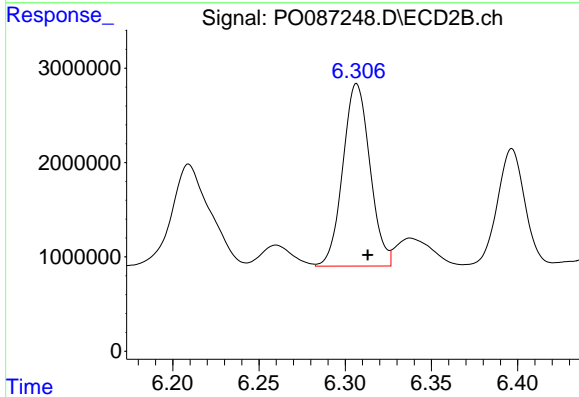
R.T.: 6.078 min
Delta R.T.: -0.007 min
Response: 33736575
Conc: 493.64 ng/ml



#29 AR-1254-4

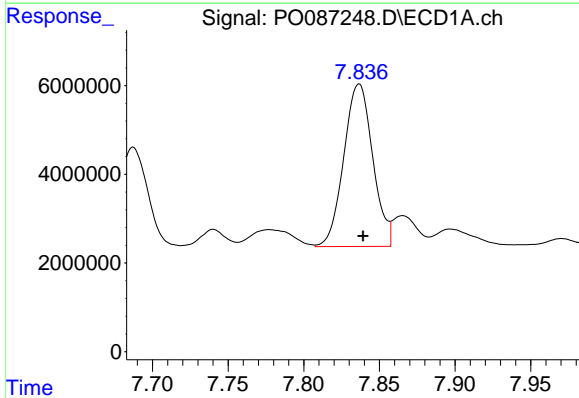
R.T.: 7.414 min
 Delta R.T.: -0.001 min
 Response: 43177552
 Conc: 451.91 ng/ml

Instrument :
 ECD_O
 ClientSampleId :



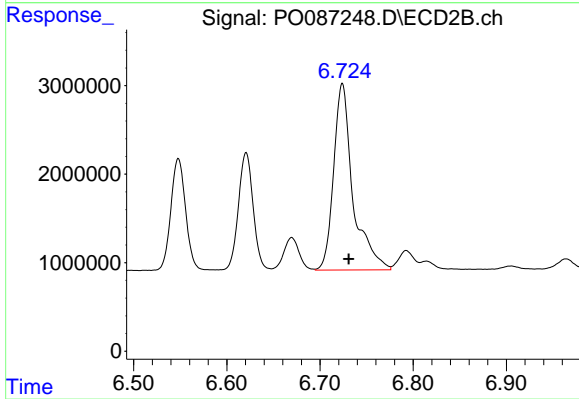
#29 AR-1254-4

R.T.: 6.307 min
 Delta R.T.: -0.006 min
 Response: 21119967
 Conc: 500.61 ng/ml



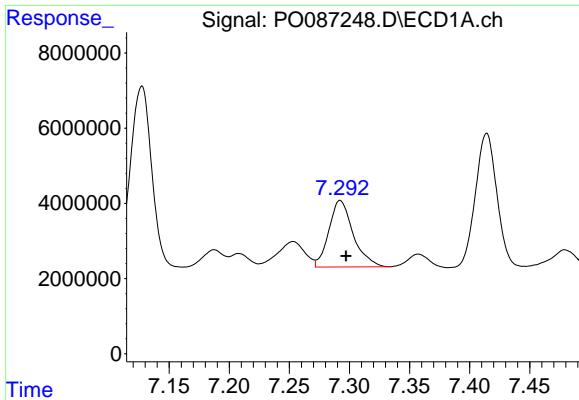
#30 AR-1254-5

R.T.: 7.837 min
 Delta R.T.: -0.003 min
 Response: 48814671
 Conc: 467.23 ng/ml



#30 AR-1254-5

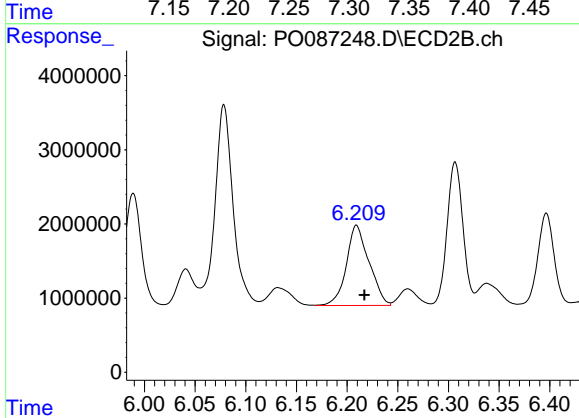
R.T.: 6.724 min
 Delta R.T.: -0.007 min
 Response: 30322100
 Conc: 499.30 ng/ml



#31 AR-1260-1

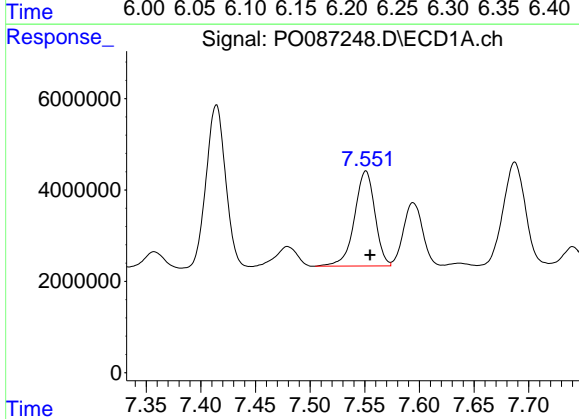
R.T.: 7.292 min
 Delta R.T.: -0.005 min
 Response: 24936659
 Conc: 247.45 ng/ml

Instrument :
 ECD_O
 ClientSampleId :



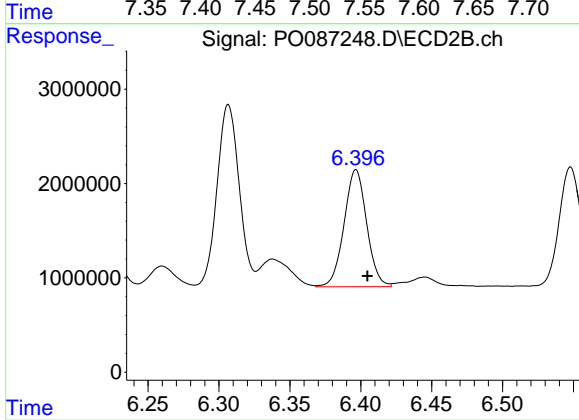
#31 AR-1260-1

R.T.: 6.209 min
 Delta R.T.: -0.008 min
 Response: 16888716
 Conc: 360.55 ng/ml



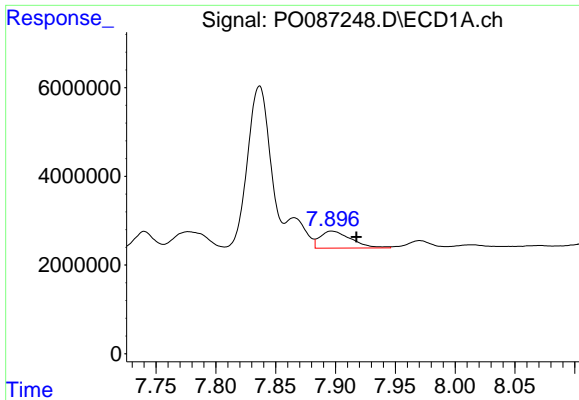
#32 AR-1260-2

R.T.: 7.551 min
 Delta R.T.: -0.004 min
 Response: 27069903
 Conc: 229.69 ng/ml



#32 AR-1260-2

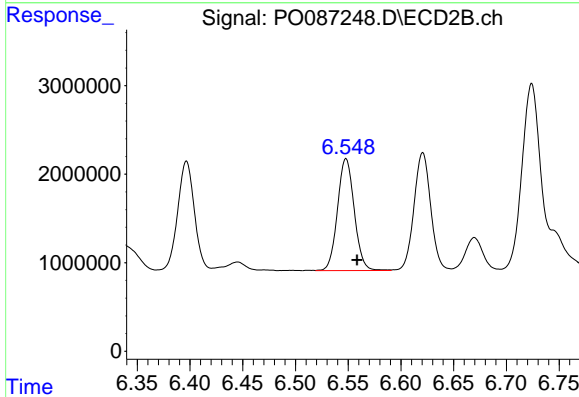
R.T.: 6.397 min
 Delta R.T.: -0.008 min
 Response: 13780634
 Conc: 246.02 ng/ml



#33 AR-1260-3

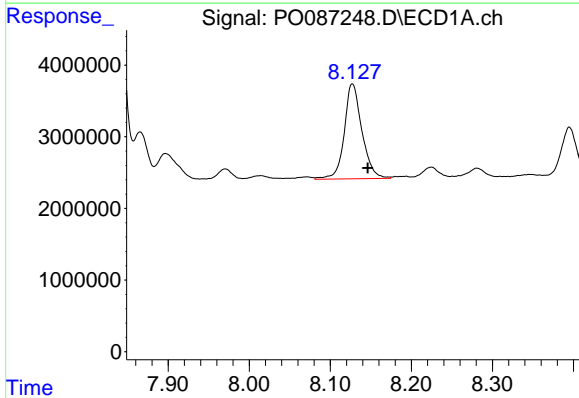
R.T.: 7.897 min
 Delta R.T.: -0.021 min
 Response: 6944556
 Conc: 81.92 ng/ml

Instrument :
 ECD_O
 ClientSampleId :



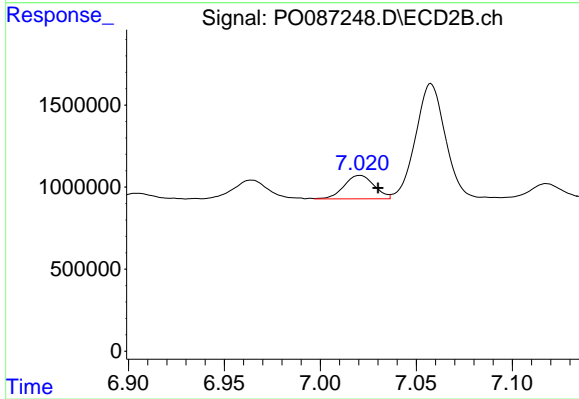
#33 AR-1260-3

R.T.: 6.548 min
 Delta R.T.: -0.011 min
 Response: 13975783
 Conc: 262.64 ng/ml



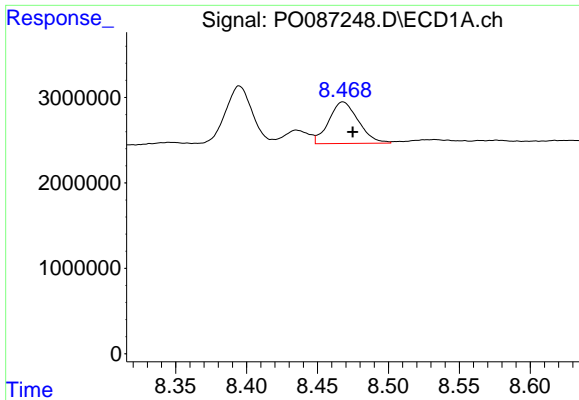
#34 AR-1260-4

R.T.: 8.127 min
 Delta R.T.: -0.019 min
 Response: 20047734
 Conc: 196.85 ng/ml



#34 AR-1260-4

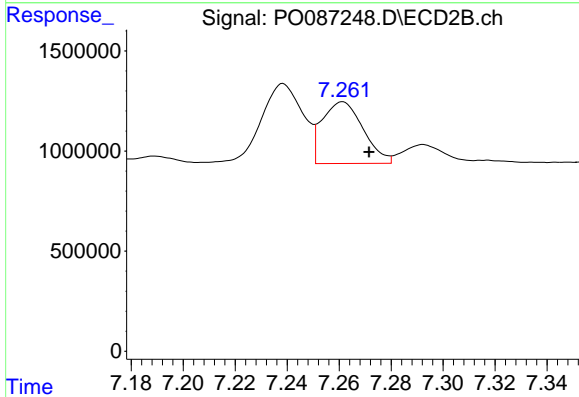
R.T.: 7.021 min
 Delta R.T.: -0.009 min
 Response: 1559155
 Conc: 38.69 ng/ml



#35 AR-1260-5

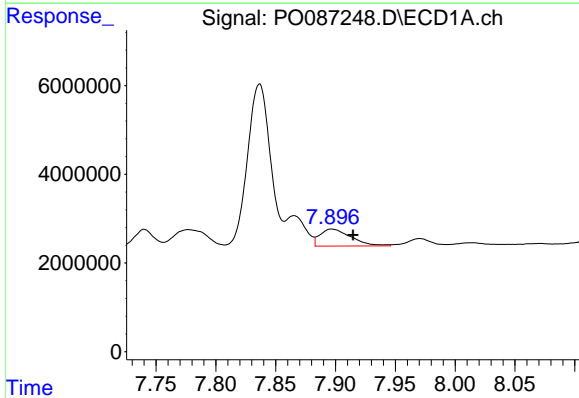
R.T.: 8.468 min
 Delta R.T.: -0.007 min
 Response: 7032422
 Conc: 38.69 ng/ml

Instrument :
 ECD_O
 ClientSampleId :



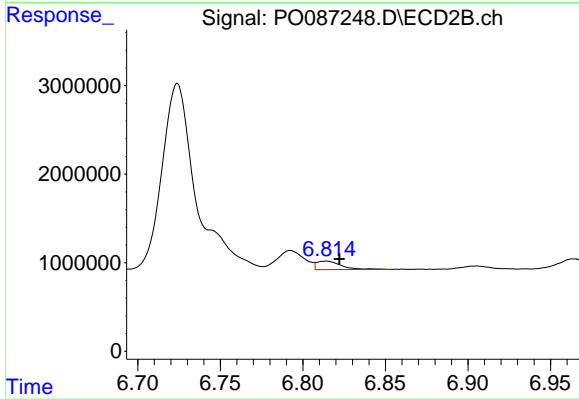
#35 AR-1260-5

R.T.: 7.261 min
 Delta R.T.: -0.010 min
 Response: 3377452
 Conc: 36.00 ng/ml



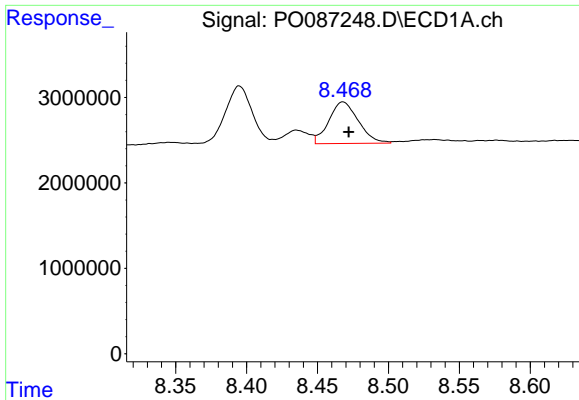
#36 AR-1262-1

R.T.: 7.897 min
 Delta R.T.: -0.018 min
 Response: 6944556
 Conc: 56.47 ng/ml



#36 AR-1262-1

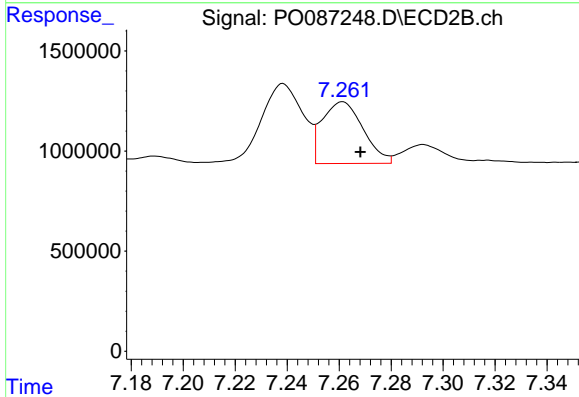
R.T.: 6.814 min
 Delta R.T.: -0.008 min
 Response: 1017934
 Conc: 42.07 ng/ml



#37 AR-1262-2

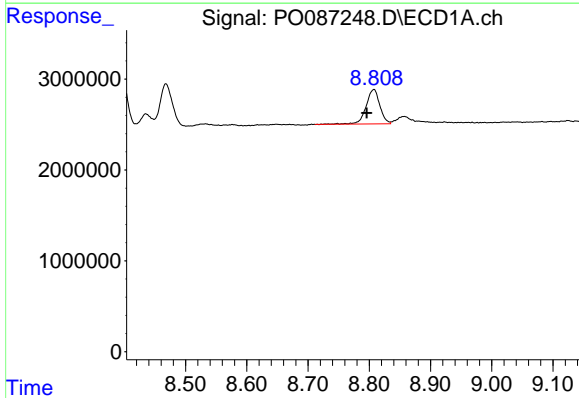
R.T.: 8.468 min
 Delta R.T.: -0.004 min
 Response: 7032422
 Conc: 34.26 ng/ml

Instrument :
 ECD_O
 ClientSampleId :



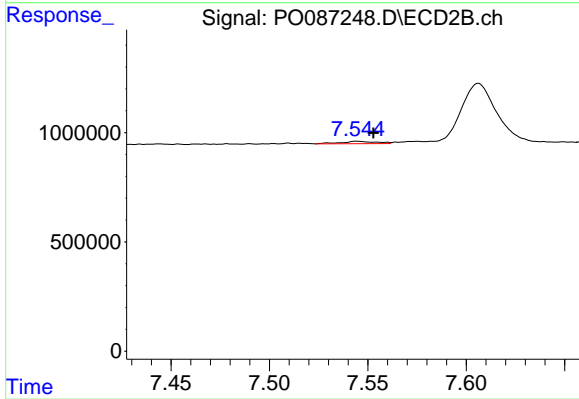
#37 AR-1262-2

R.T.: 7.261 min
 Delta R.T.: -0.007 min
 Response: 3377452
 Conc: 33.43 ng/ml



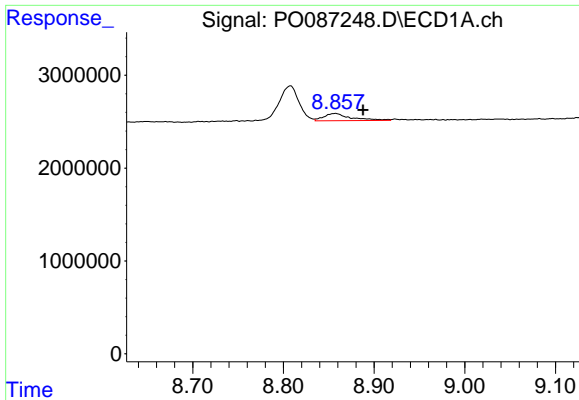
#38 AR-1262-3

R.T.: 8.808 min
 Delta R.T.: 0.012 min
 Response: 5925914
 Conc: 41.05 ng/ml



#38 AR-1262-3

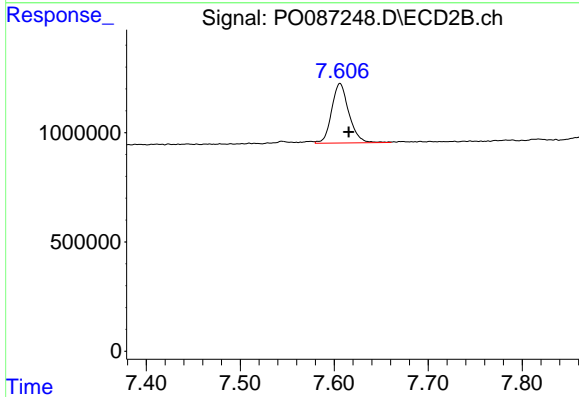
R.T.: 7.544 min
 Delta R.T.: -0.008 min
 Response: 133451
 Conc: 3.30 ng/ml



#39 AR-1262-4

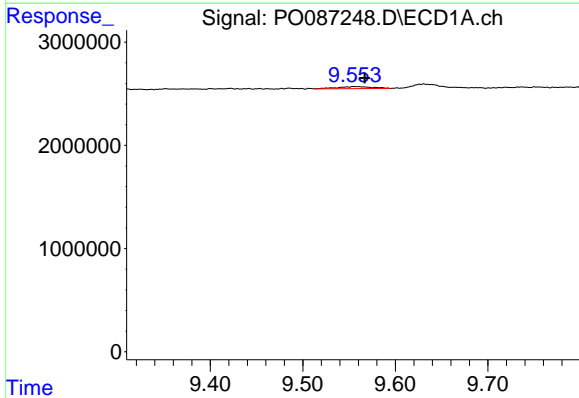
R.T.: 8.857 min
 Delta R.T.: -0.031 min
 Response: 1642842
 Conc: 23.27 ng/ml

Instrument :
 ECD_O
 ClientSampleId :



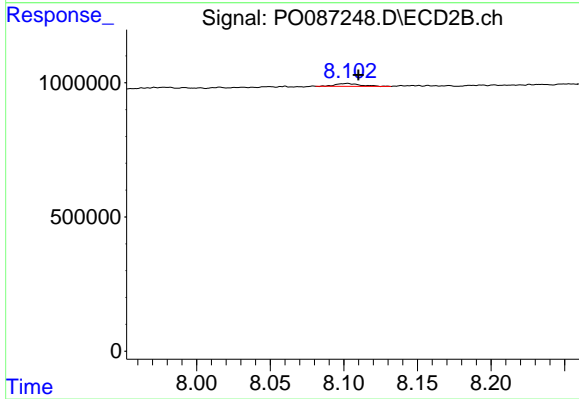
#39 AR-1262-4

R.T.: 7.606 min
 Delta R.T.: -0.009 min
 Response: 3487191
 Conc: 46.59 ng/ml



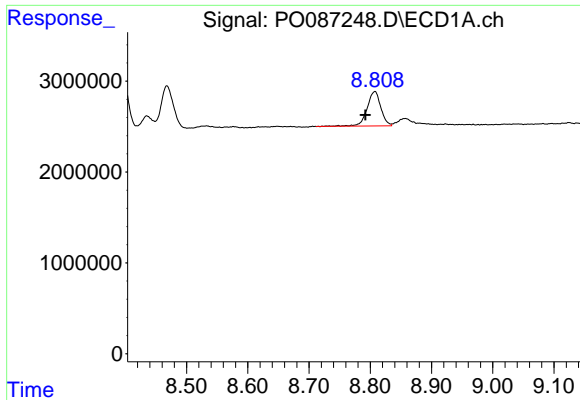
#40 AR-1262-5

R.T.: 9.555 min
 Delta R.T.: -0.012 min
 Response: 532181
 Conc: 6.89 ng/ml



#40 AR-1262-5

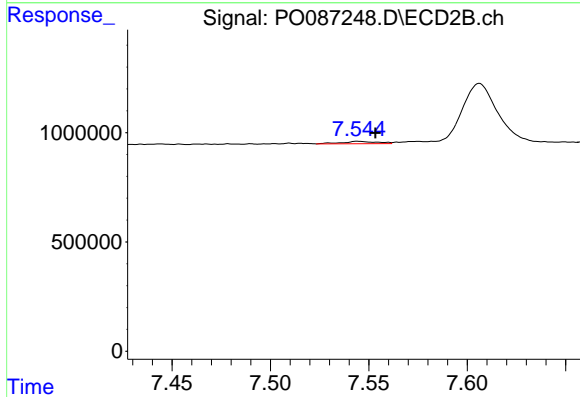
R.T.: 8.102 min
 Delta R.T.: -0.008 min
 Response: 119211
 Conc: 3.47 ng/ml



#41 AR-1268-1

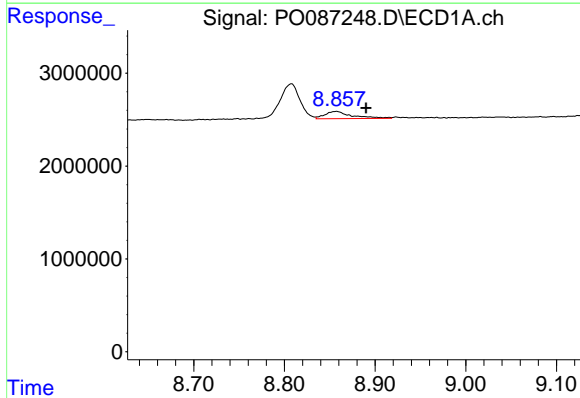
R.T.: 8.808 min
 Delta R.T.: 0.015 min
 Response: 5925914
 Conc: 23.05 ng/ml

Instrument :
 ECD_O
 ClientSampleId :



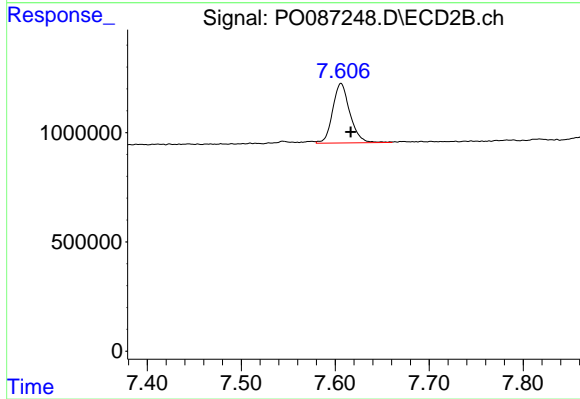
#41 AR-1268-1

R.T.: 7.544 min
 Delta R.T.: -0.009 min
 Response: 133451
 Conc: 1.12 ng/ml



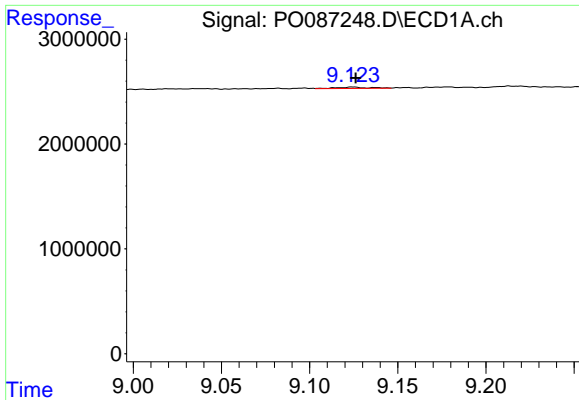
#42 AR-1268-2

R.T.: 8.857 min
 Delta R.T.: -0.033 min
 Response: 1642842
 Conc: 6.94 ng/ml



#42 AR-1268-2

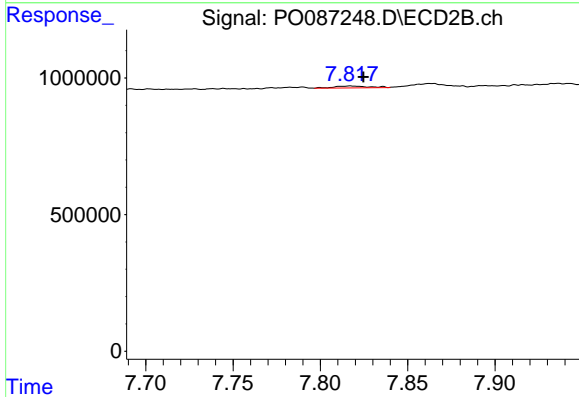
R.T.: 7.606 min
 Delta R.T.: -0.010 min
 Response: 3487191
 Conc: 32.03 ng/ml



#43 AR-1268-3

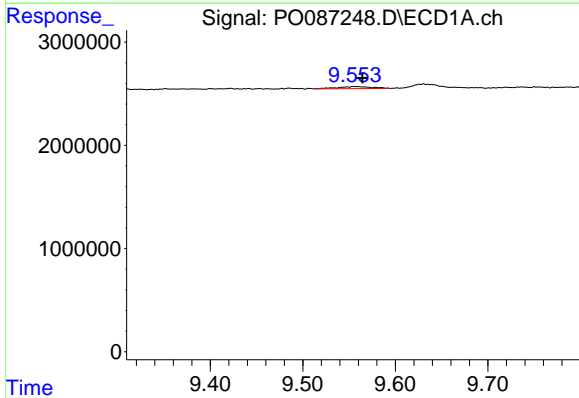
R.T.: 9.125 min
 Delta R.T.: -0.001 min
 Response: 175036
 Conc: 0.87 ng/ml

Instrument :
 ECD_O
 ClientSampleId :



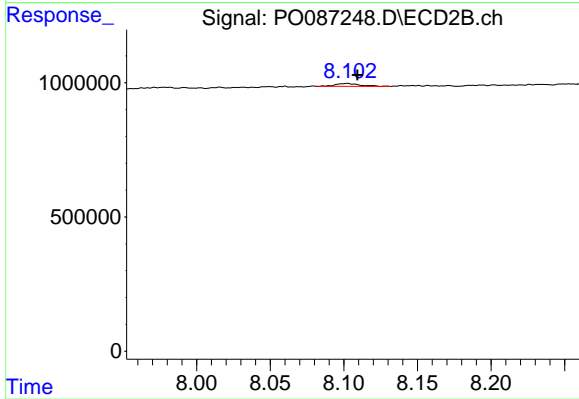
#43 AR-1268-3

R.T.: 7.817 min
 Delta R.T.: -0.007 min
 Response: 91762
 Conc: 1.00 ng/ml



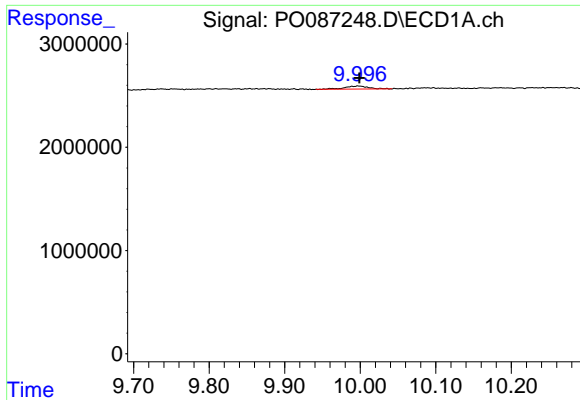
#44 AR-1268-4

R.T.: 9.555 min
 Delta R.T.: -0.009 min
 Response: 532181
 Conc: 5.90 ng/ml



#44 AR-1268-4

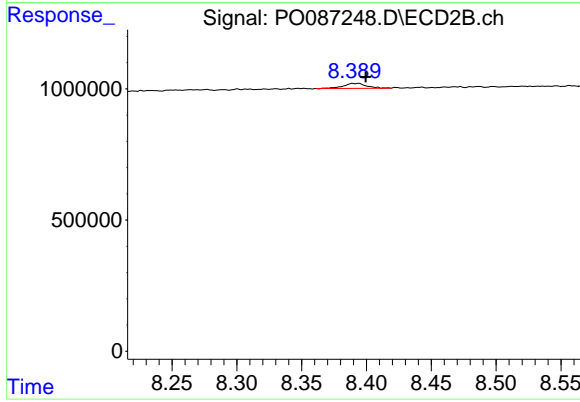
R.T.: 8.102 min
 Delta R.T.: -0.007 min
 Response: 119211
 Conc: 3.00 ng/ml



#45 AR-1268-5

R.T.: 9.997 min
 Delta R.T.: -0.002 min
 Response: 644217
 Conc: 1.01 ng/ml

Instrument :
 ECD_O
 ClientSampleId :



#45 AR-1268-5

R.T.: 8.393 min
 Delta R.T.: -0.006 min
 Response: 233820
 Conc: 0.81 ng/ml