

Data Path : Z:\pestpcbsrv\HPCHEM1\ECD\_0\Data\P0062222\  
 Data File : P0087284.D  
 Signal(s) : Signal #1: ECD1A.ch Signal #2: ECD2B.ch  
 Acq On : 22 Jun 2022 22:42  
 Operator : YP/AJ  
 Sample : PB145761BS  
 Misc :  
 ALS Vial : 31 Sample Multiplier: 1

Instrument :  
 ECD\_0  
 ClientSampleId :

Integration File signal 1: autoint1.e  
 Integration File signal 2: autoint2.e  
 Quant Time: Jun 23 07:41:16 2022  
 Quant Method : Z:\pestpcbsrv\HPCHEM1\ECD\_0\methods\P0060922.M  
 Quant Title : GC EXTRACTABLES  
 QLast Update : Fri Jun 10 04:33:49 2022  
 Response via : Initial Calibration  
 Integrator: ChemStation

Volume Inj. : 2 µl  
 Signal #1 Phase : ZB-MR1 Signal #2 Phase: ZB-MR2  
 Signal #1 Info : 30Mx0.32mmx 0.50µ Signal #2 Info : 30M x 0.32mm x 0.25µm

Compound	RT#1	RT#2	Resp#1	Resp#2	ng/ml	ng/ml
System Monitoring Compounds						
1) SA Tetrachlo...	4.492	3.640	37888432	20061391	16.212	17.818
2) SA Decachlor...	10.348	8.643	32286229	13498083	17.544	17.168
Target Compounds						
3) L1 AR-1016-1	5.674	4.726	28177276	12778976	336.634	379.520
4) L1 AR-1016-2	5.696	4.746	39727535	17504385	337.855	376.304
5) L1 AR-1016-3	5.760	4.921	25547898	9484024	339.404	370.205
6) L1 AR-1016-4	5.860	4.964	20697635	7439558	345.429	364.925
7) L1 AR-1016-5	6.158	5.176	19689052	9426117	335.004	368.840
8) L2 AR-1221-1	4.700	3.854	3443398	1527616	122.995	115.355
9) L2 AR-1221-2	4.789	3.940	3732703	2160790	176.782	217.654
10) L2 AR-1221-3	4.867	4.016	15576918	7700366	241.151	264.645
11) L3 AR-1232-1	4.867	4.016	15576918	7700366	264.888	288.634
12) L3 AR-1232-2	5.207	4.746	21514608	17504385	743.333	807.173
13) L3 AR-1232-3	5.696	4.921	39727535	9484024	739.896	835.353
14) L3 AR-1232-4	5.860	5.005	20697635	9181796	770.657	898.165
15) L3 AR-1232-5	5.951	5.176	18773361	9426117	844.500	836.309
16) L4 AR-1242-1	5.674	4.726	28177276	12778976	438.392	482.811
17) L4 AR-1242-2	5.696	4.746	39727535	17504385	434.781	485.952
18) L4 AR-1242-3	5.760	4.921	25547898	9484024	435.258	474.608
19) L4 AR-1242-4	5.860	5.005	20697635	9181796	444.273	469.751
20) L4 AR-1242-5	6.603	5.528	2630035	7447478	55.429	319.014 #
21) L5 AR-1248-1	5.674	4.726	28177276	12778976	580.773	645.830
22) L5 AR-1248-2	5.951	4.964	18773361	7439558	263.522	273.806
23) L5 AR-1248-3	6.158	5.005	19689052	9181796	257.926	321.286
24) L5 AR-1248-4	6.562	5.176	2700315	9426117	32.434	286.482 #
25) L5 AR-1248-5	6.603	5.568	2630035	1190723	32.773	37.252
26) L6 AR-1254-1	6.537	5.528	14615676	7447478	167.637	153.880
27) L6 AR-1254-2	6.757	5.675	15314888	7187731	117.271	168.522 #
28) L6 AR-1254-3	7.127	6.094	7631282	12485033	58.490	182.685 #
29) L6 AR-1254-4	7.414	6.306	4779796	1476516	50.027	34.998 #
30) L6 AR-1254-5	7.835	6.722	44435240	23857032	425.315	392.839
31) L7 AR-1260-1	7.292	6.208	32031266	17788990	317.854	379.775
32) L7 AR-1260-2	7.550	6.396	37465134	21551639	317.895	384.756
33) L7 AR-1260-3	7.913	6.548	24004623	19520594	283.163	366.840 #
34) L7 AR-1260-4	8.141	7.020	31059087	13882211	304.966	344.460
35) L7 AR-1260-5	8.469	7.261	56308161	31785228	309.816	338.842
36) L8 AR-1262-1	7.913	6.814	24004623	7650262	195.211	316.213 #
37) L8 AR-1262-2	8.469	7.261	56308161	31785228	274.332	314.630
38) L8 AR-1262-3	8.803	7.544	38376616	6212384	265.819	153.392 #
39) L8 AR-1262-4	8.863	7.607	21756358	22898550	308.136	305.900
40) L8 AR-1262-5	9.564	8.101	14446972	6482056	186.946	188.423
41) L9 AR-1268-1	8.803	7.544	38376616	6212384	149.285	52.011 #

Data Path : Z:\pestpcbsrv\HPCHEM1\ECD\_0\Data\P0062222\  
 Data File : P0087284.D  
 Signal(s) : Signal #1: ECD1A.ch Signal #2: ECD2B.ch  
 Acq On : 22 Jun 2022 22:42  
 Operator : YP/AJ  
 Sample : PB145761BS  
 Misc :  
 ALS Vial : 31 Sample Multiplier: 1

Instrument :  
 ECD\_0  
 ClientSampleId :

Integration File signal 1: autoint1.e  
 Integration File signal 2: autoint2.e  
 Quant Time: Jun 23 07:41:16 2022  
 Quant Method : Z:\pestpcbsrv\HPCHEM1\ECD\_0\methods\P0060922.M  
 Quant Title : GC EXTRACTABLES  
 QLast Update : Fri Jun 10 04:33:49 2022  
 Response via : Initial Calibration  
 Integrator: ChemStation

Volume Inj. : 2 µl  
 Signal #1 Phase : ZB-MR1 Signal #2 Phase: ZB-MR2  
 Signal #1 Info : 30Mx0.32mmx 0.50µ Signal #2 Info : 30M x 0.32mm x 0.25µm

	Compound	RT#1	RT#2	Resp#1	Resp#2	ng/ml	ng/ml
42)	L9 AR-1268-2	8.863	7.607	21756358	22898550	91.891	210.304 #
43)	L9 AR-1268-3	9.124	7.816	1550676	572912	7.746	6.237
44)	L9 AR-1268-4	9.564	8.101	14446972	6482056	160.252	163.133
45)	L9 AR-1268-5	9.995	8.390	4974664	2121277	7.776	7.373

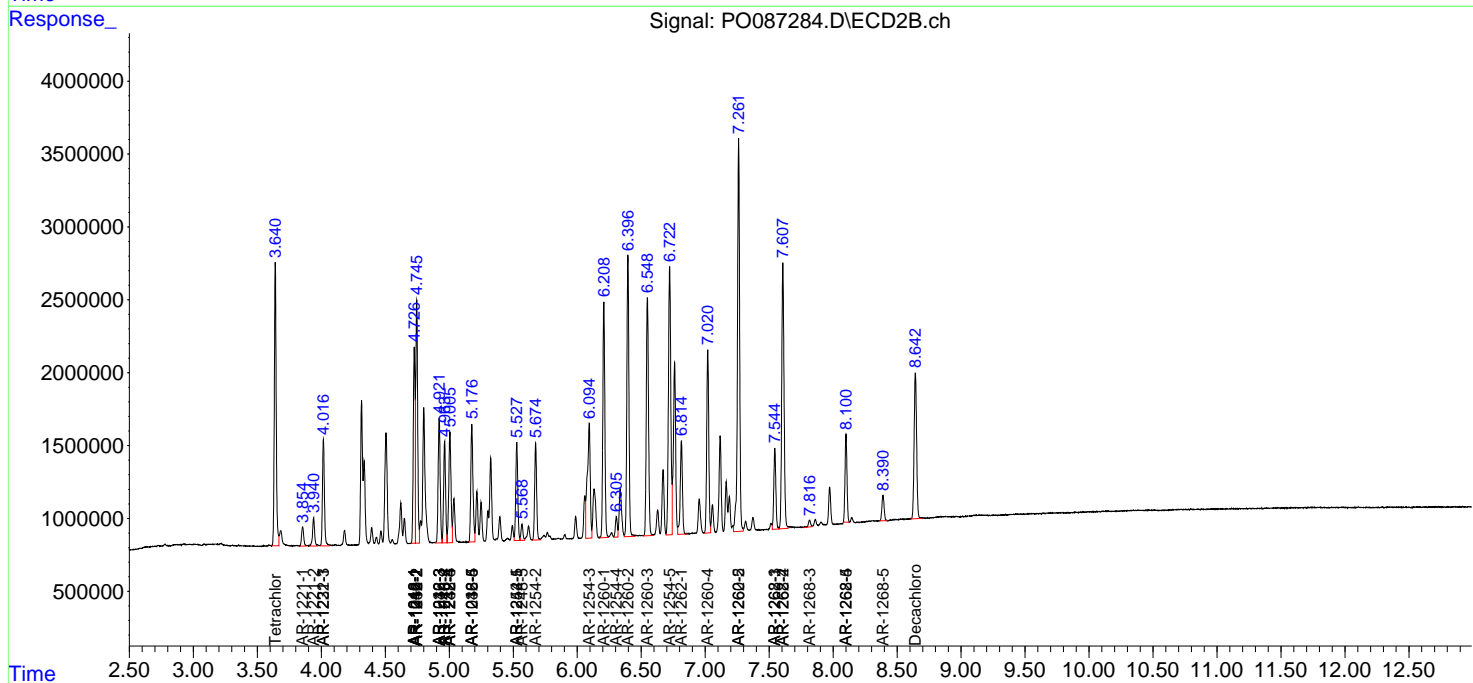
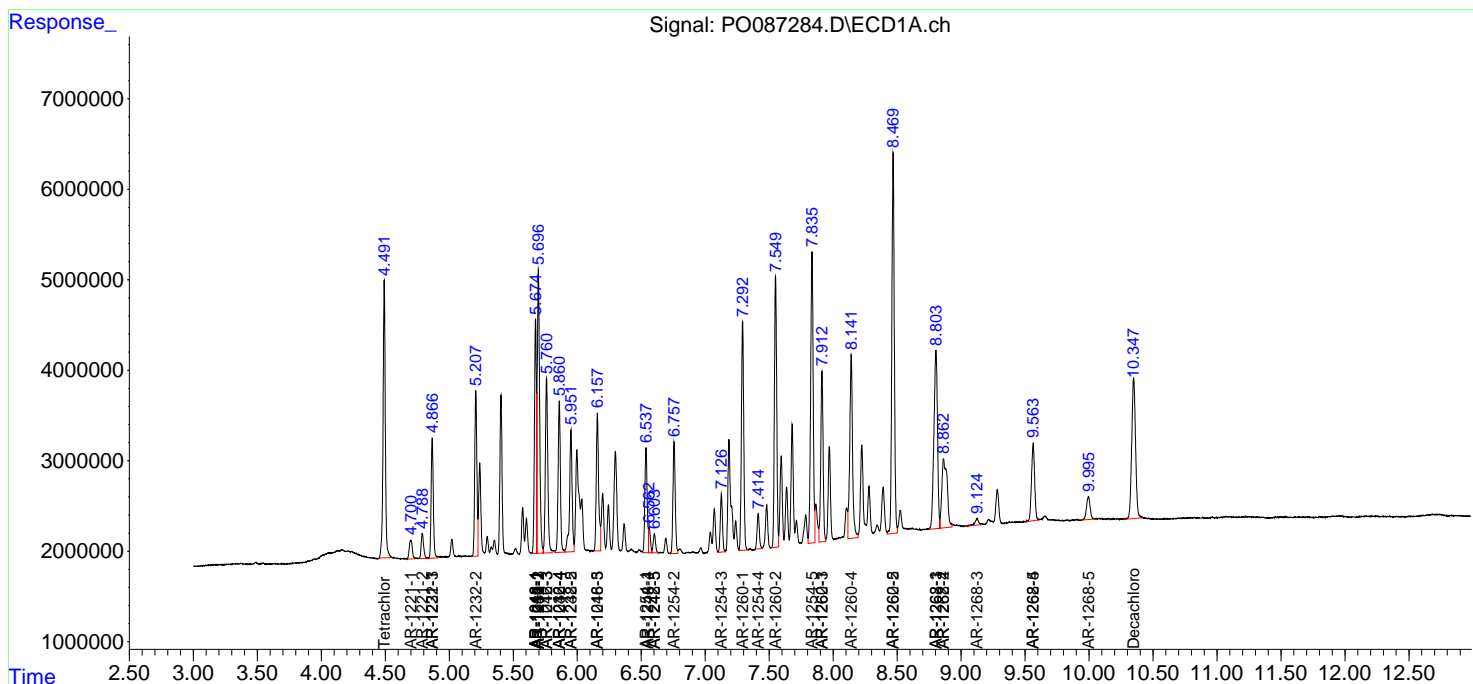
(f)=RT Delta > 1/2 Window (#)=Amounts differ by > 25% (m)=manual int.

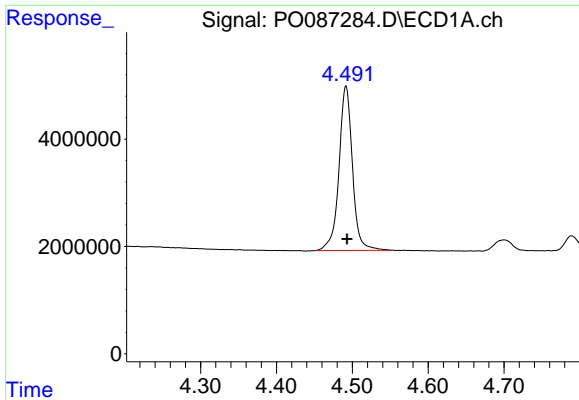
Data Path : Z:\pestpcbsrv\HPCHEM1\ECD\_O\Data\PO062222\  
 Data File : PO087284.D  
 Signal(s) : Signal #1: ECD1A.ch Signal #2: ECD2B.ch  
 Acq On : 22 Jun 2022 22:42  
 Operator : YP/AJ  
 Sample : PB145761BS  
 Misc :  
 ALS Vial : 31 Sample Multiplier: 1

Instrument :  
 ECD\_O  
 ClientSampleId :

Integration File signal 1: autoint1.e  
 Integration File signal 2: autoint2.e  
 Quant Time: Jun 23 07:41:16 2022  
 Quant Method : Z:\pestpcbsrv\HPCHEM1\ECD\_O\methods\PO060922.M  
 Quant Title : GC EXTRACTABLES  
 QLast Update : Fri Jun 10 04:33:49 2022  
 Response via : Initial Calibration  
 Integrator: ChemStation

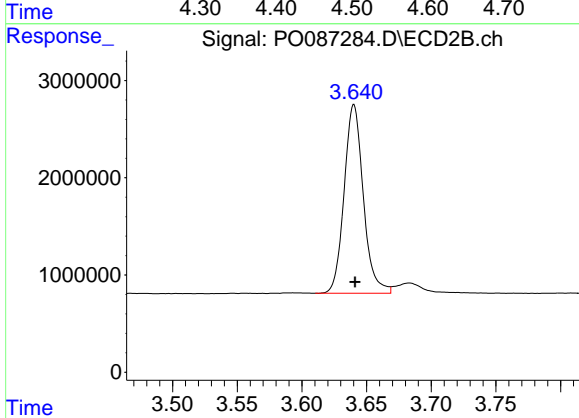
Volume Inj. : 2 µl  
 Signal #1 Phase : ZB-MR1 Signal #2 Phase: ZB-MR2  
 Signal #1 Info : 30Mx0.32mmx 0.50µ Signal #2 Info : 30M x 0.32mm x 0.25µm



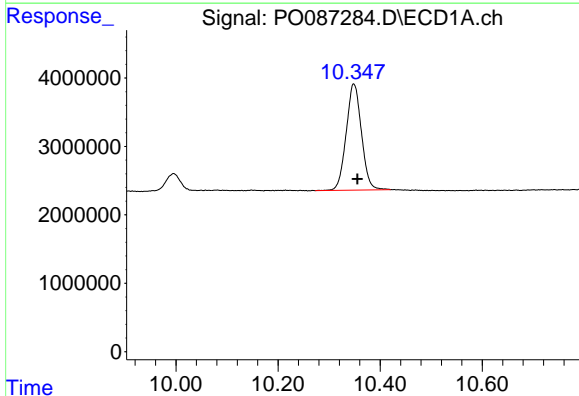


#1 Tetrachloro-m-xylene  
 R.T.: 4.492 min  
 Delta R.T.: -0.001 min  
 Response: 37888432  
 Conc: 16.21 ng/ml

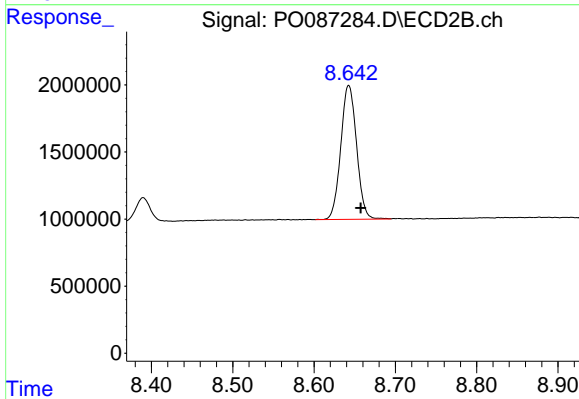
Instrument :  
 ECD\_O  
 ClientSampleId :



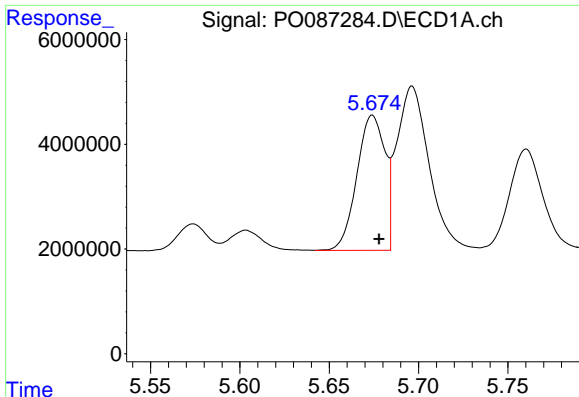
#1 Tetrachloro-m-xylene  
 R.T.: 3.640 min  
 Delta R.T.: 0.000 min  
 Response: 20061391  
 Conc: 17.82 ng/ml



#2 Decachlorobiphenyl  
 R.T.: 10.348 min  
 Delta R.T.: -0.008 min  
 Response: 32286229  
 Conc: 17.54 ng/ml



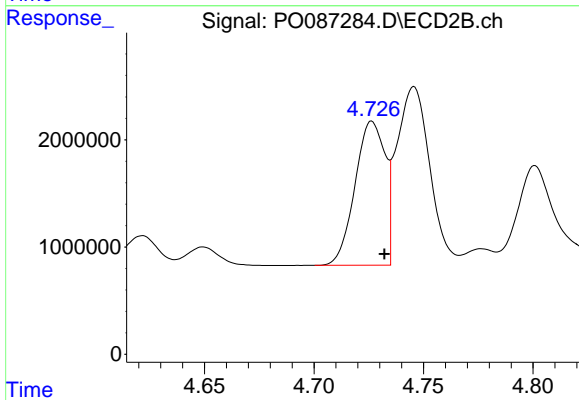
#2 Decachlorobiphenyl  
 R.T.: 8.643 min  
 Delta R.T.: -0.015 min  
 Response: 13498083  
 Conc: 17.17 ng/ml



#3 AR-1016-1

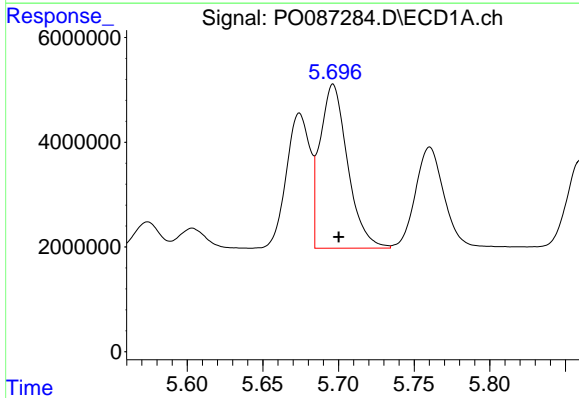
R.T.: 5.674 min  
 Delta R.T.: -0.004 min  
 Response: 28177276  
 Conc: 336.63 ng/ml

Instrument :  
 ECD\_O  
 ClientSampleId :



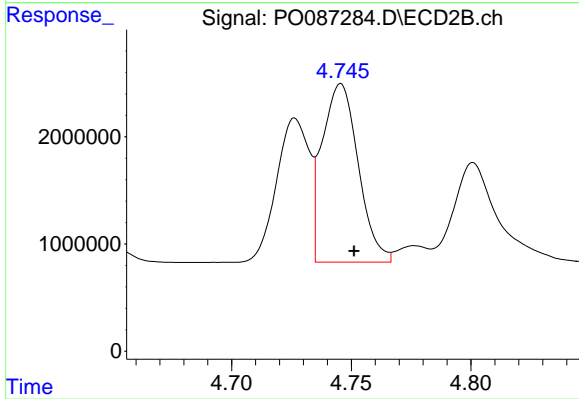
#3 AR-1016-1

R.T.: 4.726 min  
 Delta R.T.: -0.006 min  
 Response: 12778976  
 Conc: 379.52 ng/ml



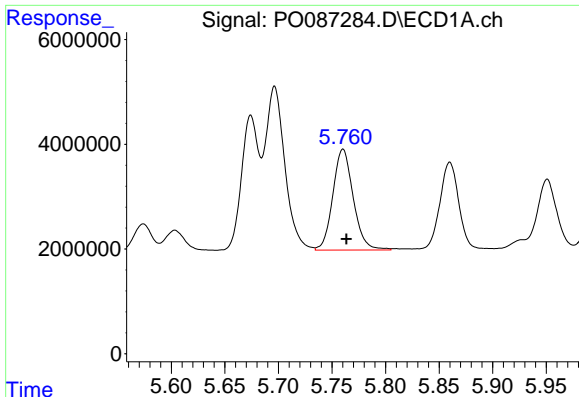
#4 AR-1016-2

R.T.: 5.696 min  
 Delta R.T.: -0.004 min  
 Response: 39727535  
 Conc: 337.86 ng/ml



#4 AR-1016-2

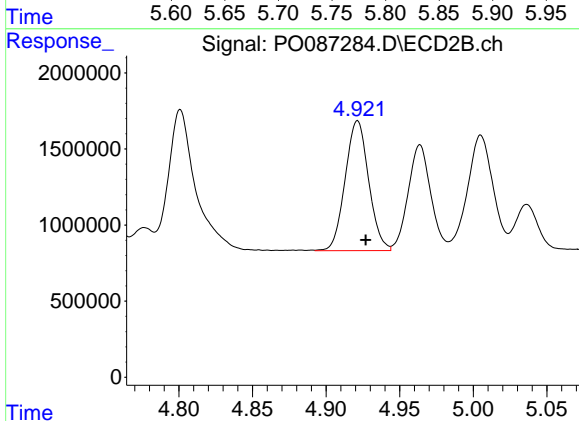
R.T.: 4.746 min  
 Delta R.T.: -0.006 min  
 Response: 17504385  
 Conc: 376.30 ng/ml



#5 AR-1016-3

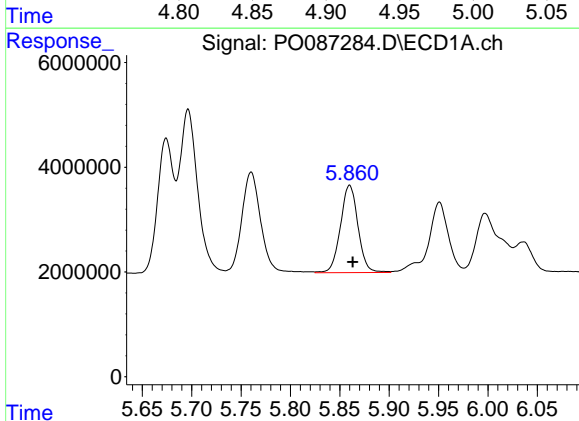
R.T.: 5.760 min  
 Delta R.T.: -0.003 min  
 Response: 25547898  
 Conc: 339.40 ng/ml

Instrument :  
 ECD\_O  
 ClientSampleId :



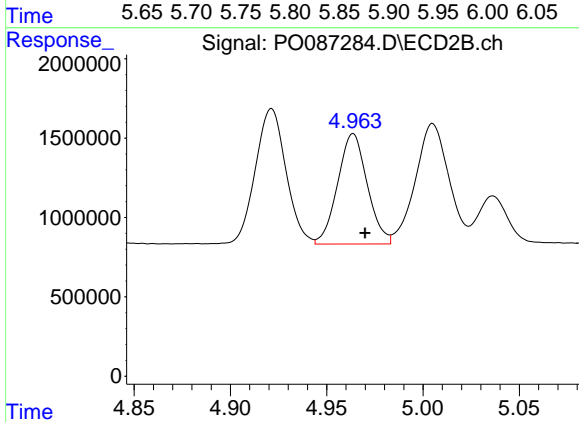
#5 AR-1016-3

R.T.: 4.921 min  
 Delta R.T.: -0.006 min  
 Response: 9484024  
 Conc: 370.20 ng/ml



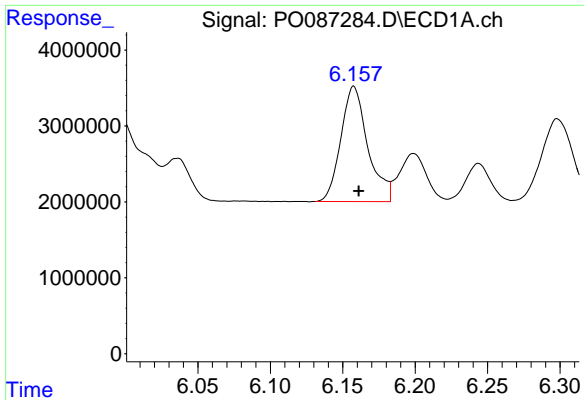
#6 AR-1016-4

R.T.: 5.860 min  
 Delta R.T.: -0.003 min  
 Response: 20697635  
 Conc: 345.43 ng/ml



#6 AR-1016-4

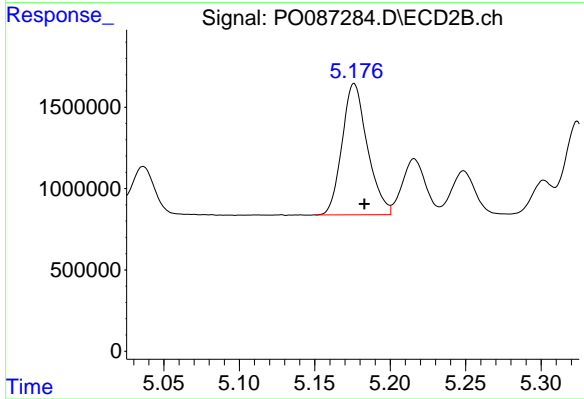
R.T.: 4.964 min  
 Delta R.T.: -0.006 min  
 Response: 7439558  
 Conc: 364.93 ng/ml



#7 AR-1016-5

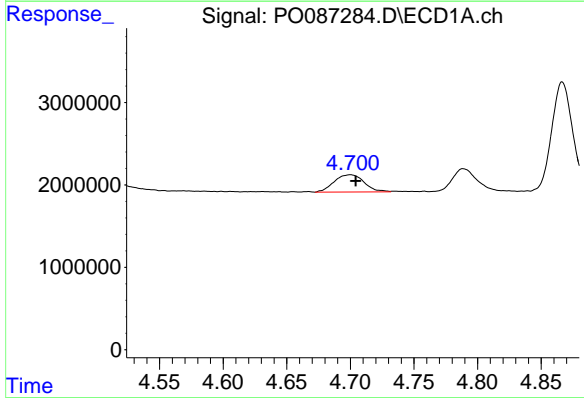
R.T.: 6.158 min  
 Delta R.T.: -0.003 min  
 Response: 19689052  
 Conc: 335.00 ng/ml

Instrument :  
 ECD\_O  
 ClientSampleId :



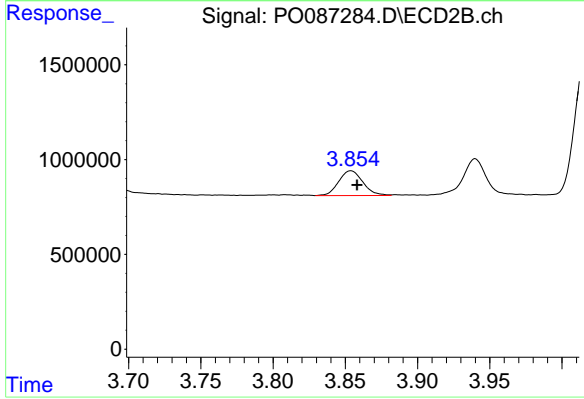
#7 AR-1016-5

R.T.: 5.176 min  
 Delta R.T.: -0.007 min  
 Response: 9426117  
 Conc: 368.84 ng/ml



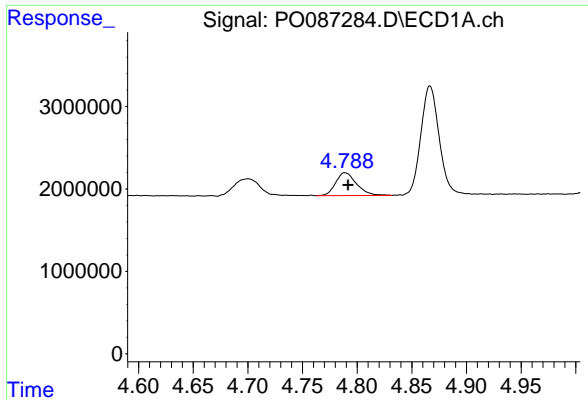
#8 AR-1221-1

R.T.: 4.700 min  
 Delta R.T.: -0.004 min  
 Response: 3443398  
 Conc: 122.99 ng/ml



#8 AR-1221-1

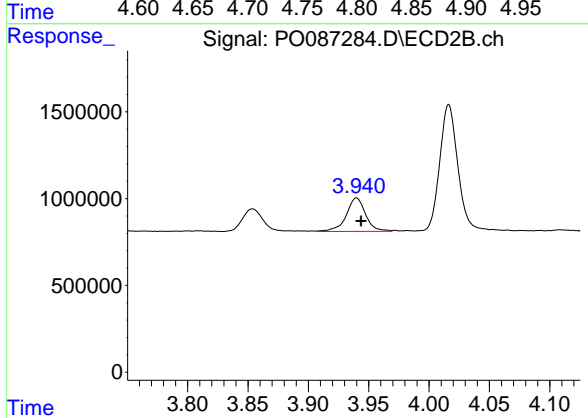
R.T.: 3.854 min  
 Delta R.T.: -0.004 min  
 Response: 1527616  
 Conc: 115.35 ng/ml



#9 AR-1221-2

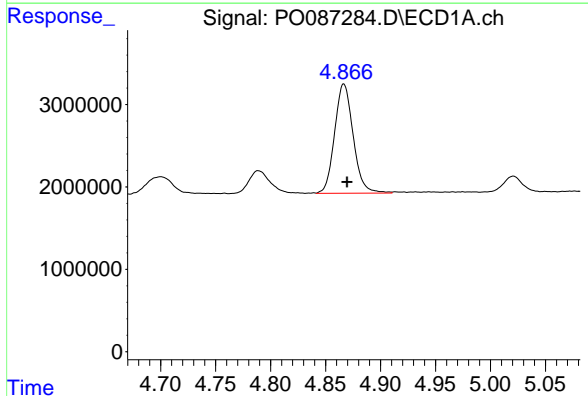
R.T.: 4.789 min  
 Delta R.T.: -0.003 min  
 Response: 3732703  
 Conc: 176.78 ng/ml

Instrument :  
 ECD\_O  
 ClientSampleId :



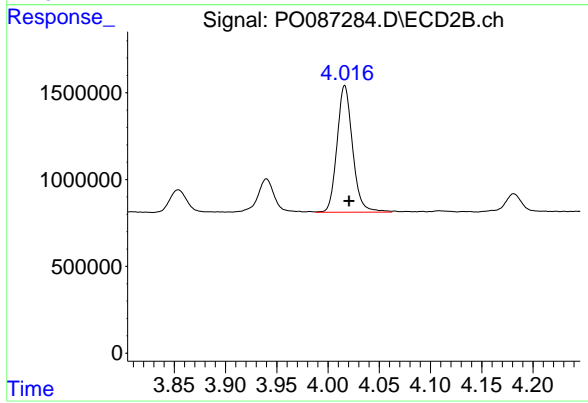
#9 AR-1221-2

R.T.: 3.940 min  
 Delta R.T.: -0.004 min  
 Response: 2160790  
 Conc: 217.65 ng/ml



#10 AR-1221-3

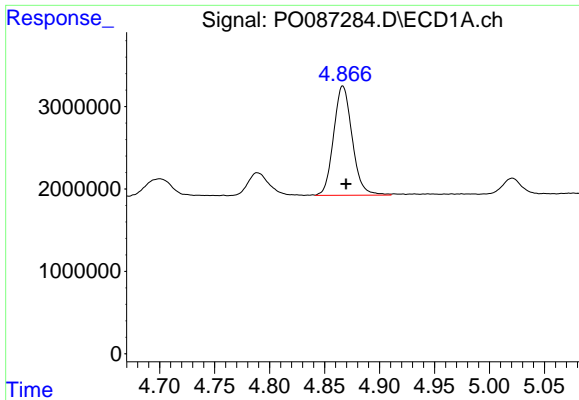
R.T.: 4.867 min  
 Delta R.T.: -0.003 min  
 Response: 15576918  
 Conc: 241.15 ng/ml



#10 AR-1221-3

R.T.: 4.016 min  
 Delta R.T.: -0.004 min  
 Response: 7700366  
 Conc: 264.65 ng/ml

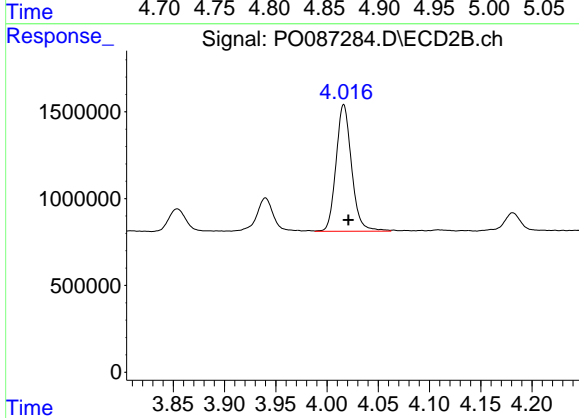




#11 AR-1232-1

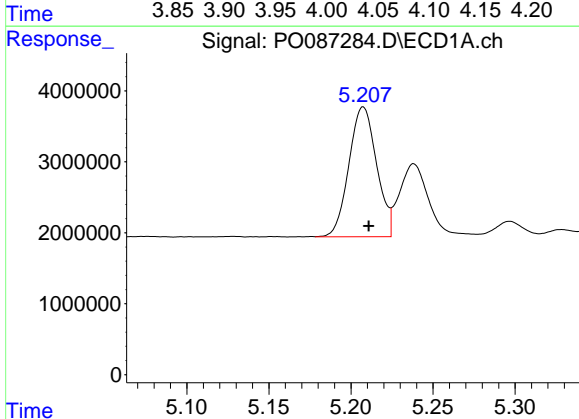
R.T.: 4.867 min  
 Delta R.T.: -0.003 min  
 Response: 15576918  
 Conc: 264.89 ng/ml

Instrument :  
 ECD\_O  
 ClientSampleId :



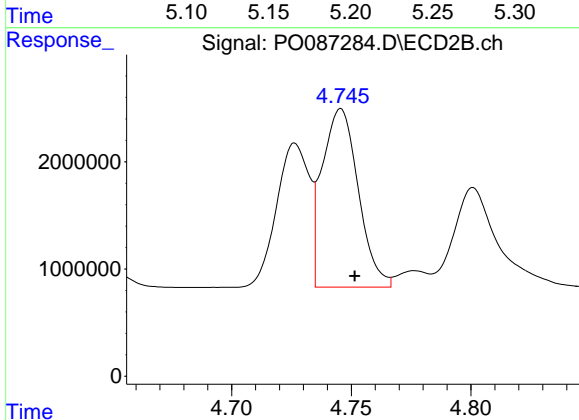
#11 AR-1232-1

R.T.: 4.016 min  
 Delta R.T.: -0.004 min  
 Response: 7700366  
 Conc: 288.63 ng/ml



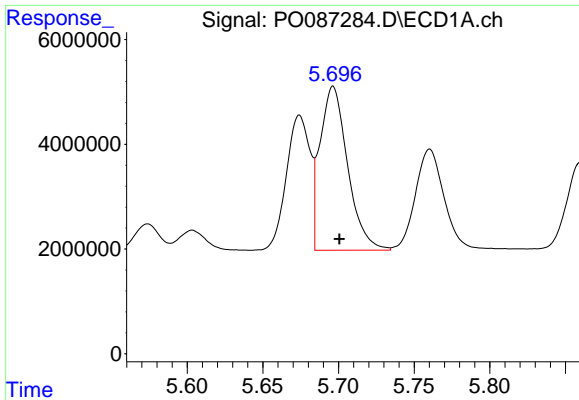
#12 AR-1232-2

R.T.: 5.207 min  
 Delta R.T.: -0.003 min  
 Response: 21514608  
 Conc: 743.33 ng/ml



#12 AR-1232-2

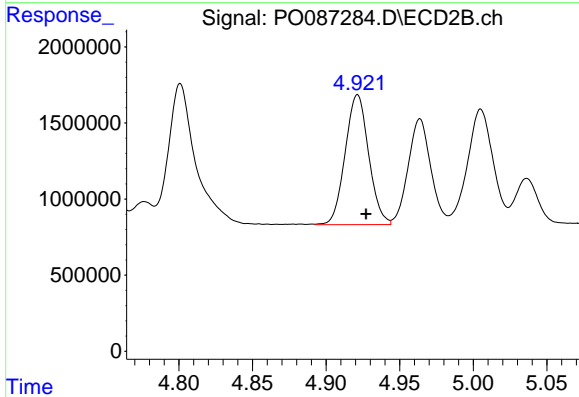
R.T.: 4.746 min  
 Delta R.T.: -0.006 min  
 Response: 17504385  
 Conc: 807.17 ng/ml



#13 AR-1232-3

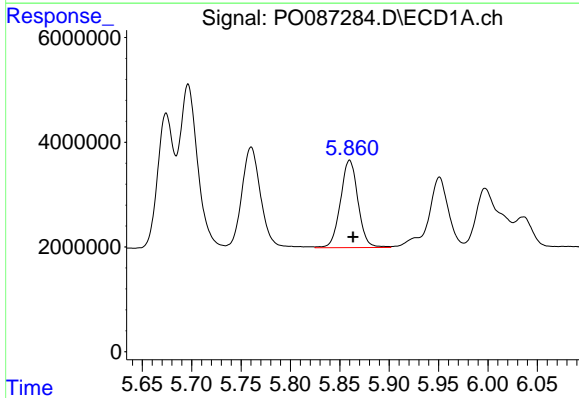
R.T.: 5.696 min  
 Delta R.T.: -0.004 min  
 Response: 39727535  
 Conc: 739.90 ng/ml

Instrument :  
 ECD\_O  
 ClientSampleId :



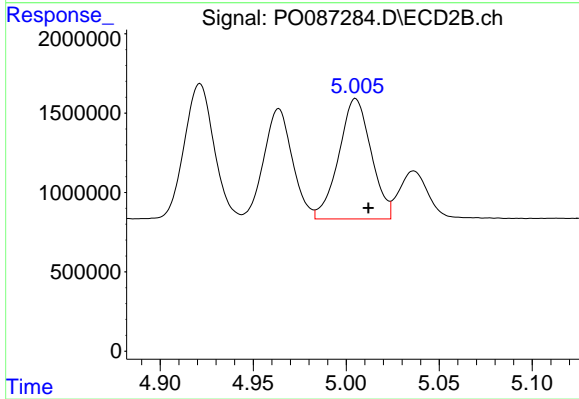
#13 AR-1232-3

R.T.: 4.921 min  
 Delta R.T.: -0.006 min  
 Response: 9484024  
 Conc: 835.35 ng/ml



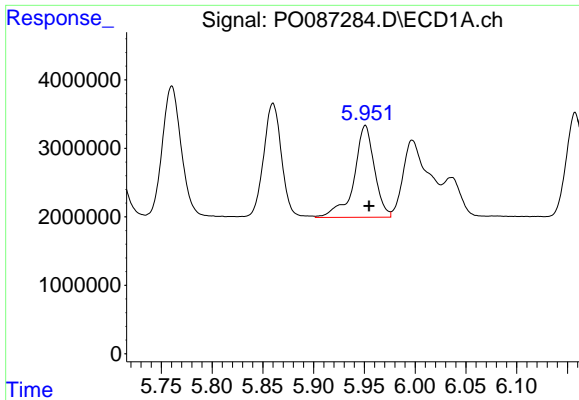
#14 AR-1232-4

R.T.: 5.860 min  
 Delta R.T.: -0.003 min  
 Response: 20697635  
 Conc: 770.66 ng/ml



#14 AR-1232-4

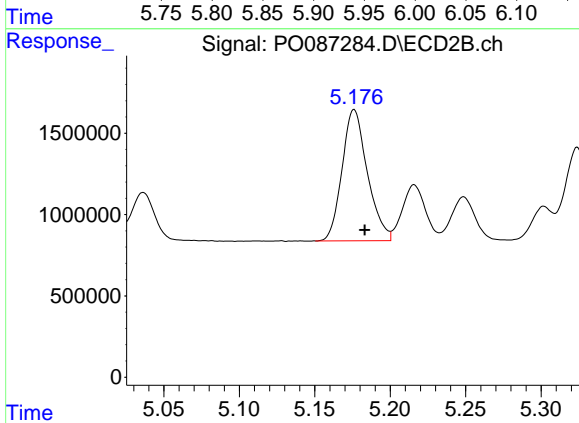
R.T.: 5.005 min  
 Delta R.T.: -0.007 min  
 Response: 9181796  
 Conc: 898.17 ng/ml



#15 AR-1232-5

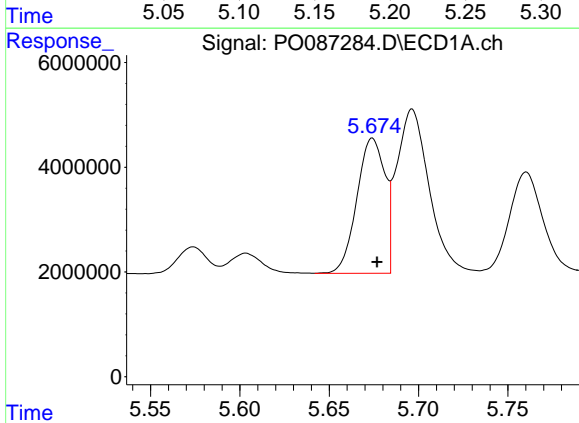
R.T.: 5.951 min  
 Delta R.T.: -0.004 min  
 Response: 18773361  
 Conc: 844.50 ng/ml

Instrument :  
 ECD\_O  
 ClientSampleId :



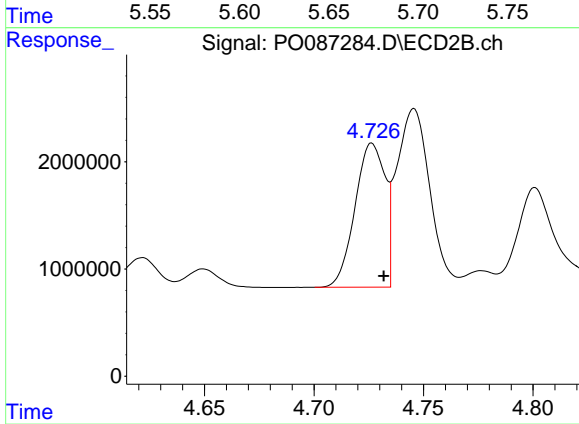
#15 AR-1232-5

R.T.: 5.176 min  
 Delta R.T.: -0.007 min  
 Response: 9426117  
 Conc: 836.31 ng/ml



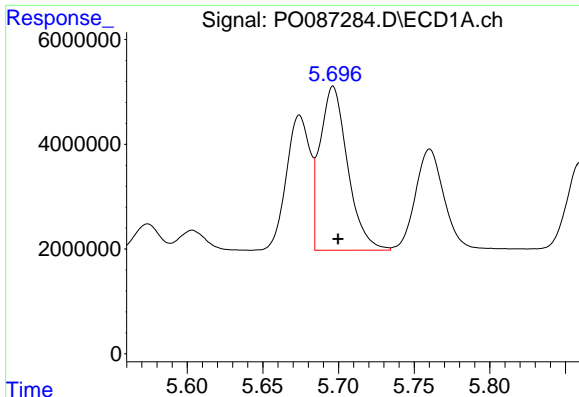
#16 AR-1242-1

R.T.: 5.674 min  
 Delta R.T.: -0.003 min  
 Response: 28177276  
 Conc: 438.39 ng/ml



#16 AR-1242-1

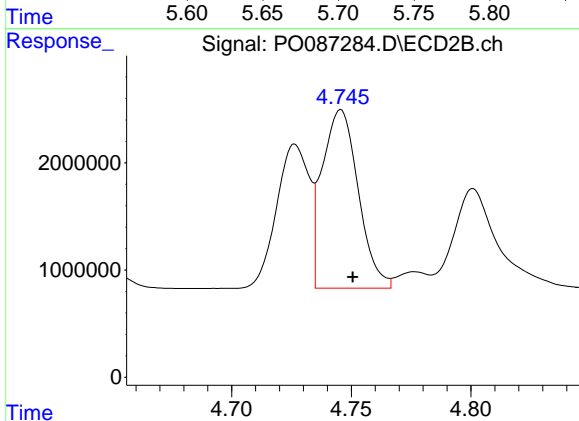
R.T.: 4.726 min  
 Delta R.T.: -0.005 min  
 Response: 12778976  
 Conc: 482.81 ng/ml



#17 AR-1242-2

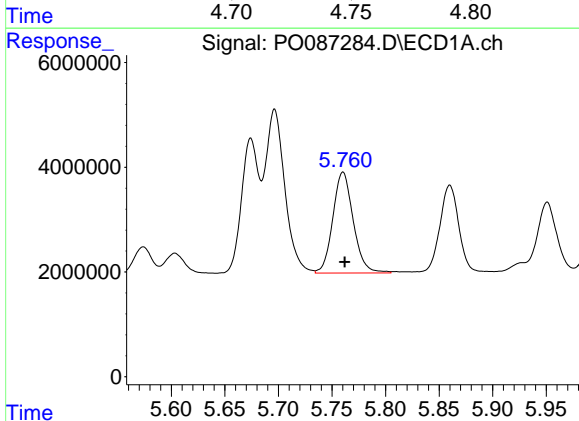
R.T.: 5.696 min  
 Delta R.T.: -0.003 min  
 Response: 39727535  
 Conc: 434.78 ng/ml

Instrument :  
 ECD\_O  
 ClientSampleId :



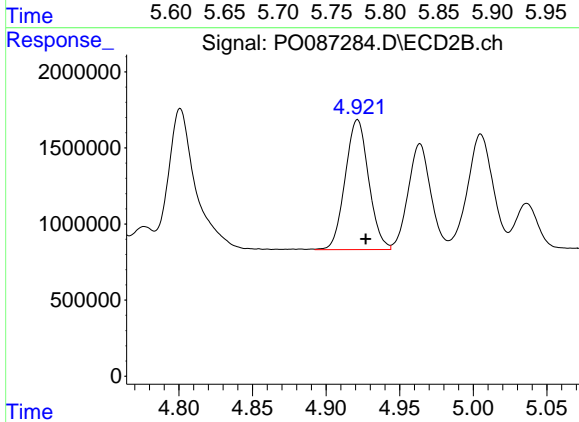
#17 AR-1242-2

R.T.: 4.746 min  
 Delta R.T.: -0.005 min  
 Response: 17504385  
 Conc: 485.95 ng/ml



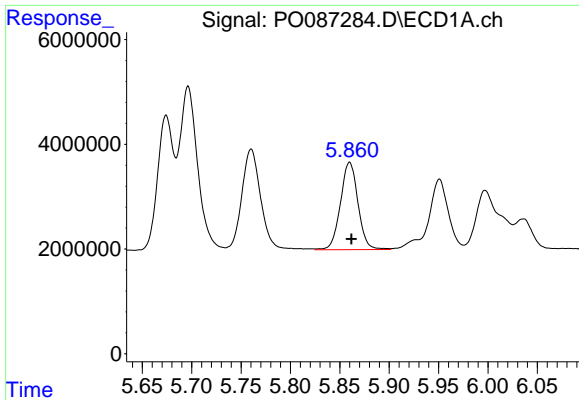
#18 AR-1242-3

R.T.: 5.760 min  
 Delta R.T.: -0.001 min  
 Response: 25547898  
 Conc: 435.26 ng/ml



#18 AR-1242-3

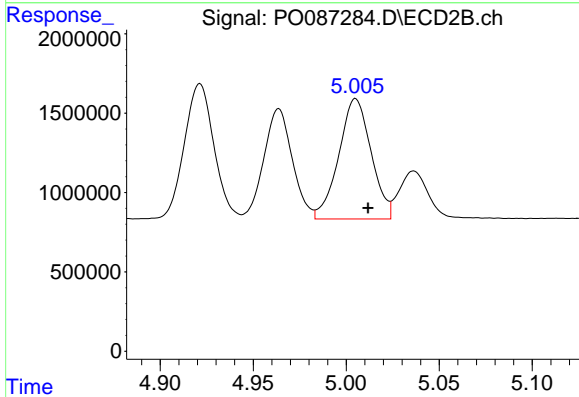
R.T.: 4.921 min  
 Delta R.T.: -0.005 min  
 Response: 9484024  
 Conc: 474.61 ng/ml



#19 AR-1242-4

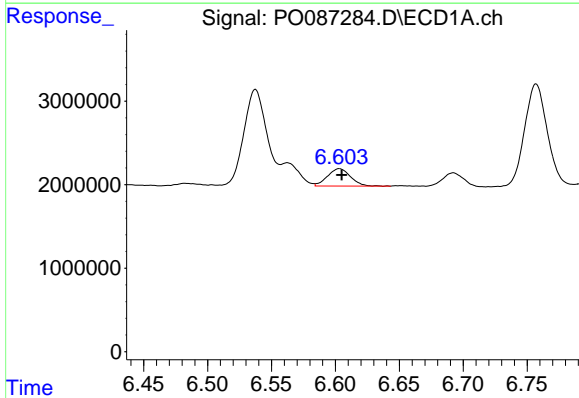
R.T.: 5.860 min  
 Delta R.T.: -0.002 min  
 Response: 20697635  
 Conc: 444.27 ng/ml

Instrument :  
 ECD\_O  
 ClientSampleId :



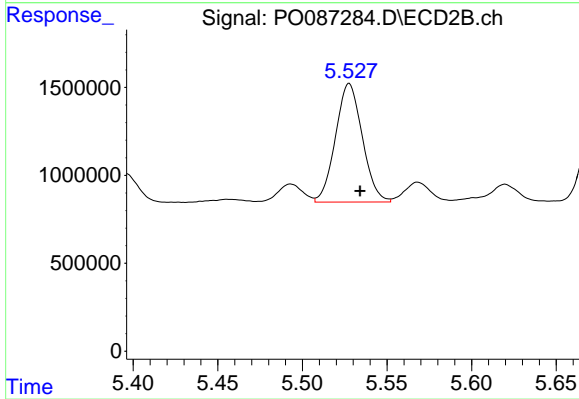
#19 AR-1242-4

R.T.: 5.005 min  
 Delta R.T.: -0.007 min  
 Response: 9181796  
 Conc: 469.75 ng/ml



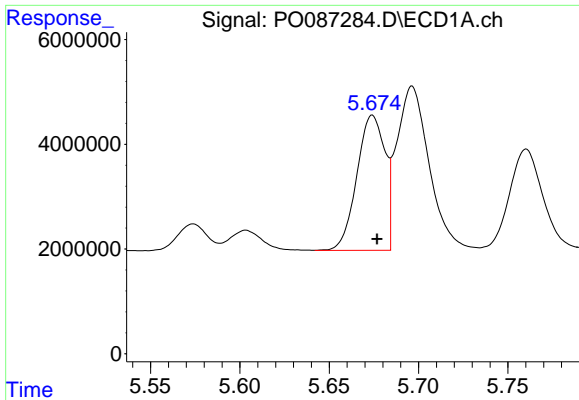
#20 AR-1242-5

R.T.: 6.603 min  
 Delta R.T.: -0.002 min  
 Response: 2630035  
 Conc: 55.43 ng/ml



#20 AR-1242-5

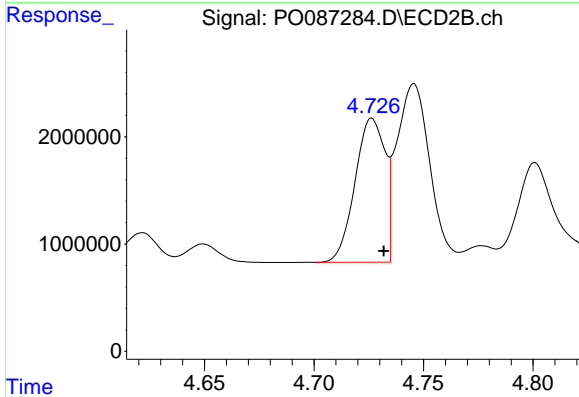
R.T.: 5.528 min  
 Delta R.T.: -0.006 min  
 Response: 7447478  
 Conc: 319.01 ng/ml



#21 AR-1248-1

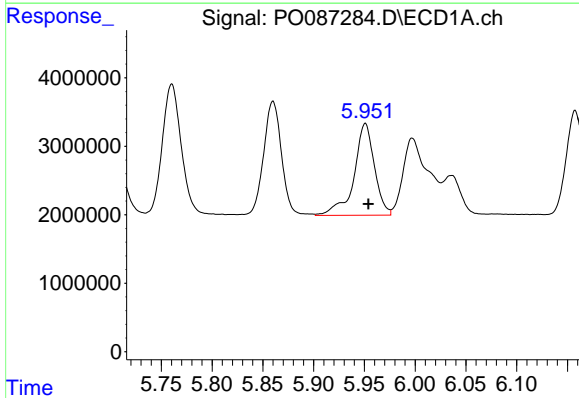
R.T.: 5.674 min  
 Delta R.T.: -0.003 min  
 Response: 28177276  
 Conc: 580.77 ng/ml

Instrument :  
 ECD\_O  
 ClientSampleId :



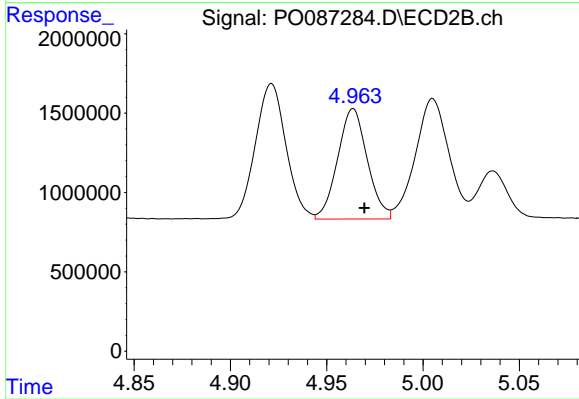
#21 AR-1248-1

R.T.: 4.726 min  
 Delta R.T.: -0.005 min  
 Response: 12778976  
 Conc: 645.83 ng/ml



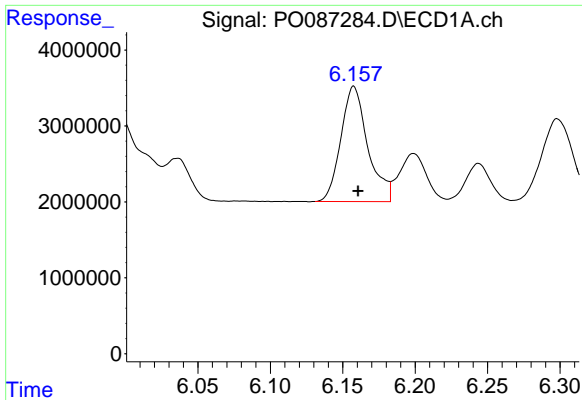
#22 AR-1248-2

R.T.: 5.951 min  
 Delta R.T.: -0.003 min  
 Response: 18773361  
 Conc: 263.52 ng/ml



#22 AR-1248-2

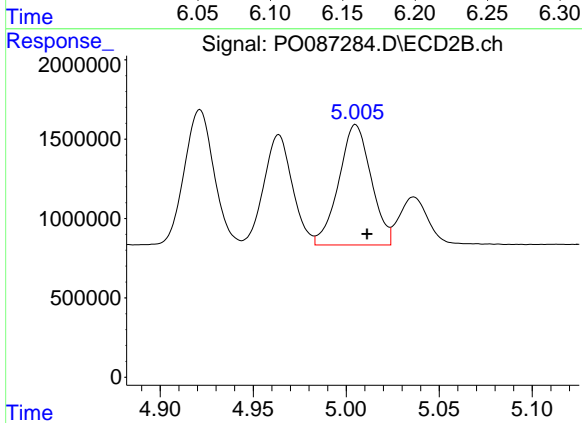
R.T.: 4.964 min  
 Delta R.T.: -0.006 min  
 Response: 7439558  
 Conc: 273.81 ng/ml



#23 AR-1248-3

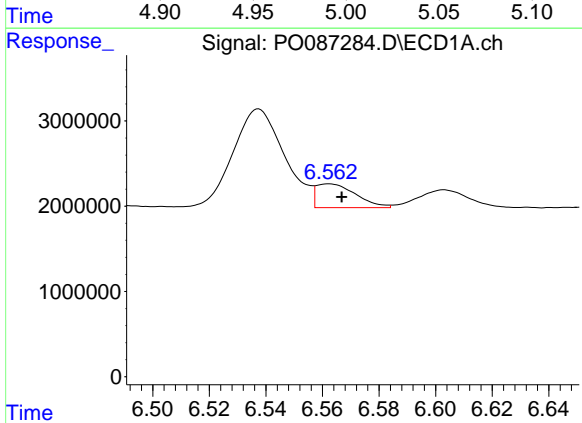
R.T.: 6.158 min  
 Delta R.T.: -0.003 min  
 Response: 19689052  
 Conc: 257.93 ng/ml

Instrument :  
 ECD\_O  
 ClientSampleId :



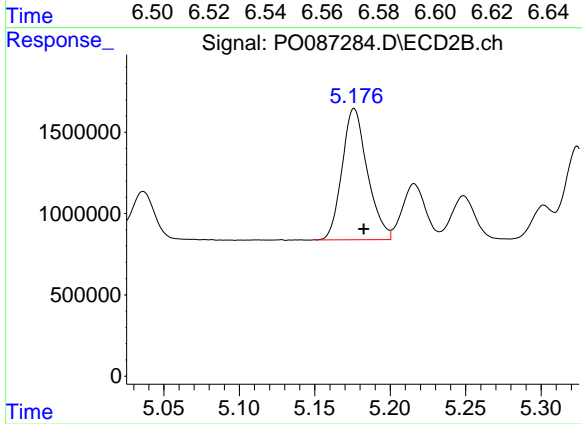
#23 AR-1248-3

R.T.: 5.005 min  
 Delta R.T.: -0.006 min  
 Response: 9181796  
 Conc: 321.29 ng/ml



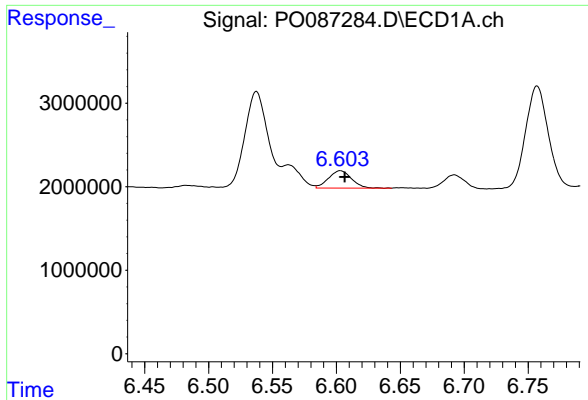
#24 AR-1248-4

R.T.: 6.562 min  
 Delta R.T.: -0.004 min  
 Response: 2700315  
 Conc: 32.43 ng/ml



#24 AR-1248-4

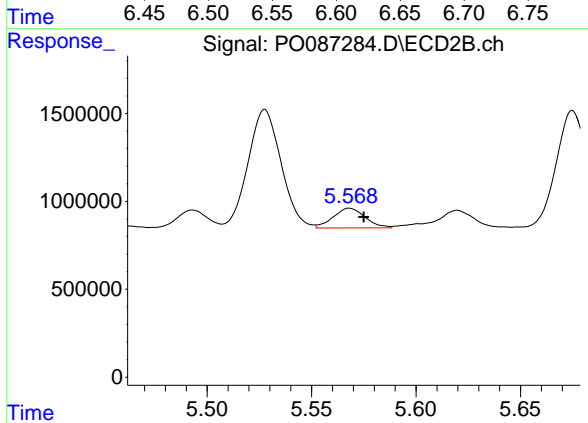
R.T.: 5.176 min  
 Delta R.T.: -0.006 min  
 Response: 9426117  
 Conc: 286.48 ng/ml



#25 AR-1248-5

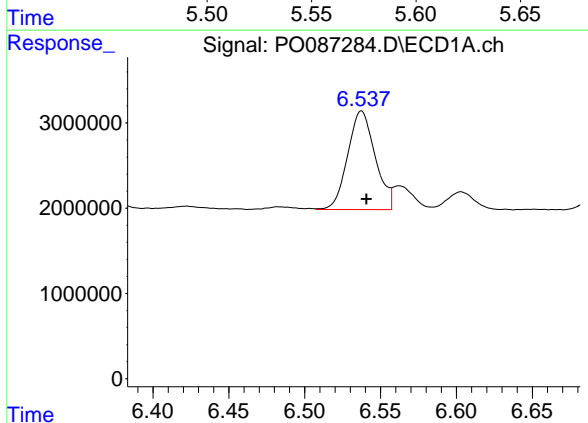
R.T.: 6.603 min  
 Delta R.T.: -0.003 min  
 Response: 2630035  
 Conc: 32.77 ng/ml

Instrument :  
 ECD\_O  
 ClientSampleId :



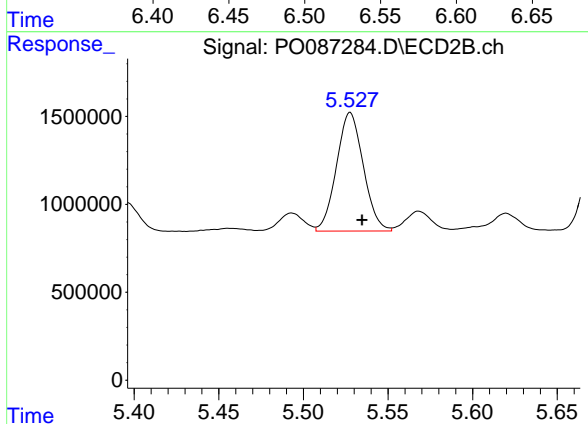
#25 AR-1248-5

R.T.: 5.568 min  
 Delta R.T.: -0.007 min  
 Response: 1190723  
 Conc: 37.25 ng/ml



#26 AR-1254-1

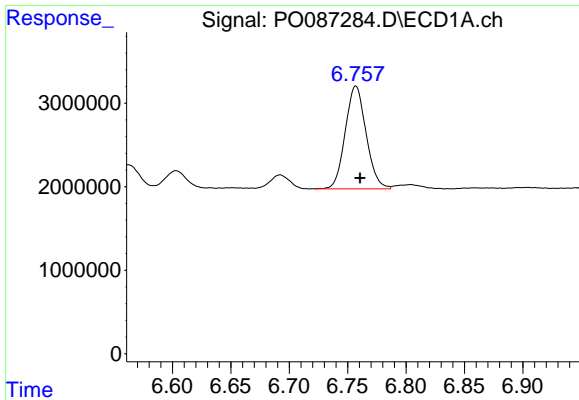
R.T.: 6.537 min  
 Delta R.T.: -0.003 min  
 Response: 14615676  
 Conc: 167.64 ng/ml



#26 AR-1254-1

R.T.: 5.528 min  
 Delta R.T.: -0.007 min  
 Response: 7447478  
 Conc: 153.88 ng/ml

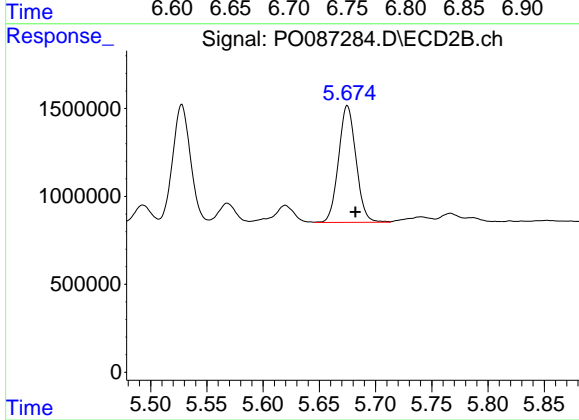




#27 AR-1254-2

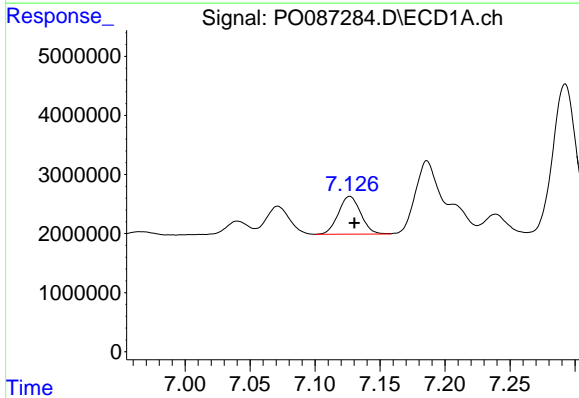
R.T.: 6.757 min  
 Delta R.T.: -0.004 min  
 Response: 15314888  
 Conc: 117.27 ng/ml

Instrument :  
 ECD\_O  
 ClientSampleId :



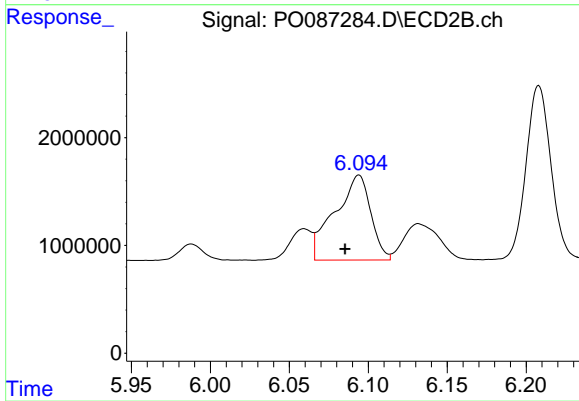
#27 AR-1254-2

R.T.: 5.675 min  
 Delta R.T.: -0.007 min  
 Response: 7187731  
 Conc: 168.52 ng/ml



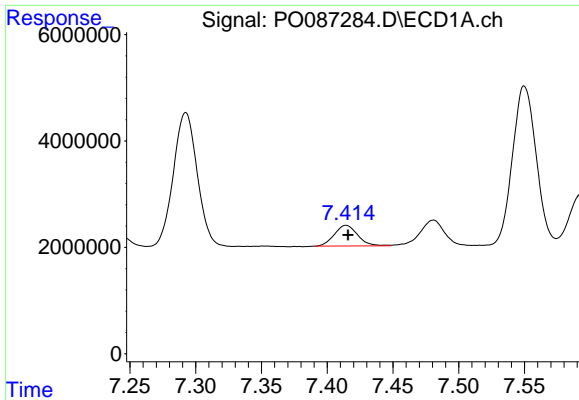
#28 AR-1254-3

R.T.: 7.127 min  
 Delta R.T.: -0.004 min  
 Response: 7631282  
 Conc: 58.49 ng/ml



#28 AR-1254-3

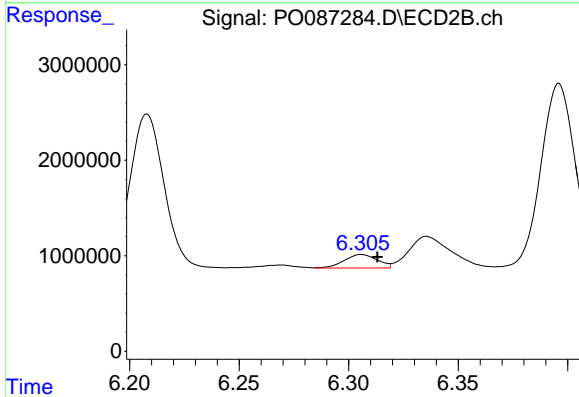
R.T.: 6.094 min  
 Delta R.T.: 0.009 min  
 Response: 12485033  
 Conc: 182.68 ng/ml



#29 AR-1254-4

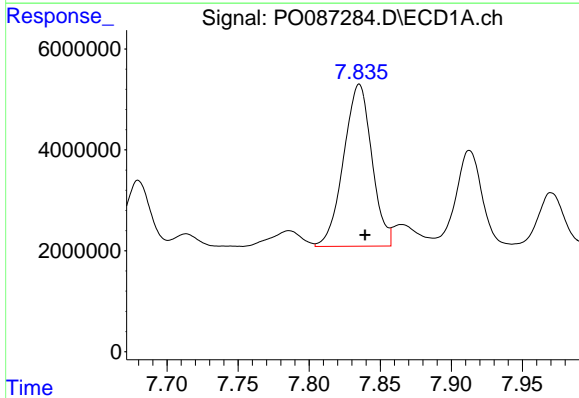
R.T.: 7.414 min  
 Delta R.T.: -0.001 min  
 Response: 4779796  
 Conc: 50.03 ng/ml

Instrument :  
 ECD\_O  
 ClientSampleId :



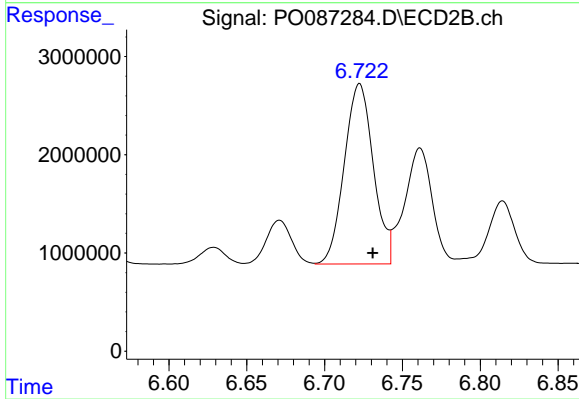
#29 AR-1254-4

R.T.: 6.306 min  
 Delta R.T.: -0.007 min  
 Response: 1476516  
 Conc: 35.00 ng/ml



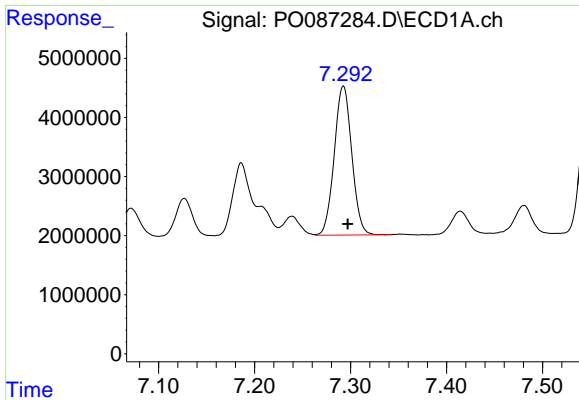
#30 AR-1254-5

R.T.: 7.835 min  
 Delta R.T.: -0.004 min  
 Response: 44435240  
 Conc: 425.31 ng/ml



#30 AR-1254-5

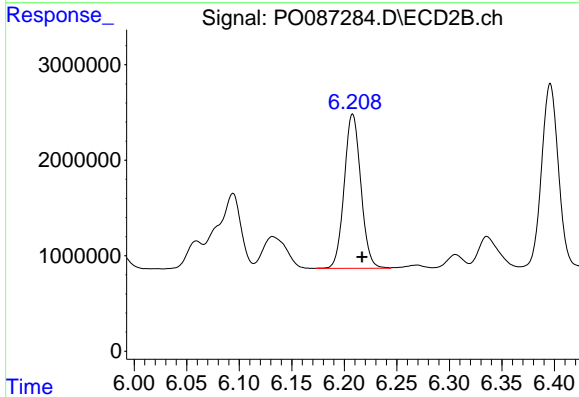
R.T.: 6.722 min  
 Delta R.T.: -0.009 min  
 Response: 23857032  
 Conc: 392.84 ng/ml



#31 AR-1260-1

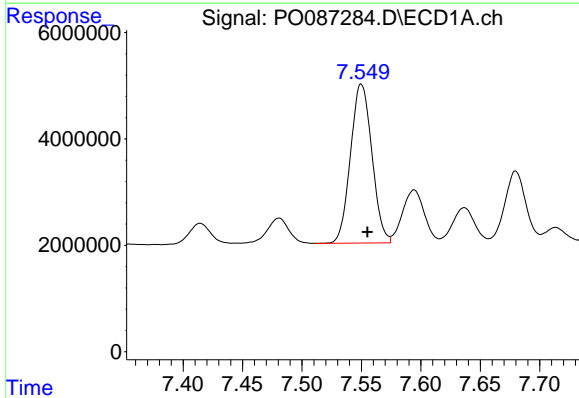
R.T.: 7.292 min  
Delta R.T.: -0.005 min  
Response: 32031266  
Conc: 317.85 ng/ml

Instrument :  
ECD\_O  
ClientSampleId :



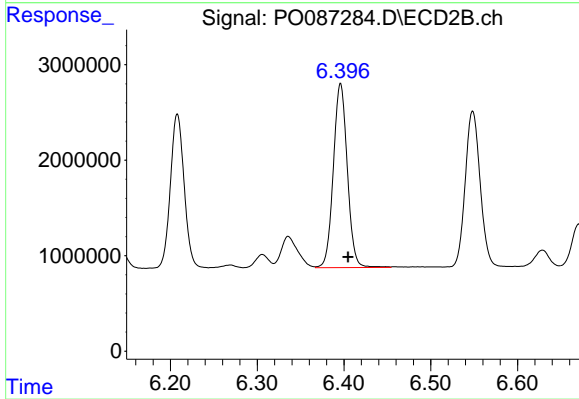
#31 AR-1260-1

R.T.: 6.208 min  
Delta R.T.: -0.009 min  
Response: 17788990  
Conc: 379.77 ng/ml



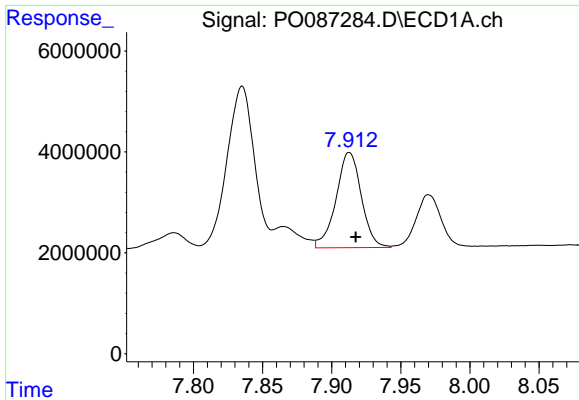
#32 AR-1260-2

R.T.: 7.550 min  
Delta R.T.: -0.005 min  
Response: 37465134  
Conc: 317.89 ng/ml



#32 AR-1260-2

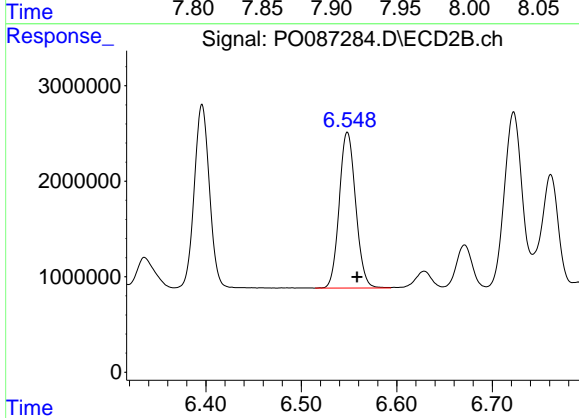
R.T.: 6.396 min  
Delta R.T.: -0.009 min  
Response: 21551639  
Conc: 384.76 ng/ml



#33 AR-1260-3

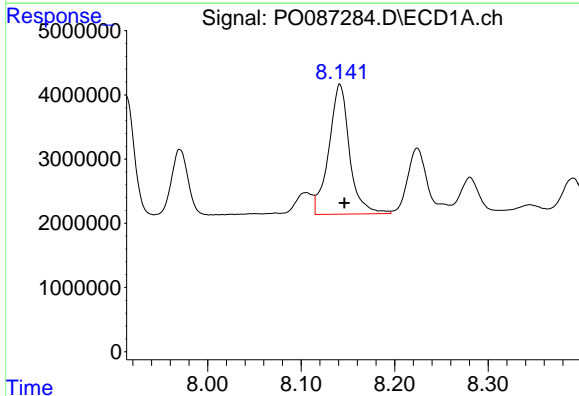
R.T.: 7.913 min  
 Delta R.T.: -0.005 min  
 Response: 24004623  
 Conc: 283.16 ng/ml

Instrument :  
 ECD\_O  
 ClientSampleId :



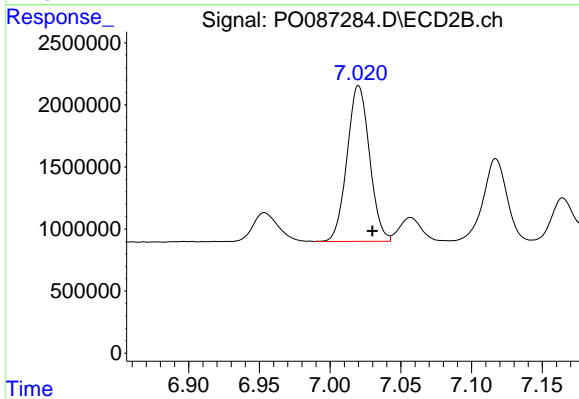
#33 AR-1260-3

R.T.: 6.548 min  
 Delta R.T.: -0.010 min  
 Response: 19520594  
 Conc: 366.84 ng/ml



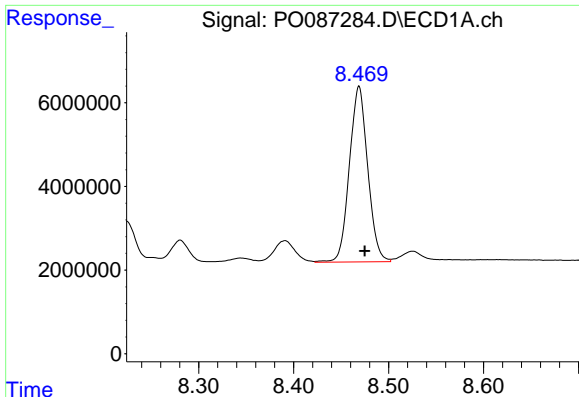
#34 AR-1260-4

R.T.: 8.141 min  
 Delta R.T.: -0.005 min  
 Response: 31059087  
 Conc: 304.97 ng/ml



#34 AR-1260-4

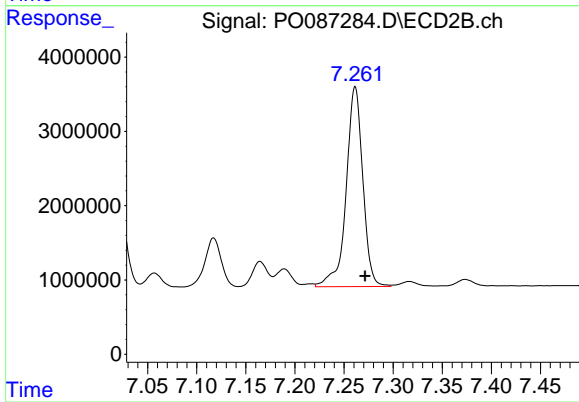
R.T.: 7.020 min  
 Delta R.T.: -0.010 min  
 Response: 13882211  
 Conc: 344.46 ng/ml



#35 AR-1260-5

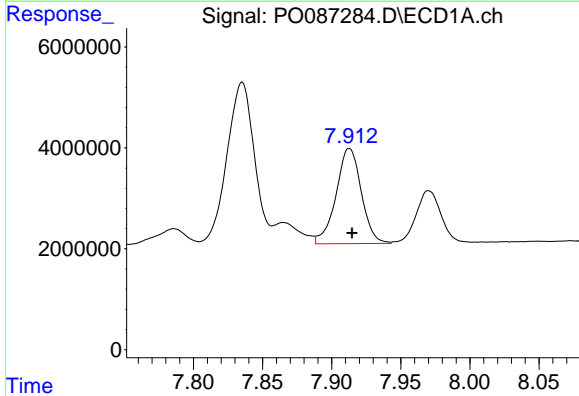
R.T.: 8.469 min  
 Delta R.T.: -0.006 min  
 Response: 56308161  
 Conc: 309.82 ng/ml

Instrument :  
 ECD\_O  
 ClientSampleId :



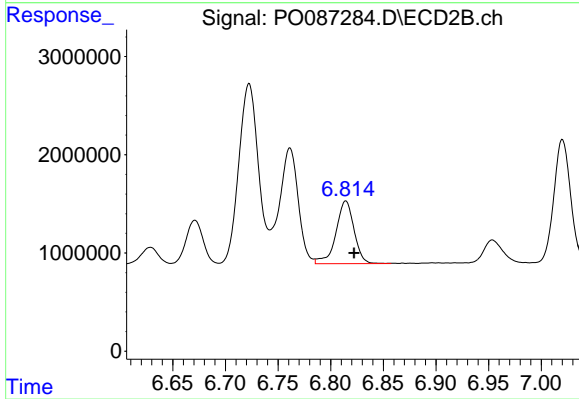
#35 AR-1260-5

R.T.: 7.261 min  
 Delta R.T.: -0.010 min  
 Response: 31785228  
 Conc: 338.84 ng/ml



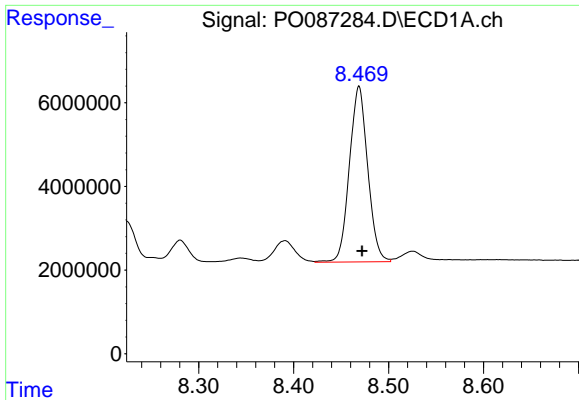
#36 AR-1262-1

R.T.: 7.913 min  
 Delta R.T.: -0.002 min  
 Response: 24004623  
 Conc: 195.21 ng/ml



#36 AR-1262-1

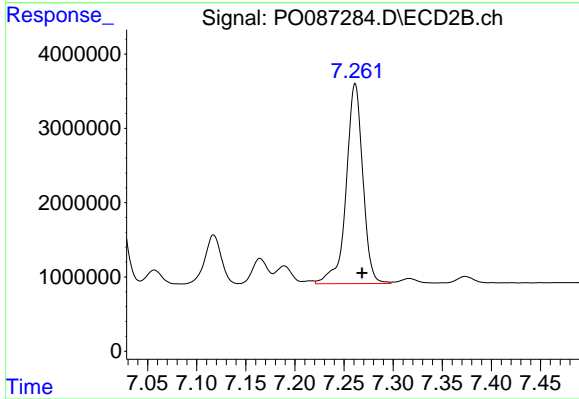
R.T.: 6.814 min  
 Delta R.T.: -0.008 min  
 Response: 7650262  
 Conc: 316.21 ng/ml



#37 AR-1262-2

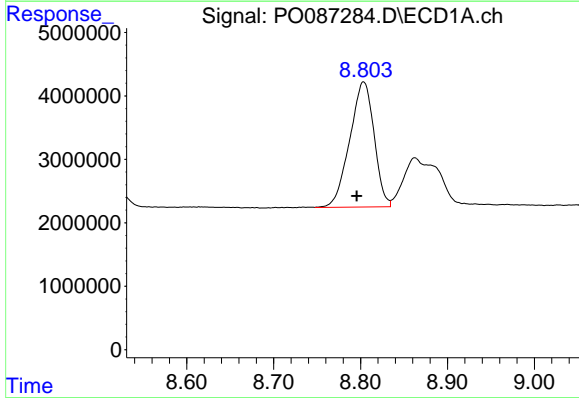
R.T.: 8.469 min  
 Delta R.T.: -0.003 min  
 Response: 56308161  
 Conc: 274.33 ng/ml

Instrument :  
 ECD\_O  
 ClientSampleId :



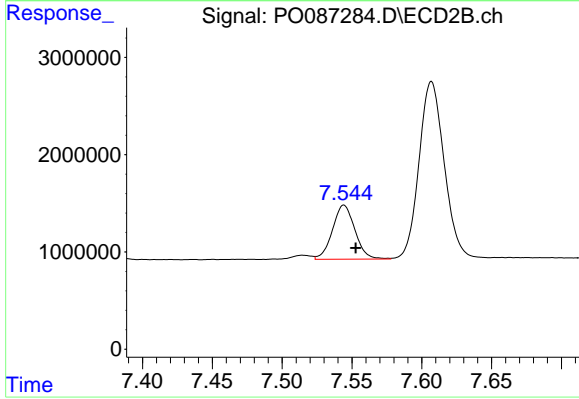
#37 AR-1262-2

R.T.: 7.261 min  
 Delta R.T.: -0.007 min  
 Response: 31785228  
 Conc: 314.63 ng/ml



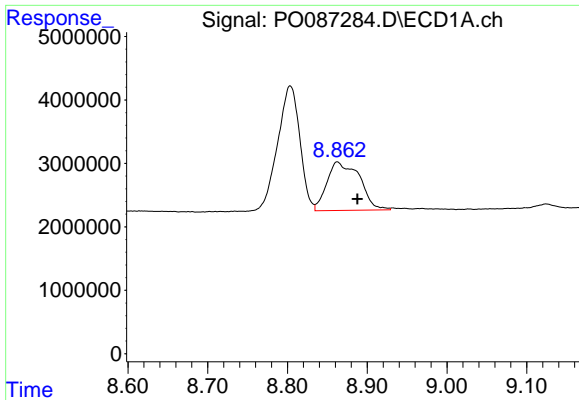
#38 AR-1262-3

R.T.: 8.803 min  
 Delta R.T.: 0.008 min  
 Response: 38376616  
 Conc: 265.82 ng/ml



#38 AR-1262-3

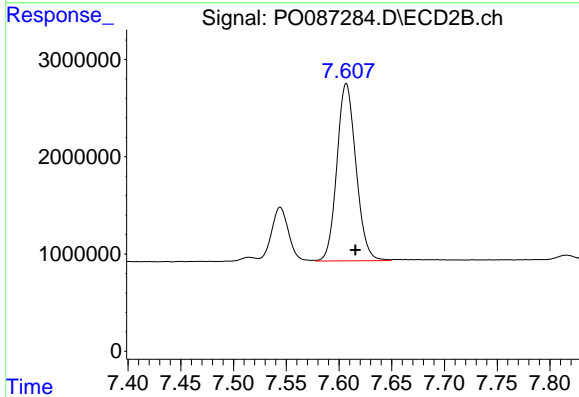
R.T.: 7.544 min  
 Delta R.T.: -0.009 min  
 Response: 6212384  
 Conc: 153.39 ng/ml



#39 AR-1262-4

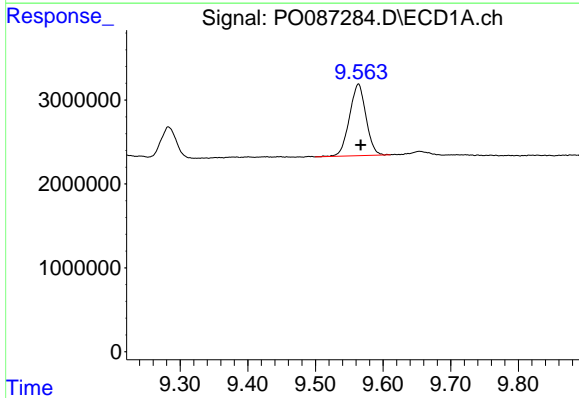
R.T.: 8.863 min  
 Delta R.T.: -0.025 min  
 Response: 21756358  
 Conc: 308.14 ng/ml

Instrument :  
 ECD\_O  
 ClientSampleId :



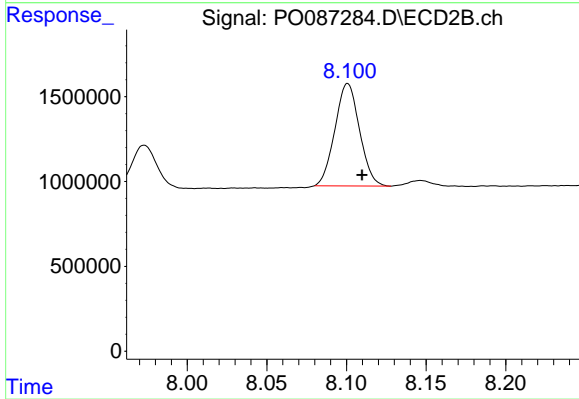
#39 AR-1262-4

R.T.: 7.607 min  
 Delta R.T.: -0.009 min  
 Response: 22898550  
 Conc: 305.90 ng/ml



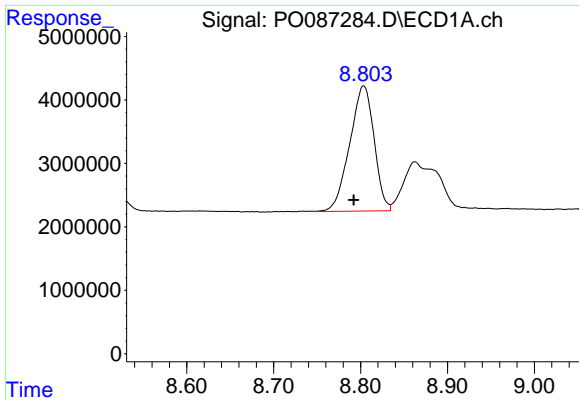
#40 AR-1262-5

R.T.: 9.564 min  
 Delta R.T.: -0.004 min  
 Response: 14446972  
 Conc: 186.95 ng/ml



#40 AR-1262-5

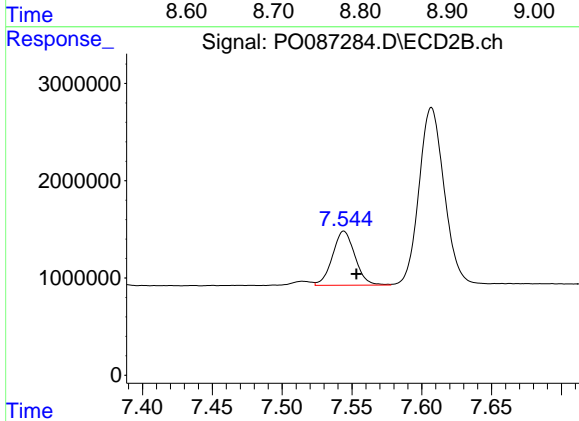
R.T.: 8.101 min  
 Delta R.T.: -0.009 min  
 Response: 6482056  
 Conc: 188.42 ng/ml



#41 AR-1268-1

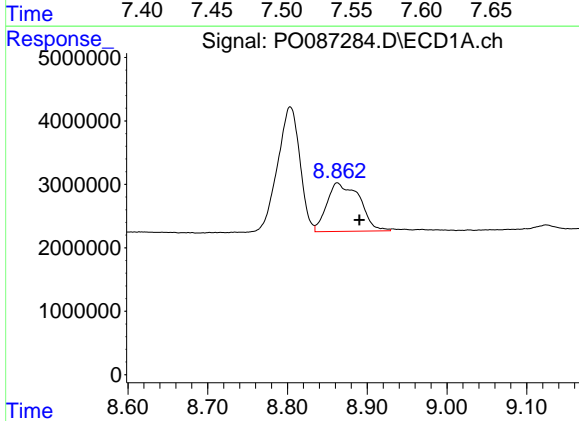
R.T.: 8.803 min  
 Delta R.T.: 0.011 min  
 Response: 38376616  
 Conc: 149.29 ng/ml

Instrument :  
 ECD\_O  
 ClientSampleId :



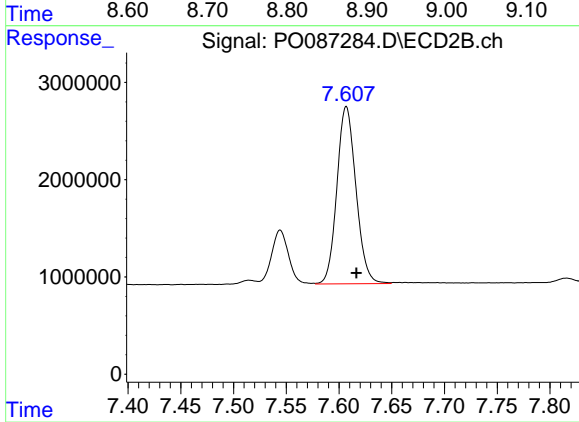
#41 AR-1268-1

R.T.: 7.544 min  
 Delta R.T.: -0.009 min  
 Response: 6212384  
 Conc: 52.01 ng/ml



#42 AR-1268-2

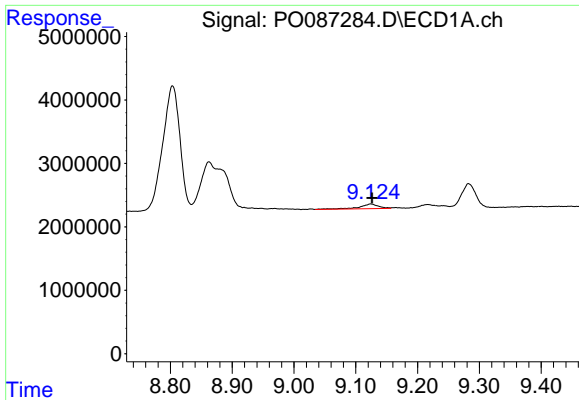
R.T.: 8.863 min  
 Delta R.T.: -0.027 min  
 Response: 21756358  
 Conc: 91.89 ng/ml



#42 AR-1268-2

R.T.: 7.607 min  
 Delta R.T.: -0.010 min  
 Response: 22898550  
 Conc: 210.30 ng/ml

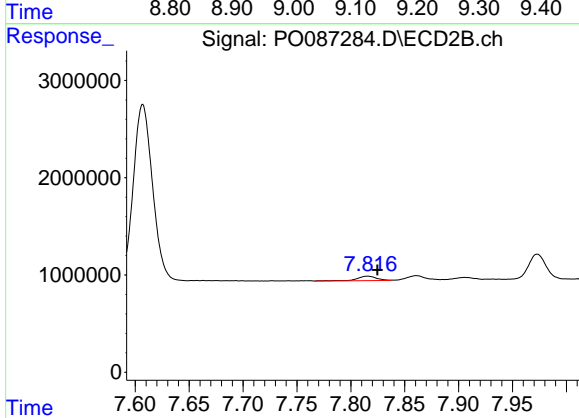




#43 AR-1268-3

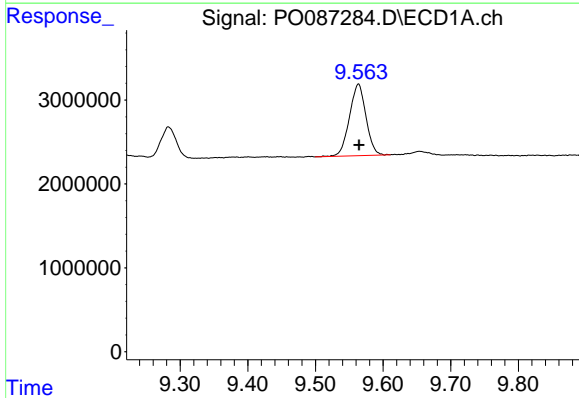
R.T.: 9.124 min  
 Delta R.T.: -0.002 min  
 Response: 1550676  
 Conc: 7.75 ng/ml

Instrument :  
 ECD\_O  
 ClientSampleId :



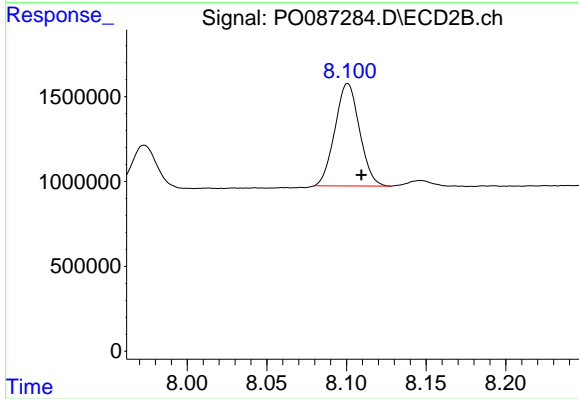
#43 AR-1268-3

R.T.: 7.816 min  
 Delta R.T.: -0.009 min  
 Response: 572912  
 Conc: 6.24 ng/ml



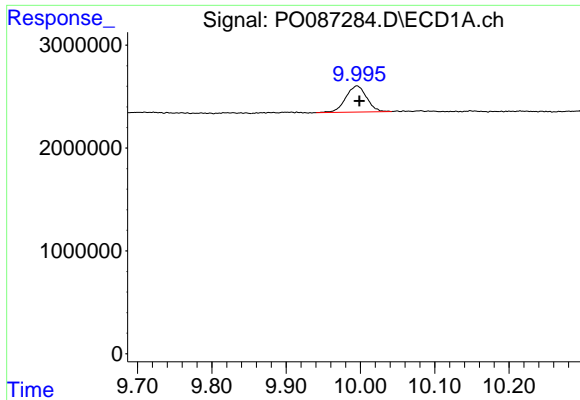
#44 AR-1268-4

R.T.: 9.564 min  
 Delta R.T.: 0.000 min  
 Response: 14446972  
 Conc: 160.25 ng/ml



#44 AR-1268-4

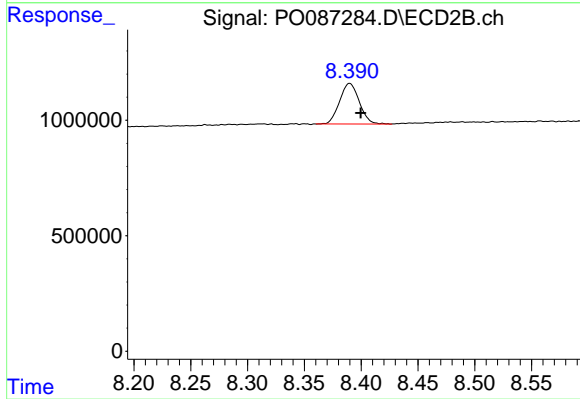
R.T.: 8.101 min  
 Delta R.T.: -0.009 min  
 Response: 6482056  
 Conc: 163.13 ng/ml



#45 AR-1268-5

R.T.: 9.995 min  
Delta R.T.: -0.003 min  
Response: 4974664  
Conc: 7.78 ng/ml

Instrument :  
ECD\_O  
ClientSampleId :



#45 AR-1268-5

R.T.: 8.390 min  
Delta R.T.: -0.010 min  
Response: 2121277  
Conc: 7.37 ng/ml