

Data Path : Z:\pestpcbsrv\HPCHEM1\ECD_0\Data\P0062222\
 Data File : P0087304.D
 Signal(s) : Signal #1: ECD1A.ch Signal #2: ECD2B.ch
 Acq On : 23 Jun 2022 05:33
 Operator : YP/AJ
 Sample : N3449-04 10X
 Misc :
 ALS Vial : 46 Sample Multiplier: 1

Instrument :
 ECD_0
 ClientSampleId :

Integration File signal 1: autoint1.e
 Integration File signal 2: autoint2.e
 Quant Time: Jun 23 07:50:58 2022
 Quant Method : Z:\pestpcbsrv\HPCHEM1\ECD_0\methods\P0060922.M
 Quant Title : GC EXTRACTABLES
 QLast Update : Fri Jun 10 04:33:49 2022
 Response via : Initial Calibration
 Integrator: ChemStation

Volume Inj. : 2 µl
 Signal #1 Phase : ZB-MR1 Signal #2 Phase: ZB-MR2
 Signal #1 Info : 30Mx0.32mmx 0.50µ Signal #2 Info : 30M x 0.32mm x 0.25µm

Compound	RT#1	RT#2	Resp#1	Resp#2	ng/ml	ng/ml
System Monitoring Compounds						
1) SA Tetrachlo...	4.491	3.639	3105809	1893539	1.329	1.682 #
2) SA Decachlor...	10.336	8.641	18373752	1366392	9.984	1.738 #
Target Compounds						
3) L1 AR-1016-1	5.687	4.727	104004	464906	1.243	13.807 #
4) L1 AR-1016-2	5.704	4.748	141965	26749	1.207	0.575 #
5) L1 AR-1016-3	5.777	4.930	955550	84912	12.694	3.314 #
6) L1 AR-1016-4	5.862	4.975	137723	52416	2.299	2.571
7) L1 AR-1016-5	6.160	5.189	45845	11769	0.780	0.460 #
8) L2 AR-1221-1	4.704	3.857	468360	108636	16.729	8.203 #
9) L2 AR-1221-2	4.807	3.956	6221191	3379611	294.638	340.424
10) L2 AR-1221-3	4.870	4.032	75155	546602	1.163	18.786 #
11) L3 AR-1232-1	4.870	4.032	75155	546602	1.278	20.488 #
12) L3 AR-1232-2	5.212	4.748	2804913	26749	96.910	1.233 #
13) L3 AR-1232-3	5.704	4.930	141965	84912	2.644	7.479 #
14) L3 AR-1232-4	5.862	5.003	137723	1853814	5.128	181.341 #
15) L3 AR-1232-5	5.945	5.189	1181006	11769	53.126	1.044 #
16) L4 AR-1242-1	5.687	4.727	104004	464906	1.618	17.565 #
17) L4 AR-1242-2	5.704	4.748	141965	26749	1.554	0.743 #
18) L4 AR-1242-3	5.777	4.930	955550	84912	16.280	4.249 #
19) L4 AR-1242-4	5.862	5.003	137723	1853814	2.956	94.843 #
20) L4 AR-1242-5	6.605	5.537	71596	104980	1.509	4.497 #
21) L5 AR-1248-1	5.687	4.727	104004	464906	2.144	23.496 #
22) L5 AR-1248-2	5.945	4.975	1181006	52416	16.578	1.929 #
23) L5 AR-1248-3	6.160	5.003	45845	1853814	0.601	64.868 #
24) L5 AR-1248-4	6.559	5.189	834284	11769	10.021	0.358 #
25) L5 AR-1248-5	6.605	5.570	71596	37630	0.892	1.177 #
26) L6 AR-1254-1	6.559	5.537	834284	104980	9.569	2.169 #
27) L6 AR-1254-2	6.729	5.679	7073930	82600	54.167	1.937 #
28) L6 AR-1254-3	7.119	6.087	5279917	458015	40.468	6.702 #
29) L6 AR-1254-4	7.415	6.314	59443	121145	0.622	2.872 #
30) L6 AR-1254-5	7.844	6.731	161425	10815	1.545	0.178 #
31) L7 AR-1260-1	7.294	6.210	282029	1951359	2.799	41.659 #
32) L7 AR-1260-2	7.565	6.409	6194901	266388	52.564	4.756 #
33) L7 AR-1260-3	7.917	6.566	497861	1152240	5.873	21.653 #
34) L7 AR-1260-4	8.133	7.045	376617	56803	3.698	1.409 #
35) L7 AR-1260-5	8.491	7.259	76128	1111236	0.419	11.846 #
36) L8 AR-1262-1	7.917	6.825	497861	54178	4.049	2.239 #
37) L8 AR-1262-2	8.491	7.259	76128	1111236	0.371	11.000 #
38) L8 AR-1262-3	8.797	7.553	177491	89157	1.229	2.201 #
39) L8 AR-1262-4	8.894	7.614	219875	374704	3.114	5.006 #
40) L8 AR-1262-5	9.572	8.105	44873	14668	0.581	0.426 #
41) L9 AR-1268-1	8.790	7.553	86658	89157	0.337	0.746 #

Data Path : Z:\pestpcbsrv\HPCHEM1\ECD_0\Data\P0062222\
 Data File : P0087304.D
 Signal(s) : Signal #1: ECD1A.ch Signal #2: ECD2B.ch
 Acq On : 23 Jun 2022 05:33
 Operator : YP/AJ
 Sample : N3449-04 10X
 Misc :
 ALS Vial : 46 Sample Multiplier: 1

Instrument :
 ECD_0
 ClientSampleId :

Integration File signal 1: autoint1.e
 Integration File signal 2: autoint2.e
 Quant Time: Jun 23 07:50:58 2022
 Quant Method : Z:\pestpcbsrv\HPCHEM1\ECD_0\methods\P0060922.M
 Quant Title : GC EXTRACTABLES
 QLast Update : Fri Jun 10 04:33:49 2022
 Response via : Initial Calibration
 Integrator: ChemStation

Volume Inj. : 2 µl
 Signal #1 Phase : ZB-MR1 Signal #2 Phase: ZB-MR2
 Signal #1 Info : 30Mx0.32mmx 0.50µ Signal #2 Info : 30M x 0.32mm x 0.25µm

	Compound	RT#1	RT#2	Resp#1	Resp#2	ng/ml	ng/ml
42)	L9 AR-1268-2	8.894	7.614	219875	374704	0.929	3.441 #
43)	L9 AR-1268-3	9.124	7.829	398638	73101	1.991	0.796 #
44)	L9 AR-1268-4	9.562	8.105	9924	14668	0.110	0.369 #
45)	L9 AR-1268-5	9.994	8.408	14641	1603	0.023	0.006 #

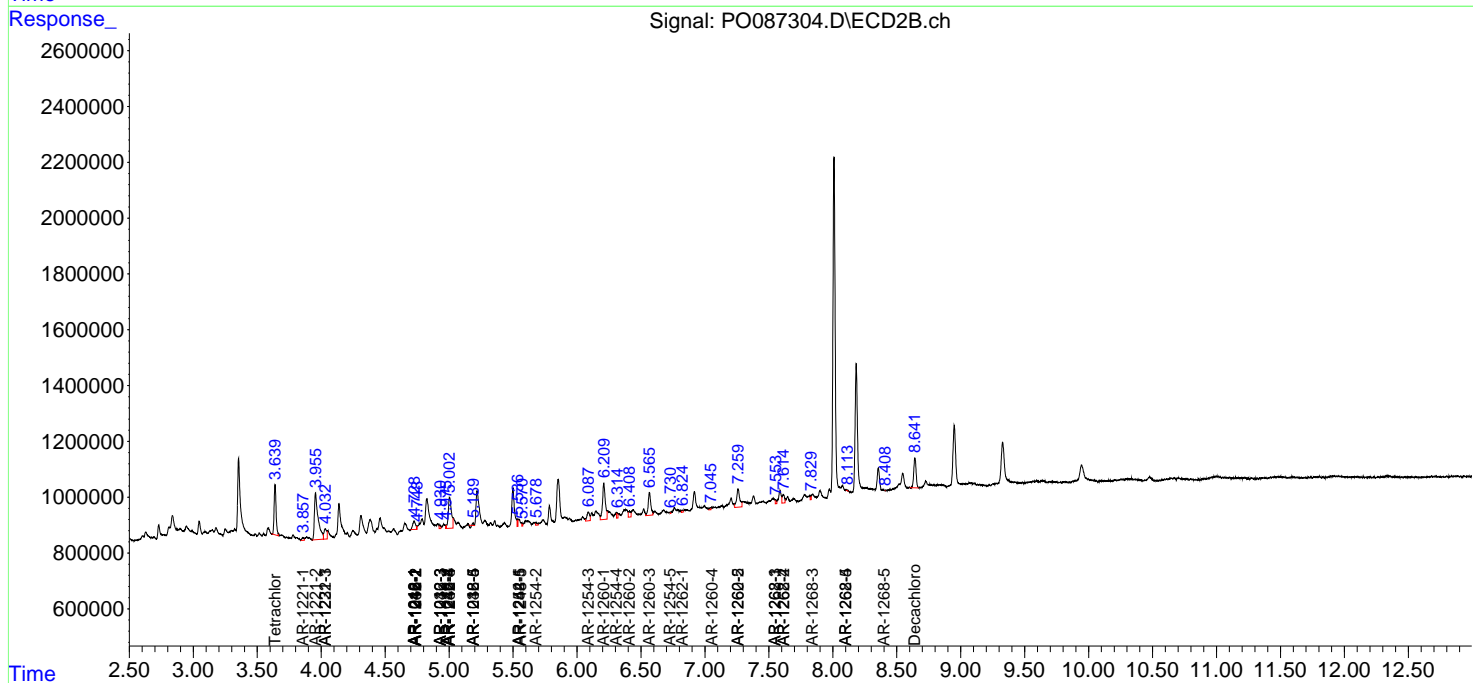
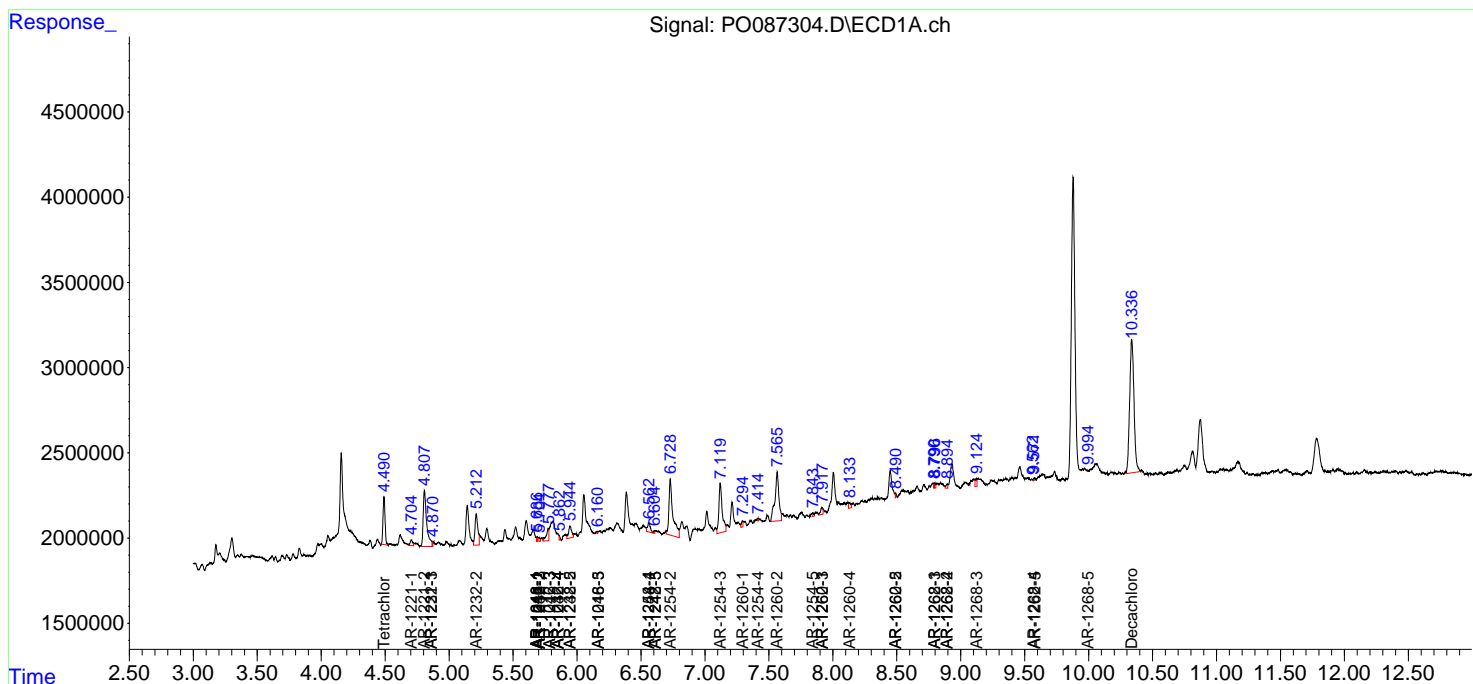
(f)=RT Delta > 1/2 Window (#)=Amounts differ by > 25% (m)=manual int.

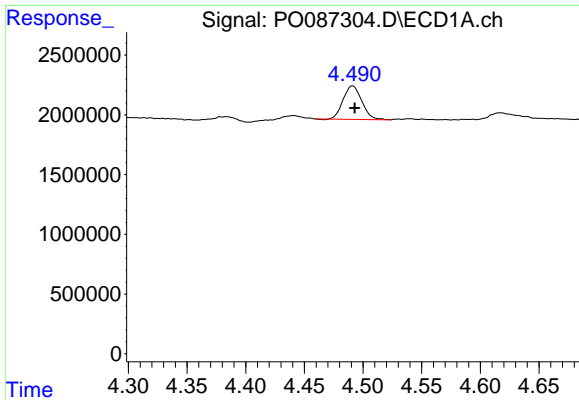
Data Path : Z:\pestpcbsrv\HPCHEM1\ECD_O\Data\PO062222\
 Data File : PO087304.D
 Signal(s) : Signal #1: ECD1A.ch Signal #2: ECD2B.ch
 Acq On : 23 Jun 2022 05:33
 Operator : YP/AJ
 Sample : N3449-04 10X
 Misc :
 ALS Vial : 46 Sample Multiplier: 1

Instrument :
 ECD_O
 ClientSampleId :

Integration File signal 1: autoint1.e
 Integration File signal 2: autoint2.e
 Quant Time: Jun 23 07:50:58 2022
 Quant Method : Z:\pestpcbsrv\HPCHEM1\ECD_O\methods\PO060922.M
 Quant Title : GC EXTRACTABLES
 QLast Update : Fri Jun 10 04:33:49 2022
 Response via : Initial Calibration
 Integrator: ChemStation

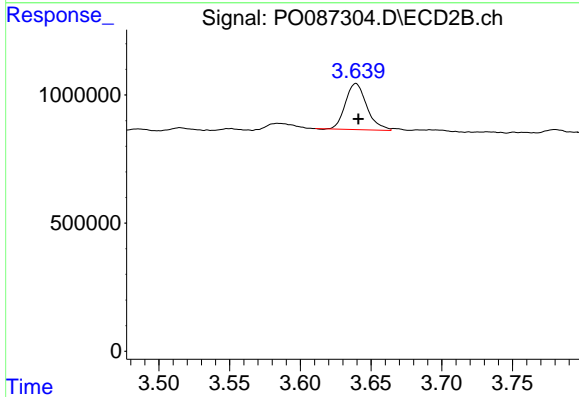
Volume Inj. : 2 µl
 Signal #1 Phase : ZB-MR1 Signal #2 Phase: ZB-MR2
 Signal #1 Info : 30Mx0.32mmx 0.50µ Signal #2 Info : 30M x 0.32mm x 0.25µm



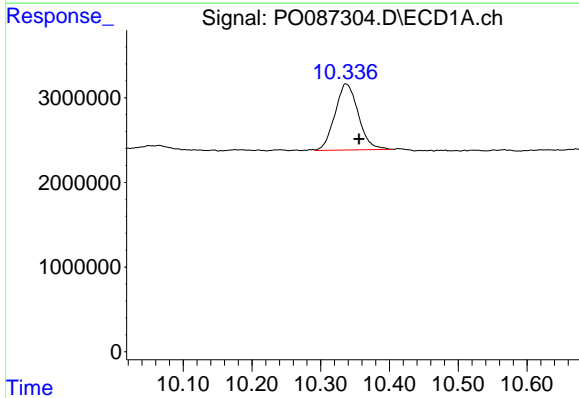


#1 Tetrachloro-m-xylene
 R.T.: 4.491 min
 Delta R.T.: -0.002 min
 Response: 3105809
 Conc: 1.33 ng/ml

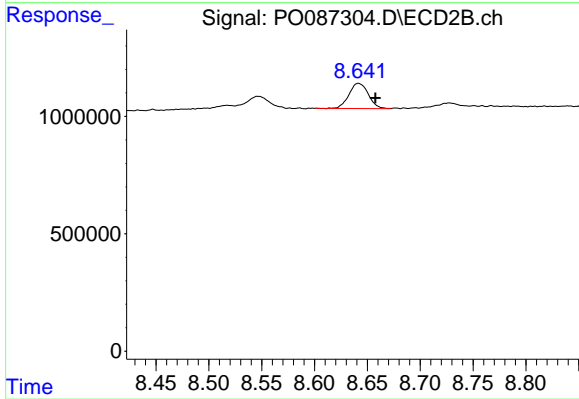
Instrument :
 ECD_O
 ClientSampleId :



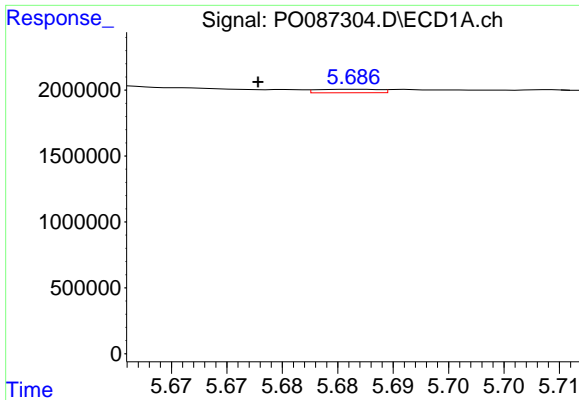
#1 Tetrachloro-m-xylene
 R.T.: 3.639 min
 Delta R.T.: -0.002 min
 Response: 1893539
 Conc: 1.68 ng/ml



#2 Decachlorobiphenyl
 R.T.: 10.336 min
 Delta R.T.: -0.019 min
 Response: 18373752
 Conc: 9.98 ng/ml



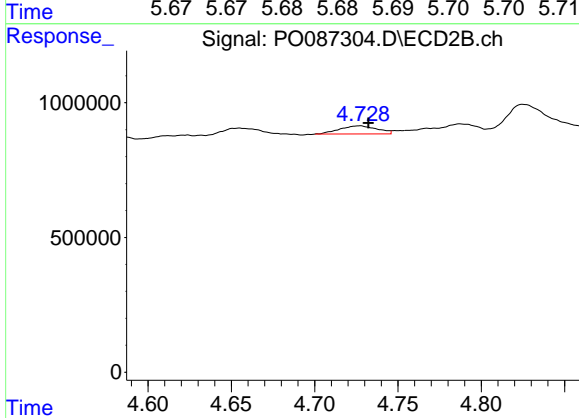
#2 Decachlorobiphenyl
 R.T.: 8.641 min
 Delta R.T.: -0.016 min
 Response: 1366392
 Conc: 1.74 ng/ml



#3 AR-1016-1

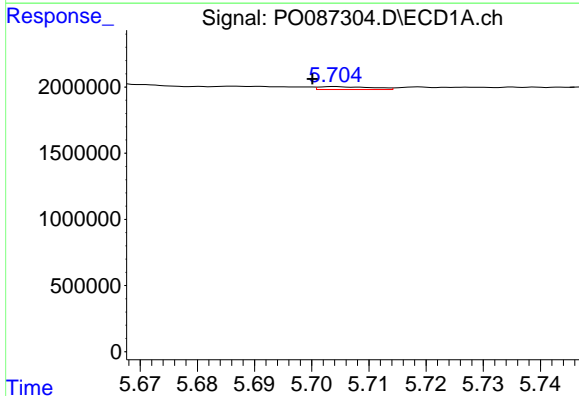
R.T.: 5.687 min
 Delta R.T.: 0.009 min
 Response: 104004
 Conc: 1.24 ng/ml

Instrument :
 ECD_O
 ClientSampleId :



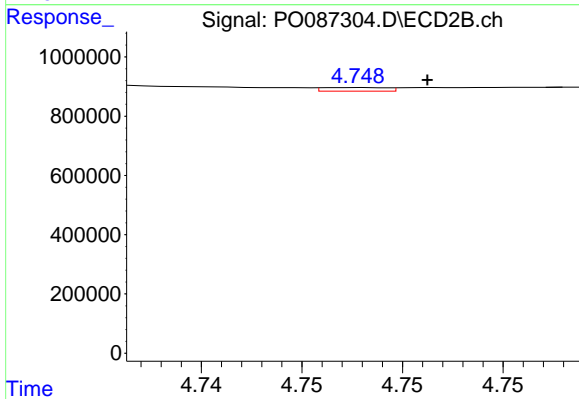
#3 AR-1016-1

R.T.: 4.727 min
 Delta R.T.: -0.005 min
 Response: 464906
 Conc: 13.81 ng/ml



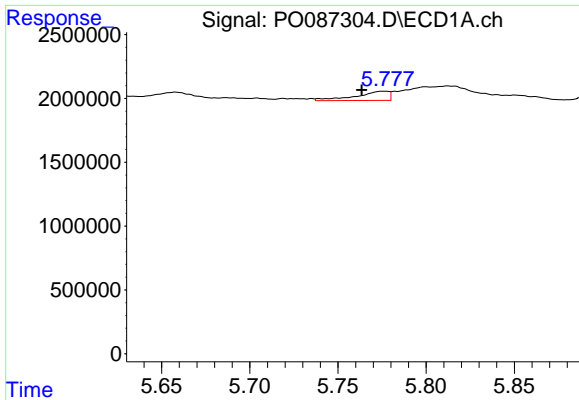
#4 AR-1016-2

R.T.: 5.704 min
 Delta R.T.: 0.004 min
 Response: 141965
 Conc: 1.21 ng/ml



#4 AR-1016-2

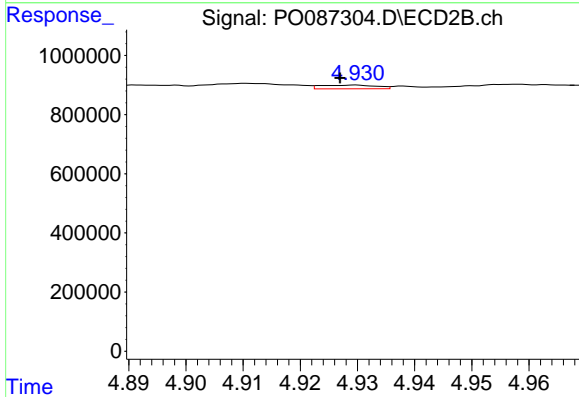
R.T.: 4.748 min
 Delta R.T.: -0.003 min
 Response: 26749
 Conc: 0.58 ng/ml



#5 AR-1016-3

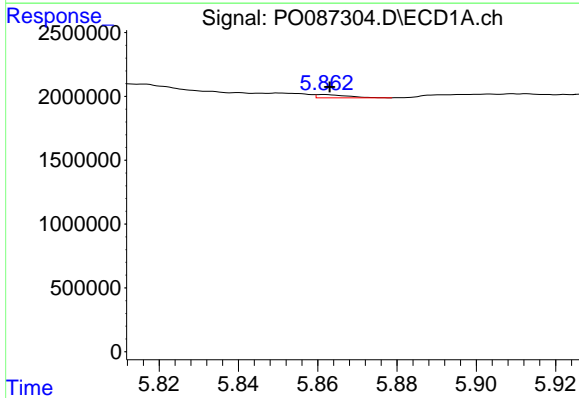
R.T.: 5.777 min
 Delta R.T.: 0.013 min
 Response: 955550
 Conc: 12.69 ng/ml

Instrument :
 ECD_O
 ClientSampleId :



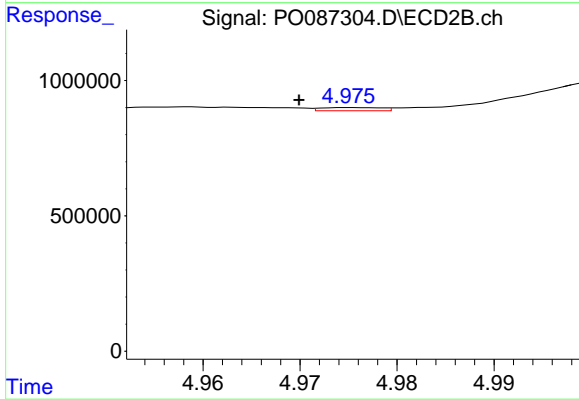
#5 AR-1016-3

R.T.: 4.930 min
 Delta R.T.: 0.003 min
 Response: 84912
 Conc: 3.31 ng/ml



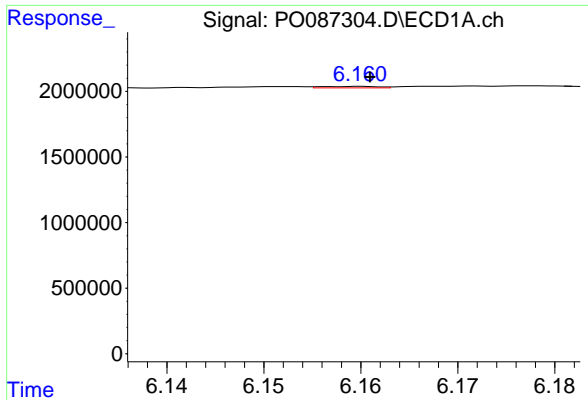
#6 AR-1016-4

R.T.: 5.862 min
 Delta R.T.: -0.001 min
 Response: 137723
 Conc: 2.30 ng/ml



#6 AR-1016-4

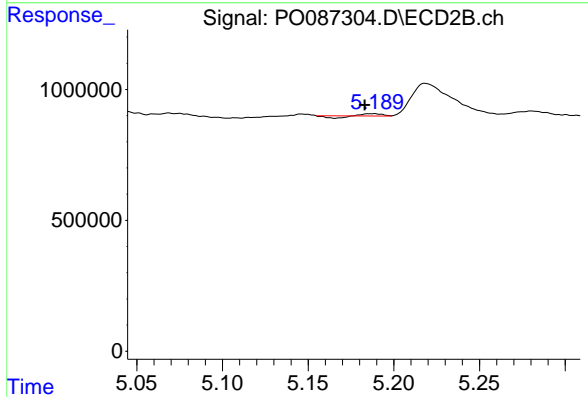
R.T.: 4.975 min
 Delta R.T.: 0.005 min
 Response: 52416
 Conc: 2.57 ng/ml



#7 AR-1016-5

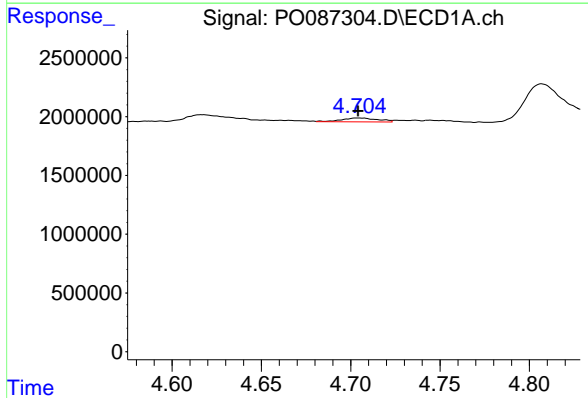
R.T.: 6.160 min
 Delta R.T.: 0.000 min
 Response: 45845
 Conc: 0.78 ng/ml

Instrument :
 ECD_O
 ClientSampleId :



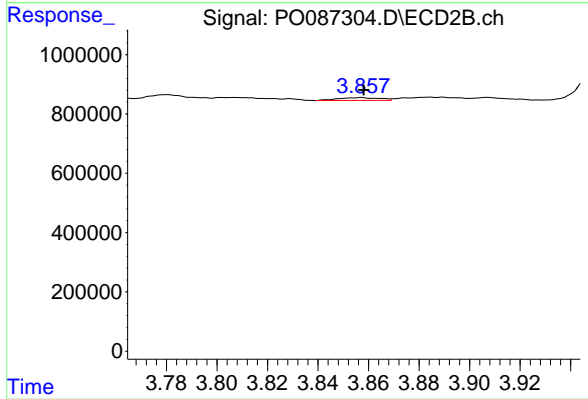
#7 AR-1016-5

R.T.: 5.189 min
 Delta R.T.: 0.006 min
 Response: 11769
 Conc: 0.46 ng/ml



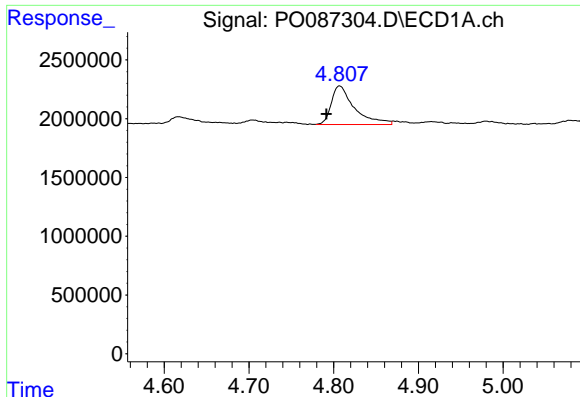
#8 AR-1221-1

R.T.: 4.704 min
 Delta R.T.: 0.000 min
 Response: 468360
 Conc: 16.73 ng/ml



#8 AR-1221-1

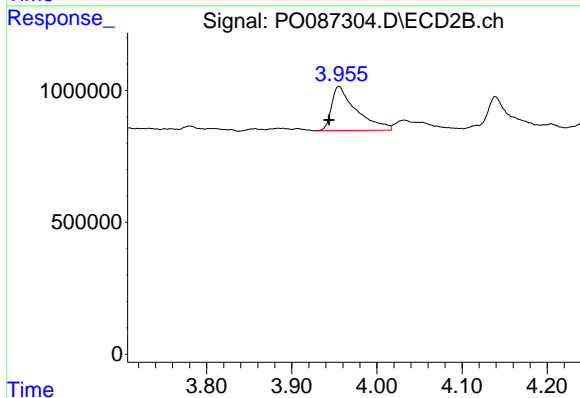
R.T.: 3.857 min
 Delta R.T.: 0.000 min
 Response: 108636
 Conc: 8.20 ng/ml



#9 AR-1221-2

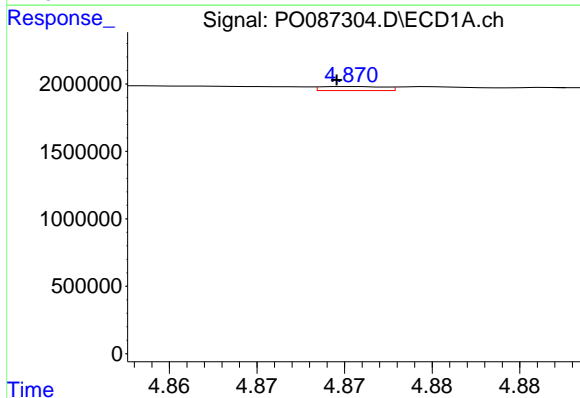
R.T.: 4.807 min
 Delta R.T.: 0.016 min
 Response: 6221191
 Conc: 294.64 ng/ml

Instrument :
 ECD_O
 ClientSampleId :



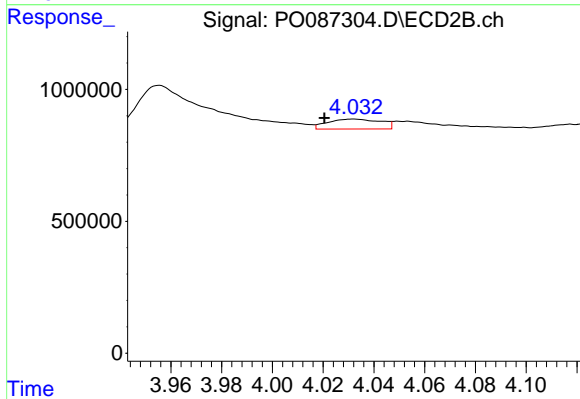
#9 AR-1221-2

R.T.: 3.956 min
 Delta R.T.: 0.012 min
 Response: 3379611
 Conc: 340.42 ng/ml



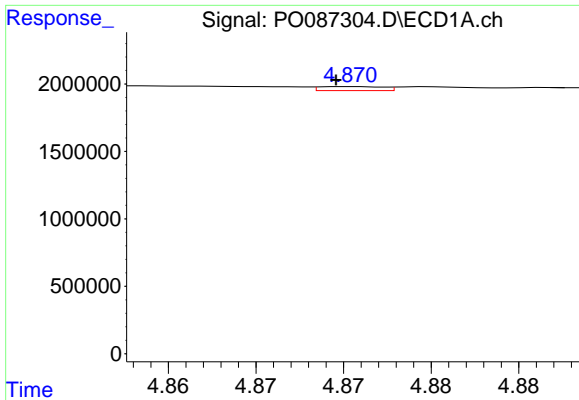
#10 AR-1221-3

R.T.: 4.870 min
 Delta R.T.: 0.000 min
 Response: 75155
 Conc: 1.16 ng/ml



#10 AR-1221-3

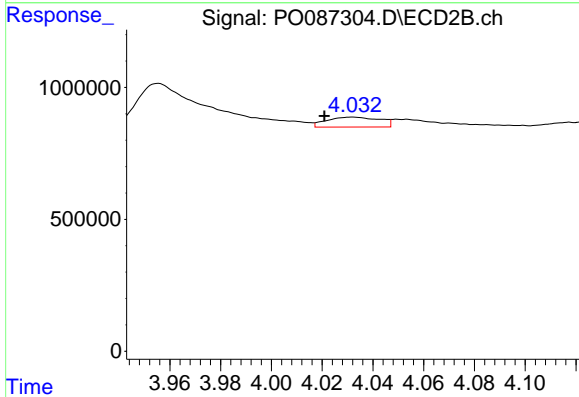
R.T.: 4.032 min
 Delta R.T.: 0.012 min
 Response: 546602
 Conc: 18.79 ng/ml



#11 AR-1232-1

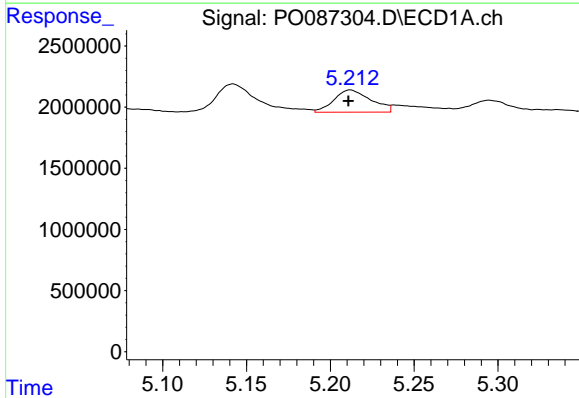
R.T.: 4.870 min
 Delta R.T.: 0.000 min
 Response: 75155
 Conc: 1.28 ng/ml

Instrument :
 ECD_O
 ClientSampleId :



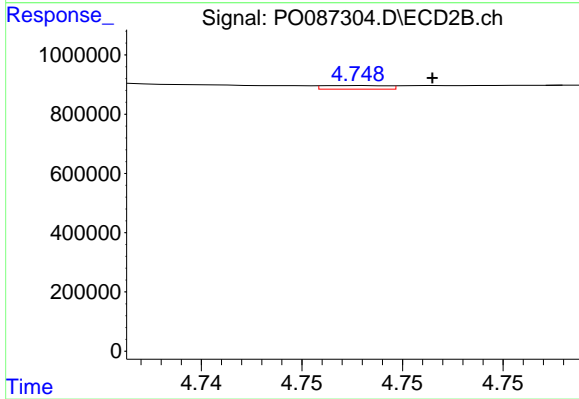
#11 AR-1232-1

R.T.: 4.032 min
 Delta R.T.: 0.011 min
 Response: 546602
 Conc: 20.49 ng/ml



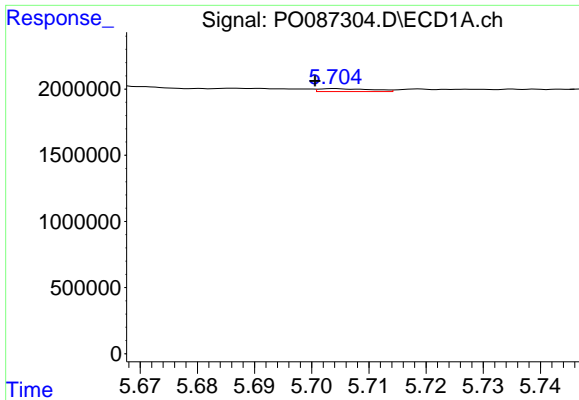
#12 AR-1232-2

R.T.: 5.212 min
 Delta R.T.: 0.001 min
 Response: 2804913
 Conc: 96.91 ng/ml



#12 AR-1232-2

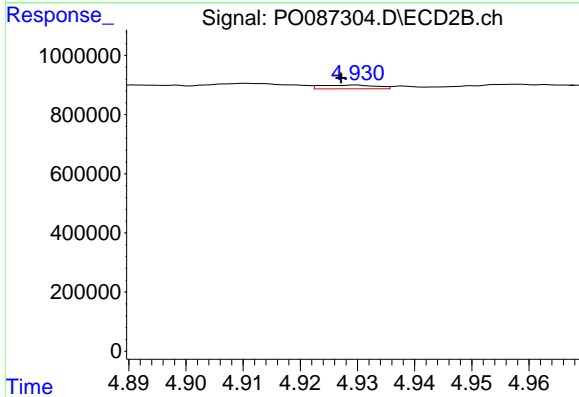
R.T.: 4.748 min
 Delta R.T.: -0.004 min
 Response: 26749
 Conc: 1.23 ng/ml



#13 AR-1232-3

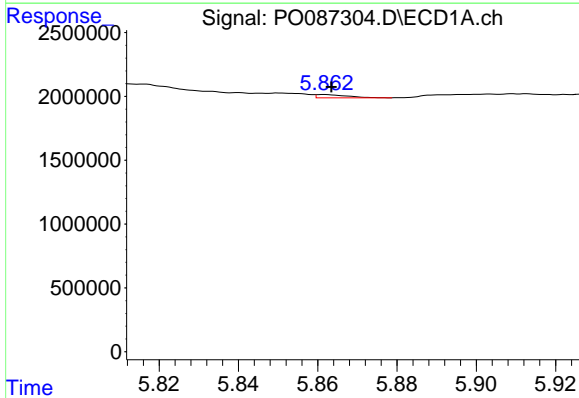
R.T.: 5.704 min
 Delta R.T.: 0.003 min
 Response: 141965
 Conc: 2.64 ng/ml

Instrument :
 ECD_O
 ClientSampleId :



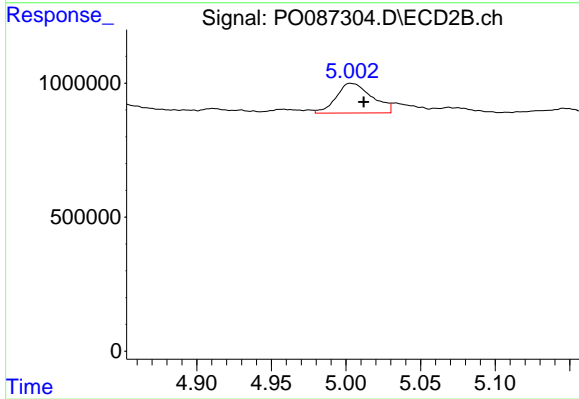
#13 AR-1232-3

R.T.: 4.930 min
 Delta R.T.: 0.003 min
 Response: 84912
 Conc: 7.48 ng/ml



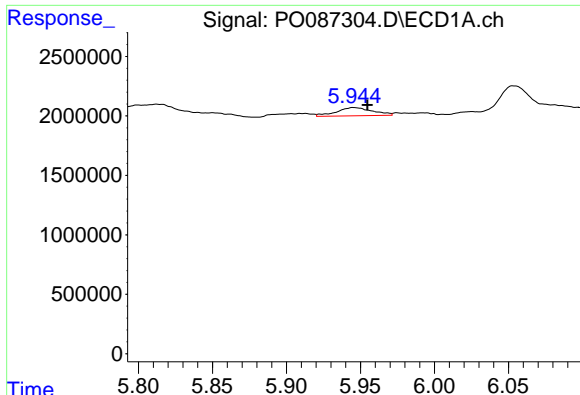
#14 AR-1232-4

R.T.: 5.862 min
 Delta R.T.: -0.002 min
 Response: 137723
 Conc: 5.13 ng/ml



#14 AR-1232-4

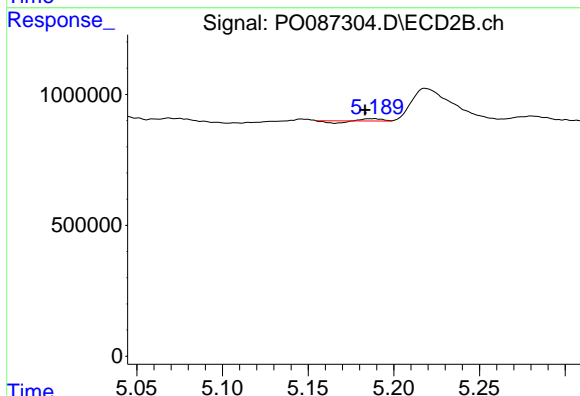
R.T.: 5.003 min
 Delta R.T.: -0.009 min
 Response: 1853814
 Conc: 181.34 ng/ml



#15 AR-1232-5

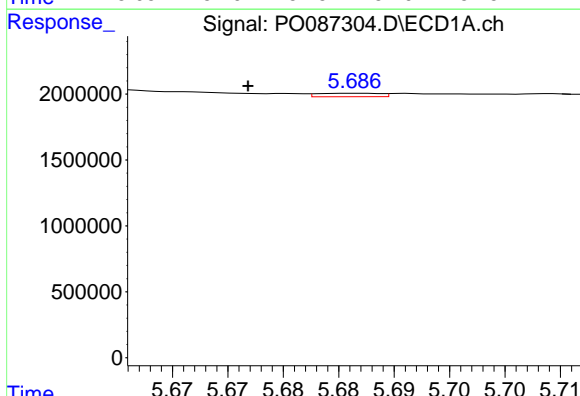
R.T.: 5.945 min
 Delta R.T.: -0.010 min
 Response: 1181006
 Conc: 53.13 ng/ml

Instrument :
 ECD_O
 ClientSampleId :



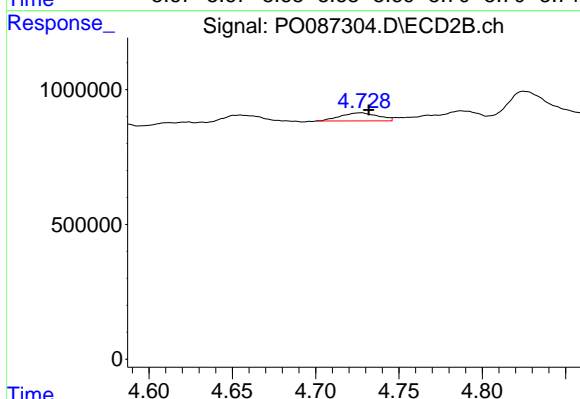
#15 AR-1232-5

R.T.: 5.189 min
 Delta R.T.: 0.005 min
 Response: 11769
 Conc: 1.04 ng/ml



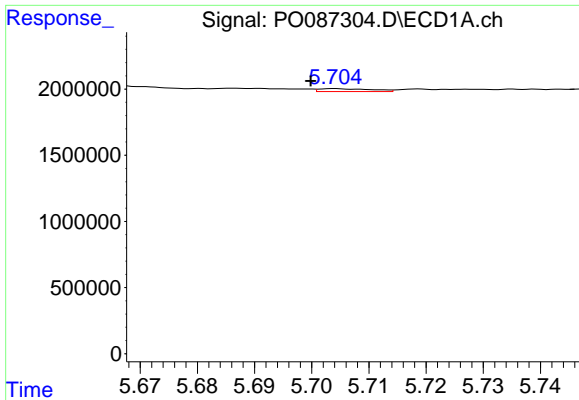
#16 AR-1242-1

R.T.: 5.687 min
 Delta R.T.: 0.010 min
 Response: 104004
 Conc: 1.62 ng/ml



#16 AR-1242-1

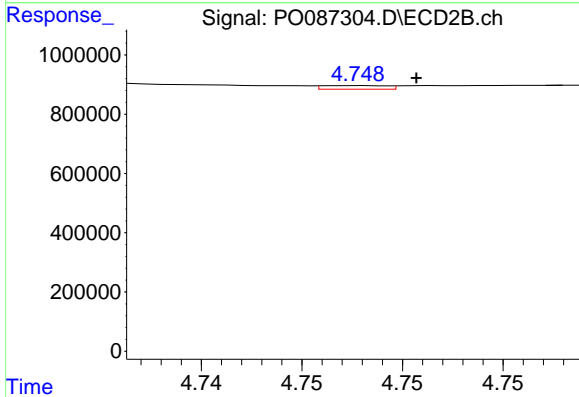
R.T.: 4.727 min
 Delta R.T.: -0.004 min
 Response: 464906
 Conc: 17.56 ng/ml



#17 AR-1242-2

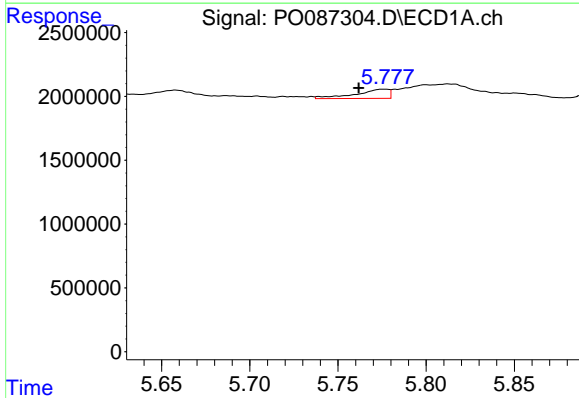
R.T.: 5.704 min
 Delta R.T.: 0.004 min
 Response: 141965
 Conc: 1.55 ng/ml

Instrument :
 ECD_O
 ClientSampleId :



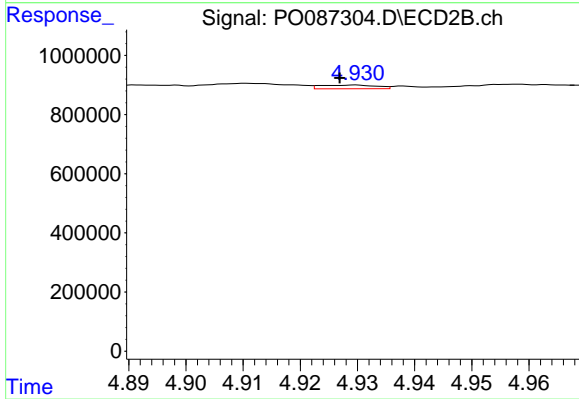
#17 AR-1242-2

R.T.: 4.748 min
 Delta R.T.: -0.003 min
 Response: 26749
 Conc: 0.74 ng/ml



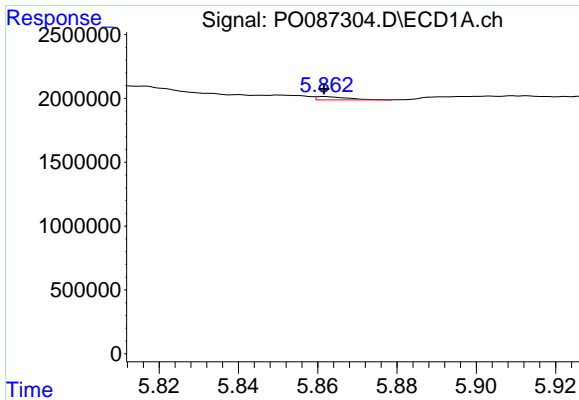
#18 AR-1242-3

R.T.: 5.777 min
 Delta R.T.: 0.015 min
 Response: 955550
 Conc: 16.28 ng/ml



#18 AR-1242-3

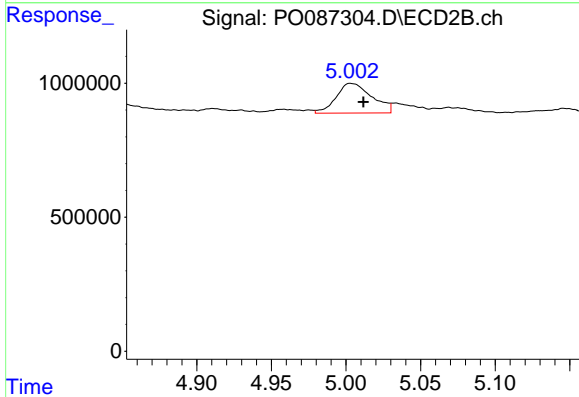
R.T.: 4.930 min
 Delta R.T.: 0.003 min
 Response: 84912
 Conc: 4.25 ng/ml



#19 AR-1242-4

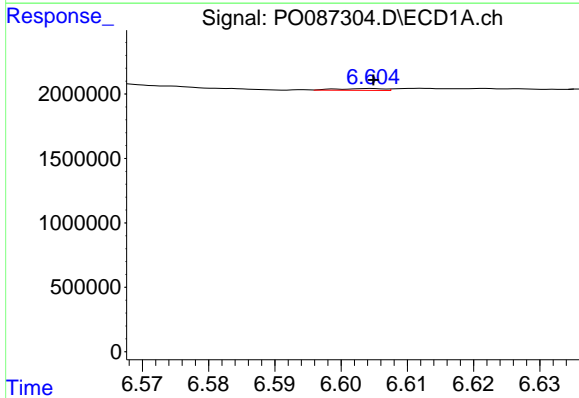
R.T.: 5.862 min
 Delta R.T.: 0.000 min
 Response: 137723
 Conc: 2.96 ng/ml

Instrument :
 ECD_O
 ClientSampleId :



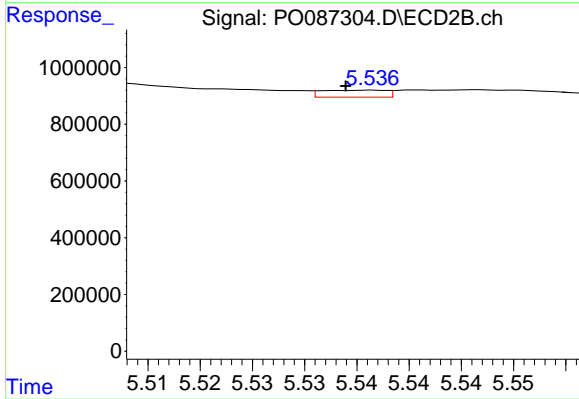
#19 AR-1242-4

R.T.: 5.003 min
 Delta R.T.: -0.009 min
 Response: 1853814
 Conc: 94.84 ng/ml



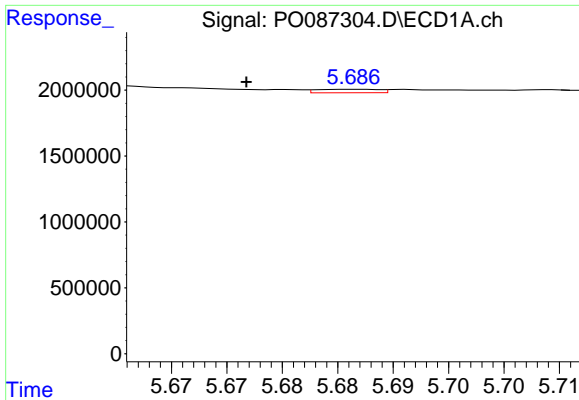
#20 AR-1242-5

R.T.: 6.605 min
 Delta R.T.: 0.000 min
 Response: 71596
 Conc: 1.51 ng/ml



#20 AR-1242-5

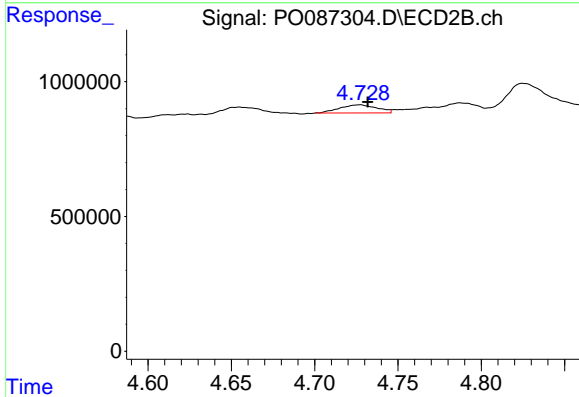
R.T.: 5.537 min
 Delta R.T.: 0.003 min
 Response: 104980
 Conc: 4.50 ng/ml



#21 AR-1248-1

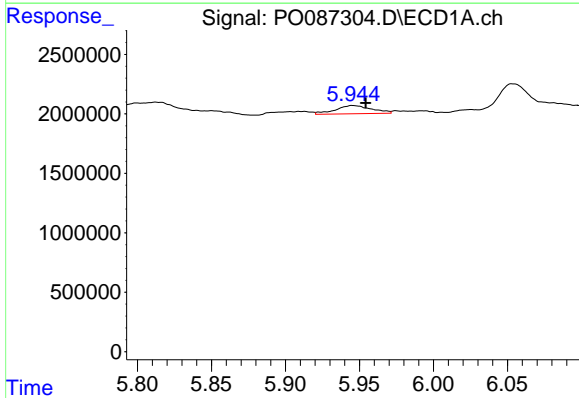
R.T.: 5.687 min
 Delta R.T.: 0.010 min
 Response: 104004
 Conc: 2.14 ng/ml

Instrument :
 ECD_O
 ClientSampleId :



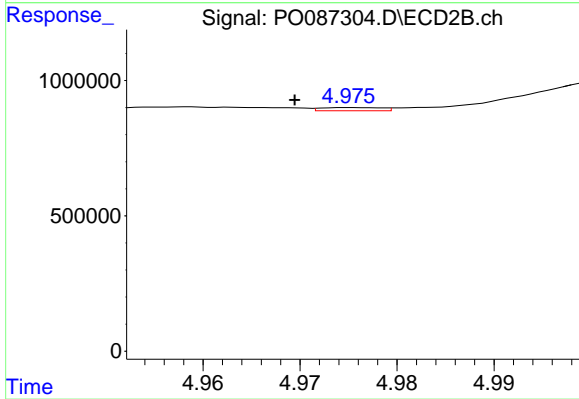
#21 AR-1248-1

R.T.: 4.727 min
 Delta R.T.: -0.004 min
 Response: 464906
 Conc: 23.50 ng/ml



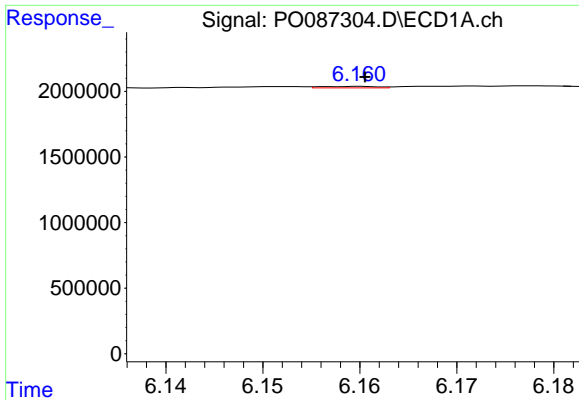
#22 AR-1248-2

R.T.: 5.945 min
 Delta R.T.: -0.009 min
 Response: 1181006
 Conc: 16.58 ng/ml



#22 AR-1248-2

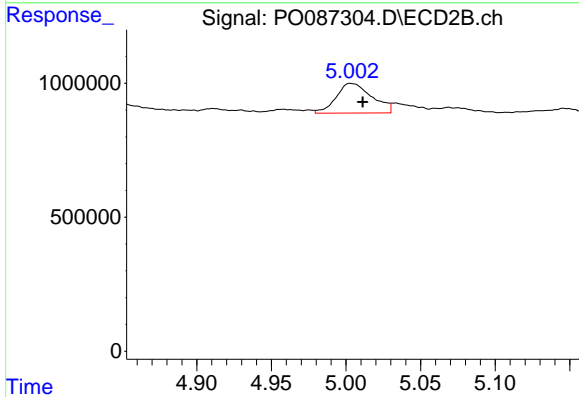
R.T.: 4.975 min
 Delta R.T.: 0.006 min
 Response: 52416
 Conc: 1.93 ng/ml



#23 AR-1248-3

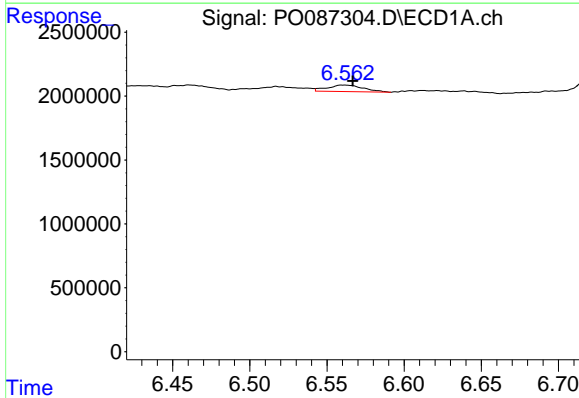
R.T.: 6.160 min
 Delta R.T.: 0.000 min
 Response: 45845
 Conc: 0.60 ng/ml

Instrument :
 ECD_O
 ClientSampleId :



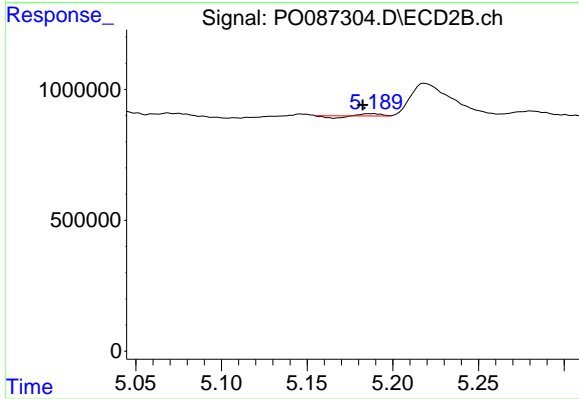
#23 AR-1248-3

R.T.: 5.003 min
 Delta R.T.: -0.008 min
 Response: 1853814
 Conc: 64.87 ng/ml



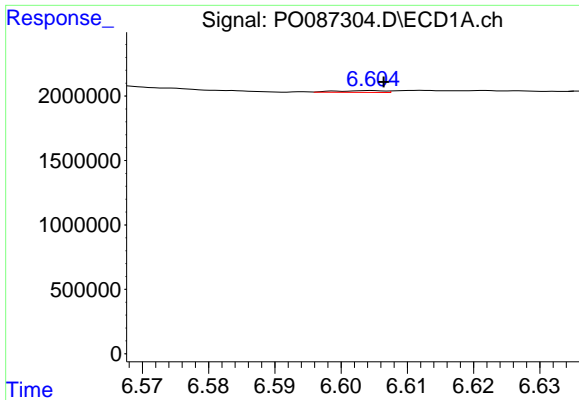
#24 AR-1248-4

R.T.: 6.559 min
 Delta R.T.: -0.007 min
 Response: 834284
 Conc: 10.02 ng/ml



#24 AR-1248-4

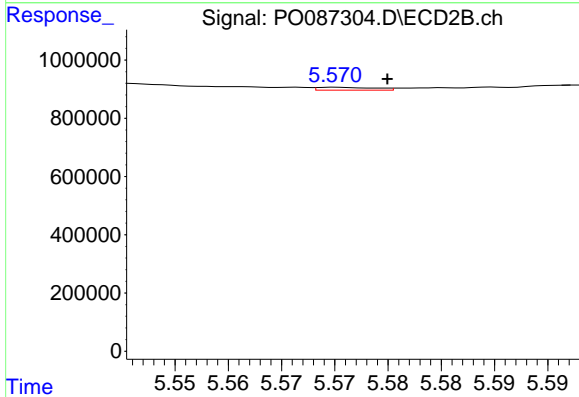
R.T.: 5.189 min
 Delta R.T.: 0.006 min
 Response: 11769
 Conc: 0.36 ng/ml



#25 AR-1248-5

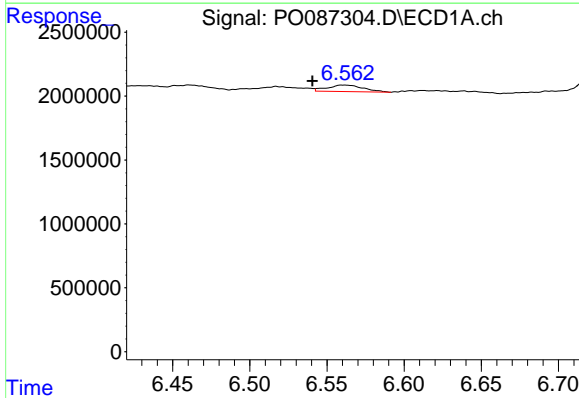
R.T.: 6.605 min
 Delta R.T.: -0.002 min
 Response: 71596
 Conc: 0.89 ng/ml

Instrument :
 ECD_O
 ClientSampleId :



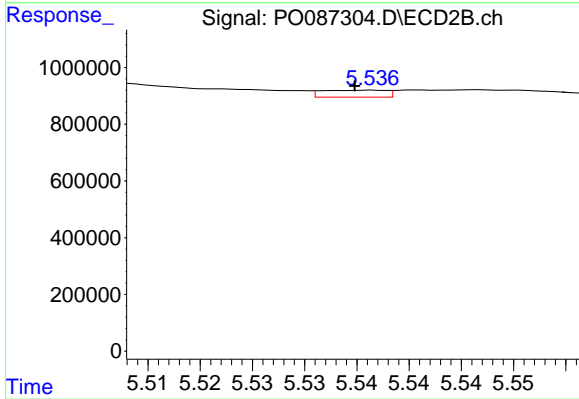
#25 AR-1248-5

R.T.: 5.570 min
 Delta R.T.: -0.005 min
 Response: 37630
 Conc: 1.18 ng/ml



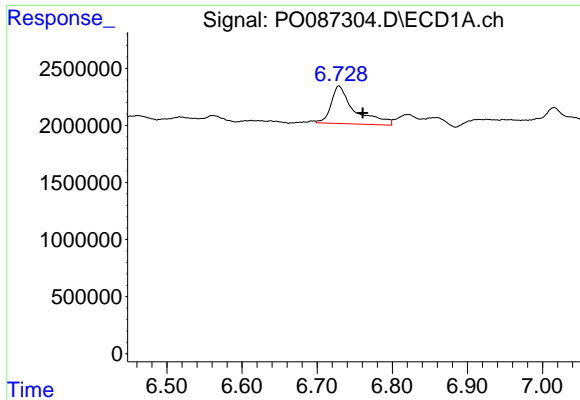
#26 AR-1254-1

R.T.: 6.559 min
 Delta R.T.: 0.019 min
 Response: 834284
 Conc: 9.57 ng/ml



#26 AR-1254-1

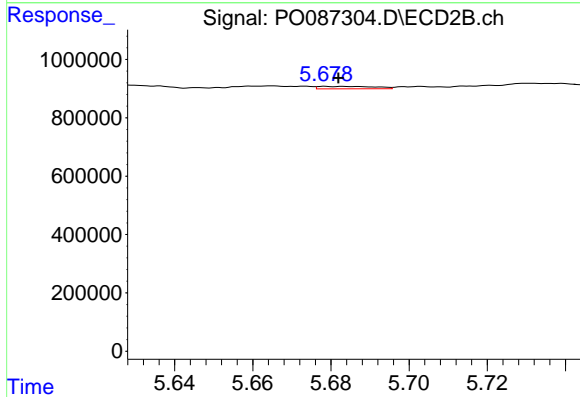
R.T.: 5.537 min
 Delta R.T.: 0.002 min
 Response: 104980
 Conc: 2.17 ng/ml



#27 AR-1254-2

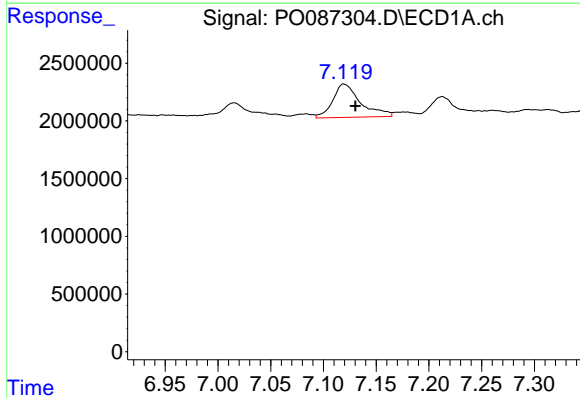
R.T.: 6.729 min
 Delta R.T.: -0.032 min
 Response: 7073930
 Conc: 54.17 ng/ml

Instrument :
 ECD_O
 ClientSampleId :



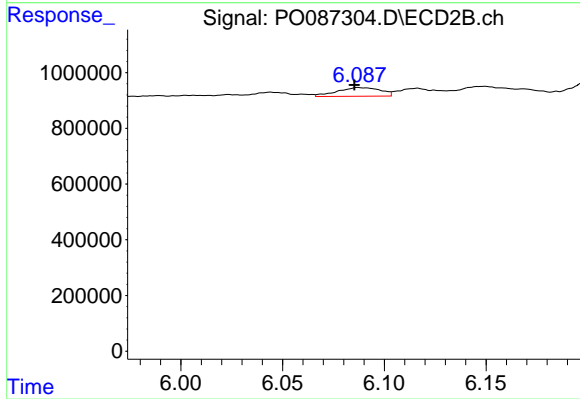
#27 AR-1254-2

R.T.: 5.679 min
 Delta R.T.: -0.003 min
 Response: 82600
 Conc: 1.94 ng/ml



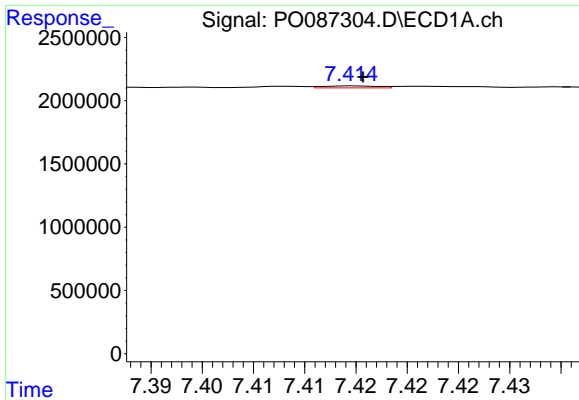
#28 AR-1254-3

R.T.: 7.119 min
 Delta R.T.: -0.011 min
 Response: 5279917
 Conc: 40.47 ng/ml



#28 AR-1254-3

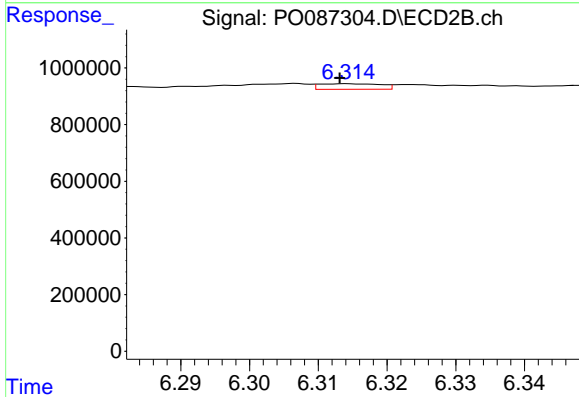
R.T.: 6.087 min
 Delta R.T.: 0.002 min
 Response: 458015
 Conc: 6.70 ng/ml



#29 AR-1254-4

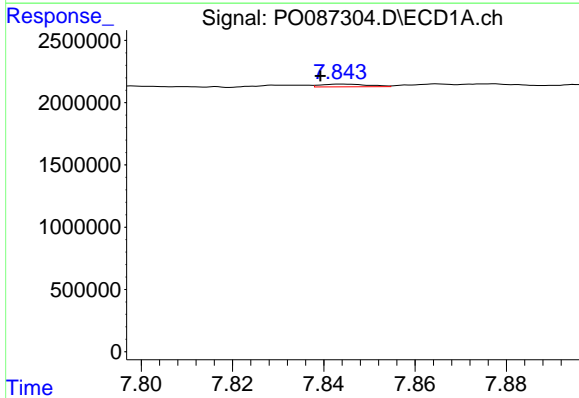
R.T.: 7.415 min
 Delta R.T.: 0.000 min
 Response: 59443
 Conc: 0.62 ng/ml

Instrument :
 ECD_O
 ClientSampleId :



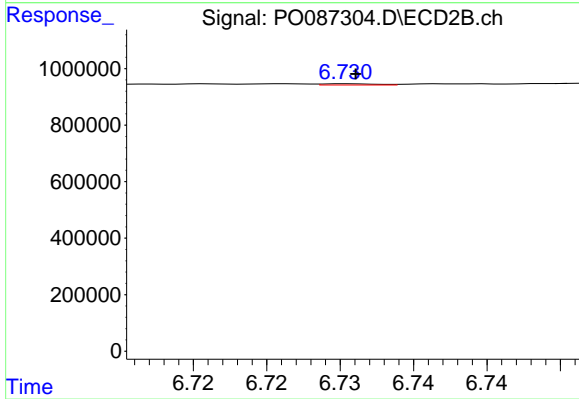
#29 AR-1254-4

R.T.: 6.314 min
 Delta R.T.: 0.001 min
 Response: 121145
 Conc: 2.87 ng/ml



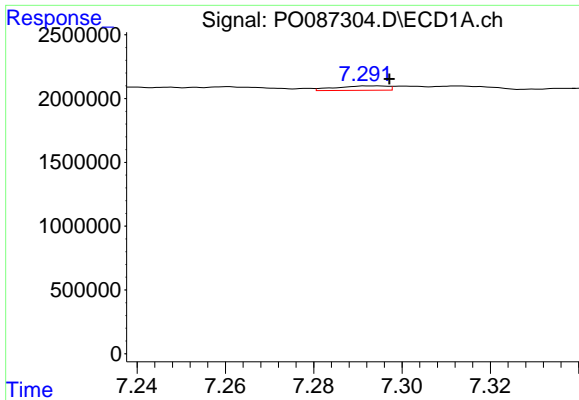
#30 AR-1254-5

R.T.: 7.844 min
 Delta R.T.: 0.004 min
 Response: 161425
 Conc: 1.55 ng/ml



#30 AR-1254-5

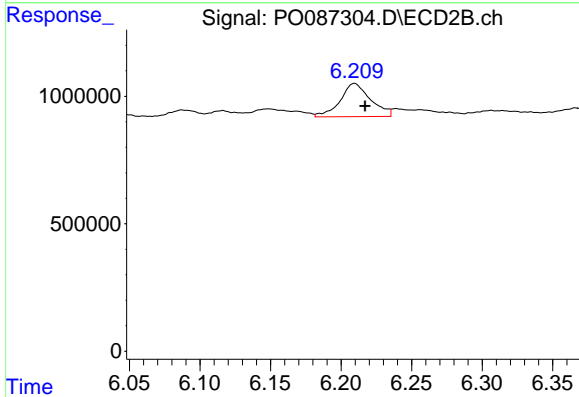
R.T.: 6.731 min
 Delta R.T.: 0.000 min
 Response: 10815
 Conc: 0.18 ng/ml



#31 AR-1260-1

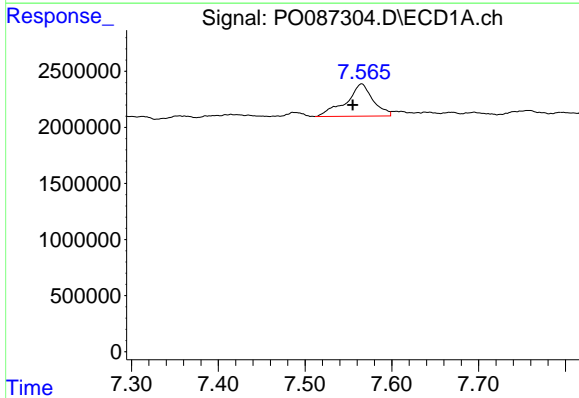
R.T.: 7.294 min
 Delta R.T.: -0.003 min
 Response: 282029
 Conc: 2.80 ng/ml

Instrument :
 ECD_O
 ClientSampleId :



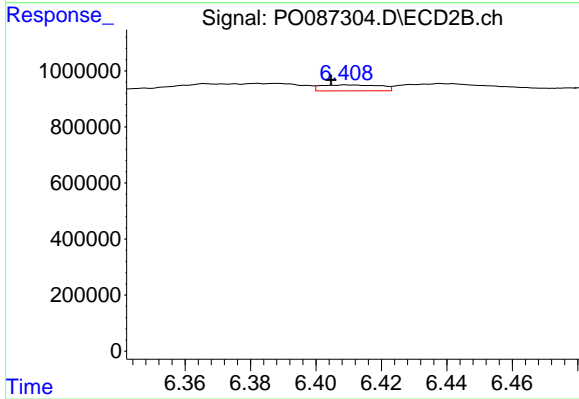
#31 AR-1260-1

R.T.: 6.210 min
 Delta R.T.: -0.007 min
 Response: 1951359
 Conc: 41.66 ng/ml



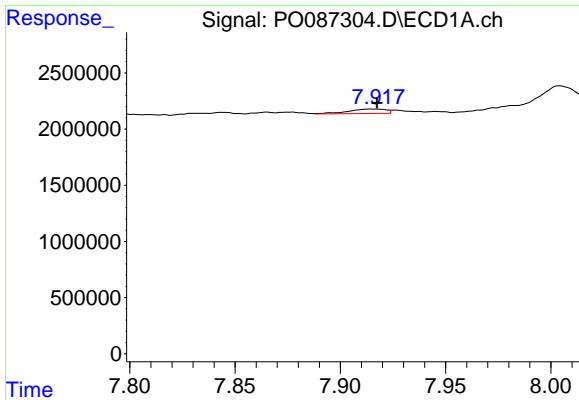
#32 AR-1260-2

R.T.: 7.565 min
 Delta R.T.: 0.010 min
 Response: 6194901
 Conc: 52.56 ng/ml



#32 AR-1260-2

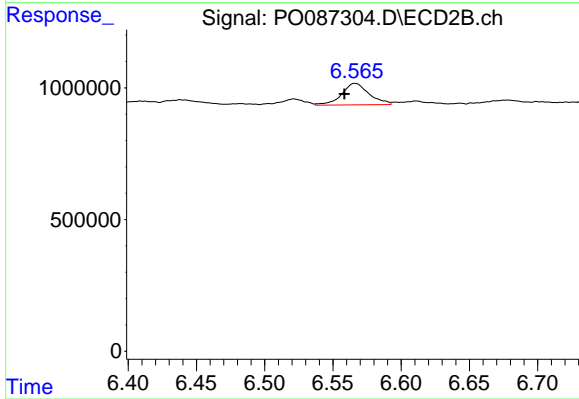
R.T.: 6.409 min
 Delta R.T.: 0.004 min
 Response: 266388
 Conc: 4.76 ng/ml



#33 AR-1260-3

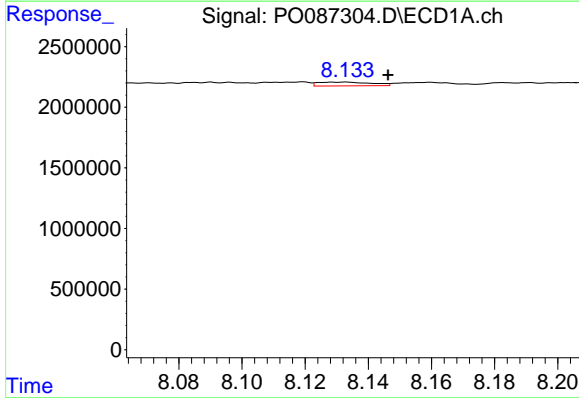
R.T.: 7.917 min
 Delta R.T.: 0.000 min
 Response: 497861
 Conc: 5.87 ng/ml

Instrument :
 ECD_O
 ClientSampleId :



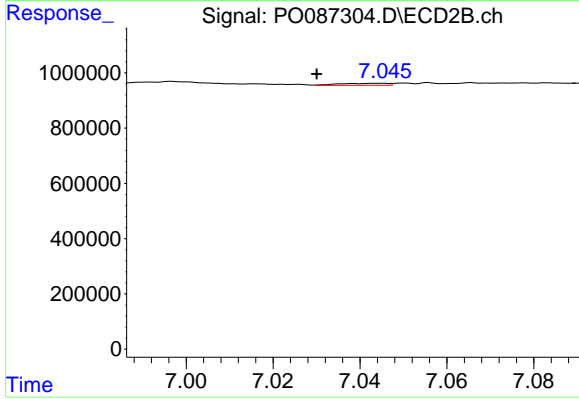
#33 AR-1260-3

R.T.: 6.566 min
 Delta R.T.: 0.008 min
 Response: 1152240
 Conc: 21.65 ng/ml



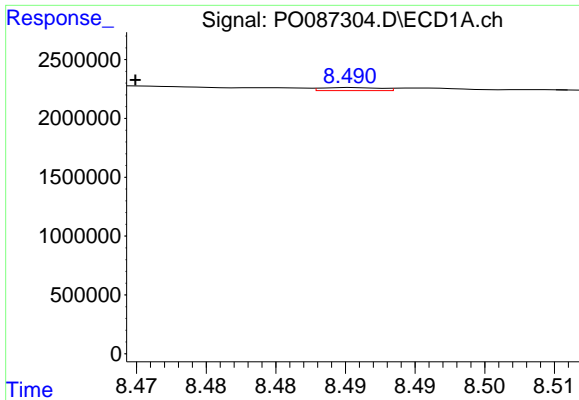
#34 AR-1260-4

R.T.: 8.133 min
 Delta R.T.: -0.013 min
 Response: 376617
 Conc: 3.70 ng/ml



#34 AR-1260-4

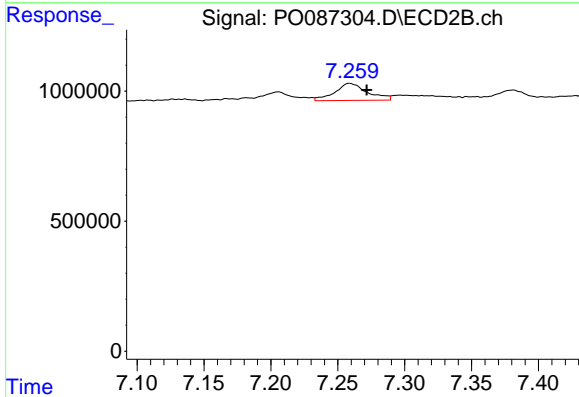
R.T.: 7.045 min
 Delta R.T.: 0.015 min
 Response: 56803
 Conc: 1.41 ng/ml



#35 AR-1260-5

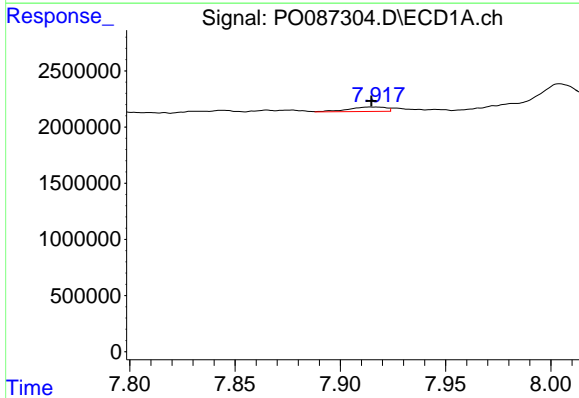
R.T.: 8.491 min
 Delta R.T.: 0.016 min
 Response: 76128
 Conc: 0.42 ng/ml

Instrument :
 ECD_O
 ClientSampleId :



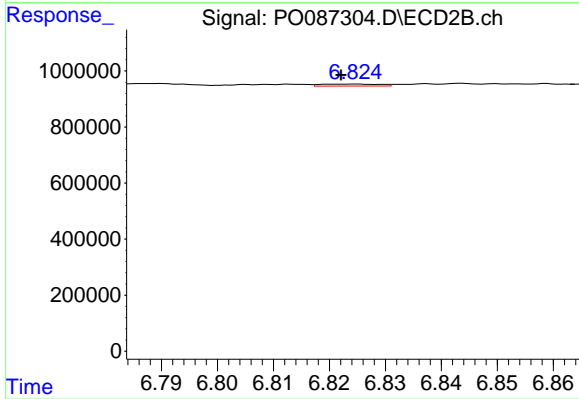
#35 AR-1260-5

R.T.: 7.259 min
 Delta R.T.: -0.013 min
 Response: 1111236
 Conc: 11.85 ng/ml



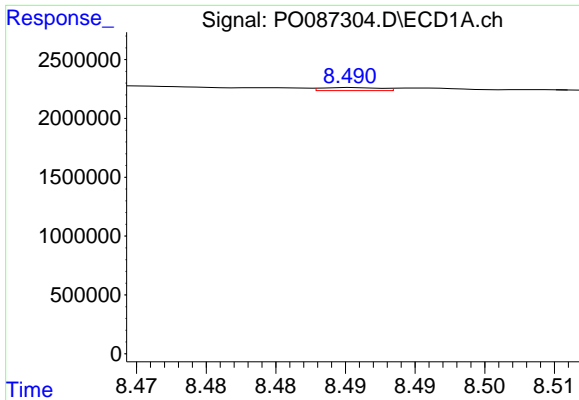
#36 AR-1262-1

R.T.: 7.917 min
 Delta R.T.: 0.003 min
 Response: 497861
 Conc: 4.05 ng/ml



#36 AR-1262-1

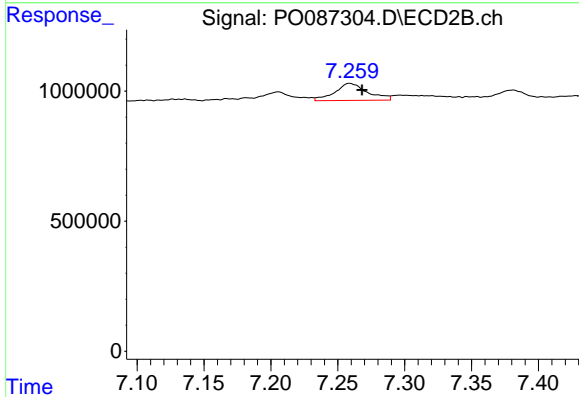
R.T.: 6.825 min
 Delta R.T.: 0.003 min
 Response: 54178
 Conc: 2.24 ng/ml



#37 AR-1262-2

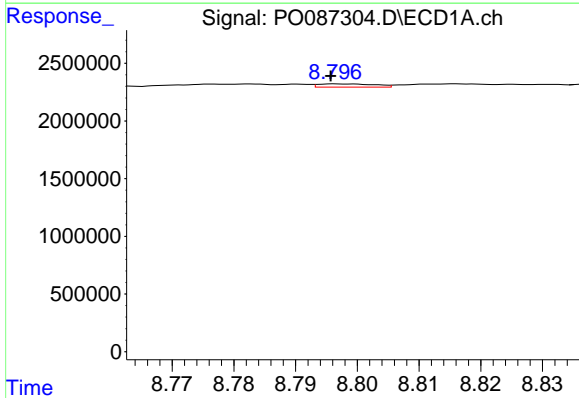
R.T.: 8.491 min
 Delta R.T.: 0.019 min
 Response: 76128
 Conc: 0.37 ng/ml

Instrument :
 ECD_O
 ClientSampleId :



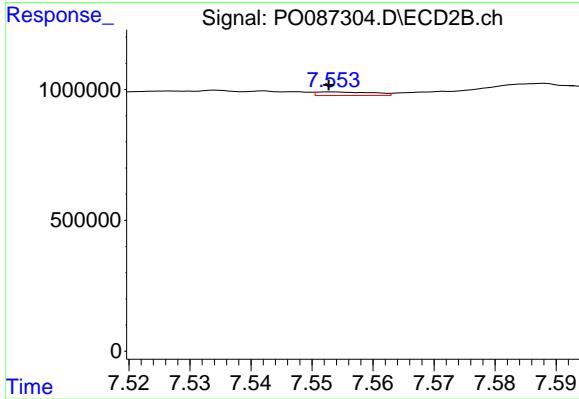
#37 AR-1262-2

R.T.: 7.259 min
 Delta R.T.: -0.009 min
 Response: 1111236
 Conc: 11.00 ng/ml



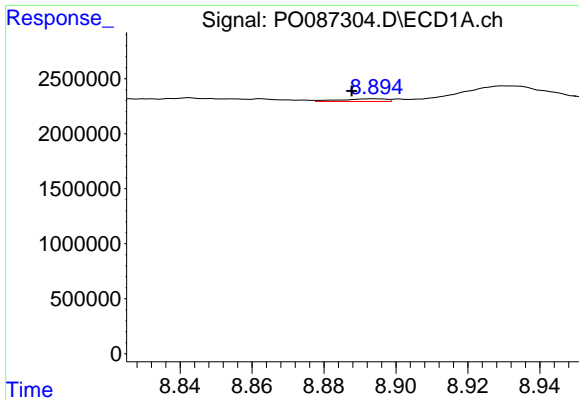
#38 AR-1262-3

R.T.: 8.797 min
 Delta R.T.: 0.000 min
 Response: 177491
 Conc: 1.23 ng/ml



#38 AR-1262-3

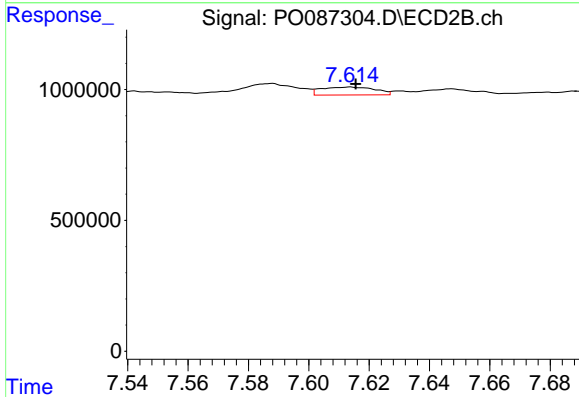
R.T.: 7.553 min
 Delta R.T.: 0.000 min
 Response: 89157
 Conc: 2.20 ng/ml



#39 AR-1262-4

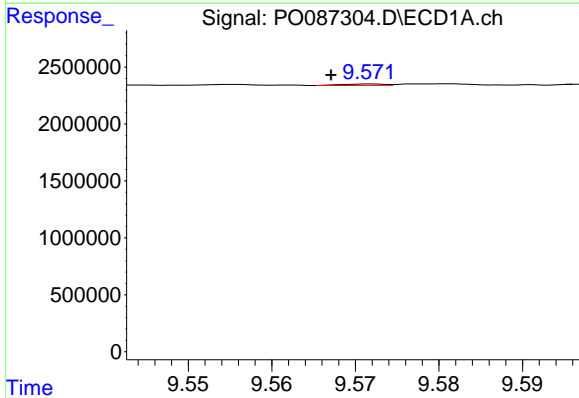
R.T.: 8.894 min
 Delta R.T.: 0.007 min
 Response: 219875
 Conc: 3.11 ng/ml

Instrument :
 ECD_O
 ClientSampleId :



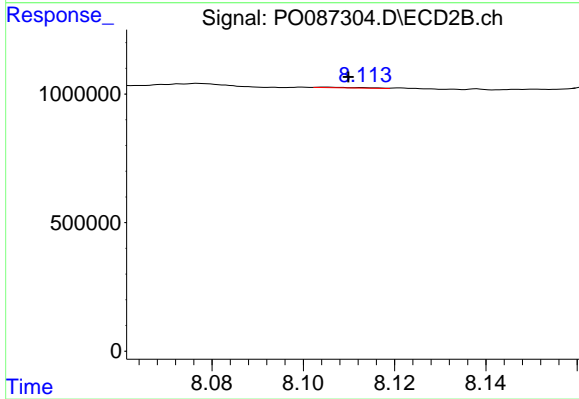
#39 AR-1262-4

R.T.: 7.614 min
 Delta R.T.: -0.002 min
 Response: 374704
 Conc: 5.01 ng/ml



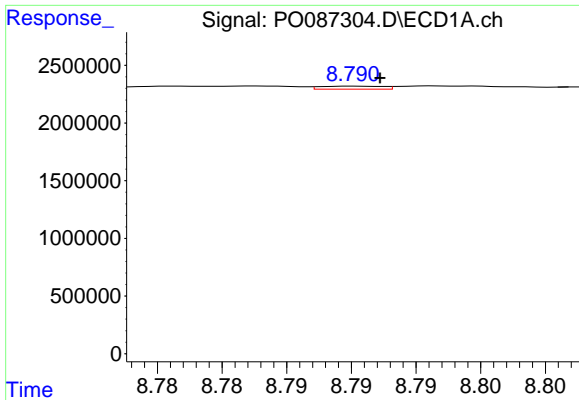
#40 AR-1262-5

R.T.: 9.572 min
 Delta R.T.: 0.005 min
 Response: 44873
 Conc: 0.58 ng/ml



#40 AR-1262-5

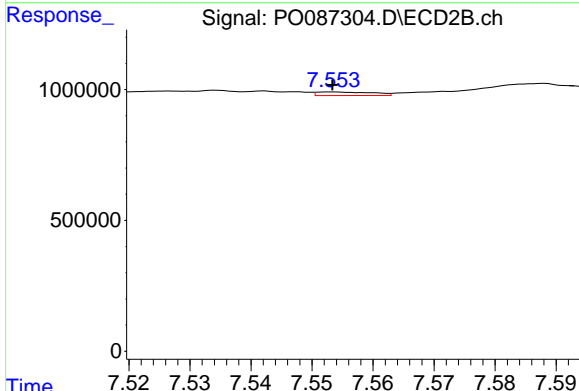
R.T.: 8.105 min
 Delta R.T.: -0.005 min
 Response: 14668
 Conc: 0.43 ng/ml



#41 AR-1268-1

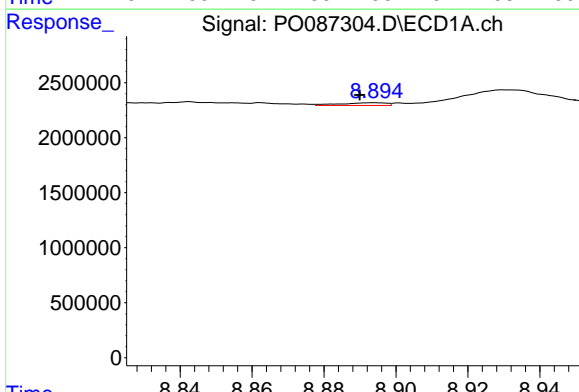
R.T.: 8.790 min
 Delta R.T.: -0.002 min
 Response: 86658
 Conc: 0.34 ng/ml

Instrument :
 ECD_O
 ClientSampleId :



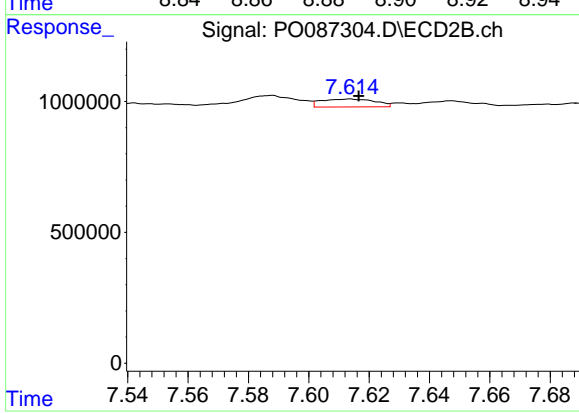
#41 AR-1268-1

R.T.: 7.553 min
 Delta R.T.: 0.000 min
 Response: 89157
 Conc: 0.75 ng/ml



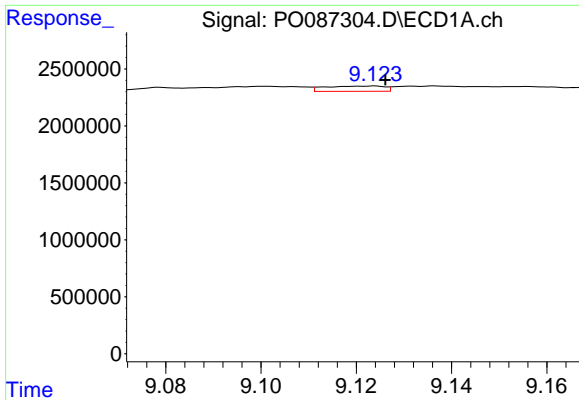
#42 AR-1268-2

R.T.: 8.894 min
 Delta R.T.: 0.004 min
 Response: 219875
 Conc: 0.93 ng/ml



#42 AR-1268-2

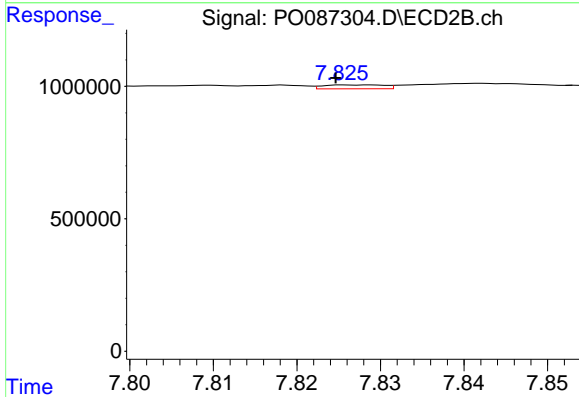
R.T.: 7.614 min
 Delta R.T.: -0.003 min
 Response: 374704
 Conc: 3.44 ng/ml



#43 AR-1268-3

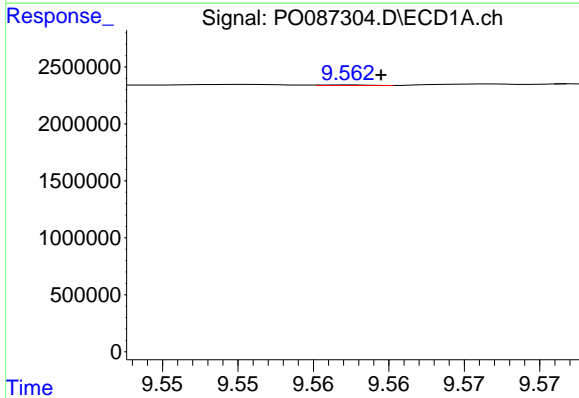
R.T.: 9.124 min
 Delta R.T.: -0.002 min
 Response: 398638
 Conc: 1.99 ng/ml

Instrument :
 ECD_O
 ClientSampleId :



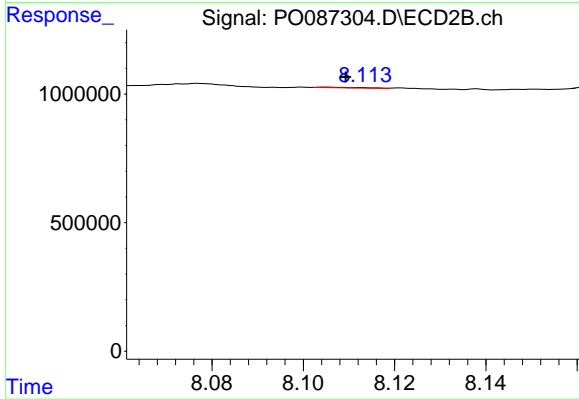
#43 AR-1268-3

R.T.: 7.829 min
 Delta R.T.: 0.004 min
 Response: 73101
 Conc: 0.80 ng/ml



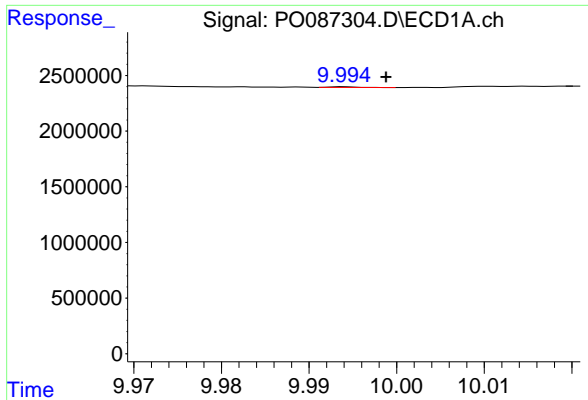
#44 AR-1268-4

R.T.: 9.562 min
 Delta R.T.: -0.002 min
 Response: 9924
 Conc: 0.11 ng/ml



#44 AR-1268-4

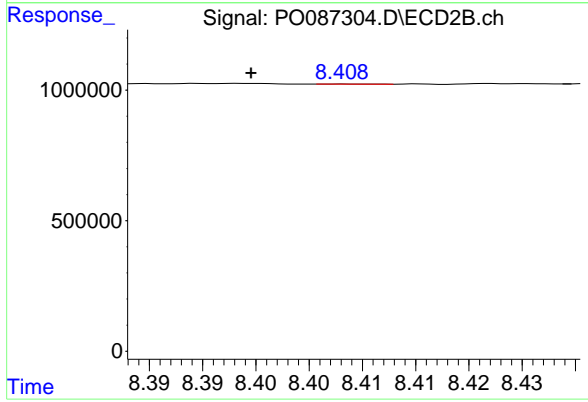
R.T.: 8.105 min
 Delta R.T.: -0.004 min
 Response: 14668
 Conc: 0.37 ng/ml



#45 AR-1268-5

R.T.: 9.994 min
 Delta R.T.: -0.005 min
 Response: 14641
 Conc: 0.02 ng/ml

Instrument :
 ECD_O
 ClientSampleId :



#45 AR-1268-5

R.T.: 8.408 min
 Delta R.T.: 0.008 min
 Response: 1603
 Conc: 0.01 ng/ml