

Data Path : Z:\pestpcbsrv\HPCHEM1\ECD_0\Data\P0062222\
 Data File : P0087305.D
 Signal(s) : Signal #1: ECD1A.ch Signal #2: ECD2B.ch
 Acq On : 23 Jun 2022 07:14
 Operator : YP/AJ
 Sample : AR1660CCC500
 Misc :
 ALS Vial : 3 Sample Multiplier: 1

Instrument :
 ECD_0
 ClientSampleId :

Integration File signal 1: autoint1.e
 Integration File signal 2: autoint2.e
 Quant Time: Jun 23 07:51:25 2022
 Quant Method : Z:\pestpcbsrv\HPCHEM1\ECD_0\methods\P0060922.M
 Quant Title : GC EXTRACTABLES
 QLast Update : Fri Jun 10 04:33:49 2022
 Response via : Initial Calibration
 Integrator: ChemStation

Volume Inj. : 2 µl
 Signal #1 Phase : ZB-MR1 Signal #2 Phase: ZB-MR2
 Signal #1 Info : 30Mx0.32mmx 0.50µ Signal #2 Info : 30M x 0.32mm x 0.25µm

Compound	RT#1	RT#2	Resp#1	Resp#2	ng/ml	ng/ml
System Monitoring Compounds						
1) SA Tetrachlo...	4.491	3.638	115.0E6	54468740	49.191	48.377
2) SA Decachlor...	10.347	8.641	88589610	37437832	48.138	47.616
Target Compounds						
3) L1 AR-1016-1	5.673	4.725	39344495	17186210	470.049	510.409
4) L1 AR-1016-2	5.696	4.744	55615099	23481955	472.968	504.808
5) L1 AR-1016-3	5.759	4.919	35360936	13657055	469.770	533.097
6) L1 AR-1016-4	5.858	4.961	28518089	10324424	475.947	506.434
7) L1 AR-1016-5	6.156	5.175	28149986	13971167	478.965	546.685
8) L2 AR-1221-1	4.694	3.852	4263219	2090553	152.278	157.864
9) L2 AR-1221-2	4.788	3.938	6227389	2905212	294.931	292.639
10) L2 AR-1221-3	4.866	4.015	22520303	10170818	348.643	349.549
11) L3 AR-1232-1	4.866	4.015	22520303	10170818	382.961	381.234
12) L3 AR-1232-2	5.207	4.744	31040848	23481955	1072.465	1082.814
13) L3 AR-1232-3	5.696	4.919	55615099	13657055	1035.789	1202.913
14) L3 AR-1232-4	5.858	5.004	28518089	13316606	1061.844	1302.634
15) L3 AR-1232-5	5.950	5.175	26209219	13971167	1178.994	1239.557
16) L4 AR-1242-1	5.673	4.725	39344495	17186210	612.136	649.324
17) L4 AR-1242-2	5.696	4.744	55615099	23481955	608.656	651.900
18) L4 AR-1242-3	5.759	4.919	35360936	13657055	602.442	683.439
19) L4 AR-1242-4	5.858	5.004	28518089	13316606	612.139	681.292
20) L4 AR-1242-5	6.601	5.526	5388776	10775171	113.571	461.557 #
21) L5 AR-1248-1	5.673	4.725	39344495	17186210	810.944	868.565
22) L5 AR-1248-2	5.950	4.961	26209219	10324424	367.900	379.981
23) L5 AR-1248-3	6.156	5.004	28149986	13316606	368.765	465.970 #
24) L5 AR-1248-4	6.561	5.175	5713599	13971167	68.627	424.616 #
25) L5 AR-1248-5	6.601	5.567	5388776	2423854	67.151	75.831
26) L6 AR-1254-1	6.535	5.526	21930867	10775171	251.539	222.637
27) L6 AR-1254-2	6.755	5.674	22283484	10392269	170.632	243.655 #
28) L6 AR-1254-3	7.126	6.092	13566855	17916417	103.983	262.159 #
29) L6 AR-1254-4	7.413	6.304	7489304	2710265	78.386	64.242
30) L6 AR-1254-5	7.833	6.721	64881688	32700883	621.019	538.465
31) L7 AR-1260-1	7.290	6.207	51390607	24407877	509.962	521.081
32) L7 AR-1260-2	7.549	6.394	56248139	29361874	477.270	524.190
33) L7 AR-1260-3	7.911	6.547	40002880	27457997	471.881	516.004
34) L7 AR-1260-4	8.138	7.018	46478571	21352913	456.368	529.830
35) L7 AR-1260-5	8.467	7.259	86210385	49519456	474.343	527.895
36) L8 AR-1262-1	7.911	6.812	40002880	12263685	325.312	506.903 #
37) L8 AR-1262-2	8.467	7.259	86210385	49519456	420.015	490.175
38) L8 AR-1262-3	8.800	7.542	57017314	10489769	394.936	259.006 #
39) L8 AR-1262-4	8.881	7.605	14528706	35226820	205.771	470.592 #
40) L8 AR-1262-5	9.560	8.098	24560475	10821171	317.816	314.555
41) L9 AR-1268-1	8.800	7.542	57017314	10489769	221.798	87.821 #

Data Path : Z:\pestpcbsrv\HPCHEM1\ECD_0\Data\P0062222\
 Data File : P0087305.D
 Signal(s) : Signal #1: ECD1A.ch Signal #2: ECD2B.ch
 Acq On : 23 Jun 2022 07:14
 Operator : YP/AJ
 Sample : AR1660CCC500
 Misc :
 ALS Vial : 3 Sample Multiplier: 1

Instrument :
 ECD_0
 ClientSampleId :

Integration File signal 1: autoint1.e
 Integration File signal 2: autoint2.e
 Quant Time: Jun 23 07:51:25 2022
 Quant Method : Z:\pestpcbsrv\HPCHEM1\ECD_0\methods\P0060922.M
 Quant Title : GC EXTRACTABLES
 QLast Update : Fri Jun 10 04:33:49 2022
 Response via : Initial Calibration
 Integrator: ChemStation

Volume Inj. : 2 µl
 Signal #1 Phase : ZB-MR1 Signal #2 Phase: ZB-MR2
 Signal #1 Info : 30Mx0.32mmx 0.50µ Signal #2 Info : 30M x 0.32mm x 0.25µm

	Compound	RT#1	RT#2	Resp#1	Resp#2	ng/ml	ng/ml
42)	L9 AR-1268-2	8.881	7.605	14528706	35226820	61.364	323.529 #
43)	L9 AR-1268-3	9.122	7.814	1435858	709812	7.172	7.727
44)	L9 AR-1268-4	9.560	8.098	24560475	10821171	272.436	272.334
45)	L9 AR-1268-5	9.990	8.387	7442036	3273456	11.633	11.377

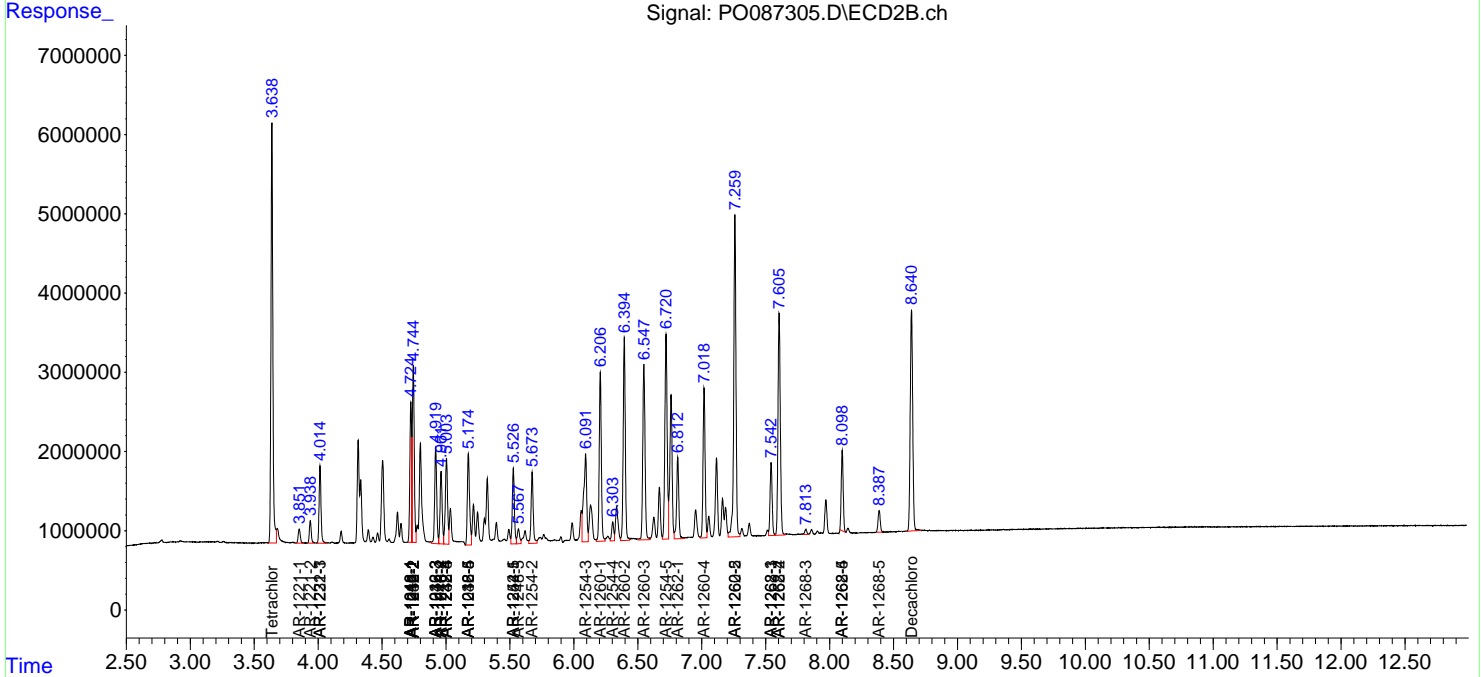
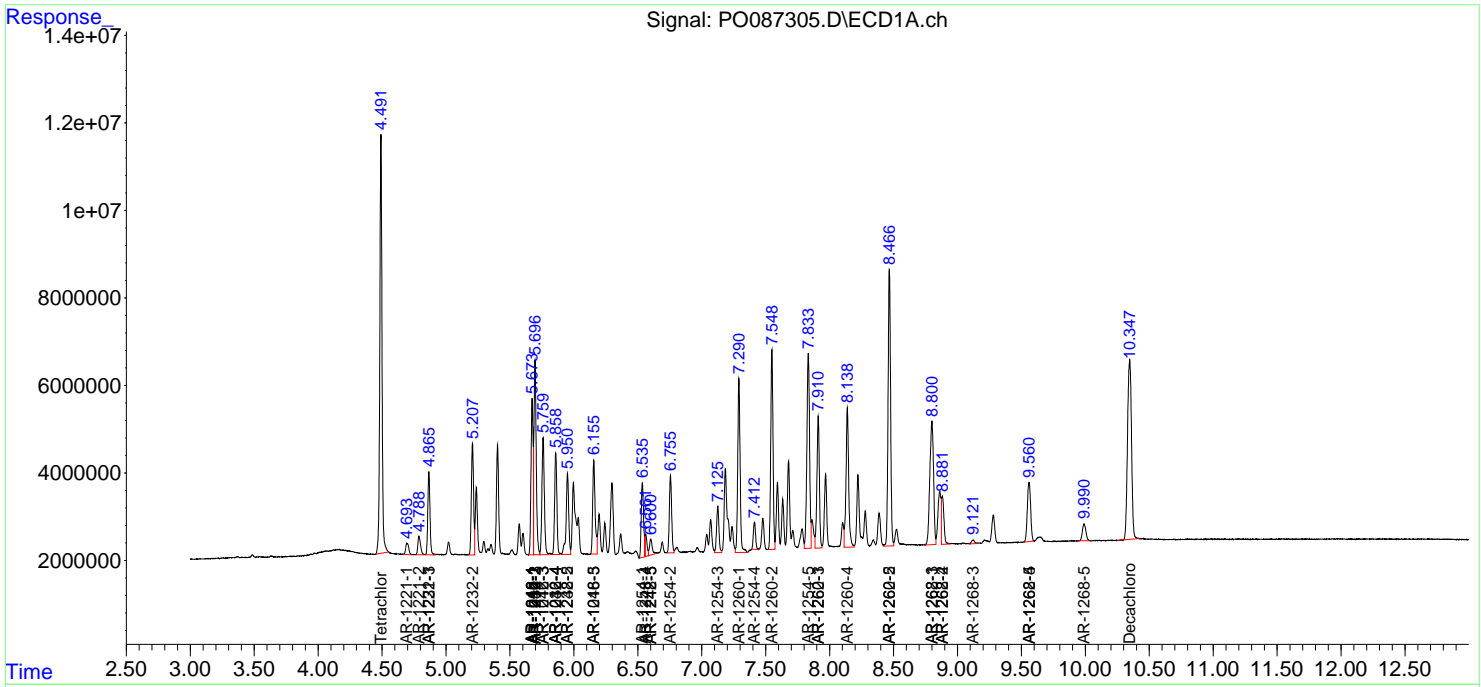
(f)=RT Delta > 1/2 Window (#)=Amounts differ by > 25% (m)=manual int.

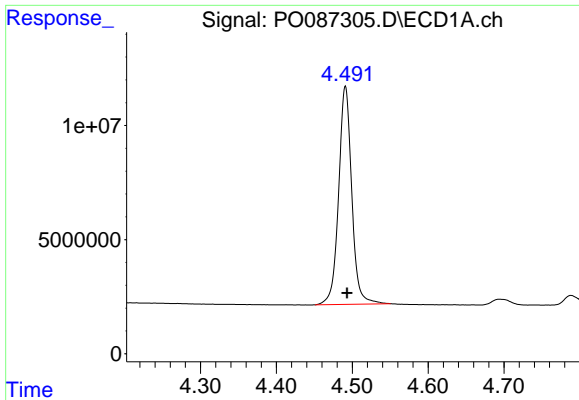
Data Path : Z:\pestpcbsrv\HPCHEM1\ECD_O\Data\PO062222\
 Data File : PO087305.D
 Signal(s) : Signal #1: ECD1A.ch Signal #2: ECD2B.ch
 Acq On : 23 Jun 2022 07:14
 Operator : YP/AJ
 Sample : AR1660CCC500
 Misc :
 ALS Vial : 3 Sample Multiplier: 1

Instrument :
 ECD_O
 ClientSampleId :

Integration File signal 1: autoint1.e
 Integration File signal 2: autoint2.e
 Quant Time: Jun 23 07:51:25 2022
 Quant Method : Z:\pestpcbsrv\HPCHEM1\ECD_O\methods\PO060922.M
 Quant Title : GC EXTRACTABLES
 QLast Update : Fri Jun 10 04:33:49 2022
 Response via : Initial Calibration
 Integrator: ChemStation

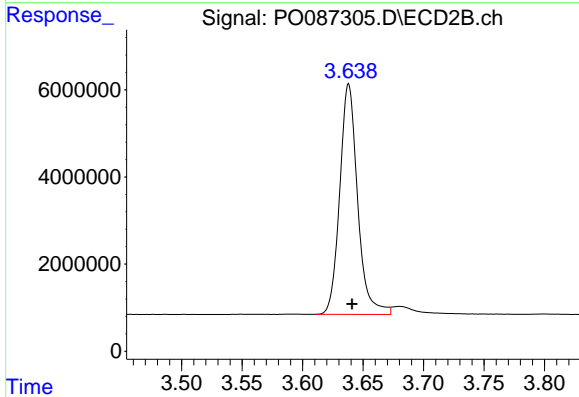
Volume Inj. : 2 µl
 Signal #1 Phase : ZB-MR1 Signal #2 Phase: ZB-MR2
 Signal #1 Info : 30Mx0.32mmx 0.50µ Signal #2 Info : 30M x 0.32mm x 0.25µm



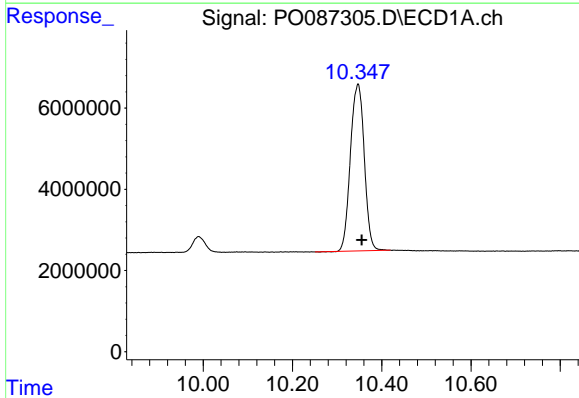


#1 Tetrachloro-m-xylene
 R.T.: 4.491 min
 Delta R.T.: -0.002 min
 Response: 114961082
 Conc: 49.19 ng/ml

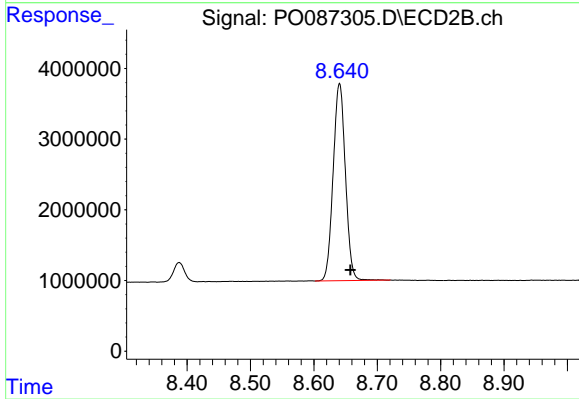
Instrument :
 ECD_O
 ClientSampleId :



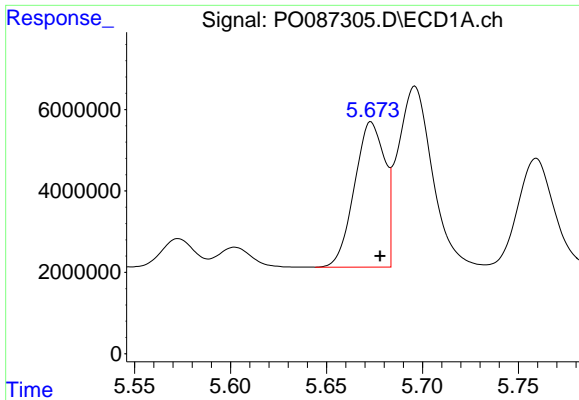
#1 Tetrachloro-m-xylene
 R.T.: 3.638 min
 Delta R.T.: -0.003 min
 Response: 54468740
 Conc: 48.38 ng/ml



#2 Decachlorobiphenyl
 R.T.: 10.347 min
 Delta R.T.: -0.009 min
 Response: 88589610
 Conc: 48.14 ng/ml



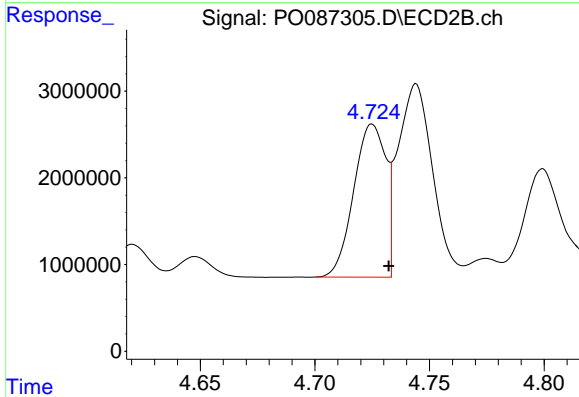
#2 Decachlorobiphenyl
 R.T.: 8.641 min
 Delta R.T.: -0.017 min
 Response: 37437832
 Conc: 47.62 ng/ml



#3 AR-1016-1

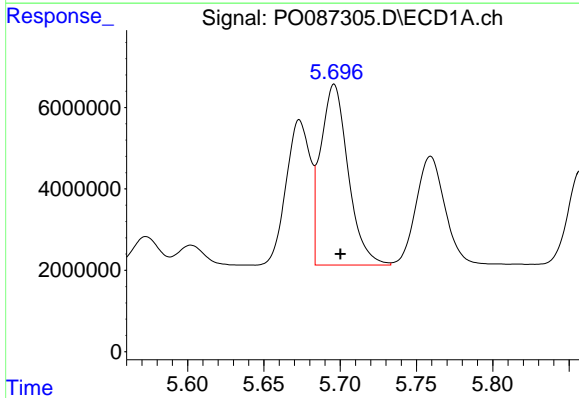
R.T.: 5.673 min
 Delta R.T.: -0.005 min
 Response: 39344495
 Conc: 470.05 ng/ml

Instrument :
 ECD_O
 ClientSampleId :



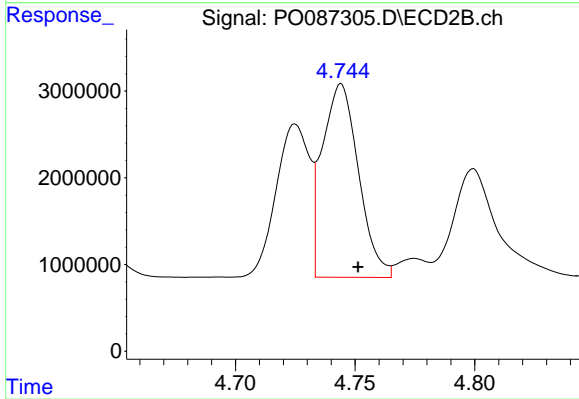
#3 AR-1016-1

R.T.: 4.725 min
 Delta R.T.: -0.007 min
 Response: 17186210
 Conc: 510.41 ng/ml



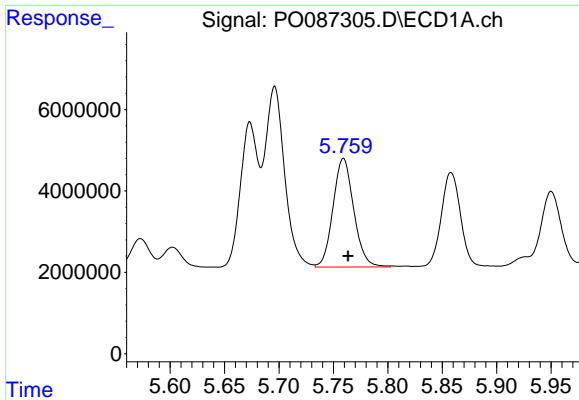
#4 AR-1016-2

R.T.: 5.696 min
 Delta R.T.: -0.004 min
 Response: 55615099
 Conc: 472.97 ng/ml



#4 AR-1016-2

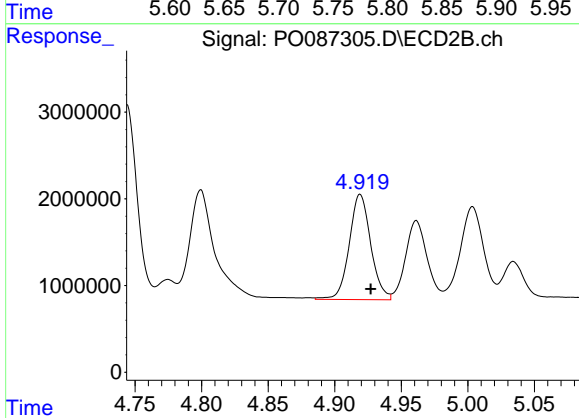
R.T.: 4.744 min
 Delta R.T.: -0.007 min
 Response: 23481955
 Conc: 504.81 ng/ml



#5 AR-1016-3

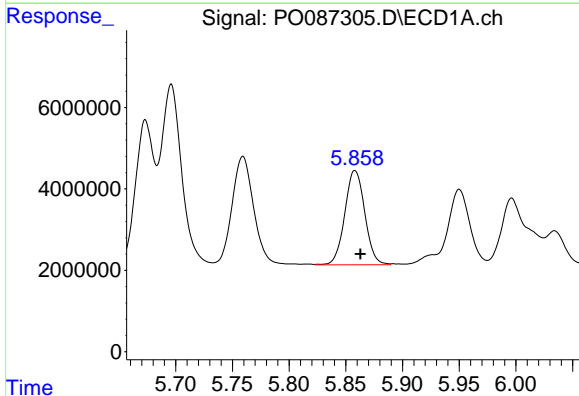
R.T.: 5.759 min
 Delta R.T.: -0.004 min
 Response: 35360936
 Conc: 469.77 ng/ml

Instrument :
 ECD_O
 ClientSampleId :



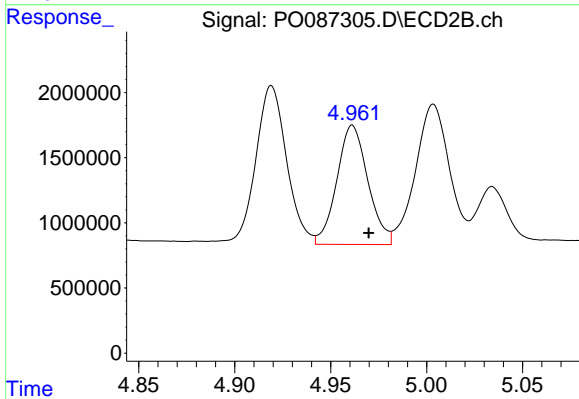
#5 AR-1016-3

R.T.: 4.919 min
 Delta R.T.: -0.008 min
 Response: 13657055
 Conc: 533.10 ng/ml



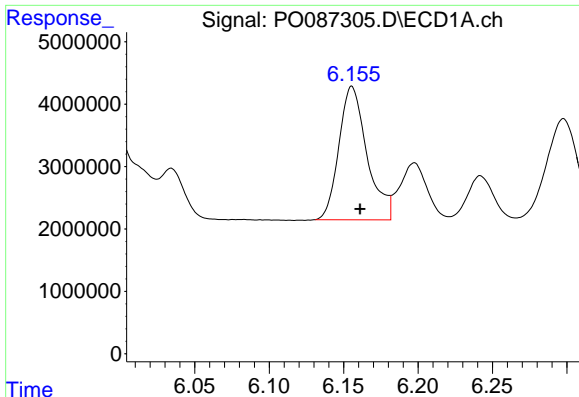
#6 AR-1016-4

R.T.: 5.858 min
 Delta R.T.: -0.005 min
 Response: 28518089
 Conc: 475.95 ng/ml



#6 AR-1016-4

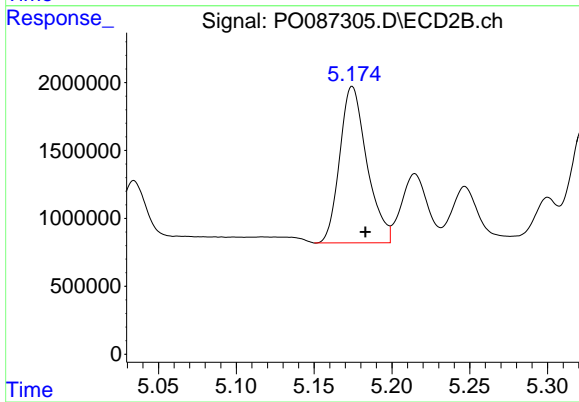
R.T.: 4.961 min
 Delta R.T.: -0.009 min
 Response: 10324424
 Conc: 506.43 ng/ml



#7 AR-1016-5

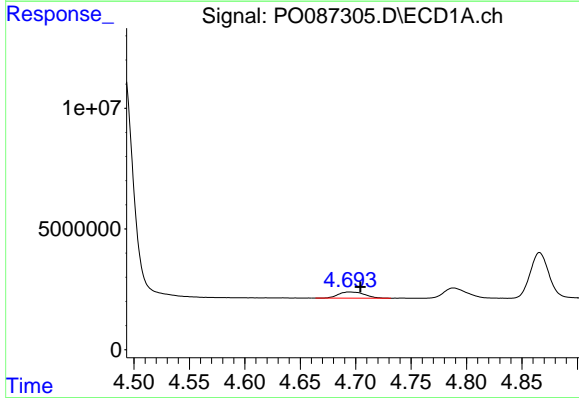
R.T.: 6.156 min
 Delta R.T.: -0.005 min
 Response: 28149986
 Conc: 478.97 ng/ml

Instrument :
 ECD_O
 ClientSampleId :



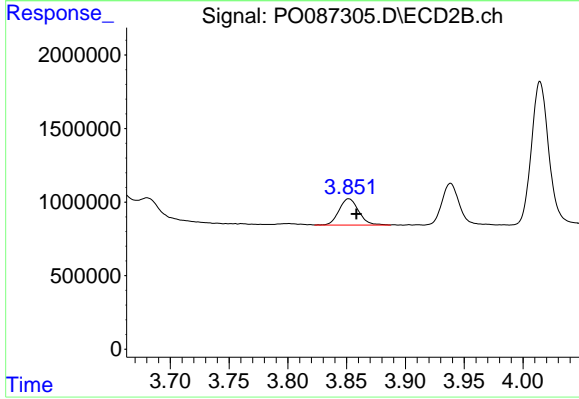
#7 AR-1016-5

R.T.: 5.175 min
 Delta R.T.: -0.008 min
 Response: 13971167
 Conc: 546.69 ng/ml



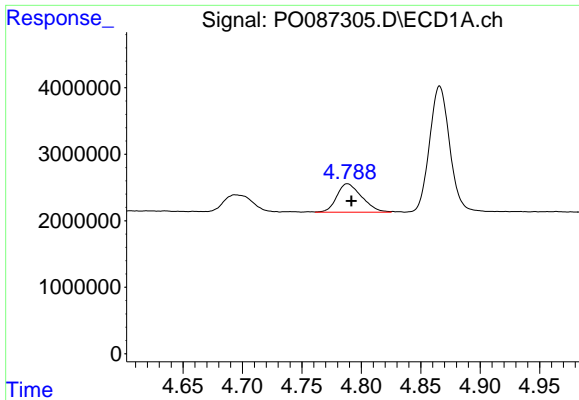
#8 AR-1221-1

R.T.: 4.694 min
 Delta R.T.: -0.011 min
 Response: 4263219
 Conc: 152.28 ng/ml



#8 AR-1221-1

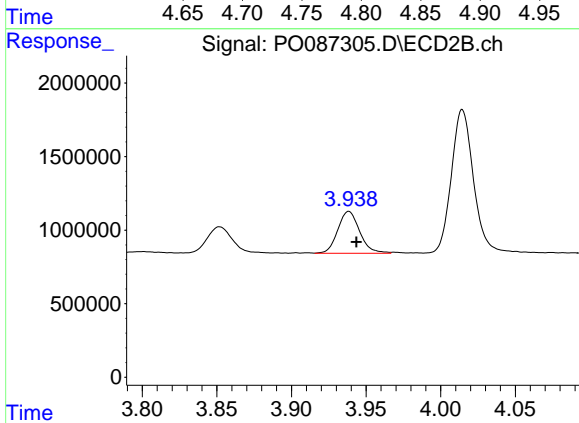
R.T.: 3.852 min
 Delta R.T.: -0.006 min
 Response: 2090553
 Conc: 157.86 ng/ml



#9 AR-1221-2

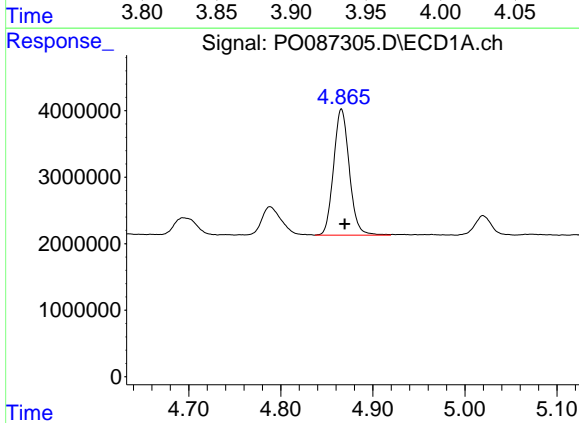
R.T.: 4.788 min
 Delta R.T.: -0.003 min
 Response: 6227389
 Conc: 294.93 ng/ml

Instrument :
 ECD_O
 ClientSampleId :



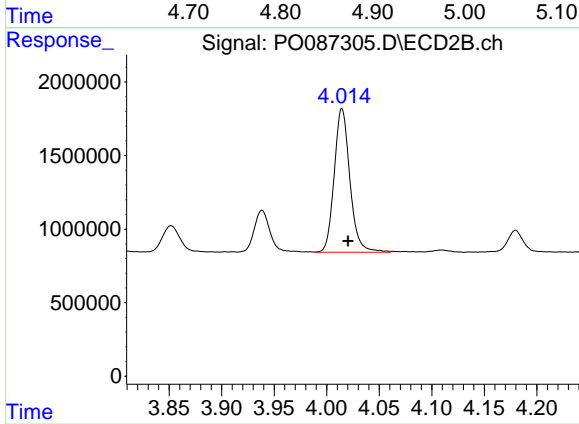
#9 AR-1221-2

R.T.: 3.938 min
 Delta R.T.: -0.005 min
 Response: 2905212
 Conc: 292.64 ng/ml



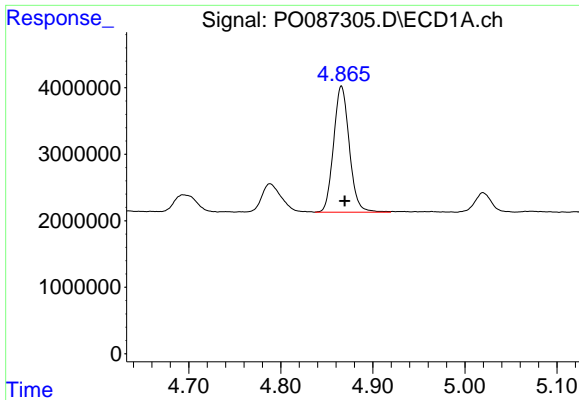
#10 AR-1221-3

R.T.: 4.866 min
 Delta R.T.: -0.004 min
 Response: 22520303
 Conc: 348.64 ng/ml



#10 AR-1221-3

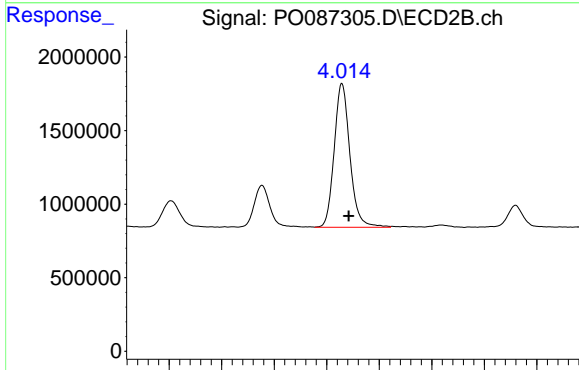
R.T.: 4.015 min
 Delta R.T.: -0.006 min
 Response: 10170818
 Conc: 349.55 ng/ml



#11 AR-1232-1

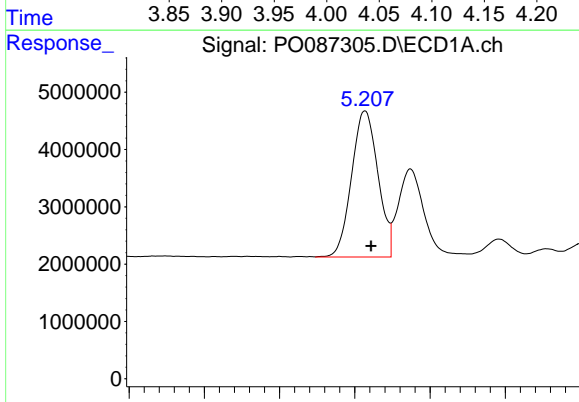
R.T.: 4.866 min
 Delta R.T.: -0.004 min
 Response: 22520303
 Conc: 382.96 ng/ml

Instrument :
 ECD_O
 ClientSampleId :



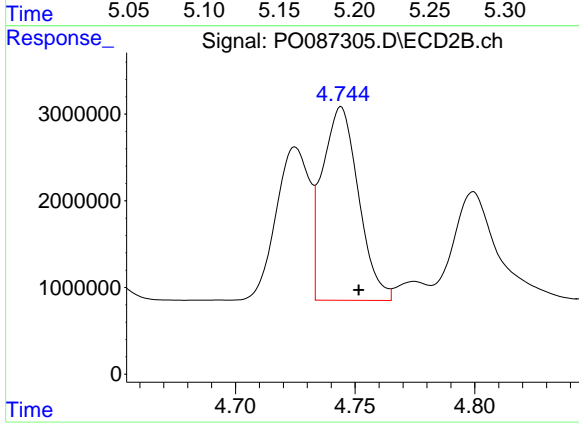
#11 AR-1232-1

R.T.: 4.015 min
 Delta R.T.: -0.006 min
 Response: 10170818
 Conc: 381.23 ng/ml



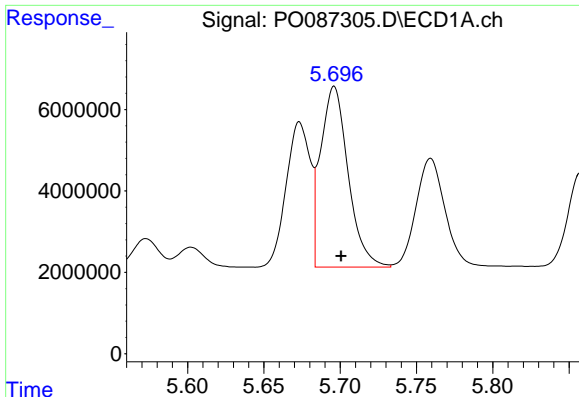
#12 AR-1232-2

R.T.: 5.207 min
 Delta R.T.: -0.004 min
 Response: 31040848
 Conc: 1072.47 ng/ml



#12 AR-1232-2

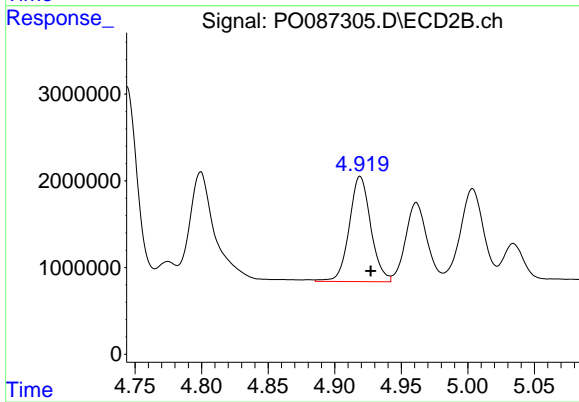
R.T.: 4.744 min
 Delta R.T.: -0.007 min
 Response: 23481955
 Conc: 1082.81 ng/ml



#13 AR-1232-3

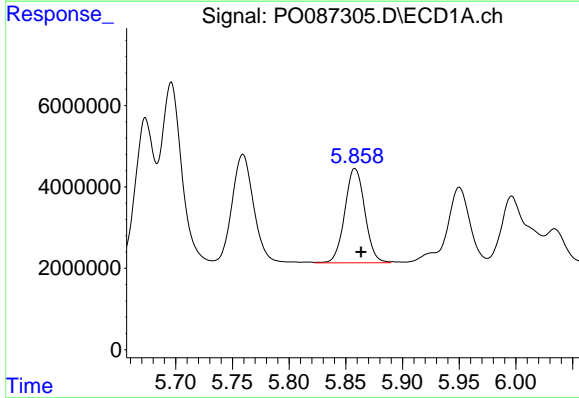
R.T.: 5.696 min
 Delta R.T.: -0.004 min
 Response: 55615099
 Conc: 1035.79 ng/ml

Instrument :
 ECD_O
 ClientSampleId :



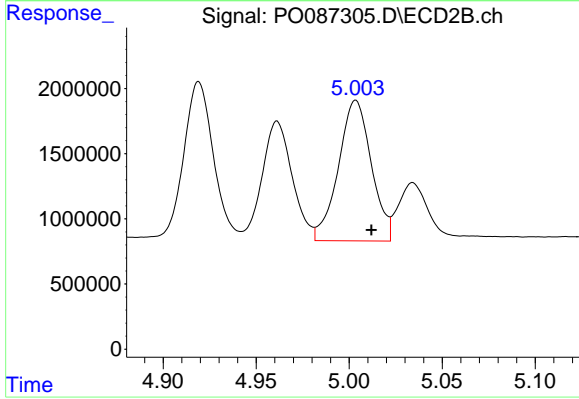
#13 AR-1232-3

R.T.: 4.919 min
 Delta R.T.: -0.008 min
 Response: 13657055
 Conc: 1202.91 ng/ml



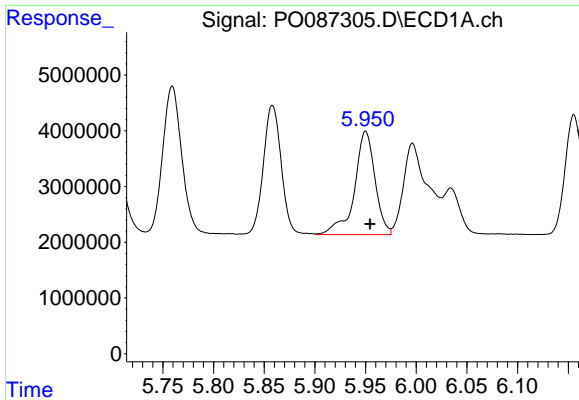
#14 AR-1232-4

R.T.: 5.858 min
 Delta R.T.: -0.005 min
 Response: 28518089
 Conc: 1061.84 ng/ml



#14 AR-1232-4

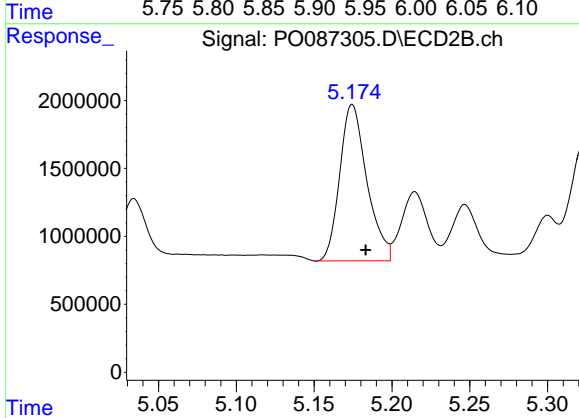
R.T.: 5.004 min
 Delta R.T.: -0.008 min
 Response: 13316606
 Conc: 1302.63 ng/ml



#15 AR-1232-5

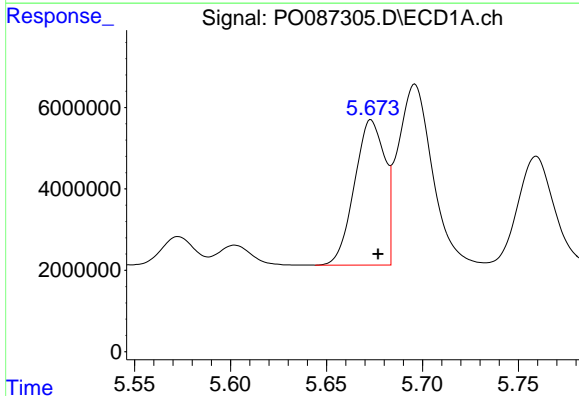
R.T.: 5.950 min
 Delta R.T.: -0.005 min
 Response: 26209219
 Conc: 1178.99 ng/ml

Instrument :
 ECD_O
 ClientSampleId :



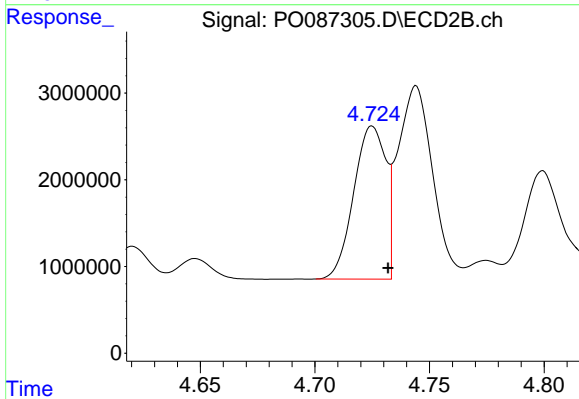
#15 AR-1232-5

R.T.: 5.175 min
 Delta R.T.: -0.009 min
 Response: 13971167
 Conc: 1239.56 ng/ml



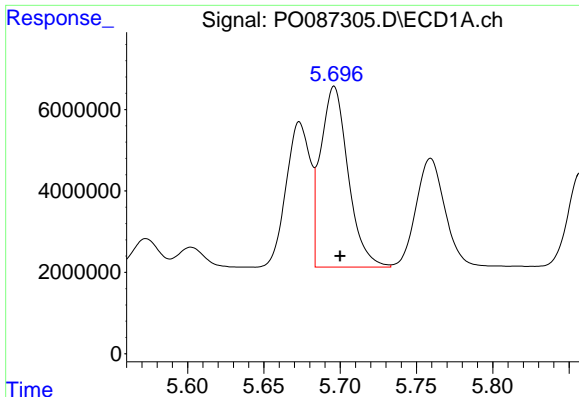
#16 AR-1242-1

R.T.: 5.673 min
 Delta R.T.: -0.004 min
 Response: 39344495
 Conc: 612.14 ng/ml



#16 AR-1242-1

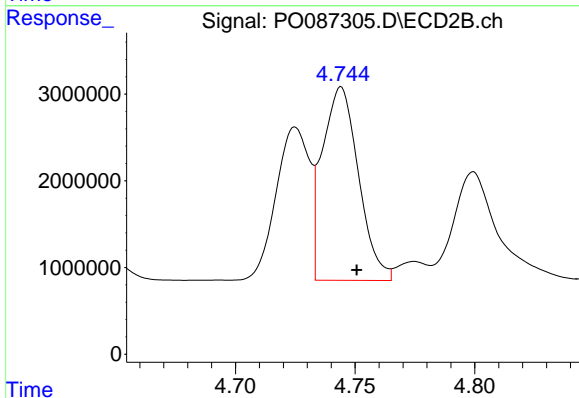
R.T.: 4.725 min
 Delta R.T.: -0.007 min
 Response: 17186210
 Conc: 649.32 ng/ml



#17 AR-1242-2

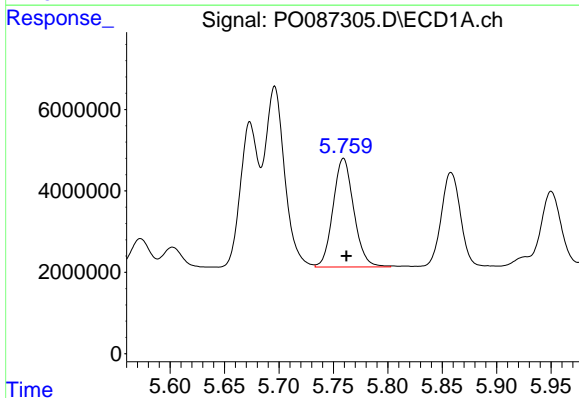
R.T.: 5.696 min
 Delta R.T.: -0.004 min
 Response: 55615099
 Conc: 608.66 ng/ml

Instrument :
 ECD_O
 ClientSampleId :



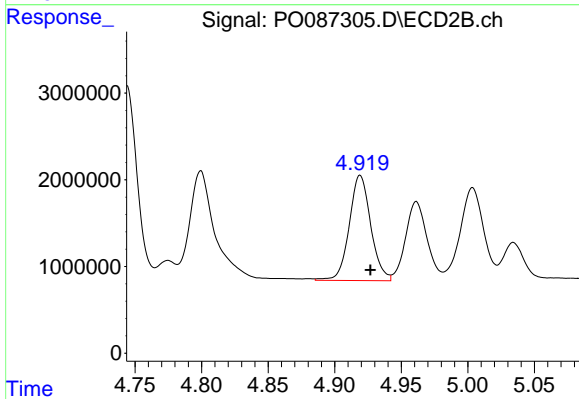
#17 AR-1242-2

R.T.: 4.744 min
 Delta R.T.: -0.006 min
 Response: 23481955
 Conc: 651.90 ng/ml



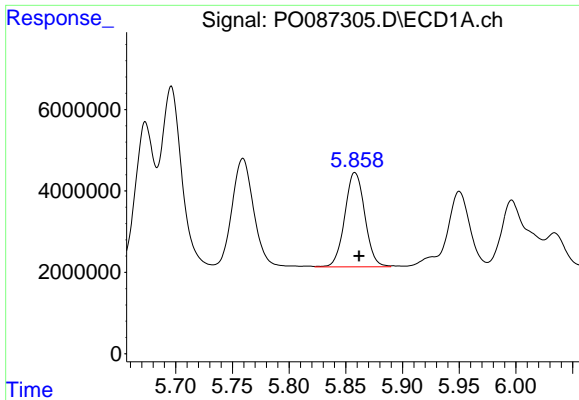
#18 AR-1242-3

R.T.: 5.759 min
 Delta R.T.: -0.003 min
 Response: 35360936
 Conc: 602.44 ng/ml



#18 AR-1242-3

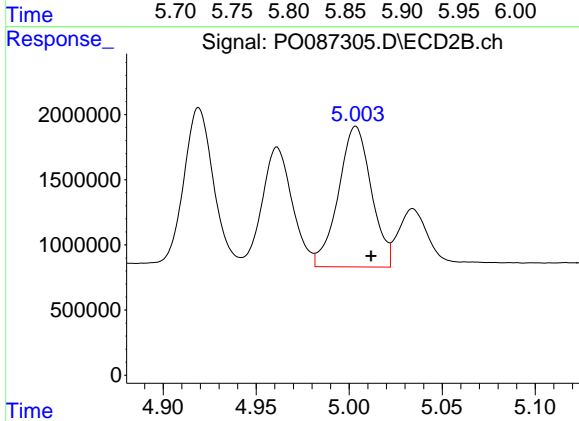
R.T.: 4.919 min
 Delta R.T.: -0.008 min
 Response: 13657055
 Conc: 683.44 ng/ml



#19 AR-1242-4

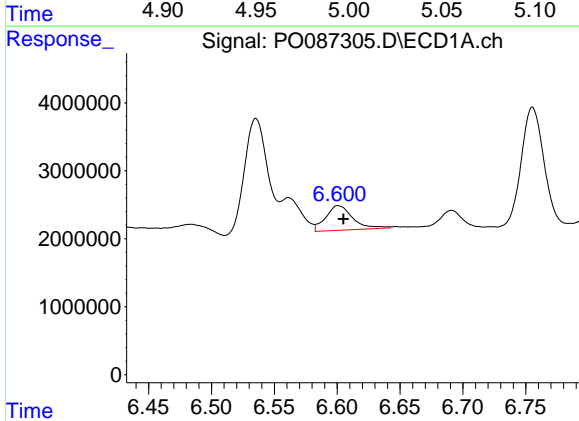
R.T.: 5.858 min
 Delta R.T.: -0.004 min
 Response: 28518089
 Conc: 612.14 ng/ml

Instrument :
 ECD_O
 ClientSampleId :



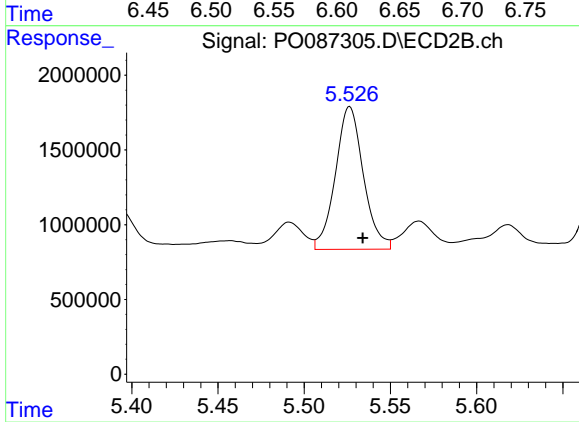
#19 AR-1242-4

R.T.: 5.004 min
 Delta R.T.: -0.008 min
 Response: 13316606
 Conc: 681.29 ng/ml



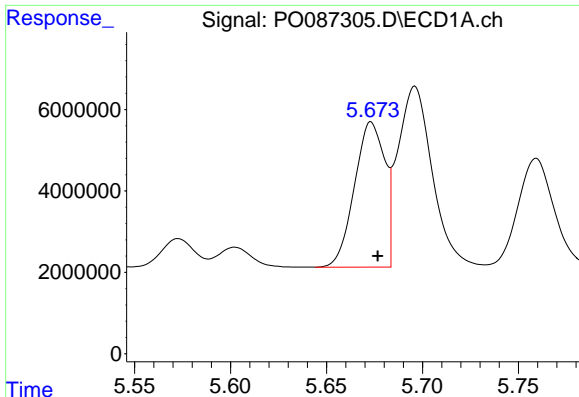
#20 AR-1242-5

R.T.: 6.601 min
 Delta R.T.: -0.004 min
 Response: 5388776
 Conc: 113.57 ng/ml



#20 AR-1242-5

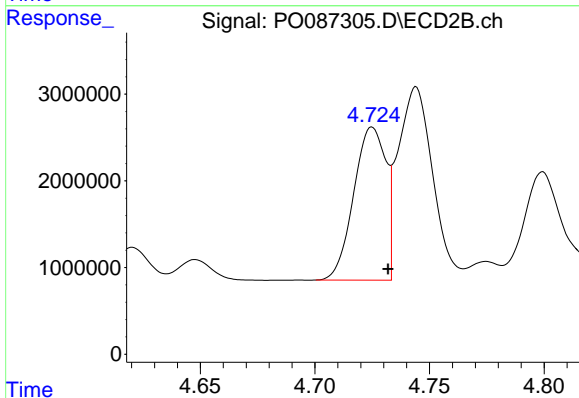
R.T.: 5.526 min
 Delta R.T.: -0.008 min
 Response: 10775171
 Conc: 461.56 ng/ml



#21 AR-1248-1

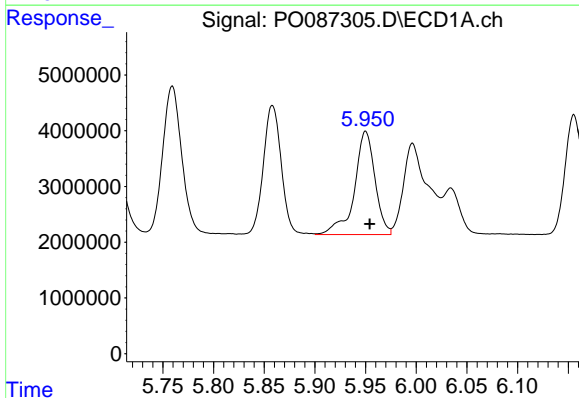
R.T.: 5.673 min
 Delta R.T.: -0.004 min
 Response: 39344495
 Conc: 810.94 ng/ml

Instrument :
 ECD_O
 ClientSampleId :



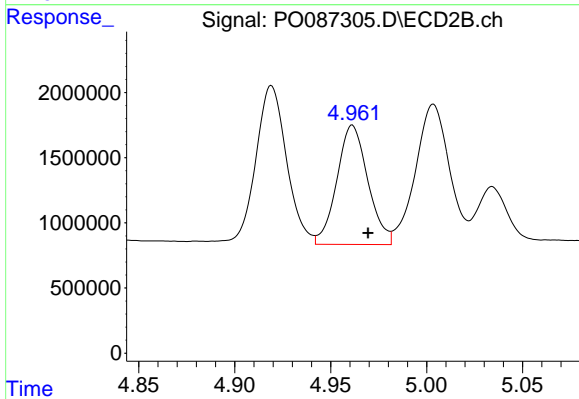
#21 AR-1248-1

R.T.: 4.725 min
 Delta R.T.: -0.007 min
 Response: 17186210
 Conc: 868.57 ng/ml



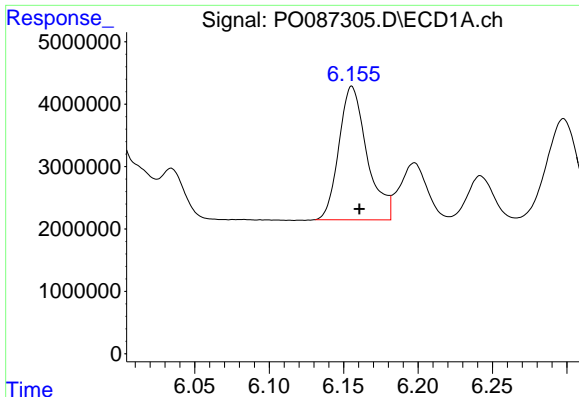
#22 AR-1248-2

R.T.: 5.950 min
 Delta R.T.: -0.004 min
 Response: 26209219
 Conc: 367.90 ng/ml



#22 AR-1248-2

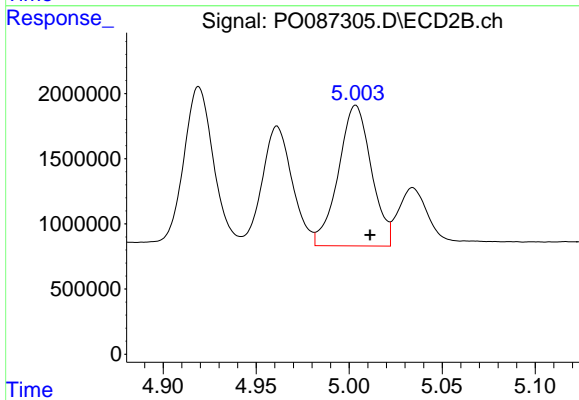
R.T.: 4.961 min
 Delta R.T.: -0.008 min
 Response: 10324424
 Conc: 379.98 ng/ml



#23 AR-1248-3

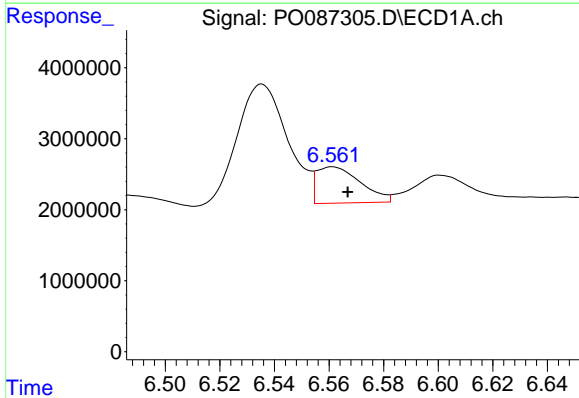
R.T.: 6.156 min
 Delta R.T.: -0.005 min
 Response: 28149986
 Conc: 368.76 ng/ml

Instrument :
 ECD_O
 ClientSampleId :



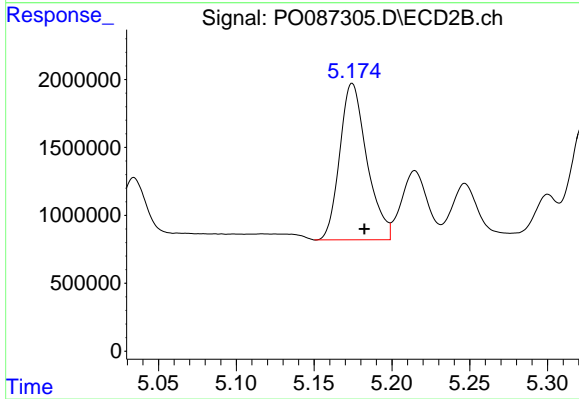
#23 AR-1248-3

R.T.: 5.004 min
 Delta R.T.: -0.008 min
 Response: 13316606
 Conc: 465.97 ng/ml



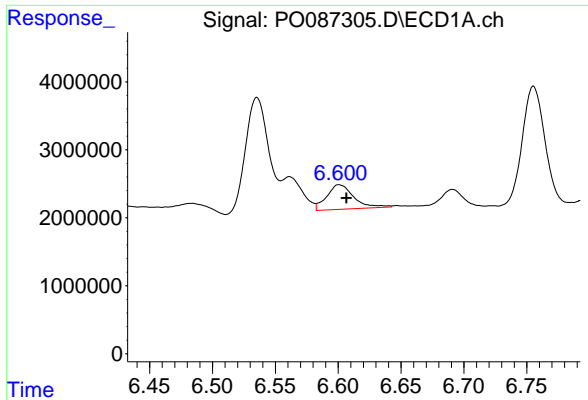
#24 AR-1248-4

R.T.: 6.561 min
 Delta R.T.: -0.006 min
 Response: 5713599
 Conc: 68.63 ng/ml



#24 AR-1248-4

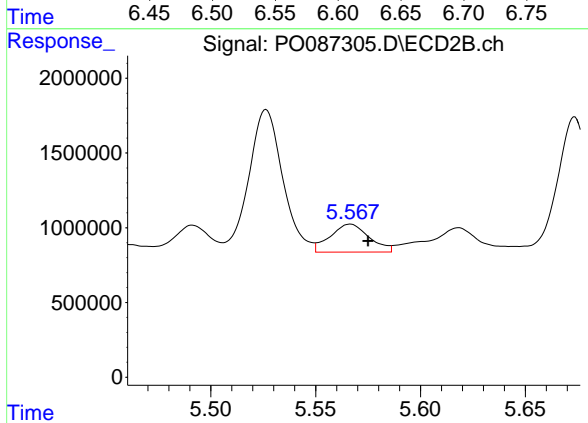
R.T.: 5.175 min
 Delta R.T.: -0.008 min
 Response: 13971167
 Conc: 424.62 ng/ml



#25 AR-1248-5

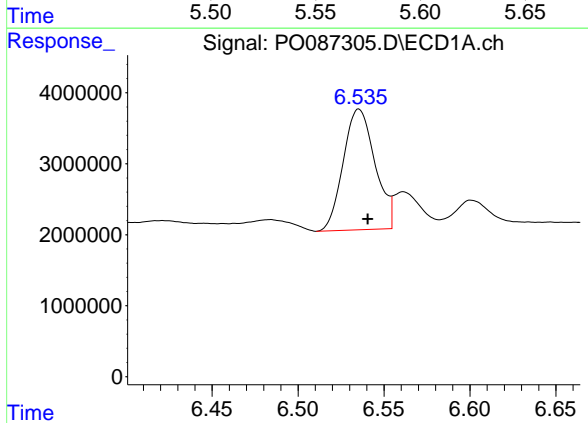
R.T.: 6.601 min
 Delta R.T.: -0.006 min
 Response: 5388776
 Conc: 67.15 ng/ml

Instrument :
 ECD_O
 ClientSampleId :



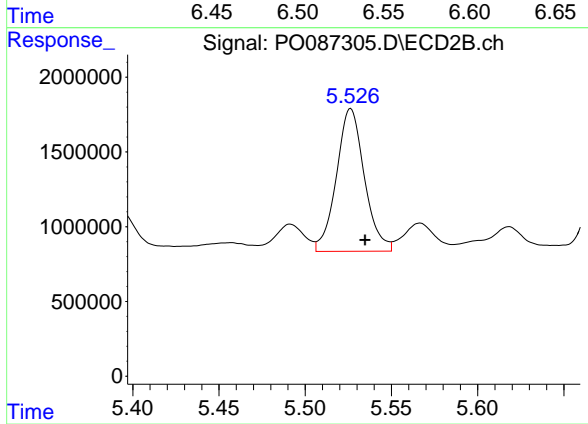
#25 AR-1248-5

R.T.: 5.567 min
 Delta R.T.: -0.008 min
 Response: 2423854
 Conc: 75.83 ng/ml



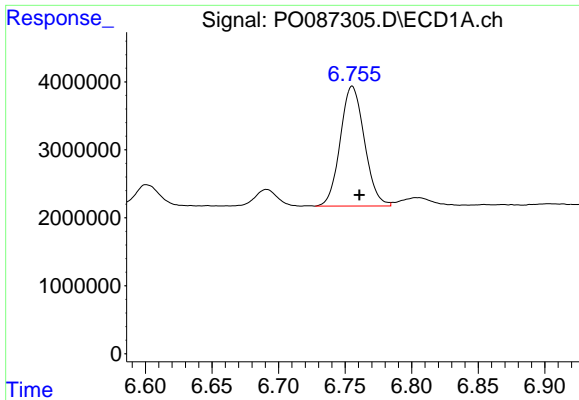
#26 AR-1254-1

R.T.: 6.535 min
 Delta R.T.: -0.005 min
 Response: 21930867
 Conc: 251.54 ng/ml



#26 AR-1254-1

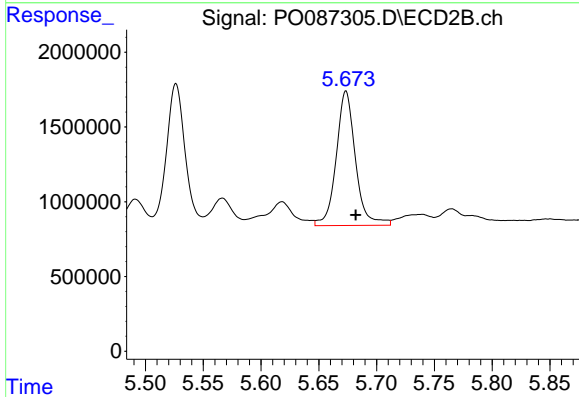
R.T.: 5.526 min
 Delta R.T.: -0.008 min
 Response: 10775171
 Conc: 222.64 ng/ml



#27 AR-1254-2

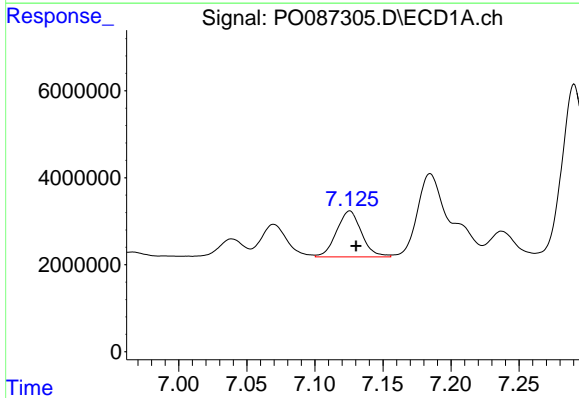
R.T.: 6.755 min
 Delta R.T.: -0.005 min
 Response: 22283484
 Conc: 170.63 ng/ml

Instrument :
 ECD_O
 ClientSampleId :



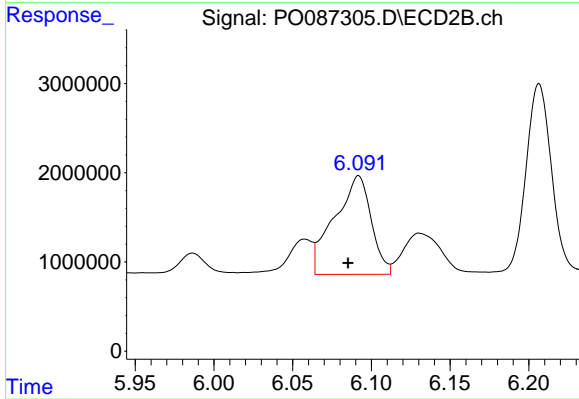
#27 AR-1254-2

R.T.: 5.674 min
 Delta R.T.: -0.008 min
 Response: 10392269
 Conc: 243.66 ng/ml



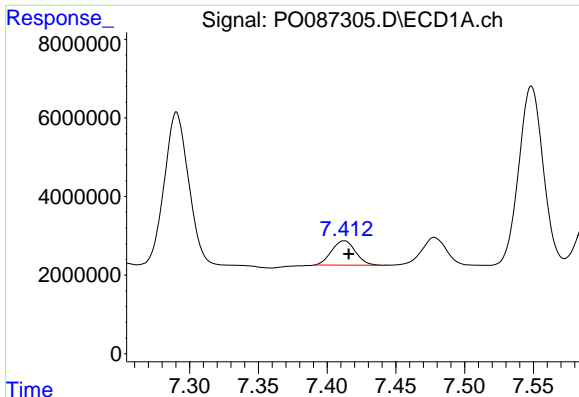
#28 AR-1254-3

R.T.: 7.126 min
 Delta R.T.: -0.005 min
 Response: 13566855
 Conc: 103.98 ng/ml



#28 AR-1254-3

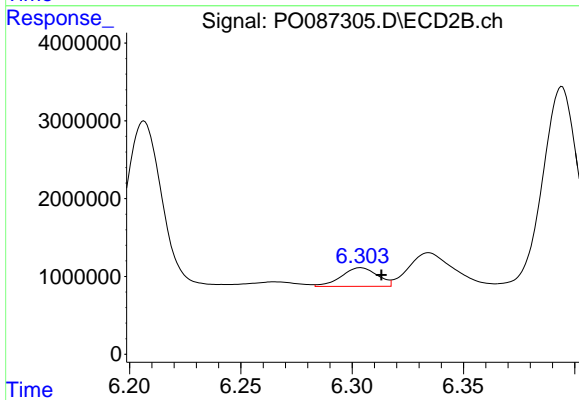
R.T.: 6.092 min
 Delta R.T.: 0.007 min
 Response: 17916417
 Conc: 262.16 ng/ml



#29 AR-1254-4

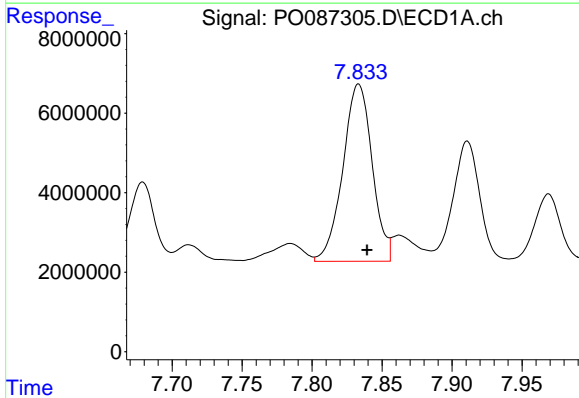
R.T.: 7.413 min
 Delta R.T.: -0.003 min
 Response: 7489304
 Conc: 78.39 ng/ml

Instrument :
 ECD_O
 ClientSampleId :



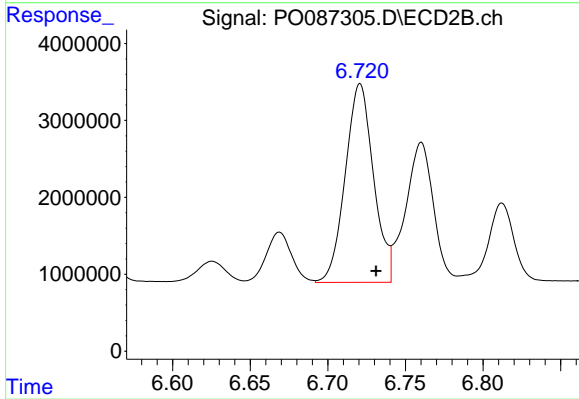
#29 AR-1254-4

R.T.: 6.304 min
 Delta R.T.: -0.009 min
 Response: 2710265
 Conc: 64.24 ng/ml



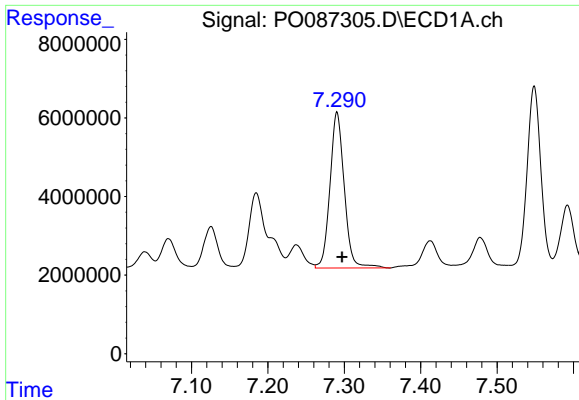
#30 AR-1254-5

R.T.: 7.833 min
 Delta R.T.: -0.006 min
 Response: 64881688
 Conc: 621.02 ng/ml



#30 AR-1254-5

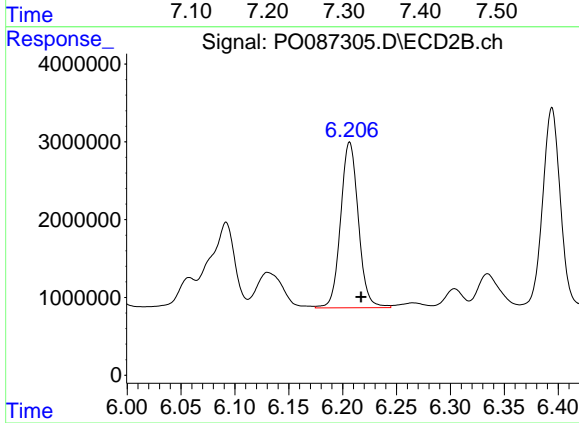
R.T.: 6.721 min
 Delta R.T.: -0.010 min
 Response: 32700883
 Conc: 538.47 ng/ml



#31 AR-1260-1

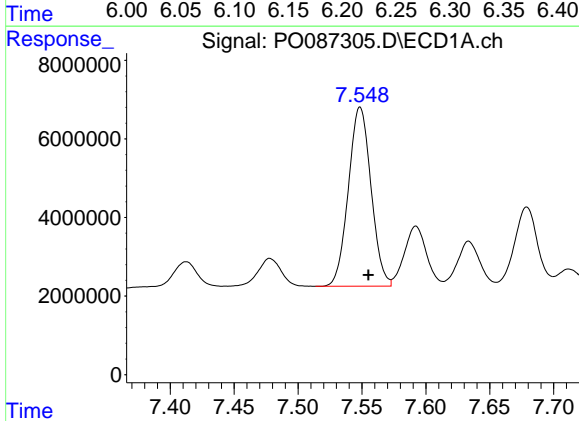
R.T.: 7.290 min
 Delta R.T.: -0.007 min
 Response: 51390607
 Conc: 509.96 ng/ml

Instrument :
 ECD_O
 ClientSampleId :



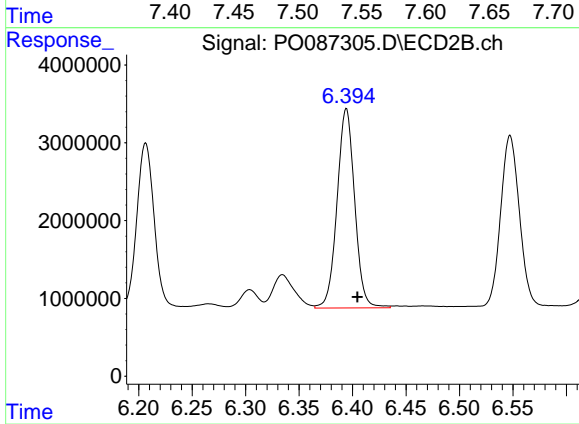
#31 AR-1260-1

R.T.: 6.207 min
 Delta R.T.: -0.011 min
 Response: 24407877
 Conc: 521.08 ng/ml



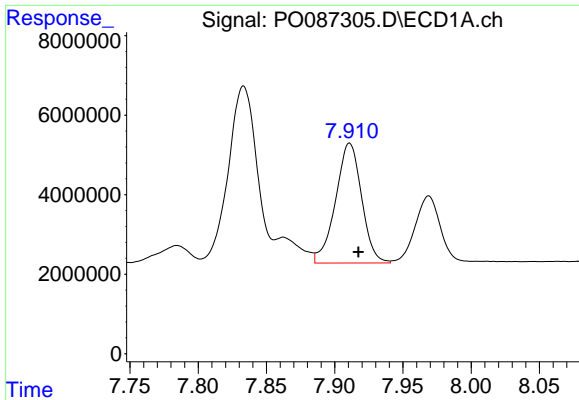
#32 AR-1260-2

R.T.: 7.549 min
 Delta R.T.: -0.006 min
 Response: 56248139
 Conc: 477.27 ng/ml



#32 AR-1260-2

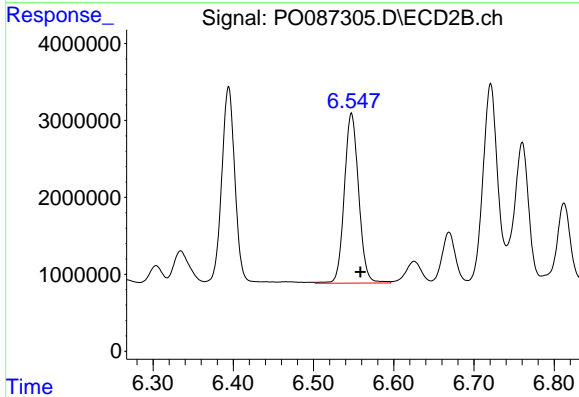
R.T.: 6.394 min
 Delta R.T.: -0.010 min
 Response: 29361874
 Conc: 524.19 ng/ml



#33 AR-1260-3

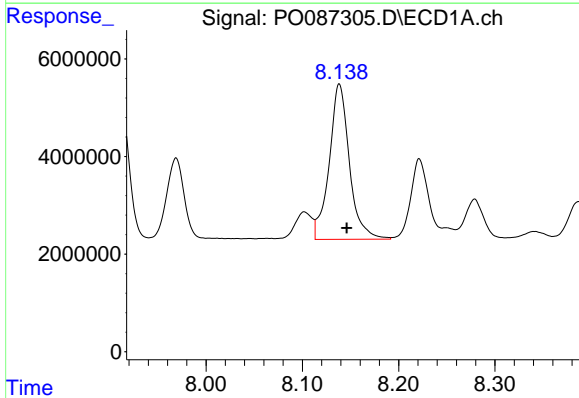
R.T.: 7.911 min
 Delta R.T.: -0.006 min
 Response: 40002880
 Conc: 471.88 ng/ml

Instrument :
 ECD_O
 ClientSampleId :



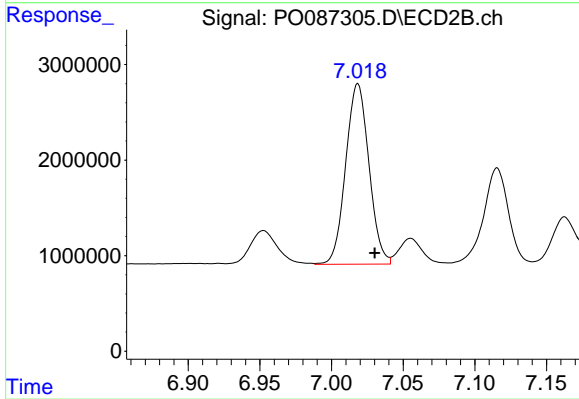
#33 AR-1260-3

R.T.: 6.547 min
 Delta R.T.: -0.011 min
 Response: 27457997
 Conc: 516.00 ng/ml



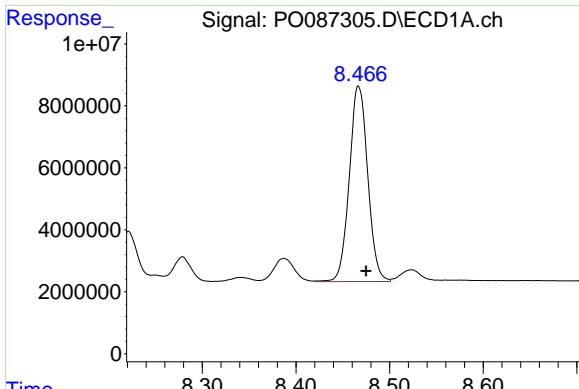
#34 AR-1260-4

R.T.: 8.138 min
 Delta R.T.: -0.008 min
 Response: 46478571
 Conc: 456.37 ng/ml



#34 AR-1260-4

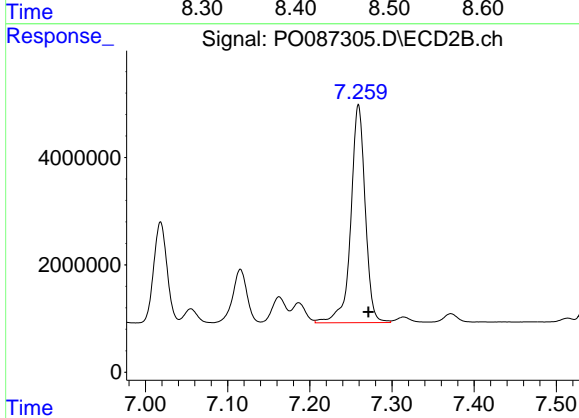
R.T.: 7.018 min
 Delta R.T.: -0.012 min
 Response: 21352913
 Conc: 529.83 ng/ml



#35 AR-1260-5

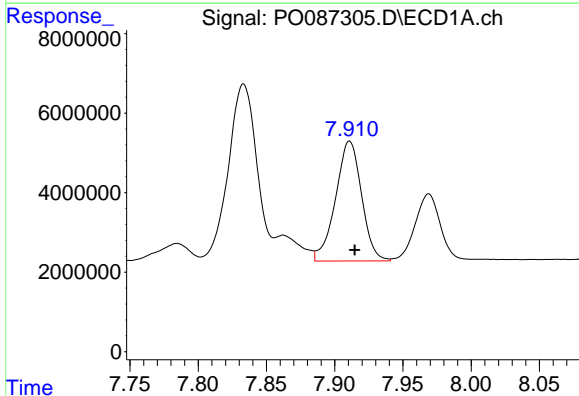
R.T.: 8.467 min
 Delta R.T.: -0.008 min
 Response: 86210385
 Conc: 474.34 ng/ml

Instrument :
 ECD_O
 ClientSampleId :



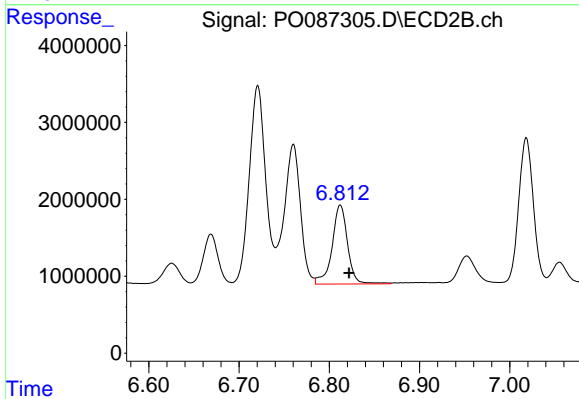
#35 AR-1260-5

R.T.: 7.259 min
 Delta R.T.: -0.012 min
 Response: 49519456
 Conc: 527.90 ng/ml



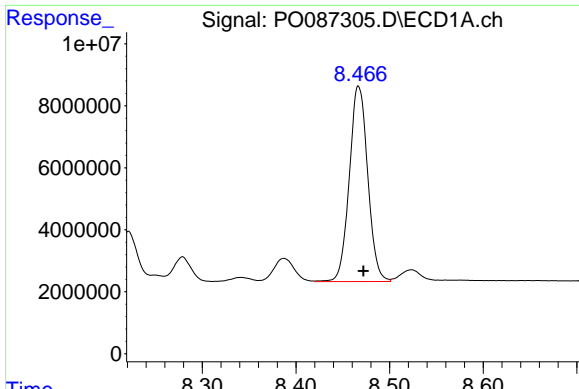
#36 AR-1262-1

R.T.: 7.911 min
 Delta R.T.: -0.004 min
 Response: 40002880
 Conc: 325.31 ng/ml



#36 AR-1262-1

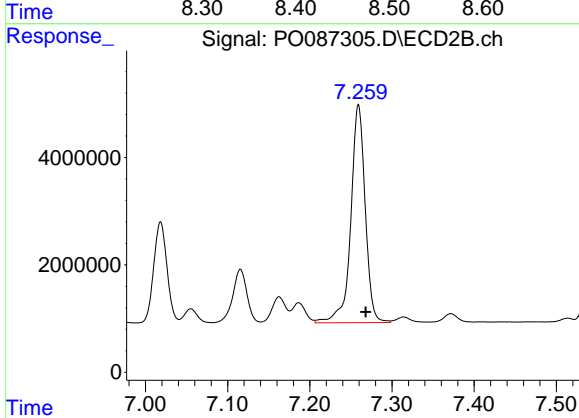
R.T.: 6.812 min
 Delta R.T.: -0.010 min
 Response: 12263685
 Conc: 506.90 ng/ml



#37 AR-1262-2

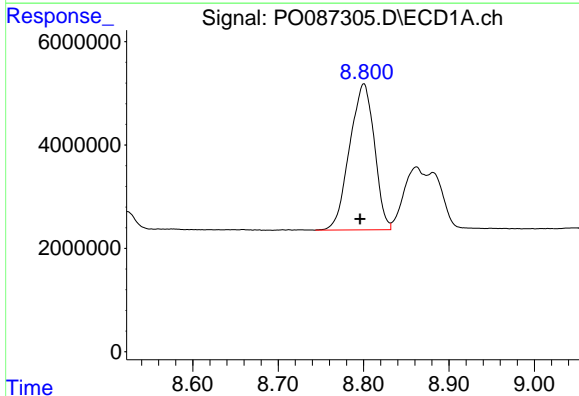
R.T.: 8.467 min
 Delta R.T.: -0.005 min
 Response: 86210385
 Conc: 420.02 ng/ml

Instrument :
 ECD_O
 ClientSampleId :



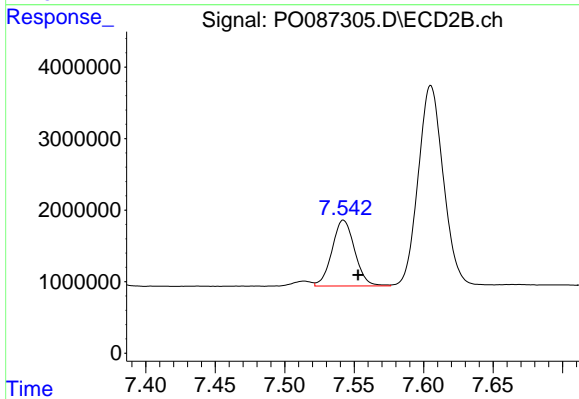
#37 AR-1262-2

R.T.: 7.259 min
 Delta R.T.: -0.009 min
 Response: 49519456
 Conc: 490.17 ng/ml



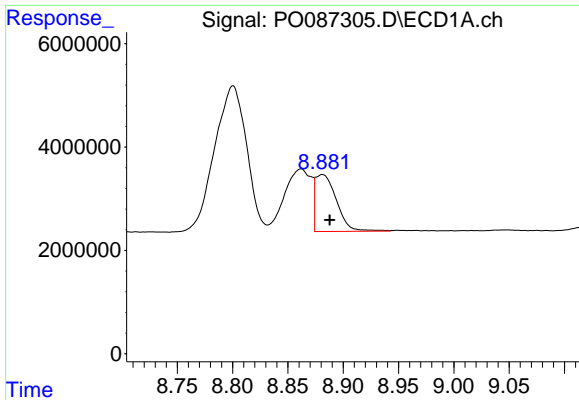
#38 AR-1262-3

R.T.: 8.800 min
 Delta R.T.: 0.005 min
 Response: 57017314
 Conc: 394.94 ng/ml



#38 AR-1262-3

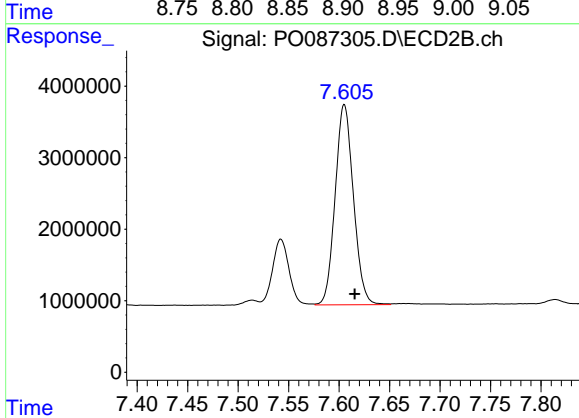
R.T.: 7.542 min
 Delta R.T.: -0.010 min
 Response: 10489769
 Conc: 259.01 ng/ml



#39 AR-1262-4

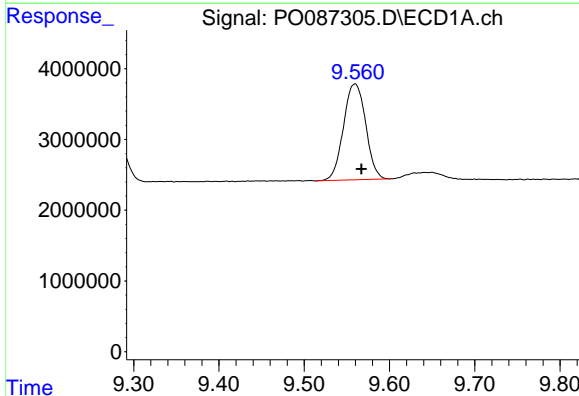
R.T.: 8.881 min
 Delta R.T.: -0.007 min
 Response: 14528706
 Conc: 205.77 ng/ml

Instrument :
 ECD_O
 ClientSampleId :



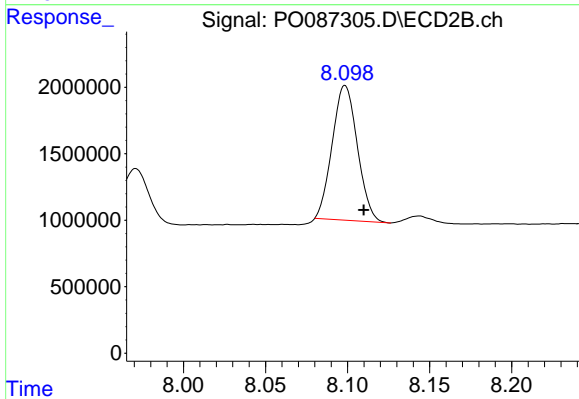
#39 AR-1262-4

R.T.: 7.605 min
 Delta R.T.: -0.010 min
 Response: 35226820
 Conc: 470.59 ng/ml



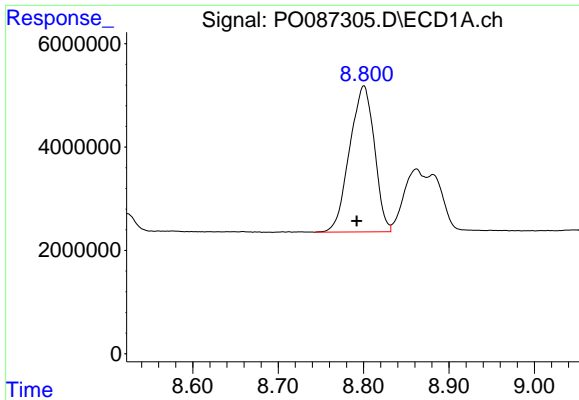
#40 AR-1262-5

R.T.: 9.560 min
 Delta R.T.: -0.008 min
 Response: 24560475
 Conc: 317.82 ng/ml



#40 AR-1262-5

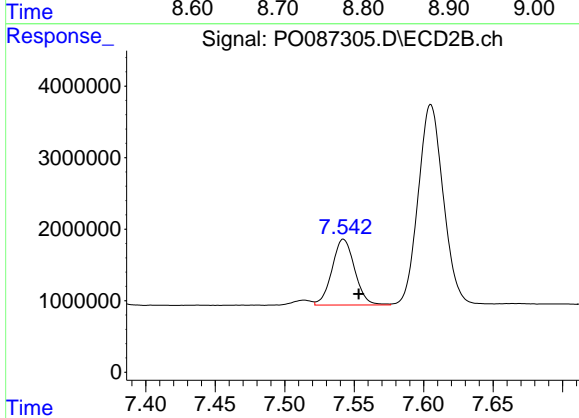
R.T.: 8.098 min
 Delta R.T.: -0.011 min
 Response: 10821171
 Conc: 314.55 ng/ml



#41 AR-1268-1

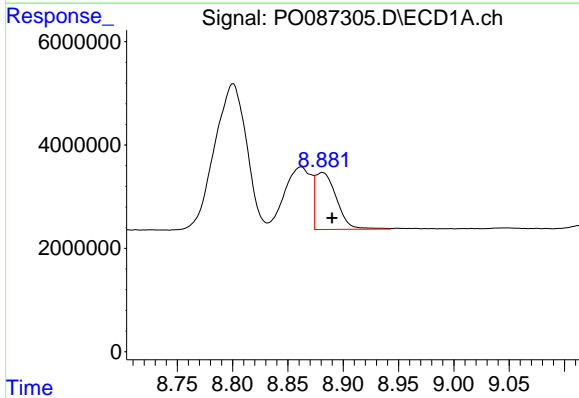
R.T.: 8.800 min
 Delta R.T.: 0.008 min
 Response: 57017314
 Conc: 221.80 ng/ml

Instrument :
 ECD_O
 ClientSampleId :



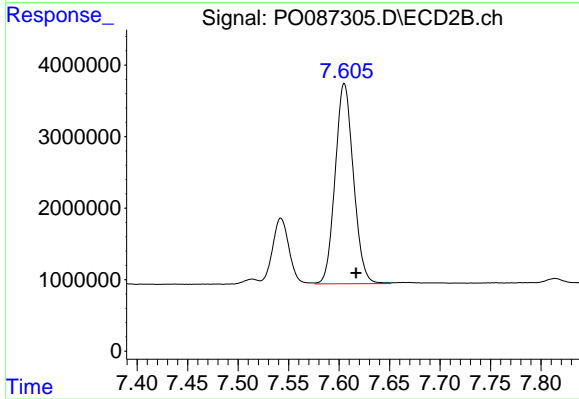
#41 AR-1268-1

R.T.: 7.542 min
 Delta R.T.: -0.011 min
 Response: 10489769
 Conc: 87.82 ng/ml



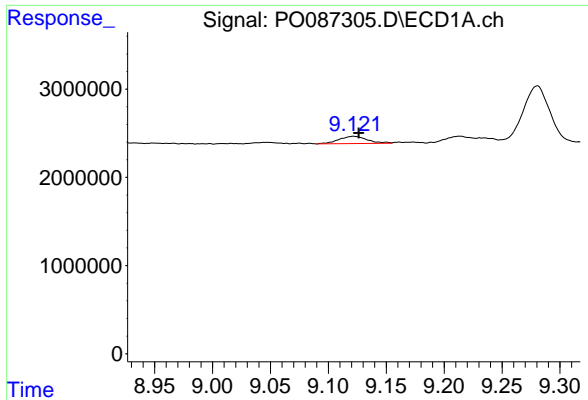
#42 AR-1268-2

R.T.: 8.881 min
 Delta R.T.: -0.009 min
 Response: 14528706
 Conc: 61.36 ng/ml



#42 AR-1268-2

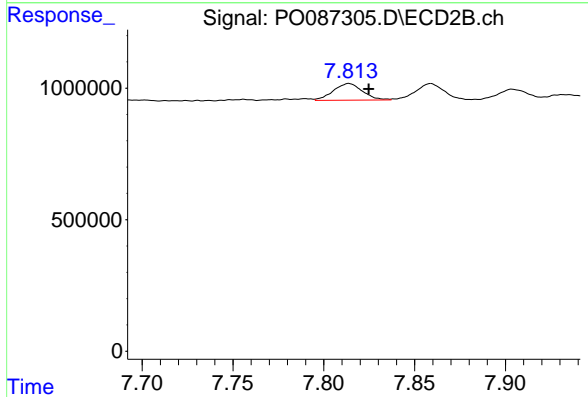
R.T.: 7.605 min
 Delta R.T.: -0.011 min
 Response: 35226820
 Conc: 323.53 ng/ml



#43 AR-1268-3

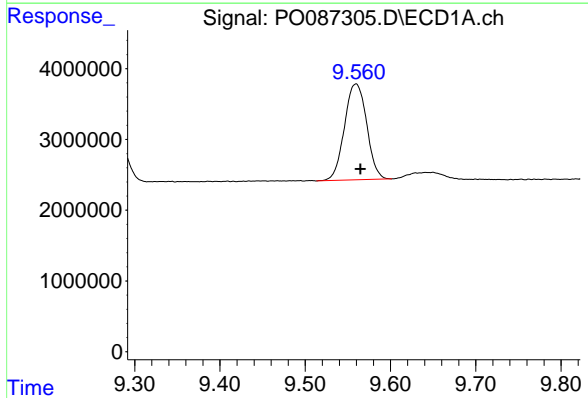
R.T.: 9.122 min
 Delta R.T.: -0.005 min
 Response: 1435858
 Conc: 7.17 ng/ml

Instrument :
 ECD_O
 ClientSampleId :



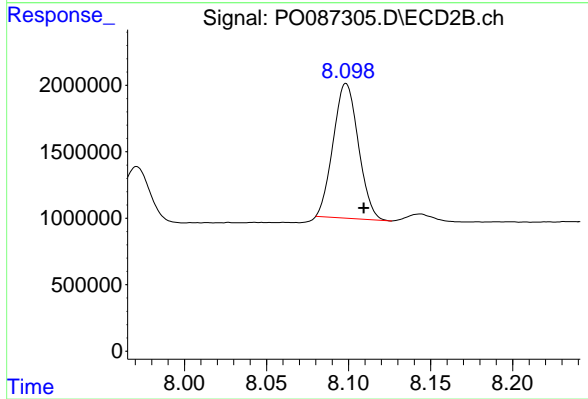
#43 AR-1268-3

R.T.: 7.814 min
 Delta R.T.: -0.011 min
 Response: 709812
 Conc: 7.73 ng/ml



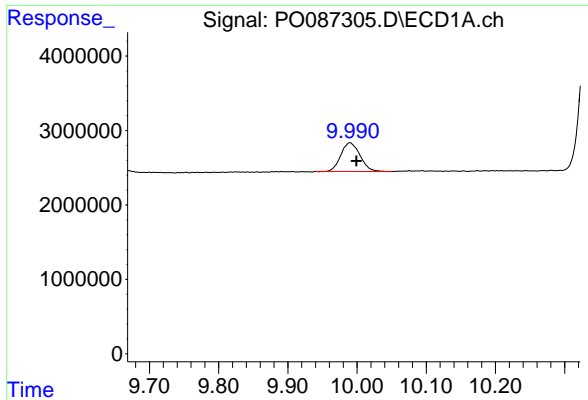
#44 AR-1268-4

R.T.: 9.560 min
 Delta R.T.: -0.005 min
 Response: 24560475
 Conc: 272.44 ng/ml



#44 AR-1268-4

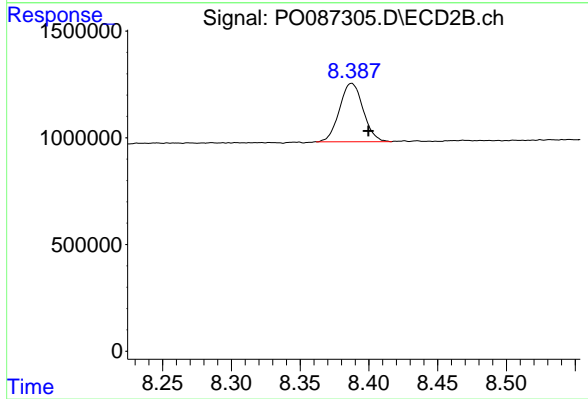
R.T.: 8.098 min
 Delta R.T.: -0.011 min
 Response: 10821171
 Conc: 272.33 ng/ml



#45 AR-1268-5

R.T.: 9.990 min
Delta R.T.: -0.009 min
Response: 7442036
Conc: 11.63 ng/ml

Instrument :
ECD_O
ClientSampleId :



#45 AR-1268-5

R.T.: 8.387 min
Delta R.T.: -0.012 min
Response: 3273456
Conc: 11.38 ng/ml