

Data Path : Z:\pestpcbsrv\HPCHEM1\ECD_0\Data\P0062222\
 Data File : P0087251.D
 Signal(s) : Signal #1: ECD1A.ch Signal #2: ECD2B.ch
 Acq On : 22 Jun 2022 10:48
 Operator : YP/AJ
 Sample : PB145720BL
 Misc :
 ALS Vial : 8 Sample Multiplier: 1

Instrument :
 ECD_0
 ClientSampleId :
 PB145720BL

Integration File signal 1: autoint1.e
 Integration File signal 2: autoint2.e
 Quant Time: Jun 22 11:25:36 2022
 Quant Method : Z:\pestpcbsrv\HPCHEM1\ECD_0\methods\P0060922.M
 Quant Title : GC EXTRACTABLES
 QLast Update : Fri Jun 10 04:33:49 2022
 Response via : Initial Calibration
 Integrator: ChemStation

Volume Inj. : 2 µl
 Signal #1 Phase : ZB-MR1 Signal #2 Phase: ZB-MR2
 Signal #1 Info : 30Mx0.32mmx 0.50µ Signal #2 Info : 30M x 0.32mm x 0.25µm

Compound	RT#1	RT#2	Resp#1	Resp#2	ng/ml	ng/ml

System Monitoring Compounds						
1) SA Tetrachlo...	4.492	3.640	44704521	23551882	19.129	20.918
2) SA Decachlor...	10.341	8.642	39326911	16117658	21.369	20.499

Target Compounds

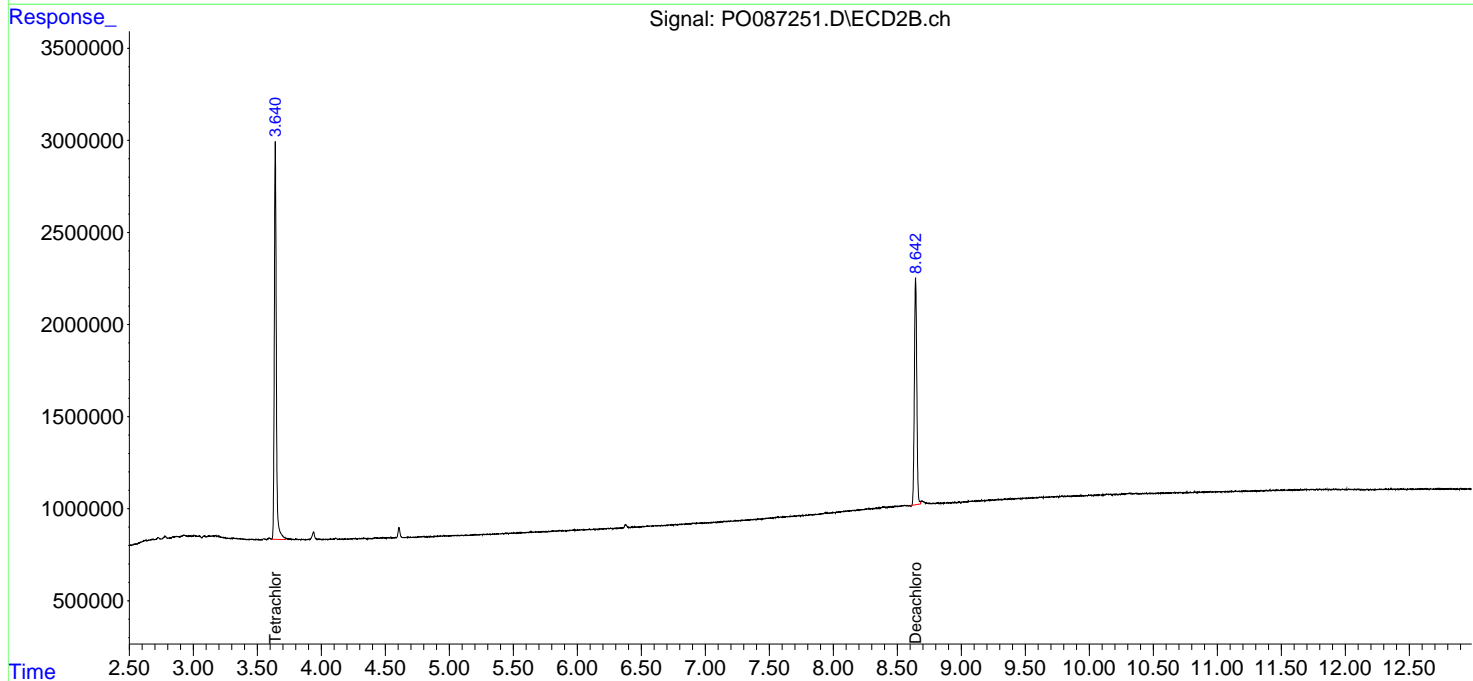
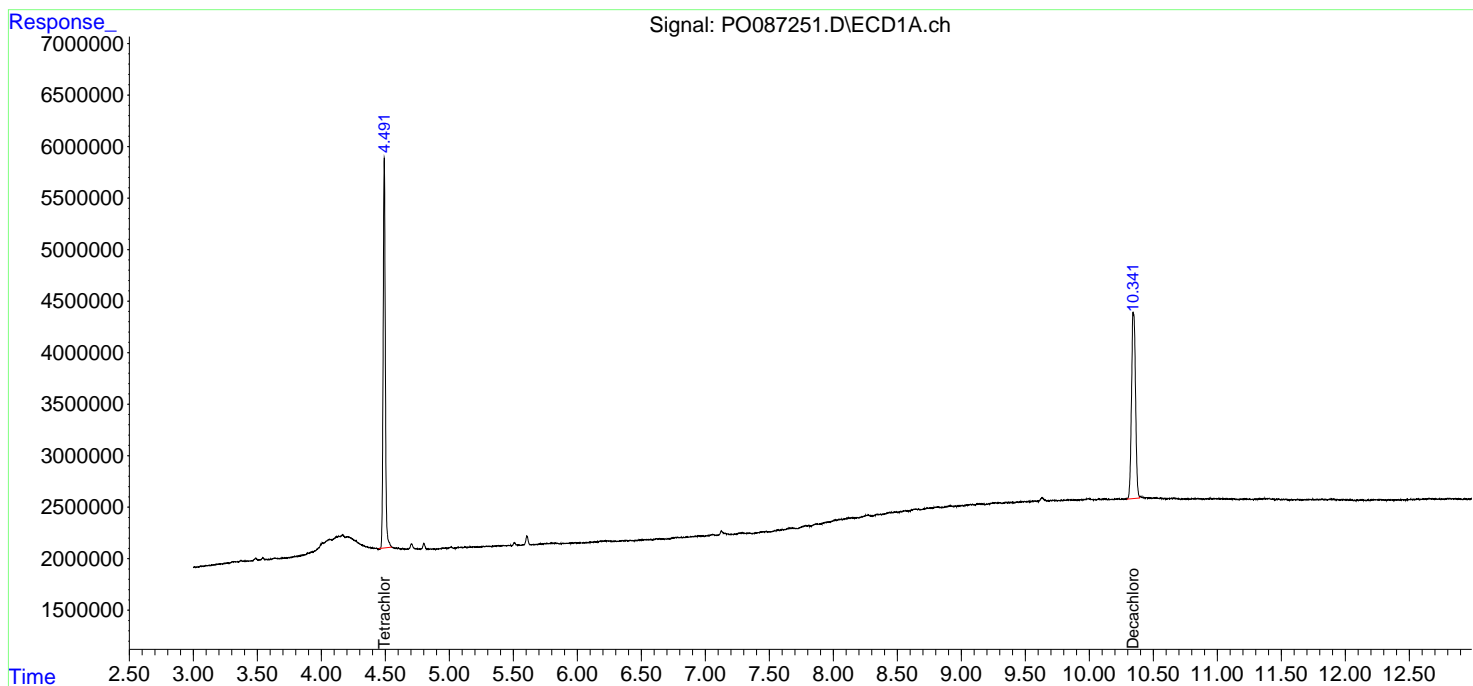
(f)=RT Delta > 1/2 Window (#)=Amounts differ by > 25% (m)=manual int.

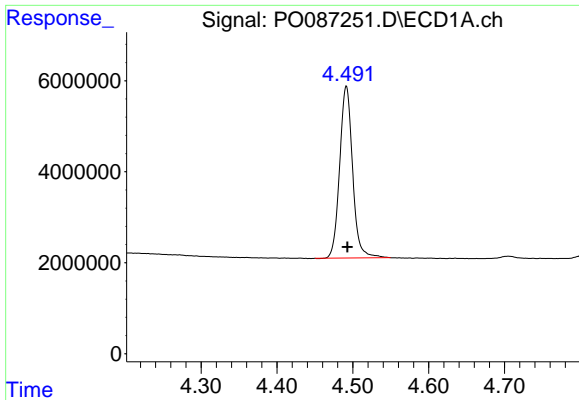
Data Path : Z:\pestpcbsrv\HPCHEM1\ECD_O\Data\P0062222\
 Data File : P0087251.D
 Signal(s) : Signal #1: ECD1A.ch Signal #2: ECD2B.ch
 Acq On : 22 Jun 2022 10:48
 Operator : YP/AJ
 Sample : PB145720BL
 Misc :
 ALS Vial : 8 Sample Multiplier: 1

Instrument :
 ECD_O
 ClientSampleId :
 PB145720BL

Integration File signal 1: autoint1.e
 Integration File signal 2: autoint2.e
 Quant Time: Jun 22 11:25:36 2022
 Quant Method : Z:\pestpcbsrv\HPCHEM1\ECD_O\methods\P0060922.M
 Quant Title : GC EXTRACTABLES
 QLast Update : Fri Jun 10 04:33:49 2022
 Response via : Initial Calibration
 Integrator: ChemStation

Volume Inj. : 2 µl
 Signal #1 Phase : ZB-MR1 Signal #2 Phase: ZB-MR2
 Signal #1 Info : 30Mx0.32mmx 0.50µ Signal #2 Info : 30M x 0.32mm x 0.25µm

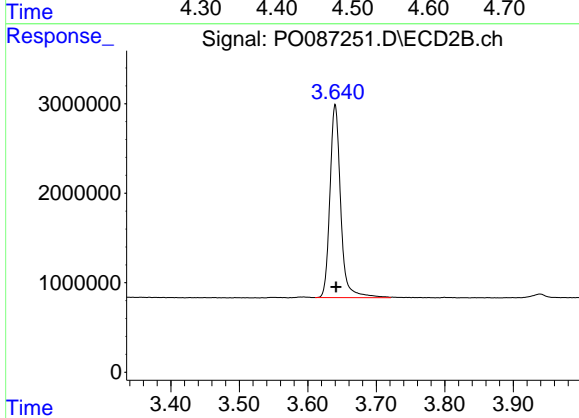




#1 Tetrachloro-m-xylene

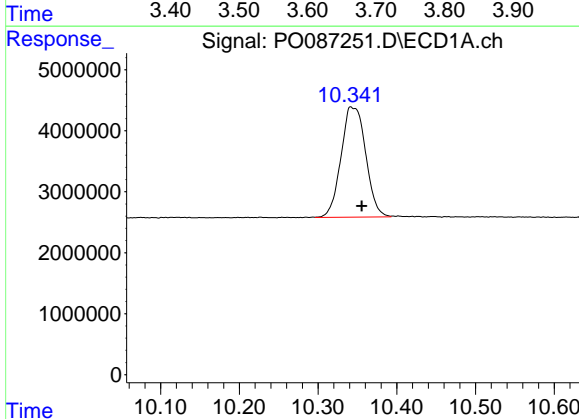
R.T.: 4.492 min
 Delta R.T.: -0.001 min
 Response: 44704521
 Conc: 19.13 ng/ml

Instrument :
 ECD_O
 ClientSampleId :
 PB145720BL



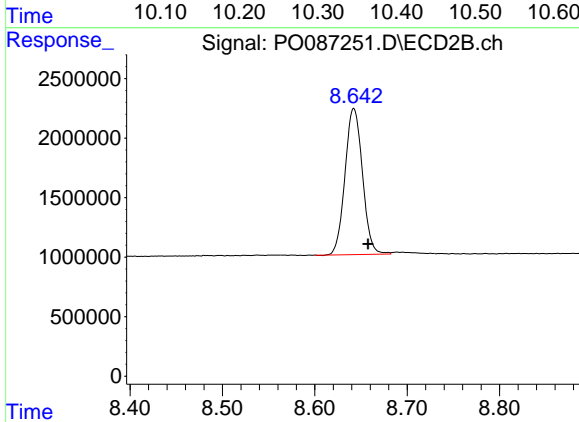
#1 Tetrachloro-m-xylene

R.T.: 3.640 min
 Delta R.T.: 0.000 min
 Response: 23551882
 Conc: 20.92 ng/ml



#2 Decachlorobiphenyl

R.T.: 10.341 min
 Delta R.T.: -0.014 min
 Response: 39326911
 Conc: 21.37 ng/ml



#2 Decachlorobiphenyl

R.T.: 8.642 min
 Delta R.T.: -0.015 min
 Response: 16117658
 Conc: 20.50 ng/ml