

Data Path : Z:\pestpcbsrv\HPCHEM1\ECD\_0\Data\P0062222\  
 Data File : P0087261.D  
 Signal(s) : Signal #1: ECD1A.ch Signal #2: ECD2B.ch  
 Acq On : 22 Jun 2022 15:01  
 Operator : YP/AJ  
 Sample : AR1254CCC500  
 Misc :  
 ALS Vial : 6 Sample Multiplier: 1

Instrument :  
 ECD\_0  
 ClientSampleId :  
 AR1254CCC500

Integration File signal 1: autoint1.e  
 Integration File signal 2: autoint2.e  
 Quant Time: Jun 22 15:30:05 2022  
 Quant Method : Z:\pestpcbsrv\HPCHEM1\ECD\_0\methods\P0060922.M  
 Quant Title : GC EXTRACTABLES  
 QLast Update : Fri Jun 10 04:33:49 2022  
 Response via : Initial Calibration  
 Integrator: ChemStation

Volume Inj. : 2 µl  
 Signal #1 Phase : ZB-MR1 Signal #2 Phase: ZB-MR2  
 Signal #1 Info : 30Mx0.32mmx 0.50µ Signal #2 Info : 30M x 0.32mm x 0.25µm

Compound	RT#1	RT#2	Resp#1	Resp#2	ng/ml	ng/ml
-----						
System Monitoring Compounds						
1) SA Tetrachlo...	4.493	3.641	108.4E6	56179573	46.403	49.896
2) SA Decachlor...	10.347	8.644	85010367	35178417	46.193	44.742
Target Compounds						
26) L6 AR-1254-1	6.539	5.529	37472936	23062833	429.802	476.524
27) L6 AR-1254-2	6.759	5.676	56590257	20386948	433.329	477.988
28) L6 AR-1254-3	7.127	6.079	59319498	32626797	454.656	477.405
29) L6 AR-1254-4	7.415	6.307	44349673	20389085	464.180	483.290
30) L6 AR-1254-5	7.837	6.724	46923557	29161235	449.132	480.180
-----						

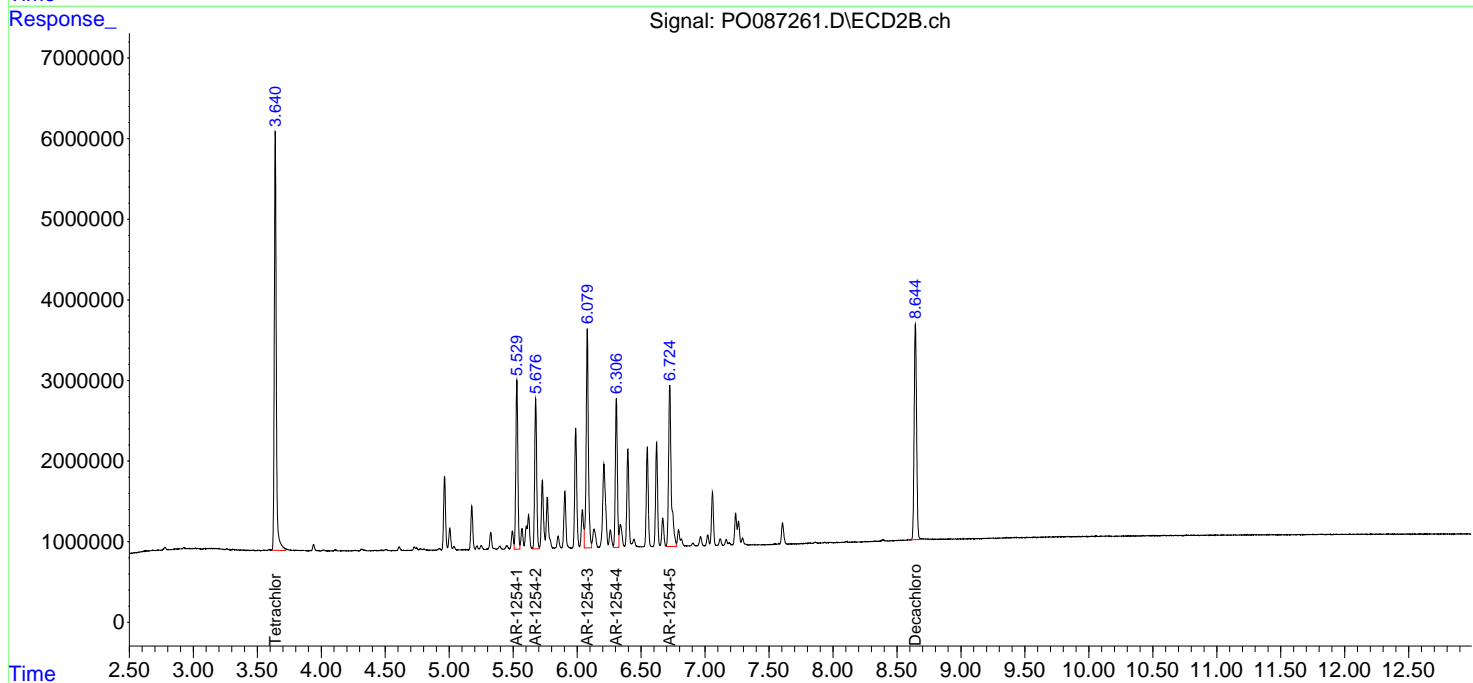
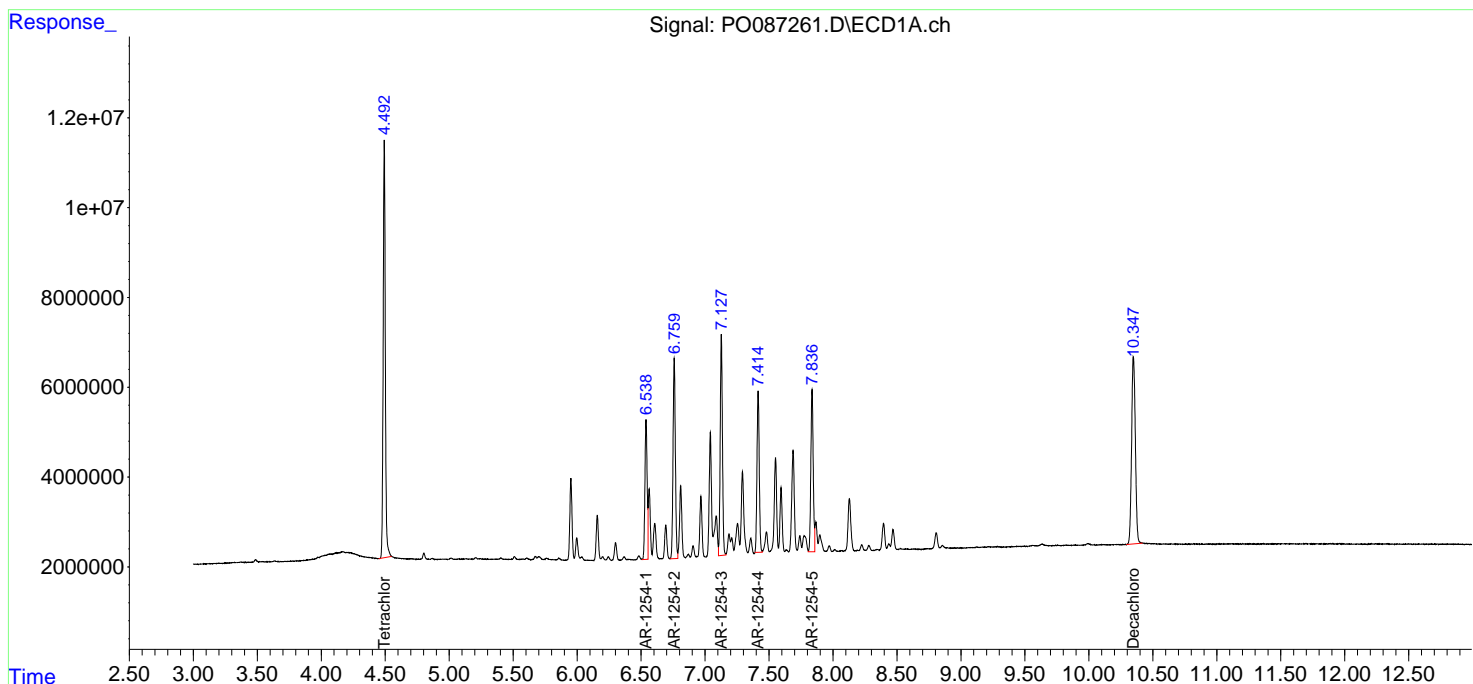
(f)=RT Delta > 1/2 Window (#)=Amounts differ by > 25% (m)=manual int.

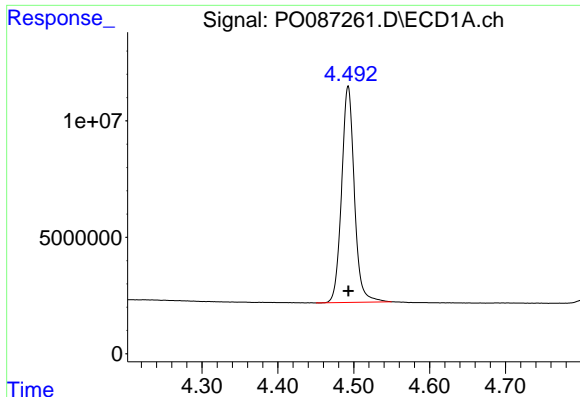
Data Path : Z:\pestpcbsrv\HPCHEM1\ECD\_O\Data\P0062222\  
 Data File : P0087261.D  
 Signal(s) : Signal #1: ECD1A.ch Signal #2: ECD2B.ch  
 Acq On : 22 Jun 2022 15:01  
 Operator : YP/AJ  
 Sample : AR1254CCC500  
 Misc :  
 ALS Vial : 6 Sample Multiplier: 1

Instrument :  
 ECD\_O  
 ClientSampleId :  
 AR1254CCC500

Integration File signal 1: autoint1.e  
 Integration File signal 2: autoint2.e  
 Quant Time: Jun 22 15:30:05 2022  
 Quant Method : Z:\pestpcbsrv\HPCHEM1\ECD\_O\methods\P0060922.M  
 Quant Title : GC EXTRACTABLES  
 QLast Update : Fri Jun 10 04:33:49 2022  
 Response via : Initial Calibration  
 Integrator: ChemStation

Volume Inj. : 2 µl  
 Signal #1 Phase : ZB-MR1 Signal #2 Phase: ZB-MR2  
 Signal #1 Info : 30Mx0.32mmx 0.50µ Signal #2 Info : 30M x 0.32mm x 0.25µm

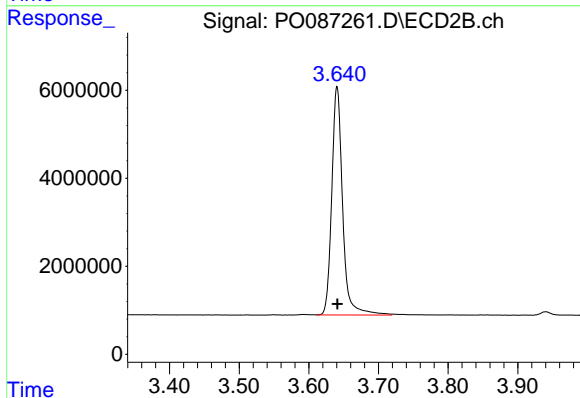




#1 Tetrachloro-m-xylene

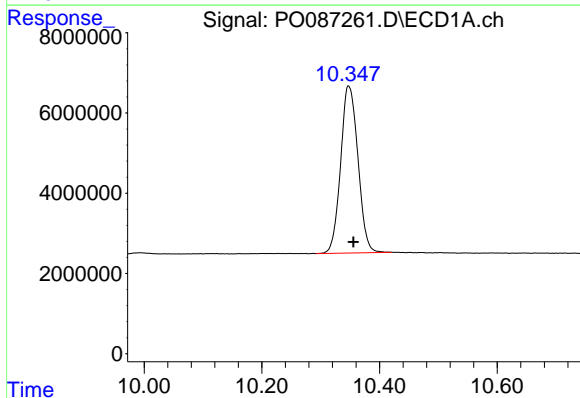
R.T.: 4.493 min  
 Delta R.T.: 0.000 min  
 Response: 108445540  
 Conc: 46.40 ng/ml

Instrument :  
 ECD\_O  
 ClientSampleId :  
 AR1254CCC500



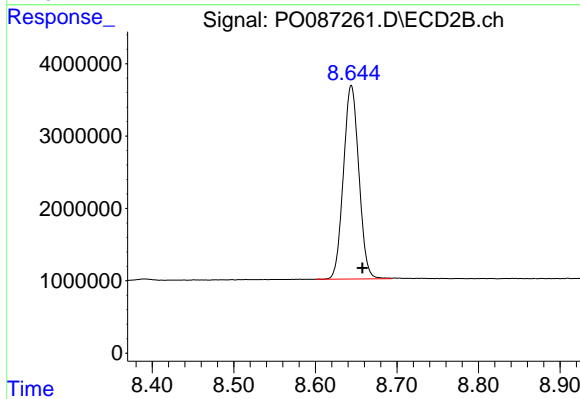
#1 Tetrachloro-m-xylene

R.T.: 3.641 min  
 Delta R.T.: 0.000 min  
 Response: 56179573  
 Conc: 49.90 ng/ml



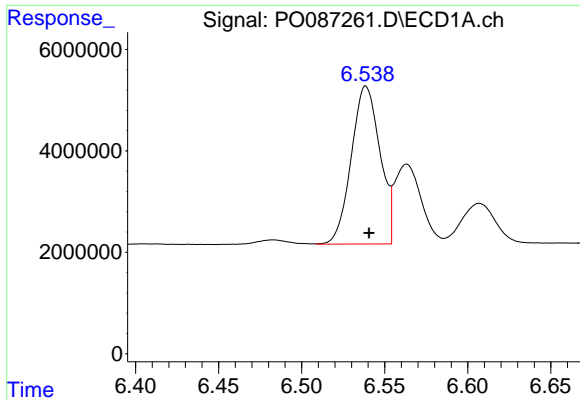
#2 Decachlorobiphenyl

R.T.: 10.347 min  
 Delta R.T.: -0.008 min  
 Response: 85010367  
 Conc: 46.19 ng/ml



#2 Decachlorobiphenyl

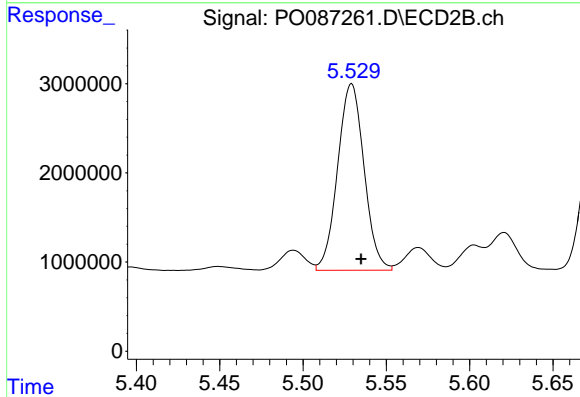
R.T.: 8.644 min  
 Delta R.T.: -0.014 min  
 Response: 35178417  
 Conc: 44.74 ng/ml



#26 AR-1254-1

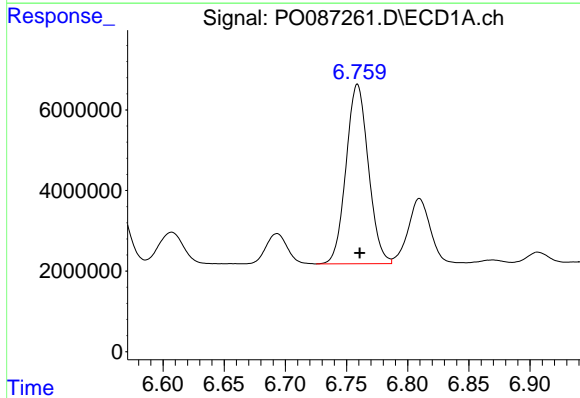
R.T.: 6.539 min  
 Delta R.T.: -0.002 min  
 Response: 37472936  
 Conc: 429.80 ng/ml

Instrument :  
 ECD\_O  
 ClientSampleId :  
 AR1254CCC500



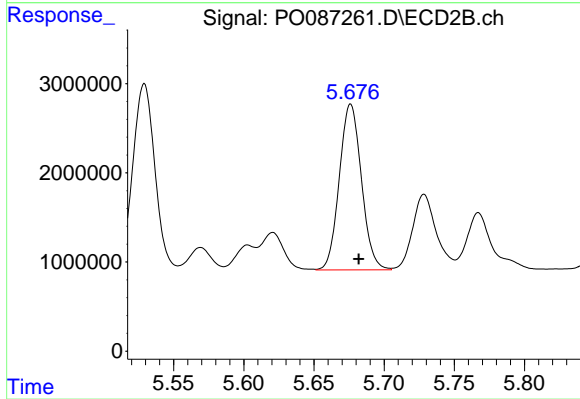
#26 AR-1254-1

R.T.: 5.529 min  
 Delta R.T.: -0.006 min  
 Response: 23062833  
 Conc: 476.52 ng/ml



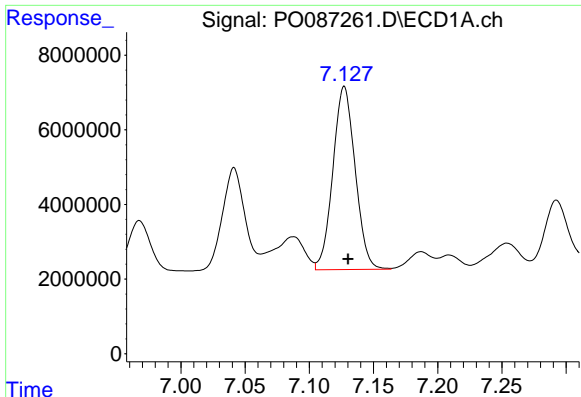
#27 AR-1254-2

R.T.: 6.759 min  
 Delta R.T.: -0.002 min  
 Response: 56590257  
 Conc: 433.33 ng/ml



#27 AR-1254-2

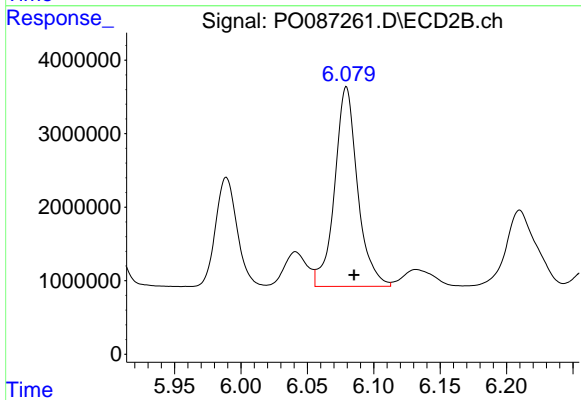
R.T.: 5.676 min  
 Delta R.T.: -0.006 min  
 Response: 20386948  
 Conc: 477.99 ng/ml



#28 AR-1254-3

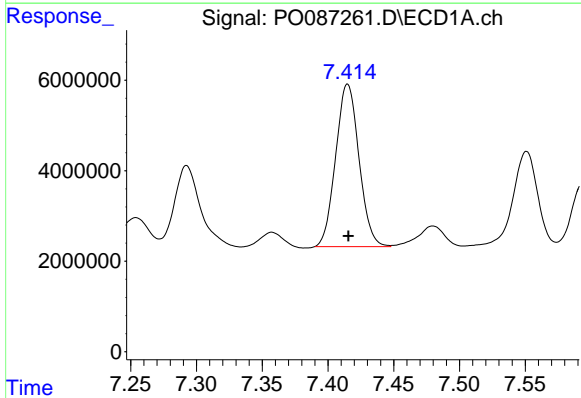
R.T.: 7.127 min  
 Delta R.T.: -0.003 min  
 Response: 59319498  
 Conc: 454.66 ng/ml

Instrument :  
 ECD\_O  
 ClientSampleId :  
 AR1254CCC500



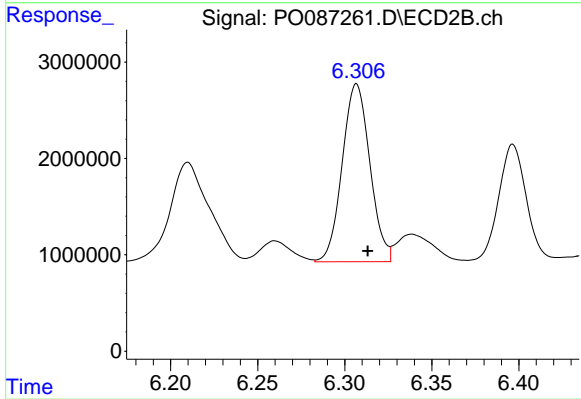
#28 AR-1254-3

R.T.: 6.079 min  
 Delta R.T.: -0.006 min  
 Response: 32626797  
 Conc: 477.41 ng/ml



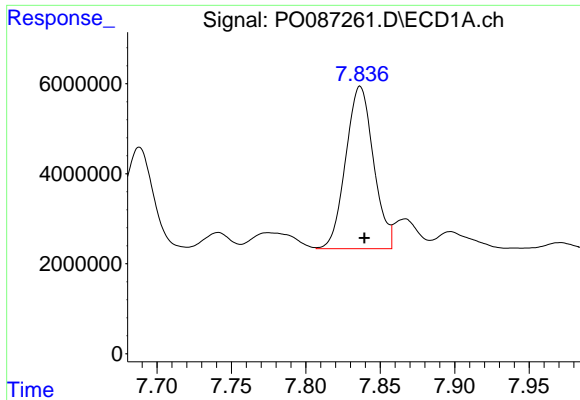
#29 AR-1254-4

R.T.: 7.415 min  
 Delta R.T.: 0.000 min  
 Response: 44349673  
 Conc: 464.18 ng/ml



#29 AR-1254-4

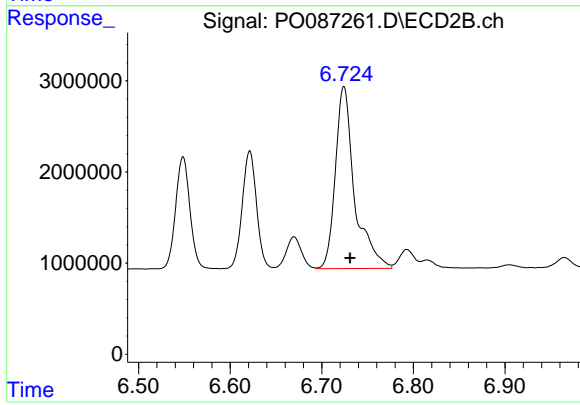
R.T.: 6.307 min  
 Delta R.T.: -0.006 min  
 Response: 20389085  
 Conc: 483.29 ng/ml



#30 AR-1254-5

R.T.: 7.837 min  
Delta R.T.: -0.003 min  
Response: 46923557  
Conc: 449.13 ng/ml

Instrument :  
ECD\_O  
ClientSampleId :  
AR1254CCC500



#30 AR-1254-5

R.T.: 6.724 min  
Delta R.T.: -0.007 min  
Response: 29161235  
Conc: 480.18 ng/ml