

Data Path : Z:\pestpcbsrv\HPCHEM1\ECD_0\Data\P0062222\
 Data File : P0087295.D
 Signal(s) : Signal #1: ECD1A.ch Signal #2: ECD2B.ch
 Acq On : 23 Jun 2022 03:06
 Operator : YP/AJ
 Sample : PB145763BL
 Misc :
 ALS Vial : 37 Sample Multiplier: 1

Instrument :
 ECD_0
ClientSampleId :
 PB145763BL

Integration File signal 1: autoint1.e
 Integration File signal 2: autoint2.e
 Quant Time: Jun 23 07:46:42 2022
 Quant Method : Z:\pestpcbsrv\HPCHEM1\ECD_0\methods\P0060922.M
 Quant Title : GC EXTRACTABLES
 QLast Update : Fri Jun 10 04:33:49 2022
 Response via : Initial Calibration
 Integrator: ChemStation

Volume Inj. : 2 µl
 Signal #1 Phase : ZB-MR1 Signal #2 Phase: ZB-MR2
 Signal #1 Info : 30Mx0.32mmx 0.50µ Signal #2 Info : 30M x 0.32mm x 0.25µm

| Compound | RT#1 | RT#2 | Resp#1 | Resp#2 | ng/ml | ng/ml |
|-----------------------------|--------|-------|----------|----------|--------|--------|
| ----- | | | | | | |
| System Monitoring Compounds | | | | | | |
| 1) SA Tetrachlo... | 4.492 | 3.640 | 42396520 | 21515560 | 18.141 | 19.109 |
| 2) SA Decachlor... | 10.346 | 8.642 | 36382369 | 15431824 | 19.769 | 19.627 |

Target Compounds

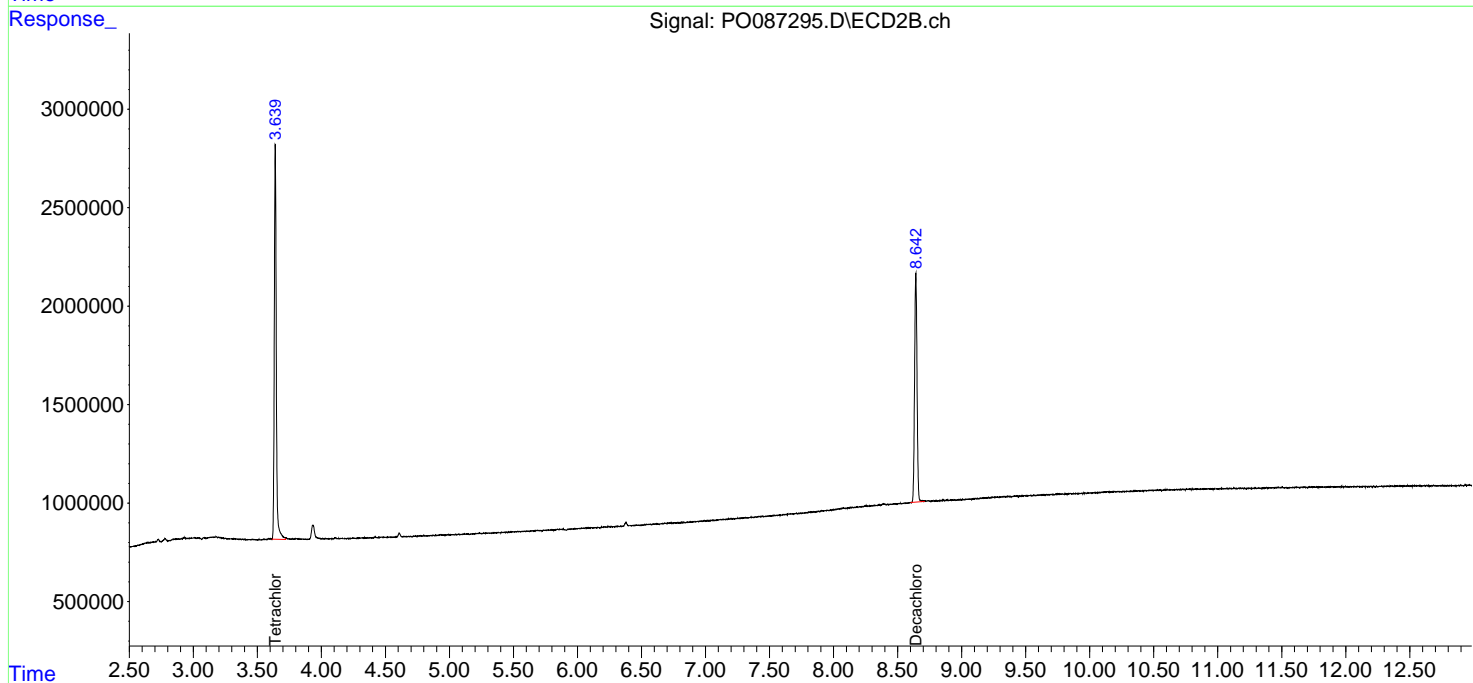
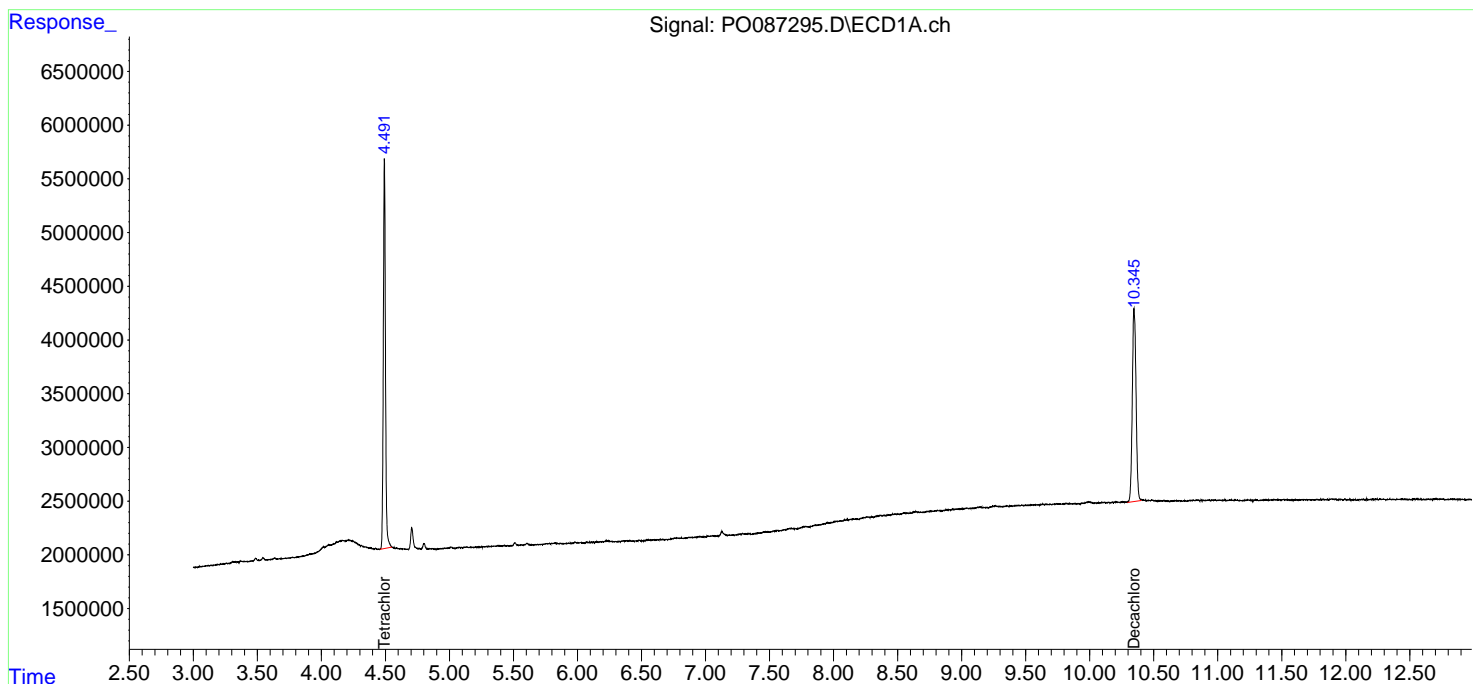
 (f)=RT Delta > 1/2 Window (#)=Amounts differ by > 25% (m)=manual int.

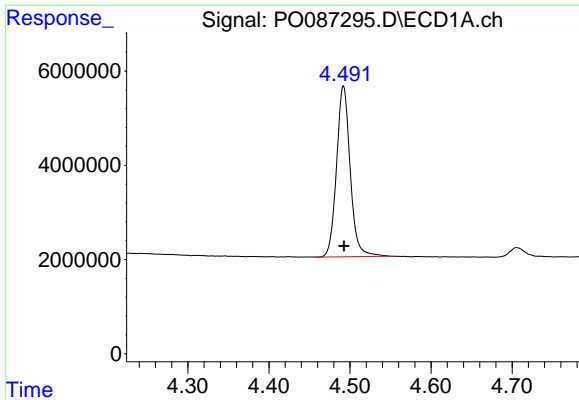
Data Path : Z:\pestpcbsrv\HPCHEM1\ECD_O\Data\P0062222\
 Data File : P0087295.D
 Signal(s) : Signal #1: ECD1A.ch Signal #2: ECD2B.ch
 Acq On : 23 Jun 2022 03:06
 Operator : YP/AJ
 Sample : PB145763BL
 Misc :
 ALS Vial : 37 Sample Multiplier: 1

Instrument :
 ECD_O
 ClientSampleId :
 PB145763BL

Integration File signal 1: autoint1.e
 Integration File signal 2: autoint2.e
 Quant Time: Jun 23 07:46:42 2022
 Quant Method : Z:\pestpcbsrv\HPCHEM1\ECD_O\methods\P0060922.M
 Quant Title : GC EXTRACTABLES
 QLast Update : Fri Jun 10 04:33:49 2022
 Response via : Initial Calibration
 Integrator: ChemStation

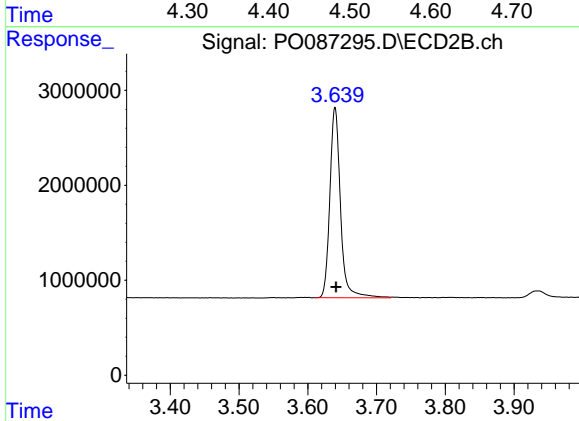
Volume Inj. : 2 µl
 Signal #1 Phase : ZB-MR1 Signal #2 Phase: ZB-MR2
 Signal #1 Info : 30Mx0.32mmx 0.50µ Signal #2 Info : 30M x 0.32mm x 0.25µm



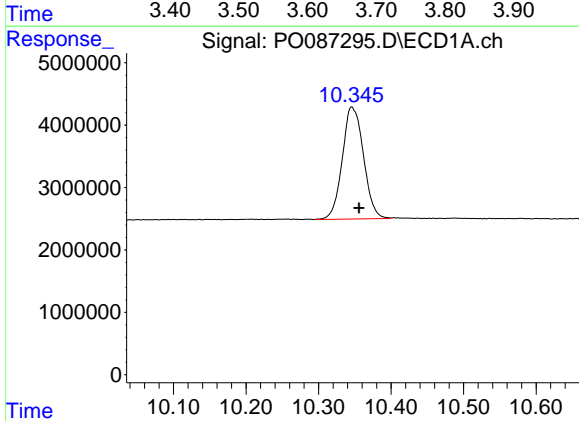


#1 Tetrachloro-m-xylene
 R.T.: 4.492 min
 Delta R.T.: -0.001 min
 Response: 42396520
 Conc: 18.14 ng/ml

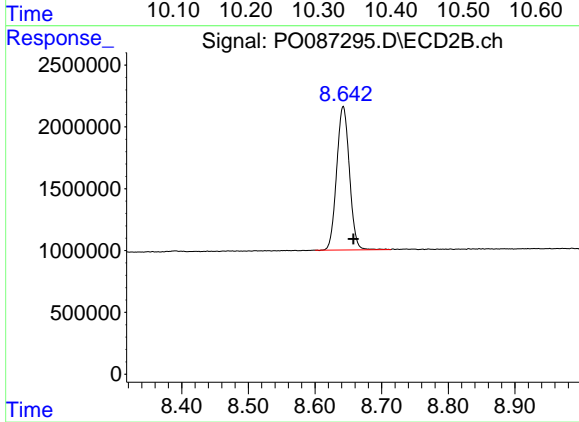
Instrument :
 ECD_O
 ClientSampleId :
 PB145763BL



#1 Tetrachloro-m-xylene
 R.T.: 3.640 min
 Delta R.T.: -0.001 min
 Response: 21515560
 Conc: 19.11 ng/ml



#2 Decachlorobiphenyl
 R.T.: 10.346 min
 Delta R.T.: -0.010 min
 Response: 36382369
 Conc: 19.77 ng/ml



#2 Decachlorobiphenyl
 R.T.: 8.642 min
 Delta R.T.: -0.015 min
 Response: 15431824
 Conc: 19.63 ng/ml