

Data Path : Z:\pestpcbsrv\HPCHEM1\ECD\_0\Data\P0062223\  
 Data File : P0095891.D  
 Signal(s) : Signal #1: ECD1A.ch Signal #2: ECD2B.ch  
 Acq On : 22 Jun 2023 23:54  
 Operator : YP/AJ  
 Sample : AR1242CCC500  
 Misc :  
 ALS Vial : 4 Sample Multiplier: 1

Instrument :  
 ECD\_0  
 ClientSampleId :  
 AR1242CCC500

Integration File signal 1: autoint1.e  
 Integration File signal 2: autoint2.e  
 Quant Time: Jun 23 04:15:56 2023  
 Quant Method : Z:\pestpcbsrv\HPCHEM1\ECD\_0\methods\P0062023.M  
 Quant Title : GC EXTRACTABLES  
 QLast Update : Wed Jun 21 13:08:39 2023  
 Response via : Initial Calibration  
 Integrator: ChemStation

Volume Inj. : 2 µl  
 Signal #1 Phase : ZB-MR1 Signal #2 Phase: ZB-MR2  
 Signal #1 Info : 30Mx0.32mmx 0.50µ Signal #2 Info : 30M x 0.32mm x 0.25µm

Compound	RT#1	RT#2	Resp#1	Resp#2	ng/ml	ng/ml
System Monitoring Compounds						
1) SA Tetrachlo...	4.414	3.634	153.9E6	69796313	52.906	51.427
2) SA Decachlor...	10.230	8.669	114.6E6	59645264	55.305	48.642
Target Compounds						
3) L1 AR-1016-1	5.591	4.723	34296651	18055773	415.590	395.091
4) L1 AR-1016-2	5.614	4.742	48782551	24447182	409.414	392.225
5) L1 AR-1016-3	5.676	4.919	31746691	13508718	411.488	400.972
6) L1 AR-1016-4	5.775	4.961	24641551	12149897	411.139	368.765
7) L1 AR-1016-5	6.073	5.176	26850229	15650694	432.105	429.451
8) L2 AR-1221-1	4.619	3.847	3927858	1983008	109.820	115.350
9) L2 AR-1221-2	4.712	3.934	6151339	3019155	231.273	228.926
10) L2 AR-1221-3	4.787	4.010	21549408	10694282	270.035	269.695
11) L3 AR-1232-1	4.787	4.010	21549408	10694282	366.448	355.712
12) L3 AR-1232-2	5.322	4.742	28578453	24447182	821.601	822.472
13) L3 AR-1232-3	5.614	4.919	48782551	13508718	857.977	845.739
14) L3 AR-1232-4	5.775	5.003	24641551	14705119	860.694	936.278
15) L3 AR-1232-5	5.868	5.176	24360753	15650694	980.798	869.723
16) L4 AR-1242-1	5.591	4.723	34296651	18055773	518.859	499.437
17) L4 AR-1242-2	5.614	4.742	48782551	24447182	511.621	498.344
18) L4 AR-1242-3	5.676	4.919	31746691	13508718	500.375	503.778
19) L4 AR-1242-4	5.775	5.003	24641551	14705119	503.550	497.383
20) L4 AR-1242-5	6.518	5.529	22957033	17668548	464.286	497.700
21) L5 AR-1248-1	5.591	4.723	34296651	18055773	677.525	665.735
22) L5 AR-1248-2	5.868	4.961	24360753	12149897	295.868	303.848
23) L5 AR-1248-3	6.073	5.003	26850229	14705119	311.947	341.771
24) L5 AR-1248-4	6.479	5.176	22440001	15650694	269.997	300.901
25) L5 AR-1248-5	6.518	5.570	22957033	13967857	273.106	278.425
26) L6 AR-1254-1	6.452	5.529	19197564	17668548	201.621	238.559
27) L6 AR-1254-2	6.676	5.677	23110445	6222170	166.406	91.178 #
28) L6 AR-1254-3	7.041	6.082	11211462	7645946	82.985	76.782
29) L6 AR-1254-4	7.329	6.312	7061574	4874493	78.753	82.591
30) L6 AR-1254-5	7.751	6.732	3904833	3267803	37.960	36.648
31) L7 AR-1260-1	7.208	6.227	2295259	4177626	20.187	58.208 #
32) L7 AR-1260-2	7.465	6.402	1913674	1495479	15.760	17.953
33) L7 AR-1260-3	7.751	6.556	3904833	1514296	28.166	19.658 #
34) L7 AR-1260-4	8.040	7.069f	1944264	729466	20.335	12.788 #
35) L7 AR-1260-5	8.378	7.274	751215	299044	4.500	2.330 #
36) L8 AR-1262-1	7.822	6.805	259968	786642	1.937	20.566 #
37) L8 AR-1262-2	8.378	7.069f	751215	729466	3.626	9.252 #
38) L8 AR-1262-3	8.711	7.557	792476	358328	5.236	5.782
39) L8 AR-1262-4	8.800	7.621	35460	356208	0.294	3.277 #
40) L8 AR-1262-5	9.477	0.000	37103	0	0.491	N.D. #
41) L9 AR-1268-1	8.711	7.557	792476	358328	2.898	2.027 #

Data Path : Z:\pestpcbsrv\HPCHEM1\ECD\_0\Data\P0062223\  
 Data File : P0095891.D  
 Signal(s) : Signal #1: ECD1A.ch Signal #2: ECD2B.ch  
 Acq On : 22 Jun 2023 23:54  
 Operator : YP/AJ  
 Sample : AR1242CCC500  
 Misc :  
 ALS Vial : 4 Sample Multiplier: 1

Instrument :  
 ECD\_0  
 ClientSampleId :  
 AR1242CCC500

Integration File signal 1: autoint1.e  
 Integration File signal 2: autoint2.e  
 Quant Time: Jun 23 04:15:56 2023  
 Quant Method : Z:\pestpcbsrv\HPCHEM1\ECD\_0\methods\P0062023.M  
 Quant Title : GC EXTRACTABLES  
 QLast Update : Wed Jun 21 13:08:39 2023  
 Response via : Initial Calibration  
 Integrator: ChemStation

Volume Inj. : 2 µl  
 Signal #1 Phase : ZB-MR1 Signal #2 Phase: ZB-MR2  
 Signal #1 Info : 30Mx0.32mmx 0.50µ Signal #2 Info : 30M x 0.32mm x 0.25µm

	Compound	RT#1	RT#2	Resp#1	Resp#2	ng/ml	ng/ml
42)	L9 AR-1268-2	8.800	7.621	35460	356208	0.144	2.275 #
43)	L9 AR-1268-3	9.018	7.834	493556	275207	2.172	1.975
44)	L9 AR-1268-4	9.477	0.000	37103	0	0.448	N.D. #
45)	L9 AR-1268-5	9.889	8.411	340273	307472	0.457	0.735 #

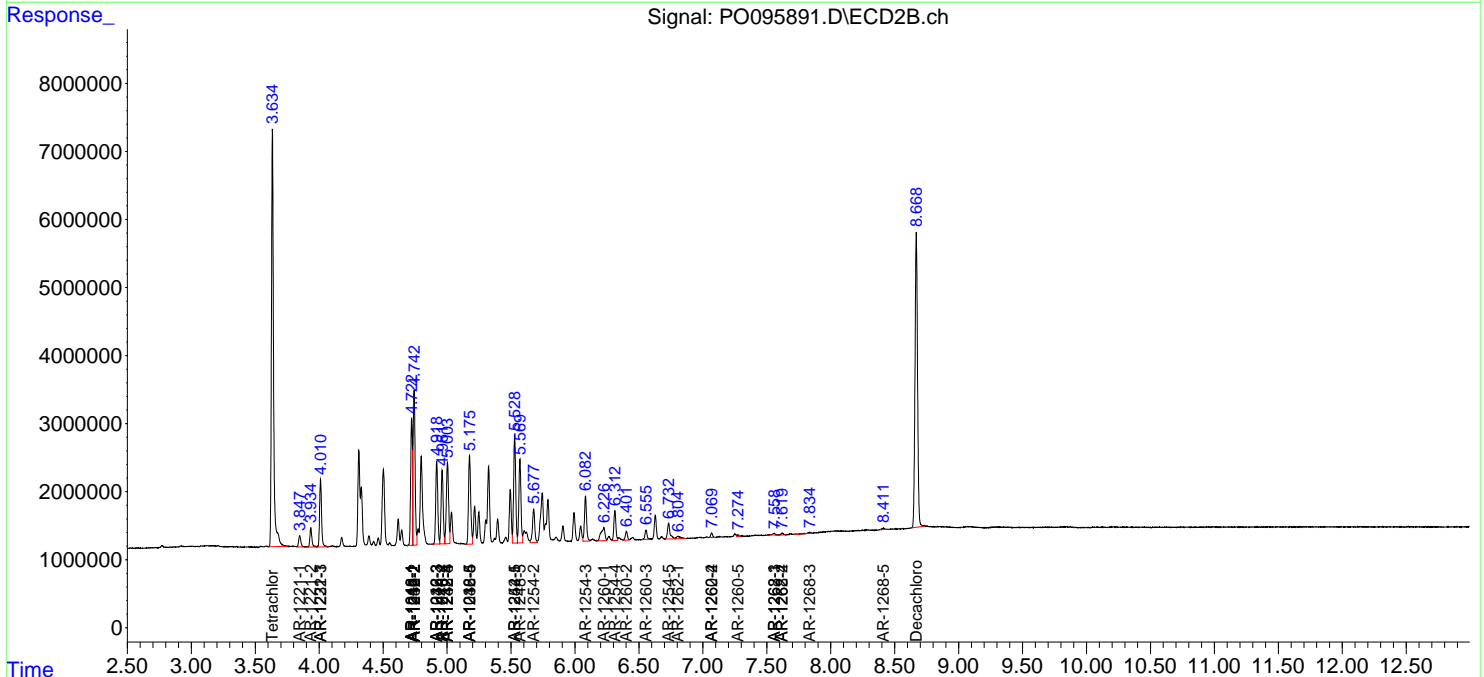
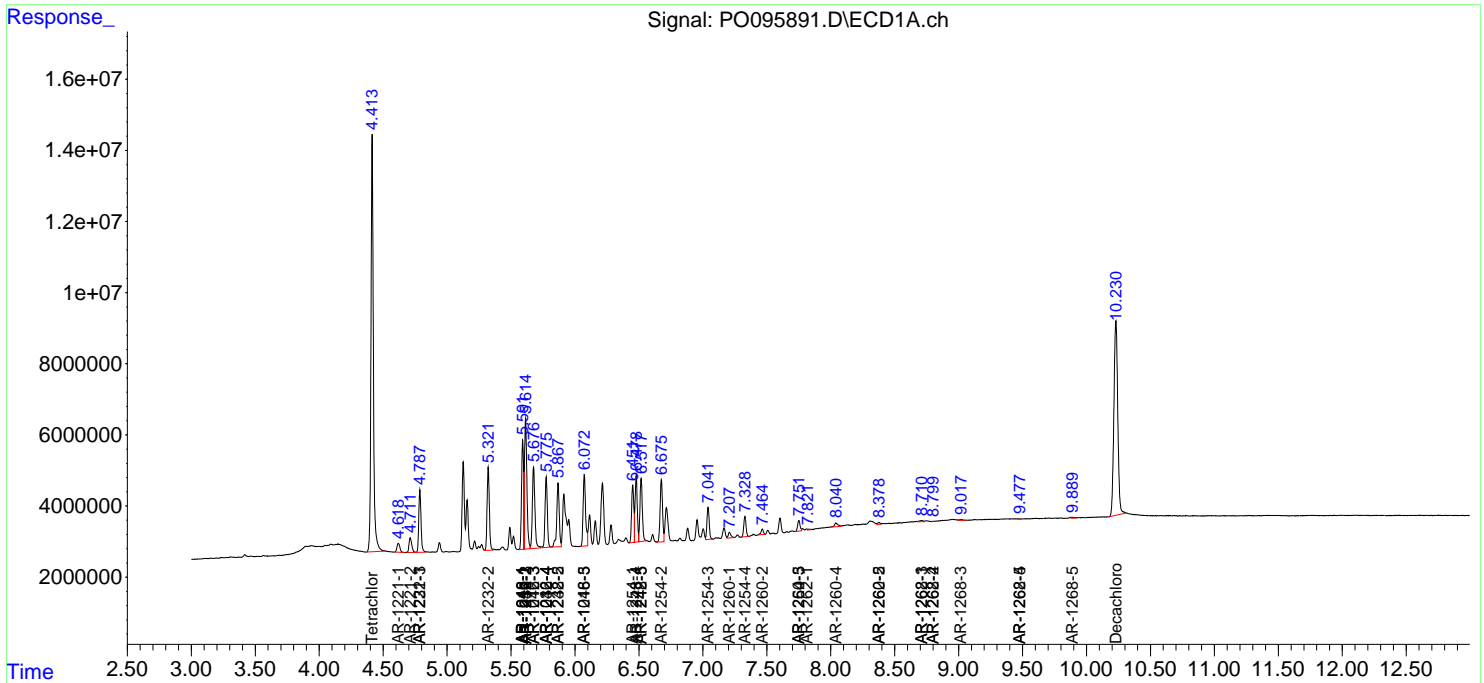
(f)=RT Delta > 1/2 Window (#)=Amounts differ by > 25% (m)=manual int.

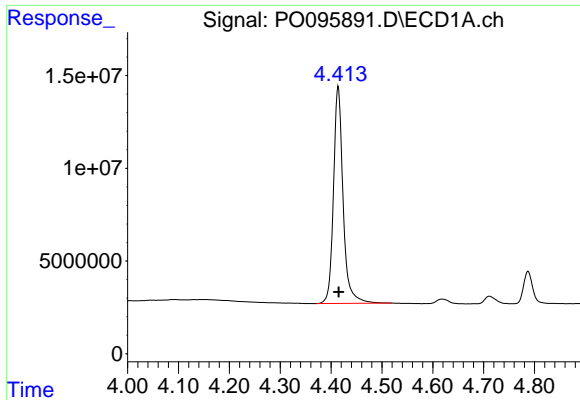
Data Path : Z:\pestpcbsrv\HPCHEM1\ECD\_O\Data\PO062223\  
 Data File : PO095891.D  
 Signal(s) : Signal #1: ECD1A.ch Signal #2: ECD2B.ch  
 Acq On : 22 Jun 2023 23:54  
 Operator : YP/AJ  
 Sample : AR1242CCC500  
 Misc :  
 ALS Vial : 4 Sample Multiplier: 1

Instrument :  
 ECD\_O  
 ClientSampleId :  
 AR1242CCC500

Integration File signal 1: autoint1.e  
 Integration File signal 2: autoint2.e  
 Quant Time: Jun 23 04:15:56 2023  
 Quant Method : Z:\pestpcbsrv\HPCHEM1\ECD\_O\methods\PO062023.M  
 Quant Title : GC EXTRACTABLES  
 QLast Update : Wed Jun 21 13:08:39 2023  
 Response via : Initial Calibration  
 Integrator: ChemStation

Volume Inj. : 2 µl  
 Signal #1 Phase : ZB-MR1 Signal #2 Phase: ZB-MR2  
 Signal #1 Info : 30Mx0.32mmx 0.50µ Signal #2 Info : 30M x 0.32mm x 0.25µm

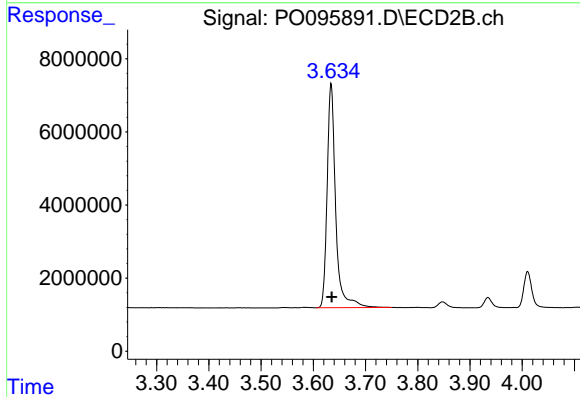




#1 Tetrachloro-m-xylene

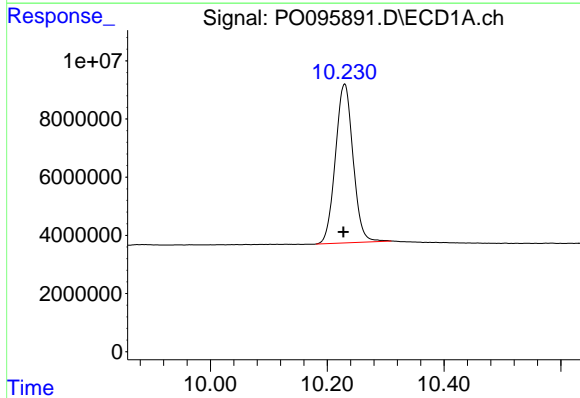
R.T.: 4.414 min  
 Delta R.T.: 0.000 min  
 Response: 153932604  
 Conc: 52.91 ng/ml

Instrument :  
 ECD\_O  
 ClientSampleId :  
 AR1242CCC500



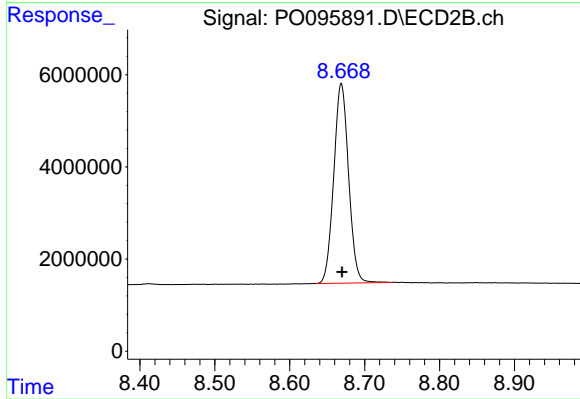
#1 Tetrachloro-m-xylene

R.T.: 3.634 min  
 Delta R.T.: -0.001 min  
 Response: 69796313  
 Conc: 51.43 ng/ml



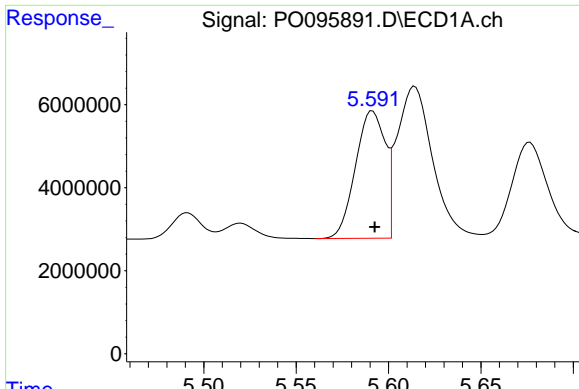
#2 Decachlorobiphenyl

R.T.: 10.230 min  
 Delta R.T.: 0.002 min  
 Response: 114575736  
 Conc: 55.30 ng/ml



#2 Decachlorobiphenyl

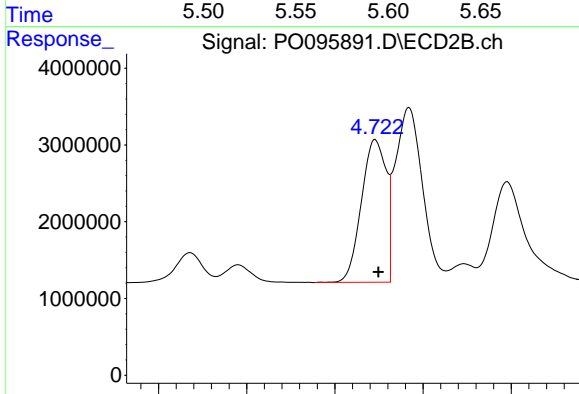
R.T.: 8.669 min  
 Delta R.T.: -0.001 min  
 Response: 59645264  
 Conc: 48.64 ng/ml



#3 AR-1016-1

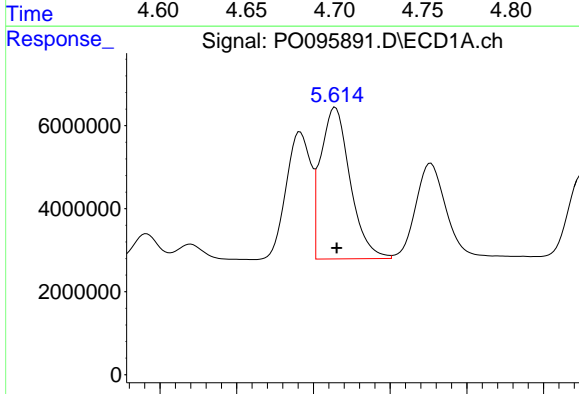
R.T.: 5.591 min  
 Delta R.T.: -0.001 min  
 Response: 34296651  
 Conc: 415.59 ng/ml

Instrument :  
 ECD\_O  
 ClientSampleId :  
 AR1242CCC500



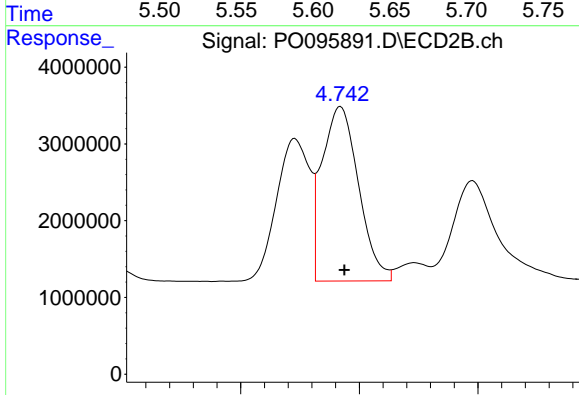
#3 AR-1016-1

R.T.: 4.723 min  
 Delta R.T.: -0.002 min  
 Response: 18055773  
 Conc: 395.09 ng/ml



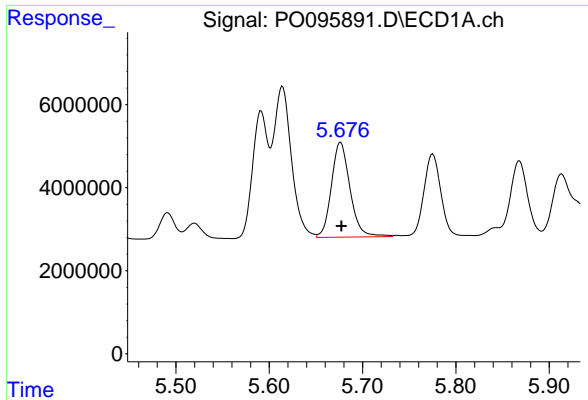
#4 AR-1016-2

R.T.: 5.614 min  
 Delta R.T.: 0.000 min  
 Response: 48782551  
 Conc: 409.41 ng/ml



#4 AR-1016-2

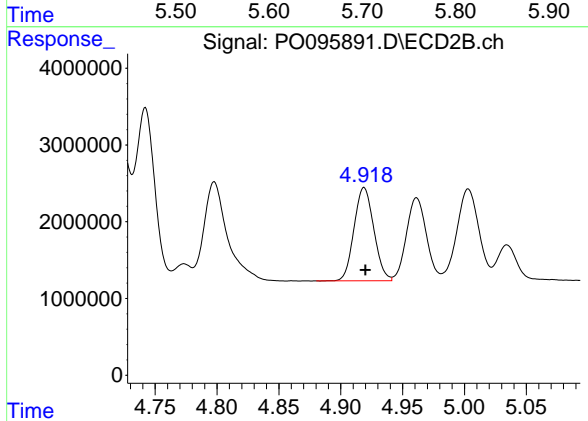
R.T.: 4.742 min  
 Delta R.T.: -0.002 min  
 Response: 24447182  
 Conc: 392.23 ng/ml



#5 AR-1016-3

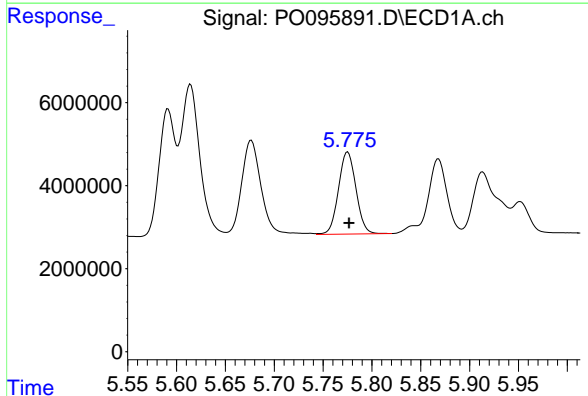
R.T.: 5.676 min  
 Delta R.T.: 0.000 min  
 Response: 31746691  
 Conc: 411.49 ng/ml

Instrument :  
 ECD\_O  
 ClientSampleId :  
 AR1242CCC500



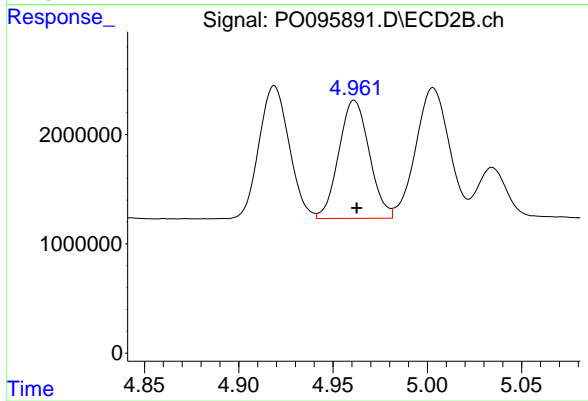
#5 AR-1016-3

R.T.: 4.919 min  
 Delta R.T.: -0.001 min  
 Response: 13508718  
 Conc: 400.97 ng/ml



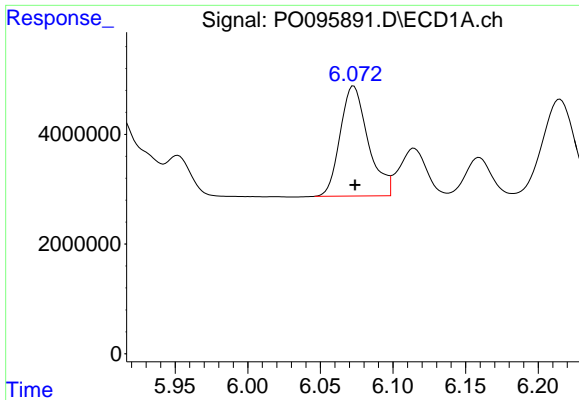
#6 AR-1016-4

R.T.: 5.775 min  
 Delta R.T.: -0.001 min  
 Response: 24641551  
 Conc: 411.14 ng/ml



#6 AR-1016-4

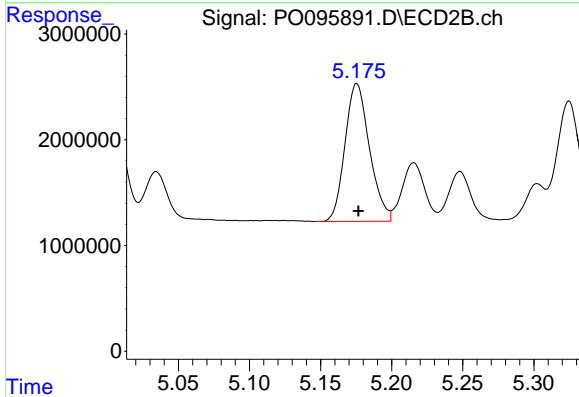
R.T.: 4.961 min  
 Delta R.T.: -0.001 min  
 Response: 12149897  
 Conc: 368.77 ng/ml



#7 AR-1016-5

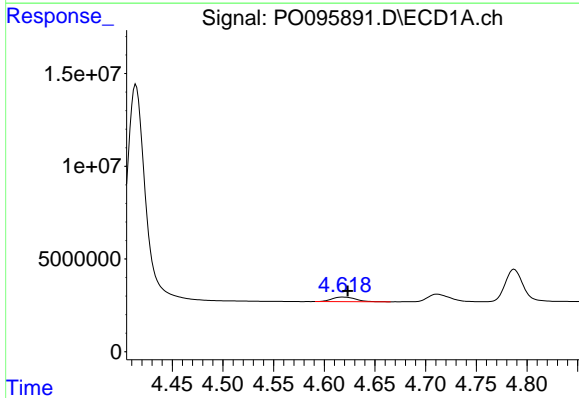
R.T.: 6.073 min  
 Delta R.T.: 0.000 min  
 Response: 26850229  
 Conc: 432.11 ng/ml

Instrument :  
 ECD\_O  
 ClientSampleId :  
 AR1242CCC500



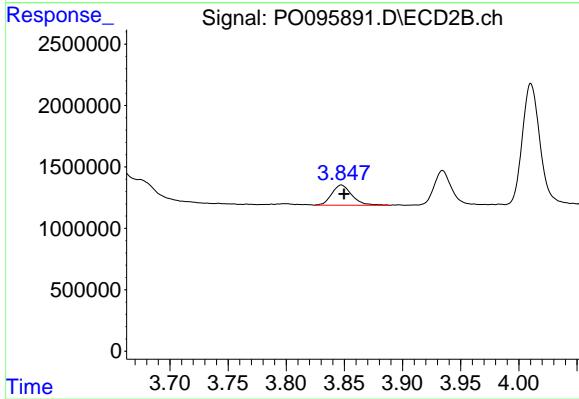
#7 AR-1016-5

R.T.: 5.176 min  
 Delta R.T.: -0.001 min  
 Response: 15650694  
 Conc: 429.45 ng/ml



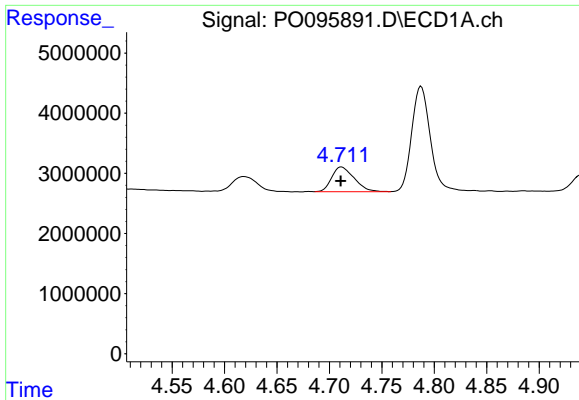
#8 AR-1221-1

R.T.: 4.619 min  
 Delta R.T.: -0.004 min  
 Response: 3927858  
 Conc: 109.82 ng/ml



#8 AR-1221-1

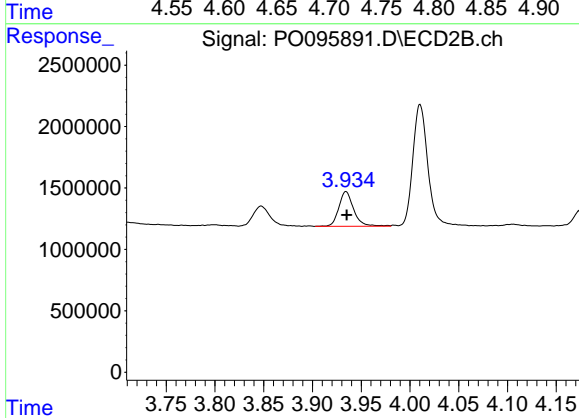
R.T.: 3.847 min  
 Delta R.T.: -0.002 min  
 Response: 1983008  
 Conc: 115.35 ng/ml



#9 AR-1221-2

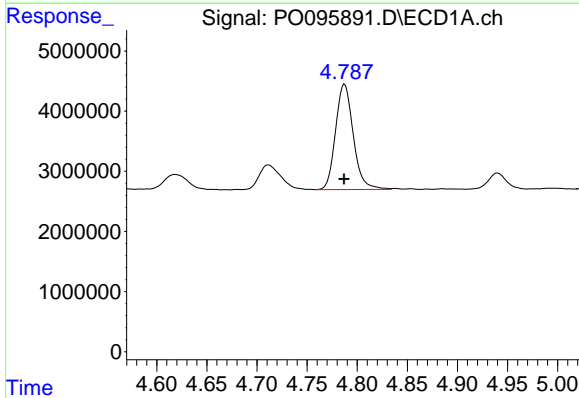
R.T.: 4.712 min  
 Delta R.T.: 0.000 min  
 Response: 6151339  
 Conc: 231.27 ng/ml

Instrument :  
 ECD\_O  
 ClientSampleId :  
 AR1242CCC500



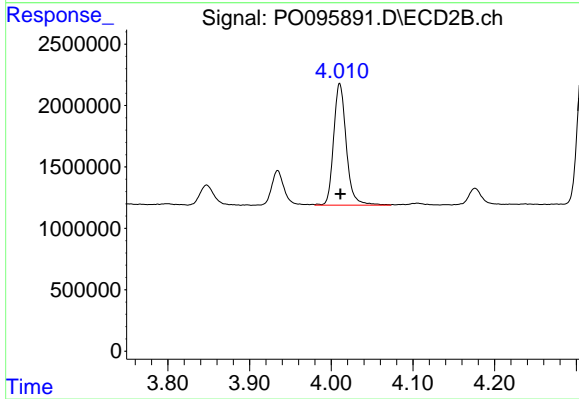
#9 AR-1221-2

R.T.: 3.934 min  
 Delta R.T.: 0.000 min  
 Response: 3019155  
 Conc: 228.93 ng/ml



#10 AR-1221-3

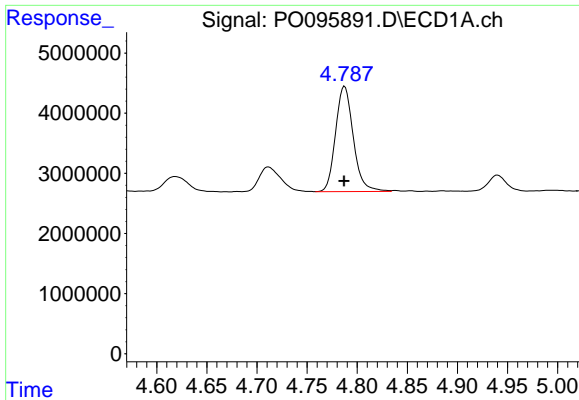
R.T.: 4.787 min  
 Delta R.T.: 0.000 min  
 Response: 21549408  
 Conc: 270.04 ng/ml



#10 AR-1221-3

R.T.: 4.010 min  
 Delta R.T.: 0.000 min  
 Response: 10694282  
 Conc: 269.69 ng/ml

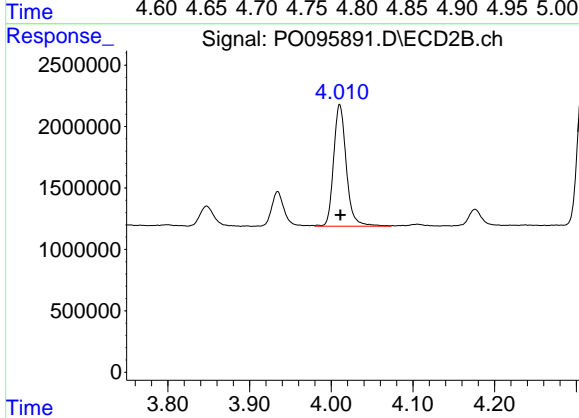




#11 AR-1232-1

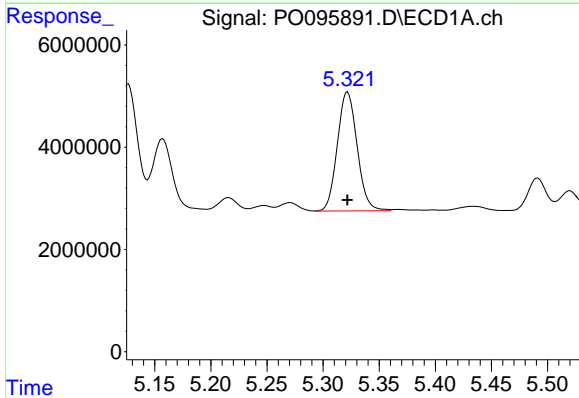
R.T.: 4.787 min  
 Delta R.T.: 0.000 min  
 Response: 21549408  
 Conc: 366.45 ng/ml

Instrument :  
 ECD\_O  
 ClientSampleId :  
 AR1242CCC500



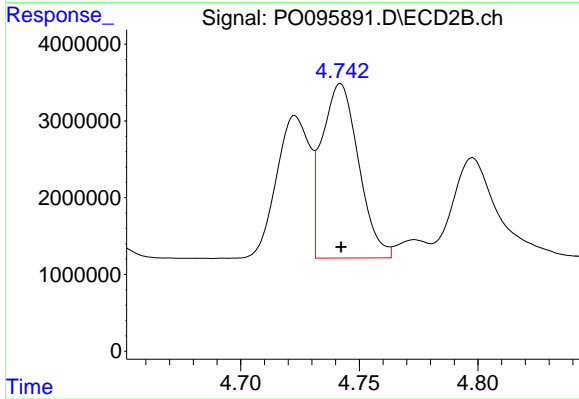
#11 AR-1232-1

R.T.: 4.010 min  
 Delta R.T.: 0.000 min  
 Response: 10694282  
 Conc: 355.71 ng/ml



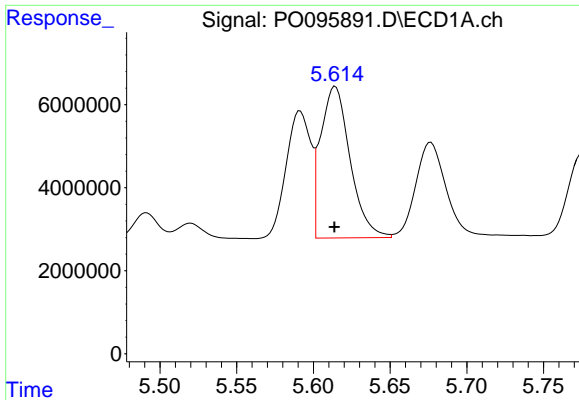
#12 AR-1232-2

R.T.: 5.322 min  
 Delta R.T.: 0.000 min  
 Response: 28578453  
 Conc: 821.60 ng/ml



#12 AR-1232-2

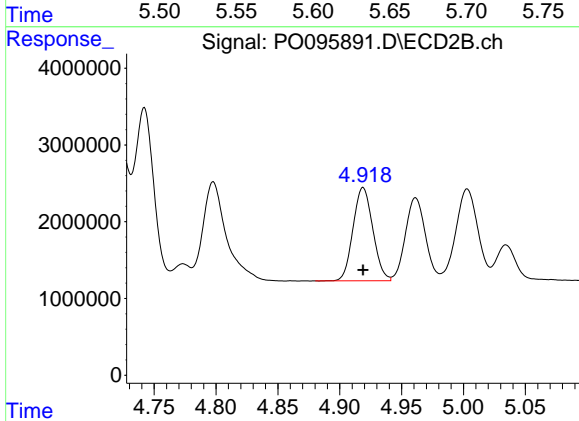
R.T.: 4.742 min  
 Delta R.T.: 0.000 min  
 Response: 24447182  
 Conc: 822.47 ng/ml



#13 AR-1232-3

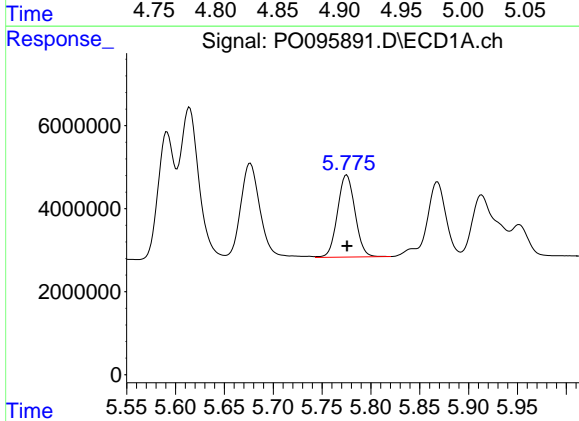
R.T.: 5.614 min  
 Delta R.T.: 0.000 min  
 Response: 48782551  
 Conc: 857.98 ng/ml

Instrument :  
 ECD\_O  
 ClientSampleId :  
 AR1242CCC500



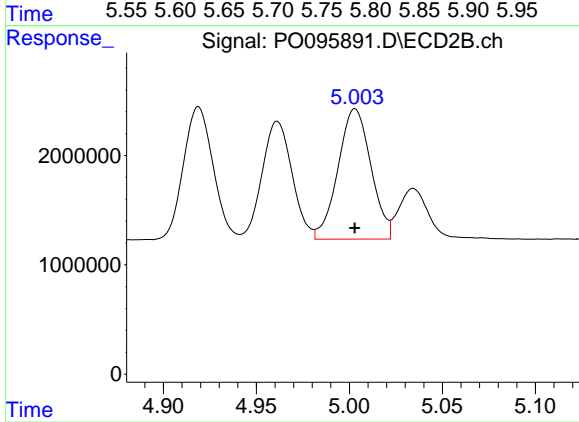
#13 AR-1232-3

R.T.: 4.919 min  
 Delta R.T.: 0.000 min  
 Response: 13508718  
 Conc: 845.74 ng/ml



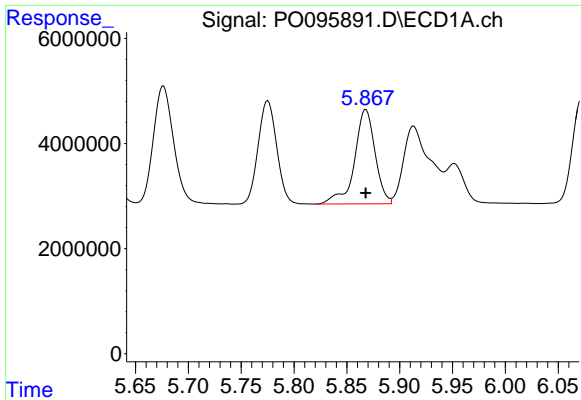
#14 AR-1232-4

R.T.: 5.775 min  
 Delta R.T.: 0.000 min  
 Response: 24641551  
 Conc: 860.69 ng/ml



#14 AR-1232-4

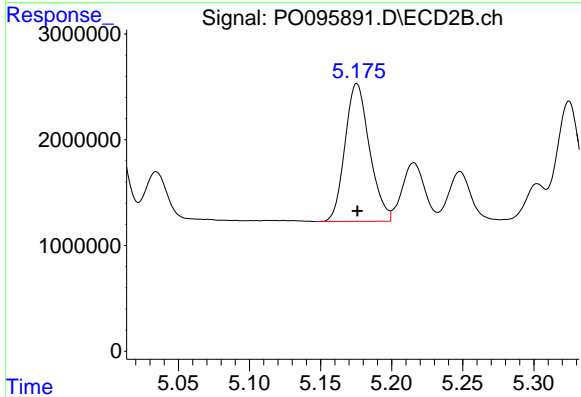
R.T.: 5.003 min  
 Delta R.T.: 0.000 min  
 Response: 14705119  
 Conc: 936.28 ng/ml



#15 AR-1232-5

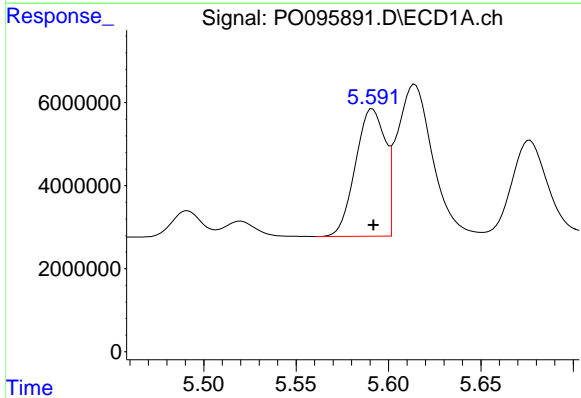
R.T.: 5.868 min  
 Delta R.T.: 0.000 min  
 Response: 24360753  
 Conc: 980.80 ng/ml

Instrument :  
 ECD\_O  
 ClientSampleId :  
 AR1242CCC500



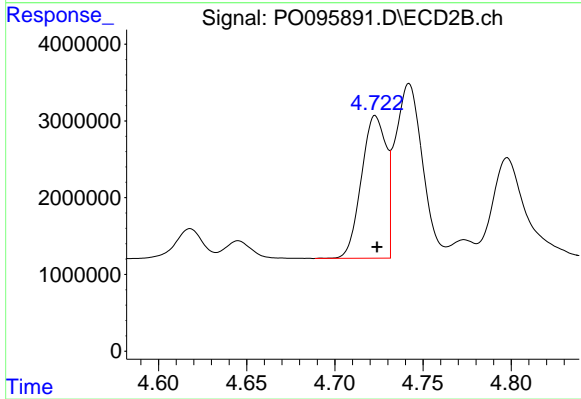
#15 AR-1232-5

R.T.: 5.176 min  
 Delta R.T.: 0.000 min  
 Response: 15650694  
 Conc: 869.72 ng/ml



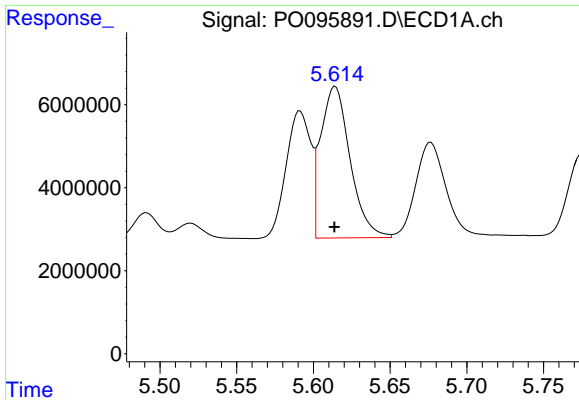
#16 AR-1242-1

R.T.: 5.591 min  
 Delta R.T.: 0.000 min  
 Response: 34296651  
 Conc: 518.86 ng/ml



#16 AR-1242-1

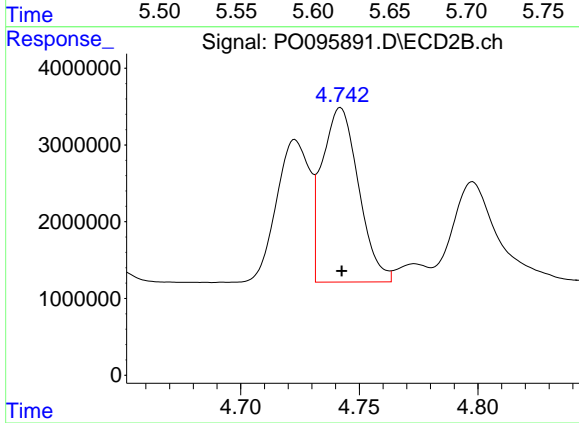
R.T.: 4.723 min  
 Delta R.T.: -0.001 min  
 Response: 18055773  
 Conc: 499.44 ng/ml



#17 AR-1242-2

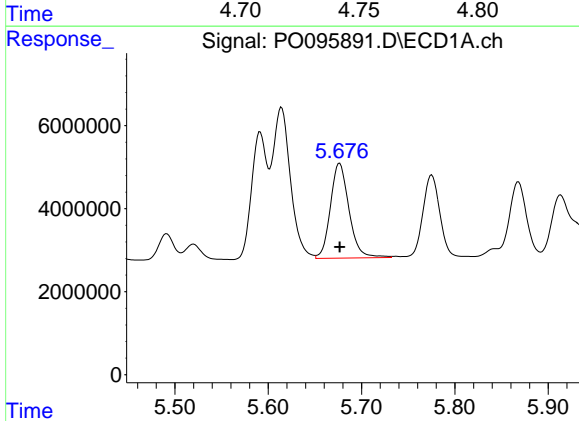
R.T.: 5.614 min  
 Delta R.T.: 0.000 min  
 Response: 48782551  
 Conc: 511.62 ng/ml

Instrument :  
 ECD\_O  
 ClientSampleId :  
 AR1242CCC500



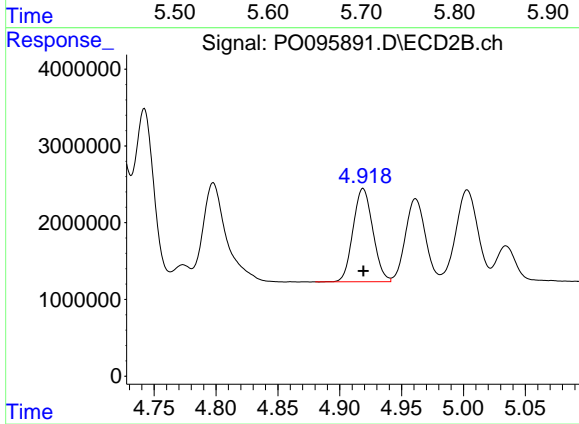
#17 AR-1242-2

R.T.: 4.742 min  
 Delta R.T.: 0.000 min  
 Response: 24447182  
 Conc: 498.34 ng/ml



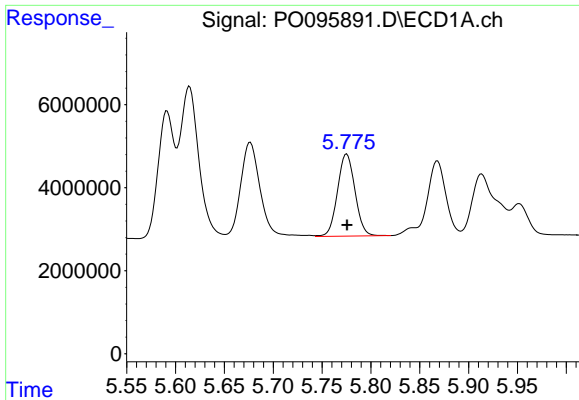
#18 AR-1242-3

R.T.: 5.676 min  
 Delta R.T.: 0.000 min  
 Response: 31746691  
 Conc: 500.38 ng/ml



#18 AR-1242-3

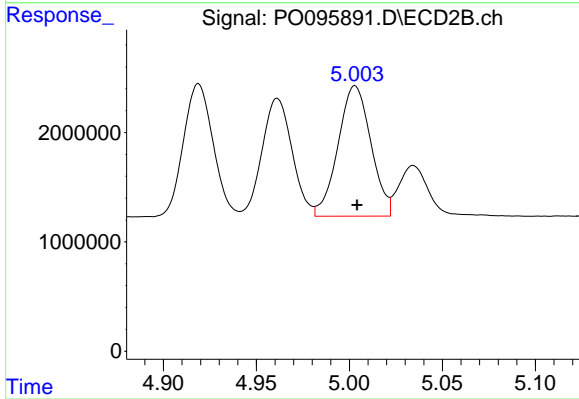
R.T.: 4.919 min  
 Delta R.T.: 0.000 min  
 Response: 13508718  
 Conc: 503.78 ng/ml



#19 AR-1242-4

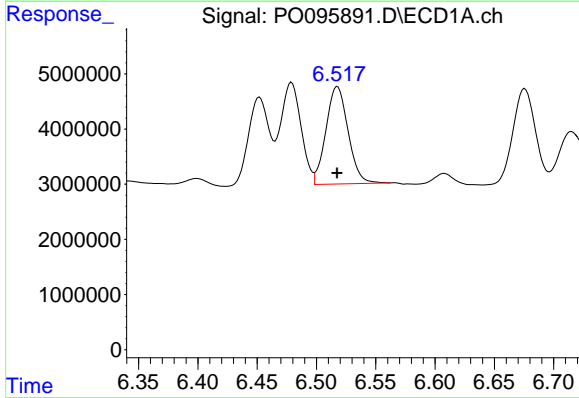
R.T.: 5.775 min  
 Delta R.T.: 0.000 min  
 Response: 24641551  
 Conc: 503.55 ng/ml

Instrument :  
 ECD\_O  
 ClientSampleId :  
 AR1242CCC500



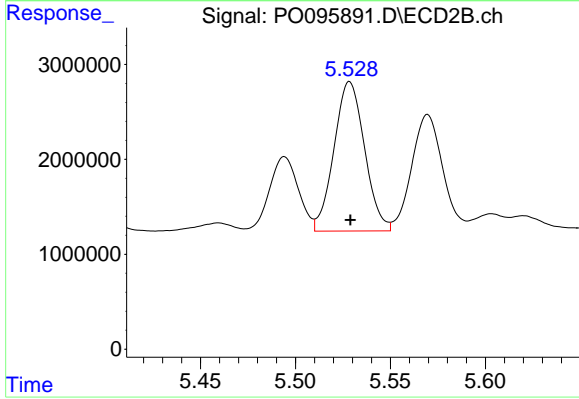
#19 AR-1242-4

R.T.: 5.003 min  
 Delta R.T.: -0.001 min  
 Response: 14705119  
 Conc: 497.38 ng/ml



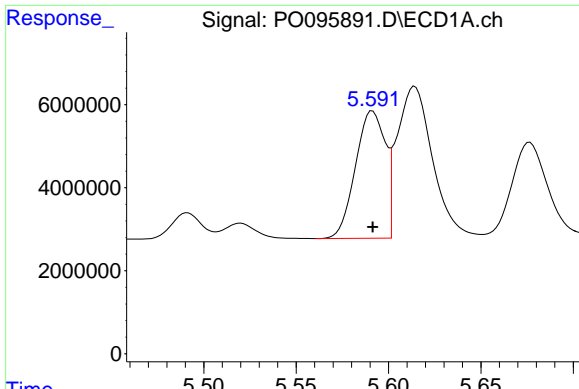
#20 AR-1242-5

R.T.: 6.518 min  
 Delta R.T.: 0.000 min  
 Response: 22957033  
 Conc: 464.29 ng/ml



#20 AR-1242-5

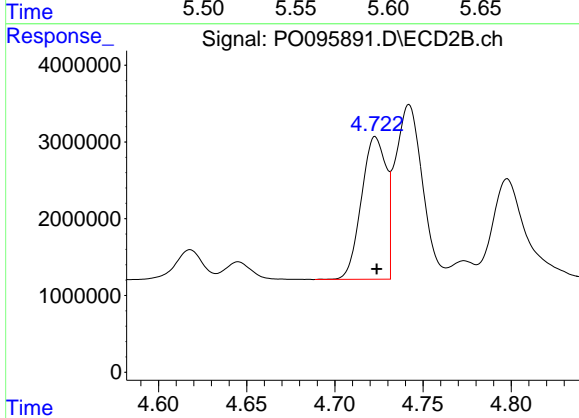
R.T.: 5.529 min  
 Delta R.T.: 0.000 min  
 Response: 17668548  
 Conc: 497.70 ng/ml



#21 AR-1248-1

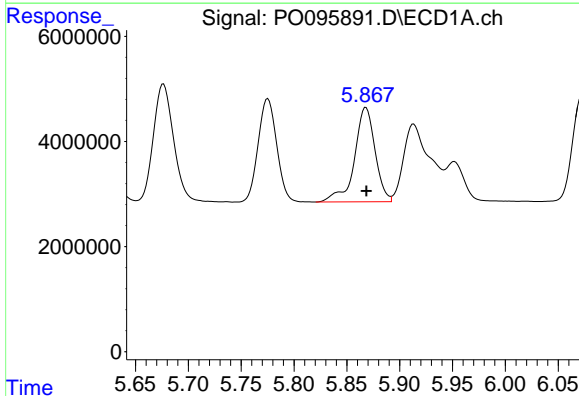
R.T.: 5.591 min  
 Delta R.T.: 0.000 min  
 Response: 34296651  
 Conc: 677.52 ng/ml

Instrument :  
 ECD\_O  
 ClientSampleId :  
 AR1242CCC500



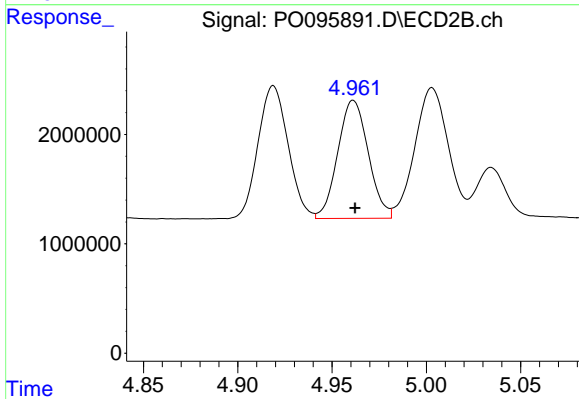
#21 AR-1248-1

R.T.: 4.723 min  
 Delta R.T.: 0.000 min  
 Response: 18055773  
 Conc: 665.74 ng/ml



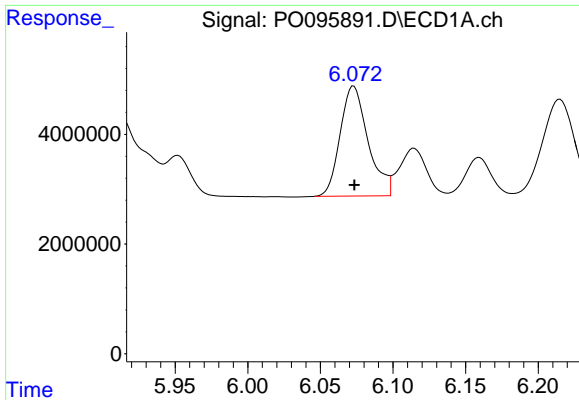
#22 AR-1248-2

R.T.: 5.868 min  
 Delta R.T.: 0.000 min  
 Response: 24360753  
 Conc: 295.87 ng/ml



#22 AR-1248-2

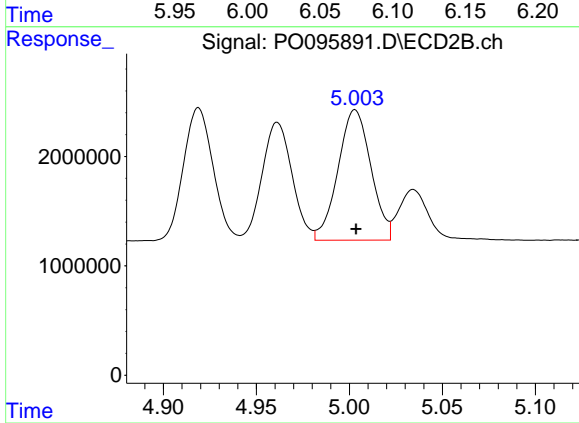
R.T.: 4.961 min  
 Delta R.T.: 0.000 min  
 Response: 12149897  
 Conc: 303.85 ng/ml



#23 AR-1248-3

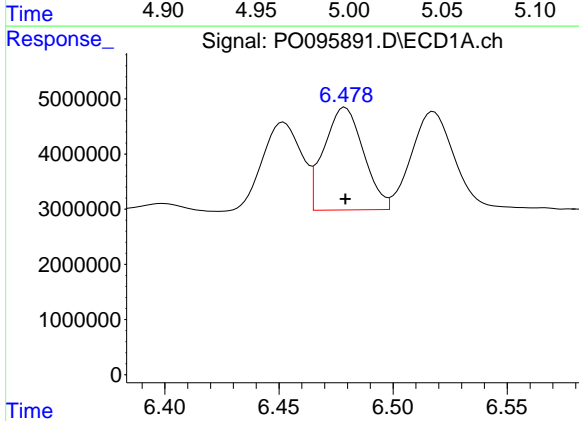
R.T.: 6.073 min  
 Delta R.T.: 0.000 min  
 Response: 26850229  
 Conc: 311.95 ng/ml

Instrument :  
 ECD\_O  
 ClientSampleId :  
 AR1242CCC500



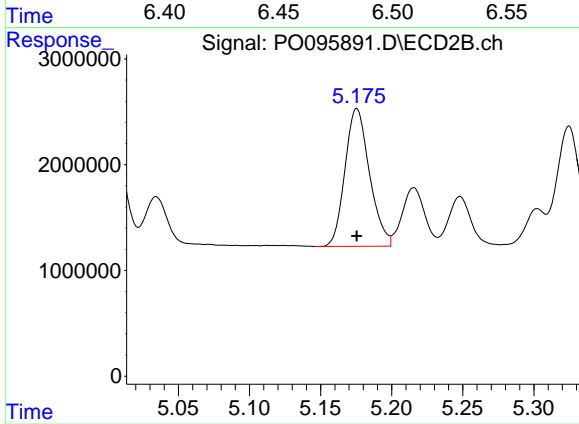
#23 AR-1248-3

R.T.: 5.003 min  
 Delta R.T.: 0.000 min  
 Response: 14705119  
 Conc: 341.77 ng/ml



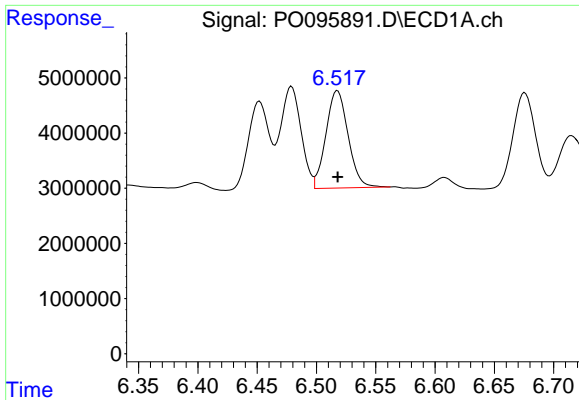
#24 AR-1248-4

R.T.: 6.479 min  
 Delta R.T.: 0.000 min  
 Response: 22440001  
 Conc: 270.00 ng/ml



#24 AR-1248-4

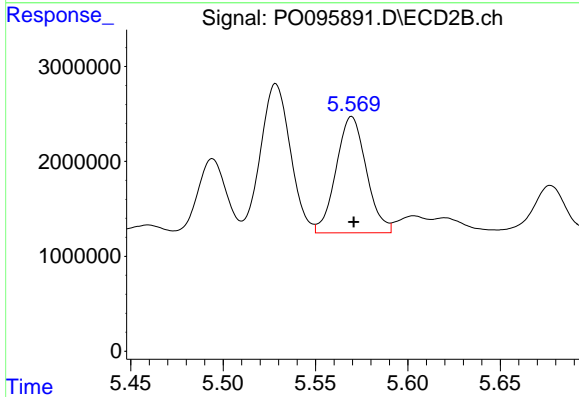
R.T.: 5.176 min  
 Delta R.T.: 0.000 min  
 Response: 15650694  
 Conc: 300.90 ng/ml



#25 AR-1248-5

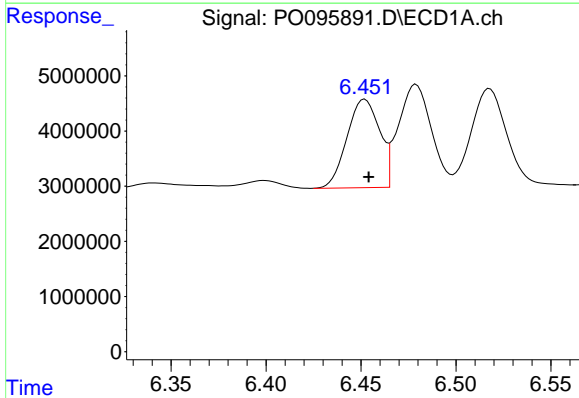
R.T.: 6.518 min  
 Delta R.T.: 0.000 min  
 Response: 22957033  
 Conc: 273.11 ng/ml

Instrument :  
 ECD\_O  
 ClientSampleId :  
 AR1242CCC500



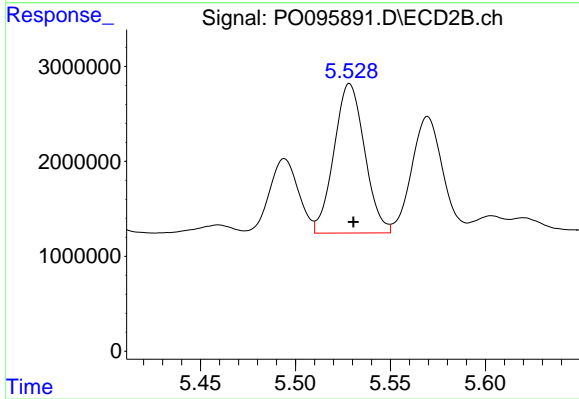
#25 AR-1248-5

R.T.: 5.570 min  
 Delta R.T.: -0.001 min  
 Response: 13967857  
 Conc: 278.43 ng/ml



#26 AR-1254-1

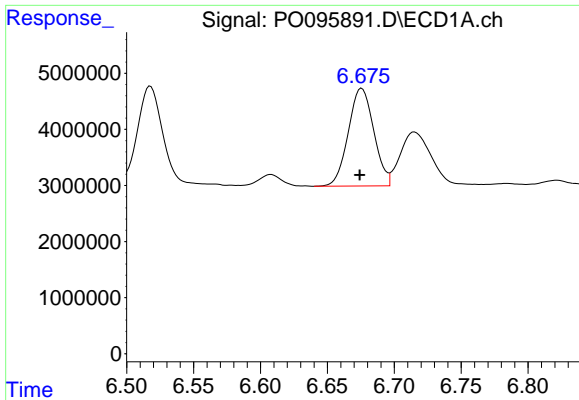
R.T.: 6.452 min  
 Delta R.T.: -0.002 min  
 Response: 19197564  
 Conc: 201.62 ng/ml



#26 AR-1254-1

R.T.: 5.529 min  
 Delta R.T.: -0.002 min  
 Response: 17668548  
 Conc: 238.56 ng/ml

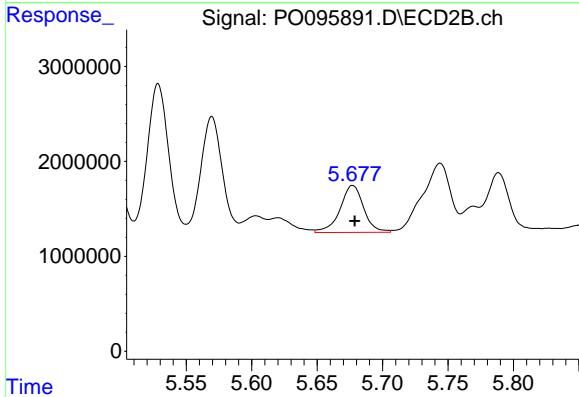




#27 AR-1254-2

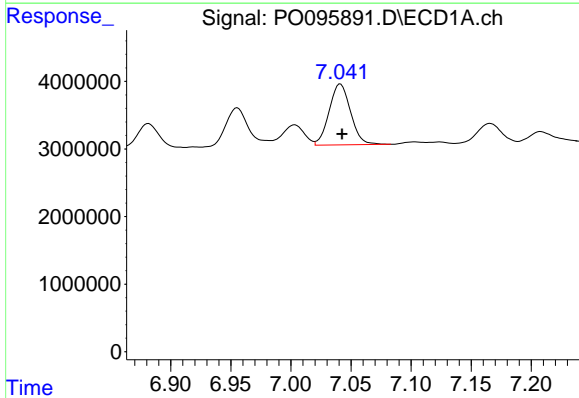
R.T.: 6.676 min  
 Delta R.T.: 0.002 min  
 Response: 23110445  
 Conc: 166.41 ng/ml

Instrument :  
 ECD\_O  
 ClientSampleId :  
 AR1242CCC500



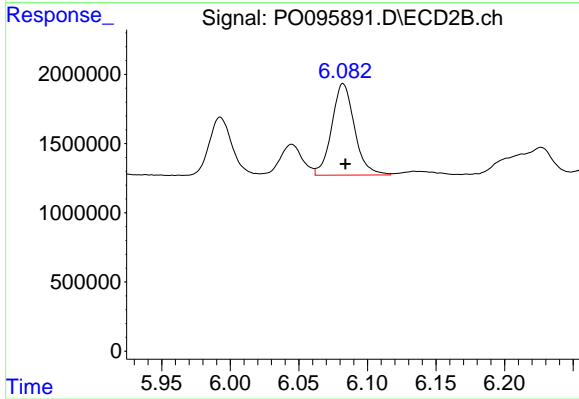
#27 AR-1254-2

R.T.: 5.677 min  
 Delta R.T.: -0.002 min  
 Response: 6222170  
 Conc: 91.18 ng/ml



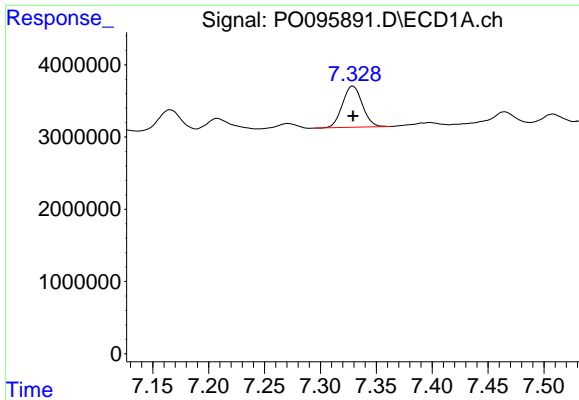
#28 AR-1254-3

R.T.: 7.041 min  
 Delta R.T.: -0.001 min  
 Response: 11211462  
 Conc: 82.99 ng/ml



#28 AR-1254-3

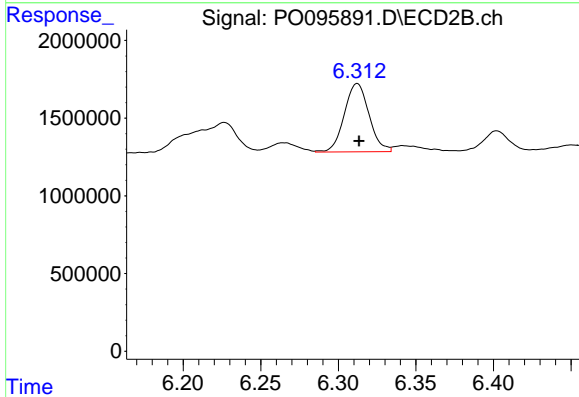
R.T.: 6.082 min  
 Delta R.T.: -0.002 min  
 Response: 7645946  
 Conc: 76.78 ng/ml



#29 AR-1254-4

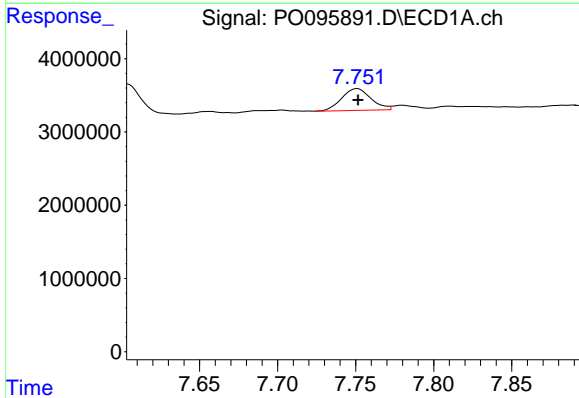
R.T.: 7.329 min  
 Delta R.T.: 0.000 min  
 Response: 7061574  
 Conc: 78.75 ng/ml

Instrument :  
 ECD\_O  
 ClientSampleId :  
 AR1242CCC500



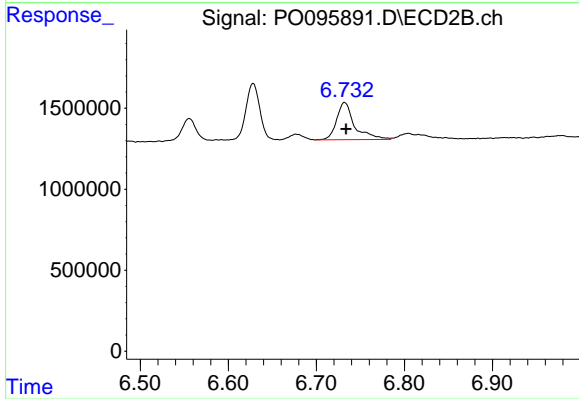
#29 AR-1254-4

R.T.: 6.312 min  
 Delta R.T.: -0.001 min  
 Response: 4874493  
 Conc: 82.59 ng/ml



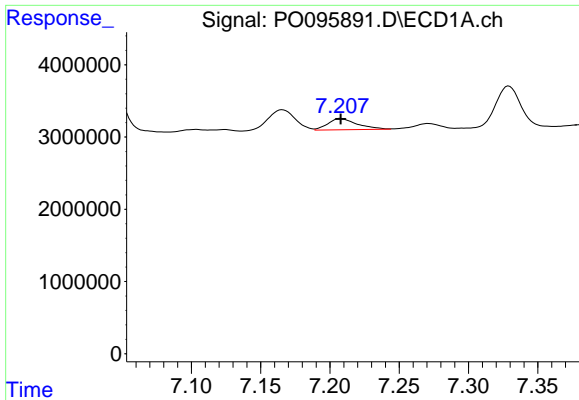
#30 AR-1254-5

R.T.: 7.751 min  
 Delta R.T.: 0.000 min  
 Response: 3904833  
 Conc: 37.96 ng/ml



#30 AR-1254-5

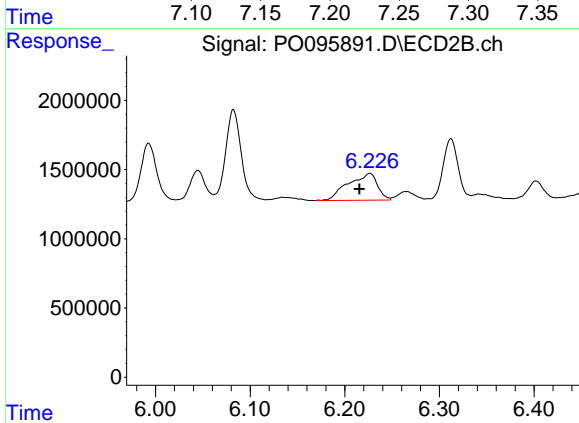
R.T.: 6.732 min  
 Delta R.T.: -0.001 min  
 Response: 3267803  
 Conc: 36.65 ng/ml



#31 AR-1260-1

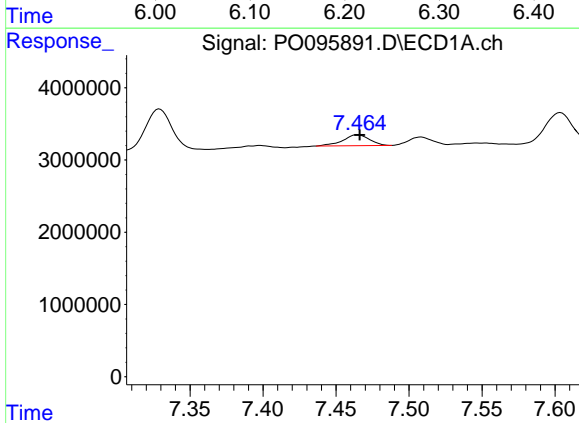
R.T.: 7.208 min  
 Delta R.T.: 0.000 min  
 Response: 2295259  
 Conc: 20.19 ng/ml

Instrument :  
 ECD\_O  
 ClientSampleId :  
 AR1242CCC500



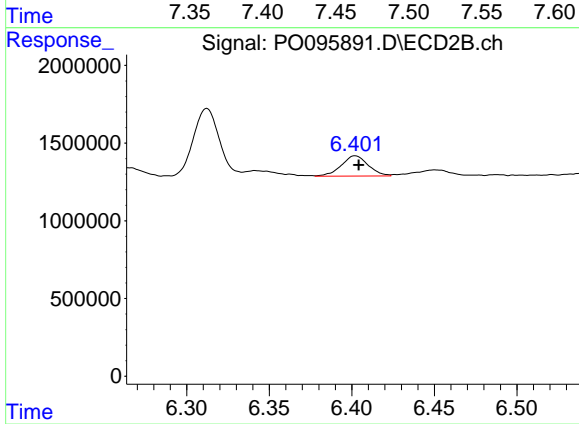
#31 AR-1260-1

R.T.: 6.227 min  
 Delta R.T.: 0.011 min  
 Response: 4177626  
 Conc: 58.21 ng/ml



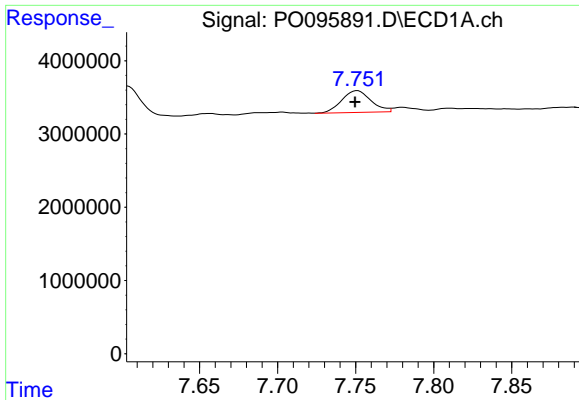
#32 AR-1260-2

R.T.: 7.465 min  
 Delta R.T.: -0.001 min  
 Response: 1913674  
 Conc: 15.76 ng/ml



#32 AR-1260-2

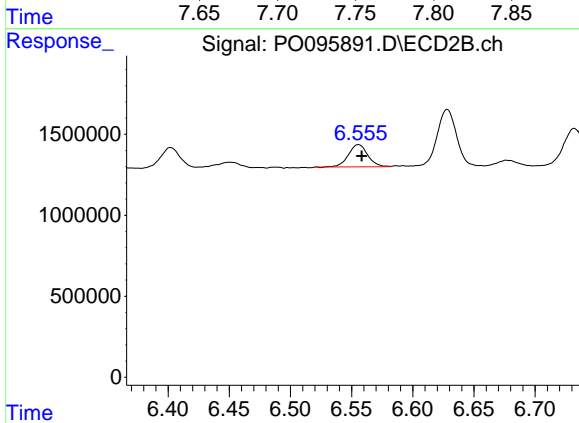
R.T.: 6.402 min  
 Delta R.T.: -0.002 min  
 Response: 1495479  
 Conc: 17.95 ng/ml



#33 AR-1260-3

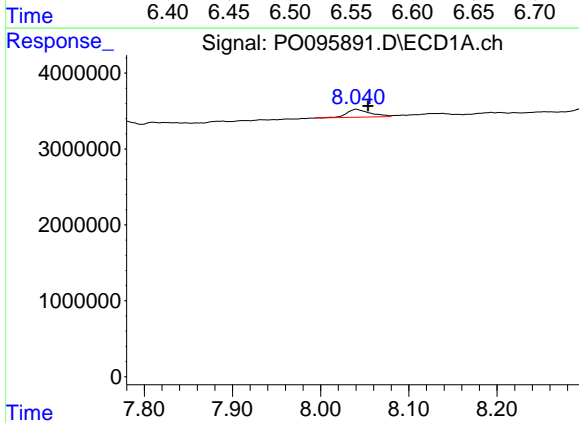
R.T.: 7.751 min  
 Delta R.T.: 0.001 min  
 Response: 3904833  
 Conc: 28.17 ng/ml

Instrument :  
 ECD\_O  
 ClientSampleId :  
 AR1242CCC500



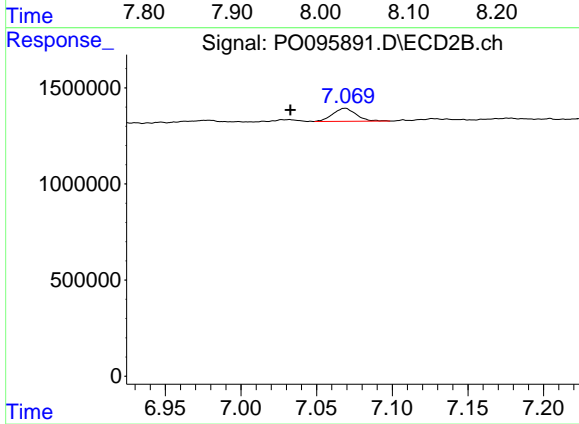
#33 AR-1260-3

R.T.: 6.556 min  
 Delta R.T.: -0.003 min  
 Response: 1514296  
 Conc: 19.66 ng/ml



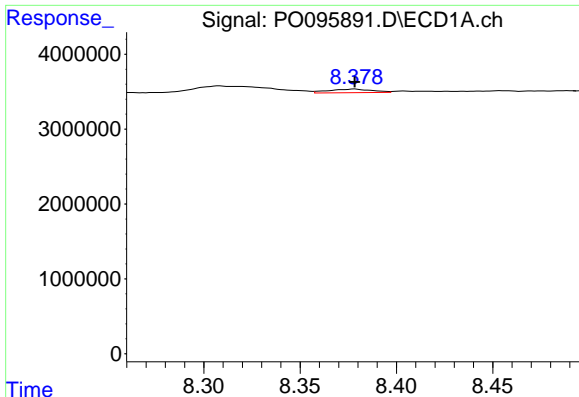
#34 AR-1260-4

R.T.: 8.040 min  
 Delta R.T.: -0.014 min  
 Response: 1944264  
 Conc: 20.33 ng/ml



#34 AR-1260-4

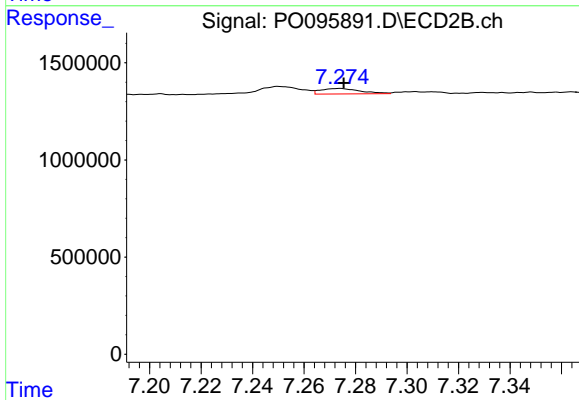
R.T.: 7.069 min  
 Delta R.T.: 0.036 min  
 Response: 729466  
 Conc: 12.79 ng/ml



#35 AR-1260-5

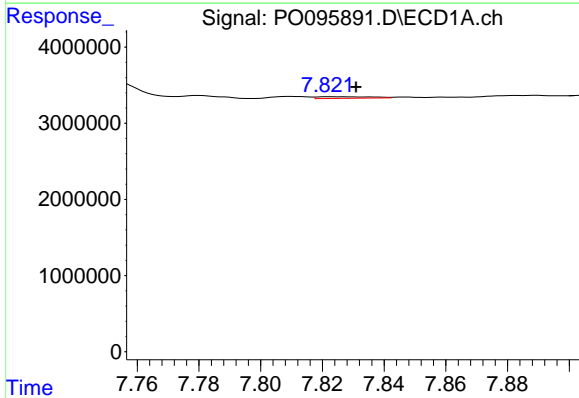
R.T.: 8.378 min  
 Delta R.T.: 0.000 min  
 Response: 751215  
 Conc: 4.50 ng/ml

Instrument :  
 ECD\_O  
 ClientSampleId :  
 AR1242CCC500



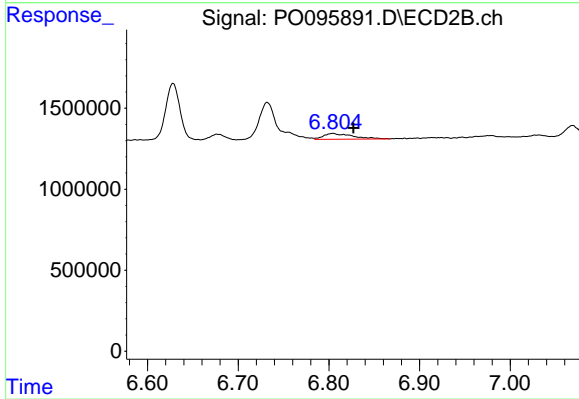
#35 AR-1260-5

R.T.: 7.274 min  
 Delta R.T.: -0.002 min  
 Response: 299044  
 Conc: 2.33 ng/ml



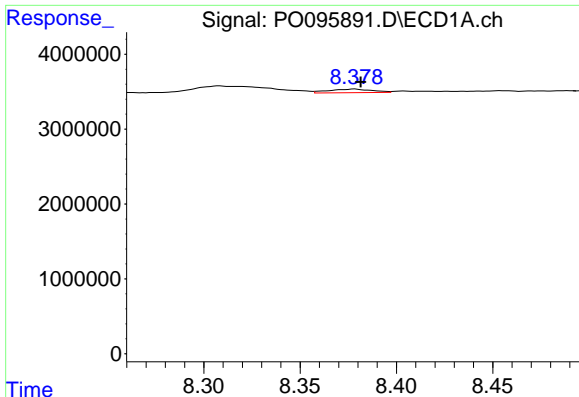
#36 AR-1262-1

R.T.: 7.822 min  
 Delta R.T.: -0.008 min  
 Response: 259968  
 Conc: 1.94 ng/ml



#36 AR-1262-1

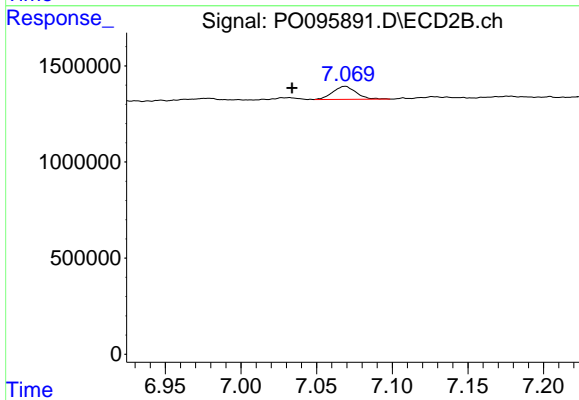
R.T.: 6.805 min  
 Delta R.T.: -0.023 min  
 Response: 786642  
 Conc: 20.57 ng/ml



#37 AR-1262-2

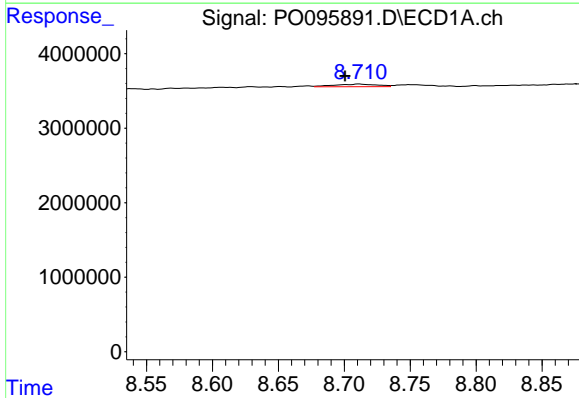
R.T.: 8.378 min  
 Delta R.T.: -0.003 min  
 Response: 751215  
 Conc: 3.63 ng/ml

Instrument :  
 ECD\_O  
 ClientSampleId :  
 AR1242CCC500



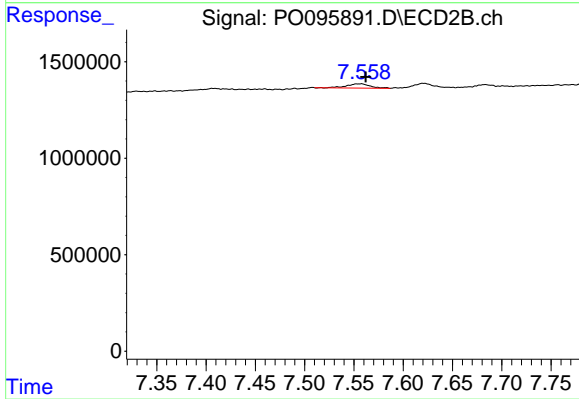
#37 AR-1262-2

R.T.: 7.069 min  
 Delta R.T.: 0.035 min  
 Response: 729466  
 Conc: 9.25 ng/ml



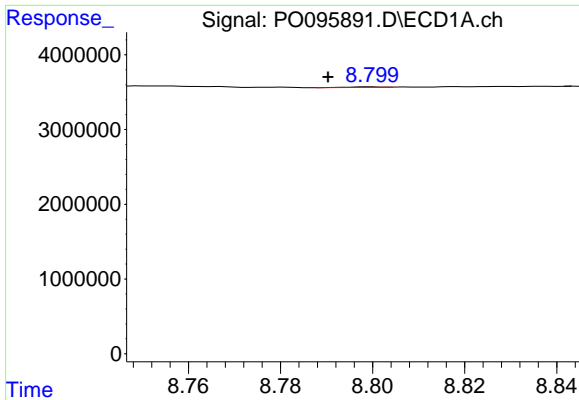
#38 AR-1262-3

R.T.: 8.711 min  
 Delta R.T.: 0.010 min  
 Response: 792476  
 Conc: 5.24 ng/ml



#38 AR-1262-3

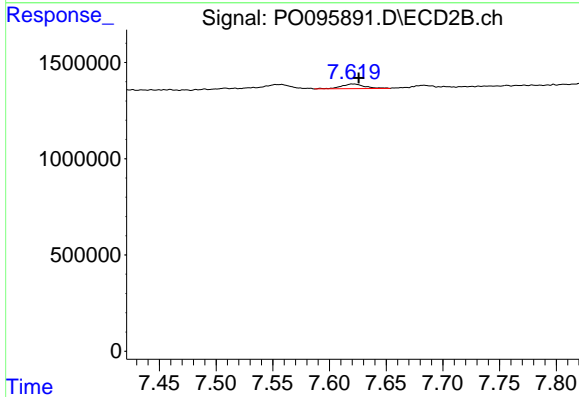
R.T.: 7.557 min  
 Delta R.T.: -0.004 min  
 Response: 358328  
 Conc: 5.78 ng/ml



#39 AR-1262-4

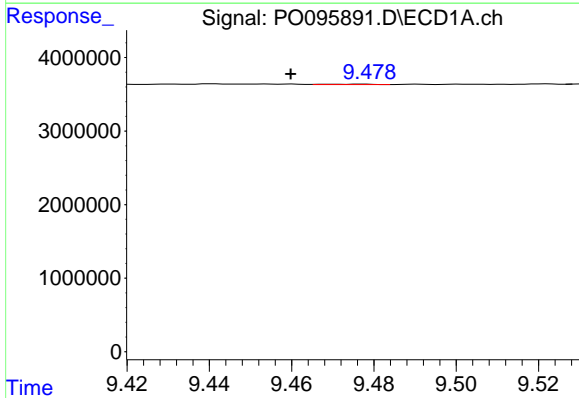
R.T.: 8.800 min  
 Delta R.T.: 0.009 min  
 Response: 35460  
 Conc: 0.29 ng/ml

Instrument :  
 ECD\_O  
 ClientSampleId :  
 AR1242CCC500



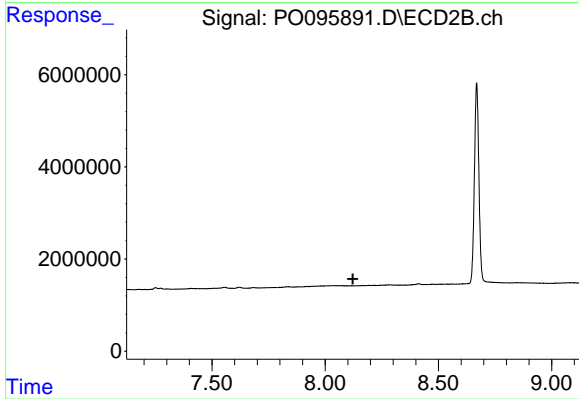
#39 AR-1262-4

R.T.: 7.621 min  
 Delta R.T.: -0.005 min  
 Response: 356208  
 Conc: 3.28 ng/ml



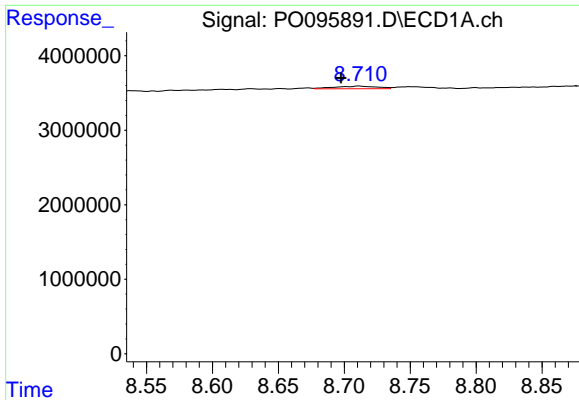
#40 AR-1262-5

R.T.: 9.477 min  
 Delta R.T.: 0.017 min  
 Response: 37103  
 Conc: 0.49 ng/ml



#40 AR-1262-5

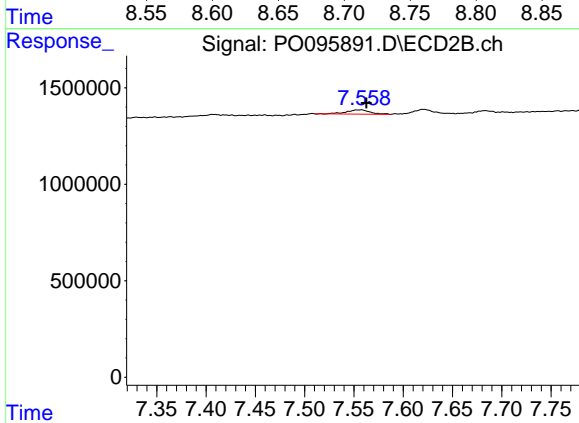
R.T.: 0.000 min  
 Exp R.T.: 8.123 min  
 Response: 0  
 Conc: N.D.



#41 AR-1268-1

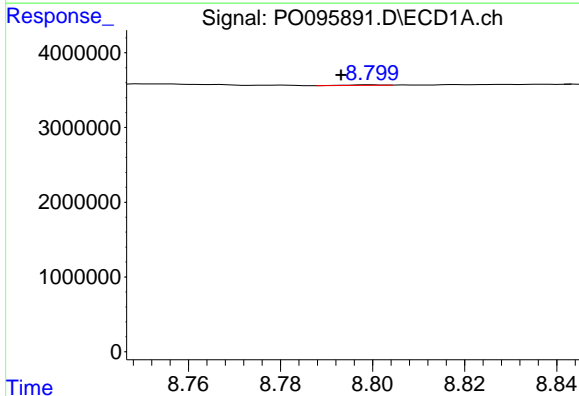
R.T.: 8.711 min  
 Delta R.T.: 0.013 min  
 Response: 792476  
 Conc: 2.90 ng/ml

Instrument :  
 ECD\_O  
 ClientSampleId :  
 AR1242CCC500



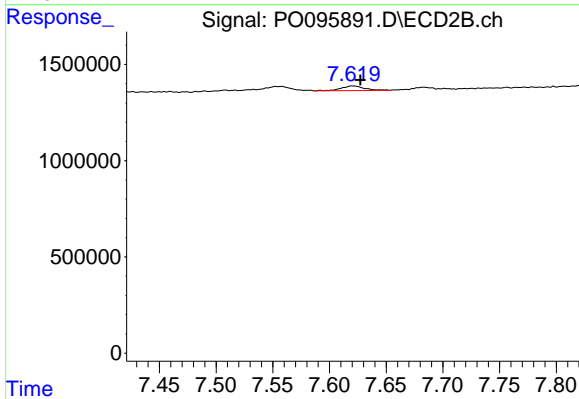
#41 AR-1268-1

R.T.: 7.557 min  
 Delta R.T.: -0.005 min  
 Response: 358328  
 Conc: 2.03 ng/ml



#42 AR-1268-2

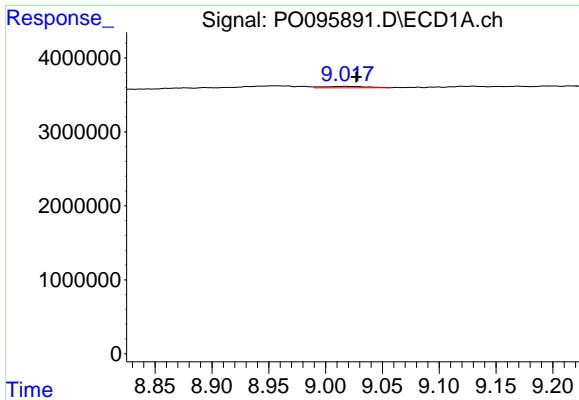
R.T.: 8.800 min  
 Delta R.T.: 0.006 min  
 Response: 35460  
 Conc: 0.14 ng/ml



#42 AR-1268-2

R.T.: 7.621 min  
 Delta R.T.: -0.007 min  
 Response: 356208  
 Conc: 2.27 ng/ml

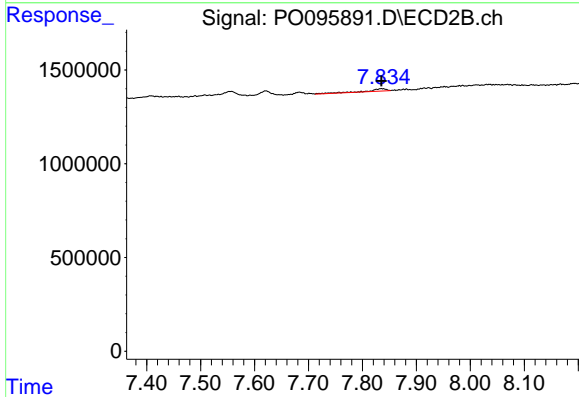




#43 AR-1268-3

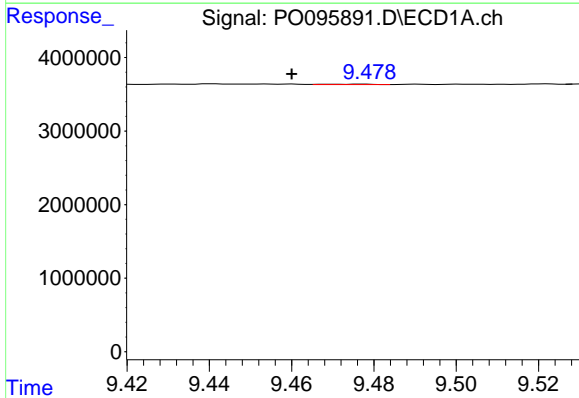
R.T.: 9.018 min  
 Delta R.T.: -0.009 min  
 Response: 493556  
 Conc: 2.17 ng/ml

Instrument :  
 ECD\_O  
 ClientSampleId :  
 AR1242CCC500



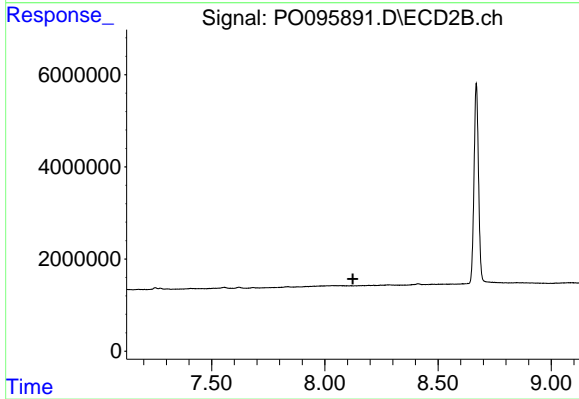
#43 AR-1268-3

R.T.: 7.834 min  
 Delta R.T.: 0.000 min  
 Response: 275207  
 Conc: 1.97 ng/ml



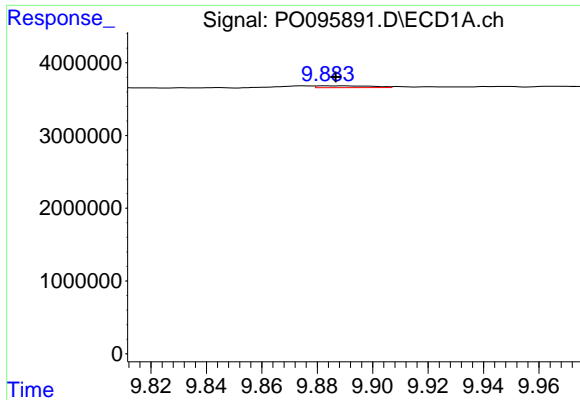
#44 AR-1268-4

R.T.: 9.477 min  
 Delta R.T.: 0.017 min  
 Response: 37103  
 Conc: 0.45 ng/ml



#44 AR-1268-4

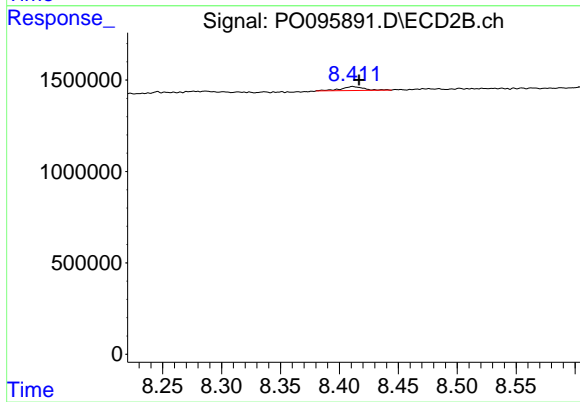
R.T.: 0.000 min  
 Exp R.T.: 8.124 min  
 Response: 0  
 Conc: N.D.



#45 AR-1268-5

R.T.: 9.889 min  
 Delta R.T.: 0.002 min  
 Response: 340273  
 Conc: 0.46 ng/ml

Instrument :  
 ECD\_O  
 ClientSampleId :  
 AR1242CCC500



#45 AR-1268-5

R.T.: 8.411 min  
 Delta R.T.: -0.005 min  
 Response: 307472  
 Conc: 0.73 ng/ml