

Data Path : Z:\pestpcbsrv\HPCHEM1\ECD_0\Data\P0062223\
 Data File : P0095883.D
 Signal(s) : Signal #1: ECD1A.ch Signal #2: ECD2B.ch
 Acq On : 22 Jun 2023 20:41
 Operator : YP/AJ
 Sample : 03336-04
 Misc :
 ALS Vial : 25 Sample Multiplier: 1

Instrument :
 ECD_0
 ClientSampleId :
 WC-5

Integration File signal 1: autoint1.e
 Integration File signal 2: autoint2.e
 Quant Time: Jun 22 22:39:40 2023
 Quant Method : Z:\pestpcbsrv\HPCHEM1\ECD_0\methods\P0062023.M
 Quant Title : GC EXTRACTABLES
 QLast Update : Wed Jun 21 13:08:39 2023
 Response via : Initial Calibration
 Integrator: ChemStation

Volume Inj. : 2 µl
 Signal #1 Phase : ZB-MR1 Signal #2 Phase: ZB-MR2
 Signal #1 Info : 30Mx0.32mmx 0.50µ Signal #2 Info : 30M x 0.32mm x 0.25µm

Compound	RT#1	RT#2	Resp#1	Resp#2	ng/ml	ng/ml

System Monitoring Compounds						
1) SA Tetrachlo...	4.414	3.634	66541253	29318376	22.870	21.602
2) SA Decachlor...	10.231	8.669	45870448	24254023	22.141	19.780

Target Compounds

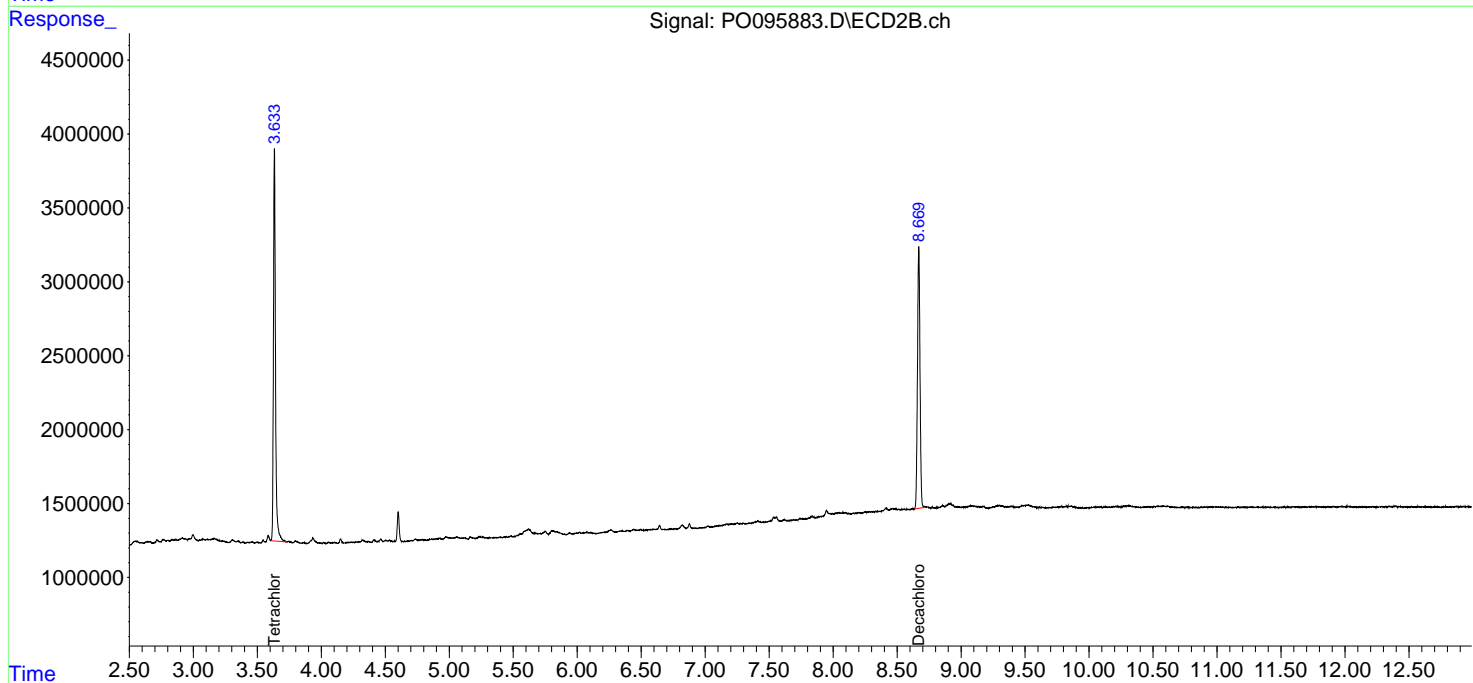
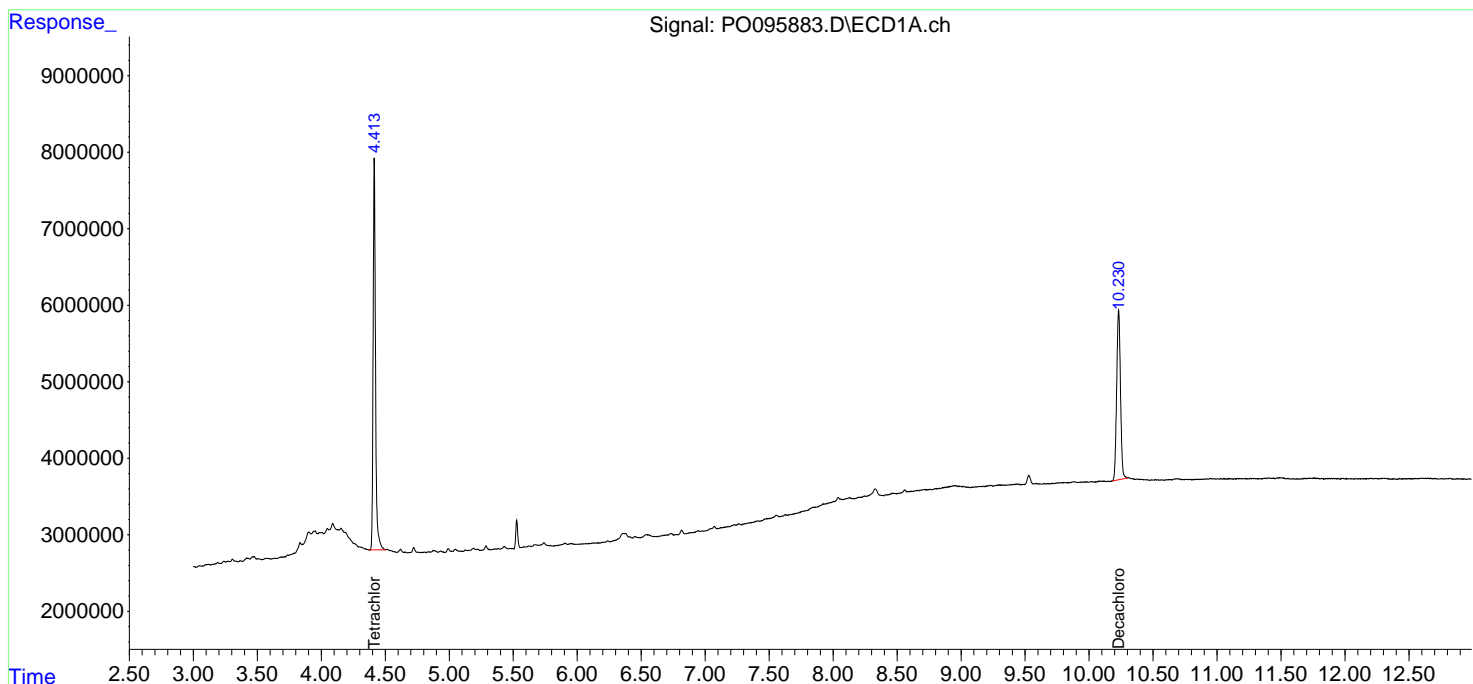
(f)=RT Delta > 1/2 Window (#)=Amounts differ by > 25% (m)=manual int.

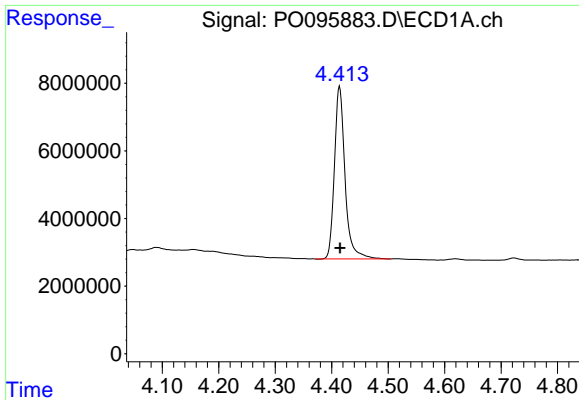
Data Path : Z:\pestpcbsrv\HPCHEM1\ECD_0\Data\P0062223\
 Data File : P0095883.D
 Signal(s) : Signal #1: ECD1A.ch Signal #2: ECD2B.ch
 Acq On : 22 Jun 2023 20:41
 Operator : YP/AJ
 Sample : 03336-04
 Misc :
 ALS Vial : 25 Sample Multiplier: 1

Instrument :
 ECD_0
 ClientSampleId :
 WC-5

Integration File signal 1: autoint1.e
 Integration File signal 2: autoint2.e
 Quant Time: Jun 22 22:39:40 2023
 Quant Method : Z:\pestpcbsrv\HPCHEM1\ECD_0\methods\P0062023.M
 Quant Title : GC EXTRACTABLES
 QLast Update : Wed Jun 21 13:08:39 2023
 Response via : Initial Calibration
 Integrator: ChemStation

Volume Inj. : 2 µl
 Signal #1 Phase : ZB-MR1 Signal #2 Phase: ZB-MR2
 Signal #1 Info : 30Mx0.32mmx 0.50µ Signal #2 Info : 30M x 0.32mm x 0.25µm

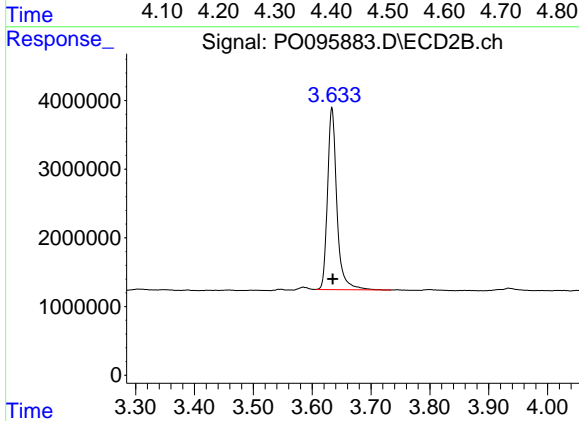




#1 Tetrachloro-m-xylene

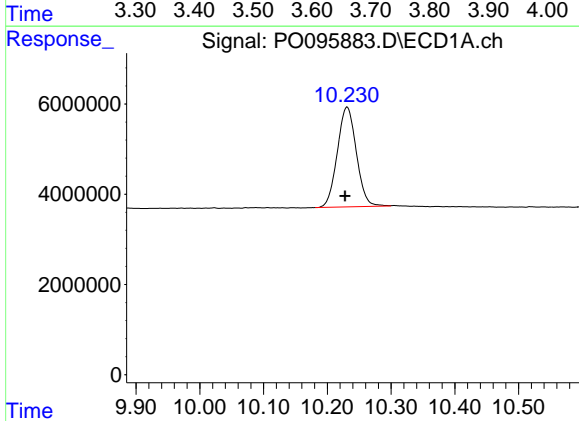
R.T.: 4.414 min
 Delta R.T.: 0.000 min
 Response: 66541253
 Conc: 22.87 ng/ml

Instrument :
 ECD_O
 ClientSampleId :
 WC-5



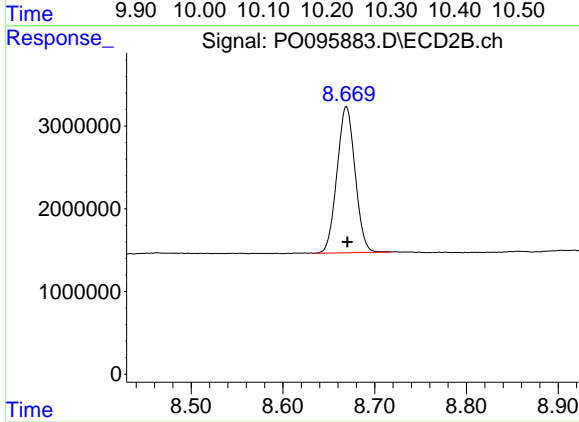
#1 Tetrachloro-m-xylene

R.T.: 3.634 min
 Delta R.T.: -0.002 min
 Response: 29318376
 Conc: 21.60 ng/ml



#2 Decachlorobiphenyl

R.T.: 10.231 min
 Delta R.T.: 0.003 min
 Response: 45870448
 Conc: 22.14 ng/ml



#2 Decachlorobiphenyl

R.T.: 8.669 min
 Delta R.T.: 0.000 min
 Response: 24254023
 Conc: 19.78 ng/ml