

Data Path : Z:\pestpcbsrv\HPCHEM1\ECD_0\Data\P0062321\
 Data File : P0079044.D
 Signal(s) : Signal #1: ECD1A.CH Signal #2: ECD2B.CH
 Acq On : 23 Jun 2021 9:28
 Operator : DD\AJ
 Sample : AR1248CCC500
 Misc :
 ALS Vial : 5 Sample Multiplier: 1

Instrument :
 ECD_0
ClientSampleId :
 AR1248CCC500

Manual Integrations
APPROVED
 Ankita
 6/24/2021 1:22:03 PM

Integration File signal 1: autoint1.e
 Integration File signal 2: autoint2.e
 Quant Time: Jun 24 00:22:31 2021
 Quant Method : Z:\pestpcbsrv\HPCHEM1\ECD_0\methods\P0061921.M
 Quant Title : GC EXTRACTABLES
 QLast Update : Sun Jun 20 03:02:02 2021
 Response via : Initial Calibration
 Integrator: ChemStation 6890 Scale Mode: Small noise peaks clipped

Volume Inj. : 2 µl
 Signal #1 Phase : ZB-MR1 Signal #2 Phase: ZB-MR2
 Signal #1 Info : 30Mx0.32mmx 0.50µ Signal #2 Info : 30M x 0.32mm x 0.25µm

Compound	RT#1	RT#2	Resp#1	Resp#2	ng/ml	ng/ml

System Monitoring Compounds						
1) SA Tetrachlo...	4.330	3.601	4188457	1510936	53.070	50.838
2) SA Decachlor...	9.932	8.781	2897453	1376079	46.393	46.179
Target Compounds						
21) L5 AR-1248-1	5.625	4.827	812616	295174	514.475	463.618
22) L5 AR-1248-2	5.915	5.086	1099900	440606	497.183	446.328
23) L5 AR-1248-3	6.126	5.128	1328995	442961	512.512	446.184
24) L5 AR-1248-4	6.549	5.309	1315015	482258	474.455m	410.712
25) L5 AR-1248-5	6.586	5.724	1331884	507142	487.498m	470.982

(f)=RT Delta > 1/2 Window (#)=Amounts differ by > 25% (m)=manual int.

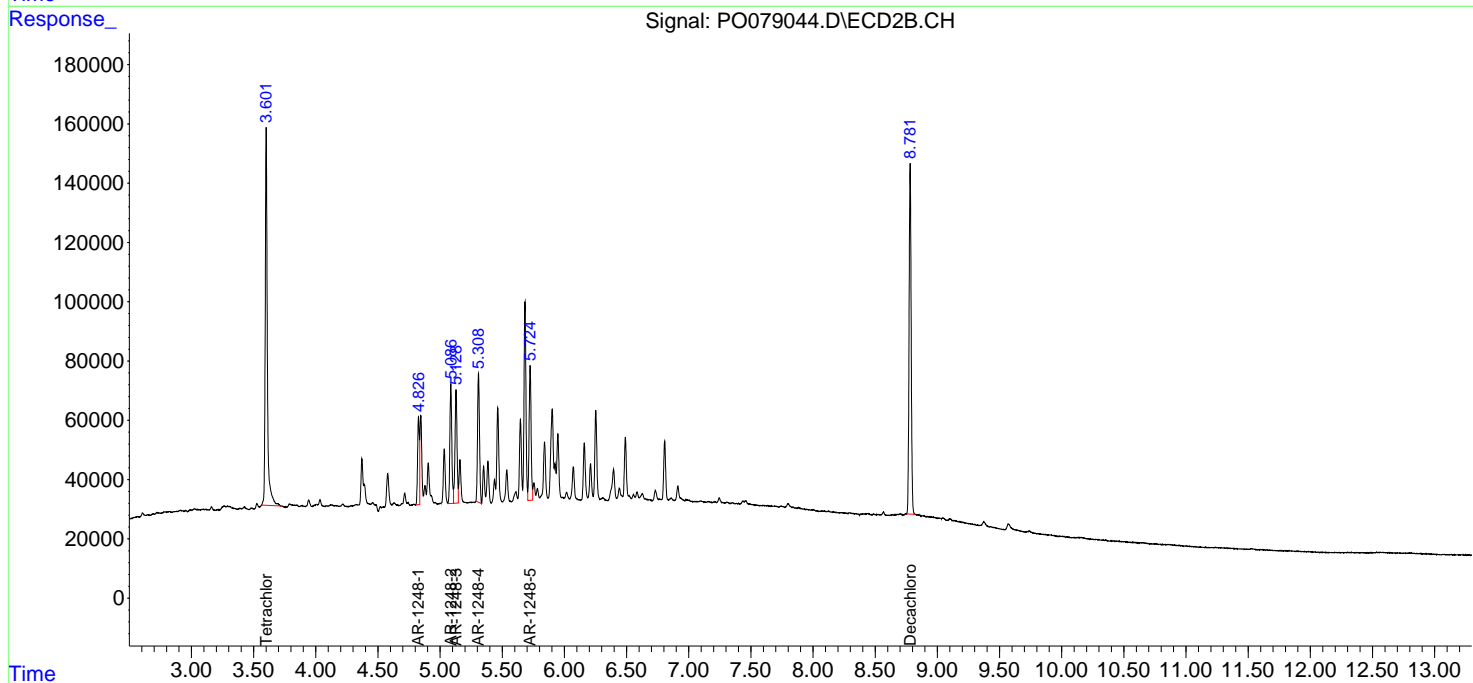
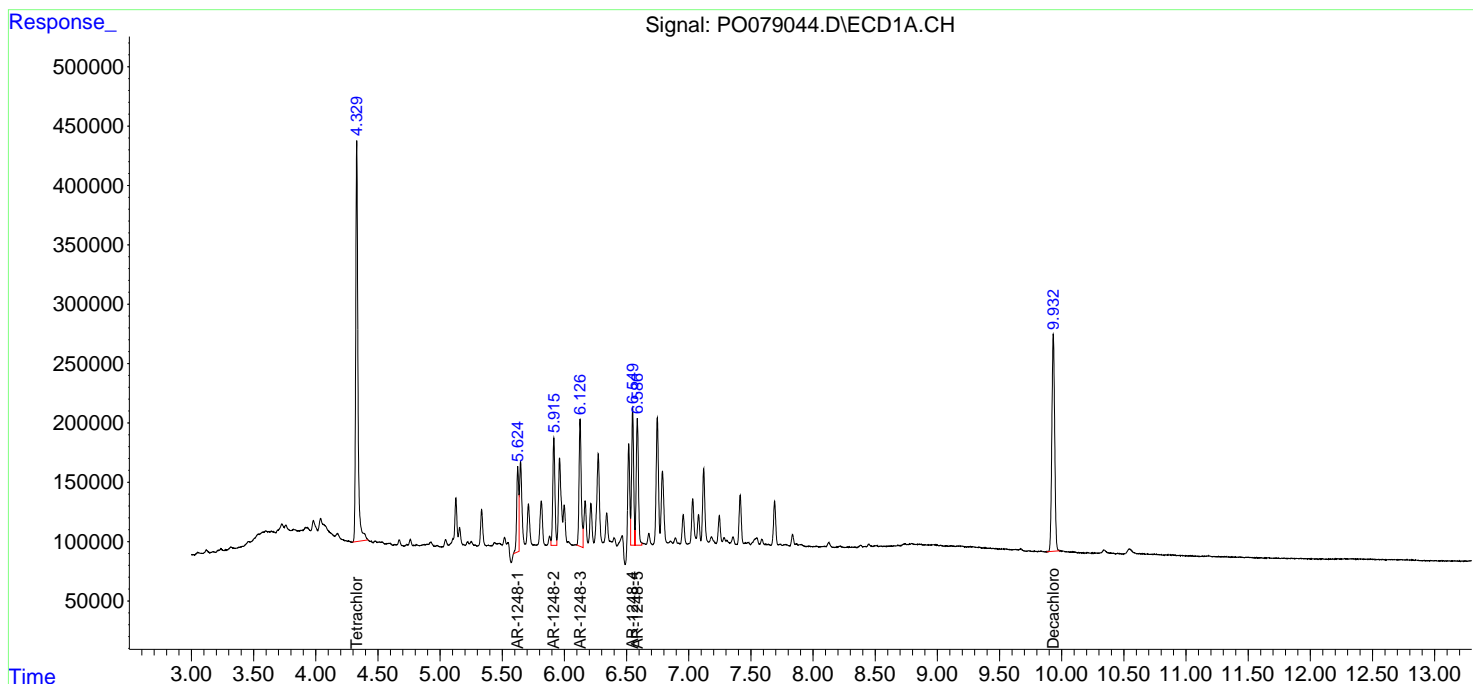
Data Path : Z:\pestpcbsrv\HPCHEM1\ECD_O\Data\P0062321\
 Data File : P0079044.D
 Signal(s) : Signal #1: ECD1A.CH Signal #2: ECD2B.CH
 Acq On : 23 Jun 2021 9:28
 Operator : DD\AJ
 Sample : AR1248CCC500
 Misc :
 ALS Vial : 5 Sample Multiplier: 1

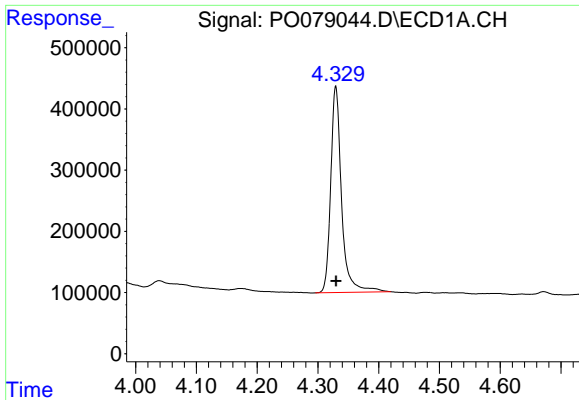
Instrument :
 ECD_O
Client Sampled :
 AR1248CCC500

Manual Integrations
APPROVED
 Ankita
 6/24/2021 1:22:03 PM

Integration File signal 1: autoint1.e
 Integration File signal 2: autoint2.e
 Quant Time: Jun 24 00:22:31 2021
 Quant Method : Z:\pestpcbsrv\HPCHEM1\ECD_O\methods\P0061921.M
 Quant Title : GC EXTRACTABLES
 QLast Update : Sun Jun 20 03:02:02 2021
 Response via : Initial Calibration
 Integrator: ChemStation 6890 Scale Mode: Small noise peaks clipped

Volume Inj. : 2 µl
 Signal #1 Phase : ZB-MR1 Signal #2 Phase: ZB-MR2
 Signal #1 Info : 30Mx0.32mmx 0.50µ Signal #2 Info : 30M x 0.32mm x 0.25µm

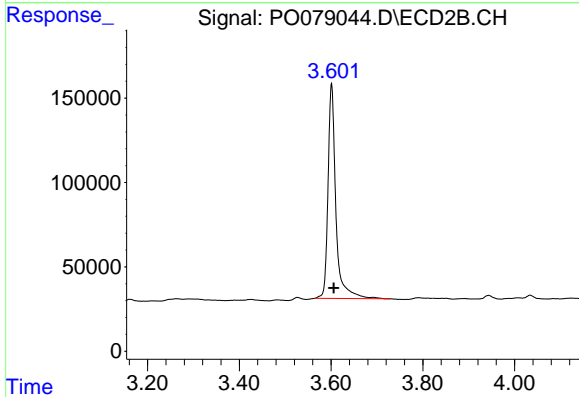




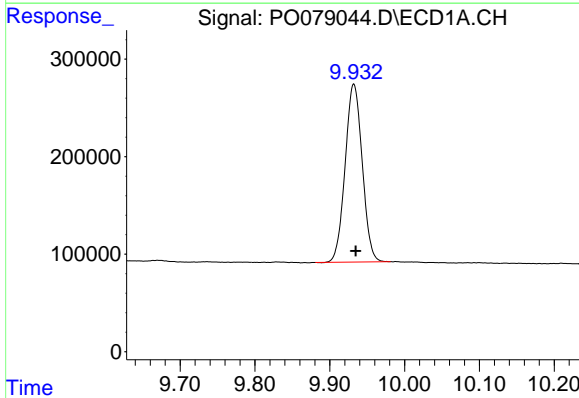
#1 Tetrachloro-m-xylene
 R.T.: 4.330 min
 Delta R.T.: 0.000 min
 Response: 4188457
 Conc: 53.07 ng/ml

Instrument :
 ECD_O
ClientSampleId :
 AR1248CCC500

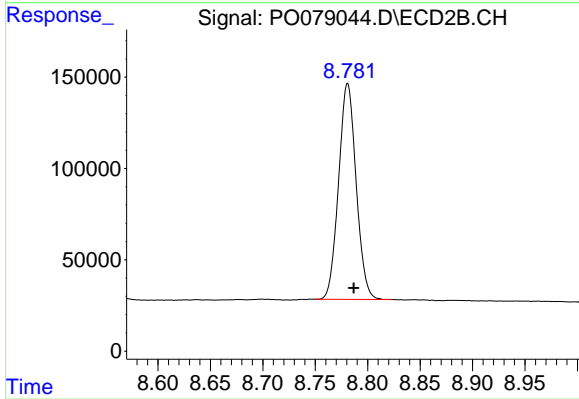
Manual Integrations
APPROVED
 Ankita
 6/24/2021 1:22:03 PM



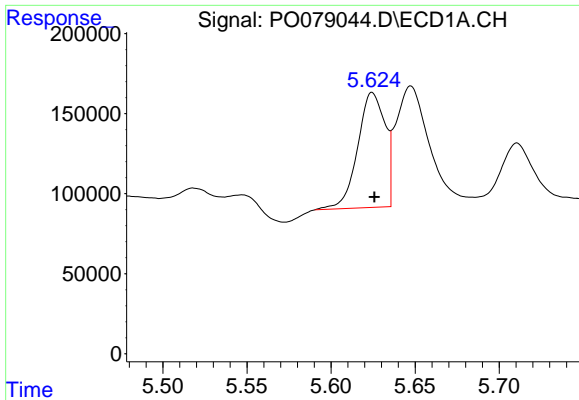
#1 Tetrachloro-m-xylene
 R.T.: 3.601 min
 Delta R.T.: -0.005 min
 Response: 1510936
 Conc: 50.84 ng/ml



#2 Decachlorobiphenyl
 R.T.: 9.932 min
 Delta R.T.: -0.003 min
 Response: 2897453
 Conc: 46.39 ng/ml



#2 Decachlorobiphenyl
 R.T.: 8.781 min
 Delta R.T.: -0.006 min
 Response: 1376079
 Conc: 46.18 ng/ml

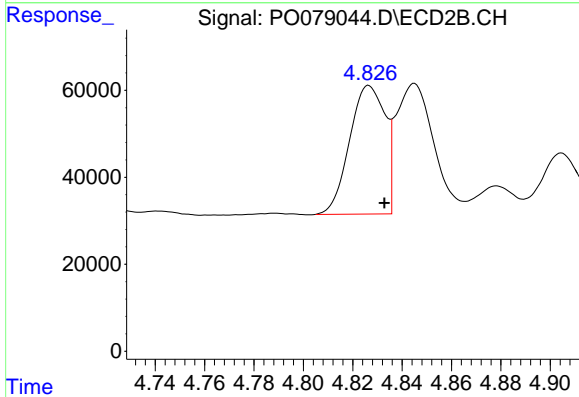


#21 AR-1248-1

R.T.: 5.625 min
 Delta R.T.: 0.000 min
 Response: 812616
 Conc: 514.48 ng/ml

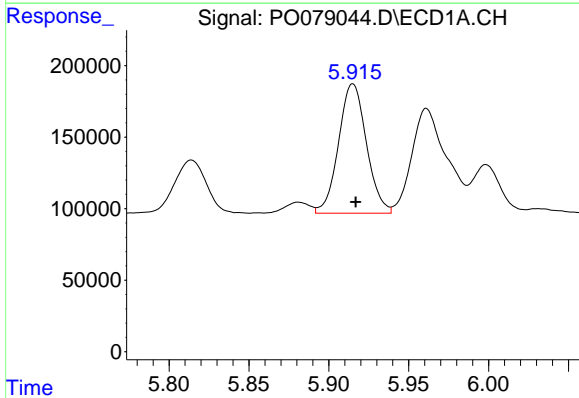
Instrument :
 ECD_O
ClientSampled :
 AR1248CCC500

Manual Integrations
APPROVED
 Ankita
 6/24/2021 1:22:03 PM



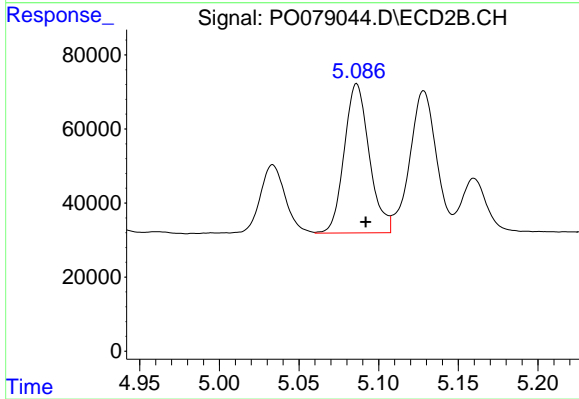
#21 AR-1248-1

R.T.: 4.827 min
 Delta R.T.: -0.006 min
 Response: 295174
 Conc: 463.62 ng/ml



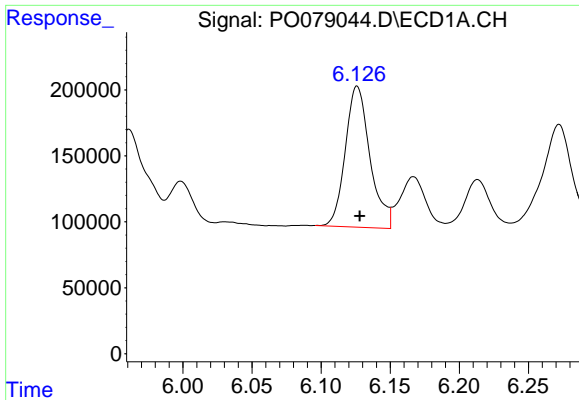
#22 AR-1248-2

R.T.: 5.915 min
 Delta R.T.: -0.002 min
 Response: 1099900
 Conc: 497.18 ng/ml



#22 AR-1248-2

R.T.: 5.086 min
 Delta R.T.: -0.006 min
 Response: 440606
 Conc: 446.33 ng/ml

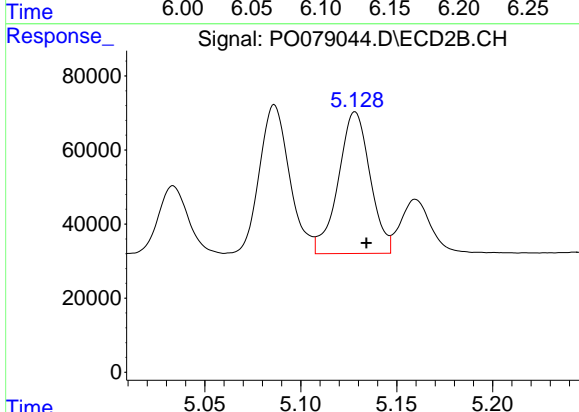


#23 AR-1248-3

R.T.: 6.126 min
 Delta R.T.: -0.002 min
 Response: 1328995
 Conc: 512.51 ng/ml

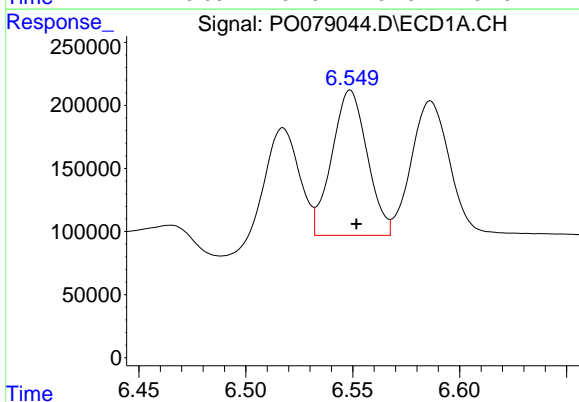
Instrument :
 ECD_O
ClientSampled :
 AR1248CCC500

Manual Integrations
APPROVED
 Ankita
 6/24/2021 1:22:03 PM



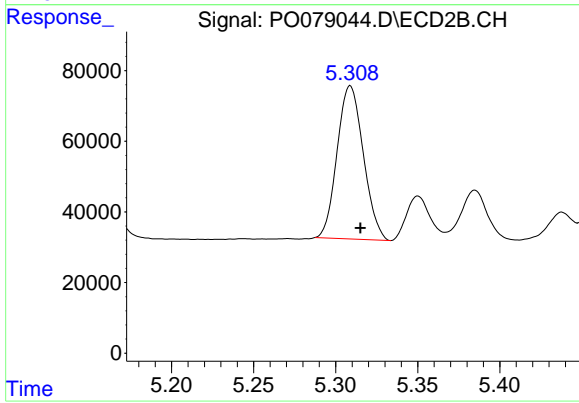
#23 AR-1248-3

R.T.: 5.128 min
 Delta R.T.: -0.006 min
 Response: 442961
 Conc: 446.18 ng/ml



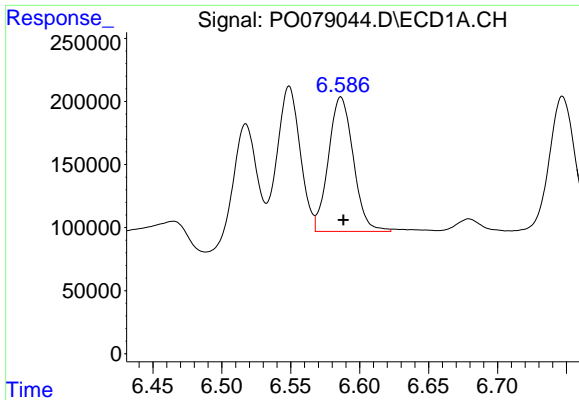
#24 AR-1248-4

R.T.: 6.549 min
 Delta R.T.: -0.003 min
 Response: 1315015
 Conc: 474.46 ng/ml m



#24 AR-1248-4

R.T.: 5.309 min
 Delta R.T.: -0.006 min
 Response: 482258
 Conc: 410.71 ng/ml

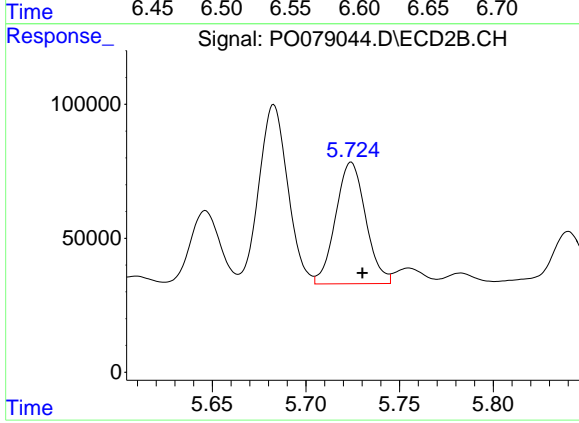


#25 AR-1248-5

R.T.: 6.586 min
Delta R.T.: -0.002 min
Response: 1331884
Conc: 487.50 ng/ml m

Instrument :
ECD_O
ClientSampled :
AR1248CCC500

Manual Integrations
APPROVED
Ankita
6/24/2021 1:22:03 PM



#25 AR-1248-5

R.T.: 5.724 min
Delta R.T.: -0.006 min
Response: 507142
Conc: 470.98 ng/ml