

Data Path : Z:\pestpcbsrv\HPCHEM1\ECD\_0\Data\P0062421\  
 Data File : P0079128.D  
 Signal(s) : Signal #1: ECD1A.CH Signal #2: ECD2B.CH  
 Acq On : 24 Jun 2021 19:15  
 Operator : DD\AJ  
 Sample : M2823-02  
 Misc :  
 ALS Vial : 26 Sample Multiplier: 1

Instrument :  
 ECD\_0  
 ClientSampleId :  
 33275

Integration File signal 1: autoint1.e  
 Integration File signal 2: autoint2.e  
 Quant Time: Jun 25 02:33:17 2021  
 Quant Method : Z:\pestpcbsrv\HPCHEM1\ECD\_0\methods\P0061921.M  
 Quant Title : GC EXTRACTABLES  
 QLast Update : Sun Jun 20 03:02:02 2021  
 Response via : Initial Calibration  
 Integrator: ChemStation 6890 Scale Mode: Small noise peaks clipped

Volume Inj. : 2 µl  
 Signal #1 Phase : ZB-MR1 Signal #2 Phase: ZB-MR2  
 Signal #1 Info : 30Mx0.32mmx 0.50µ Signal #2 Info : 30M x 0.32mm x 0.25µm

Compound	RT#1	RT#2	Resp#1	Resp#2	ng/ml	ng/ml
-----						
System Monitoring Compounds						
1) SA Tetrachlo...	4.322	3.600	1598713	609517	20.257m	20.508
2) SA Decachlor...	9.923	8.778	1268451	581681	20.310	19.520

Target Compounds

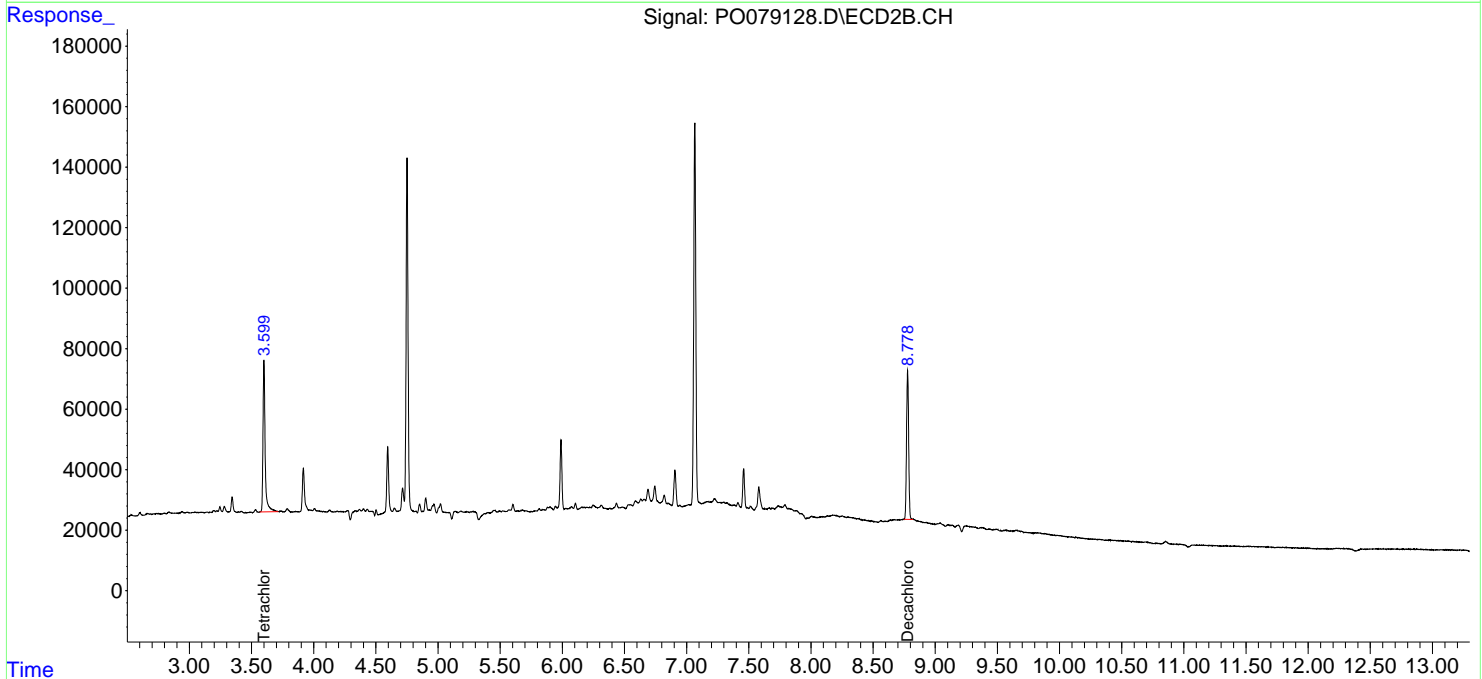
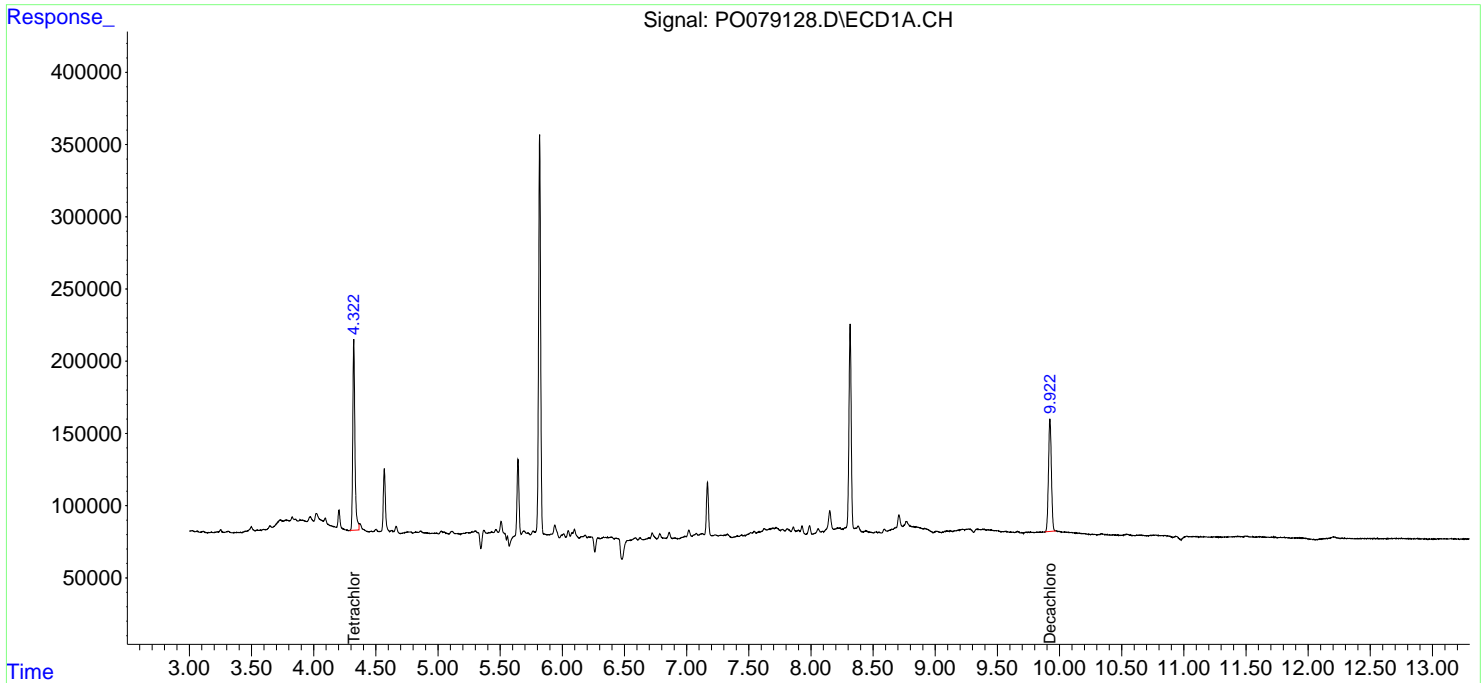
(f)=RT Delta > 1/2 Window (#)=Amounts differ by > 25% (m)=manual int.

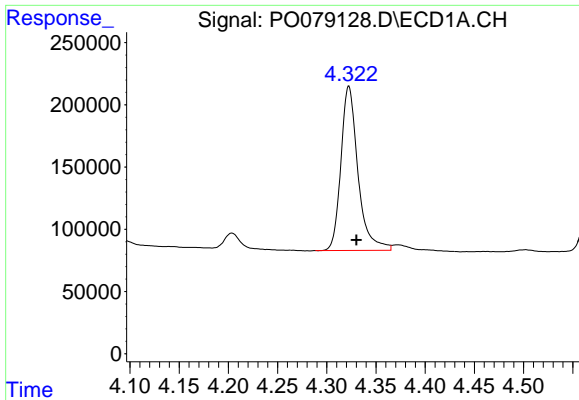
Data Path : Z:\pestpcbsrv\HPCHEM1\ECD\_0\Data\P0062421\  
 Data File : P0079128.D  
 Signal(s) : Signal #1: ECD1A.CH Signal #2: ECD2B.CH  
 Acq On : 24 Jun 2021 19:15  
 Operator : DD\AJ  
 Sample : M2823-02  
 Misc :  
 ALS Vial : 26 Sample Multiplier: 1

Instrument :  
 ECD\_O  
 ClientSampled :  
 33275

Integration File signal 1: autoint1.e  
 Integration File signal 2: autoint2.e  
 Quant Time: Jun 25 02:33:17 2021  
 Quant Method : Z:\pestpcbsrv\HPCHEM1\ECD\_0\methods\P0061921.M  
 Quant Title : GC EXTRACTABLES  
 QLast Update : Sun Jun 20 03:02:02 2021  
 Response via : Initial Calibration  
 Integrator: ChemStation 6890 Scale Mode: Small noise peaks clipped

Volume Inj. : 2 µl  
 Signal #1 Phase : ZB-MR1 Signal #2 Phase: ZB-MR2  
 Signal #1 Info : 30Mx0.32mmx 0.50µ Signal #2 Info : 30M x 0.32mm x 0.25µm

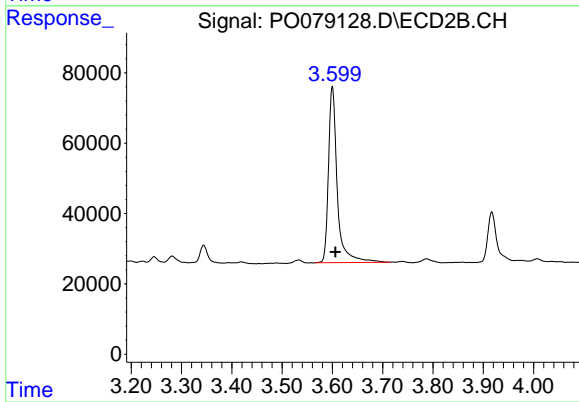




#1 Tetrachloro-m-xylene

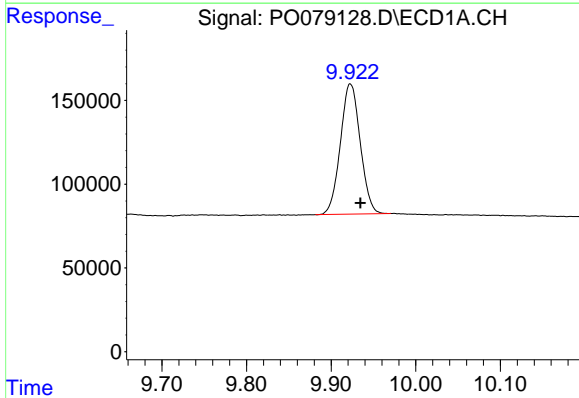
R.T.: 4.322 min  
 Delta R.T.: -0.008 min  
 Response: 1598713  
 Conc: 20.26 ng/ml m

Instrument :  
 ECD\_O  
 ClientSampleId :  
 33275



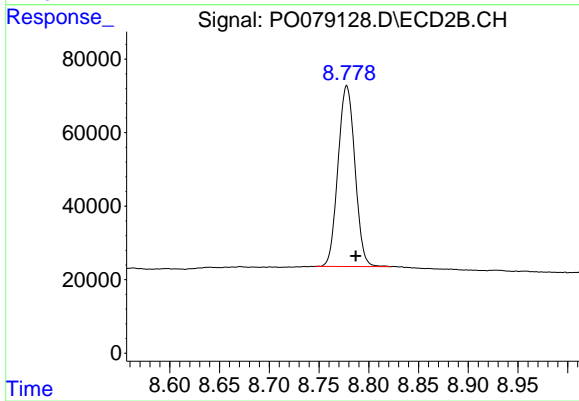
#1 Tetrachloro-m-xylene

R.T.: 3.600 min  
 Delta R.T.: -0.006 min  
 Response: 609517  
 Conc: 20.51 ng/ml



#2 Decachlorobiphenyl

R.T.: 9.923 min  
 Delta R.T.: -0.012 min  
 Response: 1268451  
 Conc: 20.31 ng/ml



#2 Decachlorobiphenyl

R.T.: 8.778 min  
 Delta R.T.: -0.009 min  
 Response: 581681  
 Conc: 19.52 ng/ml