

Data Path : Z:\pestpcbsrv\HPCHEM1\ECD_0\Data\P0062520\
 Data File : P0069202.D
 Signal(s) : Signal #1: ECD1A.CH Signal #2: ECD2B.CH
 Acq On : 25 Jun 2020 15:33
 Operator : DD\AJ
 Sample : AR1660CCC500
 Misc :
 ALS Vial : 3 Sample Multiplier: 1

Instrument :
 ECD_0
 ClientSampleId :
 AR1660CCC500

Integration File signal 1: autoint1.e
 Integration File signal 2: autoint2.e
 Quant Time: Jun 25 16:13:30 2020
 Quant Method : Z:\pestpcbsrv\HPCHEM1\ECD_0\methods\P0061820.M
 Quant Title : GC EXTRACTABLES
 QLast Update : Fri Jun 19 05:15:02 2020
 Response via : Initial Calibration
 Integrator: ChemStation 6890 Scale Mode: Small noise peaks clipped

Volume Inj. : 2 µl
 Signal #1 Phase : ZB-MR1 Signal #2 Phase: ZB-MR2
 Signal #1 Info : 30Mx0.32mmx 0.50µ Signal #2 Info : 30M x 0.32mm x 0.25µm

	Compound	RT#1	RT#2	Resp#1	Resp#2	ng/ml	ng/ml

System Monitoring Compounds							
1)	SA Tetrachlo...	4.402	3.563	1647870	1879502	55.703	48.832
2)	SA Decachlor...	10.066	8.770	2515847	2567024	52.969	47.157
Target Compounds							
3)	L1 AR-1016-1	5.708	4.794	722666	732195	558.363	484.354
4)	L1 AR-1016-2	5.731	4.813	1022249	1015762	556.987	479.059
5)	L1 AR-1016-3	5.794	4.998	618549	553302	553.008	491.027
6)	L1 AR-1016-4	5.900	5.055	518669	485938	553.134	494.428
7)	L1 AR-1016-5	6.211	5.276	518671	595190	514.626	488.976
31)	L7 AR-1260-1	7.374	6.361	918801	1062865	481.444	454.225
32)	L7 AR-1260-2	7.641	6.561	1148635	1303796	490.761	458.030
33)	L7 AR-1260-3	8.000	6.710	882967	1192204	497.009	443.269
34)	L7 AR-1260-4	8.227	7.188	964926	1055764	462.696	440.660
35)	L7 AR-1260-5	8.542	7.439	2049811	2484730	466.350	428.891

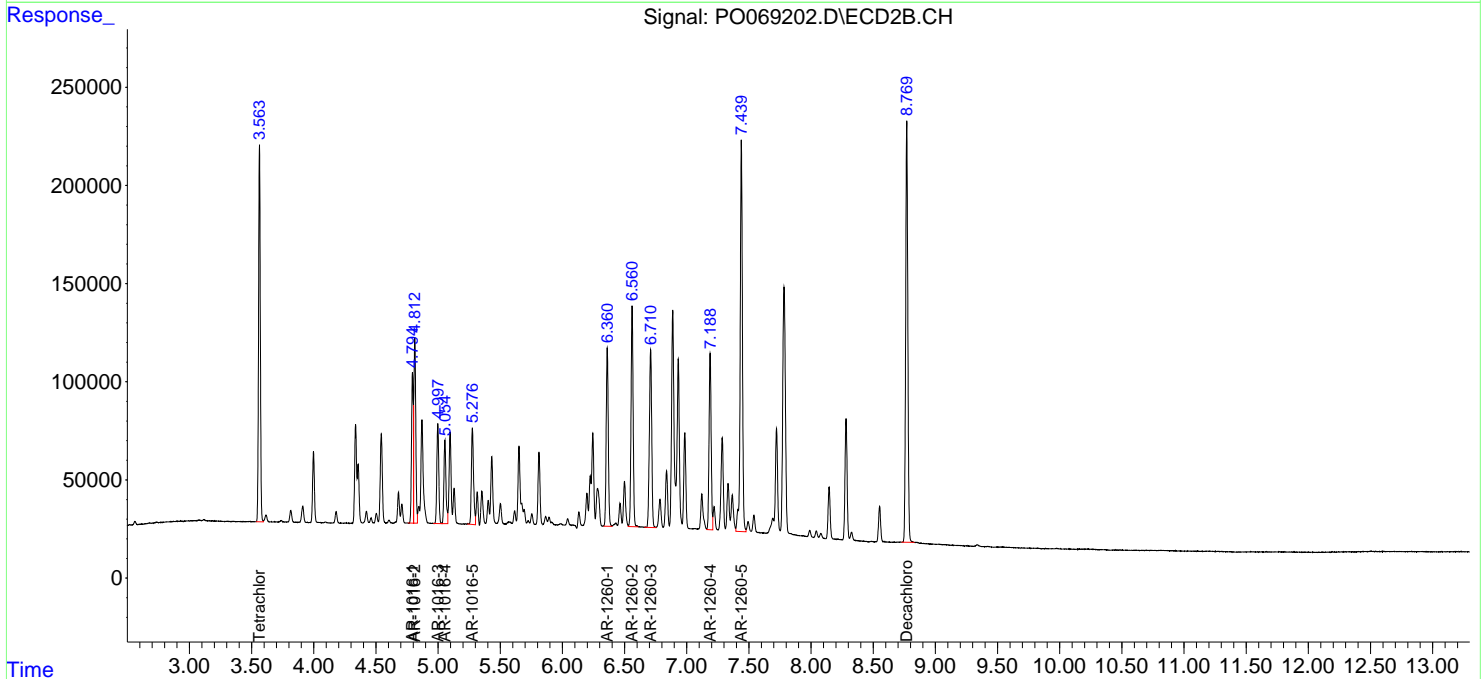
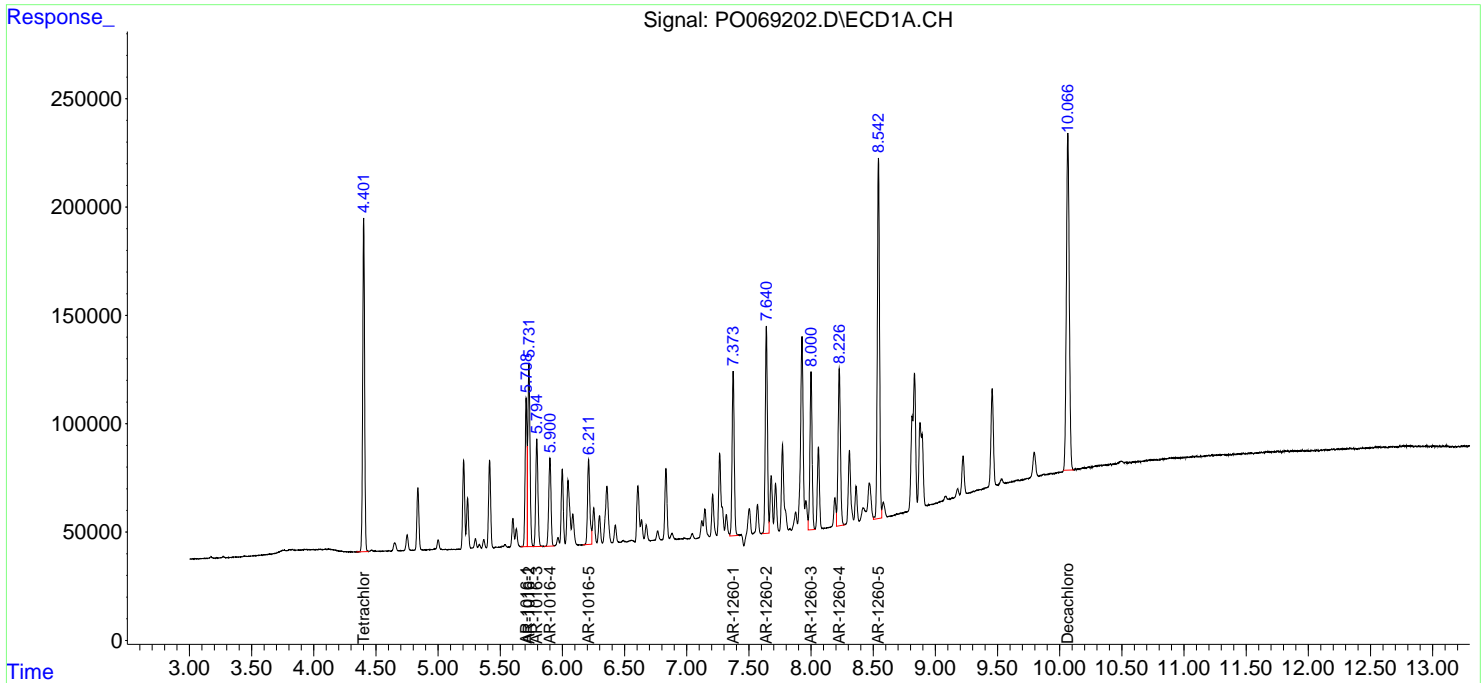
(f)=RT Delta > 1/2 Window (#)=Amounts differ by > 25% (m)=manual int.

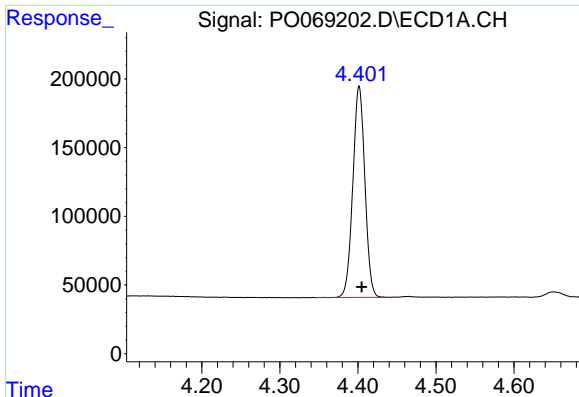
Data Path : Z:\pestpcbsrv\HPCHEM1\ECD_O\Data\P0062520\
 Data File : P0069202.D
 Signal(s) : Signal #1: ECD1A.CH Signal #2: ECD2B.CH
 Acq On : 25 Jun 2020 15:33
 Operator : DD\AJ
 Sample : AR1660CCC500
 Misc :
 ALS Vial : 3 Sample Multiplier: 1

Instrument :
 ECD_O
 ClientSampled :
 AR1660CCC500

Integration File signal 1: autoint1.e
 Integration File signal 2: autoint2.e
 Quant Time: Jun 25 16:13:30 2020
 Quant Method : Z:\pestpcbsrv\HPCHEM1\ECD_O\methods\P0061820.M
 Quant Title : GC EXTRACTABLES
 QLast Update : Fri Jun 19 05:15:02 2020
 Response via : Initial Calibration
 Integrator: ChemStation 6890 Scale Mode: Small noise peaks clipped

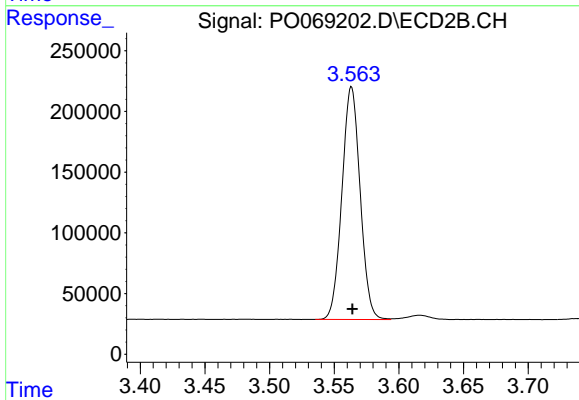
Volume Inj. : 2 µl
 Signal #1 Phase : ZB-MR1 Signal #2 Phase: ZB-MR2
 Signal #1 Info : 30Mx0.32mmx 0.50µ Signal #2 Info : 30M x 0.32mm x 0.25µm



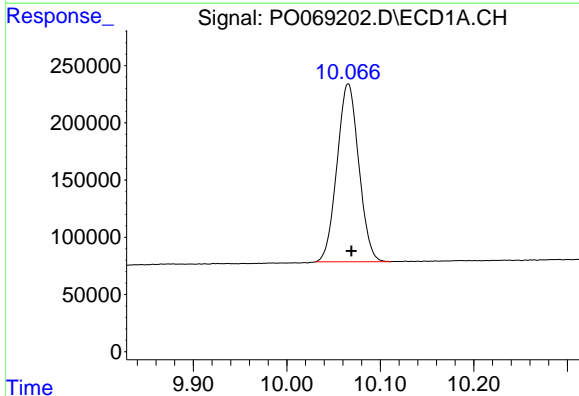


#1 Tetrachloro-m-xylene
 R.T.: 4.402 min
 Delta R.T.: -0.003 min
 Response: 1647870
 Conc: 55.70 ng/ml

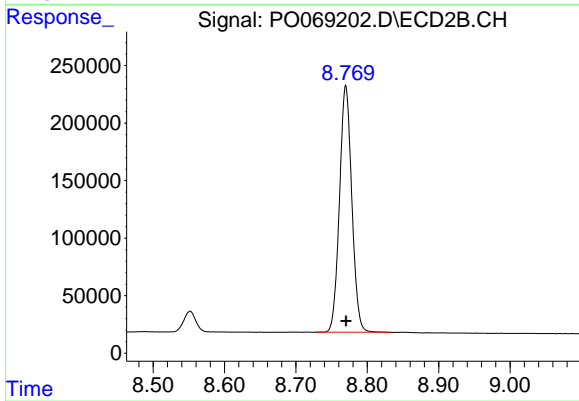
Instrument :
 ECD_O
 ClientSampleId :
 AR1660CCC500



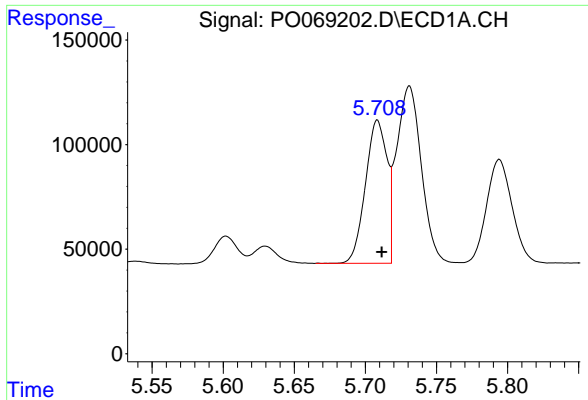
#1 Tetrachloro-m-xylene
 R.T.: 3.563 min
 Delta R.T.: 0.000 min
 Response: 1879502
 Conc: 48.83 ng/ml



#2 Decachlorobiphenyl
 R.T.: 10.066 min
 Delta R.T.: -0.003 min
 Response: 2515847
 Conc: 52.97 ng/ml

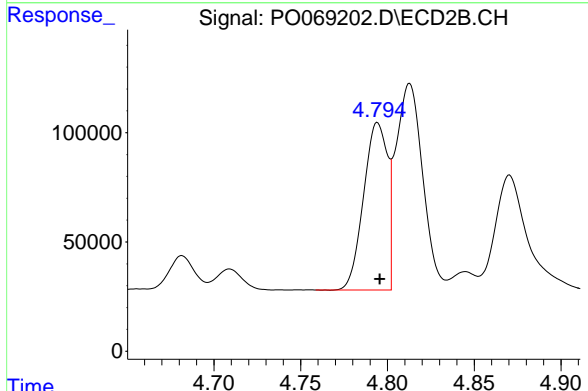


#2 Decachlorobiphenyl
 R.T.: 8.770 min
 Delta R.T.: 0.000 min
 Response: 2567024
 Conc: 47.16 ng/ml

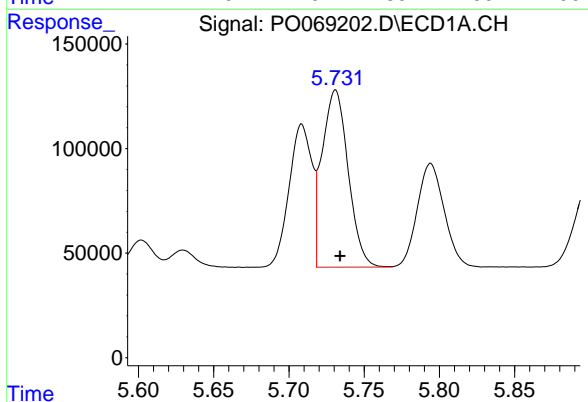


#3 AR-1016-1
 R.T.: 5.708 min
 Delta R.T.: -0.003 min
 Response: 722666
 Conc: 558.36 ng/ml

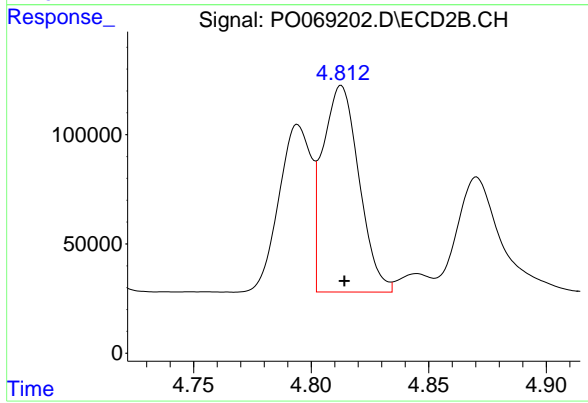
Instrument :
 ECD_O
ClientSampled :
 AR1660CCC500



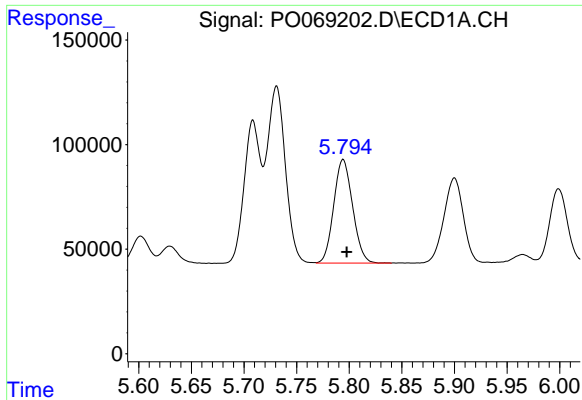
#3 AR-1016-1
 R.T.: 4.794 min
 Delta R.T.: -0.001 min
 Response: 732195
 Conc: 484.35 ng/ml



#4 AR-1016-2
 R.T.: 5.731 min
 Delta R.T.: -0.003 min
 Response: 1022249
 Conc: 556.99 ng/ml



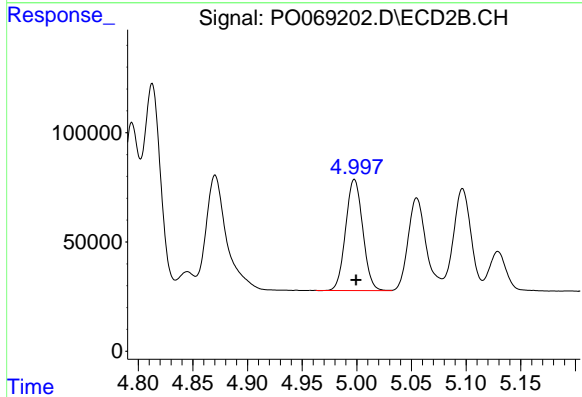
#4 AR-1016-2
 R.T.: 4.813 min
 Delta R.T.: -0.001 min
 Response: 1015762
 Conc: 479.06 ng/ml



#5 AR-1016-3

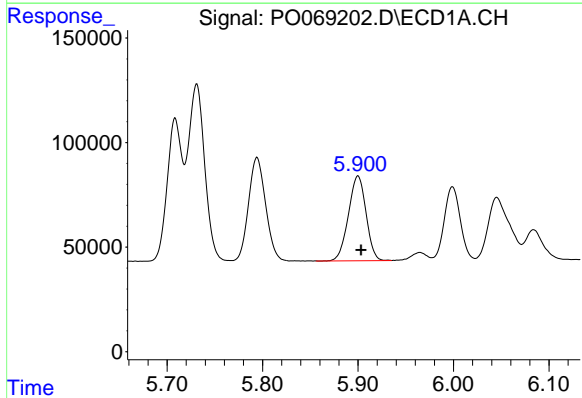
R.T.: 5.794 min
 Delta R.T.: -0.004 min
 Response: 618549
 Conc: 553.01 ng/ml

Instrument :
 ECD_O
 ClientSampleId :
 AR1660CCC500



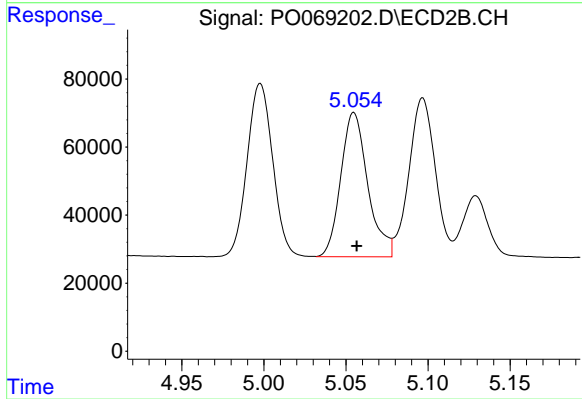
#5 AR-1016-3

R.T.: 4.998 min
 Delta R.T.: -0.001 min
 Response: 553302
 Conc: 491.03 ng/ml



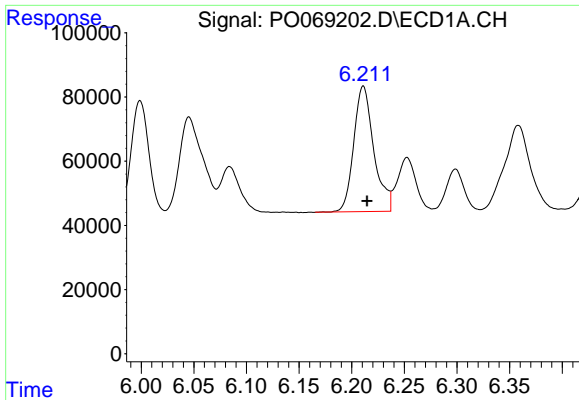
#6 AR-1016-4

R.T.: 5.900 min
 Delta R.T.: -0.003 min
 Response: 518669
 Conc: 553.13 ng/ml



#6 AR-1016-4

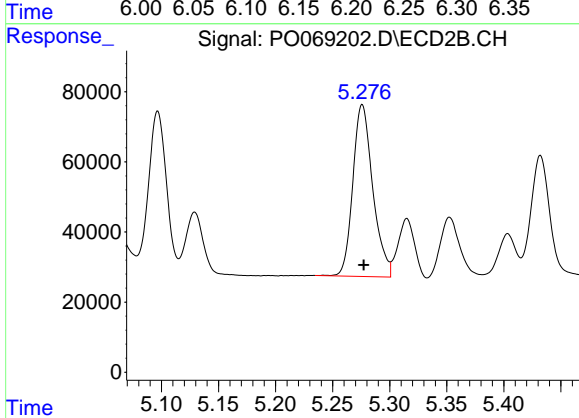
R.T.: 5.055 min
 Delta R.T.: -0.002 min
 Response: 485938
 Conc: 494.43 ng/ml



#7 AR-1016-5

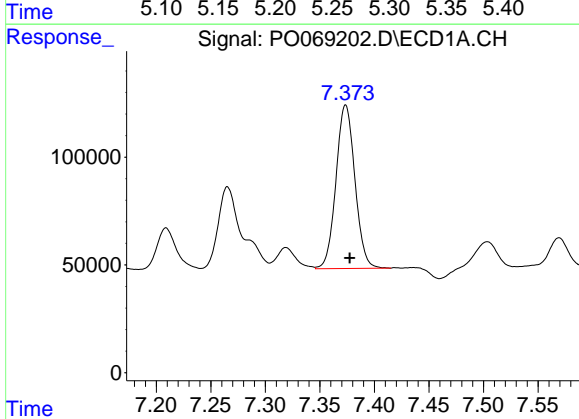
R.T.: 6.211 min
 Delta R.T.: -0.004 min
 Response: 518671
 Conc: 514.63 ng/ml

Instrument :
 ECD_O
ClientSampled :
 AR1660CCC500



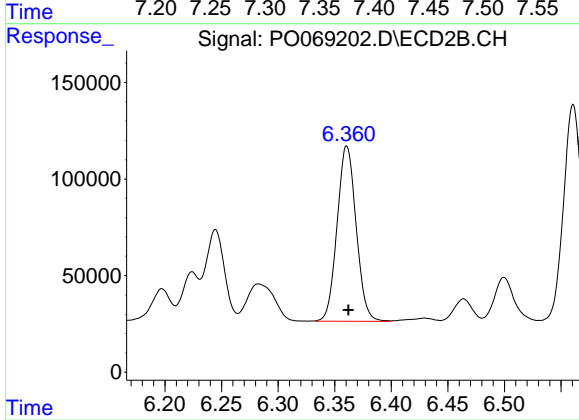
#7 AR-1016-5

R.T.: 5.276 min
 Delta R.T.: -0.001 min
 Response: 595190
 Conc: 488.98 ng/ml



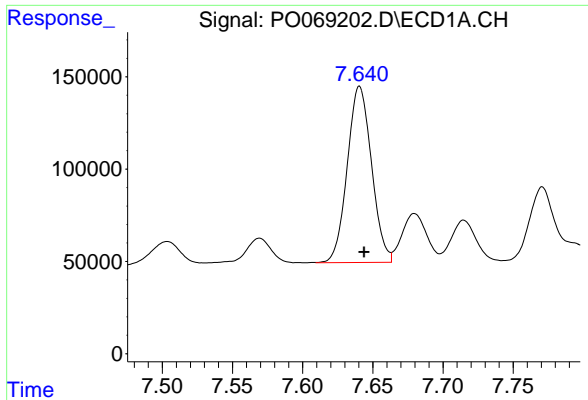
#31 AR-1260-1

R.T.: 7.374 min
 Delta R.T.: -0.004 min
 Response: 918801
 Conc: 481.44 ng/ml



#31 AR-1260-1

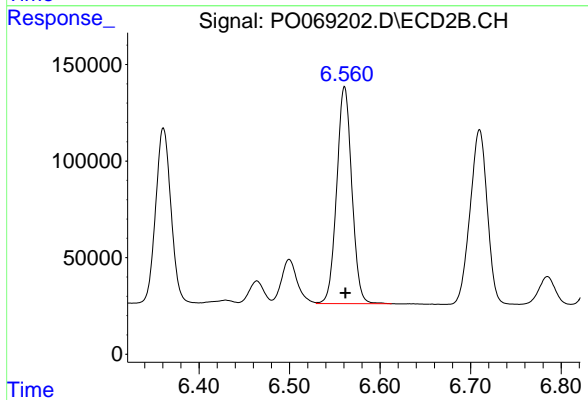
R.T.: 6.361 min
 Delta R.T.: -0.001 min
 Response: 1062865
 Conc: 454.23 ng/ml



#32 AR-1260-2

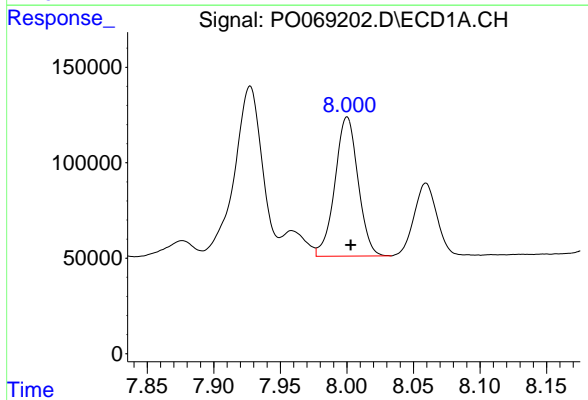
R.T.: 7.641 min
Delta R.T.: -0.003 min
Response: 1148635
Conc: 490.76 ng/ml

Instrument :
ECD_O
ClientSampleId :
AR1660CCC500



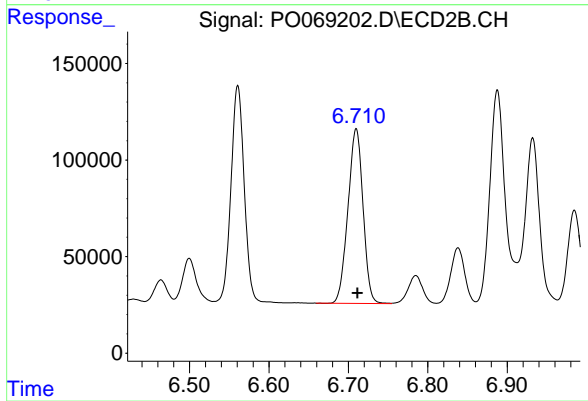
#32 AR-1260-2

R.T.: 6.561 min
Delta R.T.: -0.001 min
Response: 1303796
Conc: 458.03 ng/ml



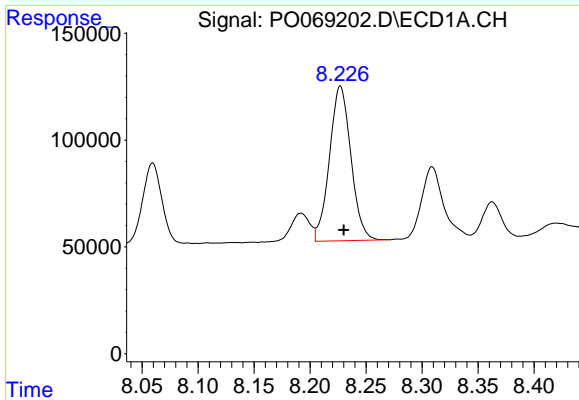
#33 AR-1260-3

R.T.: 8.000 min
Delta R.T.: -0.003 min
Response: 882967
Conc: 497.01 ng/ml



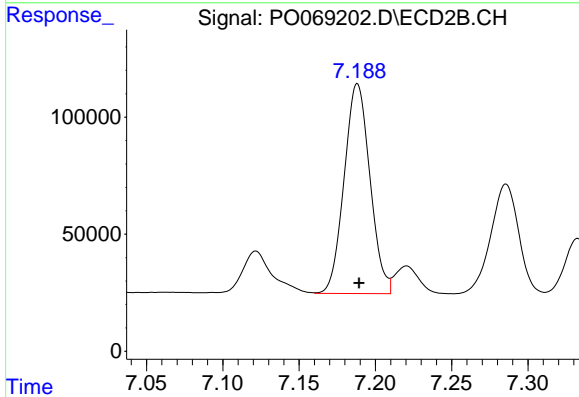
#33 AR-1260-3

R.T.: 6.710 min
Delta R.T.: -0.001 min
Response: 1192204
Conc: 443.27 ng/ml

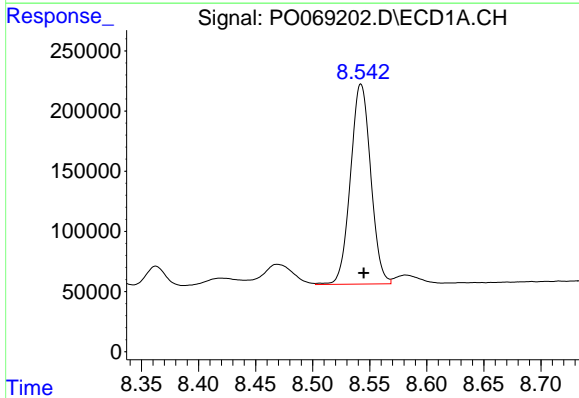


#34 AR-1260-4
 R.T.: 8.227 min
 Delta R.T.: -0.003 min
 Response: 964926
 Conc: 462.70 ng/ml

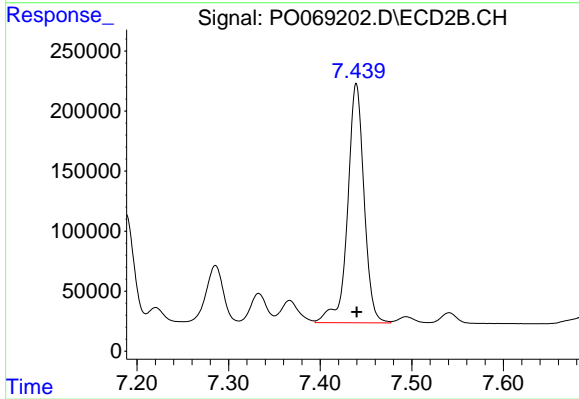
Instrument :
 ECD_O
 ClientSampleId :
 AR1660CCC500



#34 AR-1260-4
 R.T.: 7.188 min
 Delta R.T.: -0.001 min
 Response: 1055764
 Conc: 440.66 ng/ml



#35 AR-1260-5
 R.T.: 8.542 min
 Delta R.T.: -0.002 min
 Response: 2049811
 Conc: 466.35 ng/ml



#35 AR-1260-5
 R.T.: 7.439 min
 Delta R.T.: 0.000 min
 Response: 2484730
 Conc: 428.89 ng/ml