

Data Path : Z:\pestpcbsrv\HPCHEM1\ECD_0\Data\P0062521\
 Data File : P0079189.D
 Signal(s) : Signal #1: ECD1A.CH Signal #2: ECD2B.CH
 Acq On : 26 Jun 2021 3:59
 Operator : DD\AJ
 Sample : M2831-01
 Misc :
 ALS Vial : 40 Sample Multiplier: 1

Instrument :
 ECD_0
 Client Sampled :
 MW-02-OIL

Integration File signal 1: autoint1.e
 Integration File signal 2: autoint2.e
 Quant Time: Jun 28 02:12:28 2021
 Quant Method : Z:\pestpcbsrv\HPCHEM1\ECD_0\methods\P0061921.M
 Quant Title : GC EXTRACTABLES
 QLast Update : Sun Jun 20 03:02:02 2021
 Response via : Initial Calibration
 Integrator: ChemStation 6890 Scale Mode: Small noise peaks clipped

Volume Inj. : 2 µl
 Signal #1 Phase : ZB-MR1 Signal #2 Phase: ZB-MR2
 Signal #1 Info : 30Mx0.32mmx 0.50µ Signal #2 Info : 30M x 0.32mm x 0.25µm

Compound	RT#1	RT#2	Resp#1	Resp#2	ng/ml	ng/ml

System Monitoring Compounds						
1) SA Tetrachlo...	4.332	3.613	1175589	544041	14.895	18.305
2) SA Decachlor...	9.924	8.777	1532981	658795	24.546	22.108
Target Compounds						
3) L1 AR-1016-1	5.646f	0.000	59541	0	22.259	N.D. #
4) L1 AR-1016-2	5.646	0.000	59541	0	14.566	N.D. #
5) L1 AR-1016-3	5.714	0.000	44691	0	17.791	N.D. #
8) L2 AR-1221-1	4.577	0.000	199113	0	239.507	N.D. #
9) L2 AR-1221-2	4.675	3.928f	58508	62960	96.052	248.771 #
10) L2 AR-1221-3	4.755	0.000	44391	0	22.791	N.D. #
11) L3 AR-1232-1	4.755	0.000	44391	0	27.844	N.D. #
12) L3 AR-1232-2	5.327	0.000	18647	0	23.215	N.D. #
13) L3 AR-1232-3	5.646	0.000	59541	0	38.949	N.D. #
14) L3 AR-1232-4	0.000	5.141	0	37650	N.D.	134.885 #
15) L3 AR-1232-5	5.921	0.000	39389	0	76.255	N.D. #
16) L4 AR-1242-1	5.646f	0.000	59541	0	30.013	N.D. #
17) L4 AR-1242-2	5.646	0.000	59541	0	20.018	N.D. #
18) L4 AR-1242-3	5.714	0.000	44691	0	24.149	N.D. #
19) L4 AR-1242-4	0.000	5.141	0	37650	N.D.	61.511 #
20) L4 AR-1242-5	6.592	5.692	23608	46404	15.280	59.342 #
21) L5 AR-1248-1	5.646f	0.000	59541	0	37.696	N.D. #
22) L5 AR-1248-2	5.921	0.000	39389	0	17.805	N.D. #
23) L5 AR-1248-3	0.000	5.141	0	37650	N.D.	37.924 #
24) L5 AR-1248-4	6.524f	0.000	132900	0	47.950	N.D. #
25) L5 AR-1248-5	6.592	5.733	23608	14334	8.641	13.312 #
26) L6 AR-1254-1	6.524	5.692	132900	46404	49.340	27.931 #
27) L6 AR-1254-2	6.749	5.849	123734	50952	29.500	34.574
28) L6 AR-1254-3	7.136	6.252	90691	141675	20.364	63.696 #
29) L6 AR-1254-4	7.421	6.489	184278	82948	59.889	61.005
30) L6 AR-1254-5	7.833	6.914	395449	144714	121.142	72.678 #
31) L7 AR-1260-1	7.286	6.392	163987	121332	49.218	74.959 #
32) L7 AR-1260-2	7.551	6.588	508516	113229	130.836	58.433 #
33) L7 AR-1260-3	7.907	6.737	192529	107027	63.601	58.128
34) L7 AR-1260-4	8.131	7.211	196493	84801	60.006	55.663
35) L7 AR-1260-5	8.444	7.458	366701	191609	57.263	54.110
36) L8 AR-1262-1	7.907	6.914	192529	144714	46.861	138.823 #
37) L8 AR-1262-2	8.444	7.458	366701	191609	55.071	54.298
39) L8 AR-1262-4	0.000	7.800	0	153173	N.D.	56.950 #
40) L8 AR-1262-5	9.337	8.294	162675	47015	67.141	38.819 #
42) L9 AR-1268-2	0.000	7.800	0	153173	N.D.	38.793 #
43) L9 AR-1268-3	0.000	8.032f	0	61650	N.D.	18.110 #
44) L9 AR-1268-4	9.337	8.294	162675	47015	63.202	32.896 #
45) L9 AR-1268-5	9.669	8.562	94969	9182	4.740	0.891 #

Data Path : Z:\pestpcbsrv\HPCHEM1\ECD_0\Data\P0062521\
Data File : P0079189.D
Signal(s) : Signal #1: ECD1A.CH Signal #2: ECD2B.CH
Acq On : 26 Jun 2021 3:59
Operator : DD\AJ
Sample : M2831-01
Misc :
ALS Vial : 40 Sample Multiplier: 1

Instrument :
ECD_0
ClientSampleId :
MW-02-OIL

Integration File signal 1: autoint1.e
Integration File signal 2: autoint2.e
Quant Time: Jun 28 02:12:28 2021
Quant Method : Z:\pestpcbsrv\HPCHEM1\ECD_0\methods\P0061921.M
Quant Title : GC EXTRACTABLES
QLast Update : Sun Jun 20 03:02:02 2021
Response via : Initial Calibration
Integrator: ChemStation 6890 Scale Mode: Small noise peaks clipped

Volume Inj. : 2 µl
Signal #1 Phase : ZB-MR1 Signal #2 Phase: ZB-MR2
Signal #1 Info : 30Mx0.32mmx 0.50µ Signal #2 Info : 30M x 0.32mm x 0.25µm

Compound	RT#1	RT#2	Resp#1	Resp#2	ng/ml	ng/ml
----------	------	------	--------	--------	-------	-------

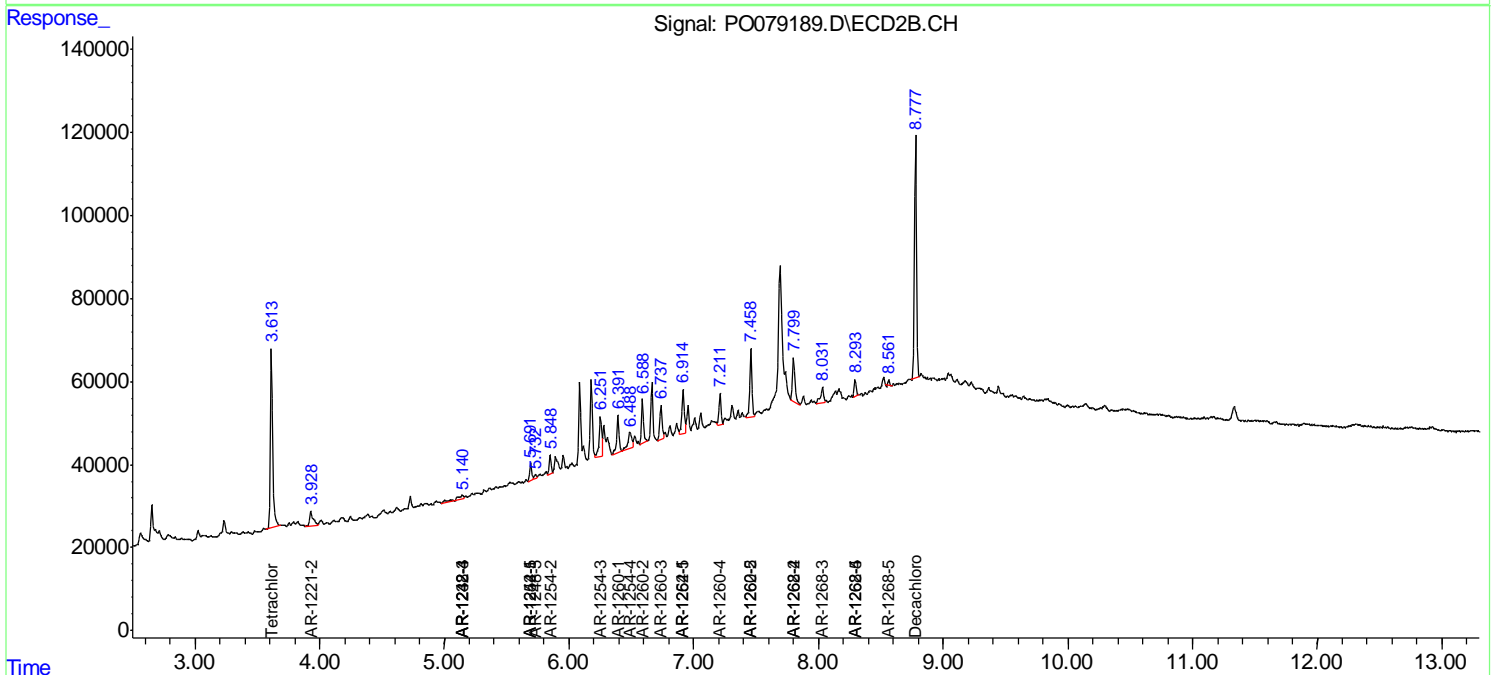
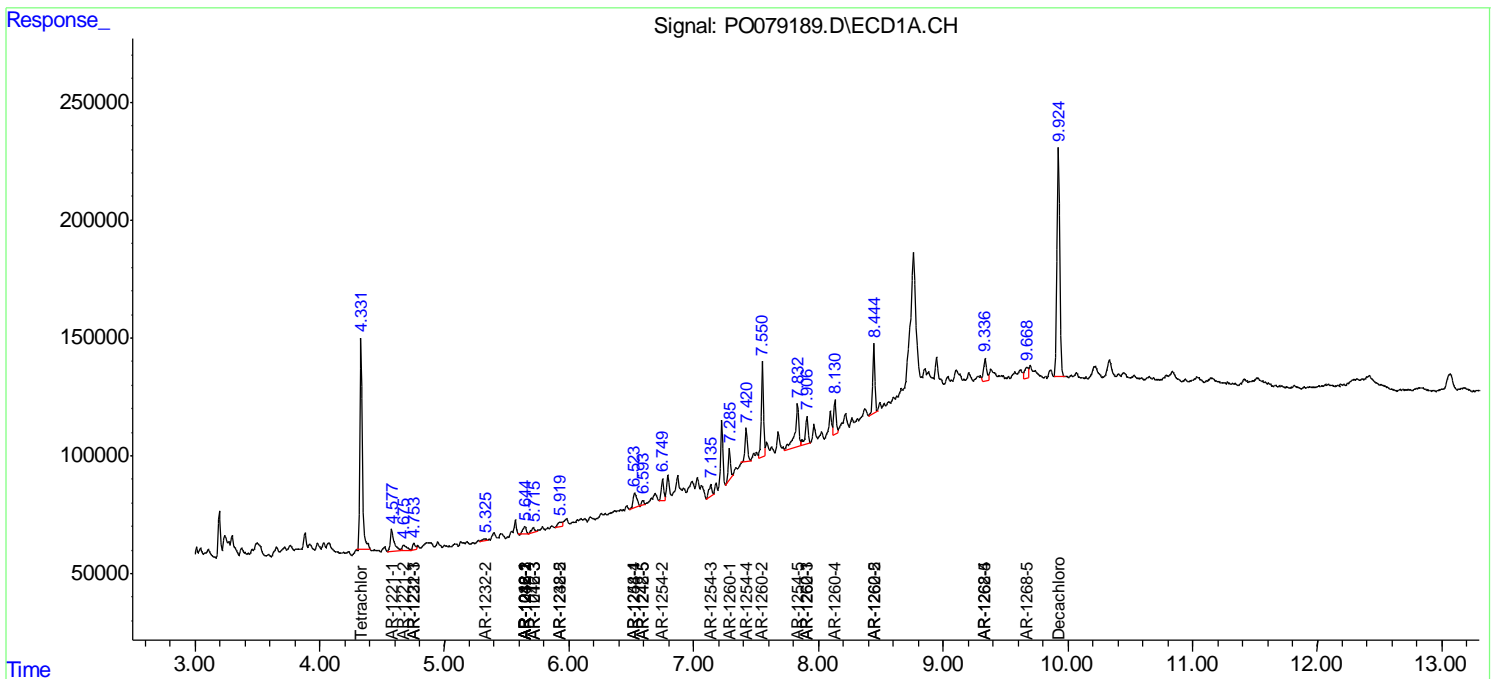
(f)=RT Delta > 1/2 Window (#)=Amounts differ by > 25% (m)=manual int.

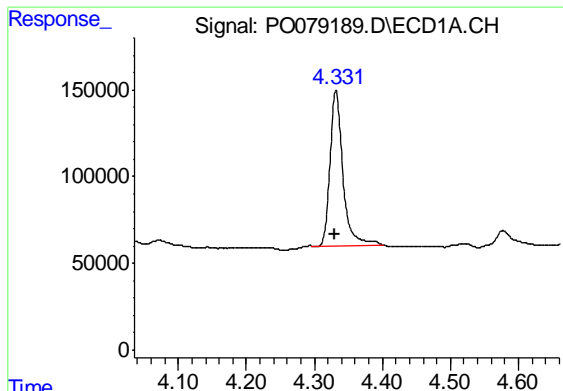
Data Path : Z:\pestpcbsrv\HPCHEM1\ECD_O\Data\PO062521\
 Data File : PO079189.D
 Signal(s) : Signal #1: ECD1A.CH Signal #2: ECD2B.CH
 Acq On : 26 Jun 2021 3:59
 Operator : DD\AJ
 Sample : M2831-01
 Misc :
 ALS Vial : 40 Sample Multiplier: 1

Instrument :
 ECD_O
 Client Sampled :
 MW-02-OIL

Integration File signal 1: autoint1.e
 Integration File signal 2: autoint2.e
 Quant Time: Jun 28 02:12:28 2021
 Quant Method : Z:\pestpcbsrv\HPCHEM1\ECD_O\methods\PO061921.M
 Quant Title : GC EXTRACTABLES
 QLast Update : Sun Jun 20 03:02:02 2021
 Response via : Initial Calibration
 Integrator: ChemStation 6890 Scale Mode: Small noise peaks clipped

Volume Inj. : 2 µl
 Signal #1 Phase : ZB-MR1 Signal #2 Phase: ZB-MR2
 Signal #1 Info : 30Mx0.32mmx 0.50µ Signal #2 Info : 30M x 0.32mm x 0.25µm

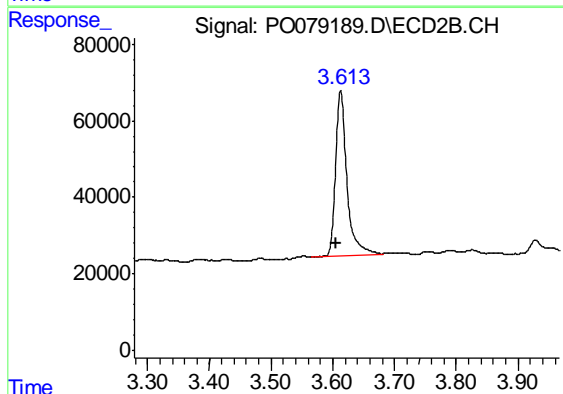




#1 Tetrachloro-m-xylene

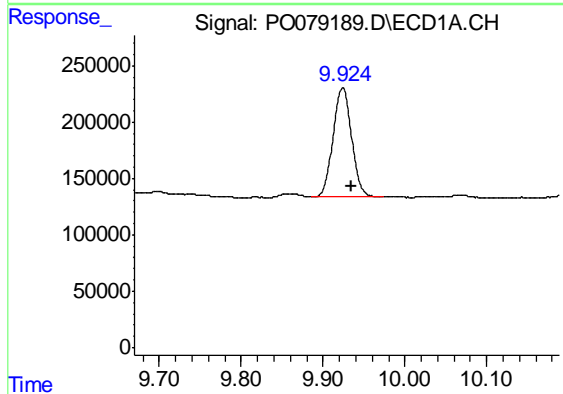
R.T.: 4.332 min
 Delta R.T.: 0.002 min
 Response: 1175589
 Conc: 14.90 ng/ml

Instrument :
 ECD_O
 ClientSampleId :
 MW-02-OIL



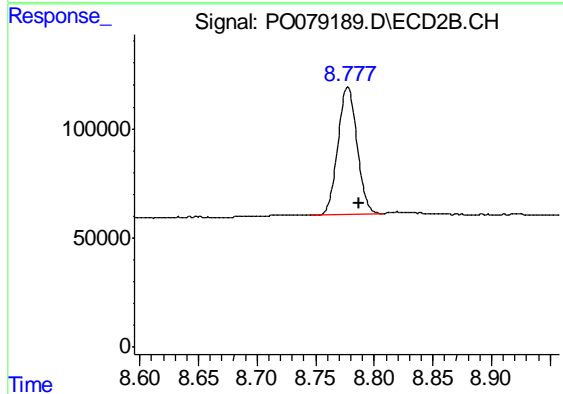
#1 Tetrachloro-m-xylene

R.T.: 3.613 min
 Delta R.T.: 0.007 min
 Response: 544041
 Conc: 18.31 ng/ml



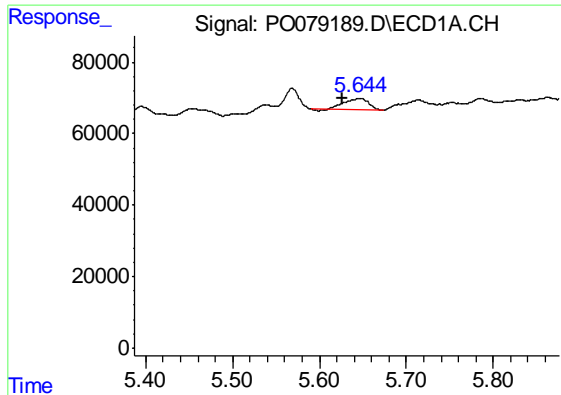
#2 Decachlorobiphenyl

R.T.: 9.924 min
 Delta R.T.: -0.011 min
 Response: 1532981
 Conc: 24.55 ng/ml



#2 Decachlorobiphenyl

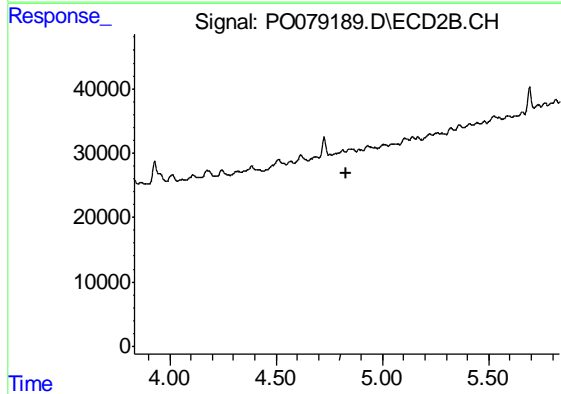
R.T.: 8.777 min
 Delta R.T.: -0.009 min
 Response: 658795
 Conc: 22.11 ng/ml



#3 AR-1016-1

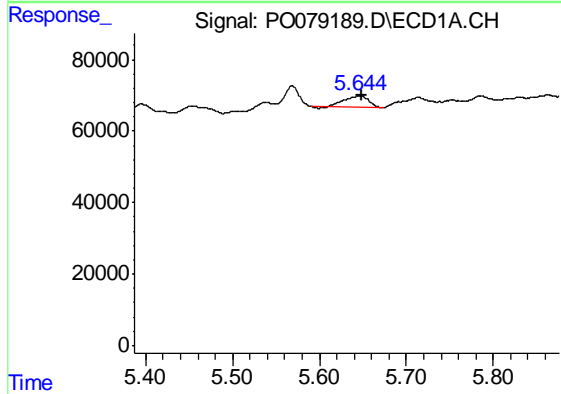
R.T.: 5.646 min
 Delta R.T.: 0.020 min
 Response: 59541
 Conc: 22.26 ng/ml

Instrument :
 ECD_O
 ClientSampleId :
 MW-02-OIL



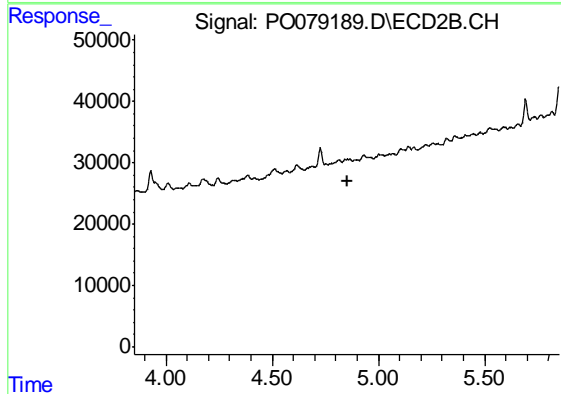
#3 AR-1016-1

R.T.: 0.000 min
 Exp R.T. : 4.833 min
 Response: 0
 Conc: N.D.



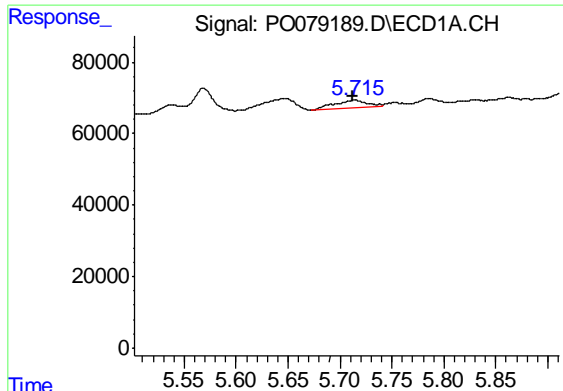
#4 AR-1016-2

R.T.: 5.646 min
 Delta R.T.: -0.002 min
 Response: 59541
 Conc: 14.57 ng/ml



#4 AR-1016-2

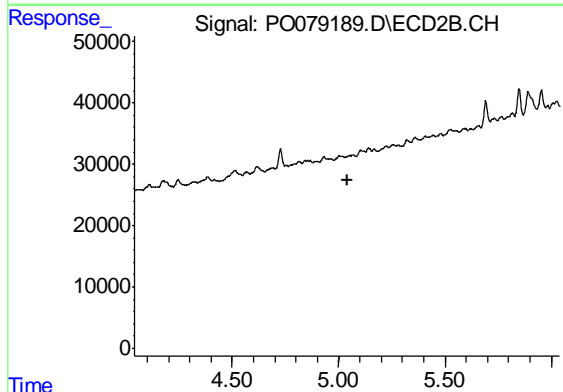
R.T.: 0.000 min
 Exp R.T. : 4.852 min
 Response: 0
 Conc: N.D.



#5 AR-1016-3

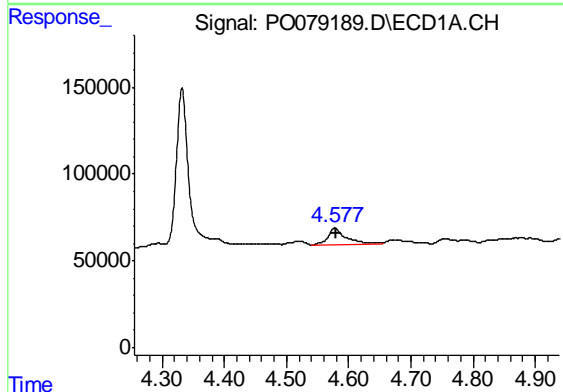
R.T.: 5.714 min
 Delta R.T.: 0.001 min
 Response: 44691
 Conc: 17.79 ng/ml

Instrument :
 ECD_O
 ClientSampleId :
 MW-02-OIL



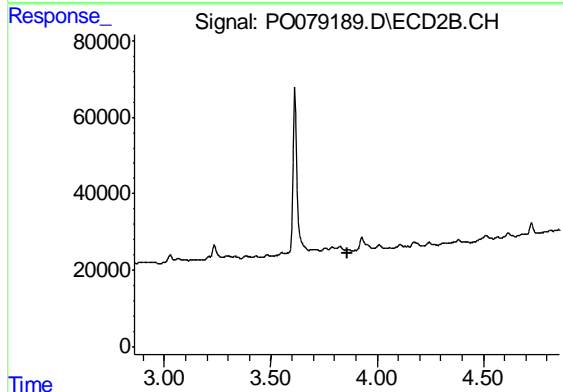
#5 AR-1016-3

R.T.: 0.000 min
 Exp R.T. : 5.039 min
 Response: 0
 Conc: N.D.



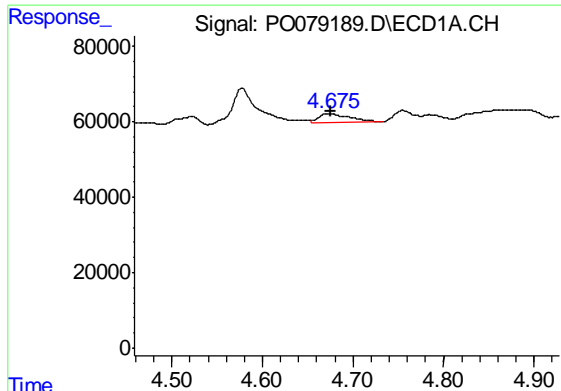
#8 AR-1221-1

R.T.: 4.577 min
 Delta R.T.: -0.003 min
 Response: 199113
 Conc: 239.51 ng/ml



#8 AR-1221-1

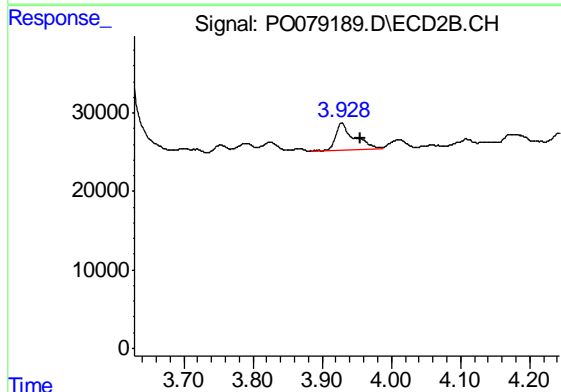
R.T.: 0.000 min
 Exp R.T. : 3.858 min
 Response: 0
 Conc: N.D.



#9 AR-1221-2

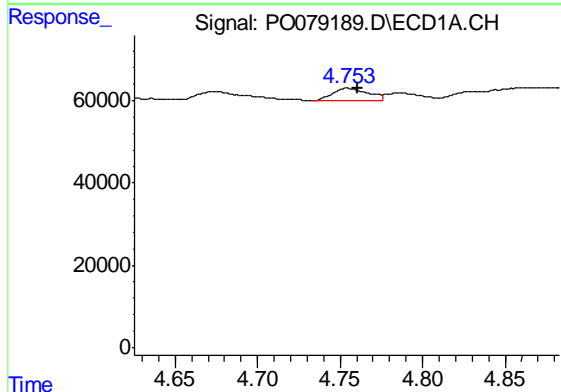
R.T.: 4.675 min
 Delta R.T.: 0.000 min
 Response: 58508
 Conc: 96.05 ng/ml

Instrument :
 ECD_O
 ClientSampled :
 MW-02-OIL



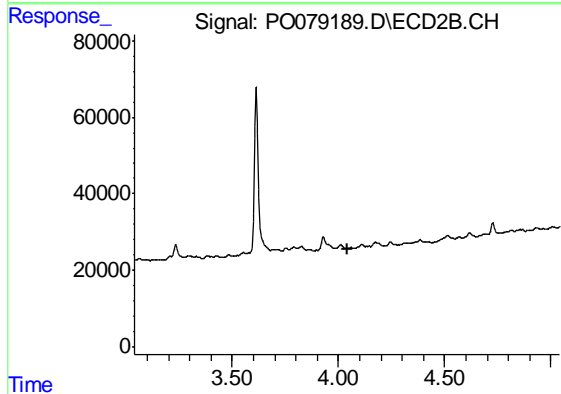
#9 AR-1221-2

R.T.: 3.928 min
 Delta R.T.: -0.026 min
 Response: 62960
 Conc: 248.77 ng/ml



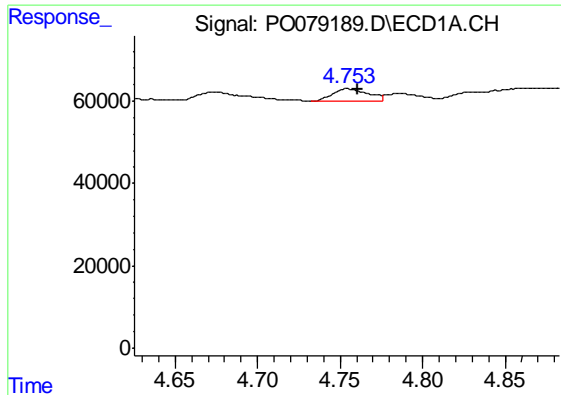
#10 AR-1221-3

R.T.: 4.755 min
 Delta R.T.: -0.006 min
 Response: 44391
 Conc: 22.79 ng/ml



#10 AR-1221-3

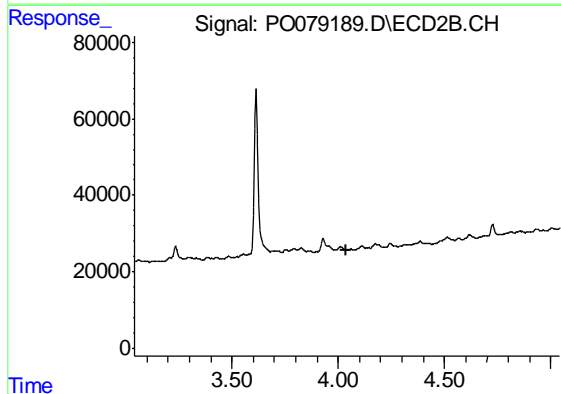
R.T.: 0.000 min
 Exp R.T. : 4.040 min
 Response: 0
 Conc: N.D.



#11 AR-1232-1

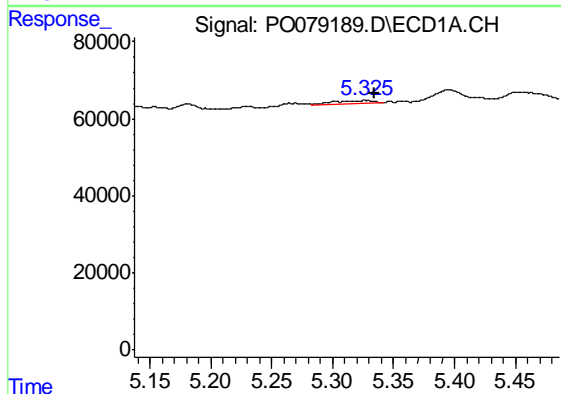
R.T.: 4.755 min
 Delta R.T.: -0.006 min
 Response: 44391
 Conc: 27.84 ng/ml

Instrument :
 ECD_O
 ClientSampled :
 MW-02-OIL



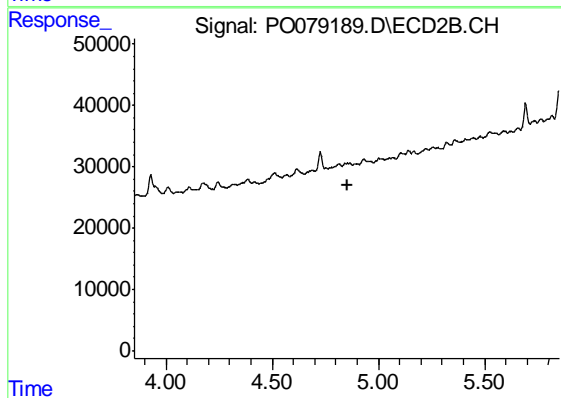
#11 AR-1232-1

R.T.: 0.000 min
 Exp R.T. : 4.041 min
 Response: 0
 Conc: N.D.



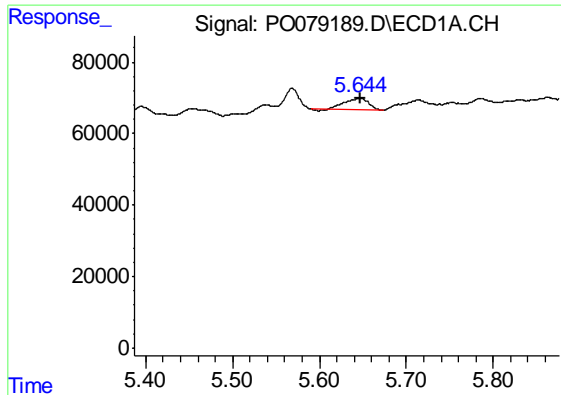
#12 AR-1232-2

R.T.: 5.327 min
 Delta R.T.: -0.008 min
 Response: 18647
 Conc: 23.22 ng/ml



#12 AR-1232-2

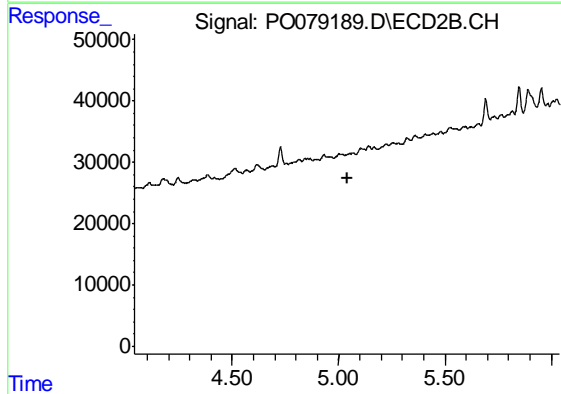
R.T.: 0.000 min
 Exp R.T. : 4.852 min
 Response: 0
 Conc: N.D.



#13 AR-1232-3

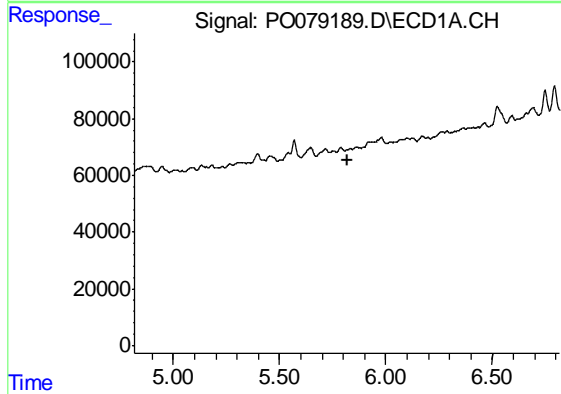
R.T.: 5.646 min
 Delta R.T.: -0.001 min
 Response: 59541
 Conc: 38.95 ng/ml

Instrument :
 ECD_O
 ClientSampleId :
 MW-02-OIL



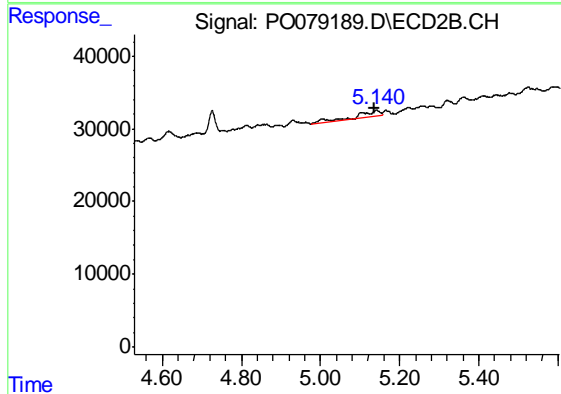
#13 AR-1232-3

R.T.: 0.000 min
 Exp R.T. : 5.039 min
 Response: 0
 Conc: N.D.



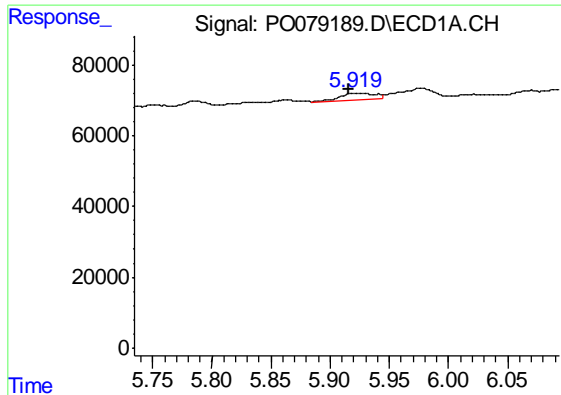
#14 AR-1232-4

R.T.: 0.000 min
 Exp R.T. : 5.817 min
 Response: 0
 Conc: N.D.



#14 AR-1232-4

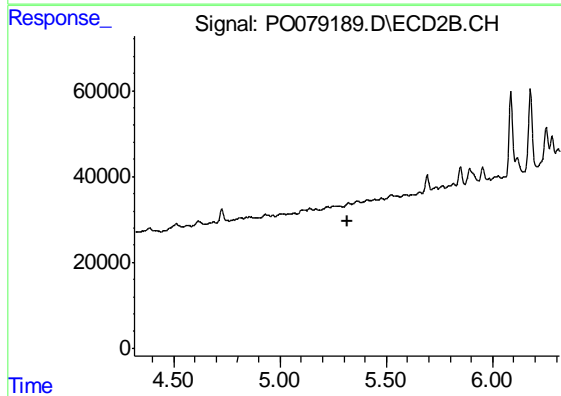
R.T.: 5.141 min
 Delta R.T.: 0.006 min
 Response: 37650
 Conc: 134.88 ng/ml



#15 AR-1232-5

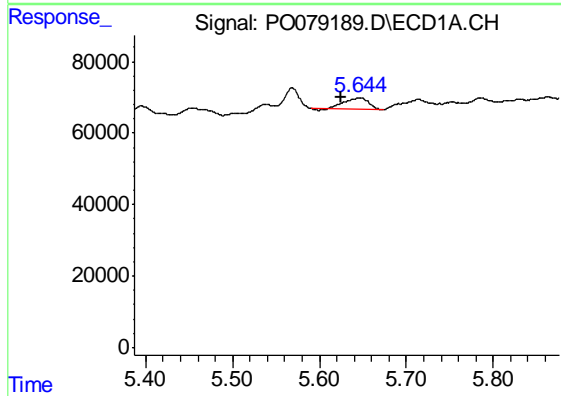
R.T.: 5.921 min
 Delta R.T.: 0.005 min
 Response: 39389
 Conc: 76.26 ng/ml

Instrument :
 ECD_O
 ClientSampleId :
 MW-02-OIL



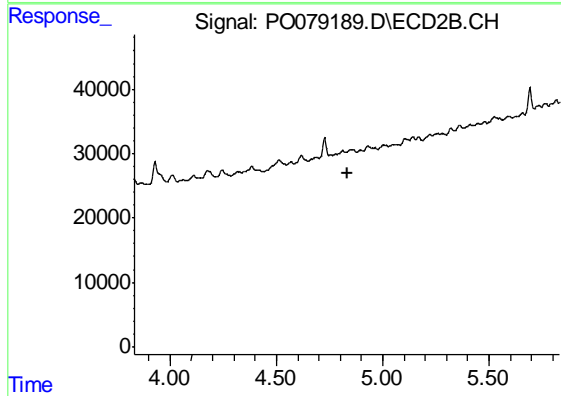
#15 AR-1232-5

R.T.: 0.000 min
 Exp R.T. : 5.315 min
 Response: 0
 Conc: N.D.



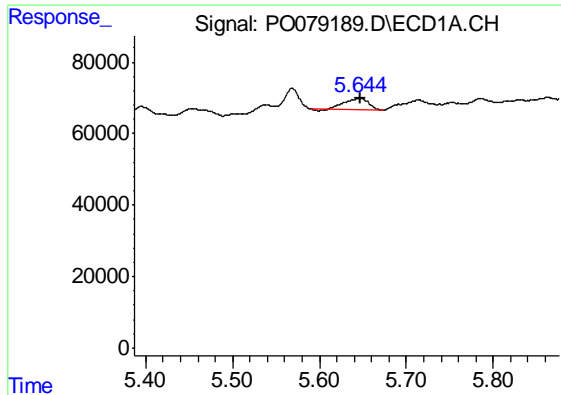
#16 AR-1242-1

R.T.: 5.646 min
 Delta R.T.: 0.021 min
 Response: 59541
 Conc: 30.01 ng/ml



#16 AR-1242-1

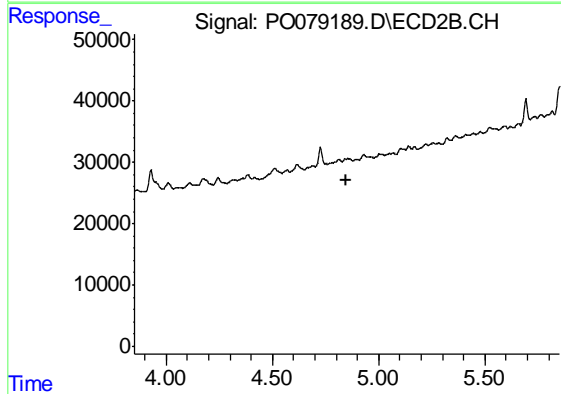
R.T.: 0.000 min
 Exp R.T. : 4.832 min
 Response: 0
 Conc: N.D.



#17 AR-1242-2

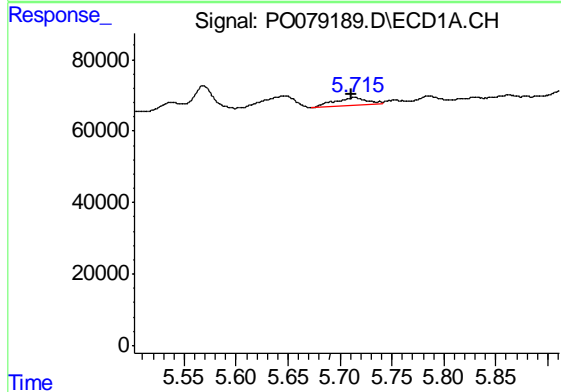
R.T.: 5.646 min
 Delta R.T.: 0.000 min
 Response: 59541
 Conc: 20.02 ng/ml

Instrument :
 ECD_O
 ClientSampleId :
 MW-02-OIL



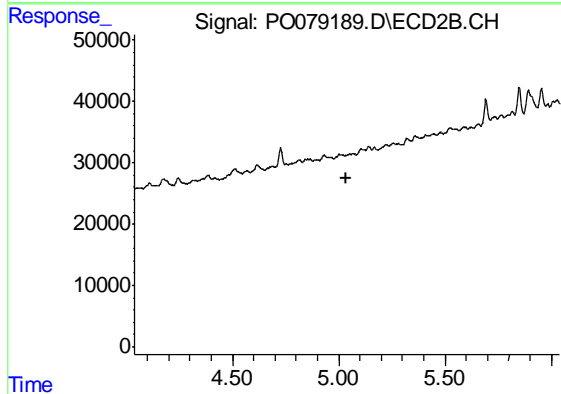
#17 AR-1242-2

R.T.: 0.000 min
 Exp R.T. : 4.851 min
 Response: 0
 Conc: N.D.



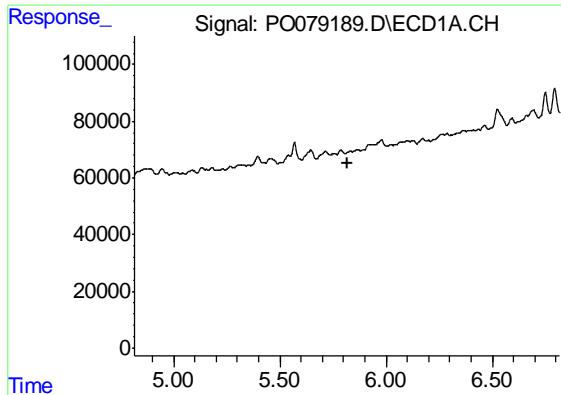
#18 AR-1242-3

R.T.: 5.714 min
 Delta R.T.: 0.002 min
 Response: 44691
 Conc: 24.15 ng/ml



#18 AR-1242-3

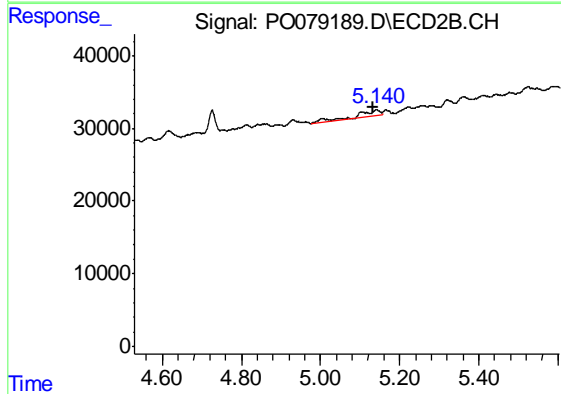
R.T.: 0.000 min
 Exp R.T. : 5.038 min
 Response: 0
 Conc: N.D.



#19 AR-1242-4

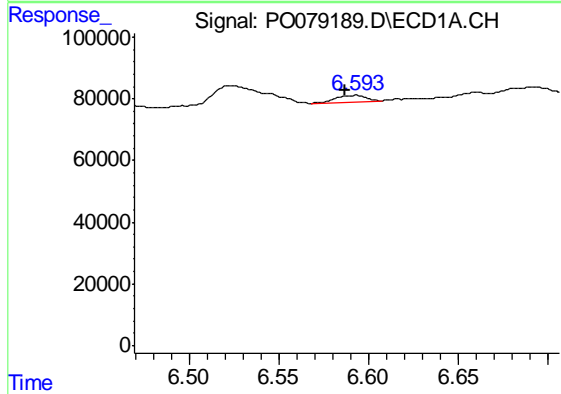
R.T.: 0.000 min
 Exp R.T. : 5.816 min
 Response: 0
 Conc: N.D.

Instrument :
 ECD_O
 ClientSampleId :
 MW-02-OIL



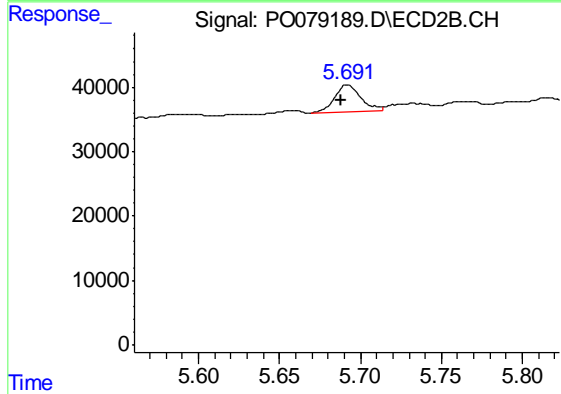
#19 AR-1242-4

R.T.: 5.141 min
 Delta R.T.: 0.007 min
 Response: 37650
 Conc: 61.51 ng/ml



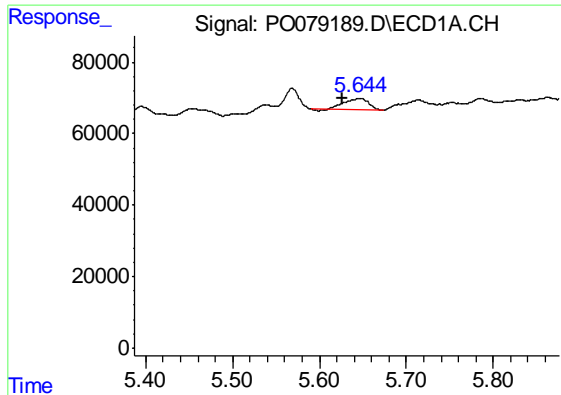
#20 AR-1242-5

R.T.: 6.592 min
 Delta R.T.: 0.005 min
 Response: 23608
 Conc: 15.28 ng/ml



#20 AR-1242-5

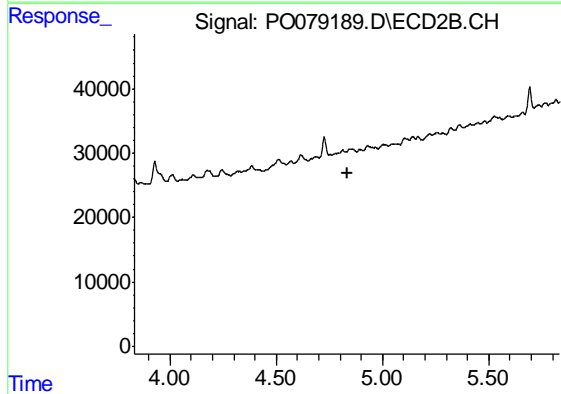
R.T.: 5.692 min
 Delta R.T.: 0.004 min
 Response: 46404
 Conc: 59.34 ng/ml



#21 AR-1248-1

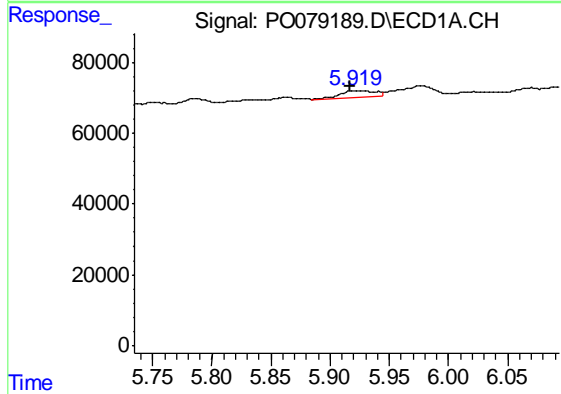
R.T.: 5.646 min
 Delta R.T.: 0.020 min
 Response: 59541
 Conc: 37.70 ng/ml

Instrument :
 ECD_O
 ClientSampleId :
 MW-02-OIL



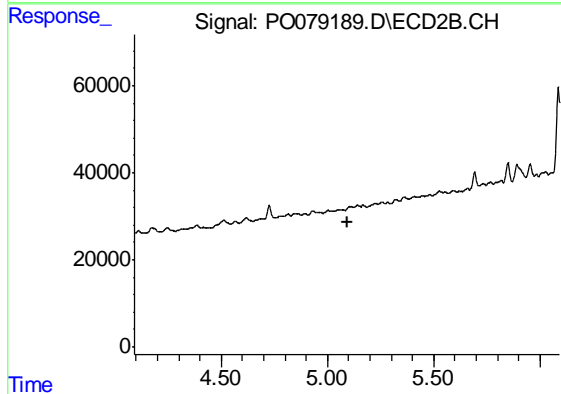
#21 AR-1248-1

R.T.: 0.000 min
 Exp R.T. : 4.833 min
 Response: 0
 Conc: N.D.



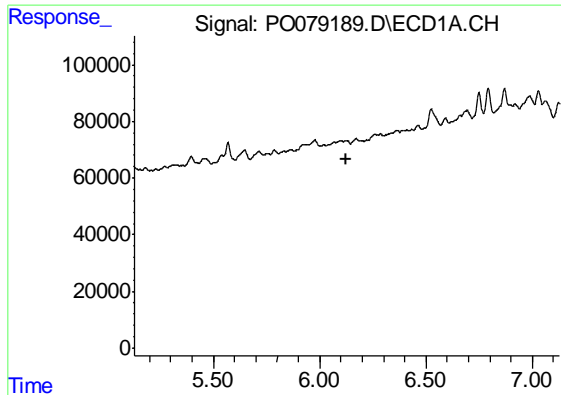
#22 AR-1248-2

R.T.: 5.921 min
 Delta R.T.: 0.004 min
 Response: 39389
 Conc: 17.80 ng/ml



#22 AR-1248-2

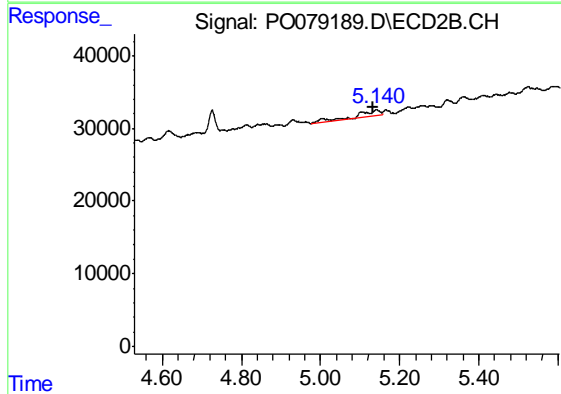
R.T.: 0.000 min
 Exp R.T. : 5.092 min
 Response: 0
 Conc: N.D.



#23 AR-1248-3

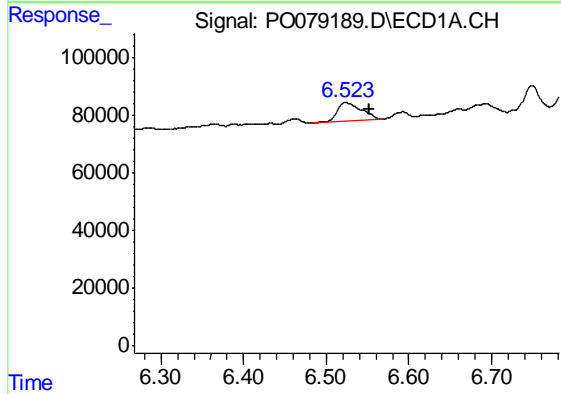
R.T.: 0.000 min
 Exp R.T. : 6.128 min
 Response: 0
 Conc: N.D.

Instrument :
 ECD_O
 ClientSampleId :
 MW-02-OIL



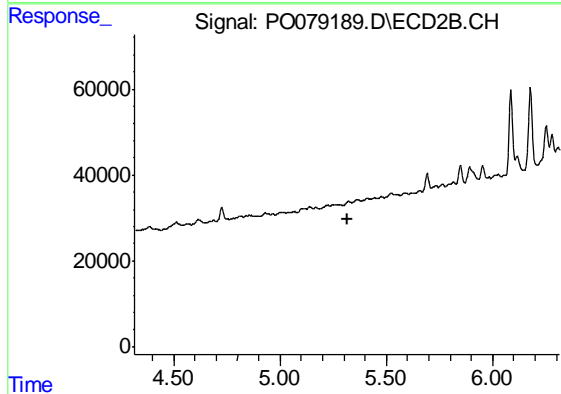
#23 AR-1248-3

R.T.: 5.141 min
 Delta R.T.: 0.007 min
 Response: 37650
 Conc: 37.92 ng/ml



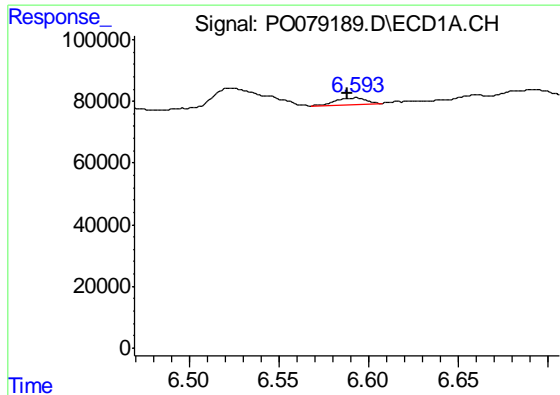
#24 AR-1248-4

R.T.: 6.524 min
 Delta R.T.: -0.028 min
 Response: 132900
 Conc: 47.95 ng/ml



#24 AR-1248-4

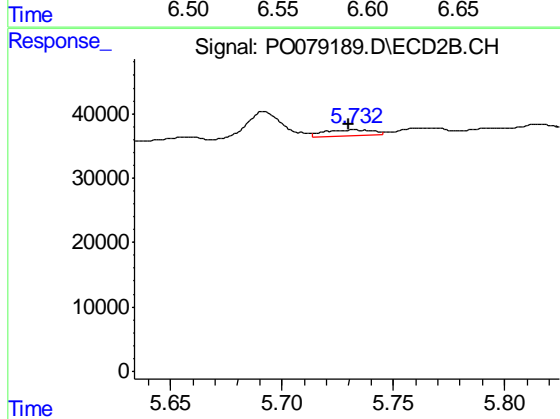
R.T.: 0.000 min
 Exp R.T. : 5.315 min
 Response: 0
 Conc: N.D.



#25 AR-1248-5

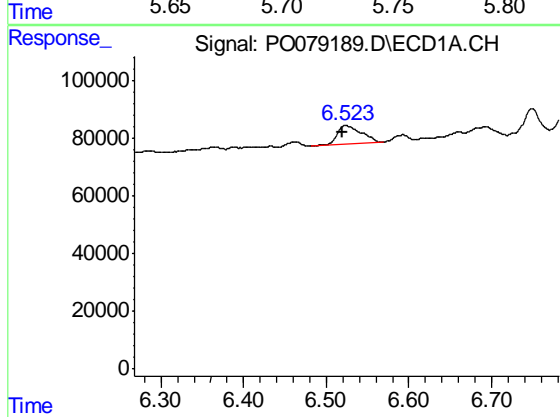
R.T.: 6.592 min
 Delta R.T.: 0.004 min
 Response: 23608
 Conc: 8.64 ng/ml

Instrument :
 ECD_O
 ClientSampled :
 MW-02-OIL



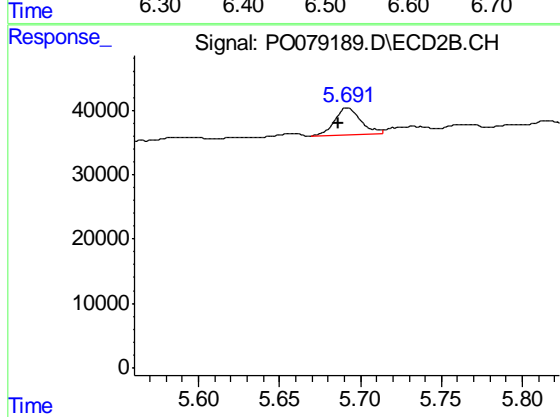
#25 AR-1248-5

R.T.: 5.733 min
 Delta R.T.: 0.002 min
 Response: 14334
 Conc: 13.31 ng/ml



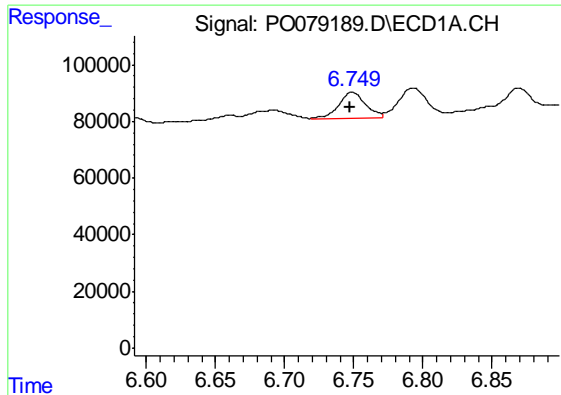
#26 AR-1254-1

R.T.: 6.524 min
 Delta R.T.: 0.005 min
 Response: 132900
 Conc: 49.34 ng/ml



#26 AR-1254-1

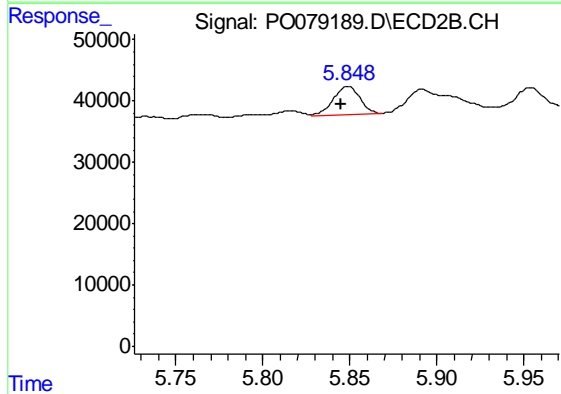
R.T.: 5.692 min
 Delta R.T.: 0.005 min
 Response: 46404
 Conc: 27.93 ng/ml



#27 AR-1254-2

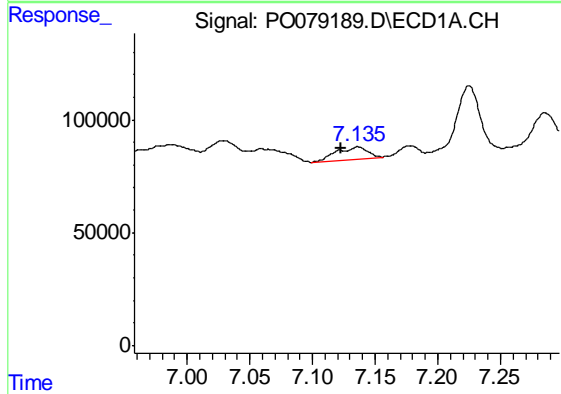
R.T.: 6.749 min
 Delta R.T.: 0.002 min
 Response: 123734
 Conc: 29.50 ng/ml

Instrument :
 ECD_O
 ClientSampleId :
 MW-02-OIL



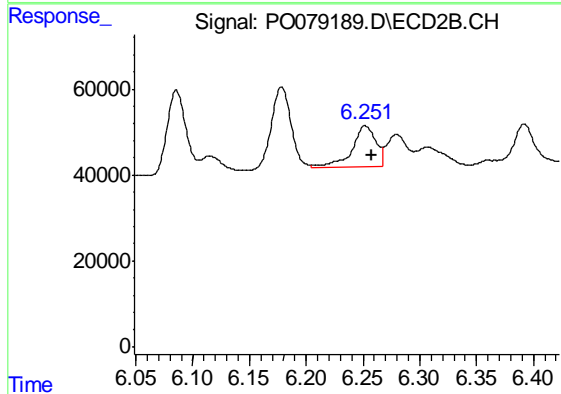
#27 AR-1254-2

R.T.: 5.849 min
 Delta R.T.: 0.004 min
 Response: 50952
 Conc: 34.57 ng/ml



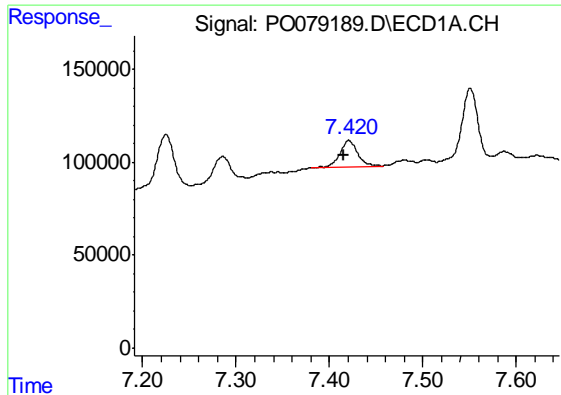
#28 AR-1254-3

R.T.: 7.136 min
 Delta R.T.: 0.014 min
 Response: 90691
 Conc: 20.36 ng/ml



#28 AR-1254-3

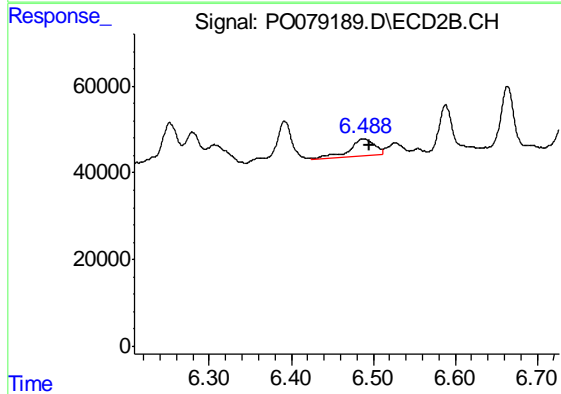
R.T.: 6.252 min
 Delta R.T.: -0.006 min
 Response: 141675
 Conc: 63.70 ng/ml



#29 AR-1254-4

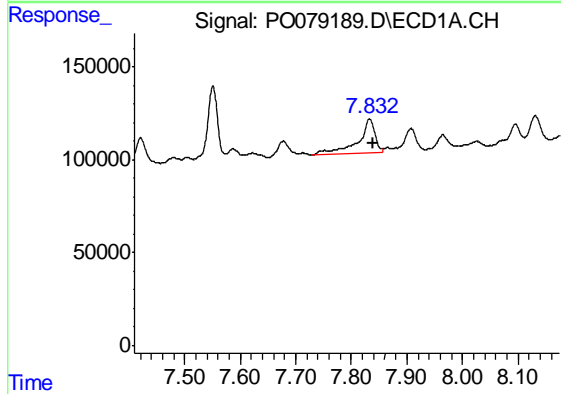
R.T.: 7.421 min
 Delta R.T.: 0.006 min
 Response: 184278
 Conc: 59.89 ng/ml

Instrument :
 ECD_O
 ClientSampleId :
 MW-02-OIL



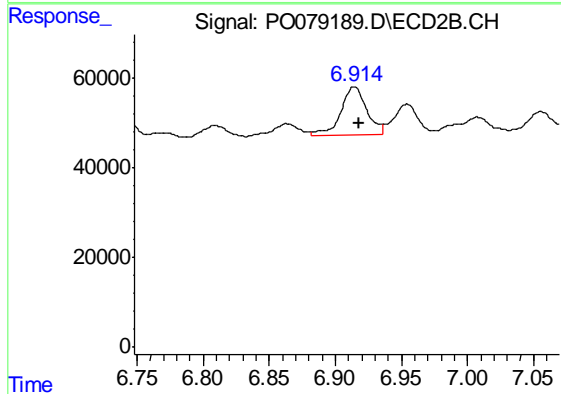
#29 AR-1254-4

R.T.: 6.489 min
 Delta R.T.: -0.007 min
 Response: 82948
 Conc: 61.01 ng/ml



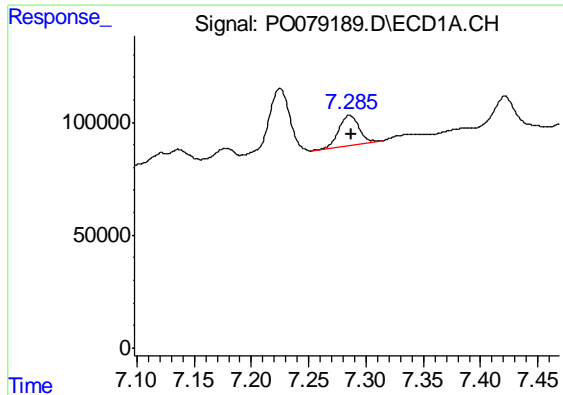
#30 AR-1254-5

R.T.: 7.833 min
 Delta R.T.: -0.005 min
 Response: 395449
 Conc: 121.14 ng/ml



#30 AR-1254-5

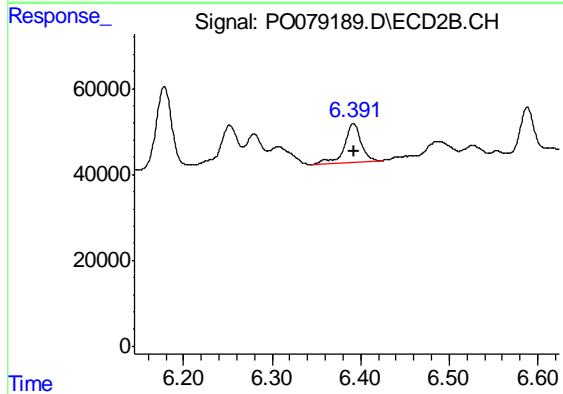
R.T.: 6.914 min
 Delta R.T.: -0.003 min
 Response: 144714
 Conc: 72.68 ng/ml



#31 AR-1260-1

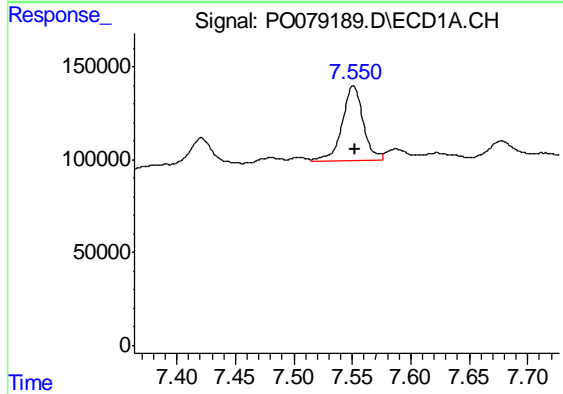
R.T.: 7.286 min
 Delta R.T.: -0.001 min
 Response: 163987
 Conc: 49.22 ng/ml

Instrument :
 ECD_O
 ClientSampleId :
 MW-02-OIL



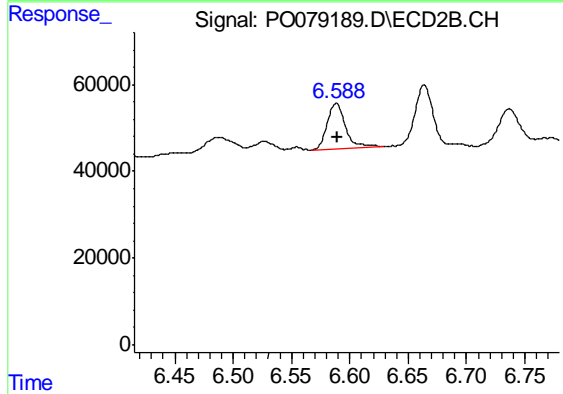
#31 AR-1260-1

R.T.: 6.392 min
 Delta R.T.: 0.000 min
 Response: 121332
 Conc: 74.96 ng/ml



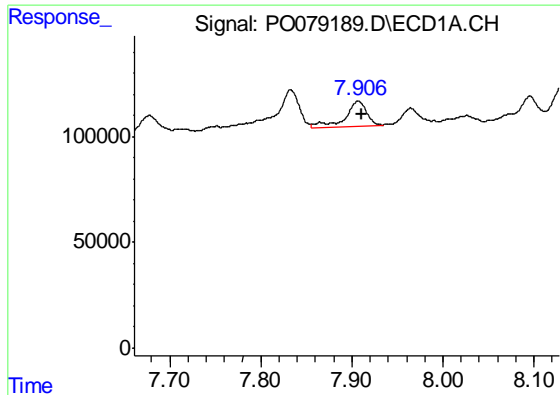
#32 AR-1260-2

R.T.: 7.551 min
 Delta R.T.: -0.001 min
 Response: 508516
 Conc: 130.84 ng/ml



#32 AR-1260-2

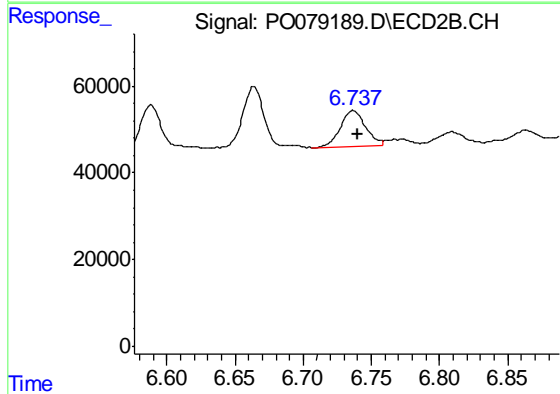
R.T.: 6.588 min
 Delta R.T.: -0.001 min
 Response: 113229
 Conc: 58.43 ng/ml



#33 AR-1260-3

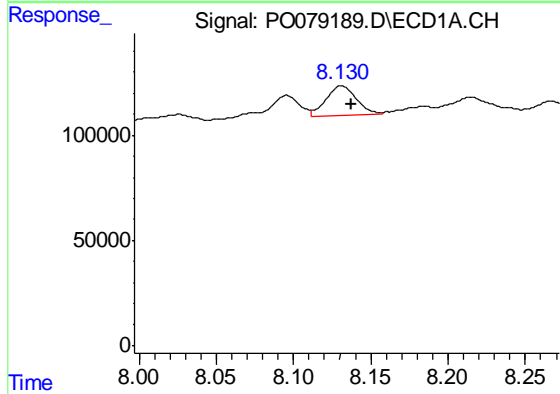
R.T.: 7.907 min
 Delta R.T.: -0.004 min
 Response: 192529
 Conc: 63.60 ng/ml

Instrument :
 ECD_O
 ClientSampleId :
 MW-02-OIL



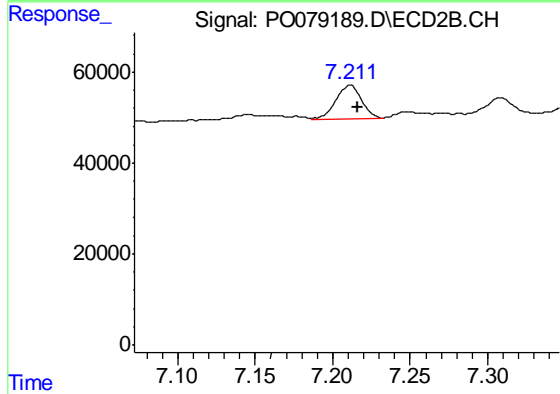
#33 AR-1260-3

R.T.: 6.737 min
 Delta R.T.: -0.003 min
 Response: 107027
 Conc: 58.13 ng/ml



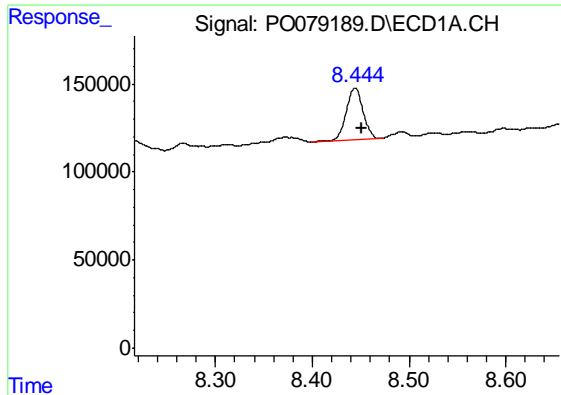
#34 AR-1260-4

R.T.: 8.131 min
 Delta R.T.: -0.007 min
 Response: 196493
 Conc: 60.01 ng/ml



#34 AR-1260-4

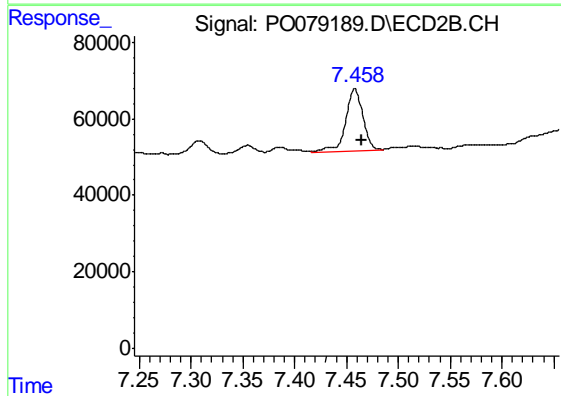
R.T.: 7.211 min
 Delta R.T.: -0.005 min
 Response: 84801
 Conc: 55.66 ng/ml



#35 AR-1260-5

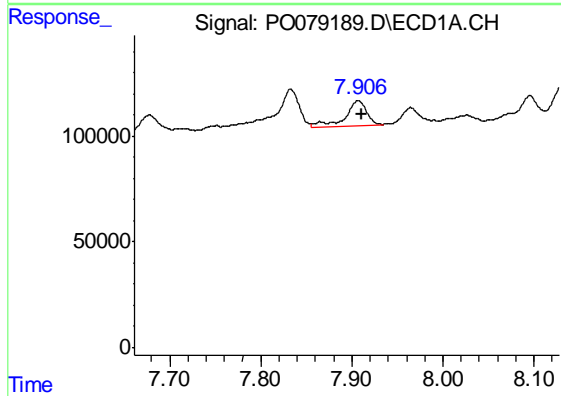
R.T.: 8.444 min
 Delta R.T.: -0.006 min
 Response: 366701
 Conc: 57.26 ng/ml

Instrument :
 ECD_O
 ClientSampleId :
 MW-02-OIL



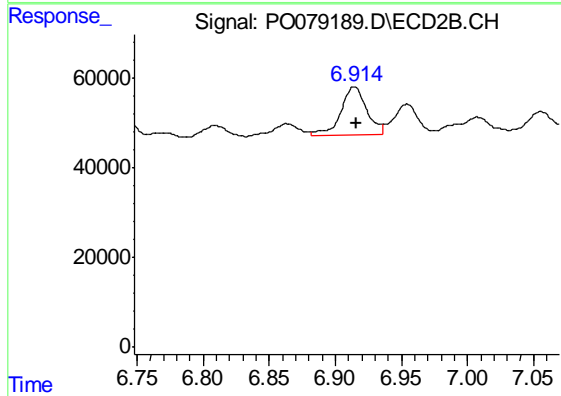
#35 AR-1260-5

R.T.: 7.458 min
 Delta R.T.: -0.006 min
 Response: 191609
 Conc: 54.11 ng/ml



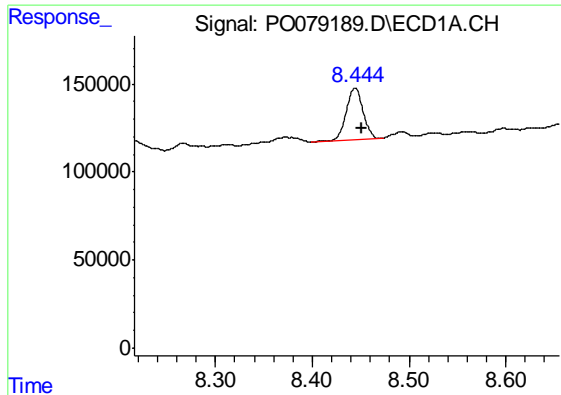
#36 AR-1262-1

R.T.: 7.907 min
 Delta R.T.: -0.004 min
 Response: 192529
 Conc: 46.86 ng/ml



#36 AR-1262-1

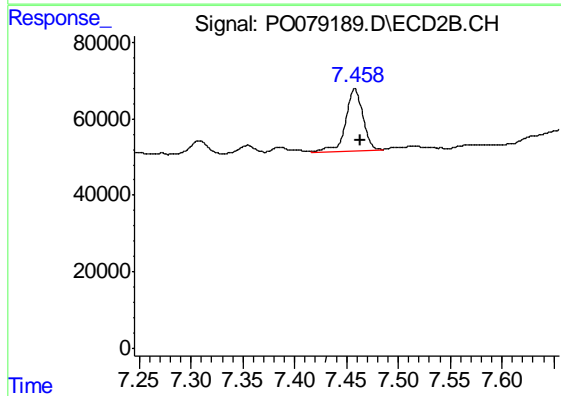
R.T.: 6.914 min
 Delta R.T.: -0.002 min
 Response: 144714
 Conc: 138.82 ng/ml



#37 AR-1262-2

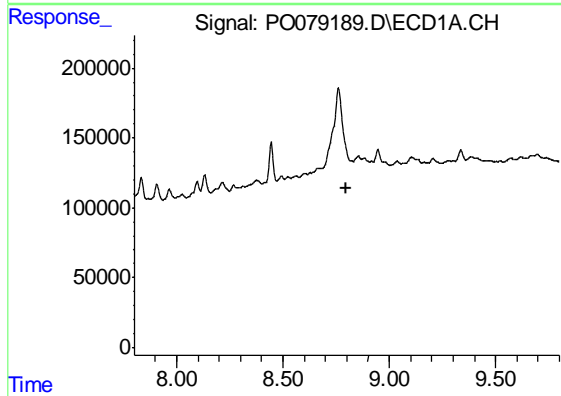
R.T.: 8.444 min
 Delta R.T.: -0.006 min
 Response: 366701
 Conc: 55.07 ng/ml

Instrument :
 ECD_O
 ClientSampleId :
 MW-02-OIL



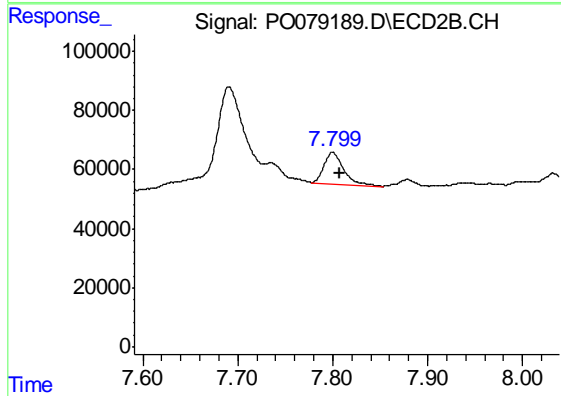
#37 AR-1262-2

R.T.: 7.458 min
 Delta R.T.: -0.005 min
 Response: 191609
 Conc: 54.30 ng/ml



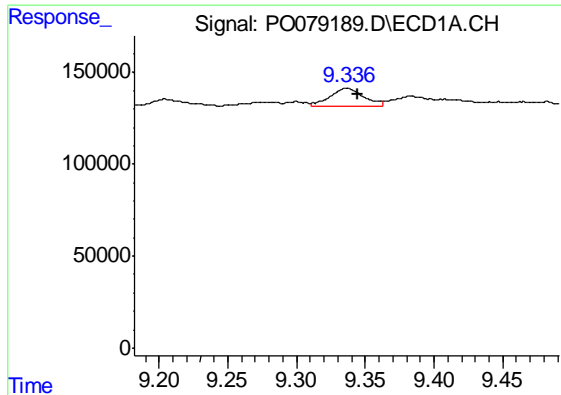
#39 AR-1262-4

R.T.: 0.000 min
 Exp R.T. : 8.801 min
 Response: 0
 Conc: N.D.



#39 AR-1262-4

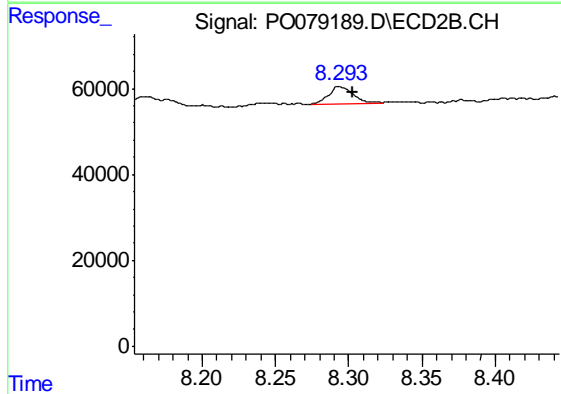
R.T.: 7.800 min
 Delta R.T.: -0.008 min
 Response: 153173
 Conc: 56.95 ng/ml



#40 AR-1262-5

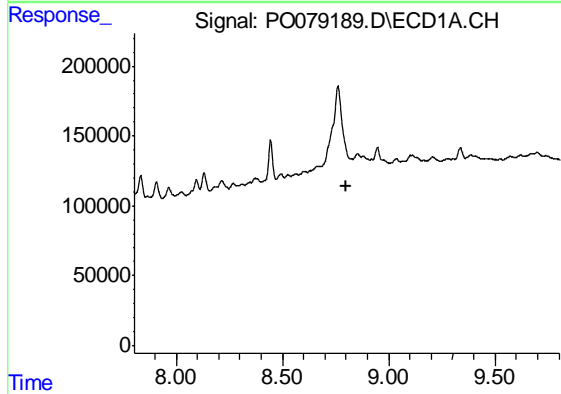
R.T.: 9.337 min
 Delta R.T.: -0.008 min
 Response: 162675
 Conc: 67.14 ng/ml

Instrument :
 ECD_O
 ClientSampleId :
 MW-02-OIL



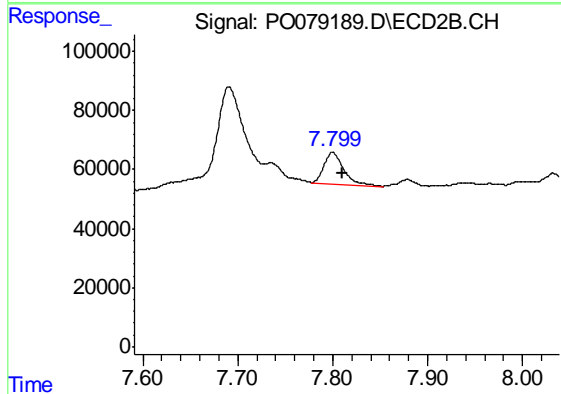
#40 AR-1262-5

R.T.: 8.294 min
 Delta R.T.: -0.009 min
 Response: 47015
 Conc: 38.82 ng/ml



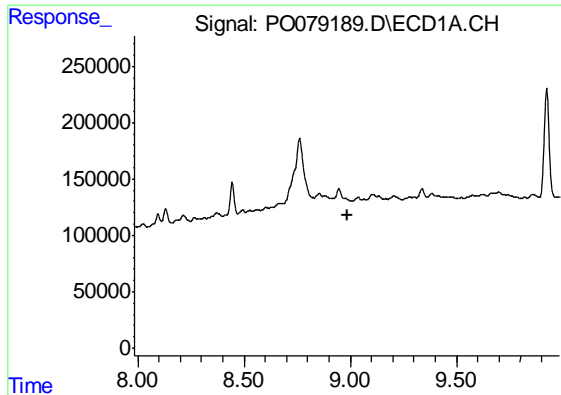
#42 AR-1268-2

R.T.: 0.000 min
 Exp R.T. : 8.803 min
 Response: 0
 Conc: N.D.



#42 AR-1268-2

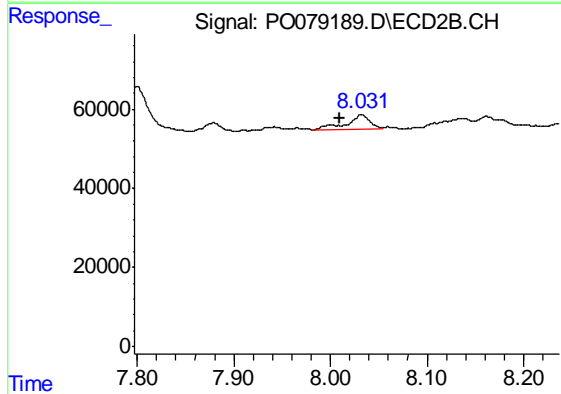
R.T.: 7.800 min
 Delta R.T.: -0.010 min
 Response: 153173
 Conc: 38.79 ng/ml



#43 AR-1268-3

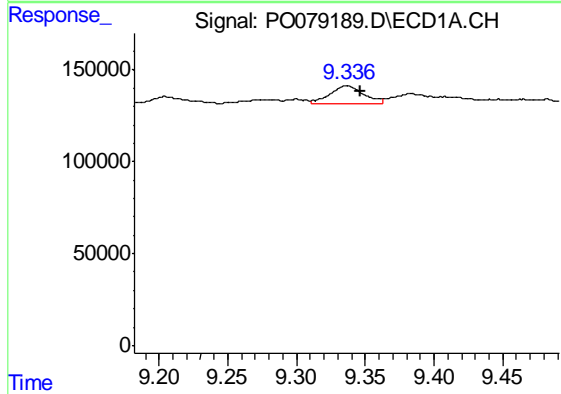
R.T.: 0.000 min
 Exp R.T. : 8.984 min
 Response: 0
 Conc: N.D.

Instrument :
 ECD_O
 ClientSampleId :
 MW-02-OIL



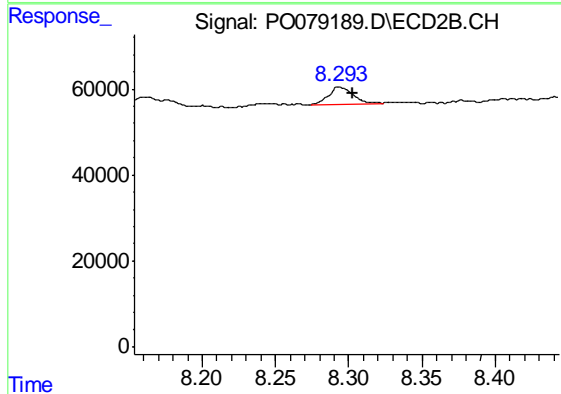
#43 AR-1268-3

R.T.: 8.032 min
 Delta R.T.: 0.022 min
 Response: 61650
 Conc: 18.11 ng/ml



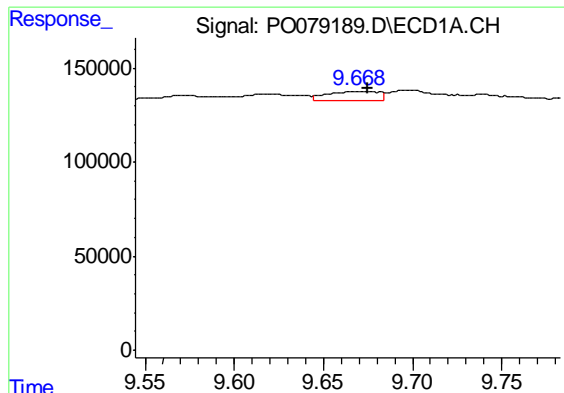
#44 AR-1268-4

R.T.: 9.337 min
 Delta R.T.: -0.010 min
 Response: 162675
 Conc: 63.20 ng/ml



#44 AR-1268-4

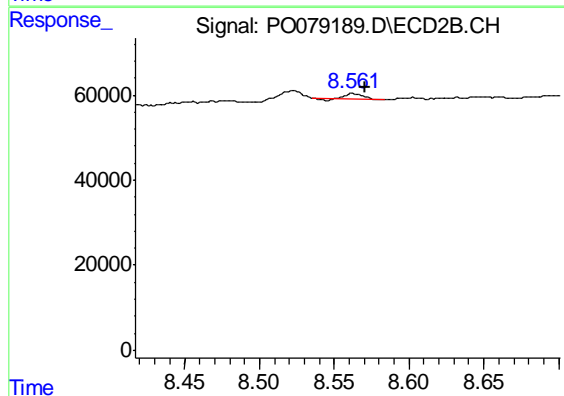
R.T.: 8.294 min
 Delta R.T.: -0.009 min
 Response: 47015
 Conc: 32.90 ng/ml



#45 AR-1268-5

R.T.: 9.669 min
Delta R.T.: -0.005 min
Response: 94969
Conc: 4.74 ng/ml

Instrument :
ECD_O
ClientSampleId :
MW-02-OIL



#45 AR-1268-5

R.T.: 8.562 min
Delta R.T.: -0.008 min
Response: 9182
Conc: 0.89 ng/ml