

Data Path : Z:\pestpcbsrv\HPCHEM1\ECD_0\Data\P0062521\
 Data File : P0079191.D
 Signal(s) : Signal #1: ECD1A.CH Signal #2: ECD2B.CH
 Acq On : 26 Jun 2021 4:37
 Operator : DD\AJ
 Sample : M2847-04
 Misc :
 ALS Vial : 42 Sample Multiplier: 1

Instrument :
 ECD_0
 ClientSampleId :
 1962-1964

Integration File signal 1: autoint1.e
 Integration File signal 2: autoint2.e
 Quant Time: Jun 28 02:13:58 2021
 Quant Method : Z:\pestpcbsrv\HPCHEM1\ECD_0\methods\P0061921.M
 Quant Title : GC EXTRACTABLES
 QLast Update : Sun Jun 20 03:02:02 2021
 Response via : Initial Calibration
 Integrator: ChemStation 6890 Scale Mode: Small noise peaks clipped

Volume Inj. : 2 µl
 Signal #1 Phase : ZB-MR1 Signal #2 Phase: ZB-MR2
 Signal #1 Info : 30Mx0.32mmx 0.50µ Signal #2 Info : 30M x 0.32mm x 0.25µm

Compound	RT#1	RT#2	Resp#1	Resp#2	ng/ml	ng/ml

System Monitoring Compounds						
1) SA Tetrachlo...	4.328	3.601	1398114	566914	17.715	19.075
2) SA Decachlor...	9.925	8.777	1054899	472585	16.891	15.859
Target Compounds						
5) L1 AR-1016-3	5.716	0.000	80606	0	32.089	N.D. #
8) L2 AR-1221-1	4.572	0.000	182272	0	219.249	N.D. #
9) L2 AR-1221-2	4.670	0.000	13463	0	22.102	N.D. #
15) L3 AR-1232-5	5.921	0.000	4802	0	9.296	N.D. #
18) L4 AR-1242-3	5.716	0.000	80606	0	43.556	N.D. #
20) L4 AR-1242-5	6.589	0.000	53279	0	34.485	N.D. #
22) L5 AR-1248-2	5.921	0.000	4802	0	2.171	N.D. #
24) L5 AR-1248-4	6.528f	0.000	43665	0	15.754	N.D. #
25) L5 AR-1248-5	6.589	0.000	53279	0	19.501	N.D. #
26) L6 AR-1254-1	6.528	0.000	43665	0	16.211	N.D. #
27) L6 AR-1254-2	6.752	0.000	19501	0	4.649	N.D. #
28) L6 AR-1254-3	7.108	6.240f	12106	18280	2.718	8.219 #
29) L6 AR-1254-4	7.419	0.000	44449	0	14.446	N.D. #
30) L6 AR-1254-5	7.823f	0.000	25481	0	7.806	N.D. #
32) L7 AR-1260-2	7.549	6.585	47106	2830	12.120	1.460 #
33) L7 AR-1260-3	7.907	6.739	14453	16318	4.774	8.862 #
34) L7 AR-1260-4	0.000	7.211	0	20868	N.D.	13.698 #
35) L7 AR-1260-5	0.000	7.472	0	10662	N.D.	3.011 #
36) L8 AR-1262-1	7.907	0.000	14453	0	3.518	N.D. #
37) L8 AR-1262-2	0.000	7.472	0	10662	N.D.	3.021 #
39) L8 AR-1262-4	8.796	0.000	11372	0	3.055	N.D. #
40) L8 AR-1262-5	9.357	0.000	42456	0	17.523	N.D. #
42) L9 AR-1268-2	8.796	0.000	11372	0	1.521	N.D. #
44) L9 AR-1268-4	9.357	0.000	42456	0	16.495	N.D. #
45) L9 AR-1268-5	9.687	0.000	4091	0	0.204	N.D. #

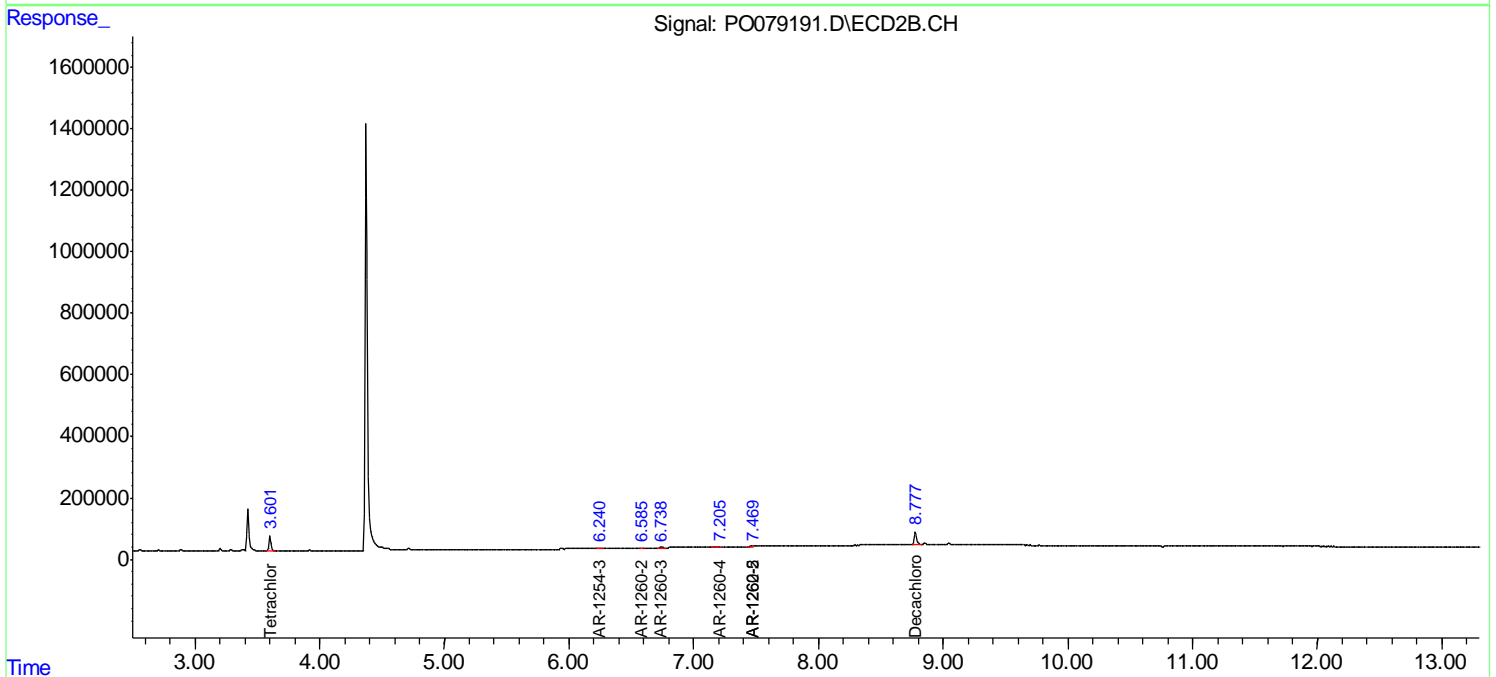
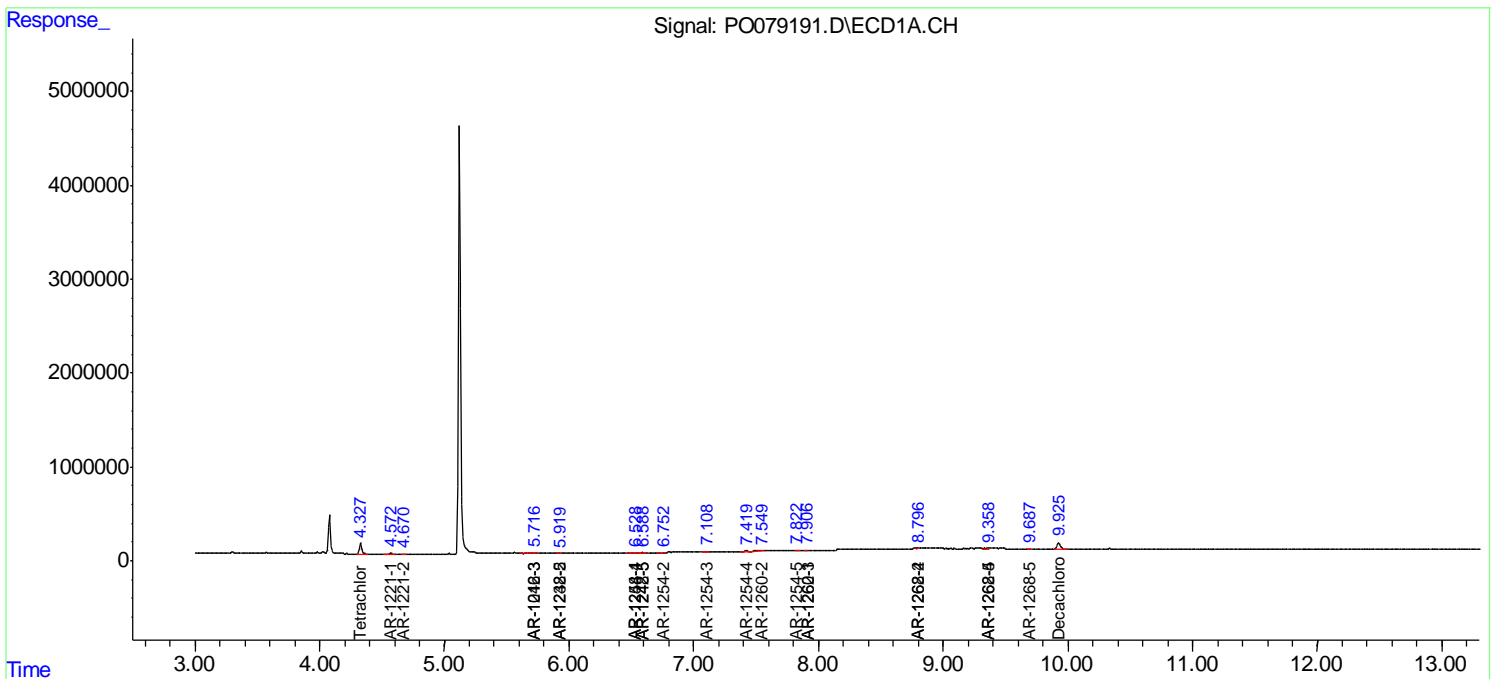
(f)=RT Delta > 1/2 Window (#)=Amounts differ by > 25% (m)=manual int.

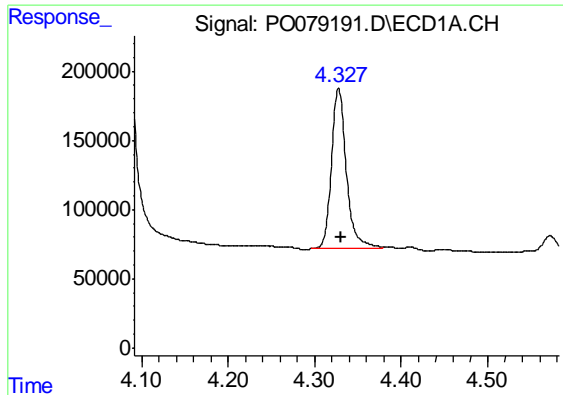
Data Path : Z:\pestpcbsrv\HPCHEM1\ECD_O\Data\P0062521\
 Data File : P0079191.D
 Signal(s) : Signal #1: ECD1A.CH Signal #2: ECD2B.CH
 Acq On : 26 Jun 2021 4:37
 Operator : DD\AJ
 Sample : M2847-04
 Misc :
 ALS Vial : 42 Sample Multiplier: 1

Instrument :
 ECD_O
 ClientSampled :
 1962-1964

Integration File signal 1: autoint1.e
 Integration File signal 2: autoint2.e
 Quant Time: Jun 28 02:13:58 2021
 Quant Method : Z:\pestpcbsrv\HPCHEM1\ECD_O\methods\P0061921.M
 Quant Title : GC EXTRACTABLES
 QLast Update : Sun Jun 20 03:02:02 2021
 Response via : Initial Calibration
 Integrator: ChemStation 6890 Scale Mode: Small noise peaks clipped

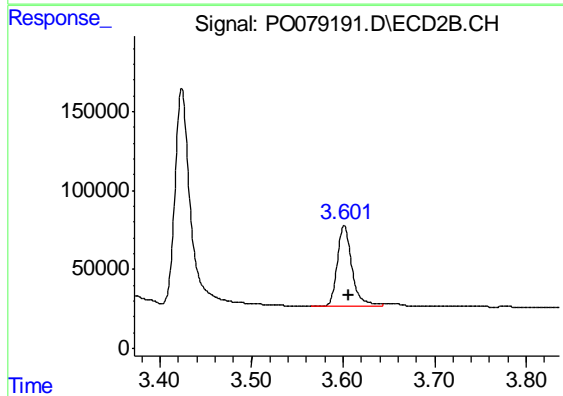
Volume Inj. : 2 µl
 Signal #1 Phase : ZB-MR1 Signal #2 Phase: ZB-MR2
 Signal #1 Info : 30Mx0.32mmx 0.50µ Signal #2 Info : 30M x 0.32mm x 0.25µm



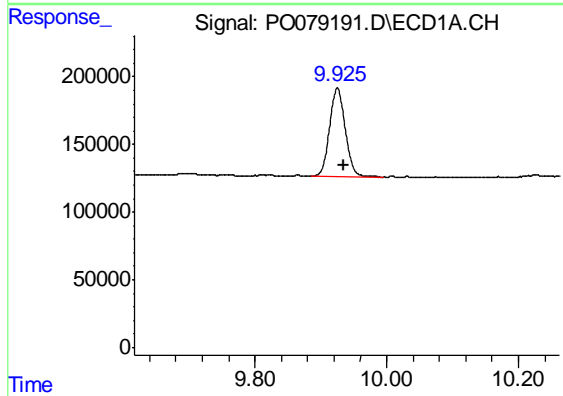


#1 Tetrachloro-m-xylene
 R.T.: 4.328 min
 Delta R.T.: -0.002 min
 Response: 1398114
 Conc: 17.72 ng/ml

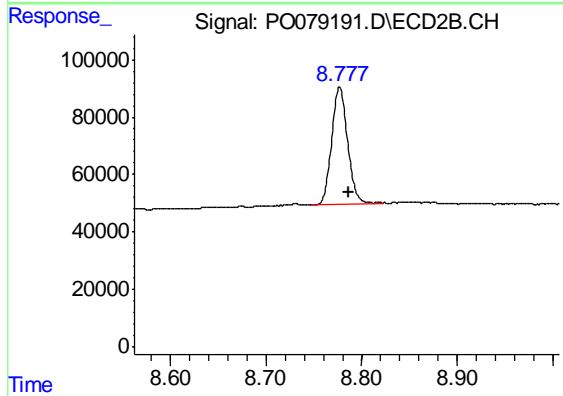
Instrument :
 ECD_O
 ClientSampleId :
 1962-1964



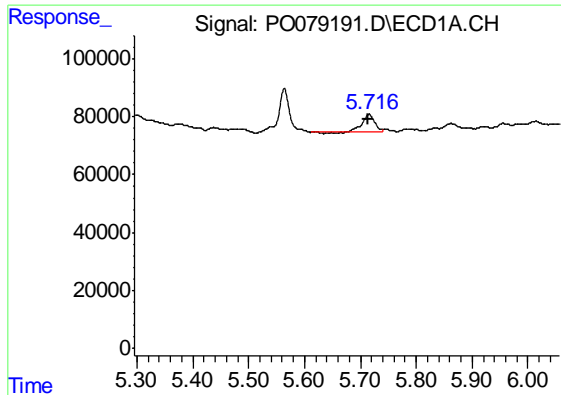
#1 Tetrachloro-m-xylene
 R.T.: 3.601 min
 Delta R.T.: -0.005 min
 Response: 566914
 Conc: 19.07 ng/ml



#2 Decachlorobiphenyl
 R.T.: 9.925 min
 Delta R.T.: -0.010 min
 Response: 1054899
 Conc: 16.89 ng/ml



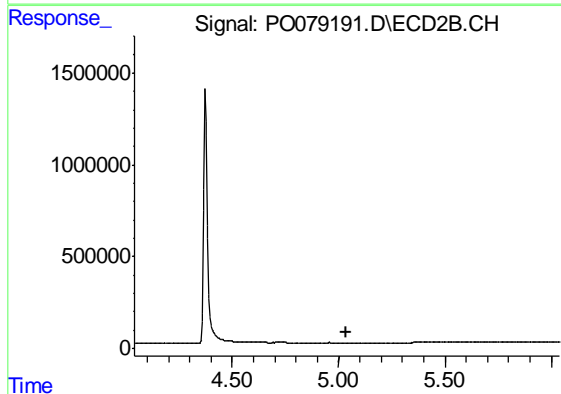
#2 Decachlorobiphenyl
 R.T.: 8.777 min
 Delta R.T.: -0.010 min
 Response: 472585
 Conc: 15.86 ng/ml



#5 AR-1016-3

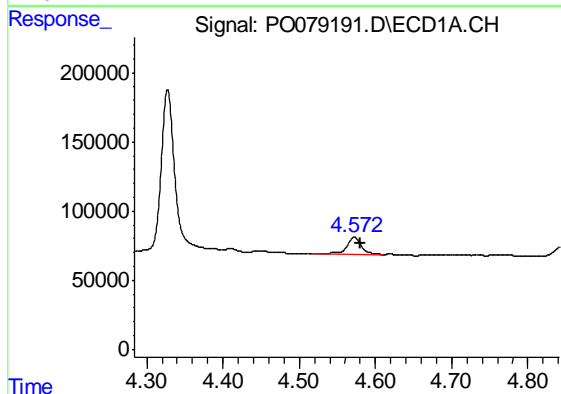
R.T.: 5.716 min
 Delta R.T.: 0.003 min
 Response: 80606
 Conc: 32.09 ng/ml

Instrument :
 ECD_O
 ClientSampleId :
 1962-1964



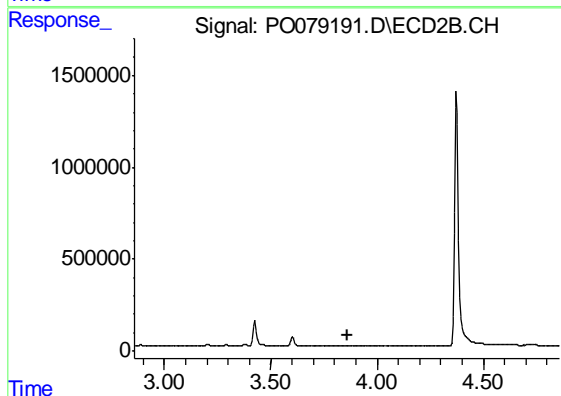
#5 AR-1016-3

R.T.: 0.000 min
 Exp R.T. : 5.039 min
 Response: 0
 Conc: N.D.



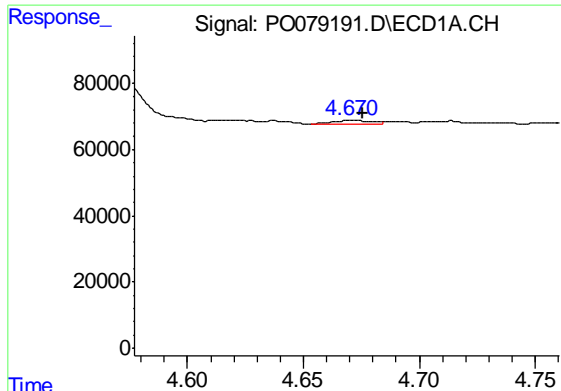
#8 AR-1221-1

R.T.: 4.572 min
 Delta R.T.: -0.008 min
 Response: 182272
 Conc: 219.25 ng/ml



#8 AR-1221-1

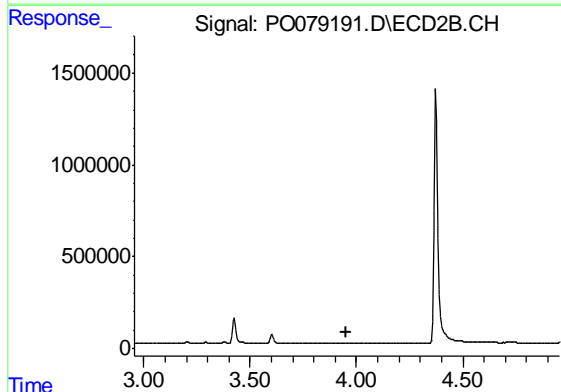
R.T.: 0.000 min
 Exp R.T. : 3.858 min
 Response: 0
 Conc: N.D.



#9 AR-1221-2

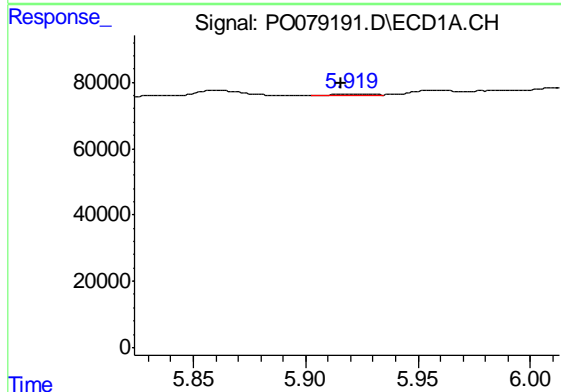
R.T.: 4.670 min
 Delta R.T.: -0.005 min
 Response: 13463
 Conc: 22.10 ng/ml

Instrument :
 ECD_O
 ClientSampleId :
 1962-1964



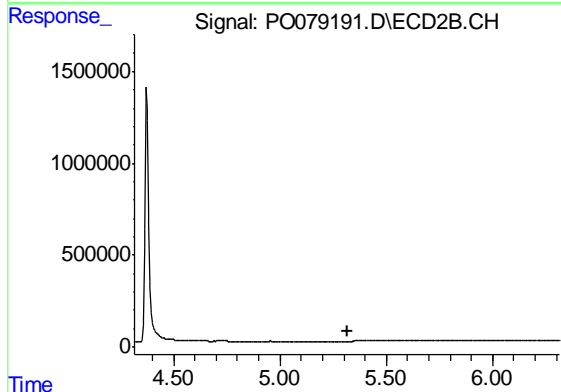
#9 AR-1221-2

R.T.: 0.000 min
 Exp R.T. : 3.955 min
 Response: 0
 Conc: N.D.



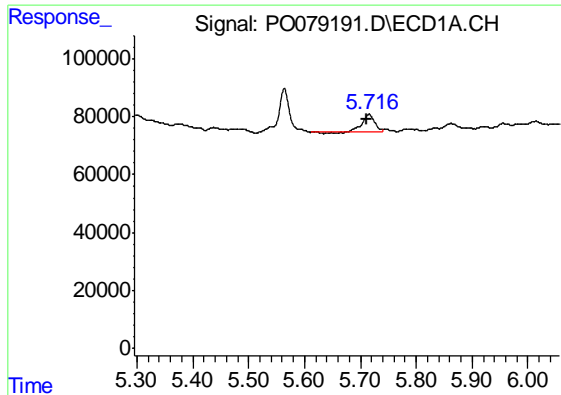
#15 AR-1232-5

R.T.: 5.921 min
 Delta R.T.: 0.005 min
 Response: 4802
 Conc: 9.30 ng/ml



#15 AR-1232-5

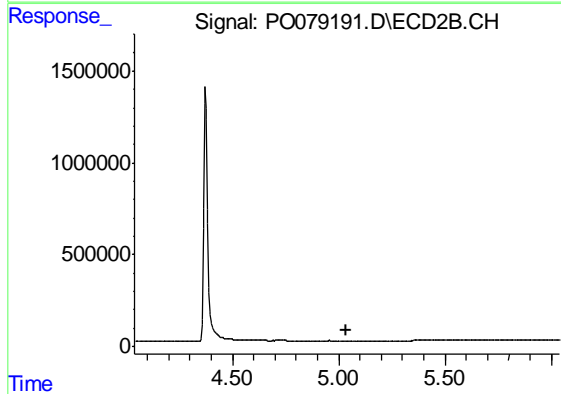
R.T.: 0.000 min
 Exp R.T. : 5.315 min
 Response: 0
 Conc: N.D.



#18 AR-1242-3

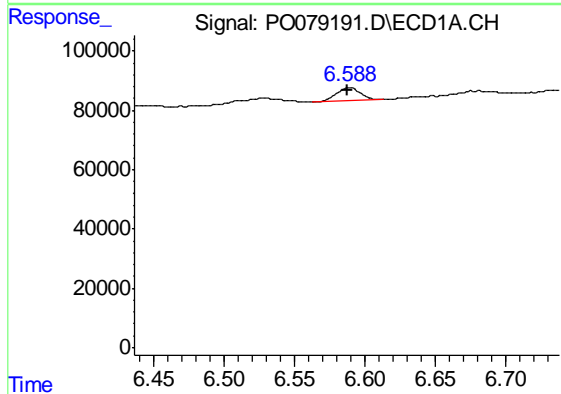
R.T.: 5.716 min
 Delta R.T.: 0.004 min
 Response: 80606
 Conc: 43.56 ng/ml

Instrument :
 ECD_O
 ClientSampleId :
 1962-1964



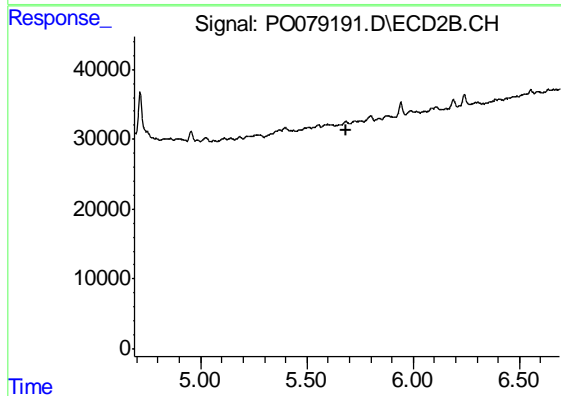
#18 AR-1242-3

R.T.: 0.000 min
 Exp R.T. : 5.038 min
 Response: 0
 Conc: N.D.



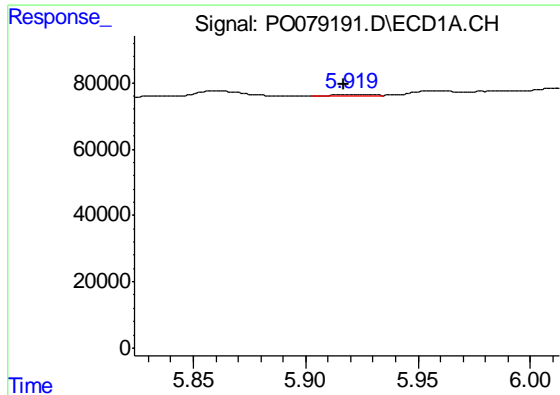
#20 AR-1242-5

R.T.: 6.589 min
 Delta R.T.: 0.002 min
 Response: 53279
 Conc: 34.49 ng/ml



#20 AR-1242-5

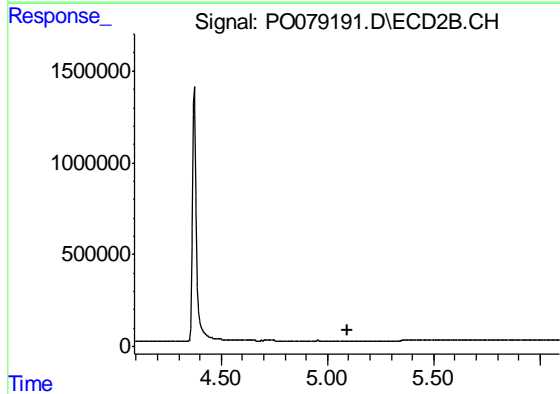
R.T.: 0.000 min
 Exp R.T. : 5.688 min
 Response: 0
 Conc: N.D.



#22 AR-1248-2

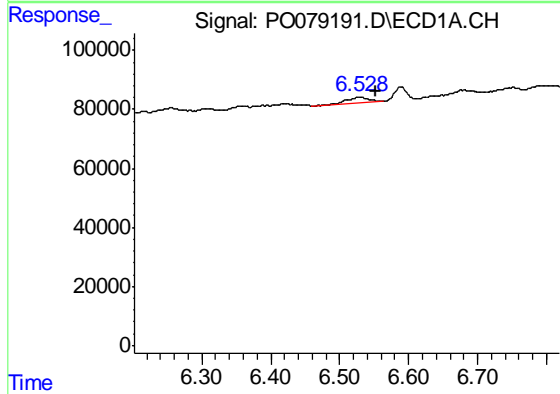
R.T.: 5.921 min
 Delta R.T.: 0.004 min
 Response: 4802
 Conc: 2.17 ng/ml

Instrument :
 ECD_O
 ClientSampleId :
 1962-1964



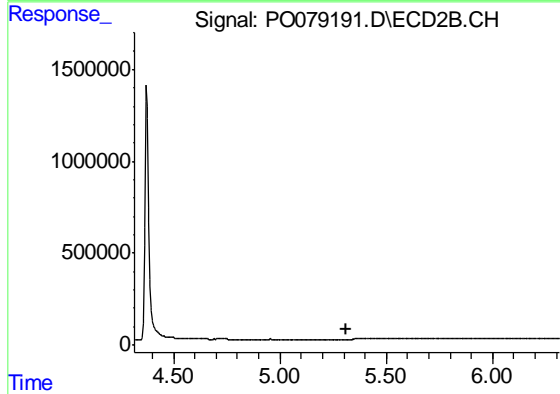
#22 AR-1248-2

R.T.: 0.000 min
 Exp R.T. : 5.092 min
 Response: 0
 Conc: N.D.



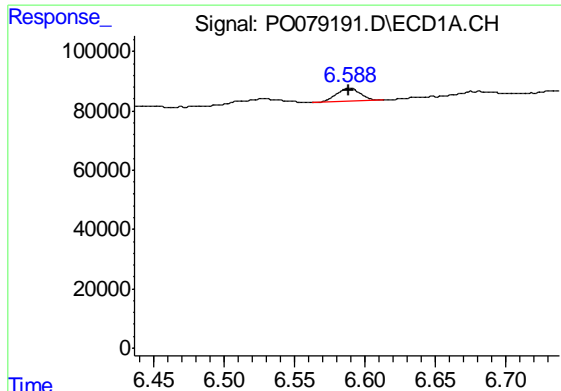
#24 AR-1248-4

R.T.: 6.528 min
 Delta R.T.: -0.023 min
 Response: 43665
 Conc: 15.75 ng/ml



#24 AR-1248-4

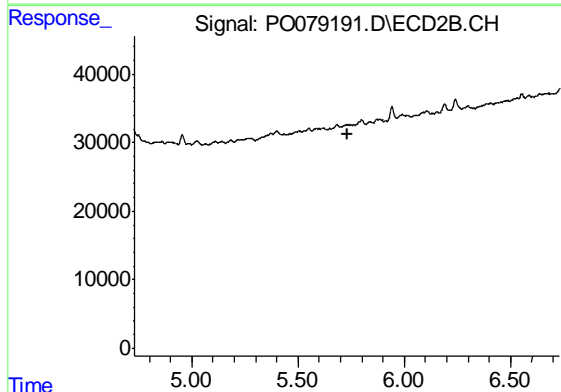
R.T.: 0.000 min
 Exp R.T. : 5.315 min
 Response: 0
 Conc: N.D.



#25 AR-1248-5

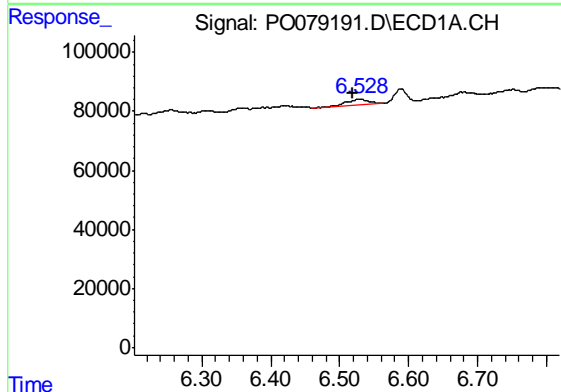
R.T.: 6.589 min
 Delta R.T.: 0.000 min
 Response: 53279
 Conc: 19.50 ng/ml

Instrument :
 ECD_O
 ClientSampleId :
 1962-1964



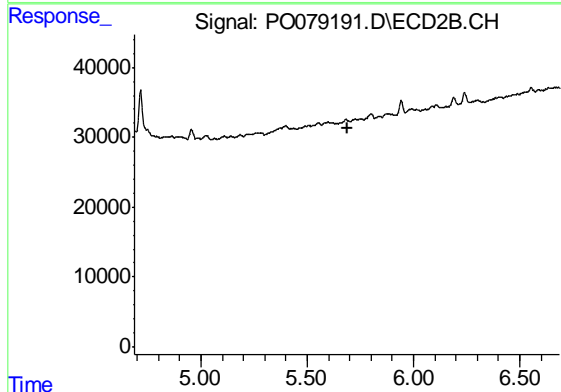
#25 AR-1248-5

R.T.: 0.000 min
 Exp R.T. : 5.730 min
 Response: 0
 Conc: N.D.



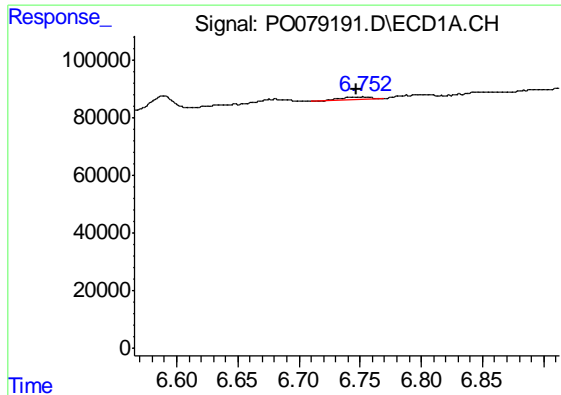
#26 AR-1254-1

R.T.: 6.528 min
 Delta R.T.: 0.009 min
 Response: 43665
 Conc: 16.21 ng/ml



#26 AR-1254-1

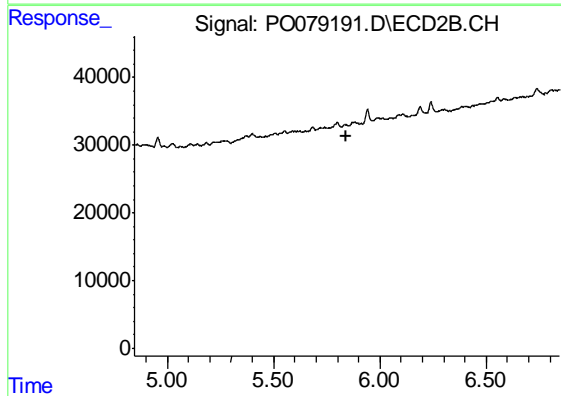
R.T.: 0.000 min
 Exp R.T. : 5.687 min
 Response: 0
 Conc: N.D.



#27 AR-1254-2

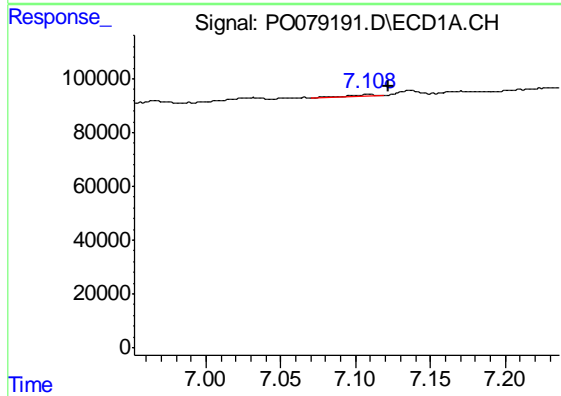
R.T.: 6.752 min
 Delta R.T.: 0.005 min
 Response: 19501
 Conc: 4.65 ng/ml

Instrument :
 ECD_O
 ClientSampleId :
 1962-1964



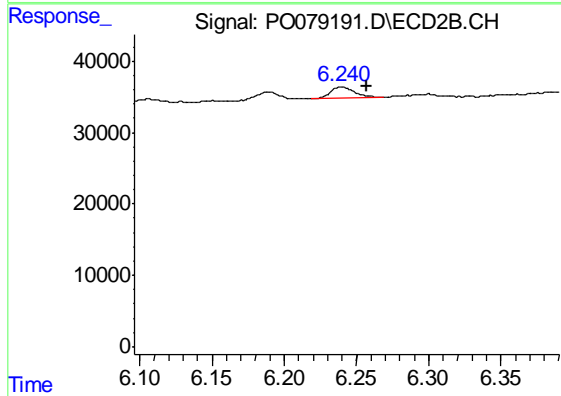
#27 AR-1254-2

R.T.: 0.000 min
 Exp R.T. : 5.845 min
 Response: 0
 Conc: N.D.



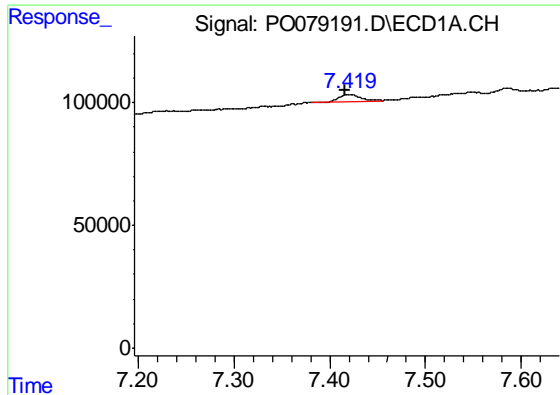
#28 AR-1254-3

R.T.: 7.108 min
 Delta R.T.: -0.014 min
 Response: 12106
 Conc: 2.72 ng/ml



#28 AR-1254-3

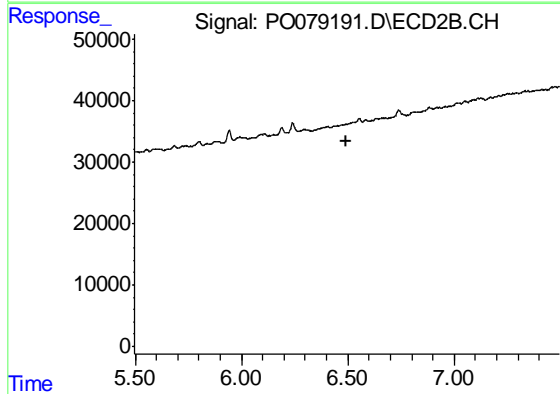
R.T.: 6.240 min
 Delta R.T.: -0.018 min
 Response: 18280
 Conc: 8.22 ng/ml



#29 AR-1254-4

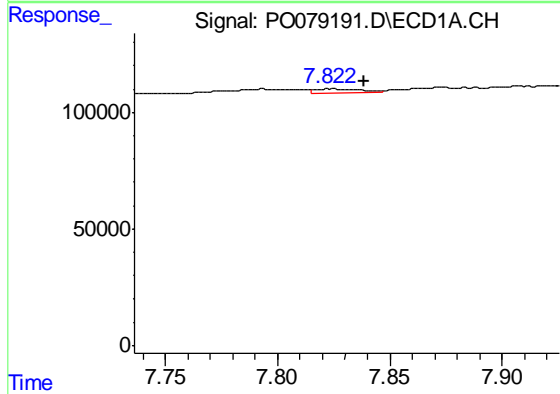
R.T.: 7.419 min
 Delta R.T.: 0.004 min
 Response: 44449
 Conc: 14.45 ng/ml

Instrument :
 ECD_O
 ClientSampleId :
 1962-1964



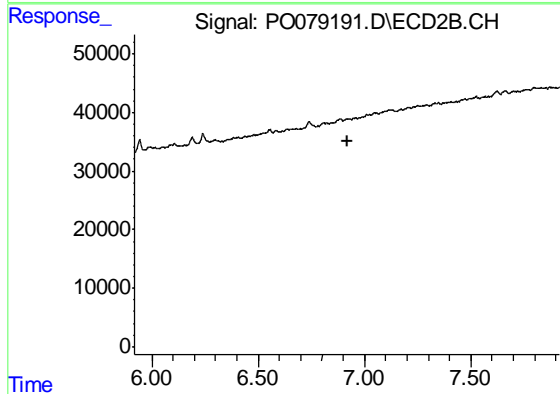
#29 AR-1254-4

R.T.: 0.000 min
 Exp R.T. : 6.495 min
 Response: 0
 Conc: N.D.



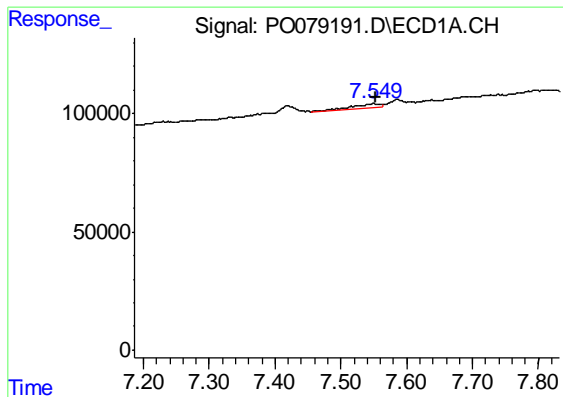
#30 AR-1254-5

R.T.: 7.823 min
 Delta R.T.: -0.015 min
 Response: 25481
 Conc: 7.81 ng/ml



#30 AR-1254-5

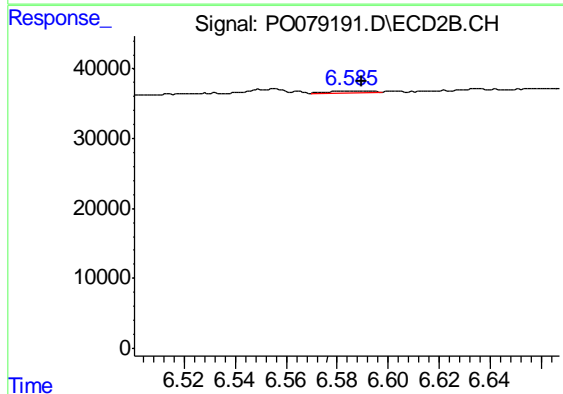
R.T.: 0.000 min
 Exp R.T. : 6.918 min
 Response: 0
 Conc: N.D.



#32 AR-1260-2

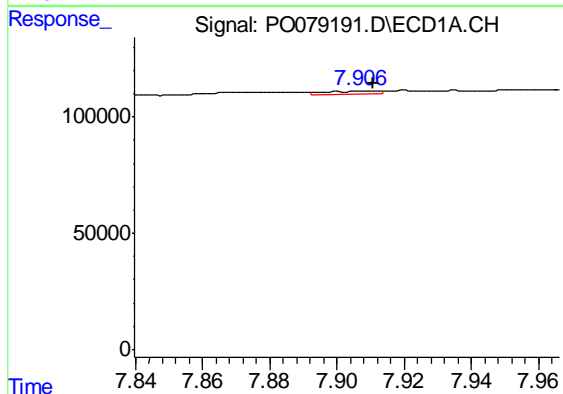
R.T.: 7.549 min
 Delta R.T.: -0.003 min
 Response: 47106
 Conc: 12.12 ng/ml

Instrument :
 ECD_O
 ClientSampleId :
 1962-1964



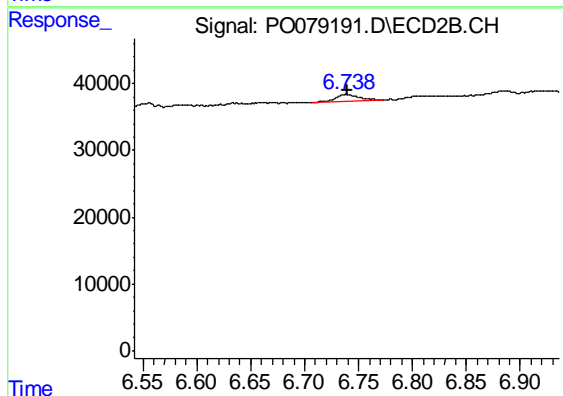
#32 AR-1260-2

R.T.: 6.585 min
 Delta R.T.: -0.004 min
 Response: 2830
 Conc: 1.46 ng/ml



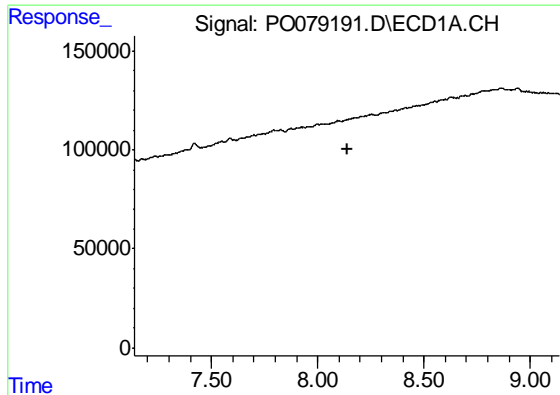
#33 AR-1260-3

R.T.: 7.907 min
 Delta R.T.: -0.003 min
 Response: 14453
 Conc: 4.77 ng/ml



#33 AR-1260-3

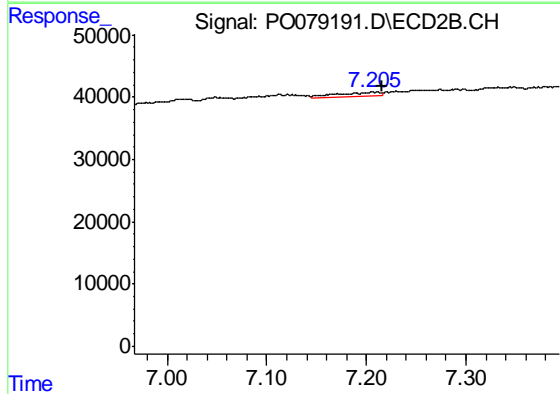
R.T.: 6.739 min
 Delta R.T.: -0.001 min
 Response: 16318
 Conc: 8.86 ng/ml



#34 AR-1260-4

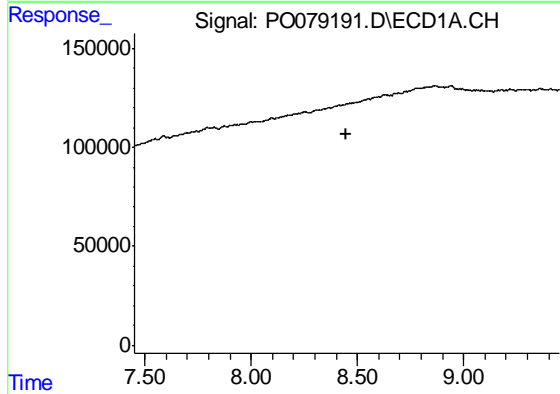
R.T.: 0.000 min
 Exp R.T. : 8.138 min
 Response: 0
 Conc: N.D.

Instrument :
 ECD_O
 ClientSampleId :
 1962-1964



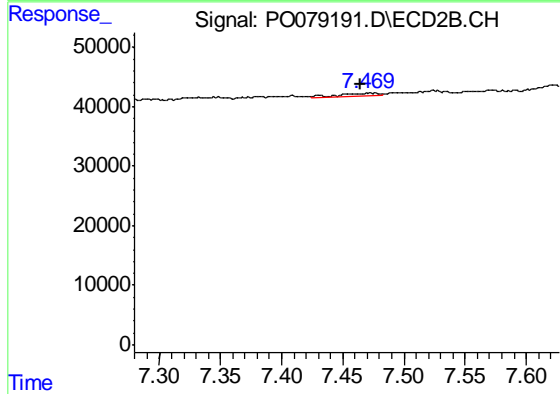
#34 AR-1260-4

R.T.: 7.211 min
 Delta R.T.: -0.005 min
 Response: 20868
 Conc: 13.70 ng/ml



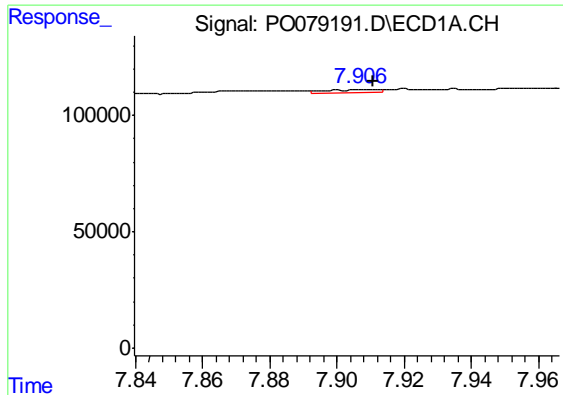
#35 AR-1260-5

R.T.: 0.000 min
 Exp R.T. : 8.451 min
 Response: 0
 Conc: N.D.



#35 AR-1260-5

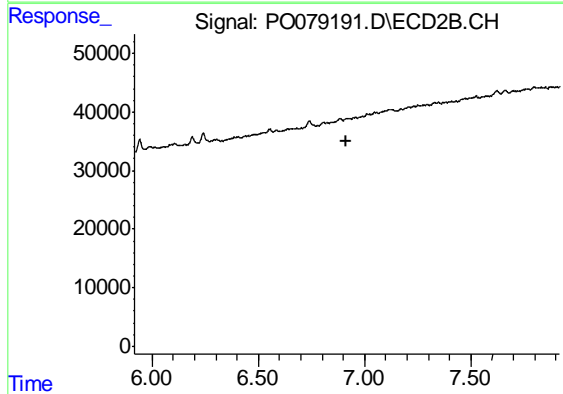
R.T.: 7.472 min
 Delta R.T.: 0.008 min
 Response: 10662
 Conc: 3.01 ng/ml



#36 AR-1262-1

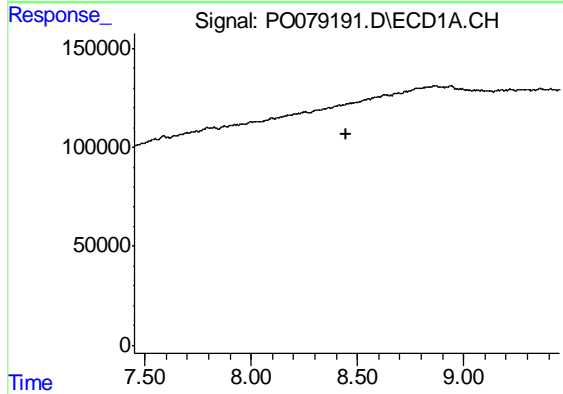
R.T.: 7.907 min
 Delta R.T.: -0.003 min
 Response: 14453
 Conc: 3.52 ng/ml

Instrument :
 ECD_O
 ClientSampled :
 1962-1964



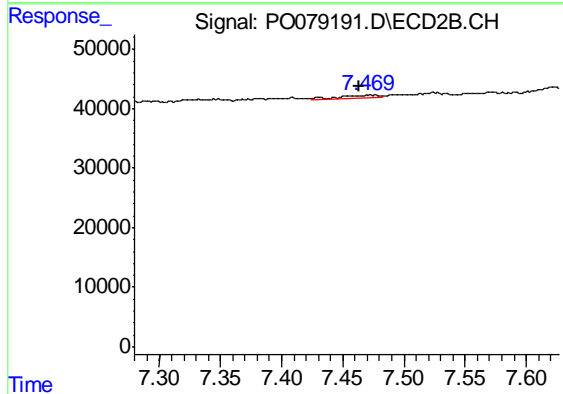
#36 AR-1262-1

R.T.: 0.000 min
 Exp R.T. : 6.916 min
 Response: 0
 Conc: N.D.



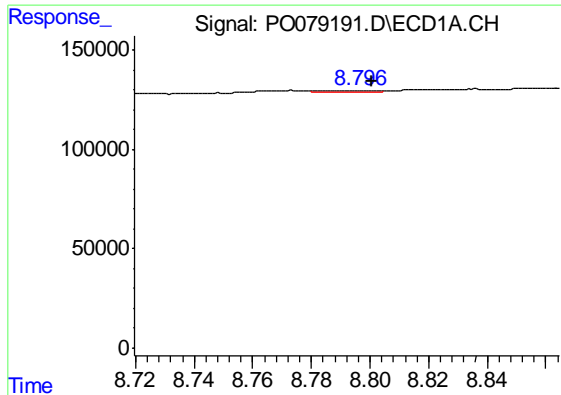
#37 AR-1262-2

R.T.: 0.000 min
 Exp R.T. : 8.451 min
 Response: 0
 Conc: N.D.



#37 AR-1262-2

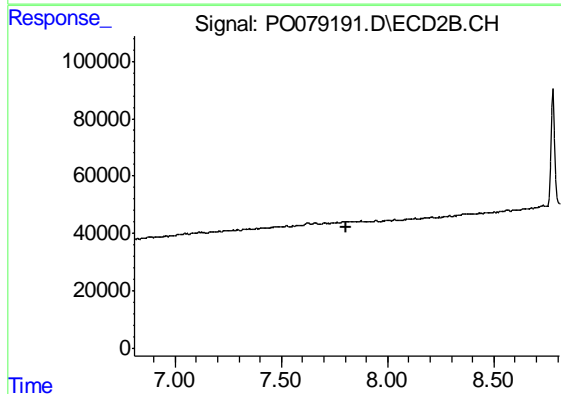
R.T.: 7.472 min
 Delta R.T.: 0.009 min
 Response: 10662
 Conc: 3.02 ng/ml



#39 AR-1262-4

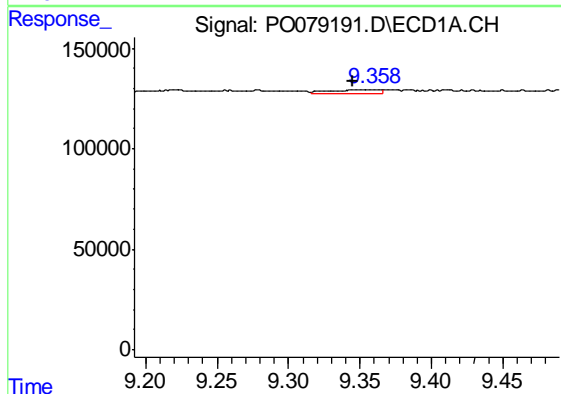
R.T.: 8.796 min
 Delta R.T.: -0.004 min
 Response: 11372
 Conc: 3.06 ng/ml

Instrument :
 ECD_O
 ClientSampled :
 1962-1964



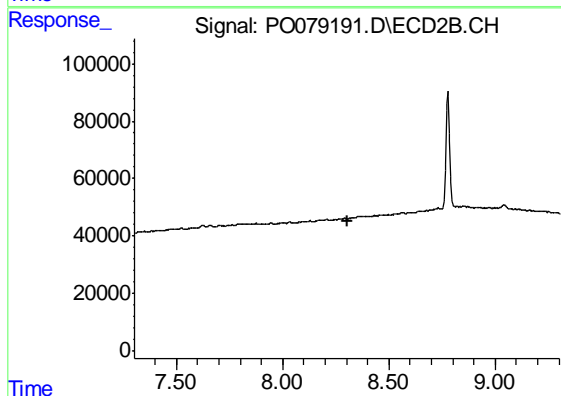
#39 AR-1262-4

R.T.: 0.000 min
 Exp R.T. : 7.808 min
 Response: 0
 Conc: N.D.



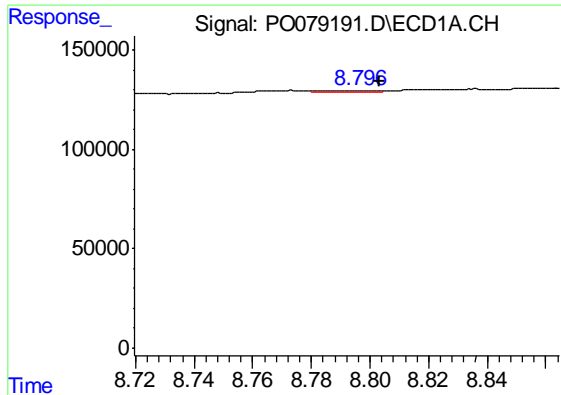
#40 AR-1262-5

R.T.: 9.357 min
 Delta R.T.: 0.012 min
 Response: 42456
 Conc: 17.52 ng/ml



#40 AR-1262-5

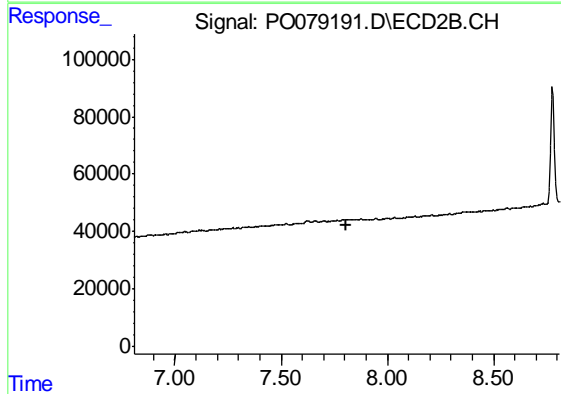
R.T.: 0.000 min
 Exp R.T. : 8.303 min
 Response: 0
 Conc: N.D.



#42 AR-1268-2

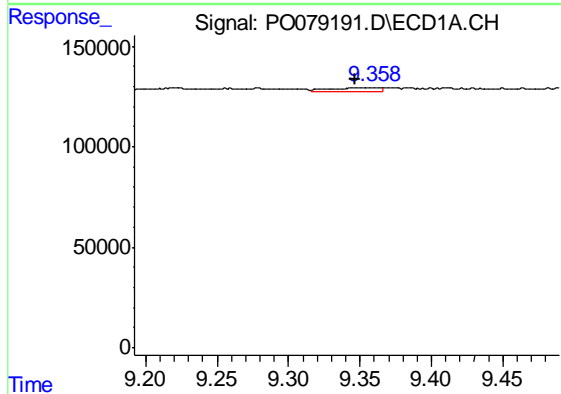
R.T.: 8.796 min
 Delta R.T.: -0.007 min
 Response: 11372
 Conc: 1.52 ng/ml

Instrument :
 ECD_O
 ClientSampleId :
 1962-1964



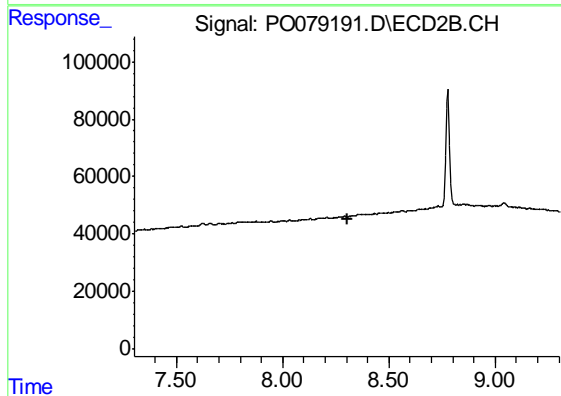
#42 AR-1268-2

R.T.: 0.000 min
 Exp R.T. : 7.810 min
 Response: 0
 Conc: N.D.



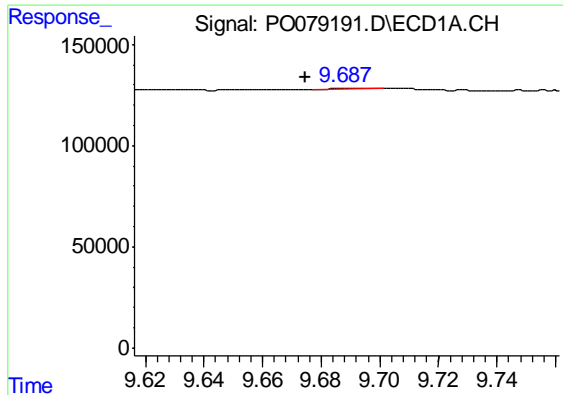
#44 AR-1268-4

R.T.: 9.357 min
 Delta R.T.: 0.011 min
 Response: 42456
 Conc: 16.49 ng/ml



#44 AR-1268-4

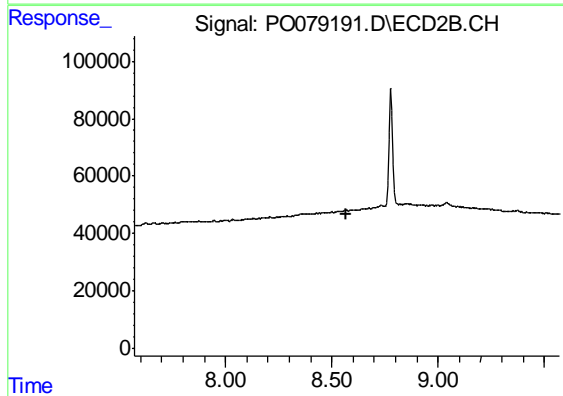
R.T.: 0.000 min
 Exp R.T. : 8.303 min
 Response: 0
 Conc: N.D.



#45 AR-1268-5

R.T.: 9.687 min
Delta R.T.: 0.013 min
Response: 4091
Conc: 0.20 ng/ml

Instrument :
ECD_O
ClientSampleId :
1962-1964



#45 AR-1268-5

R.T.: 0.000 min
Exp R.T. : 8.571 min
Response: 0
Conc: N.D.