

Data Path : Z:\pestpcbsrv\HPCHEM1\ECD_0\Data\P0062521\
 Data File : P0079192.D
 Signal(s) : Signal #1: ECD1A.CH Signal #2: ECD2B.CH
 Acq On : 26 Jun 2021 4:54
 Operator : DD\AJ
 Sample : M2847-05
 Misc :
 ALS Vial : 43 Sample Multiplier: 1

Instrument :
 ECD_0
 ClientSampleId :
 1966-1969

Integration File signal 1: autoint1.e
 Integration File signal 2: autoint2.e
 Quant Time: Jun 28 02:14:32 2021
 Quant Method : Z:\pestpcbsrv\HPCHEM1\ECD_0\methods\P0061921.M
 Quant Title : GC EXTRACTABLES
 QLast Update : Sun Jun 20 03:02:02 2021
 Response via : Initial Calibration
 Integrator: ChemStation 6890 Scale Mode: Small noise peaks clipped

Volume Inj. : 2 µl
 Signal #1 Phase : ZB-MR1 Signal #2 Phase: ZB-MR2
 Signal #1 Info : 30Mx0.32mmx 0.50µ Signal #2 Info : 30M x 0.32mm x 0.25µm

Compound	RT#1	RT#2	Resp#1	Resp#2	ng/ml	ng/ml

System Monitoring Compounds						
1) SA Tetrachlo...	4.333	3.629f	818513	1058756	10.371	35.623 #
2) SA Decachlor...	9.923	8.777	874905	398245	14.009	13.365
Target Compounds						
3) L1 AR-1016-1	5.650f	0.000	7315	0	2.735	N.D. #
4) L1 AR-1016-2	5.650	0.000	7315	0	1.790	N.D. #
5) L1 AR-1016-3	5.712	0.000	26837	0	10.684	N.D. #
6) L1 AR-1016-4	5.837f	5.121f	26687	16031	13.656	21.691 #
8) L2 AR-1221-1	4.579	0.000	60735	0	73.056	N.D. #
9) L2 AR-1221-2	4.676	3.931f	23712	39642	38.929	156.635 #
10) L2 AR-1221-3	4.755	0.000	13482	0	6.922	N.D. #
11) L3 AR-1232-1	4.755	0.000	13482	0	8.456	N.D. #
12) L3 AR-1232-2	5.311f	0.000	25821	0	32.146	N.D. #
13) L3 AR-1232-3	5.650	0.000	7315	0	4.785	N.D. #
14) L3 AR-1232-4	5.837f	5.121	26687	16031	36.091	57.434 #
15) L3 AR-1232-5	5.918	0.000	53068	0	102.737	N.D. #
16) L4 AR-1242-1	5.650f	0.000	7315	0	3.687	N.D. #
17) L4 AR-1242-2	5.650	0.000	7315	0	2.459	N.D. #
18) L4 AR-1242-3	5.712	0.000	26837	0	14.502	N.D. #
19) L4 AR-1242-4	5.837f	5.121	26687	16031	18.485	26.191 #
20) L4 AR-1242-5	6.600	0.000	15682	0	10.150	N.D. #
21) L5 AR-1248-1	5.650f	0.000	7315	0	4.631	N.D. #
22) L5 AR-1248-2	5.918	5.121f	53068	16031	23.988	16.240 #
23) L5 AR-1248-3	0.000	5.121	0	16031	N.D.	16.148 #
24) L5 AR-1248-4	6.530f	0.000	16790	0	6.058	N.D. #
25) L5 AR-1248-5	6.600	0.000	15682	0	5.740	N.D. #
26) L6 AR-1254-1	6.530	0.000	16790	0	6.233	N.D. #
27) L6 AR-1254-2	6.753	0.000	22711	0	5.415	N.D. #
28) L6 AR-1254-3	7.135	0.000	55288	0	12.414	N.D. #
29) L6 AR-1254-4	7.415	0.000	10146	0	3.297	N.D. #
30) L6 AR-1254-5	7.834	6.916	32568	22245	9.977	11.172
31) L7 AR-1260-1	7.288	0.000	15898	0	4.772	N.D. #
32) L7 AR-1260-2	7.550	0.000	22174	0	5.705	N.D. #
33) L7 AR-1260-3	7.905	0.000	24910	0	8.229	N.D. #
34) L7 AR-1260-4	8.134	0.000	13537	0	4.134	N.D. #
35) L7 AR-1260-5	8.446	7.469	25816	29107	4.031	8.220 #
36) L8 AR-1262-1	7.905	6.916	24910	22245	6.063	21.340 #
37) L8 AR-1262-2	8.446	7.469	25816	29107	3.877	8.248 #
38) L8 AR-1262-3	0.000	7.733	0	46387	N.D.	32.361 #
39) L8 AR-1262-4	8.787	0.000	20086	0	5.396	N.D. #
40) L8 AR-1262-5	9.345	0.000	43974	0	18.149	N.D. #
41) L9 AR-1268-1	0.000	7.733	0	46387	N.D.	10.562 #
42) L9 AR-1268-2	8.787f	0.000	20086	0	2.686	N.D. #
43) L9 AR-1268-3	8.991	0.000	2916	0	0.456	N.D. #

Data Path : Z:\pestpcbsrv\HPCHEM1\ECD_0\Data\P0062521\
 Data File : P0079192.D
 Signal(s) : Signal #1: ECD1A.CH Signal #2: ECD2B.CH
 Acq On : 26 Jun 2021 4:54
 Operator : DD\AJ
 Sample : M2847-05
 Misc :
 ALS Vial : 43 Sample Multiplier: 1

Instrument :
 ECD_0
 ClientSampleId :
 1966-1969

Integration File signal 1: autoint1.e
 Integration File signal 2: autoint2.e
 Quant Time: Jun 28 02:14:32 2021
 Quant Method : Z:\pestpcbsrv\HPCHEM1\ECD_0\methods\P0061921.M
 Quant Title : GC EXTRACTABLES
 QLast Update : Sun Jun 20 03:02:02 2021
 Response via : Initial Calibration
 Integrator: ChemStation 6890 Scale Mode: Small noise peaks clipped

Volume Inj. : 2 µl
 Signal #1 Phase : ZB-MR1 Signal #2 Phase: ZB-MR2
 Signal #1 Info : 30Mx0.32mmx 0.50µ Signal #2 Info : 30M x 0.32mm x 0.25µm

	Compound	RT#1	RT#2	Resp#1	Resp#2	ng/ml	ng/ml	
44)	L9 AR-1268-4	9.345	0.000	43974	0	17.085	N.D.	#
45)	L9 AR-1268-5	9.663	0.000	13100	0	0.654	N.D.	#

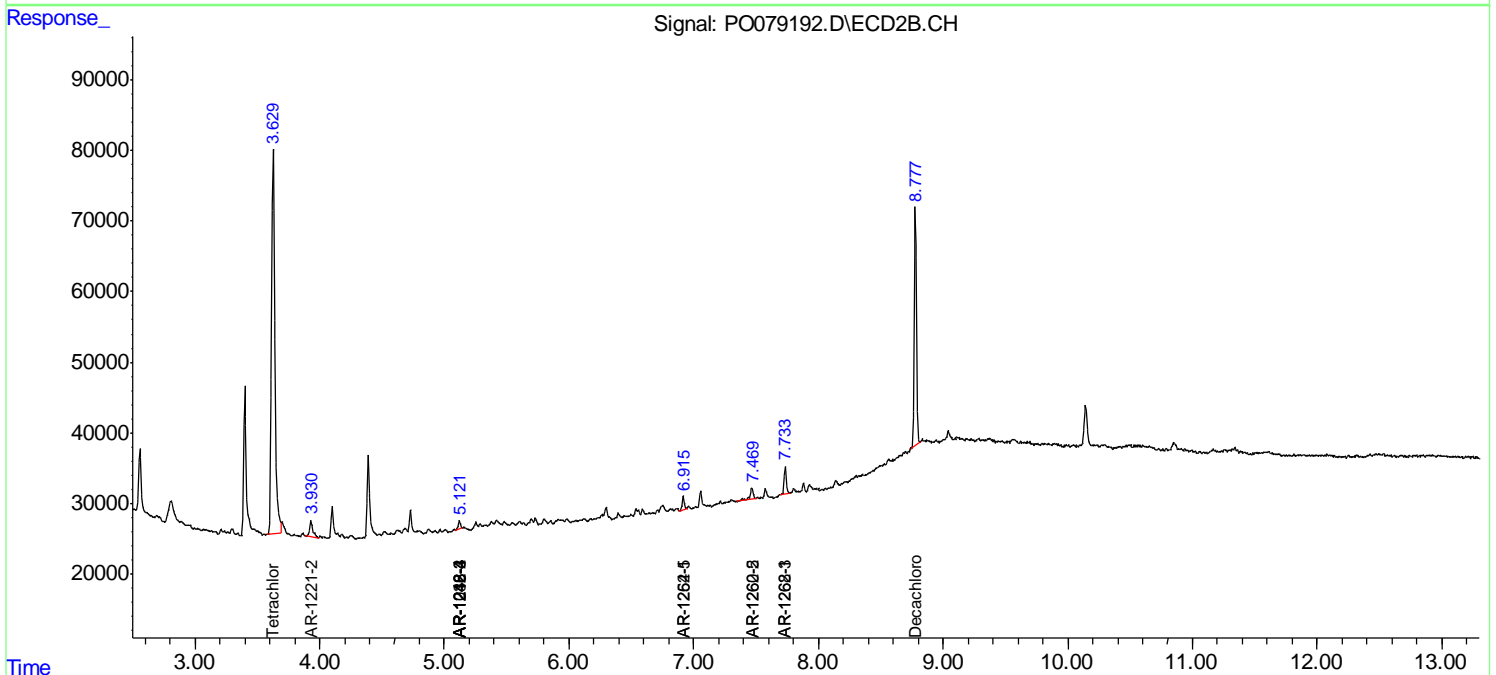
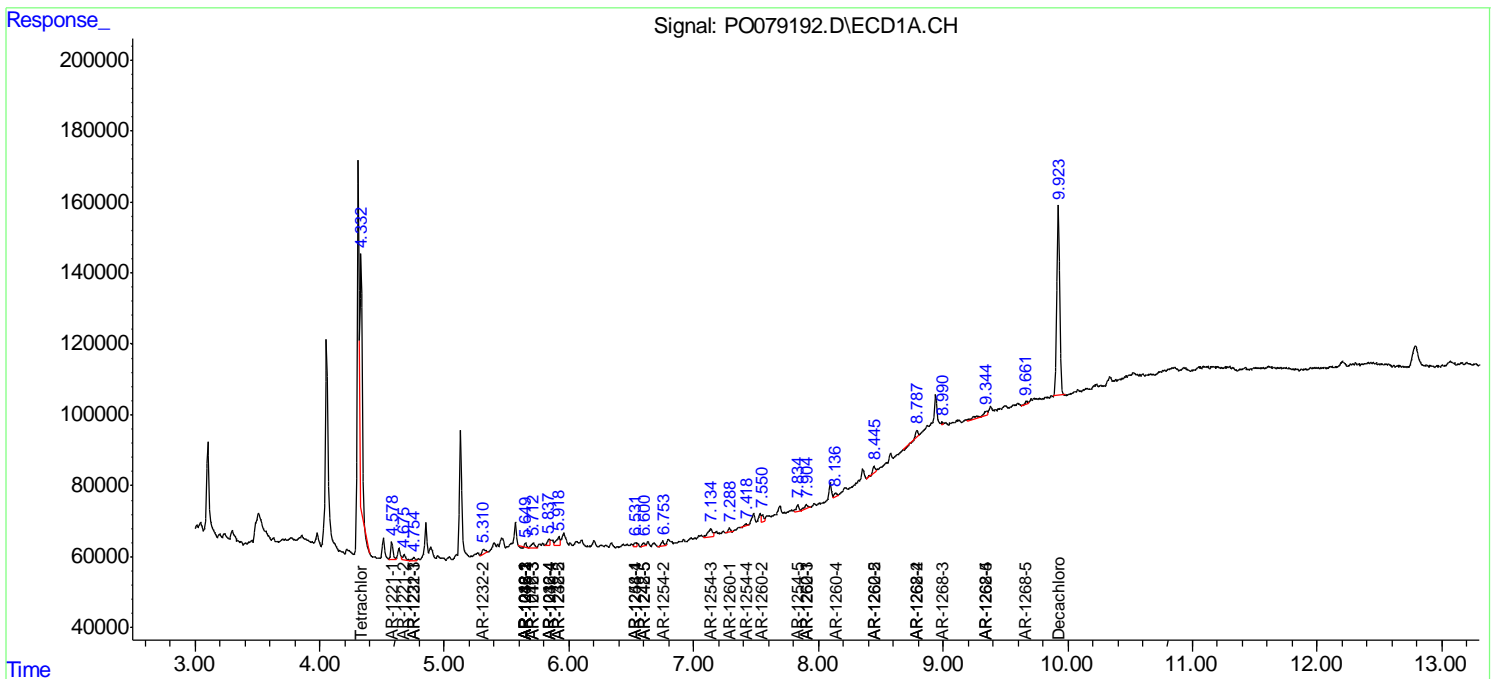
(f)=RT Delta > 1/2 Window (#)=Amounts differ by > 25% (m)=manual int.

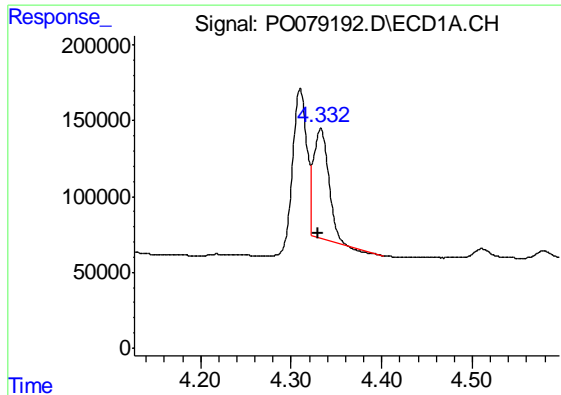
Data Path : Z:\pestpcbsrv\HPCHEM1\ECD_O\Data\PO062521\
 Data File : PO079192.D
 Signal(s) : Signal #1: ECD1A.CH Signal #2: ECD2B.CH
 Acq On : 26 Jun 2021 4:54
 Operator : DD\AJ
 Sample : M2847-05
 Misc :
 ALS Vial : 43 Sample Multiplier: 1

Instrument :
 ECD_O
 ClientSampled :
 1966-1969

Integration File signal 1: autoint1.e
 Integration File signal 2: autoint2.e
 Quant Time: Jun 28 02:14:32 2021
 Quant Method : Z:\pestpcbsrv\HPCHEM1\ECD_O\methods\PO061921.M
 Quant Title : GC EXTRACTABLES
 QLast Update : Sun Jun 20 03:02:02 2021
 Response via : Initial Calibration
 Integrator: ChemStation 6890 Scale Mode: Small noise peaks clipped

Volume Inj. : 2 µl
 Signal #1 Phase : ZB-MR1 Signal #2 Phase: ZB-MR2
 Signal #1 Info : 30Mx0.32mmx 0.50µ Signal #2 Info : 30M x 0.32mm x 0.25µm

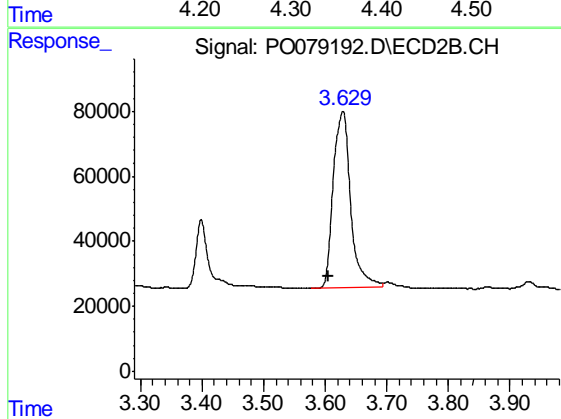




#1 Tetrachloro-m-xylene

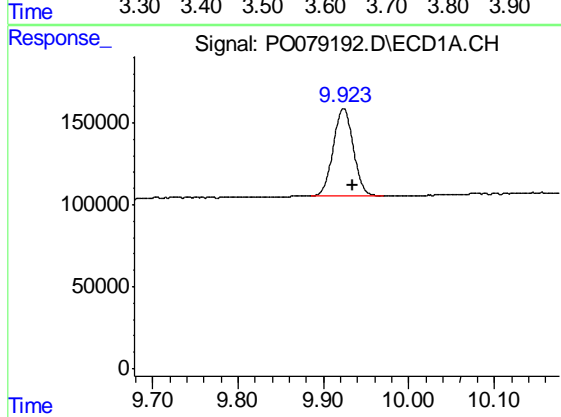
R.T.: 4.333 min
 Delta R.T.: 0.003 min
 Response: 818513
 Conc: 10.37 ng/ml

Instrument :
 ECD_O
 ClientSampleId :
 1966-1969



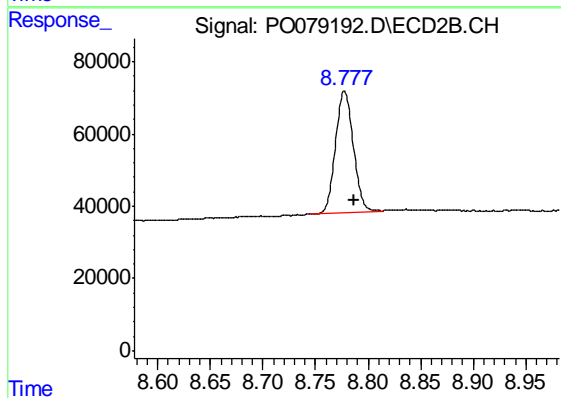
#1 Tetrachloro-m-xylene

R.T.: 3.629 min
 Delta R.T.: 0.023 min
 Response: 1058756
 Conc: 35.62 ng/ml



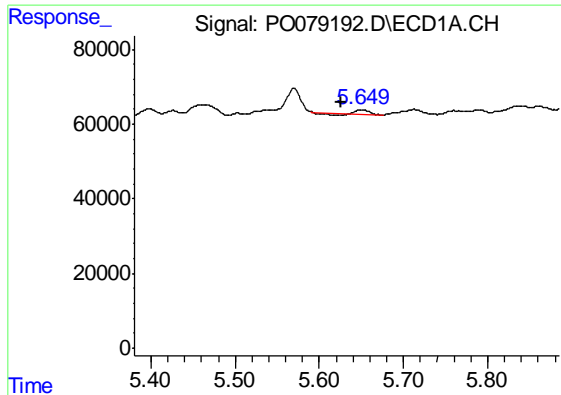
#2 Decachlorobiphenyl

R.T.: 9.923 min
 Delta R.T.: -0.011 min
 Response: 874905
 Conc: 14.01 ng/ml



#2 Decachlorobiphenyl

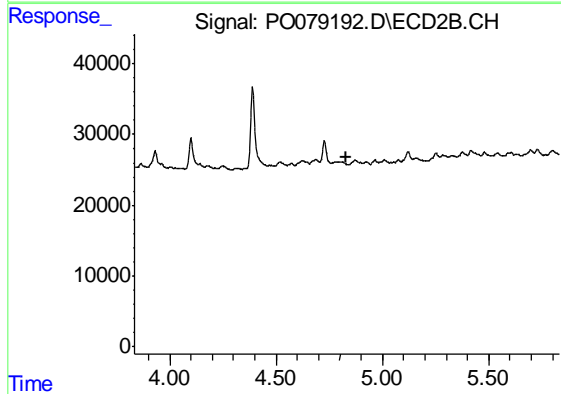
R.T.: 8.777 min
 Delta R.T.: -0.009 min
 Response: 398245
 Conc: 13.36 ng/ml



#3 AR-1016-1

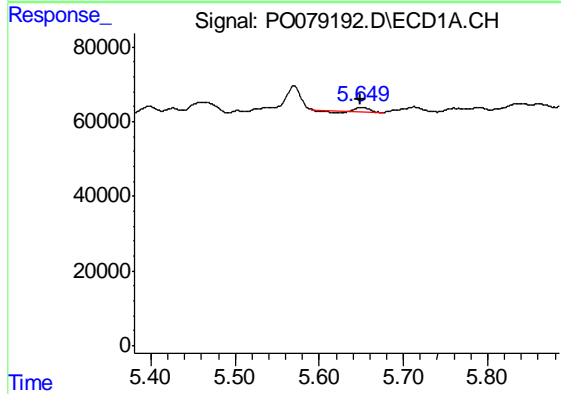
R.T.: 5.650 min
 Delta R.T.: 0.024 min
 Response: 7315
 Conc: 2.73 ng/ml

Instrument :
 ECD_O
 ClientSampled :
 1966-1969



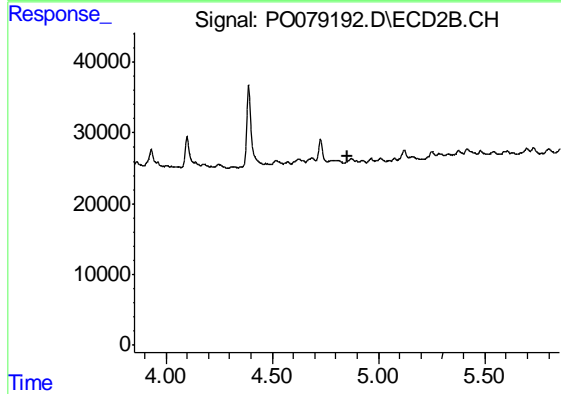
#3 AR-1016-1

R.T.: 0.000 min
 Exp R.T. : 4.833 min
 Response: 0
 Conc: N.D.



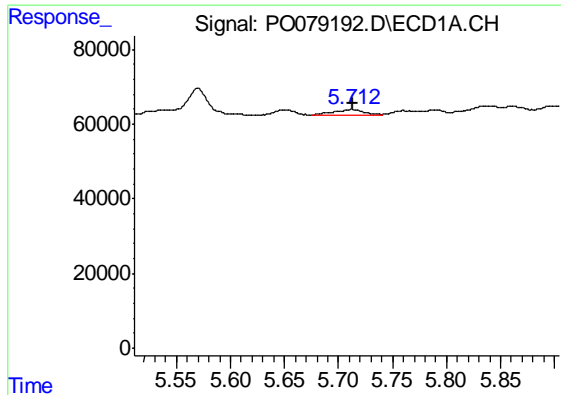
#4 AR-1016-2

R.T.: 5.650 min
 Delta R.T.: 0.001 min
 Response: 7315
 Conc: 1.79 ng/ml



#4 AR-1016-2

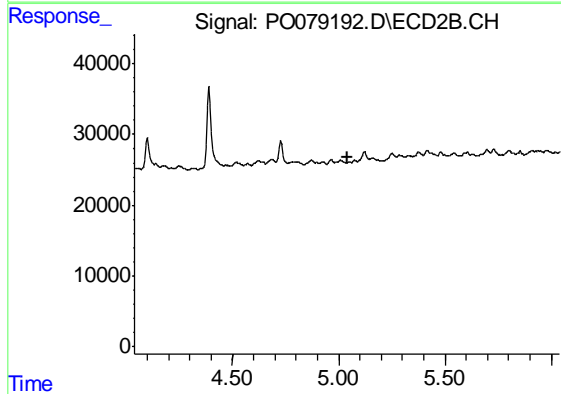
R.T.: 0.000 min
 Exp R.T. : 4.852 min
 Response: 0
 Conc: N.D.



#5 AR-1016-3

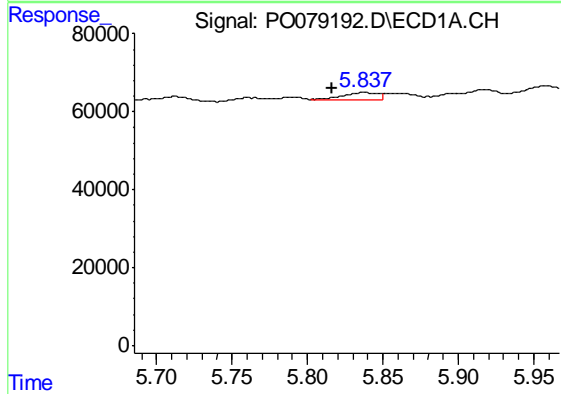
R.T.: 5.712 min
 Delta R.T.: 0.000 min
 Response: 26837
 Conc: 10.68 ng/ml

Instrument :
 ECD_O
 ClientSampled :
 1966-1969



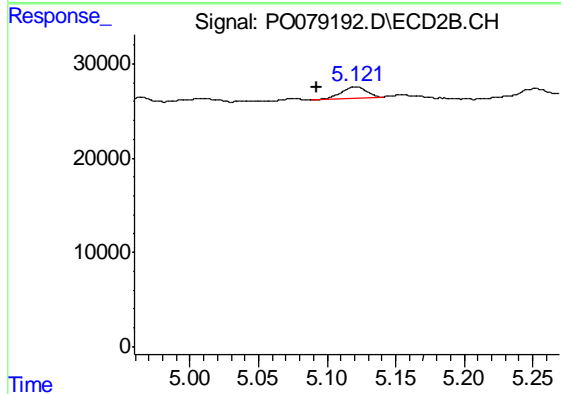
#5 AR-1016-3

R.T.: 0.000 min
 Exp R.T. : 5.039 min
 Response: 0
 Conc: N.D.



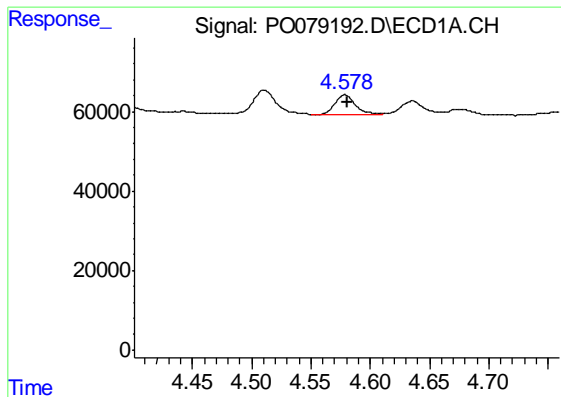
#6 AR-1016-4

R.T.: 5.837 min
 Delta R.T.: 0.020 min
 Response: 26687
 Conc: 13.66 ng/ml



#6 AR-1016-4

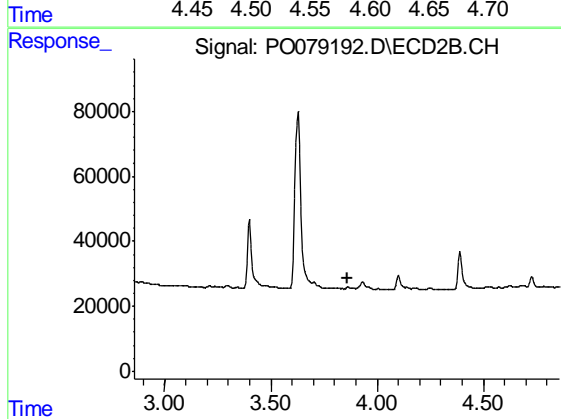
R.T.: 5.121 min
 Delta R.T.: 0.029 min
 Response: 16031
 Conc: 21.69 ng/ml



#8 AR-1221-1

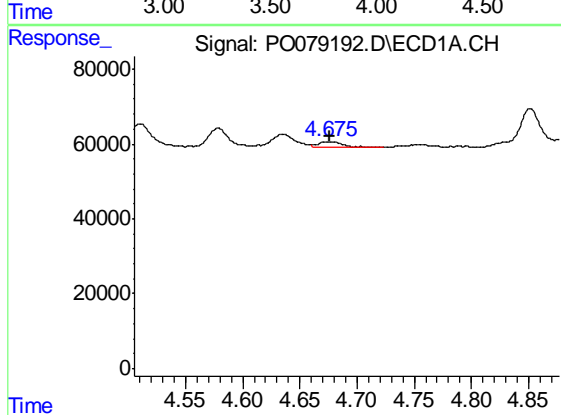
R.T.: 4.579 min
 Delta R.T.: -0.002 min
 Response: 60735
 Conc: 73.06 ng/ml

Instrument :
 ECD_O
 ClientSampleId :
 1966-1969



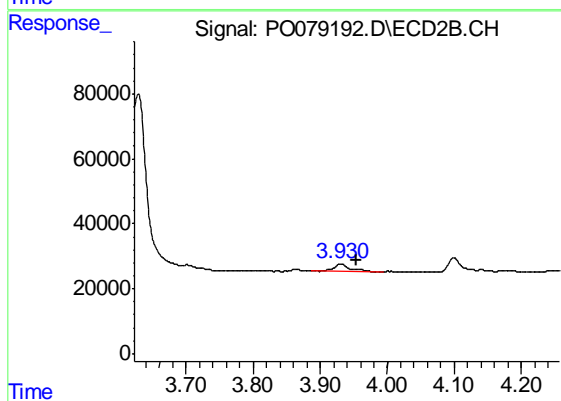
#8 AR-1221-1

R.T.: 0.000 min
 Exp R.T. : 3.858 min
 Response: 0
 Conc: N.D.



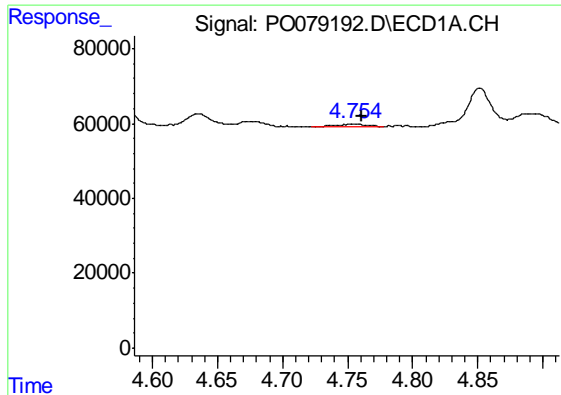
#9 AR-1221-2

R.T.: 4.676 min
 Delta R.T.: 0.000 min
 Response: 23712
 Conc: 38.93 ng/ml



#9 AR-1221-2

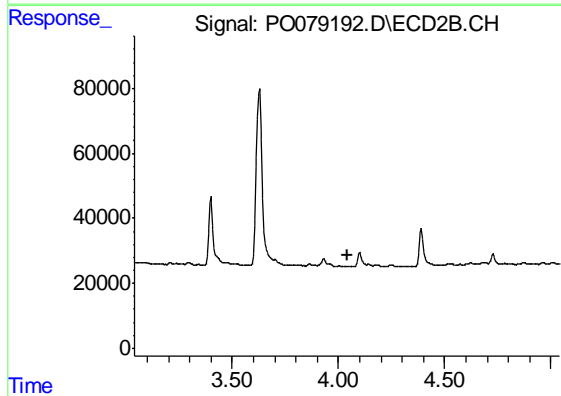
R.T.: 3.931 min
 Delta R.T.: -0.024 min
 Response: 39642
 Conc: 156.64 ng/ml



#10 AR-1221-3

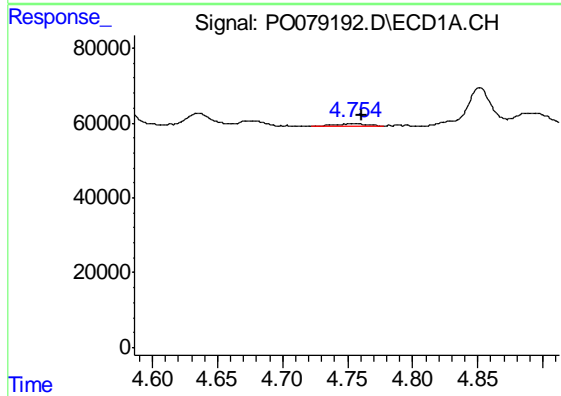
R.T.: 4.755 min
 Delta R.T.: -0.006 min
 Response: 13482
 Conc: 6.92 ng/ml

Instrument :
 ECD_O
 ClientSampled :
 1966-1969



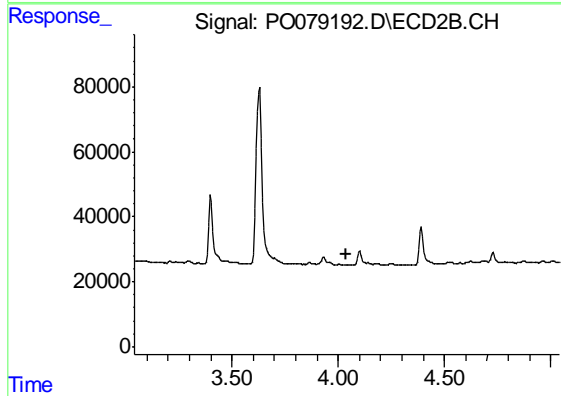
#10 AR-1221-3

R.T.: 0.000 min
 Exp R.T. : 4.040 min
 Response: 0
 Conc: N.D.



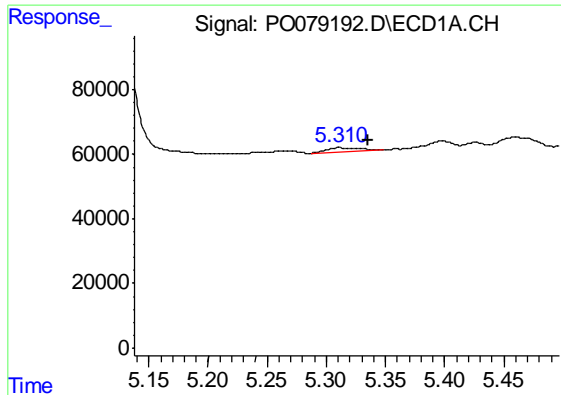
#11 AR-1232-1

R.T.: 4.755 min
 Delta R.T.: -0.007 min
 Response: 13482
 Conc: 8.46 ng/ml



#11 AR-1232-1

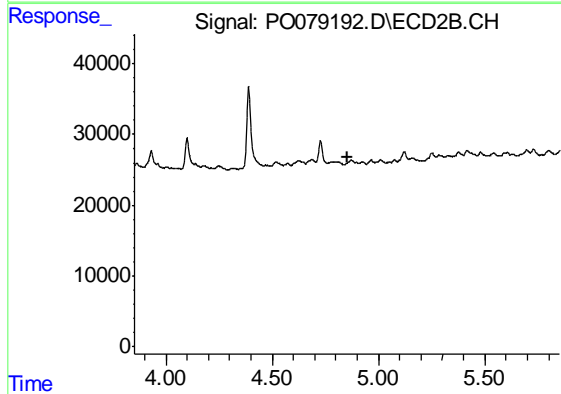
R.T.: 0.000 min
 Exp R.T. : 4.041 min
 Response: 0
 Conc: N.D.



#12 AR-1232-2

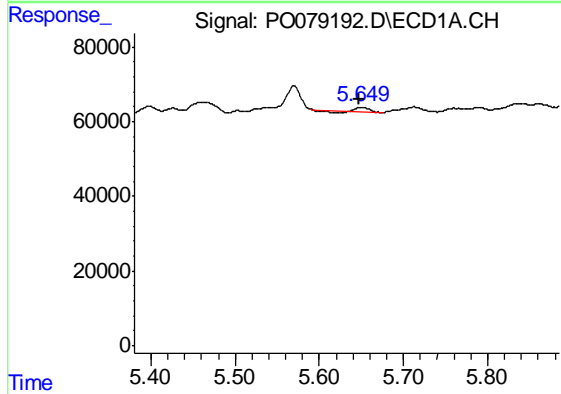
R.T.: 5.311 min
 Delta R.T.: -0.024 min
 Response: 25821
 Conc: 32.15 ng/ml

Instrument :
 ECD_O
 ClientSampled :
 1966-1969



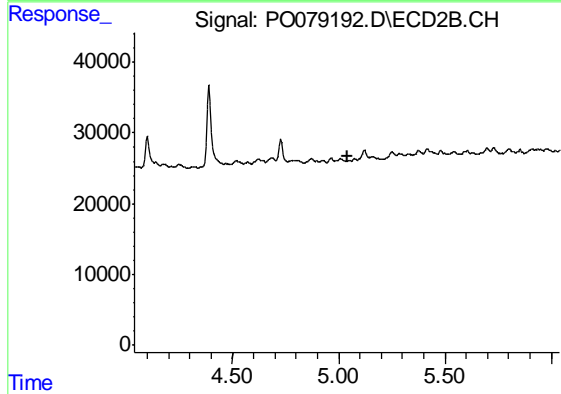
#12 AR-1232-2

R.T.: 0.000 min
 Exp R.T. : 4.852 min
 Response: 0
 Conc: N.D.



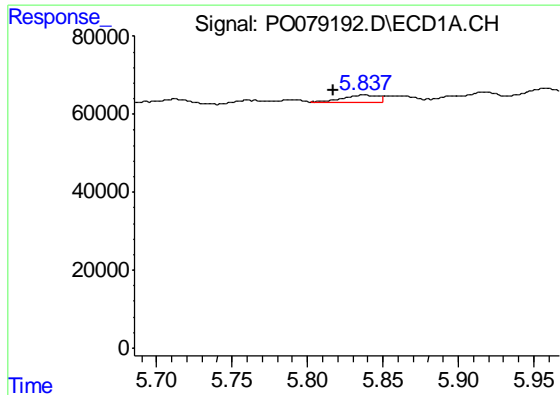
#13 AR-1232-3

R.T.: 5.650 min
 Delta R.T.: 0.002 min
 Response: 7315
 Conc: 4.79 ng/ml



#13 AR-1232-3

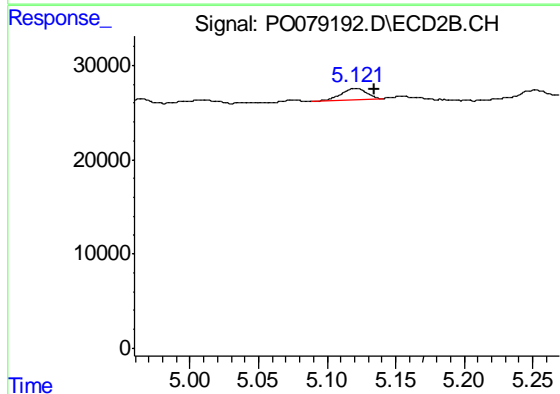
R.T.: 0.000 min
 Exp R.T. : 5.039 min
 Response: 0
 Conc: N.D.



#14 AR-1232-4

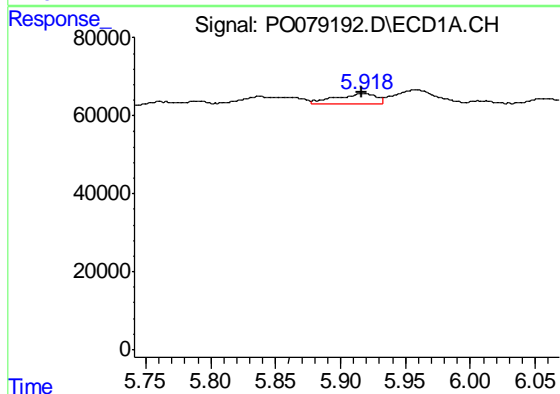
R.T.: 5.837 min
 Delta R.T.: 0.020 min
 Response: 26687
 Conc: 36.09 ng/ml

Instrument :
 ECD_O
 ClientSampleId :
 1966-1969



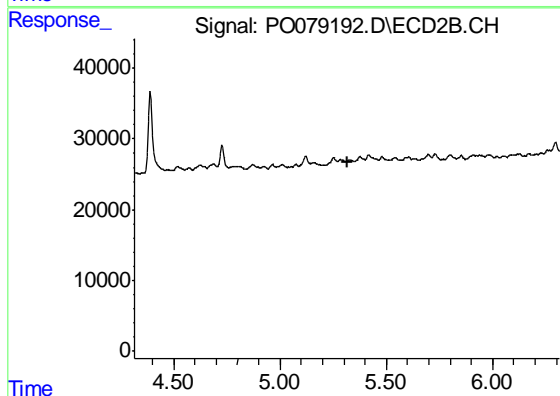
#14 AR-1232-4

R.T.: 5.121 min
 Delta R.T.: -0.014 min
 Response: 16031
 Conc: 57.43 ng/ml



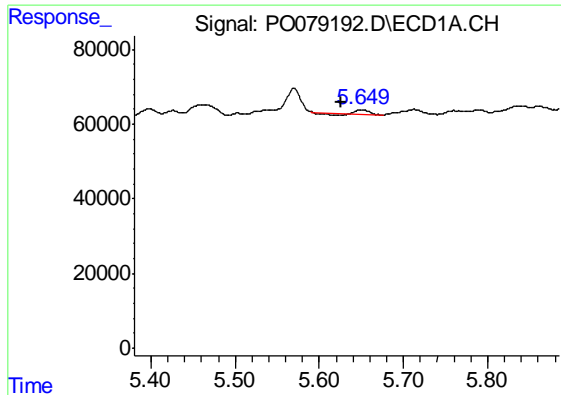
#15 AR-1232-5

R.T.: 5.918 min
 Delta R.T.: 0.002 min
 Response: 53068
 Conc: 102.74 ng/ml



#15 AR-1232-5

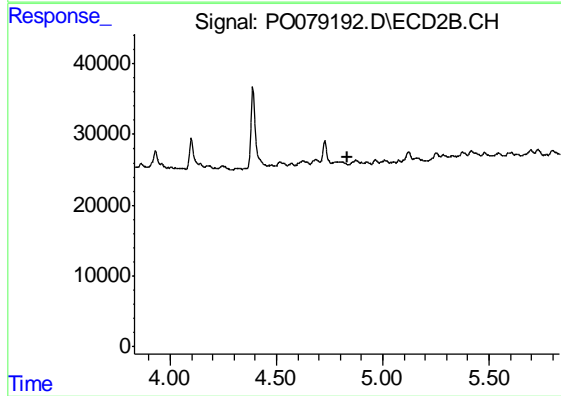
R.T.: 0.000 min
 Exp R.T. : 5.315 min
 Response: 0
 Conc: N.D.



#16 AR-1242-1

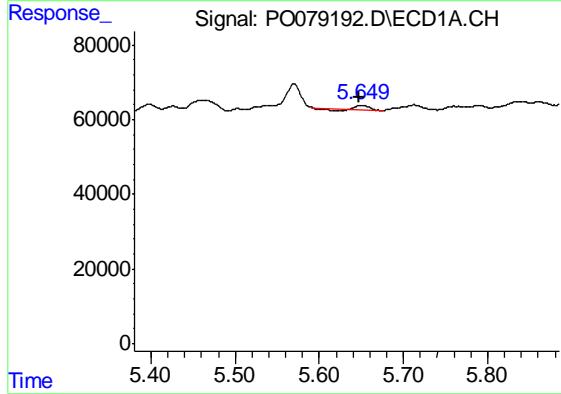
R.T.: 5.650 min
 Delta R.T.: 0.024 min
 Response: 7315
 Conc: 3.69 ng/ml

Instrument :
 ECD_O
 ClientSampled :
 1966-1969



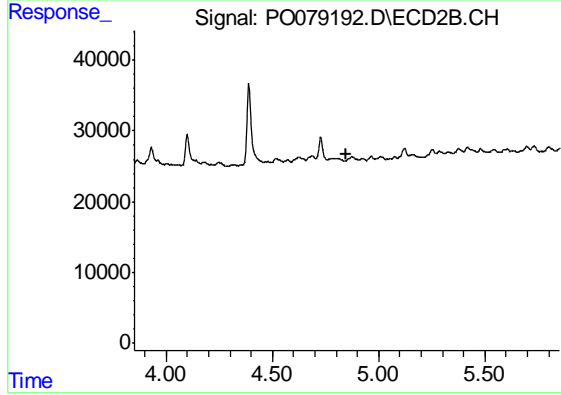
#16 AR-1242-1

R.T.: 0.000 min
 Exp R.T. : 4.832 min
 Response: 0
 Conc: N.D.



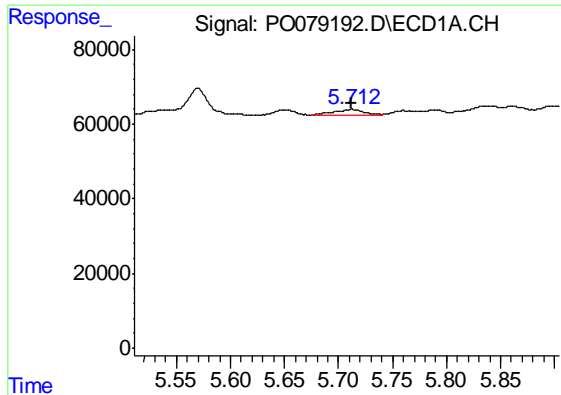
#17 AR-1242-2

R.T.: 5.650 min
 Delta R.T.: 0.002 min
 Response: 7315
 Conc: 2.46 ng/ml



#17 AR-1242-2

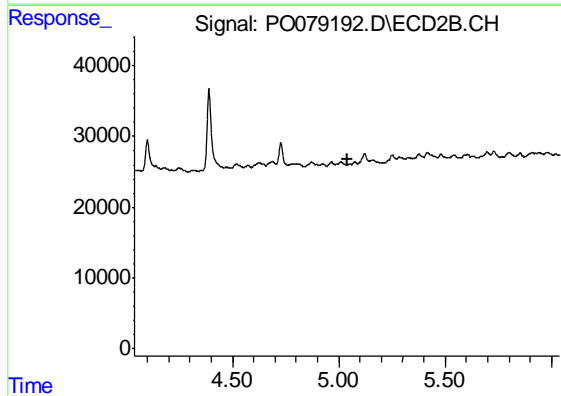
R.T.: 0.000 min
 Exp R.T. : 4.851 min
 Response: 0
 Conc: N.D.



#18 AR-1242-3

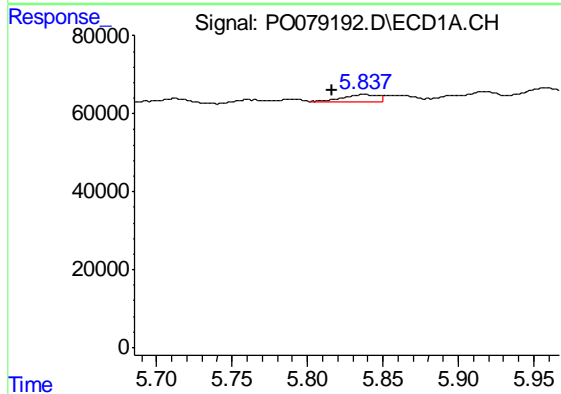
R.T.: 5.712 min
 Delta R.T.: 0.000 min
 Response: 26837
 Conc: 14.50 ng/ml

Instrument :
 ECD_O
 ClientSampled :
 1966-1969



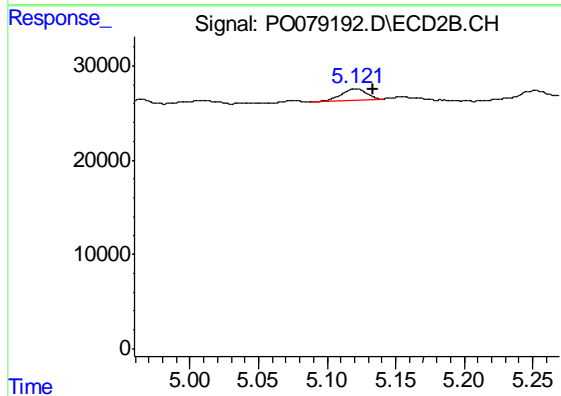
#18 AR-1242-3

R.T.: 0.000 min
 Exp R.T. : 5.038 min
 Response: 0
 Conc: N.D.



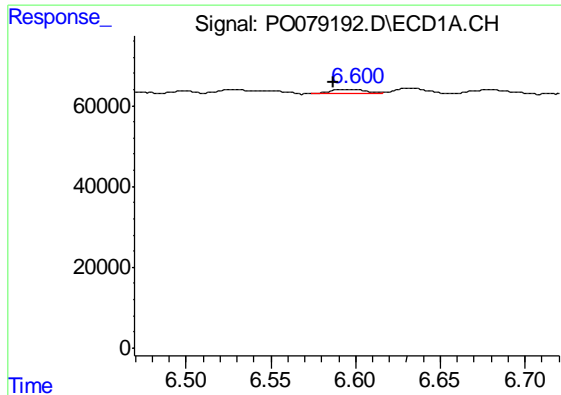
#19 AR-1242-4

R.T.: 5.837 min
 Delta R.T.: 0.021 min
 Response: 26687
 Conc: 18.49 ng/ml



#19 AR-1242-4

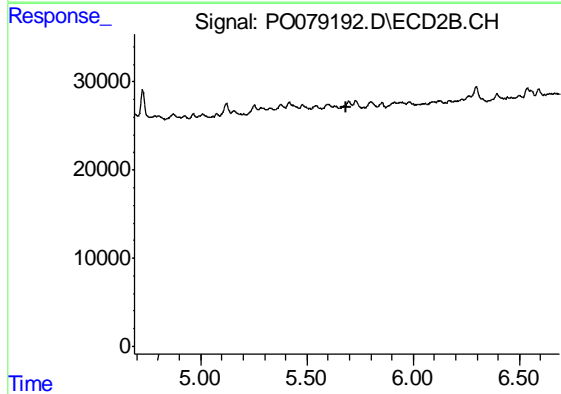
R.T.: 5.121 min
 Delta R.T.: -0.013 min
 Response: 16031
 Conc: 26.19 ng/ml



#20 AR-1242-5

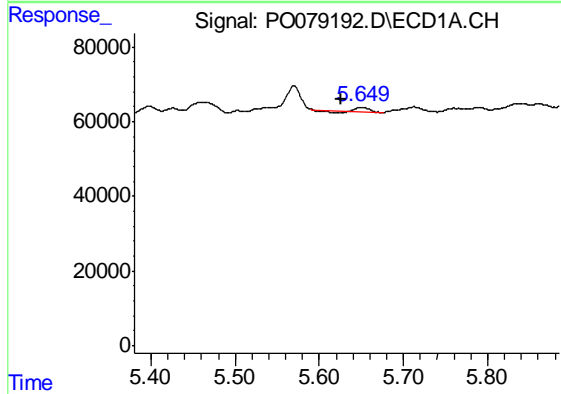
R.T.: 6.600 min
 Delta R.T.: 0.013 min
 Response: 15682
 Conc: 10.15 ng/ml

Instrument :
 ECD_O
 ClientSampleId :
 1966-1969



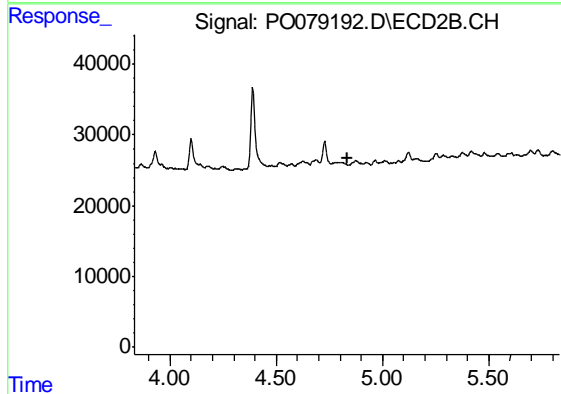
#20 AR-1242-5

R.T.: 0.000 min
 Exp R.T. : 5.688 min
 Response: 0
 Conc: N.D.



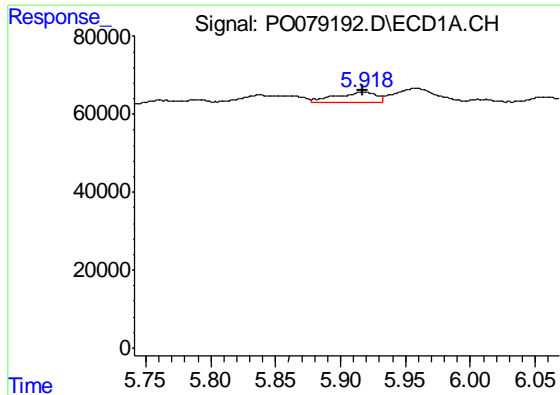
#21 AR-1248-1

R.T.: 5.650 min
 Delta R.T.: 0.024 min
 Response: 7315
 Conc: 4.63 ng/ml



#21 AR-1248-1

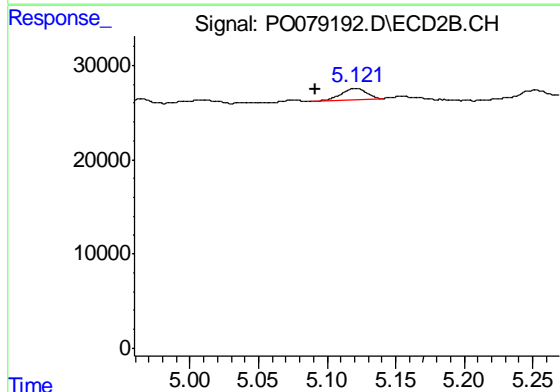
R.T.: 0.000 min
 Exp R.T. : 4.833 min
 Response: 0
 Conc: N.D.



#22 AR-1248-2

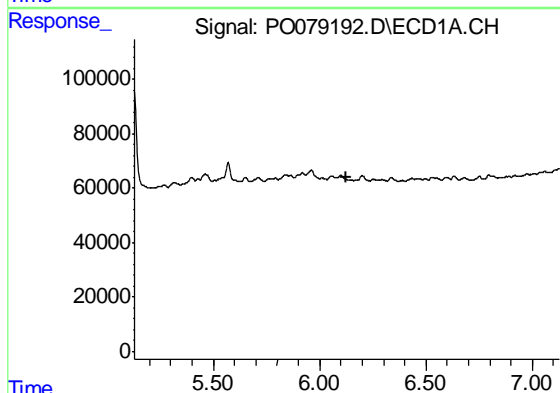
R.T.: 5.918 min
 Delta R.T.: 0.000 min
 Response: 53068
 Conc: 23.99 ng/ml

Instrument :
 ECD_O
 ClientSampleId :
 1966-1969



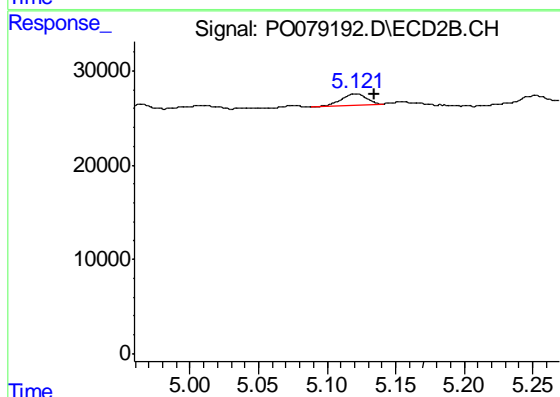
#22 AR-1248-2

R.T.: 5.121 min
 Delta R.T.: 0.029 min
 Response: 16031
 Conc: 16.24 ng/ml



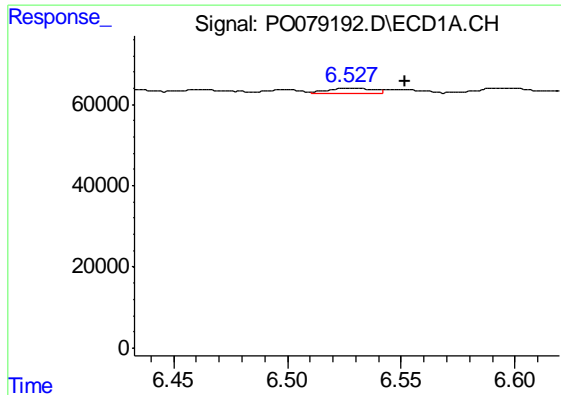
#23 AR-1248-3

R.T.: 0.000 min
 Exp R.T. : 6.128 min
 Response: 0
 Conc: N.D.



#23 AR-1248-3

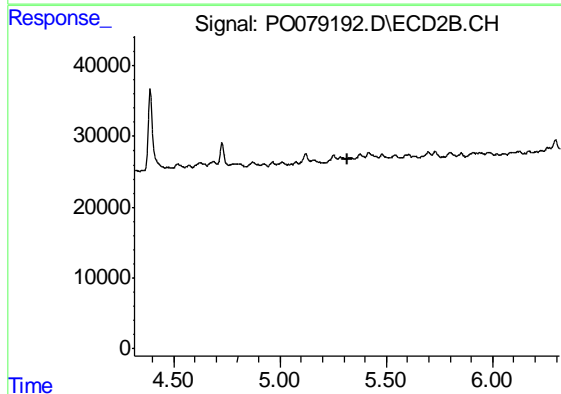
R.T.: 5.121 min
 Delta R.T.: -0.013 min
 Response: 16031
 Conc: 16.15 ng/ml



#24 AR-1248-4

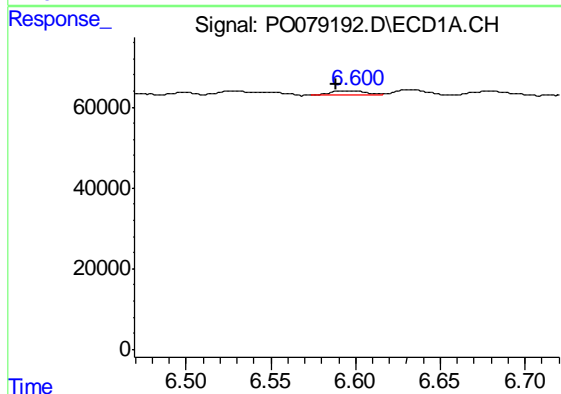
R.T.: 6.530 min
 Delta R.T.: -0.022 min
 Response: 16790
 Conc: 6.06 ng/ml

Instrument :
 ECD_O
 ClientSampled :
 1966-1969



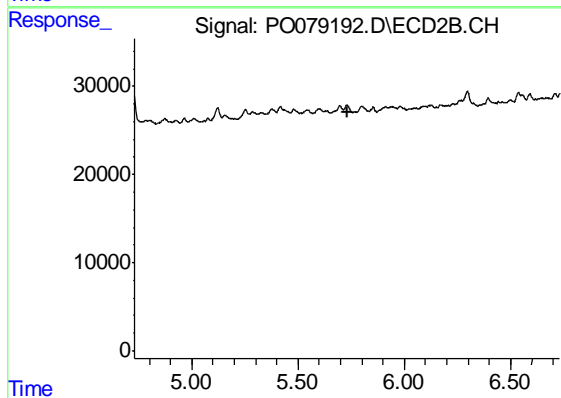
#24 AR-1248-4

R.T.: 0.000 min
 Exp R.T. : 5.315 min
 Response: 0
 Conc: N.D.



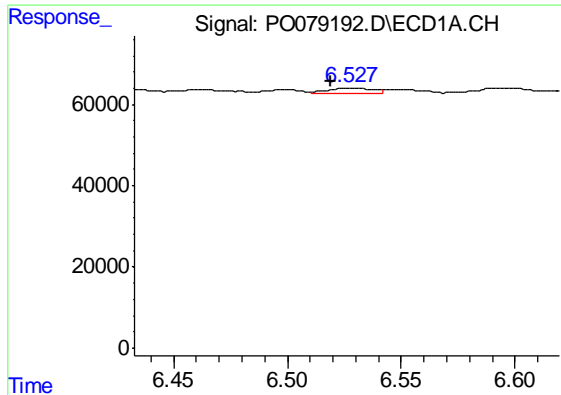
#25 AR-1248-5

R.T.: 6.600 min
 Delta R.T.: 0.012 min
 Response: 15682
 Conc: 5.74 ng/ml



#25 AR-1248-5

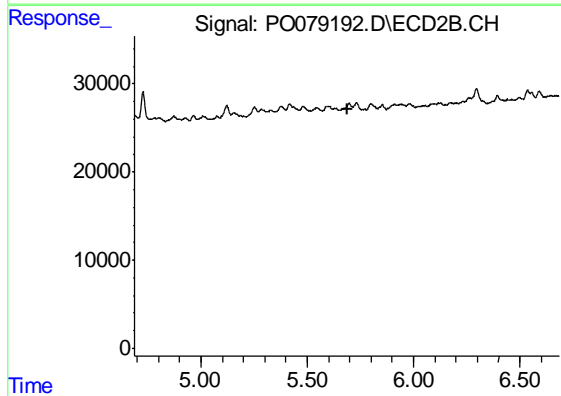
R.T.: 0.000 min
 Exp R.T. : 5.730 min
 Response: 0
 Conc: N.D.



#26 AR-1254-1

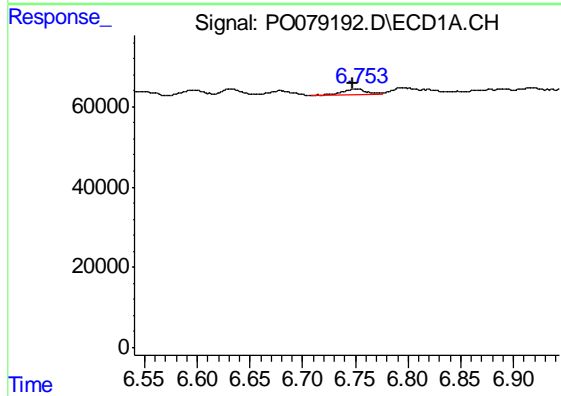
R.T.: 6.530 min
 Delta R.T.: 0.011 min
 Response: 16790
 Conc: 6.23 ng/ml

Instrument :
 ECD_O
 ClientSampleId :
 1966-1969



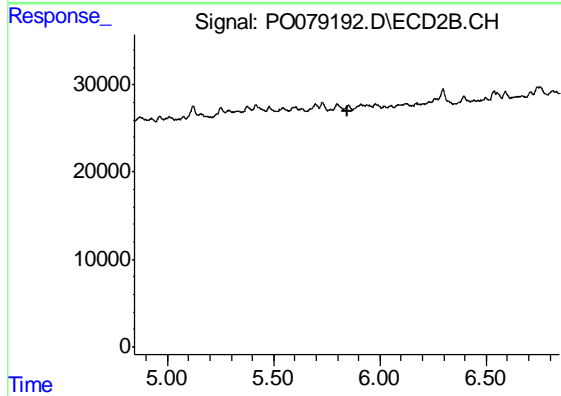
#26 AR-1254-1

R.T.: 0.000 min
 Exp R.T. : 5.687 min
 Response: 0
 Conc: N.D.



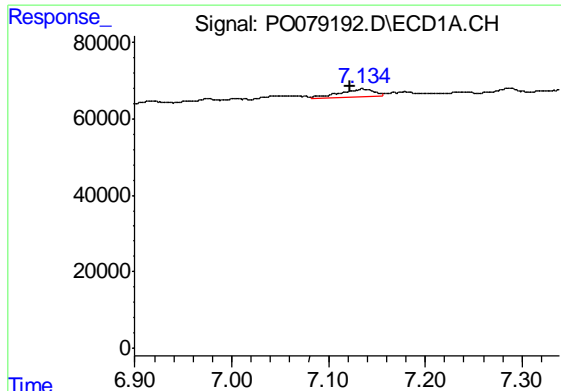
#27 AR-1254-2

R.T.: 6.753 min
 Delta R.T.: 0.006 min
 Response: 22711
 Conc: 5.41 ng/ml



#27 AR-1254-2

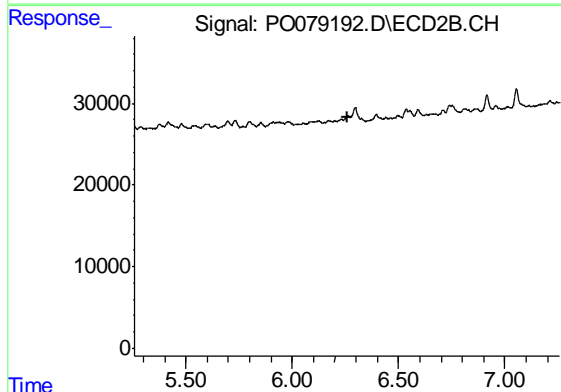
R.T.: 0.000 min
 Exp R.T. : 5.845 min
 Response: 0
 Conc: N.D.



#28 AR-1254-3

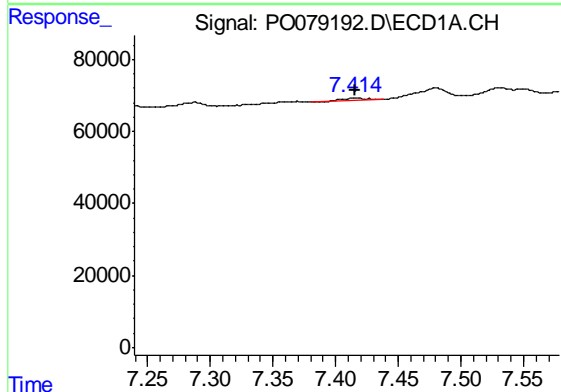
R.T.: 7.135 min
 Delta R.T.: 0.013 min
 Response: 55288
 Conc: 12.41 ng/ml

Instrument :
 ECD_O
 ClientSampled :
 1966-1969



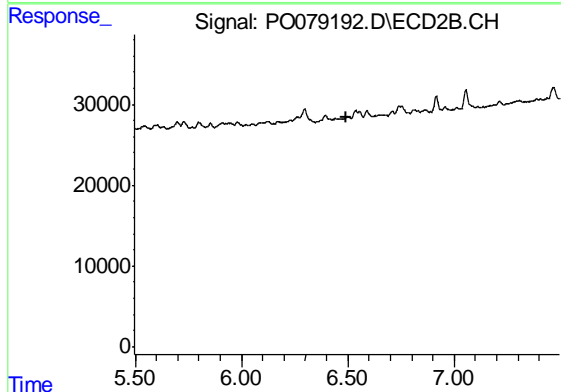
#28 AR-1254-3

R.T.: 0.000 min
 Exp R.T. : 6.257 min
 Response: 0
 Conc: N.D.



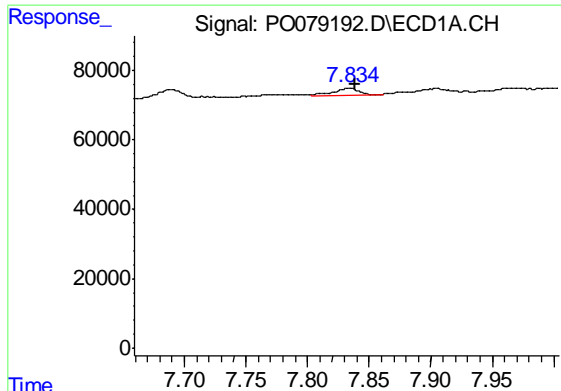
#29 AR-1254-4

R.T.: 7.415 min
 Delta R.T.: 0.000 min
 Response: 10146
 Conc: 3.30 ng/ml



#29 AR-1254-4

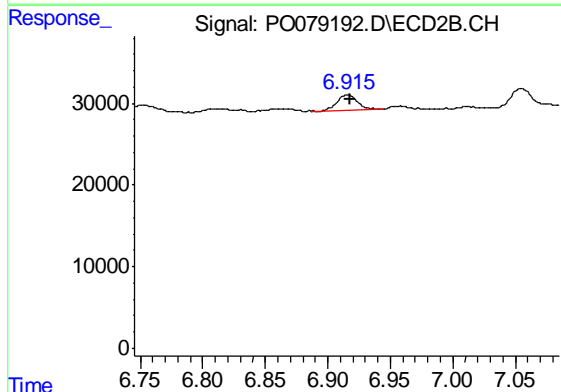
R.T.: 0.000 min
 Exp R.T. : 6.495 min
 Response: 0
 Conc: N.D.



#30 AR-1254-5

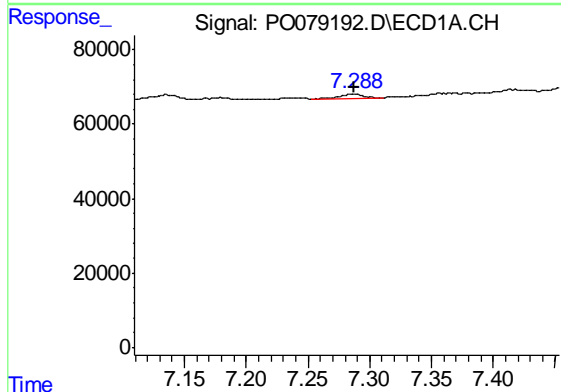
R.T.: 7.834 min
 Delta R.T.: -0.004 min
 Response: 32568
 Conc: 9.98 ng/ml

Instrument :
 ECD_O
 ClientSampled :
 1966-1969



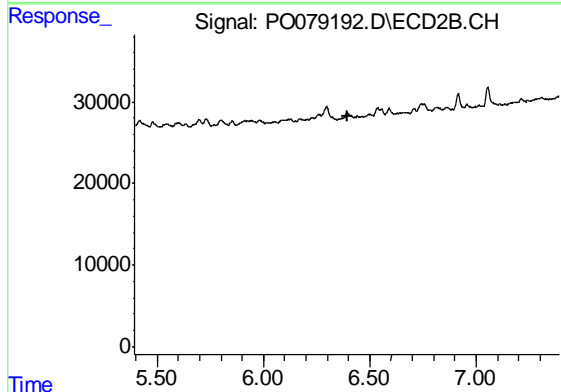
#30 AR-1254-5

R.T.: 6.916 min
 Delta R.T.: -0.002 min
 Response: 22245
 Conc: 11.17 ng/ml



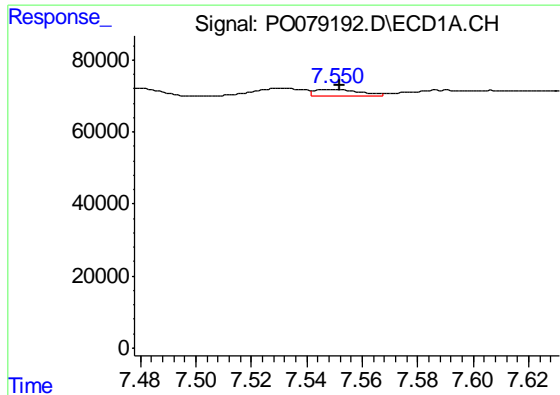
#31 AR-1260-1

R.T.: 7.288 min
 Delta R.T.: 0.000 min
 Response: 15898
 Conc: 4.77 ng/ml



#31 AR-1260-1

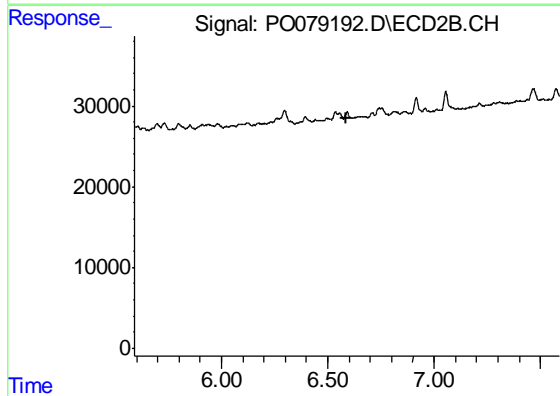
R.T.: 0.000 min
 Exp R.T. : 6.393 min
 Response: 0
 Conc: N.D.



#32 AR-1260-2

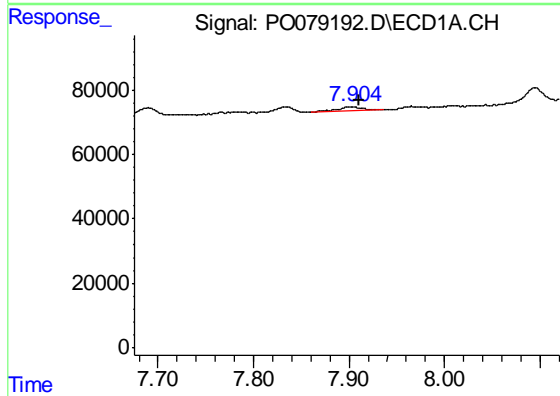
R.T.: 7.550 min
 Delta R.T.: -0.002 min
 Response: 22174
 Conc: 5.71 ng/ml

Instrument :
 ECD_O
 ClientSampleId :
 1966-1969



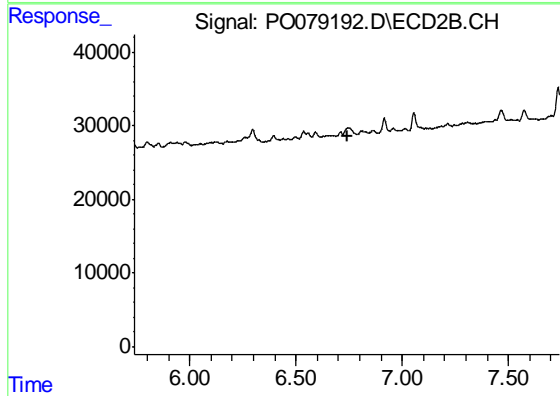
#32 AR-1260-2

R.T.: 0.000 min
 Exp R.T. : 6.590 min
 Response: 0
 Conc: N.D.



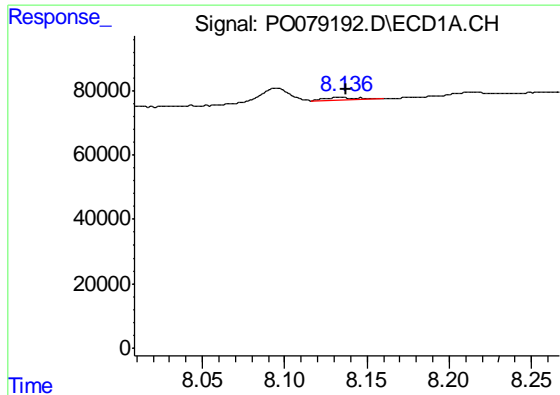
#33 AR-1260-3

R.T.: 7.905 min
 Delta R.T.: -0.006 min
 Response: 24910
 Conc: 8.23 ng/ml



#33 AR-1260-3

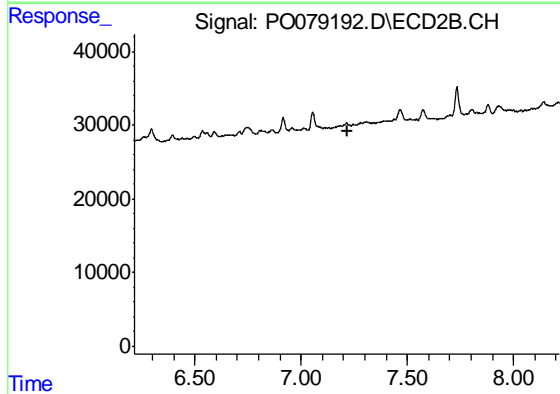
R.T.: 0.000 min
 Exp R.T. : 6.740 min
 Response: 0
 Conc: N.D.



#34 AR-1260-4

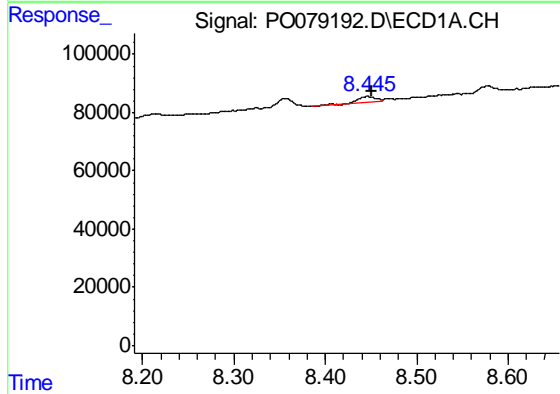
R.T.: 8.134 min
 Delta R.T.: -0.003 min
 Response: 13537
 Conc: 4.13 ng/ml

Instrument :
 ECD_O
 ClientSampleId :
 1966-1969



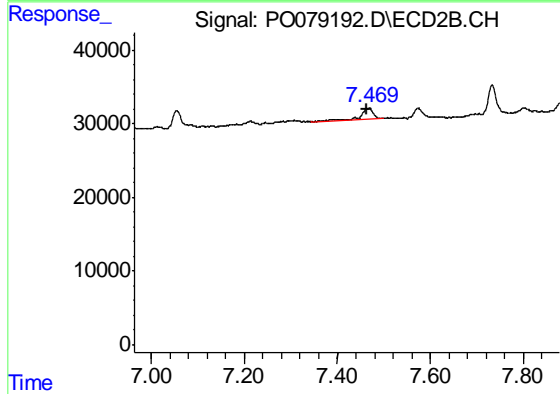
#34 AR-1260-4

R.T.: 0.000 min
 Exp R.T. : 7.216 min
 Response: 0
 Conc: N.D.



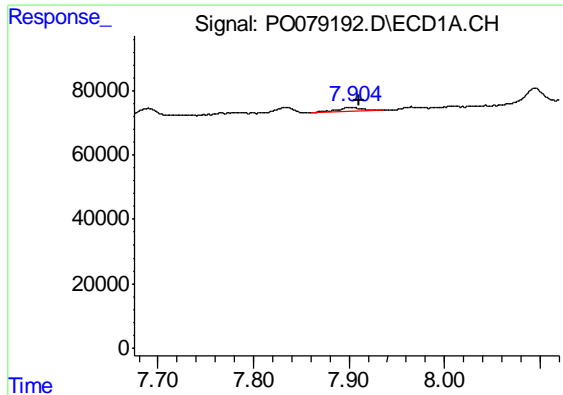
#35 AR-1260-5

R.T.: 8.446 min
 Delta R.T.: -0.005 min
 Response: 25816
 Conc: 4.03 ng/ml



#35 AR-1260-5

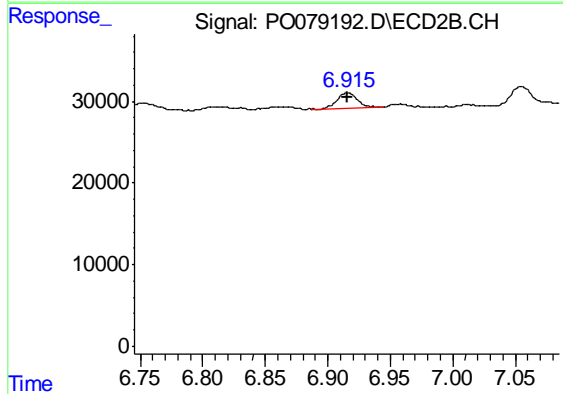
R.T.: 7.469 min
 Delta R.T.: 0.005 min
 Response: 29107
 Conc: 8.22 ng/ml



#36 AR-1262-1

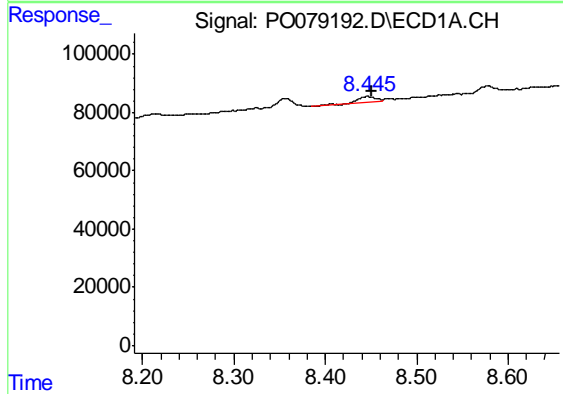
R.T.: 7.905 min
 Delta R.T.: -0.006 min
 Response: 24910
 Conc: 6.06 ng/ml

Instrument :
 ECD_O
 ClientSampleId :
 1966-1969



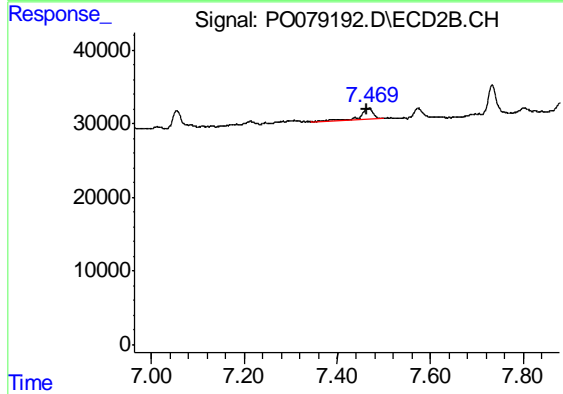
#36 AR-1262-1

R.T.: 6.916 min
 Delta R.T.: 0.000 min
 Response: 22245
 Conc: 21.34 ng/ml



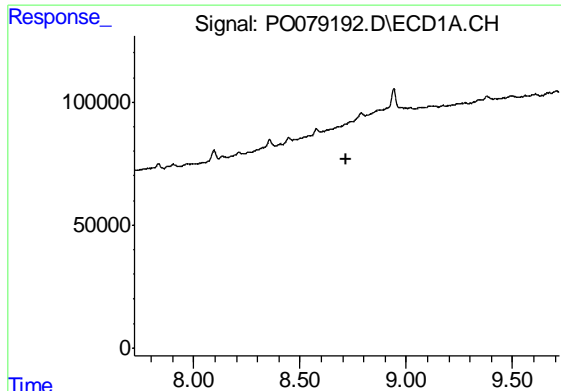
#37 AR-1262-2

R.T.: 8.446 min
 Delta R.T.: -0.005 min
 Response: 25816
 Conc: 3.88 ng/ml



#37 AR-1262-2

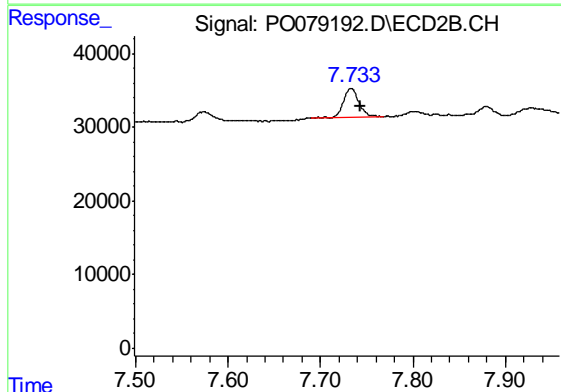
R.T.: 7.469 min
 Delta R.T.: 0.006 min
 Response: 29107
 Conc: 8.25 ng/ml



#38 AR-1262-3

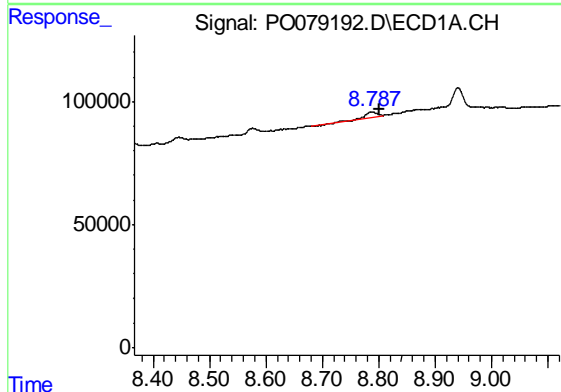
R.T.: 0.000 min
 Exp R.T. : 8.721 min
 Response: 0
 Conc: N.D.

Instrument :
 ECD_O
 ClientSampleId :
 1966-1969



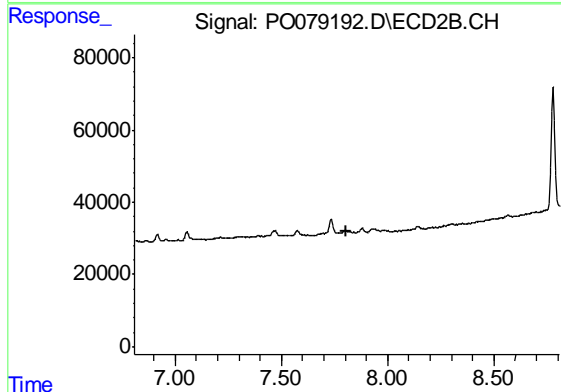
#38 AR-1262-3

R.T.: 7.733 min
 Delta R.T.: -0.010 min
 Response: 46387
 Conc: 32.36 ng/ml



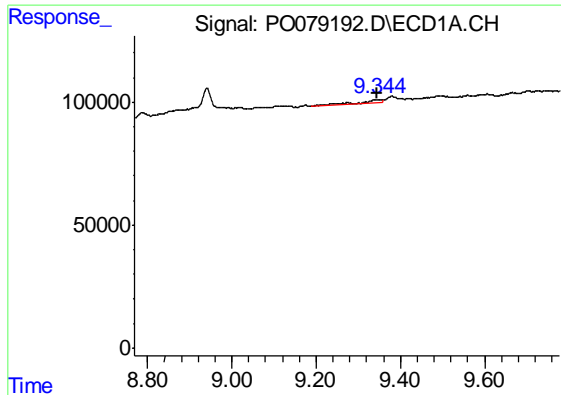
#39 AR-1262-4

R.T.: 8.787 min
 Delta R.T.: -0.014 min
 Response: 20086
 Conc: 5.40 ng/ml



#39 AR-1262-4

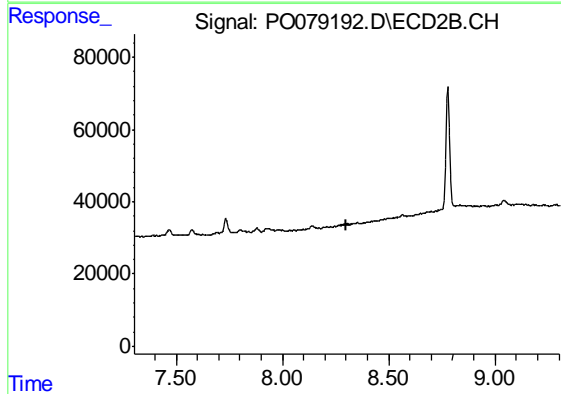
R.T.: 0.000 min
 Exp R.T. : 7.808 min
 Response: 0
 Conc: N.D.



#40 AR-1262-5

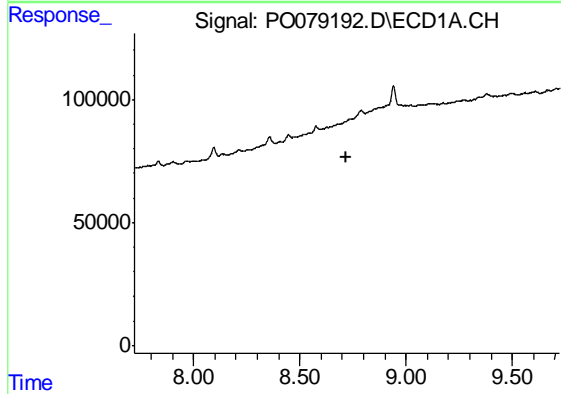
R.T.: 9.345 min
 Delta R.T.: 0.000 min
 Response: 43974
 Conc: 18.15 ng/ml

Instrument :
 ECD_O
 ClientSampleId :
 1966-1969



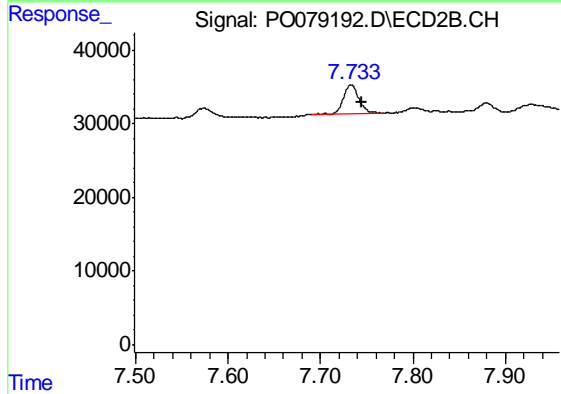
#40 AR-1262-5

R.T.: 0.000 min
 Exp R.T. : 8.303 min
 Response: 0
 Conc: N.D.



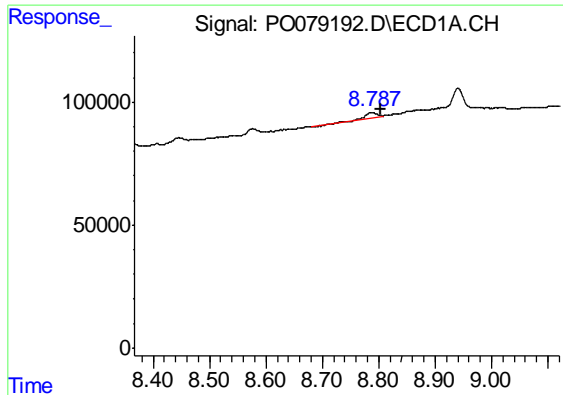
#41 AR-1268-1

R.T.: 0.000 min
 Exp R.T. : 8.721 min
 Response: 0
 Conc: N.D.



#41 AR-1268-1

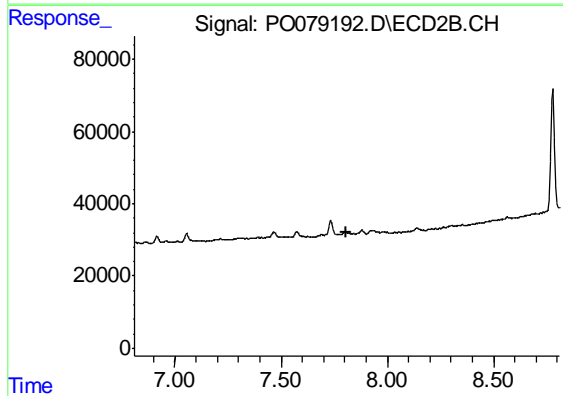
R.T.: 7.733 min
 Delta R.T.: -0.011 min
 Response: 46387
 Conc: 10.56 ng/ml



#42 AR-1268-2

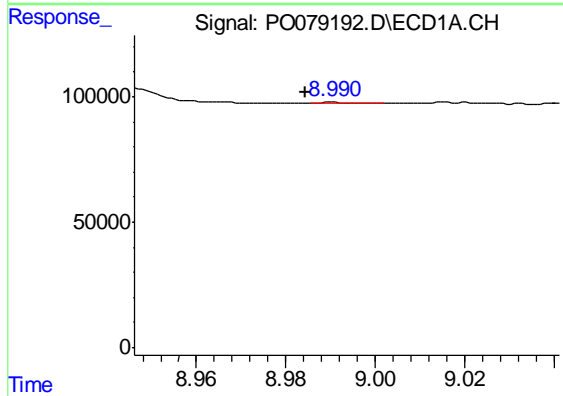
R.T.: 8.787 min
 Delta R.T.: -0.016 min
 Response: 20086
 Conc: 2.69 ng/ml

Instrument :
 ECD_O
 ClientSampled :
 1966-1969



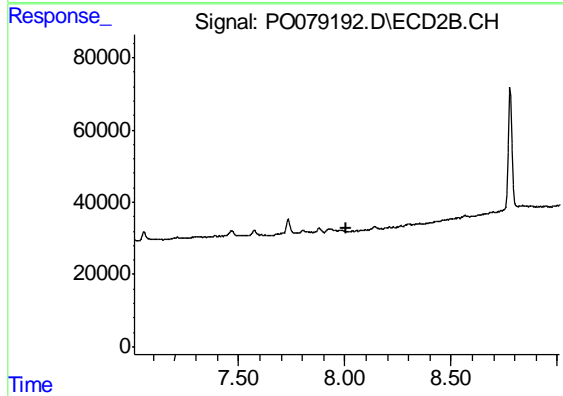
#42 AR-1268-2

R.T.: 0.000 min
 Exp R.T. : 7.810 min
 Response: 0
 Conc: N.D.



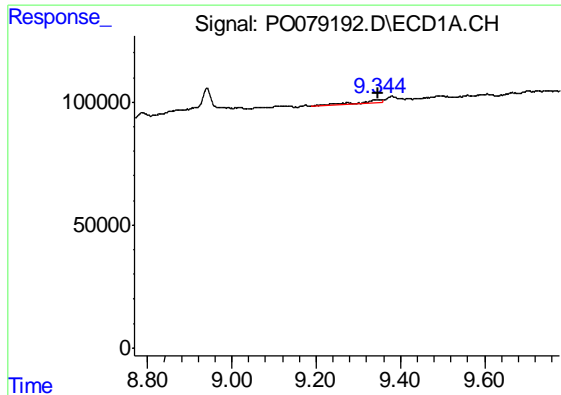
#43 AR-1268-3

R.T.: 8.991 min
 Delta R.T.: 0.006 min
 Response: 2916
 Conc: 0.46 ng/ml



#43 AR-1268-3

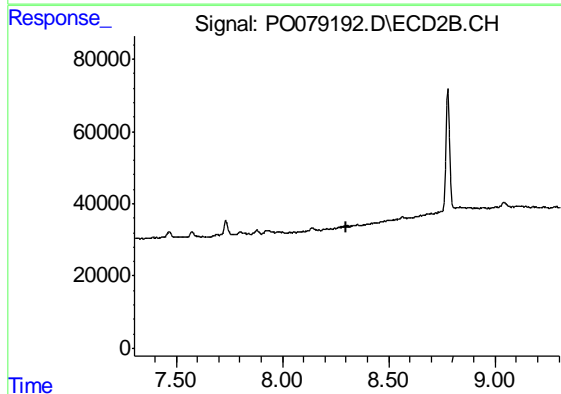
R.T.: 0.000 min
 Exp R.T. : 8.010 min
 Response: 0
 Conc: N.D.



#44 AR-1268-4

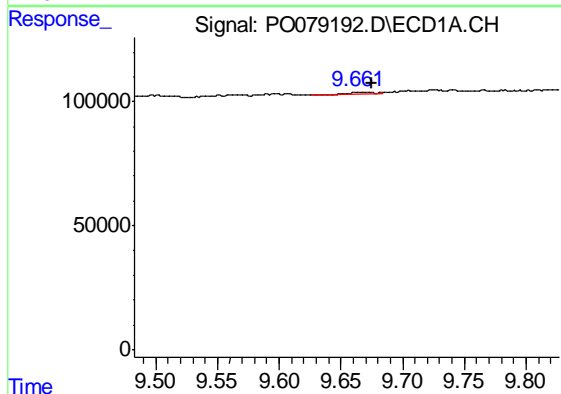
R.T.: 9.345 min
 Delta R.T.: -0.001 min
 Response: 43974
 Conc: 17.08 ng/ml

Instrument :
 ECD_O
 ClientSampleId :
 1966-1969



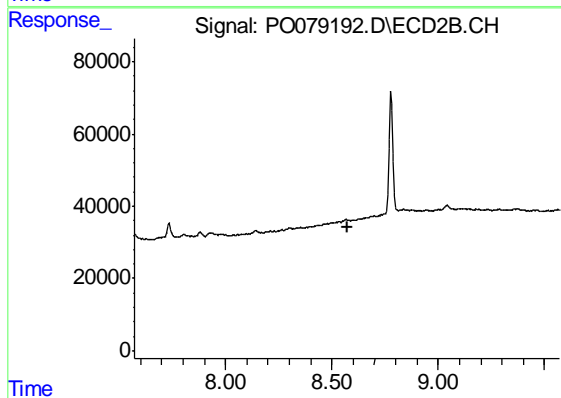
#44 AR-1268-4

R.T.: 0.000 min
 Exp R.T. : 8.303 min
 Response: 0
 Conc: N.D.



#45 AR-1268-5

R.T.: 9.663 min
 Delta R.T.: -0.012 min
 Response: 13100
 Conc: 0.65 ng/ml



#45 AR-1268-5

R.T.: 0.000 min
 Exp R.T. : 8.571 min
 Response: 0
 Conc: N.D.