

Data Path : Z:\pestpcbsrv\HPCHEM1\ECD_O\Data\P0062524\
 Data File : P0104440.D
 Signal(s) : Signal #1: ECD1A.ch Signal #2: ECD2B.ch
 Acq On : 25 Jun 2024 17:31
 Operator : YP/AJ
 Sample : PB161685BL
 Misc :
 ALS Vial : 19 Sample Multiplier: 1

Instrument :
 ECD_O
 ClientSampleId :
 PB161685BL

Integration File signal 1: autoint1.e
 Integration File signal 2: autoint2.e
 Quant Time: Jun 26 01:05:03 2024
 Quant Method : Z:\pestpcbsrv\HPCHEM1\ECD_O\methods\P0062024.M
 Quant Title : GC EXTRACTABLES
 QLast Update : Fri Jun 21 04:29:14 2024
 Response via : Initial Calibration
 Integrator: ChemStation

Volume Inj. : 2 µl
 Signal #1 Phase : ZB-MR2 Signal #2 Phase: ZB-MR2
 Signal #1 Info : 30Mx0.32mmx 0.50µ Signal #2 Info : 30M x 0.32mm x 0.25µm

Compound	RT#1	RT#2	Resp#1	Resp#2	ng/ml	ng/ml

System Monitoring Compounds						
1) SA Tetrachlo...	4.408	3.549	154.6E6	28132926	19.458	18.744
2) SA Decachlor...	10.116	8.468	95379031	57724939	17.752	17.986
Target Compounds						
3) L1 AR-1016-1	5.555	4.633	3509479	590959	12.993	13.675
4) L1 AR-1016-2	5.583	4.633	618612	590959	1.645	8.140 #
5) L1 AR-1016-3	5.655	4.809	558872	30211	2.306	0.748 #
6) L1 AR-1016-4	5.752	4.850	425425	169761	2.190	7.304 #
7) L1 AR-1016-5	6.026	5.062	86734	647549	0.451	17.907 #
8) L2 AR-1221-1	4.611	3.747	171477	28550	1.635	1.586
9) L2 AR-1221-2	4.711	3.843	2411520	664164	29.982	41.631 #
10) L2 AR-1221-3	4.767	3.918	93374	103140	0.412	2.172 #
11) L3 AR-1232-1	4.767	3.910	93374	63913	0.477	1.602 #
12) L3 AR-1232-2	5.292	4.633	959806	590959	8.328	15.990 #
13) L3 AR-1232-3	5.583	4.809	618612	30211	3.259	1.504 #
14) L3 AR-1232-4	5.752	4.887	425425	25670	4.468	1.838 #
15) L3 AR-1232-5	5.838	5.062	252448	647549	3.443	37.036 #
16) L4 AR-1242-1	5.555	4.633	3509479	590959	15.253	16.113
17) L4 AR-1242-2	5.583	4.633	618612	590959	1.913	9.588 #
18) L4 AR-1242-3	5.655	4.809	558872	30211	2.655	0.882 #
19) L4 AR-1242-4	5.752	4.887	425425	25670	2.511	0.945 #
20) L4 AR-1242-5	6.463	5.387	385109	102397	2.208	2.771 #
21) L5 AR-1248-1	5.555	4.633	3509479	590959	20.002	20.920
22) L5 AR-1248-2	5.838	4.850	252448	169761	1.039	4.966 #
23) L5 AR-1248-3	6.026	4.887	86734	25670	0.335	0.662 #
24) L5 AR-1248-4	6.443	5.062	356614	647549	1.223	12.659 #
25) L5 AR-1248-5	6.463	5.432	385109	91431	1.357	1.578
26) L6 AR-1254-1	6.419	5.387	698294	102397	2.346	1.466 #
27) L6 AR-1254-2	6.643	5.535	1141581	129714	2.579	2.077
28) L6 AR-1254-3	7.008	5.933	5244050	190534	11.633	1.589 #
29) L6 AR-1254-4	7.283	6.160	58932	28051	0.177	0.350 #
30) L6 AR-1254-5	7.700	6.584	979094	393338	2.831	3.374
31) L7 AR-1260-1	7.159	6.062	1895633	540406	5.565	7.706 #
32) L7 AR-1260-2	7.408	6.263	50121	318384	0.128	3.396 #
33) L7 AR-1260-3	7.797	6.415	1882077	1140589	6.504	12.487 #
34) L7 AR-1260-4	8.059f	6.863	21800629	215102	67.932	2.652 #
35) L7 AR-1260-5	8.327	7.108	40387	1196548	0.064	4.250 #
36) L8 AR-1262-1	7.700	6.584	979094	393338	3.433	5.963 #
37) L8 AR-1262-2	8.327	6.863	40387	215102	0.055	1.951 #
38) L8 AR-1262-3	8.684f	7.371	3218277	2425300	6.430	15.555 #
39) L8 AR-1262-4	8.719	7.438	2525216	1017584	6.644	3.799 #
40) L8 AR-1262-5	9.365	7.935	95207	34253	0.358	0.225 #
41) L9 AR-1268-1	8.684f	7.371	3218277	2425300	3.947	5.618 #

Data Path : Z:\pestpcbsrv\HPCHEM1\ECD_O\Data\P0062524\
 Data File : P0104440.D
 Signal(s) : Signal #1: ECD1A.ch Signal #2: ECD2B.ch
 Acq On : 25 Jun 2024 17:31
 Operator : YP/AJ
 Sample : PB161685BL
 Misc :
 ALS Vial : 19 Sample Multiplier: 1

Instrument :
 ECD_O
 ClientSampleId :
 PB161685BL

Integration File signal 1: autoint1.e
 Integration File signal 2: autoint2.e
 Quant Time: Jun 26 01:05:03 2024
 Quant Method : Z:\pestpcbsrv\HPCHEM1\ECD_O\methods\P0062024.M
 Quant Title : GC EXTRACTABLES
 QLast Update : Fri Jun 21 04:29:14 2024
 Response via : Initial Calibration
 Integrator: ChemStation

Volume Inj. : 2 µl
 Signal #1 Phase : ZB-MR1 Signal #2 Phase: ZB-MR2
 Signal #1 Info : 30Mx0.32mmx 0.50µ Signal #2 Info : 30M x 0.32mm x 0.25µm

	Compound	RT#1	RT#2	Resp#1	Resp#2	ng/ml	ng/ml
42)	L9 AR-1268-2	8.719	7.438	2525216	1017584	3.389	2.352 #
43)	L9 AR-1268-3	8.991f	7.672	49126393	337837	79.258	0.870 #
44)	L9 AR-1268-4	9.365	7.935	95207	34253	0.342	0.214 #
45)	L9 AR-1268-5	9.785	8.229	1367524	323775	0.677	0.266 #

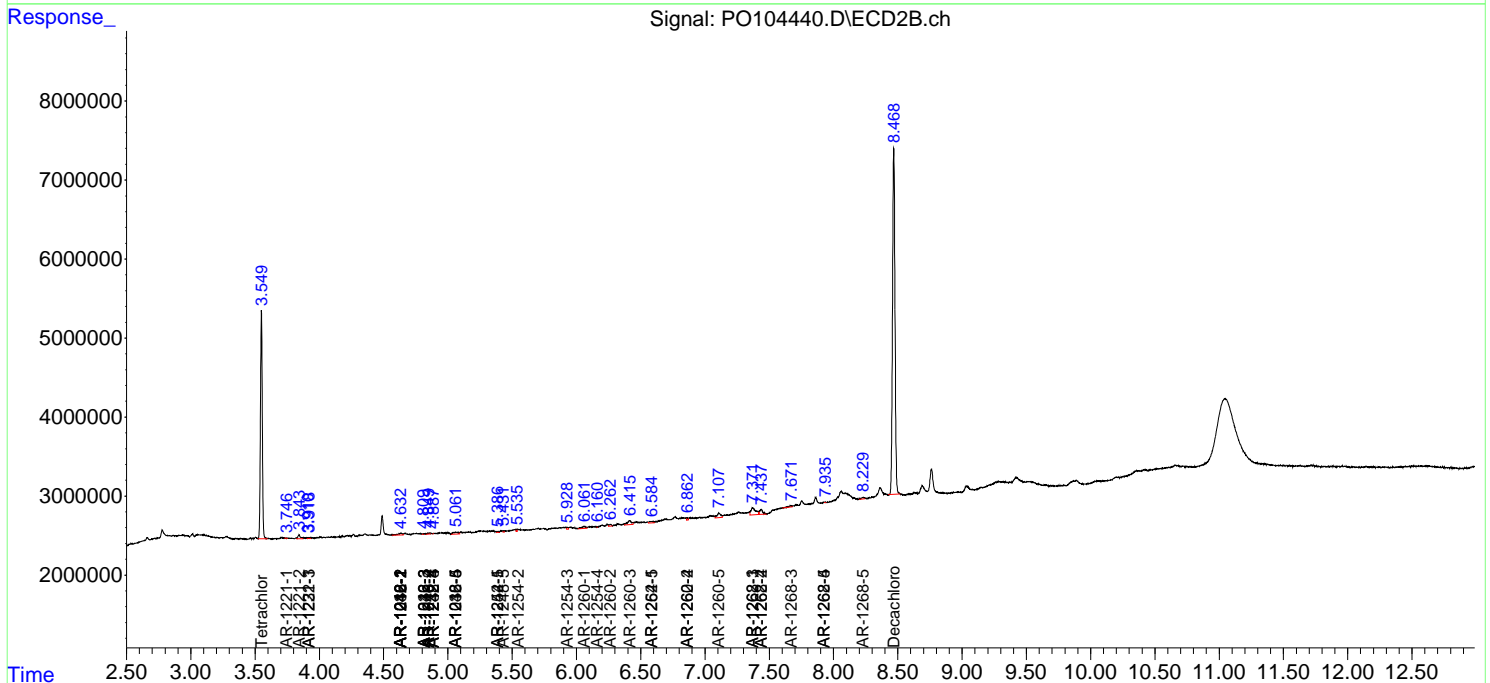
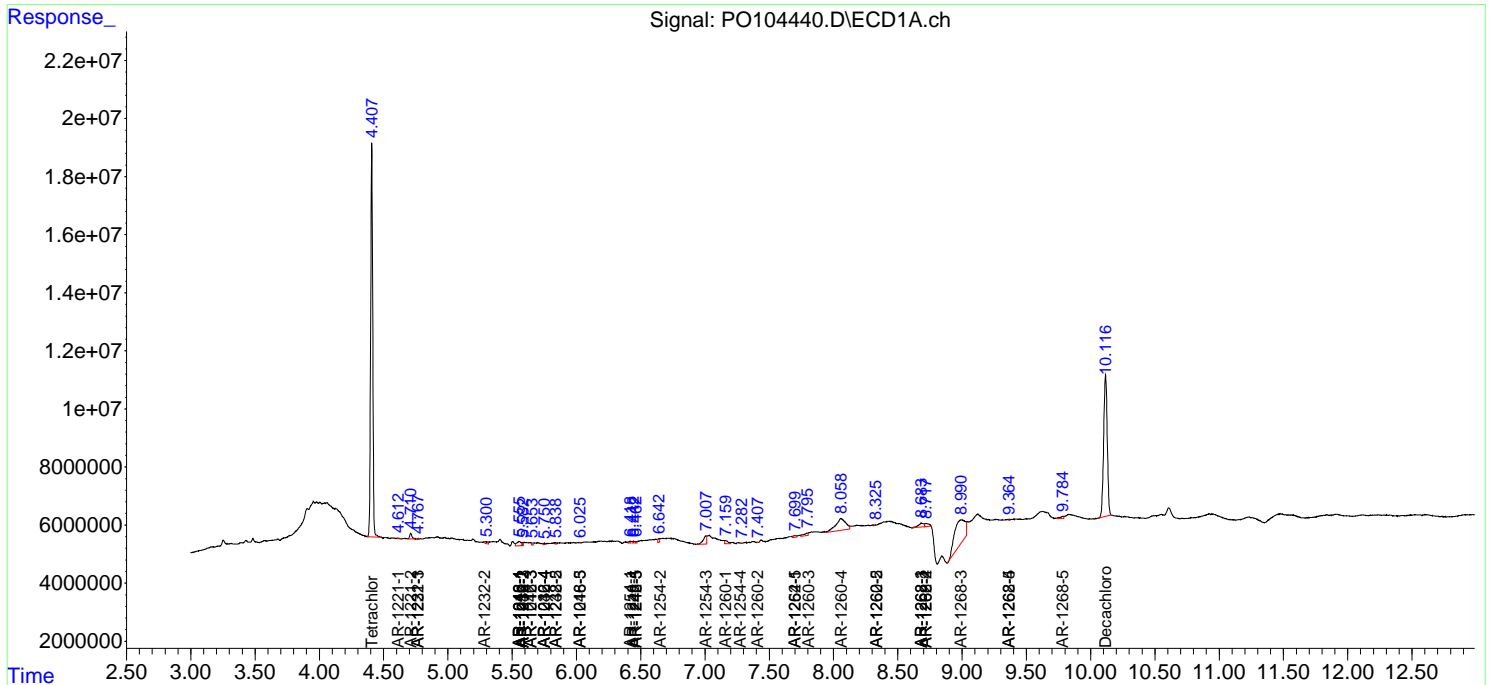
(f)=RT Delta > 1/2 Window (#)=Amounts differ by > 25% (m)=manual int.

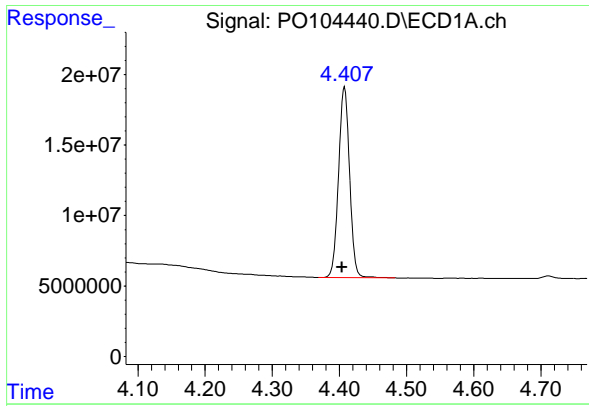
Data Path : Z:\pestpcbsrv\HPCHEM1\ECD_O\Data\PO062524\
 Data File : PO104440.D
 Signal(s) : Signal #1: ECD1A.ch Signal #2: ECD2B.ch
 Acq On : 25 Jun 2024 17:31
 Operator : YP/AJ
 Sample : PB161685BL
 Misc :
 ALS Vial : 19 Sample Multiplier: 1

Instrument :
 ECD_O
 ClientSampleId :
 PB161685BL

Integration File signal 1: autoint1.e
 Integration File signal 2: autoint2.e
 Quant Time: Jun 26 01:05:03 2024
 Quant Method : Z:\pestpcbsrv\HPCHEM1\ECD_O\methods\PO062024.M
 Quant Title : GC EXTRACTABLES
 QLast Update : Fri Jun 21 04:29:14 2024
 Response via : Initial Calibration
 Integrator: ChemStation

Volume Inj. : 2 µl
 Signal #1 Phase : ZB-MR1 Signal #2 Phase: ZB-MR2
 Signal #1 Info : 30Mx0.32mmx 0.50µm Signal #2 Info : 30M x 0.32mm x 0.25µm

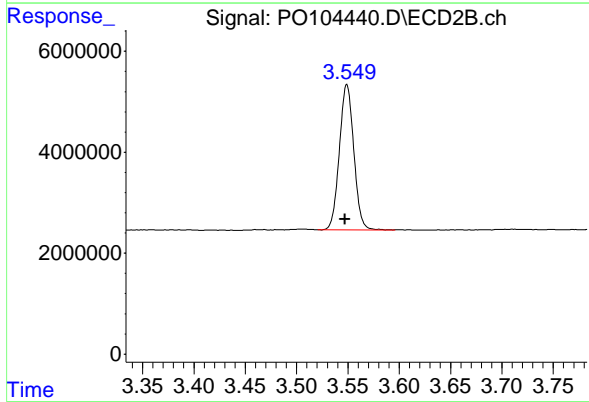




#1 Tetrachloro-m-xylene

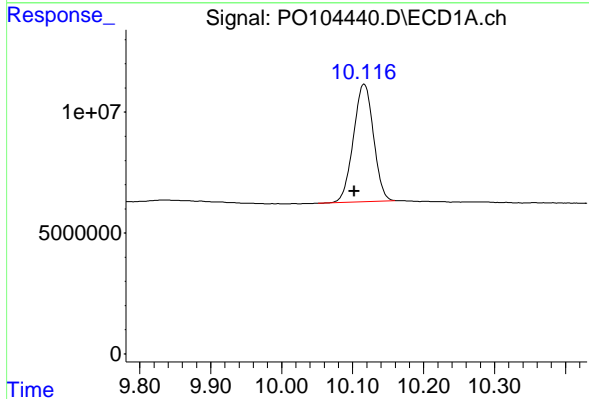
R.T.: 4.408 min
 Delta R.T.: 0.004 min
 Response: 154563533
 Conc: 19.46 ng/ml

Instrument :
 ECD_O
 ClientSampleId :
 PB161685BL



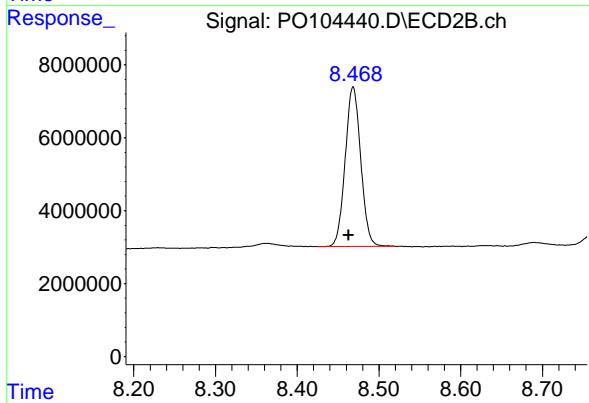
#1 Tetrachloro-m-xylene

R.T.: 3.549 min
 Delta R.T.: 0.002 min
 Response: 28132926
 Conc: 18.74 ng/ml



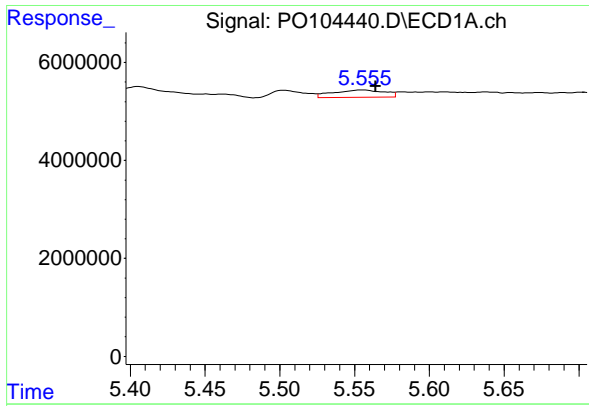
#2 Decachlorobiphenyl

R.T.: 10.116 min
 Delta R.T.: 0.014 min
 Response: 95379031
 Conc: 17.75 ng/ml



#2 Decachlorobiphenyl

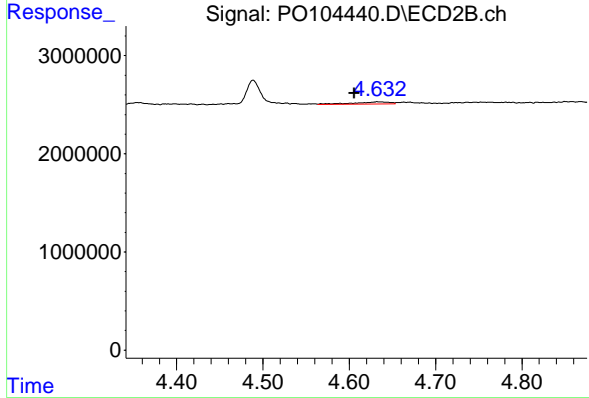
R.T.: 8.468 min
 Delta R.T.: 0.006 min
 Response: 57724939
 Conc: 17.99 ng/ml



#3 AR-1016-1

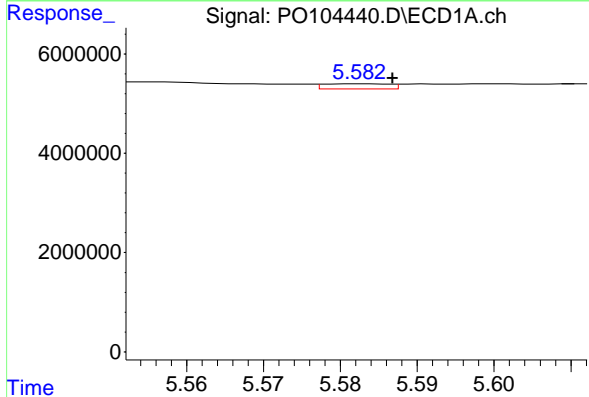
R.T.: 5.555 min
 Delta R.T.: -0.009 min
 Response: 3509479
 Conc: 12.99 ng/ml

Instrument :
 ECD_O
 ClientSampleId :
 PB161685BL



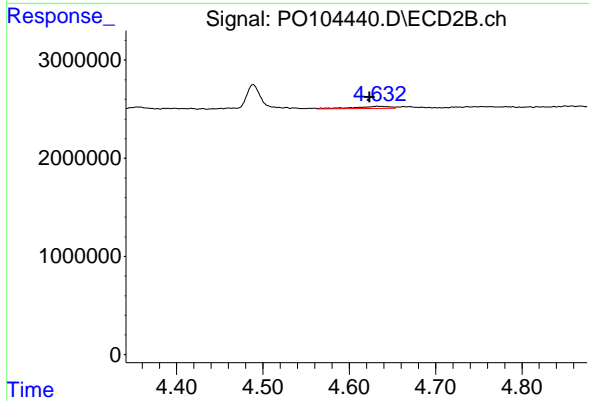
#3 AR-1016-1

R.T.: 4.633 min
 Delta R.T.: 0.027 min
 Response: 590959
 Conc: 13.68 ng/ml



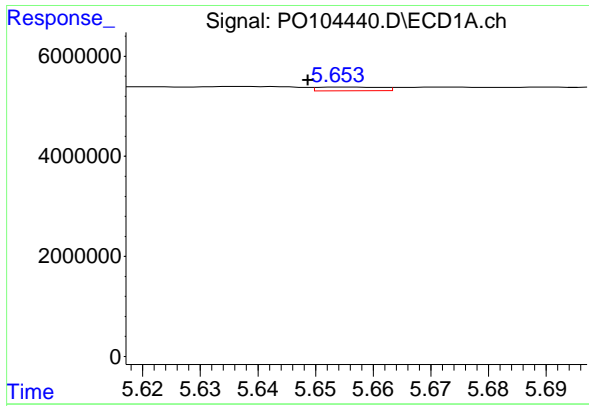
#4 AR-1016-2

R.T.: 5.583 min
 Delta R.T.: -0.004 min
 Response: 618612
 Conc: 1.65 ng/ml



#4 AR-1016-2

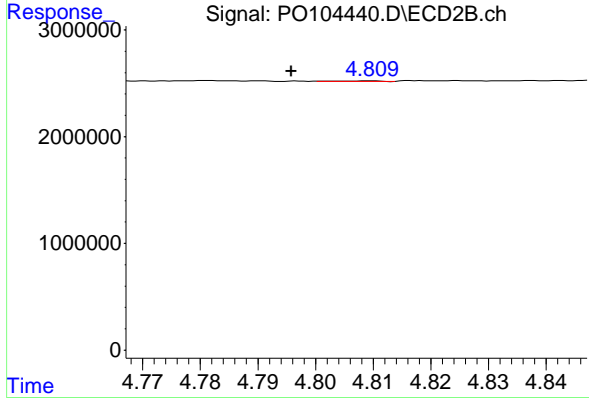
R.T.: 4.633 min
 Delta R.T.: 0.009 min
 Response: 590959
 Conc: 8.14 ng/ml



#5 AR-1016-3

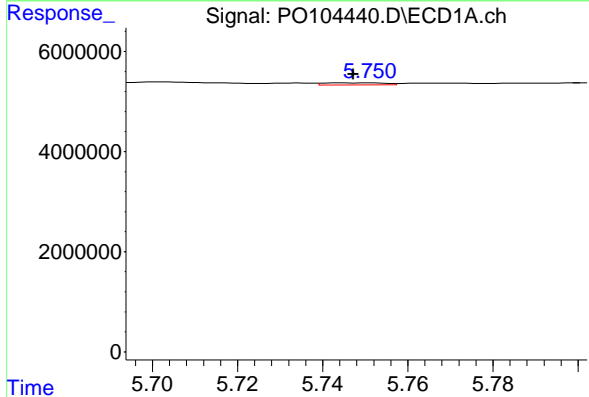
R.T.: 5.655 min
 Delta R.T.: 0.006 min
 Response: 558872
 Conc: 2.31 ng/ml

Instrument :
 ECD_O
 ClientSampleId :
 PB161685BL



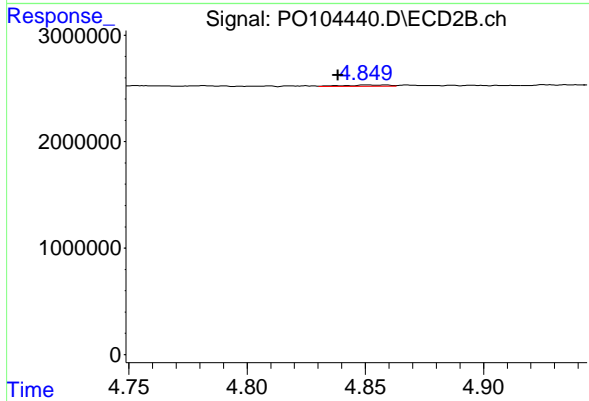
#5 AR-1016-3

R.T.: 4.809 min
 Delta R.T.: 0.013 min
 Response: 30211
 Conc: 0.75 ng/ml



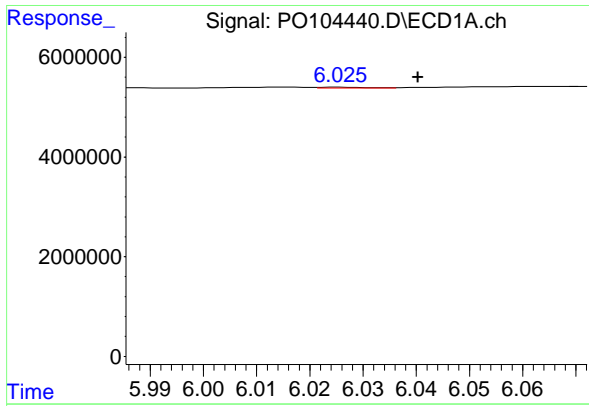
#6 AR-1016-4

R.T.: 5.752 min
 Delta R.T.: 0.004 min
 Response: 425425
 Conc: 2.19 ng/ml



#6 AR-1016-4

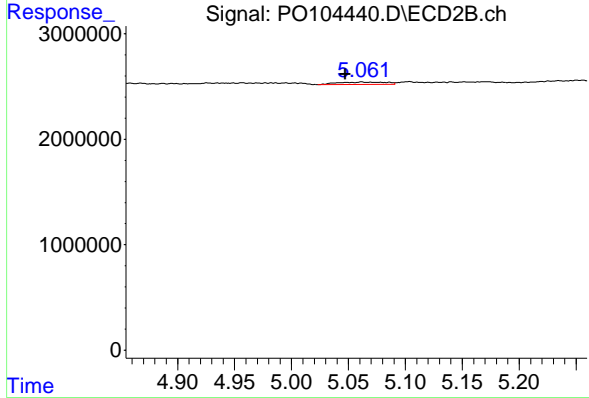
R.T.: 4.850 min
 Delta R.T.: 0.012 min
 Response: 169761
 Conc: 7.30 ng/ml



#7 AR-1016-5

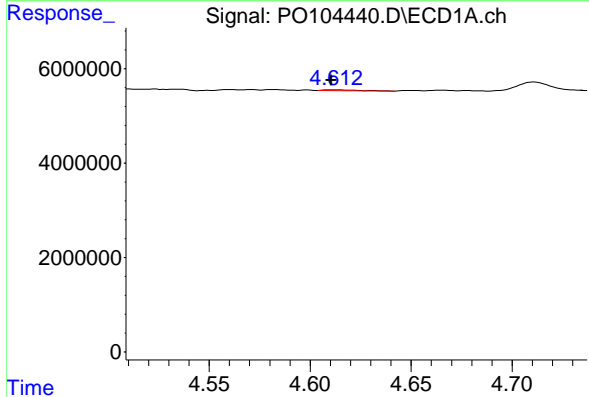
R.T.: 6.026 min
 Delta R.T.: -0.015 min
 Response: 86734
 Conc: 0.45 ng/ml

Instrument :
 ECD_O
 ClientSampleId :
 PB161685BL



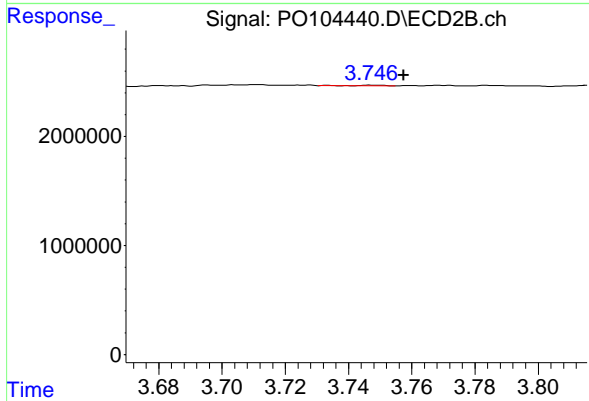
#7 AR-1016-5

R.T.: 5.062 min
 Delta R.T.: 0.015 min
 Response: 647549
 Conc: 17.91 ng/ml



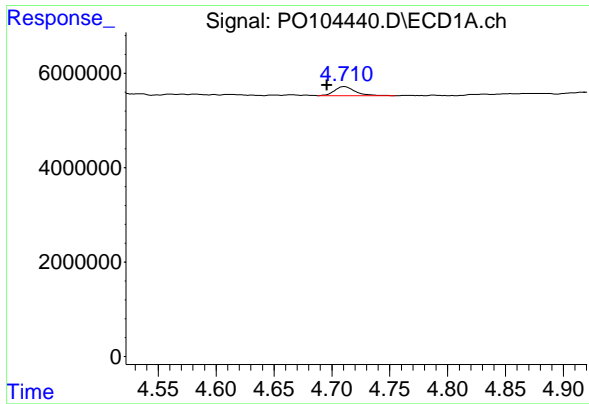
#8 AR-1221-1

R.T.: 4.611 min
 Delta R.T.: 0.000 min
 Response: 171477
 Conc: 1.64 ng/ml



#8 AR-1221-1

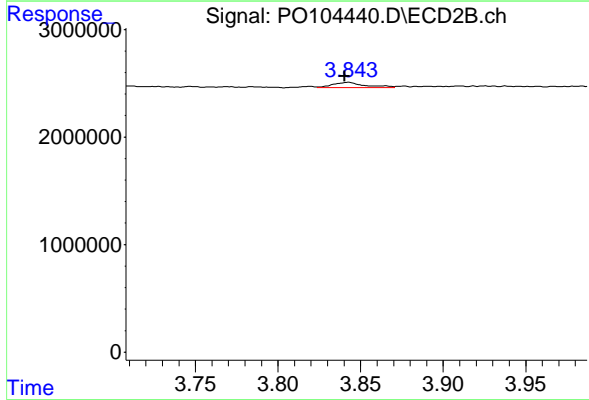
R.T.: 3.747 min
 Delta R.T.: -0.010 min
 Response: 28550
 Conc: 1.59 ng/ml



#9 AR-1221-2

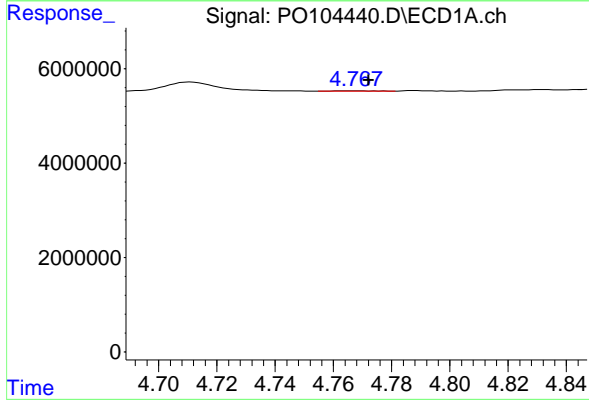
R.T.: 4.711 min
 Delta R.T.: 0.015 min
 Response: 2411520
 Conc: 29.98 ng/ml

Instrument :
 ECD_O
 ClientSampleId :
 PB161685BL



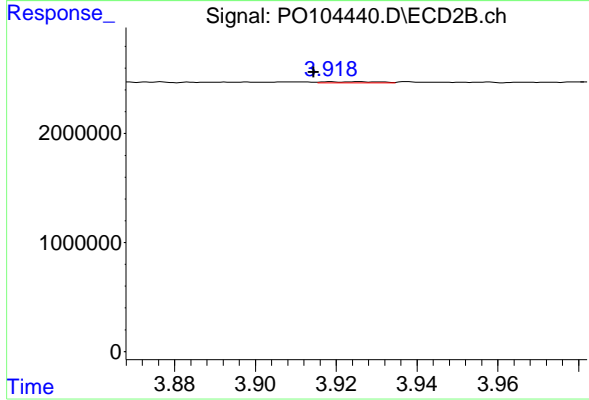
#9 AR-1221-2

R.T.: 3.843 min
 Delta R.T.: 0.002 min
 Response: 664164
 Conc: 41.63 ng/ml



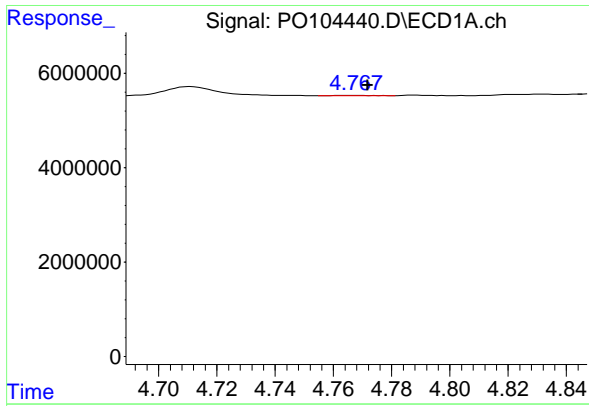
#10 AR-1221-3

R.T.: 4.767 min
 Delta R.T.: -0.005 min
 Response: 93374
 Conc: 0.41 ng/ml



#10 AR-1221-3

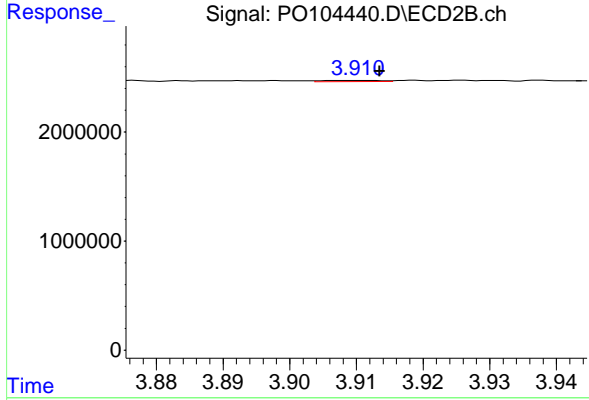
R.T.: 3.918 min
 Delta R.T.: 0.004 min
 Response: 103140
 Conc: 2.17 ng/ml



#11 AR-1232-1

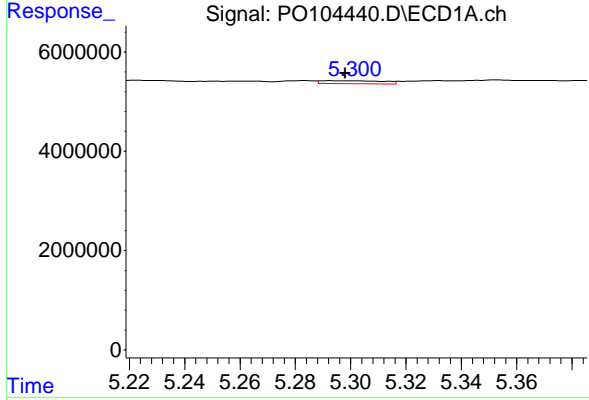
R.T.: 4.767 min
 Delta R.T.: -0.005 min
 Response: 93374
 Conc: 0.48 ng/ml

Instrument :
 ECD_O
 ClientSampleId :
 PB161685BL



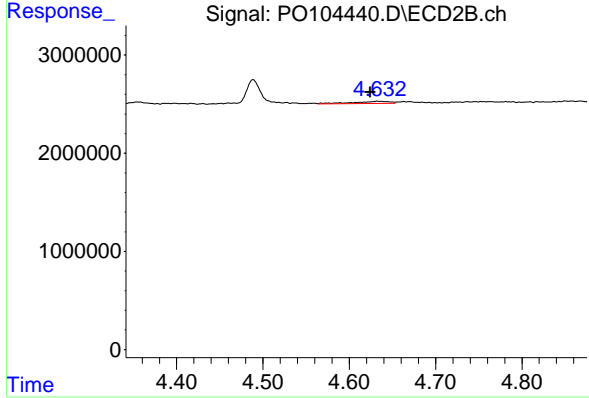
#11 AR-1232-1

R.T.: 3.910 min
 Delta R.T.: -0.003 min
 Response: 63913
 Conc: 1.60 ng/ml



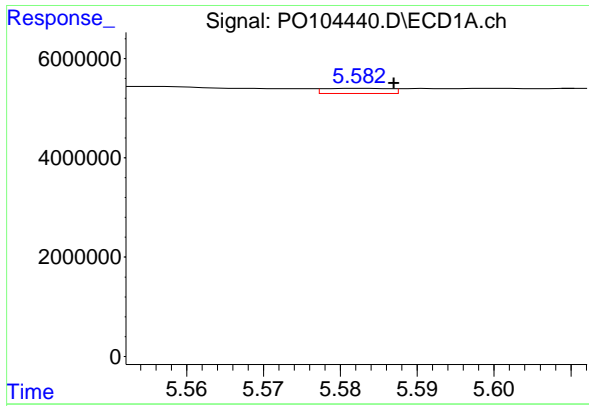
#12 AR-1232-2

R.T.: 5.292 min
 Delta R.T.: -0.006 min
 Response: 959806
 Conc: 8.33 ng/ml



#12 AR-1232-2

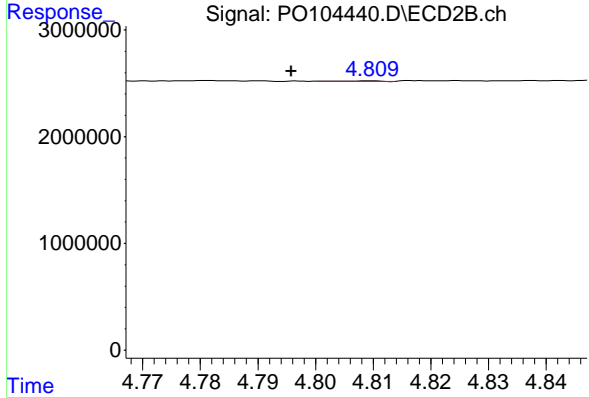
R.T.: 4.633 min
 Delta R.T.: 0.008 min
 Response: 590959
 Conc: 15.99 ng/ml



#13 AR-1232-3

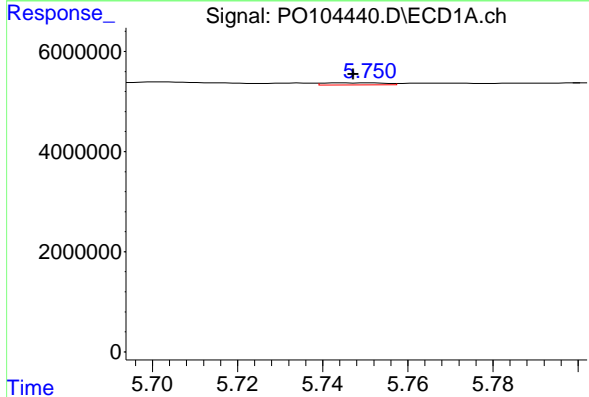
R.T.: 5.583 min
 Delta R.T.: -0.004 min
 Response: 618612
 Conc: 3.26 ng/ml

Instrument :
 ECD_O
 ClientSampleId :
 PB161685BL



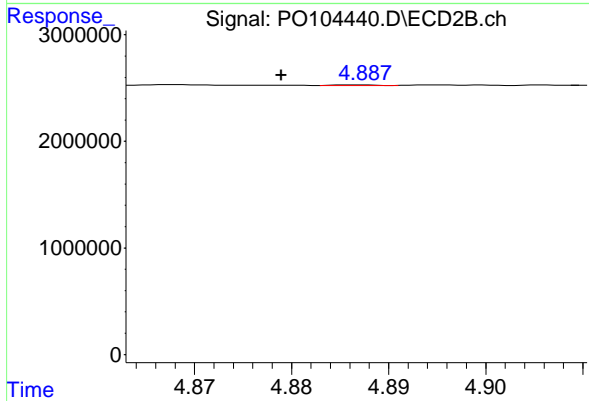
#13 AR-1232-3

R.T.: 4.809 min
 Delta R.T.: 0.013 min
 Response: 30211
 Conc: 1.50 ng/ml



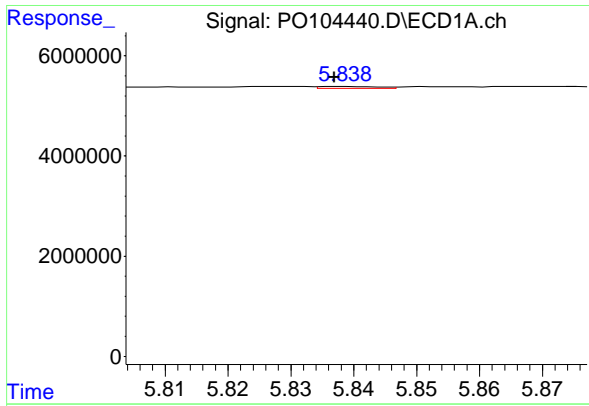
#14 AR-1232-4

R.T.: 5.752 min
 Delta R.T.: 0.004 min
 Response: 425425
 Conc: 4.47 ng/ml



#14 AR-1232-4

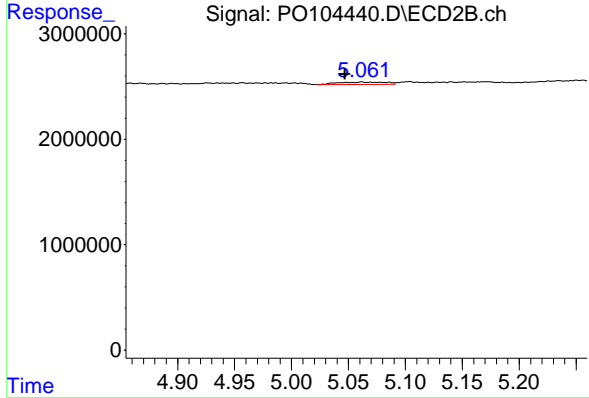
R.T.: 4.887 min
 Delta R.T.: 0.008 min
 Response: 25670
 Conc: 1.84 ng/ml



#15 AR-1232-5

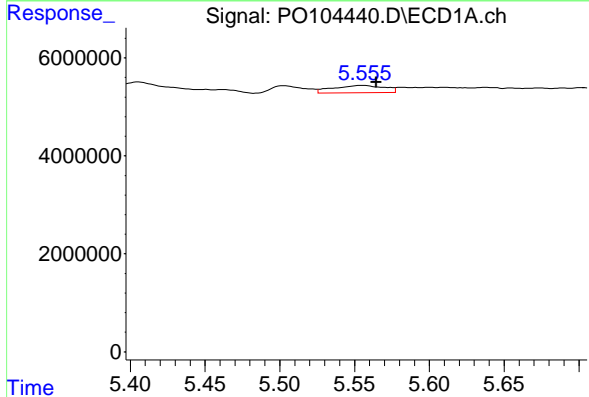
R.T.: 5.838 min
 Delta R.T.: 0.002 min
 Response: 252448
 Conc: 3.44 ng/ml

Instrument :
 ECD_O
 ClientSampleId :
 PB161685BL



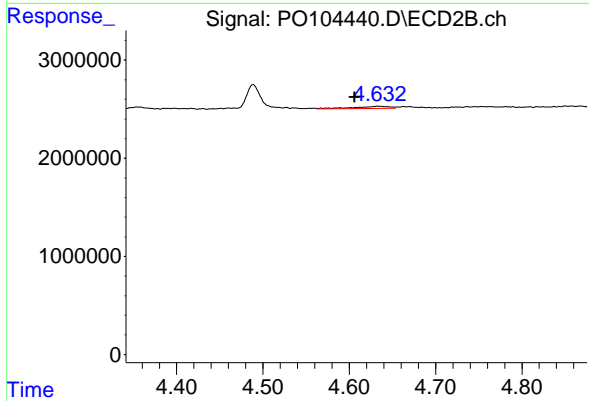
#15 AR-1232-5

R.T.: 5.062 min
 Delta R.T.: 0.015 min
 Response: 647549
 Conc: 37.04 ng/ml



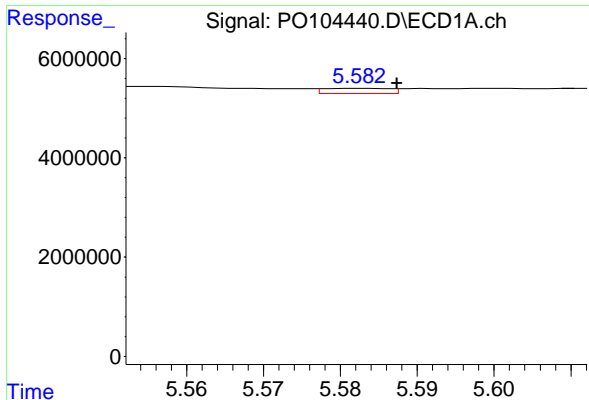
#16 AR-1242-1

R.T.: 5.555 min
 Delta R.T.: -0.009 min
 Response: 3509479
 Conc: 15.25 ng/ml



#16 AR-1242-1

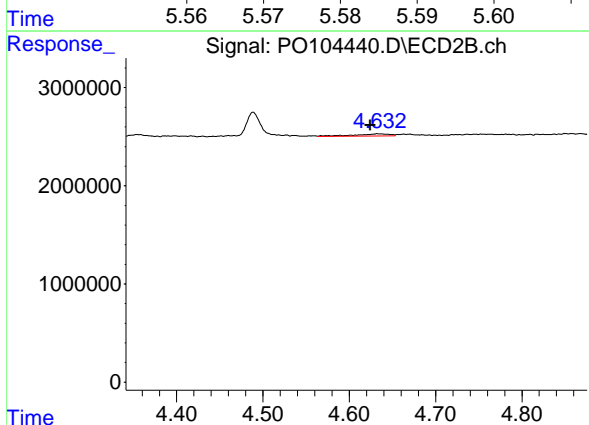
R.T.: 4.633 min
 Delta R.T.: 0.026 min
 Response: 590959
 Conc: 16.11 ng/ml



#17 AR-1242-2

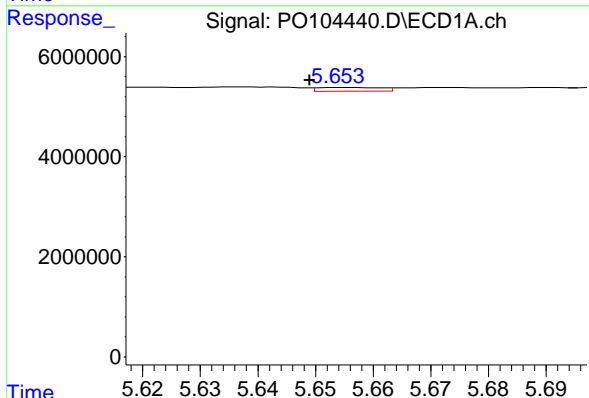
R.T.: 5.583 min
 Delta R.T.: -0.005 min
 Response: 618612
 Conc: 1.91 ng/ml

Instrument :
 ECD_O
 ClientSampleId :
 PB161685BL



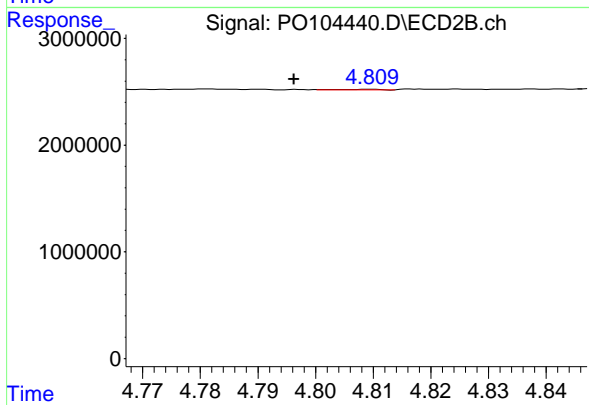
#17 AR-1242-2

R.T.: 4.633 min
 Delta R.T.: 0.008 min
 Response: 590959
 Conc: 9.59 ng/ml



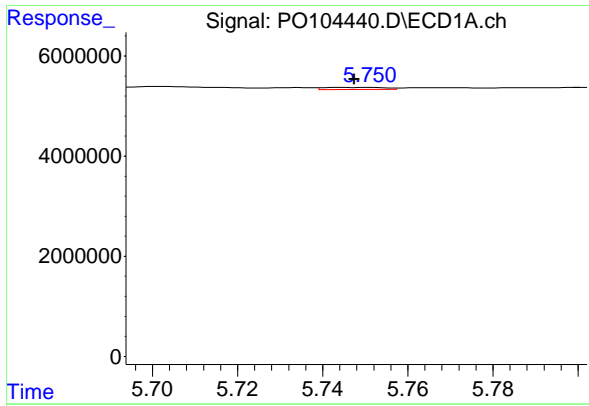
#18 AR-1242-3

R.T.: 5.655 min
 Delta R.T.: 0.006 min
 Response: 558872
 Conc: 2.65 ng/ml



#18 AR-1242-3

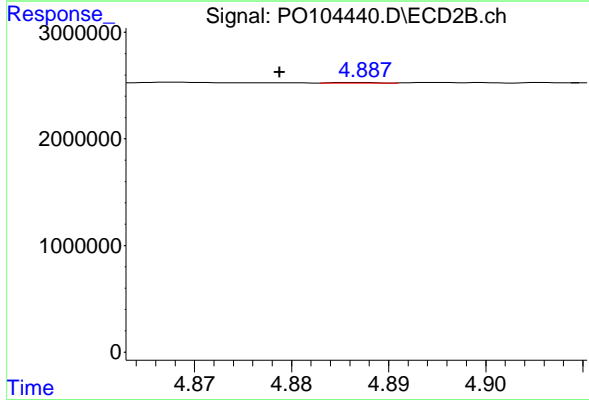
R.T.: 4.809 min
 Delta R.T.: 0.013 min
 Response: 30211
 Conc: 0.88 ng/ml



#19 AR-1242-4

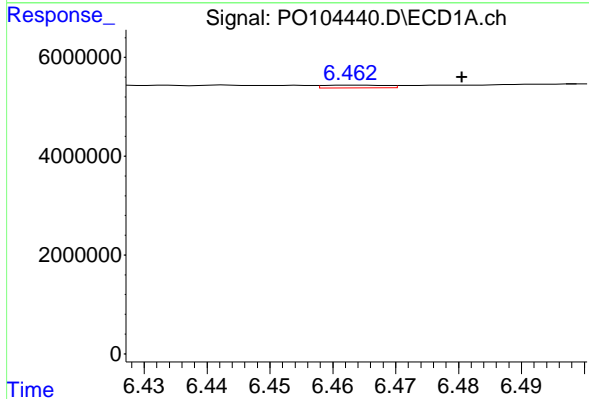
R.T.: 5.752 min
 Delta R.T.: 0.004 min
 Response: 425425
 Conc: 2.51 ng/ml

Instrument :
 ECD_O
 ClientSampleId :
 PB161685BL



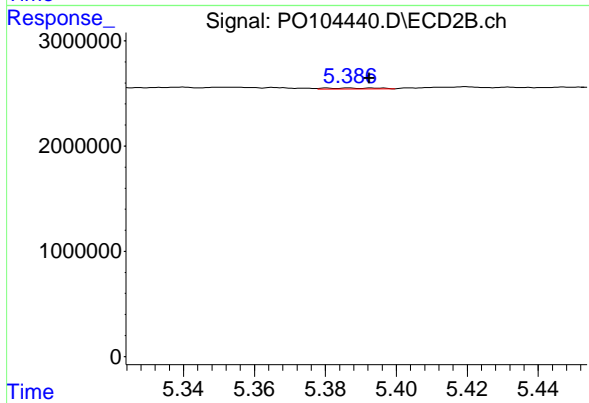
#19 AR-1242-4

R.T.: 4.887 min
 Delta R.T.: 0.008 min
 Response: 25670
 Conc: 0.95 ng/ml



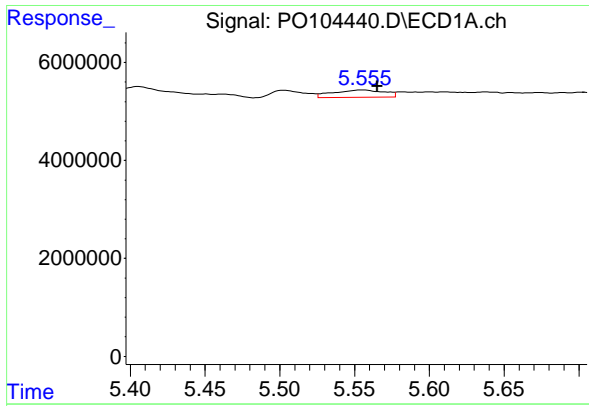
#20 AR-1242-5

R.T.: 6.463 min
 Delta R.T.: -0.017 min
 Response: 385109
 Conc: 2.21 ng/ml



#20 AR-1242-5

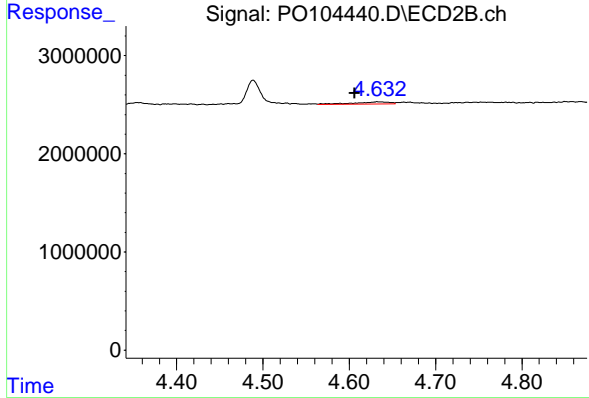
R.T.: 5.387 min
 Delta R.T.: -0.006 min
 Response: 102397
 Conc: 2.77 ng/ml



#21 AR-1248-1

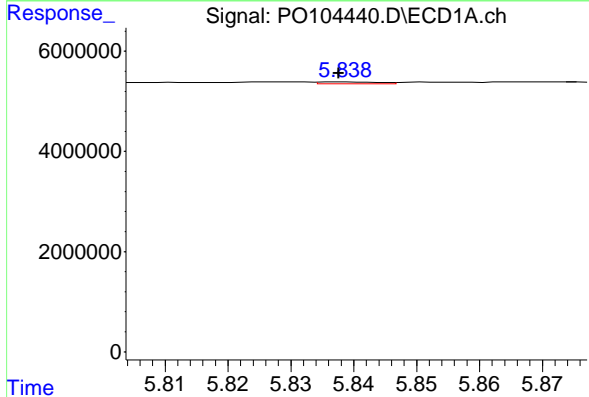
R.T.: 5.555 min
 Delta R.T.: -0.010 min
 Response: 3509479
 Conc: 20.00 ng/ml

Instrument :
 ECD_O
 ClientSampleId :
 PB161685BL



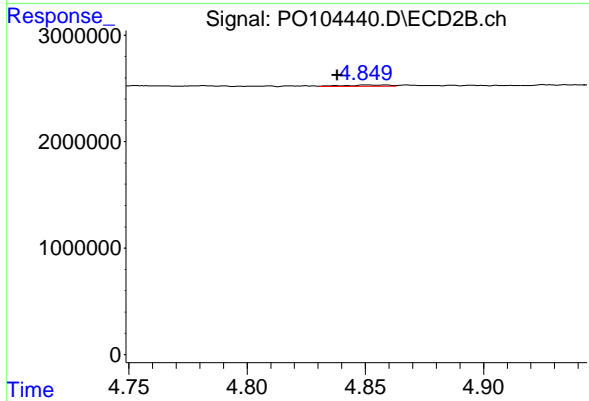
#21 AR-1248-1

R.T.: 4.633 min
 Delta R.T.: 0.026 min
 Response: 590959
 Conc: 20.92 ng/ml



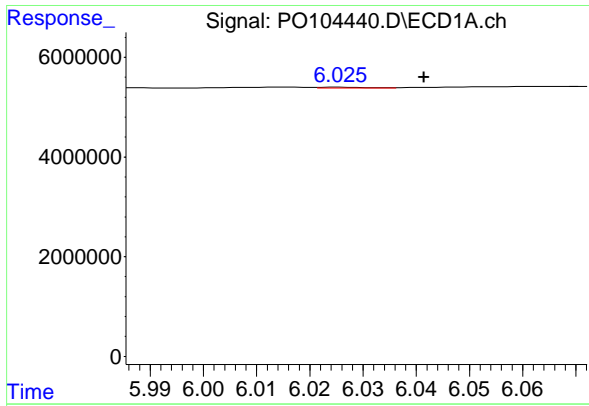
#22 AR-1248-2

R.T.: 5.838 min
 Delta R.T.: 0.000 min
 Response: 252448
 Conc: 1.04 ng/ml



#22 AR-1248-2

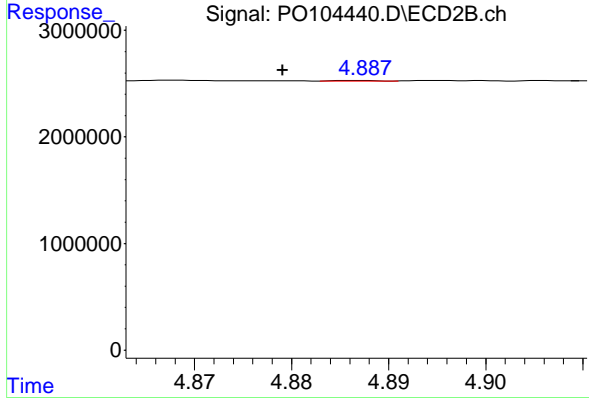
R.T.: 4.850 min
 Delta R.T.: 0.012 min
 Response: 169761
 Conc: 4.97 ng/ml



#23 AR-1248-3

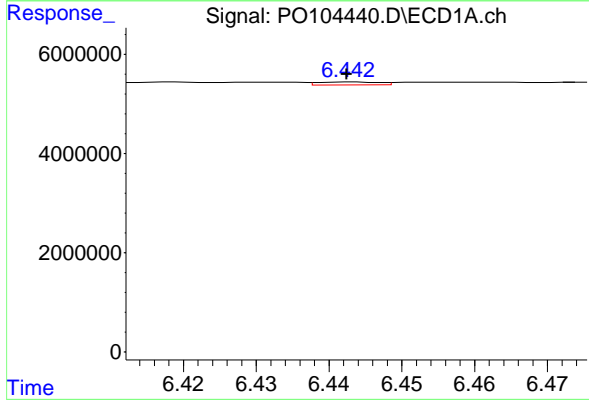
R.T.: 6.026 min
 Delta R.T.: -0.016 min
 Response: 86734
 Conc: 0.34 ng/ml

Instrument :
 ECD_O
 ClientSampleId :
 PB161685BL



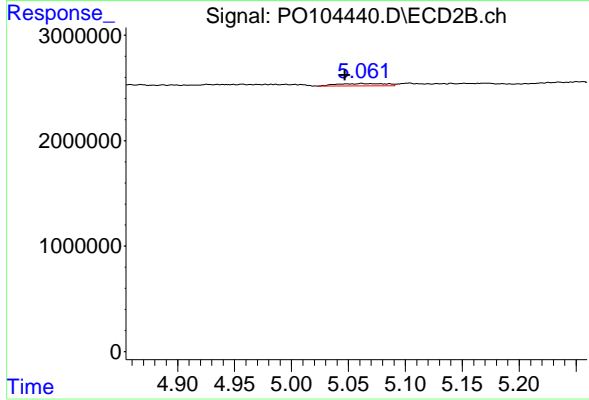
#23 AR-1248-3

R.T.: 4.887 min
 Delta R.T.: 0.008 min
 Response: 25670
 Conc: 0.66 ng/ml



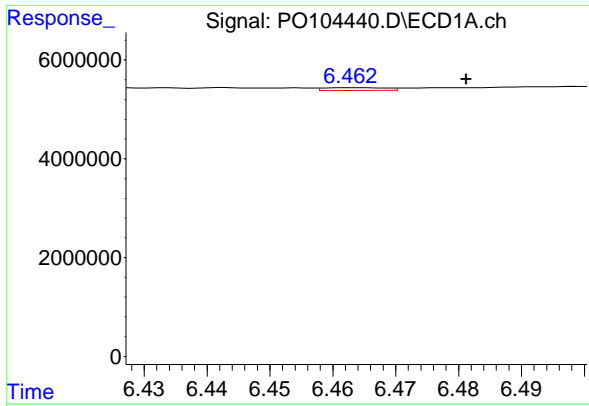
#24 AR-1248-4

R.T.: 6.443 min
 Delta R.T.: 0.000 min
 Response: 356614
 Conc: 1.22 ng/ml



#24 AR-1248-4

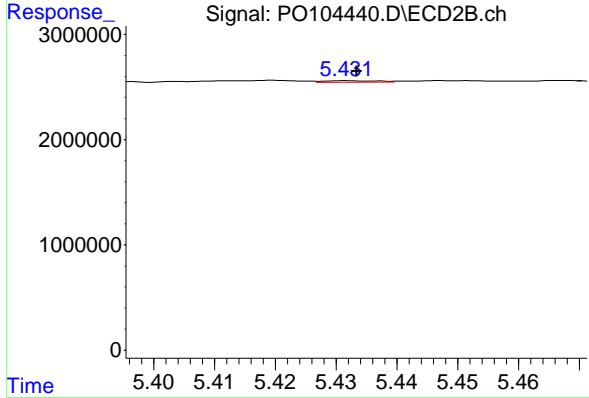
R.T.: 5.062 min
 Delta R.T.: 0.015 min
 Response: 647549
 Conc: 12.66 ng/ml



#25 AR-1248-5

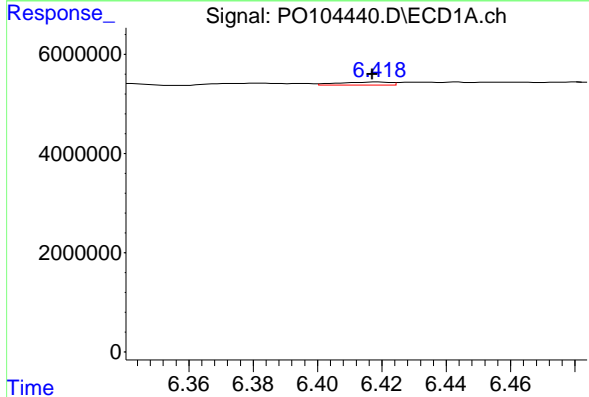
R.T.: 6.463 min
 Delta R.T.: -0.018 min
 Response: 385109
 Conc: 1.36 ng/ml

Instrument :
 ECD_O
 ClientSampleId :
 PB161685BL



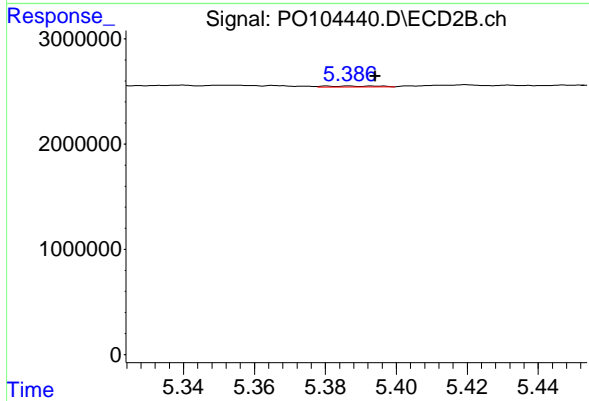
#25 AR-1248-5

R.T.: 5.432 min
 Delta R.T.: -0.002 min
 Response: 91431
 Conc: 1.58 ng/ml



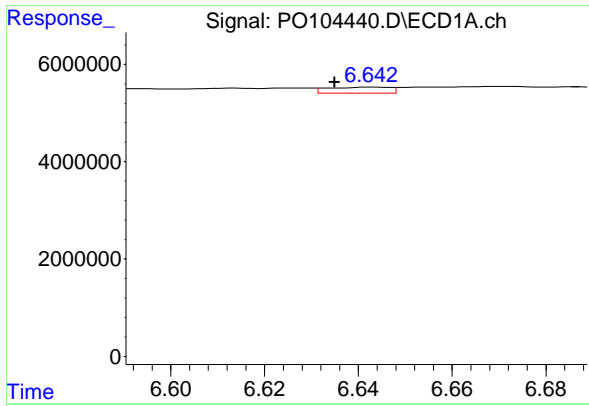
#26 AR-1254-1

R.T.: 6.419 min
 Delta R.T.: 0.002 min
 Response: 698294
 Conc: 2.35 ng/ml



#26 AR-1254-1

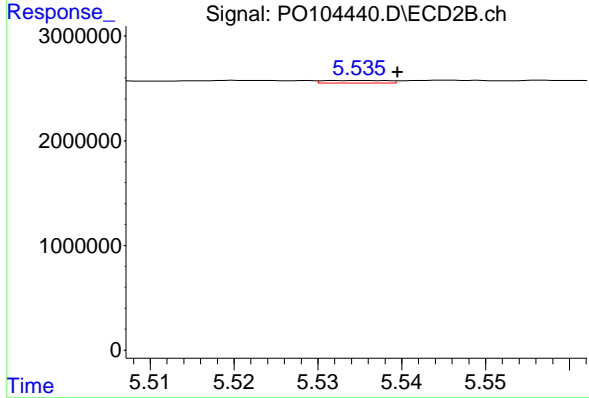
R.T.: 5.387 min
 Delta R.T.: -0.008 min
 Response: 102397
 Conc: 1.47 ng/ml



#27 AR-1254-2

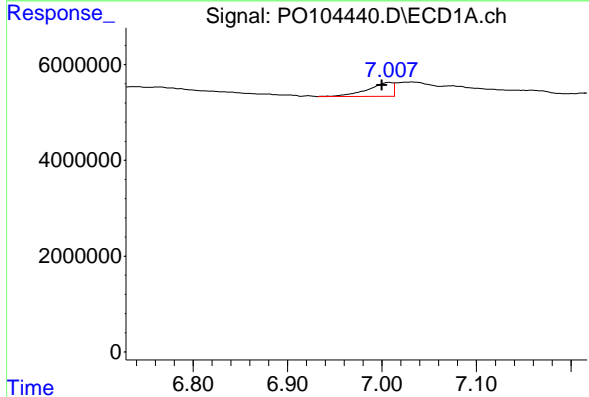
R.T.: 6.643 min
 Delta R.T.: 0.008 min
 Response: 1141581
 Conc: 2.58 ng/ml

Instrument :
 ECD_O
 ClientSampleId :
 PB161685BL



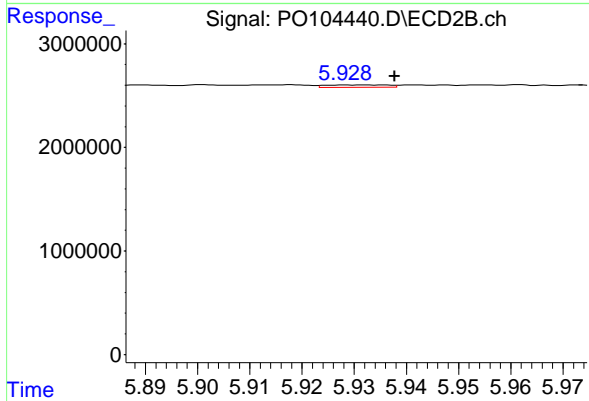
#27 AR-1254-2

R.T.: 5.535 min
 Delta R.T.: -0.005 min
 Response: 129714
 Conc: 2.08 ng/ml



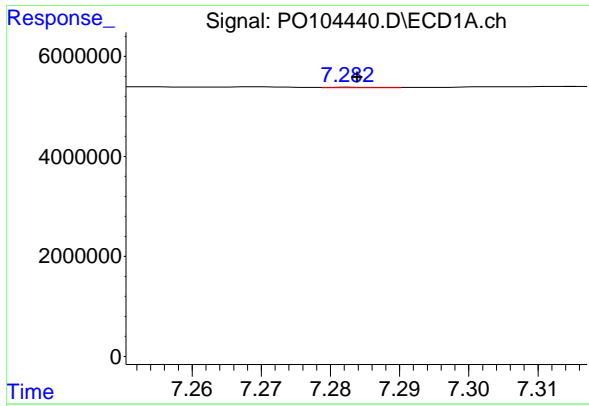
#28 AR-1254-3

R.T.: 7.008 min
 Delta R.T.: 0.008 min
 Response: 5244050
 Conc: 11.63 ng/ml



#28 AR-1254-3

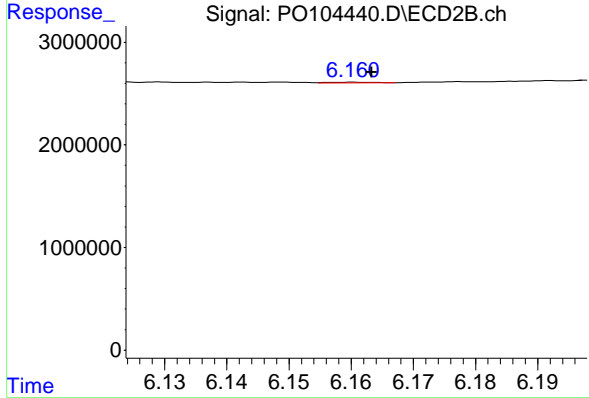
R.T.: 5.933 min
 Delta R.T.: -0.005 min
 Response: 190534
 Conc: 1.59 ng/ml



#29 AR-1254-4

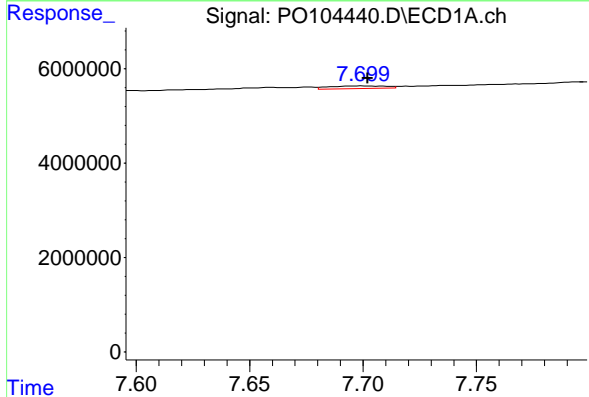
R.T.: 7.283 min
 Delta R.T.: 0.000 min
 Response: 58932
 Conc: 0.18 ng/ml

Instrument :
 ECD_O
 ClientSampleId :
 PB161685BL



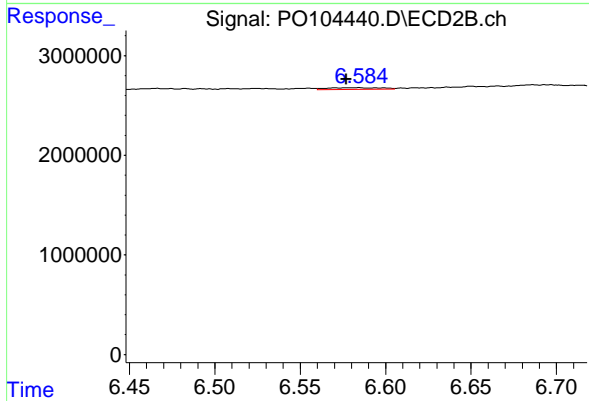
#29 AR-1254-4

R.T.: 6.160 min
 Delta R.T.: -0.003 min
 Response: 28051
 Conc: 0.35 ng/ml



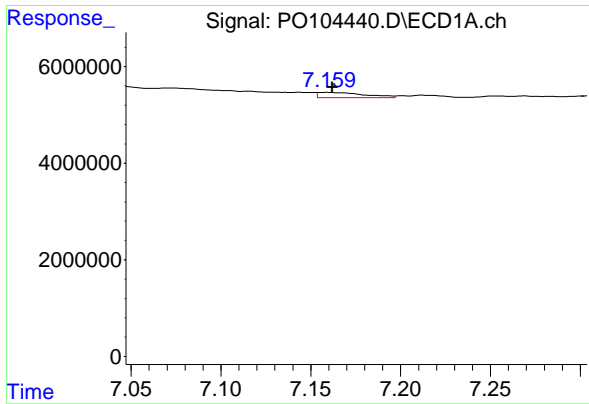
#30 AR-1254-5

R.T.: 7.700 min
 Delta R.T.: -0.002 min
 Response: 979094
 Conc: 2.83 ng/ml



#30 AR-1254-5

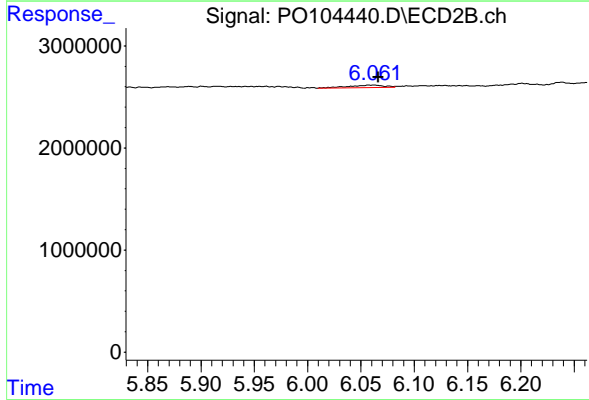
R.T.: 6.584 min
 Delta R.T.: 0.007 min
 Response: 393338
 Conc: 3.37 ng/ml



#31 AR-1260-1

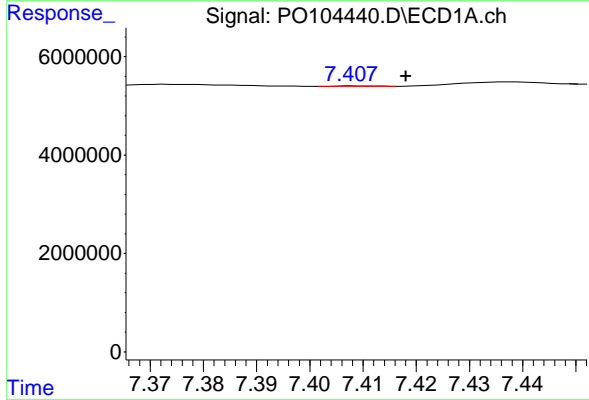
R.T.: 7.159 min
 Delta R.T.: -0.002 min
 Response: 1895633
 Conc: 5.57 ng/ml

Instrument :
 ECD_O
 ClientSampleId :
 PB161685BL



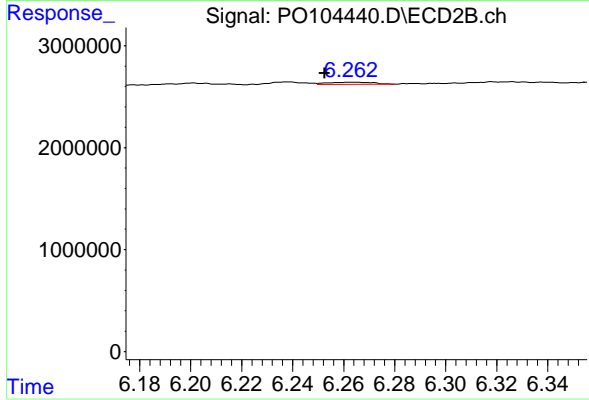
#31 AR-1260-1

R.T.: 6.062 min
 Delta R.T.: -0.004 min
 Response: 540406
 Conc: 7.71 ng/ml



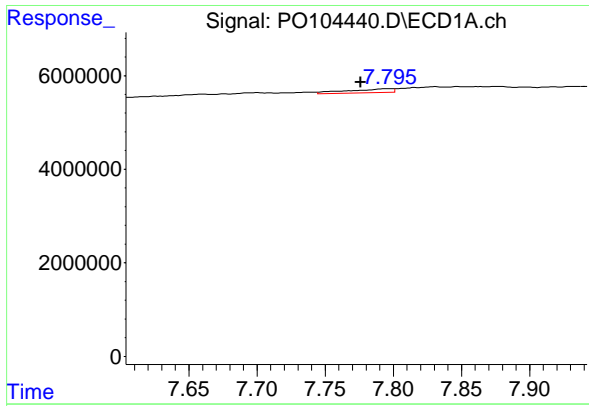
#32 AR-1260-2

R.T.: 7.408 min
 Delta R.T.: -0.010 min
 Response: 50121
 Conc: 0.13 ng/ml



#32 AR-1260-2

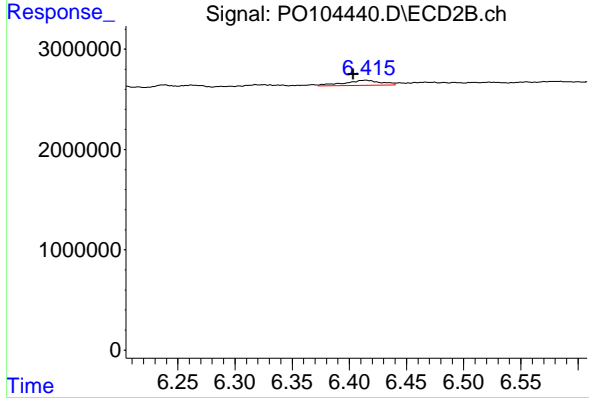
R.T.: 6.263 min
 Delta R.T.: 0.010 min
 Response: 318384
 Conc: 3.40 ng/ml



#33 AR-1260-3

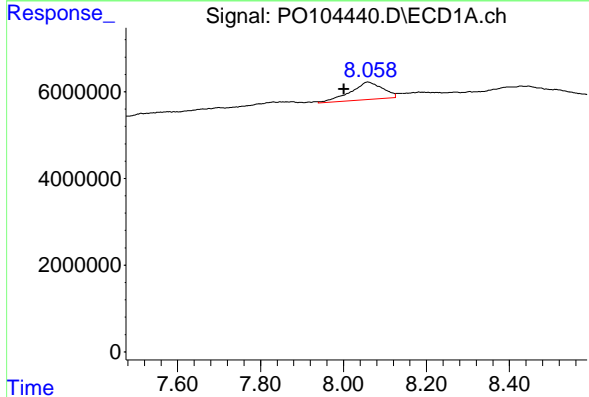
R.T.: 7.797 min
 Delta R.T.: 0.021 min
 Response: 1882077
 Conc: 6.50 ng/ml

Instrument :
 ECD_O
 ClientSampleId :
 PB161685BL



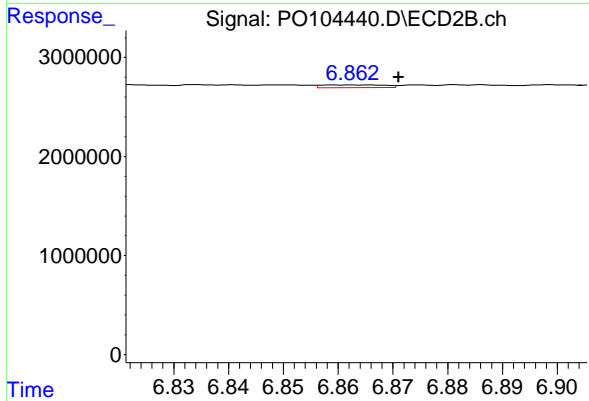
#33 AR-1260-3

R.T.: 6.415 min
 Delta R.T.: 0.011 min
 Response: 1140589
 Conc: 12.49 ng/ml



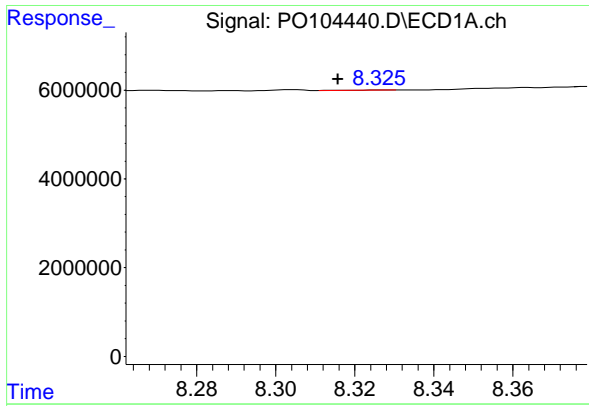
#34 AR-1260-4

R.T.: 8.059 min
 Delta R.T.: 0.057 min
 Response: 21800629
 Conc: 67.93 ng/ml



#34 AR-1260-4

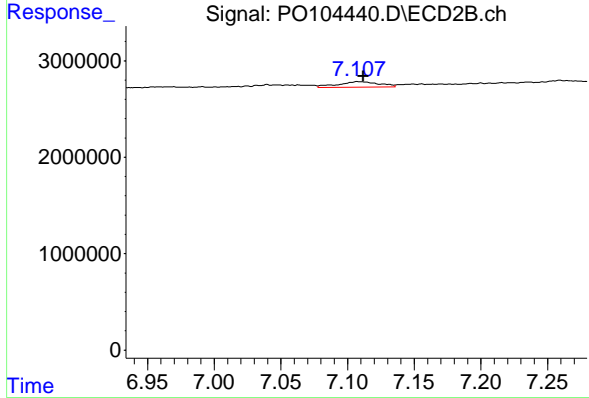
R.T.: 6.863 min
 Delta R.T.: -0.008 min
 Response: 215102
 Conc: 2.65 ng/ml



#35 AR-1260-5

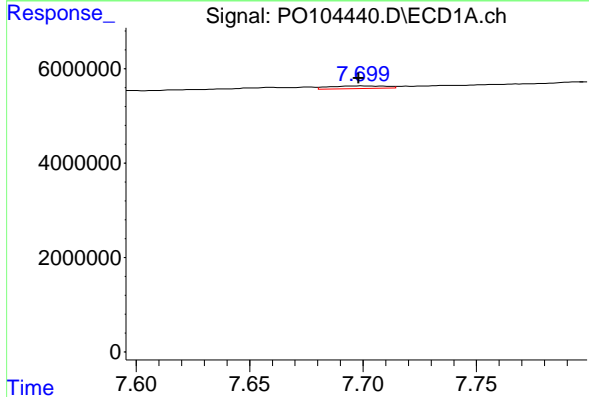
R.T.: 8.327 min
 Delta R.T.: 0.011 min
 Response: 40387
 Conc: 0.06 ng/ml

Instrument :
 ECD_O
 ClientSampleId :
 PB161685BL



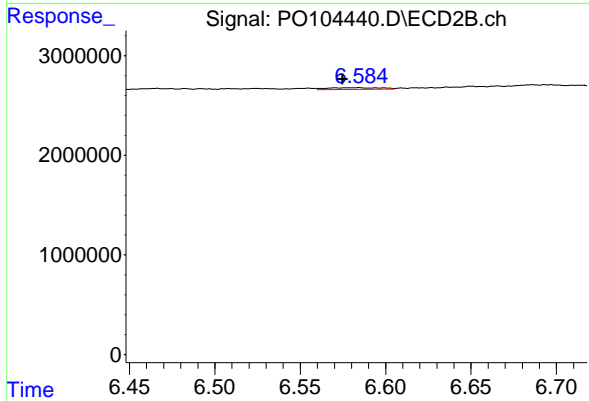
#35 AR-1260-5

R.T.: 7.108 min
 Delta R.T.: -0.004 min
 Response: 1196548
 Conc: 4.25 ng/ml



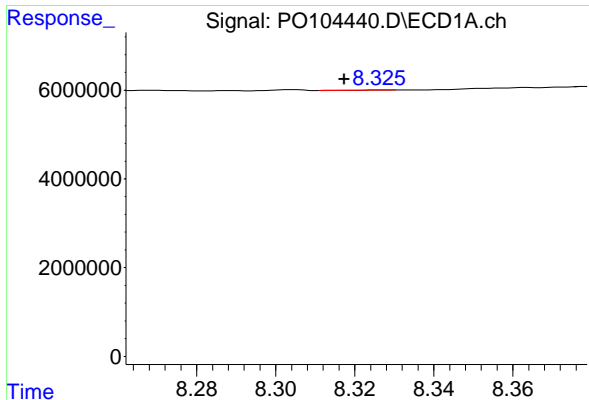
#36 AR-1262-1

R.T.: 7.700 min
 Delta R.T.: 0.002 min
 Response: 979094
 Conc: 3.43 ng/ml



#36 AR-1262-1

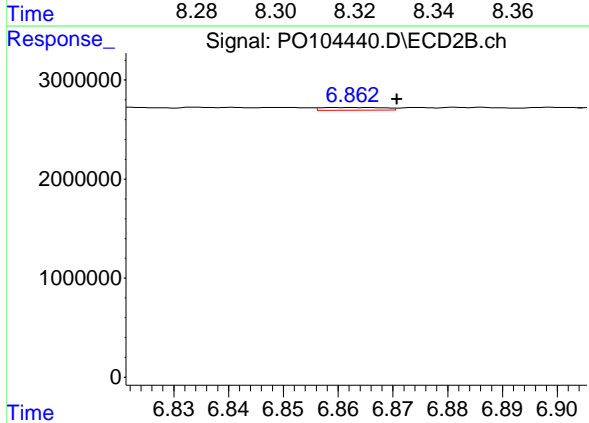
R.T.: 6.584 min
 Delta R.T.: 0.009 min
 Response: 393338
 Conc: 5.96 ng/ml



#37 AR-1262-2

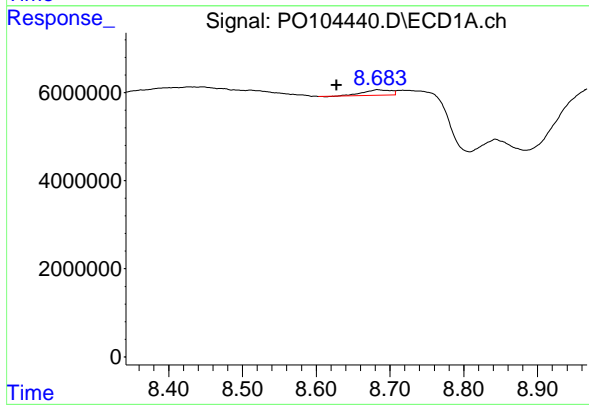
R.T.: 8.327 min
 Delta R.T.: 0.009 min
 Response: 40387
 Conc: 0.06 ng/ml

Instrument :
 ECD_O
 ClientSampleId :
 PB161685BL



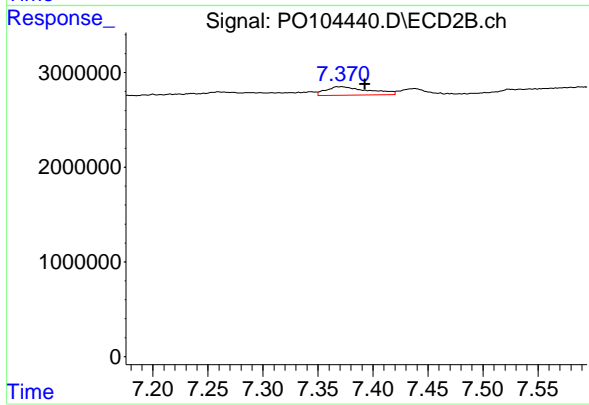
#37 AR-1262-2

R.T.: 6.863 min
 Delta R.T.: -0.008 min
 Response: 215102
 Conc: 1.95 ng/ml



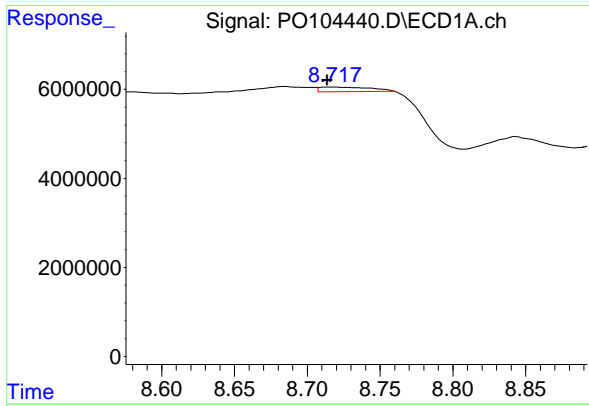
#38 AR-1262-3

R.T.: 8.684 min
 Delta R.T.: 0.056 min
 Response: 3218277
 Conc: 6.43 ng/ml



#38 AR-1262-3

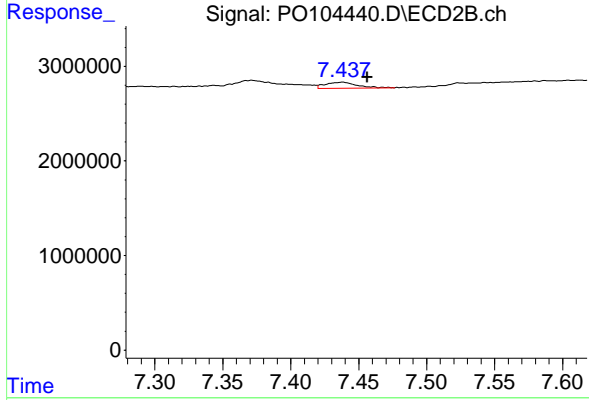
R.T.: 7.371 min
 Delta R.T.: -0.022 min
 Response: 2425300
 Conc: 15.55 ng/ml



#39 AR-1262-4

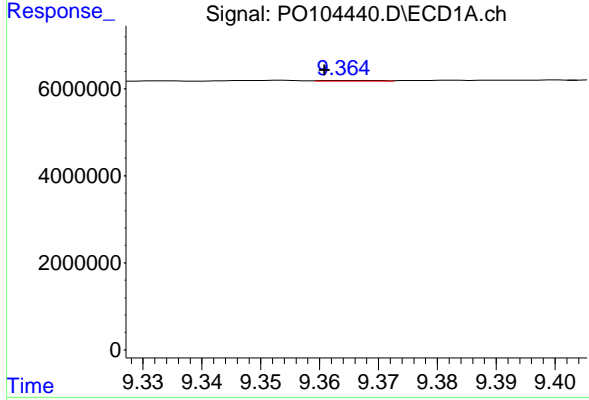
R.T.: 8.719 min
 Delta R.T.: 0.005 min
 Response: 2525216
 Conc: 6.64 ng/ml

Instrument :
 ECD_O
 ClientSampleId :
 PB161685BL



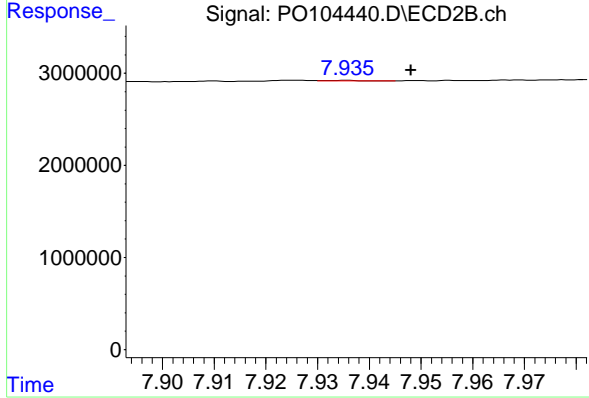
#39 AR-1262-4

R.T.: 7.438 min
 Delta R.T.: -0.018 min
 Response: 1017584
 Conc: 3.80 ng/ml



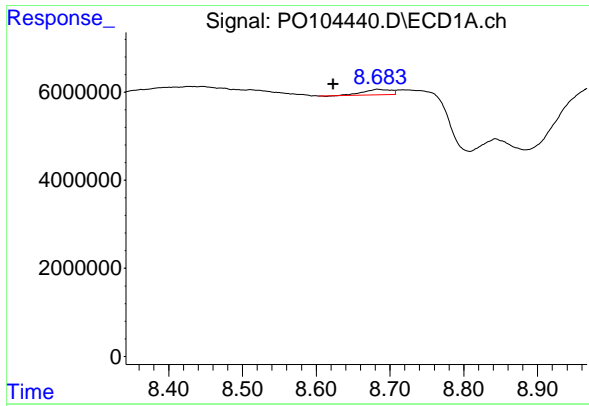
#40 AR-1262-5

R.T.: 9.365 min
 Delta R.T.: 0.004 min
 Response: 95207
 Conc: 0.36 ng/ml



#40 AR-1262-5

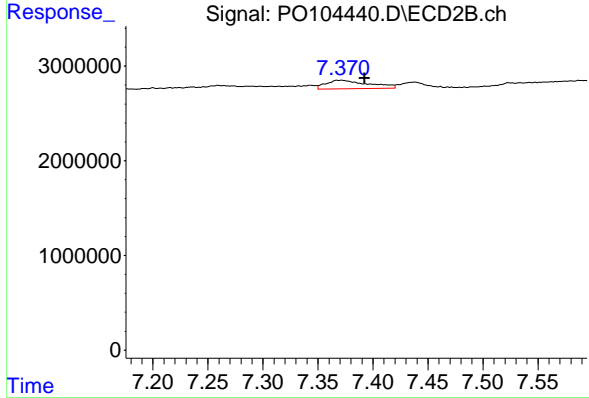
R.T.: 7.935 min
 Delta R.T.: -0.013 min
 Response: 34253
 Conc: 0.22 ng/ml



#41 AR-1268-1

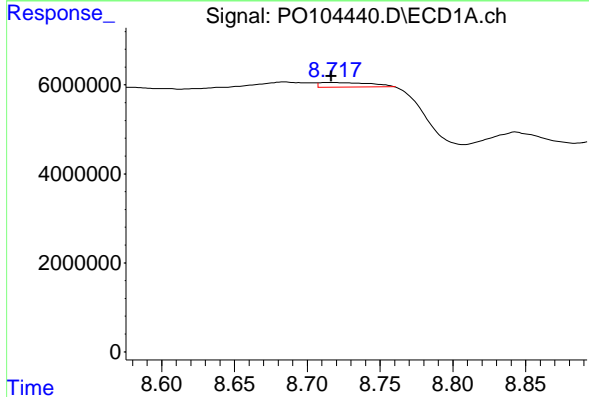
R.T.: 8.684 min
 Delta R.T.: 0.061 min
 Response: 3218277
 Conc: 3.95 ng/ml

Instrument :
 ECD_O
 ClientSampleId :
 PB161685BL



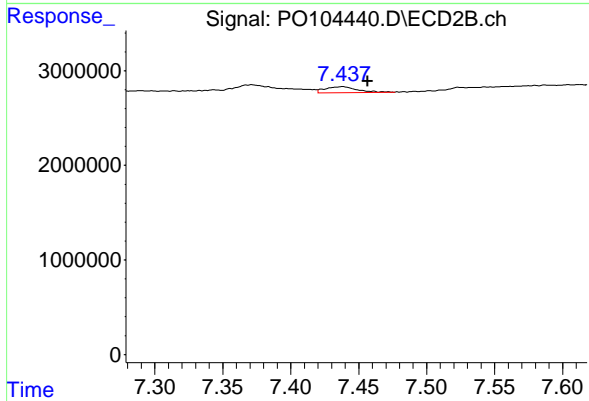
#41 AR-1268-1

R.T.: 7.371 min
 Delta R.T.: -0.021 min
 Response: 2425300
 Conc: 5.62 ng/ml



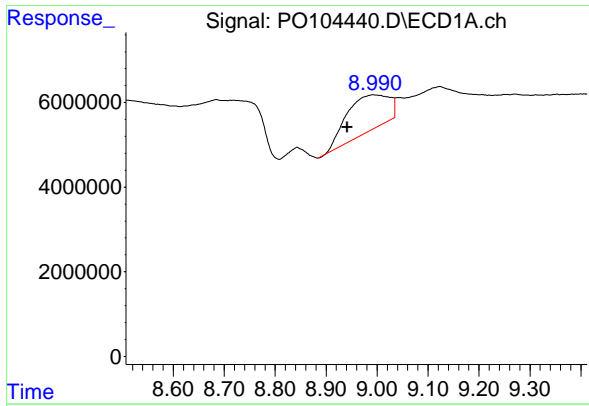
#42 AR-1268-2

R.T.: 8.719 min
 Delta R.T.: 0.002 min
 Response: 2525216
 Conc: 3.39 ng/ml



#42 AR-1268-2

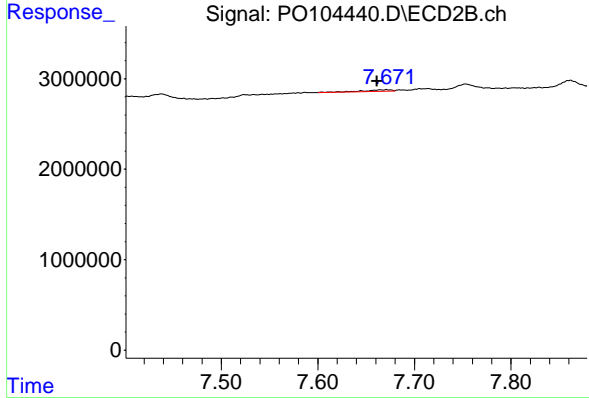
R.T.: 7.438 min
 Delta R.T.: -0.019 min
 Response: 1017584
 Conc: 2.35 ng/ml



#43 AR-1268-3

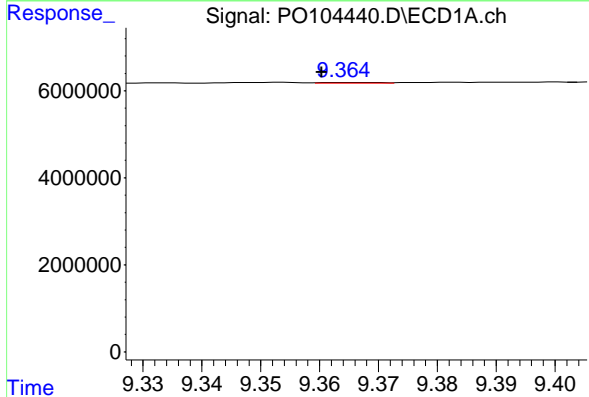
R.T.: 8.991 min
 Delta R.T.: 0.050 min
 Response: 49126393
 Conc: 79.26 ng/ml

Instrument :
 ECD_O
 ClientSampleId :
 PB161685BL



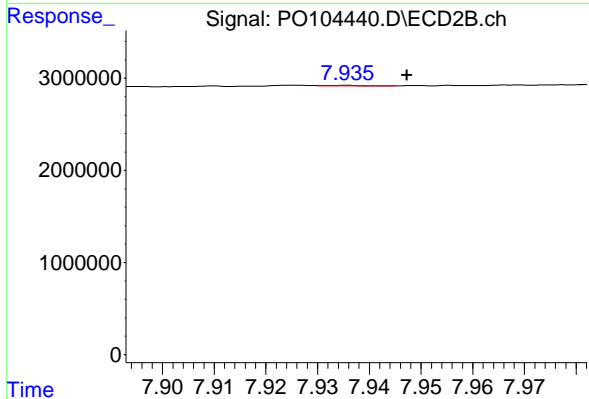
#43 AR-1268-3

R.T.: 7.672 min
 Delta R.T.: 0.010 min
 Response: 337837
 Conc: 0.87 ng/ml



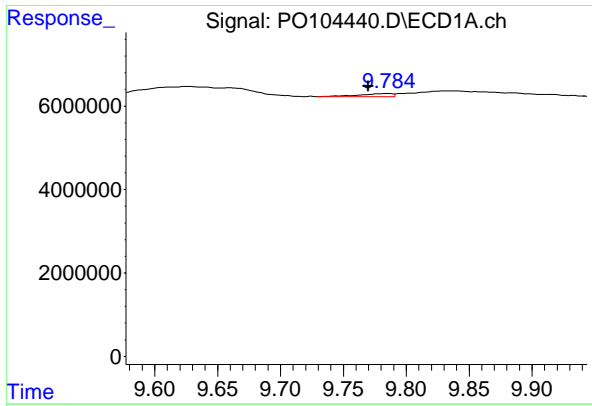
#44 AR-1268-4

R.T.: 9.365 min
 Delta R.T.: 0.004 min
 Response: 95207
 Conc: 0.34 ng/ml



#44 AR-1268-4

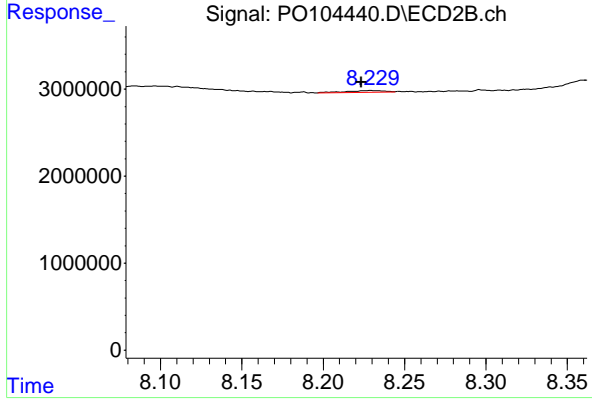
R.T.: 7.935 min
 Delta R.T.: -0.012 min
 Response: 34253
 Conc: 0.21 ng/ml



#45 AR-1268-5

R.T.: 9.785 min
 Delta R.T.: 0.015 min
 Response: 1367524
 Conc: 0.68 ng/ml

Instrument :
 ECD_O
 ClientSampleId :
 PB161685BL



#45 AR-1268-5

R.T.: 8.229 min
 Delta R.T.: 0.006 min
 Response: 323775
 Conc: 0.27 ng/ml