

Data Path : Z:\pestpcbsrv\HPCHEM1\ECD\_O\Data\P0062524\  
 Data File : P0104448.D  
 Signal(s) : Signal #1: ECD1A.ch Signal #2: ECD2B.ch  
 Acq On : 25 Jun 2024 19:44  
 Operator : YP/AJ  
 Sample : P3050-07  
 Misc :  
 ALS Vial : 27 Sample Multiplier: 1

Instrument :  
 ECD\_O  
 ClientSampleId :  
 624-07

Integration File signal 1: autoint1.e  
 Integration File signal 2: autoint2.e  
 Quant Time: Jun 26 01:32:11 2024  
 Quant Method : Z:\pestpcbsrv\HPCHEM1\ECD\_O\methods\P0062024.M  
 Quant Title : GC EXTRACTABLES  
 QLast Update : Fri Jun 21 04:29:14 2024  
 Response via : Initial Calibration  
 Integrator: ChemStation

Volume Inj. : 2 µl  
 Signal #1 Phase : ZB-MR1 Signal #2 Phase: ZB-MR2  
 Signal #1 Info : 30Mx0.32mmx 0.50µ Signal #2 Info : 30M x 0.32mm x 0.25µm

Compound	RT#1	RT#2	Resp#1	Resp#2	ng/ml	ng/ml
-----						
System Monitoring Compounds						
1) SA Tetrachlo...	4.407	3.550	154.1E6	29369796	19.397	19.568
2) SA Decachlor...	10.116	8.469	102.6E6	58680951	19.104	18.284
Target Compounds						
3) L1 AR-1016-1	5.569	4.611	22297657	7906871	82.552	182.969 #
4) L1 AR-1016-2	5.569	4.611	22297657	7906871	59.297	108.906 #
5) L1 AR-1016-3	5.636	4.828	43235170	-3775585	178.379	N.D. #
7) L1 AR-1016-5	6.033	5.040	19350874	-316346	100.642	N.D. #
8) L2 AR-1221-1	4.613	3.746	8100654	365034	77.255	20.284 #
9) L2 AR-1221-2	4.680	3.818	15952734	855233	198.340	53.608 #
10) L2 AR-1221-3	4.775	3.907	6585926	10990791	29.049	231.502 #
11) L3 AR-1232-1	4.775	3.907	6585926	10990791	33.618	275.457 #
12) L3 AR-1232-2	5.311	4.611	34458131	7906871	298.972	213.949 #
14) L3 AR-1232-4	5.756	4.890	14040407	2065236	147.471	147.860
15) L3 AR-1232-5	5.837	5.040	15101741	-316346	205.972	N.D. #
16) L4 AR-1242-1	5.569	4.611	22297657	7906871	96.912	215.586 #
17) L4 AR-1242-2	5.605	4.611	63917305	7906871	197.664	128.279 #
18) L4 AR-1242-3	5.636	4.828	43235170	-3775585	205.389	N.D. #
19) L4 AR-1242-4	5.756	4.890	14040407	2065236	82.885	76.047
20) L4 AR-1242-5	6.503	5.388	65094903	10881780	373.181	294.512
21) L5 AR-1248-1	5.569	4.611	22297657	7906871	127.086	279.899 #
23) L5 AR-1248-3	6.033	4.890	19350874	2065236	74.761	53.254 #
24) L5 AR-1248-4	6.449	5.040	39899382	-316346	136.877	N.D. #
25) L5 AR-1248-5	6.503	5.444	65094903	7232699	229.300	124.793 #
26) L6 AR-1254-1	6.449	5.388	39899382	10881780	134.028	155.777
27) L6 AR-1254-2	6.639	5.556	51421354	9321037	116.152	149.252 #
28) L6 AR-1254-3	7.004	5.942	73835729	22306071	163.788	185.969
29) L6 AR-1254-4	7.288	6.166	128.5E6	25041824	385.569	312.082
30) L6 AR-1254-5	7.706	6.579	155.6E6	43262458	449.771	371.125
31) L7 AR-1260-1	7.168	6.069	61508567	14593590	180.573	208.096
32) L7 AR-1260-2	7.423	6.255	100.5E6	20495901	257.480	218.629
33) L7 AR-1260-3	7.767	6.405	19649252	13660489	67.899	149.547 #
34) L7 AR-1260-4	7.994	6.874	48694288	2599814	151.734	32.051 #
35) L7 AR-1260-5	8.323	7.114	11959744	3968177	19.019	14.095 #
36) L8 AR-1262-1	7.706	6.579	155.6E6	43262458	545.434	655.901
37) L8 AR-1262-2	8.323	6.874	11959744	2599814	16.347	23.584 #
38) L8 AR-1262-3	8.647	7.394	8548002	1489500	17.078	9.553 #
39) L8 AR-1262-4	8.719	7.458	8496393	3115993	22.356	11.632 #
40) L8 AR-1262-5	9.353	7.954	608880	693288	2.288	4.545 #
41) L9 AR-1268-1	8.647	7.394	8548002	1489500	10.483	3.450 #
42) L9 AR-1268-2	8.719	7.458	8496393	3115993	11.401	7.202 #
43) L9 AR-1268-3	8.953	7.672	298882	111572	0.482	0.287 #
44) L9 AR-1268-4	9.353	7.954	608880	693288	2.189	4.323 #

Data Path : Z:\pestpcbsrv\HPCHEM1\ECD\_O\Data\P0062524\  
 Data File : P0104448.D  
 Signal(s) : Signal #1: ECD1A.ch Signal #2: ECD2B.ch  
 Acq On : 25 Jun 2024 19:44  
 Operator : YP/AJ  
 Sample : P3050-07  
 Misc :  
 ALS Vial : 27 Sample Multiplier: 1

Instrument :  
 ECD\_O  
 ClientSampleId :  
 624-07

Integration File signal 1: autoint1.e  
 Integration File signal 2: autoint2.e  
 Quant Time: Jun 26 01:32:11 2024  
 Quant Method : Z:\pestpcbsrv\HPCHEM1\ECD\_O\methods\P0062024.M  
 Quant Title : GC EXTRACTABLES  
 QLast Update : Fri Jun 21 04:29:14 2024  
 Response via : Initial Calibration  
 Integrator: ChemStation

Volume Inj. : 2 µl  
 Signal #1 Phase : ZB-MR1 Signal #2 Phase: ZB-MR2  
 Signal #1 Info : 30Mx0.32mmx 0.50µ Signal #2 Info : 30M x 0.32mm x 0.25µm

Compound	RT#1	RT#2	Resp#1	Resp#2	ng/ml	ng/ml
45) L9 AR-1268-5	9.781	8.234	418430	559372	0.207	0.459 #

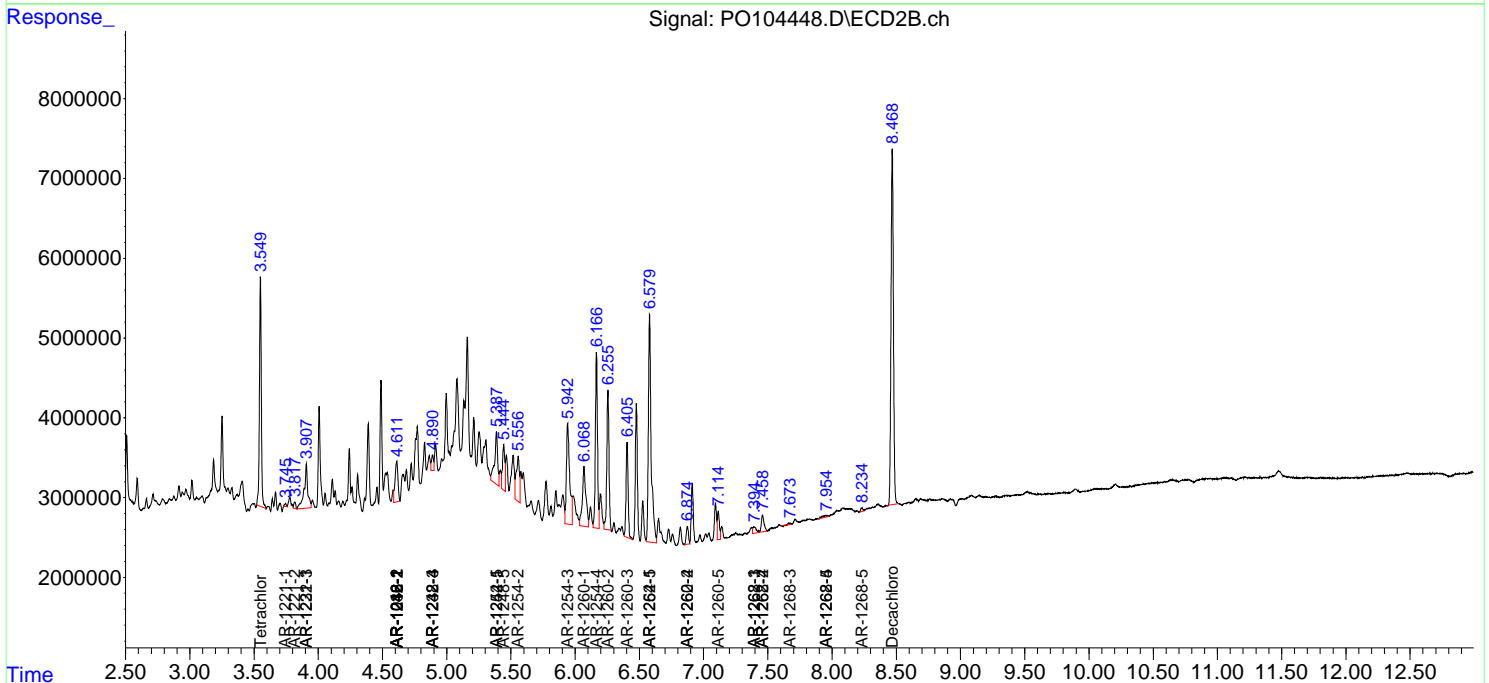
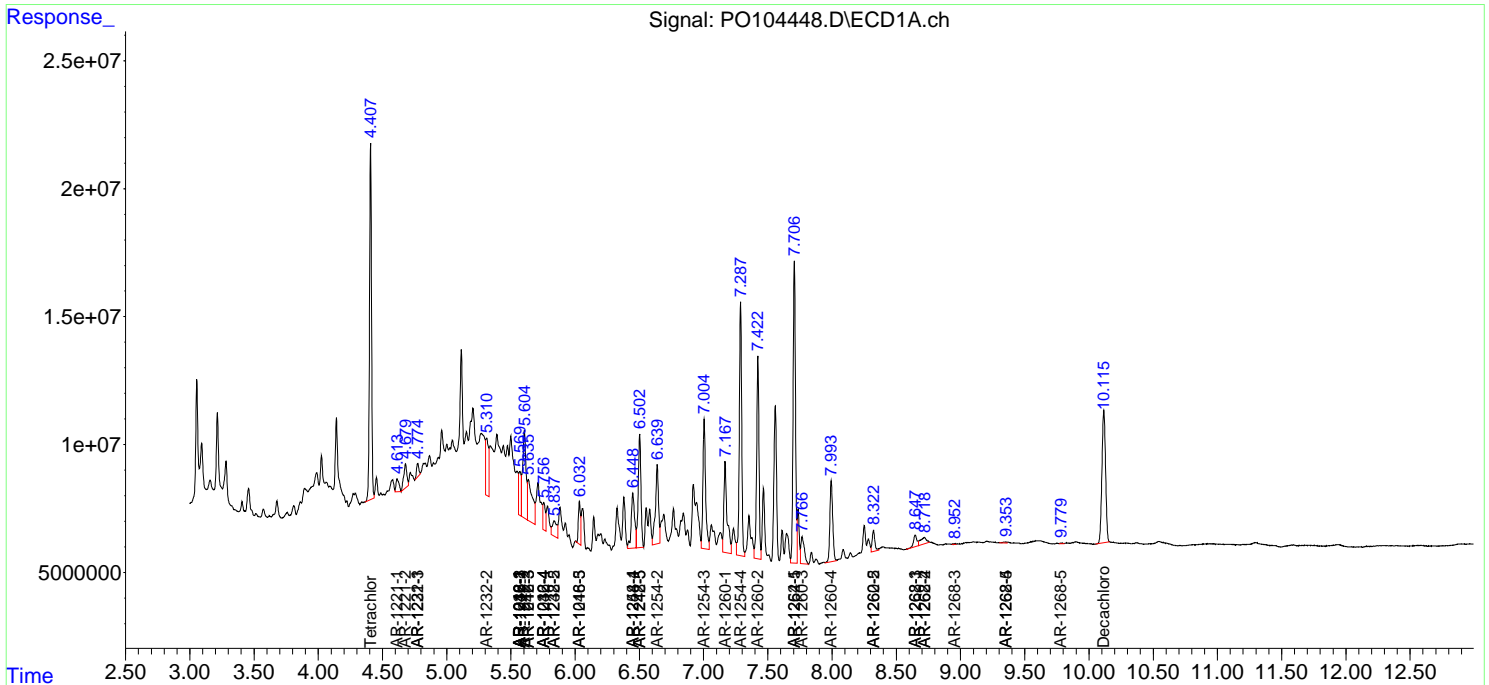
(f)=RT Delta > 1/2 Window (#)=Amounts differ by > 25% (m)=manual int.

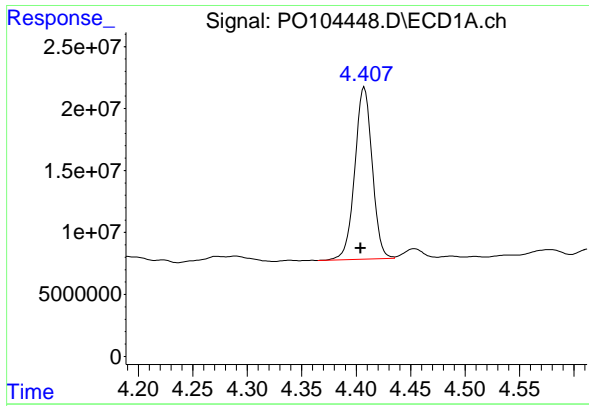
Data Path : Z:\pestpcbsrv\HPCHEM1\ECD\_O\Data\PO062524\  
 Data File : PO104448.D  
 Signal(s) : Signal #1: ECD1A.ch Signal #2: ECD2B.ch  
 Acq On : 25 Jun 2024 19:44  
 Operator : YP/AJ  
 Sample : P3050-07  
 Misc :  
 ALS Vial : 27 Sample Multiplier: 1

Instrument :  
 ECD\_O  
 ClientSampleId :  
 624-07

Integration File signal 1: autoint1.e  
 Integration File signal 2: autoint2.e  
 Quant Time: Jun 26 01:32:11 2024  
 Quant Method : Z:\pestpcbsrv\HPCHEM1\ECD\_O\methods\PO062024.M  
 Quant Title : GC EXTRACTABLES  
 QLast Update : Fri Jun 21 04:29:14 2024  
 Response via : Initial Calibration  
 Integrator: ChemStation

Volume Inj. : 2 µl  
 Signal #1 Phase : ZB-MR1 Signal #2 Phase: ZB-MR2  
 Signal #1 Info : 30Mx0.32mmx 0.50µm Signal #2 Info : 30M x 0.32mm x 0.25µm

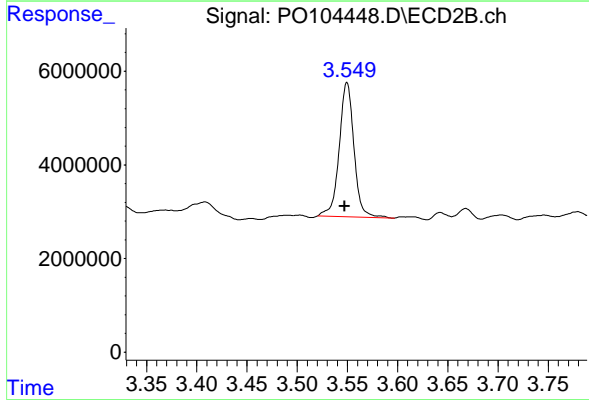




#1 Tetrachloro-m-xylene

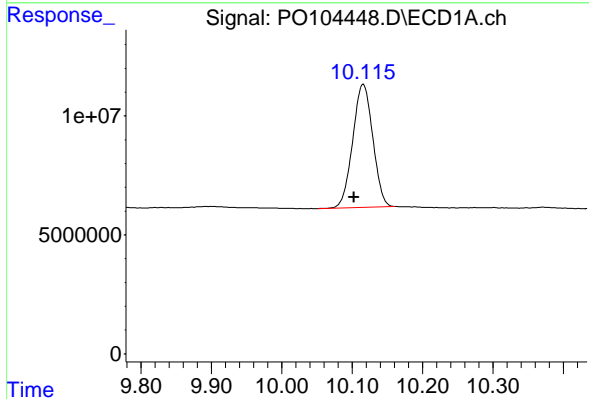
R.T.: 4.407 min  
 Delta R.T.: 0.003 min  
 Response: 154084809  
 Conc: 19.40 ng/ml

Instrument :  
 ECD\_O  
 ClientSampleId :  
 624-07



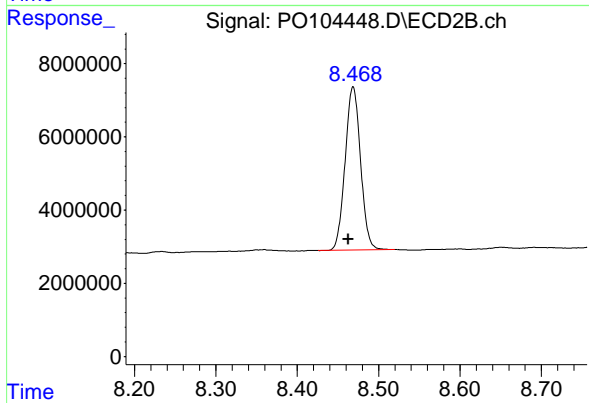
#1 Tetrachloro-m-xylene

R.T.: 3.550 min  
 Delta R.T.: 0.002 min  
 Response: 29369796  
 Conc: 19.57 ng/ml



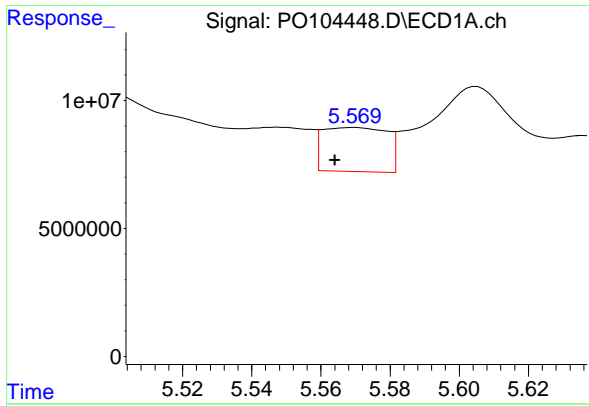
#2 Decachlorobiphenyl

R.T.: 10.116 min  
 Delta R.T.: 0.013 min  
 Response: 102643675  
 Conc: 19.10 ng/ml



#2 Decachlorobiphenyl

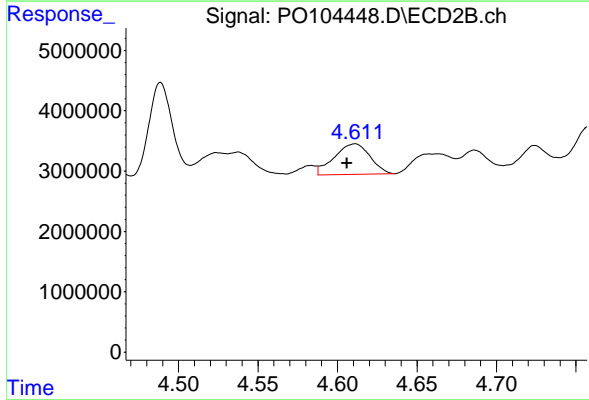
R.T.: 8.469 min  
 Delta R.T.: 0.006 min  
 Response: 58680951  
 Conc: 18.28 ng/ml



#3 AR-1016-1

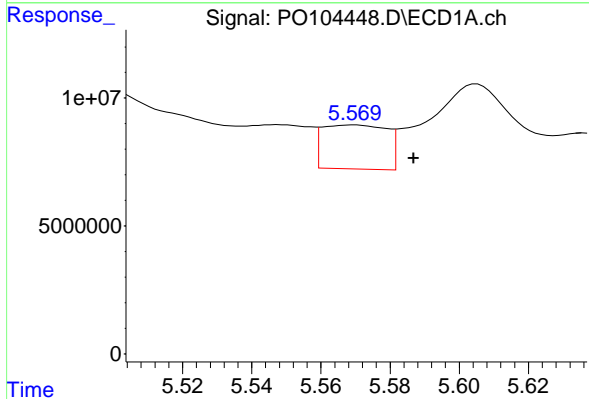
R.T.: 5.569 min  
 Delta R.T.: 0.005 min  
 Response: 22297657  
 Conc: 82.55 ng/ml

Instrument :  
 ECD\_O  
 ClientSampleId :  
 624-07



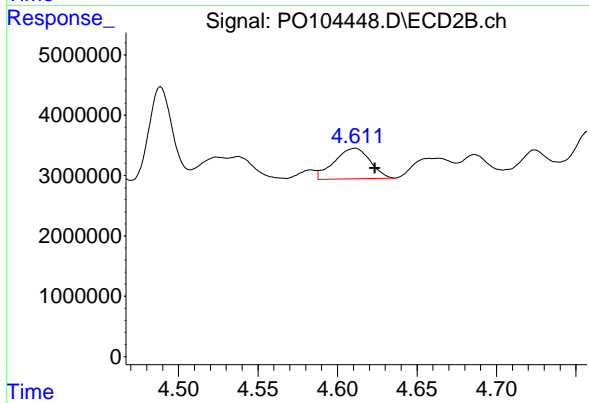
#3 AR-1016-1

R.T.: 4.611 min  
 Delta R.T.: 0.005 min  
 Response: 7906871  
 Conc: 182.97 ng/ml



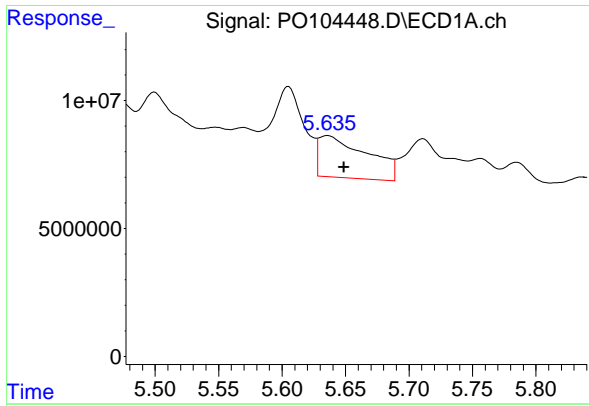
#4 AR-1016-2

R.T.: 5.569 min  
 Delta R.T.: -0.017 min  
 Response: 22297657  
 Conc: 59.30 ng/ml



#4 AR-1016-2

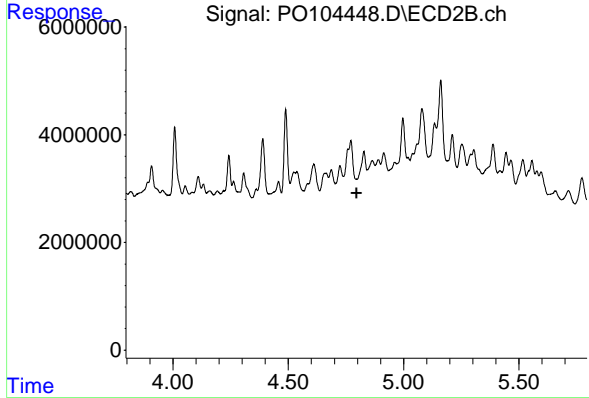
R.T.: 4.611 min  
 Delta R.T.: -0.013 min  
 Response: 7906871  
 Conc: 108.91 ng/ml



#5 AR-1016-3

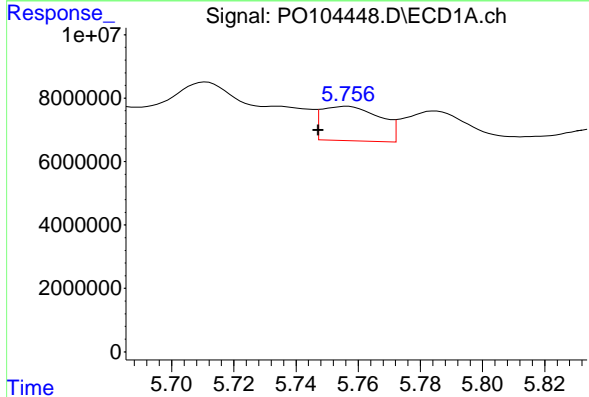
R.T.: 5.636 min  
 Delta R.T.: -0.013 min  
 Response: 43235170  
 Conc: 178.38 ng/ml

Instrument :  
 ECD\_O  
 ClientSampleId :  
 624-07



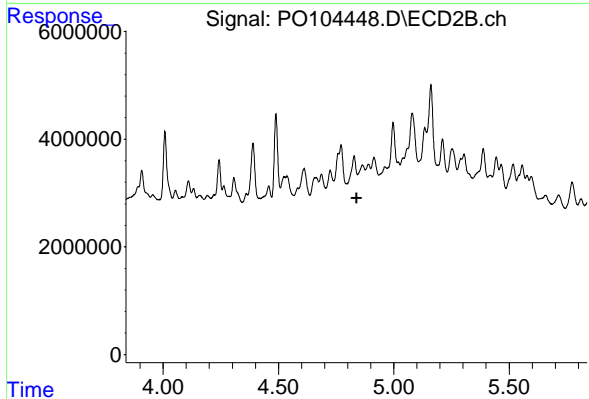
#5 AR-1016-3

R.T.: 4.828 min  
 Delta R.T.: 0.032 min  
 Response: -3775585  
 Conc: N.D.



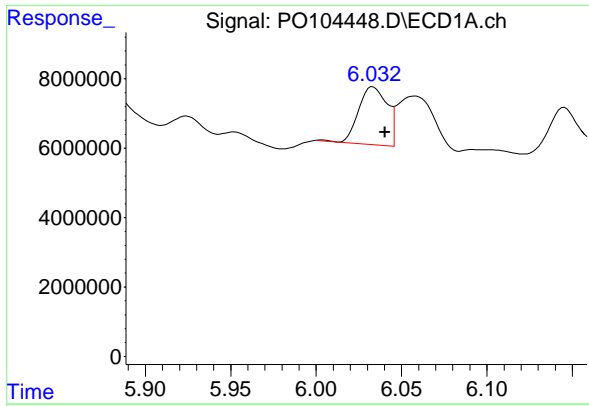
#6 AR-1016-4

R.T.: 5.756 min  
 Delta R.T.: 0.009 min  
 Response: 14040407  
 Conc: 72.27 ng/ml



#6 AR-1016-4

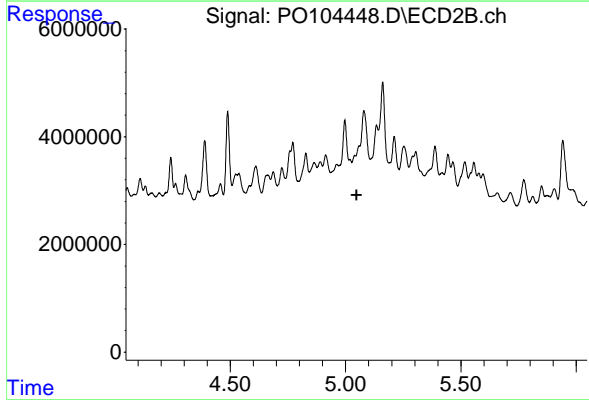
R.T.: 4.828 min  
 Delta R.T.: -0.010 min  
 Response: -3775585  
 Conc: N.D.



#7 AR-1016-5

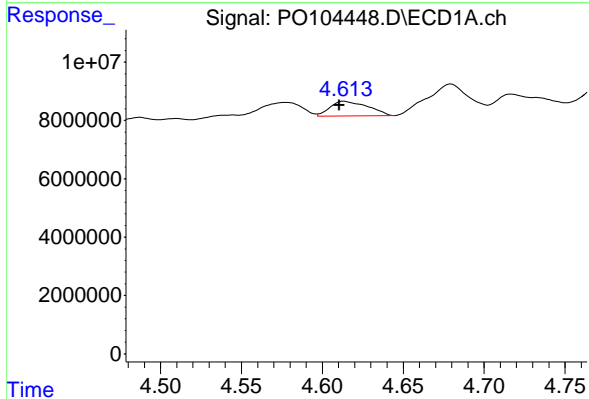
R.T.: 6.033 min  
 Delta R.T.: -0.007 min  
 Response: 19350874  
 Conc: 100.64 ng/ml

Instrument :  
 ECD\_O  
 ClientSampleId :  
 624-07



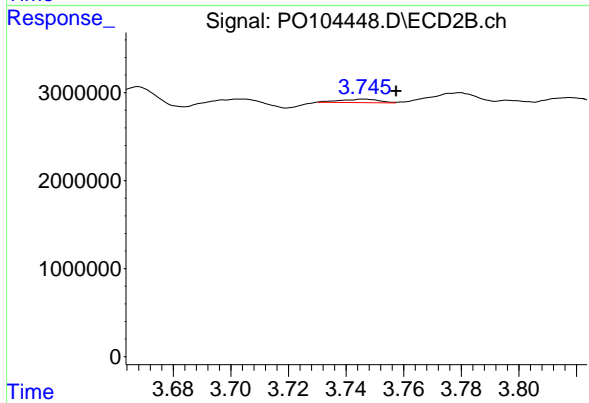
#7 AR-1016-5

R.T.: 5.040 min  
 Delta R.T.: -0.007 min  
 Response: -316346  
 Conc: N.D.



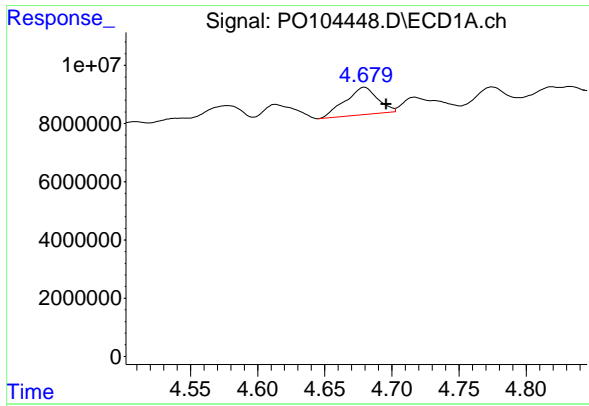
#8 AR-1221-1

R.T.: 4.613 min  
 Delta R.T.: 0.003 min  
 Response: 8100654  
 Conc: 77.26 ng/ml



#8 AR-1221-1

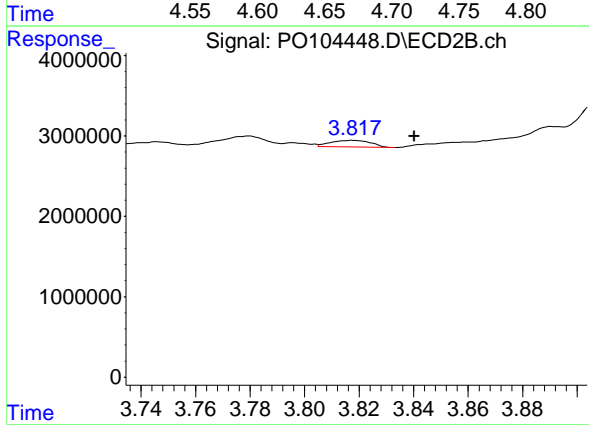
R.T.: 3.746 min  
 Delta R.T.: -0.011 min  
 Response: 365034  
 Conc: 20.28 ng/ml



#9 AR-1221-2

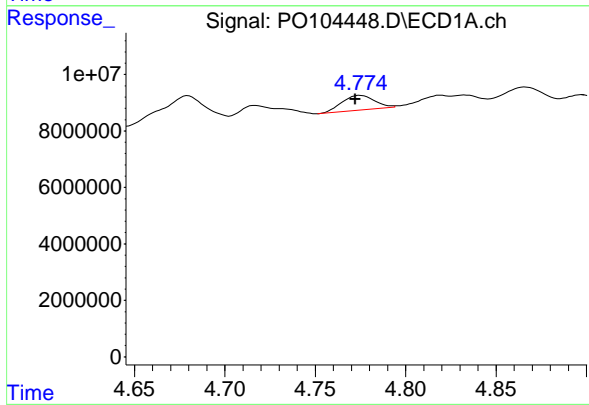
R.T.: 4.680 min  
 Delta R.T.: -0.016 min  
 Response: 15952734  
 Conc: 198.34 ng/ml

Instrument :  
 ECD\_O  
 ClientSampleId :  
 624-07



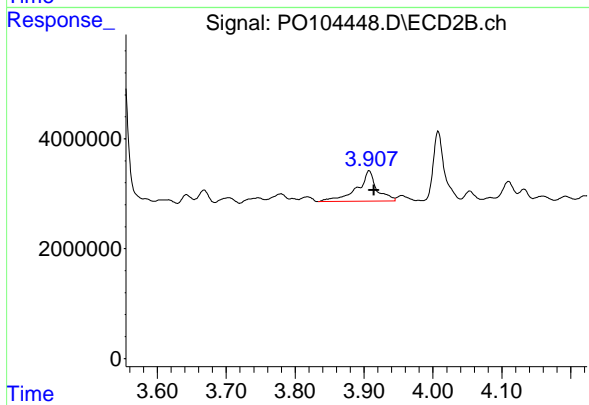
#9 AR-1221-2

R.T.: 3.818 min  
 Delta R.T.: -0.023 min  
 Response: 855233  
 Conc: 53.61 ng/ml



#10 AR-1221-3

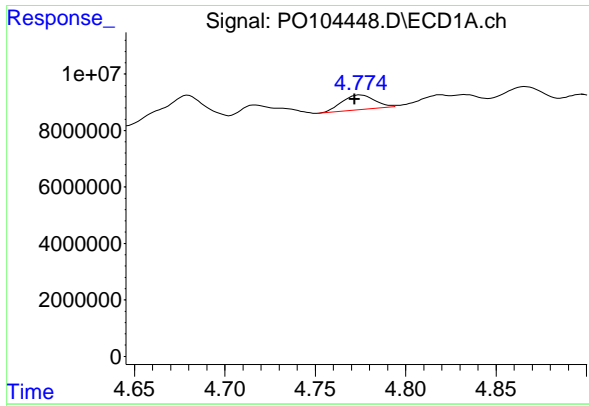
R.T.: 4.775 min  
 Delta R.T.: 0.003 min  
 Response: 6585926  
 Conc: 29.05 ng/ml



#10 AR-1221-3

R.T.: 3.907 min  
 Delta R.T.: -0.007 min  
 Response: 10990791  
 Conc: 231.50 ng/ml

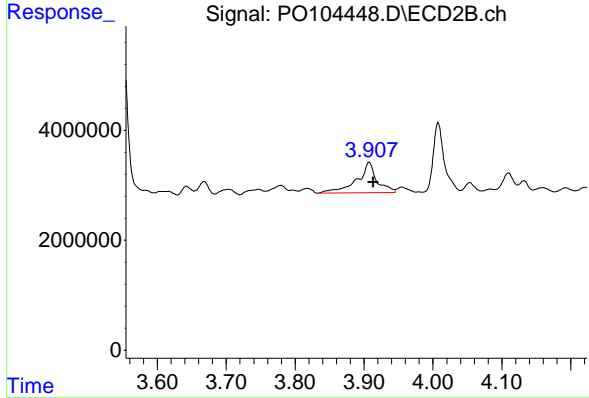




#11 AR-1232-1

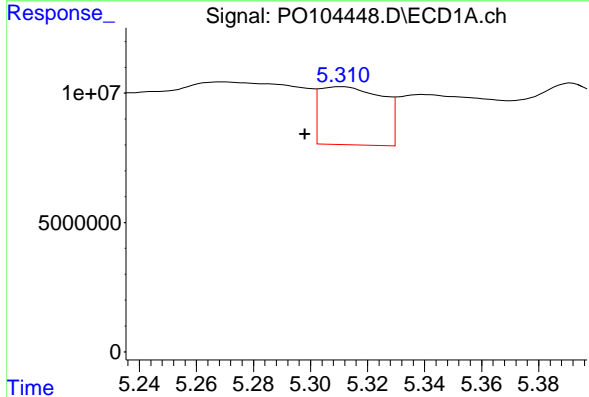
R.T.: 4.775 min  
 Delta R.T.: 0.003 min  
 Response: 6585926  
 Conc: 33.62 ng/ml

Instrument :  
 ECD\_O  
 ClientSampleId :  
 624-07



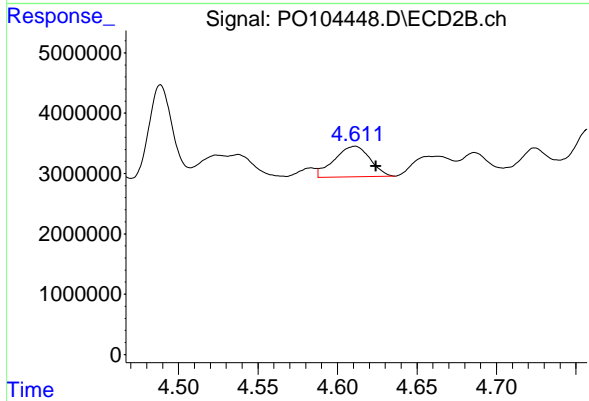
#11 AR-1232-1

R.T.: 3.907 min  
 Delta R.T.: -0.006 min  
 Response: 10990791  
 Conc: 275.46 ng/ml



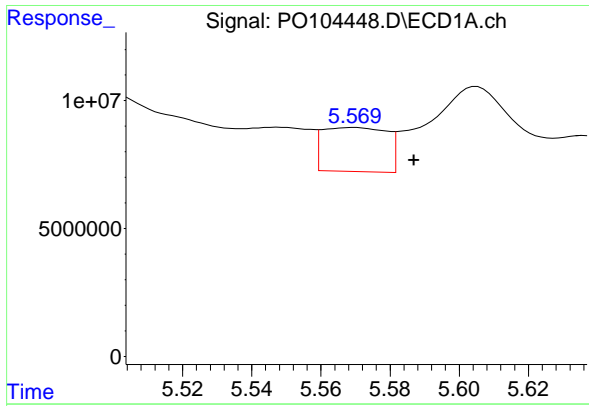
#12 AR-1232-2

R.T.: 5.311 min  
 Delta R.T.: 0.013 min  
 Response: 34458131  
 Conc: 298.97 ng/ml



#12 AR-1232-2

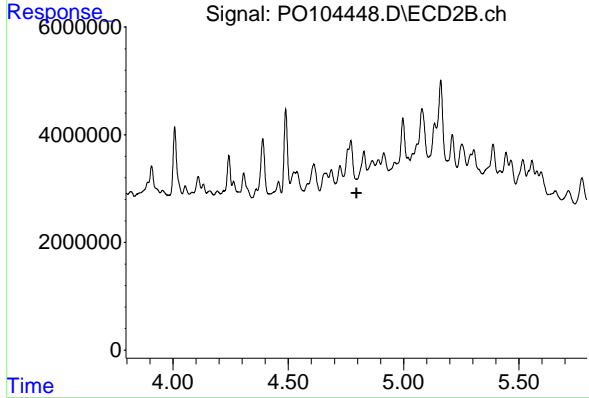
R.T.: 4.611 min  
 Delta R.T.: -0.013 min  
 Response: 7906871  
 Conc: 213.95 ng/ml



#13 AR-1232-3

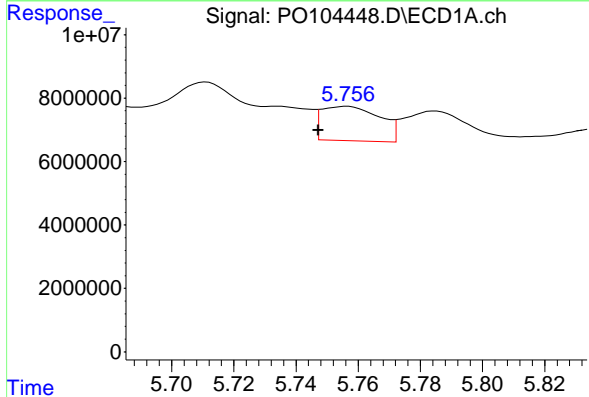
R.T.: 5.569 min  
 Delta R.T.: -0.018 min  
 Response: 22297657  
 Conc: 117.46 ng/ml

Instrument :  
 ECD\_O  
 ClientSampleId :  
 624-07



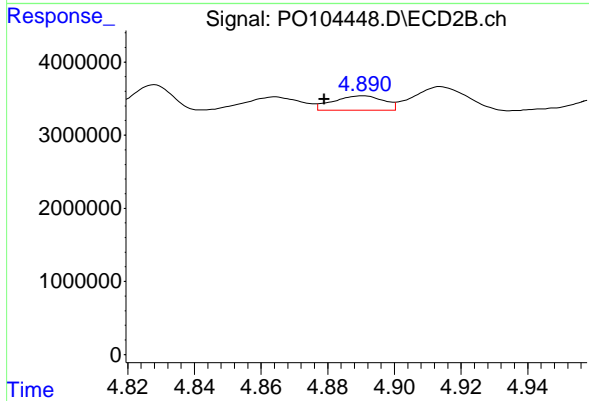
#13 AR-1232-3

R.T.: 4.828 min  
 Delta R.T.: 0.032 min  
 Response: -3775585  
 Conc: N.D.



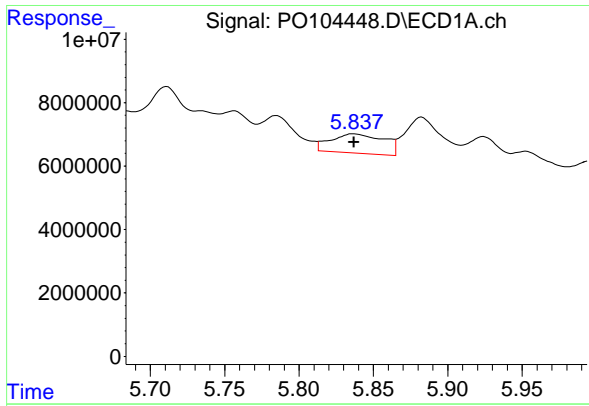
#14 AR-1232-4

R.T.: 5.756 min  
 Delta R.T.: 0.009 min  
 Response: 14040407  
 Conc: 147.47 ng/ml



#14 AR-1232-4

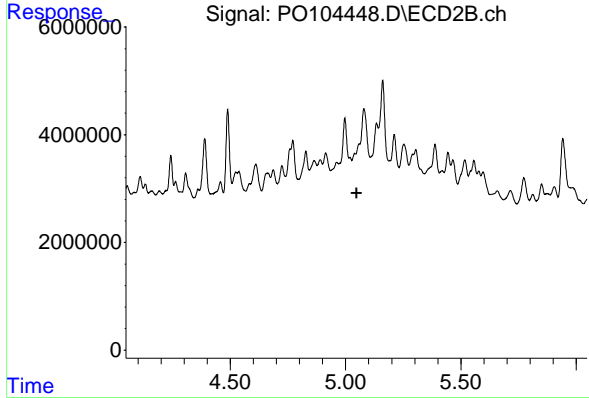
R.T.: 4.890 min  
 Delta R.T.: 0.012 min  
 Response: 2065236  
 Conc: 147.86 ng/ml



#15 AR-1232-5

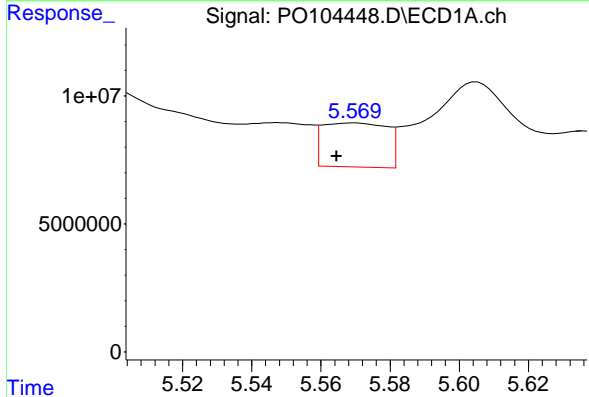
R.T.: 5.837 min  
 Delta R.T.: 0.000 min  
 Response: 15101741  
 Conc: 205.97 ng/ml

Instrument :  
 ECD\_O  
 ClientSampleId :  
 624-07



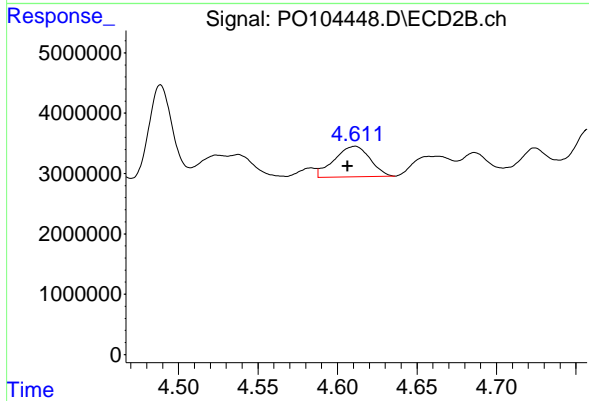
#15 AR-1232-5

R.T.: 5.040 min  
 Delta R.T.: -0.007 min  
 Response: -316346  
 Conc: N.D.



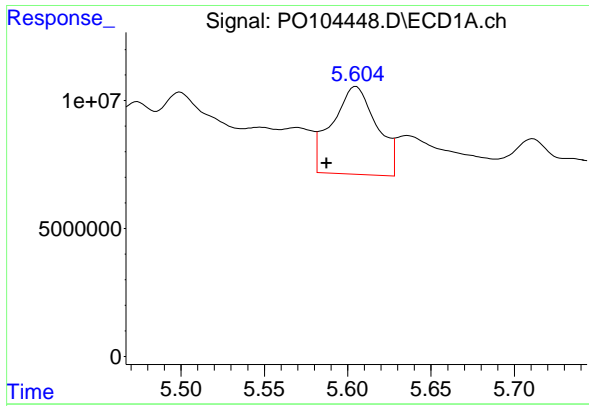
#16 AR-1242-1

R.T.: 5.569 min  
 Delta R.T.: 0.005 min  
 Response: 22297657  
 Conc: 96.91 ng/ml



#16 AR-1242-1

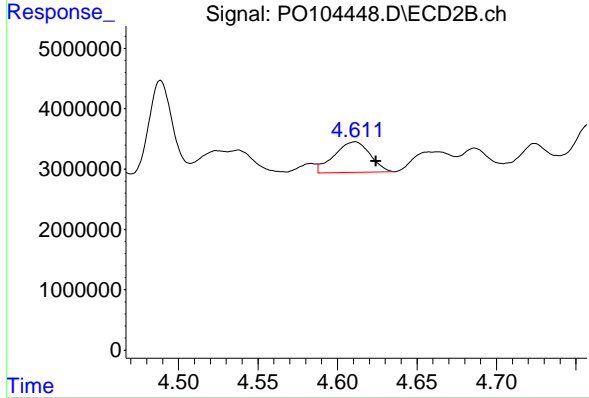
R.T.: 4.611 min  
 Delta R.T.: 0.005 min  
 Response: 7906871  
 Conc: 215.59 ng/ml



#17 AR-1242-2

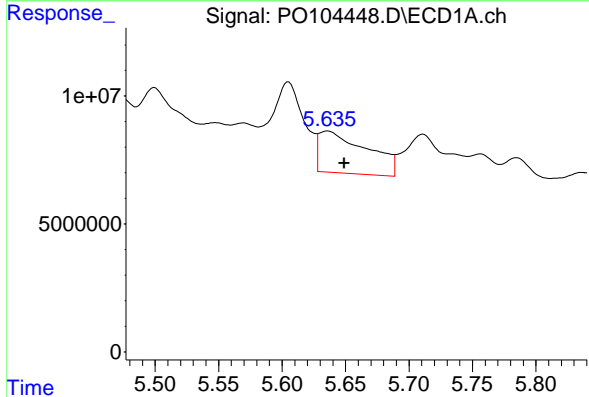
R.T.: 5.605 min  
 Delta R.T.: 0.018 min  
 Response: 63917305  
 Conc: 197.66 ng/ml

Instrument :  
 ECD\_O  
 ClientSampleId :  
 624-07



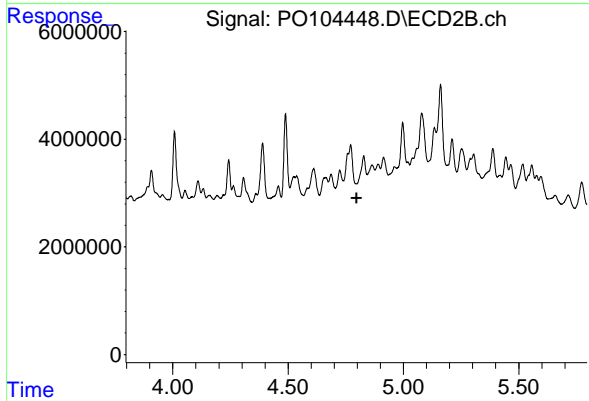
#17 AR-1242-2

R.T.: 4.611 min  
 Delta R.T.: -0.013 min  
 Response: 7906871  
 Conc: 128.28 ng/ml



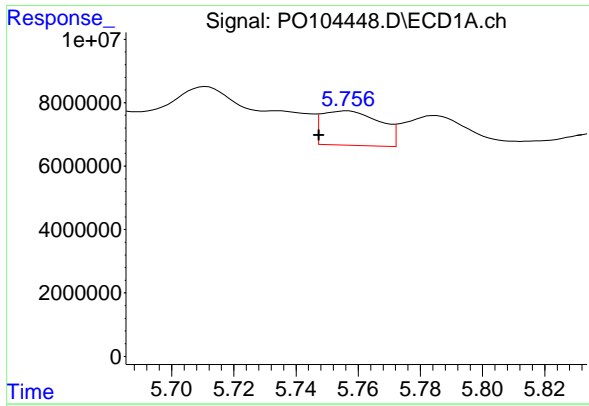
#18 AR-1242-3

R.T.: 5.636 min  
 Delta R.T.: -0.013 min  
 Response: 43235170  
 Conc: 205.39 ng/ml



#18 AR-1242-3

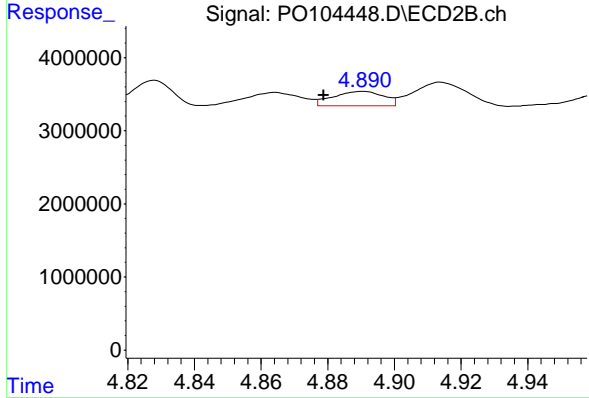
R.T.: 4.828 min  
 Delta R.T.: 0.032 min  
 Response: -3775585  
 Conc: N.D.



#19 AR-1242-4

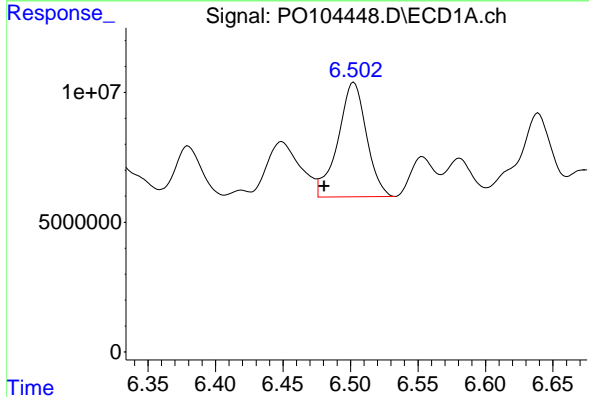
R.T.: 5.756 min  
 Delta R.T.: 0.009 min  
 Response: 14040407  
 Conc: 82.88 ng/ml

Instrument :  
 ECD\_O  
 ClientSampleId :  
 624-07



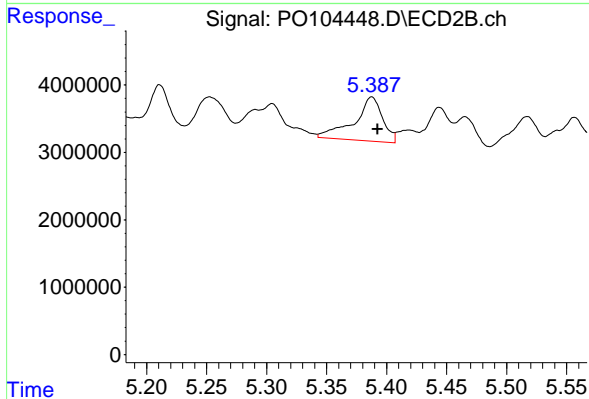
#19 AR-1242-4

R.T.: 4.890 min  
 Delta R.T.: 0.012 min  
 Response: 2065236  
 Conc: 76.05 ng/ml



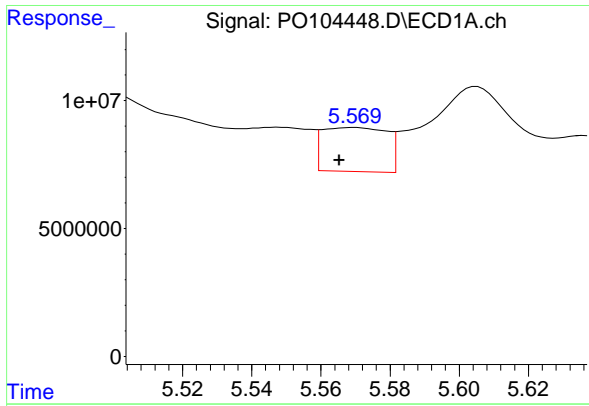
#20 AR-1242-5

R.T.: 6.503 min  
 Delta R.T.: 0.022 min  
 Response: 65094903  
 Conc: 373.18 ng/ml



#20 AR-1242-5

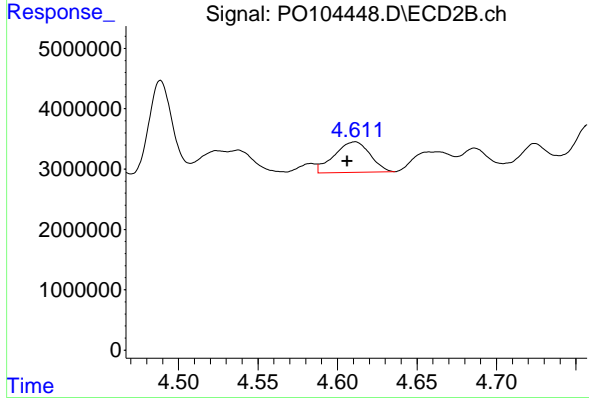
R.T.: 5.388 min  
 Delta R.T.: -0.005 min  
 Response: 10881780  
 Conc: 294.51 ng/ml



#21 AR-1248-1

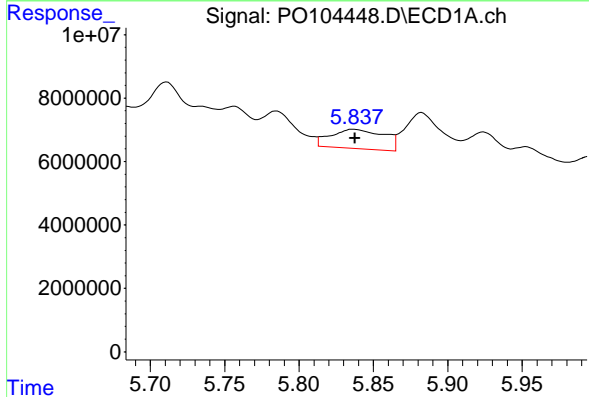
R.T.: 5.569 min  
 Delta R.T.: 0.004 min  
 Response: 22297657  
 Conc: 127.09 ng/ml

Instrument :  
 ECD\_O  
 ClientSampleId :  
 624-07



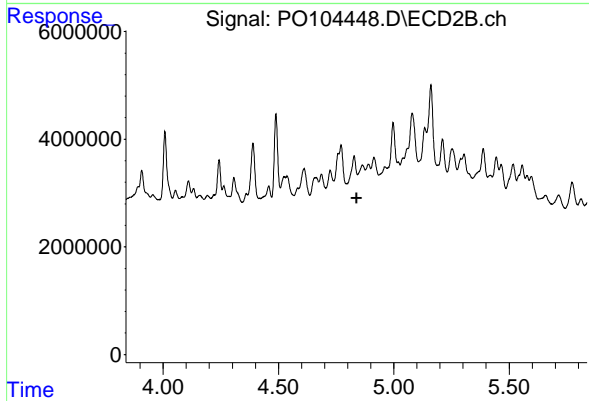
#21 AR-1248-1

R.T.: 4.611 min  
 Delta R.T.: 0.005 min  
 Response: 7906871  
 Conc: 279.90 ng/ml



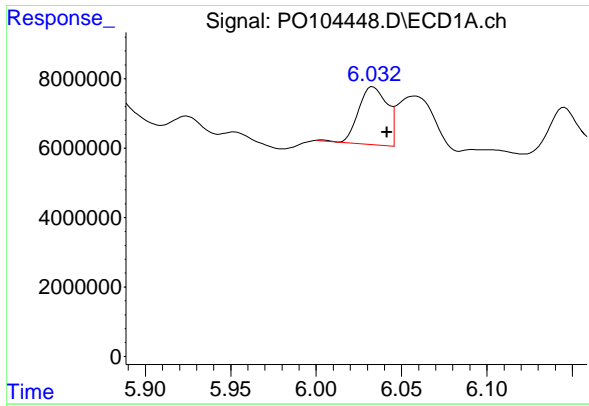
#22 AR-1248-2

R.T.: 5.837 min  
 Delta R.T.: 0.000 min  
 Response: 15101741  
 Conc: 62.16 ng/ml



#22 AR-1248-2

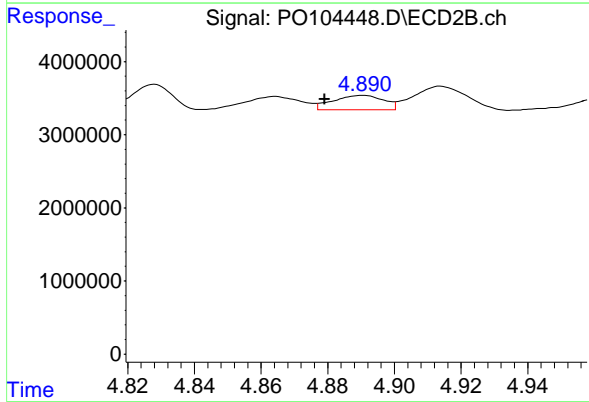
R.T.: 4.828 min  
 Delta R.T.: -0.010 min  
 Response: -3775585  
 Conc: N.D.



#23 AR-1248-3

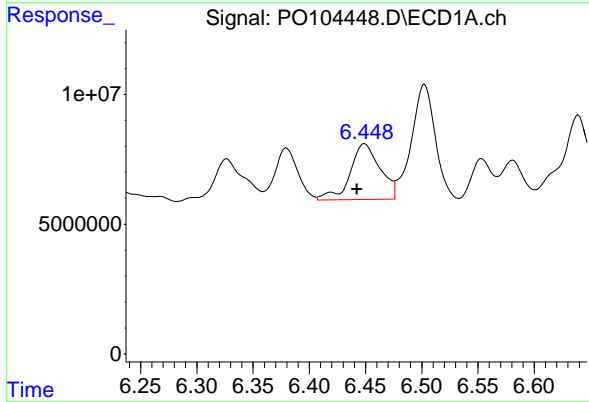
R.T.: 6.033 min  
 Delta R.T.: -0.008 min  
 Response: 19350874  
 Conc: 74.76 ng/ml

Instrument :  
 ECD\_O  
 ClientSampleId :  
 624-07



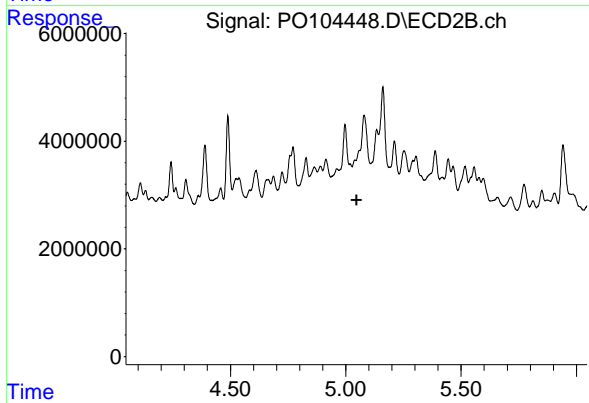
#23 AR-1248-3

R.T.: 4.890 min  
 Delta R.T.: 0.011 min  
 Response: 2065236  
 Conc: 53.25 ng/ml



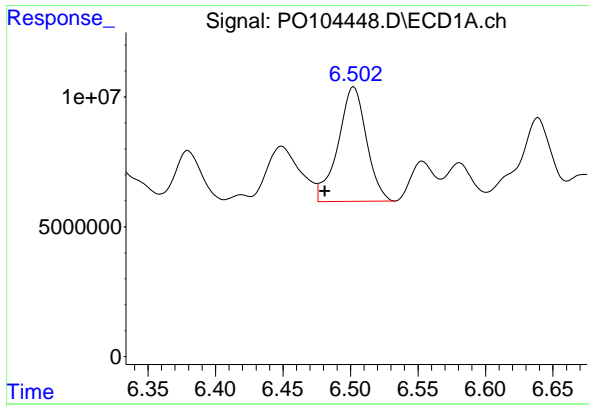
#24 AR-1248-4

R.T.: 6.449 min  
 Delta R.T.: 0.007 min  
 Response: 39899382  
 Conc: 136.88 ng/ml



#24 AR-1248-4

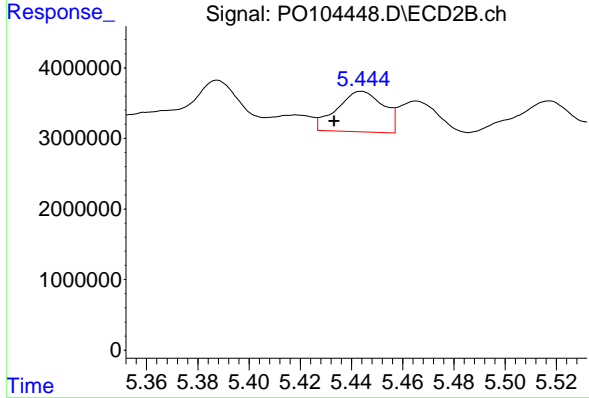
R.T.: 5.040 min  
 Delta R.T.: -0.007 min  
 Response: -316346  
 Conc: N.D.



#25 AR-1248-5

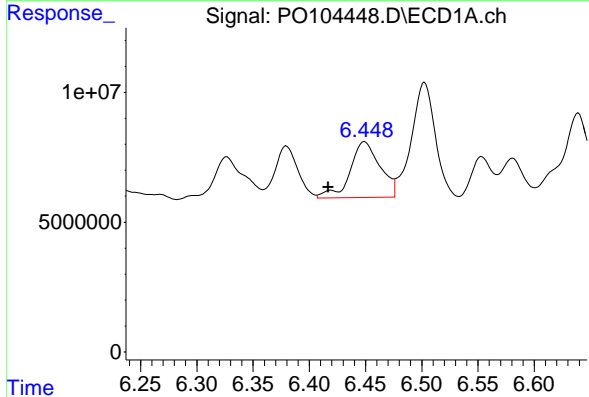
R.T.: 6.503 min  
 Delta R.T.: 0.021 min  
 Response: 65094903  
 Conc: 229.30 ng/ml

Instrument :  
 ECD\_O  
 ClientSampleId :  
 624-07



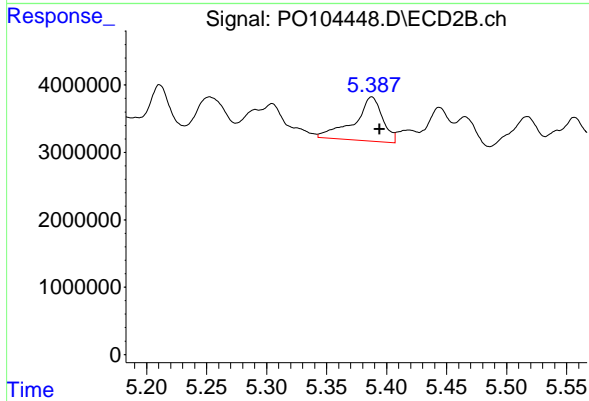
#25 AR-1248-5

R.T.: 5.444 min  
 Delta R.T.: 0.011 min  
 Response: 7232699  
 Conc: 124.79 ng/ml



#26 AR-1254-1

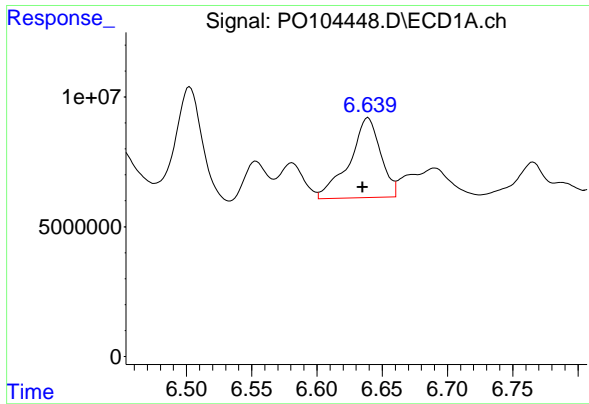
R.T.: 6.449 min  
 Delta R.T.: 0.032 min  
 Response: 39899382  
 Conc: 134.03 ng/ml



#26 AR-1254-1

R.T.: 5.388 min  
 Delta R.T.: -0.006 min  
 Response: 10881780  
 Conc: 155.78 ng/ml

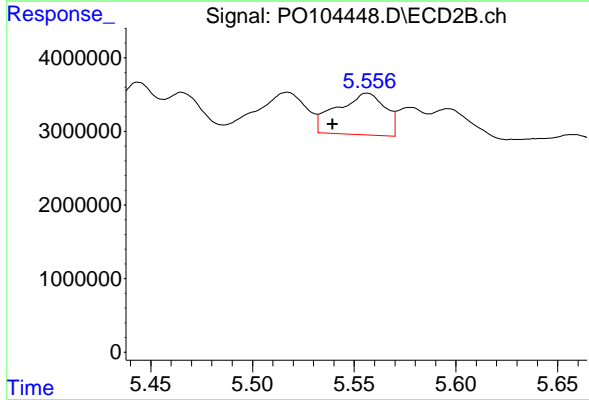




#27 AR-1254-2

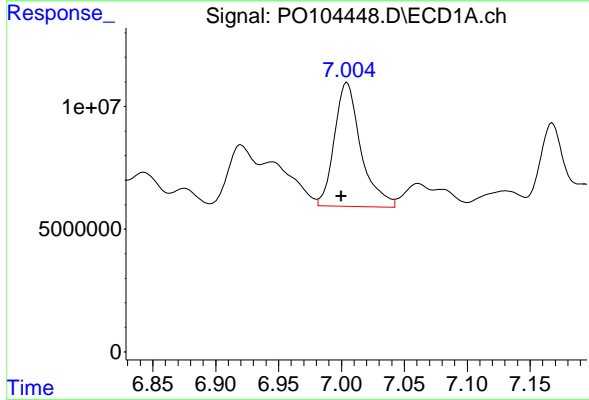
R.T.: 6.639 min  
 Delta R.T.: 0.004 min  
 Response: 51421354  
 Conc: 116.15 ng/ml

Instrument :  
 ECD\_O  
 ClientSampleId :  
 624-07



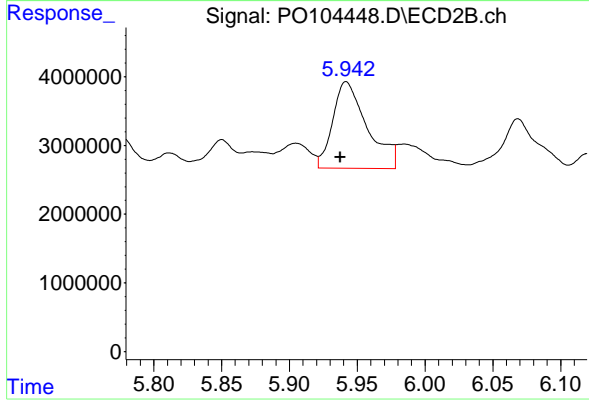
#27 AR-1254-2

R.T.: 5.556 min  
 Delta R.T.: 0.017 min  
 Response: 9321037  
 Conc: 149.25 ng/ml



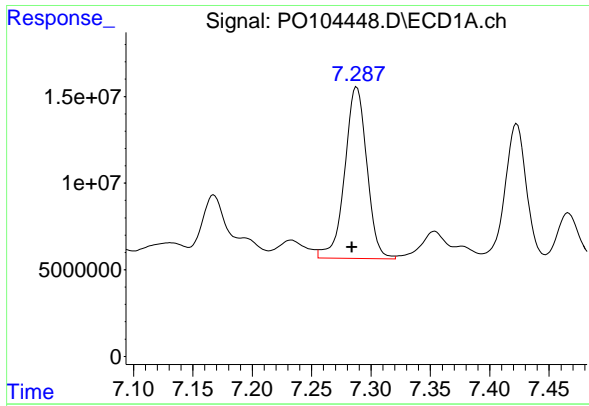
#28 AR-1254-3

R.T.: 7.004 min  
 Delta R.T.: 0.005 min  
 Response: 73835729  
 Conc: 163.79 ng/ml



#28 AR-1254-3

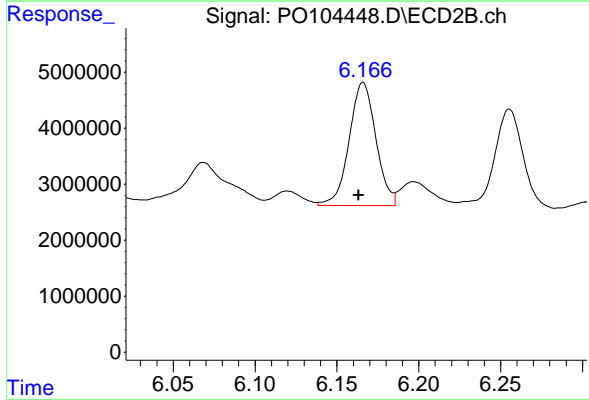
R.T.: 5.942 min  
 Delta R.T.: 0.004 min  
 Response: 22306071  
 Conc: 185.97 ng/ml



#29 AR-1254-4

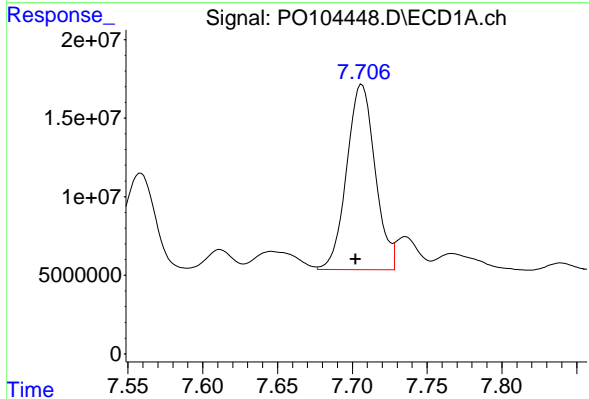
R.T.: 7.288 min  
 Delta R.T.: 0.004 min  
 Response: 128468849  
 Conc: 385.57 ng/ml

Instrument :  
 ECD\_O  
 ClientSampleId :  
 624-07



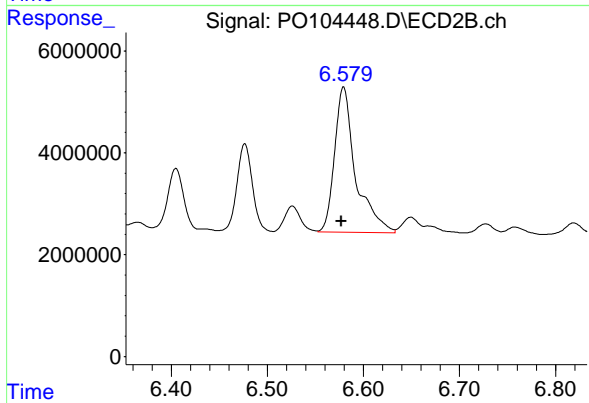
#29 AR-1254-4

R.T.: 6.166 min  
 Delta R.T.: 0.003 min  
 Response: 25041824  
 Conc: 312.08 ng/ml



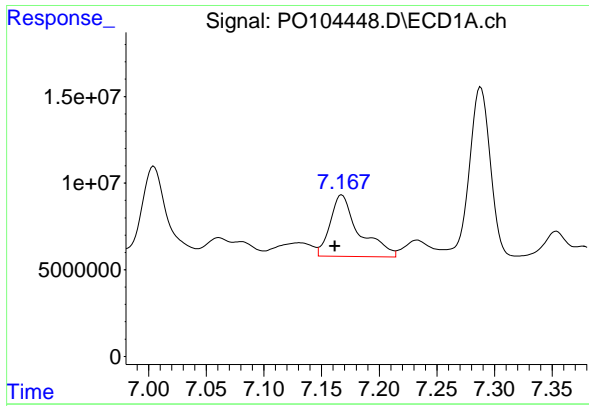
#30 AR-1254-5

R.T.: 7.706 min  
 Delta R.T.: 0.004 min  
 Response: 155566776  
 Conc: 449.77 ng/ml



#30 AR-1254-5

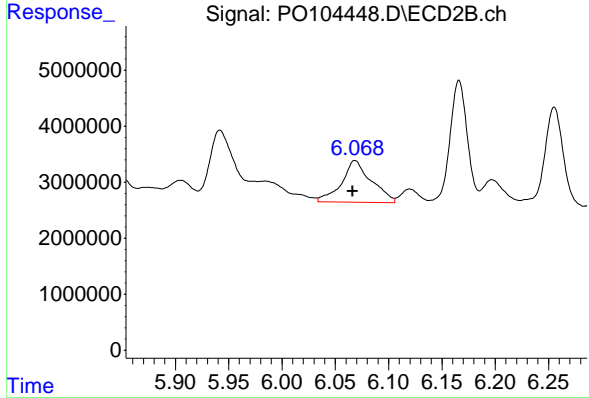
R.T.: 6.579 min  
 Delta R.T.: 0.002 min  
 Response: 43262458  
 Conc: 371.12 ng/ml



#31 AR-1260-1

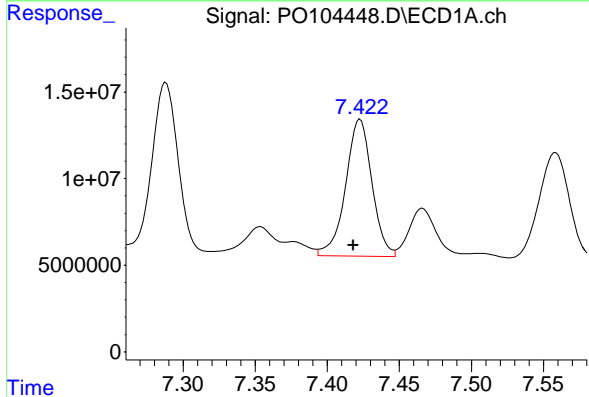
R.T.: 7.168 min  
 Delta R.T.: 0.006 min  
 Response: 61508567  
 Conc: 180.57 ng/ml

Instrument :  
 ECD\_O  
 ClientSampleId :  
 624-07



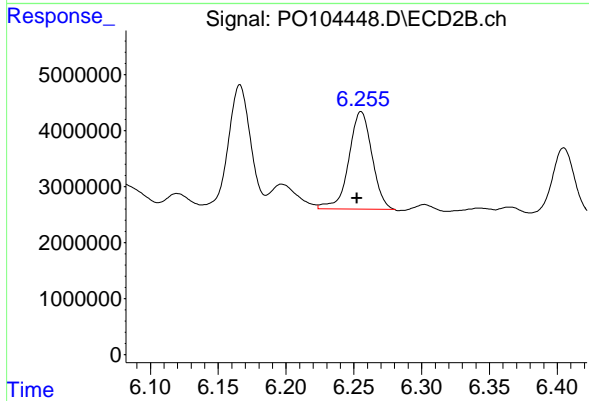
#31 AR-1260-1

R.T.: 6.069 min  
 Delta R.T.: 0.002 min  
 Response: 14593590  
 Conc: 208.10 ng/ml



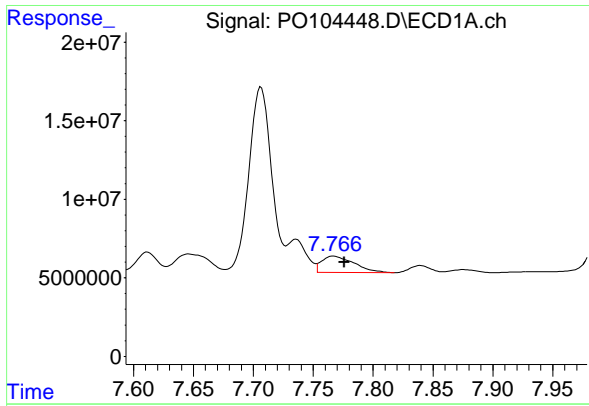
#32 AR-1260-2

R.T.: 7.423 min  
 Delta R.T.: 0.005 min  
 Response: 100510448  
 Conc: 257.48 ng/ml



#32 AR-1260-2

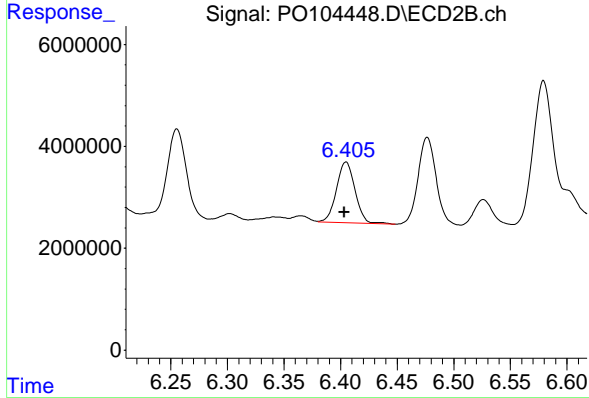
R.T.: 6.255 min  
 Delta R.T.: 0.003 min  
 Response: 20495901  
 Conc: 218.63 ng/ml



#33 AR-1260-3

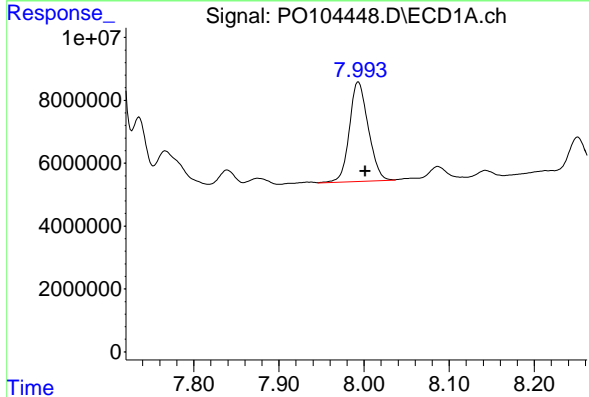
R.T.: 7.767 min  
 Delta R.T.: -0.009 min  
 Response: 19649252  
 Conc: 67.90 ng/ml

Instrument :  
 ECD\_O  
 ClientSampleId :  
 624-07



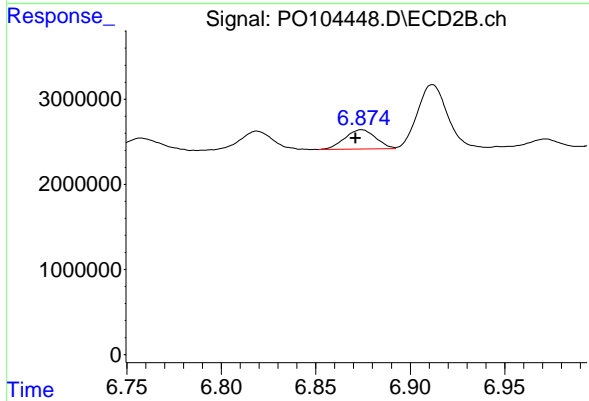
#33 AR-1260-3

R.T.: 6.405 min  
 Delta R.T.: 0.001 min  
 Response: 13660489  
 Conc: 149.55 ng/ml



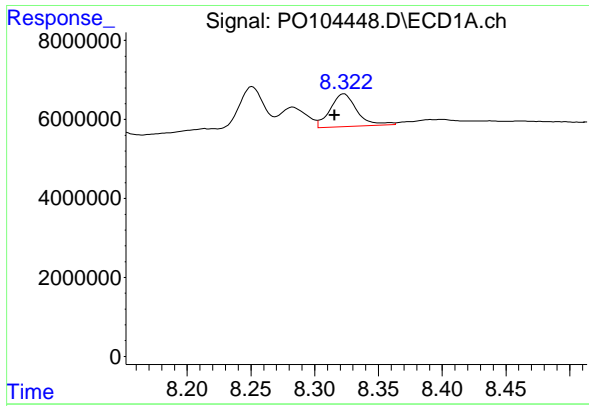
#34 AR-1260-4

R.T.: 7.994 min  
 Delta R.T.: -0.008 min  
 Response: 48694288  
 Conc: 151.73 ng/ml



#34 AR-1260-4

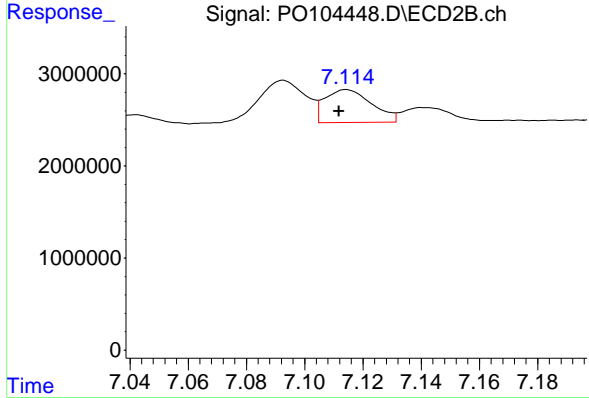
R.T.: 6.874 min  
 Delta R.T.: 0.003 min  
 Response: 2599814  
 Conc: 32.05 ng/ml



#35 AR-1260-5

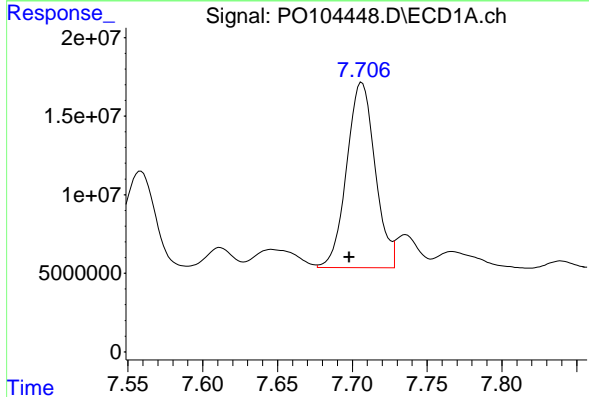
R.T.: 8.323 min  
 Delta R.T.: 0.007 min  
 Response: 11959744  
 Conc: 19.02 ng/ml

Instrument :  
 ECD\_O  
 ClientSampleId :  
 624-07



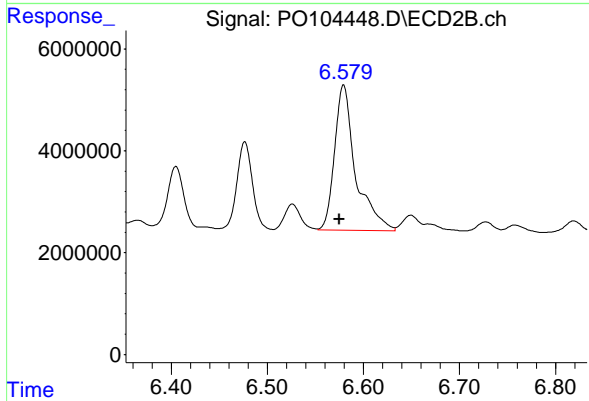
#35 AR-1260-5

R.T.: 7.114 min  
 Delta R.T.: 0.003 min  
 Response: 3968177  
 Conc: 14.10 ng/ml



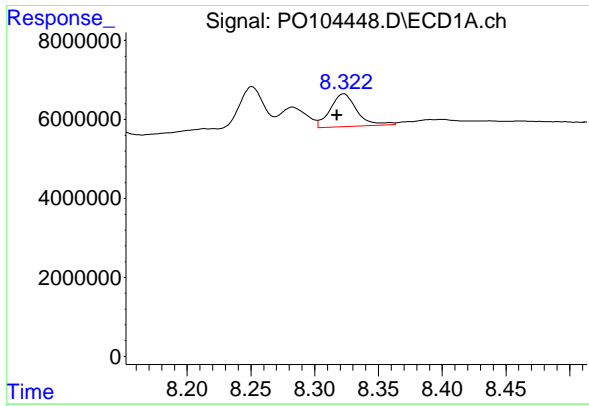
#36 AR-1262-1

R.T.: 7.706 min  
 Delta R.T.: 0.008 min  
 Response: 155566776  
 Conc: 545.43 ng/ml



#36 AR-1262-1

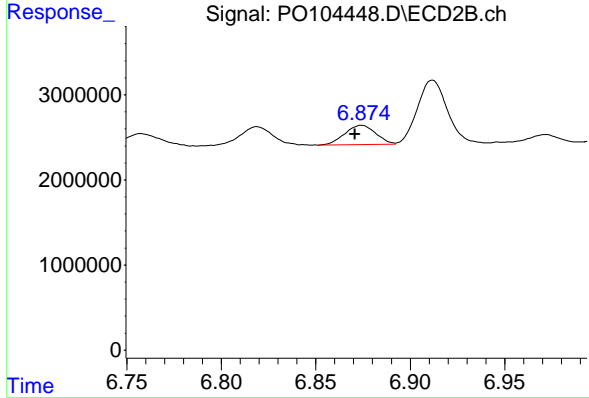
R.T.: 6.579 min  
 Delta R.T.: 0.005 min  
 Response: 43262458  
 Conc: 655.90 ng/ml



#37 AR-1262-2

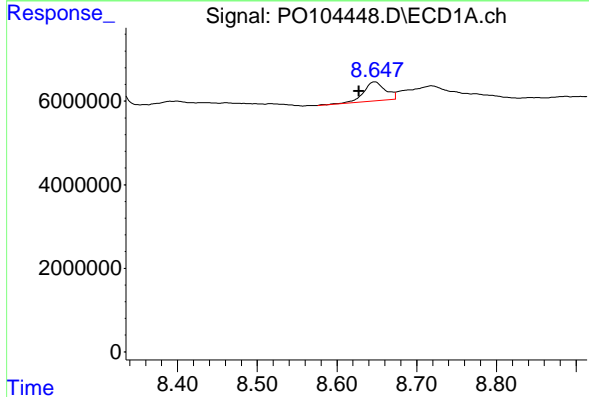
R.T.: 8.323 min  
 Delta R.T.: 0.006 min  
 Response: 11959744  
 Conc: 16.35 ng/ml

Instrument :  
 ECD\_O  
 ClientSampleId :  
 624-07



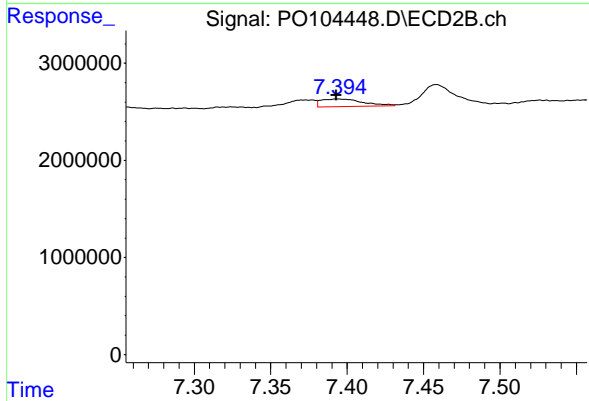
#37 AR-1262-2

R.T.: 6.874 min  
 Delta R.T.: 0.004 min  
 Response: 2599814  
 Conc: 23.58 ng/ml



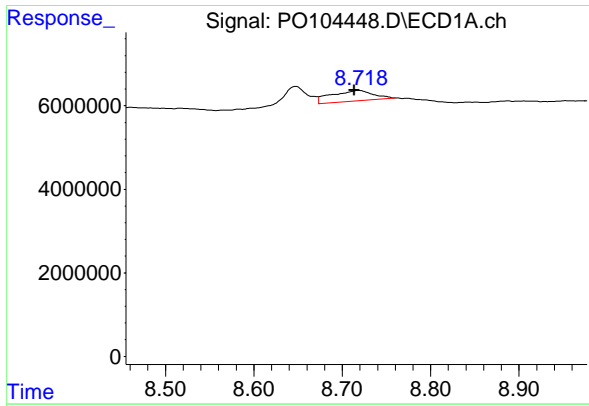
#38 AR-1262-3

R.T.: 8.647 min  
 Delta R.T.: 0.020 min  
 Response: 8548002  
 Conc: 17.08 ng/ml



#38 AR-1262-3

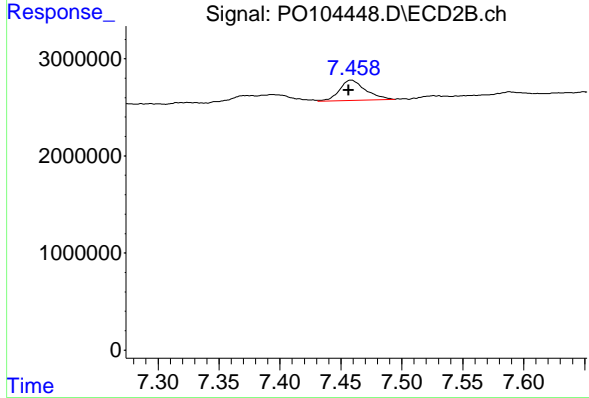
R.T.: 7.394 min  
 Delta R.T.: 0.000 min  
 Response: 1489500  
 Conc: 9.55 ng/ml



#39 AR-1262-4

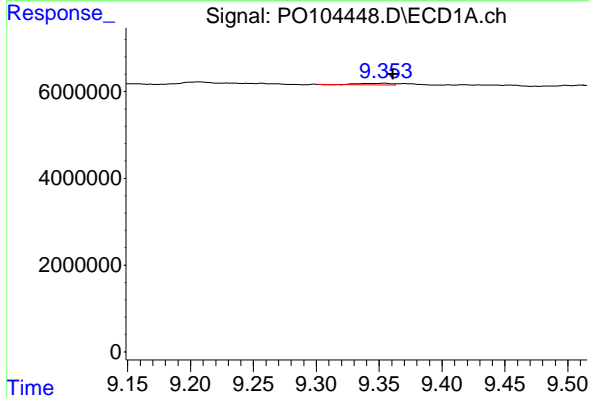
R.T.: 8.719 min  
 Delta R.T.: 0.005 min  
 Response: 8496393  
 Conc: 22.36 ng/ml

Instrument :  
 ECD\_O  
 ClientSampleId :  
 624-07



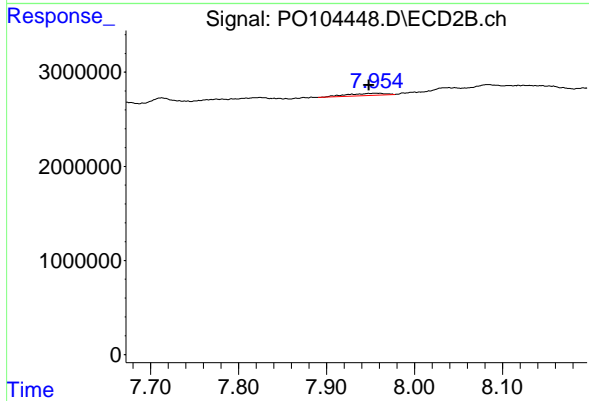
#39 AR-1262-4

R.T.: 7.458 min  
 Delta R.T.: 0.002 min  
 Response: 3115993  
 Conc: 11.63 ng/ml



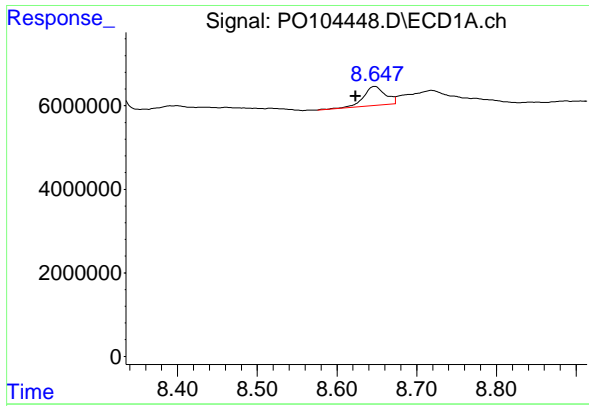
#40 AR-1262-5

R.T.: 9.353 min  
 Delta R.T.: -0.008 min  
 Response: 608880  
 Conc: 2.29 ng/ml



#40 AR-1262-5

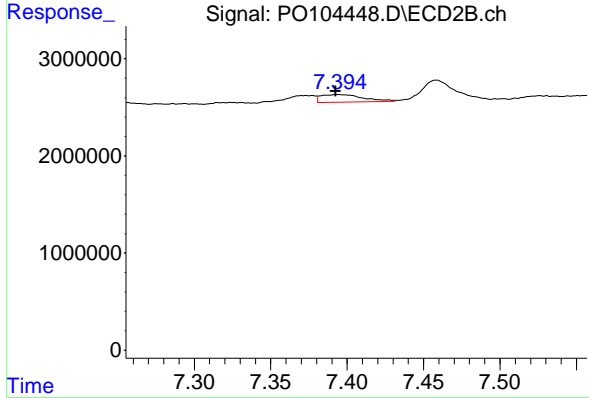
R.T.: 7.954 min  
 Delta R.T.: 0.006 min  
 Response: 693288  
 Conc: 4.55 ng/ml



#41 AR-1268-1

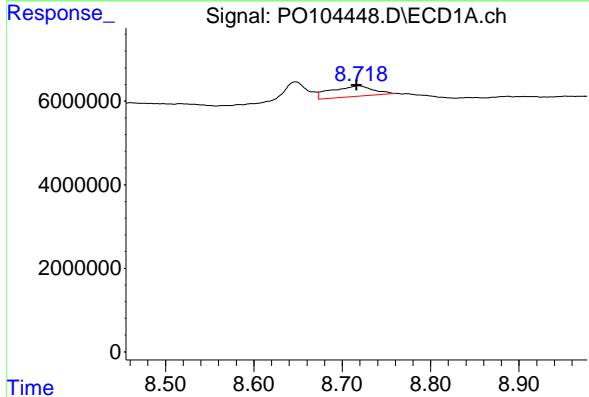
R.T.: 8.647 min  
 Delta R.T.: 0.024 min  
 Response: 8548002  
 Conc: 10.48 ng/ml

Instrument : ECD\_O  
 ClientSampleId : 624-07



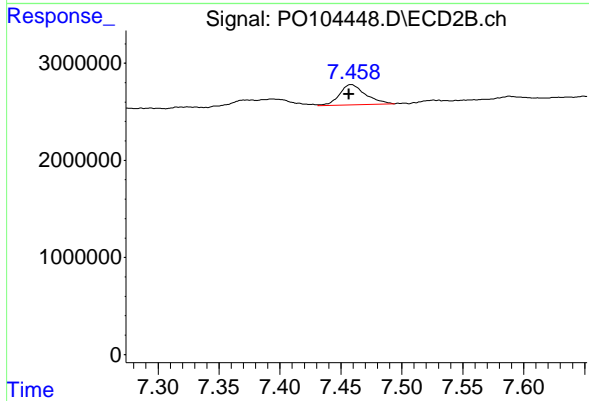
#41 AR-1268-1

R.T.: 7.394 min  
 Delta R.T.: 0.001 min  
 Response: 1489500  
 Conc: 3.45 ng/ml



#42 AR-1268-2

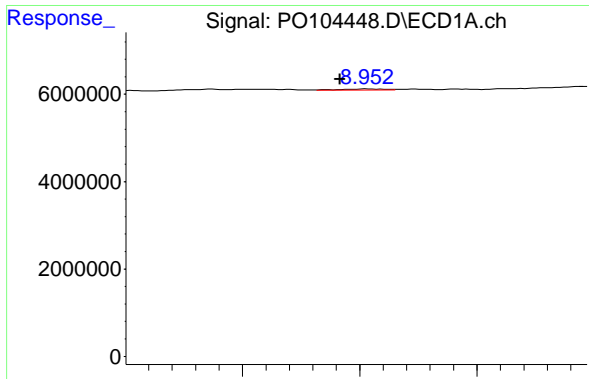
R.T.: 8.719 min  
 Delta R.T.: 0.002 min  
 Response: 8496393  
 Conc: 11.40 ng/ml



#42 AR-1268-2

R.T.: 7.458 min  
 Delta R.T.: 0.002 min  
 Response: 3115993  
 Conc: 7.20 ng/ml

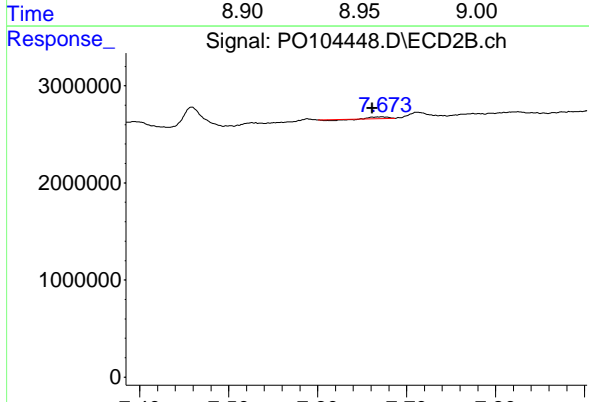




#43 AR-1268-3

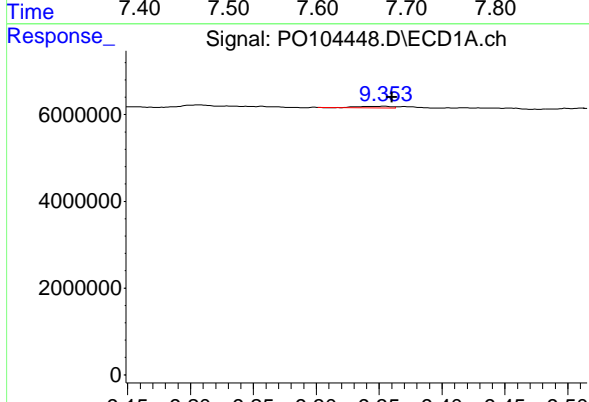
R.T.: 8.953 min  
 Delta R.T.: 0.012 min  
 Response: 298882  
 Conc: 0.48 ng/ml

Instrument :  
 ECD\_O  
 ClientSampleId :  
 624-07



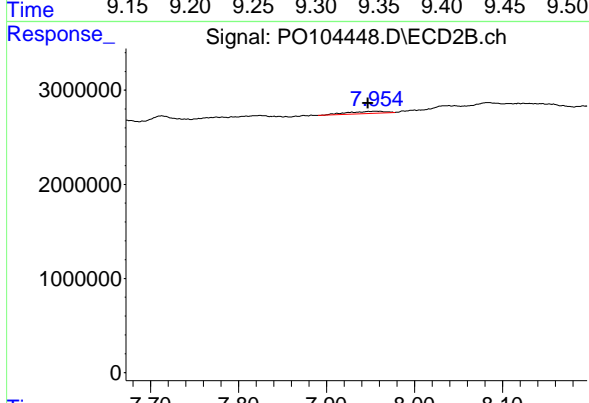
#43 AR-1268-3

R.T.: 7.672 min  
 Delta R.T.: 0.011 min  
 Response: 111572  
 Conc: 0.29 ng/ml



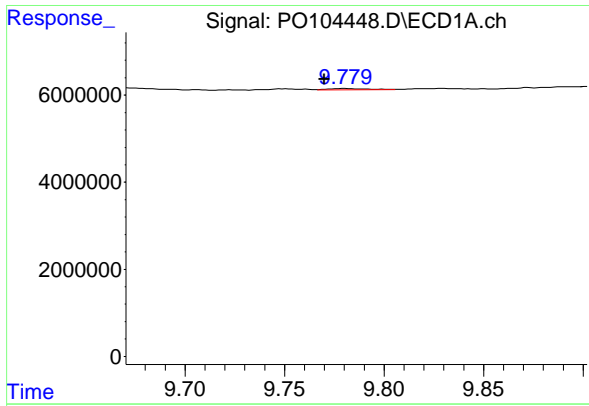
#44 AR-1268-4

R.T.: 9.353 min  
 Delta R.T.: -0.007 min  
 Response: 608880  
 Conc: 2.19 ng/ml



#44 AR-1268-4

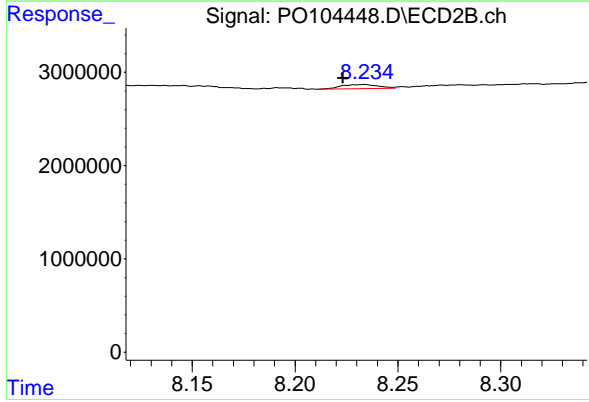
R.T.: 7.954 min  
 Delta R.T.: 0.007 min  
 Response: 693288  
 Conc: 4.32 ng/ml



#45 AR-1268-5

R.T.: 9.781 min  
 Delta R.T.: 0.011 min  
 Response: 418430  
 Conc: 0.21 ng/ml

Instrument :  
 ECD\_O  
 ClientSampleId :  
 624-07



#45 AR-1268-5

R.T.: 8.234 min  
 Delta R.T.: 0.010 min  
 Response: 559372  
 Conc: 0.46 ng/ml