

Data Path : Z:\pestpcbsrv\HPCHEM1\ECD\_0\Data\P0062722\  
 Data File : P0087420.D  
 Signal(s) : Signal #1: ECD1A.ch Signal #2: ECD2B.ch  
 Acq On : 27 Jun 2022 15:05  
 Operator : YP/AJ  
 Sample : AR1660ICC1000  
 Misc :  
 ALS Vial : 3 Sample Multiplier: 1

Instrument :  
 ECD\_0  
 ClientSampleId :  
 AR1660ICC1000

Integration File signal 1: autoint1.e  
 Integration File signal 2: autoint2.e  
 Quant Time: Jun 27 16:32:30 2022  
 Quant Method : Z:\pestpcbsrv\HPCHEM1\ECD\_0\methods\P0062722.M  
 Quant Title : GC EXTRACTABLES  
 QLast Update : Mon Jun 27 16:30:30 2022  
 Response via : Initial Calibration  
 Integrator: ChemStation

Volume Inj. : 2 µl  
 Signal #1 Phase : ZB-MR2 Signal #2 Phase: ZB-MR2  
 Signal #1 Info : 30Mx0.32mmx 0.50µ Signal #2 Info : 30M x 0.32mm x 0.25µm

Compound	RT#1	RT#2	Resp#1	Resp#2	ng/ml	ng/ml
-----						
System Monitoring Compounds						
1) SA Tetrachlo...	4.451	3.611	249.8E6	95909311	94.000	93.903
2) SA Decachlor...	10.305	8.614	189.6E6	83423651	90.187	101.623
Target Compounds						
3) L1 AR-1016-1	5.627	4.690	81930880	37184377	894.180	900.492
4) L1 AR-1016-2	5.649	4.708	114.1E6	56405707	883.121	987.285
5) L1 AR-1016-3	5.712	4.884	69940976	27785321	879.714	895.333
6) L1 AR-1016-4	5.812	4.926	56233091	21939358	891.782	870.582
7) L1 AR-1016-5	6.108	5.138	51872325	27785300	834.878	853.868
31) L7 AR-1260-1	7.242	6.172	104.6E6	50083002	903.004	863.074
32) L7 AR-1260-2	7.498	6.360	123.6E6	58937978	885.719	799.333
33) L7 AR-1260-3	7.860	6.513	81010560	55249605	833.918	802.986
34) L7 AR-1260-4	8.088	6.986	94739428	43250176	884.380	931.590
35) L7 AR-1260-5	8.417	7.228	186.2E6	104.1E6	912.529	1020.149

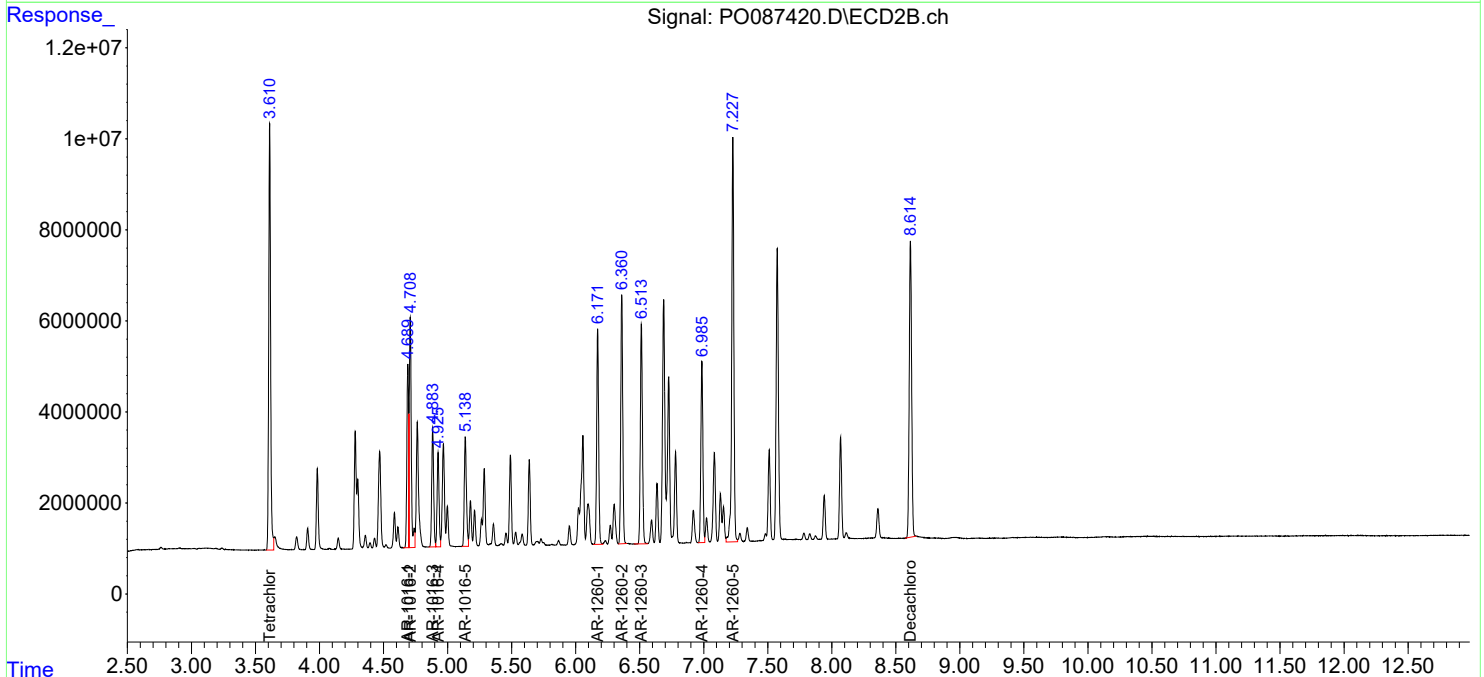
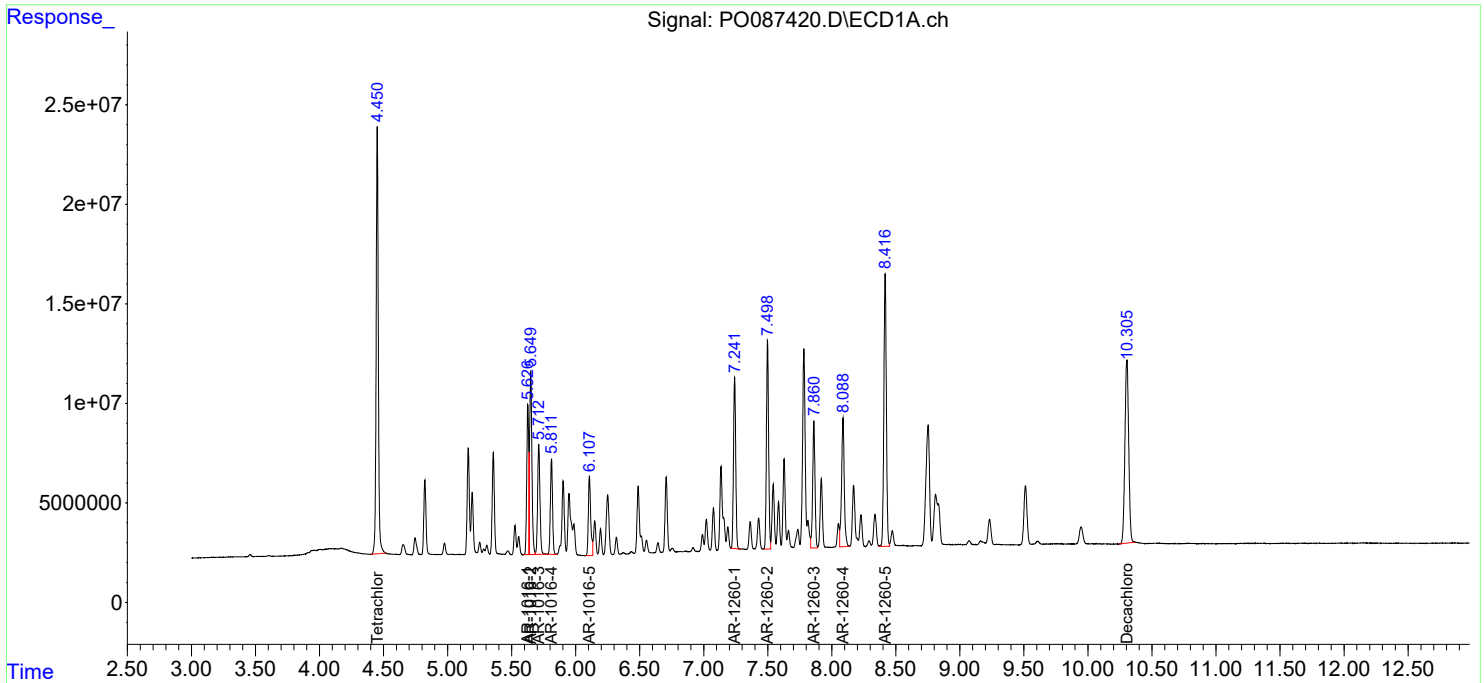
(f)=RT Delta > 1/2 Window (#)=Amounts differ by > 25% (m)=manual int.

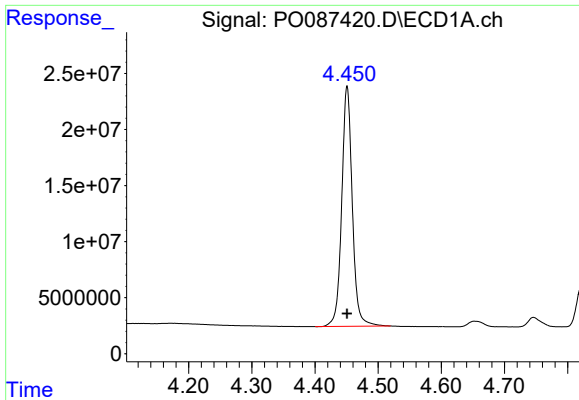
Data Path : Z:\pestpcbsrv\HPCHEM1\ECD\_O\Data\P0062722\  
 Data File : P0087420.D  
 Signal(s) : Signal #1: ECD1A.ch Signal #2: ECD2B.ch  
 Acq On : 27 Jun 2022 15:05  
 Operator : YP/AJ  
 Sample : AR1660ICC1000  
 Misc :  
 ALS Vial : 3 Sample Multiplier: 1

Instrument :  
 ECD\_O  
 ClientSampleId :  
 AR1660ICC1000

Integration File signal 1: autoint1.e  
 Integration File signal 2: autoint2.e  
 Quant Time: Jun 27 16:32:30 2022  
 Quant Method : Z:\pestpcbsrv\HPCHEM1\ECD\_O\methods\P0062722.M  
 Quant Title : GC EXTRACTABLES  
 QLast Update : Mon Jun 27 16:30:30 2022  
 Response via : Initial Calibration  
 Integrator: ChemStation

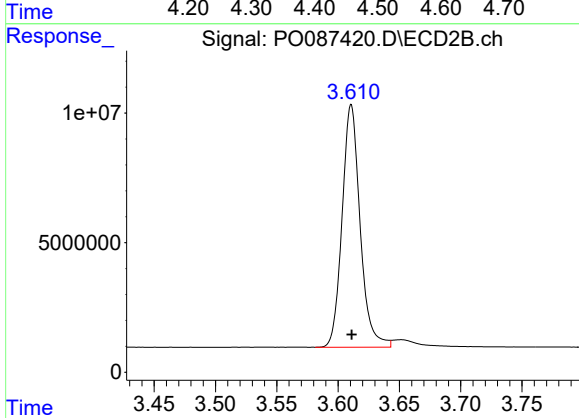
Volume Inj. : 2 µl  
 Signal #1 Phase : ZB-MR1 Signal #2 Phase: ZB-MR2  
 Signal #1 Info : 30Mx0.32mmx 0.50µ Signal #2 Info : 30M x 0.32mm x 0.25µm



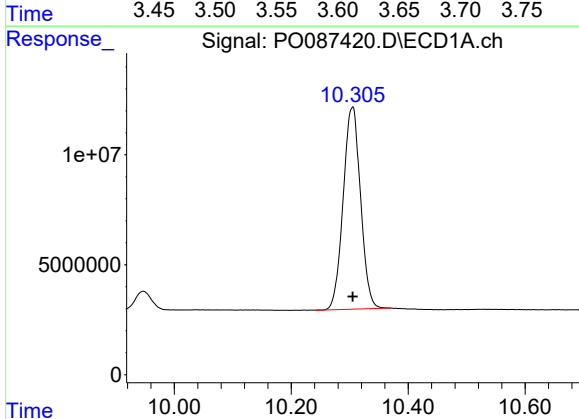


#1 Tetrachloro-m-xylene  
R.T.: 4.451 min  
Delta R.T.: 0.000 min  
Response: 249844115  
Conc: 94.00 ng/ml

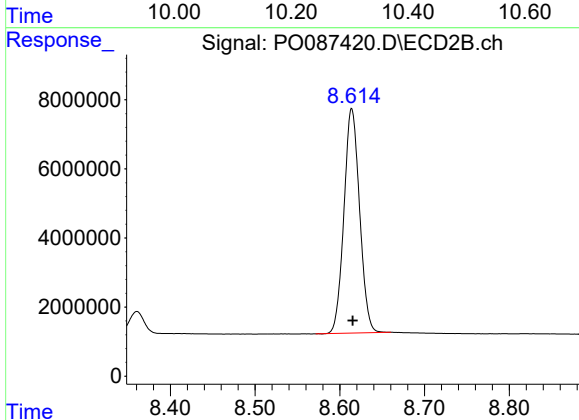
Instrument :  
ECD\_O  
ClientSampleId :  
AR1660ICC1000



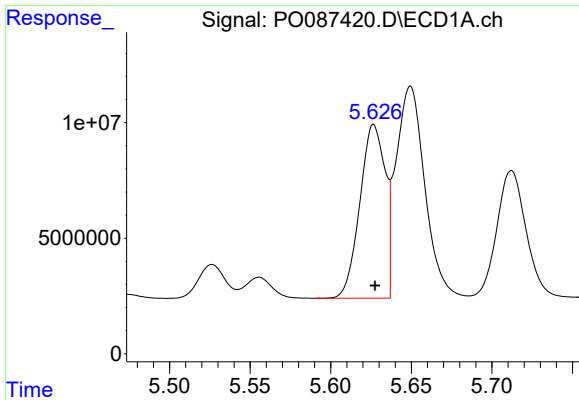
#1 Tetrachloro-m-xylene  
R.T.: 3.611 min  
Delta R.T.: 0.000 min  
Response: 95909311  
Conc: 93.90 ng/ml



#2 Decachlorobiphenyl  
R.T.: 10.305 min  
Delta R.T.: 0.000 min  
Response: 189553175  
Conc: 90.19 ng/ml



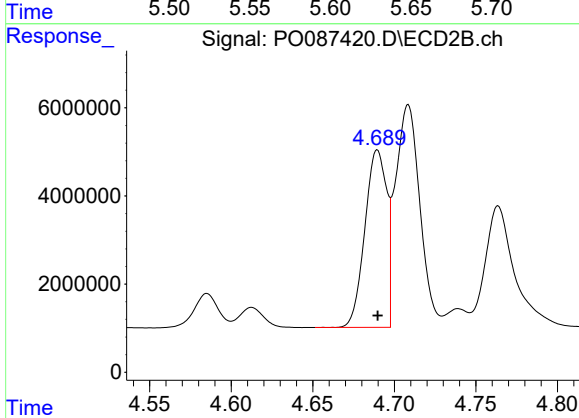
#2 Decachlorobiphenyl  
R.T.: 8.614 min  
Delta R.T.: -0.001 min  
Response: 83423651  
Conc: 101.62 ng/ml



#3 AR-1016-1

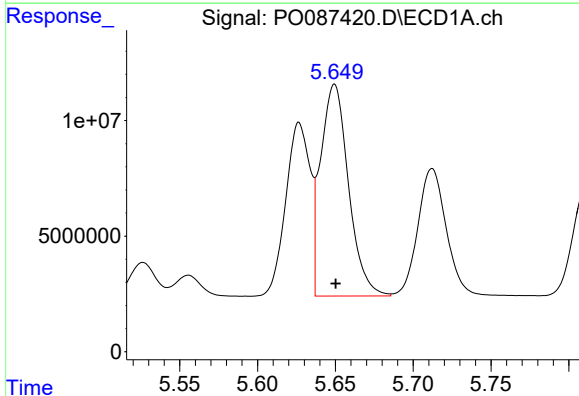
R.T.: 5.627 min  
 Delta R.T.: 0.000 min  
 Response: 81930880  
 Conc: 894.18 ng/ml

Instrument :  
 ECD\_O  
 ClientSampleId :  
 AR1660ICC1000



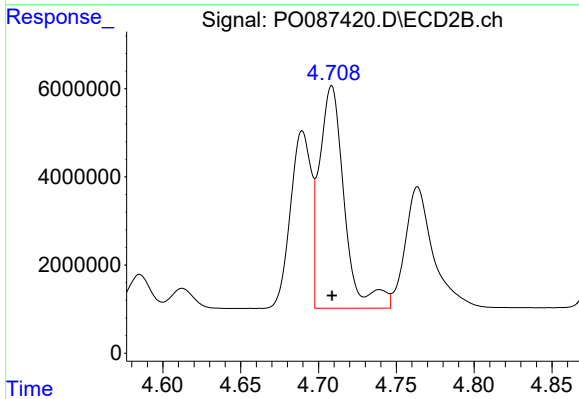
#3 AR-1016-1

R.T.: 4.690 min  
 Delta R.T.: 0.000 min  
 Response: 37184377  
 Conc: 900.49 ng/ml



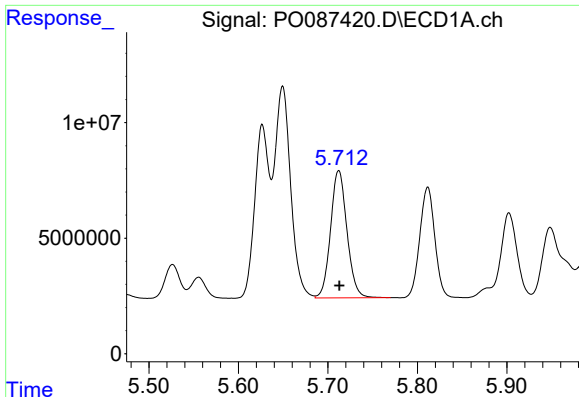
#4 AR-1016-2

R.T.: 5.649 min  
 Delta R.T.: 0.000 min  
 Response: 114141848  
 Conc: 883.12 ng/ml



#4 AR-1016-2

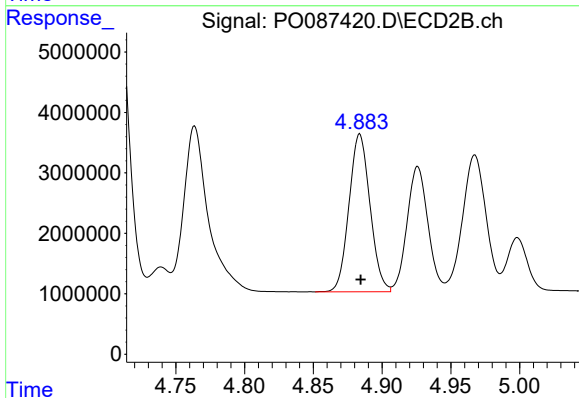
R.T.: 4.708 min  
 Delta R.T.: 0.000 min  
 Response: 56405707  
 Conc: 987.29 ng/ml



#5 AR-1016-3

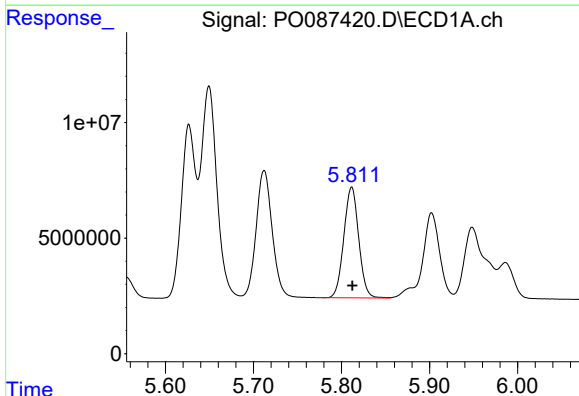
R.T.: 5.712 min  
 Delta R.T.: 0.000 min  
 Response: 69940976  
 Conc: 879.71 ng/ml

Instrument :  
 ECD\_O  
 ClientSampleId :  
 AR1660ICC1000



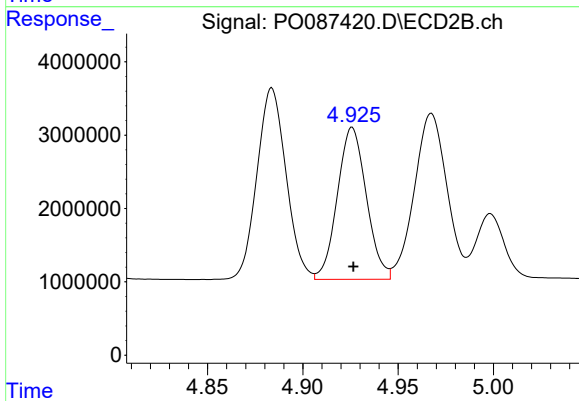
#5 AR-1016-3

R.T.: 4.884 min  
 Delta R.T.: 0.000 min  
 Response: 27785321  
 Conc: 895.33 ng/ml



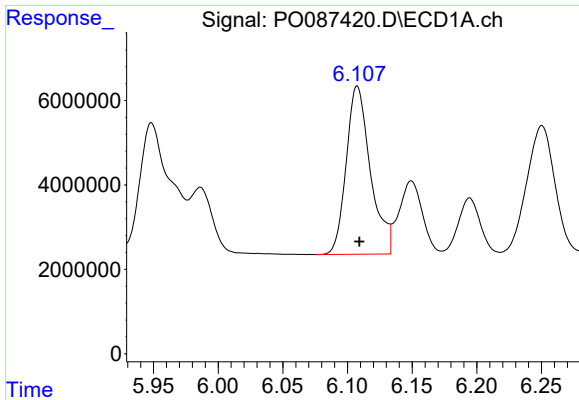
#6 AR-1016-4

R.T.: 5.812 min  
 Delta R.T.: 0.000 min  
 Response: 56233091  
 Conc: 891.78 ng/ml



#6 AR-1016-4

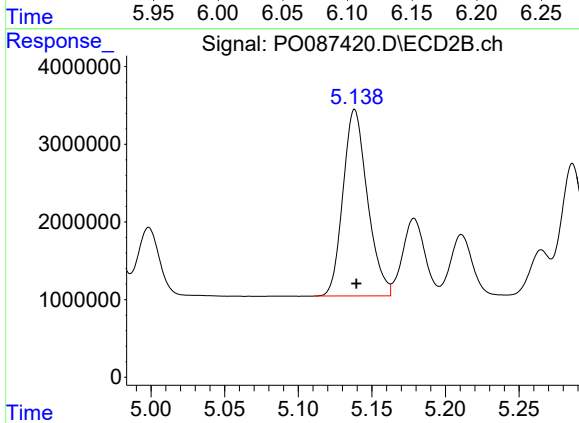
R.T.: 4.926 min  
 Delta R.T.: 0.000 min  
 Response: 21939358  
 Conc: 870.58 ng/ml



#7 AR-1016-5

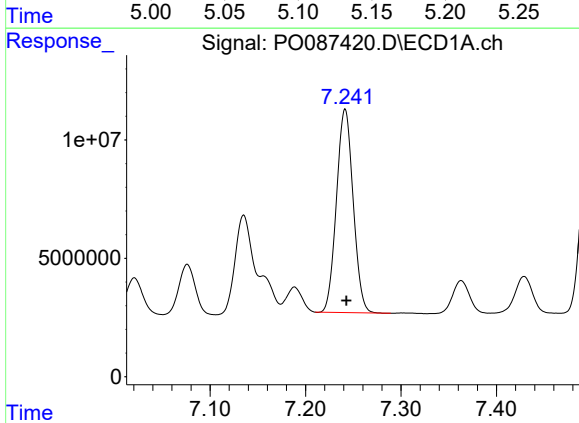
R.T.: 6.108 min  
 Delta R.T.: -0.002 min  
 Response: 51872325  
 Conc: 834.88 ng/ml

Instrument :  
 ECD\_O  
 ClientSampleId :  
 AR1660ICC1000



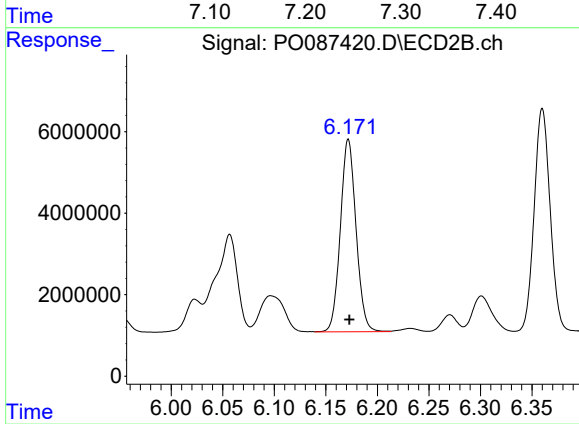
#7 AR-1016-5

R.T.: 5.138 min  
 Delta R.T.: 0.000 min  
 Response: 27785300  
 Conc: 853.87 ng/ml



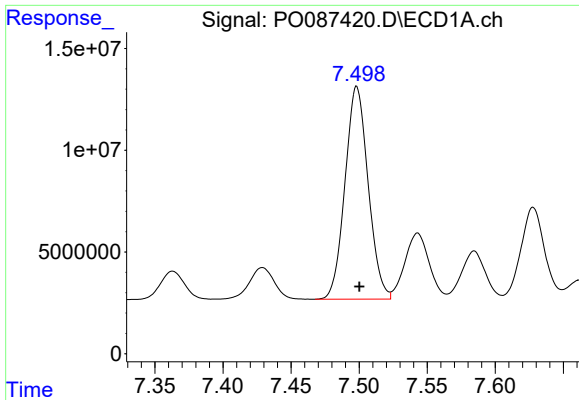
#31 AR-1260-1

R.T.: 7.242 min  
 Delta R.T.: -0.001 min  
 Response: 104621712  
 Conc: 903.00 ng/ml



#31 AR-1260-1

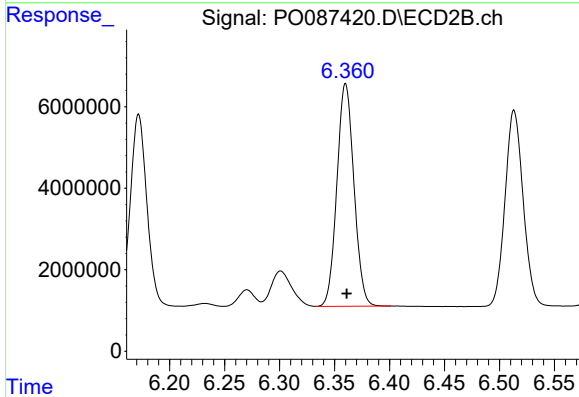
R.T.: 6.172 min  
 Delta R.T.: 0.000 min  
 Response: 50083002  
 Conc: 863.07 ng/ml



#32 AR-1260-2

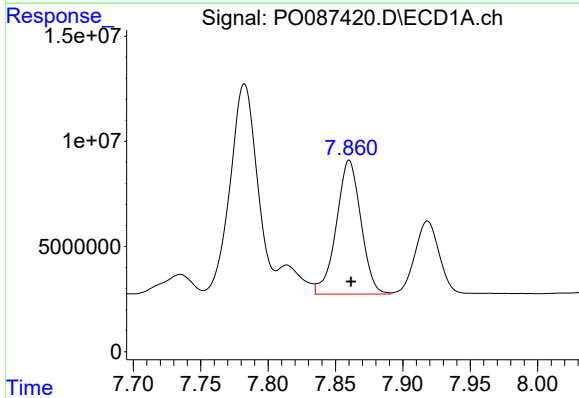
R.T.: 7.498 min  
 Delta R.T.: -0.002 min  
 Response: 123648034  
 Conc: 885.72 ng/ml

Instrument :  
 ECD\_O  
 ClientSampleId :  
 AR1660ICC1000



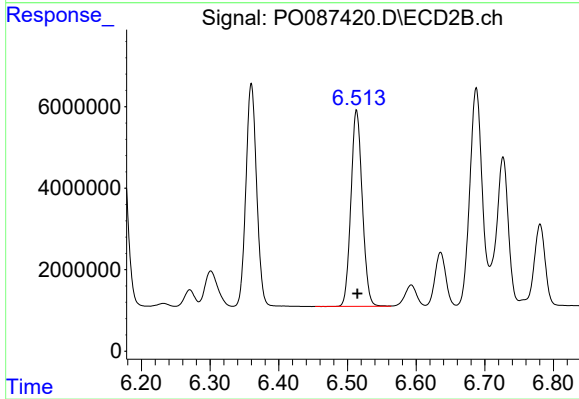
#32 AR-1260-2

R.T.: 6.360 min  
 Delta R.T.: 0.000 min  
 Response: 58937978  
 Conc: 799.33 ng/ml



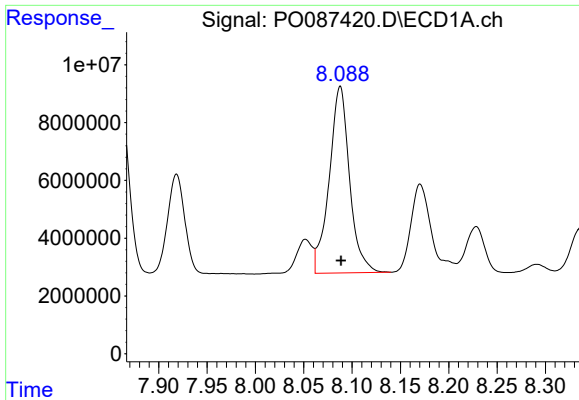
#33 AR-1260-3

R.T.: 7.860 min  
 Delta R.T.: -0.001 min  
 Response: 81010560  
 Conc: 833.92 ng/ml



#33 AR-1260-3

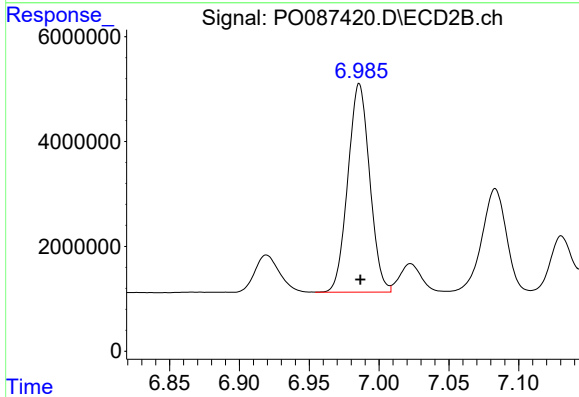
R.T.: 6.513 min  
 Delta R.T.: -0.001 min  
 Response: 55249605  
 Conc: 802.99 ng/ml



#34 AR-1260-4

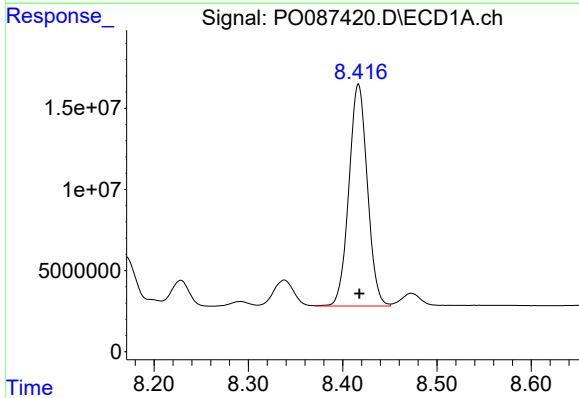
R.T.: 8.088 min  
 Delta R.T.: 0.000 min  
 Response: 94739428  
 Conc: 884.38 ng/ml

Instrument :  
 ECD\_O  
 ClientSampleId :  
 AR1660ICC1000



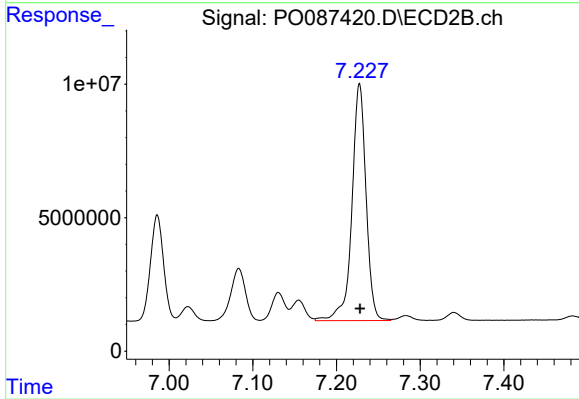
#34 AR-1260-4

R.T.: 6.986 min  
 Delta R.T.: 0.000 min  
 Response: 43250176  
 Conc: 931.59 ng/ml



#35 AR-1260-5

R.T.: 8.417 min  
 Delta R.T.: 0.000 min  
 Response: 186163332  
 Conc: 912.53 ng/ml



#35 AR-1260-5

R.T.: 7.228 min  
 Delta R.T.: 0.000 min  
 Response: 104144077  
 Conc: 1020.15 ng/ml