

Data Path : Z:\pestpcbsrv\HPCHEM1\ECD_0\Data\P0062722\
 Data File : P0087491.D
 Signal(s) : Signal #1: ECD1A.ch Signal #2: ECD2B.ch
 Acq On : 28 Jun 2022 13:12
 Operator : YP/AJ
 Sample : N3502-05
 Misc :
 ALS Vial : 70 Sample Multiplier: 1

Instrument :
 ECD_0
 ClientSampleId :

Integration File signal 1: autoint1.e
 Integration File signal 2: autoint2.e
 Quant Time: Jun 28 15:13:44 2022
 Quant Method : Z:\pestpcbsrv\HPCHEM1\ECD_0\methods\P0062722.M
 Quant Title : GC EXTRACTABLES
 QLast Update : Tue Jun 28 02:46:21 2022
 Response via : Initial Calibration
 Integrator: ChemStation

Volume Inj. : 2 µl
 Signal #1 Phase : ZB-MR1 Signal #2 Phase: ZB-MR2
 Signal #1 Info : 30Mx0.32mmx 0.50µ Signal #2 Info : 30M x 0.32mm x 0.25µm

Compound	RT#1	RT#2	Resp#1	Resp#2	ng/ml	ng/ml
System Monitoring Compounds						
1) SA Tetrachlo...	4.451	3.611	47374408	19897376	18.303	20.221
2) SA Decachlor...	10.302	8.615	25531808	10045214	12.499	12.391
Target Compounds						
3) L1 AR-1016-1	5.558f	4.689	1015289	354663	11.312	8.869
4) L1 AR-1016-2	0.000	4.689	0	354663	N.D.	6.362 #
5) L1 AR-1016-3	0.000	4.842f	0	56580	N.D.	1.922 #
6) L1 AR-1016-4	0.000	4.992f	0	218125	N.D.	9.077 #
7) L1 AR-1016-5	6.128	5.075f	466945	268792	7.791	8.788
8) L2 AR-1221-1	4.660	3.893f	13200227	4212682	429.126	358.716
9) L2 AR-1221-2	4.759	3.893	1337910	4212682	59.025	473.827 #
10) L2 AR-1221-3	4.803	0.000	209679	0	2.998	N.D. #
11) L3 AR-1232-1	4.803	0.000	209679	0	3.203	N.D. #
12) L3 AR-1232-2	5.168	4.689	355058	354663	10.996	14.545 #
13) L3 AR-1232-3	0.000	4.842f	0	56580	N.D.	4.556 #
14) L3 AR-1232-4	0.000	4.992	0	218125	N.D.	19.238 #
15) L3 AR-1232-5	0.000	5.075f	0	268792	N.D.	21.420 #
16) L4 AR-1242-1	0.000	4.689	0	354663	N.D.	12.427 #
17) L4 AR-1242-2	0.000	4.689	0	354663	N.D.	9.092 #
18) L4 AR-1242-3	0.000	4.842f	0	56580	N.D.	2.714 #
19) L4 AR-1242-4	0.000	4.992	0	218125	N.D.	10.325 #
20) L4 AR-1242-5	6.552	5.500	1368947	1834420	25.784	70.177 #
21) L5 AR-1248-1	0.000	4.689	0	354663	N.D.	15.283 #
22) L5 AR-1248-2	0.000	4.992f	0	218125	N.D.	6.940 #
23) L5 AR-1248-3	6.128	4.992	466945	218125	5.212	6.720 #
24) L5 AR-1248-4	6.519	5.075f	380545	268792	3.869	6.967 #
25) L5 AR-1248-5	6.552	5.500	1368947	1834420	14.241	50.325 #
26) L6 AR-1254-1	6.495	5.500	1108784	1834420	11.061	33.185 #
27) L6 AR-1254-2	6.708	5.696f	797190	1147309	5.224	23.452 #
28) L6 AR-1254-3	7.081	0.000	863372	0	5.668	N.D. #
29) L6 AR-1254-4	7.363	6.272	1095069	331177	9.948	7.295 #
30) L6 AR-1254-5	7.785	6.689	216202	403574	1.801	6.313 #
31) L7 AR-1260-1	7.240	6.175	2260659	486472	20.166	8.617 #
32) L7 AR-1260-2	7.488	6.361	3137902	342961	23.026	5.069 #
33) L7 AR-1260-3	7.860	6.517	328389	220339	3.506	3.488
34) L7 AR-1260-4	8.087	6.987	244369	97181	2.336	2.090
35) L7 AR-1260-5	8.426	7.227	506587	372190	2.568	3.453 #
36) L8 AR-1262-1	7.860	6.728f	328389	123732	2.294	4.714 #
37) L8 AR-1262-2	8.426	7.227	506587	372190	2.015	3.506 #
38) L8 AR-1262-3	8.749	7.515	816778	93047	4.516	2.268 #
39) L8 AR-1262-4	8.829	7.576	1221151	270677	14.132	3.618 #
40) L8 AR-1262-5	9.479	8.080	104369	1213734	1.089	36.184 #
41) L9 AR-1268-1	8.749	7.515	816778	93047	2.784	0.808 #

Data Path : Z:\pestpcbsrv\HPCHEM1\ECD_0\Data\P0062722\
 Data File : P0087491.D
 Signal(s) : Signal #1: ECD1A.ch Signal #2: ECD2B.ch
 Acq On : 28 Jun 2022 13:12
 Operator : YP/AJ
 Sample : N3502-05
 Misc :
 ALS Vial : 70 Sample Multiplier: 1

Instrument :
 ECD_0
 ClientSampleId :

Integration File signal 1: autoint1.e
 Integration File signal 2: autoint2.e
 Quant Time: Jun 28 15:13:44 2022
 Quant Method : Z:\pestpcbsrv\HPCHEM1\ECD_0\methods\P0062722.M
 Quant Title : GC EXTRACTABLES
 QLast Update : Tue Jun 28 02:46:21 2022
 Response via : Initial Calibration
 Integrator: ChemStation

Volume Inj. : 2 µl
 Signal #1 Phase : ZB-MR1 Signal #2 Phase: ZB-MR2
 Signal #1 Info : 30Mx0.32mmx 0.50µ Signal #2 Info : 30M x 0.32mm x 0.25µm

	Compound	RT#1	RT#2	Resp#1	Resp#2	ng/ml	ng/ml
42)	L9 AR-1268-2	8.829	7.576	1221151	270677	4.538	2.637 #
43)	L9 AR-1268-3	9.079	0.000	174785	0	0.748	N.D. #
44)	L9 AR-1268-4	9.479	8.080	104369	1213734	1.021	34.214 #
45)	L9 AR-1268-5	9.946	8.362	565404	528893	0.749	2.112 #

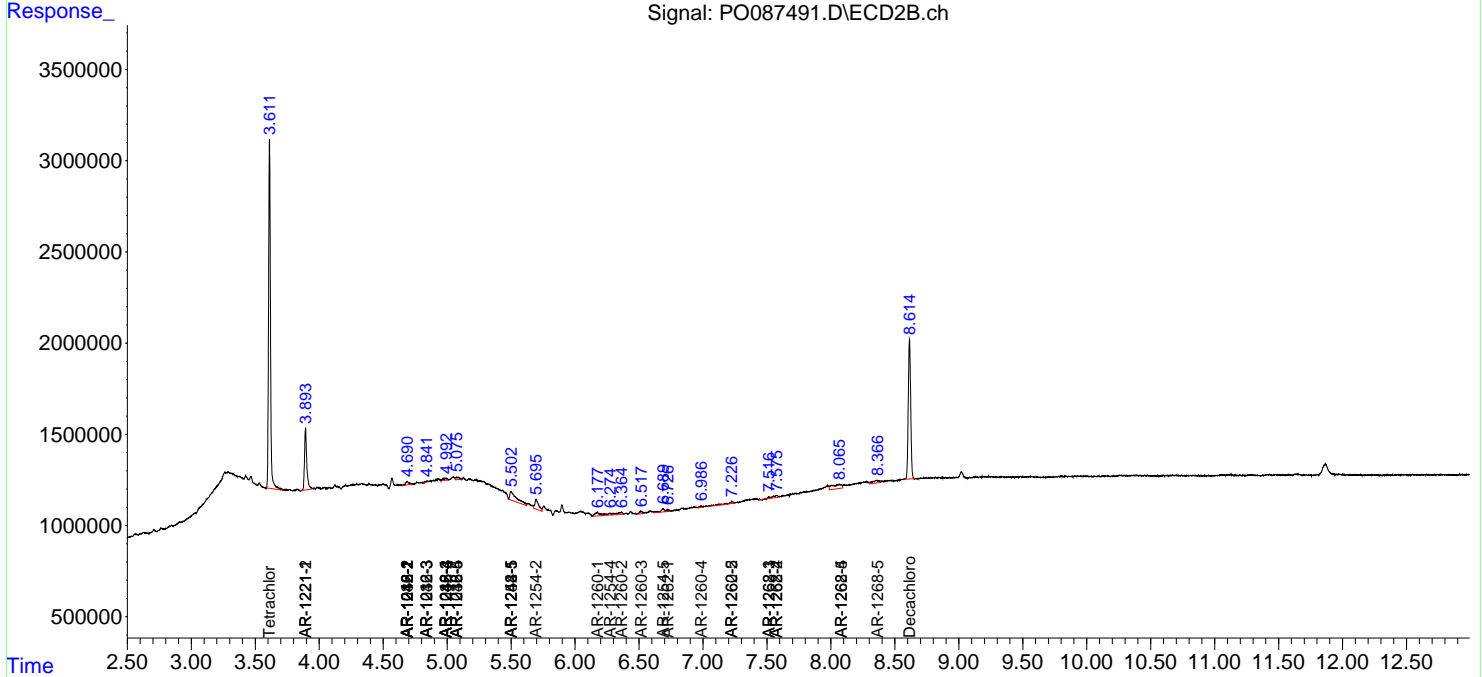
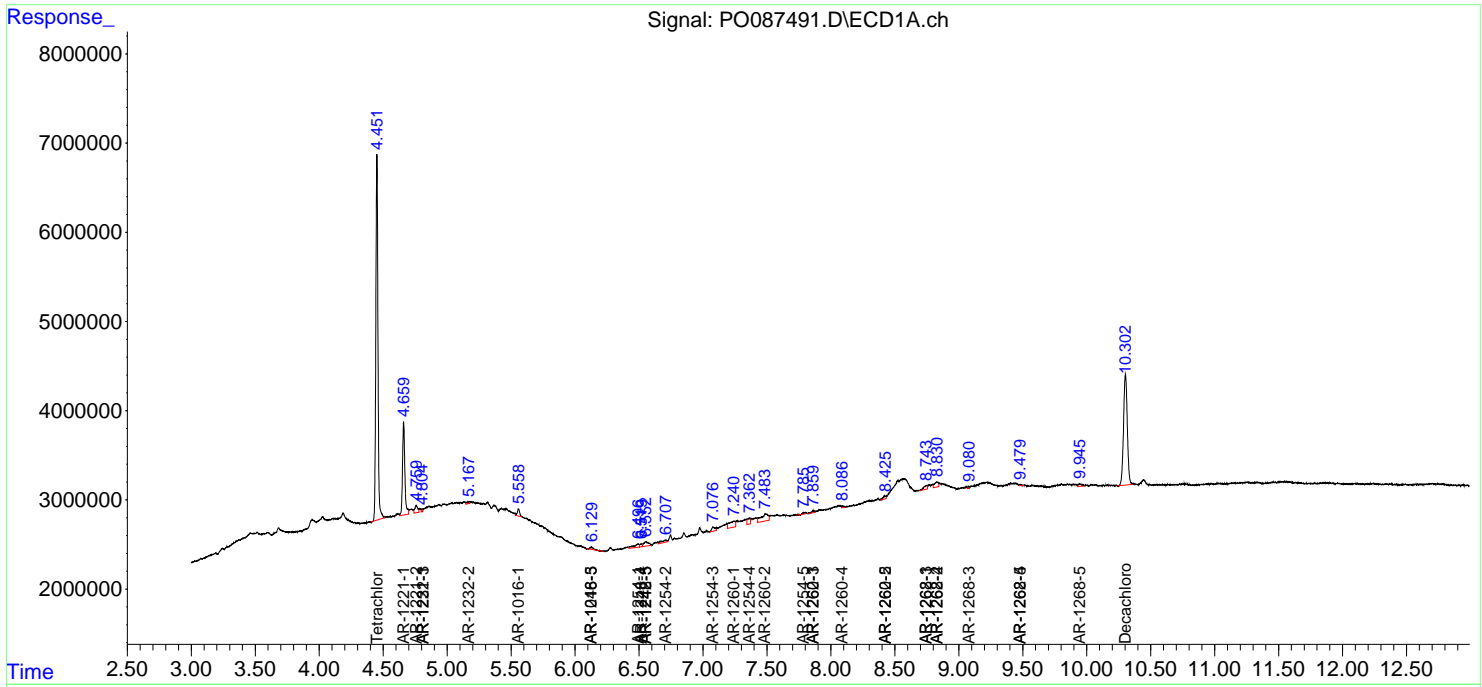
(f)=RT Delta > 1/2 Window (#)=Amounts differ by > 25% (m)=manual int.

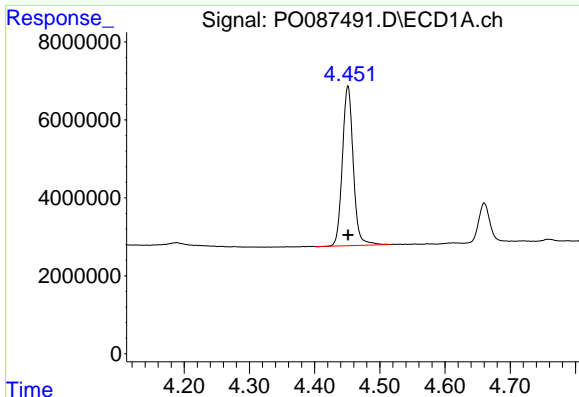
Data Path : Z:\pestpcbsrv\HPCHEM1\ECD_0\Data\PO062722\
 Data File : PO087491.D
 Signal(s) : Signal #1: ECD1A.ch Signal #2: ECD2B.ch
 Acq On : 28 Jun 2022 13:12
 Operator : YP/AJ
 Sample : N3502-05
 Misc :
 ALS Vial : 70 Sample Multiplier: 1

Instrument :
 ECD_0
 ClientSampleId :

Integration File signal 1: autoint1.e
 Integration File signal 2: autoint2.e
 Quant Time: Jun 28 15:13:44 2022
 Quant Method : Z:\pestpcbsrv\HPCHEM1\ECD_0\methods\PO062722.M
 Quant Title : GC EXTRACTABLES
 QLast Update : Tue Jun 28 02:46:21 2022
 Response via : Initial Calibration
 Integrator: ChemStation

Volume Inj. : 2 µl
 Signal #1 Phase : ZB-MR1 Signal #2 Phase: ZB-MR2
 Signal #1 Info : 30Mx0.32mmx 0.50µ Signal #2 Info : 30M x 0.32mm x 0.25µm

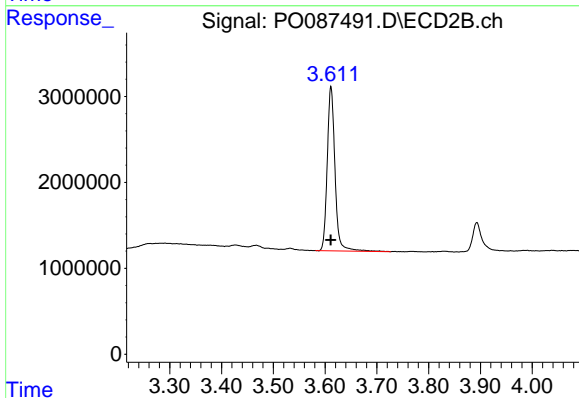




#1 Tetrachloro-m-xylene

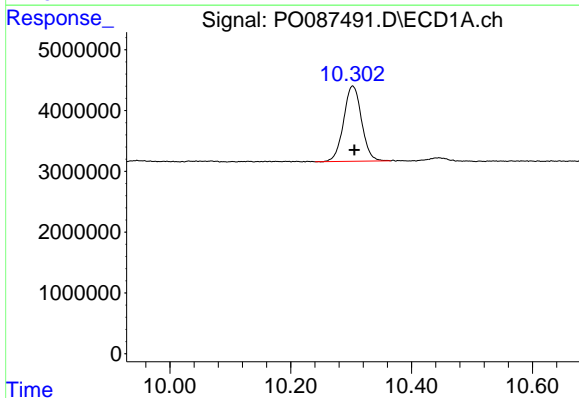
R.T.: 4.451 min
 Delta R.T.: 0.000 min
 Response: 47374408
 Conc: 18.30 ng/ml

Instrument :
 ECD_O
 ClientSampleId :



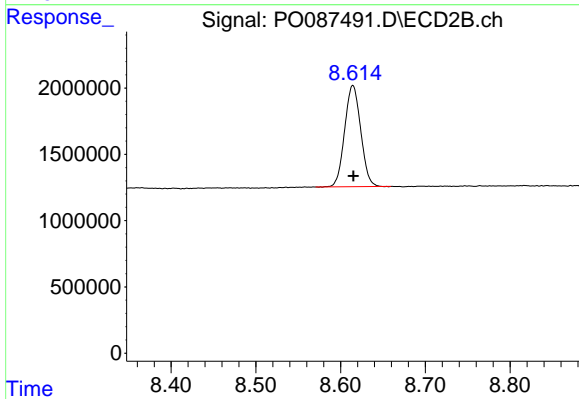
#1 Tetrachloro-m-xylene

R.T.: 3.611 min
 Delta R.T.: 0.000 min
 Response: 19897376
 Conc: 20.22 ng/ml



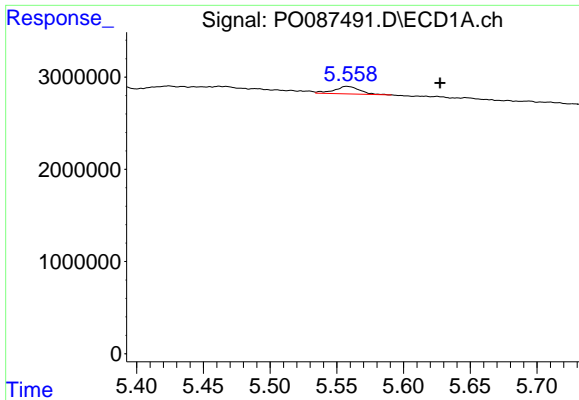
#2 Decachlorobiphenyl

R.T.: 10.302 min
 Delta R.T.: -0.003 min
 Response: 25531808
 Conc: 12.50 ng/ml



#2 Decachlorobiphenyl

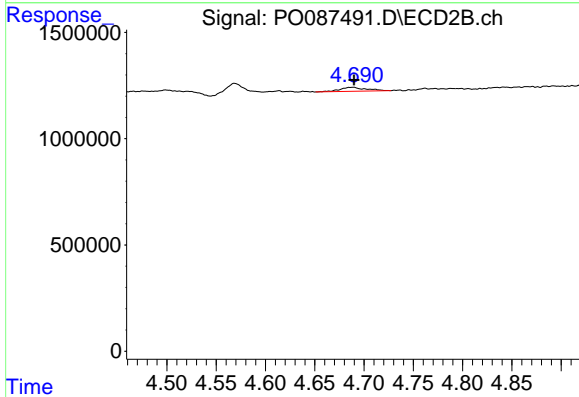
R.T.: 8.615 min
 Delta R.T.: 0.000 min
 Response: 10045214
 Conc: 12.39 ng/ml



#3 AR-1016-1

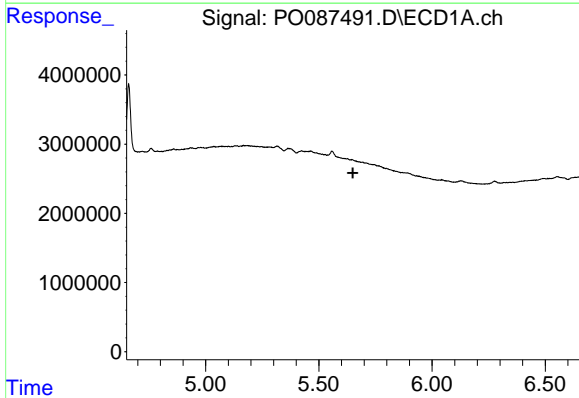
R.T.: 5.558 min
 Delta R.T.: -0.070 min
 Response: 1015289
 Conc: 11.31 ng/ml

Instrument :
 ECD_O
 ClientSampleId :



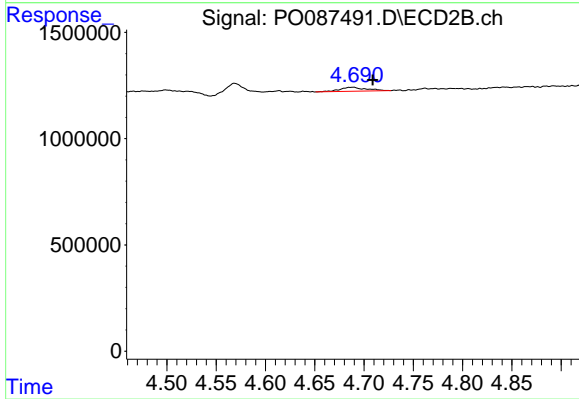
#3 AR-1016-1

R.T.: 4.689 min
 Delta R.T.: -0.001 min
 Response: 354663
 Conc: 8.87 ng/ml



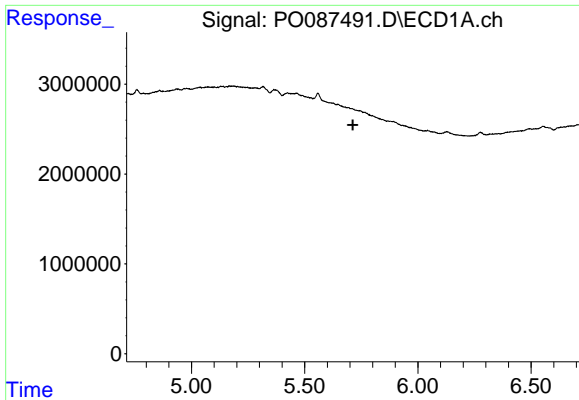
#4 AR-1016-2

R.T.: 0.000 min
 Exp R.T. : 5.650 min
 Response: 0
 Conc: N.D.



#4 AR-1016-2

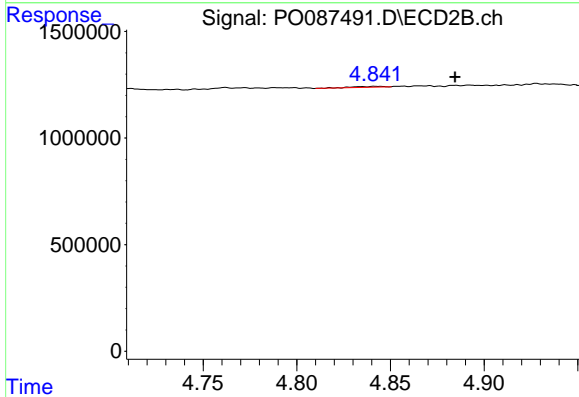
R.T.: 4.689 min
 Delta R.T.: -0.020 min
 Response: 354663
 Conc: 6.36 ng/ml



#5 AR-1016-3

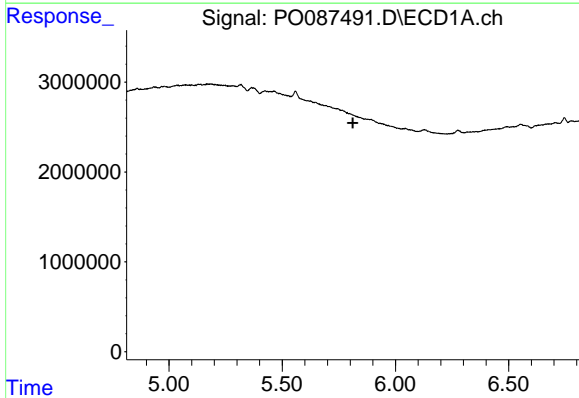
R.T.: 0.000 min
 Exp R.T.: 5.713 min
 Response: 0
 Conc: N.D.

Instrument :
 ECD_O
 ClientSampleId :



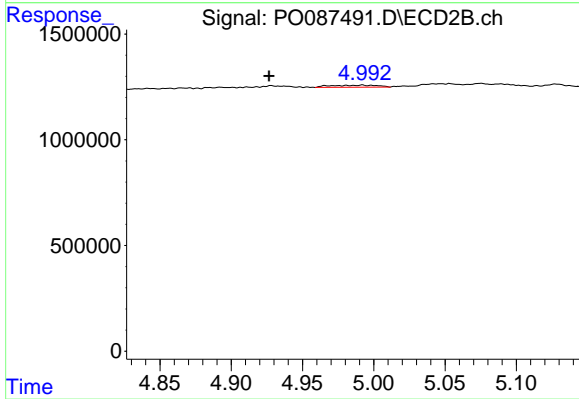
#5 AR-1016-3

R.T.: 4.842 min
 Delta R.T.: -0.042 min
 Response: 56580
 Conc: 1.92 ng/ml



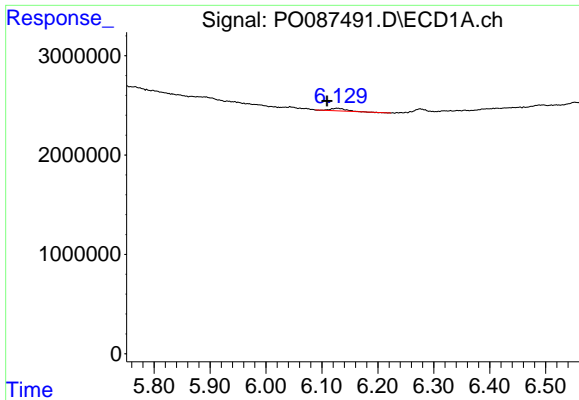
#6 AR-1016-4

R.T.: 0.000 min
 Exp R.T.: 5.812 min
 Response: 0
 Conc: N.D.



#6 AR-1016-4

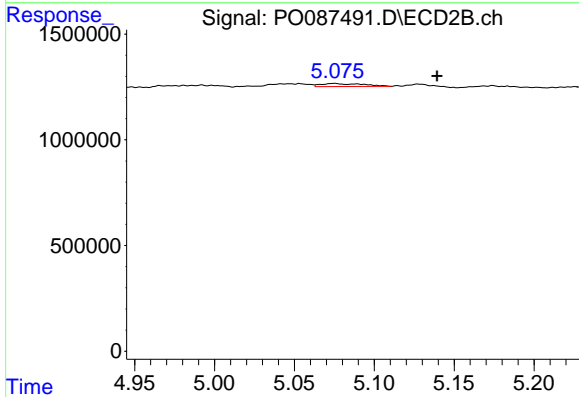
R.T.: 4.992 min
 Delta R.T.: 0.066 min
 Response: 218125
 Conc: 9.08 ng/ml



#7 AR-1016-5

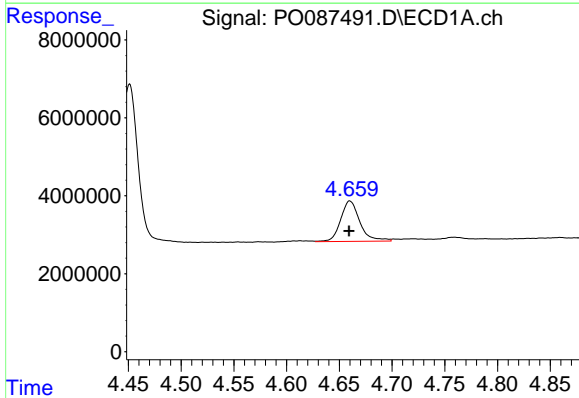
R.T.: 6.128 min
 Delta R.T.: 0.019 min
 Response: 466945
 Conc: 7.79 ng/ml

Instrument :
 ECD_O
 ClientSampleId :



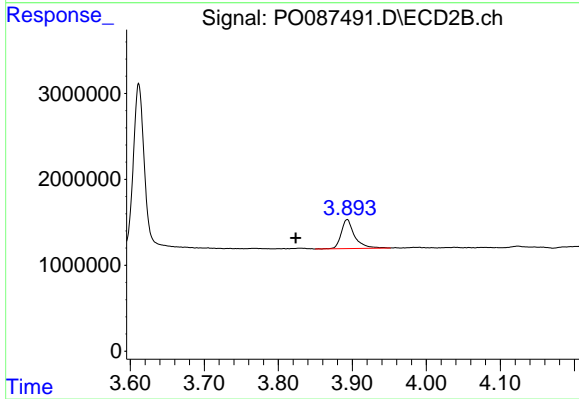
#7 AR-1016-5

R.T.: 5.075 min
 Delta R.T.: -0.064 min
 Response: 268792
 Conc: 8.79 ng/ml



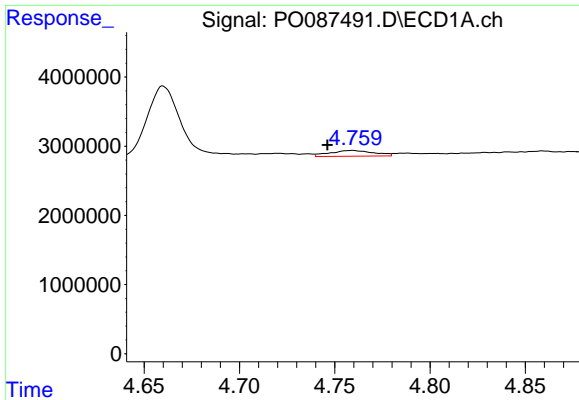
#8 AR-1221-1

R.T.: 4.660 min
 Delta R.T.: 0.000 min
 Response: 13200227
 Conc: 429.13 ng/ml



#8 AR-1221-1

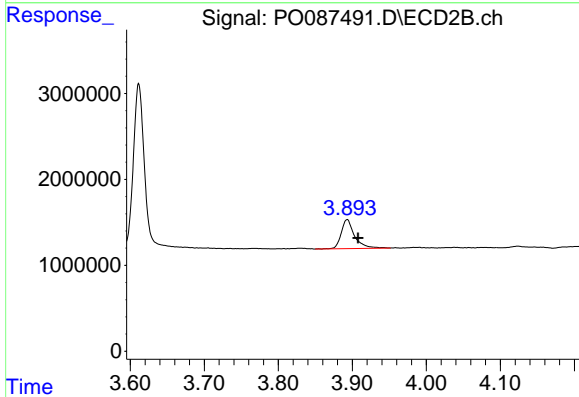
R.T.: 3.893 min
 Delta R.T.: 0.070 min
 Response: 4212682
 Conc: 358.72 ng/ml



#9 AR-1221-2

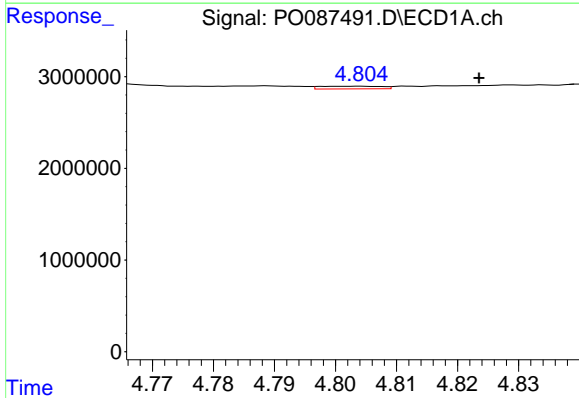
R.T.: 4.759 min
 Delta R.T.: 0.013 min
 Response: 1337910
 Conc: 59.02 ng/ml

Instrument :
 ECD_O
 ClientSampleId :



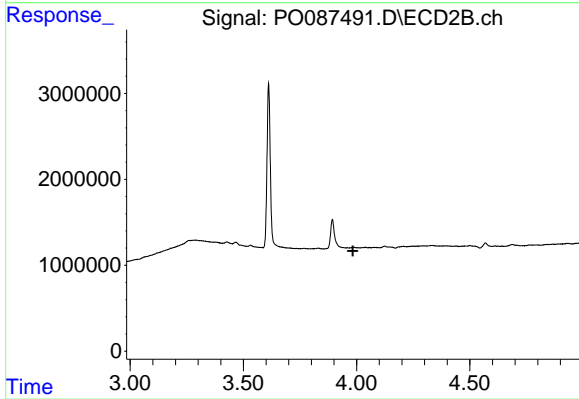
#9 AR-1221-2

R.T.: 3.893 min
 Delta R.T.: -0.015 min
 Response: 4212682
 Conc: 473.83 ng/ml



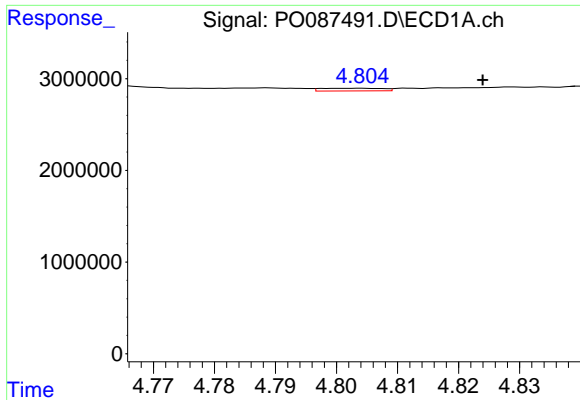
#10 AR-1221-3

R.T.: 4.803 min
 Delta R.T.: -0.020 min
 Response: 209679
 Conc: 3.00 ng/ml



#10 AR-1221-3

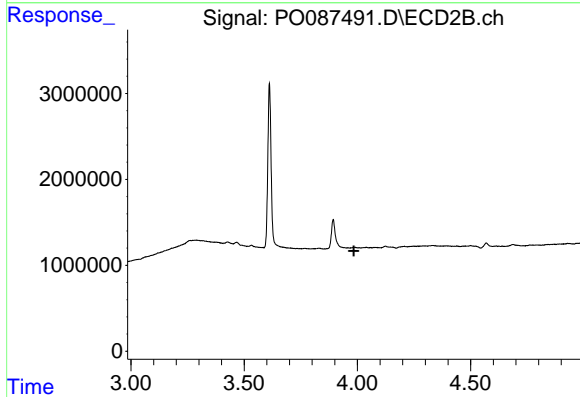
R.T.: 0.000 min
 Exp R.T. : 3.984 min
 Response: 0
 Conc: N.D.



#11 AR-1232-1

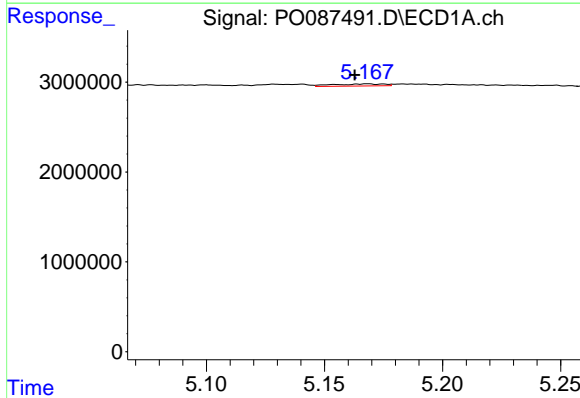
R.T.: 4.803 min
 Delta R.T.: -0.021 min
 Response: 209679
 Conc: 3.20 ng/ml

Instrument :
 ECD_O
 ClientSampleId :



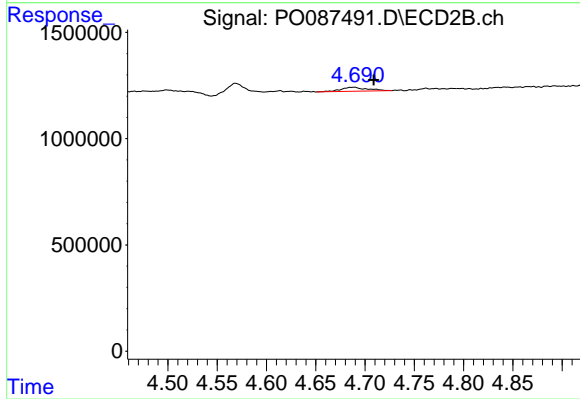
#11 AR-1232-1

R.T.: 0.000 min
 Exp R.T. : 3.984 min
 Response: 0
 Conc: N.D.



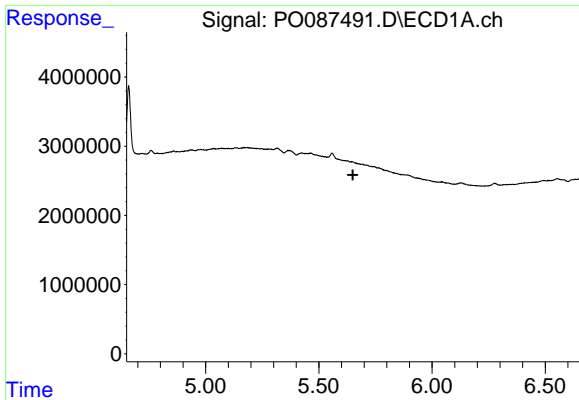
#12 AR-1232-2

R.T.: 5.168 min
 Delta R.T.: 0.006 min
 Response: 355058
 Conc: 11.00 ng/ml



#12 AR-1232-2

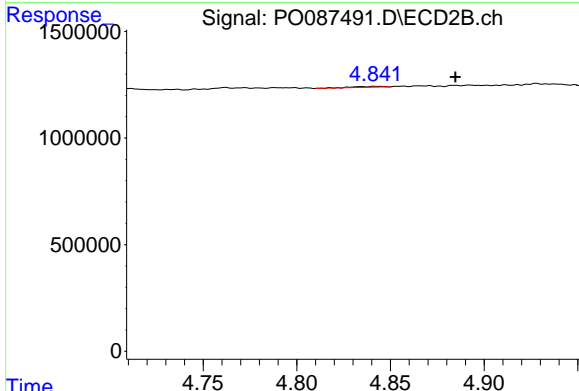
R.T.: 4.689 min
 Delta R.T.: -0.020 min
 Response: 354663
 Conc: 14.54 ng/ml



#13 AR-1232-3

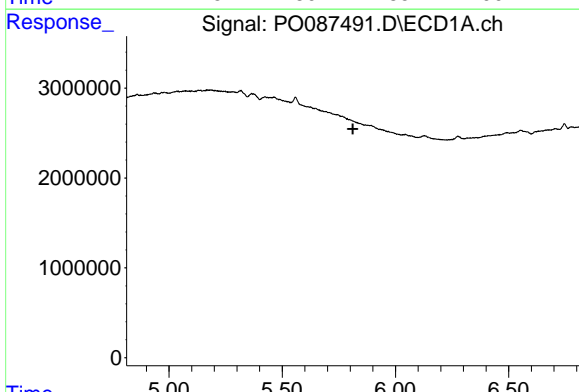
R.T.: 0.000 min
 Exp R.T.: 5.650 min
 Response: 0
 Conc: N.D.

Instrument :
 ECD_O
 ClientSampleId :



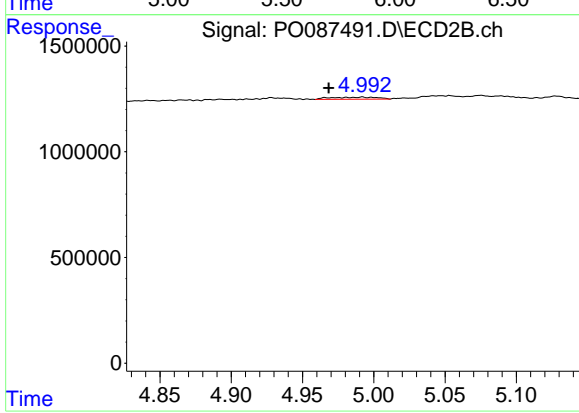
#13 AR-1232-3

R.T.: 4.842 min
 Delta R.T.: -0.043 min
 Response: 56580
 Conc: 4.56 ng/ml



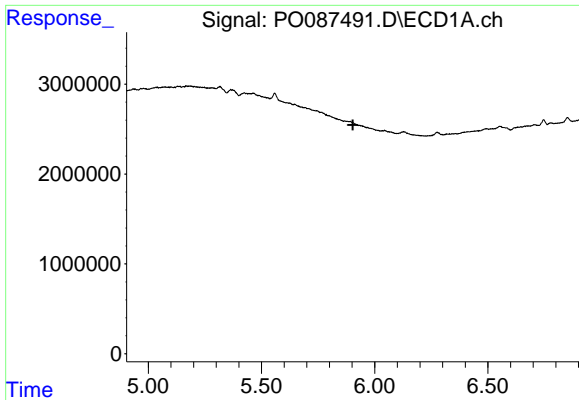
#14 AR-1232-4

R.T.: 0.000 min
 Exp R.T.: 5.812 min
 Response: 0
 Conc: N.D.



#14 AR-1232-4

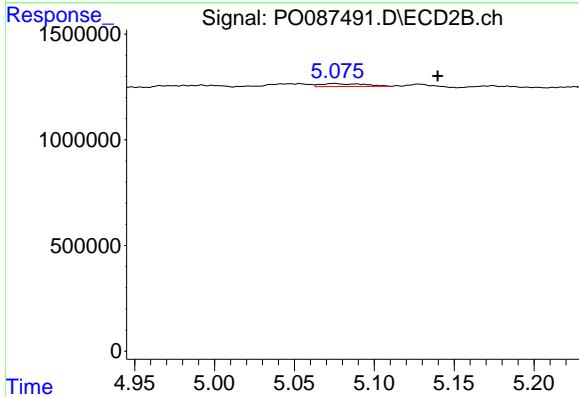
R.T.: 4.992 min
 Delta R.T.: 0.024 min
 Response: 218125
 Conc: 19.24 ng/ml



#15 AR-1232-5

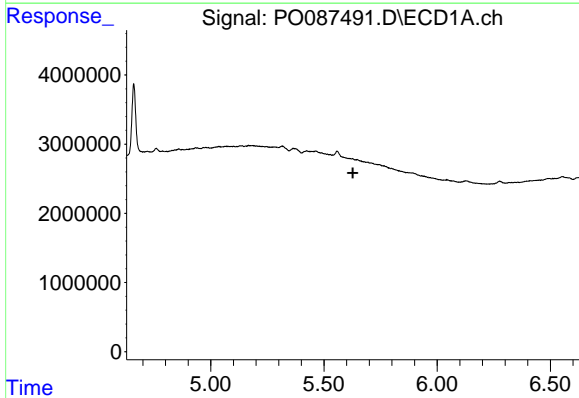
R.T.: 0.000 min
 Exp R.T.: 5.904 min
 Response: 0
 Conc: N.D.

Instrument :
 ECD_O
 ClientSampleId :



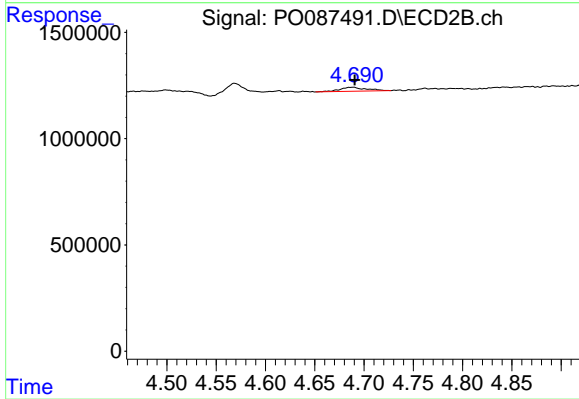
#15 AR-1232-5

R.T.: 5.075 min
 Delta R.T.: -0.065 min
 Response: 268792
 Conc: 21.42 ng/ml



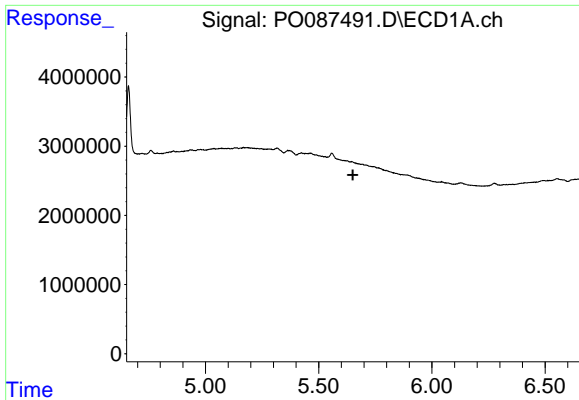
#16 AR-1242-1

R.T.: 0.000 min
 Exp R.T.: 5.628 min
 Response: 0
 Conc: N.D.



#16 AR-1242-1

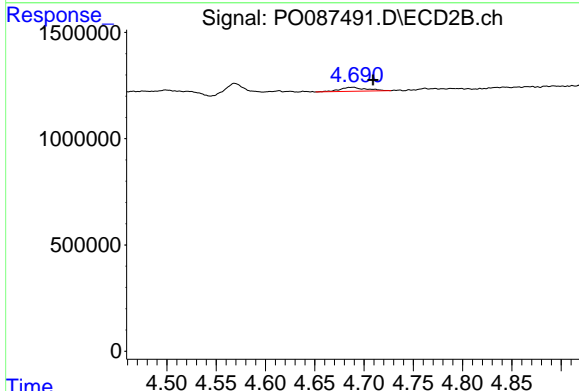
R.T.: 4.689 min
 Delta R.T.: -0.002 min
 Response: 354663
 Conc: 12.43 ng/ml



#17 AR-1242-2

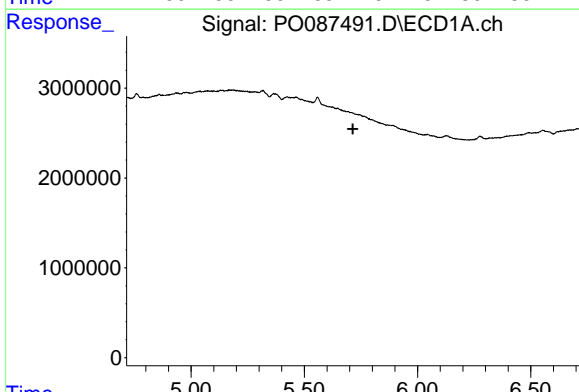
R.T.: 0.000 min
 Exp R.T.: 5.651 min
 Response: 0
 Conc: N.D.

Instrument :
 ECD_O
 ClientSampleId :



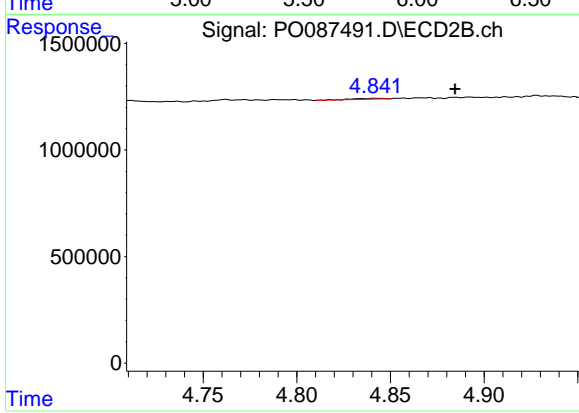
#17 AR-1242-2

R.T.: 4.689 min
 Delta R.T.: -0.020 min
 Response: 354663
 Conc: 9.09 ng/ml



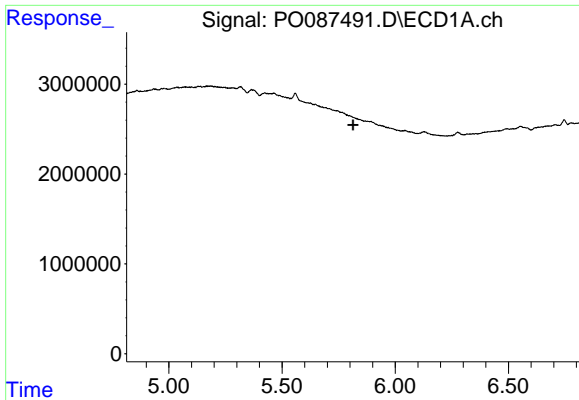
#18 AR-1242-3

R.T.: 0.000 min
 Exp R.T.: 5.714 min
 Response: 0
 Conc: N.D.



#18 AR-1242-3

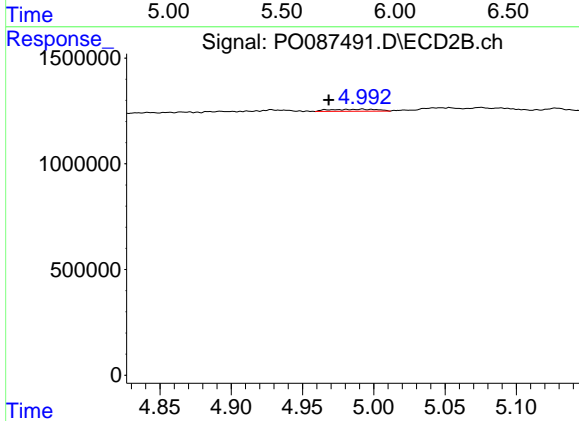
R.T.: 4.842 min
 Delta R.T.: -0.042 min
 Response: 56580
 Conc: 2.71 ng/ml



#19 AR-1242-4

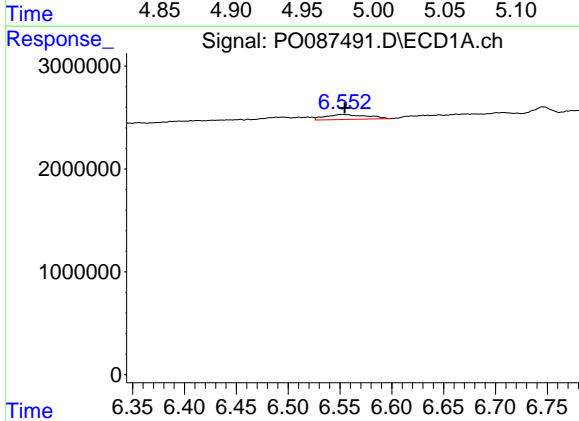
R.T.: 0.000 min
 Exp R.T.: 5.813 min
 Response: 0
 Conc: N.D.

Instrument :
 ECD_O
 ClientSampleId :



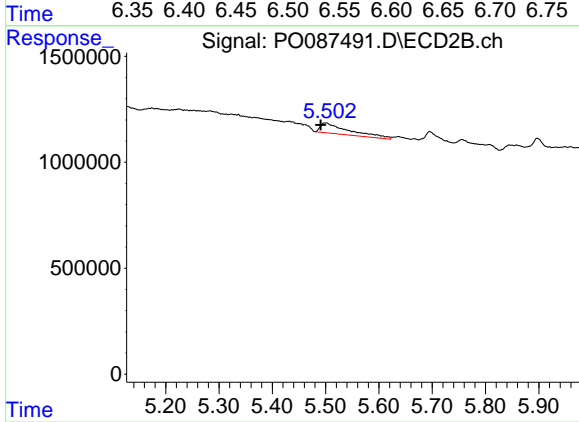
#19 AR-1242-4

R.T.: 4.992 min
 Delta R.T.: 0.024 min
 Response: 218125
 Conc: 10.32 ng/ml



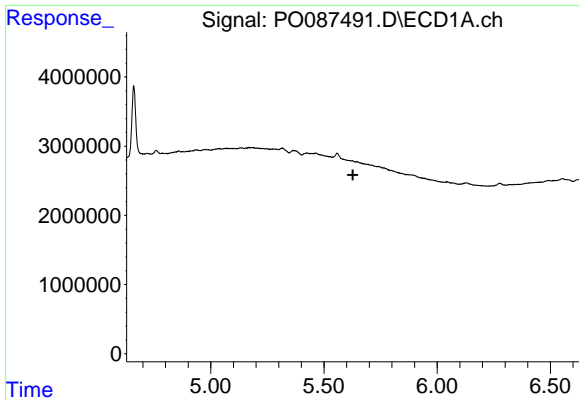
#20 AR-1242-5

R.T.: 6.552 min
 Delta R.T.: -0.003 min
 Response: 1368947
 Conc: 25.78 ng/ml



#20 AR-1242-5

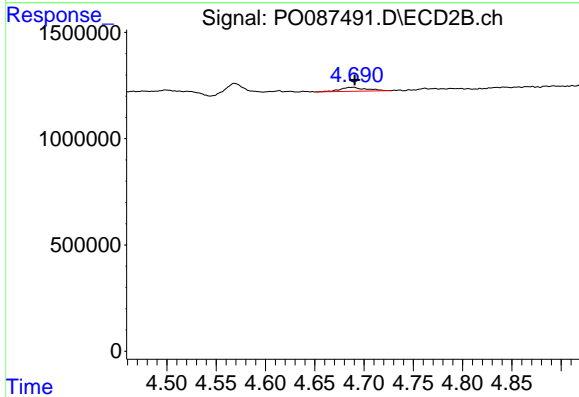
R.T.: 5.500 min
 Delta R.T.: 0.009 min
 Response: 1834420
 Conc: 70.18 ng/ml



#21 AR-1248-1

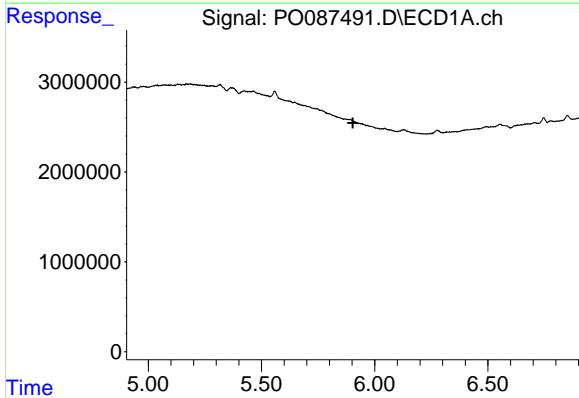
R.T.: 0.000 min
 Exp R.T.: 5.628 min
 Response: 0
 Conc: N.D.

Instrument :
 ECD_O
 ClientSampleId :



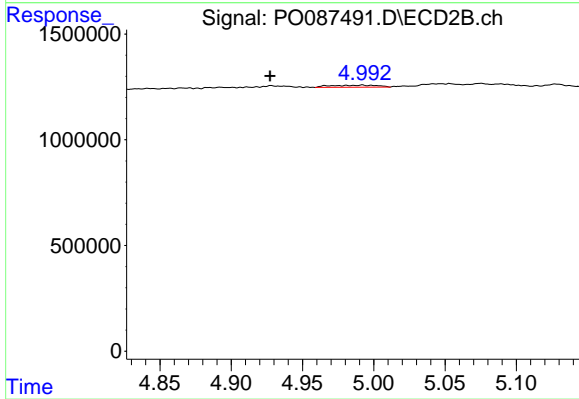
#21 AR-1248-1

R.T.: 4.689 min
 Delta R.T.: -0.002 min
 Response: 354663
 Conc: 15.28 ng/ml



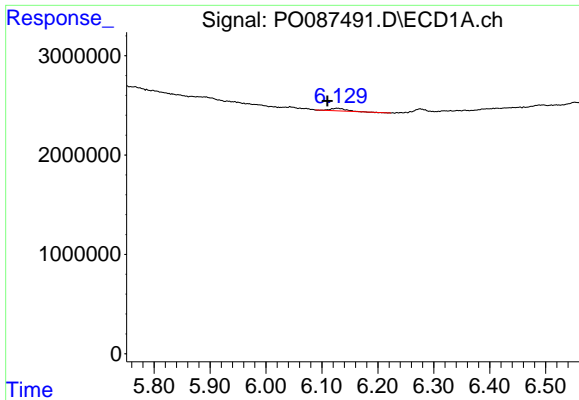
#22 AR-1248-2

R.T.: 0.000 min
 Exp R.T.: 5.904 min
 Response: 0
 Conc: N.D.



#22 AR-1248-2

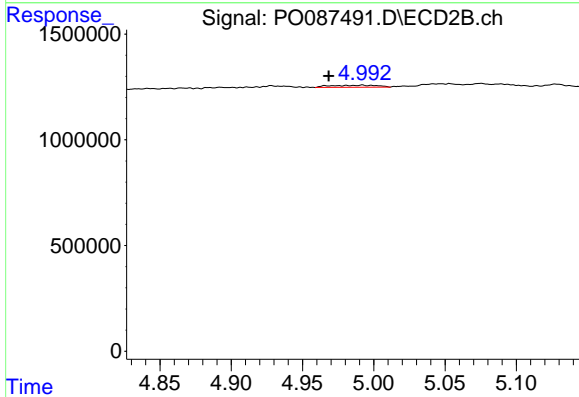
R.T.: 4.992 min
 Delta R.T.: 0.065 min
 Response: 218125
 Conc: 6.94 ng/ml



#23 AR-1248-3

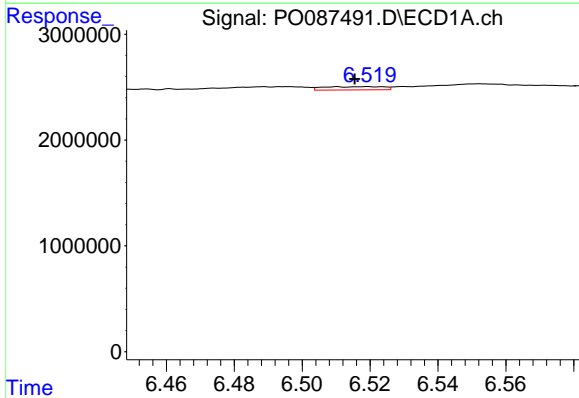
R.T.: 6.128 min
 Delta R.T.: 0.018 min
 Response: 466945
 Conc: 5.21 ng/ml

Instrument :
 ECD_O
 ClientSampleId :



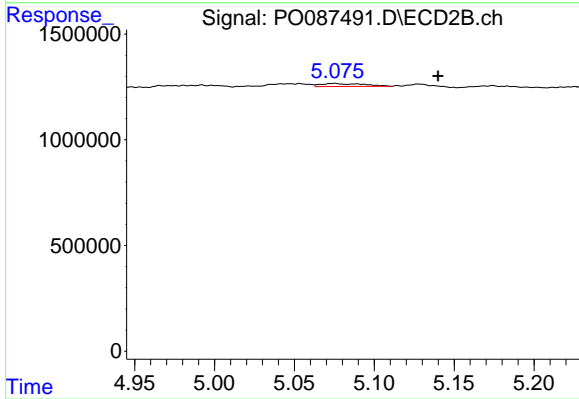
#23 AR-1248-3

R.T.: 4.992 min
 Delta R.T.: 0.024 min
 Response: 218125
 Conc: 6.72 ng/ml



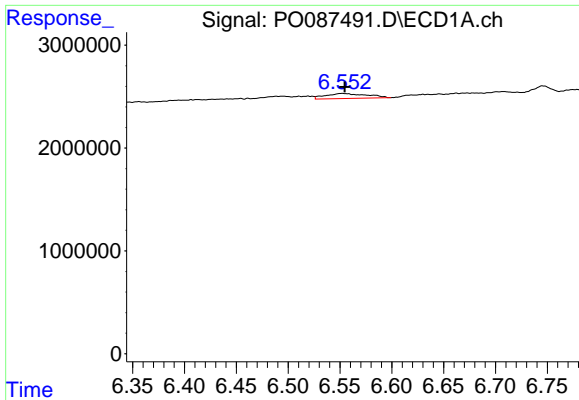
#24 AR-1248-4

R.T.: 6.519 min
 Delta R.T.: 0.004 min
 Response: 380545
 Conc: 3.87 ng/ml



#24 AR-1248-4

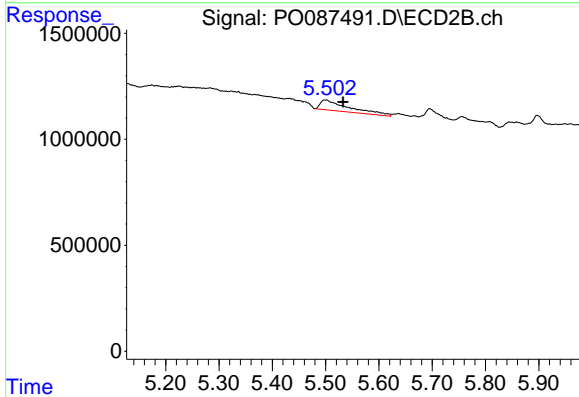
R.T.: 5.075 min
 Delta R.T.: -0.065 min
 Response: 268792
 Conc: 6.97 ng/ml



#25 AR-1248-5

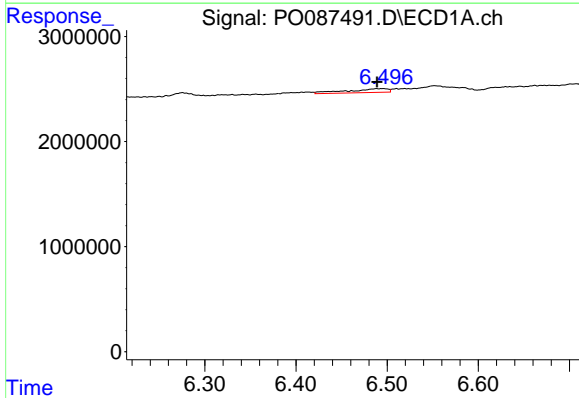
R.T.: 6.552 min
 Delta R.T.: -0.003 min
 Response: 1368947
 Conc: 14.24 ng/ml

Instrument :
 ECD_O
 ClientSampleId :



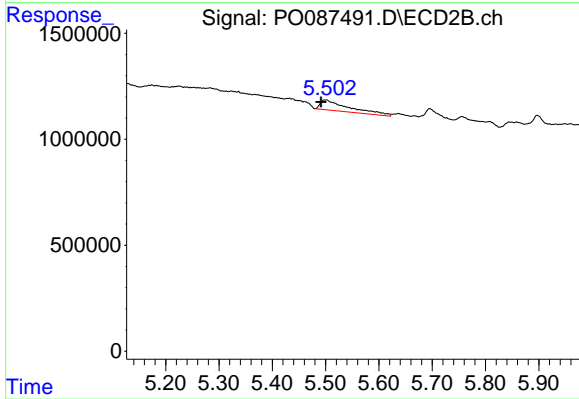
#25 AR-1248-5

R.T.: 5.500 min
 Delta R.T.: -0.033 min
 Response: 1834420
 Conc: 50.32 ng/ml



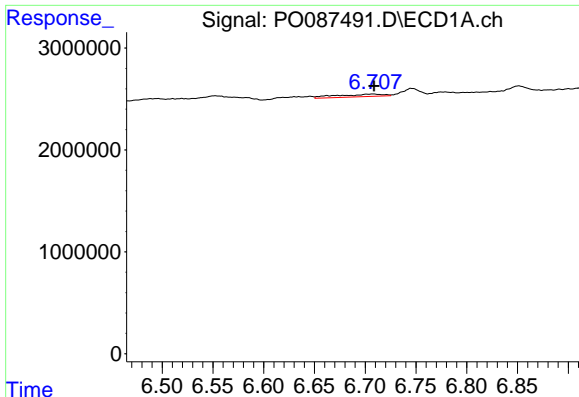
#26 AR-1254-1

R.T.: 6.495 min
 Delta R.T.: 0.006 min
 Response: 1108784
 Conc: 11.06 ng/ml



#26 AR-1254-1

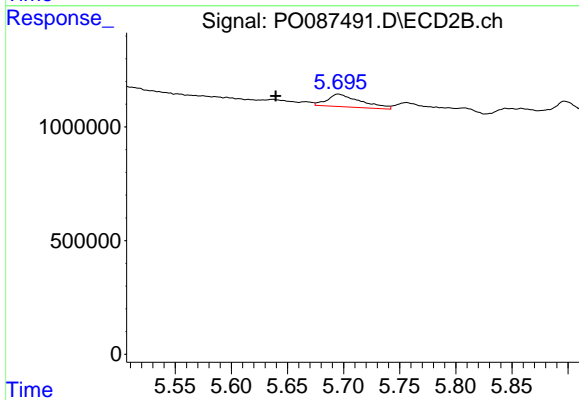
R.T.: 5.500 min
 Delta R.T.: 0.008 min
 Response: 1834420
 Conc: 33.18 ng/ml



#27 AR-1254-2

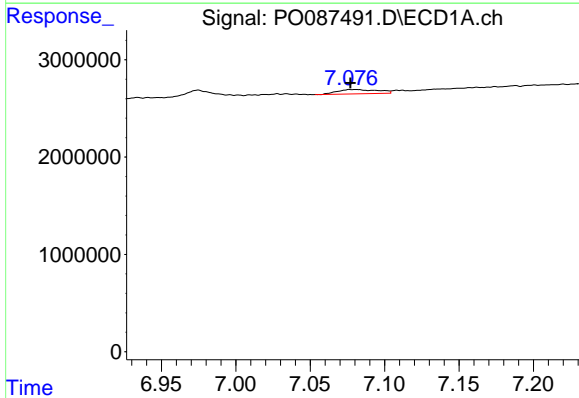
R.T.: 6.708 min
 Delta R.T.: 0.000 min
 Response: 797190
 Conc: 5.22 ng/ml

Instrument :
 ECD_O
 ClientSampleId :



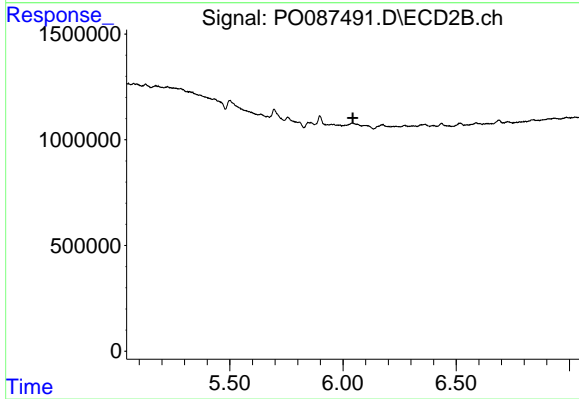
#27 AR-1254-2

R.T.: 5.696 min
 Delta R.T.: 0.056 min
 Response: 1147309
 Conc: 23.45 ng/ml



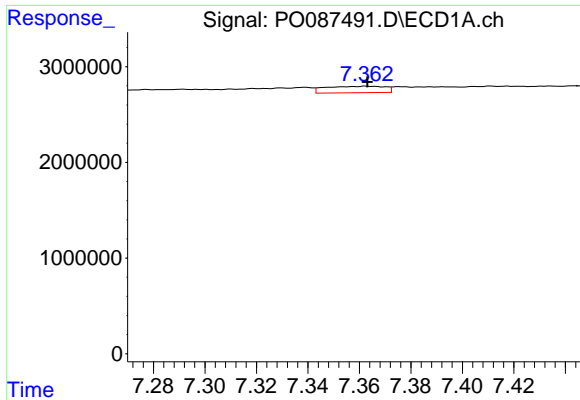
#28 AR-1254-3

R.T.: 7.081 min
 Delta R.T.: 0.004 min
 Response: 863372
 Conc: 5.67 ng/ml



#28 AR-1254-3

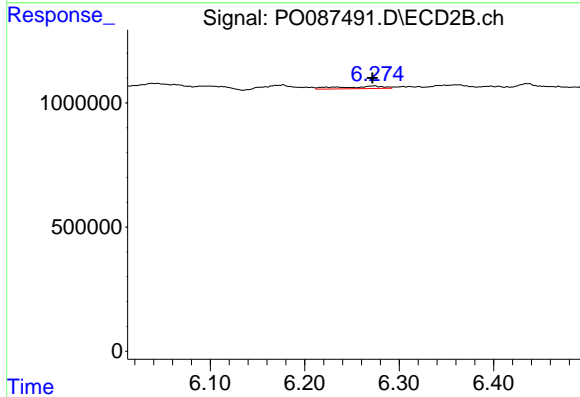
R.T.: 0.000 min
 Exp R.T. : 6.043 min
 Response: 0
 Conc: N.D.



#29 AR-1254-4

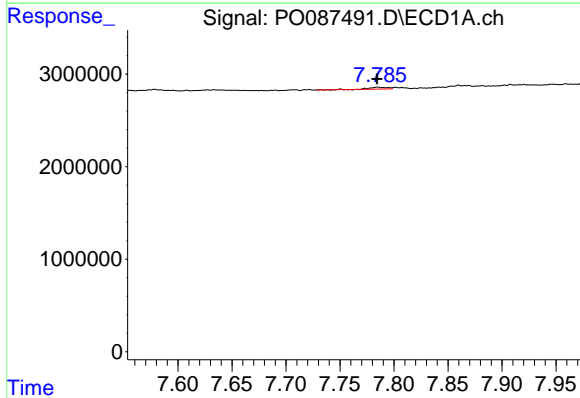
R.T.: 7.363 min
 Delta R.T.: 0.000 min
 Response: 1095069
 Conc: 9.95 ng/ml

Instrument :
 ECD_O
 ClientSampleId :



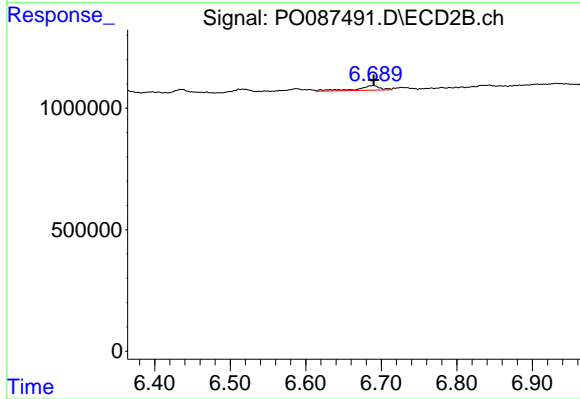
#29 AR-1254-4

R.T.: 6.272 min
 Delta R.T.: 0.000 min
 Response: 331177
 Conc: 7.29 ng/ml



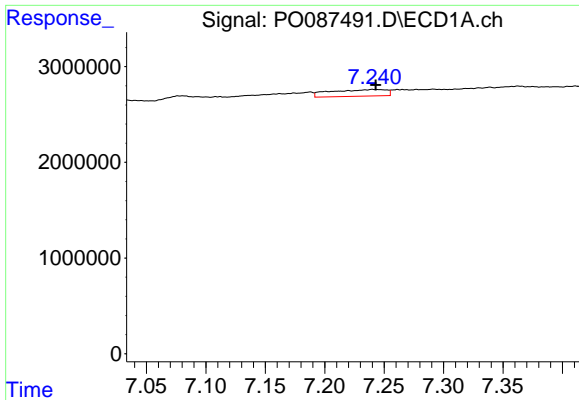
#30 AR-1254-5

R.T.: 7.785 min
 Delta R.T.: 0.000 min
 Response: 216202
 Conc: 1.80 ng/ml



#30 AR-1254-5

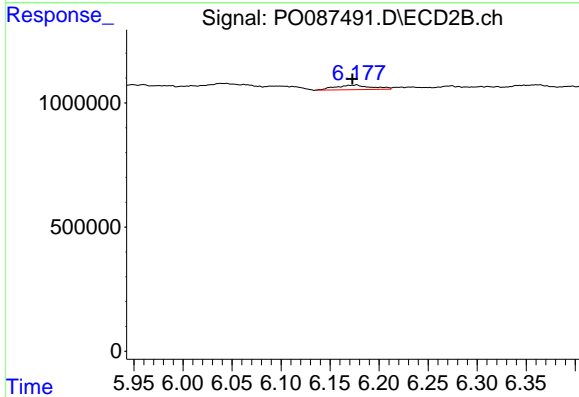
R.T.: 6.689 min
 Delta R.T.: -0.001 min
 Response: 403574
 Conc: 6.31 ng/ml



#31 AR-1260-1

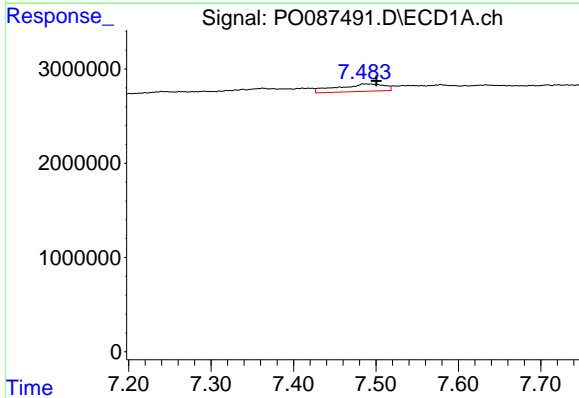
R.T.: 7.240 min
 Delta R.T.: -0.003 min
 Response: 2260659
 Conc: 20.17 ng/ml

Instrument :
 ECD_O
 ClientSampleId :



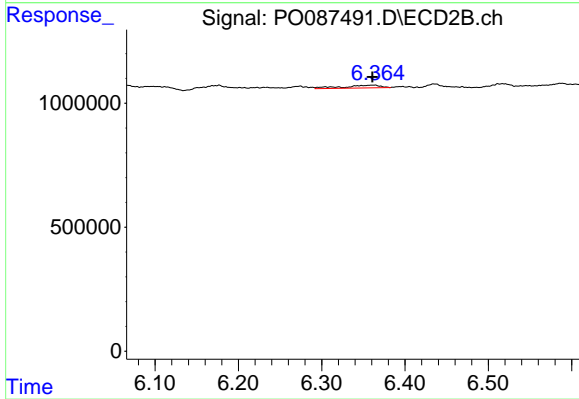
#31 AR-1260-1

R.T.: 6.175 min
 Delta R.T.: 0.002 min
 Response: 486472
 Conc: 8.62 ng/ml



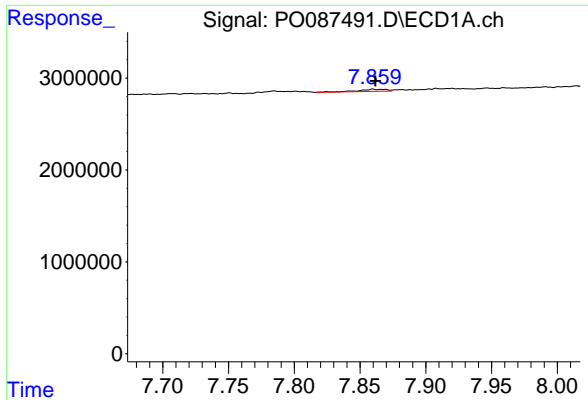
#32 AR-1260-2

R.T.: 7.488 min
 Delta R.T.: -0.012 min
 Response: 3137902
 Conc: 23.03 ng/ml



#32 AR-1260-2

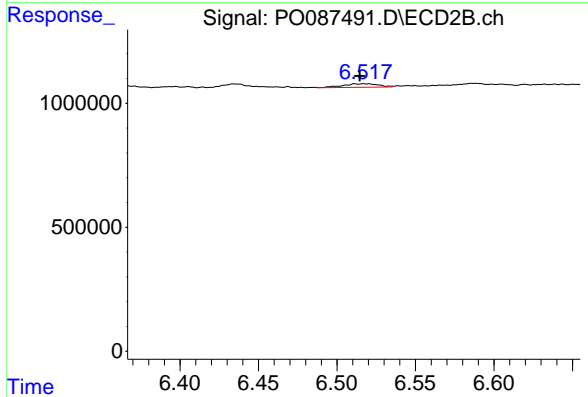
R.T.: 6.361 min
 Delta R.T.: 0.000 min
 Response: 342961
 Conc: 5.07 ng/ml



#33 AR-1260-3

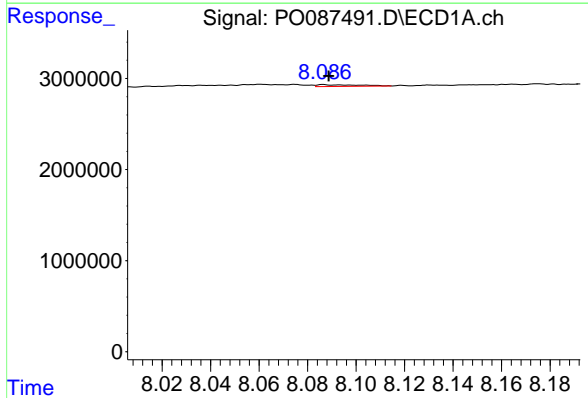
R.T.: 7.860 min
 Delta R.T.: -0.002 min
 Response: 328389
 Conc: 3.51 ng/ml

Instrument :
 ECD_O
 ClientSampleId :



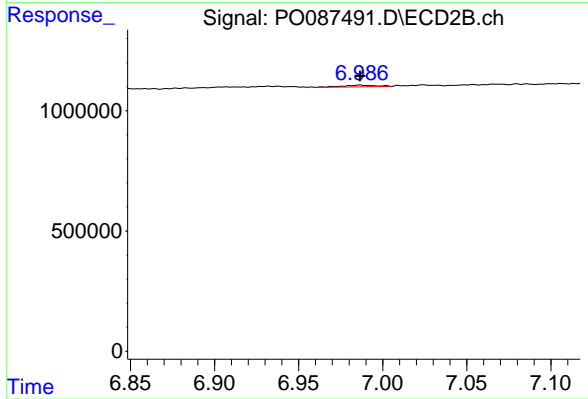
#33 AR-1260-3

R.T.: 6.517 min
 Delta R.T.: 0.002 min
 Response: 220339
 Conc: 3.49 ng/ml



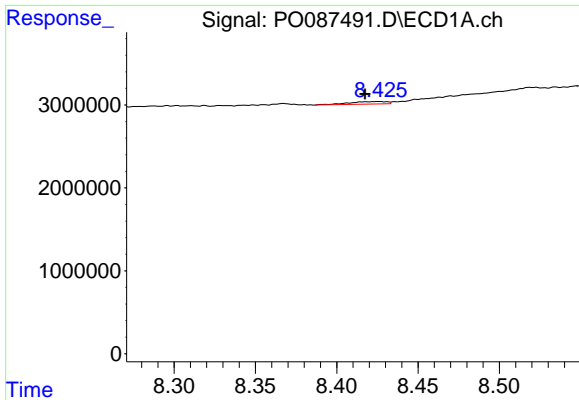
#34 AR-1260-4

R.T.: 8.087 min
 Delta R.T.: -0.002 min
 Response: 244369
 Conc: 2.34 ng/ml



#34 AR-1260-4

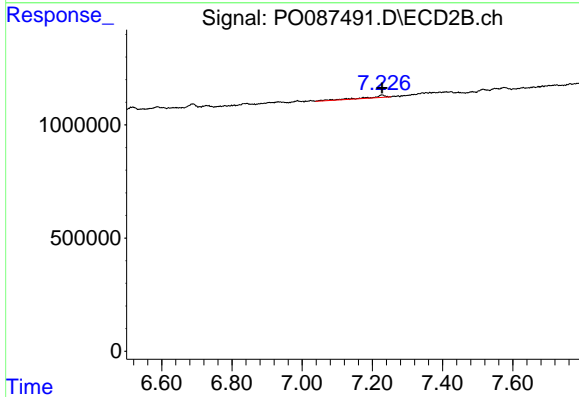
R.T.: 6.987 min
 Delta R.T.: 0.000 min
 Response: 97181
 Conc: 2.09 ng/ml



#35 AR-1260-5

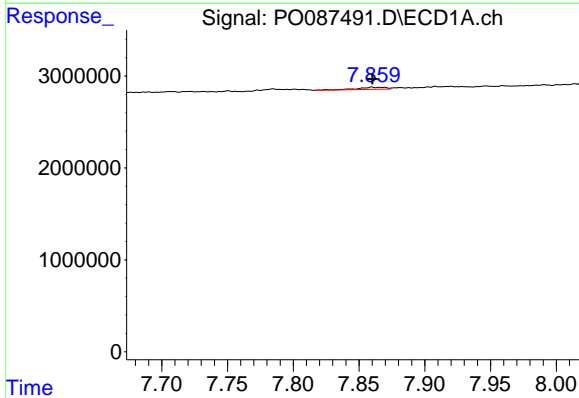
R.T.: 8.426 min
 Delta R.T.: 0.008 min
 Response: 506587
 Conc: 2.57 ng/ml

Instrument :
 ECD_O
 ClientSampleId :



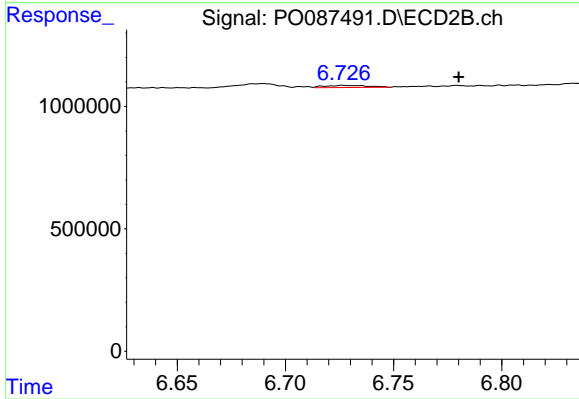
#35 AR-1260-5

R.T.: 7.227 min
 Delta R.T.: 0.000 min
 Response: 372190
 Conc: 3.45 ng/ml



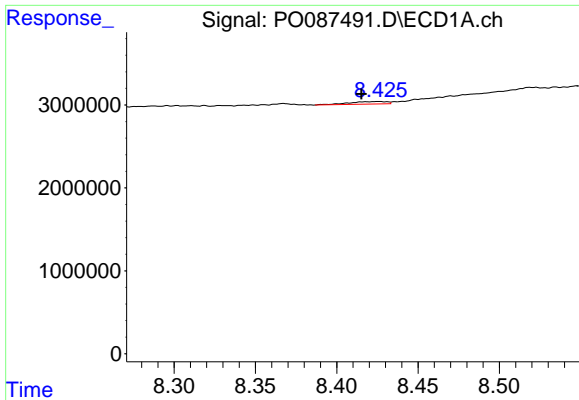
#36 AR-1262-1

R.T.: 7.860 min
 Delta R.T.: 0.000 min
 Response: 328389
 Conc: 2.29 ng/ml



#36 AR-1262-1

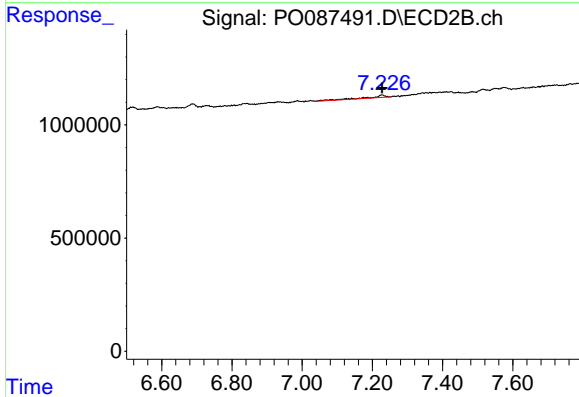
R.T.: 6.728 min
 Delta R.T.: -0.052 min
 Response: 123732
 Conc: 4.71 ng/ml



#37 AR-1262-2

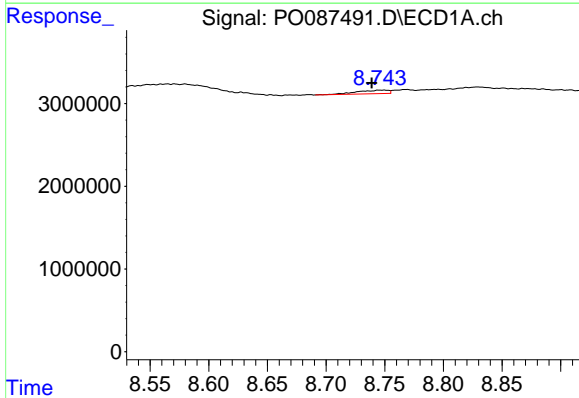
R.T.: 8.426 min
 Delta R.T.: 0.010 min
 Response: 506587
 Conc: 2.02 ng/ml

Instrument :
 ECD_O
 ClientSampleId :



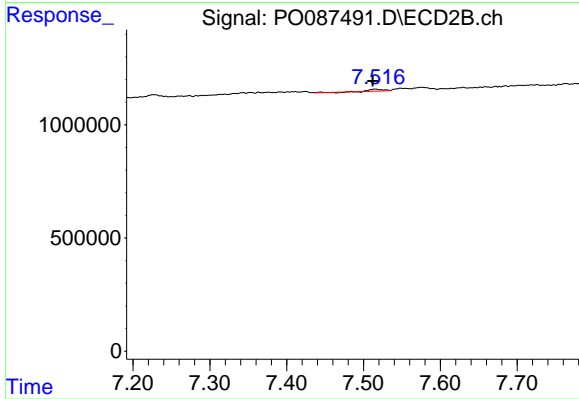
#37 AR-1262-2

R.T.: 7.227 min
 Delta R.T.: 0.000 min
 Response: 372190
 Conc: 3.51 ng/ml



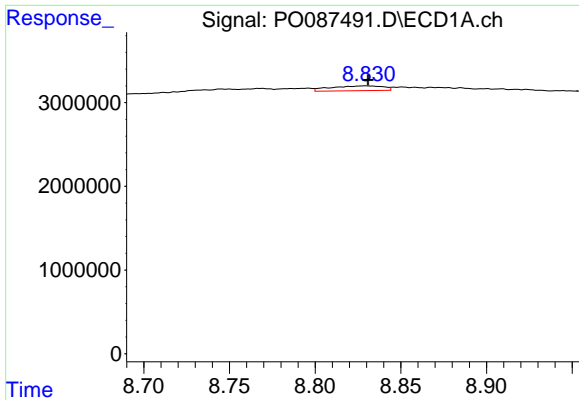
#38 AR-1262-3

R.T.: 8.749 min
 Delta R.T.: 0.010 min
 Response: 816778
 Conc: 4.52 ng/ml



#38 AR-1262-3

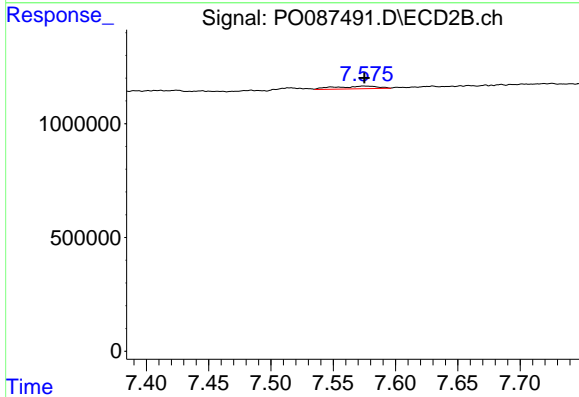
R.T.: 7.515 min
 Delta R.T.: 0.003 min
 Response: 93047
 Conc: 2.27 ng/ml



#39 AR-1262-4

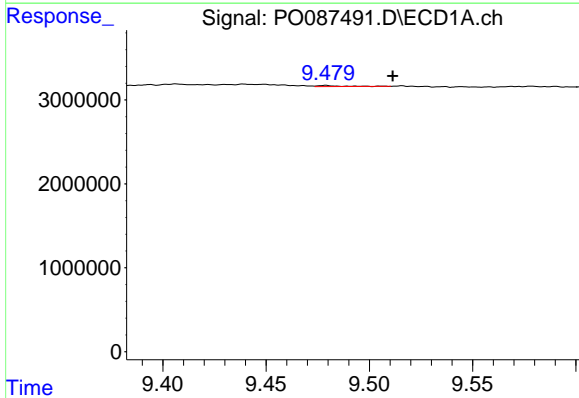
R.T.: 8.829 min
 Delta R.T.: -0.002 min
 Response: 1221151
 Conc: 14.13 ng/ml

Instrument :
 ECD_O
 ClientSampleId :



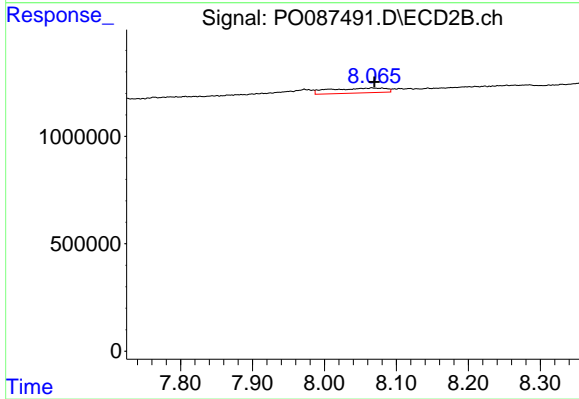
#39 AR-1262-4

R.T.: 7.576 min
 Delta R.T.: 0.000 min
 Response: 270677
 Conc: 3.62 ng/ml



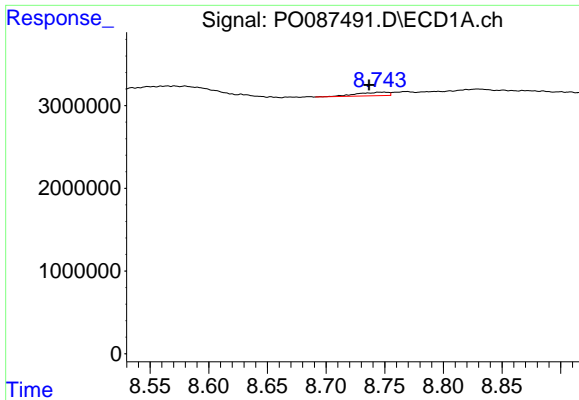
#40 AR-1262-5

R.T.: 9.479 min
 Delta R.T.: -0.033 min
 Response: 104369
 Conc: 1.09 ng/ml



#40 AR-1262-5

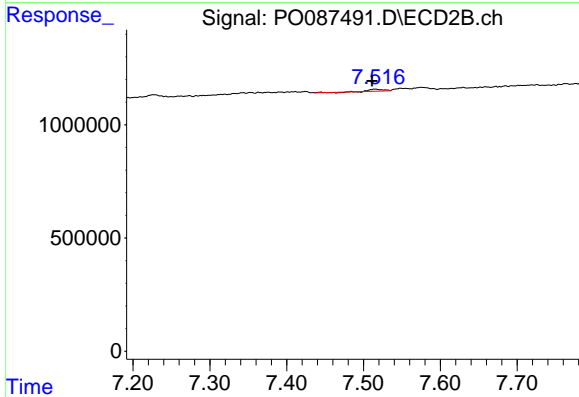
R.T.: 8.080 min
 Delta R.T.: 0.010 min
 Response: 1213734
 Conc: 36.18 ng/ml



#41 AR-1268-1

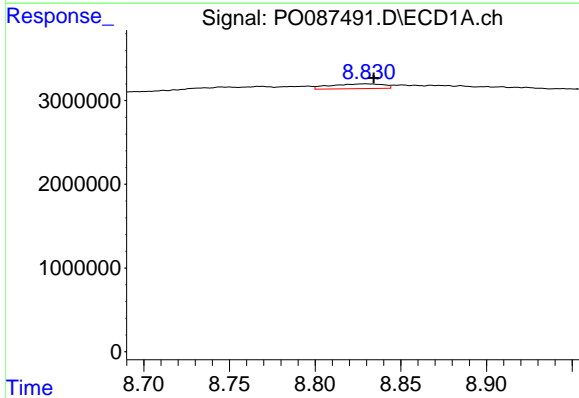
R.T.: 8.749 min
 Delta R.T.: 0.012 min
 Response: 816778
 Conc: 2.78 ng/ml

Instrument :
 ECD_O
 ClientSampleId :



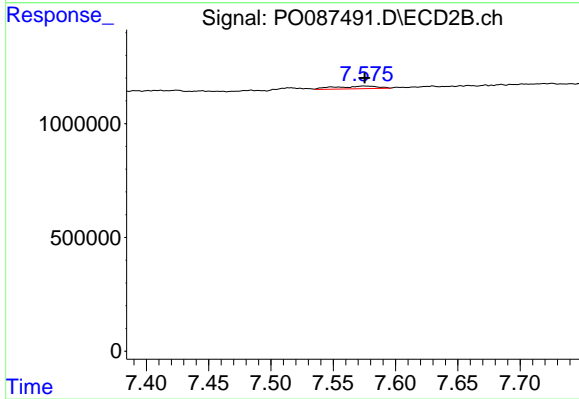
#41 AR-1268-1

R.T.: 7.515 min
 Delta R.T.: 0.004 min
 Response: 93047
 Conc: 0.81 ng/ml



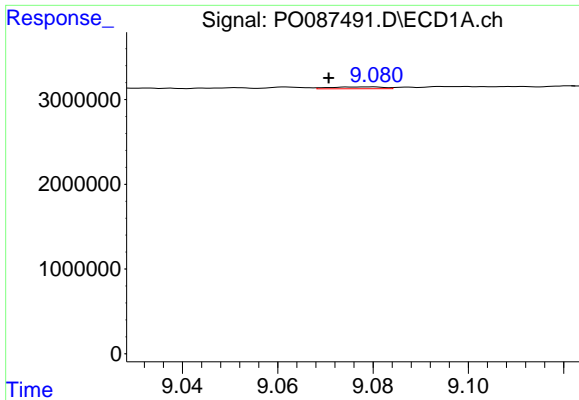
#42 AR-1268-2

R.T.: 8.829 min
 Delta R.T.: -0.005 min
 Response: 1221151
 Conc: 4.54 ng/ml



#42 AR-1268-2

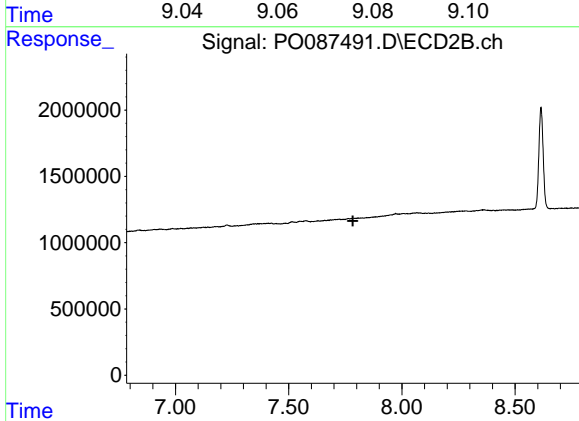
R.T.: 7.576 min
 Delta R.T.: 0.000 min
 Response: 270677
 Conc: 2.64 ng/ml



#43 AR-1268-3

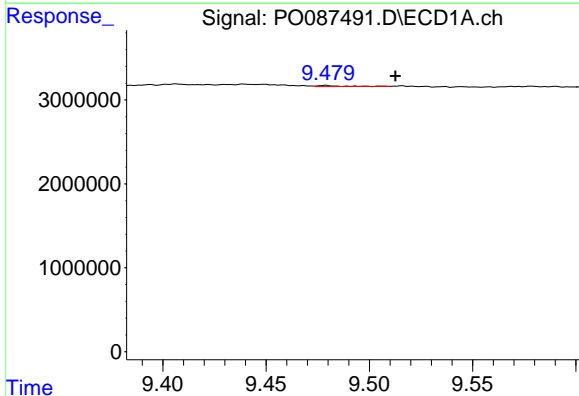
R.T.: 9.079 min
 Delta R.T.: 0.009 min
 Response: 174785
 Conc: 0.75 ng/ml

Instrument :
 ECD_O
 ClientSampleId :



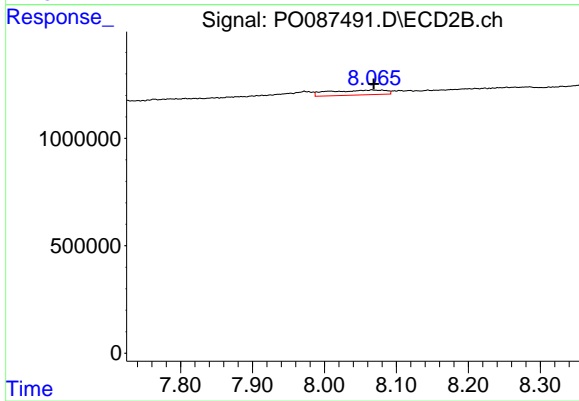
#43 AR-1268-3

R.T.: 0.000 min
 Exp R.T. : 7.783 min
 Response: 0
 Conc: N.D.



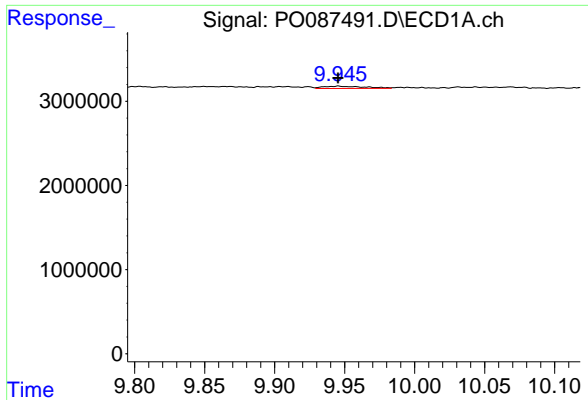
#44 AR-1268-4

R.T.: 9.479 min
 Delta R.T.: -0.034 min
 Response: 104369
 Conc: 1.02 ng/ml



#44 AR-1268-4

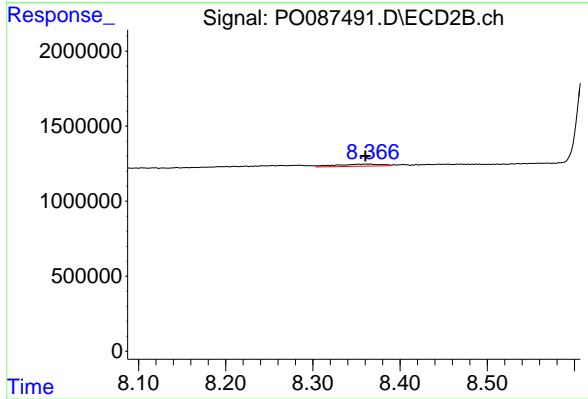
R.T.: 8.080 min
 Delta R.T.: 0.011 min
 Response: 1213734
 Conc: 34.21 ng/ml



#45 AR-1268-5

R.T.: 9.946 min
Delta R.T.: 0.000 min
Response: 565404
Conc: 0.75 ng/ml

Instrument :
ECD_O
ClientSampleId :



#45 AR-1268-5

R.T.: 8.362 min
Delta R.T.: 0.002 min
Response: 528893
Conc: 2.11 ng/ml