

Data Path : Z:\pestpcbsrv\HPCHEM1\ECD\_O\Data\P0062722\  
 Data File : P0087492.D  
 Signal(s) : Signal #1: ECD1A.ch Signal #2: ECD2B.ch  
 Acq On : 28 Jun 2022 13:29  
 Operator : YP/AJ  
 Sample : N3502-06  
 Misc :  
 ALS Vial : 71 Sample Multiplier: 1

Instrument :  
 ECD\_O  
 ClientSampleId :  
 D-43-LC

Integration File signal 1: autoint1.e  
 Integration File signal 2: autoint2.e  
 Quant Time: Jun 28 15:14:24 2022  
 Quant Method : Z:\pestpcbsrv\HPCHEM1\ECD\_O\methods\P0062722.M  
 Quant Title : GC EXTRACTABLES  
 QLast Update : Tue Jun 28 02:46:21 2022  
 Response via : Initial Calibration  
 Integrator: ChemStation

Volume Inj. : 2 µl  
 Signal #1 Phase : ZB-MR1 Signal #2 Phase: ZB-MR2  
 Signal #1 Info : 30Mx0.32mmx 0.50µ Signal #2 Info : 30M x 0.32mm x 0.25µm

Compound	RT#1	RT#2	Resp#1	Resp#2	ng/ml	ng/ml
System Monitoring Compounds						
1) SA Tetrachlo...	4.452	3.612	50911948	21927146	19.670	22.284
2) SA Decachlor...	10.305	8.615	29396547	12275463	14.391	15.142
Target Compounds						
3) L1 AR-1016-1	5.559f	0.000	900145	0	10.029	N.D. #
7) L1 AR-1016-5	0.000	5.128	0	364703	N.D.	11.923 #
8) L2 AR-1221-1	4.661	3.831	13766742	206372	447.543	17.573 #
9) L2 AR-1221-2	4.760	3.893	700392	4961536	30.899	558.055 #
10) L2 AR-1221-3	4.789	0.000	180165	0	2.576	N.D. #
11) L3 AR-1232-1	4.789	0.000	180165	0	2.752	N.D. #
12) L3 AR-1232-2	5.191	0.000	2286883	0	70.822	N.D. #
15) L3 AR-1232-5	0.000	5.128	0	364703	N.D.	29.063 #
16) L4 AR-1242-1	5.559f	0.000	900145	0	12.414	N.D. #
20) L4 AR-1242-5	6.551	0.000	126075	0	2.375	N.D. #
21) L5 AR-1248-1	5.559f	0.000	900145	0	15.680	N.D. #
24) L5 AR-1248-4	6.530	5.128	92508	364703	0.940	9.453 #
25) L5 AR-1248-5	6.551	0.000	126075	0	1.312	N.D. #
26) L6 AR-1254-1	6.495	0.000	146538	0	1.462	N.D. #
27) L6 AR-1254-2	6.708	0.000	187689	0	1.230	N.D. #
28) L6 AR-1254-3	7.105	0.000	2206175	0	14.485	N.D. #
29) L6 AR-1254-4	7.357	0.000	1262513	0	11.470	N.D. #
30) L6 AR-1254-5	7.762	0.000	1227899	0	10.230	N.D. #
32) L7 AR-1260-2	7.495	0.000	11727364	0	86.056	N.D. #
33) L7 AR-1260-3	7.896	0.000	1938356	0	20.694	N.D. #
34) L7 AR-1260-4	8.064	6.983	1932844	129777	18.477	2.791 #
35) L7 AR-1260-5	8.419	7.208	1752696	205849	8.885	1.910 #
36) L8 AR-1262-1	7.896f	6.837f	1938356	498236	13.544	18.981 #
37) L8 AR-1262-2	8.419	7.208	1752696	205849	6.973	1.939 #
38) L8 AR-1262-3	8.758	7.521	327125	237918	1.809	5.800 #
39) L8 AR-1262-4	8.827	7.577	826438	243084	9.564	3.249 #
40) L8 AR-1262-5	9.448f	8.138f	352626	2040892	3.681	60.843 #
41) L9 AR-1268-1	8.758	7.521	327125	237918	1.115	2.067 #
42) L9 AR-1268-2	8.827	7.577	826438	243084	3.071	2.368
43) L9 AR-1268-3	9.071	7.770	154721	245110	0.662	2.896 #
44) L9 AR-1268-4	9.448f	8.138f	352626	2040892	3.449	57.531 #
45) L9 AR-1268-5	9.938	8.363	1641358	413142	2.174	1.650

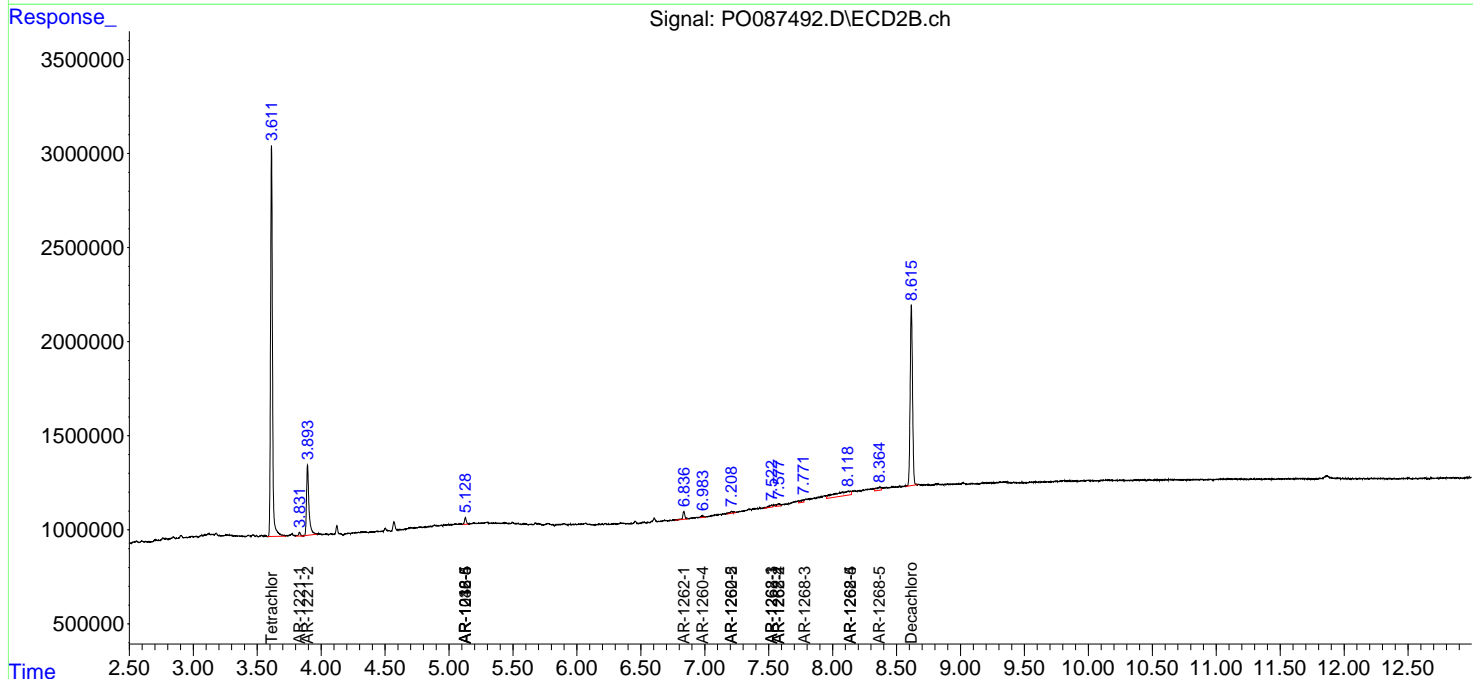
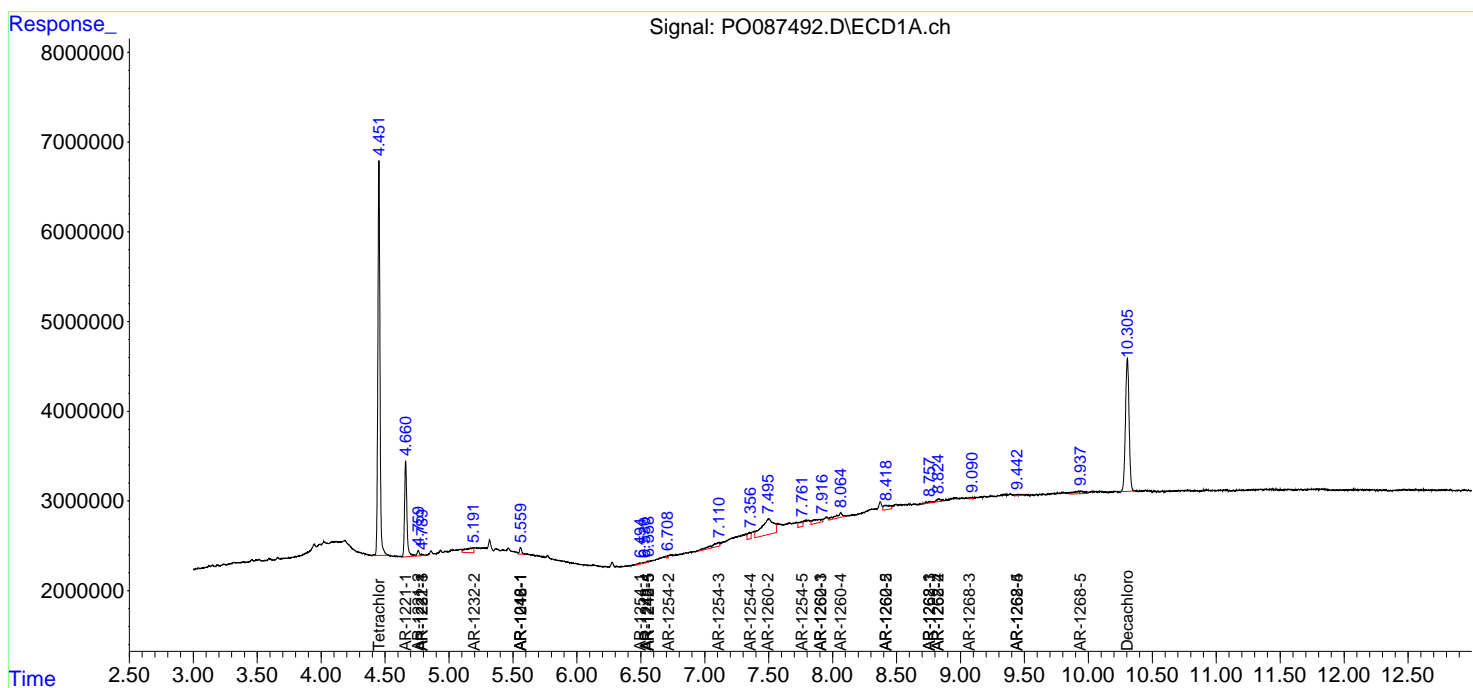
(f)=RT Delta > 1/2 Window (#)=Amounts differ by > 25% (m)=manual int.

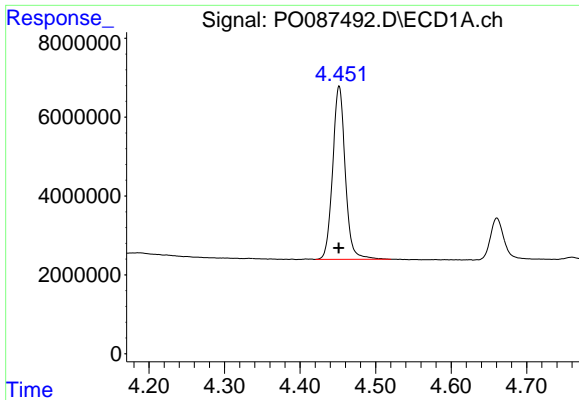
Data Path : Z:\pestpcbsrv\HPCHEM1\ECD\_O\Data\PO062722\  
 Data File : PO087492.D  
 Signal(s) : Signal #1: ECD1A.ch Signal #2: ECD2B.ch  
 Acq On : 28 Jun 2022 13:29  
 Operator : YP/AJ  
 Sample : N3502-06  
 Misc :  
 ALS Vial : 71 Sample Multiplier: 1

Instrument :  
 ECD\_O  
 ClientSampleId :  
 D-43-LC

Integration File signal 1: autoint1.e  
 Integration File signal 2: autoint2.e  
 Quant Time: Jun 28 15:14:24 2022  
 Quant Method : Z:\pestpcbsrv\HPCHEM1\ECD\_O\methods\PO062722.M  
 Quant Title : GC EXTRACTABLES  
 QLast Update : Tue Jun 28 02:46:21 2022  
 Response via : Initial Calibration  
 Integrator: ChemStation

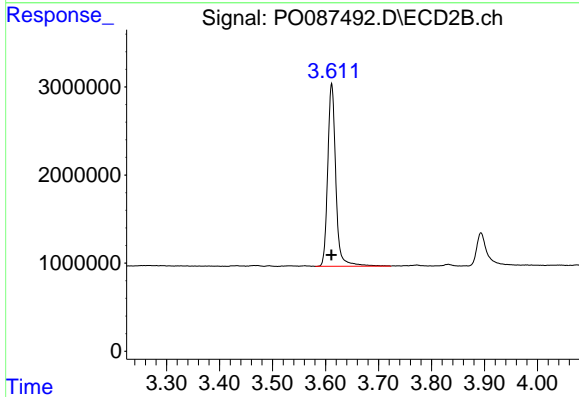
Volume Inj. : 2 µl  
 Signal #1 Phase : ZB-MR1 Signal #2 Phase: ZB-MR2  
 Signal #1 Info : 30Mx0.32mmx 0.50µ Signal #2 Info : 30M x 0.32mm x 0.25µm



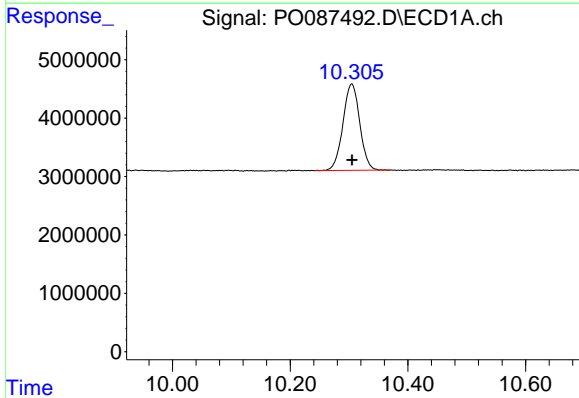


#1 Tetrachloro-m-xylene  
 R.T.: 4.452 min  
 Delta R.T.: 0.000 min  
 Response: 50911948  
 Conc: 19.67 ng/ml

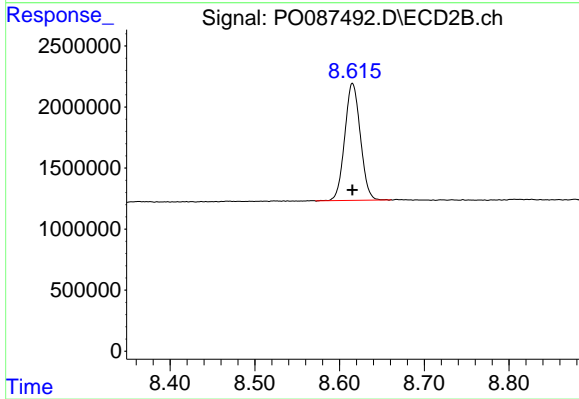
Instrument :  
 ECD\_O  
 ClientSampleId :  
 D-43-LC



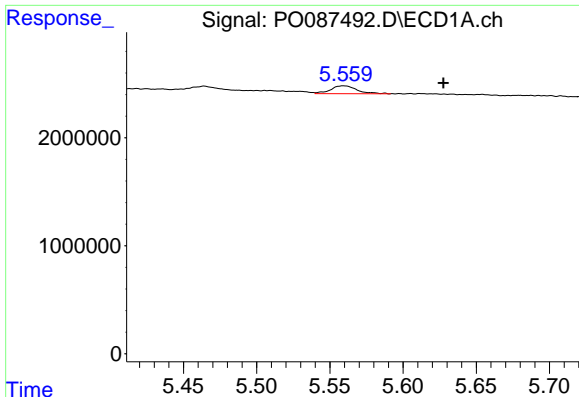
#1 Tetrachloro-m-xylene  
 R.T.: 3.612 min  
 Delta R.T.: 0.000 min  
 Response: 21927146  
 Conc: 22.28 ng/ml



#2 Decachlorobiphenyl  
 R.T.: 10.305 min  
 Delta R.T.: 0.000 min  
 Response: 29396547  
 Conc: 14.39 ng/ml



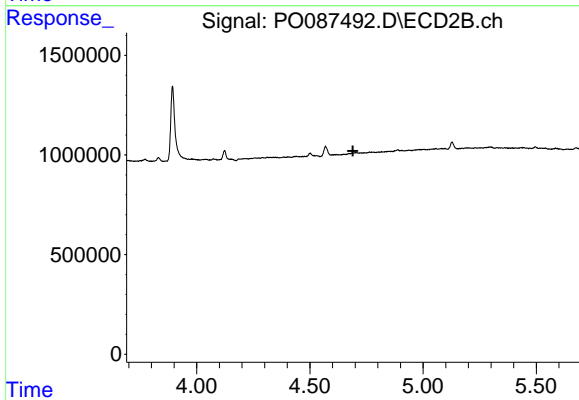
#2 Decachlorobiphenyl  
 R.T.: 8.615 min  
 Delta R.T.: 0.000 min  
 Response: 12275463  
 Conc: 15.14 ng/ml



#3 AR-1016-1

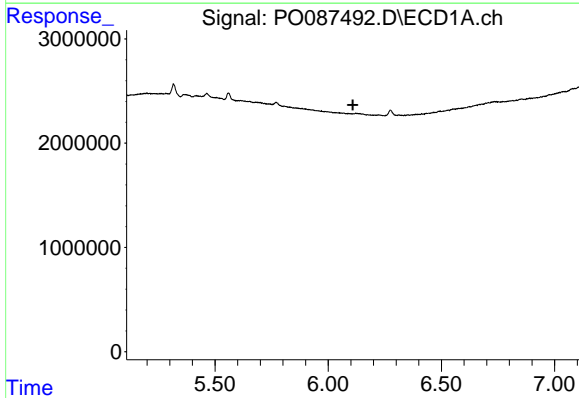
R.T.: 5.559 min  
 Delta R.T.: -0.068 min  
 Response: 900145  
 Conc: 10.03 ng/ml

Instrument :  
 ECD\_O  
 ClientSampleId :  
 D-43-LC



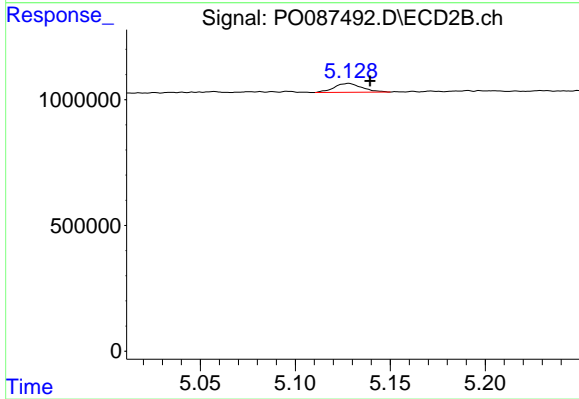
#3 AR-1016-1

R.T.: 0.000 min  
 Exp R.T. : 4.690 min  
 Response: 0  
 Conc: N.D.



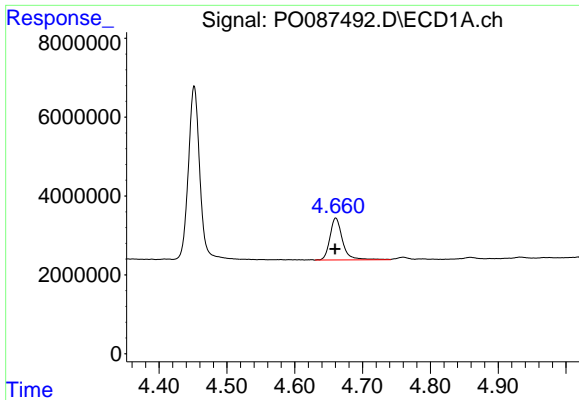
#7 AR-1016-5

R.T.: 0.000 min  
 Exp R.T. : 6.109 min  
 Response: 0  
 Conc: N.D.



#7 AR-1016-5

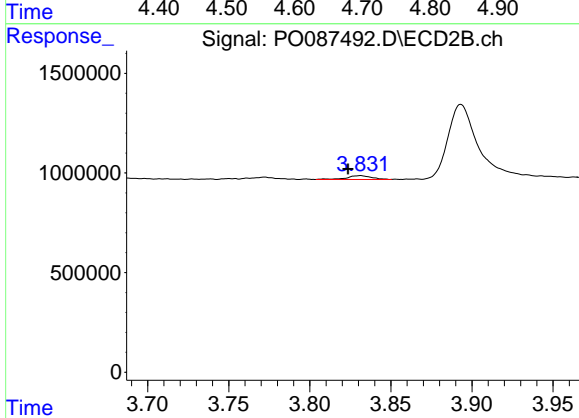
R.T.: 5.128 min  
 Delta R.T.: -0.011 min  
 Response: 364703  
 Conc: 11.92 ng/ml



#8 AR-1221-1

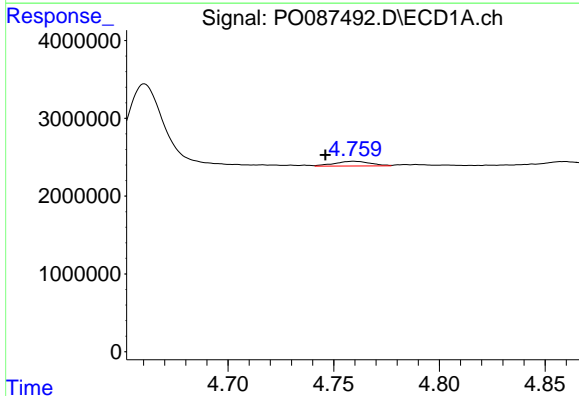
R.T.: 4.661 min  
 Delta R.T.: 0.001 min  
 Response: 13766742  
 Conc: 447.54 ng/ml

Instrument :  
 ECD\_O  
 ClientSampleId :  
 D-43-LC



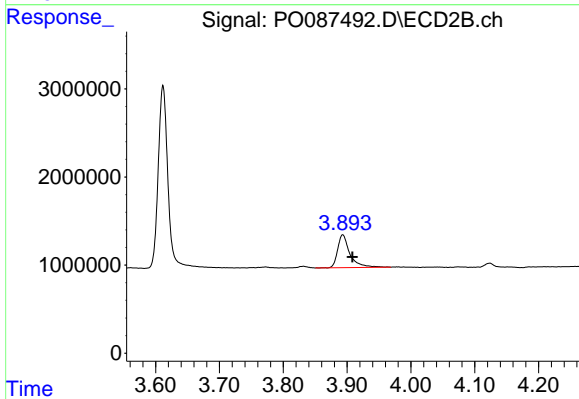
#8 AR-1221-1

R.T.: 3.831 min  
 Delta R.T.: 0.008 min  
 Response: 206372  
 Conc: 17.57 ng/ml



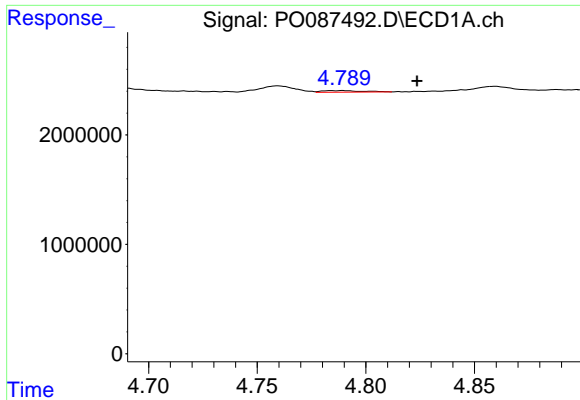
#9 AR-1221-2

R.T.: 4.760 min  
 Delta R.T.: 0.013 min  
 Response: 700392  
 Conc: 30.90 ng/ml



#9 AR-1221-2

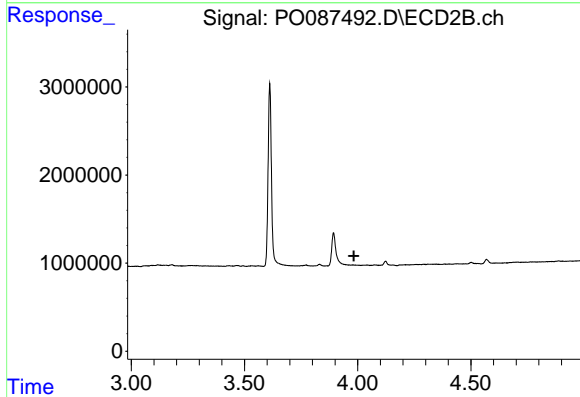
R.T.: 3.893 min  
 Delta R.T.: -0.015 min  
 Response: 4961536  
 Conc: 558.06 ng/ml



#10 AR-1221-3

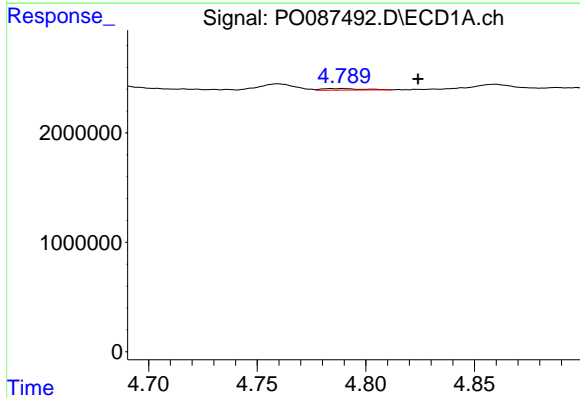
R.T.: 4.789 min  
 Delta R.T.: -0.034 min  
 Response: 180165  
 Conc: 2.58 ng/ml

Instrument :  
 ECD\_O  
 ClientSampleId :  
 D-43-LC



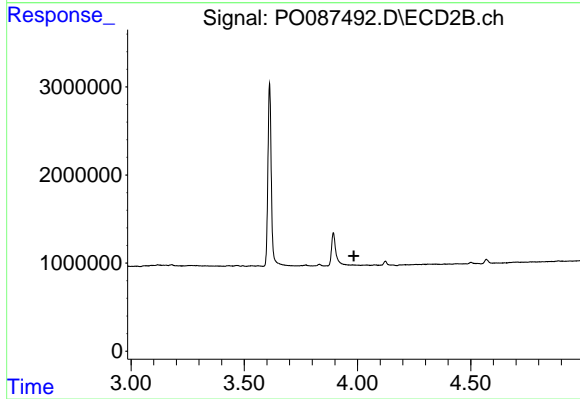
#10 AR-1221-3

R.T.: 0.000 min  
 Exp R.T. : 3.984 min  
 Response: 0  
 Conc: N.D.



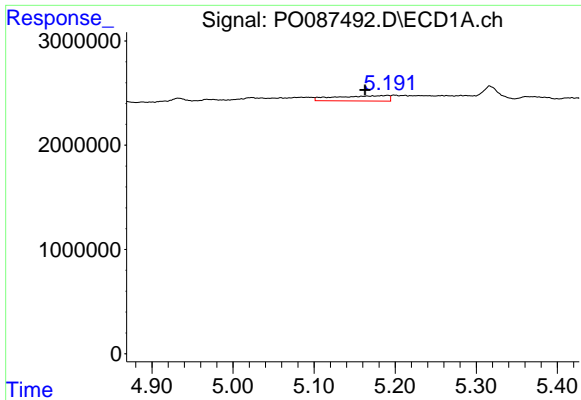
#11 AR-1232-1

R.T.: 4.789 min  
 Delta R.T.: -0.035 min  
 Response: 180165  
 Conc: 2.75 ng/ml



#11 AR-1232-1

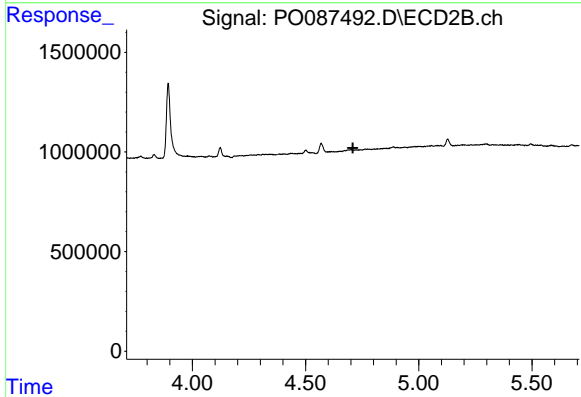
R.T.: 0.000 min  
 Exp R.T. : 3.984 min  
 Response: 0  
 Conc: N.D.



#12 AR-1232-2

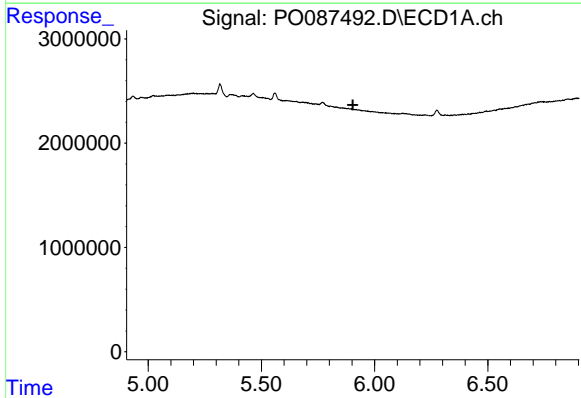
R.T.: 5.191 min  
 Delta R.T.: 0.028 min  
 Response: 2286883  
 Conc: 70.82 ng/ml

Instrument :  
 ECD\_O  
 ClientSampleId :  
 D-43-LC



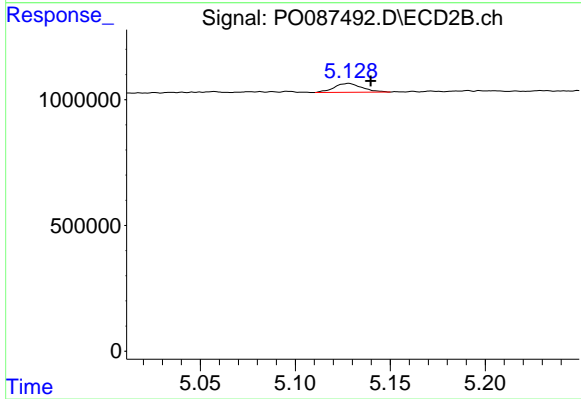
#12 AR-1232-2

R.T.: 0.000 min  
 Exp R.T. : 4.709 min  
 Response: 0  
 Conc: N.D.



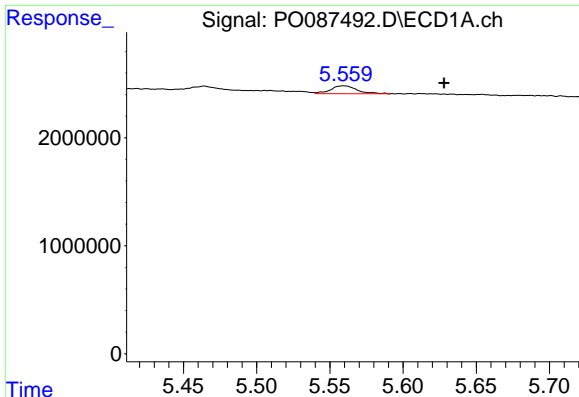
#15 AR-1232-5

R.T.: 0.000 min  
 Exp R.T. : 5.904 min  
 Response: 0  
 Conc: N.D.



#15 AR-1232-5

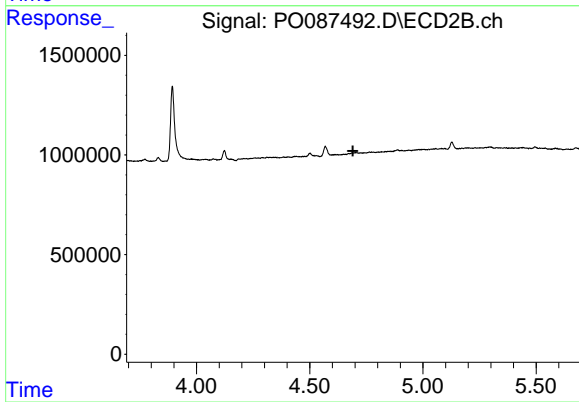
R.T.: 5.128 min  
 Delta R.T.: -0.012 min  
 Response: 364703  
 Conc: 29.06 ng/ml



#16 AR-1242-1

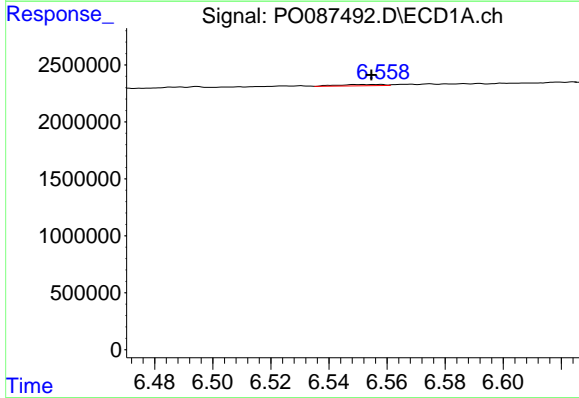
R.T.: 5.559 min  
 Delta R.T.: -0.068 min  
 Response: 900145  
 Conc: 12.41 ng/ml

Instrument :  
 ECD\_O  
 ClientSampleId :  
 D-43-LC



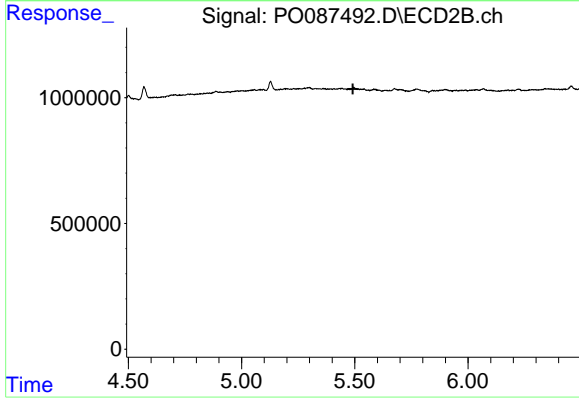
#16 AR-1242-1

R.T.: 0.000 min  
 Exp R.T. : 4.691 min  
 Response: 0  
 Conc: N.D.



#20 AR-1242-5

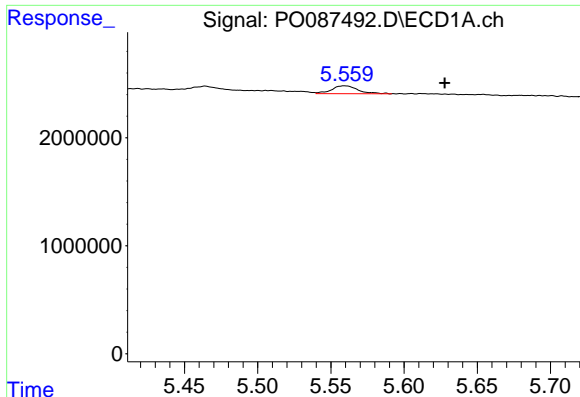
R.T.: 6.551 min  
 Delta R.T.: -0.003 min  
 Response: 126075  
 Conc: 2.37 ng/ml



#20 AR-1242-5

R.T.: 0.000 min  
 Exp R.T. : 5.491 min  
 Response: 0  
 Conc: N.D.

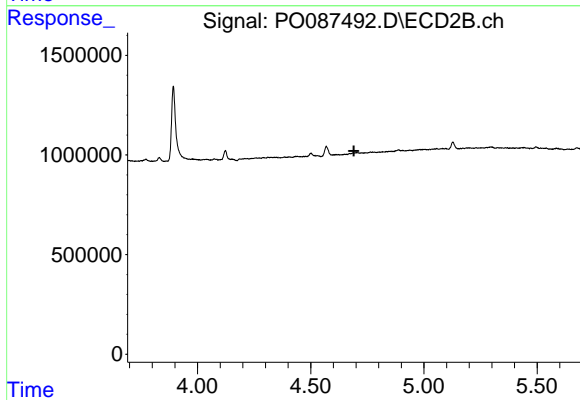




#21 AR-1248-1

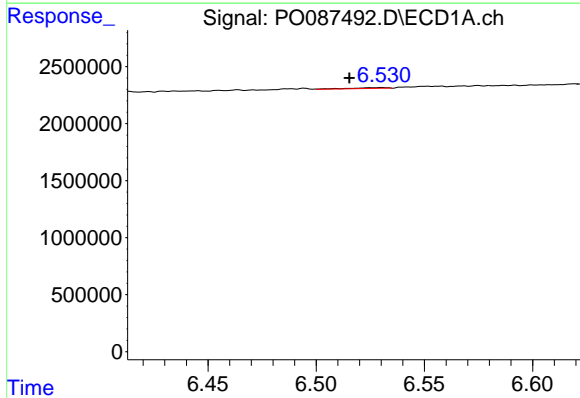
R.T.: 5.559 min  
 Delta R.T.: -0.068 min  
 Response: 900145  
 Conc: 15.68 ng/ml

Instrument :  
 ECD\_O  
 ClientSampleId :  
 D-43-LC



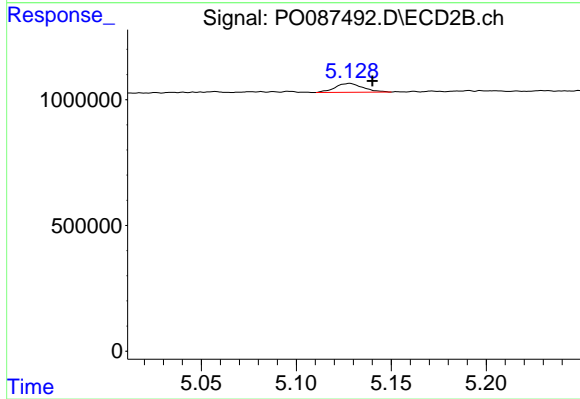
#21 AR-1248-1

R.T.: 0.000 min  
 Exp R.T. : 4.691 min  
 Response: 0  
 Conc: N.D.



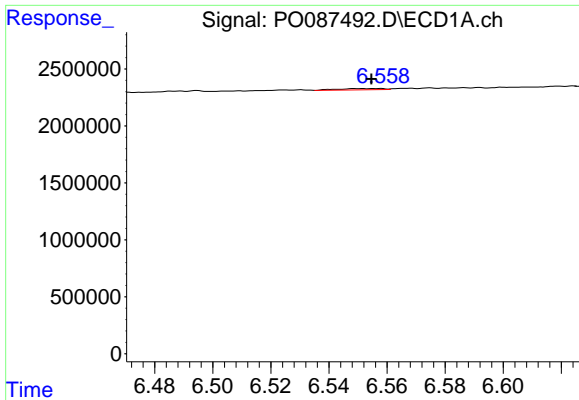
#24 AR-1248-4

R.T.: 6.530 min  
 Delta R.T.: 0.015 min  
 Response: 92508  
 Conc: 0.94 ng/ml



#24 AR-1248-4

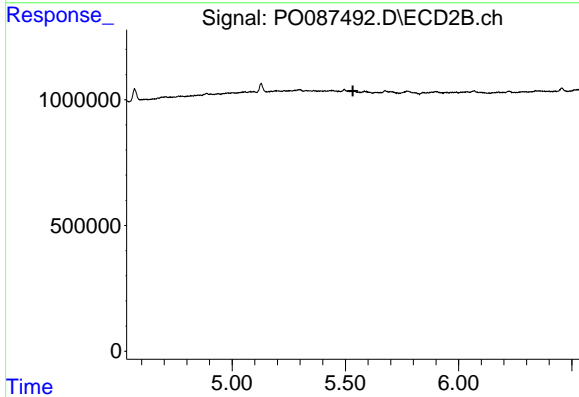
R.T.: 5.128 min  
 Delta R.T.: -0.012 min  
 Response: 364703  
 Conc: 9.45 ng/ml



#25 AR-1248-5

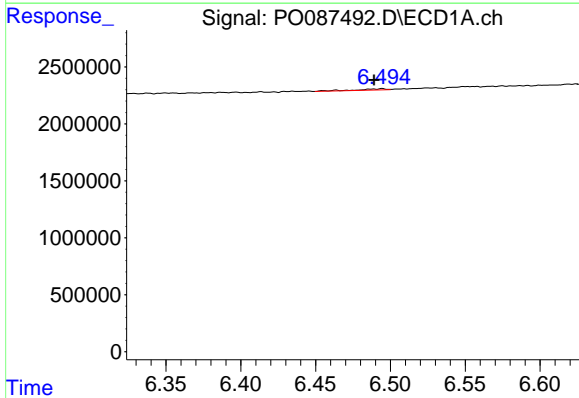
R.T.: 6.551 min  
 Delta R.T.: -0.003 min  
 Response: 126075  
 Conc: 1.31 ng/ml

Instrument :  
 ECD\_O  
 ClientSampleId :  
 D-43-LC



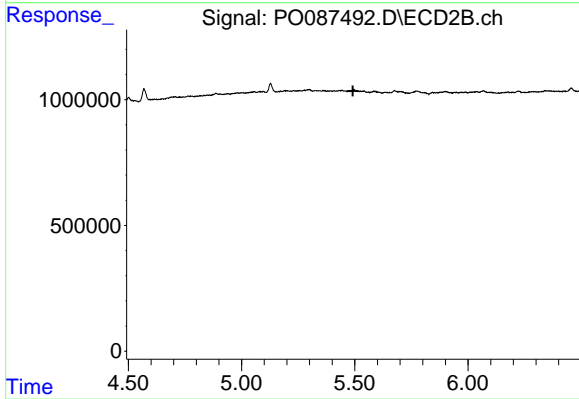
#25 AR-1248-5

R.T.: 0.000 min  
 Exp R.T. : 5.533 min  
 Response: 0  
 Conc: N.D.



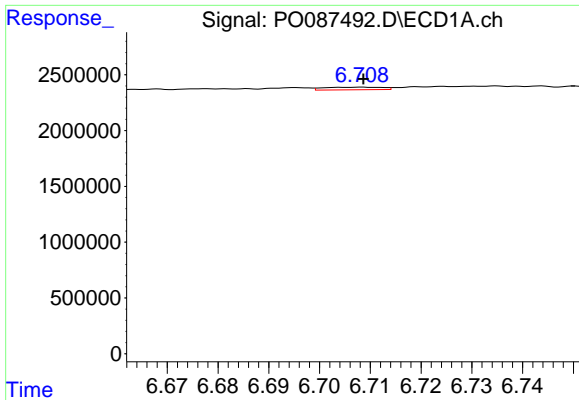
#26 AR-1254-1

R.T.: 6.495 min  
 Delta R.T.: 0.005 min  
 Response: 146538  
 Conc: 1.46 ng/ml



#26 AR-1254-1

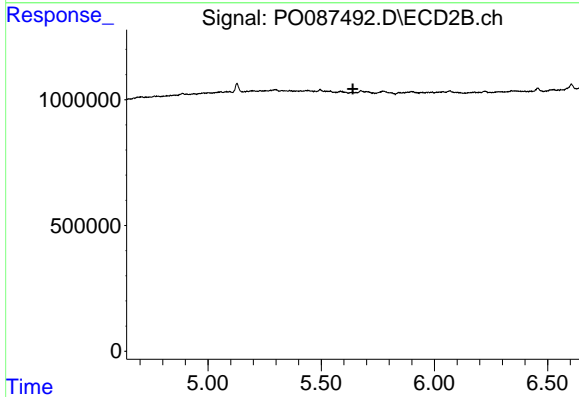
R.T.: 0.000 min  
 Exp R.T. : 5.492 min  
 Response: 0  
 Conc: N.D.



#27 AR-1254-2

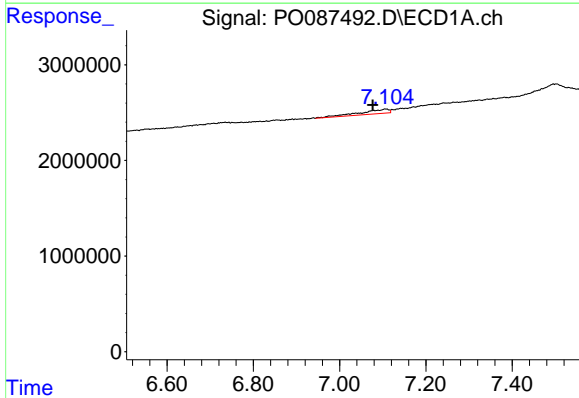
R.T.: 6.708 min  
 Delta R.T.: 0.000 min  
 Response: 187689  
 Conc: 1.23 ng/ml

Instrument :  
 ECD\_O  
 ClientSampleId :  
 D-43-LC



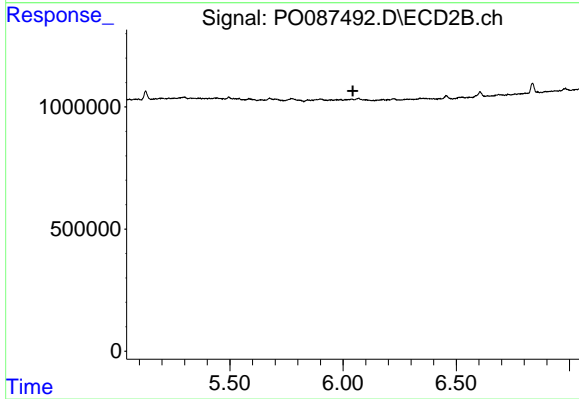
#27 AR-1254-2

R.T.: 0.000 min  
 Exp R.T. : 5.640 min  
 Response: 0  
 Conc: N.D.



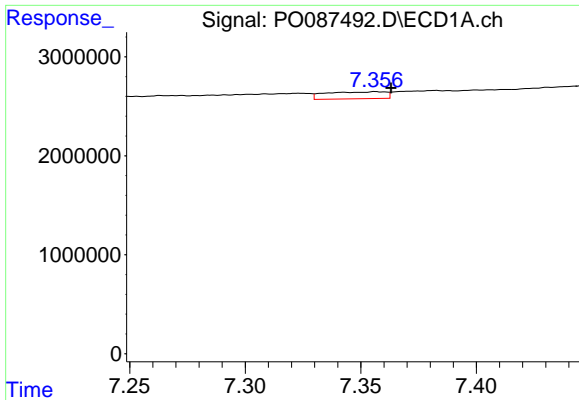
#28 AR-1254-3

R.T.: 7.105 min  
 Delta R.T.: 0.028 min  
 Response: 2206175  
 Conc: 14.48 ng/ml



#28 AR-1254-3

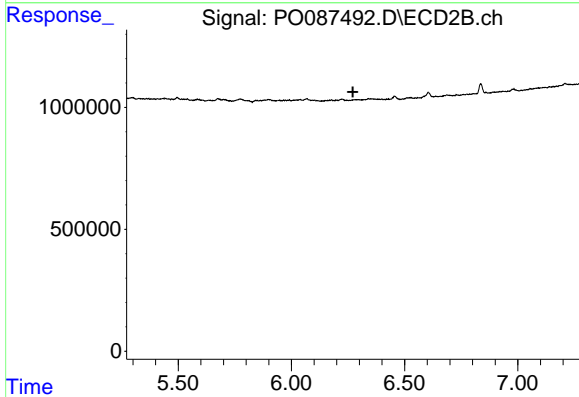
R.T.: 0.000 min  
 Exp R.T. : 6.043 min  
 Response: 0  
 Conc: N.D.



#29 AR-1254-4

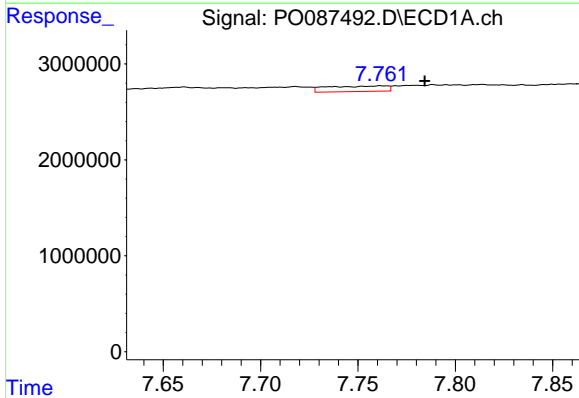
R.T.: 7.357 min  
 Delta R.T.: -0.007 min  
 Response: 1262513  
 Conc: 11.47 ng/ml

Instrument :  
 ECD\_O  
 ClientSampleId :  
 D-43-LC



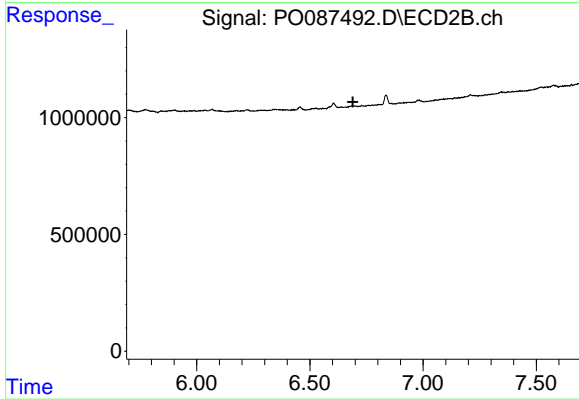
#29 AR-1254-4

R.T.: 0.000 min  
 Exp R.T. : 6.272 min  
 Response: 0  
 Conc: N.D.



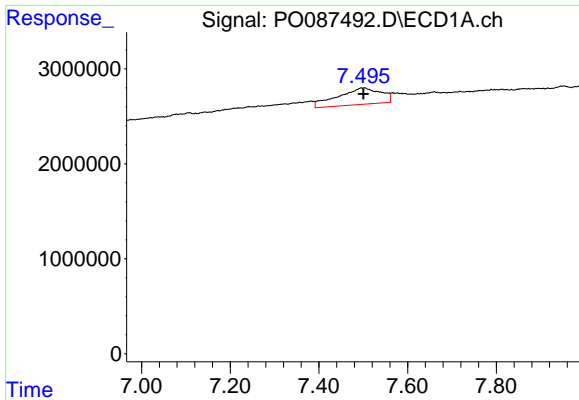
#30 AR-1254-5

R.T.: 7.762 min  
 Delta R.T.: -0.022 min  
 Response: 1227899  
 Conc: 10.23 ng/ml



#30 AR-1254-5

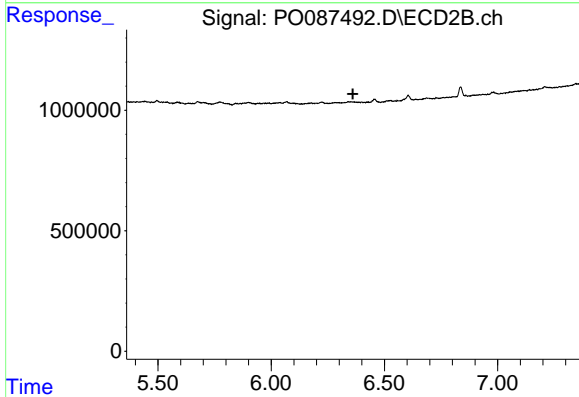
R.T.: 0.000 min  
 Exp R.T. : 6.690 min  
 Response: 0  
 Conc: N.D.



#32 AR-1260-2

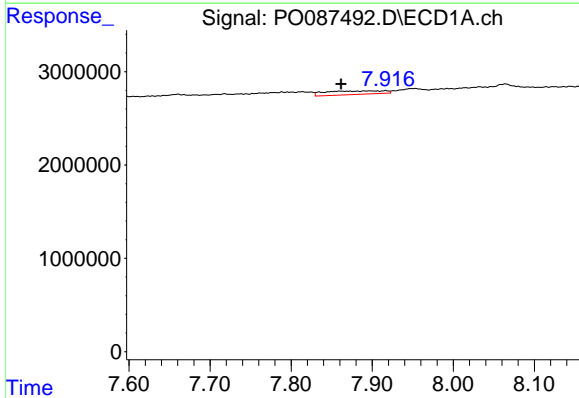
R.T.: 7.495 min  
 Delta R.T.: -0.005 min  
 Response: 11727364  
 Conc: 86.06 ng/ml

Instrument :  
 ECD\_O  
 ClientSampleId :  
 D-43-LC



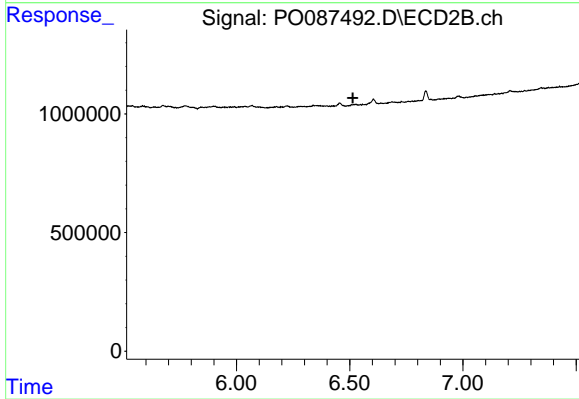
#32 AR-1260-2

R.T.: 0.000 min  
 Exp R.T. : 6.361 min  
 Response: 0  
 Conc: N.D.



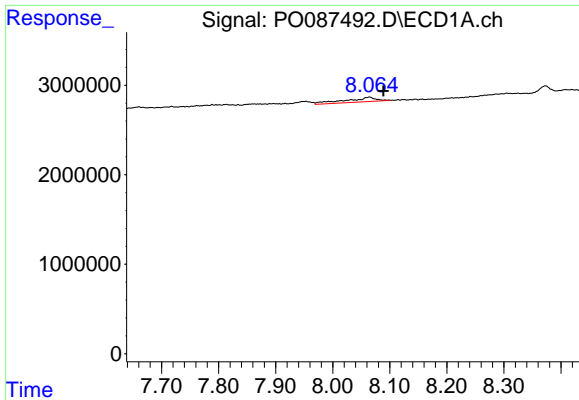
#33 AR-1260-3

R.T.: 7.896 min  
 Delta R.T.: 0.035 min  
 Response: 1938356  
 Conc: 20.69 ng/ml



#33 AR-1260-3

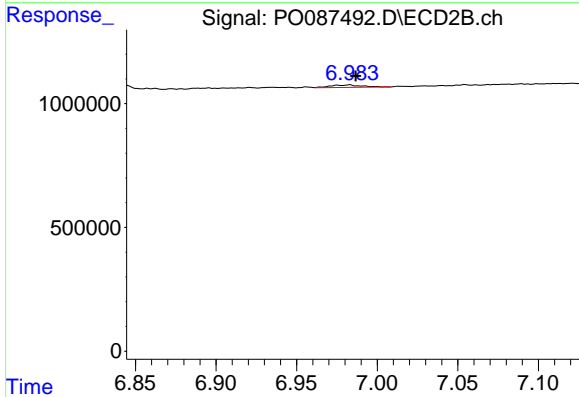
R.T.: 0.000 min  
 Exp R.T. : 6.514 min  
 Response: 0  
 Conc: N.D.



#34 AR-1260-4

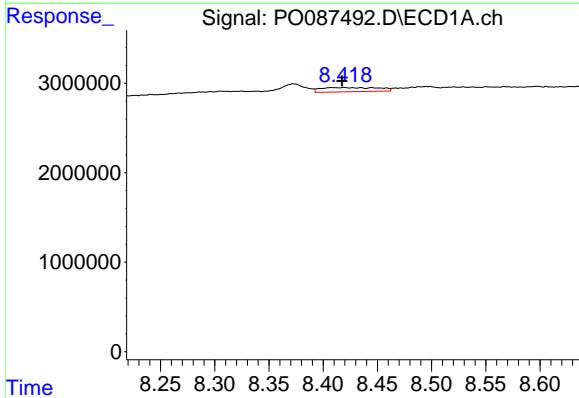
R.T.: 8.064 min  
 Delta R.T.: -0.025 min  
 Response: 1932844  
 Conc: 18.48 ng/ml

Instrument :  
 ECD\_O  
 ClientSampleId :  
 D-43-LC



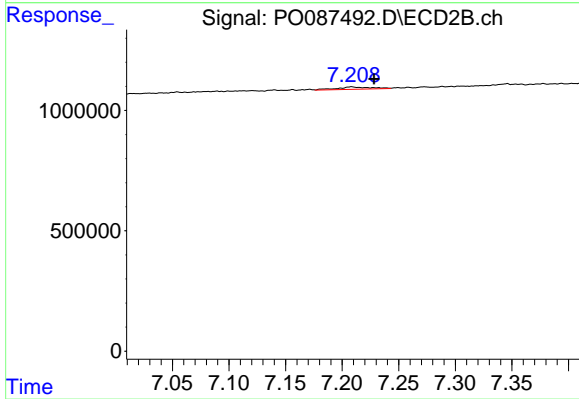
#34 AR-1260-4

R.T.: 6.983 min  
 Delta R.T.: -0.004 min  
 Response: 129777  
 Conc: 2.79 ng/ml



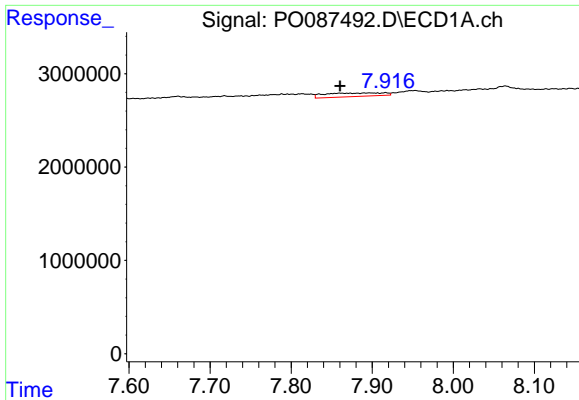
#35 AR-1260-5

R.T.: 8.419 min  
 Delta R.T.: 0.001 min  
 Response: 1752696  
 Conc: 8.88 ng/ml



#35 AR-1260-5

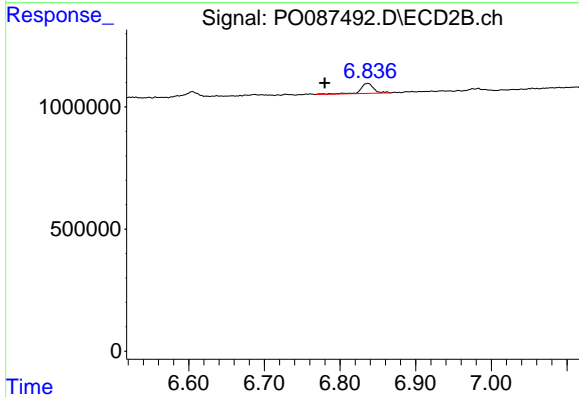
R.T.: 7.208 min  
 Delta R.T.: -0.020 min  
 Response: 205849  
 Conc: 1.91 ng/ml



#36 AR-1262-1

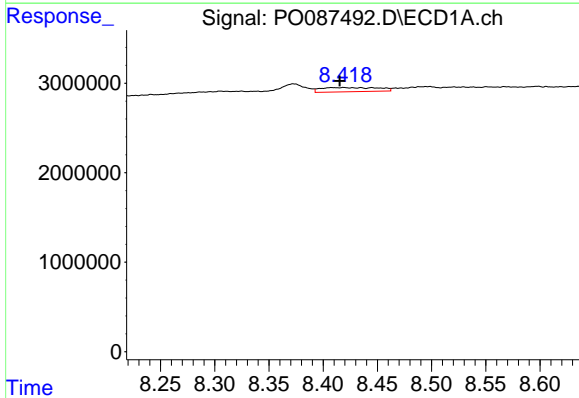
R.T.: 7.896 min  
 Delta R.T.: 0.036 min  
 Response: 1938356  
 Conc: 13.54 ng/ml

Instrument :  
 ECD\_O  
 ClientSampleId :  
 D-43-LC



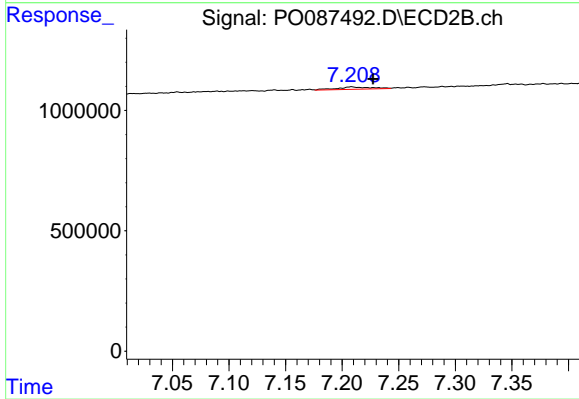
#36 AR-1262-1

R.T.: 6.837 min  
 Delta R.T.: 0.057 min  
 Response: 498236  
 Conc: 18.98 ng/ml



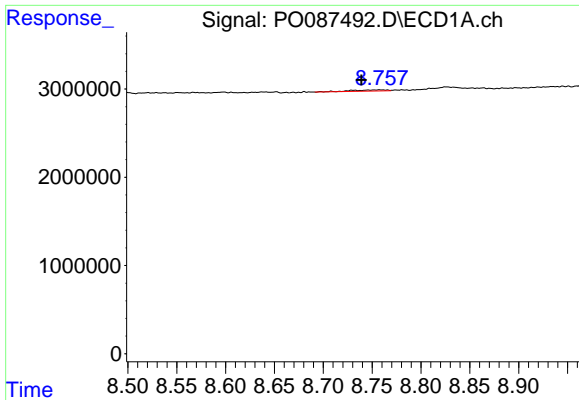
#37 AR-1262-2

R.T.: 8.419 min  
 Delta R.T.: 0.003 min  
 Response: 1752696  
 Conc: 6.97 ng/ml



#37 AR-1262-2

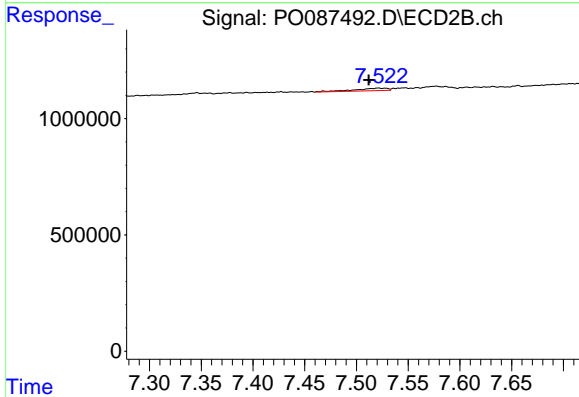
R.T.: 7.208 min  
 Delta R.T.: -0.019 min  
 Response: 205849  
 Conc: 1.94 ng/ml



#38 AR-1262-3

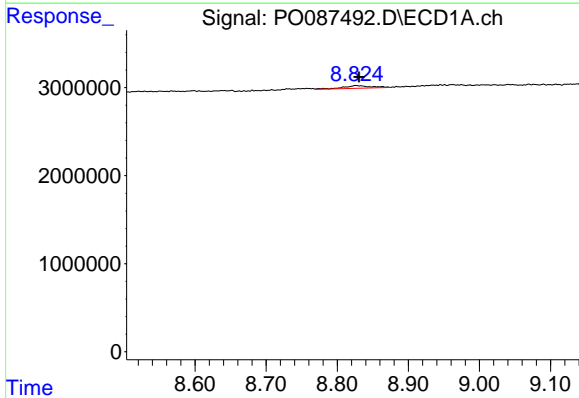
R.T.: 8.758 min  
 Delta R.T.: 0.019 min  
 Response: 327125  
 Conc: 1.81 ng/ml

Instrument :  
 ECD\_O  
 ClientSampleId :  
 D-43-LC



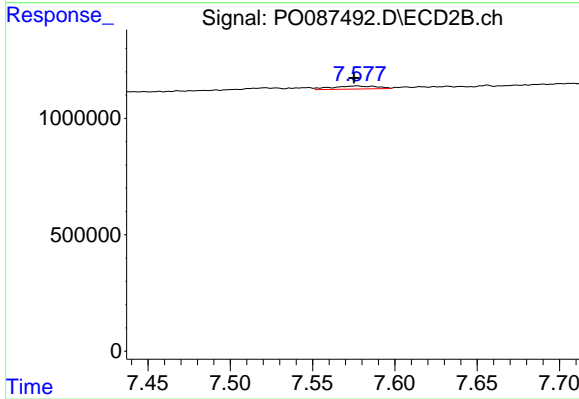
#38 AR-1262-3

R.T.: 7.521 min  
 Delta R.T.: 0.009 min  
 Response: 237918  
 Conc: 5.80 ng/ml



#39 AR-1262-4

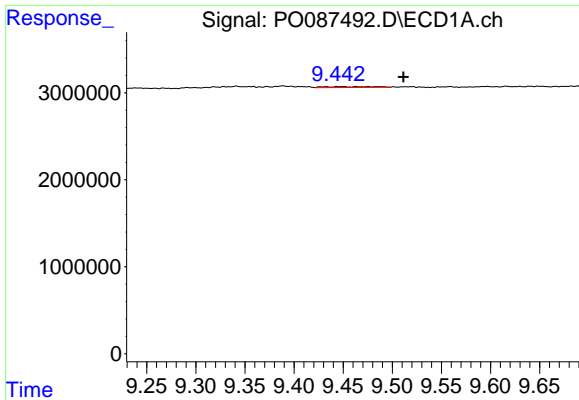
R.T.: 8.827 min  
 Delta R.T.: -0.004 min  
 Response: 826438  
 Conc: 9.56 ng/ml



#39 AR-1262-4

R.T.: 7.577 min  
 Delta R.T.: 0.002 min  
 Response: 243084  
 Conc: 3.25 ng/ml

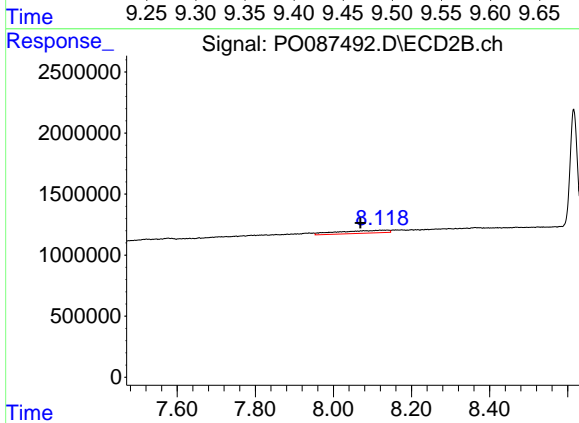




#40 AR-1262-5

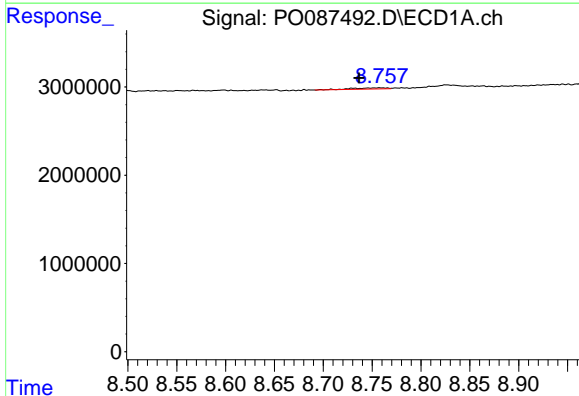
R.T.: 9.448 min  
 Delta R.T.: -0.064 min  
 Response: 352626  
 Conc: 3.68 ng/ml

Instrument :  
 ECD\_O  
 ClientSampleId :  
 D-43-LC



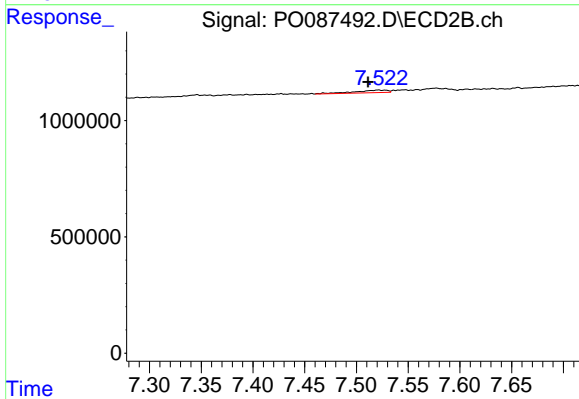
#40 AR-1262-5

R.T.: 8.138 min  
 Delta R.T.: 0.069 min  
 Response: 2040892  
 Conc: 60.84 ng/ml



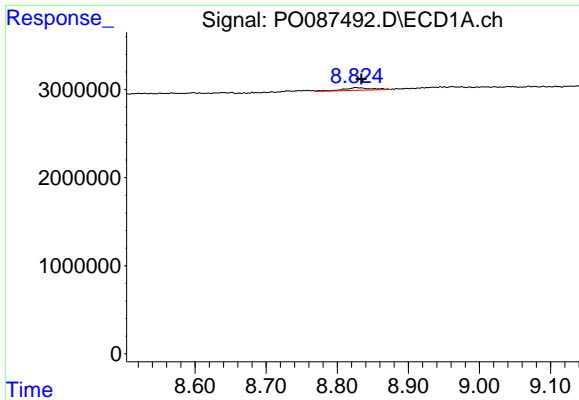
#41 AR-1268-1

R.T.: 8.758 min  
 Delta R.T.: 0.021 min  
 Response: 327125  
 Conc: 1.12 ng/ml



#41 AR-1268-1

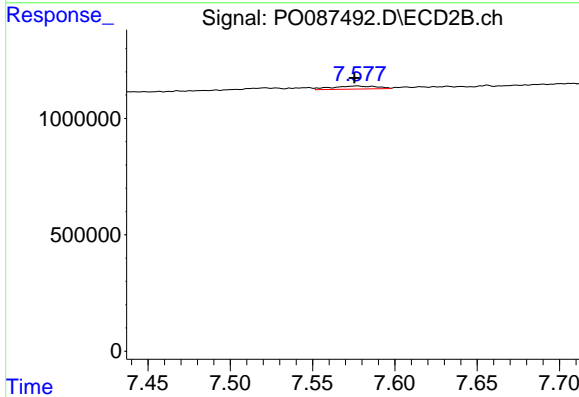
R.T.: 7.521 min  
 Delta R.T.: 0.010 min  
 Response: 237918  
 Conc: 2.07 ng/ml



#42 AR-1268-2

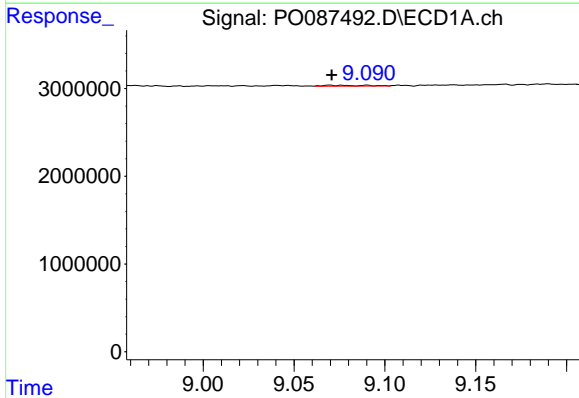
R.T.: 8.827 min  
 Delta R.T.: -0.007 min  
 Response: 826438  
 Conc: 3.07 ng/ml

Instrument :  
 ECD\_O  
 ClientSampleId :  
 D-43-LC



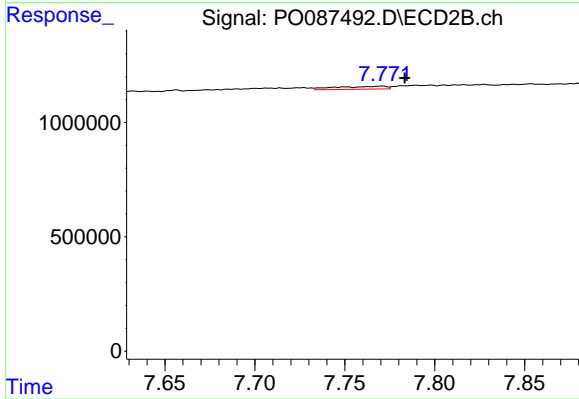
#42 AR-1268-2

R.T.: 7.577 min  
 Delta R.T.: 0.001 min  
 Response: 243084  
 Conc: 2.37 ng/ml



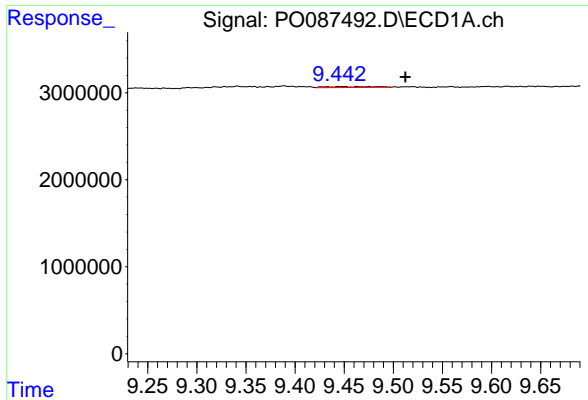
#43 AR-1268-3

R.T.: 9.071 min  
 Delta R.T.: 0.000 min  
 Response: 154721  
 Conc: 0.66 ng/ml



#43 AR-1268-3

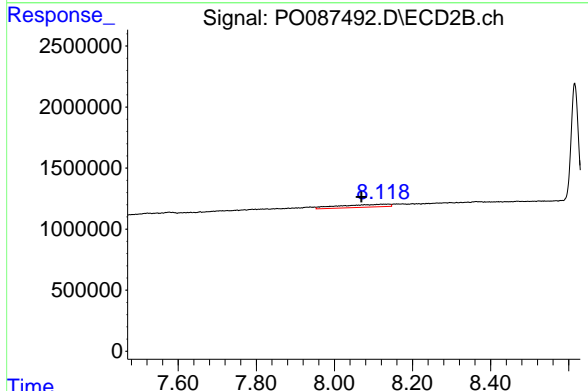
R.T.: 7.770 min  
 Delta R.T.: -0.013 min  
 Response: 245110  
 Conc: 2.90 ng/ml



#44 AR-1268-4

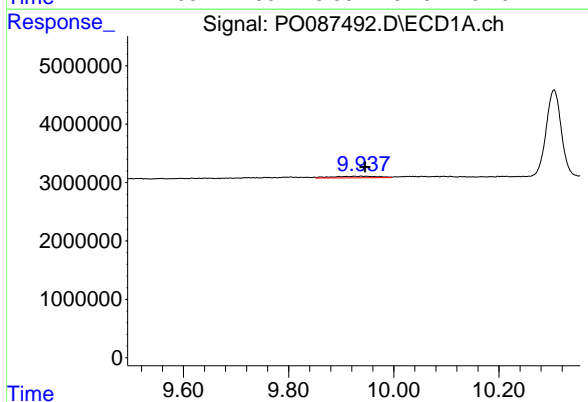
R.T.: 9.448 min  
 Delta R.T.: -0.065 min  
 Response: 352626  
 Conc: 3.45 ng/ml

Instrument :  
 ECD\_O  
 ClientSampleId :  
 D-43-LC



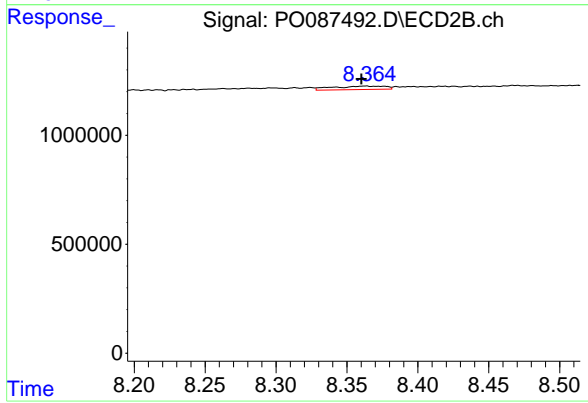
#44 AR-1268-4

R.T.: 8.138 min  
 Delta R.T.: 0.069 min  
 Response: 2040892  
 Conc: 57.53 ng/ml



#45 AR-1268-5

R.T.: 9.938 min  
 Delta R.T.: -0.008 min  
 Response: 1641358  
 Conc: 2.17 ng/ml



#45 AR-1268-5

R.T.: 8.363 min  
 Delta R.T.: 0.003 min  
 Response: 413142  
 Conc: 1.65 ng/ml