

Data Path : Z:\pestpcbsrv\HPCHEM1\ECD_O\Data\P0062725\
 Data File : PO111877.D
 Signal(s) : Signal #1: ECD1A.ch Signal #2: ECD2B.ch
 Acq On : 27 Jun 2025 10:05
 Operator : YP/AJ
 Sample : AR1660CCC500
 Misc :
 ALS Vial : 3 Sample Multiplier: 1

Instrument :
 ECD_O
 ClientSampleId :

Integration File signal 1: autoint1.e
 Integration File signal 2: autoint2.e
 Quant Time: Jun 27 23:16:56 2025
 Quant Method : Z:\pestpcbsrv\HPCHEM1\ECD_O\methods\P0061125.M
 Quant Title : GC EXTRACTABLES
 QLast Update : Thu Jun 12 06:25:26 2025
 Response via : Initial Calibration
 Integrator: ChemStation

Volume Inj. : 2 µl
 Signal #1 Phase : ZB-MR1 Signal #2 Phase: ZB-MR2
 Signal #1 Info : 30Mx0.32mmx 0.50µ Signal #2 Info : 30M x 0.32mm x 0.25µm

Compound	RT#1	RT#2	Resp#1	Resp#2	ng/ml	ng/ml
System Monitoring Compounds						
1) SA Tetrachlo...	3.676	3.671	300.9E6	277.9E6	52.240	49.481
2) SA Decachlor...	8.706	8.654	252.4E6	84781540	48.081	47.693
Target Compounds						
3) L1 AR-1016-1	4.763	4.747	117.4E6	99312208	492.016	504.719
4) L1 AR-1016-2	4.781	4.766	169.1E6	142.7E6	508.180	500.900
5) L1 AR-1016-3	4.838	4.940	114.3E6	75221010	496.743	500.675
6) L1 AR-1016-4	4.958	4.983	92260242	60742597	497.460	498.760
7) L1 AR-1016-5	5.215	5.195	100.7E6	80060919	539.480	502.900
8) L2 AR-1221-1	3.886	3.879	11441436	9853596	131.392	131.955
9) L2 AR-1221-2	3.974	3.966	16916358	14424904	263.627	257.823
10) L2 AR-1221-3	4.049	4.040	60945914	53546918	312.485	311.626
11) L3 AR-1232-1	4.049	4.040	60945914	53546918	401.623	402.640
12) L3 AR-1232-2	4.541	4.766	87685222	142.7E6	1016.981	1082.750
13) L3 AR-1232-3	4.781	4.940	169.1E6	75221010	1038.145	1088.296
14) L3 AR-1232-4	4.958	5.025	92260242	72296824	1060.229	1195.304
15) L3 AR-1232-5	5.001	5.195	72279756	80060919	1277.467	1205.470
16) L4 AR-1242-1	4.763	4.747	117.4E6	99312208	582.654	610.177
17) L4 AR-1242-2	4.781	4.766	169.1E6	142.7E6	600.120	604.491
18) L4 AR-1242-3	4.838	4.940	114.3E6	75221010	574.986	598.944
19) L4 AR-1242-4	4.958	5.025	92260242	72296824	583.198	589.896
20) L4 AR-1242-5	5.610	5.545	25655694	77605844	153.428	517.755 #
21) L5 AR-1248-1	4.763	4.747	117.4E6	99312208	727.819	745.115
22) L5 AR-1248-2	5.001	4.983	72279756	60742597	335.241	340.953
23) L5 AR-1248-3	5.215	5.025	100.7E6	72296824	373.289	381.639
24) L5 AR-1248-4	5.569	5.195	100.0E6	80060919	250.153	350.647 #
25) L5 AR-1248-5	5.610	5.585	25655694	19368369	91.363	88.942
26) L6 AR-1254-1	5.569	5.545	100.0E6	77605844	235.283	240.260
27) L6 AR-1254-2	5.717	5.693	73868205	54068623	194.632	193.577
28) L6 AR-1254-3	6.138	6.109	146.0E6	96478287	255.501	230.229
29) L6 AR-1254-4	6.351	6.321	22990581	13477060	65.898	59.161
30) L6 AR-1254-5	6.769	6.737	252.7E6	146.6E6	493.493	450.290
31) L7 AR-1260-1	6.253	6.224	181.8E6	124.6E6	511.652	496.388
32) L7 AR-1260-2	6.443	6.412	263.9E6	153.6E6	558.546	522.418
33) L7 AR-1260-3	6.809	6.564	238.0E6	131.0E6	560.319	490.190
34) L7 AR-1260-4	7.069	7.034	175.8E6	90669155	558.940	476.964
35) L7 AR-1260-5	7.311	7.275	454.6E6	205.1E6	551.885	482.537
36) L8 AR-1262-1	6.809	6.776	238.0E6	123.2E6	390.166	364.782
37) L8 AR-1262-2	7.311	7.275	454.6E6	205.1E6	482.900	440.316
38) L8 AR-1262-3	7.595	7.556	109.0E6	41500732	274.820	249.576
39) L8 AR-1262-4	7.657	7.620	296.6E6	115.9E6	451.452	418.363
40) L8 AR-1262-5	8.155	8.113	106.7E6	34211347	350.110	336.662
41) L9 AR-1268-1	7.595	7.556	109.0E6	41500732	96.753	86.748

Data Path : Z:\pestpcbsrv\HPCHEM1\ECD_0\Data\P0062725\
 Data File : P0111877.D
 Signal(s) : Signal #1: ECD1A.ch Signal #2: ECD2B.ch
 Acq On : 27 Jun 2025 10:05
 Operator : YP/AJ
 Sample : AR1660CCC500
 Misc :
 ALS Vial : 3 Sample Multiplier: 1

Instrument :
 ECD_0
 ClientSampleId :

Integration File signal 1: autoint1.e
 Integration File signal 2: autoint2.e
 Quant Time: Jun 27 23:16:56 2025
 Quant Method : Z:\pestpcbsrv\HPCHEM1\ECD_0\methods\P0061125.M
 Quant Title : GC EXTRACTABLES
 QLast Update : Thu Jun 12 06:25:26 2025
 Response via : Initial Calibration
 Integrator: ChemStation

Volume Inj. : 2 µl
 Signal #1 Phase : ZB-MR1 Signal #2 Phase: ZB-MR2
 Signal #1 Info : 30Mx0.32mmx 0.50µ Signal #2 Info : 30M x 0.32mm x 0.25µm

	Compound	RT#1	RT#2	Resp#1	Resp#2	ng/ml	ng/ml
42)	L9 AR-1268-2	7.657	7.620	296.6E6	115.9E6	303.516	278.307
43)	L9 AR-1268-3	7.866	7.826	2980454	2032020	3.636	6.411 #
44)	L9 AR-1268-4	8.155	8.113	106.7E6	34211347	310.094	295.799
45)	L9 AR-1268-5	8.449	8.402	33779351	8661435	15.213	11.953

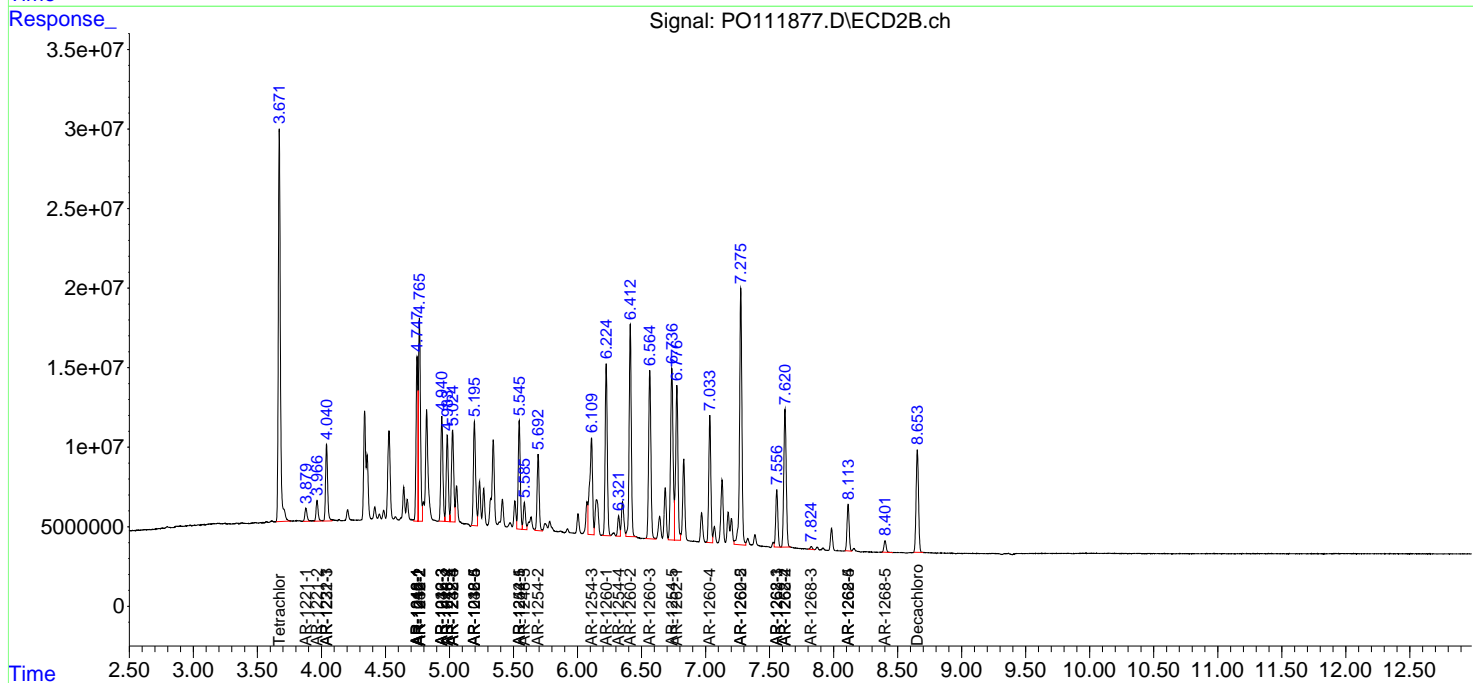
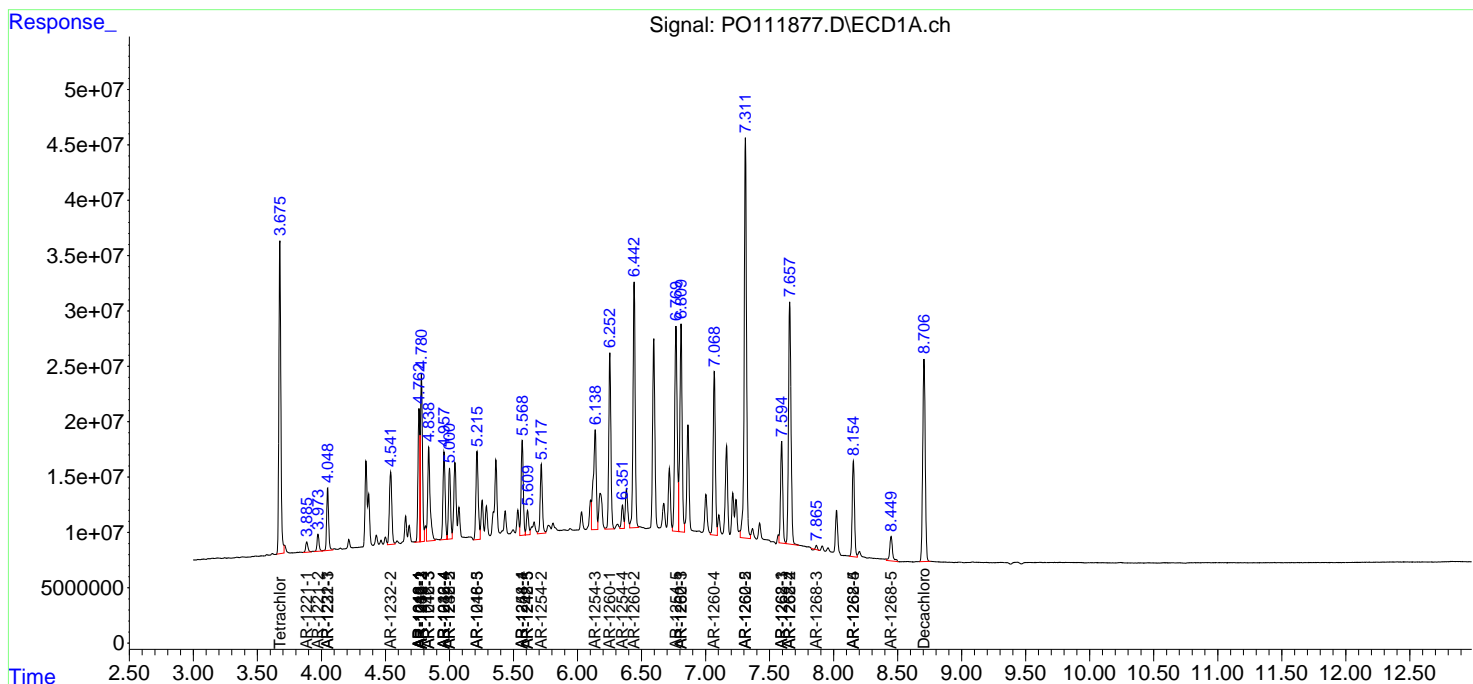
(f)=RT Delta > 1/2 Window (#)=Amounts differ by > 25% (m)=manual int.

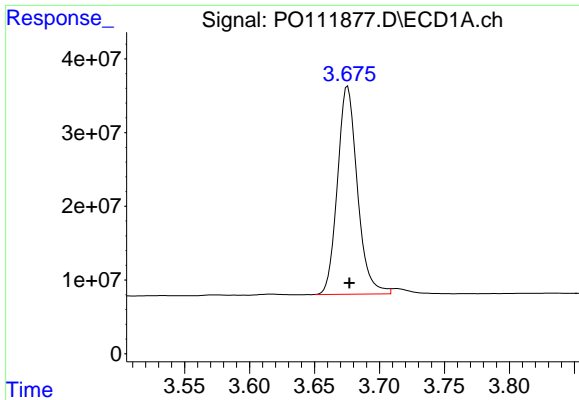
Data Path : Z:\pestpcbsrv\HPCHEM1\ECD_O\Data\P0062725\
 Data File : P0111877.D
 Signal(s) : Signal #1: ECD1A.ch Signal #2: ECD2B.ch
 Acq On : 27 Jun 2025 10:05
 Operator : YP/AJ
 Sample : AR1660CCC500
 Misc :
 ALS Vial : 3 Sample Multiplier: 1

Instrument :
 ECD_O
 ClientSampleId :

Integration File signal 1: autoint1.e
 Integration File signal 2: autoint2.e
 Quant Time: Jun 27 23:16:56 2025
 Quant Method : Z:\pestpcbsrv\HPCHEM1\ECD_O\methods\P0061125.M
 Quant Title : GC EXTRACTABLES
 QLast Update : Thu Jun 12 06:25:26 2025
 Response via : Initial Calibration
 Integrator: ChemStation

Volume Inj. : 2 µl
 Signal #1 Phase : ZB-MR1 Signal #2 Phase: ZB-MR2
 Signal #1 Info : 30Mx0.32mmx 0.50µ Signal #2 Info : 30M x 0.32mm x 0.25µm

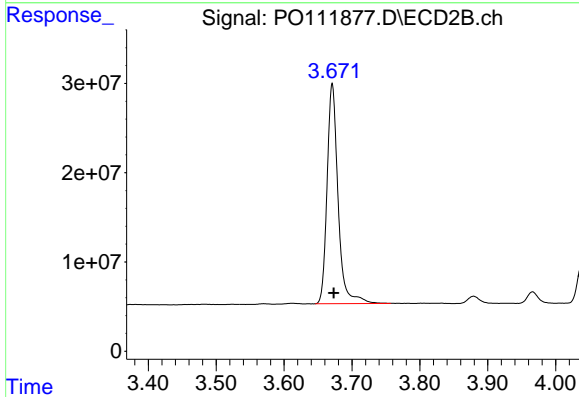




#1 Tetrachloro-m-xylene

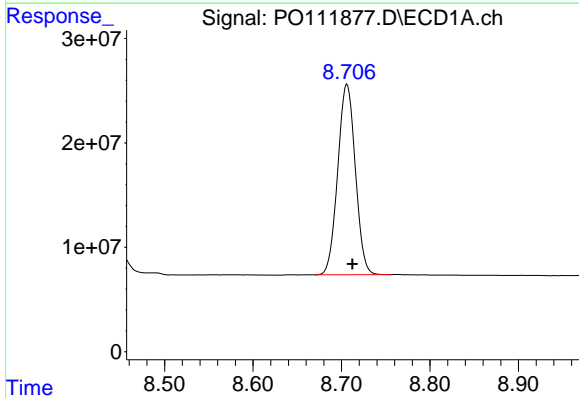
R.T.: 3.676 min
 Delta R.T.: -0.001 min
 Response: 300872454
 Conc: 52.24 ng/ml

Instrument :
 ECD_O
 ClientSampleId :



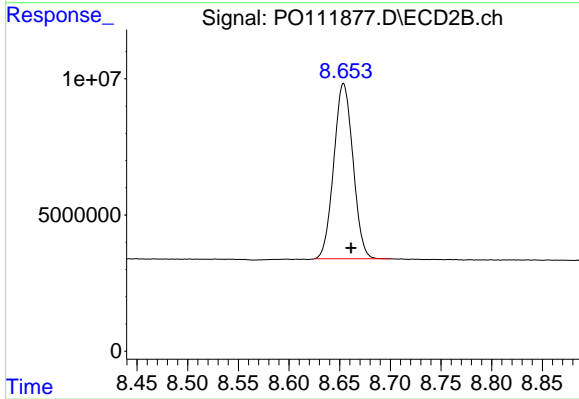
#1 Tetrachloro-m-xylene

R.T.: 3.671 min
 Delta R.T.: -0.002 min
 Response: 277949259
 Conc: 49.48 ng/ml



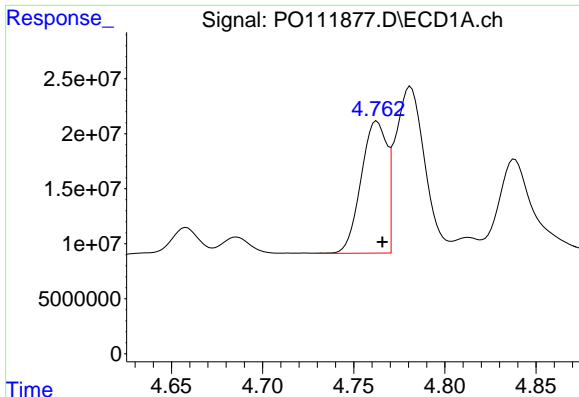
#2 Decachlorobiphenyl

R.T.: 8.706 min
 Delta R.T.: -0.006 min
 Response: 252389939
 Conc: 48.08 ng/ml



#2 Decachlorobiphenyl

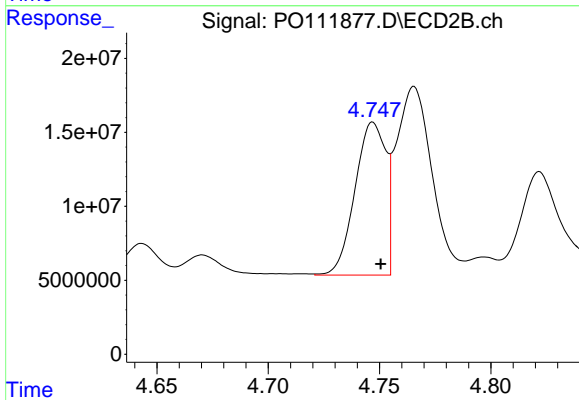
R.T.: 8.654 min
 Delta R.T.: -0.007 min
 Response: 84781540
 Conc: 47.69 ng/ml



#3 AR-1016-1

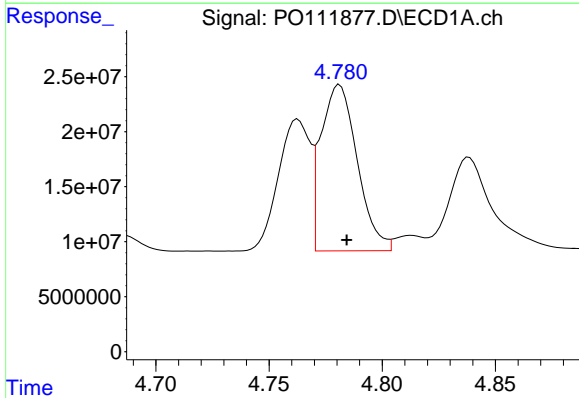
R.T.: 4.763 min
 Delta R.T.: -0.003 min
 Response: 117372045
 Conc: 492.02 ng/ml

Instrument :
 ECD_O
 ClientSampleId :



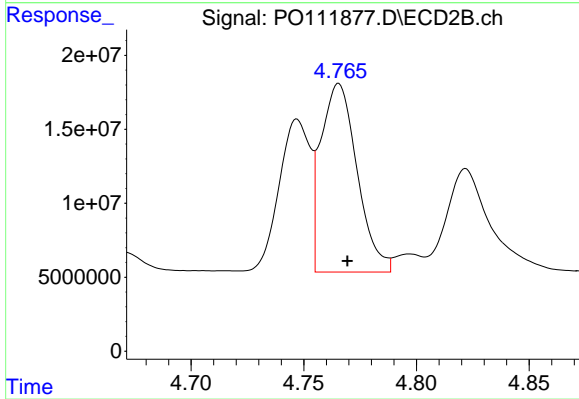
#3 AR-1016-1

R.T.: 4.747 min
 Delta R.T.: -0.004 min
 Response: 99312208
 Conc: 504.72 ng/ml



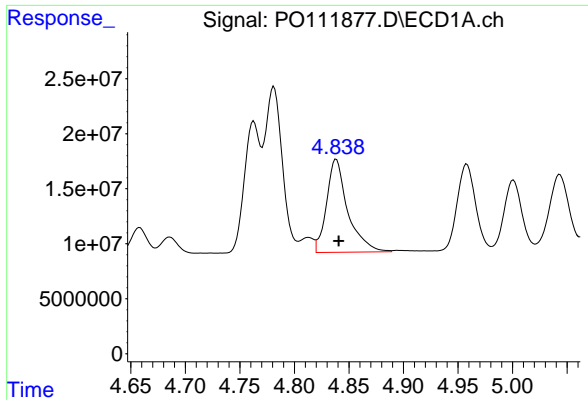
#4 AR-1016-2

R.T.: 4.781 min
 Delta R.T.: -0.003 min
 Response: 169093816
 Conc: 508.18 ng/ml



#4 AR-1016-2

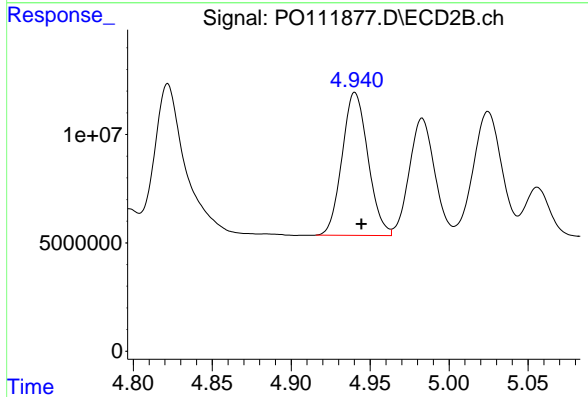
R.T.: 4.766 min
 Delta R.T.: -0.004 min
 Response: 142696718
 Conc: 500.90 ng/ml



#5 AR-1016-3

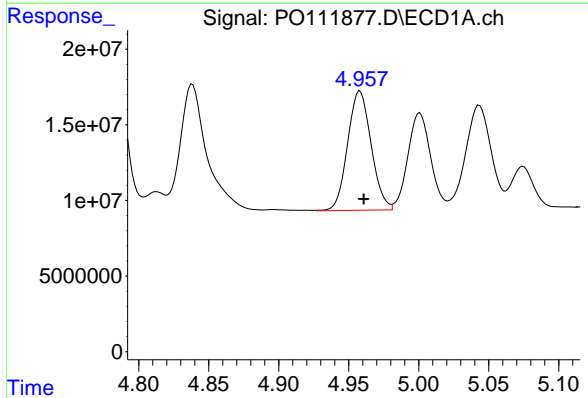
R.T.: 4.838 min
 Delta R.T.: -0.002 min
 Response: 114320833
 Conc: 496.74 ng/ml

Instrument :
 ECD_O
 ClientSampleId :



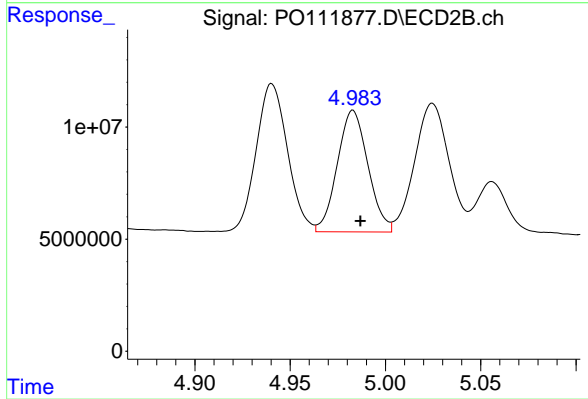
#5 AR-1016-3

R.T.: 4.940 min
 Delta R.T.: -0.004 min
 Response: 75221010
 Conc: 500.67 ng/ml



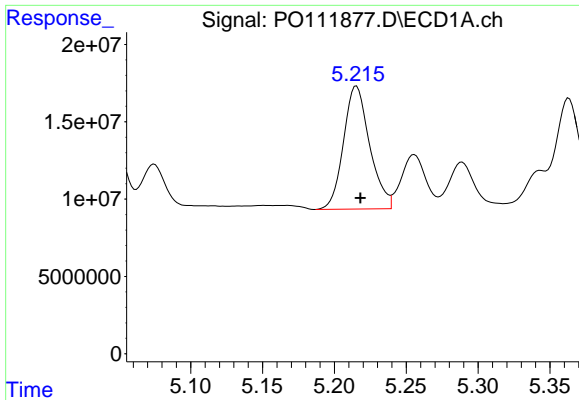
#6 AR-1016-4

R.T.: 4.958 min
 Delta R.T.: -0.003 min
 Response: 92260242
 Conc: 497.46 ng/ml



#6 AR-1016-4

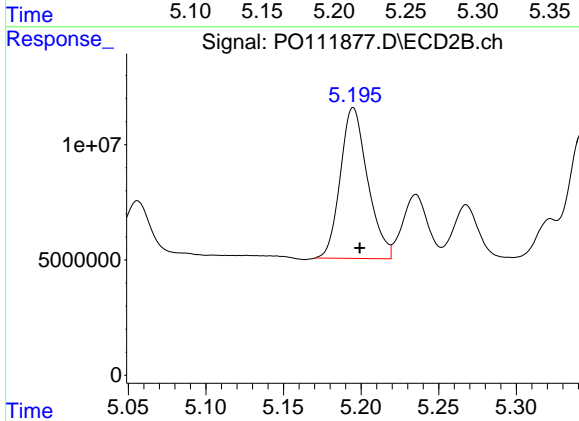
R.T.: 4.983 min
 Delta R.T.: -0.004 min
 Response: 60742597
 Conc: 498.76 ng/ml



#7 AR-1016-5

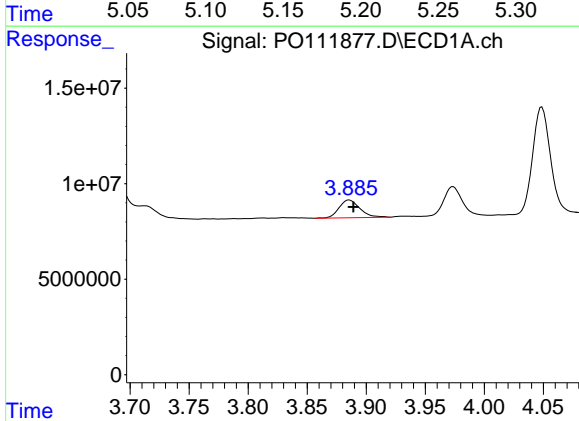
R.T.: 5.215 min
 Delta R.T.: -0.003 min
 Response: 100690401
 Conc: 539.48 ng/ml

Instrument :
 ECD_O
 ClientSampleId :



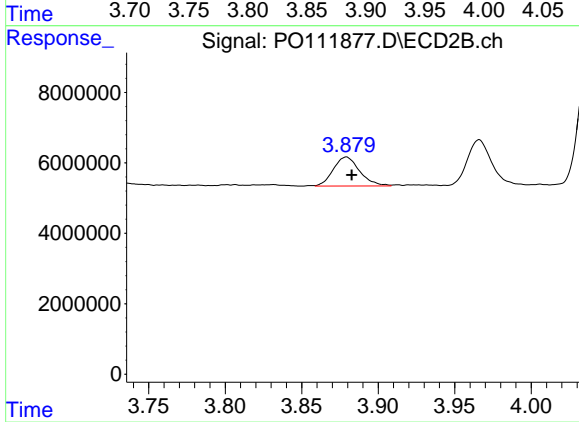
#7 AR-1016-5

R.T.: 5.195 min
 Delta R.T.: -0.004 min
 Response: 80060919
 Conc: 502.90 ng/ml



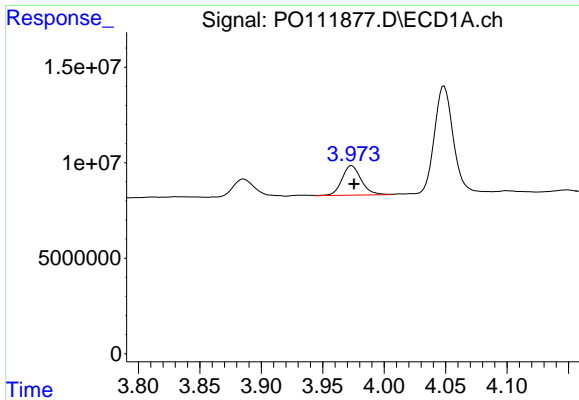
#8 AR-1221-1

R.T.: 3.886 min
 Delta R.T.: -0.004 min
 Response: 11441436
 Conc: 131.39 ng/ml



#8 AR-1221-1

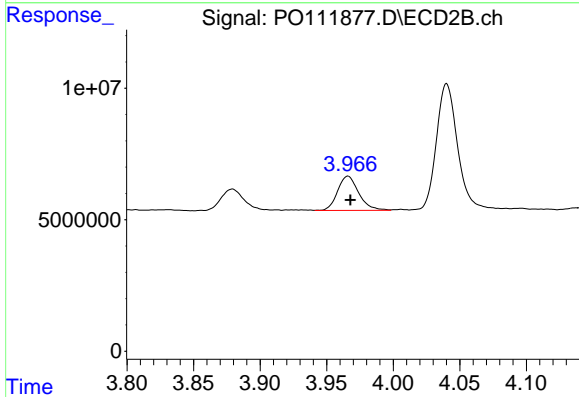
R.T.: 3.879 min
 Delta R.T.: -0.003 min
 Response: 9853596
 Conc: 131.96 ng/ml



#9 AR-1221-2

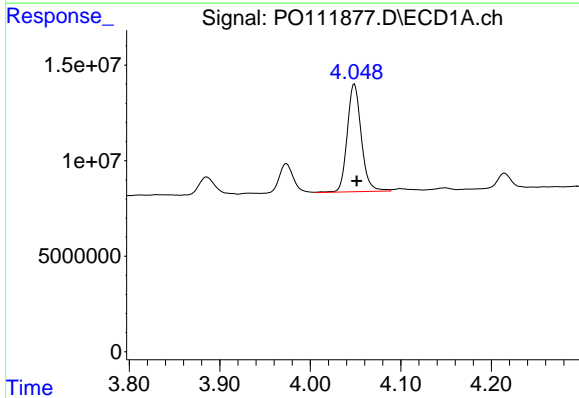
R.T.: 3.974 min
 Delta R.T.: -0.002 min
 Response: 16916358
 Conc: 263.63 ng/ml

Instrument :
 ECD_O
 ClientSampleId :



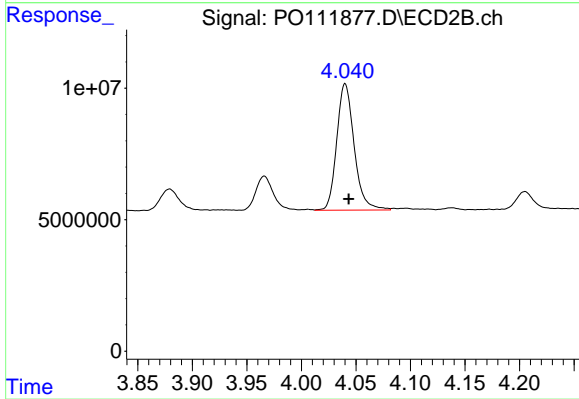
#9 AR-1221-2

R.T.: 3.966 min
 Delta R.T.: -0.002 min
 Response: 14424904
 Conc: 257.82 ng/ml



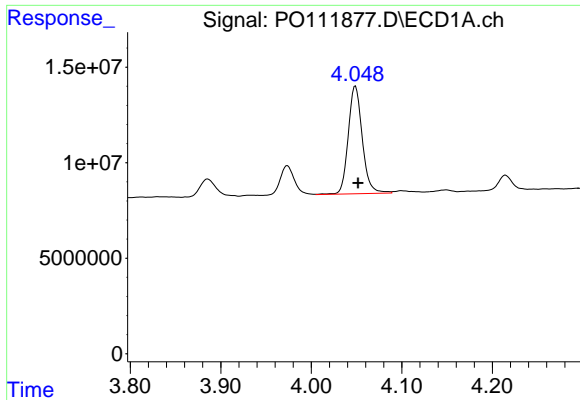
#10 AR-1221-3

R.T.: 4.049 min
 Delta R.T.: -0.002 min
 Response: 60945914
 Conc: 312.48 ng/ml



#10 AR-1221-3

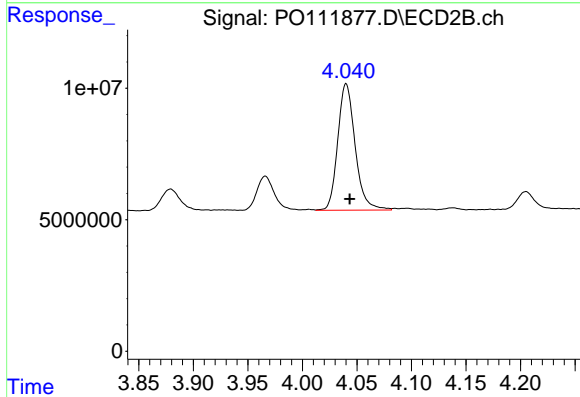
R.T.: 4.040 min
 Delta R.T.: -0.003 min
 Response: 53546918
 Conc: 311.63 ng/ml



#11 AR-1232-1

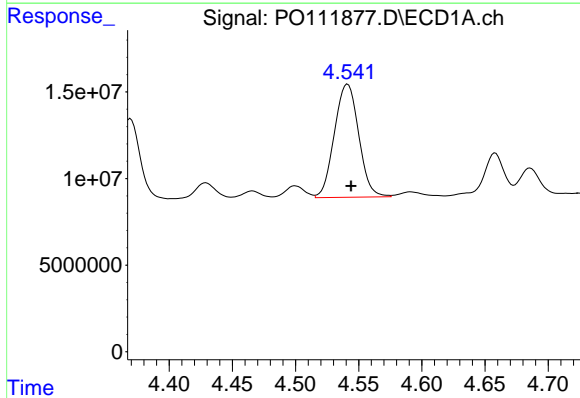
R.T.: 4.049 min
 Delta R.T.: -0.003 min
 Response: 60945914
 Conc: 401.62 ng/ml

Instrument :
 ECD_O
 ClientSampleId :



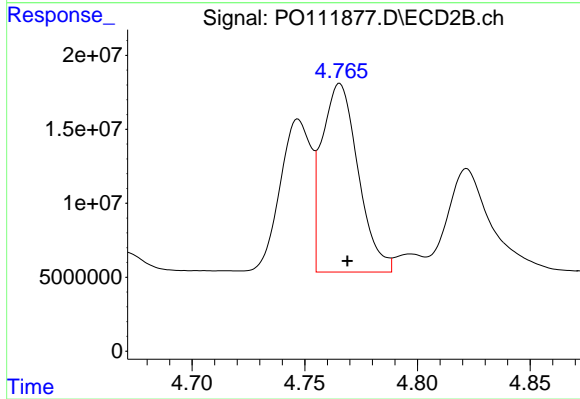
#11 AR-1232-1

R.T.: 4.040 min
 Delta R.T.: -0.003 min
 Response: 53546918
 Conc: 402.64 ng/ml



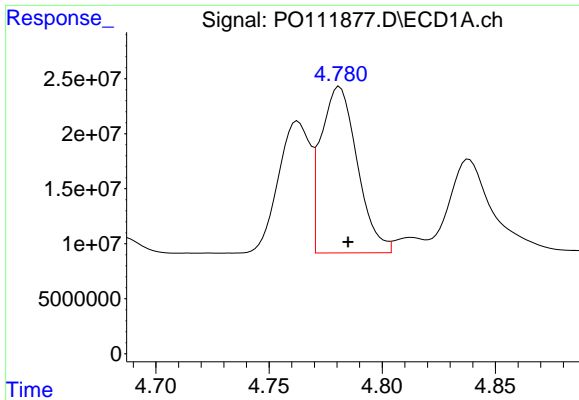
#12 AR-1232-2

R.T.: 4.541 min
 Delta R.T.: -0.003 min
 Response: 87685222
 Conc: 1016.98 ng/ml



#12 AR-1232-2

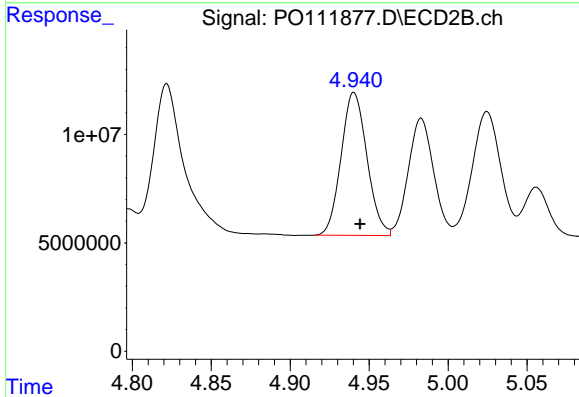
R.T.: 4.766 min
 Delta R.T.: -0.003 min
 Response: 142696718
 Conc: 1082.75 ng/ml



#13 AR-1232-3

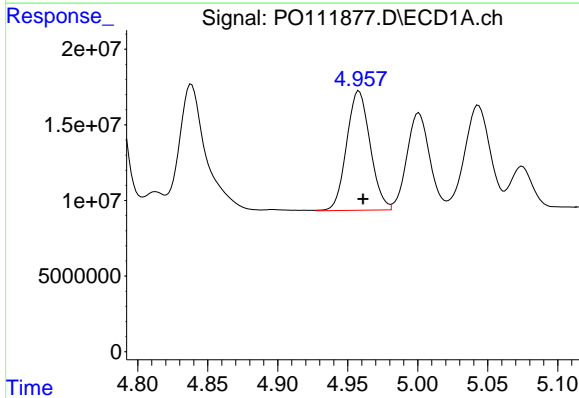
R.T.: 4.781 min
 Delta R.T.: -0.004 min
 Response: 169093816
 Conc: 1038.15 ng/ml

Instrument :
 ECD_O
 ClientSampleId :



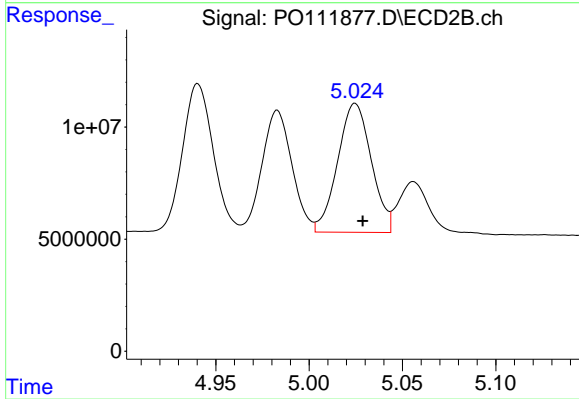
#13 AR-1232-3

R.T.: 4.940 min
 Delta R.T.: -0.004 min
 Response: 75221010
 Conc: 1088.30 ng/ml



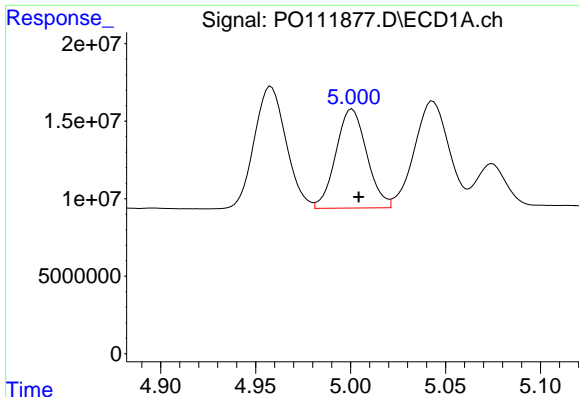
#14 AR-1232-4

R.T.: 4.958 min
 Delta R.T.: -0.003 min
 Response: 92260242
 Conc: 1060.23 ng/ml



#14 AR-1232-4

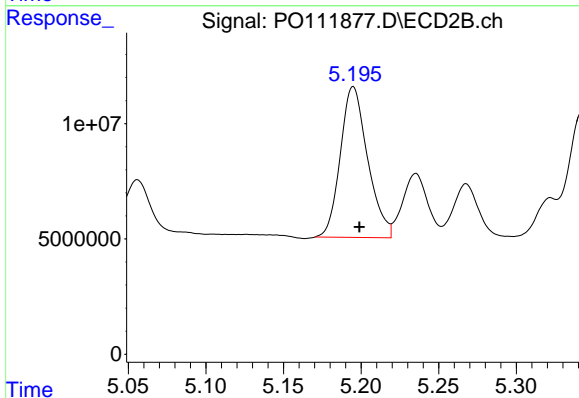
R.T.: 5.025 min
 Delta R.T.: -0.004 min
 Response: 72296824
 Conc: 1195.30 ng/ml



#15 AR-1232-5

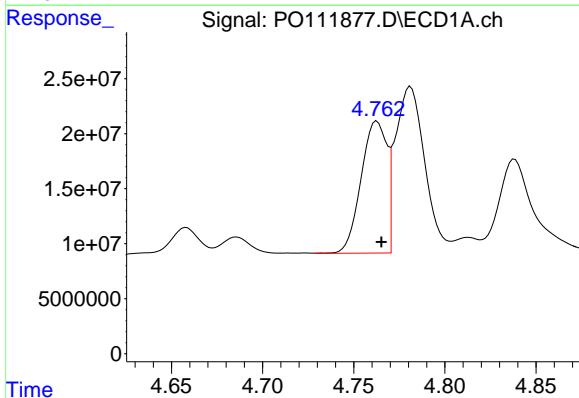
R.T.: 5.001 min
 Delta R.T.: -0.003 min
 Response: 72279756
 Conc: 1277.47 ng/ml

Instrument :
 ECD_O
 ClientSampleId :



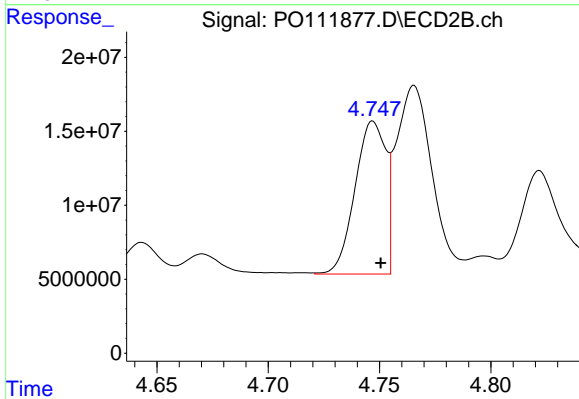
#15 AR-1232-5

R.T.: 5.195 min
 Delta R.T.: -0.004 min
 Response: 80060919
 Conc: 1205.47 ng/ml



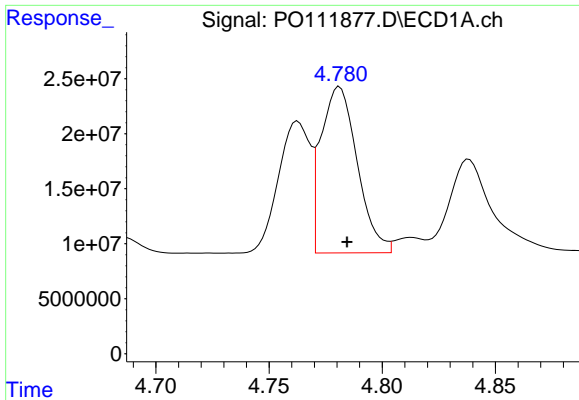
#16 AR-1242-1

R.T.: 4.763 min
 Delta R.T.: -0.002 min
 Response: 117372045
 Conc: 582.65 ng/ml



#16 AR-1242-1

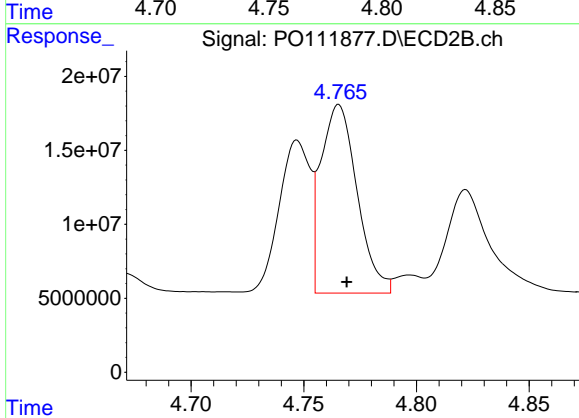
R.T.: 4.747 min
 Delta R.T.: -0.004 min
 Response: 99312208
 Conc: 610.18 ng/ml



#17 AR-1242-2

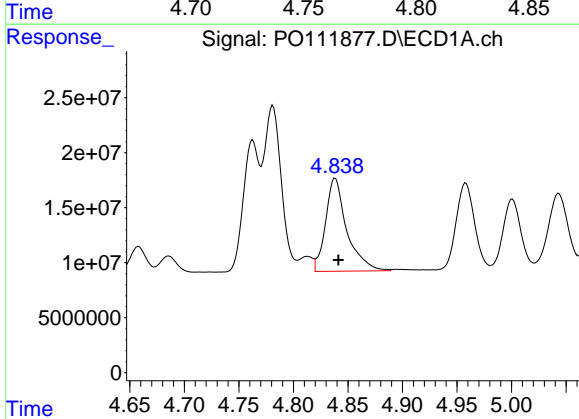
R.T.: 4.781 min
 Delta R.T.: -0.003 min
 Response: 169093816
 Conc: 600.12 ng/ml

Instrument :
 ECD_O
 ClientSampleId :



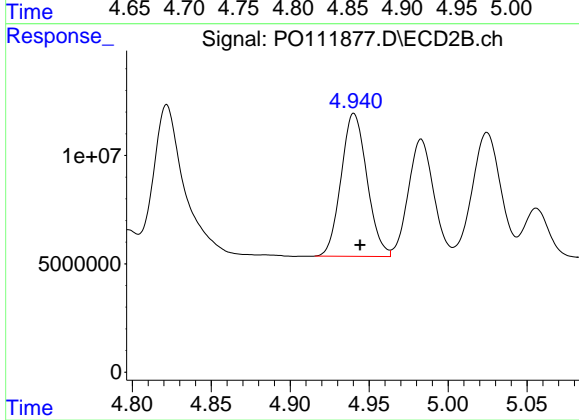
#17 AR-1242-2

R.T.: 4.766 min
 Delta R.T.: -0.004 min
 Response: 142696718
 Conc: 604.49 ng/ml



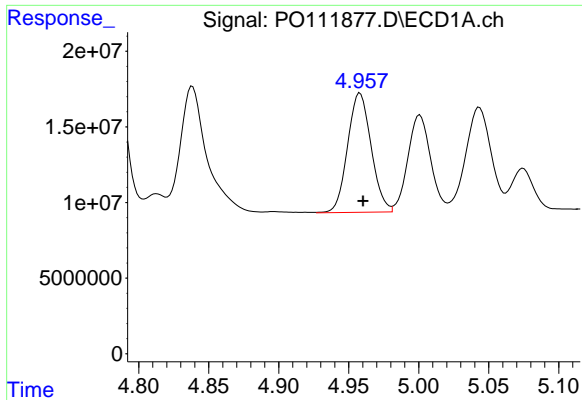
#18 AR-1242-3

R.T.: 4.838 min
 Delta R.T.: -0.003 min
 Response: 114320833
 Conc: 574.99 ng/ml



#18 AR-1242-3

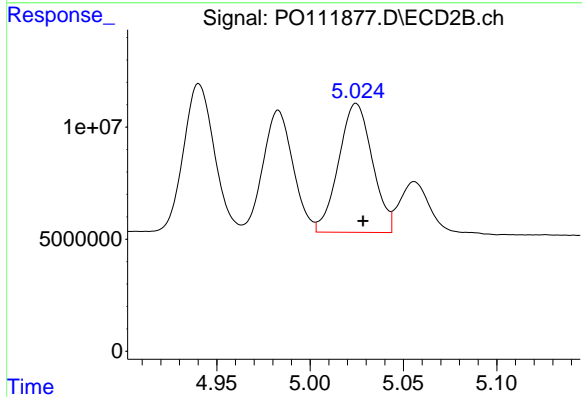
R.T.: 4.940 min
 Delta R.T.: -0.004 min
 Response: 75221010
 Conc: 598.94 ng/ml



#19 AR-1242-4

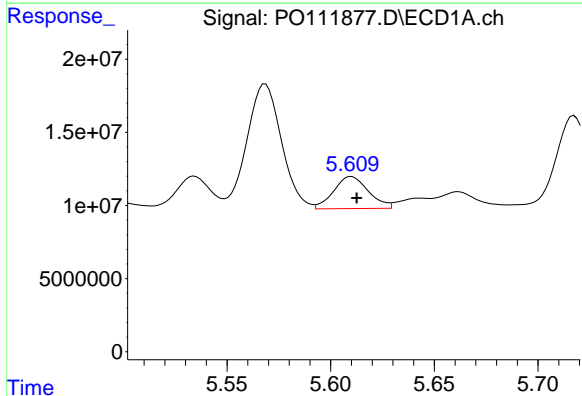
R.T.: 4.958 min
 Delta R.T.: -0.002 min
 Response: 92260242
 Conc: 583.20 ng/ml

Instrument :
 ECD_O
 ClientSampleId :



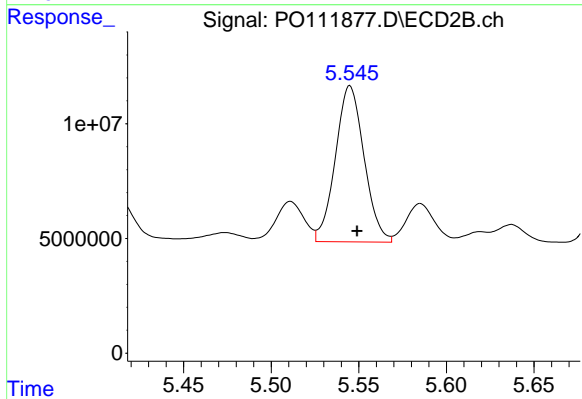
#19 AR-1242-4

R.T.: 5.025 min
 Delta R.T.: -0.004 min
 Response: 72296824
 Conc: 589.90 ng/ml



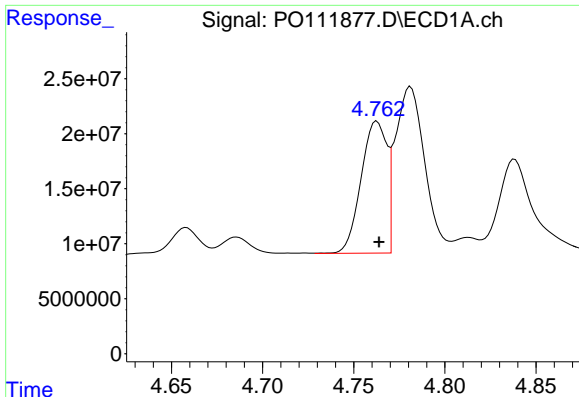
#20 AR-1242-5

R.T.: 5.610 min
 Delta R.T.: -0.002 min
 Response: 25655694
 Conc: 153.43 ng/ml



#20 AR-1242-5

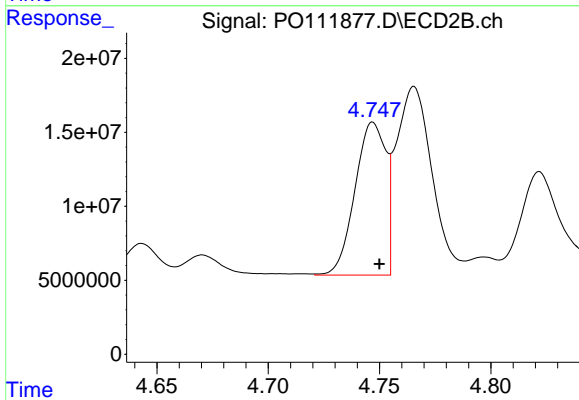
R.T.: 5.545 min
 Delta R.T.: -0.004 min
 Response: 77605844
 Conc: 517.75 ng/ml



#21 AR-1248-1

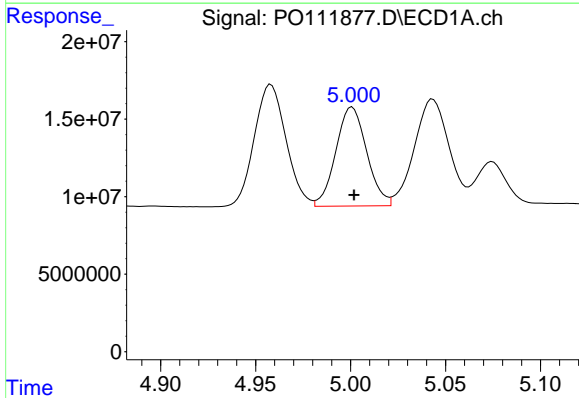
R.T.: 4.763 min
 Delta R.T.: -0.001 min
 Response: 117372045
 Conc: 727.82 ng/ml

Instrument :
 ECD_O
 ClientSampleId :



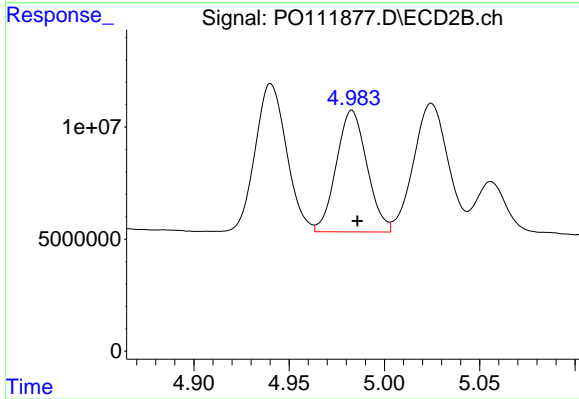
#21 AR-1248-1

R.T.: 4.747 min
 Delta R.T.: -0.003 min
 Response: 99312208
 Conc: 745.12 ng/ml



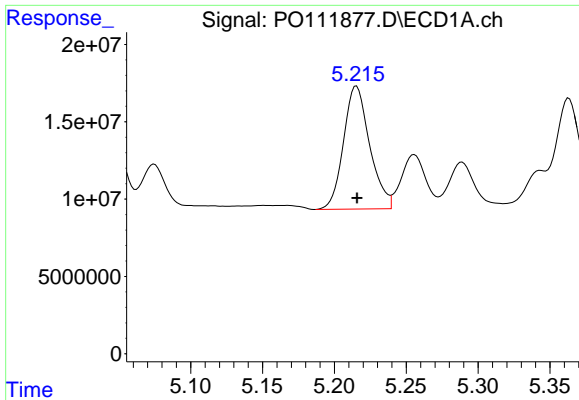
#22 AR-1248-2

R.T.: 5.001 min
 Delta R.T.: 0.000 min
 Response: 72279756
 Conc: 335.24 ng/ml



#22 AR-1248-2

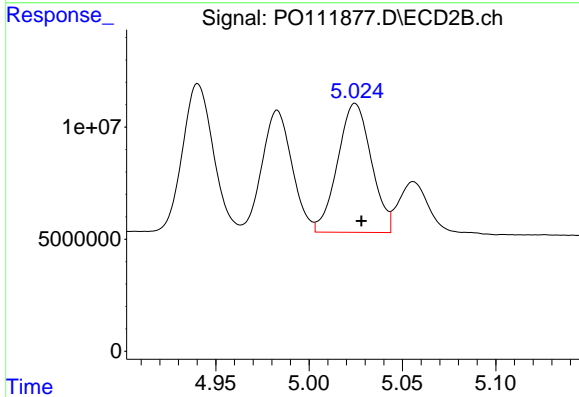
R.T.: 4.983 min
 Delta R.T.: -0.003 min
 Response: 60742597
 Conc: 340.95 ng/ml



#23 AR-1248-3

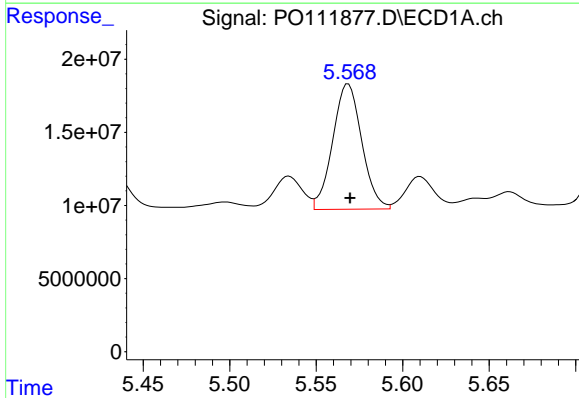
R.T.: 5.215 min
 Delta R.T.: 0.000 min
 Response: 100690401
 Conc: 373.29 ng/ml

Instrument :
 ECD_O
 ClientSampleId :



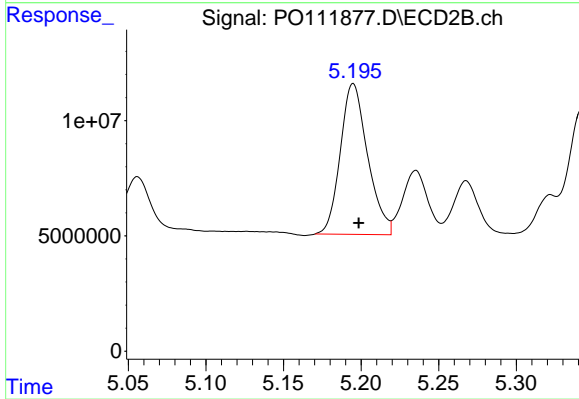
#23 AR-1248-3

R.T.: 5.025 min
 Delta R.T.: -0.003 min
 Response: 72296824
 Conc: 381.64 ng/ml



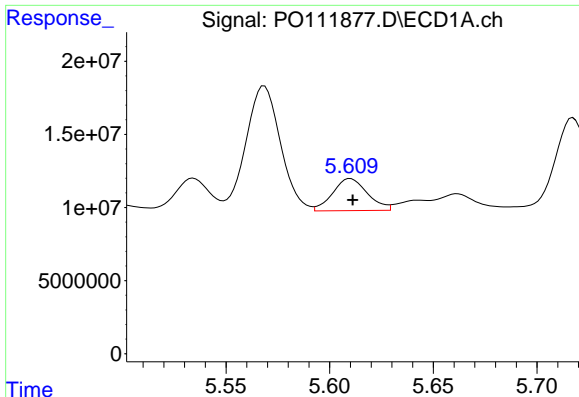
#24 AR-1248-4

R.T.: 5.569 min
 Delta R.T.: -0.001 min
 Response: 100012061
 Conc: 250.15 ng/ml



#24 AR-1248-4

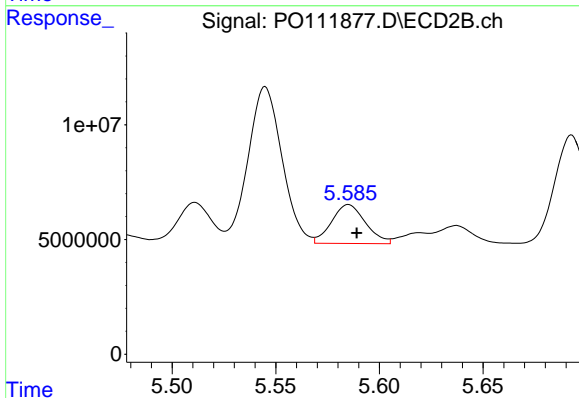
R.T.: 5.195 min
 Delta R.T.: -0.004 min
 Response: 80060919
 Conc: 350.65 ng/ml



#25 AR-1248-5

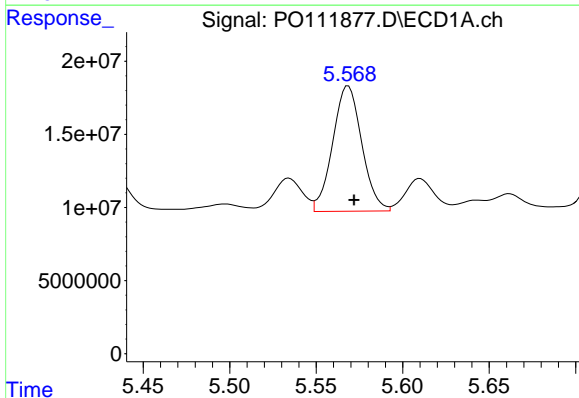
R.T.: 5.610 min
 Delta R.T.: -0.001 min
 Response: 25655694
 Conc: 91.36 ng/ml

Instrument :
 ECD_O
 ClientSampleId :



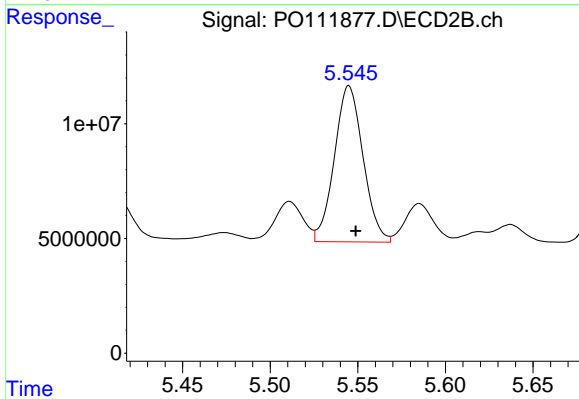
#25 AR-1248-5

R.T.: 5.585 min
 Delta R.T.: -0.004 min
 Response: 19368369
 Conc: 88.94 ng/ml



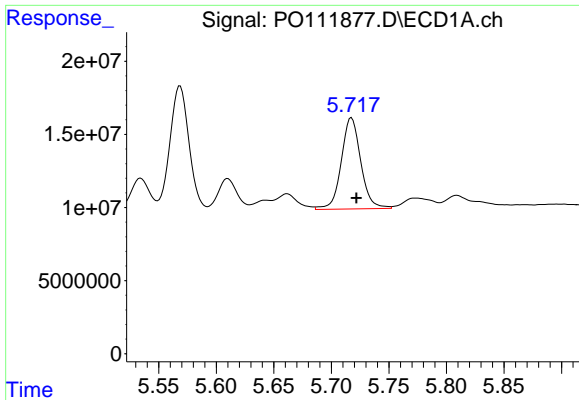
#26 AR-1254-1

R.T.: 5.569 min
 Delta R.T.: -0.003 min
 Response: 100012061
 Conc: 235.28 ng/ml



#26 AR-1254-1

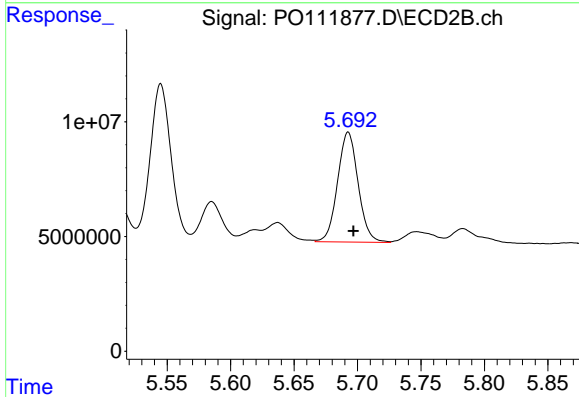
R.T.: 5.545 min
 Delta R.T.: -0.004 min
 Response: 77605844
 Conc: 240.26 ng/ml



#27 AR-1254-2

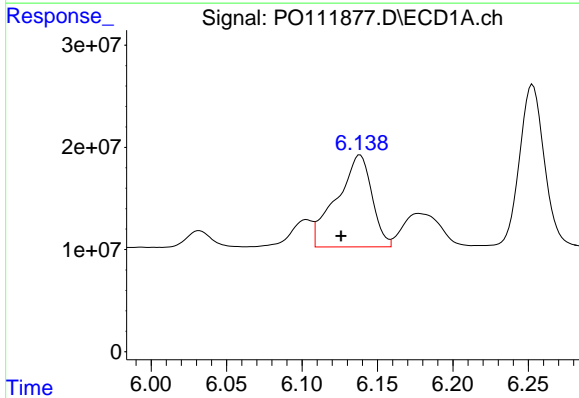
R.T.: 5.717 min
 Delta R.T.: -0.004 min
 Response: 73868205
 Conc: 194.63 ng/ml

Instrument :
 ECD_O
 ClientSampleId :



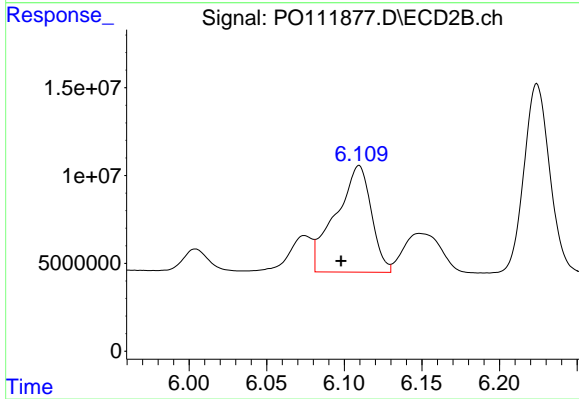
#27 AR-1254-2

R.T.: 5.693 min
 Delta R.T.: -0.004 min
 Response: 54068623
 Conc: 193.58 ng/ml



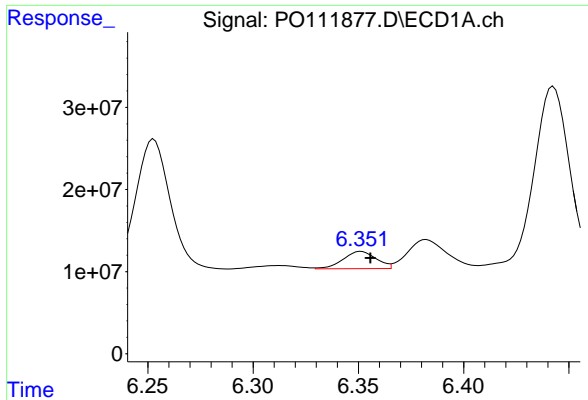
#28 AR-1254-3

R.T.: 6.138 min
 Delta R.T.: 0.013 min
 Response: 145979875
 Conc: 255.50 ng/ml



#28 AR-1254-3

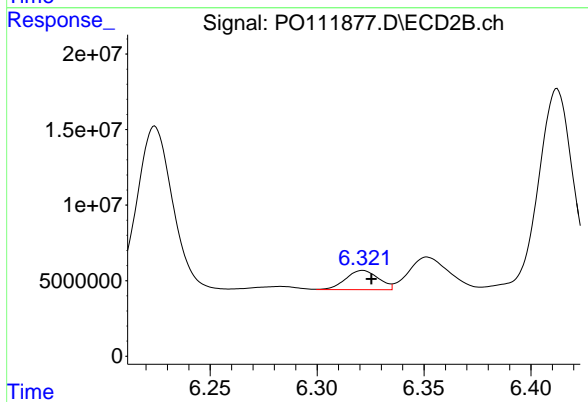
R.T.: 6.109 min
 Delta R.T.: 0.012 min
 Response: 96478287
 Conc: 230.23 ng/ml



#29 AR-1254-4

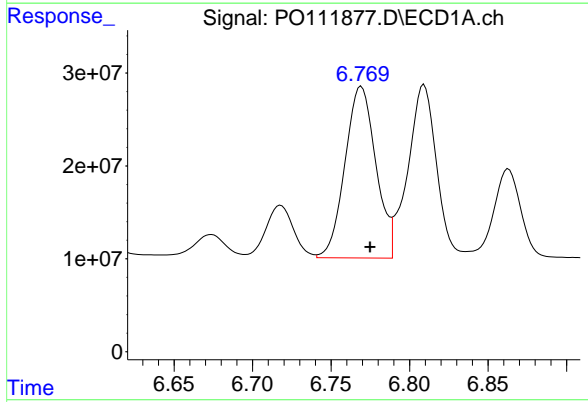
R.T.: 6.351 min
 Delta R.T.: -0.004 min
 Response: 22990581
 Conc: 65.90 ng/ml

Instrument :
 ECD_O
 ClientSampleId :



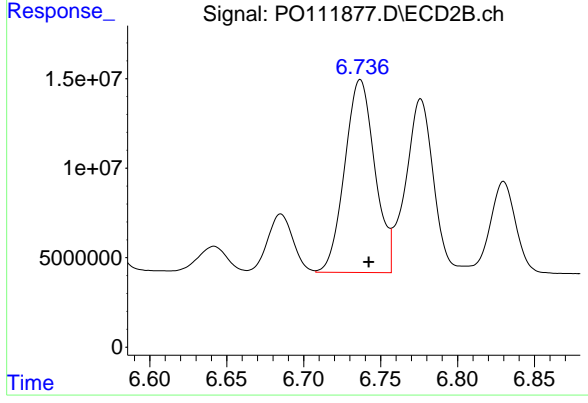
#29 AR-1254-4

R.T.: 6.321 min
 Delta R.T.: -0.004 min
 Response: 13477060
 Conc: 59.16 ng/ml



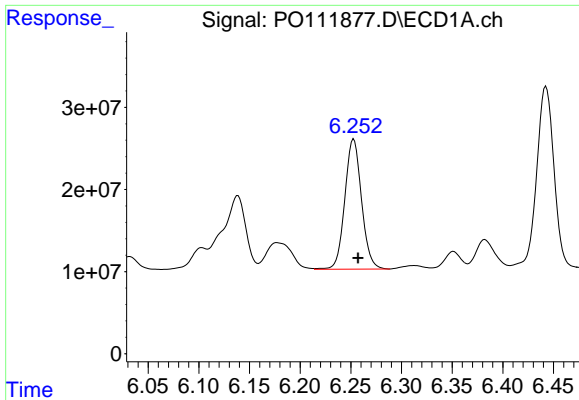
#30 AR-1254-5

R.T.: 6.769 min
 Delta R.T.: -0.006 min
 Response: 252732532
 Conc: 493.49 ng/ml



#30 AR-1254-5

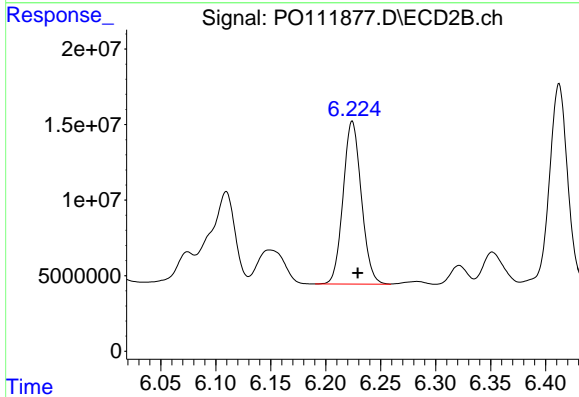
R.T.: 6.737 min
 Delta R.T.: -0.006 min
 Response: 146610255
 Conc: 450.29 ng/ml



#31 AR-1260-1

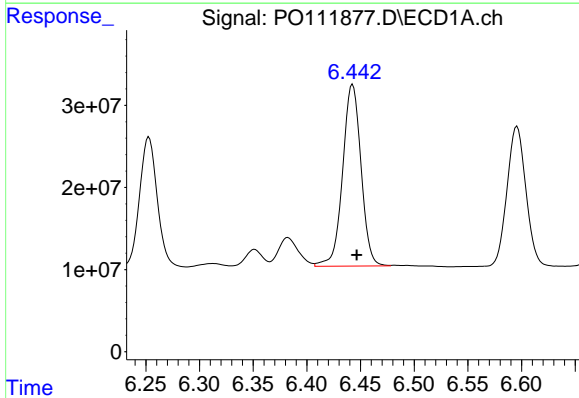
R.T.: 6.253 min
 Delta R.T.: -0.004 min
 Response: 181801055
 Conc: 511.65 ng/ml

Instrument :
 ECD_O
 ClientSampleId :



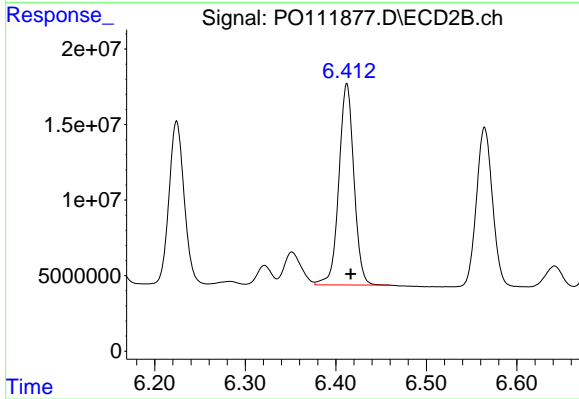
#31 AR-1260-1

R.T.: 6.224 min
 Delta R.T.: -0.005 min
 Response: 124551629
 Conc: 496.39 ng/ml



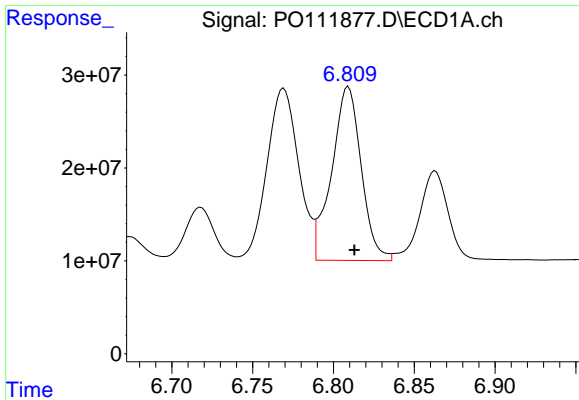
#32 AR-1260-2

R.T.: 6.443 min
 Delta R.T.: -0.004 min
 Response: 263897758
 Conc: 558.55 ng/ml



#32 AR-1260-2

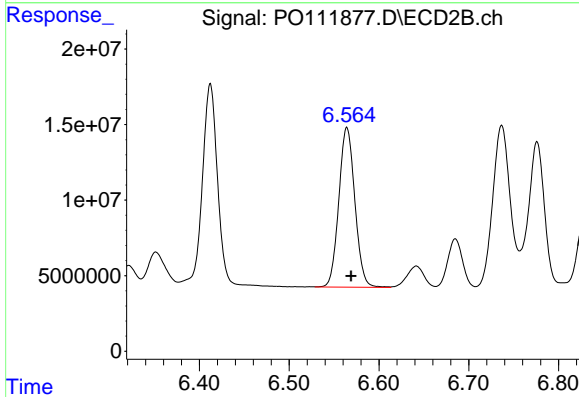
R.T.: 6.412 min
 Delta R.T.: -0.004 min
 Response: 153599741
 Conc: 522.42 ng/ml



#33 AR-1260-3

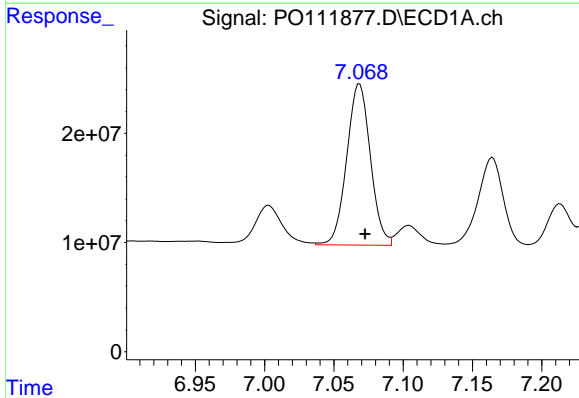
R.T.: 6.809 min
 Delta R.T.: -0.004 min
 Response: 237953013
 Conc: 560.32 ng/ml

Instrument :
 ECD_O
 ClientSampleId :



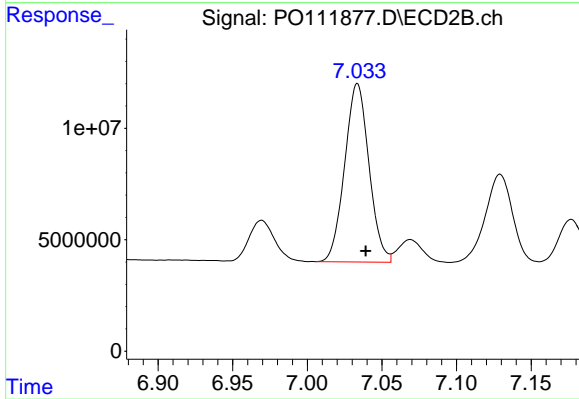
#33 AR-1260-3

R.T.: 6.564 min
 Delta R.T.: -0.005 min
 Response: 130968750
 Conc: 490.19 ng/ml



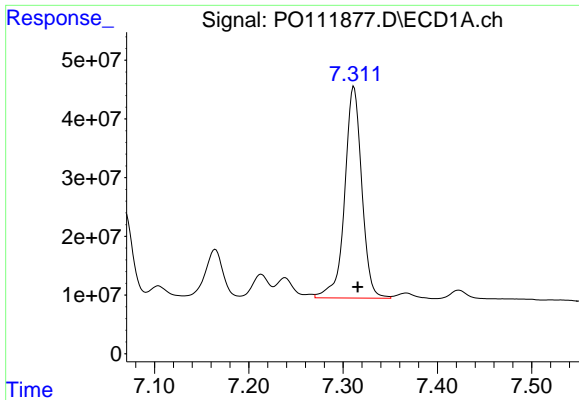
#34 AR-1260-4

R.T.: 7.069 min
 Delta R.T.: -0.004 min
 Response: 175757100
 Conc: 558.94 ng/ml



#34 AR-1260-4

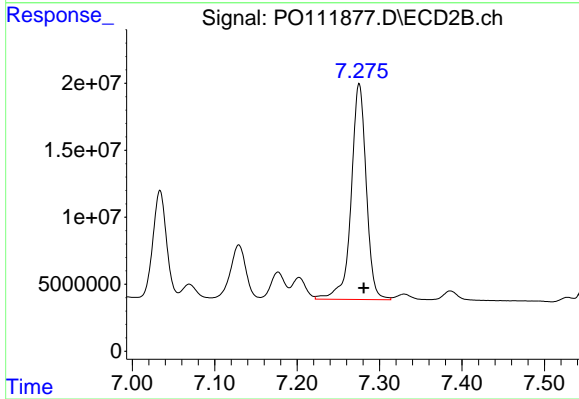
R.T.: 7.034 min
 Delta R.T.: -0.006 min
 Response: 90669155
 Conc: 476.96 ng/ml



#35 AR-1260-5

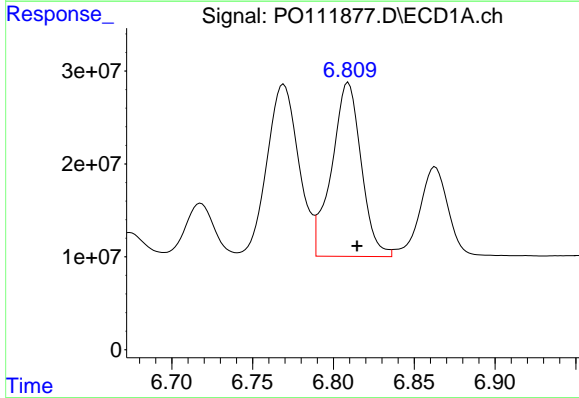
R.T.: 7.311 min
Delta R.T.: -0.004 min
Response: 454603127
Conc: 551.89 ng/ml

Instrument :
ECD_O
ClientSampleId :



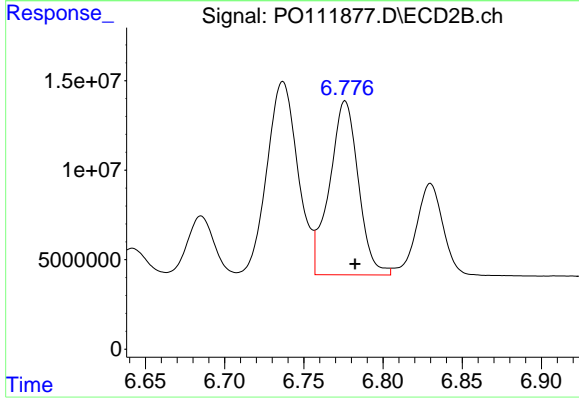
#35 AR-1260-5

R.T.: 7.275 min
Delta R.T.: -0.005 min
Response: 205087820
Conc: 482.54 ng/ml



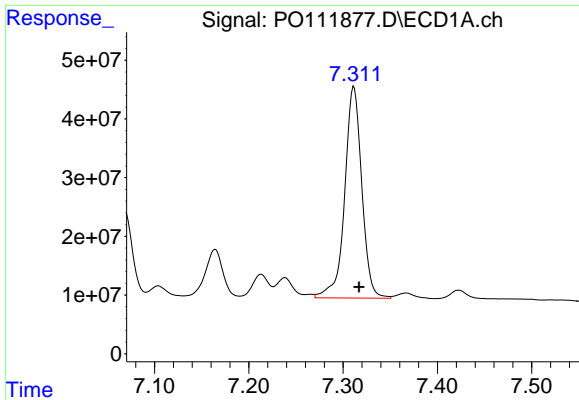
#36 AR-1262-1

R.T.: 6.809 min
Delta R.T.: -0.005 min
Response: 237953013
Conc: 390.17 ng/ml



#36 AR-1262-1

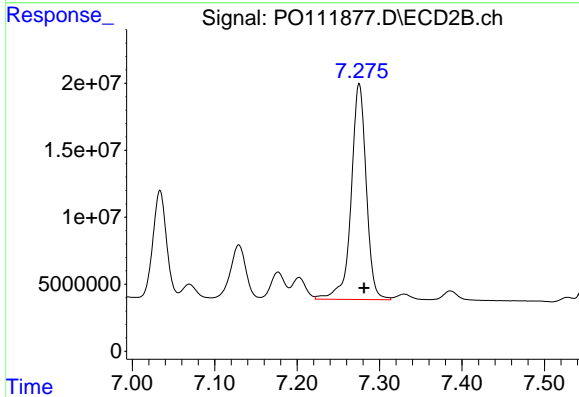
R.T.: 6.776 min
Delta R.T.: -0.006 min
Response: 123173583
Conc: 364.78 ng/ml



#37 AR-1262-2

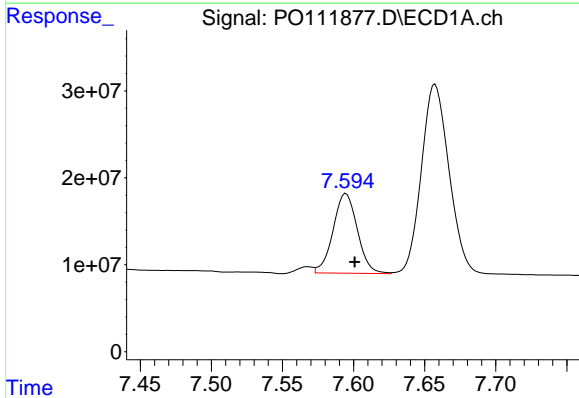
R.T.: 7.311 min
 Delta R.T.: -0.005 min
 Response: 454603127
 Conc: 482.90 ng/ml

Instrument :
 ECD_O
 ClientSampleId :



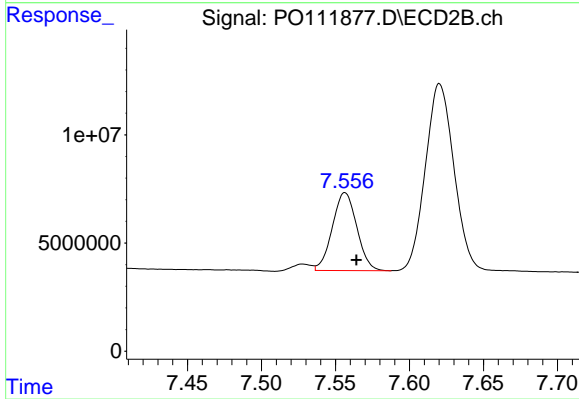
#37 AR-1262-2

R.T.: 7.275 min
 Delta R.T.: -0.006 min
 Response: 205087820
 Conc: 440.32 ng/ml



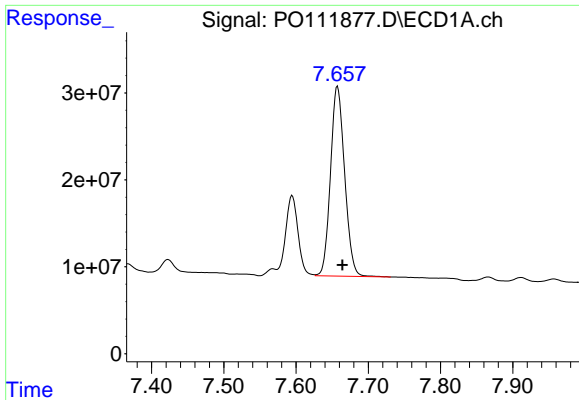
#38 AR-1262-3

R.T.: 7.595 min
 Delta R.T.: -0.006 min
 Response: 108999717
 Conc: 274.82 ng/ml



#38 AR-1262-3

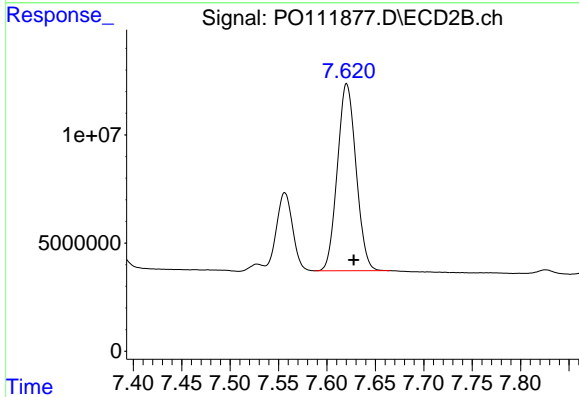
R.T.: 7.556 min
 Delta R.T.: -0.008 min
 Response: 41500732
 Conc: 249.58 ng/ml



#39 AR-1262-4

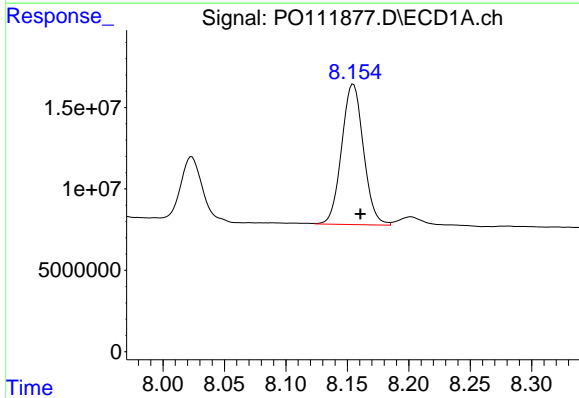
R.T.: 7.657 min
 Delta R.T.: -0.007 min
 Response: 296605300
 Conc: 451.45 ng/ml

Instrument :
 ECD_O
 ClientSampleId :



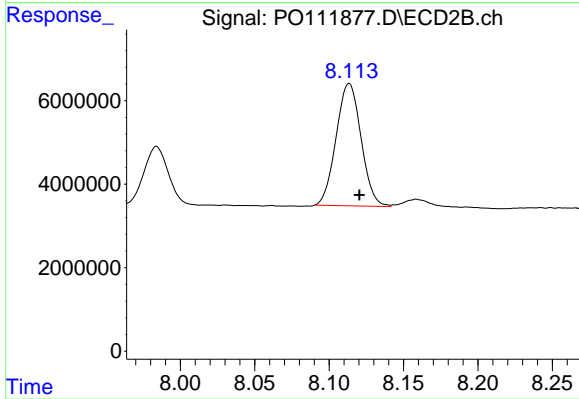
#39 AR-1262-4

R.T.: 7.620 min
 Delta R.T.: -0.007 min
 Response: 115915492
 Conc: 418.36 ng/ml



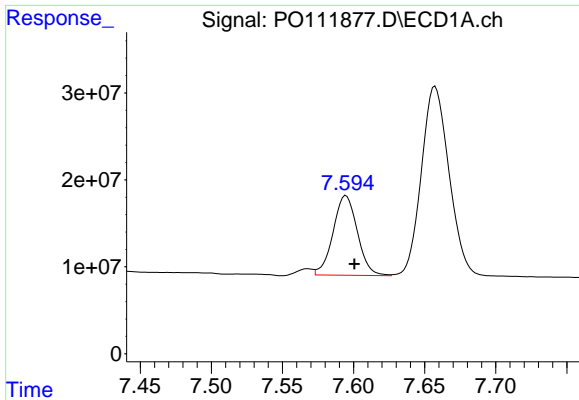
#40 AR-1262-5

R.T.: 8.155 min
 Delta R.T.: -0.006 min
 Response: 106666905
 Conc: 350.11 ng/ml



#40 AR-1262-5

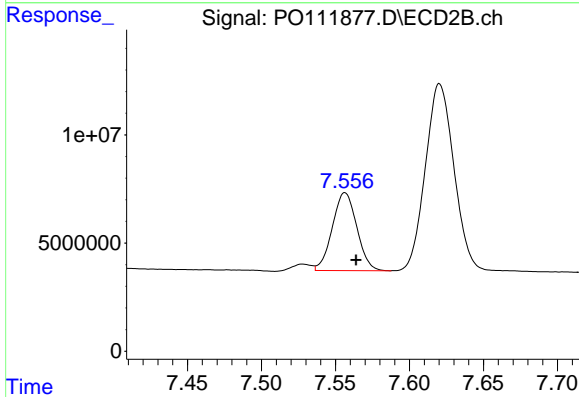
R.T.: 8.113 min
 Delta R.T.: -0.007 min
 Response: 34211347
 Conc: 336.66 ng/ml



#41 AR-1268-1

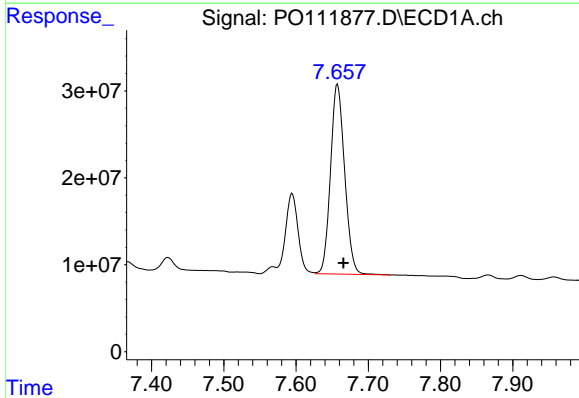
R.T.: 7.595 min
 Delta R.T.: -0.006 min
 Response: 108999717
 Conc: 96.75 ng/ml

Instrument :
 ECD_O
 ClientSampleId :



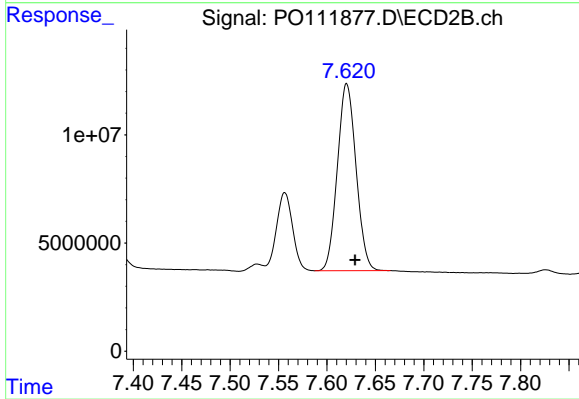
#41 AR-1268-1

R.T.: 7.556 min
 Delta R.T.: -0.007 min
 Response: 41500732
 Conc: 86.75 ng/ml



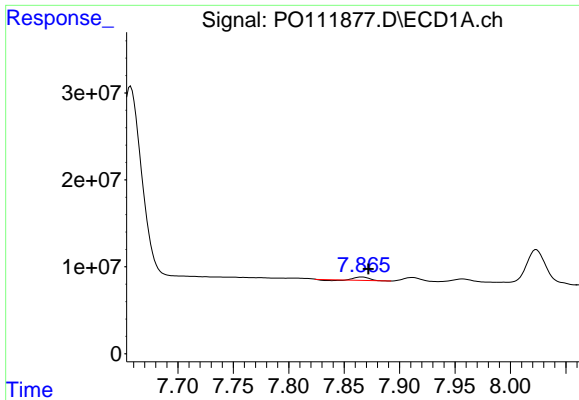
#42 AR-1268-2

R.T.: 7.657 min
 Delta R.T.: -0.008 min
 Response: 296605300
 Conc: 303.52 ng/ml



#42 AR-1268-2

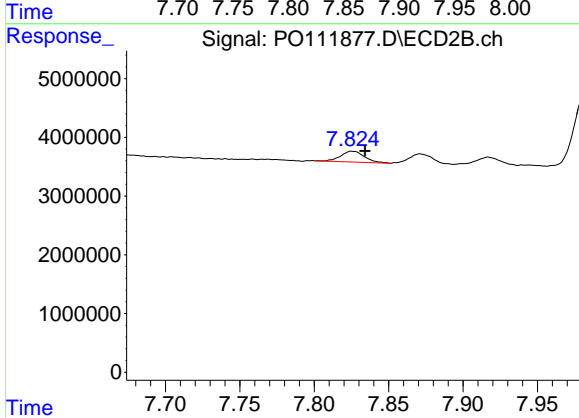
R.T.: 7.620 min
 Delta R.T.: -0.009 min
 Response: 115915492
 Conc: 278.31 ng/ml



#43 AR-1268-3

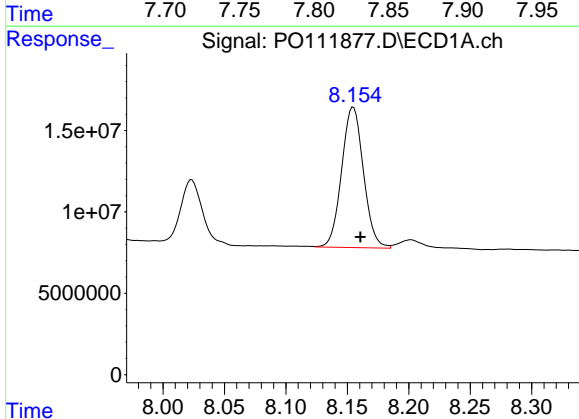
R.T.: 7.866 min
 Delta R.T.: -0.006 min
 Response: 2980454
 Conc: 3.64 ng/ml

Instrument :
 ECD_O
 ClientSampleId :



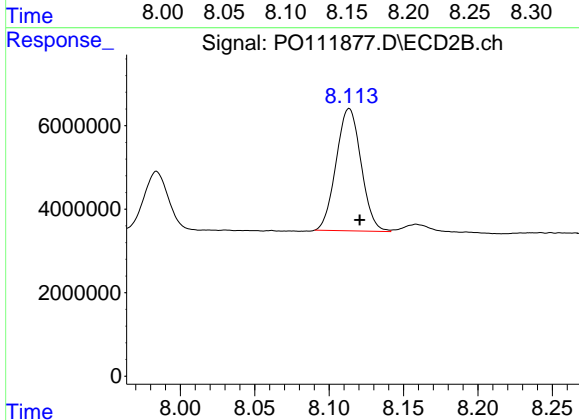
#43 AR-1268-3

R.T.: 7.826 min
 Delta R.T.: -0.009 min
 Response: 2032020
 Conc: 6.41 ng/ml



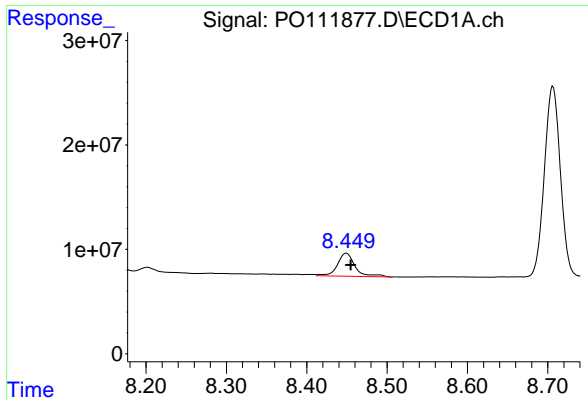
#44 AR-1268-4

R.T.: 8.155 min
 Delta R.T.: -0.006 min
 Response: 106666905
 Conc: 310.09 ng/ml



#44 AR-1268-4

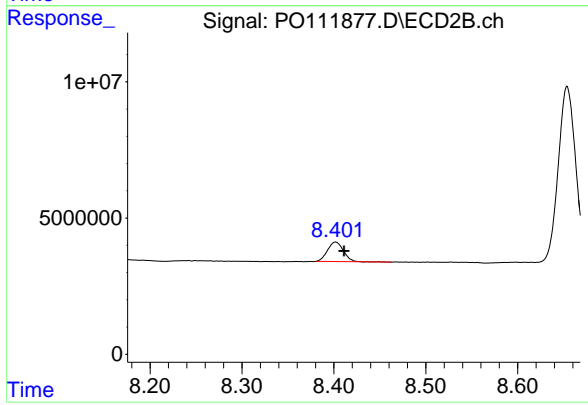
R.T.: 8.113 min
 Delta R.T.: -0.007 min
 Response: 34211347
 Conc: 295.80 ng/ml



#45 AR-1268-5

R.T.: 8.449 min
Delta R.T.: -0.005 min
Response: 33779351
Conc: 15.21 ng/ml

Instrument :
ECD_O
ClientSampleId :



#45 AR-1268-5

R.T.: 8.402 min
Delta R.T.: -0.009 min
Response: 8661435
Conc: 11.95 ng/ml