

Data Path : Z:\pestpcbsrv\HPCHEM1\ECD_O\Data\P0062824\
 Data File : P0104559.D
 Signal(s) : Signal #1: ECD1A.ch Signal #2: ECD2B.ch
 Acq On : 28 Jun 2024 20:30
 Operator : YP/AJ
 Sample : PB161812BS
 Misc :
 ALS Vial : 23 Sample Multiplier: 1

Instrument :
 ECD_O
ClientSampleId :
 PB161812BS

Integration File signal 1: autoint1.e
 Integration File signal 2: autoint2.e
 Quant Time: Jun 29 00:43:14 2024
 Quant Method : Z:\pestpcbsrv\HPCHEM1\ECD_O\methods\P0062024.M
 Quant Title : GC EXTRACTABLES
 QLast Update : Fri Jun 21 04:29:14 2024
 Response via : Initial Calibration
 Integrator: ChemStation

Volume Inj. : 2 µl
 Signal #1 Phase : ZB-MR1 Signal #2 Phase: ZB-MR2
 Signal #1 Info : 30Mx0.32mmx 0.50µ Signal #2 Info : 30M x 0.32mm x 0.25µm

Compound	RT#1	RT#2	Resp#1	Resp#2	ng/ml	ng/ml

System Monitoring Compounds						
1) SA Tetrachlo...	4.406	3.546	166.1E6	25809974	20.909	17.196
2) SA Decachlor...	10.116	8.469	109.9E6	62707466	20.456m	19.539
Target Compounds						
3) L1 AR-1016-1	5.566	4.605	120.9E6	15865268	447.441	367.130
4) L1 AR-1016-2	5.589	4.623	169.1E6	27971742	449.686	385.271
5) L1 AR-1016-3	5.651	4.795	104.3E6	15912121	430.281	394.010
6) L1 AR-1016-4	5.749	4.837	86078908	8024499	443.098	345.242
7) L1 AR-1016-5	6.043	5.046	81875484	12975234	425.827	358.804
31) L7 AR-1260-1	7.166	6.066	150.1E6	24892535	440.674	354.954m
32) L7 AR-1260-2	7.422	6.253	176.3E6	36660795	451.700	391.059
33) L7 AR-1260-3	7.781	6.404	100.2E6	33678361	346.243	368.691
34) L7 AR-1260-4	8.006	6.873	122.9E6	29910193	383.107	368.743
35) L7 AR-1260-5	8.323	7.113	232.6E6	125.0E6	369.886	443.893

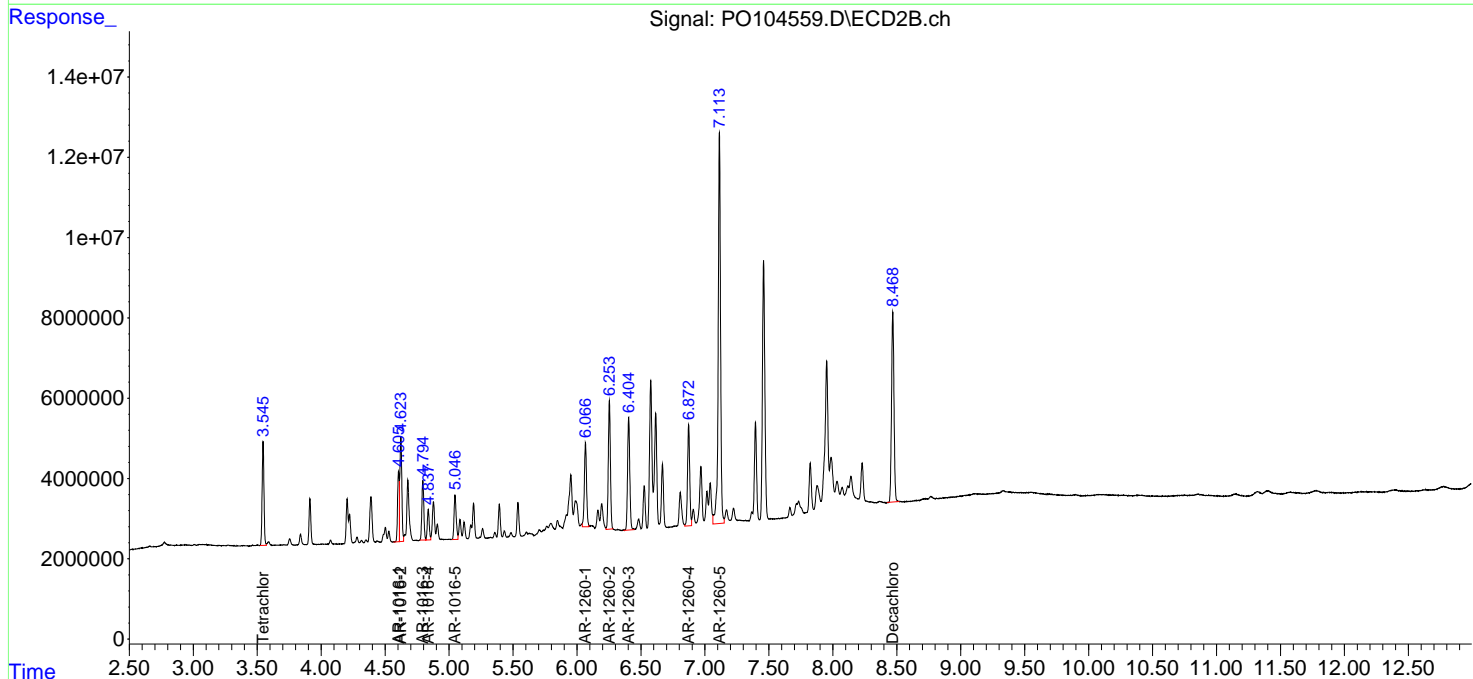
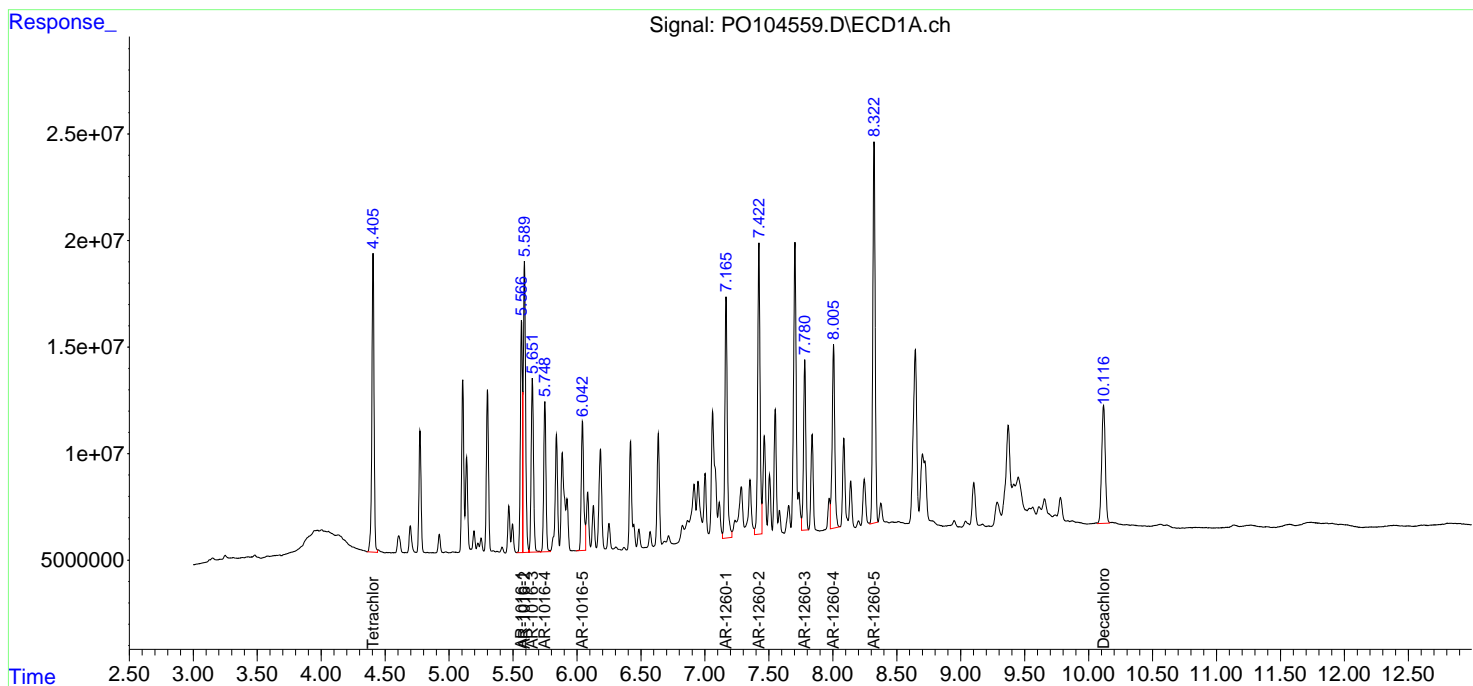
(f)=RT Delta > 1/2 Window (#)=Amounts differ by > 25% (m)=manual int.

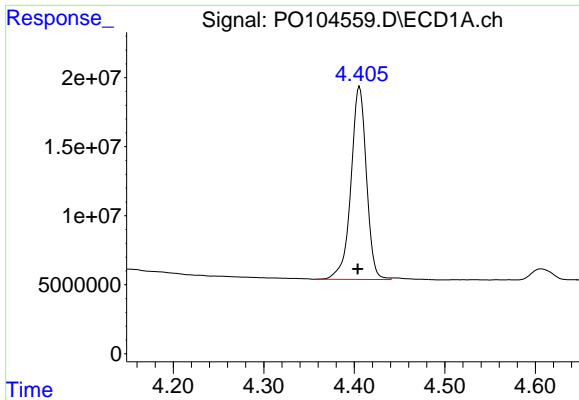
Data Path : Z:\pestpcbsrv\HPCHEM1\ECD_O\Data\PO062824\
 Data File : PO104559.D
 Signal(s) : Signal #1: ECD1A.ch Signal #2: ECD2B.ch
 Acq On : 28 Jun 2024 20:30
 Operator : YP/AJ
 Sample : PB161812BS
 Misc :
 ALS Vial : 23 Sample Multiplier: 1

Instrument :
 ECD_O
 ClientSampleId :
 PB161812BS

Integration File signal 1: autoint1.e
 Integration File signal 2: autoint2.e
 Quant Time: Jun 29 00:43:14 2024
 Quant Method : Z:\pestpcbsrv\HPCHEM1\ECD_O\methods\PO062024.M
 Quant Title : GC EXTRACTABLES
 QLast Update : Fri Jun 21 04:29:14 2024
 Response via : Initial Calibration
 Integrator: ChemStation

Volume Inj. : 2 µl
 Signal #1 Phase : ZB-MR1 Signal #2 Phase: ZB-MR2
 Signal #1 Info : 30Mx0.32mmx 0.50µ Signal #2 Info : 30M x 0.32mm x 0.25µm

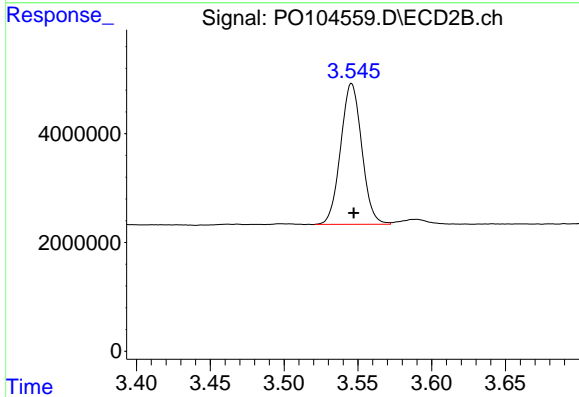




#1 Tetrachloro-m-xylene

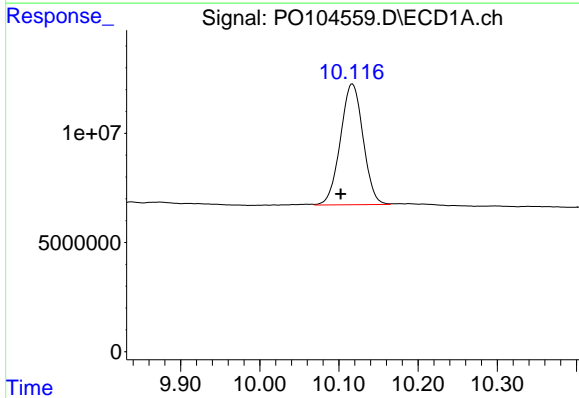
R.T.: 4.406 min
 Delta R.T.: 0.002 min
 Response: 166095070
 Conc: 20.91 ng/ml

Instrument :
 ECD_O
 ClientSampleId :
 PB161812BS



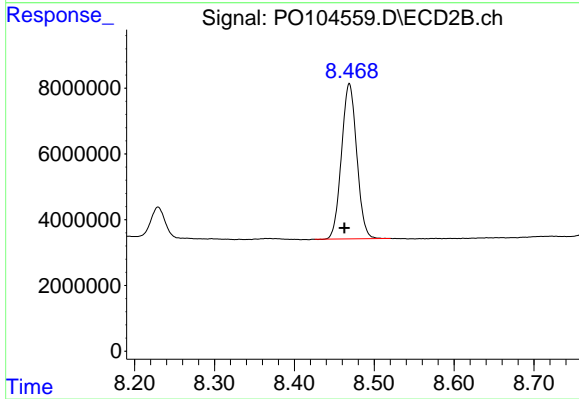
#1 Tetrachloro-m-xylene

R.T.: 3.546 min
 Delta R.T.: -0.001 min
 Response: 25809974
 Conc: 17.20 ng/ml



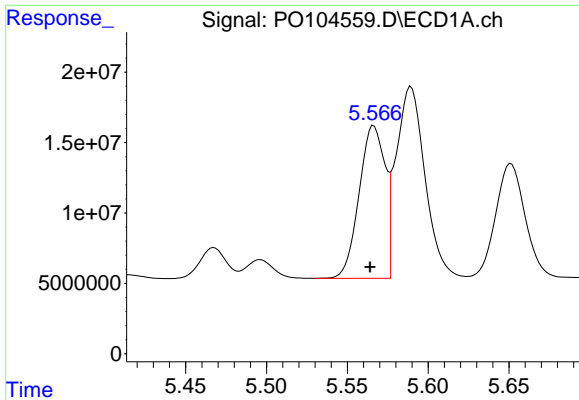
#2 Decachlorobiphenyl

R.T.: 10.116 min
 Delta R.T.: 0.014 min
 Response: 109904985
 Conc: 20.46 ng/ml m



#2 Decachlorobiphenyl

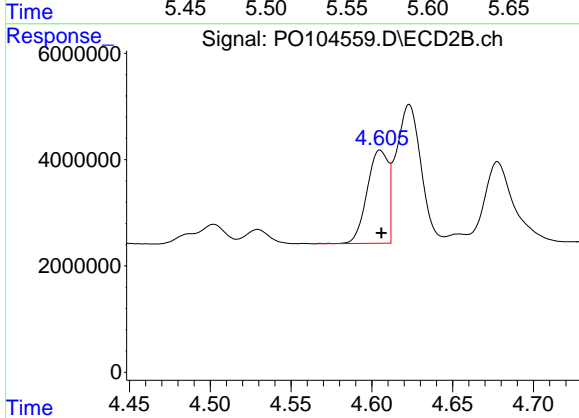
R.T.: 8.469 min
 Delta R.T.: 0.006 min
 Response: 62707466
 Conc: 19.54 ng/ml



#3 AR-1016-1

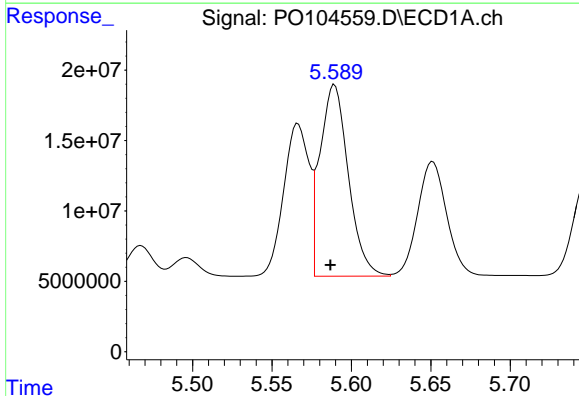
R.T.: 5.566 min
 Delta R.T.: 0.002 min
 Response: 120856258
 Conc: 447.44 ng/ml

Instrument :
 ECD_O
 ClientSampleId :
 PB161812BS



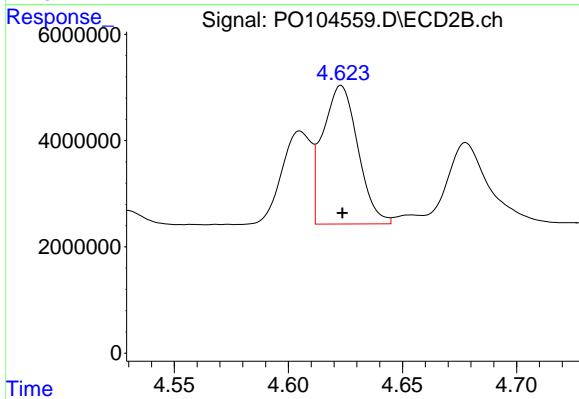
#3 AR-1016-1

R.T.: 4.605 min
 Delta R.T.: 0.000 min
 Response: 15865268
 Conc: 367.13 ng/ml



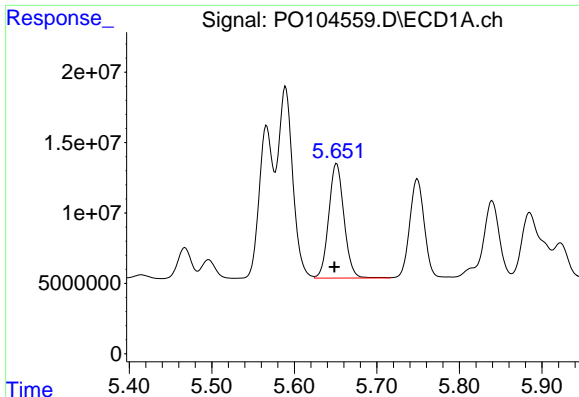
#4 AR-1016-2

R.T.: 5.589 min
 Delta R.T.: 0.003 min
 Response: 169097480
 Conc: 449.69 ng/ml



#4 AR-1016-2

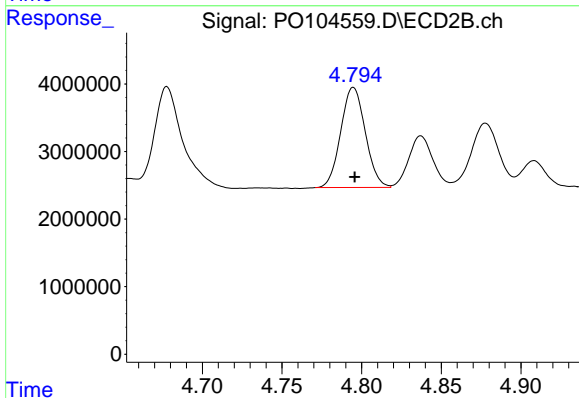
R.T.: 4.623 min
 Delta R.T.: 0.000 min
 Response: 27971742
 Conc: 385.27 ng/ml



#5 AR-1016-3

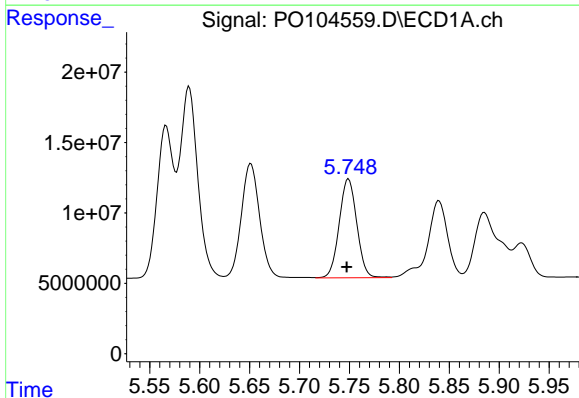
R.T.: 5.651 min
 Delta R.T.: 0.003 min
 Response: 104290551
 Conc: 430.28 ng/ml

Instrument :
 ECD_O
 ClientSampleId :
 PB161812BS



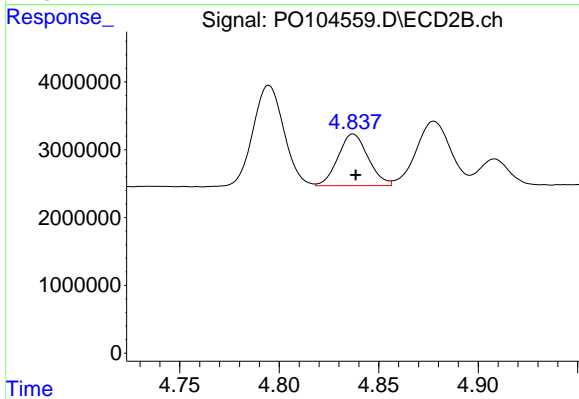
#5 AR-1016-3

R.T.: 4.795 min
 Delta R.T.: 0.000 min
 Response: 15912121
 Conc: 394.01 ng/ml



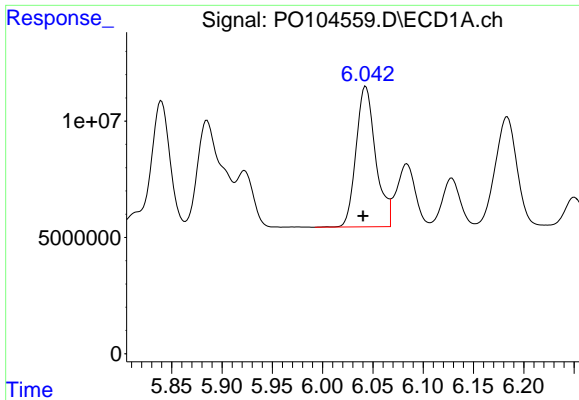
#6 AR-1016-4

R.T.: 5.749 min
 Delta R.T.: 0.002 min
 Response: 86078908
 Conc: 443.10 ng/ml



#6 AR-1016-4

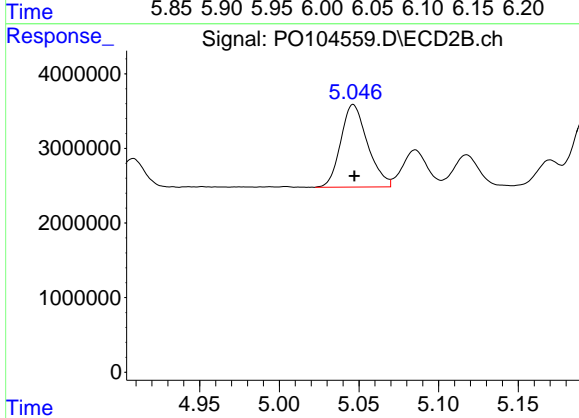
R.T.: 4.837 min
 Delta R.T.: -0.001 min
 Response: 8024499
 Conc: 345.24 ng/ml



#7 AR-1016-5

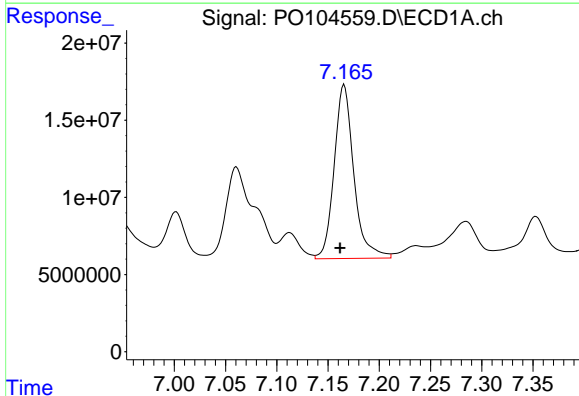
R.T.: 6.043 min
 Delta R.T.: 0.003 min
 Response: 81875484
 Conc: 425.83 ng/ml

Instrument :
 ECD_O
 ClientSampleId :
 PB161812BS



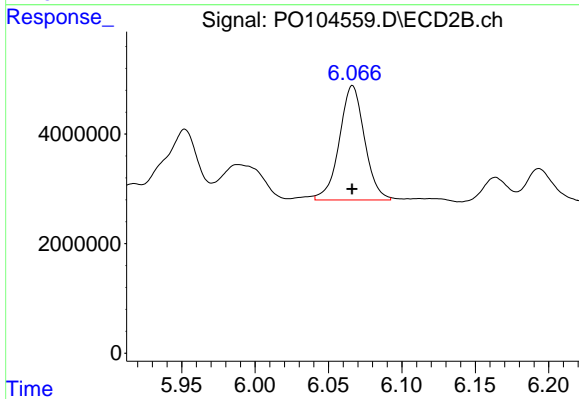
#7 AR-1016-5

R.T.: 5.046 min
 Delta R.T.: 0.000 min
 Response: 12975234
 Conc: 358.80 ng/ml



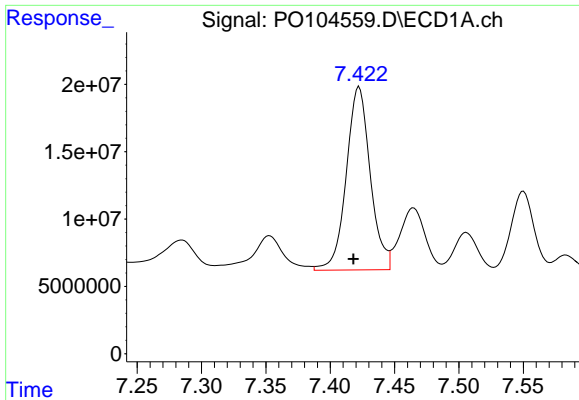
#31 AR-1260-1

R.T.: 7.166 min
 Delta R.T.: 0.004 min
 Response: 150107086
 Conc: 440.67 ng/ml



#31 AR-1260-1

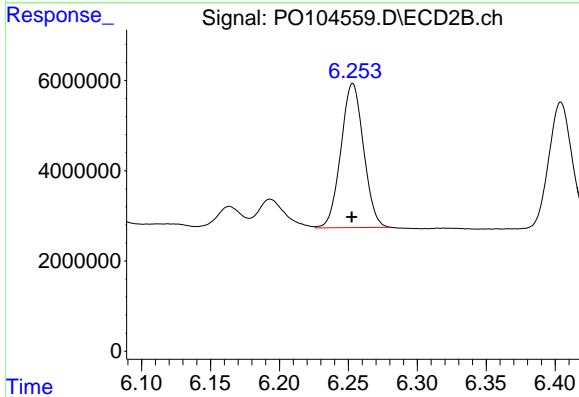
R.T.: 6.066 min
 Delta R.T.: 0.000 min
 Response: 24892535
 Conc: 354.95 ng/ml m



#32 AR-1260-2

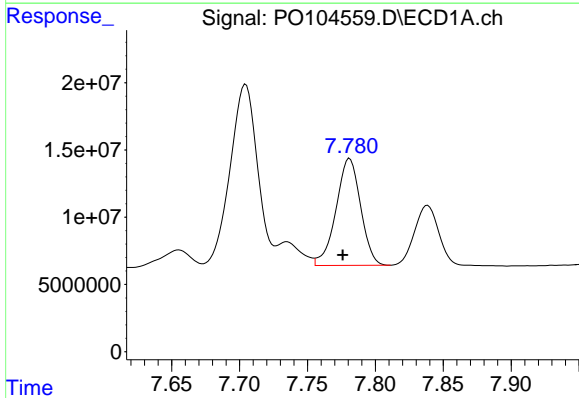
R.T.: 7.422 min
 Delta R.T.: 0.004 min
 Response: 176326520
 Conc: 451.70 ng/ml

Instrument :
 ECD_O
 ClientSampleId :
 PB161812BS



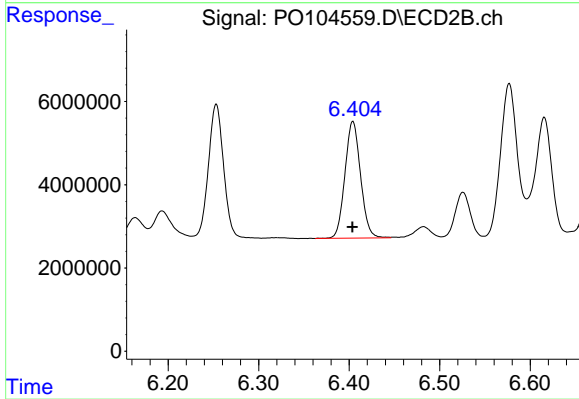
#32 AR-1260-2

R.T.: 6.253 min
 Delta R.T.: 0.000 min
 Response: 36660795
 Conc: 391.06 ng/ml



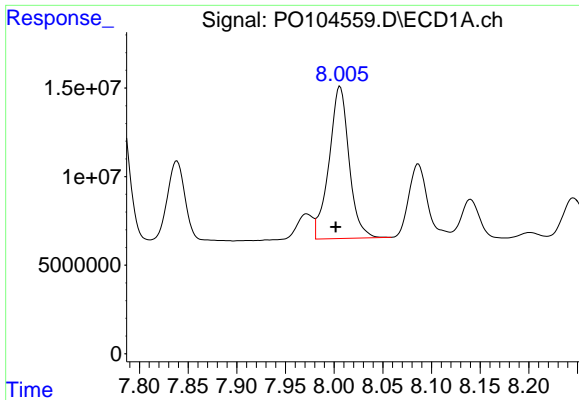
#33 AR-1260-3

R.T.: 7.781 min
 Delta R.T.: 0.005 min
 Response: 100199533
 Conc: 346.24 ng/ml



#33 AR-1260-3

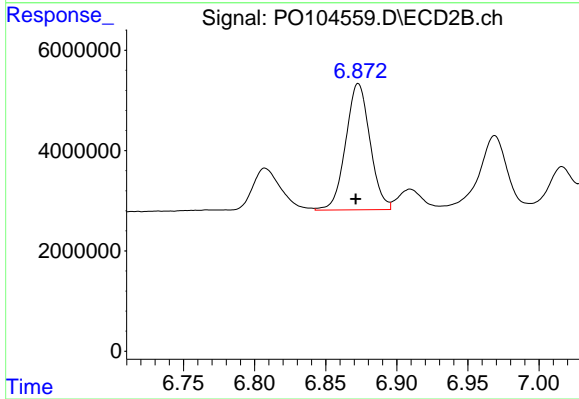
R.T.: 6.404 min
 Delta R.T.: 0.000 min
 Response: 33678361
 Conc: 368.69 ng/ml



#34 AR-1260-4

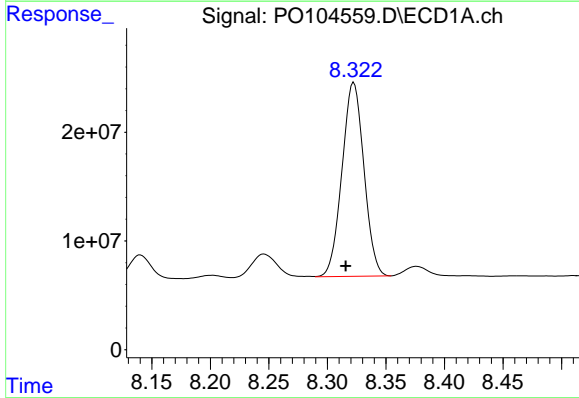
R.T.: 8.006 min
 Delta R.T.: 0.005 min
 Response: 122946055
 Conc: 383.11 ng/ml

Instrument :
 ECD_O
 ClientSampleId :
 PB161812BS



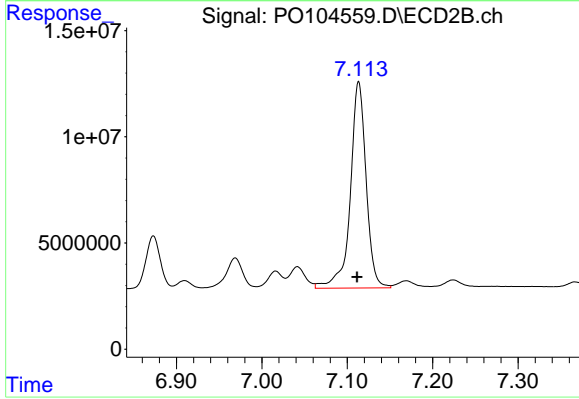
#34 AR-1260-4

R.T.: 6.873 min
 Delta R.T.: 0.002 min
 Response: 29910193
 Conc: 368.74 ng/ml



#35 AR-1260-5

R.T.: 8.323 min
 Delta R.T.: 0.007 min
 Response: 232599499
 Conc: 369.89 ng/ml



#35 AR-1260-5

R.T.: 7.113 min
 Delta R.T.: 0.002 min
 Response: 124966699
 Conc: 443.89 ng/ml