

Data Path : Z:\pestpcbsrv\HPCHEM1\ECD_0\Data\P0062920\
 Data File : P0069283.D
 Signal(s) : Signal #1: ECD1A.CH Signal #2: ECD2B.CH
 Acq On : 29 Jun 2020 14:22
 Operator : DD\AJ
 Sample : L3130-10 5X
 Misc :
 ALS Vial : 10 Sample Multiplier: 1

Instrument :
 ECD_0
 ClientSampleId :
 WOOSPK-029-0004

Manual Integrations
 APPROVED

Ankita
 7/1/2020 12:07:08 PM

Integration File signal 1: autoint1.e
 Integration File signal 2: autoint2.e
 Quant Time: Jun 30 01:33:24 2020
 Quant Method : Z:\pestpcbsrv\HPCHEM1\ECD_0\methods\P0061820.M
 Quant Title : GC EXTRACTABLES
 QLast Update : Mon Jun 29 12:05:30 2020
 Response via : Initial Calibration
 Integrator: ChemStation 6890 Scale Mode: Small noise peaks clipped

Volume Inj. : 2 µl
 Signal #1 Phase : ZB-MR1 Signal #2 Phase: ZB-MR2
 Signal #1 Info : 30Mx0.32mmx 0.50µ Signal #2 Info : 30M x 0.32mm x 0.25µm

Compound	RT#1	RT#2	Resp#1	Resp#2	ng/ml	ng/ml

System Monitoring Compounds						
1) SA Tetrachlo...	4.399	3.564	183498	194299	6.203m	5.048
2) SA Decachlor...	10.063	8.774	1035130	1025680	21.794m	18.842m
Target Compounds						
41) L9 AR-1268-1	8.812	7.727	10907007	8094257	1627.093	1143.504 #
42) L9 AR-1268-2	8.894	7.792	12790985	11592007	2003.003	1795.672
43) L9 AR-1268-3	9.080	7.995	2309364	2108812	424.847	389.674
44) L9 AR-1268-4	9.456	8.287	7791844	6845777	3174.653	2674.089
45) L9 AR-1268-5	9.794	8.558	12057747	11197065	655.622	648.592

(f)=RT Delta > 1/2 Window (#)=Amounts differ by > 25% (m)=manual int.

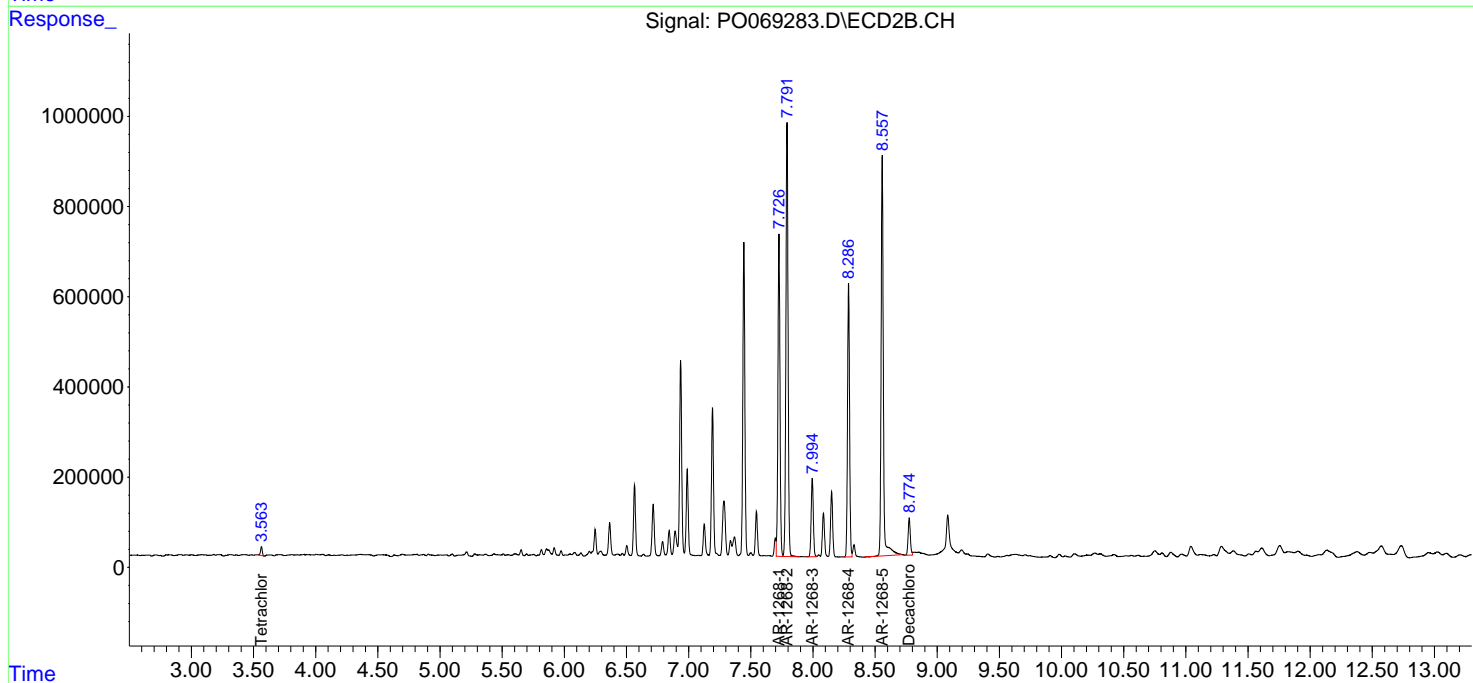
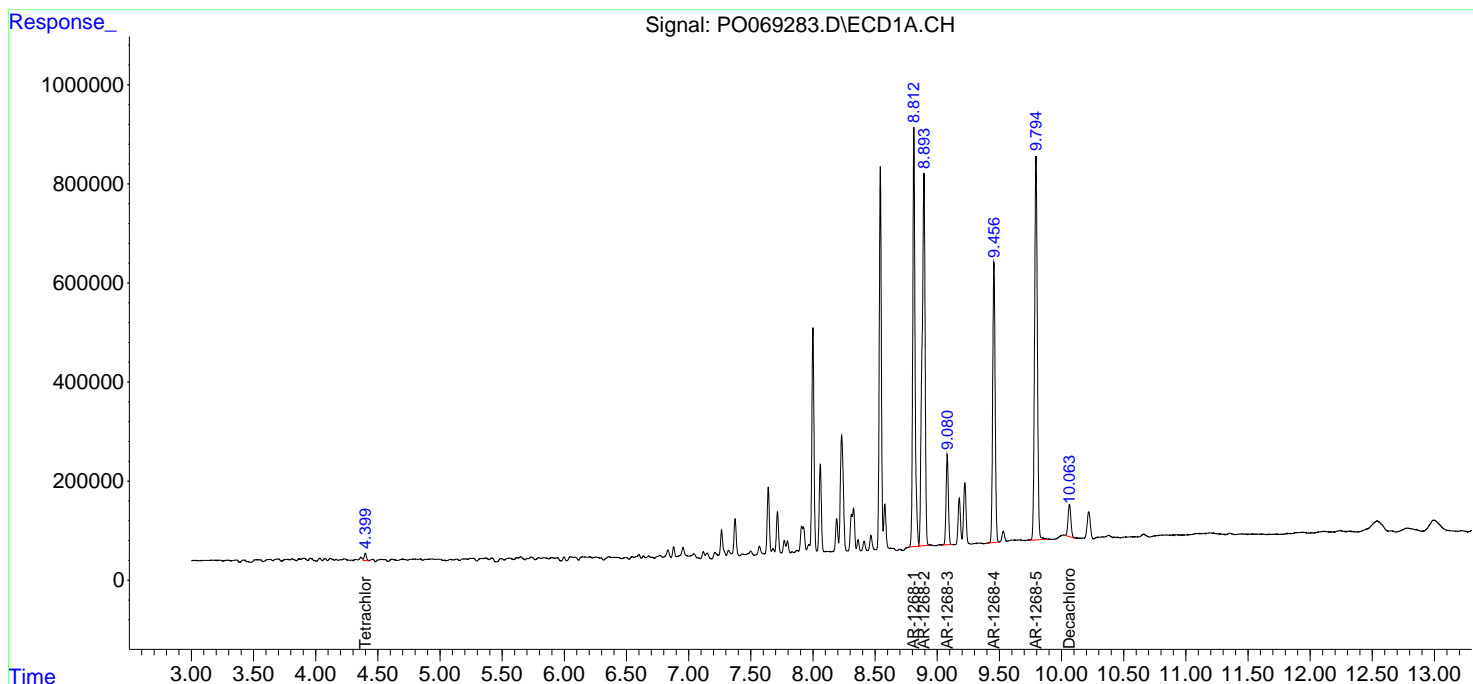
Data Path : Z:\pestpcbsrv\HPCHEM1\ECD_0\Data\P0062920\
 Data File : P0069283.D
 Signal(s) : Signal #1: ECD1A.CH Signal #2: ECD2B.CH
 Acq On : 29 Jun 2020 14:22
 Operator : DD\AJ
 Sample : L3130-10 5X
 Misc :
 ALS Vial : 10 Sample Multiplier: 1

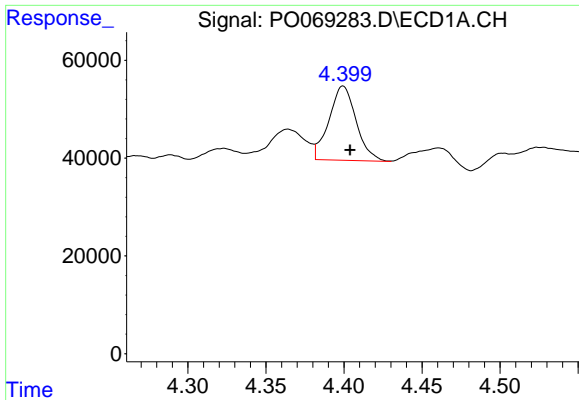
Instrument :
 ECD_O
ClientSampled :
 WOOSPK-029-0004

Manual Integrations
APPROVED
 Ankita
 7/1/2020 12:07:08 PM

Integration File signal 1: autoint1.e
 Integration File signal 2: autoint2.e
 Quant Time: Jun 30 01:33:24 2020
 Quant Method : Z:\pestpcbsrv\HPCHEM1\ECD_0\methods\P0061820.M
 Quant Title : GC EXTRACTABLES
 QLast Update : Mon Jun 29 12:05:30 2020
 Response via : Initial Calibration
 Integrator: ChemStation 6890 Scale Mode: Small noise peaks clipped

Volume Inj. : 2 µl
 Signal #1 Phase : ZB-MR1 Signal #2 Phase: ZB-MR2
 Signal #1 Info : 30Mx0.32mmx 0.50µ Signal #2 Info : 30M x 0.32mm x 0.25µm

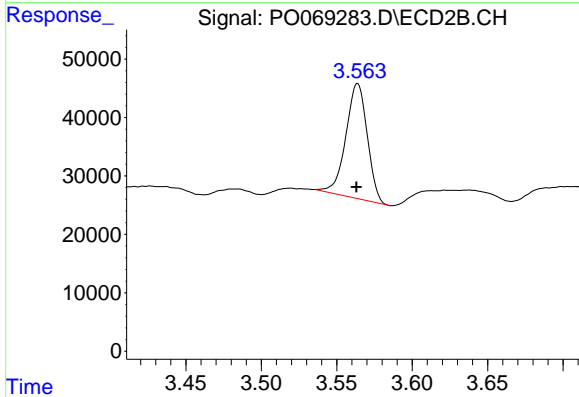




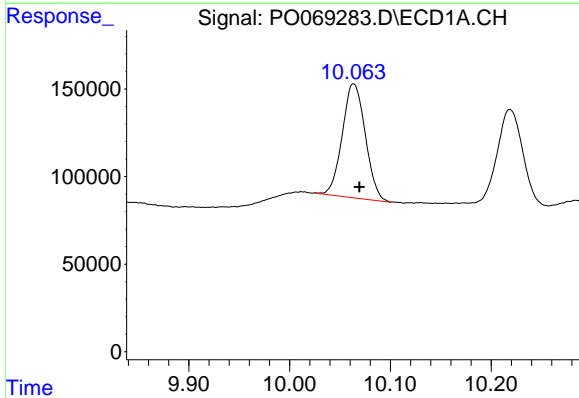
#1 Tetrachloro-m-xylene
 R.T.: 4.399 min
 Delta R.T.: -0.005 min
 Response: 183498
 Conc: 6.20 ng/ml m

Instrument :
 ECD_O
 ClientSampleId :
 WOOSPK-029-0004

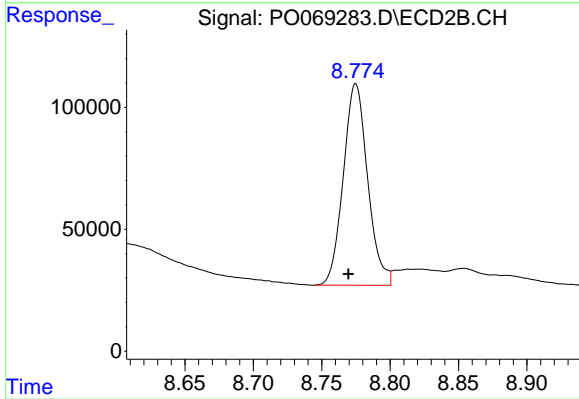
Manual Integrations
 APPROVED
 Ankita
 7/1/2020 12:07:08 PM



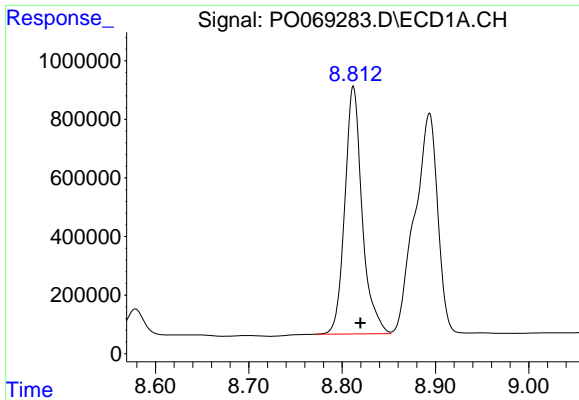
#1 Tetrachloro-m-xylene
 R.T.: 3.564 min
 Delta R.T.: 0.000 min
 Response: 194299
 Conc: 5.05 ng/ml



#2 Decachlorobiphenyl
 R.T.: 10.063 min
 Delta R.T.: -0.006 min
 Response: 1035130
 Conc: 21.79 ng/ml m



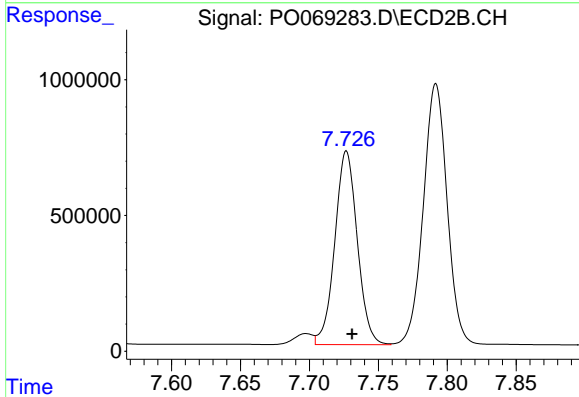
#2 Decachlorobiphenyl
 R.T.: 8.774 min
 Delta R.T.: 0.005 min
 Response: 1025680
 Conc: 18.84 ng/ml m



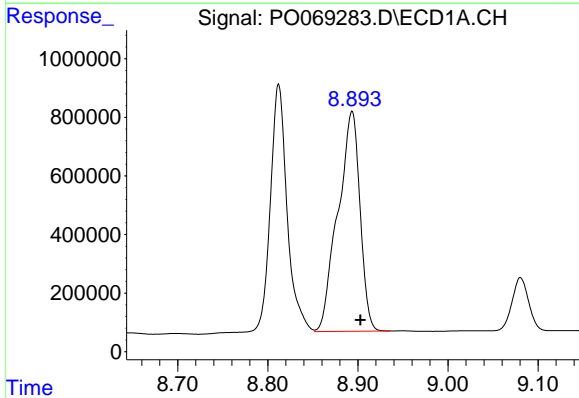
#41 AR-1268-1
 R.T.: 8.812 min
 Delta R.T.: -0.008 min
 Response: 10907007
 Conc: 1627.09 ng/ml

Instrument :
 ECD_O
ClientSampleId :
 WOOSPK-029-0004

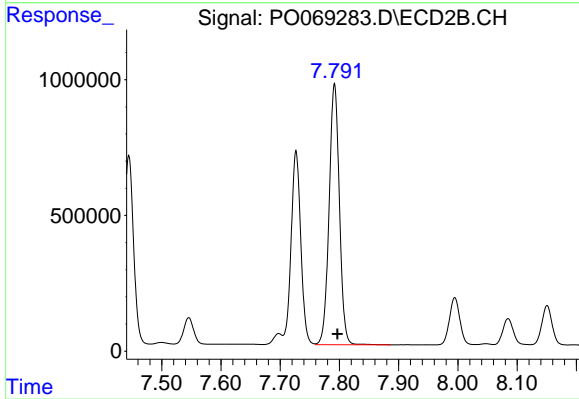
Manual Integrations
APPROVED
 Ankita
 7/1/2020 12:07:08 PM



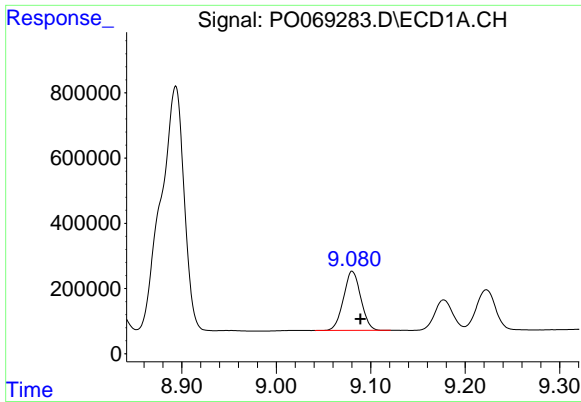
#41 AR-1268-1
 R.T.: 7.727 min
 Delta R.T.: -0.004 min
 Response: 8094257
 Conc: 1143.50 ng/ml



#42 AR-1268-2
 R.T.: 8.894 min
 Delta R.T.: -0.009 min
 Response: 12790985
 Conc: 2003.00 ng/ml



#42 AR-1268-2
 R.T.: 7.792 min
 Delta R.T.: -0.005 min
 Response: 11592007
 Conc: 1795.67 ng/ml



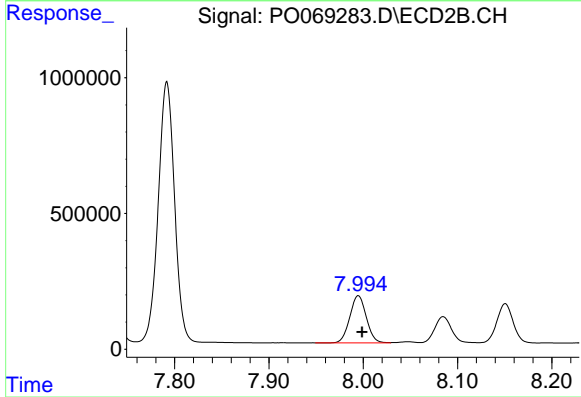
#43 AR-1268-3

R.T.: 9.080 min
 Delta R.T.: -0.008 min
 Response: 2309364
 Conc: 424.85 ng/ml

Instrument :
 ECD_O
 ClientSampleId :
 WOOSPK-029-0004

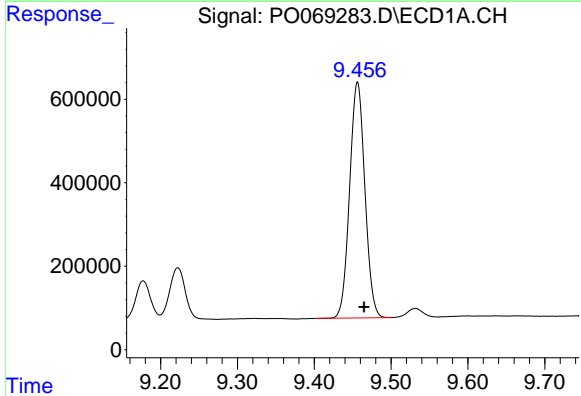
Manual Integrations
 APPROVED

Ankita
 7/1/2020 12:07:08 PM



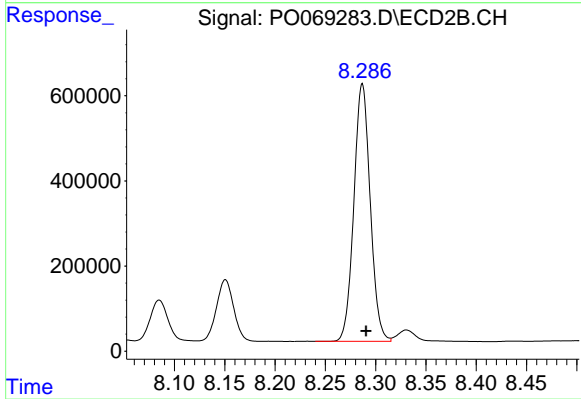
#43 AR-1268-3

R.T.: 7.995 min
 Delta R.T.: -0.004 min
 Response: 2108812
 Conc: 389.67 ng/ml



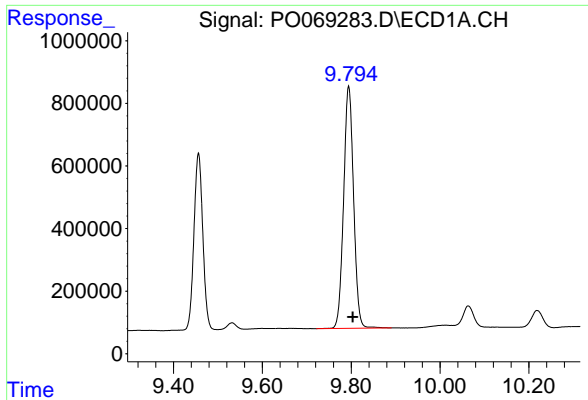
#44 AR-1268-4

R.T.: 9.456 min
 Delta R.T.: -0.008 min
 Response: 7791844
 Conc: 3174.65 ng/ml



#44 AR-1268-4

R.T.: 8.287 min
 Delta R.T.: -0.004 min
 Response: 6845777
 Conc: 2674.09 ng/ml



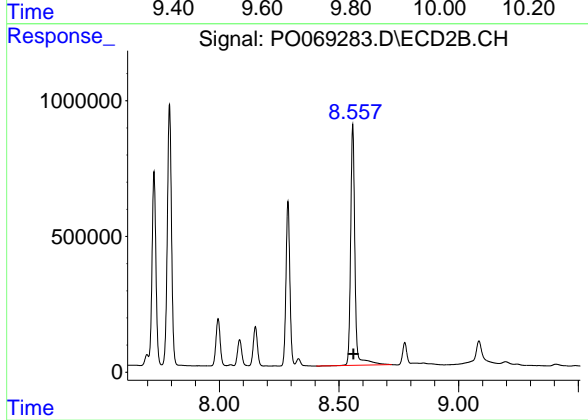
#45 AR-1268-5

R.T.: 9.794 min
Delta R.T.: -0.009 min
Response: 12057747
Conc: 655.62 ng/ml

Instrument :
ECD_O
ClientSampleId :
WOOSPK-029-0004

Manual Integrations
APPROVED

Ankita
7/1/2020 12:07:08 PM



#45 AR-1268-5

R.T.: 8.558 min
Delta R.T.: -0.004 min
Response: 11197065
Conc: 648.59 ng/ml