

Data Path : Z:\pestpcbsrv\HPCHEM1\ECD_0\Data\P0062920\
 Data File : P0069296.D
 Signal(s) : Signal #1: ECD1A.CH Signal #2: ECD2B.CH
 Acq On : 29 Jun 2020 19:13
 Operator : DD\AJ
 Sample : AR1660CCC500
 Misc :
 ALS Vial : 3 Sample Multiplier: 1

Instrument :
 ECD_0
 ClientSampleId :
 AR1660CCC500

Integration File signal 1: autoint1.e
 Integration File signal 2: autoint2.e
 Quant Time: Jun 30 01:39:48 2020
 Quant Method : Z:\pestpcbsrv\HPCHEM1\ECD_0\methods\P0061820.M
 Quant Title : GC EXTRACTABLES
 QLast Update : Mon Jun 29 12:05:30 2020
 Response via : Initial Calibration
 Integrator: ChemStation 6890 Scale Mode: Small noise peaks clipped

Volume Inj. : 2 µl
 Signal #1 Phase : ZB-MR1 Signal #2 Phase: ZB-MR2
 Signal #1 Info : 30Mx0.32mmx 0.50µ Signal #2 Info : 30M x 0.32mm x 0.25µm

Compound	RT#1	RT#2	Resp#1	Resp#2	ng/ml	ng/ml

System Monitoring Compounds						
1) SA Tetrachlo...	4.401	3.565	1774387	1838400	59.980	47.764
2) SA Decachlor...	10.065	8.775	2775465	2631925	58.436	48.349
Target Compounds						
3) L1 AR-1016-1	5.709	4.797	773430	714554	597.585	472.685
4) L1 AR-1016-2	5.731	4.816	1082718	982555	589.934	463.397
5) L1 AR-1016-3	5.795	5.001	658039	537604	588.314	477.096
6) L1 AR-1016-4	5.900	5.058	553083	474567	589.834	482.858
7) L1 AR-1016-5	6.211	5.279	543947	585055	539.705	480.649
31) L7 AR-1260-1	7.374	6.365	974162	1058050	510.453	452.168
32) L7 AR-1260-2	7.641	6.565	1222763	1296306	522.433	455.399
33) L7 AR-1260-3	8.000	6.714	955939	1185054	538.084	440.610
34) L7 AR-1260-4	8.227	7.193	1036586	1065780	497.058	444.841
35) L7 AR-1260-5	8.542	7.444	2305348	2545953	524.487	439.459

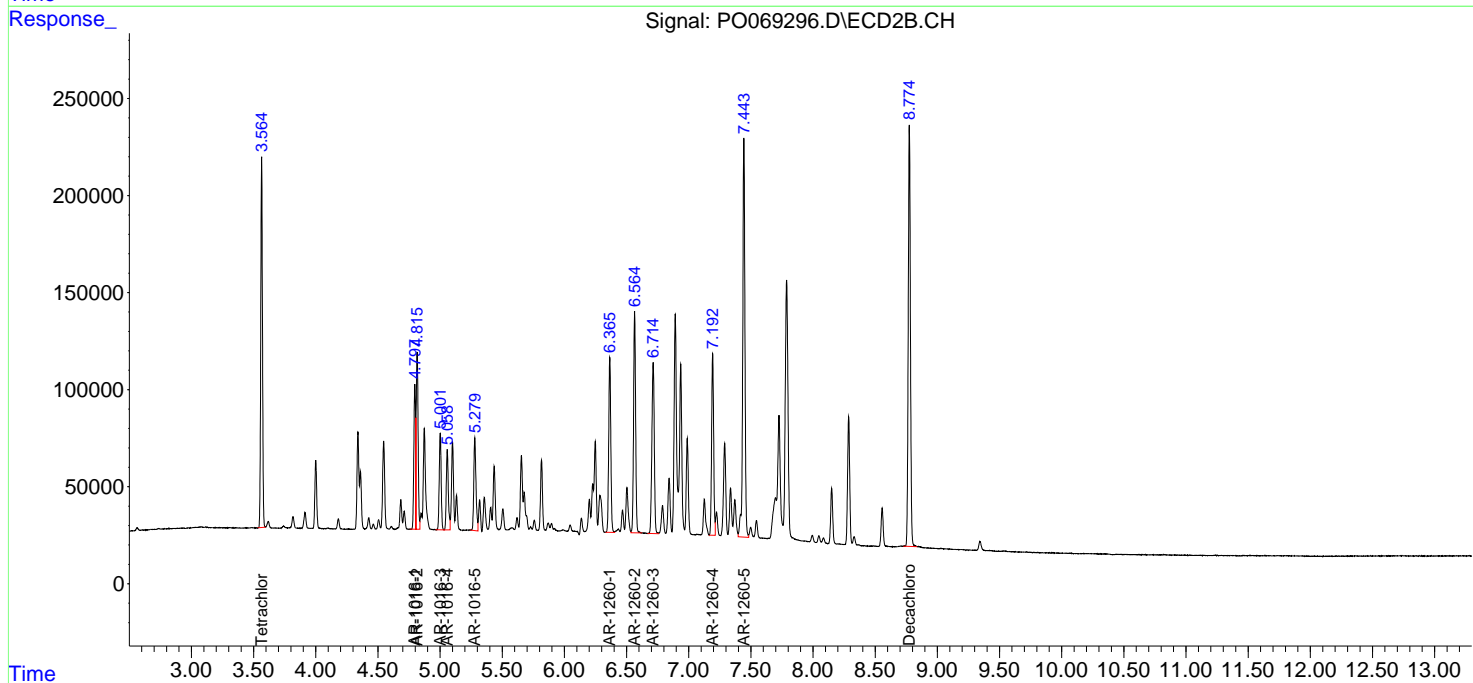
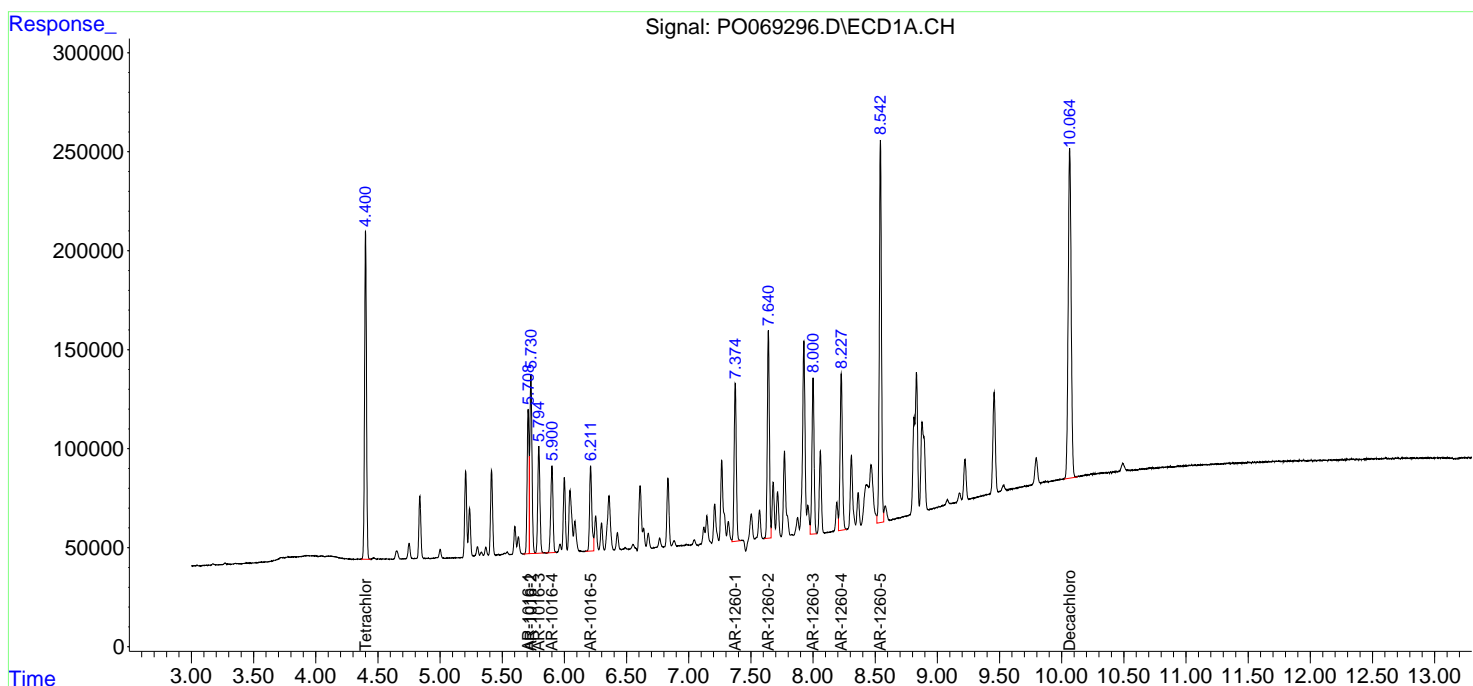
(f)=RT Delta > 1/2 Window (#)=Amounts differ by > 25% (m)=manual int.

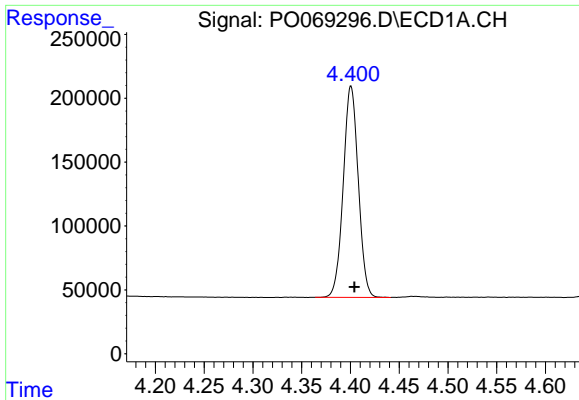
Data Path : Z:\pestpcbsrv\HPCHEM1\ECD_O\Data\P0062920\
 Data File : P0069296.D
 Signal(s) : Signal #1: ECD1A.CH Signal #2: ECD2B.CH
 Acq On : 29 Jun 2020 19:13
 Operator : DD\AJ
 Sample : AR1660CCC500
 Misc :
 ALS Vial : 3 Sample Multiplier: 1

Instrument :
 ECD_O
 ClientSampled :
 AR1660CCC500

Integration File signal 1: autoint1.e
 Integration File signal 2: autoint2.e
 Quant Time: Jun 30 01:39:48 2020
 Quant Method : Z:\pestpcbsrv\HPCHEM1\ECD_O\methods\P0061820.M
 Quant Title : GC EXTRACTABLES
 QLast Update : Mon Jun 29 12:05:30 2020
 Response via : Initial Calibration
 Integrator: ChemStation 6890 Scale Mode: Small noise peaks clipped

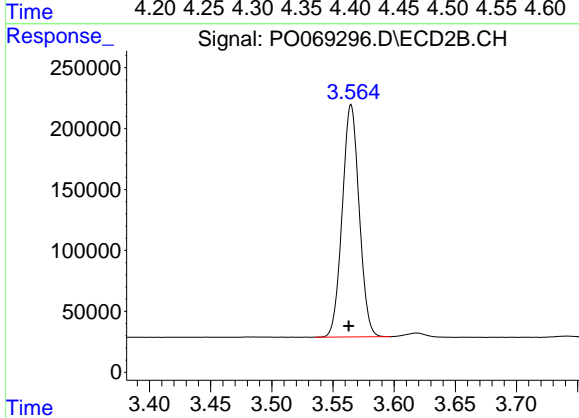
Volume Inj. : 2 µl
 Signal #1 Phase : ZB-MR1 Signal #2 Phase: ZB-MR2
 Signal #1 Info : 30Mx0.32mmx 0.50µ Signal #2 Info : 30M x 0.32mm x 0.25µm



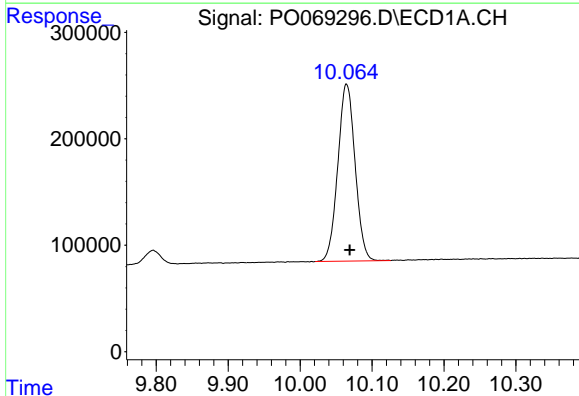


#1 Tetrachloro-m-xylene
 R.T.: 4.401 min
 Delta R.T.: -0.003 min
 Response: 1774387
 Conc: 59.98 ng/ml

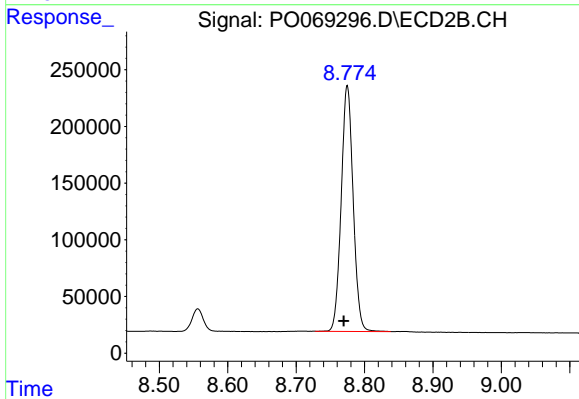
Instrument :
 ECD_O
 ClientSampleId :
 AR1660CCC500



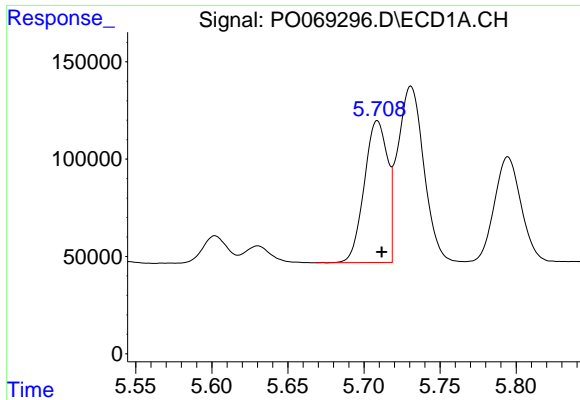
#1 Tetrachloro-m-xylene
 R.T.: 3.565 min
 Delta R.T.: 0.002 min
 Response: 1838400
 Conc: 47.76 ng/ml



#2 Decachlorobiphenyl
 R.T.: 10.065 min
 Delta R.T.: -0.005 min
 Response: 2775465
 Conc: 58.44 ng/ml

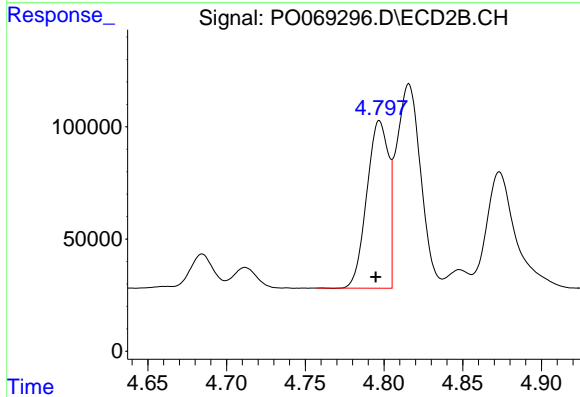


#2 Decachlorobiphenyl
 R.T.: 8.775 min
 Delta R.T.: 0.005 min
 Response: 2631925
 Conc: 48.35 ng/ml

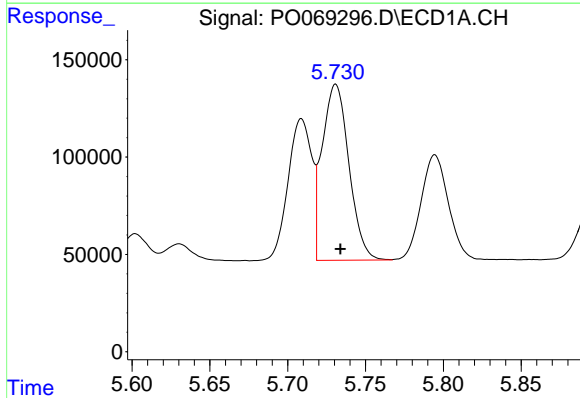


#3 AR-1016-1
 R.T.: 5.709 min
 Delta R.T.: -0.003 min
 Response: 773430
 Conc: 597.59 ng/ml

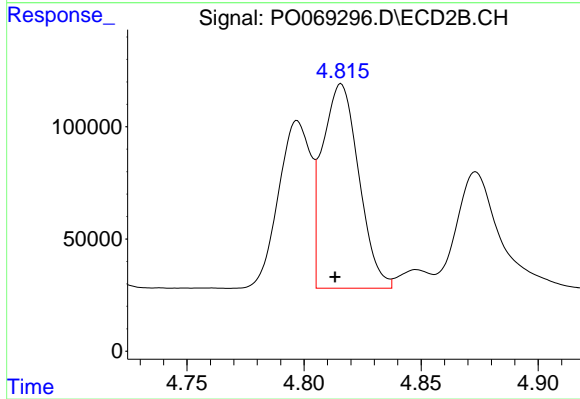
Instrument :
 ECD_O
ClientSampled :
 AR1660CCC500



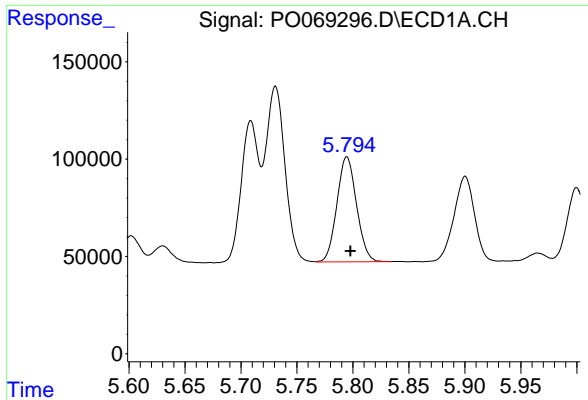
#3 AR-1016-1
 R.T.: 4.797 min
 Delta R.T.: 0.002 min
 Response: 714554
 Conc: 472.68 ng/ml



#4 AR-1016-2
 R.T.: 5.731 min
 Delta R.T.: -0.003 min
 Response: 1082718
 Conc: 589.93 ng/ml

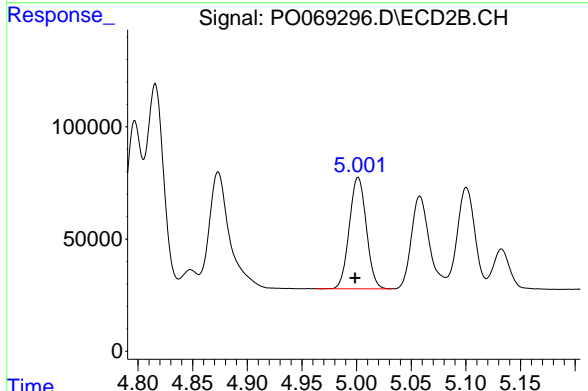


#4 AR-1016-2
 R.T.: 4.816 min
 Delta R.T.: 0.003 min
 Response: 982555
 Conc: 463.40 ng/ml

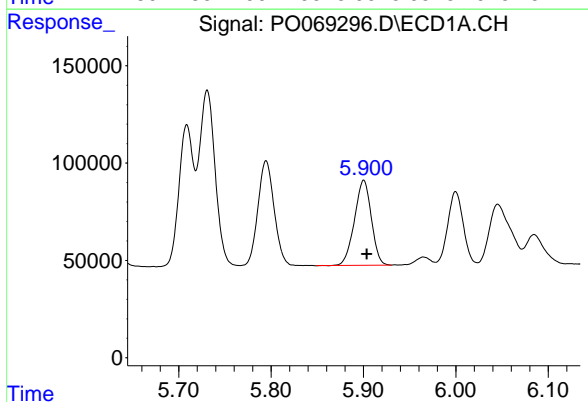


#5 AR-1016-3
R.T.: 5.795 min
Delta R.T.: -0.003 min
Response: 658039
Conc: 588.31 ng/ml

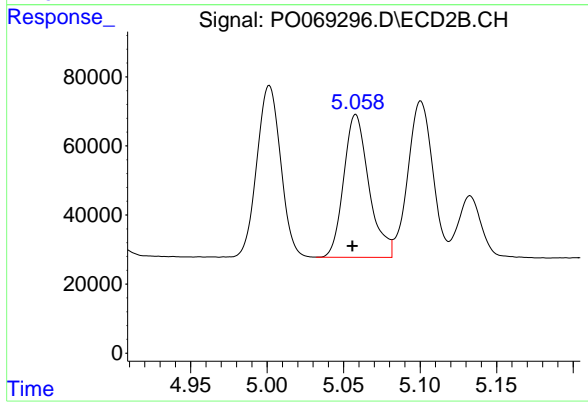
Instrument :
ECD_O
ClientSampleId :
AR1660CCC500



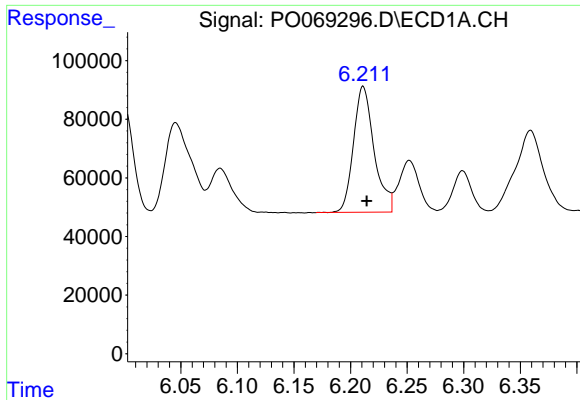
#5 AR-1016-3
R.T.: 5.001 min
Delta R.T.: 0.003 min
Response: 537604
Conc: 477.10 ng/ml



#6 AR-1016-4
R.T.: 5.900 min
Delta R.T.: -0.003 min
Response: 553083
Conc: 589.83 ng/ml



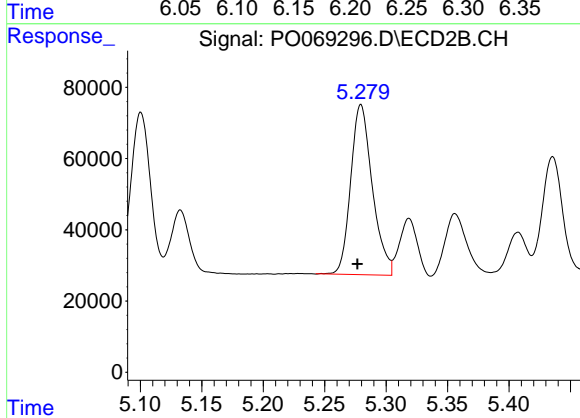
#6 AR-1016-4
R.T.: 5.058 min
Delta R.T.: 0.002 min
Response: 474567
Conc: 482.86 ng/ml



#7 AR-1016-5

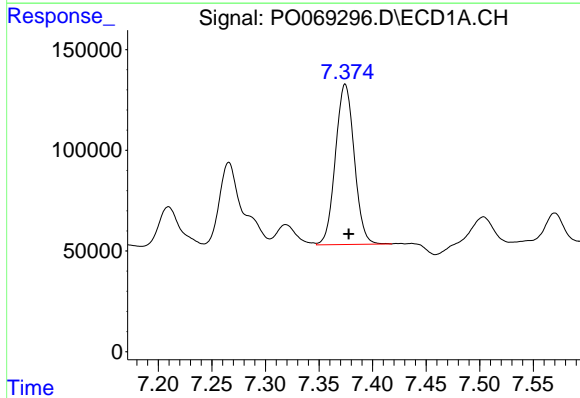
R.T.: 6.211 min
Delta R.T.: -0.003 min
Response: 543947
Conc: 539.70 ng/ml

Instrument :
ECD_O
ClientSampled :
AR1660CCC500



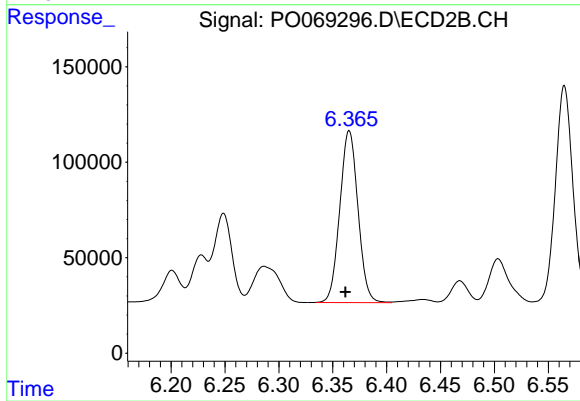
#7 AR-1016-5

R.T.: 5.279 min
Delta R.T.: 0.003 min
Response: 585055
Conc: 480.65 ng/ml



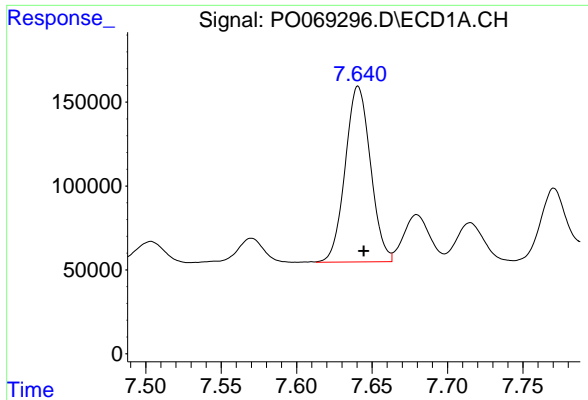
#31 AR-1260-1

R.T.: 7.374 min
Delta R.T.: -0.003 min
Response: 974162
Conc: 510.45 ng/ml



#31 AR-1260-1

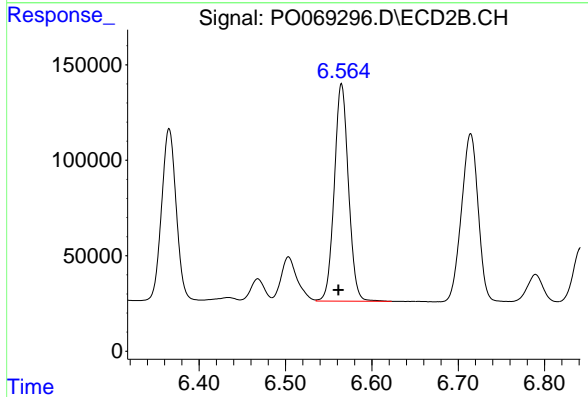
R.T.: 6.365 min
Delta R.T.: 0.004 min
Response: 1058050
Conc: 452.17 ng/ml



#32 AR-1260-2

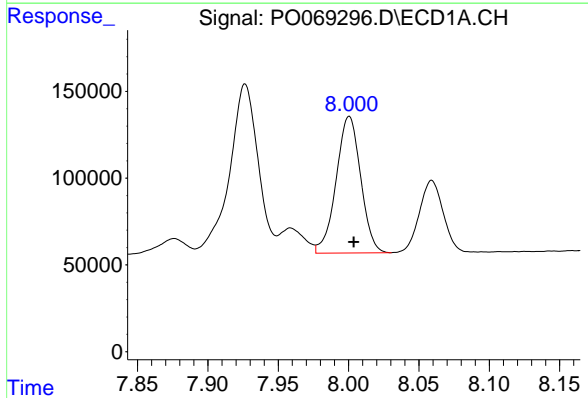
R.T.: 7.641 min
Delta R.T.: -0.004 min
Response: 1222763
Conc: 522.43 ng/ml

Instrument :
ECD_O
ClientSampleId :
AR1660CCC500



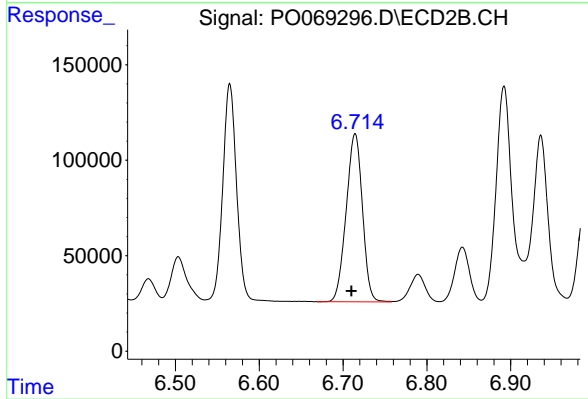
#32 AR-1260-2

R.T.: 6.565 min
Delta R.T.: 0.003 min
Response: 1296306
Conc: 455.40 ng/ml



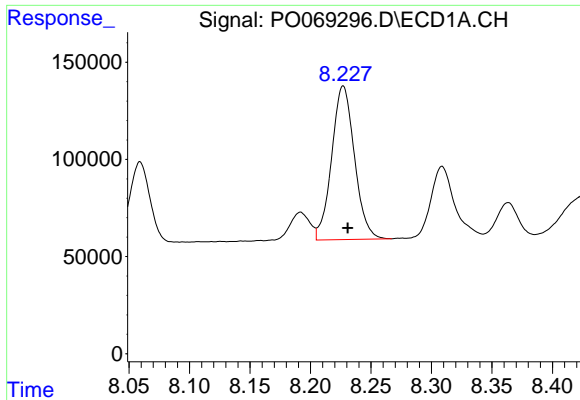
#33 AR-1260-3

R.T.: 8.000 min
Delta R.T.: -0.003 min
Response: 955939
Conc: 538.08 ng/ml



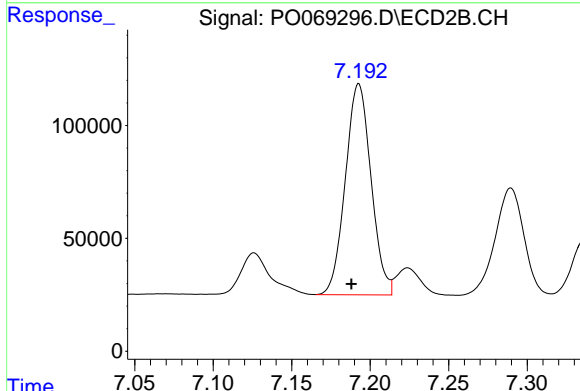
#33 AR-1260-3

R.T.: 6.714 min
Delta R.T.: 0.005 min
Response: 1185054
Conc: 440.61 ng/ml

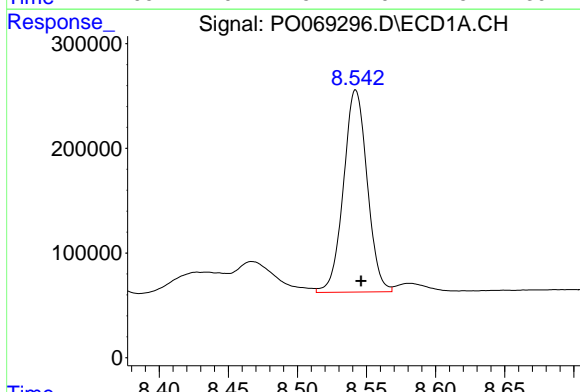


#34 AR-1260-4
 R.T.: 8.227 min
 Delta R.T.: -0.004 min
 Response: 1036586
 Conc: 497.06 ng/ml

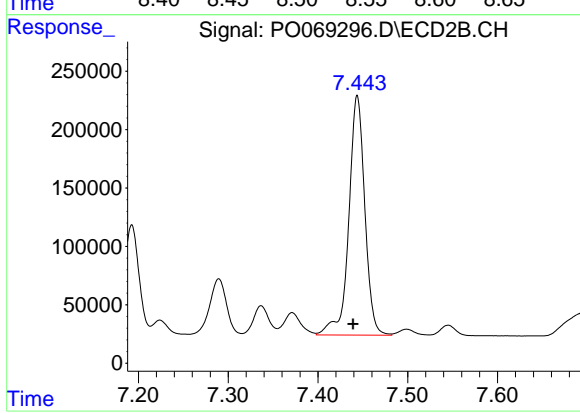
Instrument :
 ECD_O
 ClientSampled :
 AR1660CCC500



#34 AR-1260-4
 R.T.: 7.193 min
 Delta R.T.: 0.005 min
 Response: 1065780
 Conc: 444.84 ng/ml



#35 AR-1260-5
 R.T.: 8.542 min
 Delta R.T.: -0.004 min
 Response: 2305348
 Conc: 524.49 ng/ml



#35 AR-1260-5
 R.T.: 7.444 min
 Delta R.T.: 0.005 min
 Response: 2545953
 Conc: 439.46 ng/ml