

Data Path : Z:\pestpcbsrv\HPCHEM1\ECD\_0\Data\P0070121\  
 Data File : P0079261.D  
 Signal(s) : Signal #1: ECD1A.CH Signal #2: ECD2B.CH  
 Acq On : 02 Jul 2021 00:34  
 Operator : DD\AJ  
 Sample : AR1254ICC500  
 Misc :  
 ALS Vial : 22 Sample Multiplier: 1

Instrument :  
 ECD\_0  
 ClientSampleId :  
 AR1254ICC500

Integration File signal 1: autoint1.e  
 Integration File signal 2: autoint2.e  
 Quant Time: Jul 02 06:05:03 2021  
 Quant Method : Z:\pestpcbsrv\HPCHEM1\ECD\_0\methods\P0070121.M  
 Quant Title : GC EXTRACTABLES  
 QLast Update : Fri Jul 02 06:03:52 2021  
 Response via : Initial Calibration  
 Integrator: ChemStation 6890 Scale Mode: Small noise peaks clipped

Volume Inj. : 2 µl  
 Signal #1 Phase : ZB-MR1 Signal #2 Phase: ZB-MR2  
 Signal #1 Info : 30Mx0.32mmx 0.50µ Signal #2 Info : 30M x 0.32mm x 0.25µm

Compound	RT#1	RT#2	Resp#1	Resp#2	ng/ml	ng/ml
-----						
System Monitoring Compounds						
1) SA Tetrachlo...	5.020	4.224	3282586	1532084	50.000	50.000
2) SA Decachlor...	11.147	9.656	2353329	1223344	50.000	50.000
Target Compounds						
26) L6 AR-1254-1	7.266	6.391	1053552	793338	500.000	500.000
27) L6 AR-1254-2	7.498	6.550	1633597	694286	500.000	500.000
28) L6 AR-1254-3	7.880	6.979	1731770	1097856	500.000	500.000
29) L6 AR-1254-4	8.178	7.219	1263485	698703	500.000	500.000
30) L6 AR-1254-5	8.608	7.655	1335916	956037	500.000	500.000
-----						

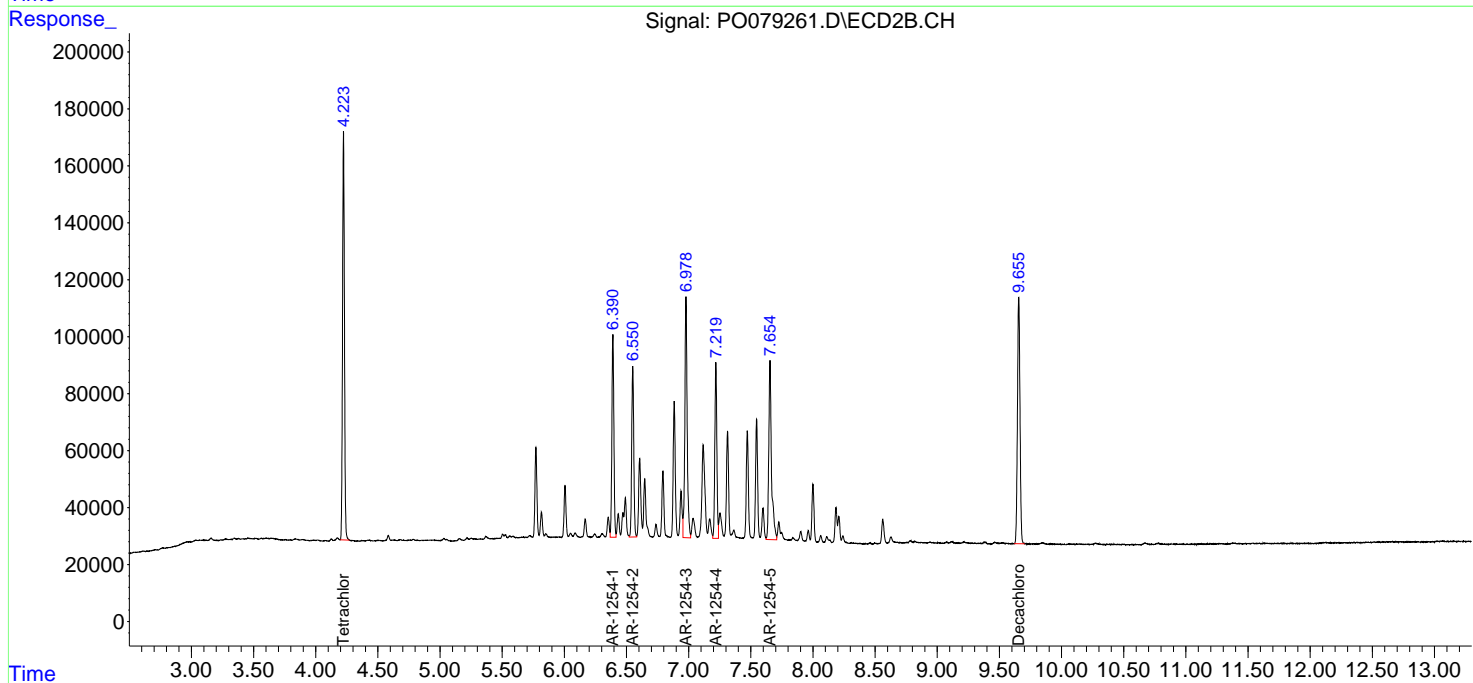
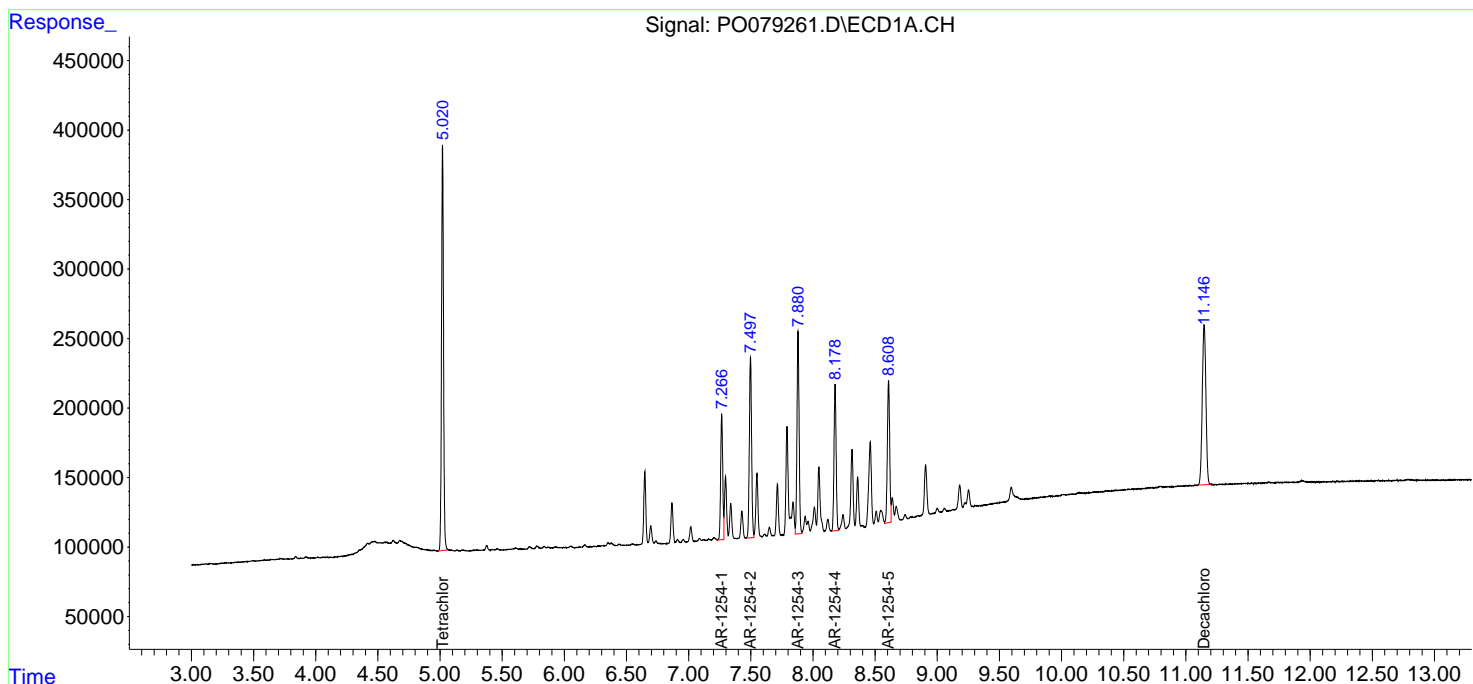
(f)=RT Delta > 1/2 Window (#)=Amounts differ by > 25% (m)=manual int.

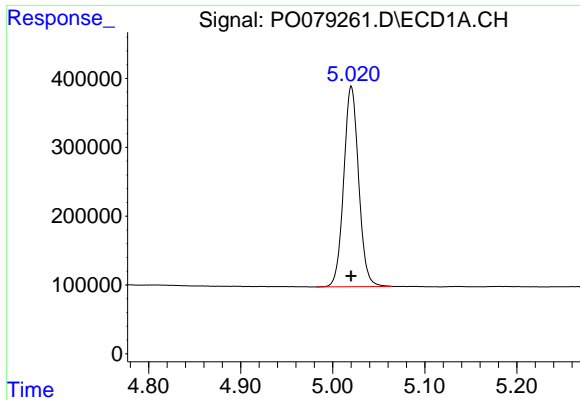
Data Path : Z:\pestpcbsrv\HPCHEM1\ECD\_O\Data\P0070121\  
 Data File : P0079261.D  
 Signal(s) : Signal #1: ECD1A.CH Signal #2: ECD2B.CH  
 Acq On : 02 Jul 2021 00:34  
 Operator : DD\AJ  
 Sample : AR1254ICC500  
 Misc :  
 ALS Vial : 22 Sample Multiplier: 1

Instrument :  
 ECD\_O  
 ClientSampleID :  
 AR1254ICC500

Integration File signal 1: autoint1.e  
 Integration File signal 2: autoint2.e  
 Quant Time: Jul 02 06:05:03 2021  
 Quant Method : Z:\pestpcbsrv\HPCHEM1\ECD\_O\methods\P0070121.M  
 Quant Title : GC EXTRACTABLES  
 QLast Update : Fri Jul 02 06:03:52 2021  
 Response via : Initial Calibration  
 Integrator: ChemStation 6890 Scale Mode: Small noise peaks clipped

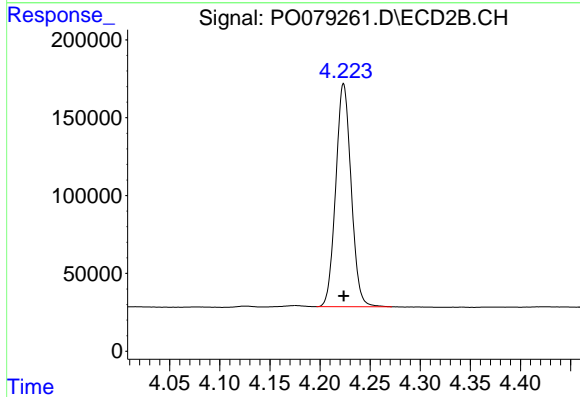
Volume Inj. : 2 µl  
 Signal #1 Phase : ZB-MR1 Signal #2 Phase: ZB-MR2  
 Signal #1 Info : 30Mx0.32mmx 0.50µ Signal #2 Info : 30M x 0.32mm x 0.25µm



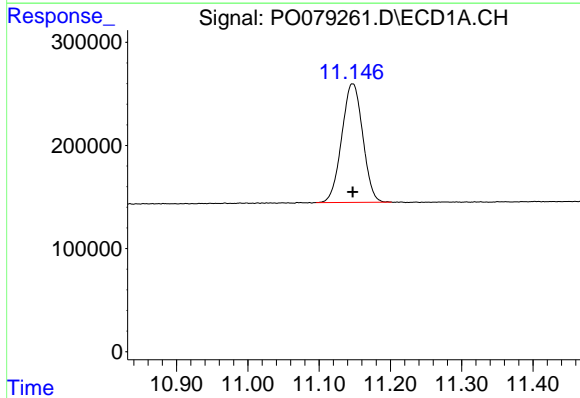


#1 Tetrachloro-m-xylene  
 R.T.: 5.020 min  
 Delta R.T.: 0.000 min  
 Response: 3282586  
 Conc: 50.00 ng/ml

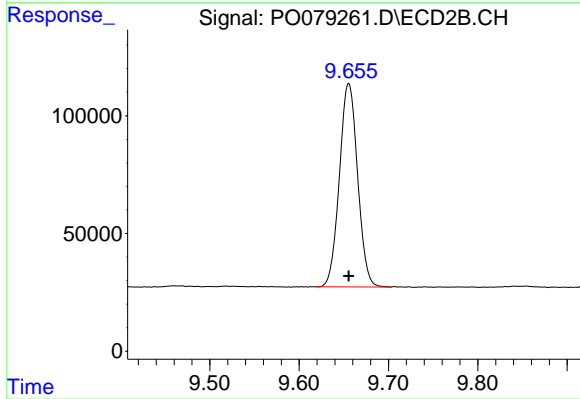
Instrument :  
 ECD\_O  
 ClientSampleId :  
 AR1254ICC500



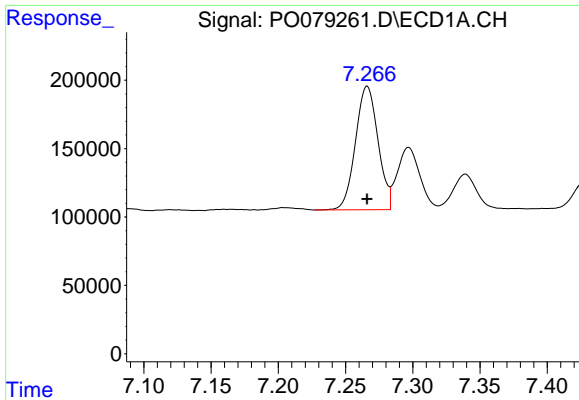
#1 Tetrachloro-m-xylene  
 R.T.: 4.224 min  
 Delta R.T.: 0.000 min  
 Response: 1532084  
 Conc: 50.00 ng/ml



#2 Decachlorobiphenyl  
 R.T.: 11.147 min  
 Delta R.T.: 0.000 min  
 Response: 2353329  
 Conc: 50.00 ng/ml



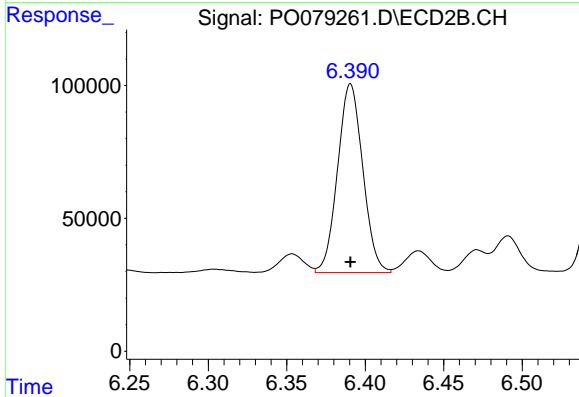
#2 Decachlorobiphenyl  
 R.T.: 9.656 min  
 Delta R.T.: 0.000 min  
 Response: 1223344  
 Conc: 50.00 ng/ml



#26 AR-1254-1

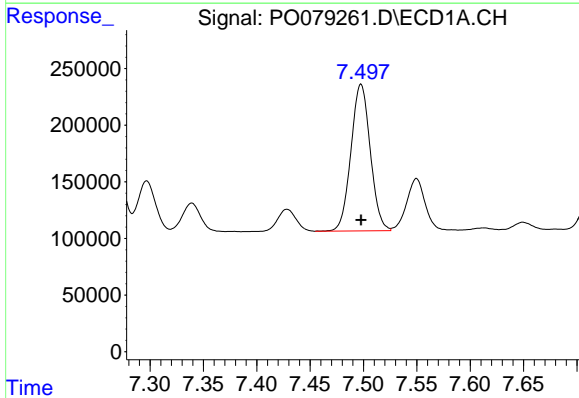
R.T.: 7.266 min  
 Delta R.T.: 0.000 min  
 Response: 1053552  
 Conc: 500.00 ng/ml

Instrument :  
 ECD\_O  
 ClientSampleId :  
 AR1254ICC500



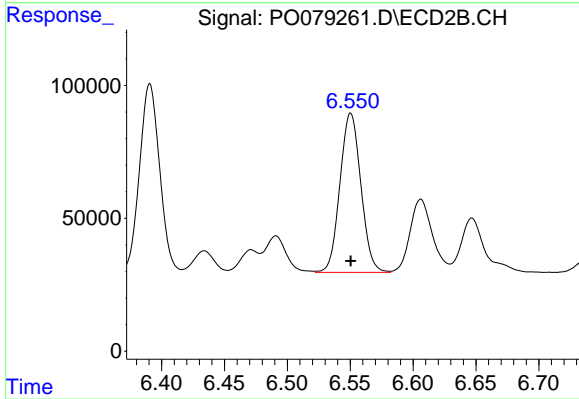
#26 AR-1254-1

R.T.: 6.391 min  
 Delta R.T.: 0.000 min  
 Response: 793338  
 Conc: 500.00 ng/ml



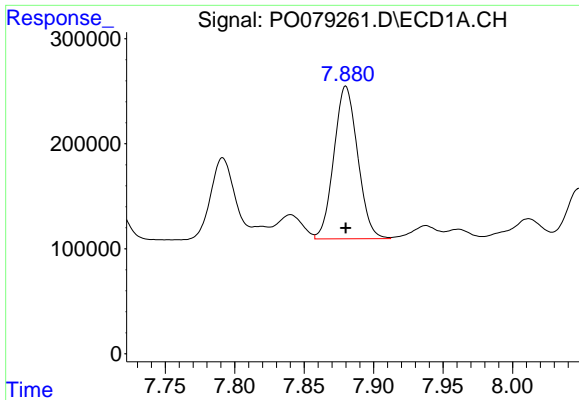
#27 AR-1254-2

R.T.: 7.498 min  
 Delta R.T.: 0.000 min  
 Response: 1633597  
 Conc: 500.00 ng/ml



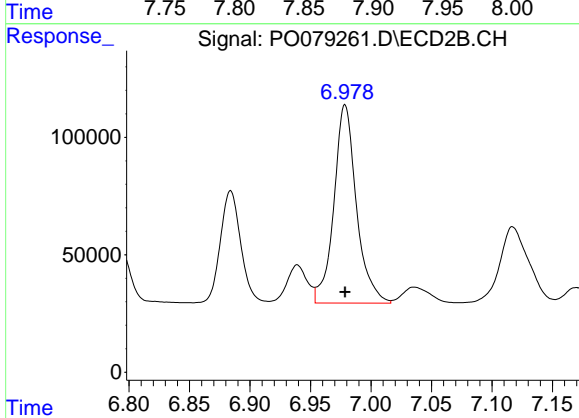
#27 AR-1254-2

R.T.: 6.550 min  
 Delta R.T.: 0.000 min  
 Response: 694286  
 Conc: 500.00 ng/ml

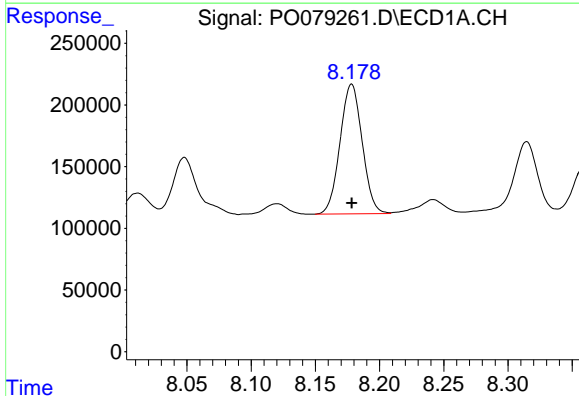


#28 AR-1254-3  
 R.T.: 7.880 min  
 Delta R.T.: 0.000 min  
 Response: 1731770  
 Conc: 500.00 ng/ml

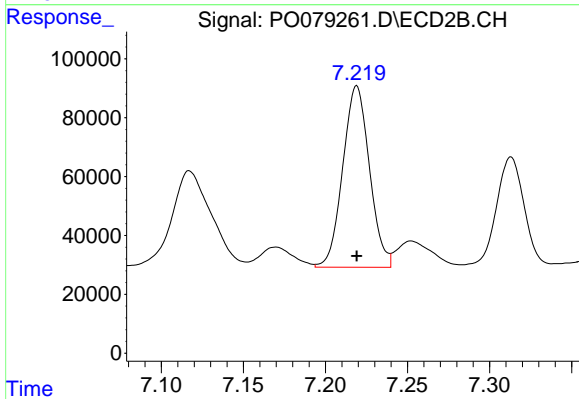
Instrument :  
 ECD\_O  
 ClientSampleId :  
 AR1254ICC500



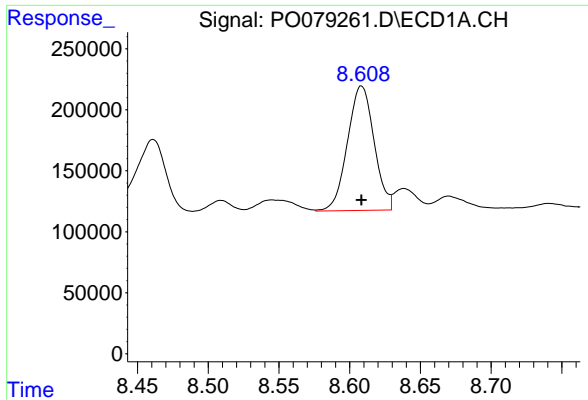
#28 AR-1254-3  
 R.T.: 6.979 min  
 Delta R.T.: 0.000 min  
 Response: 1097856  
 Conc: 500.00 ng/ml



#29 AR-1254-4  
 R.T.: 8.178 min  
 Delta R.T.: 0.000 min  
 Response: 1263485  
 Conc: 500.00 ng/ml



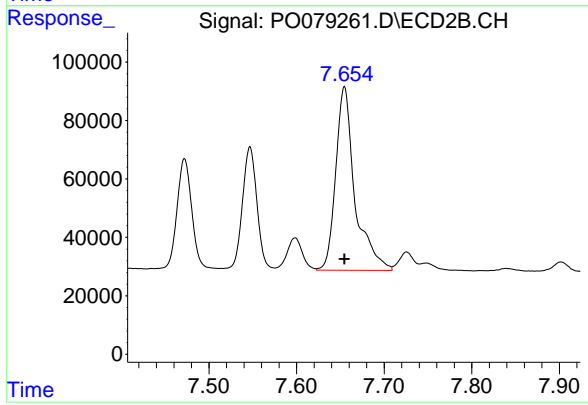
#29 AR-1254-4  
 R.T.: 7.219 min  
 Delta R.T.: 0.000 min  
 Response: 698703  
 Conc: 500.00 ng/ml



#30 AR-1254-5

R.T.: 8.608 min  
Delta R.T.: 0.000 min  
Response: 1335916  
Conc: 500.00 ng/ml

Instrument :  
ECD\_O  
ClientSampled :  
AR1254ICC500



#30 AR-1254-5

R.T.: 7.655 min  
Delta R.T.: 0.000 min  
Response: 956037  
Conc: 500.00 ng/ml